



Hawai'i State Department of Education



2022

DATA BOOK



**The Honorable Joshua Green, M.D.
Governor, State of Hawaii**

BOARD OF EDUCATION

Bruce Voss, Chairperson
Kaimana Barcarse, Vice Chairperson

William "Bill" Arakaki Makana McClellan
Shanty Asher Lauren Moriarty
Lynn Fallin Christine "Kili" Namaau
Ken Kuraya Colonel Angenene L. Robertson (Military Liaison)
Maverick Yasuda (Student Representative)

DEPARTMENT OF EDUCATION

Keith T. Hayashi, Superintendent of Education
Heidi Armstrong, Deputy Superintendent
Curt Otaguro, Deputy Superintendent
Tammi Oyadomari-Chun, Ed.D., Deputy Superintendent

Sean Bacon
Assistant Superintendent
Office of Talent Management

Christine Shaw
Interim Assistant Superintendent & Chief Information Officer
Office of Information Technology Services

Brian Hallett
Assistant Superintendent & Chief Financial Officer
Office of Fiscal Services

Randall Tanaka
Assistant Superintendent
Office of Facilities and Operations

Annie Kalama
Assistant Superintendent
Office of Student Support Services

Cara Tanimura
Interim Assistant Superintendent
Office of Strategy, Innovation and Performance

Teri Ushijima, Ed.D.
Assistant Superintendent
Office of Curriculum and Instructional Design

Rochelle Mahoe, Ph.D.
Farrington-Kaiser-Kalani Complex Area Superintendent
Linell Dilwith
Kaimuki-McKinley-Roosevelt Complex Area Superintendent
John Erickson
Aiea-Moanalua-Radford Complex Area Superintendent
Robert Davis
Leilehua-Mililani-Waialua Complex Area Superintendent
Sean Tajima
Campbell-Kapolei Complex Area Superintendent
Disa Hauge
Interim Nanakuli-Waianae Complex Area Superintendent
Richard Fajardo
Pearl City-Waipahu Complex Area Superintendent

Ed Noh, Ed.D.
Castle-Kahuku Complex Area Superintendent
Lanelle Hibbs
Kailua-Kalaheo Complex Area Superintendent
Stacey Bello
Kau-Keaau-Pahoa Complex Area Superintendent
Esther Kanehailua
Hilo-Waiakea Complex Area Superintendent
Janette Snelling
Honokaa-Kealakehe-Kohala-Konawaena Complex Area Superintendent
Desiree Sides
Baldwin-Kekaulike-Kulanihako-Maui Complex Area Superintendent
Rebecca Winkie, Ph.D.
Hana-Lahainaluna-Lanai-Molokai Complex Area Superintendent

Daniel Hamada
Kapaa-Kauai-Waimea Interim Complex Area Superintendent

Contents

Data Insights	1
Students & Schools	1
Progress & Outcomes	1
Resources & Support	1
At-A-Glance	2
Table 1. Official Fall Enrollment for Grades K to 12, Public and Private Schools.....	2
Figure 1. Percent of Public School Students With Special Needs, Unduplicated Count	2
Table 2. Department of Education Teacher Credentials	2
Table 3. Funding By Source and Year (In Millions)	3
Table 4. Safety and Well-Being.....	3
Table 5. Hawaii Statewide Assessment Program, Percent Meeting Standard	3
Table 6. Hawaii Statewide Assessment Program, Percent in Each Standard Level	4
Figure 2. Hawaii Statewide Assessment Program, Percent Meeting Standard in Language Arts.....	5
Figure 3. Hawaii Statewide Assessment Program, Percent Meeting Standard in Mathematics.....	5
Figure 4. Hawaii Statewide Assessment Program, Percent Meeting Standard in Science	5
Table 7. Four-Year Graduation and Dropout Rates.....	6
Table 8. High School Diplomas	6
Table 9. Honors Recognition Certificates	6
Table 10. Advanced Placement (AP) Program.....	6
Profiles and Trends	7
Table 11. Number of Public Schools (and Percentage of Total Schools by Type)	7
Table 12. Student Enrollment.....	7
Table 13. Progress and Completion	7
Table 14. Staff, Full-Time Equivalent Positions	8

Table 15.	State Demographics.....	8
School Finance		9
Table 16.	State School Budget.....	9
Table 17.	Key Finance Indicators.....	9
Figure 5.	Percentage of State & Local Expenditures per Capita Supporting Public Schools	10
Educational Assessments		10
Table 18.	National Assessment of Educational Progress (NAEP)	10
Figure 6.	National Assessment of Educational Progress (NAEP), Percent Proficient & Advanced in Grade 4 Reading and Mathematics	11
Figure 7.	National Assessment of Educational Progress (NAEP), Percent Proficient & Advanced in Grade 8 Reading and Mathematics	11
Table 19.	Hawaii Statewide Assessment Program, Percent Meeting Standard	12
Table 20.	Students by Complex in SY 2021-22.....	13
Table 21.	Teachers by Complex in SY 2021-22.....	14
Table 22.	SY 2021-22 Wellness Indicators by Complex.....	15
Table 23.	Percent Meeting Standard on the Hawaii Statewide Assessment Program English Language Arts Assessments by Grade and Complex for SY 2021-22.....	16
Table 24.	Percent Meeting Standard on the Hawaii Statewide Assessment Program Mathematics Assessments by Grade and Complex for SY 2021-22.....	17
Table 25.	Percent Meeting Standard on the Hawaii Statewide Assessment Program Science Assessments by Grade and Complex for SY 2021- 22.....	18
Appendices		19
Appendix A.	Glossary.....	19
Appendix B.	References and Resources.....	23
Appendix C.	Supplemental Data Tables	26

Students & Schools

The data highlighted below are for School Year (SY) 2021-22:

- Public school enrollment continues to decline, with a decrease of 3,104 students to 171,600 (Table 1, page 2).
- Charter school enrollment decreased by 116 students, while department school enrollment decreased by 2,988 students (Table 1, page 2).

The data highlighted below are for SY 2019-20 to SY 2021-22, unless noted:

- Special Education students increased by 19 or less than 1 percentage point (Table 12, page 7).
- English Learner students decreased by 378 or approximately two percentage points (Table 12, page 7).
- Economically Disadvantaged students increased by 162 or less than one percentage point (Table 12, page 7).
- 54% of public school students were identified as economically disadvantaged, special education, multiple special needs, Section 504, and/or English Learners. This is a decrease of two percentage points from SY 2020-21 (Figure 1, page 2).
- The percentage of dropouts increased from 10.8% to 11.6%, and the graduation rate decreased from 86.2% to 85.4% (Table 7, page 6; Table 13, page 7).

Progress & Outcomes

Hawaii State Assessment Program (HSAP)

- There were increases in overall proficiency in all three tested subjects. Language Arts achievement increased by two percentage points to 52%, mathematics increased by six percentage points to 38% and science increased by five percentage points to 40% between SY 2020-21 and SY 2021-22. (Table 5, page 3)

National Assessment of Educational Progress (NAEP)

The NAEP assessment is normally administered every two years (odd years). In response to the COVID-19 pandemic, the National Center for Education Statistics had postponed the test administration to 2022.

- Grade 4 Reading: 35% were proficient or advanced, placing Hawaii above the national average of 32%. In 2019, Hawaii was on par with the national average, and in 2017, Hawaii trailed the national average by four percentage points (Table 18, page 10).
- Grade 8 Reading: 31% were proficient or advanced, placing Hawaii above the national average of 29%. In 2019 and 2017, Hawaii was below the national average by three and six percentage points respectively (Table 18, page 10).
- Grade 4 Mathematics: 37% were proficient or advanced, placing Hawaii above the national average of 35%. In 2019, Hawaii was on par with the national average, and in 2017, Hawaii trailed the national average by two percentage points (Table 18, page 10).
- Grade 8 Mathematics: 22% were proficient or advanced, placing Hawaii four percentage points below the national average of 26%. In 2019 and 2017, Hawaii was below the national average by five and seven percentage points respectively (Table 18, page 10).

Other

- Student perception of safety decreased: Elementary decreased one percentage point to 70%, Middle decreased seven percentage points to 58%, and High School decreased seven percentage points to 59%. Teachers' perception of safety decreased two percentage points to 73% (Table 4, page 3).

Resources & Support

- Hawaii's per-pupil expenditure showed a percent change of 5.8 to \$16,132 for the 2018-19 school year (most current available information) (Table 17, page 9).
- Hawaii ranked 50th (last) in the nation when comparing the percent of state and local expenditures for public education per capita (Table 17, page 9).

At-A-Glance

Note: Unless otherwise noted, data are about “public schools” and represents both Department and Charter schools; percentages with one decimal place have been truncated at the first decimal place.

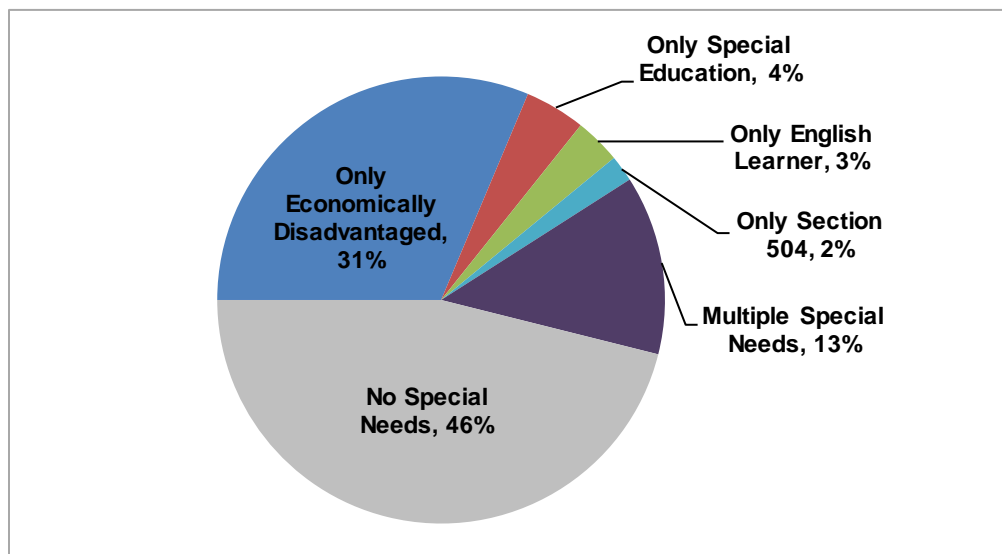
Table 1. Official Fall Enrollment for Grades K to 12, Public and Private Schools

	2019-20	2020-21	2021-22
Public Schools	179,331	174,704	171,600
% of total enrollment	85.4%	85.2%	84.6%
Department schools	167,454	162,491	159,503
% of public schools enrollment	93.3%	93.0%	92.9%
Charter schools	11,877	12,213	12,097
% of public schools enrollment	6.6%	6.9%	7.0%
Private Schools	30,492	30,306	31,018
% of total enrollment	14.5%	14.7%	15.3%
Total	209,823	205,010	202,618

Note: Due to rounding, percentages may not total to 100%.

Sources: Hawaii State Department of Education: Office of Strategy, Innovation and Performance; Assessment and Accountability Branch; Hawaii Association of Independent Schools.

Figure 1. Percent of Public School Students With Special Needs, Unduplicated Count



Note: Graph represents student count as of 12/17/2021.

Source: Hawaii State Department of Education: Office of Strategy, Innovation and Performance; Assessment and Accountability Branch.

Table 2. Department of Education Teacher Credentials

	2019-20	2020-21	2021-22
Fully Licensed	96%	96%	96%
Advanced Degree	38%	38%	39%
5+ Years at the Same School	58%	59%	60%

Note: These figures do not include teachers at Charter schools.

Source: Hawaii State Department of Education: Office of Talent Management.

Table 3. Funding By Source and Year (In Millions)

	2019-20	2020-21	2021-22
Appropriated Funds	\$3,458	\$4,086	\$4,241
State			
General	\$3,078	\$2,914	\$2,956
Special	\$87	\$87	\$87
Trust	\$16	\$16	\$16
Federal	\$277	\$1,069	\$1,182

Note: Appropriated Funds include Executive Budget Bill appropriations and Federal fund ceiling increases for the DOE and Public Charter Schools plus expenditures made by Department of Budget & Finance (B&F) for both DOE and Public Charter schools related debt service and the employer's share of the cost of employees' retirement system and health insurance costs.

Source: Hawaii State Department of Education: Office of Fiscal Services.

Table 4. Safety and Well-Being

	2019-20	2020-21	2021-22
Students Not Suspended	97%	100%	96%
Safety % Positive Responses			
Students			
Elementary	68%	71%	70%
Middle	59%	65%	58%
High	59%	66%	59%
Teachers	72%	75%	73%
Well-Being % Positive Responses			
Teachers	73%	74%	74%

Note: Students Not Suspended does not include Charter schools.

Source: Hawaii State Department of Education: Office of Strategy, Innovation and Performance; Assessment and Accountability Branch.

Table 5. Hawaii Statewide Assessment Program, Percent Meeting Standard

	2019-20	2020-21	2021-22
Language Arts	--	50%	52%
Mathematics	--	32%	38%
Science	--	35%	40%

Note: Due to the COVID-19 pandemic and subsequent ED waiver from testing, there are no results for SY 2019-20. Results are based on **students enrolled for the school year**.

Language Arts and Mathematics assessments include the Smarter Balanced Assessment (SBA), HSA-Alternate (HSA-Alt) and Kaiapuni Assessment of Educational Outcomes (KAEO).

The Science assessment includes the HSA Science, Biology I End-of-Course Exam, HSA-Alt and KAEO. Beginning SY 2020-21, the Next Generation Science Standards (NGSS) replaced the Hawaii Content and Performance Standards III (HCPS III). This resulted in the elementary tested grade moving from 4 to 5. No changes were made to other tested grades (8 and high school [HS]).

Source: Hawaii State Department of Education: Office of Strategy, Innovation and Performance; Assessment and Accountability Branch.

Table 6. Hawaii Statewide Assessment Program, Percent in Each Standard Level

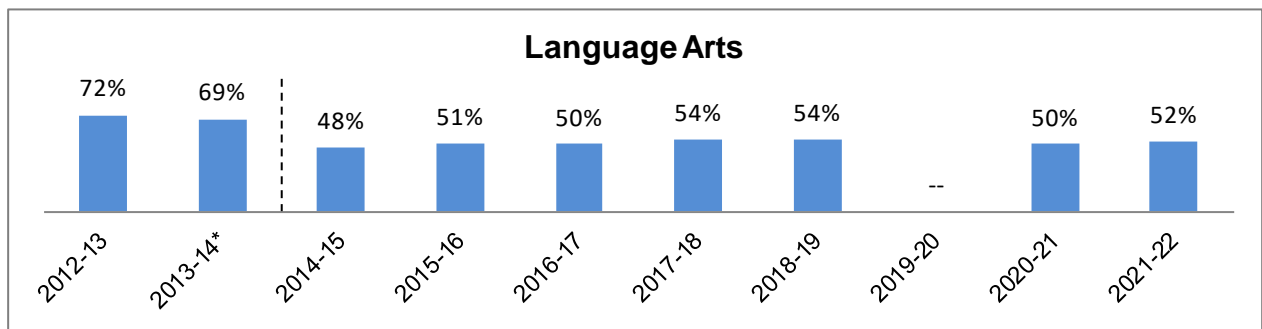
Language Arts								
Grade	2020-21				2021-22			
	Not Met	Nearly Met	Met	Exceeded	Not Met	Nearly Met	Met	Exceeded
3	34%	24%	20%	22%	29%	22%	22%	27%
4	34%	20%	23%	23%	30%	18%	23%	28%
5	29%	20%	28%	23%	27%	18%	28%	27%
6	27%	27%	30%	16%	27%	24%	30%	20%
7	24%	24%	36%	16%	26%	23%	34%	18%
8	23%	26%	35%	16%	25%	25%	33%	17%
11	13%	22%	37%	27%	17%	23%	33%	27%
Mathematics								
Grade	2020-21				2021-22			
	Not Met	Nearly Met	Met	Exceeded	Not Met	Nearly Met	Met	Exceeded
3	36%	24%	24%	16%	27%	22%	26%	25%
4	32%	32%	22%	14%	26%	29%	25%	20%
5	41%	27%	16%	16%	32%	26%	18%	24%
6	42%	29%	16%	13%	37%	28%	17%	18%
7	41%	30%	18%	11%	39%	28%	18%	15%
8	48%	27%	14%	11%	43%	26%	16%	15%
11	42%	30%	19%	9%	46%	28%	17%	8%
Science								
Grade	2020-21				2021-22			
	Not Met	Nearly Met	Met	Exceeded	Not Met	Nearly Met	Met	Exceeded
5	26%	38%	26%	10%	22%	34%	29%	15%
8	35%	32%	26%	8%	34%	27%	29%	10%
High School	31%	35%	24%	10%	33%	32%	25%	10%

Note: Language Arts and Mathematics assessments include the SBA, HSA-Alt and KAEO.

The Science assessment includes the HSA Science, Biology I End-of-Course Exam, HSA-Alt and KAEO. Beginning SY 2020-21, the NGSS replaced the HCPS III. This resulted in the elementary tested grade moving from 4 to 5. No changes were made to other tested grades (8 and HS). The achievement rates for high school students are based on students who were administered either the Biology I End-of-Course Exam or the HSA-Alt for grade 11.

Source: Hawaii State Department of Education: Office of Strategy, Innovation and Performance; Assessment and Accountability Branch.

Figure 2. Hawaii Statewide Assessment Program, Percent Meeting Standard in Language Arts



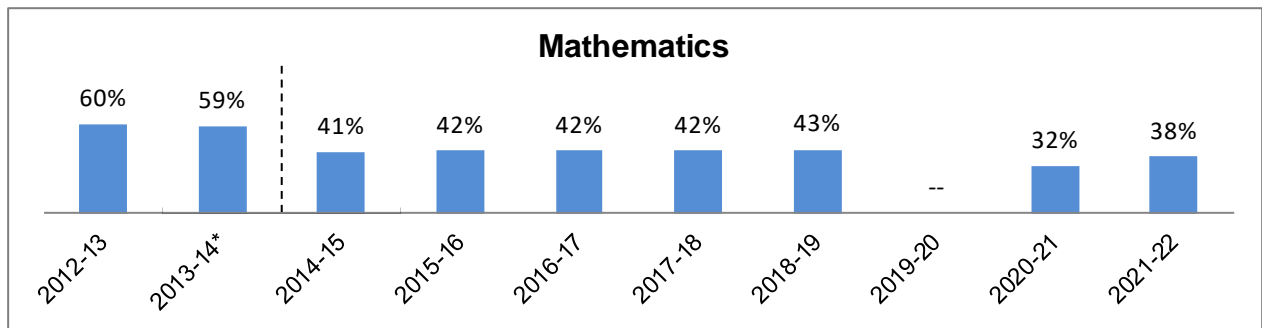
Note: Due to the COVID-19 pandemic and subsequent ED waiver from testing, there are no results for SY 2019-20. Results are based on **students enrolled for the school year**.

The Language Arts assessment includes the SBA, HSA-Alt and KAE0. Beginning 2014-15, the SBA was administered replacing the HSA summative assessment. This resulted in the HS tested grade moving from 10 to 11. No changes were made to other tested grades (grades 3 - 8).

*Result based on the SBA bridge test.

Source: Hawaii State Department of Education: Office of Strategy, Innovation and Performance; Assessment and Accountability Branch.

Figure 3. Hawaii Statewide Assessment Program, Percent Meeting Standard in Mathematics



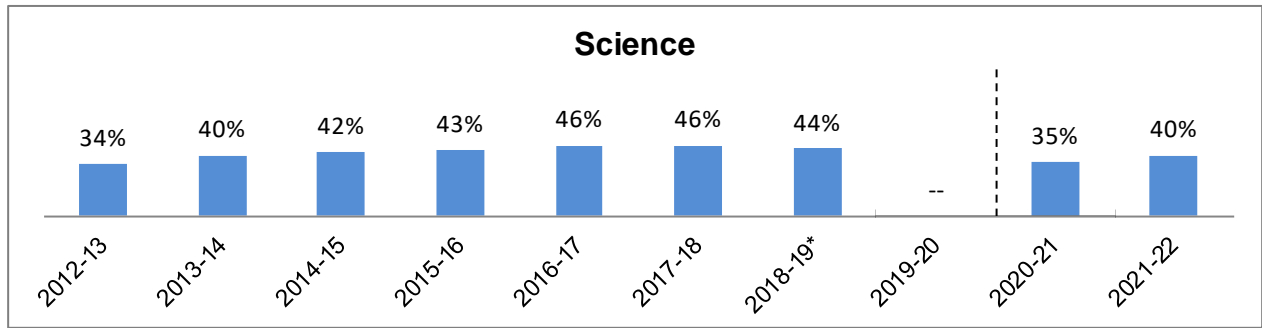
Note: Due to the COVID-19 pandemic and subsequent ED waiver from testing, there are no results for SY 2019-20. Results are based on **students enrolled for the school year**.

The Mathematics assessment includes the SBA, HSA-Alt and KAE0. Beginning 2014-15, the SBA was administered replacing the HSA summative assessment. This resulted in the HS tested grade moving from 10 to 11. No changes were made to other tested grades (grades 3 - 8).

*Result based on the SBA bridge test.

Source: Hawaii State Department of Education: Office of Strategy, Innovation and Performance; Assessment and Accountability Branch.

Figure 4. Hawaii Statewide Assessment Program, Percent Meeting Standard in Science



Note: Due to the COVID-19 pandemic and subsequent ED waiver from testing, there are no results for SY 2019-20. Results are based on **students enrolled for the school year**.

The Science assessment includes the HSA Science, Biology I End-of-Course Exam, HSA-Alt and KAE0. Beginning SY 2020-21, the NGSS replaced the HCPS III. This resulted in the elementary tested grade moving from 4 to 5. No changes were made to other tested grades (8 and HS).

*Result based on the NGSS bridge test.

Source: Hawaii State Department of Education: Office of Strategy, Innovation and Performance; Assessment and Accountability Branch.

Table 7. Four-Year Graduation and Dropout Rates

	2019-20	2020-21	2021-22
Graduation	86.2%	85.9%	85.4%
Dropouts	10.8%	10.9%	11.6%
Others*	2.8%	3.0%	2.8%

Note: Due to rounding, percentages may not total to 100%.

*Others include high school completers who received a special education certificate of completion in lieu of a diploma and students who are still attending school and did not graduate within the four-year time frame.

Source: Hawaii State Department of Education: Office of Strategy, Innovation and Performance; Assessment and Accountability Branch.

Table 8. High School Diplomas

	2019-20*	2020-21	2021-22
Regular Diploma	94.8%	93.7%	94.4%

Note: *Due to the COVID-19 pandemic and closing of schools after the 3rd quarter, graduation requirements were modified in SY 2019-20.

Source: Hawaii State Department of Education: Office of Strategy, Innovation and Performance; Assessment and Accountability Branch.

Table 9. Honors Recognition Certificates

	2019-20	2020-21	2021-22
Academic Honors Recognition Certificate	24.0%	25.6%	24.4%
CTE Honors Recognition Certificate	15.0%	17.3%	19.2%
STEM Honors Recognition Certificate	3.3%	4.3%	4.1%

Note: Each percent is the percentage based on the number of students in the respective class.

Source: Hawaii State Department of Education: Office of Strategy, Innovation and Performance; Assessment and Accountability Branch.

Table 10. Advanced Placement (AP) Program

	2019-20	2020-21	2021-22
Number of students enrolled in at least one AP course	6,960	6,104	5,789
Number of students who took at least one AP exam	5,921	5,979	5,594
Number of exams taken	9,115	9,231	8,461
Number of AP exam results with a score of 3 or higher	4,691	3,949	4,579
Percent of exams passed	51%	43%	54%

Note: Results may not be comparable due to COVID-19 and the AP testing options available.

Source: Hawaii State Department of Education: Office of Curriculum and Instructional Design.

Profiles and Trends

Table 11. Number of Public Schools (and Percentage of Total Schools by Type)

Type of School	2019-20		2020-21		2021-22	
Total	293	100%	294	100%	294	100%
Department Schools						
Elementary	168	57%	168	57%	168	57%
Middle/Intermediate	38	13%	39	13%	39	13%
High	33	11%	33	11%	33	11%
Multi-Level	16	5%	16	5%	16	5%
Special (HSDB*)	1	<1%	1	<1%	1	<1%
Charter Schools	37	13%	37	13%	37	13%
Complex Areas	15	n/a	15	n/a	15	n/a

Note: *Hawaii School for the Deaf & Blind.

Source: Hawaii State Department of Education: Office of Strategy, Innovation and Performance; Assessment and Accountability Branch.

Table 12. Student Enrollment

Enrollment	2019-20		2020-21		2021-22	
Official Enrollment Count	179,331	100%	174,704	100%	171,600	100%
K-6	99,436	55%	94,292	54%	94,493	55%
7-8	27,853	16%	27,883	16%	24,348	14%
9-12	52,042	29%	52,529	30%	52,759	31%
Special Education (SPED)	17,960	10%	18,031	10%	17,979	10%
English Learner (EL)	16,986	9%	16,267	9%	16,608	10%
Economically Disadvantaged*	84,993	47%	87,879	50%	85,155	50%

Note: Due to rounding, enrollment percentages may not total to 100%.

*Students whose family income qualifies them for assistance through the National School Lunch Program are included in the "economically disadvantaged" count. Also included are estimated counts of students based on the Community Eligibility Provision (CEP) requirements established by the U.S. Department of Agriculture.

Source: Hawaii State Department of Education: Office of Strategy, Innovation and Performance; Assessment and Accountability Branch.

Table 13. Progress and Completion

	2019-20	2020-21	2021-22
Daily Average Attendance Rates			
Elementary	94.4%	93.6%	88.9%
Middle/Intermediate	94.6%	93.5%	90.0%
High	92.3%	91.5%	89.3%
Multi-Level	91.4%	89.7%	84.9%
Charter	94.0%	94.8%	91.3%
Retention Rates			
Elementary	<0.5%	<0.5%	<0.5%
Middle/Intermediate	<0.5%	0.8%	0.5%
Four-Year Graduation and Dropout Rates			
Graduation	86.2%	85.9%	85.4%
Dropouts	10.8%	10.9%	11.6%
Others*	2.8%	3.0%	2.8%

Note: Due to rounding, Four-Year Graduation and Dropout percentages may not total to 100%.

*Others include high school completers who received a special education certificate of completion in lieu of a diploma and students who are still attending school and did not graduate within the four-year time frame.

Source: Hawaii State Department of Education: Office of Strategy, Innovation and Performance; Assessment and Accountability Branch.

Table 14. Staff, Full-Time Equivalent Positions

Positions	2019-20	2020-21	2021-22
Teachers			
Classroom Teachers	11,898.7	11,837.9	11,730.7
Librarians	125.5	114.0	87.5
Counselors	660.4	659.0	646.3
Administrators			
School	740.0	735.0	705.5
State & Complex Area	353.0	360.0	358.0
Other Support Staff	9,236.5	9,245.7	9,107.7
Total	23,014.1	22,951.6	22,635.7

Source: Hawaii State Department of Education: Office of Strategy, Innovation and Performance; Assessment and Accountability Branch.

Table 15. State Demographics

Census Data	2019 Est.	2020 Est.	2021 Est.
Populations	1,422,094	1,420,074	1,453,498
Youth Age Under 5 Years	88,842	88,179	87,767
Youth Age 5-9	84,852	84,349	86,980
Youth Age 10-14	83,615	83,438	88,005
Youth Age 15-19	77,712	76,036	79,517
Median Age, in Years	39.1	39.4	39.6
Households			
Total	459,424	467,932	478,413
Families	319,348	324,482	330,912
Avg. Family Size	3.58	3.50	3.51
Income*			
Median Family Income	\$94,982	\$97,813	\$103,593
Per Capita Income	\$35,567	\$37,013	\$39,045
Poverty, Families In	6.4%	6.3%	6.5%
Educational Attainment			
Percent High School or Higher	92.0%	92.5%	92.7%
Percent 4-yr Degree or Higher	33.0%	33.6%	34.3%

Note: Percentage figures are rounded at the first decimal place.

*Income figures are reported in inflation adjusted dollars, using 5-year estimates.

Source: U.S. Census Bureau; American Community Survey.

School Finance

Table 16. State School Budget

	2019-20	2020-21	2021-22
APPROPRIATED FUNDS (millions)			
State			
General	\$3,078	\$2,914	\$2,956
Special	\$87	\$87	\$87
Trust	\$16	\$16	\$16
Federal	\$277	\$1,069	\$1,182
TOTAL	\$3,458	\$4,086	\$4,241
EXPENDITURES AND ENCUMBERANCES (millions)			
State			
General	\$2,956	\$2,819	\$2,893
Special	\$40	\$20	\$22
Trust	\$5	\$4	\$4
Federal	\$282	\$375	\$491
TOTAL	\$3,283	\$3,218	\$3,410

Note: Appropriated Funds include Executive Budget Bill appropriations and Federal fund ceiling increases for the DOE and Public Charter Schools plus expenditures made by B&F for both DOE and Public Charter schools related debt service and the employer's share of the cost of employees' retirement system and health insurance costs.

Expenditures and encumbrances for the DOE and Public Charter Schools.

Source: Hawaii State Department of Education: Office of Fiscal Services.

Table 17. Key Finance Indicators

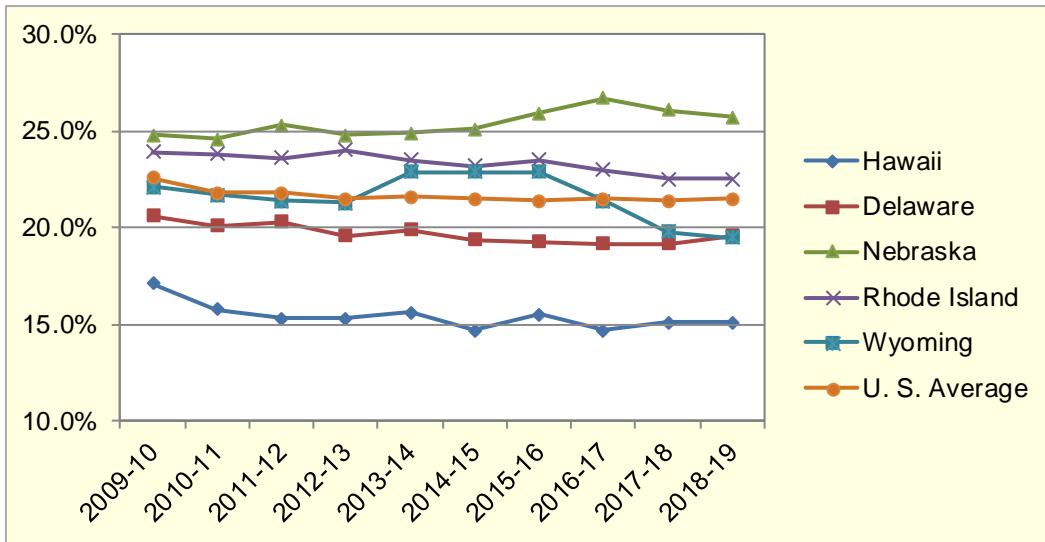
	2016-17	2017-18	2018-19
Per-pupil expenditure	\$14,322	\$15,242	\$16,132
Percent state & local expenditures for public education (per capita)	14.7%	15.1%	15.1%
Rank*	50th	50th	50th

Note: Data reported was the most current available at the time of publication.

**Rank is determined by comparing the "Percent state and local expenditures for public education (per capita)" of Hawaii to that of the other 49 states.*

Sources: U.S. Census Bureau; National Center for Education Statistics.

Figure 5. Percentage of State & Local Expenditures per Capita Supporting Public Schools



Note: Comparisons are made with states most similar to Hawaii on measures directly related to school finance. Measures include K-12 enrollment, population, per capita income, per capita state and local revenue, and per capita state and local expenditures. Data reported was the most current data available at the time of publication.

Source: Digest of Education Statistics, National Center for Education Statistics, ED.

Educational Assessments

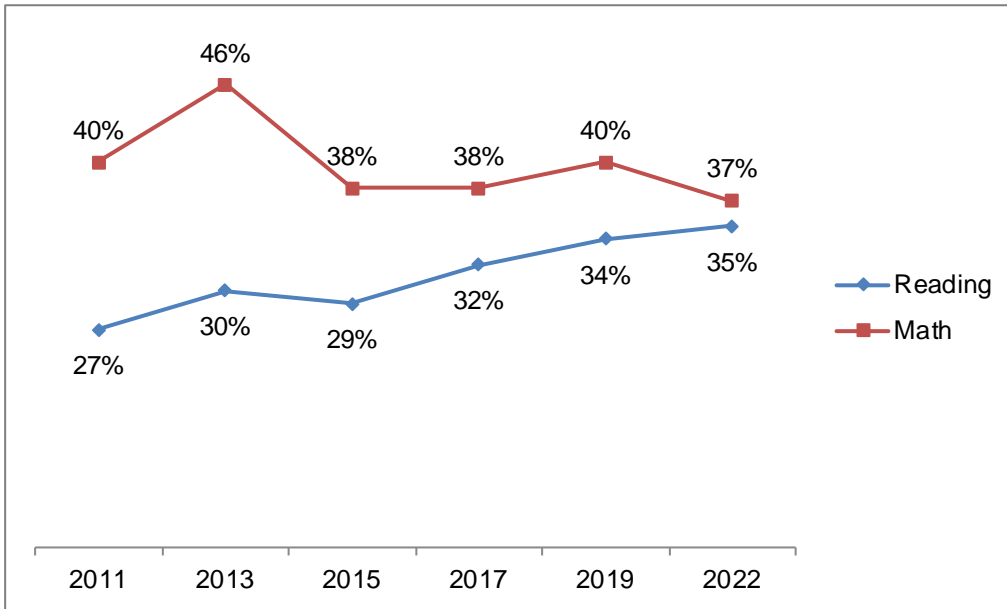
Table 18. National Assessment of Educational Progress (NAEP)

NAEP Assessment	2017		2019		2022	
	Hawaii	Nation	Hawaii	Nation	Hawaii	Nation
(Percent Proficient & Advanced)						
Reading						
Grade 4	32%	36%	34%	34%	35%	32%
Grade 8	30%	36%	29%	32%	31%	29%
Mathematics						
Grade 4	38%	40%	40%	40%	37%	35%
Grade 8	27%	34%	28%	33%	22%	26%
Science						
Grade 4	--	--	--	--	--	--
Grade 8	--	--	--	--	--	--

Note: Data reported was the most current data available at the time of publication. There was no testing in 2021.

Source: Hawaii State Department of Education: Office of Strategy, Innovation and Performance; Assessment and Accountability Branch.

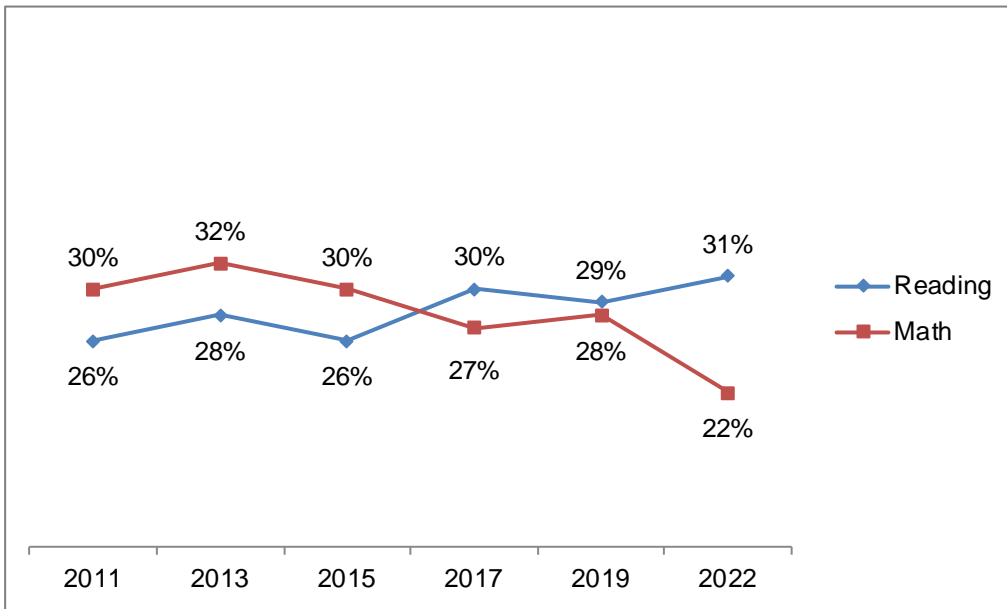
Figure 6. National Assessment of Educational Progress (NAEP), Percent Proficient & Advanced in Grade 4 Reading and Mathematics



Note: Data reported was the most current data available at the time of publication. There was no testing in 2021.

Source: Hawaii State Department of Education: Office of Strategy, Innovation and Performance; Assessment and Accountability Branch.

Figure 7. National Assessment of Educational Progress (NAEP), Percent Proficient & Advanced in Grade 8 Reading and Mathematics



Note: Data reported was the most current data available at the time of publication. There was no testing in 2021.

Source: Hawaii State Department of Education: Office of Strategy, Innovation and Performance; Assessment and Accountability Branch.

Table 19. Hawaii Statewide Assessment Program, Percent Meeting Standard

2017-18				2018-19		
Grade	All Schools	Department Schools Only	Charter Schools Only	All Schools	Department Schools Only	Charter Schools Only
English Language Arts						
3	52.6%	53.0%	46.3%	52.3%	52.6%	48.5%
4	50.8%	51.3%	41.9%	51.5%	52.0%	44.0%
5	56.0%	56.2%	53.8%	56.7%	57.2%	49.5%
6	52.6%	52.6%	52.6%	52.4%	52.3%	54.0%
7	52.1%	52.0%	53.7%	52.8%	52.6%	56.1%
8	54.5%	54.3%	57.2%	51.5%	51.4%	53.2%
11	60.0%	60.1%	57.5%	58.7%	58.7%	60.1%
Mathematics						
3	54.2%	55.2%	39.0%	55.7%	56.4%	45.3%
4	47.3%	48.0%	35.4%	48.1%	49.0%	35.0%
5	42.9%	43.3%	36.4%	44.1%	44.8%	32.5%
6	41.4%	41.9%	34.7%	40.6%	41.1%	34.5%
7	37.1%	37.2%	36.5%	38.2%	38.5%	34.3%
8	38.6%	39.2%	29.8%	37.8%	38.4%	30.1%
11	32.0%	32.3%	23.9%	30.1%	30.2%	27.1%
Science						
4	56.3%	56.9%	47.0%	56.7%	57.1%	50.7%
8	43.6%	43.8%	40.4%	40.7%	40.5%	44.5%
HS	34.6%	34.5%	38.3%	34.7%	34.6%	36.2%
2020-21				2021-22		
Grade	All Schools	Department Schools Only	Charter Schools Only	All Schools	Department Schools Only	Charter Schools Only
English Language Arts						
3	42.9%	42.9%	43.3%	49.1%	49.3%	45.0%
4	46.2%	46.5%	41.8%	51.3%	51.8%	43.1%
5	50.6%	50.7%	48.6%	54.9%	55.3%	47.9%
6	46.5%	46.5%	46.2%	49.8%	50.1%	46.1%
7	51.8%	51.7%	52.7%	51.6%	52.0%	48.4%
8	51.0%	50.8%	53.9%	50.0%	50.4%	45.8%
11	64.4%	64.5%	62.2%	59.6%	59.4%	63.4%
Mathematics						
3	40.5%	40.7%	36.6%	50.9%	51.6%	39.9%
4	36.1%	36.3%	33.2%	45.9%	46.2%	39.8%
5	31.8%	32.1%	27.1%	41.6%	42.1%	33.8%
6	28.9%	29.3%	25.2%	35.0%	35.6%	28.3%
7	29.3%	29.4%	27.6%	33.2%	33.9%	25.9%
8	24.7%	24.8%	24.2%	30.7%	31.3%	23.5%
11	27.9%	28.1%	24.5%	25.8%	25.9%	23.0%
Science						
5	36.6%	36.6%	37.4%	44.4%	44.6%	40.5%
8	33.0%	32.6%	38.6%	38.7%	39.2%	33.3%
HS	34.0%	33.9%	36.8%	35.2%	35.3%	32.0%

Note: Due to the COVID-19 pandemic and subsequent ED waiver from testing, there are no results for SY 2019-20.

Achievement rates for English Language Arts and Mathematics are based on **all students tested** who were administered either the SBA or HSA-Alt in that subject.

Achievement rates for Science are based on **all students tested** who were administered either the HSA Science, HSA-Alt, or Biology I End-of-Course Exam. Beginning SY 2020-21, the NGSS replaced the HCPS III. This resulted in the elementary tested grade moving from 4 to 5. No changes were made to other tested grades (8 and HS). The achievement rates for high school students are based on students who were administered either the Biology I End-of-Course Exam or the HSA-Alt for grade 11.

SY 2018-19 Science results based on the NGSS bridge test.

Source: Hawaii State Department of Education: Office of Strategy, Innovation and Performance; Data Governance and Analysis Branch.

Table 20. Students by Complex in SY 2021-22

	Enrollment*	Economically Disadvantaged	Special Education	EL	Graduated On-Time
ALL SCHOOLS	171,600	85,155	17,979	16,608	85%
<i>Department Schools</i>	159,503	79,121	16,874	16,257	85%
HONOLULU: 2 Complex Areas / 6 Complexes					
Farrington	6,835	70%	8%	30%	72%
Kaiser	3,586	14%	8%	5%	96%
Kalani	4,244	19%	8%	11%	93%
Kaimuki	3,418	67%	12%	29%	81%
McKinley	3,999	70%	10%	30%	74%
Roosevelt	5,768	39%	8%	9%	91%
CENTRAL: 2 Complex Areas / 6 Complexes					
Aiea	3,459	48%	11%	12%	91%
Moanalua	4,898	26%	8%	6%	94%
Radford	5,092	27%	11%	5%	94%
Leilehua	6,435	52%	12%	8%	87%
Mililani	7,350	20%	10%	2%	94%
Waialua	1,310	46%	11%	4%	91%
LEEWARD: 3 Complex Areas / 6 Complexes					
Campbell	10,545	36%	8%	7%	86%
Kapolei	6,480	39%	11%	4%	89%
Pearl City	5,851	34%	10%	7%	91%
Waipahu	7,982	58%	8%	21%	84%
Nanakuli	2,032	89%	18%	6%	82%
Waianae	4,963	87%	17%	6%	79%
WINDWARD: 2 Complex Areas / 4 Complexes					
Castle	4,234	48%	15%	3%	78%
Kahuku	3,163	50%	12%	3%	88%
Kailua	2,339	53%	16%	3%	75%
Kalaheo	3,604	19%	11%	3%	88%
HAWAII: 3 Complex Areas / 9 Complexes					
Hilo	4,157	71%	14%	7%	83%
Waiakea	3,553	52%	11%	6%	87%
Kau	940	n/a	10%	25%	74%
Keaau	3,098	90%	13%	8%	89%
Pahoa	1,641	n/a	17%	8%	75%
Honokaa	1,687	70%	12%	7%	88%
Kealakehe	4,025	64%	10%	19%	77%
Kohala	768	66%	13%	7%	90%
Konawaena	3,244	67%	8%	14%	74%
MAUI: 2 Complex Areas / 7 Complexes					
Baldwin	4,008	50%	9%	8%	79%
Kekaulike	4,052	52%	13%	4%	77%
Maui	6,899	47%	10%	16%	83%
Hana	382	77%	14%	0%	90%
Lahainaluna	3,002	52%	9%	15%	83%
Lanai	574	45%	14%	14%	78%
Molokai	916	82%	14%	2%	91%
KAUAI: 1 Complex Area / 3 Complexes					
Kapaa	2,952	50%	11%	6%	97%
Kauai	3,574	50%	9%	9%	90%
Waimea	2,398	55%	10%	8%	91%
SPECIAL					
Hawaii School for Deaf & Blind	46	83%	n/a	39%	n/a
Charter Schools	12,097	6,034	1,105	351	90%

Note: *Based on the Official Enrollment Count for Fall 2021.

Source: Hawaii State Department of Education: Office of Strategy, Innovation and Performance; Assessment and Accountability Branch.

Table 21. Teachers by Complex in SY 2021-22

		Classroom Teachers (Headcount)	Fully Licensed	5+ Years at Same School	Advanced Degree	Average Years Teaching Experience
ALL SCHOOLS		11,378	10,939	6,754	4,439	12.6
<i>Department Schools</i>		11,035	10,599 96%	6,609 60%	4,276 39%	12.7
HONOLULU	Farrington	491	96%	65%	38%	14.1
	Kaiser	227	97%	59%	41%	12.5
	Kalani	272	99%	64%	47%	14.2
	Kaimuki	271	97%	68%	39%	15.6
	McKinley	286	95%	60%	41%	13.3
	Roosevelt	373	94%	60%	35%	14.1
CENTRAL	Aiea	233	94%	59%	36%	12.8
	Moanalua	311	98%	62%	48%	12.6
	Radford	350	96%	64%	37%	13.3
	Leilehua	490	94%	61%	42%	13.4
	Mililani	481	98%	65%	42%	14.5
	Waialua	90	100%	59%	47%	13.5
LEEWARD	Campbell	670	94%	58%	35%	11.7
	Kapolei	425	98%	52%	36%	11.8
	Pearl City	405	97%	68%	33%	14.7
	Waipahu	532	98%	67%	37%	13.5
	Nanakuli	158	97%	59%	42%	11.8
	Waianae	374	91%	54%	32%	10.3
WINDWARD	Castle	334	97%	61%	36%	13.6
	Kahuku	229	97%	63%	35%	13.4
	Kailua	213	94%	64%	39%	14.1
	Kalaheo	244	97%	51%	42%	11.3
HAWAII	Hilo	293	98%	62%	37%	13.2
	Waiakea	236	99%	67%	42%	14.5
	Kau	73	97%	47%	44%	7.8
	Keaau	208	99%	64%	39%	13.5
	Pahoa	114	94%	54%	47%	9.9
	Honokaa	113	100%	56%	43%	11.7
	Kealakehe	271	95%	48%	41%	10.0
	Kohala	60	93%	42%	40%	8.9
Konawaena	213	92%	49%	36%	9.8	
MAUI	Baldwin	261	97%	60%	36%	13.1
	Kekaulike	287	97%	55%	40%	12.1
	Maui	469	95%	55%	36%	11.3
	Hana	31	77%	55%	42%	11.9
	Lahainaluna	211	95%	59%	41%	9.9
	Lanai	50	98%	56%	36%	10.3
	Molokai	77	99%	60%	45%	14.0
KAUAI	Kapaa	185	98%	59%	40%	13.2
	Kauai	246	98%	66%	40%	12.8
	Waimea	162	95%	55%	37%	11.9
SPECIAL						
Hawaii School for Deaf & Blind		16	81%	31%	88%	9.8
<i>Charter Schools</i>		343	340 99%	145 42%	163 48%	9.2

Source: Hawaii State Department of Education: Office of Strategy, Innovation and Performance; Assessment and Accountability Branch.

Table 22. SY 2021-22 Wellness Indicators by Complex

	Number of Participating Schools	Percent of Participation	Schools with a Wellness Committee	All Food & Beverages Sold Met Compliance	Required Health Ed Classes Met Recommended Minutes	Required PE Classes Met Recommended Minutes	≥20 Minutes Recess Per Day	Average % of Wellness Guidelines Met
STATE OVERALL	235	91%	69%	63%	77%	87%	95%	82%
Farrington-Kaiser-Kalani	24	96%	75%	71%	79%	96%	96%	85%
Farrington	12	100%	67%	67%	75%	92%	100%	81%
Kaiser	6	100%	100%	50%	83%	100%	100%	91%
Kalani	6	86%	67%	100%	83%	100%	83%	88%
Kaimuki-McKinley-Roosevelt	27	96%	63%	67%	85%	89%	96%	83%
Kaimuki	9	90%	67%	67%	78%	89%	89%	82%
McKinley	8	100%	88%	75%	88%	100%	100%	86%
Roosevelt	10	100%	40%	60%	90%	80%	100%	83%
Aiea-Moanalua-Radford	19	86%	68%	74%	58%	89%	100%	79%
Aiea	6	86%	67%	50%	83%	100%	100%	78%
Moanalua	4	67%	50%	75%	75%	75%	100%	75%
Radford	9	100%	78%	89%	33%	89%	100%	80%
Leilehua-Mililani-Waiialua	19	95%	84%	79%	79%	95%	95%	87%
Leilehua	10	100%	100%	70%	100%	100%	90%	89%
Mililani	6	86%	67%	100%	50%	83%	100%	90%
Waiialua	3	100%	67%	67%	67%	100%	100%	74%
Campbell-Kapolei	16	89%	75%	50%	88%	88%	88%	78%
Campbell	9	90%	67%	33%	78%	89%	89%	76%
Kapolei	7	88%	86%	71%	100%	86%	86%	82%
Pearl City-Waipahu	4	24%	100%	50%	75%	100%	100%	87%
Pearl City	4	40%	100%	50%	75%	100%	100%	87%
Waipahu	0	--	--	--	--	--	--	--
Nanakuli-Waianae	9	100%	78%	56%	78%	89%	100%	82%
Nanakuli	3	100%	100%	67%	100%	100%	100%	93%
Waianae	6	100%	67%	50%	67%	83%	100%	77%
Castle-Kahuku	16	100%	56%	44%	75%	75%	100%	80%
Castle	10	100%	60%	50%	90%	90%	100%	84%
Kahuku	6	100%	50%	33%	50%	50%	100%	74%
Kailua-Kalaheo	14	100%	71%	57%	93%	93%	100%	85%
Kailua	8	100%	88%	50%	88%	100%	100%	82%
Kalaheo	6	100%	50%	67%	100%	83%	100%	88%
Hilo-Waiakea	13	100%	62%	62%	77%	92%	92%	82%
Hilo	9	100%	67%	56%	78%	100%	100%	83%
Waiakea	4	100%	50%	75%	75%	75%	75%	82%
Kau-Keaau-Pahoa	9	100%	67%	44%	78%	78%	100%	79%
Kau	2	100%	100%	50%	100%	100%	100%	87%
Keaau	4	100%	50%	50%	75%	75%	100%	74%
Pahoa	3	100%	67%	33%	67%	67%	100%	82%
Honokaa-Kealakehe-Kohala-Konawaena	18	95%	61%	39%	56%	72%	83%	74%
Honokaa	4	100%	50%	50%	50%	75%	75%	74%
Kealakehe	5	100%	60%	0%	80%	80%	100%	75%
Kohala	2	67%	50%	0%	50%	100%	50%	74%
Konawaena	7	100%	71%	71%	43%	57%	86%	74%
Baldwin-Kekaulike-Maui	20	100%	75%	75%	80%	90%	100%	84%
Baldwin	5	100%	60%	80%	100%	100%	100%	85%
Kekaulike	7	100%	71%	71%	71%	100%	100%	82%
Maui	8	100%	88%	75%	75%	75%	100%	86%
Hana-Lahainaluna-Lanai-Molokai	11	100%	45%	64%	73%	73%	91%	75%
Hana	1	100%	0%	0%	0%	0%	100%	62%
Lahainaluna	4	100%	50%	75%	100%	100%	75%	75%
Lanai	1	100%	0%	100%	0%	0%	100%	68%
Molokai	5	100%	60%	60%	80%	80%	100%	78%
Kapaa-Kauai-Waimea	16	100%	63%	88%	75%	81%	94%	81%
Kapaa	5	100%	100%	100%	80%	80%	100%	88%
Kauai	5	100%	40%	80%	40%	80%	80%	72%
Waimea	6	100%	50%	83%	100%	83%	100%	82%

Note: Results reflect 235 of 257 eligible schools that completed the survey. Data reported was the most current available at the time of publication.

Source: Hawaii State Department of Health.

Table 23. Percent Meeting Standard on the Hawaii Statewide Assessment Program English Language Arts Assessments by Grade and Complex for SY 2021-22

District	Complex	3	4	5	6	7	8	11	All Tested Grades
ALL SCHOOLS		49%	51%	55%	50%	52%	50%	60%	52%
Department Schools		49%	52%	55%	50%	52%	50%	59%	53%
HONOLULU	Farrington	34%	38%	48%	29%	37%	44%	59%	41%
	Kaiser	62%	71%	72%	69%	76%	65%	54%	67%
	Kalani	73%	75%	79%	74%	75%	78%	76%	76%
	Kaimuki	44%	53%	53%	38%	46%	48%	42%	47%
	McKinley	46%	40%	44%	32%	35%	37%	68%	46%
	Roosevelt	73%	80%	76%	51%	62%	57%	70%	67%
CENTRAL	Aiea	53%	47%	58%	55%	56%	59%	55%	55%
	Moanalua	69%	67%	71%	71%	73%	74%	81%	73%
	Radford	65%	57%	67%	70%	62%	63%	69%	65%
	Leilehua	52%	47%	55%	53%	62%	58%	49%	53%
	Mililani	65%	67%	75%	71%	71%	73%	73%	71%
	Waialua	55%	70%	62%	64%	53%	55%	67%	61%
LEEWARD	Campbell	48%	52%	55%	53%	52%	52%	60%	53%
	Kapolei	52%	59%	61%	50%	50%	59%	55%	55%
	Pearl City	64%	72%	70%	70%	56%	56%	64%	65%
	Waipahu	45%	48%	53%	48%	53%	49%	64%	51%
	Nanakuli	16%	16%	22%	21%	42%	19%	32%	23%
	Waianae	26%	28%	30%	33%	29%	26%	32%	29%
WINDWARD	Castle	46%	53%	59%	53%	54%	42%	69%	53%
	Kahuku	46%	54%	58%	63%	56%	43%	50%	53%
	Kailua	61%	60%	61%	59%	35%	44%	59%	58%
	Kalaheo	61%	64%	65%	61%	69%	74%	74%	67%
HAWAII	Hilo	42%	42%	48%	52%	51%	42%	52%	46%
	Waiakea	52%	48%	54%	41%	55%	43%	69%	51%
	Kau	23%	31%	14%	25%	18%	15%	43%	23%
	Keaau	33%	29%	29%	33%	28%	41%	36%	33%
	Pahoa	19%	30%	24%	32%	36%	30%	48%	30%
	Honokaa	42%	42%	44%	31%	49%	30%	51%	42%
	Kealakehe	34%	39%	36%	31%	40%	35%	53%	38%
	Kohala	17%	38%	39%	40%	30%	36%	55%	37%
Konawaena	32%	43%	53%	36%	53%	46%	65%	46%	
MAUI	Baldwin	34%	48%	50%	37%	42%	34%	55%	43%
	Kekaulike	45%	50%	50%	39%	43%	43%	65%	48%
	Maui	50%	48%	51%	43%	46%	51%	56%	49%
	Hana	n/a	7%	38%	31%	30%	40%	26%	29%
	Lahainaluna	33%	45%	50%	39%	46%	43%	47%	43%
	Lanai	29%	38%	61%	41%	42%	39%	50%	43%
	Molokai	39%	41%	45%	19%	45%	43%	23%	36%
KAUAI	Kapaa	55%	46%	43%	42%	44%	35%	43%	44%
	Kauai	50%	56%	64%	58%	49%	36%	49%	52%
	Waimea	49%	51%	46%	32%	30%	29%	54%	42%
SPECIAL									
Hawaii School for Deaf & Blind		n/a	n/a	n/a	n/a	n/a	n/a	n/a	n/a
Charter Schools		45%	43%	48%	46%	48%	46%	63%	48%

Note: Achievement rates are based on **all students** who were administered the SBA or HSA-Alt.

n/a = Data not reported to maintain student confidentiality (FERPA).

Source: Hawaii State Department of Education: Office of Strategy, Innovation and Performance; Data Governance and Analysis Branch.

Table 24. Percent Meeting Standard on the Hawaii Statewide Assessment Program
Mathematics Assessments by Grade and Complex for SY 2021-22

District	Complex	3	4	5	6	7	8	11	All Tested Grades
ALL SCHOOLS		51%	46%	42%	35%	33%	31%	26%	38%
Department Schools		52%	46%	42%	36%	34%	31%	26%	39%
HONOLULU	Farrington	35%	30%	36%	26%	27%	20%	22%	28%
	Kaiser	64%	62%	59%	56%	46%	57%	36%	55%
	Kalani	77%	68%	65%	60%	67%	65%	54%	65%
	Kaimuki	43%	45%	41%	30%	33%	43%	12%	38%
	McKinley	52%	38%	33%	6%	17%	15%	30%	34%
	Roosevelt	77%	80%	71%	35%	44%	34%	33%	54%
CENTRAL	Aiea	54%	41%	45%	42%	49%	48%	22%	43%
	Moanalua	67%	64%	53%	60%	57%	54%	35%	54%
	Radford	70%	60%	53%	60%	43%	47%	32%	54%
	Leilehua	53%	43%	41%	34%	32%	39%	27%	40%
	Mililani	68%	60%	66%	54%	53%	40%	44%	55%
	Waialua	68%	69%	54%	51%	57%	39%	23%	52%
LEEWARD	Campbell	54%	45%	42%	31%	34%	27%	21%	37%
	Kapolei	51%	52%	44%	29%	28%	35%	25%	39%
	Pearl City	67%	70%	63%	61%	38%	41%	32%	55%
	Waipahu	46%	39%	39%	32%	35%	30%	24%	35%
	Nanakuli	23%	14%	10%	15%	22%	3%	1%	13%
	Waianae	24%	20%	15%	18%	15%	7%	9%	16%
WINDWARD	Castle	49%	50%	42%	40%	31%	26%	20%	39%
	Kahuku	59%	52%	48%	51%	36%	25%	20%	43%
	Kailua	64%	59%	46%	52%	16%	15%	18%	44%
	Kalaheo	63%	58%	52%	52%	44%	41%	38%	50%
HAWAII	Hilo	42%	38%	27%	38%	35%	35%	24%	35%
	Waiakea	52%	38%	40%	20%	37%	27%	34%	35%
	Kau	22%	25%	5%	12%	5%	3%	11%	12%
	Keaau	32%	25%	14%	16%	10%	14%	16%	18%
	Pahoa	13%	16%	12%	19%	21%	19%	13%	16%
	Honokaa	38%	39%	31%	21%	33%	23%	16%	30%
	Kealakehe	31%	28%	16%	15%	21%	22%	23%	22%
	Kohala	29%	30%	20%	15%	8%	13%	9%	18%
Konawaena	32%	34%	38%	20%	21%	28%	21%	28%	
MAUI	Baldwin	40%	42%	33%	19%	25%	23%	20%	30%
	Kekaulike	55%	43%	36%	22%	23%	33%	28%	36%
	Maui	50%	40%	42%	26%	29%	28%	25%	35%
	Hana	n/a	13%	15%	31%	20%	40%	17%	24%
	Lahainaluna	34%	39%	31%	22%	25%	13%	13%	25%
	Lanai	24%	33%	32%	18%	20%	12%	11%	21%
	Molokai	41%	34%	32%	19%	33%	14%	8%	24%
KAUAI	Kapaa	50%	37%	33%	24%	18%	14%	17%	28%
	Kauai	61%	52%	50%	44%	41%	26%	19%	42%
	Waimea	54%	41%	34%	23%	12%	16%	15%	30%
SPECIAL									
Hawaii School for Deaf & Blind		n/a	n/a	n/a	n/a	n/a	n/a	n/a	n/a
Charter Schools		40%	40%	34%	28%	26%	24%	23%	30%

Note: Achievement rates are based on **all students** who were administered the SBA or HSA-Alt.

n/a = Data not reported to maintain student confidentiality (FERPA).

Source: Hawaii State Department of Education: Office of Strategy, Innovation and Performance; Data Governance and Analysis Branch.

Table 25. Percent Meeting Standard on the Hawaii Statewide Assessment Program Science Assessments by Grade and Complex for SY 2021-22

District	Complex	5	8	HS	All Tested Grades
ALL SCHOOLS		44%	39%	35%	40%
Department Schools		45%	39%	35%	40%
HONOLULU	Farrington	40%	27%	32%	33%
	Kaiser	64%	54%	34%	50%
	Kalani	69%	62%	53%	61%
	Kaimuki	42%	44%	30%	42%
	McKinley	33%	14%	26%	27%
	Roosevelt	67%	46%	40%	52%
CENTRAL	Aiea	49%	55%	32%	46%
	Moanalua	59%	63%	51%	57%
	Radford	56%	59%	50%	56%
	Leilehua	43%	48%	33%	42%
	Mililani	63%	63%	48%	57%
	Waialua	44%	32%	38%	38%
LEeward	Campbell	46%	40%	37%	41%
	Kapolei	48%	38%	34%	40%
	Pearl City	63%	52%	43%	54%
	Waipahu	39%	45%	43%	42%
	Nanakuli	13%	8%	7%	11%
	Waianae	21%	17%	21%	20%
WINDWARD	Castle	49%	29%	38%	40%
	Kahuku	47%	21%	43%	37%
	Kailua	55%	27%	32%	42%
	Kalaheo	57%	61%	34%	54%
HAWAII	Hilo	38%	46%	32%	39%
	Waiakea	46%	28%	56%	44%
	Kau	10%	7%	7%	8%
	Keaau	23%	33%	23%	27%
	Pahoa	22%	16%	18%	19%
	Honokaa	35%	19%	20%	27%
	Kealakehe	27%	29%	37%	30%
	Kohala	30%	21%	19%	23%
	Konawaena	32%	33%	36%	34%
MAUI	Baldwin	35%	25%	20%	27%
	Kekaulike	41%	33%	44%	39%
	Maui	39%	34%	28%	34%
	Hana	31%	26%	31%	29%
	Lahainaluna	31%	20%	30%	27%
	Lanai	24%	9%	8%	14%
	Molokai	36%	26%	5%	20%
KAUAI	Kapaa	34%	20%	25%	27%
	Kauai	52%	25%	26%	35%
	Waimea	27%	22%	6%	19%
SPECIAL					
	Hawaii School for Deaf & Blind	n/a	n/a	n/a	n/a
Charter Schools		41%	33%	32%	36%

Note: Achievement rates are based on **all students tested** who were administered either the HSA Science, HSA-Alt, or the Biology I End-of-Course Exam. The achievement rates for high school students are based on students who were administered either the Biology I End-of-Course Exam or the HSA-Alt for grade 11.
n/a = Data not reported to maintain student confidentiality (FERPA).

Source: Hawaii State Department of Education: Office of Strategy, Innovation and Performance; Data Governance and Analysis Branch.

Appendix A. Glossary

This glossary explains the educational and fiscal terms and measures contained in the Data Book. An “n/a” indicates data are “not appropriate” or “not reportable.” A “--” indicates data are missing or unavailable. Due to rounding of percentages, there may be slight differences among published reports (for example, 9.6% may be reported as 10% for the same measure in different reports).

Administrators, School: This is a Full-Time Equivalent (FTE) count of all principals and vice-principals.

Administrators, State and Complex Area: This is an FTE count of the positions responsible for the administrative support of programs, curriculum, and state or federal legal requirements at the complex area and state levels. Examples of FTE positions include complex areas superintendents, evaluation specialists, facilities planners, personnel specialists, test development specialists, budget specialists, information (data) specialists, state and district curriculum/educational specialists, and safety/security program specialists.

Advanced Placement: A program in the United States created by the College Board which offers college-level curricula and examinations to high school students. American colleges and universities may grant placement and course credit to students who obtain high scores on the examinations.

Appropriated Funds: Funds determined by the state legislature and enacted by the governor to provide basic support for the Hawaii State Department of Education to operate a statewide school district. Appropriated Funds include Executive Budget Bill appropriations for the Department and Charter schools plus actual expenditures made by B&F for both Department and Charter schools employer’s share of the cost of the employees’ retirement system and health insurance costs and related debt service. Beginning in FY 2009-10, appropriations for DOE related retirement benefit payments, health premium payments, and debt service payments were transferred to B&F. These amounts have continued to be included in the Appropriated Funds on this report for comparability and to present the total cost of public education.

Attendance Rate: The percentage of the official student enrollment attending school every day during the school year. For example, 95% means that on any given day during the given school year, an average of 95% of the students are present in school.

Average Years Teaching Experience: This is a simple average of the number of years of approved teaching experience within the Hawaii State Department of Education.

Charter Schools: Charter schools are public schools operated and managed by independent governing boards. They operate under a performance contract with the State Public Charter School Commission, the statewide charter school authorizer. The Commission approves quality applications for new charter schools, monitors the performance and legal compliance of existing charter schools, and is responsible to the Board of Education.

Classroom Teachers, FTE or Headcount: An FTE Classroom Teacher count is a position count of all teachers who are directly teaching students. Unlike FTE, “Headcount” is a simple count of the number of teachers who are directly teaching students. Thus, 1.5 FTE teachers may have a headcount of two (one 1.0 FTE and one 0.5 FTE) or three (three teachers in 0.5 FTE positions).

Community Eligibility Provision (CEP): Is a non-pricing meal service option for schools and school districts in low-income areas. CEP allows the nation’s highest poverty schools and districts to serve breakfast and lunch at no cost to all enrolled students without collecting household applications. For additional information visit the U.S. Department of Agriculture Food and Nutrition Service website: <https://www.fns.usda.gov/cn/community-eligibility-provision>.

Complex: This is a smaller division within a Complex Area consisting of a high school and the middle/intermediate and elementary schools within its attendance boundary.

Complex Area: This is an administrative unit made up of two or more complexes.

Demographics, State: Figures reported by the U.S. Census Bureau for years other than decennial 10-year censuses are estimates and are updated periodically. Such estimates in this report are from the American Community Survey. For an explanation of terms, definitions, and criteria used for classification, please visit the U.S. government website for the census: <https://www.census.gov/>.

Dropout Rate: This four-year dropout rate is the percentage of high school students who have not returned to school and have either officially exited as “drop-outs”, have school enrollment statuses that are undetermined, or have not graduated within four years.

Economically Disadvantaged: These are students whose families meet the income qualifications for the federal free/reduced-cost lunch program. This is an indicator of school-community poverty.

English Learners (EL): Students certified as receiving English-as-a-second-language services.

Enrollment Count, Official: The official enrollment count of each school is reported to the state upon the yearly opening of school. A school's enrollment may fluctuate over the course of the school year; thus, a school's enrollment count taken mid-year may be different from its official enrollment count.

Federal Funds: Funds provided by the federal government for use by the state public school system through grants from various federal agencies, such as the U.S. Department of Education (ED), U.S. Department of Defense, and U.S. Department of Agriculture.

Five or More Years at Same School: Percentage of teachers who have taught at one school for five or more years. It is an indicator of school staffing stability. Schools with higher levels of stability are considered most successful in implementing and sustaining school improvement efforts.

Fully Licensed: Teachers who meet the requirements (e.g., earned at least a bachelor's degree and completed an approved teacher training program) to be fully licensed by the Hawaii State Teachers Standards Board.

Full-Time Equivalent (FTE): These are position counts and are the sum of full- and part-time positions. Note that partial counts are possible. For example, one full-time (1.0 FTE) and one half-time (0.5 FTE) would count as 1.5 FTEs.

General Funds: The primary source of funding for the state public school system provided by the state through taxpayer revenues.

Graduation, Graduation Rate, Graduate On Time, Four-Year Graduation: Count or percentage of all high school students, including charter school students, who had completed high school within four years of their 9th-grade entry date. Special Education students receiving certificates of completion and students taking more than four years to complete high school are not included. For more information on the Adjusted Cohort Graduation Rate methodology, see the ESSA Graduation Rate Guidance on the ED website: <https://www2.ed.gov/policy/elsec/leg/essa/essagraterateguidance.pdf>.

Hawaii State Alternate (HSA-Alt) Assessment: The HSA-Alt in English Language Arts, Mathematics and Science are administered to students to promote, improve access to, and measure the attainment of standards for students with significant cognitive disabilities.

Honors Recognition Certificates: Honors Recognition Certificates will be awarded to students who meet the requirements for the Hawaii High School Diploma, attain a cumulative grade point average of 3.0 or above, and earn the required credits for Academic, CTE, or STEM Honors. Students are able to earn a certificate for each honors distinction. For more information on the graduation requirements and the Honors Recognition Certificate requirements visit the Hawaii State Department of Education (HIDOE) website: <http://www.hawaiipublicschools.org/TeachingAndLearning/StudentLearning/GraduationRequirements/Pages/Requirements.aspx>.

Kaipuni Assessment of Education Outcomes (KAEO): Assessments administered in the Hawaiian language to Hawaiian language immersion students in Language Arts, Mathematics, and Science.

National Assessment of Educational Progress (NAEP): A congressionally-mandated project administered by the ED's National Center for Education Statistics (NCES). The NAEP program consists of assessments in a variety of subject areas (e.g., Civics, U.S. History, and Science), and the Every Student Succeeds Act (ESSA) requires districts that receive Title I funding to participate in the NAEP mathematics and reading assessments for grades 4 and 8. NAEP is the only assessment that serves as a common measure of student achievement across the country, providing valuable data on student performance in comparison to other states and long-term trends in student performance within and across key demographic groups. NAEP results have been an important metric to analyze the impact of systemic and school-level efforts on student achievement for nearly the past 30 years. The metrics that NAEP uses include average scale scores and the percentages of students achieving NAEP Advanced, NAEP Proficient, NAEP Basic, and NAEP Below Basic. Advanced and Proficient denote mastery of challenging subject matter, including success on some items that are above the grade level of the students being tested. NAEP defines Basic as denoting partial mastery of prerequisite knowledge and skills that are fundamental for proficient work at each grade assessed. Below Basic means performance below the grade level being tested.

Next Generation Science Standards (NGSS): The Hawaii Board of Education adopted the Next Generation Science Standards (NGSS) to replace the Hawaii Content and Performance Standards III (HCPS III) for Science in 2016. Full implementation took place in SY 2019-20. Due to COVID-19 there was a waiver for statewide assessments in SY 2019-20 and, as a result, the first administration for NGSS-based science assessments was SY 2020-21. Results from the NGSS-based assessments administered in SY 2020-21 are not comparable to the results of HCPS III Science Assessments given newly adopted standards and test items. The results of SY 2020-21 tests will serve as a new baseline for student performance and growth.

Not Suspended, Students: The number of students who are not suspended by the school and an indicator of appropriate student behavior at school.

Others: Percentage of high school completers who received a special education certificate of completion in lieu of a diploma and students who are still attending school and did not graduate in the four-year time frame. These students are not included in the "Dropout" count or in the "Graduation On-time" count.

Perceptions of Safety and Well-Being, Student and Teacher: Positive responses ("Completely Agree", "Strongly Agree" and "Agree") to a set of items on the Hawaii State Department of Education's annual School Quality Survey (SQS) regarding school safety and well-being. The percentage of responses that are positive is reported.

Per-Pupil Expenditure: The numbers reported by the National Center of Education Statistics (NCES) may be used for state-to-state comparisons. Numbers are based on membership and can be expected to be smaller than per-pupil expenditures based on average daily attendance. Current expenditure for public elementary and secondary education in a state is divided by the student membership. Current expenditures are funds spent for the operation of local public schools and local education agencies, including such operating expenses as salaries for school personnel, student transportation, school books and materials, and energy costs, but excluding capital outlay and interest on school debt.

Private Schools: Privately-operated schools not under the direction of the Hawaii State Department of Education.

Retention Rates for Elementary: Percentage of students, excluding kindergartners, who are not promoted to the next grade level. A low retention rate is desired.

Retention Rates for Middle & Intermediate: Percentage of 8th grade students who are not promoted to 9th grade the following year. A low retention rate is desired.

Schools, Total: The total number is the sum of all public schools. All Department, Charter, and special schools are in this count. The Community Schools for Adults are not included.

Section 504: Regulation requiring schools to provide a “free appropriate public education” (FAPE) to each qualified student with a disability who is in the school district’s jurisdiction regardless of the nature or severity of that disability.

Smarter Balanced Assessment (SBA): These tests of the Hawaii Statewide Assessment Program (HSAP) measure student achievement in English Language Arts and Mathematics based on Hawaii State Department of Education content standards. The percentages shown are assessment results. “*Percent Meeting Standard*” is derived from test results that meet or exceed the achievement standard (i.e., achievement cut-score).

Special Education (SPED): This count and percentage contain all special education students listed on the official enrollment report as receiving special education services.

Special Funds: Funds generated through revenue sources other than state taxpayer revenues, such as cafeteria collections from students, adult education tuition/fees, summer school tuition, driver education fees, facility rental fees, and lost textbook penalty fees.

Special Needs, Multiple: Students identified and/or qualified as special needs under more than one of the following categories: economically disadvantaged as determined by receiving free/reduced-cost lunch, Section 504 classification, and certified as receiving special education or English Language Learner services.

State and Local Expenditures Supporting Public Education, Percent: This percentage is published in the annual ED National Center of Education Statistics (NCES) *Digest of Educational Statistics* publication. The percentage is calculated by dividing the states’ “Total, all general expenditures per capita” by the states’ “Elementary and secondary education expenditures per capita.” The “Total, all general expenditures per capita” includes state and local government expenditures for education services, social services, and income maintenance, transportation, public safety, environment and housing, governmental administration, interest on general debt, and other general expenditures, including intergovernmental expenditure to the federal government, as reported by the state’s NCES Common Core of Data Financial Survey.

Support Staff, Other: This is an FTE count that encompasses a wide range of positions that support schools. This category may include, but is not limited to, school assessment liaisons, athletic directors, registrars, state and district resource teachers, school psychologists, custodians, cafeteria workers, school secretaries, school security guards, educational assistants, occupational therapists, mental health assistants, behavioral specialists, and student service coordinators. Note that the assignment of positions to categories is based on ED National Center for Education Statistics Common Core of Data Non-Fiscal Survey requirements.

Trust Funds: Funds segregated for specific purposes, such as foundation grants and athletic gate receipts.

Wellness: Student wellness is affected by nutrition education, the food served in schools, and the amount of physical activity students engage in. The Department of Education also recognizes that when students’ wellness needs are met, they attain higher achievement levels.

Appendix B. References and Resources

Educational and Accountability Reports

Accountability Resource Center Hawaii

This is a web portal for educational accountability information. It complements the many federally- and state-required accountability reports at the school, complex, complex area, and state levels that are available as static documents. Visit the HIDOE's ARCH (Accountability Resource Center Hawaii) website: <http://arch.k12.hi.us>.

Enrollment

These reports have student enrollment figures by districts, state, and grade-level groups and are available on the HIDOE School Reports page:

<http://www.hawaiipublicschools.org/VisionForSuccess/SchoolDataAndReports/SchoolReports/Pages/home.aspx>.

National Assessment of Educational Progress (NAEP)

The NAEP website has a variety of information available to educators and the general public. The NAEP Data Explorer (<https://www.nationsreportcard.gov/ndecore/landing>) is a useful tool to access data on student performance at the national and state level, which can also be disaggregated by key demographic groups. The website also provides access to a Questions Tool (containing numerous released items from the NAEP assessments) and a Take NAEP Now tool that teachers may use as a sample assessment in their classroom. Any questions regarding the NAEP assessments or the resources on the NAEP website may contact NAEP State Coordinator Dewey Gottlieb, at dewey.gottlieb@k12.hi.us or (808) 307-3636. Visit the NAEP website: <https://nationsreportcard.gov>.

School Quality Survey (SQS)

The survey gathers student, parent, and school staff perceptions that are useful for school improvement and planning efforts. The SQS also provides information about parent involvement and parent and student satisfaction with their schools. SQS reports are available on the ARCH website:

<http://arch.k12.hi.us/reports/sqs>.

School Status and Improvement Report (SSIR)

Each SSIR has a description of the school and its setting, a summary of progress in implementing Hawaii State Department of Education standards, and information on school resources and educational outcomes. SSIR reports are available on the ARCH website: <http://arch.k12.hi.us/reports/ssir>.

Strive HI

The current school accountability and improvement system is designed to meet the needs of Hawaii's students, educators, and schools. It aligns and connects our key state education policies and initiatives to position students and educators for success. For more information, visit the ARCH website (<http://arch.k12.hi.us>) or the HIDOE Strive HI Performance System page (<http://www.hawaiipublicschools.org/VisionForSuccess/AdvancingEducation/StriveHIPerformanceSystem/Pages/home.aspx>).

Trend Report: Educational & Fiscal Accountability

This annual report contains three years of trend data on schools, school complexes, and the Hawaii State Department of Education at selected benchmark grade levels with performance indicators in areas relating to student achievement, safety and well-being, and civic responsibility. These reports are designed to present trend data information to the public in a concise format for each complex and school as well as for the state. Trend reports are available on the ARCH website: <http://arch.k12.hi.us/reports/trend-report>.

Financial Reports

Allocations by School Program

These annual reports contain dollar amounts allocated by Allocation Number, Program, or Organization and can be found on the HIDOE Budget page:

<https://www.hawaiipublicschools.org/ConnectWithUs/Organization/Budget/Pages/allocations.aspx>.

Annual Financial Reports

This Annual Financial Report is prepared each year to inform interested persons of the total cost of public education in the State of Hawaii. The reports provide both Operating and Capital Improvement Project fund information that is useful in presenting our educational system's financing, expenditures, and per-pupil information. This report can be found on the HIDOE State Reports page:

<http://www.hawaiipublicschools.org/VisionForSuccess/SchoolDataAndReports/StateReports/Pages/home.aspx>.

Audit

The annual report on the financial audit of the Hawaii State Department of Education forms an opinion on the fairness of the presentation of its financial statements to comply with requirements for state and local governments that receive federal financial assistance. This report can be found on the HIDOE State Reports page:

<http://www.hawaiipublicschools.org/VisionForSuccess/SchoolDataAndReports/StateReports/Pages/home.aspx>.

Budget

These reports have fiscal information on budget restrictions, operating budget allocations (initial and supplemental), emergency appropriations, and biennium budgets and can be found on the HIDOE Budget page: <http://www.hawaiipublicschools.org/ConnectWithUs/Organization/Budget/Pages/home.aspx>.

Special Education Reports

Annual Performance Report & State Performance Plan

These documents are the state's plans and reports in accordance with the Individuals with Disabilities Education Improvement Act of 2004. Included are evaluations of the state's efforts and plans for improving implementation. For more information, visit the HIDOE Special Education Performance Report page:

<http://www.hawaiipublicschools.org/VisionForSuccess/SchoolDataAndReports/StateReports/Pages/Special-Education-Performance-Report.aspx>.

Due Process Hearing Redacted Decisions

The due process hearing redacted decisions are provided for public information. For more information, visit the HIDOE Special Education Performance Report page:

<http://www.hawaiipublicschools.org/VisionForSuccess/SchoolDataAndReports/StateReports/Pages/Special-Education-Performance-Report.aspx>.

Other Resources

Center on the Family

This resource provides access to research reports, informational articles, videos, brochures, and other materials designed to support and strengthen families in Hawaii. The Center on the Family at the University of Hawaii-Manoa (UH-Manoa) also issues an annual report on a core set of indicators reflecting overall well-being of Hawaii families. For more information, visit the UH-Manoa Center on the Family website: <http://uhfamily.hawaii.edu>.

Hawaii P-3

An initiative by Hawaii P-20 to increase children's social-emotional and cognitive development toward the end goal of reading at grade level by third grade. For more information, visit the Hawaii P-3 website: <https://www.hawaiip20.org/p-20-initiatives/early-childhood/>.

Hawaii P-20 Partnerships for Education

A statewide partnership led by the Good Beginnings Alliance, the Hawaii State Department of Education, and the University of Hawaii System to strengthen early childhood through post-secondary education so that all students achieve career and college success. Annual College and Career Readiness reports are available on its website. For more information, visit the Hawaii P-20 website: <https://www.hawaiip20.org/>.

State Public Charter School Commission

The State Public Charter School Commission (SPCSC or Commission) is the statewide charter school authorizer whose mission is to authorize high-quality public charter schools throughout Hawaii. The Commission approves quality applications for new charter schools and monitors the performance and legal compliance of existing charter schools. Charter schools are public schools operated and managed by independent governing boards that are responsible for the schools' financial, organizational, and academic viability. Although they are funded on a "per-pupil" basis separately from Department of Education-operated schools, charter schools are open-enrollment public schools that serve all students and do not charge tuition. Annual reports are available on its website: <http://www.chartercommission.hawaii.gov>.

Appendix C. Supplemental Data Tables

Data tables are available online at <http://arch.k12.hi.us/reports/hidoe-data-book>.

Table 1.	Enrollment in Hawaii Public and Private Schools	1
Table 2.	Enrollment by Complex Area	2
Table 3.	Enrollment of Students with Special Needs.....	3
Table 4.	Special Needs Affecting Public School Students in Hawaii	4
Table 5.	Average Daily Attendance Rates by School Type	5
Table 6.	Four-Year Graduation and Dropout Rates	6
Table 7.	Ethnicity of Students and Teachers	7
Table 8.	Hawaii Statewide Assessment Program Results.....	8
Table 9.	Chapter 19 Suspensions Categorized by Type of Incident.....	9
Table 10.	Administrative Staff as Proportion of Total Staff: Hawaii and Comparison States	10
Table 11.	Expenditure Per Pupil: Hawaii and Comparison States.....	11
Table 12.	Hawaii and States with Similar Financial Resources.....	12
Table 13.	Percent of State and Local Expenditures Supporting Public Education: Hawaii and Comparison States	13
Table 14.	Percent of State and Local Expenditures Supporting Public Education and Per-Pupil Expenditures: All States.....	14