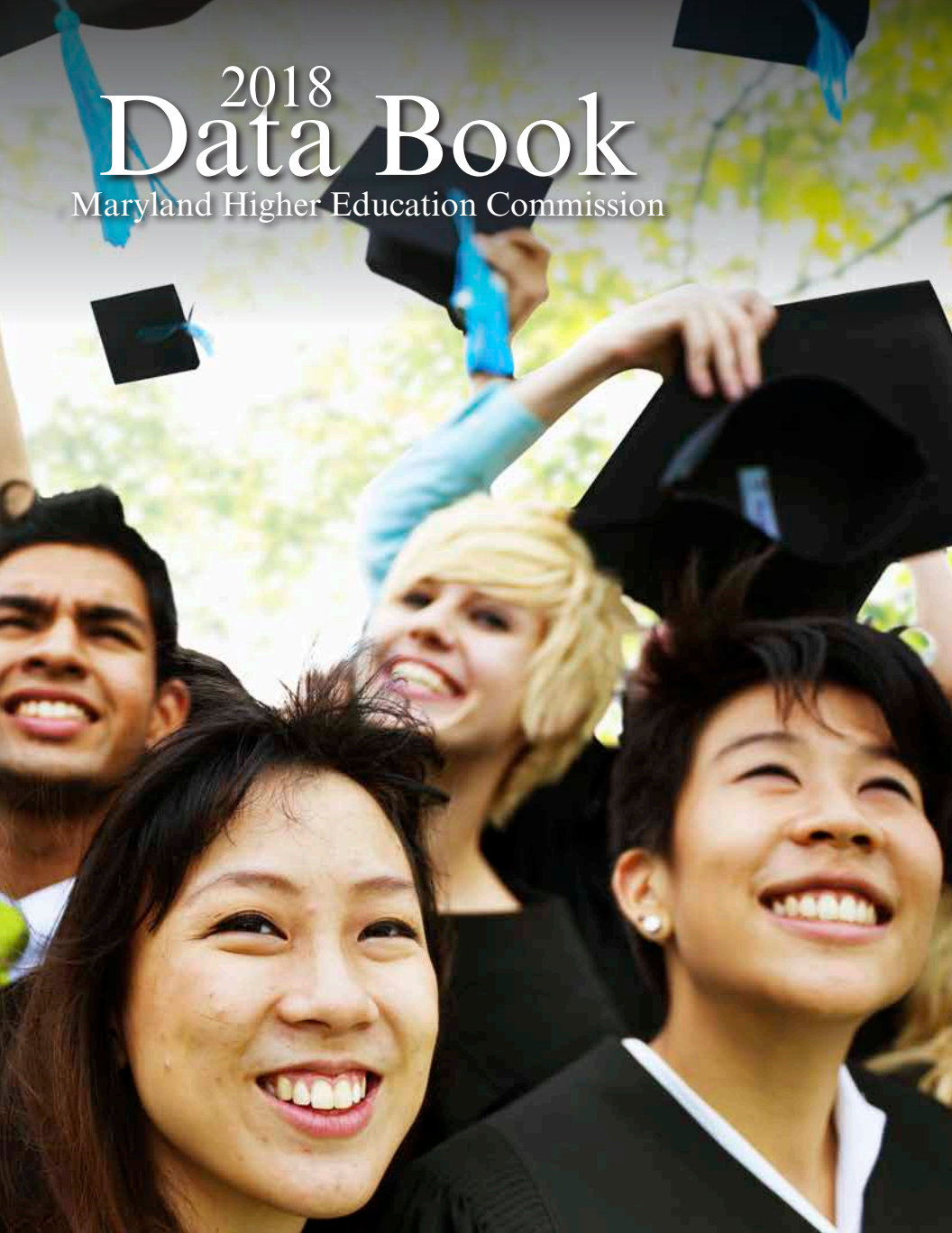


# 2018 Data Book

Maryland Higher Education Commission



creating a state of  
**Achievement**



**MHEC**



**Larry Hogan**  
Governor

**Boyd K. Rutherford**  
Lt. Governor

---

**Maryland Higher  
Education Commission**

Anwer Hasan, Chairman

Sandra L. Jimenez, Vice-Chair

Bryson Barksdale, Student Commissioner

Vivian S. Boyd

John Holaday

Vera R. Jackson

Russell V. Kelley

Ian MacFarlane

Donna M. Mitchell

Joel Packer

Rizwan A. Siddiqi

John W. Yaeger

---

**James D. Fielder, Jr., Ph.D.**  
Secretary

# Table of Contents

---

COMPARATIVE HIGHER EDUCATION STATISTICS: MARYLAND AND THE NATION	1
--	---

## STUDENTS

---

AVERAGE SAT SCORES OF ENTERING FRESHMEN, FALL 2017	2
UNDERGRADUATE ENROLLMENT, FALL 2016	3
GRADUATE AND PROFESSIONAL ENROLLMENT, FALL 2016	5
UNDERGRADUATE STUDENTS AGE 25 AND OLDER, FALL 2016	6
ENROLLMENT BY RACE/ETHNICITY AND BY GENDER, FALL 2016	7
REMEDIATION RATES OF MARYLAND HIGH SCHOOL GRADUATES ENROLLED AT MARYLAND PUBLIC INSTITUTIONS BY PLACE OF RESIDENCE, 2015 - 2016	9
REMEDIATION RATES OF MARYLAND HIGH SCHOOL GRADUATES ENROLLED AT MARYLAND PUBLIC INSTITUTIONS, 2015 - 2016	10
PERCENTAGE PELL ENROLLMENT BY INSTITUTION, FALL 2015	11

## RETENTION & GRADUATION

---

RETENTION AND GRADUATION AT FOUR-YEAR PUBLIC INSTITUTIONS IN MARYLAND	12
FOUR-YEAR COMMUNITY COLLEGE GRADUATION AND TRANSFER RATES, ENTERING CLASS OF 2012	13
NUMBER OF COMMUNITY COLLEGE STUDENTS TRANSFERRING TO PUBLIC FOUR-YEAR INSTITUTIONS IN 2015 - 2016	13
DEGREE PROGRESS FOUR YEARS AFTER INITIAL ENROLLMENT, MARYLAND COMMUNITY COLLEGES, ENTERING CLASS OF 2011	15

## DEGREES

---

DEGREES BY INSTITUTION, 2016-2017	17
DEGREES BY MAJOR PROGRAM: CERTIFICATE AND ASSOCIATE DEGREE PROGRAMS, 2016 - 2017	19
DEGREES BY RACE/ETHNICITY AND BY GENDER, 2016 - 2017	19
DEGREES BY MAJOR PROGRAM: BACHELOR'S, MASTER'S & DOCTORAL DEGREE PROGRAMS, 2016 - 2017	20

## FACULTY & STAFF

---

FULL-TIME AND PART-TIME FACULTY, FALL 2016	21
AVERAGE SALARY OF FULL-TIME FACULTY, FALL 2016	22
FULL-TIME FACULTY BY RACE/ETHNICITY AND BY GENDER, FALL 2016	23
FULL-TIME AND PART-TIME STAFF, FALL 2016	25
FULL-TIME STAFF BY RACE/ETHNICITY AND BY GENDER, FALL 2016	27

## REVENUES & EXPENDITURES

---

COMMUNITY COLLEGES: UNRESTRICTED REVENUES, FY 2017	29
COMMUNITY COLLEGES: UNRESTRICTED EXPENDITURES, FY 2017	29
PUBLIC FOUR-YEAR COLLEGES AND UNIVERSITIES: UNRESTRICTED REVENUES, FY 2017	31
PUBLIC FOUR-YEAR COLLEGES AND UNIVERSITIES: UNRESTRICTED EXPENDITURES, FY 2017	31
AID TO INDEPENDENT INSTITUTIONS, FY 2017	33
TOTAL STATE CAPITAL BUDGET AUTHORIZATIONS BY CAMPUS, FY 2014 - 2018	33

## TUITION & FEES

---

COMMUNITY COLLEGE TUITION AND FEES FOR FULL-TIME STUDENTS (PER CREDIT HOUR), FY 2014 - 2018, RESIDENTS OF SERVICE AREA	35
COMMUNITY COLLEGE TUITION AND FEES FOR FULL-TIME STUDENTS (PER CREDIT HOUR), FY 2014 - 2018, OUT OF SERVICE AREA	35
COMMUNITY COLLEGE TUITION AND FEES FOR FULL-TIME STUDENTS (PER CREDIT HOUR), FY 2014 - 2018, OUT OF STATE RESIDENTS	36
PUBLIC FOUR-YEAR UNDERGRADUATE TUITION AND FEES, FY 2014 - 2018	36
PUBLIC FOUR-YEAR GRADUATE TUITION PER CREDIT HOUR, FY 2014 - 2018	37

## FINANCIAL AID

---

CHARACTERISTICS OF UNDERGRADUATE FINANCIAL AID RECIPIENTS AT COMMUNITY COLLEGES, FY 2014 - 2016	38
CHARACTERISTICS OF UNDERGRADUATE FINANCIAL AID RECIPIENTS AT FOUR-YEAR PUBLIC INSTITUTIONS, FY 2014 - 2016	38
FINANCIAL AID AWARDED AT COMMUNITY COLLEGES, FY 2014 - 2016	39
FINANCIAL AID AWARDED AT FOUR-YEAR PUBLIC INSTITUTIONS, FY 2014 - 2016	39
MARYLAND FINANCIAL AID PROGRAM EXPENDITURES, FY 2017	40

## PRIVATE CAREER SCHOOLS

---

ENROLLMENT BY SCHOOL, 2015 - 2016	41
NUMBER, ENROLLMENT, AND COMPLETION RATE BY SCHOOL TYPE: 2015- 2016	44

## COMPARATIVE HIGHER EDUCATION STATISTICS: MARYLAND AND THE NATION

	MARYLAND	NATION
<b>Educational Attainment (2015)</b>		
At least Some College	64.4%	59.5%
At least an Associate Degree	45.2%	38.8%
At least a Bachelor's Degree	38.7%	30.6%
At least a Graduate or Professional Degree	17.6%	11.6%
College freshmen who had graduated from high school in the same state (Fall 2014)	63.0%	83.0%
<b>SAT Scores for High School Seniors (2017)</b>		
Mean Evidence-Based Reading and Writing Score (EBRW)	536	533
Mean Math Score	524	527
Mean Combined EBRW and Math	1060	1060
<b>Projected Change in the Number of High School Graduates</b>		
FY 2016 to FY 2025 <sup>1</sup>	11.3%	5.5%
<b>Higher Education Enrollments (Fall 2015)</b>		
% Undergraduate	80.9%	85.2%
% Women	55.5%	56.3%
% African American	26.6%	12.6%
% Hispanic	8.0%	15.7%
% Asian	6.8%	5.9%
% White	45.2%	51.7%
% All Minorities <sup>3</sup>	41.7%	38.3%
% Underrepresented Minority <sup>4</sup>	34.9%	29.0%
% Foreign	5.4%	4.9%
<b>Distribution of Campus Enrollments (Fall 2015)</b>		
Public 2-year Institutions	35.2%	31.1%
Public 4-year Institutions	48.4%	41.8%
Private Institutions	16.4%	27.2%
Projected Increase at Public Two-Year Campuses (Fall 15 to Fall 24) <sup>2</sup>	21.8%	12.3%
Projected Increase at Public Four-Year Campuses (Fall 15 to Fall 24) <sup>2</sup>	14.3%	12.5%
<b>Distribution of Degrees Conferred (2014-2015)</b>		
Associate Degrees	23.3%	26.3%
Bachelor's Degrees	47.2%	49.2%
Master's Degrees	25.4%	19.8%
Doctoral/First Professional Degrees	4.1%	4.6%
<b>Average Tuition and Fees for Resident Undergraduates (2017-2018)</b>		
Community Colleges	\$4,536	\$3,570
Four-Year Public Institutions	\$9,575	\$9,970
<b>State Funding for Higher Education</b>		
State Operating Expenses (% change 2015-2016 to 2016-2017)	Up 5.5%	Up 2.7%
State Spending on Student Financial Aid (% change 2014-2015 to 2015-2016)	Down 5.1%	Up 0.9%

### Notes:

<sup>1</sup> The national projection is based upon data provided by the NCES *Projections of Education Statistics to 2024*, Table 10. The estimate includes students attending public schools only. Figures for FY 2016 and FY 2025 are projections.

<sup>2</sup> The Maryland projection is from the Maryland Higher Education Commission's *Enrollment Projections 2015-2024 Maryland Public Colleges and Universities* report, August 2015, and includes the undergraduate headcount of students enrolling in the state's public two-year and four-year institutions. The national projection is from the National Center for Education Statistics, *Projections of Education Statistics to 2024*, Table 14.

<sup>3</sup> The racial/ethnic minority category includes African American, Asian, Hispanic, and Native American students. It does not include students in foreign and/or other categories.

<sup>4</sup> The underrepresented minority category includes African American, Hispanic, and Native American students.

### Sources:

The Chronicle of Higher Education, *Almanac Issue 2017-2018*, August 2017.

The College Board, *State Profile Report: Maryland*, September 2017, Table 1 and Table 4.

The College Board, *SAT Suite of Assessments Annual Report: Total Group*, 2017.

The College Board, *SAT Suite of Assessments Annual Report: Maryland*, 2017.

The College Board, *Trends in College Pricing 2017*, Table 5, Figure 5, and Figure 6.

U.S. Department of Education, National Center for Education Statistics, *Projections of Education Statistics to 2023*, April 2016.

National Association of State Student Grant and Aid Programs, *47th Annual Survey Report on State-Sponsored Student Financial Aid, 2015-2016 Academic Year*, Table 3.



# students

## AVERAGE SAT SCORES OF ENTERING FRESHMEN, Fall 2017

Institution	Evidence-Based Reading and Writing Score	Mathematics	Combined Scores	25th Percentile	75th Percentile
Bowie State University	481	466	947	870	1000
Coppin State University	472	458	930	860	995
Frostburg State University	519	506	1025	930	1110
Salisbury University	609	600	1209	1160	1250
Towson University	574	559	1133	1060	1200
University of Baltimore	512	491	1003	900	1100
University of Maryland, Baltimore County	624	627	1251	1170	1320
University of Maryland, College Park	669	653	1322	1250	1410
University of Maryland Eastern Shore	482	472	954	870	1020
Morgan State University	492	509	1001	930	1060
St. Mary's College of Maryland	596	573	1169	1070	1280
<b>Maryland High School Seniors (2017)</b>	<b>536</b>	<b>524</b>	<b>1060</b>	<b>910</b>	<b>1200</b>
<b>High School Seniors, Nationally (2017)</b>	<b>533</b>	<b>527</b>	<b>1060</b>	<b>920</b>	<b>1200</b>

**Note:**

The College Board implemented a redesigned SAT in 2016. Scores from previous years are not directly comparable.

**Sources:**

Maryland Higher Education Commission, High School Graduation System S-11 Forms, 2017

The College Board, *SAT Suite of Assessments Annual Report: Total Group, 2017*

The College Board, *SAT Suite of Assessments Annual Report: Maryland, 2017*

## UNDERGRADUATE ENROLLMENT, Fall 2016

INSTITUTION	Total	Full-Time	Part-Time			% MD Residents
<b>COMMUNITY COLLEGES</b>						
Allegany College of Maryland	2,930	1,419	48.4%	1,511	51.6%	51.6%
Anne Arundel Community College	13,904	3,907	28.1%	9,997	71.9%	97.3%
Baltimore City Community College	3,791	1,295	34.2%	2,496	65.8%	87.8%
Carroll Community College	3,354	1,164	34.7%	2,190	65.3%	97.4%
Cecil College	2,612	947	36.3%	1,665	63.7%	85.3%
Chesapeake College	2,123	666	31.4%	1,457	68.6%	97.7%
College of Southern Maryland	7,679	2,945	38.4%	4,734	61.6%	99.1%
Community College of Baltimore County	21,193	6,105	28.8%	15,088	71.2%	93.6%
Frederick Community College	6,252	1,996	31.9%	4,256	68.1%	98.1%
Garrett College	753	523	69.5%	230	30.5%	81.3%
Hagerstown Community College	4,061	1,065	26.2%	2,996	73.8%	77.7%
Harford Community College	6,239	2,214	35.5%	4,025	64.5%	96.2%
Howard Community College	9,502	3,582	37.7%	5,920	62.3%	94.2%
Montgomery College	23,916	8,493	35.5%	15,423	64.5%	87.7%
Prince George's Community College	12,417	3,504	28.2%	8,913	71.8%	23.3%
Wor-Wic Community College	3,098	833	26.9%	2,265	73.1%	97.4%
<b>Sub-Total</b>	<b>123,824</b>	<b>40,658</b>	<b>32.8%</b>	<b>83,166</b>	<b>67.2%</b>	<b>84.9%</b>
<b>FOUR-YEAR PUBLIC INSTITUTIONS</b>						
Bowie State University	4,711	3,939	83.6%	772	16.4%	91.4%
Coppin State University	2,507	1,888	75.3%	619	24.7%	77.0%
Frostburg State University	4,884	4,141	84.8%	743	15.2%	92.0%
Salisbury University	7,861	7,250	92.2%	611	7.8%	83.6%
Towson University	19,198	16,893	88.0%	2,305	12.0%	84.6%
University of Baltimore	3,222	1,995	61.9%	1,227	38.1%	94.4%
University of Maryland, Baltimore	905	704	77.8%	201	22.2%	92.7%
University of Maryland, Baltimore County	11,142	9,484	85.1%	1,658	14.9%	91.0%
University of Maryland, College Park	28,472	26,350	92.5%	2,122	7.5%	74.2%
University of Maryland Eastern Shore	3,277	2,918	89.0%	359	11.0%	80.4%
University of Maryland University College	44,219	9,530	21.6%	34,689	78.4%	36.1%
Morgan State University	6,362	5,739	90.2%	623	9.8%	72.9%
St. Mary's College of Maryland	1,638	1,587	96.9%	51	3.1%	92.9%
<b>Sub-Total</b>	<b>138,398</b>	<b>92,418</b>	<b>66.8%</b>	<b>45,980</b>	<b>33.2%</b>	<b>67.5%</b>





## UNDERGRADUATE ENROLLMENT, Fall 2016 (continued)

INSTITUTION	Total	Full-Time	Part-Time	% MD Residents		
<b>STATE-AIDED INDEPENDENT INSTITUTIONS</b>						
Capitol Technology University	437	344	78.7%	93	21.3%	72.3%
Goucher College	1,473	1,444	98.0%	29	2.0%	26.4%
Hood College	1,174	1,090	92.8%	84	7.2%	73.6%
Johns Hopkins University	6,042	5,621	93.0%	421	7.0%	11.5%
Loyola University Maryland	4,104	4,050	98.7%	54	1.3%	18.1%
Maryland Institute College of Art	1,730	1,653	95.5%	77	4.5%	21.4%
McDaniel College	1,600	1,528	95.5%	72	4.5%	64.8%
Mount St. Mary's University	1,729	1,629	94.2%	100	5.8%	56.6%
Notre Dame of Maryland University	875	515	58.9%	360	41.1%	89.3%
St. John's College	434	432	99.5%	2	0.5%	14.5%
Stevenson University	3,621	3,065	84.6%	556	15.4%	78.1%
Washington Adventist University	911	698	76.6%	213	23.4%	77.7%
Washington College	1,479	1,458	98.6%	21	1.4%	41.2%
<b>Sub-Total</b>	<b>25,609</b>	<b>23,527</b>	<b>91.9%</b>	<b>2,082</b>	<b>8.1%</b>	<b>40.5%</b>
<b>OTHER PRIVATE INSTITUTIONS</b>						
Bais HaMedrash and Mesivta of Baltimore	60	60	100.0%	0	0.0%	48.3%
Binah Institute of Advanced Judaic Studies	2	0	0.0%	2	100.0%	0.0%
Brightwood College	944	831	88.0%	113	12.0%	97.8%
Harry Lundeberg School of Seamanship	111	69	62.2%	42	37.8%	5.4%
Lincoln College of Technology	519	411	79.2%	108	20.8%	89.6%
Ner Israel Rabbinical College	281	281	100.0%	0	0.0%	41.3%
St. Mary's Seminary and University	1	1	100.0%	0	0.0%	0.0%
Women's Institute of Torah Seminary	99	58	58.6%	41	41.4%	78.8%
Yeshiva College of the Nation's Capital	31	31	100.0%	0	0.0%	22.6%
<b>Sub-Total</b>	<b>2,048</b>	<b>1,742</b>	<b>85.1%</b>	<b>306</b>	<b>14.9%</b>	<b>79.3%</b>
<b>TOTAL - ALL CAMPUSES</b>	<b>289,879</b>	<b>158,345</b>	<b>54.6%</b>	<b>131,534</b>	<b>45.4%</b>	<b>72.6%</b>

**Note:**

University of Maryland University College figures include both stateside and overseas enrollment.

**Source:**

Maryland Higher Education Commission, Enrollment Information System, 2016



## GRADUATE AND PROFESSIONAL ENROLLMENT, Fall 2016

Institution	Total	Full-Time		Part-Time	
<b>FOUR-YEAR PUBLIC INSTITUTIONS</b>					
Bowie State University	958	412	43.0%	546	57.0%
Coppin State University	432	133	30.8%	299	69.2%
Frostburg State University	792	243	30.7%	549	69.3%
Salisbury University	887	489	55.1%	398	44.9%
Towson University	3,145	1,081	34.4%	2,064	65.6%
University of Baltimore	2,761	1,153	41.8%	1,608	58.2%
University of Maryland, Baltimore	5,577	4,463	80.0%	1,114	20.0%
University of Maryland, Baltimore County	2,498	1,167	46.7%	1,331	53.3%
University of Maryland, College Park	10,611	8,094	76.3%	2,517	23.7%
University of Maryland Eastern Shore	627	397	63.3%	230	36.7%
University of Maryland University College	13,310	99	0.7%	13,211	99.3%
Morgan State University	1,327	997	75.1%	330	24.9%
St. Mary's College of Maryland	31	31	100.0%	0	0.0%
<b>Sub-Total</b>	<b>42,956</b>	<b>18,759</b>	<b>43.7%</b>	<b>24,197</b>	<b>56.3%</b>
<b>STATE-AIDED INDEPENDENT INSTITUTIONS</b>					
Capitol Technology University	336	110	32.7%	226	67.3%
Goucher College	699	136	19.5%	563	80.5%
Hood College	970	176	18.1%	794	81.9%
Johns Hopkins University	17,875	8,342	46.7%	9,533	53.3%
Loyola University Maryland	1,980	557	28.1%	1,423	71.9%
Maryland Institute College of Art	382	280	73.3%	102	26.7%
McDaniel College	1,356	118	8.7%	1,238	91.3%
Mount St. Mary's University	457	184	40.3%	273	59.7%
Notre Dame of Maryland University	1,657	318	19.2%	1,339	80.8%
St. John's College	49	35	71.4%	14	28.6%
Stevenson University	501	86	17.2%	415	82.8%
Washington Adventist University	179	80	44.7%	99	55.3%
Washington College	0	0	0.0%	0	0.0%
<b>Sub-Total</b>	<b>26,441</b>	<b>10,422</b>	<b>39.4%</b>	<b>16,019</b>	<b>60.6%</b>
<b>OTHER PRIVATE INSTITUTIONS</b>					
Maryland University of Integrative Health	1,238	726	58.6%	512	41.4%
Ner Israel Rabbinical College	205	182	88.8%	23	11.2%
SANS Technology Institute	271	0	0.0%	271	100.0%
St. Mary's Seminary and University	187	71	38.0%	116	62.0%
<b>Sub-Total</b>	<b>1,901</b>	<b>979</b>	<b>51.5%</b>	<b>922</b>	<b>48.5%</b>
<b>TOTAL - ALL CAMPUSES</b>	<b>71,298</b>	<b>30,160</b>	<b>42.3%</b>	<b>41,138</b>	<b>57.7%</b>

**Note:**

University of Maryland University College figures include both stateside and overseas enrollment.

**Source:**

Maryland Higher Education Commission, Enrollment Information System, 2016



## UNDERGRADUATE STUDENTS AGE 25 AND OLDER, Fall 2016

Institution	Students	Percentage of Total Undergraduate Enrollment				
		Enrollment	Full-Time	Part-Time		
<b>COMMUNITY COLLEGES</b>						
Allegany College of Maryland	739	25.2%	287	38.8%	452	61.2%
Anne Arundel Community College	5,255	37.8%	781	14.9%	4,474	85.1%
Baltimore City Community College	2,157	56.9%	506	23.5%	1,651	76.5%
Carroll Community College	840	25.0%	102	12.1%	738	87.9%
Cecil College	811	31.0%	169	20.8%	642	79.2%
Chesapeake College	636	30.0%	101	15.9%	535	84.1%
College of Southern Maryland	2,236	29.1%	424	19.0%	1,812	81.0%
Community College of Baltimore County	8,507	40.1%	1,474	17.3%	7,033	82.7%
Frederick Community College	1,874	30.0%	300	16.0%	1,574	84.0%
Garrett College	90	12.0%	40	44.4%	50	55.6%
Hagerstown Community College	1,334	32.8%	182	13.6%	1,152	86.4%
Harford Community College	1,678	26.9%	238	14.2%	1,440	85.8%
Howard Community College	3,295	34.7%	564	17.1%	2,731	82.9%
Montgomery College	8,069	33.7%	1,461	18.1%	6,608	81.9%
Prince George's Community College	5,172	41.6%	720	13.9%	4,452	86.1%
Wor-Wic Community College	1,163	37.5%	196	16.9%	967	83.1%
<b>Sub-Total</b>	<b>43,856</b>	<b>35.4%</b>	<b>7,545</b>	<b>17.2%</b>	<b>36,311</b>	<b>82.8%</b>
<b>FOUR-YEAR PUBLIC INSTITUTIONS</b>						
Bowie State University	1,005	21.3%	584	58.1%	421	41.9%
Coppin State University	1,131	45.1%	640	56.6%	491	43.4%
Frostburg State University	750	15.4%	237	31.6%	513	68.4%
Salisbury University	672	8.5%	462	68.8%	210	31.3%
Towson University	2,314	12.1%	1,340	57.9%	974	42.1%
University of Baltimore	1,696	52.5%	738	43.5%	958	56.5%
University of Maryland, Baltimore	483	53.4%	309	64.0%	174	36.0%
University of Maryland, Baltimore County	1,817	16.3%	998	54.9%	819	45.1%
University of Maryland, College Park	1,912	6.7%	1,141	59.7%	771	40.3%
University of Maryland Eastern Shore	404	12.3%	215	53.2%	189	46.8%
University of Maryland University College	33,890	76.6%	7,073	20.9%	26,817	79.1%
Morgan State University	1,180	18.5%	816	69.2%	364	30.8%
St. Mary's College of Maryland	61	3.7%	34	55.7%	27	44.3%
<b>Sub-Total</b>	<b>47,315</b>	<b>34.2%</b>	<b>14,587</b>	<b>30.8%</b>	<b>32,728</b>	<b>69.2%</b>
<b>STATE-AIDED INDEPENDENT INSTITUTIONS</b>						
Capitol Technology University	118	27.0%	57	48.3%	61	51.7%
Goucher College	30	2.0%	22	73.3%	8	26.7%
Hood College	135	11.5%	84	62.2%	51	37.8%
Johns Hopkins University	324	5.4%	60	18.5%	264	81.5%
Loyola University Maryland	42	1.0%	17	40.5%	25	59.5%
Maryland Institute College of Art	122	7.1%	67	54.9%	55	45.1%
McDaniel College	74	4.3%	39	52.7%	35	47.3%
Mount St. Mary's University	162	9.4%	80	49.4%	82	50.6%
Notre Dame of Maryland University	439	50.0%	104	23.7%	335	76.3%
St. John's College	25	5.8%	25	100.0%	0	0.0%
Stevenson University	592	16.3%	146	24.7%	446	75.3%
Washington Adventist University	291	31.6%	202	69.4%	89	30.6%
Washington College	16	0.9%	9	56.3%	7	43.8%
<b>Sub-Total</b>	<b>2,370</b>	<b>9.2%</b>	<b>912</b>	<b>38.5%</b>	<b>1,458</b>	<b>61.5%</b>
<b>TOTAL - ALL CAMPUSES</b>	<b>93,541</b>	<b>32.5%</b>	<b>23,044</b>	<b>24.6%</b>	<b>70,497</b>	<b>75.4%</b>

**Notes:**

University of Maryland University College figures include both stateside and overseas enrollment.

**Source:**

Maryland Higher Education Commission, Enrollment Information System, 2016

## ENROLLMENT BY RACE/ETHNICITY AND BY GENDER, Fall 2016

INSTITUTION	Total Enrollment	Hispanic/Latino, any race	Black/African American	American Indian or Alaska Native
<b>COMMUNITY COLLEGES</b>				
Allegany College of Maryland	2,930	57	318	6
Anne Arundel Community College	13,904	962	2,379	55
Baltimore City Community College	3,791	93	2,750	5
Carroll Community College	3,354	139	130	9
Cecil College	2,612	145	261	7
Chesapeake College	2,123	120	335	20
College of Southern Maryland	7,679	482	1,959	29
Community College of Baltimore County	21,193	1,059	8,112	67
Frederick Community College	6,252	683	777	21
Garrett College	753	11	188	2
Hagerstown Community College	4,061	247	388	9
Harford Community College	6,239	320	1,000	24
Howard Community College	9,502	1,001	2,747	32
Montgomery College	23,916	5,640	6,769	54
Prince George's Community College	12,417	1,379	8,800	184
Wor-Wic Community College	3,098	137	755	9
<b>Sub-Total</b>	<b>123,824</b>	<b>12,475</b>	<b>37,668</b>	<b>533</b>
<b>FOUR-YEAR PUBLIC INSTITUTIONS</b>				
Bowie State University	5,669	177	4,713	4
Coppin State University	2,939	56	2,278	3
Frostburg State University	5,676	297	1,577	9
Salisbury University	8,748	321	1,154	51
Towson University	22,343	1,448	4,047	33
University of Baltimore	5,983	231	2,513	18
University of Maryland, Baltimore	6,482	400	1,116	9
University of Maryland, Baltimore County	13,640	856	2,234	28
University of Maryland, College Park	39,083	3,200	4,514	45
University of Maryland Eastern Shore	3,904	113	2,737	9
University of Maryland University College	57,529	6,606	16,463	266
Morgan State University	7,689	266	5,738	10
St. Mary's College of Maryland	1,669	143	139	5
<b>Sub-Total</b>	<b>181,354</b>	<b>14,114</b>	<b>49,223</b>	<b>490</b>
<b>STATE-AIDED INDEPENDENT INSTITUTIONS</b>				
Capitol Technology University	773	69	239	2
Goucher College	2,172	143	238	1
Hood College	2,144	138	237	0
Johns Hopkins University	23,917	1,854	1,589	42
Loyola University Maryland	6,084	495	557	9
Maryland Institute College of Art	2,112	148	143	3
McDaniel College	2,956	139	385	7
Mount St. Mary's University	2,186	201	262	11
Notre Dame of Maryland University	2,532	122	585	19
St. John's College	483	21	8	0
Stevenson University	4,122	208	1,155	7
Washington Adventist University	1,090	128	518	10
Washington College	1,479	68	106	9
<b>Sub-Total</b>	<b>52,050</b>	<b>3,734</b>	<b>6,022</b>	<b>120</b>

Not Hispanic/Latino						Gender	
Native Hawaiian or Pacific Islander	Asian	White	Two or More Races	Foreign/ Non-Resident Alien	Unknown	Male	Female
1	13	2,414	62	34	25	1,012	1,918
36	545	8,233	576	193	925	5,710	8,194
4	85	295	72	415	72	1,228	2,563
2	66	2,844	86	5	73	1,340	2,014
1	25	1,981	105	59	28	965	1,647
0	28	1,461	54	29	76	739	1,384
35	255	4,322	448	34	115	3,044	4,635
52	1,294	8,704	734	1,024	147	8,347	12,846
6	283	4,152	280	39	11	2,751	3,501
0	0	521	19	10	2	371	382
4	81	3,029	180	43	80	1,564	2,497
15	163	4,396	198	65	58	2,657	3,582
32	1,123	3,384	453	439	291	4,197	5,305
56	2,688	5,767	689	2,224	29	11,255	12,661
0	607	566	24	336	521	4,763	7,654
3	61	1,946	126	16	45	1,096	2,002
247	7,317	54,015	4,106	4,965	2,498	51,039	72,785
7	67	161	227	207	106	2,093	3,576
1	21	44	48	448	40	699	2,240
2	109	3,136	227	178	141	2,666	3,010
18	256	6,160	284	196	308	3,619	5,129
21	1,227	13,234	981	497	855	8,560	13,783
10	276	2,241	210	208	276	2,450	3,533
3	1,033	3,331	204	286	100	1,840	4,642
17	2,554	5,949	478	1,012	512	7,495	6,145
22	5,336	18,481	1,406	4,878	1,201	20,667	18,416
1	47	510	336	137	14	1,709	2,195
408	2,873	22,493	2,405	1,068	4,947	31,075	26,454
5	85	249	230	952	154	3,611	4,078
0	68	1,160	81	15	58	710	959
515	13,952	77,149	7,117	10,082	8,712	87,194	94,160
1	32	337	25	33	35	621	152
4	67	1,102	59	41	517	606	1,566
2	71	1,359	80	160	97	795	1,349
30	3,205	9,875	765	4,490	2,067	11,325	12,592
8	222	4,495	180	68	50	2,328	3,756
3	253	964	88	411	99	553	1,559
4	82	2,136	0	32	171	1,050	1,906
5	58	1,510	71	36	32	1,058	1,128
7	185	1,498	3	31	82	364	2,168
0	20	344	0	79	11	268	215
6	131	2,297	172	25	121	1,363	2,759
4	90	164	24	14	138	425	665
1	40	1,003	16	169	67	648	831
75	4,456	27,084	1,483	5,589	3,487	21,404	30,646

## ENROLLMENT BY RACE/ETHNICITY AND BY GENDER, Fall 2016 (continued)

INSTITUTION	Total Enrollment	Hispanic/Latino, any race	Black/African American	American Indian or Alaska Native
<b>OTHER PRIVATE INSTITUTIONS</b>				
Bais HaMedrash and Mesivta of Baltimore	60	0	0	0
Binah Institute of Advanced Judaic Study	2	0	0	0
Brightwood College	944	70	695	3
Harry Lundeberg School of Seamanship	111	10	28	1
Lincoln College of Technology	519	76	284	1
Maryland University of Integrative Health	1,238	25	207	13
Ner Israel Rabbinical College	486	0	0	0
SANS Technology Institute	271	24	19	2
St. Mary's Seminary and University	188	4	56	0
Women's Institute of Torah Seminary	99	0	0	0
Yeshiva College of the Nation's Capital	31	0	0	0
<b>Sub-Total</b>	<b>3,949</b>	<b>209</b>	<b>1,289</b>	<b>20</b>
<b>TOTAL - ALL CAMPUSES</b>	<b>361,177</b>	<b>30,532</b>	<b>94,202</b>	<b>1,163</b>

**Notes:**

These categories conform to current federal race and ethnicity definitions. Figures for years before 2010 are not always comparable. University of Maryland University College figures include both stateside and overseas enrollment.

**Source:**

Maryland Higher Education Commission, Enrollment Information System, 2016

## REMIEDIATION RATES OF MARYLAND HIGH SCHOOL GRADUATES ENROLLED AT MARYLAND PUBLIC INSTITUTIONS BY PLACE OF RESIDENCE, 2015-2016

	No Remediation Needed		Remediation Needed		Total # of Students Enrolled
Allegany County	94	41.8%	131	58.2%	225
Anne Arundel County	1,228	45.6%	1,467	54.4%	2,695
Baltimore County	1,681	43.6%	2,172	56.4%	3,853
Calvert County	435	71.1%	177	28.9%	612
Caroline County	76	46.9%	86	53.1%	162
Carroll County	466	48.1%	502	51.9%	968
Cecil County	167	54.0%	142	46.0%	309
Charles County	434	44.3%	545	55.7%	979
Dorchester County	46	41.4%	65	58.6%	111
Frederick County	809	55.8%	640	44.2%	1,449
Garrett County	44	41.9%	61	58.1%	105
Harford County	809	56.0%	636	44.0%	1,445
Howard County	1,432	62.8%	847	37.2%	2,279
Kent County	23	45.1%	28	54.9%	51
Montgomery County	2,950	52.1%	2,717	47.9%	5,667
Prince George's County	956	38.6%	1,521	61.4%	2,477
Queen Anne's County	169	55.6%	135	44.4%	304
Saint Mary's County	385	62.6%	230	37.4%	615
Somerset County	27	34.6%	51	65.4%	78
Talbot County	51	35.9%	91	64.1%	142
Washington County	246	35.8%	442	64.2%	688
Wicomico County	196	44.5%	244	55.5%	440
Worcester County	133	52.0%	123	48.0%	256
Baltimore City	568	30.4%	1,299	69.6%	1,867
<b>TOTAL</b>	<b>13,425</b>	<b>48.3%</b>	<b>14,352</b>	<b>51.7%</b>	<b>27,777</b>

**Source:**

Maryland Higher Education Commission, Enrollment Information System and End of Term System

Not Hispanic/Latino				Foreign/ Non-Resident		Gender	
Native Hawaiian or Pacific Islander	Asian	White	Two or More Races	Alien	Unknown	Male	Female
0	0	55	0	5	0	60	0
0	0	2	0	0	0	0	2
2	14	97	28	0	35	335	609
1	10	55	0	0	6	98	13
2	26	85	22	1	22	467	52
1	62	791	7	41	91	133	1,105
0	0	467	0	19	0	486	0
3	17	183	9	0	14	249	22
0	4	110	0	14	0	117	71
0	0	99	0	0	0	0	99
0	0	31	0	0	0	31	0
9	133	1,975	66	80	168	1,976	1,973
<b>846</b>	<b>25,858</b>	<b>160,223</b>	<b>12,772</b>	<b>20,716</b>	<b>14,865</b>	<b>161,613</b>	<b>199,564</b>

## REMIEDIATION RATES OF MARYLAND HIGH SCHOOL GRADUATES ENROLLED AT MARYLAND PUBLIC INSTITUTIONS, 2015-2016

Institution	No Remediation Needed		Remediation Needed		Total # of Students Enrolled
<b>COMMUNITY COLLEGES</b>					
Allegany College of Maryland	10	4.1%	234	95.9%	244
Anne Arundel Community College	597	27.8%	1,553	72.2%	2,150
Baltimore City Community College	13	3.3%	386	96.7%	399
Carroll Community College	170	25.9%	487	74.1%	657
Cecil College	63	32.3%	132	67.7%	195
Chesapeake College	158	33.8%	309	66.2%	467
College of Southern Maryland	774	47.5%	856	52.5%	1,630
Community College of Baltimore County	542	17.1%	2,627	82.9%	3,169
Frederick Community College	434	42.5%	587	57.5%	1,021
Garrett College	36	21.8%	129	78.2%	165
Hagerstown Community College	125	21.5%	457	78.5%	582
Harford Community College	509	45.7%	606	54.3%	1,115
Howard Community College	421	30.8%	945	69.2%	1,366
Montgomery College	866	24.4%	2,679	75.6%	3,545
Prince George's Community College	41	20.7%	157	79.3%	198
Wor-Wic Community College	105	21.5%	383	78.5%	488
<b>Sub-Total</b>	<b>4,864</b>	<b>28.0%</b>	<b>12,527</b>	<b>72.0%</b>	<b>17,391</b>
<b>FOUR-YEAR PUBLIC INSTITUTIONS</b>					
Bowie State University	38	8.2%	425	91.8%	463
Coppin State University	45	29.8%	106	70.2%	151
Frostburg State University	641	75.1%	213	24.9%	854
Salisbury University	930	100.0%	0	0.0%	930
Towson University	1,578	89.6%	184	10.4%	1,762
University of Baltimore	118	100.0%	0	0.0%	118
University of Maryland, Baltimore County	1,239	91.6%	113	8.4%	1,352
University of Maryland, College Park	3,339	98.5%	51	1.5%	3,390
University of Maryland Eastern Shore	117	16.2%	605	83.8%	722
Morgan State University	230	36.3%	404	63.7%	634
St. Mary's College of Maryland	351	100.0%	0	0.0%	351
<b>Sub-Total</b>	<b>8,626</b>	<b>80.4%</b>	<b>2,101</b>	<b>19.6%</b>	<b>10,727</b>
<b>TOTAL</b>	<b>13,490</b>	<b>48.0%</b>	<b>14,628</b>	<b>52.0%</b>	<b>28,118</b>

**Note:**

Salisbury University and St. Mary's College of Maryland do not offer remedial coursework.

**Source:**

Maryland Higher Education Commission, Enrollment Information System and End of Term System

## PERCENTAGE PELL ENROLLMENT BY INSTITUTION, Fall 2015

Institution	Total
<b>COMMUNITY COLLEGES</b>	
Allegany College of Maryland	54.8%
Anne Arundel Community College	24.5%
Baltimore City Community College	55.6%
Carroll Community College	24.1%
Cecil College	33.9%
Chesapeake College	43.8%
College of Southern Maryland	23.9%
Community College of Baltimore County	42.3%
Frederick Community College	25.6%
Garrett College	59.7%
Hagerstown Community College	38.9%
Harford Community College	26.7%
Howard Community College	30.4%
Montgomery College	32.5%
Prince George's Community College	40.4%
Wor-Wic Community College	51.6%
<b>All Community Colleges</b>	<b>34.8%</b>
<b>FOUR-YEAR PUBLIC INSTITUTIONS</b>	
Bowie State University	51.9%
Coppin State University	60.9%
Frostburg State University	37.0%
Salisbury University	23.3%
Towson University	27.0%
University of Baltimore	42.8%
University of Maryland, Baltimore	20.0%
University of Maryland, Baltimore County	27.9%
University of Maryland, College Park	18.7%
University of Maryland Eastern Shore	55.3%
University of Maryland University College	27.3%
Morgan State University	55.1%
St. Mary's College of Maryland	18.3%
<b>All Public Four-Years</b>	<b>29.5%</b>
<b>TOTAL - ALL PUBLIC CAMPUSES</b>	<b>32.0%</b>

**Note:**

Includes undergraduate students receiving Pell awards during FY16 who were enrolled during the fall semester of 2015.

**Sources:**

Maryland Higher Education Commission, Enrollment Information System and Financial Aid Information System







# retention & graduation

## RETENTION AND GRADUATION AT FOUR-YEAR PUBLIC INSTITUTIONS IN MARYLAND

Institution	All Students		African American Students		Pell Grant Recipients (At Entry)	
	Retention	Graduation	Retention	Graduation	Retention	Graduation
Bowie State University	74.6%	41.4%	74.3%	41.6%	73.4%	37.6%
Coppin State University	61.1%	20.0%	61.9%	20.2%	58.7%	21.4%
Frostburg State University	76.7%	55.2%	78.2%	48.8%	74.0%	53.2%
Salisbury University	82.3%	74.5%	80.0%	70.5%	81.1%	62.5%
Towson University	85.2%	74.1%	88.6%	69.0%	86.5%	71.3%
University of Baltimore	72.3%	39.3%	70.0%	33.0%	78.8%	36.6%
University of Maryland, Baltimore County	84.7%	67.4%	85.1%	61.4%	86.4%	64.5%
University of Maryland, College Park	94.9%	86.2%	94.9%	81.9%	95.7%	82.9%
University of Maryland Eastern Shore	57.9%	42.8%	58.1%	43.8%	55.1%	41.0%
Morgan State University	70.5%	34.7%	70.4%	33.5%	71.2%	29.9%
St. Mary's College of Maryland	86.5%	79.9%	85.7%	67.6%	87.8%	80.0%
<b>STATEWIDE</b>	<b>82.4%</b>	<b>65.5%</b>	<b>74.0%</b>	<b>45.5%</b>	<b>76.9%</b>	<b>51.5%</b>

**Notes:**

Retention rates give the percentage of the 2015 first-time, full-time undergraduate cohort that returned for the second year.

Graduation rates are six-year rates for the 2010 cohort of first-time, full-time undergraduates.

University of Maryland, Baltimore is excluded because it does not enroll first-time freshmen.

University of Maryland University College is excluded because it primarily serves the adult, part-time population.

Pell Grant Recipients are students receiving Pell during the year of entry to the four-year institution.

Statewide figure includes University of Maryland University College (UMUC).

**Sources:**

Maryland Higher Education Commission, Degree Information System, Enrollment Information System, and Financial Aid Information System

## FOUR-YEAR COMMUNITY COLLEGE GRADUATION AND TRANSFER RATES, ENTERING CLASS OF 2012

Institution	All Students		
	Transferred	Graduated	Combined
Allegany College of Maryland	9.7%	24.0%	33.7%
Anne Arundel Community College	27.8%	9.1%	36.9%
Baltimore City Community College	14.9%	8.7%	23.6%
Carroll Community College	27.4%	15.5%	42.9%
Cecil College	9.3%	12.1%	21.4%
Chesapeake College	28.3%	11.0%	39.4%
College of Southern Maryland	30.0%	10.3%	40.2%
Community College of Baltimore County	27.8%	5.5%	33.3%
Frederick Community College	29.4%	14.4%	43.8%
Garrett College	14.2%	14.9%	29.1%
Hagerstown Community College	17.0%	19.0%	36.0%
Harford Community College	30.4%	12.4%	42.9%
Howard Community College	31.4%	7.5%	38.9%
Montgomery College	25.8%	8.1%	33.9%
Prince George's Community College	21.9%	4.8%	26.6%
Wor-Wic Community College	34.2%	8.7%	42.9%
<b>STATEWIDE</b>	<b>26.1%</b>	<b>9.7%</b>	<b>35.8%</b>

**Notes:**

Transfer rates represent students who enrolled at four-year institutions, with or without receiving a degree or certificate.

Graduation rates represent students who earned an associate degree or a certificate but did not transfer.

Pell Grant Recipients include students receiving a Pell Grant during the year of entry to the community college.

Carroll Community College enrolled fewer than 15 first-time, full-time African American students in Fall of 2012.

**Sources:**

Maryland Higher Education Commission, Enrollment Information System, Degree Information System, and Financial Aid Information System

## NUMBER OF COMMUNITY COLLEGE STUDENTS TRANSFERRING TO PUBLIC FOUR-YEAR INSTITUTIONS IN 2015-2016

Institution	BSU	CSU	FSU	SU	TU
Allegany College of Maryland	7	2	136	0	11
Anne Arundel Community College	33	3	22	74	204
Baltimore City Community College	5	72	2	0	22
Carroll Community College	0	2	14	18	80
Cecil College	0	1	2	27	51
Chesapeake College	0	0	4	73	20
College of Southern Maryland	39	3	33	81	107
Community College of Baltimore County	14	49	42	53	719
Frederick Community College	3	0	50	62	150
Garrett College	1	0	65	2	4
Hagerstown Community College	0	1	67	28	33
Harford Community College	8	6	17	59	374
Howard Community College	26	9	33	50	191
Montgomery College	46	4	27	74	211
Prince George's Community College	199	12	11	26	58
Wor-Wic Community College	1	0	6	229	9
<b>TOTAL</b>	<b>382</b>	<b>164</b>	<b>531</b>	<b>856</b>	<b>2,244</b>

**Source:**

Maryland Higher Education Commission, Enrollment Information System

African American Students			Pell Grant Recipients (At Entry)		
Transferred	Graduated	Combined	Transferred	Graduated	Combined
10.7%	4.7%	15.4%	8.6%	23.3%	31.9%
24.2%	6.3%	30.5%	24.7%	7.5%	32.2%
14.1%	8.5%	22.6%	14.3%	6.7%	21.0%
*	*	*	26.8%	15.4%	42.3%
4.8%	4.8%	9.5%	6.1%	9.5%	15.5%
12.5%	3.6%	16.1%	19.9%	10.6%	30.5%
21.6%	4.5%	26.1%	16.0%	10.2%	26.2%
20.5%	2.5%	23.0%	20.1%	3.9%	24.1%
18.3%	12.5%	30.8%	16.0%	16.5%	32.5%
7.9%	4.5%	12.4%	10.9%	13.1%	24.0%
13.7%	15.7%	29.4%	10.7%	13.8%	24.5%
22.2%	5.4%	27.5%	19.6%	11.9%	31.5%
19.9%	4.0%	23.8%	29.8%	5.7%	35.4%
22.7%	4.8%	27.5%	26.9%	6.0%	32.8%
20.6%	3.5%	24.1%	21.8%	5.8%	27.6%
27.9%	2.9%	30.8%	26.1%	5.4%	31.5%
<b>19.9%</b>	<b>4.7%</b>	<b>24.6%</b>	<b>20.6%</b>	<b>8.2%</b>	<b>28.7%</b>

UB	UMB	UMBC	UMCP	UMES	UMUC	MSU	SMC	TOTAL
0	1	2	7	1	4	1	0	172
65	26	192	249	8	239	17	3	1,135
51	11	11	10	1	14	45	0	244
9	2	26	53	0	30	2	4	240
1	0	3	17	0	29	0	0	131
1	2	9	16	5	13	1	0	144
3	13	24	131	3	191	8	37	673
194	36	220	84	8	133	118	7	1,677
7	1	57	109	2	80	0	3	524
2	0	1	1	1	3	1	1	82
1	0	17	26	2	29	0	2	206
26	14	41	49	3	43	10	3	653
42	19	225	217	4	98	13	6	933
36	77	285	833	28	364	19	9	2,013
12	10	62	165	18	224	34	5	836
0	1	6	15	23	11	1	1	303
<b>450</b>	<b>213</b>	<b>1,181</b>	<b>1,982</b>	<b>107</b>	<b>1,505</b>	<b>270</b>	<b>81</b>	<b>9,966</b>

## DEGREE PROGRESS FOUR YEARS AFTER INITIAL ENROLLMENT, MARYLAND COMMUNITY COLLEGES, ENTERING CLASS OF 2011

Institution	Entering Class	Analysis Cohort	All Students	
			Graduation/ Transfer Rate	Successful Persister
Allegany College of Maryland	748	576	55.7%	68.6%
Anne Arundel Community College	3,076	2,241	49.9%	72.1%
Baltimore City Community College	1,337	762	28.7%	45.9%
Carroll Community College	812	626	57.0%	75.2%
Cecil College	749	431	50.3%	61.0%
Chesapeake College	704	430	52.6%	68.6%
College of Southern Maryland	2,091	1,073	54.5%	73.9%
Community College of Baltimore County	5,283	3,159	40.5%	63.3%
Frederick Community College	1,729	1,010	66.8%	80.7%
Garrett College	351	274	61.7%	70.4%
Hagerstown Community College	1,025	645	54.0%	70.9%
Harford Community College	1,722	1,220	56.5%	76.5%
Howard Community College	1,673	1,220	52.4%	76.0%
Montgomery College	4,019	2,919	47.5%	72.8%
Prince George's Community College	2,765	1,759	36.7%	62.8%
Wor-Wic Community College	875	527	45.5%	63.6%
<b>STATEWIDE</b>	<b>28,959</b>	<b>18,872</b>	<b>48.3%</b>	<b>69.3%</b>

**Notes:**

The analysis cohort includes students who attempted at least 18 credit hours within the first two years after initial matriculation.

"College ready" are students who were assessed not to need remediation in any subject area.

"Developmental completers" are students who were assessed to need remediation in at least one subject area and completed all required remedial coursework.

"Developmental non-completers" are students who were assessed to need remediation in at least one subject area and did not complete all required remedial coursework.

"Successful persisters" are students who, within four years after initial enrollment, have completed at least 30 credit hours with a GPA of 2.00 or better, have graduated and/or transferred, or are still enrolled at the institution.

Totals reflect summation of cohort data as reported by the colleges, and derived percentages based solely on the reporting institutions.

**Source:**

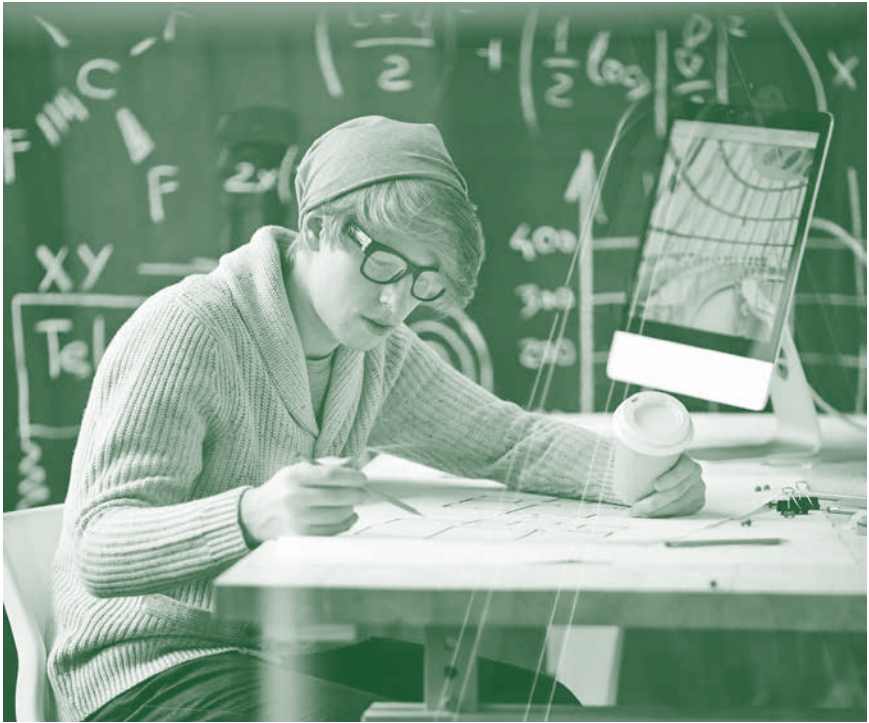
Data provided by individual institutions



College Ready			Developmental Completers			Developmental Non-Completers		
Head Count	Graduation/ Transfer Rate	Successful Persister	Head Count	Graduation/ Transfer Rate	Successful Persister	Head Count	Graduation/ Transfer Rate	Successful Persister
74	73.0%	79.7%	255	63.9%	83.5%	247	42.1%	49.8%
577	67.2%	84.7%	897	57.1%	86.6%	767	28.6%	45.5%
64	39.1%	57.8%	187	36.9%	81.3%	511	24.5%	31.5%
111	76.6%	86.5%	382	62.8%	86.9%	133	24.1%	32.3%
145	71.0%	78.6%	161	52.8%	68.9%	125	23.2%	30.4%
97	71.1%	81.4%	228	55.7%	77.6%	105	28.6%	37.1%
668	59.0%	77.7%	328	50.0%	71.3%	77	35.1%	51.9%
532	57.0%	75.8%	1,345	50.1%	84.3%	1,282	23.5%	36.2%
404	82.9%	90.8%	501	59.5%	79.8%	105	40.0%	45.7%
42	69.0%	85.7%	184	65.2%	73.9%	48	43.8%	43.8%
98	78.6%	89.8%	333	63.7%	84.7%	214	27.6%	40.7%
445	68.1%	88.1%	543	58.2%	82.5%	232	30.2%	40.1%
339	65.8%	83.2%	445	62.9%	93.7%	436	31.2%	52.3%
581	68.5%	85.0%	1,758	46.7%	76.2%	580	29.0%	50.2%
186	46.8%	66.7%	504	53.8%	90.1%	1,069	26.9%	49.3%
70	71.4%	85.7%	251	57.4%	82.9%	206	22.3%	32.5%
<b>4,433</b>	<b>65.9%</b>	<b>82.1%</b>	<b>8,302</b>	<b>54.2%</b>	<b>82.1%</b>	<b>6,137</b>	<b>27.7%</b>	<b>42.7%</b>



# degrees



## DEGREES BY INSTITUTION, 2016-2017

Institution	Lower Division					Total
	Certificate	Associate	Bachelor's	Master's	Doctorate	
<b>COMMUNITY COLLEGES</b>						
Allegany College of Maryland	149	524	0	0	0	673
Anne Arundel Community College	693	1,705	0	0	0	2,398
Baltimore City Community College	108	380	0	0	0	488
Carroll Community College	28	582	0	0	0	610
Cecil College	74	291	0	0	0	365
Chesapeake College	49	250	0	0	0	299
College of Southern Maryland	701	1,272	0	0	0	1,973
Community College of Baltimore County	625	2,133	0	0	0	2,758
Frederick Community College	265	877	0	0	0	1,142
Garrett College	1	111	0	0	0	112
Hagerstown Community College	247	622	0	0	0	869
Harford Community College	58	1,067	0	0	0	1,125
Howard Community College	65	1,241	0	0	0	1,306
Montgomery College	212	2,611	0	0	0	2,823
Prince George's Community College	205	856	0	0	0	1,061
Wor-Wic Community College	153	397	0	0	0	550
<b>Sub-Total</b>	<b>3,633</b>	<b>14,919</b>	<b>0</b>	<b>0</b>	<b>0</b>	<b>18,552</b>

## DEGREES BY INSTITUTION, 2016-2017 (continued)

Institution	Lower Division					Total
	Certificate	Associate	Bachelor's	Master's	Doctorate	
<b>FOUR-YEAR PUBLIC INSTITUTIONS</b>						
Bowie State University	0	0	714	313	9	1,036
Coppin State University	0	0	428	78	2	508
Frostburg State University	0	0	1,101	268	12	1,381
Salisbury University	0	0	2,090	308	1	2,399
Towson University	0	0	4,834	920	36	5,790
University of Baltimore	0	0	755	561	225	1,541
University of Maryland, Baltimore	0	0	416	827	828	2,071
University of Maryland, Baltimore County	0	0	2,665	631	88	3,384
University of Maryland, College Park	12	0	7,292	2,829	592	10,725
University of Maryland Eastern Shore	0	0	516	50	108	674
University of Maryland University College	0	1,530	5,930	3,780	27	11,267
Morgan State University	0	0	935	306	54	1,295
St. Mary's College of Maryland	0	0	501	30	0	531
<b>Sub-Total</b>	<b>12</b>	<b>1,530</b>	<b>28,177</b>	<b>10,901</b>	<b>1,982</b>	<b>42,602</b>
<b>STATE-AIDED INDEPENDENT INSTITUTIONS</b>						
Capitol Technology University	0	0	74	82	20	176
Goucher College	0	0	358	106	0	464
Hood College	0	0	308	231	0	539
Johns Hopkins University	0	0	1,849	5,643	682	8,174
Loyola University Maryland	0	0	940	721	20	1,681
Maryland Institute College of Art	0	0	385	182	0	567
McDaniel College	0	0	432	277	0	709
Mount St. Mary's University	0	0	431	161	0	592
Notre Dame of Maryland University	0	0	343	321	62	726
St. John's College	0	0	93	31	0	124
Stevenson University	0	0	831	222	0	1,053
Washington Adventist University	0	8	147	71	0	226
Washington College	0	0	336	0	0	336
<b>Sub-Total</b>	<b>0</b>	<b>8</b>	<b>6,527</b>	<b>8,048</b>	<b>784</b>	<b>15,367</b>
<b>OTHER PRIVATE INSTITUTIONS</b>						
Bais HaMedrash and Mesivta of Baltimore	0	0	10	0	0	10
Brightwood College	663	84	0	0	0	747
Lincoln College of Technology	247	104	0	0	0	351
Maryland University of Integrative Health	0	0	0	228	54	282
Ner Israel Rabbinical College	0	0	38	35	10	83
SANS Technology Institute	0	0	0	15	0	15
St. Mary's Seminary and University	0	0	0	23	0	23
Women's Institute of Torah Seminary	0	0	38	0	0	38
Yeshiva College of Nations Capital	0	0	10	0	0	10
<b>Sub-Total</b>	<b>910</b>	<b>188</b>	<b>96</b>	<b>301</b>	<b>64</b>	<b>1,559</b>
<b>TOTAL - ALL CAMPUSES</b>	<b>4,555</b>	<b>16,645</b>	<b>34,800</b>	<b>19,250</b>	<b>2,830</b>	<b>78,080</b>

**Source:**

Maryland Higher Education Commission, Degree Information System, 2017

## DEGREES BY MAJOR PROGRAM: CERTIFICATE AND ASSOCIATE DEGREE PROGRAMS, 2016-2017

Major	Lower Division		Associate	Total
	Certificate			
<b>TRANSFER MAJORS</b>				
Arts & Sciences	27		2,107	2,134
Biological & Physical Sciences	0		13	13
Fine Arts	0		3	3
Health	0		6	6
Humanities & Social Sciences	0		151	151
Engineering	0		361	361
General Studies	456		6,565	7,021
Teacher Education, General	0		117	117
Early Childhood Education (AAT)	0		111	111
Elementary Education/Generic Special Education (AAT)	0		171	171
Secondary Education - General	0		3	3
Secondary Education - Chemistry (AAT)	0		2	2
Secondary Education - English (AAT)	0		15	15
Secondary Education - Mathematics (AAT)	0		5	5
Secondary Education - Spanish (AAT)	0		3	3
Business Administration	0		1,328	1,328
Computer Science	3		329	332
Other/Interdisciplinary	4		28	32
<b>Sub-Total</b>	<b>490</b>		<b>11,318</b>	<b>11,808</b>
<b>APPLIED MAJORS</b>				
Business & Commerce Technologies	823		845	1,668
Data Processing Technologies	576		770	1,346
Health Services & Paramedical Technologies	1,405		2,577	3,982
Mechanical & Engineering Technologies	503		429	932
Natural Science Technologies	84		91	175
Public Service Technologies	674		615	1,289
<b>Sub-Total</b>	<b>4,065</b>		<b>5,327</b>	<b>9,392</b>
<b>TOTAL</b>	<b>4,555</b>		<b>16,645</b>	<b>21,200</b>

**Source:**

Maryland Higher Education Commission, Degree Information System, 2017

## DEGREES BY RACE/ETHNICITY AND BY GENDER, 2016-2017

	Lower Division		Associate		Sub-Total	
	Certificate					
Hispanic/Latino, any race	280	6.1%	1,518	9.1%	1,798	8.5%
Not Hispanic/Latino:						
Black/African American	1,380	30.3%	3,601	21.6%	4,981	23.5%
American Indian or Alaska Native	22	0.5%	69	0.4%	91	0.4%
Native Hawaiian or Pacific Islander	4	0.1%	38	0.2%	42	0.2%
Asian	157	3.4%	985	5.9%	1,142	5.4%
White	2,235	49.1%	8,867	53.3%	11,102	52.4%
Two or More Races	121	2.7%	483	2.9%	604	2.8%
Foreign/Non-Resident Alien	179	3.9%	664	4.0%	843	4.0%
Unknown	177	3.9%	420	2.5%	597	2.8%
<b>TOTAL</b>	<b>4,555</b>	<b>100.0%</b>	<b>16,645</b>	<b>100.0%</b>	<b>21,200</b>	<b>100.0%</b>
Men	1,980	43.5%	7,018	42.2%	8,998	42.4%
Women	2,575	56.5%	9,627	57.8%	12,202	57.6%
<b>TOTAL</b>	<b>4,555</b>	<b>100.0%</b>	<b>16,645</b>	<b>100.0%</b>	<b>21,200</b>	<b>100.0%</b>

**Source:**

Maryland Higher Education Commission, Degree Information System, 2017



**DEGREES BY MAJOR PROGRAM: BACHELOR'S, MASTER'S,  
AND DOCTORAL DEGREE PROGRAMS, 2016-2017**

<b>Major</b>	<b>Bachelor's</b>	<b>Master's</b>	<b>Doctorate</b>	<b>Total</b>
Agriculture	367	36	29	432
Architecture	82	77	5	164
Area Studies	177	13	14	204
Biological Science	2,189	735	276	3,200
Business	6,077	5,409	46	11,532
Communications	1,881	267	11	2,159
Computer Science	3,486	2,373	96	5,955
Education	2,360	2,732	153	5,245
Engineering	1,847	1,147	240	3,234
Fine Arts	1,456	351	35	1,842
Health	3,090	1,834	1,077	6,001
Home Economics	238	101	4	343
Languages	324	21	11	356
Law	141	92	411	644
Letters	1,050	191	29	1,270
Library Science	0	71	2	73
Mathematics	510	153	41	704
Physical Science	507	178	128	813
Psychology	2,257	550	59	2,866
Public Affairs	1,142	955	14	2,111
Social Science	4,469	1,390	120	5,979
Theology	48	101	10	159
Interdisciplinary	1,102	473	19	1,594
<b>TOTAL</b>	<b>34,800</b>	<b>19,250</b>	<b>2,830</b>	<b>56,880</b>

**Source:**

Maryland Higher Education Commission, Degree Information System, 2017

<b>Bachelor's</b>		<b>Master's</b>		<b>Doctorate</b>		<b>Sub-Total</b>		<b>TOTAL</b>	
2,580	7.4%	954	5.0%	118	4.2%	3,652	6.4%	5,450	7.0%
7,110	20.4%	3,410	17.7%	346	12.2%	10,866	19.1%	15,847	20.3%
77	0.2%	31	0.2%	4	0.1%	112	0.2%	203	0.3%
54	0.2%	31	0.2%	1	0.0%	86	0.2%	128	0.2%
3,139	9.0%	1,244	6.5%	360	12.7%	4,743	8.3%	5,885	7.5%
18,134	52.1%	8,459	43.9%	1,333	47.1%	27,926	49.1%	39,028	50.0%
1,327	3.8%	502	2.6%	78	2.8%	1,907	3.4%	2,511	3.2%
1,115	3.2%	3,563	18.5%	500	17.7%	5,178	9.1%	6,021	7.7%
1,264	3.6%	1,056	5.5%	90	3.2%	2,410	4.2%	3,007	3.9%
<b>34,800</b>	<b>100.0%</b>	<b>19,250</b>	<b>100.0%</b>	<b>2,830</b>	<b>100.0%</b>	<b>56,880</b>	<b>100.0%</b>	<b>78,080</b>	<b>100.0%</b>
15,156	43.6%	8,067	41.9%	1,298	45.9%	24,521	43.1%	33,519	42.9%
19,644	56.4%	11,183	58.1%	1,532	54.1%	32,359	56.9%	44,561	57.1%
<b>34,800</b>	<b>100.0%</b>	<b>19,250</b>	<b>100.0%</b>	<b>2,830</b>	<b>100.0%</b>	<b>56,880</b>	<b>100.0%</b>	<b>78,080</b>	<b>100.0%</b>

# faculty & staff

## FULL-TIME AND PART-TIME FACULTY, Fall 2016

Institution	Full-Time		Part-Time		Total
<b>COMMUNITY COLLEGES</b>					
Allegany College of Maryland	103	45.8%	122	54.2%	225
Anne Arundel Community College	255	28.7%	634	71.3%	889
Baltimore City Community College	103	44.8%	127	55.2%	230
Carroll Community College	75	30.0%	175	70.0%	250
Cecil College	50	21.1%	187	78.9%	237
Chesapeake College	57	50.4%	56	49.6%	113
College of Southern Maryland	120	25.5%	351	74.5%	471
Community College of Baltimore County	430	35.7%	773	64.3%	1,203
Frederick Community College	99	20.8%	376	79.2%	475
Garrett College	21	38.2%	34	61.8%	55
Hagerstown Community College	80	35.7%	144	64.3%	224
Harford Community College	101	29.8%	238	70.2%	339
Howard Community College	197	24.1%	622	75.9%	819
Montgomery College	498	34.6%	940	65.4%	1,438
Prince George's Community College	232	32.2%	488	67.8%	720
Wor-Wic Community College	71	45.2%	86	54.8%	157
<b>Sub-Total</b>	<b>2,492</b>	<b>31.8%</b>	<b>5,353</b>	<b>68.2%</b>	<b>7,845</b>
<b>FOUR-YEAR PUBLIC INSTITUTIONS</b>					
Bowie State University	219	49.7%	222	50.3%	441
Coppin State University	132	49.4%	135	50.6%	267
Frostburg State University	259	66.9%	128	33.1%	387
Salisbury University	410	64.5%	226	35.5%	636
Towson University	902	54.3%	758	45.7%	1,660
University of Baltimore	195	46.7%	223	53.3%	418
University of Maryland, Baltimore	411	37.5%	686	62.5%	1,097
University of Maryland, Baltimore County	538	65.9%	278	34.1%	816
University of Maryland, College Park	1,803	70.0%	772	30.0%	2,575
University of Maryland Eastern Shore	219	67.2%	107	32.8%	326
University of Maryland University College	200	5.8%	3,237	94.2%	3,437
Morgan State University	461	66.0%	237	34.0%	698
St. Mary's College of Maryland	146	76.8%	44	23.2%	190
<b>Sub-Total</b>	<b>5,895</b>	<b>45.5%</b>	<b>7,053</b>	<b>54.5%</b>	<b>12,948</b>
<b>TOTAL - ALL CAMPUSES</b>	<b>8,387</b>	<b>40.3%</b>	<b>12,406</b>	<b>59.7%</b>	<b>20,793</b>

**Notes:**

Figures include instructional faculty, excluding pre-clinical and clinical medicine faculty at UMB and continuing education faculty. Faculty may be employed by more than one institution. They are included at each institution by which they are employed.

**Source:**

Maryland Higher Education Commission, Employee Data System, 2016

## AVERAGE SALARY OF FULL-TIME FACULTY, Fall 2016

INSTITUTION	Associate		Assistant		Lecturer	CAMPUS AVERAGE
	Professor	Professor	Professor	Instructor		
<b>COMMUNITY COLLEGES</b>						
Allegany College of Maryland	\$67,553	\$55,269	\$48,590	\$51,682	–	\$56,027
Anne Arundel Community College	87,492	75,309	65,302	58,839	–	75,013
Baltimore City Community College	82,086	71,894	60,821	–	–	66,597
Carroll Community College	74,851	66,171	53,096	46,668	–	59,375
Cecil College	77,495	68,283	54,841	37,500	–	64,822
Chesapeake College	79,422	69,386	66,637	55,759	64,793	66,481
College of Southern Maryland	93,100	73,987	64,099	59,851	–	85,287
Community College of Baltimore County	98,324	80,501	68,948	60,153	–	75,504
Frederick Community College	91,259	69,605	60,991	–	–	69,236
Garrett College	71,947	62,591	55,725	7,200	–	60,902
Hagerstown Community College	78,244	64,890	57,561	53,496	–	60,550
Harford Community College	83,326	65,838	55,104	–	–	66,405
Howard Community College	89,256	70,933	64,661	59,447	–	72,747
Montgomery College	97,140	80,838	74,095	76,928	–	88,880
Prince George's Community College	79,434	69,347	60,537	–	–	71,046
Wor-Wic Community College	75,300	70,509	56,413	46,600	–	60,712
<b>Community College Average</b>	<b>\$89,891</b>	<b>\$73,753</b>	<b>\$63,385</b>	<b>\$56,425</b>	<b>\$64,793</b>	<b>\$74,364</b>
<b>FOUR-YEAR PUBLIC INSTITUTIONS</b>						
Bowie State University	\$97,947	\$81,138	\$72,123	\$71,180	\$60,195	\$77,487
Coppin State University	93,259	75,313	75,995	52,070	–	77,115
Frostburg State University	92,407	74,408	67,815	62,225	45,598	72,681
Salisbury University	95,467	79,853	71,055	69,088	52,064	75,529
Towson University	97,559	81,818	70,733	66,799	42,878	72,346
University of Baltimore	153,497	108,734	83,384	–	71,851	107,482
University of Maryland, Baltimore	183,005	134,050	108,441	86,023	–	130,311
University of Maryland, Baltimore County	135,033	91,888	78,114	69,029	60,209	95,371
University of Maryland, College Park	178,797	116,188	99,407	84,785	63,058	131,211
University of Maryland Eastern Shore	102,476	86,398	75,783	74,285	57,462	79,834
University of Maryland University College	89,691	58,660	45,511	33,825	–	72,493
Morgan State University	136,365	93,046	78,822	50,452	51,847	82,665
St. Mary's College of Maryland	91,498	69,702	56,691	–	28,560	72,850
<b>Four-Year Public Average</b>	<b>\$142,101</b>	<b>\$95,742</b>	<b>\$82,146</b>	<b>\$74,492</b>	<b>\$54,490</b>	<b>\$98,832</b>

### Notes:

Campus average excludes unranked faculty.

Campus and segment averages are weighted by the number of faculty at each rank at each institution.

Figures include instructional faculty, excluding pre-clinical and clinical medicine faculty at UMB and continuing education faculty.

Faculty may be employed by more than one institution. They are included at each institution by which they are employed.

### Source:

Maryland Higher Education Commission, Employee Data System, 2016



## FULL-TIME FACULTY BY RACE/ETHNICITY AND BY GENDER, Fall 2016

Institution	Hispanic/Latino, any race	Not Hispanic/Latino	
		Black/ African American	American Indian or Alaska Native
<b>COMMUNITY COLLEGES</b>			
Allegany College of Maryland	1	0	0
Anne Arundel Community College	5	27	1
Baltimore City Community College	0	62	0
Carroll Community College	1	2	0
Cecil College	1	4	0
Chesapeake College	0	2	0
College of Southern Maryland	5	17	1
Community College of Baltimore County	16	72	0
Frederick Community College	2	10	0
Garrett College	1	0	0
Hagerstown Community College	1	1	0
Harford Community College	2	6	0
Howard Community College	4	25	0
Montgomery College	25	71	6
Prince George's Community College	4	86	0
Wor-Wic Community College	0	4	0
<b>Sub-Total</b>	<b>68</b>	<b>389</b>	<b>8</b>
<b>FOUR-YEAR PUBLIC INSTITUTIONS</b>			
Bowie State University	11	141	0
Coppin State University	2	90	0
Frostburg State University	5	10	0
Salisbury University	7	24	0
Towson University	23	50	1
University of Baltimore	4	17	0
University of Maryland, Baltimore	10	55	3
University of Maryland, Baltimore County	19	34	0
University of Maryland, College Park	85	89	3
University of Maryland Eastern Shore	7	78	1
University of Maryland University College	4	16	2
Morgan State University	6	209	3
St. Mary's College of Maryland	5	8	0
<b>Sub-Total</b>	<b>188</b>	<b>821</b>	<b>13</b>
<b>TOTAL - ALL CAMPUSES</b>	<b>256</b>	<b>1,210</b>	<b>21</b>

**Notes:**

These categories conform to current federal race and ethnicity definitions. Figures for years before 2010 are not always comparable. Figures include instructional faculty, excluding pre-clinical and clinical medicine faculty at UMB and continuing education faculty. Faculty may be employed by more than one institution. They are included at each institution by which they are employed.

**Source:**

Maryland Higher Education Commission, Employee Data System, 2016



Native Hawaiian or Pacific Islander	Asian	White	Two or More Races	Foreign/ Non-Resident		Gender	
				Alien	Unknown	Male	Female
0	1	101	0	0	0	40	63
0	13	207	0	0	2	94	161
0	5	24	0	12	0	43	60
0	2	69	0	0	1	18	57
0	2	43	0	0	0	20	30
0	2	52	0	0	1	18	39
0	4	91	1	0	1	47	73
0	20	312	3	0	7	164	266
0	5	81	0	0	1	43	56
0	1	19	0	0	0	13	8
0	0	76	1	0	1	26	54
0	2	91	0	0	0	42	59
0	15	137	0	15	1	65	132
0	28	317	1	49	1	199	299
0	14	113	1	4	10	86	146
0	2	65	0	0	0	21	50
0	116	1,798	7	80	26	939	1,553
0	11	33	1	3	19	101	118
0	10	22	1	7	0	65	67
0	20	214	0	10	0	150	109
0	31	340	1	4	3	207	203
2	102	697	6	4	17	399	503
0	19	147	0	6	2	112	83
1	44	289	0	8	1	145	266
0	81	384	2	18	0	282	256
2	232	1,186	11	47	148	1,124	679
1	38	78	3	10	3	125	94
0	17	142	3	4	12	115	85
1	31	71	8	62	70	260	201
0	7	122	1	3	0	77	69
7	643	3,725	37	186	275	3,162	2,733
<b>7</b>	<b>759</b>	<b>5,523</b>	<b>44</b>	<b>266</b>	<b>301</b>	<b>4,101</b>	<b>4,286</b>



## FULL-TIME AND PART-TIME STAFF, Fall 2016

Institution	Full-Time		Part-Time		Total
<b>COMMUNITY COLLEGES</b>					
Allegheny College of Maryland	189	67.5%	91	32.5%	280
Anne Arundel Community College	613	93.3%	44	6.7%	657
Baltimore City Community College	284	60.6%	185	39.4%	469
Carroll Community College	183	68.3%	85	31.7%	268
Cecil College	119	50.2%	118	49.8%	237
Chesapeake College	163	64.7%	89	35.3%	252
College of Southern Maryland	366	49.8%	369	50.2%	735
Community College of Baltimore County	875	51.4%	826	48.6%	1,701
Frederick Community College	278	57.0%	210	43.0%	488
Garrett College	98	74.8%	33	25.2%	131
Hagerstown Community College	210	75.0%	70	25.0%	280
Harford Community College	247	44.3%	311	55.7%	558
Howard Community College	435	92.2%	37	7.8%	472
Montgomery College	1,348	95.0%	71	5.0%	1,419
Prince George's Community College	486	61.1%	310	38.9%	796
Wor-Wic Community College	162	81.8%	36	18.2%	198
<b>Sub-Total</b>	<b>6,056</b>	<b>67.7%</b>	<b>2,885</b>	<b>32.3%</b>	<b>8,941</b>
<b>FOUR-YEAR PUBLIC INSTITUTIONS</b>					
Bowie State University	372	90.5%	39	9.5%	411
Coppin State University	325	86.2%	52	13.8%	377
Frostburg State University	493	75.0%	164	25.0%	657
Salisbury University	632	57.7%	464	42.3%	1,096
Towson University	1,380	79.8%	349	20.2%	1,729
University of Baltimore	437	77.5%	127	22.5%	564
University of Maryland, Baltimore	1,724	84.8%	309	15.2%	2,033
University of Maryland, Baltimore County	1,263	96.2%	50	3.8%	1,313
University of Maryland, College Park	5,474	96.1%	223	3.9%	5,697
University of Maryland Eastern Shore	525	97.8%	12	2.2%	537
University of Maryland University College	1,385	94.9%	74	5.1%	1,459
Morgan State University	970	71.3%	390	28.7%	1,360
St. Mary's College of Maryland	235	75.8%	75	24.2%	310
<b>Sub-Total</b>	<b>15,215</b>	<b>86.7%</b>	<b>2,328</b>	<b>13.3%</b>	<b>17,543</b>
<b>TOTAL - ALL CAMPUSES</b>	<b>21,271</b>	<b>80.3%</b>	<b>5,213</b>	<b>19.7%</b>	<b>26,484</b>

**Notes:**

Persons categorized as graduate assistants are not included in staff totals.

Employees categorized as instructional, instructional combined with research and/or public service, research, or public service are counted as faculty and not included in staff totals.

Staff may be employed by more than one institution. They are included at each institution by which they are employed.

**Source:**

Maryland Higher Education Commission, Employee Data System, 2016





## FULL-TIME STAFF BY RACE/ETHNICITY AND BY GENDER, Fall 2016

Institution	Hispanic/Latino, any race	Not Hispanic/Latino	
		Black/ African American	American Indian or Alaska Native
<b>COMMUNITY COLLEGES</b>			
Allegany College of Maryland	0	2	0
Anne Arundel Community College	13	96	1
Baltimore City Community College	4	212	2
Carroll Community College	4	6	0
Cecil College	3	7	2
Chesapeake College	4	27	0
College of Southern Maryland	12	96	2
Community College of Baltimore County	14	245	3
Frederick Community College	10	39	0
Garrett College	0	2	0
Hagerstown Community College	4	11	1
Harford Community College	5	25	0
Howard Community College	12	101	1
Montgomery College	86	388	4
Prince George's Community College	14	316	3
Wor-Wic Community College	1	22	1
<b>Sub-Total</b>	<b>186</b>	<b>1,595</b>	<b>20</b>
<b>FOUR-YEAR PUBLIC INSTITUTIONS</b>			
Bowie State University	4	280	0
Coppin State University	3	276	0
Frostburg State University	2	15	0
Salisbury University	13	124	0
Towson University	31	250	1
University of Baltimore	7	158	0
University of Maryland, Baltimore	33	709	3
University of Maryland, Baltimore County	28	275	0
University of Maryland, College Park	519	1,263	11
University of Maryland Eastern Shore	11	387	3
University of Maryland University College	71	374	5
Morgan State University	29	725	4
St. Mary's College of Maryland	9	40	1
<b>Sub-Total</b>	<b>760</b>	<b>4,876</b>	<b>28</b>
<b>TOTAL - ALL CAMPUSES</b>	<b>946</b>	<b>6,471</b>	<b>48</b>

**Notes:**

These categories conform to current federal race and ethnicity definitions.

Persons categorized as graduate assistants are not included in staff totals.

Persons categorized as instructional, instructional combined with research and/or public service, research, or public service are counted as faculty and not included in staff totals.

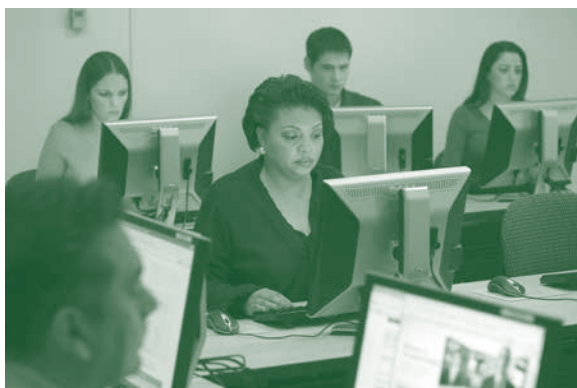
Staff may be employed by more than one institution. They are included at each institution by which they are employed.

**Source:**

Maryland Higher Education Commission, Employee Data System, 2016



Native Hawaiian or Pacific Islander	Asian	White	Two or More Races	Foreign/ Non-Resident		Gender	
				Alien	Unknown	Male	Female
0	0	186	0	0	1	66	123
1	14	485	0	0	3	217	396
2	5	56	0	3	0	107	177
0	2	168	3	0	0	58	125
0	0	106	0	0	1	35	84
0	1	128	1	1	1	48	115
0	6	245	5	0	0	120	246
0	15	570	15	8	5	303	572
0	6	218	0	0	5	97	181
0	1	95	0	0	0	46	52
0	2	189	1	0	2	81	129
0	4	209	4	0	0	77	170
1	34	259	5	21	1	133	302
1	106	567	8	187	1	583	765
0	17	86	16	12	22	196	290
1	2	131	4	0	0	51	111
6	215	3,698	62	232	42	2,218	3,838
0	8	35	3	10	32	141	231
0	12	31	1	2	0	143	182
0	3	472	1	0	0	226	267
0	4	482	7	2	0	268	364
1	36	1,020	11	0	30	638	742
0	16	225	10	7	14	172	265
1	97	856	15	10	0	653	1,071
5	46	892	11	6	0	500	763
8	406	2,668	70	63	466	2,436	3,038
0	8	104	5	3	4	248	277
5	83	532	42	36	237	479	906
1	16	40	15	42	98	431	539
0	5	180	0	0	0	105	130
21	740	7,537	191	181	881	6,440	8,775
<b>27</b>	<b>955</b>	<b>11,235</b>	<b>253</b>	<b>413</b>	<b>923</b>	<b>8,658</b>	<b>12,613</b>



# revenues & expenditures

## COMMUNITY COLLEGES: UNRESTRICTED REVENUES, FY 2017

Institution	State		Local	
Allegany College of Maryland	\$6,026,344	21.7%	\$7,630,550	27.5%
Anne Arundel Community College	29,094,016	26.6%	41,142,392	37.6%
Baltimore City Community College	40,064,442	73.6%	598,494	1.1%
Carroll Community College	8,020,376	26.1%	10,019,006	32.7%
Cecil College	5,652,417	22.9%	10,003,380	40.6%
Chesapeake College	6,550,309	31.3%	6,491,197	31.1%
College of Southern Maryland	13,805,709	22.7%	18,579,957	30.5%
Community College of Baltimore County	40,413,996	24.6%	44,329,042	26.9%
Frederick Community College	9,643,621	21.5%	15,806,893	35.3%
Garrett College	3,941,846	31.2%	4,673,000	37.0%
Hagerstown Community College	8,995,300	26.4%	9,543,050	28.0%
Harford Community College	11,475,320	23.1%	15,561,612	31.4%
Howard Community College	17,571,429	19.2%	32,712,416	35.7%
Montgomery College	42,264,375	15.7%	136,004,459	50.7%
Prince George's Community College	28,500,296	26.9%	34,872,800	33.0%
Wor-Wic Community College	7,755,212	32.3%	6,702,049	27.9%
<b>TOTAL</b>	<b>\$279,775,008</b>	<b>24.9%</b>	<b>\$394,670,297</b>	<b>35.1%</b>

**Note:**

Data excludes revenue from auxiliary enterprises.

Other includes State and local grants and contracts, private gifts, sale of educational activities, other sources, and transfers to and from the fund balance.

**Source:**

Maryland Higher Education Commission, CC-4 Financial Reports

## COMMUNITY COLLEGES: UNRESTRICTED EXPENDITURES, FY 2017

Institution	Instruction		Public Service		Academic Support	
Allegany College of Maryland	\$9,970,467	37.1%	\$6,277	0.0%	\$5,290,921	19.7%
Anne Arundel Community College	56,643,738	50.3%	-	0.0%	16,552,537	14.7%
Baltimore City Community College	23,714,361	43.2%	-	0.0%	5,222,826	9.5%
Carroll Community College	14,000,376	45.8%	-	0.0%	3,873,900	12.7%
Cecil College	9,836,577	41.4%	-	0.0%	2,264,567	9.5%
Chesapeake College	9,578,045	47.5%	135,031	0.7%	1,807,904	9.0%
College of Southern Maryland	25,113,047	42.9%	160,616	0.3%	5,425,350	9.3%
Community College of Baltimore County	82,594,763	51.0%	362,869	0.2%	12,567,680	7.8%
Frederick Community College	20,898,807	49.3%	-	0.0%	1,008,453	2.4%
Garrett College	3,802,032	33.8%	-	0.0%	946,003	8.4%
Hagerstown Community College	12,366,122	42.6%	-	0.0%	2,684,526	9.2%
Harford Community College	17,503,073	40.2%	-	0.0%	6,016,734	13.8%
Howard Community College	43,808,316	50.4%	720,049	0.8%	5,297,342	6.1%
Montgomery College	92,707,257	34.1%	-	0.0%	48,092,359	17.7%
Prince George's Community College	32,926,538	34.0%	189,620	0.2%	18,772,692	19.4%
Wor-Wic Community College	8,954,894	37.5%	-	0.0%	4,508,402	18.9%
<b>TOTAL</b>	<b>\$464,418,413</b>	<b>42.4%</b>	<b>\$1,574,462</b>	<b>0.1%</b>	<b>\$140,332,196</b>	<b>12.8%</b>

**Note:**

Data excludes auxiliary enterprises and mandatory and other transfers.

**Source:**

Maryland Higher Education Commission, CC-4 Financial Reports

Tuition and Fees		Other		Total	FTE Enrollment
\$13,279,449	47.9%	\$791,536	2.9%	\$27,727,879	2,403
38,521,178	35.2%	523,038	0.5%	109,280,624	11,514
10,755,740	19.7%	3,050,355	5.6%	54,469,031	4,979
12,393,079	40.4%	243,831	0.8%	30,676,292	2,724
8,778,261	35.6%	198,765	0.8%	24,632,823	2,130
6,926,078	33.1%	928,704	4.4%	20,896,288	1,950
27,866,879	45.7%	686,463	1.1%	60,939,008	5,532
78,183,848	47.5%	1,585,014	1.0%	164,511,900	16,705
17,728,485	39.6%	1,588,956	3.5%	44,767,955	4,319
3,816,255	30.2%	199,843	1.6%	12,630,944	824
15,050,409	44.2%	443,270	1.3%	34,032,029	3,475
21,705,048	43.8%	839,519	1.7%	49,581,499	4,882
39,305,380	42.9%	1,986,407	2.2%	91,575,632	8,038
87,726,834	32.7%	2,365,737	0.9%	268,361,405	19,740
40,627,396	38.4%	1,793,954	1.7%	105,794,446	12,263
8,911,386	37.1%	649,065	2.7%	24,017,712	2,620
<b>\$431,575,705</b>	<b>38.4%</b>	<b>\$17,874,457</b>	<b>1.6%</b>	<b>\$1,123,895,467</b>	<b>104,101</b>

Student Services		Institutional Support		Operation & Maintenance		Scholarships & Fellowships		Total
\$2,234,209	8.3%	\$5,819,696	21.7%	\$2,748,900	10.2%	\$782,711	2.9%	\$26,853,181
10,488,522	9.3%	17,100,525	15.2%	11,728,937	10.4%	-	0.0%	112,514,259
6,142,133	11.2%	12,145,698	22.1%	7,696,202	14.0%	32,087	0.1%	54,953,307
2,817,172	9.2%	6,511,356	21.3%	3,345,754	11.0%	-	0.0%	30,548,558
2,979,903	12.5%	5,106,742	21.5%	3,174,161	13.3%	422,886	1.8%	23,784,836
1,878,918	9.3%	4,570,145	22.6%	2,125,578	10.5%	84,390	0.4%	20,180,011
5,948,191	10.2%	15,163,175	25.9%	6,443,898	11.0%	241,173	0.4%	58,495,450
15,877,382	9.8%	34,448,959	21.3%	14,926,328	9.2%	1,128,886	0.7%	161,906,867
6,459,888	15.2%	7,834,996	18.5%	5,991,906	14.1%	226,973	0.5%	42,421,023
1,874,097	16.7%	2,637,896	23.5%	1,801,859	16.0%	179,437	1.6%	11,241,324
3,553,705	12.2%	6,903,174	23.8%	3,535,165	12.2%	-	0.0%	29,042,692
5,077,252	11.7%	9,285,141	21.3%	4,433,619	10.2%	1,189,241	2.7%	43,505,060
9,400,345	10.8%	15,682,263	18.0%	9,767,087	11.2%	2,276,925	2.6%	86,952,327
33,282,313	12.3%	49,218,316	18.1%	42,901,679	15.8%	5,385,727	2.0%	271,587,651
8,266,618	8.5%	27,208,838	28.1%	8,879,623	9.2%	620,722	0.6%	96,864,651
1,785,059	7.5%	5,101,691	21.4%	3,334,612	14.0%	209,562	0.9%	23,894,220
<b>\$118,065,707</b>	<b>10.8%</b>	<b>\$224,738,611</b>	<b>20.5%</b>	<b>\$132,835,308</b>	<b>12.1%</b>	<b>\$12,780,720</b>	<b>1.1%</b>	<b>\$1,094,745,417</b>

## PUBLIC FOUR-YEAR COLLEGES AND UNIVERSITIES: UNRESTRICTED REVENUES, FY 2017

Institution	State		Federal	
Bowie State University	\$44,830,324	54.2%	\$280,698	0.3%
Coppin State University	47,320,155	78.2%	117,537	0.2%
Frostburg State University	41,511,156	50.3%	-	0.0%
Salisbury University	51,471,135	40.2%	-	0.0%
Towson University	117,803,166	37.5%	634,023	0.2%
University of Baltimore	37,316,658	35.7%	212,220	0.2%
University of Maryland, Baltimore	225,153,551	37.8%	52,562,011	8.8%
University of Maryland, Baltimore County	118,331,397	45.2%	7,981,905	3.0%
University of Maryland, College Park	508,600,165	39.0%	68,976,596	5.3%
University of Maryland Eastern Shore	42,026,679	53.9%	1,086,442	1.4%
University of Maryland University College	41,835,303	11.4%	-	0.0%
Morgan State University	93,203,381	57.3%	3,354,906	2.1%
St. Mary's College of Maryland	25,159,549	53.7%	354	0.0%
<b>TOTAL</b>	<b>\$1,394,562,619</b>	<b>38.9%</b>	<b>\$135,206,692</b>	<b>3.8%</b>

**Notes:**

Other includes State and local grants and contracts, private gifts, grants and contracts, sale of educational activities, other sources and transfers to and from fund balance.

University of Maryland University College figures include overseas tuition revenues and FTEs.

**Source:**

Governor's FY 2019 Budget Book and institutional budget requests

## PUBLIC FOUR-YEAR COLLEGES AND UNIVERSITIES: UNRESTRICTED EXPENDITURES, FY 2017

Institution	Instruction		Research		Public Service	
Bowie State University	\$31,950,646	38.5%	-	0.0%	\$14,350	0.0%
Coppin State University	18,083,597	29.5%	-	0.0%	-	0.0%
Frostburg State University	33,338,272	39.5%	89,120	0.1%	304,565	0.4%
Salisbury University	59,391,206	45.2%	725,836	0.6%	2,862,489	2.2%
Towson University	124,821,737	39.5%	1,053,012	0.3%	3,841,893	1.2%
University of Baltimore	37,574,105	36.0%	608,264	0.6%	-	0.0%
University of Maryland, Baltimore	204,261,820	37.6%	93,546,286	17.2%	4,030,532	0.7%
University of Maryland, Baltimore County	114,939,147	41.8%	18,732,168	6.8%	3,615,430	1.3%
University of Maryland, College Park	519,624,614	40.1%	131,199,890	10.1%	37,913,576	2.9%
University of Maryland Eastern Shore	30,258,735	38.6%	2,383,994	3.0%	-	0.0%
University of Maryland University College	113,517,916	31.1%	-	0.0%	16,056,196	4.4%
Morgan State University	56,135,187	34.2%	1,115,509	0.7%	372,112	0.2%
St. Mary's College of Maryland	19,855,903	37.6%	32	0.0%	99,721	0.2%
<b>TOTAL</b>	<b>\$1,363,752,885</b>	<b>38.3%</b>	<b>\$249,454,111</b>	<b>7.0%</b>	<b>\$69,110,864</b>	<b>1.9%</b>

**Note:**

Data excludes auxiliary and hospital expenditures.

**Source:**

Governor's FY 2019 Budget Book and institutional budget requests



Tuition and Fees		Other		Total	FTE Enrollment
\$38,935,027	47.1%	(\$1,363,550)	-1.6%	\$82,682,499	4,684
15,397,688	25.4%	(2,292,856)	-3.8%	60,542,524	2,365
38,624,009	46.8%	2,326,077	2.8%	82,461,242	4,584
76,543,618	59.7%	133,320	0.1%	128,148,073	7,919
185,031,044	59.0%	10,255,995	3.3%	313,724,228	18,568
64,319,423	61.6%	2,630,775	2.5%	104,479,076	3,980
132,597,469	22.2%	185,732,523	31.2%	596,045,554	6,707
128,463,368	49.1%	6,945,366	2.7%	261,722,036	11,092
593,577,309	45.5%	132,621,403	10.2%	1,303,775,473	33,108
30,401,308	39.0%	4,458,936	5.7%	77,973,365	3,651
328,790,388	90.0%	(5,234,849)	-1.4%	365,390,842	34,050
65,108,565	40.1%	879,043	0.5%	162,545,895	6,694
23,679,810	50.5%	(1,953,556)	-4.2%	46,886,157	1,700
<b>\$1,721,469,026</b>	<b>48.0%</b>	<b>\$335,138,627</b>	<b>9.3%</b>	<b>\$3,586,376,964</b>	<b>139,084</b>

Academic Support	Student Services	Institutional Support	Operation & Maintenance	Scholarships & Fellowships	Total
\$8,501,742 10.2%	\$6,712,077 8.1%	\$15,158,350 18.3%	\$14,916,477 18.0%	\$5,803,897 7.0%	\$83,057,539
7,443,050 12.1%	4,337,437 7.1%	15,941,024 26.0%	12,552,814 20.5%	2,922,231 4.8%	61,280,153
10,755,140 12.8%	5,328,968 6.3%	12,696,909 15.1%	14,114,842 16.7%	7,700,433 9.1%	84,328,249
12,284,547 9.3%	7,488,971 5.7%	18,137,220 13.8%	21,197,976 16.1%	9,400,000 7.1%	131,488,245
38,059,201 12.0%	19,780,593 6.3%	41,241,294 13.1%	53,209,153 16.8%	33,941,662 10.7%	315,948,545
12,802,049 12.2%	10,222,968 9.8%	20,171,033 19.3%	13,653,940 13.1%	9,481,443 9.1%	104,513,802
63,061,860 11.6%	4,367,479 0.8%	86,203,420 15.9%	73,810,712 13.6%	13,991,657 2.6%	543,273,766
22,597,083 8.2%	18,718,222 6.8%	38,975,004 14.2%	34,485,233 12.5%	23,221,439 8.4%	275,283,726
181,334,392 14.0%	57,229,913 4.4%	132,156,854 10.2%	167,861,889 12.9%	69,153,663 5.3%	1,296,474,791
8,365,945 10.7%	3,021,289 3.9%	13,560,326 17.3%	14,653,450 18.7%	6,169,291 7.9%	78,413,030
78,505,721 21.5%	77,947,036 21.3%	51,371,645 14.1%	13,308,576 3.6%	14,580,394 4.0%	365,287,484
21,636,174 13.2%	7,345,958 4.5%	40,556,371 24.7%	19,065,978 11.6%	17,933,924 10.9%	164,161,213
2,607,756 4.9%	6,336,711 12.0%	13,297,259 25.2%	4,661,637 8.8%	5,930,527 11.2%	52,789,546
<b>\$467,954,660 13.2%</b>	<b>\$228,837,622 6.4%</b>	<b>\$499,466,709 14.0%</b>	<b>\$457,492,677 12.9%</b>	<b>\$220,230,561 6.2%</b>	<b>\$3,556,300,089</b>



## AID TO INDEPENDENT INSTITUTIONS, FY 2017

Institution	State Aid Amount
Capitol Technology University	\$532,965
Goucher College	1,890,858
Hood College	1,726,825
Johns Hopkins University	21,530,502
Loyola College of Maryland	5,555,109
Maryland Institute College of Art	2,375,213
McDaniel College	2,454,313
Mount St. Mary's University	2,082,082
Notre Dame of Maryland University	1,574,986
St. John's College	593,791
Stevenson University	4,053,449
Washington Adventist University	825,638
Washington College	1,621,603
<b>TOTAL</b>	<b>\$46,817,334</b>

**Source:**

Maryland Higher Education Commission, Joseph A. Sellinger Program

## TOTAL STATE CAPITAL BUDGET AUTHORIZATIONS BY CAMPUS, FY 2014 - 2018

Institution	FY 2014	FY 2015
<b>FOUR-YEAR PUBLIC INSTITUTIONS</b>		
Bowie State University	\$6,000,000	\$23,842,000
Coppin State University	56,198,000	10,300,000
Frostburg State University	9,843,000	400,000
Salisbury University	7,472,000	45,000,000
Towson University	11,512,000	1,500,000
University of Baltimore	1,000,000	2,775,000
University of Maryland, Baltimore	16,570,000	49,000,000
University of Maryland, Baltimore County	38,068,000	14,106,000
University of Maryland, College Park	30,705,000	27,446,000
University of Maryland Eastern Shore	22,695,000	60,755,000
University of Maryland University College	-	-
Morgan State University	54,661,000	16,170,000
St. Mary's College of Maryland	4,580,000	17,850,000
<b>Subtotal</b>	<b>259,304,000</b>	<b>269,144,000</b>
<b>RELATED ENTITIES</b>		
University of Maryland Center for Environmental Science	2,350,000	10,604,000
University System of Maryland Office	23,500,000	5,300,000
<b>Subtotal</b>	<b>25,850,000</b>	<b>15,904,000</b>
<b>COMMUNITY COLLEGES</b>		
Baltimore City Community College	-	-
Community Colleges	52,035,000	65,405,000
<b>Subtotal</b>	<b>52,035,000</b>	<b>65,405,000</b>
<b>INDEPENDENT INSTITUTIONS</b>		
<b>TOTAL</b>	<b>\$359,689,000</b>	<b>\$374,453,000</b>

**Note:**

In FY 2014, FY 2015, FY 2016, and FY 2017, the University System of Maryland Office, through a joint agreement with the Southern Maryland Navy Alliance and the Figures reflect original authorization amounts. Subsequent budgets may reflect adjusted authorizations. Revenue bonds were excluded from the analyses.

**Source:**

Maryland Department of Budget and Management, Office of Capital Budgeting, Capital Improvements Authorized with General Obligation Bonds by the General Assembly, FY 2014-2018



FY 2016	FY 2017	FY 2018	Total
\$39,728,000	\$31,501,000	\$-	\$101,071,000
-	-	1,336,000	67,834,000
5,105,000	2,500,000	1,000,000	18,848,000
40,680,000	425,000	-	93,577,000
-	6,150,000	26,300,000	45,462,000
-	9,300,000	3,750,000	16,825,000
81,550,000	85,000,000	6,490,000	238,610,000
6,000,000	7,640,000	40,249,000	106,063,000
83,667,000	97,555,000	100,872,000	340,245,000
6,498,000	3,500,000	3,048,000	96,496,000
-	-	-	0
35,620,000	40,400,000	10,360,000	157,211,000
10,482,000	2,700,000	9,832,000	45,444,000
309,330,000	286,671,000	203,237,000	1,327,686,000
4,531,000	-	-	17,485,000
5,166,000	39,761,000	88,651,000	162,378,000
9,697,000	39,761,000	88,651,000	179,863,000
-	248,000	-	248,000
54,926,000	59,386,000	57,552,000	289,304,000
54,926,000	59,634,000	57,552,000	289,552,000
9,600,000	9,600,000	9,700,000	75,400,000
<b>\$383,553,000</b>	<b>\$395,666,000</b>	<b>\$359,140,000</b>	<b>\$1,872,501,000</b>

Southern Maryland Higher Education Center, received a total of \$6,011,000 to continue design of the third Classroom/Research Building at the California, MD site.

# tuition & fees

## COMMUNITY COLLEGE TUITION AND FEES FOR FULL-TIME STUDENTS (PER CREDIT HOUR), FY 2014 - 2018

### MARYLAND RESIDENTS, COUNTY RESIDENTS

Institution	FY 2014	FY 2015	FY 2016	FY 2017	FY 2018	1-Year Change	5-Year Change
Allegany College of Maryland	\$115	\$118	\$128	\$128	\$131	2.5%	13.9%
Anne Arundel Community College	125	128	131	134	137	2.2%	9.3%
Baltimore City Community College	104	101	110	135	133	-1.2%	28.0%
Carroll Community College	138	144	151	160	163	1.5%	18.0%
Cecil College	103	108	113	120	122	1.7%	18.4%
Chesapeake College	137	144	151	157	159	1.3%	15.8%
College of Southern Maryland	139	141	148	151	154	1.6%	10.6%
Community College of Baltimore County	136	142	142	148	154	4.2%	13.2%
Frederick Community College	134	132	139	142	146	3.0%	9.1%
Garrett College	120	120	130	135	141	4.4%	17.5%
Hagerstown Community College	120	123	131	131	133	1.5%	10.8%
Harford Community College	108	125	139	139	151	8.7%	40.1%
Howard Community College	146	148	154	156	162	3.3%	10.7%
Montgomery College	148	153	158	163	166	1.5%	12.0%
Prince George's Community College	145	145	152	152	157	3.3%	8.0%
Wor-Wic Community College	108	112	120	123	125	1.6%	15.7%
<b>AVERAGE</b>	<b>\$127</b>	<b>\$130</b>	<b>\$137</b>	<b>\$142</b>	<b>\$146</b>	<b>2.6%</b>	<b>15.1%</b>

#### Source:

Maryland Association of Community Colleges

## COMMUNITY COLLEGE TUITION AND FEES FOR FULL-TIME STUDENTS (PER CREDIT HOUR), FY 2014 - 2018

### OUT OF SERVICE AREA

Institution	FY 2014	FY 2015	FY 2016	FY 2017	FY 2018	1-Year Change	5-Year Change
Allegany College of Maryland	\$208	\$214	\$228	\$239	\$241	0.9%	15.9%
Anne Arundel Community College	216	222	228	234	239	2.3%	10.6%
Baltimore City Community College	104	101	110	135	133	-1.3%	27.9%
Carroll Community College	200	208	219	262	236	-9.8%	18.0%
Cecil College	193	198	203	232	216	-7.1%	11.9%
Chesapeake College	206	213	220	210	228	8.6%	10.7%
College of Southern Maryland	240	244	255	226	267	18.3%	11.3%
Community College of Baltimore County	245	255	255	262	270	3.1%	10.2%
Frederick Community College	266	264	275	282	288	2.2%	8.3%
Garrett College	242	242	252	257	266	3.5%	9.9%
Hagerstown Community College	181	185	197	197	197	0.0%	8.8%
Harford Community College	195	212	226	226	241	6.5%	23.6%
Howard Community College	229	231	237	239	245	2.5%	7.0%
Montgomery College	289	297	305	316	321	1.6%	11.1%
Prince George's Community College	230	230	240	240	252	5.1%	9.6%
Wor-Wic Community College	227	236	248	254	258	1.6%	13.7%
<b>AVERAGE</b>	<b>\$217</b>	<b>\$222</b>	<b>\$231</b>	<b>\$238</b>	<b>\$244</b>	<b>2.3%</b>	<b>12.3%</b>

#### Source:

Maryland Association of Community Colleges



## COMMUNITY COLLEGE TUITION AND FEES FOR FULL-TIME STUDENTS (PER CREDIT HOUR), FY 2014 - 2018

### OUT OF STATE RESIDENTS

Institution	FY 2014	FY 2015	FY 2016	FY 2017	FY 2018	1-Year Change	5-Year Change
Allegany College of Maryland	\$248	\$255	\$271	\$284	\$287	1.1%	15.7%
Anne Arundel Community College	363	373	383	393	401	2.1%	10.5%
Baltimore City Community College	226	238	255	309	303	-1.8%	34.1%
Carroll Community College	279	291	306	325	330	1.6%	18.3%
Cecil College	238	243	248	255	264	3.5%	10.9%
Chesapeake College	283	290	297	303	305	0.8%	7.8%
College of Southern Maryland	310	315	330	338	344	1.7%	11.0%
Community College of Baltimore County	359	373	373	387	397	2.7%	10.6%
Frederick Community College	352	350	365	374	381	1.9%	8.2%
Garrett College	281	281	292	297	306	3.0%	8.9%
Hagerstown Community College	233	239	255	255	260	2.0%	11.6%
Harford Community College	282	299	313	313	329	5.1%	16.8%
Howard Community College	274	276	282	284	290	1.8%	5.7%
Montgomery College	391	403	496	430	437	1.7%	11.8%
Prince George's Community College	325	325	337	337	354	5.0%	8.8%
Wor-Wic Community College	277	288	301	309	314	1.6%	13.4%
<b>AVERAGE</b>	<b>\$295</b>	<b>\$302</b>	<b>\$319</b>	<b>\$324</b>	<b>\$331</b>	<b>2.0%</b>	<b>12.2%</b>

**Note:**

In FY 2016, the Maryland Community College Research Group adopted a standard reporting method for all institutions. Data since FY 2016 are based on dividing what a full-time student taking 30 credits in an academic year would pay on a "per credit" basis. Tuition and fee charges at some institutions may vary based upon a student's enrollment, so the actual "per-credit" tuition and fees for an individual student may vary slightly from these institutional data. Prior to FY 2016, institutions utilized different methods of incorporating fees into reporting of their tuition and fee data.

**Source:**

Maryland Association of Community Colleges

## PUBLIC FOUR-YEAR UNDERGRADUATE TUITION AND FEES, FY 2014 - 2018

Institution	FY 2014	FY 2015	FY 2016	FY 2017	FY 2018	1-Year Change	5-Year Change
<b>RESIDENTS</b>							
Bowie State University	\$6,971	\$7,299	\$7,658	\$7,880	\$8,065	2.3%	15.7%
Coppin State University	5,882	6,132	6,362	6,448	6,536	1.4%	11.1%
Frostburg State University	7,728	8,098	8,488	8,702	8,914	2.4%	15.3%
Salisbury University	8,128	8,684	9,086	9,364	9,582	2.3%	17.9%
Towson University	8,342	8,710	9,182	9,408	9,694	3.0%	16.2%
University of Baltimore	7,838	8,018	8,326	8,596	8,824	2.7%	12.6%
University of Maryland, Baltimore	8,251	8,446	8,846	9,081	9,224	1.6%	11.8%
University of Maryland, Baltimore County	10,068	10,384	11,006	11,264	11,518	2.3%	14.4%
University of Maryland, College Park	9,161	9,579	9,996	10,181	10,416	2.3%	13.7%
University of Maryland Eastern Shore	6,998	7,287	7,625	7,804	8,042	3.0%	14.9%
University of Maryland University College	6,567	6,759	7,056	7,176	7,296	1.7%	11.1%
Morgan State University	7,218	7,378	7,508	7,636	7,767	1.7%	7.6%
St. Mary's College of Maryland	14,864	13,824	13,895	14,192	14,496	2.1%	-2.5%
<b>AVERAGE</b>	<b>\$8,309</b>	<b>\$8,508</b>	<b>\$8,849</b>	<b>\$9,056</b>	<b>\$9,260</b>	<b>2.2%</b>	<b>10.3%</b>
<b>NON-RESIDENTS</b>							
Bowie State University	\$17,538	\$17,875	\$18,141	\$18,416	\$18,653	1.3%	6.4%
Coppin State University	10,816	11,393	11,886	12,178	12,684	4.2%	17.3%
Frostburg State University	18,376	19,616	20,588	21,226	22,262	4.9%	21.1%
Salisbury University	16,474	17,030	17,432	17,776	18,622	4.8%	13.0%
Towson University	20,020	20,268	20,788	21,076	22,140	5.0%	10.6%
University of Baltimore	18,396	18,892	19,744	20,242	20,704	2.3%	12.5%
University of Maryland, Baltimore	26,537	26,691	27,768	29,158	31,096	6.6%	17.2%
University of Maryland, Baltimore County	21,642	22,682	23,770	24,492	25,654	4.7%	18.5%
University of Maryland, College Park	28,347	29,720	31,144	32,045	33,623	4.9%	18.6%
University of Maryland Eastern Shore	15,504	16,311	16,687	17,188	18,048	5.0%	16.4%
University of Maryland University College	12,336	12,336	12,336	12,336	12,336	0.0%	0.0%
Morgan State University	16,632	16,862	17,182	17,504	17,833	1.9%	7.2%
St. Mary's College of Maryland	28,573	28,674	28,745	29,340	29,948	2.1%	4.8%
<b>AVERAGE</b>	<b>\$19,322</b>	<b>\$19,873</b>	<b>\$20,478</b>	<b>\$20,998</b>	<b>\$21,816</b>	<b>3.7%</b>	<b>11.4%</b>

**Notes:**

Undergraduate tuition and fees are based on full-time attendance.

UMB average reflects the unweighted average of undergraduate programs.

**Source:**

Institutional tuition and fee schedules

## PUBLIC FOUR-YEAR GRADUATE TUITION PER CREDIT HOUR, FY 2014 - 2018

Institution	FY 2014	FY 2015	FY 2016	FY 2017	FY 2018	1-Year Change	5-Year Change
<b>RESIDENTS</b>							
Bowie State University	\$361	\$372	\$391	\$399	\$407	2.0%	12.7%
Coppin State University	278	292	307	315	331	5.1%	19.1%
Frostburg State University	340	364	382	394	413	4.8%	21.5%
Salisbury University	342	358	370	381	392	2.9%	14.6%
Towson University	365	365	372	379	398	5.0%	9.0%
University of Maryland, Baltimore County	530	557	585	603	621	3.0%	17.2%
University of Maryland, College Park	573	602	632	651	683	4.9%	19.2%
University of Maryland Eastern Shore	287	301	307	313	319	1.9%	11.1%
University of Maryland University College	458	458	458	458	458	0.0%	0.0%
Morgan State University	360	371	382	393	412	4.8%	14.4%
St. Mary's College of Maryland	325	325	325	331	332	0.2%	2.2%
<b>AVERAGE</b>	<b>\$384</b>	<b>\$397</b>	<b>\$410</b>	<b>\$420</b>	<b>\$433</b>	<b>3.1%</b>	<b>11.5%</b>
<b>NON-RESIDENTS</b>							
Bowie State University	\$667	\$674	\$681	\$688	\$695	1.0%	4.2%
Coppin State University	511	536	563	580	609	5.0%	19.2%
Frostburg State University	437	468	491	506	531	4.9%	21.5%
Salisbury University	631	647	659	670	703	4.9%	11.4%
Towson University	751	755	770	785	824	5.0%	9.7%
University of Maryland, Baltimore County	878	922	968	997	1,047	5.0%	19.2%
University of Maryland, College Park	1,236	1,298	1,363	1,404	1,474	5.0%	19.3%
University of Maryland Eastern Shore	511	537	548	564	592	5.0%	15.9%
University of Maryland University College	659	659	659	659	659	0.0%	0.0%
Morgan State University	702	726	748	770	810	5.2%	15.4%
St. Mary's College of Maryland	325	325	325	331	332	0.2%	2.2%
<b>AVERAGE</b>	<b>\$664</b>	<b>\$686</b>	<b>\$707</b>	<b>\$723</b>	<b>\$752</b>	<b>4.0%</b>	<b>11.7%</b>

**Note:**

The University of Baltimore and University of Maryland, Baltimore are excluded due to widely varying tuition rates.

**Source:**

Institutional tuition and fee schedules



# financial aid

## CHARACTERISTICS OF UNDERGRADUATE FINANCIAL AID RECIPIENTS AT COMMUNITY COLLEGES, FY 2014 - FY 2016

	FY 2014	FY 2015	FY 2016
<b>FINANCIAL CHARACTERISTICS</b>			
Total Number of Aid Recipients	87,835	85,635	78,914
Total Aid Received	\$353.1 mil	\$344.2 mil	\$323.0 mil
Average Adjusted Gross Income	\$35,052	\$36,787	\$35,551
Average Aid Award	\$4,020	\$4,019	\$4,093
Average Need	\$14,522	\$13,523	\$14,446
% Who Received a Federal Pell Grant	66%	65%	63%
% Who Received a Loan	28%	27%	27%
Average Loan Amount	\$4,930	\$5,081	\$5,443
<b>DEMOGRAPHICS</b>			
Men	36%	36%	36%
Women	64%	64%	64%
African American	41%	40%	39%
Asian	5%	5%	6%
Hispanic	8%	9%	10%
White	40%	40%	40%
Other	6%	6%	6%
Dependent Student Status	38%	39%	42%
Independent Student Status	46%	45%	42%

**Source:**

Maryland Higher Education Commission, Financial Aid Information System

## CHARACTERISTICS OF UNDERGRADUATE FINANCIAL AID RECIPIENTS AT FOUR-YEAR PUBLIC INSTITUTIONS, FY 2014 - FY 2016

	FY 2014	FY 2015	FY 2016
<b>FINANCIAL CHARACTERISTICS</b>			
Total Number of Aid Recipients	93,886	97,240	96,750
Total Aid Received	\$1,040.0 mil	\$1,074.8 mil	\$1,106.5 mil
Average Adjusted Gross Income	\$67,675	\$68,390	\$69,780
Average Aid Award	\$11,075	\$11,053	\$11,437
Average Need	\$19,180	\$18,243	\$18,852
% Who Received a Federal Pell Grant	44%	46%	46%
% Who Received a Loan	64%	64%	63%
Average Loan Amount	\$9,491	\$9,573	\$10,036
<b>DEMOGRAPHICS</b>			
Men	45%	45%	45%
Women	55%	55%	55%
African American	35%	36%	36%
Asian	8%	8%	8%
Hispanic	7%	7%	7%
White	42%	41%	40%
Other	9%	9%	9%
Dependent Student Status	56%	56%	56%
Independent Student Status	35%	36%	35%

**Source:**

Maryland Higher Education Commission, Financial Aid Information System

## FINANCIAL AID AWARDED AT COMMUNITY COLLEGES, FY 2014 - FY 2016

	FY 2014		FY 2015		FY 2016	
	Total Aid (in millions)	Average Award	Total Aid (in millions)	Average Award	Total Aid (in millions)	Average Award
<b>Federal</b>						
Grants/Scholarships	\$182.68	\$3,061	\$177.16	\$3,072	\$157.68	\$3,135
Loans	117.68	4,887	113.08	5,043	113.30	5,403
Work Study	3.56	2,423	3.64	2,485	3.51	2,530
<b>State</b>						
Need-Based Aid (Grants/Scholarships)	14.83	965	13.81	1,014	12.50	1,029
Legislative Aid	1.70	942	1.67	927	1.55	929
Career Aid	0.04	1,222	0.04	1,047	0.03	1,096
Unique Populations	0.19	4,184	0.25	4,255	0.13	3,435
<b>Institutional</b>						
Grants	4.33	787	4.40	764	4.41	895
Scholarships	9.12	1,049	11.71	1,044	11.19	1,108
Work Study	0.93	2,468	0.27	2,162	0.12	2,185
Tuition Waivers	8.42	850	8.47	850	9.06	846
<b>Private</b>						
Grants/Scholarships	7.41	1,247	7.89	1,138	7.79	1,090
Loans	2.87	6,022	2.72	5,572	2.82	5,717

**Source:**

Maryland Higher Education Commission, Financial Aid Information System

## FINANCIAL AID AWARDED TO UNDERGRADUATES AT FOUR-YEAR PUBLIC INSTITUTIONS, FY 2014 - FY 2016

	FY 2014		FY 2015		FY 2016	
	Total Aid (in millions)	Average Award	Total Aid (in millions)	Average Award	Total Aid (in millions)	Average Award
<b>Federal</b>						
Grants/Scholarships	\$164.38	\$3,872	\$174.71	\$3,846	\$176.41	\$3,931
Loans	514.51	8,726	529.43	8,789	542.45	9,130
Work Study	4.52	1,905	4.31	1,858	4.21	1,912
<b>State</b>						
Need-Based Aid (Grants/Scholarships)	63.35	2,750	56.84	2,823	53.35	2,968
Legislative Aid	7.41	1,159	7.81	1,137	8.14	1,171
Career Aid	0.31	3,295	0.49	3,410	0.51	3,455
Merit Aid	1.18	2,933	0.62	2,881	0.00	0
Unique Populations	1.80	8,440	1.85	8,547	1.47	6,897
<b>Institutional</b>						
Grants	57.49	2,556	65.56	2,840	60.84	2,469
Scholarships	88.84	4,507	89.34	4,862	98.58	4,508
Work Study	3.40	4,394	2.87	4,701	3.14	4,803
Tuition Waivers	22.55	3,293	23.81	3,265	27.17	3,468
Loans	0.00	0	0.00	0	0.03	5,200
<b>Private</b>						
Grants/Scholarships	51.12	4,582	55.96	4,595	59.96	4,821
Loans	59.41	12,235	61.69	12,475	71.11	12,891

**Source:**

Maryland Higher Education Commission, Financial Aid Information System

## MARYLAND FINANCIAL AID PROGRAM EXPENDITURES, FY 2017

	Dollars Disbursed	Number of Awards	Average Award
Charles W. Riley Firefighter & Ambulance Rescue Squad Member Scholarship Program	\$92,243	34	\$2,713
Edward T. and Mary A. Conroy Memorial Scholarship Program and Jean B. Cryor Memorial Scholarship Program	1,626,758	218	7,462
Delegate Scholarship	6,148,599	9,363	657
Graduate and Professional Scholarship	1,168,030	520	2,246
Hal & Jo Cohen Graduate Nursing Faculty Scholarship	2,786,738	235	11,858
Howard P. Rawlings Campus-Based Educational Assistance Grant	1,912,250	1,059	1,806
Howard P. Rawlings Educational Assistance Grant	51,422,539	23,236	2,213
Howard P. Rawlings Guaranteed Access Grant	21,520,592	1,610	13,367
2+2 Transfer Scholarship Program	320,500	219	1,463
Janet L. Hoffman Loan Assistance Repayment Program	900,132	151	5,961
Loan Assistance Repayment Program - Dental Care	308,620	15	20,575
Loan Assistance Repayment Program - Physicians	1,716,338	93	18,455
Part-Time Grant	4,973,436	6,118	813
Senatorial Scholarship	6,613,562	8,037	823
Jack F. Tolbert Memorial Student Grant Program	182,000	364	500
Veterans of the Afghanistan and Iraq Conflicts Scholarship	686,340	130	5,280
Workforce Shortage Student Assistance Grant	911,500	285	3,198
<b>TOTAL</b>	<b>\$103,290,177</b>	<b>51,687</b>	<b>\$1,998</b>

**Notes:**

Figures reflect actual awards made to students in FY 2017. Prior year adjustments may be included in award amounts.

Graduate Nurse Faculty Scholarship & Living Expenses Grant Includes Living Expenses Grant funds, which were disbursed directly to recipients. Students can receive more than one award.

**Source:**

Maryland Higher Education Commission, Maryland College Aid Processing System, 2017



# private career schools

## ENROLLMENT BY SCHOOL, 2015 - 2016

School	# of Programs	Total Enrollment
<b>Allied Health</b>		
All-State Career	4	394
American Health Career Institute	3	110
American Red Cross Chesapeake Region	1	374
Aspire School of Learning	1	5
Baltimore Academy of Nursing Assistants	1	88
Bethel Healthcare Institute, Inc.	1	37
BioTechnical Institute of Maryland, Inc.	1	32
Cambridge Nursing Assistant Academy	1	213
Cambridge Nursing Assistant Academy - Gaithersburg	1	208
Care'Xpert Academy (CXA)	1	155
Caroline Center	2	188
Caroline Center West	1	39
Columbia Nursing Assistant Academy	1	13
Compassionate Nursing Assistant Academy	1	54
Cortiva Institute	1	343
DATS of Maryland at Annapolis	1	29
DATS of Maryland at Columbia	1	36
DATS of Maryland at Germantown	1	33
DATS of Maryland at Westminster	1	39
Demas Academy	1	56
Dominion Academy	1	42
Fomen Nursing Assistant Training Academy	1	118
Fomen Nursing Assistant Training Academy - Glen Burnie	1	35
Fortis Institute	4	417
Fortis Institute - Towson	4	672
Gandhi Health Career Services	3	138
GBMC School of Radiography	1	21
Goldenstar Education Center, Inc.	1	31
Health Focus, Inc.	1	153
Healthcare Training Solutions, LLC	1	91
Institute of Health Sciences	1	202
IT Works Learning Center - Fayette	1	162
IT Works Learning Center - Manor Care	1	93
Johns Hopkins Hospital School of Cardiac Sonography	1	7
Johns Hopkins Hospital Schools of Medical Imaging (The)	3	85
Kahak Health Care Academy	1	43
Knowledge First Institute	1	126
Maryland Center for Adult Training, Inc.	1	45
Maryland Dental Assistant School	2	14
MISS Health Care Training Institute	1	10
Morning Star Academy	1	161
National Phlebotomy Association	1	1
NurseOne, Inc.	1	37
Nursing Assistant Academy (The)	1	78
Perpetual School of Nursing Assistant	1	110
Precise Academy	1	25
Premier Healthcare Institute	1	18
Quality First Career Center, Inc.	3	157
Stein Academy - School of Health, Technology & Career Development	6	357
Top Knowledge Healthcare Institute	1	101
Trinity Nursing Academy, Inc.	1	31
Vision Allied Health Institute	1	122
<b>Sub-Total</b>	<b>76</b>	<b>6,149</b>

## ENROLLMENT BY SCHOOL, 2015 - 2016 (continued)

School	# of Programs	Total Enrollment
<b>Audio-Video/Radio/TV</b>		
Omega Studios' School of Applied Recording Arts and Sciences (The)	8	165
Sheffield Institute for the Recording Arts (The)	4	153
<b>Sub-Total</b>	12	318
<b>Barbering/Cosmetology</b>		
Aaron's Academy of Beauty	2	42
Academy of Professional Barber/Stylists	1	77
Aesthetics Institute of Cosmetology	4	94
Aspen Beauty Academy - Laurel	1	86
Aspen Beauty Academy - Silver Spring	1	52
Avara's Academy of Hair Design	1	81
Aveda Institute Maryland	1	80
Award Beauty School	3	388
Baltimore Studio of Hair Design	1	78
BEAT - Beauty Expert Artistry Training	1	33
Bladensburg Barber School	1	83
Blades School of Hair Design	1	131
Chesapeake School of Esthetics	2	29
Cortiva Institute	1	185
Del-Mar-Va Beauty Academy	1	79
Empire Beauty School	1	172
Empire Beauty School - Glen Burnie	1	195
Fortis Institute	2	102
Frederick School of Cosmetology	1	27
Hair Academy	2	702
Hair Academy II, Inc.	1	275
Hair Expressions Academy - Paul Mitchell the School - Jessup	1	249
Hair Expressions - Paul Mitchell Partner School	2	152
Maryland Beauty Academy	1	26
Maryland Beauty Academy - Essex	2	114
Maryland Beauty Academy - Westminster	2	51
Montgomery Beauty School	2	210
Robert Paul Academy of Cosmetology Arts & Sciences	2	139
The Academy of Makeup	1	27
THE TEMPLE Annapolis: A Paul Mitchell Partner School	1	136
THE TEMPLE: A Paul Mitchell Partner School	1	116
Von Lee International School of Aesthetics	2	211
<b>Sub-Total</b>	47	4,422
<b>Bartending</b>		
Authentic Bartending School of Maryland	1	52
Maryland Bartending Academy	1	594
Maryland Bartending School	1	0
<b>Sub-Total</b>	3	646
<b>Computer</b>		
Computer Institute	1	2
<b>Sub-Total</b>	1	2
<b>Massage</b>		
Central Maryland School of Massage	1	168
Columbia Institute	1	29
Fortis Institute - Towson	1	32
Holistic Massage Training Institute	1	51
Potomac Massage Training Institute	1	94
<b>Sub-Total</b>	5	374

## ENROLLMENT BY SCHOOL, 2015 - 2016 (continued)

School	# of Programs	Total Enrollment
<b>Montessori</b>		
Institute for Advanced Montessori Studies	4	117
Maryland Center for Montessori Studies	1	14
Montgomery Montessori Institute	2	25
<b>Sub-Total</b>	7	156
<b>Real Estate</b>		
Academy of Real Estate	1	93
Career Academy of Real Estate	2	145
Champion Institute of Real Estate	2	279
Coldwell Banker Residential Brokerage School of Real Estate	2	1,530
Deep Creek School of Real Estate	1	1
Diana School of Real Estate	1	9
Dias Real Estate Academy	1	115
Don Gurney Academy of Real Estate	1	27
Ed Smith Real Estate School	1	86
Elite Learning Academy	1	55
Frederick Academy of Real Estate	1	265
GBBR® School of Real Estate (The)	1	172
Kirks Institute for Advanced Real Estate Studies	1	16
Lawyers Advantage Career School	1	10
Long & Foster Institute of Real Estate	1	3,039
Maryland Real Estate Academy	1	25
New Millennium Real Estate School	1	176
O'Brien Institute of Real Estate	1	61
Professional Development Institute (The)	2	370
Real Estate Education Center of MD	2	263
Real Estate Empower	1	32
Real Estate Institute (The)	1	8
Southern Maryland Association of REALTORS Real Estate Academy	1	37
Tristar Academy Inc.	1	56
Weichert Real Estate School	1	880
<b>Sub-Total</b>	30	7,750
<b>Truck Driving/Mechanics</b>		
All-State Career	4	740
North American Trade Schools	9	950
Pittsburgh Institute of Aeronautics	1	148
Southern MD Tri-County Community Action Committee, Inc.	1	26
<b>Sub-Total</b>	15	1,864
<b>Other</b>		
Accounting and Bookkeeping Center, Inc. (The)	2	12
Drycleaning and Laundry Institute	1	32
Fortis Institute	1	356
L'Academie de Cuisine - Gaithersburg	2	187
Maritime Institute of Technology & Graduate Studies (MITAGS)	3	29
Maryland Institute of Criminal Justice	1	26
Maryland School of Travel	1	0
<b>Sub-Total</b>	11	642
<b>TOTAL</b>	<b>207</b>	<b>22,323</b>

**Note:**

Represents all enrollments for all programs July 1, 2015 through June 30, 2016.

**Source:**

Maryland Higher Education Commission, Private Career School Annual Reports, 2016



## NUMBER, ENROLLMENT, COMPLETION AND EMPLOYMENT RATE BY SCHOOL TYPE: 2015 - 2016

School Type	# Of Schools	# Of Programs	Enrollment	Completion Rate	Employment Rate
Allied Health	49	76	6,149	87.5%	67.4%
Audio-Video/Radio/TV	2	12	318	77.2%	62.1%
Barbering/Cosmetology	32	47	4,422	56.9%	70.3%
Bartending	3	3	646	89.2%	65.0%
Computer	1	1	2	100.0%	100.0%
Massage	5	5	374	81.2%	49.2%
Montessori	3	7	156	97.2%	82.9%
Real Estate	25	30	7,750	76.3%	56.7% pass rate
Truck Driving/Mechanical/ Construction Trade	4	15	1,864	75.2%	62.1%
Other	7	11	642	68.8%	59.0%
<b>Total</b>	<b>129</b>	<b>207</b>	<b>22,323</b>	<b>76.9%</b>	<b>66.1%</b>

**Notes:**

Represents students enrolled from July 1, 2015 through June 30, 2016.

Number of schools within each category identifies the total number of schools offering that type of program. The statewide total includes each school only once, regardless of the program categories.

Total percent employed statewide does not include first-time pass rates for Real Estate or licensed allied health.

Other includes cooking, dog grooming, dry cleaning, maritime studies, photography, polygraph, travel, and trade schools.

**Source:**

Maryland Higher Education Commission, Private Career Schools Annual Reports, 2016









**MHEC**

**Maryland Higher Education Commission**

6 North Liberty Street, 10<sup>th</sup> Floor

Baltimore, MD 21201

[www.mhec.maryland.gov](http://www.mhec.maryland.gov)

410.767.3300

800.974.0203

TTY: 800.735.2258