



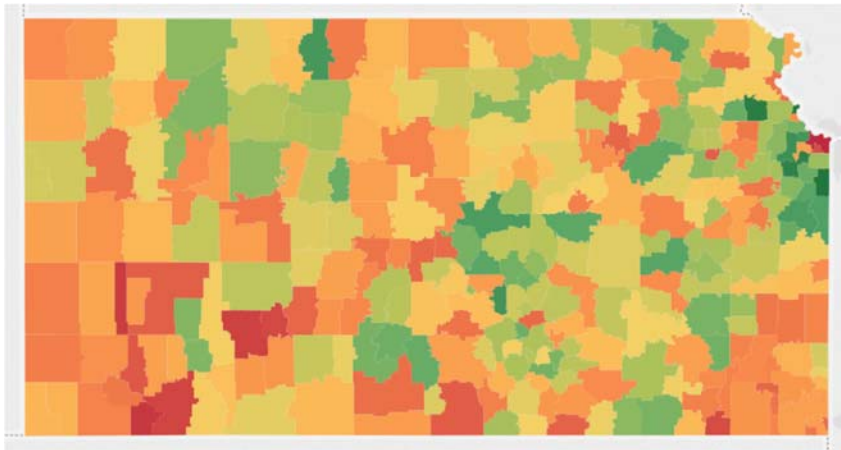
KANSAS ASSOCIATION OF SCHOOL BOARDS

Serving Educational Leaders, Inspiring Student Success

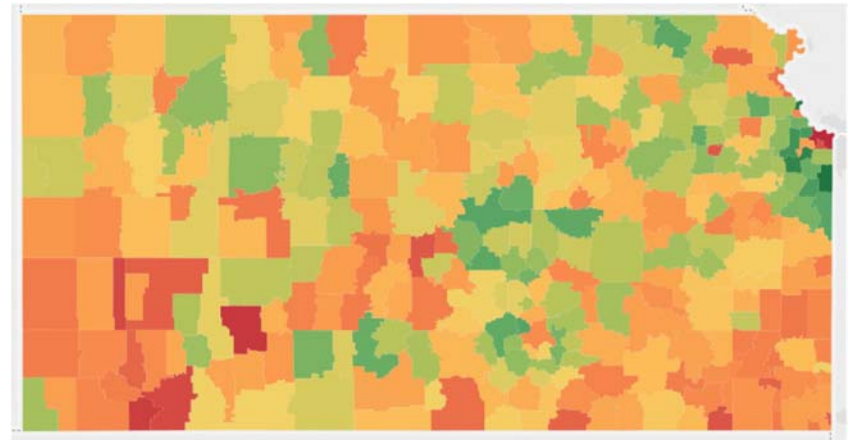


2016-17 KASB Enrollment Projection Report

Ted Carter, Research Specialist - February, 2017



2016-17



2021-22

Percent of Students Eligible for Free or Reduced-Price Lunch
(Green = Lower Percent, Red = Higher Percent)

Introduction

This report presents the findings from KASB's 2016-17 Enrollment Projections for the state of Kansas as a whole, and also provides instructions on how these projections can be accessed at the district level.

Key Findings

- Total headcount enrollment will see modest increases from 2016-17 through 2018-19, then a slight decrease in 2019-20, virtually no change in 2020-21, then a modest decrease in 2021-22.
- The average annual change in total enrollment from 2016-17 to 2021-22 is expected to be a 0.13 percent increase.
- The five-year change from 2016-17 to 2021-22 is projected to be a 0.66 percent increase.
 - 160 districts, or 55.9 percent, are projected to see a decline in enrollment during this period, with all the growth happening in 125, or 43.7 percent of the districts.
 - Six districts are expected to see a decline of 20 percent or more.
 - Eleven districts are expected to see an increase of 20 percent or more.
 - The average district is expected to see a 0.41 percent increase during this time.
 - Grades K through 5 will all see decreases in students, while grades 6 through 12 will see increases.
 - The percent of students eligible for free or reduced-price lunch is not predicted to change substantially between 2016-17 and 2021-22.
 - Statewide average student age is likely to increase slightly, suggesting that a decline in enrollment might be on the horizon.
 - 122 districts, or 42.7 percent, are expected to see a decline in average student age.
 - 162 districts, or 56.6 percent, are expected to see an increase in the average student age.

Contents

Introduction 1

Key Findings 2

Methodology..... 4

 Initial Data 4

 Ratio of Birth to First Grade Enrollment 4

 Cohort Survival Rate..... 4

 Other Grade Levels..... 5

 Lunch Status 5

 Average Age 5

Total Students 6

 Table One: Student Headcounts 6

 Figure One: Student Headcounts by District Size 7

Grade Levels..... 8

 Table Two: Student Headcounts by Grade 8

 Figure Two: Student Headcounts by Grade 10

Lunch Status..... 11

 Table Three: School Lunch Percent..... 11

 Figure Three: School Lunch Status 12

Average Age 13

 Table Four: Average Age 13

 Figure Four: Average Age 14

Conclusions 15

Appendix A: District Totals..... 16

Appendix B: Running District-Level Projections..... 23

Methodology

The following describes the methods used for developing the Enrollment Projections contained in this report. This method is based on the one used by KASB for many years, but was enhanced and expanded as of the 2014-15 school year.

Initial Data

KASB acquires unaudited enrollment counts and the percent enrolled who qualify for free lunch, reduced-price lunch, and full-price lunch from the Kansas State Department of Education (KSDE) via their Comparative Performance & Fiscal System (<http://datacentral.ksde.org/cpfs.aspx>).

KASB acquires county-level birth data by month from the Kansas Department of Health and Environment via their Annual Summary of Vital Statistics (<http://www.kdheks.gov/hci/annsumm.html>).

Ratio of Birth to First Grade Enrollment

Total resident live births by county and school year are calculated using monthly births from September of one year through August of the following year; consistent with the birth dates used to determine age of eligibility for attending first grade. The birth data by county is then tied to the district-level enrollment data based on all counties that the district boundaries cross.

Because of some of the challenges with kindergarten data, KASB utilizes a ratio of births by school year to first grade enrollments seven years later; when the children would be turning seven years old and therefore be eligible for first-grade enrollment.

This ratio, which serves as a comparison between children born in the district to the number of students enrolling in first grade within the district seven years later, serves as the basis for the enrollment estimates for the district. Limitations of this ratio include the fact that it does not take into account children moving into or out of the district's boundaries, and also that the county to school district relationship is not a perfect one; as other school district boundaries also cross the counties used for many districts' calculations.

In order to estimate the first grade enrollment numbers for future years, a five-year rolling average is utilized. Such an average is calculated by determining the average ratio for the past five years in order to create the ratio for the first year of the projection, then taking the ratio for the past four years plus the ratio calculated for the first year of the projection and averaging them in order to create the ratio for the second year of the projection, and so forth. Rolling averages are commonly utilized in order to minimize the impact of short-term fluctuations or deviations on the overall projections.

The calculated ratios for five years' worth of school years are then applied to the actual resident live births in order to determine estimated first grade enrollment numbers.

Cohort Survival Rate

For grade levels 2 through 12, a cohort survival ratio is calculated and utilized. The cohort survival ratio determines the relationship between the number of students at a particular grade level one year and the number of students at the next grade level the following year. For kindergarten, the ratio is calculated

backwards; determining the ratio of the number of students in first grade one year and the number of students in kindergarten the year prior. Again for these calculations a five-year rolling average is utilized.

Other Grade Levels

For Pre-Kindergarten, 4-year-old at risk, Special Education 3 and 4-year olds, and Nongraded students, a five-year average ratio of total K-12 students to each group is calculated. Note that for this analysis, the 2016-17 ratio was used rather than the 5 year rolling average for nongraded students due to a drastic reduction in the number of these students reported during the 2015-16 and 2016-17 school years, making the five-year average calculations ineffective for this grade classification.

Lunch Status

In order to estimate the enrollment numbers for student participation in the National School Lunch Program, a ratio of each group to the total number of students in K-12 for the same year is calculated, and again a five year rolling average is utilized to project numbers for the next five years. Note that for this analysis, a report from KSDE indicating the percent of students eligible for free, reduced-price, and full-price lunch by district generated December 2016 was used for the 2016-17 numbers.

Average Age

District average age was calculated by assigning an age to each grade level, multiplying the numbers by grade, then dividing by total enrollment. If a district's average age is increasing, that means their student population is aging and decreases in enrollment may be coming in the future. If a district's average age is decreasing, that means their student population is getting younger and increases in enrollment maybe coming in the future.

Total Students

Table One shows the total student headcounts by year. Figure One shows total student headcounts by year, color-coded by district size. Appendix A at the back of this report shows the total student headcounts by year and by district.

Historical data shows that the number of students enrolled in public schools in Kansas increased modestly from 2008-09 through 2014-15. From 2014-15 to 2015-16 and again from 2015-16 to 2016-17, the total student headcount saw slight decreases. The average annual change from 2011-12 to 2016-17 was 0.34 percent.

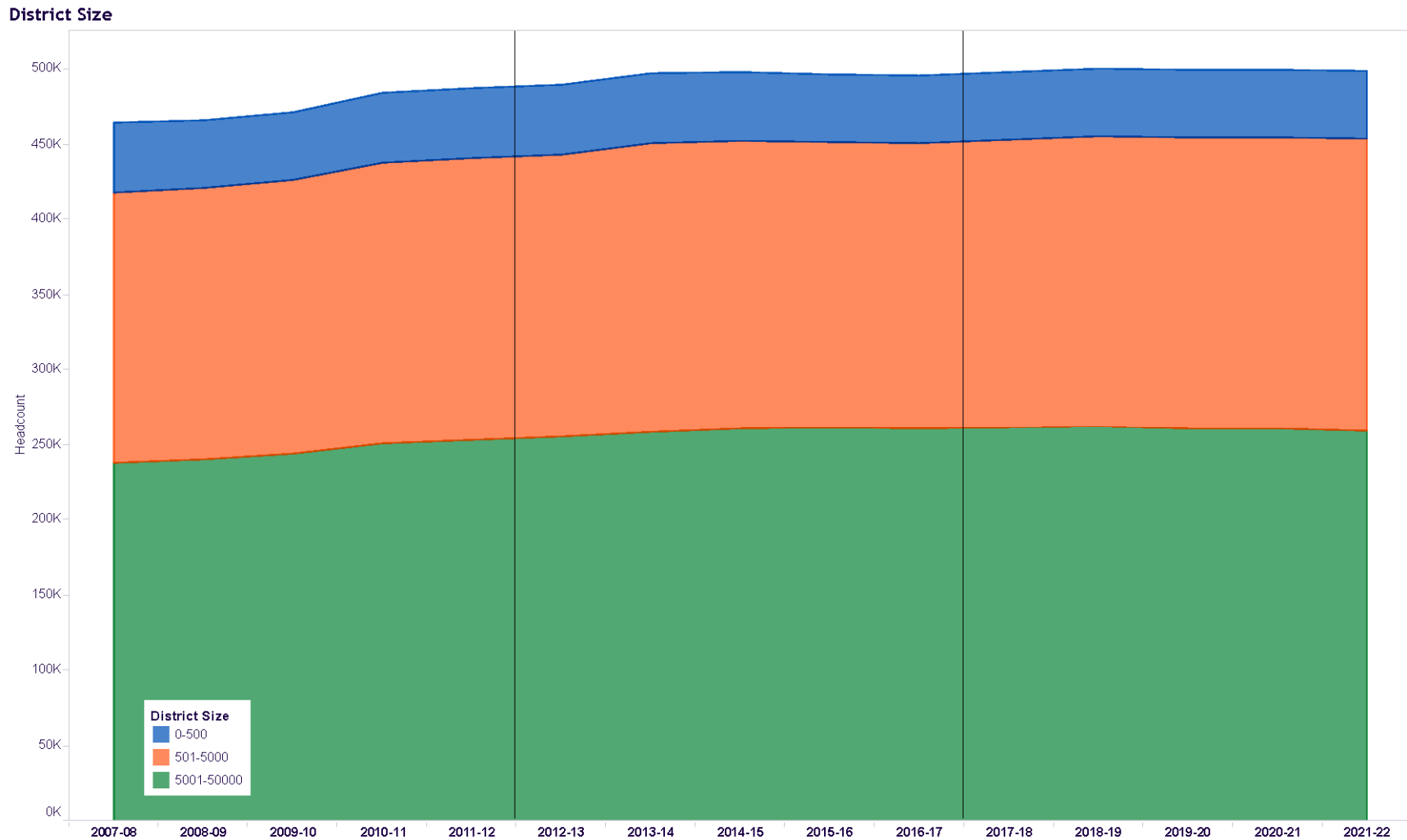
The five-year change from 2011-12 to 2016-17 was a 1.73 percent increase. 183 districts, or 64.0 percent, saw a decline in enrollment during this period, with all the growth happening in 101, or 35 percent, of the districts. Twelve districts saw a decline of 20 percent or more. Nine districts saw an increase of 20 percent or more. The average district saw a two percent decrease during this time.

Table One: Student Headcounts

School Year	Student Headcount	Annual Percent Change	5 Year	
			Average Annual Change	Cumulative Change
2007-08	464,118			
2008-09	466,115	0.43%		
2009-10	471,612	1.18%		
2010-11	484,056	2.64%		
2011-12	486,956	0.60%		
2012-13	489,582	0.54%		
2013-14	496,903	1.50%		
2014-15	497,778	0.18%	0.34%	1.73%
2015-16	496,739	-0.21%		
2016-17	495,356	-0.28%		
2017-18	497,727	0.48%		
2018-19	500,467	0.55%		
2019-20	499,288	-0.24%	0.13%	0.66%
2020-21	499,484	0.04%		
2021-22	498,614	-0.17%		

Projection data suggests that the total headcount will see modest increases from 2016-17 through 2018-19, then a slight decrease in 2019-20, virtually no change in 2020-21, then a modest decrease in 2021-22. The average annual change from 2016-17 to 2021-22 is expected to be a 0.13 percent increase with a cumulative increase of 0.66 percent.

Figure One: Student Headcounts by District Size



160 districts, or 55.9 percent, are projected to see a decline in enrollment during this period, with all the growth happening in 125, or 43.7 percent, of the districts. Six districts are expected to see a decline of 20 percent or more. Eleven districts are expected to see an increase of 20 percent or more. The average district is expected to see a 0.41 percent increase during this time.

Grade Levels

Table Three shows the total student headcounts by grade level. Figure Three shows total student headcounts by year, color-coded by grade.

From 2011-12 to 2016-17, grades K and 1 saw an overall decline in students, whereas grades 2-12 saw increases. The highest of these was 4th grade, with a 6.07 percent increase. Pre-Kindergarten students saw a 33.77 percent increase, and nongraded students saw a 36.56 percent decrease.

Analysis predicts that from 2016-17 to 2021-22, grades K through 5 will all see decreases in students, while grades 6 through 12 will see increases. The highest predicted increase is for nongraded students (18.69 percent), but as noted in the methods section above this is partially due to a dramatic decrease in these numbers for the past two years. Beyond that, the highest predicted increase is for 9th grade at 6.97 percent, and the highest decrease is predicted to be pre-kindergarten, with a 6.15 percent decrease.

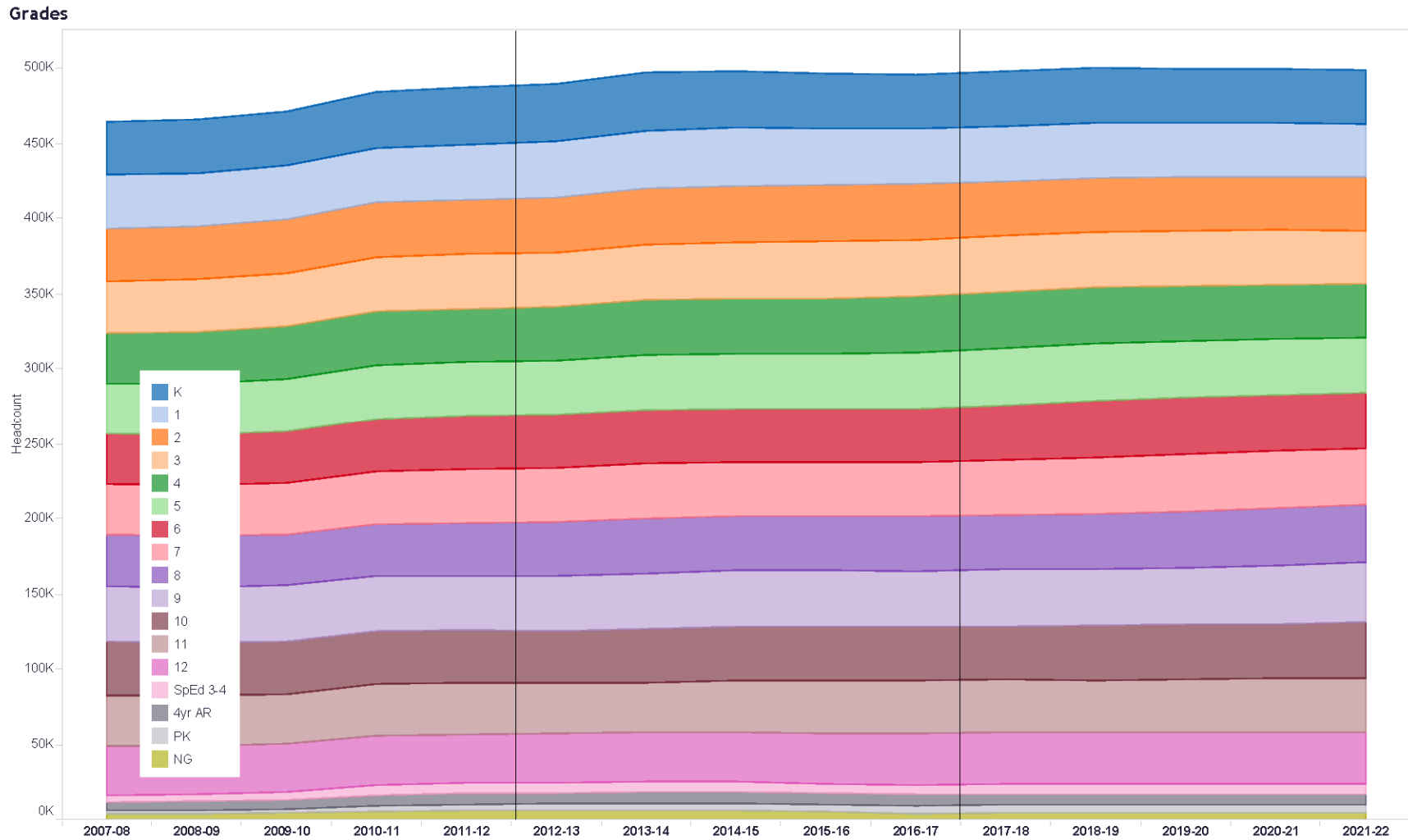
Table Two: Student Headcounts by Grade

	2007-08	2008-09	2009-10	2010-11	2011-12	2012-13	2013-14	2014-15	2015-16	2016-17	Pct Change 2011-12 to 2016-17
K	35,202	36,010	36,130	36,917	37,578	38,396	38,581	37,602	37,024	35,787	-4.77%
1	35,457	35,355	36,242	36,517	36,814	37,316	38,488	38,254	37,160	36,761	-0.14%
2	35,004	35,183	35,326	36,335	36,198	36,410	37,357	37,956	37,692	36,893	1.92%
3	34,363	35,098	35,462	35,628	36,226	36,032	36,748	37,208	37,838	37,600	3.79%
4	34,044	34,589	35,377	35,911	35,621	36,184	36,494	36,514	37,004	37,784	6.07%
5	33,184	34,304	34,884	35,832	36,012	35,578	36,620	36,495	36,322	36,975	2.67%
6	33,517	33,362	34,633	35,338	35,841	35,986	35,947	36,243	36,152	36,140	0.83%
7	34,002	33,896	33,868	35,222	35,490	35,997	36,464	35,874	36,178	36,160	1.89%
8	34,233	34,012	34,248	34,135	35,337	35,473	36,496	36,175	35,749	35,980	1.82%
9	37,079	36,865	36,870	36,906	36,166	37,036	36,926	37,453	37,367	37,185	2.82%
10	35,799	35,210	35,074	35,552	35,096	34,435	35,659	35,779	36,151	36,000	2.58%
11	33,436	33,346	33,097	33,631	33,781	33,476	33,174	34,276	34,531	34,975	3.53%
12	32,609	31,874	32,166	33,231	32,600	32,792	32,976	32,709	33,811	33,928	4.07%
SpEd 3-4	4,606	4,692	5,091	6,489	6,550	6,568	6,854	7,039	6,570	6,747	3.01%
4yr AR	5,843	6,290	6,630	7,292	7,417	7,500	7,306	7,231	7,054	7,028	-5.24%
PK	1,915	2,106	1,575	3,597	4,157	4,435	4,601	4,872	5,164	5,561	33.77%
NG	3,825	3,923	4,939	5,523	6,072	5,968	6,212	6,098	4,972	3,852	-36.56%
Grand Total	464,118	466,115	471,612	484,056	486,956	489,582	496,903	497,778	496,739	495,356	1.73%

(continued on next page)

	2016-17	2017-18	2018-19	2019-20	2020-21	2021-22	Pct Change 2011-12 to 2016-17
K	35,787	36,562	36,714	35,930	36,074	35,705	-0.23%
1	36,761	36,270	36,419	35,631	35,737	35,365	-3.80%
2	36,893	36,581	36,154	36,112	35,351	35,492	-3.80%
3	37,600	37,002	36,892	36,174	36,150	35,412	-5.82%
4	37,784	37,703	37,332	36,948	36,211	36,227	-4.12%
5	36,975	37,976	38,070	37,510	37,195	36,391	-1.58%
6	36,140	36,967	38,140	37,930	37,418	37,201	2.94%
7	36,160	36,379	37,360	38,282	38,092	37,649	4.12%
8	35,980	36,227	36,604	37,335	38,313	38,159	6.06%
9	37,185	37,471	37,747	37,917	38,753	39,778	6.97%
10	36,000	35,855	36,321	36,523	36,629	37,462	4.06%
11	34,975	34,674	34,692	35,074	35,296	35,408	1.24%
12	33,928	34,384	34,273	34,187	34,583	34,792	2.55%
SpEd 3-4	6,747	6,773	6,786	6,803	6,774	6,721	-0.39%
4yr AR	7,028	7,071	7,272	7,186	7,128	7,089	0.87%
PK	5,561	5,592	4,971	5,073	5,158	5,219	-6.15%
NG	3,852	4,336	4,707	4,672	4,639	4,572	18.69%
Grand Total	495,356	497,727	500,467	499,288	499,484	498,614	0.66%

Figure Two: Student Headcounts by Grade



Lunch Status

Table Two shows the total student headcounts by eligibility for participation in the National School Lunch Program. Figure Two shows total student headcounts by year, color-coded by school lunch status.

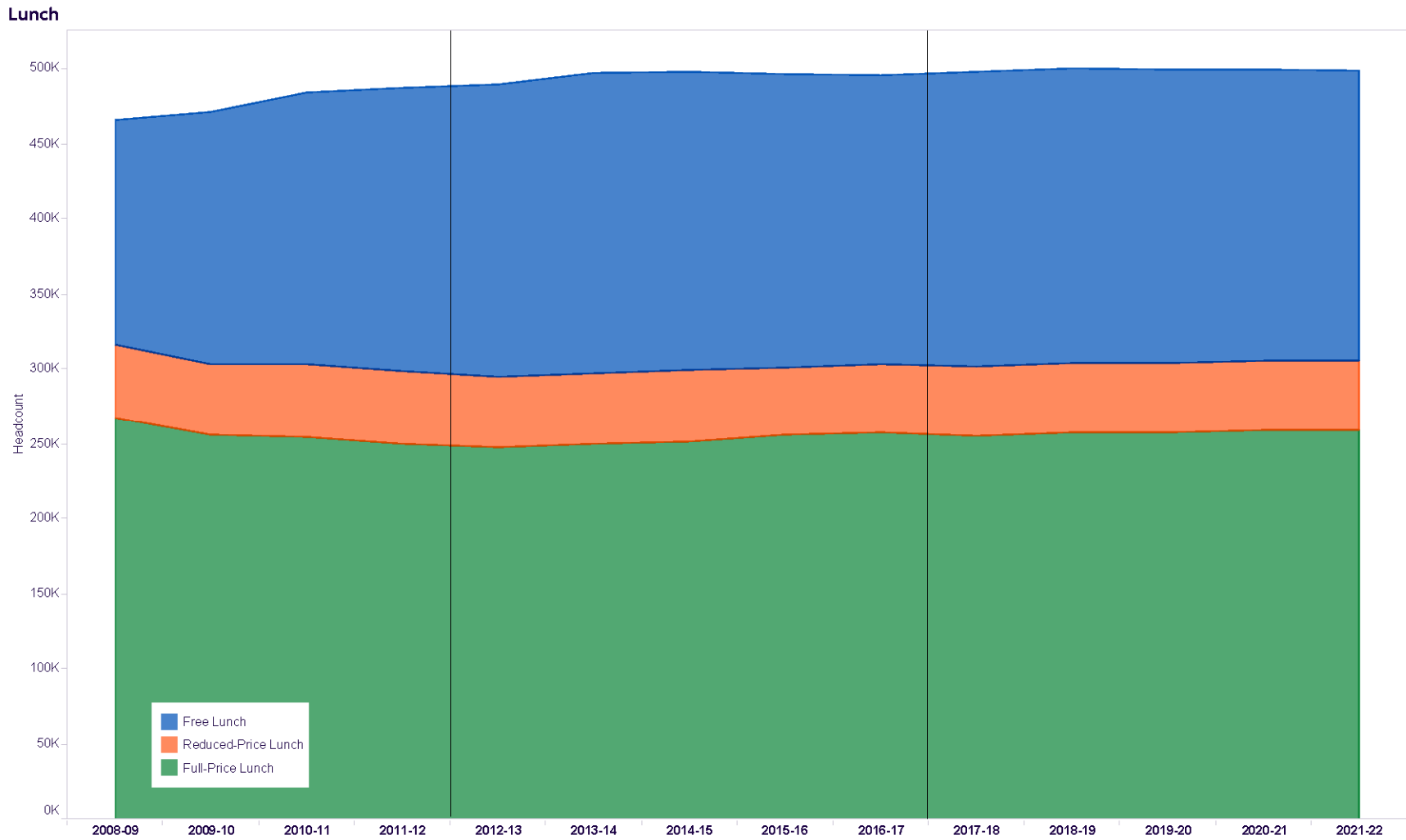
Table Three: School Lunch Percent

	2008-09	2009-10	2010-11	2011-12	2012-13	2013-14	2014-15	2015-16	2016-17	2017-18	2018-19	2019-20	2020-21	2021-22
Free Lunch	32.22%	35.72%	37.29%	38.73%	39.71%	40.14%	39.81%	39.43%	38.73%	39.36%	39.29%	39.10%	38.93%	38.81%
Reduced-Price Lunch	10.45%	9.95%	10.17%	9.92%	9.78%	9.62%	9.65%	9.10%	9.27%	9.43%	9.37%	9.32%	9.27%	9.30%
Full-Price Lunch	57.33%	54.33%	52.53%	51.35%	50.51%	50.24%	50.54%	51.46%	52.00%	51.20%	51.34%	51.57%	51.81%	51.89%

The percent of students eligible for free lunch increased each year from 2008-09 through 2013-14, going from 32.22 percent to 40.14 percent. It then decreased through 2016-17, down to 38.73 percent. The percent of students eligible for reduced-price lunch was highest in 2008-09 at 10.45 percent and lowest in 2015-16 at 9.10 percent. The percent of students not eligible for free or reduced price lunch decreased from 57.33 in 2008-09 to 50.24 in 2013-14, then up to 52.00 percent in 2016-17.

From 2016-17 to 2021-22, the percent of students eligible for free lunch is expected to increase from 38.73 percent to 39.36 percent in 2017-18 then decrease to 38.81 percent in 2021-22. The percent of students eligible for reduced price lunch is expected to stay between 9.27 percent and 9.43 percent. Students not eligible for either is expected to decrease to 51.20 percent in 2017-18 then increase to 51.89 percent by 2021-22.

Figure Three: School Lunch Status



Average Age

Table Four and Figure Four show the average student age overall and by district size.

Table Four: Average Age

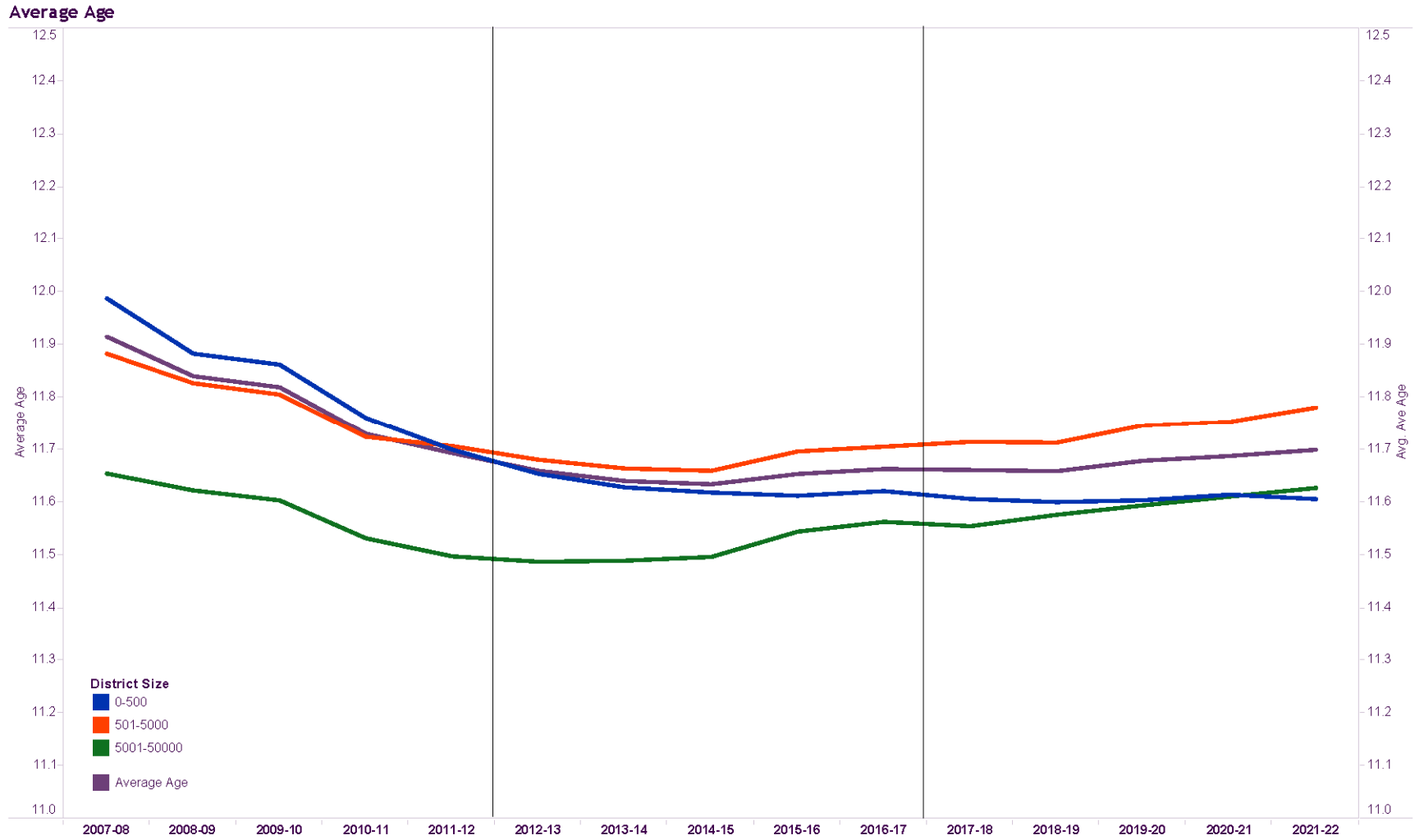
District Size	2011-12	2016-17	2021-22	Percent Change 2011-12 to 2016-17	Percent Change 2016-17 to 2021-22
0-500	11.70	11.62	11.61	-0.68%	-0.09%
501-5000	11.71	11.71	11.78	0.00%	0.60%
5001-50000	11.50	11.56	11.63	0.52%	0.61%
Grand Total	11.69	11.66	11.70	-0.26%	0.34%

As noted previously, average age is calculated to give an idea as to whether the student population is, on average, in the early or later part of their K-12 education experience. Ages range from 4 to 18, and as can be seen, the average has consistently been between 11.5 and 12.0 years since 2008-09.

From 2011-12 to 2016-17, statewide the average student age decreased slightly, indicating that there were more students in the earlier grades and suggesting that an increase in student population might happen in the coming years. 151 districts, or 52.8 percent, saw a decline in the average student age for this period. 130 districts, or 45.5 percent, saw an increase in the average student age for this period.

Projection data indicates that from 2016-17 to 2021-22, the statewide average student age is likely to increase slightly, suggesting that a decline in enrollment might be on the horizon. During this time 122 districts, or 42.7 percent, are expected to see a decline in average student age. 162 districts, or 56.6 percent, are expected to see an increase in the average student age.

Figure Four: Average Age



Conclusions

It is important to note that this analysis is based solely on two pieces of demographic information; county live birth data and public school district enrollment data. There are a variety of other factors that could impact future student enrollment numbers. These results should be used in conjunction with other information available to school districts and communities when planning and looking towards the future.

That being said, this data indicates the student population enrollment trends for the next five years should be very similar to what we have seen in the past five years. The total student population is expected to increase slightly overall during that time, but this will come in the form of increases in the next few years followed by slight decreases leading up to 2021-22. Information on grades and average ages does not suggest the nature of the student populations will change dramatically during that time.

Note that these conclusions are based on the state student population as a whole. Results at the district level are far more likely to show sharp increases or decreases predicted for the next five years. Appendix B provides instructions on how these district-level results can be obtained.

Appendix A: District Totals

District	Headcounts														Percent Change		
	2007-08	2008-09	2009-10	2010-11	2011-12	2012-13	2013-14	2014-15	2015-16	2016-17	2017-18	2018-19	2019-20	2020-21	2021-22	11-12 to 16-17	16-17 to 21-22
101 Erie-Galesburg USD 101	611	593	530	573	564	577	556	584	555	537	544	543	540	539	530	-4.79%	-1.30%
102 Cimarron-Ensign USD 102	694	720	728	754	750	721	723	711	677	672	677	709	694	693	688	-10.40%	2.38%
103 Cheylin USD 103	145	138	141	142	143	124	129	142	139	129	126	133	140	142	142	-9.79%	10.08%
105 Rawlins County USD 105	318	327	326	316	325	317	325	338	364	335	316	348	371	374	392	3.08%	17.01%
106 Western Plains USD 106	179	164	172	170	153	153	136	122	108	107	98	96	94	92	95	-30.07%	-11.21%
107 Rock Hills USD 107	278	281	314	305	319	331	308	311	302	319	317	319	322	356	377	0.00%	18.18%
108 Washington County USD 108	434	414	408	436	419	380	359	358	354	342	329	333	352	350	369	-18.38%	7.89%
109 Republic County USD 109	531	496	497	532	493	492	495	496	490	519	533	549	574	570	601	5.27%	15.80%
110 Thunder Ridge USD 110	0	241	245	269	256	248	239	228	222	217	220	222	216	215	209	-15.23%	-3.69%
111 Doniphan West USD 111			420	402	406	374	376	374	377	374	361	367	368	366	355	-7.88%	-5.08%
112 Central Plains USD 112				652	611	578	592	556	550	554	570	599	603	632	646	-9.33%	16.61%
113 Prairie Hills USD 113				1,271	1,286	1,190	1,146	1,153	1,174	1,126	1,088	1,091	1,086	1,077	1,054	-12.44%	-6.39%
114 Riverside USD 114				787	683	727	742	745	734	675	668	654	617	585	595	-1.17%	-11.85%
115 Nemaha Central USD 115					635	684	674	681	672	649	647	636	678	699	712	2.20%	9.71%
200 Greeley County USD 200	254	228	231	205	219	214	247	275	270	257	262	294	323	340	327	17.35%	27.24%
202 Turner-Kansas City USD 202	4,025	4,101	4,052	4,100	4,222	4,202	4,196	4,229	4,257	4,110	4,132	4,226	4,253	4,220	4,209	-2.65%	2.41%
203 Piper-Kansas City USD 203	1,583	1,635	1,706	1,745	1,844	1,858	1,935	2,054	2,129	2,276	2,267	2,313	2,404	2,473	2,542	23.43%	11.69%
204 Bonner Springs USD 204	2,499	2,389	2,498	2,516	2,551	2,546	2,568	2,660	2,771	2,733	2,723	2,749	2,757	2,793	2,788	7.13%	2.01%
205 Bluestem USD 205	651	624	550	554	562	538	536	533	506	500	511	517	526	530	537	-11.03%	7.40%
206 Remington-Whitewater USD 206	557	529	547	562	551	572	547	524	550	521	535	545	545	538	537	-5.44%	3.07%
207 Fort Leavenworth USD 207	1,690	1,775	1,967	1,996	1,932	1,904	1,875	1,775	1,873	1,824	1,843	1,757	1,752	1,760	1,802	-5.59%	-1.21%
208 WaKeeney USD 208	429	450	414	406	392	392	411	402	396	414	402	388	383	381	400	5.61%	-3.38%
209 Moscow USD 209	234	230	212	210	218	189	208	217	193	180	187	200	193	189	188	-17.43%	4.44%
210 Hugoton USD 210	1,040	1,008	1,093	1,138	1,169	1,156	1,176	1,162	1,140	1,059	1,121	1,112	1,127	1,080	1,084	-9.41%	2.36%
211 Norton Community USD 211	699	711	715	765	749	750	726	725	707	667	674	709	711	692	706	-10.95%	5.85%
212 Northern Valley USD 212	212	217	208	231	216	194	197	194	180	163	171	171	160	160	156	-24.54%	-4.29%
214 Ulysses USD 214	1,729	1,713	1,715	1,737	1,758	1,758	1,797	1,849	1,810	1,766	1,760	1,722	1,703	1,716	1,682	0.46%	-4.76%
215 Lakin USD 215	657	672	677	634	689	683	690	713	643	657	656	707	703	703	694	-4.64%	5.63%
216 Deerfield USD 216	306	294	258	323	272	253	267	213	204	212	216	225	216	211	219	-22.06%	3.30%
217 Rolla USD 217	218	212	205	216	180	194	194	204	176	142	139	137	130	119	104	-21.11%	-26.76%
218 Elkhart USD 218	720	776	724	944	1,026	1,071	1,236	1,054	1,107	1,156	1,136	1,175	1,133	1,081	1,053	12.67%	-8.91%
219 Minneola USD 219	286	281	273	280	267	267	259	255	241	244	237	241	239	234	231	-8.61%	-5.33%
220 Ashland USD 220	221	234	228	225	229	204	213	210	205	201	197	202	202	201	204	-12.23%	1.49%
223 Barnes USD 223	443	425	418	263	467	488	481	439	449	451	433	432	431	433	443	-3.43%	-1.77%
224 Clifton-Clyde USD 224	345	331	306	324	325	335	336	346	345	330	334	348	348	343	344	1.54%	4.24%
225 Fowler USD 225	188	176	173	181	171	185	168	168	143	157	170	159	159	160	163	-8.19%	3.82%
226 Meade USD 226	499	488	511	478	473	454	442	428	409	412	391	377	374	381	394	-12.90%	-4.37%
227 Hodgeman County USD 227	288	268	278	287	319	330	305	297	296	292	292	286	290	282	277	-8.46%	-5.14%
229 Blue Valley USD 229	20,797	20,992	21,367	21,663	21,930	22,164	22,405	22,403	22,762	22,852	22,690	22,648	22,401	22,372	22,340	4.20%	-2.24%
230 Spring Hill USD 230	1,865	2,516	3,152	3,635	3,008	2,933	3,100	3,361	3,660	3,930	4,015	4,360	4,667	5,007	5,183	30.65%	31.88%

District	Headcounts															Percent Change	
	2007-08	2008-09	2009-10	2010-11	2011-12	2012-13	2013-14	2014-15	2015-16	2016-17	2017-18	2018-19	2019-20	2020-21	2021-22	11-12 to 16-17	16-17 to 21-22
231 Gardner-Edgerton USD 231	4,307	4,500	4,792	5,112	5,316	5,446	5,530	5,733	5,863	6,041	6,100	6,157	6,235	6,332	6,412	13.64%	6.14%
232 De Soto USD 232	6,095	6,452	6,547	6,721	6,889	6,980	7,065	7,089	7,057	7,199	7,126	7,096	7,039	7,002	6,936	4.50%	-3.65%
233 Olathe USD 233	26,340	26,842	27,160	27,879	28,190	28,762	29,086	29,314	29,451	29,421	29,576	29,682	29,530	29,516	29,453	4.37%	0.11%
234 Fort Scott USD 234	2,005	2,037	1,978	1,975	1,924	1,910	1,938	1,906	1,911	1,881	1,883	1,866	1,850	1,838	1,816	-2.23%	-3.46%
235 Uniontown USD 235	471	461	467	476	475	457	457	455	452	443	431	428	414	428	417	-6.74%	-5.87%
237 Smith Center USD 237	489	462	454	433	423	413	401	411	395	405	405	419	414	414	440	-4.26%	8.64%
239 North Ottawa County USD 239	610	625	641	627	612	616	645	629	629	616	607	605	605	596	604	0.65%	-1.95%
240 Twin Valley USD 240	664	658	645	647	624	631	640	647	609	605	615	638	639	623	623	-3.04%	2.98%
241 Wallace County USD 241	218	204	211	199	217	203	196	193	180	202	201	211	215	227	227	-6.91%	12.38%
242 Weskan USD 242	114	107	116	119	102	106	96	100	95	104	102	108	109	107	109	1.96%	4.81%
243 Lebo-Waverly USD 243	577	569	543	536	512	519	524	484	446	436	406	393	380	366	351	-14.84%	-19.50%
244 Burlington USD 244	870	868	864	876	861	841	854	854	852	858	860	873	857	851	839	-0.35%	-2.21%
245 LeRoy-Gridley USD 245	277	293	255	252	231	240	219	238	232	224	219	204	199	194	180	-3.03%	-19.64%
246 Northeast USD 246	594	573	604	585	536	511	520	531	517	516	493	469	465	463	457	-3.73%	-11.43%
247 Cherokee USD 247	764	727	684	733	695	693	650	592	546	496	475	443	406	392	380	-28.63%	-23.39%
248 Girard USD 248	1,045	1,035	1,053	1,080	1,081	1,079	1,038	1,045	1,052	1,035	1,024	1,014	1,012	1,033	1,026	-4.26%	-0.87%
249 Frontenac USD 249	834	867	906	907	926	930	936	923	926	952	939	937	926	954	938	2.81%	-1.47%
250 Pittsburg USD 250	2,739	2,806	2,890	2,775	2,847	2,939	3,021	3,081	3,104	3,144	3,143	3,171	3,123	3,210	3,169	10.43%	0.80%
251 North Lyon County USD 251	565	534	526	455	438	442	447	422	430	395	399	390	379	370	361	-9.82%	-8.61%
252 Southern Lyon County USD 252	572	544	535	555	540	547	551	532	528	511	490	472	464	466	445	-5.37%	-12.92%
253 Emporia USD 253	4,809	4,664	4,622	4,682	4,749	4,664	4,599	4,577	4,680	4,673	4,664	4,615	4,597	4,583	4,507	-1.60%	-3.55%
254 Barber County North USD 254	555	532	481	477	465	496	489	482	483	492	542	562	581	577	602	5.81%	22.36%
255 South Barber USD 255	246	239	252	236	240	252	269	258	257	262	255	266	261	268	268	9.17%	2.29%
256 Marmaton Valley USD 256	348	352	359	358	331	309	300	299	298	292	291	277	281	276	276	-11.78%	-5.48%
257 Iola USD 257	1,495	1,444	1,352	1,344	1,381	1,356	1,347	1,342	1,317	1,305	1,304	1,262	1,232	1,210	1,154	-5.50%	-11.57%
258 Humboldt USD 258	519	508	539	576	683	728	787	810	882	815	830	813	795	789	787	19.33%	-3.44%
259 Wichita USD 259	46,843	47,284	47,758	49,788	49,892	50,364	50,804	51,026	51,002	50,648	51,155	51,076	50,770	50,276	49,931	1.52%	-1.42%
260 Derby USD 260	6,444	6,544	6,671	6,753	6,795	6,950	7,064	7,117	7,133	7,128	7,137	7,129	7,120	7,093	7,024	4.90%	-1.46%
261 Haysville USD 261	4,818	4,917	5,048	5,267	5,240	5,370	5,375	5,507	5,568	5,648	5,659	5,667	5,677	5,655	5,689	7.79%	0.73%
262 Valley Center USD 262	2,586	2,565	2,593	2,691	2,684	2,722	2,768	2,831	2,868	2,879	2,888	2,909	2,936	2,917	2,900	7.27%	0.73%
263 Mulvane USD 263	1,932	1,900	1,958	1,940	1,893	1,845	1,867	1,849	1,818	1,821	1,811	1,837	1,834	1,795	1,793	-3.80%	-1.54%
264 Clearwater USD 264	1,344	1,347	1,324	1,323	1,260	1,209	1,219	1,192	1,188	1,172	1,159	1,156	1,148	1,114	1,098	-6.98%	-6.31%
265 Goddard USD 265	4,960	5,066	5,149	5,181	5,316	5,349	5,504	5,601	5,686	5,688	5,656	5,674	5,675	5,655	5,622	7.00%	-1.16%
266 Maize USD 266	6,423	6,572	6,615	6,636	6,969	7,121	7,219	7,291	7,337	7,357	7,372	7,307	7,300	7,287	7,261	5.57%	-1.30%
267 Renwick USD 267	2,022	1,996	2,014	1,985	1,940	1,923	1,923	1,938	1,901	1,860	1,865	1,823	1,822	1,796	1,788	-4.12%	-3.87%
268 Cheney USD 268	818	837	827	813	806	813	807	813	790	808	824	822	813	812	802	0.25%	-0.74%
269 Palco USD 269	174	176	157	167	152	126	139	135	127	94	112	123	129	128	117	-38.16%	24.47%
270 Plainville USD 270	394	407	398	402	415	402	399	393	357	346	347	323	315	286	268	-16.63%	-22.54%
271 Stockton USD 271	329	312	302	297	299	301	313	315	323	345	345	361	379	389	395	15.38%	14.49%
272 Waconda USD 272	386	392	392	410	360	351	342	324	322	330	342	337	339	359	363	-8.33%	10.00%
273 Beloit USD 273	754	754	762	791	800	808	816	842	827	807	810	826	829	808	806	0.88%	-0.12%
274 Oakley USD 274	481	472	471	486	479	470	446	453	437	431	421	417	415	427	415	-10.02%	-3.71%
275 Triplains USD 275	97	90	86	90	87	100	81	70	71	65	65	57	53	57	54	-25.29%	-16.92%

District	Headcounts														Percent Change		
	2007-08	2008-09	2009-10	2010-11	2011-12	2012-13	2013-14	2014-15	2015-16	2016-17	2017-18	2018-19	2019-20	2020-21	2021-22	11-12 to 16-17	16-17 to 21-22
281 Graham County USD 281	406	394	397	402	424	422	407	451	400	381	381	425	435	433	429	-10.14%	12.60%
282 West Elk USD 282	378	391	366	339	335	324	340	347	368	363	366	383	389	407	414	8.36%	14.05%
283 Elk Valley USD 283	193	198	209	196	182	177	154	153	119	121	115	108	96	95	95	-33.52%	-21.49%
284 Chase County USD 284	456	432	423	400	375	366	379	356	354	347	337	336	332	333	326	-7.47%	-6.05%
285 Cedar Vale USD 285	151	147	150	152	167	181	178	178	189	195	193	205	206	206	205	16.77%	5.13%
286 Chautauqua County USD 286	400	383	394	366	378	349	362	389	393	382	376	384	395	402	403	1.06%	5.50%
287 West Franklin USD 287	767	733	728	672	641	630	604	577	592	610	597	584	586	580	581	-4.84%	-4.75%
288 Central Heights USD 288	592	573	552	583	601	575	587	597	579	568	550	547	540	541	541	-5.49%	-4.75%
289 Wellsville USD 289	869	881	877	874	841	833	810	816	803	804	799	798	784	760	767	-4.40%	-4.60%
290 Ottawa USD 290	2,539	2,541	2,569	2,543	2,524	2,537	2,520	2,553	2,513	2,516	2,511	2,473	2,463	2,431	2,411	-0.32%	-4.17%
291 Grinnell USD 291	66	60	57	79	96	97	102	89	96	92	92	91	87	90	83	-4.17%	-9.78%
292 Wheatland USD 292	98	81	78	112	119	113	113	117	117	110	108	123	122	121	131	-7.56%	19.09%
293 Quinter USD 293	322	285	280	298	302	302	304	304	291	304	302	311	320	329	344	0.66%	13.16%
294 Oberlin USD 294	405	381	372	371	350	367	364	357	335	347	347	358	367	365	371	-0.86%	6.92%
297 Saint Francis USD 297	319	307	296	300	295	293	298	284	279	283	293	309	306	315	334	-4.07%	18.02%
298 Lincoln USD 298	358	359	358	369	369	362	376	358	384	360	368	368	361	372	370	-2.44%	2.78%
299 Sylvan Grove USD 299	152	153	146	272	264	267	272	244	246	256	264	272	266	276	272	-3.03%	6.25%
300 South Central USD 300	347	321	329	336	361	359	364	350	358	344	344	338	341	342	338	-4.71%	-1.74%
303 Ness City USD 303	293	301	316	335	336	342	331	325	318	329	329	326	321	317	321	-2.08%	-2.43%
305 Salina USD 305	7,154	7,074	7,162	7,347	7,289	7,305	7,305	7,388	7,369	7,396	7,357	7,286	7,260	7,208	7,192	1.47%	-2.76%
306 Southeast Of Saline USD 306	699	695	708	740	742	733	744	727	695	698	674	672	672	662	663	-5.93%	-5.01%
307 Ell-Saline USD 307	474	470	485	478	485	499	513	490	467	464	445	440	442	432	422	-4.33%	-9.05%
308 Hutchinson USD 308	4,502	4,530	4,657	4,929	5,154	5,132	5,191	5,164	4,995	4,681	4,632	4,566	4,416	4,296	4,141	-9.18%	-11.54%
309 Nickerson USD 309	1,252	1,236	1,250	1,241	1,204	1,200	1,191	1,185	1,159	1,195	1,179	1,144	1,123	1,101	1,080	-0.75%	-9.62%
310 Fairfield USD 310	366	338	341	316	309	308	307	315	330	317	318	327	332	335	330	2.59%	4.10%
311 Pretty Prairie USD 311	279	272	257	281	278	285	284	281	263	244	248	260	252	252	245	-12.23%	0.41%
312 Haven USD 312	1,036	1,043	1,045	1,118	1,030	993	978	953	902	908	909	863	832	808	802	-11.84%	-11.67%
313 Buhler USD 313	2,317	2,268	2,272	2,282	2,285	2,303	2,216	2,268	2,309	2,377	2,401	2,375	2,391	2,391	2,388	4.03%	0.46%
314 Brewster USD 314	103	96	99	94	72	92	102	115	128	148	166	182	209	248	281	105.56%	89.86%
315 Colby USD 315	1,001	974	958	958	929	1,002	960	953	922	886	886	912	902	943	940	-4.63%	6.09%
316 Golden Plains USD 316	206	213	227	231	222	235	209	206	199	184	184	203	199	195	192	-17.12%	4.35%
320 Wamego USD 320	1,359	1,349	1,382	1,444	1,456	1,547	1,557	1,577	1,547	1,554	1,572	1,584	1,577	1,591	1,562	6.73%	0.51%
321 Kaw Valley USD 321	1,248	1,328	1,274	1,309	1,282	1,271	1,265	1,255	1,243	1,255	1,293	1,287	1,291	1,300	1,292	-2.11%	2.95%
322 Onaga-Havensville-Wheaton USD 322	367	337	334	329	334	338	324	321	311	333	313	297	302	300	306	-0.30%	-8.11%
323 Rock Creek USD 323	856	861	883	880	887	901	903	948	990	1,043	1,066	1,093	1,133	1,159	1,199	17.59%	14.96%
325 Phillipsburg USD 325	655	685	643	635	622	617	614	622	632	621	629	648	648	671	667	-0.16%	7.41%
326 Logan USD 326	190	177	191	196	197	203	185	174	169	167	154	148	142	139	136	-15.23%	-18.56%
327 Ellsworth USD 327	595	624	600	637	604	600	611	618	631	641	640	643	652	655	663	6.13%	3.43%
329 Mill Creek Valley USD 329	517	495	500	491	482	473	492	475	442	446	446	438	432	430	421	-7.47%	-5.61%
330 Mission Valley USD 330	513	493	518	501	497	499	490	474	477	497	482	466	450	446	433	0.00%	-12.88%
331 Kingman-Norwich USD 331	1,124	1,105	1,062	1,100	1,051	1,051	992	1,003	984	979	979	952	944	918	936	-6.85%	-4.39%
332 Cunningham USD 332	191	194	191	181	193	191	181	188	178	182	188	187	193	198	200	-5.70%	9.89%
333 Concordia USD 333	1,142	1,169	1,168	1,133	1,126	1,098	1,078	1,082	1,083	1,095	1,063	1,069	1,061	1,051	1,060	-2.75%	-3.20%

District	Headcounts															Percent Change	
	2007-08	2008-09	2009-10	2010-11	2011-12	2012-13	2013-14	2014-15	2015-16	2016-17	2017-18	2018-19	2019-20	2020-21	2021-22	11-12 to 16-17	16-17 to 21-22
334 Southern Cloud USD 334	254	239	266	260	255	220	247	243	218	207	191	195	190	177	166	-18.82%	-19.81%
335 North Jackson USD 335	413	372	401	416	397	410	427	414	405	396	404	388	384	379	383	-0.25%	-3.28%
336 Holton USD 336	1,089	1,082	1,034	1,132	1,174	1,173	1,207	1,182	1,139	1,164	1,145	1,174	1,166	1,176	1,155	-0.85%	-0.77%
337 Royal Valley USD 337	953	913	926	953	941	953	951	910	841	837	805	812	792	776	758	-11.05%	-9.44%
338 Valley Falls USD 338	444	436	436	428	434	408	430	420	405	394	395	410	416	424	419	-9.22%	6.35%
339 Jefferson County North USD 339	516	520	504	498	485	468	470	460	458	473	470	463	466	469	472	-2.47%	-0.21%
340 Jefferson West USD 340	953	950	927	892	882	885	886	851	861	861	840	829	836	841	816	-2.38%	-5.23%
341 Oskaloosa USD 341	576	558	576	547	543	548	567	568	588	612	603	620	630	655	653	12.71%	6.70%
342 McLouth USD 342	570	550	524	527	536	535	555	538	502	500	518	503	487	481	472	-6.72%	-5.60%
343 Perry USD 343	982	968	996	981	910	894	850	795	781	761	759	750	730	724	715	-16.37%	-6.04%
344 Pleasanton USD 344	391	375	345	358	360	359	404	393	368	363	388	404	390	394	381	0.83%	4.96%
345 Seaman USD 345	3,611	3,666	3,730	3,823	3,895	3,959	3,938	3,973	3,861	3,849	3,885	3,868	3,796	3,795	3,722	-1.18%	-3.30%
346 Jayhawk USD 346	555	556	546	529	525	556	558	556	581	594	596	591	601	622	629	13.14%	5.89%
347 Kinsley-Offerle USD 347	363	331	381	399	395	367	384	370	351	357	354	357	350	344	345	-9.62%	-3.36%
348 Baldwin City USD 348	1,410	1,444	1,411	1,435	1,436	1,419	1,434	1,423	1,403	1,444	1,450	1,465	1,481	1,484	1,483	0.56%	2.70%
349 Stafford USD 349	287	294	287	282	288	297	306	287	277	239	257	282	278	278	278	-17.01%	16.32%
350 Saint John-Hudson USD 350	393	375	339	328	328	352	382	392	372	360	359	378	376	393	405	9.76%	12.50%
351 Macksville USD 351	321	319	282	290	297	287	282	261	235	248	247	246	234	231	234	-16.50%	-5.65%
352 Goodland USD 352	1,027	958	916	967	1,034	1,072	1,086	1,099	921	939	968	999	1,027	1,030	988	-9.19%	5.22%
353 Wellington USD 353	1,723	1,764	1,730	1,756	1,715	1,675	1,607	1,643	1,623	1,622	1,606	1,594	1,579	1,557	1,558	-5.42%	-3.95%
355 Ellinwood USD 355	488	480	459	449	447	472	485	483	505	503	560	611	647	702	723	12.53%	43.74%
356 Conway Springs USD 356	665	639	618	620	637	627	600	580	569	535	524	515	509	493	480	-16.01%	-10.28%
357 Belle Plaine USD 357	776	733	692	656	640	666	645	643	654	646	633	622	623	607	598	0.94%	-7.43%
358 Oxford USD 358	387	358	341	368	347	385	368	378	448	452	469	439	442	450	477	30.26%	5.53%
359 Argonia USD 359	210	201	192	185	181	175	171	180	171	194	196	200	198	210	206	7.18%	6.19%
360 Caldwell USD 360	244	235	248	256	245	281	270	267	263	258	264	265	262	248	244	5.31%	-5.43%
361 Anthony-Harper-Chaparral USD 361	884	847	903	897	887	912	900	908	881	861	865	852	857	870	886	-2.93%	2.90%
362 Prairie View USD 362	1,034	1,011	991	1,013	1,007	989	986	936	924	957	936	928	899	920	921	-4.97%	-3.76%
363 Holcomb USD 363	876	904	1,011	1,051	1,039	1,035	1,006	1,017	1,050	1,030	1012	995	987	961	974	-0.87%	-5.44%
364 Marysville USD 364	801	788	777	753	746	771	780	804	802	787	807	810	838	825	853	5.50%	8.39%
365 Garnett USD 365	1,157	1,160	1,150	1,137	1,098	1,096	1,127	1,073	1,039	998	995	969	948	919	886	-9.11%	-11.22%
366 Woodson USD 366	467	435	432	466	474	480	487	482	494	491	482	475	462	458	448	3.59%	-8.76%
367 Osawatomie USD 367	1,206	1,189	1,198	1,211	1,192	1,212	1,253	1,284	1,186	1,161	1,140	1,170	1,115	1,121	1,108	-2.60%	-4.57%
368 Paola USD 368	2,111	2,054	2,060	2,091	2,076	2,042	1,964	2,025	2,023	2,032	2,000	1,991	1,967	1,965	1,929	-2.12%	-5.07%
369 Burrton USD 369	253	268	253	271	275	254	252	250	253	246	261	269	268	269	262	-10.55%	6.50%
371 Montezuma USD 371	214	169	174	254	256	265	260	265	273	243	246	234	227	227	220	-5.08%	-9.47%
372 Silver Lake USD 372	742	764	787	753	744	729	730	730	705	718	717	709	711	717	707	-3.49%	-1.53%
373 Newton USD 373	3,737	3,670	3,686	3,639	3,770	3,746	3,749	3,700	3,646	3,539	3,496	3,432	3,405	3,359	3,277	-6.13%	-7.40%
374 Sublette USD 374	539	509	520	540	526	501	497	528	478	469	448	454	442	438	426	-10.84%	-9.17%
375 Circle USD 375	1,622	1,617	1,631	1,828	1,893	1,915	1,917	1,965	2,008	1,971	2,008	1,981	1,945	1,920	1,901	4.12%	-3.55%
376 Sterling USD 376	577	556	557	550	534	508	528	551	538	515	516	515	508	502	496	-3.56%	-3.69%
377 Atchison County USD 377	736	729	714	682	658	640	629	616	592	538	537	514	504	491	473	-18.24%	-12.08%
378 Riley County USD 378	706	700	710	727	735	762	758	713	720	707	732	744	739	748	749	-3.81%	5.94%

District	Headcounts															Percent Change	
	2007-08	2008-09	2009-10	2010-11	2011-12	2012-13	2013-14	2014-15	2015-16	2016-17	2017-18	2018-19	2019-20	2020-21	2021-22	11-12 to 16-17	16-17 to 21-22
379 Clay Center USD 379	1,434	1,432	1,424	1,406	1,387	1,402	1,428	1,405	1,403	1,379	1,378	1,385	1,379	1,377	1,362	-0.58%	-1.23%
380 Vermillion USD 380	565	575	576	586	571	591	611	606	607	622	621	639	655	667	679	8.93%	9.16%
381 Spearville USD 381	371	367	373	376	363	355	353	352	357	356	357	348	351	355	356	-1.93%	0.00%
382 Pratt USD 382	1,161	1,134	1,167	1,143	1,211	1,282	1,301	1,320	1,303	1,331	1,372	1,459	1,489	1,486	1,537	9.91%	15.48%
383 Manhattan-Ogden USD 383	5,766	6,142	6,193	6,375	6,552	6,385	6,562	6,571	6,579	6,620	6,816	6,880	6,970	7,065	7,128	1.04%	7.67%
384 Blue Valley-Randolph USD 384	209	212	231	232	216	202	198	200	210	233	233	232	240	245	263	7.87%	12.88%
385 Andover USD 385	4,465	4,729	4,901	5,174	5,316	5,523	10,102	8,907	8,045	8,318	9,757	11,520	11,769	12,301	13,011	56.47%	56.42%
386 Madison-Virgil USD 386	250	240	246	260	264	245	258	243	234	224	210	200	193	187	177	-15.15%	-20.98%
387 Altoona-Midway USD 387	217	203	206	198	178	221	206	233	197	182	194	193	191	185	176	2.25%	-3.30%
388 Ellis USD 388	377	408	426	415	389	500	502	479	489	473	489	497	495	491	479	21.59%	1.27%
389 Eureka USD 389	647	640	654	673	666	684	692	690	657	662	665	657	655	653	649	-0.60%	-1.96%
390 Hamilton USD 390	104	104	102	94	91	88	84	90	81	60	56	53	49	43	35	-34.07%	-41.67%
392 Osborne County USD 392	359	354	351	343	326	323	303	302	295	288	263	266	265	259	260	-11.66%	-9.72%
393 Solomon USD 393	422	403	385	363	355	351	341	338	318	334	335	320	309	309	308	-5.92%	-7.78%
394 Rose Hill USD 394	1,777	1,717	1,793	1,797	1,757	1,715	1,693	1,686	1,665	1,622	1,608	1,581	1,576	1,573	1,547	-7.68%	-4.62%
395 La Crosse USD 395	318	312	304	305	302	289	289	305	291	289	303	300	309	300	298	-4.30%	3.11%
396 Douglass USD 396	832	818	776	753	756	755	731	722	721	744	725	726	707	715	721	-1.59%	-3.09%
397 Centre USD 397	259	252	250	276	340	333	404	496	482	485	483	434	472	502	488	42.65%	0.62%
398 Peabody-Burns USD 398	353	346	343	334	323	300	297	285	275	279	257	262	263	250	254	-13.62%	-8.96%
399 Paradise USD 399	154	135	135	160	146	156	141	131	127	117	116	122	127	128	129	-19.86%	10.26%
400 Smoky Valley USD 400	1,066	1,043	1,079	1,052	1,062	1,106	1,166	1,114	1,557	1,572	1,648	1,816	2,048	2,332	2,478	48.02%	57.63%
401 Chase-Raymond USD 401	141	151	149	165	163	167	184	186	178	165	160	160	147	147	135	1.23%	-18.18%
402 Augusta USD 402	2,347	2,331	2,378	2,338	2,319	2,338	2,361	2,336	2,294	2,295	2,279	2,236	2,190	2,158	2,130	-1.03%	-7.19%
403 Otis-Bison USD 403	193	175	180	185	188	203	234	259	276	260	257	271	266	268	276	38.30%	6.15%
404 Riverton USD 404	850	859	827	797	819	787	772	767	744	741	733	721	702	696	688	-9.52%	-7.15%
405 Lyons USD 405	762	743	809	865	853	833	844	876	864	859	862	868	872	877	894	0.70%	4.07%
407 Russell County USD 407	979	962	987	850	805	809	820	798	826	836	840	859	843	837	835	3.85%	-0.12%
408 Marion-Florence USD 408	616	625	605	590	554	554	524	509	523	521	504	490	481	499	491	-5.96%	-5.76%
409 Atchison USD 409	1,673	1,677	1,743	1,737	1,719	1,701	1,657	1,679	1,718	1,743	1,750	1,782	1,762	1,789	1,776	1.40%	1.89%
410 Durham-Hillsboro-Lehigh USD 410	659	638	594	614	608	632	584	592	569	622	607	589	588	608	596	2.30%	-4.18%
411 Goessel USD 411	263	255	267	256	267	263	282	287	275	274	278	277	272	269	260	2.62%	-5.11%
412 Hoxie Community USD 412	335	345	338	364	369	380	389	383	411	442	479	489	503	513	530	19.78%	19.91%
413 Chanute USD 413	1,913	1,912	1,838	1,971	1,908	1,854	1,937	1,901	1,868	1,868	1,883	1,864	1,879	1,866	1,838	-2.10%	-1.61%
415 Hiawatha USD 415	933	882	880	900	889	903	860	892	901	939	934	944	977	993	996	5.62%	6.07%
416 Louisburg USD 416	1,688	1,715	1,749	1,723	1,805	1,839	1,825	1,786	1,795	1,793	1,724	1,714	1,654	1,644	1,615	-0.66%	-9.93%
417 Morris County USD 417	827	811	795	775	787	753	748	760	766	752	746	729	725	743	753	-4.45%	0.13%
418 McPherson USD 418	2,466	2,388	2,387	2,456	2,475	2,479	2,448	2,470	2,502	2,497	2,480	2,482	2,479	2,458	2,465	0.89%	-1.28%
419 Canton-Galva USD 419	419	398	411	403	426	407	415	388	389	357	360	362	357	340	325	-16.20%	-8.96%
420 Osage City USD 420	696	675	668	698	674	633	650	655	670	685	697	690	687	695	677	1.63%	-1.17%
421 Lyndon USD 421	467	450	446	472	454	444	454	425	419	444	443	435	433	439	436	-2.20%	-1.80%
422 Kiowa County USD 422	202	218	213	216	512	535	480	425	444	420	412	423	435	439	463	-17.97%	10.24%
423 Moundridge USD 423	453	432	413	424	440	427	424	434	407	401	409	410	410	415	412	-8.86%	2.74%
426 Pike Valley USD 426	249	262	255	253	242	229	219	233	242	249	234	223	225	231	227	2.89%	-8.84%

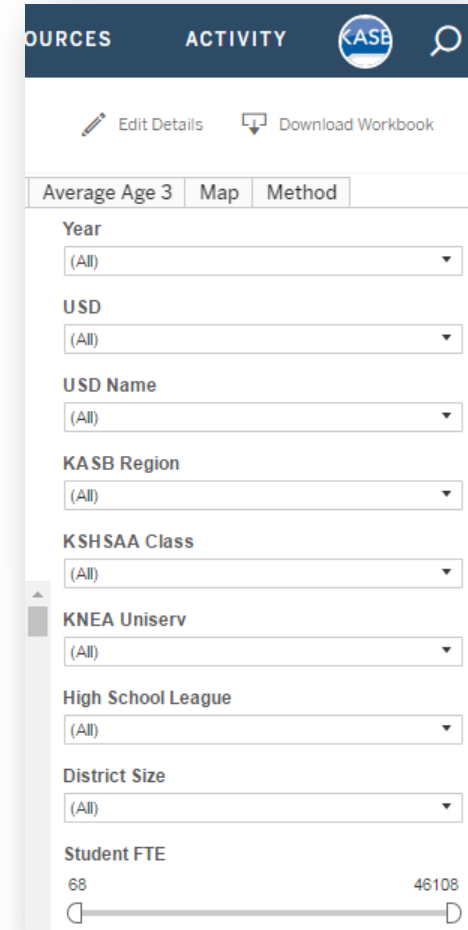
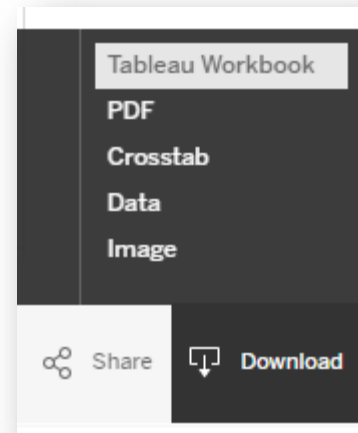
District	Headcounts															Percent Change	
	2007-08	2008-09	2009-10	2010-11	2011-12	2012-13	2013-14	2014-15	2015-16	2016-17	2017-18	2018-19	2019-20	2020-21	2021-22	11-12 to 16-17	16-17 to 21-22
428 Great Bend USD 428	2,970	2,949	2,948	3,188	3,184	3,210	3,209	3,223	3,079	2,978	3,006	3,010	2,988	2,938	2,862	-6.47%	-3.90%
429 Troy USD 429	376	354	363	367	396	353	348	327	344	364	364	348	345	335	355	-8.08%	-2.47%
430 South Brown County USD 430	666	659	635	611	600	583	592	580	574	586	583	576	575	572	561	-2.33%	-4.27%
431 Hoisington USD 431	635	645	696	743	751	736	789	802	801	800	802	834	836	840	829	6.52%	3.63%
432 Victoria USD 432	268	270	269	268	259	261	280	292	299	288	301	308	305	303	300	11.20%	4.17%
434 Santa Fe Trail USD 434	1,170	1,168	1,127	1,112	1,105	1,086	1,043	1,049	1,044	1,091	1,101	1,043	1,054	1,053	1,052	-1.27%	-3.57%
435 Abilene USD 435	1,687	1,621	1,652	1,663	1,639	1,622	1,656	1,687	1,674	1,635	1,647	1,614	1,593	1,580	1,599	-0.24%	-2.20%
436 Caney Valley USD 436	840	887	879	901	892	831	842	787	792	774	752	759	730	702	678	-13.23%	-12.40%
437 Auburn Washburn USD 437	5,578	5,646	5,652	5,830	5,926	6,037	6,078	6,206	6,291	6,335	6,384	6,450	6,499	6,502	6,410	6.90%	1.18%
438 Skyline USD 438	385	372	356	386	393	422	432	421	411	412	432	443	435	435	443	4.83%	7.52%
439 Sedgwick USD 439	550	554	574	557	538	517	516	502	480	479	473	461	445	438	431	-10.97%	-10.02%
440 Halstead USD 440	788	834	816	819	795	795	799	801	777	771	775	754	740	734	716	-3.02%	-7.13%
443 Dodge City USD 443	6,057	5,936	6,181	6,684	6,730	6,880	6,960	7,139	7,160	7,260	7,385	7,360	7,465	7,537	7,560	7.88%	4.13%
444 Little River USD 444	316	332	339	353	357	396	357	343	340	323	333	329	324	320	323	-9.52%	0.00%
445 Coffeyville USD 445	1,909	1,903	1,937	1,930	1,893	1,891	1,844	1,757	1,764	1,778	1,730	1,729	1,683	1,652	1,631	-6.08%	-8.27%
446 Independence USD 446	1,961	2,031	2,026	2,022	2,167	2,210	2,211	2,195	2,168	2,137	2,118	2,156	2,128	2,113	2,093	-1.38%	-2.06%
447 Cherryvale-Thayer USD 447	944	926	948	1,000	997	983	948	940	949	911	908	927	924	934	931	-8.63%	2.20%
448 Inman USD 448	439	468	473	444	454	433	439	441	450	442	452	446	443	437	429	-2.64%	-2.94%
449 Easton USD 449	678	698	723	694	694	677	677	641	621	609	611	588	572	573	561	-12.25%	-7.88%
450 Shawnee Heights USD 450	3,505	3,430	3,496	3,574	3,619	3,596	3,625	3,642	3,556	3,538	3,569	3,536	3,510	3,487	3,461	-2.24%	-2.18%
452 Stanton County USD 452	467	454	494	508	480	471	458	466	451	453	436	428	419	416	407	-5.63%	-10.15%
453 Leavenworth USD 453	4,201	4,069	4,075	3,709	3,755	3,866	3,886	3,919	3,843	3,873	3,901	3,938	3,973	3,938	4,033	3.14%	4.13%
454 Burlingame USD 454	335	345	336	356	335	337	327	316	315	301	296	288	287	291	280	-10.15%	-6.98%
456 Marais des Cygnes Valley USD 456	305	277	279	276	302	315	301	270	249	224	234	227	221	216	211	-25.83%	-5.80%
457 Garden City USD 457	7,265	7,257	7,401	7,590	7,691	7,680	7,640	7,784	7,892	7,775	7,809	7,665	7,635	7,595	7,670	1.09%	-1.35%
458 Basehor-Linwood USD 458	2,181	2,267	2,251	2,233	2,219	2,199	2,348	2,423	2,470	2,549	2,587	2,686	2,742	2,810	2,878	14.87%	12.91%
459 Bucklin USD 459	264	260	260	272	277	275	254	247	249	248	247	240	239	234	228	-10.47%	-8.06%
460 Hesston USD 460	839	853	841	852	838	856	830	830	803	802	802	800	800	772	771	-4.30%	-3.87%
461 Neodesha USD 461	812	772	754	750	776	741	716	731	755	716	702	720	711	708	691	-7.73%	-3.49%
462 Central USD 462	368	349	355	391	360	349	341	339	317	336	350	377	373	378	387	-6.67%	15.18%
463 Udall USD 463	418	426	382	380	392	386	363	353	357	324	321	309	298	295	291	-17.35%	-10.19%
464 Tonganoxie USD 464	1,806	1,850	1,937	1,922	1,887	1,947	1,945	1,986	1,967	1,966	2,014	2,027	2,030	2,047	2,058	4.19%	4.68%
465 Winfield USD 465	2,547	2,602	2,496	2,508	2,540	2,531	2,454	2,418	2,359	2,306	2,290	2,296	2,228	2,227	2,198	-9.21%	-4.68%
466 Scott County USD 466	887	888	892	930	930	963	978	971	1,018	1,023	1,030	1,069	1,080	1,104	1,114	10.00%	8.90%
467 Leoti USD 467	472	468	462	458	451	427	438	449	422	412	401	402	402	409	389	-8.65%	-5.58%
468 Healy USD 468	89	77	101	83	74	78	86	78	77	70	70	81	86	80	82	-5.41%	17.14%
469 Lansing USD 469	2,276	2,370	2,597	2,650	2,646	2,687	2,619	2,553	2,691	2,698	2,725	2,730	2,728	2,778	2,851	1.97%	5.67%
470 Arkansas City USD 470	2,933	2,875	2,797	2,765	2,821	2,774	2,843	2,975	2,876	2,912	2,920	2,960	2,991	2,997	3,022	3.23%	3.78%
471 Dexter USD 471	197	180	162	154	166	170	155	152	150	149	161	181	190	197	195	-10.24%	30.87%
473 Chapman USD 473	973	988	985	978	1,080	1,076	1,067	1,066	1,114	1,094	1,127	1,140	1,162	1,167	1,218	1.30%	11.33%
474 Haviland USD 474	162	142	147	124	125	128	115	115	109	108	107	109	108	109	115	-13.60%	6.48%
475 Geary County Schools USD 475	6,964	7,018	7,645	7,955	8,261	8,430	8,222	8,537	8,018	7,966	8,157	8,243	8,184	8,291	8,272	-3.57%	3.84%
476 Copeland USD 476	124	96	87	109	133	150	120	112	110	99	98	92	92	90	88	-25.56%	-11.11%

District	Headcounts															Percent Change	
	2007-08	2008-09	2009-10	2010-11	2011-12	2012-13	2013-14	2014-15	2015-16	2016-17	2017-18	2018-19	2019-20	2020-21	2021-22	11-12 to 16-17	16-17 to 21-22
477 Ingalls USD 477	273	242	246	253	245	257	247	248	250	221	219	209	210	206	191	-9.80%	-13.57%
479 Crest USD 479	239	231	234	226	214	215	222	209	203	223	228	223	227	231	235	4.21%	5.38%
480 Liberal USD 480	4,585	4,624	4,719	4,798	4,835	4,948	4,995	5,070	5,051	5,001	4,926	4,928	4,824	4,795	4,660	3.43%	-6.82%
481 Rural Vista USD 481	447	440	436	391	386	350	342	308	326	302	311	324	324	333	330	-21.76%	9.27%
482 Dighton USD 482	271	292	274	263	250	269	267	251	245	248	251	237	233	229	233	-0.80%	-6.05%
483 Kismet-Plains USD 483	756	773	777	772	737	732	725	753	729	711	699	700	687	679	659	-3.53%	-7.31%
484 Fredonia USD 484	789	780	766	758	705	733	688	690	695	682	665	671	655	654	643	-3.26%	-5.72%
487 Herington USD 487	555	543	526	535	497	500	492	505	506	493	504	531	520	528	532	-0.80%	7.91%
489 Hays USD 489	3,094	2,953	3,037	3,127	3,108	3,067	3,013	3,070	3,119	3,177	3,219	3,283	3,287	3,287	3,267	2.22%	2.83%
490 El Dorado USD 490	2,115	2,045	2,041	2,046	2,009	2,043	1,998	2,002	1,991	1,968	1,977	1,992	1,999	2,002	2,008	-2.04%	2.03%
491 Eudora USD 491	1,418	1,461	1,500	1,570	1,567	1,597	1,666	1,673	1,743	1,762	1,810	1,806	1,819	1,863	1,881	12.44%	6.75%
492 Flinthills USD 492	284	303	292	266	282	282	295	284	260	273	266	284	278	275	279	-3.19%	2.20%
493 Columbus USD 493	1,226	1,231	1,183	1,085	1,078	1,076	1,053	1,035	995	994	987	992	959	958	957	-7.79%	-3.72%
494 Syracuse USD 494	493	502	523	510	487	493	512	550	544	547	549	541	509	511	514	12.32%	-6.03%
495 Fort Larned USD 495	922	914	945	965	976	959	990	945	923	951	945	925	902	901	888	-2.56%	-6.62%
496 Pawnee Heights USD 496	117	114	107	195	182	196	185	172	164	152	161	211	203	193	188	-16.48%	23.68%
497 Lawrence USD 497	10,623	10,863	10,975	11,374	11,639	11,854	11,967	11,859	12,135	12,029	12,019	12,045	11,886	11,813	11,802	3.35%	-1.89%
498 Valley Heights USD 498	397	426	431	428	441	454	460	466	435	448	460	472	466	461	456	1.59%	1.79%
499 Galena USD 499	788	775	799	850	843	838	871	849	843	853	874	891	864	861	852	1.19%	-0.12%
500 Kansas City USD 500	19,720	19,810	20,112	20,235	20,515	20,947	21,773	22,129	22,065	22,058	22,230	22,626	22,693	22,718	22,678	7.52%	2.81%
501 Topeka USD 501	13,353	13,611	13,812	14,194	14,084	14,021	14,095	14,051	14,169	13,794	13,699	13,713	13,637	13,429	13,182	-2.06%	-4.44%
502 Lewis USD 502	76	76	68	107	113	112	105	112	126	121	114	109	106	101	99	7.08%	-18.18%
503 Parsons USD 503	1,406	1,384	1,262	1,356	1,408	1,403	1,384	1,422	1,414	1,363	1,329	1,350	1,336	1,323	1,308	-3.20%	-4.04%
504 Oswego USD 504	528	495	494	505	499	477	489	493	471	461	461	483	476	476	482	-7.62%	4.56%
505 Chetopa-St. Paul USD 505	560	529	518	488	478	488	491	488	473	447	428	412	399	395	389	-6.49%	-12.98%
506 Labette County USD 506	1,592	1,654	1,682	1,676	1,679	1,660	1,607	1,614	1,608	1,636	1,611	1,592	1,587	1,580	1,579	-2.56%	-3.48%
507 Satanta USD 507	363	368	365	365	320	303	314	316	329	307	313	316	312	317	314	-4.06%	2.28%
508 Baxter Springs USD 508	973	988	986	1,058	1,059	1,062	1,047	1,051	1,063	1,034	1,008	1,003	973	972	938	-2.36%	-9.28%
509 South Haven USD 509	263	251	243	233	218	202	192	203	217	220	213	220	235	247	252	0.92%	14.55%
511 Attica USD 511	145	158	165	175	173	173	179	181	174	186	201	206	213	230	238	7.51%	27.96%
512 Shawnee Mission USD 512	27,831	27,427	27,396	27,876	27,770	27,444	27,419	27,482	27,655	27,521	27,265	26,963	26,850	26,813	26,708	-0.90%	-2.95%
KS State of Kansas	464,118	466,115	471,612	484,056	486,956	489,582	496,903	497,778	496,739	495,356	497,727	500,467	499,288	499,484	498,614	1.73%	0.66%

Appendix B: Running District-Level Projections

The following are the steps to running district-level projections using KASB's online tools.

1. Visit https://public.tableau.com/views/Enrollment_Projections/Overview
2. Select the district (or districts) you wish to include in your projections using the filters on the right side of the Overview page.
3. If you wish to narrow the results by year, you can also do that on the Overview page.
4. Use the tabs across the top to select the graph or table you wish to view.
5. For graphs, you can download by selecting the "Download" menu in the lower right corner of the Tableau tool then selecting either "PDF" or "Image."
6. For tables, you can download the data in a comma-separated file that can be opened in Excel by selecting "Crosstab."
7. For additional map options, visit https://public.tableau.com/views/Enrollment_Projection_Maps/Overview and follow steps 2-5 above.





Kansas Association of School Boards
Serving Educational Leaders, Inspiring Student Success
1420 SW Arrowhead Road * Topeka, KS 66604-4024
785-273-3600
800-432-2471
kasbresearch.org
research@kasb.org