

NC Community Colleges **Creating Success**

**Critical
Success
Factors**

2011

Hope • Opportunity • Jobs

2011 Critical Success Factors Report

June 2011

North
Carolina
Community
College
System

*Dr. R Scott Ralls,
President*

*Kennon Briggs,
Executive VP &
Chief of Staff*

Research &
Performance
Management

*Bill Schneider,
Associate VP*

*Jon Brasfield,
Coordinator*

*Vivian Barrett,
Office Assistant*

CONTENTS

INTRODUCTION

2010-2011 PERFORMANCE SUMMARY

A: PROGRESS OF BASIC SKILLS STUDENTS

CHART A. PROGRESS OF BASIC SKILLS STUDENTS

B: PASSING RATES ON LICENSURE & CERTIFICATION EXAMINATIONS

CHART B1. AGGREGATE INSTITUTIONAL PASS RATE AND NUMBER OF EXAMS WITH A PASS RATE < 70%

CHART B2. FIRST-TIME PASSING RATES ON LICENSING AND CERTIFICATION EXAMINATIONS (AVIATION – GENERAL, AVIATION – AIRFRAME, AVIATION - POWER PLANT, BLET, REAL ESTATE SALES)

CHART B3. FIRST-TIME PASSING RATES ON LICENSING AND CERTIFICATION EXAMINATIONS (COSMETIC ARTS – APPRENTICE, COSMETOLOGY, ESTHETICIAN, INSTRUCTOR, MANICURIST)

CHART B4. FIRST-TIME PASSING RATES ON LICENSING AND CERTIFICATION EXAMINATIONS (DENTAL HYGIENE, OPTICIANRY, NUC. MED. TECH., RADIATION THERAPY, RADIOGRAPHY)

CHART B5. FIRST-TIME PASSING RATES ON LICENSING AND CERTIFICATION EXAMINATIONS (PHYSICAL THERAPIST ASST., PRACTICAL NURSING, REGISTERED NURSING, VET. MED. TECH.)

CHART B6. FIRST-TIME PASSING RATES ON LICENSING AND CERTIFICATION EXAMINATIONS (EMD, EMT, EMT-I, EMT-P)

C: PERFORMANCE OF COLLEGE TRANSFER STUDENTS

CHART C. PERCENT OF COLLEGE TRANSFER STUDENTS WITH A GPA OF ≥ 2.0 AFTER TWO SEMESTERS AT A UNIVERSITY

D. PASSING RATES OF STUDENTS IN DEVELOPMENTAL COURSES

CHART D. PASSING RATES OF STUDENTS IN DEVELOPMENTAL COURSES

E. SUCCESS RATES OF DEVELOPMENTAL STUDENTS IN SUBSEQUENT COLLEGE-LEVEL COURSES

CHART E. PERFORMANCE OF DEVELOPMENTAL STUDENTS IN SUBSEQUENT COLLEGE-LEVEL COURSES

F. SATISFACTION OF PROGRAM COMPLETERS AND NON-COMPLETERS

CHART F. SATISFACTION OF PROGRAM COMPLETERS AND NON-COMPLETERS,

G. CURRICULUM STUDENT RETENTION, GRADUATION, AND TRANSFER

CHART G. CURRICULUM STUDENT RETENTION, GRADUATION AND TRANSFER

H. CLIENT SATISFACTION WITH CUSTOMIZED TRAINING

CHART H. CLIENT SATISFACTION WITH CUSTOMIZED TRAINING

INTRODUCTION

The Critical Success Factors Report is the North Carolina Community College System’s major accountability document. This annual performance report serves to inform colleges and the public on the performance of our 58 community colleges.

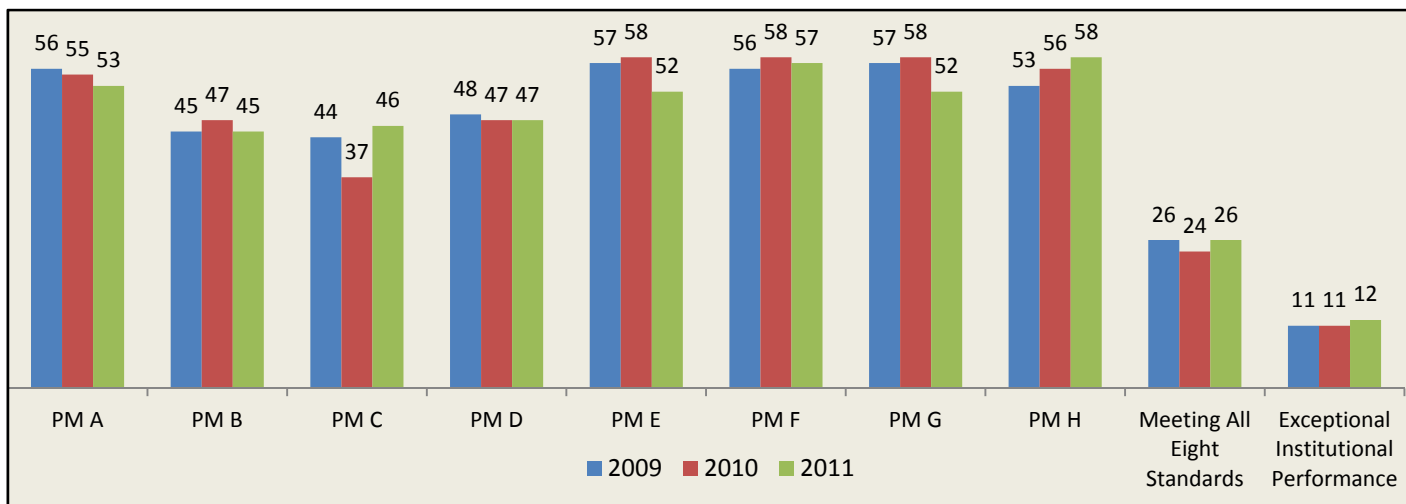
In 1993, the State Board of Community Colleges began monitoring performance data on specific measures to ensure public accountability for programs and services. In 1998, the General Assembly directed the State Board to review past performance measures and define standards to ensure programs and services offered by community colleges in North Carolina were of sufficient quality.

The State Board of Community Colleges and the General Assembly approved twelve performance measures for accountability in 1999. Later in 2007, the General Assembly approved the reduction of performance measures to the current eight:

- A. Progress of Basic Skills Students
- B. Passing Rates on Licensure and Certification Examinations
- C. Performance of College Transfer Students
- D. Passing Rates of Students in Developmental Courses
- E. Success Rates of Developmental Students in Subsequent College-Level Courses
- F. Satisfaction of Program Completers and Non-Completers
- G. Curriculum Student Retention, Graduation, and Transfer
- H. Client Satisfaction with Customized Training

Colleges receive Recognition of Exceptional Institutional Performance if they meet or exceed all eight performance measures, have no licensure exams with a passing rate of less than 70%, and college transfer students perform at a level equal to or above native UNC system students.

The chart below shows by year the number of colleges who have met the standard for the individual performance measures, the number of colleges who have met all eight performance standards, and the number of colleges receiving Recognition of Exceptional Institutional Performance.



In 2010, President Scott Ralls appointed members of a Performance Measures Committee to review the current performance measures and recommend changes to the State Board of Community Colleges. Once approved by the State Board and the General Assembly, these changes will be reflected in the 2013 report.

2010-2011 PERFORMANCE SUMMARY

	A. BASIC SKILLS	B. LICENSURE EXAMS		C. TRANSFER PERFORM	D. DEV GRADES	E. DEV IN CREDIT	F. STUDENT SATISFACTION	G. STUDENT PERSISTENCE	H. TRAINING SATISFACTION	STANDARDS MET
		AGG	<70%							
Standard	75%	80%	0	83%/87%	75%	80%	90%	65%	90%	
System Totals	81%	86%		87%	78%	88%	96%	68%	95%	
Meeting Standard	53	45	34	46/33	47	52	57	52	58	
Alamance CC	84%	88%	1	85%	81%	95%	97%	69%	95%	8
Asheville-Buncombe TCC	81%	89%	0	97%	88%	67%	96%	70%	93%	7
Beaufort County CC	75%	86%	1	91%	90%	89%	100%	66%	94%	8
Bladen CC	83%	81%	1	69%	87%	93%	95%	71%	98%	7
Blue Ridge CC	75%	81%	1	97%	79%	86%	98%	66%	97%	8
Brunswick CC	95%	91%	1	82%	85%	77%	87%	63%	96%	4
Caldwell CC & TI	78%	85%	2	91%	85%	89%	95%	69%	91%	8
Cape Fear CC	76%	96%	0	85%	78%	79%	98%	72%	95%	7
Carteret CC	83%	83%	1	94%	80%	92%	97%	67%	93%	8
Catawba Valley CC	78%	77%	0	92%	78%	94%	96%	70%	96%	7
Central Carolina CC	77%	83%	2	87%	81%	93%	96%	66%	97%	8
Central Piedmont CC	95%	92%	0	88%	74%	86%	97%	64%	91%	6
Cleveland CC	69%	80%	1	88%	82%	88%	95%	64%	92%	6
Coastal Carolina CC	77%	94%	0	90%	85%	90%	98%	69%	95%	8*
College of The Albemarle	81%	74%	1	95%	82%	92%	96%	69%	92%	7
Craven CC	84%	88%	0	93%	74%	88%	91%	66%	97%	7
Davidson County CC	88%	92%	0	89%	80%	80%	97%	72%	93%	8*
Durham TCC	79%	89%	1	89%	72%	87%	94%	66%	94%	7
Edgecombe CC	76%	86%	0	69%	79%	82%	94%	66%	96%	7
Fayetteville TCC	89%	96%	0	85%	74%	85%	93%	66%	92%	7
Forsyth TCC	84%	92%	0	88%	84%	87%	95%	69%	95%	8*
Gaston College	90%	88%	0	85%	83%	90%	95%	67%	97%	8
Guilford TCC	78%	94%	0	85%	86%	84%	95%	68%	94%	8
Halifax CC	86%	76%	1	87%	73%	88%	99%	67%	100%	6
Haywood CC	72%	79%	1	91%	71%	91%	96%	69%	93%	5
Isothermal CC	83%	77%	1	81%	86%	90%	99%	70%	95%	6
James Sprunt CC	69%	88%	0	89%	84%	95%	94%	72%	100%	7
Johnston CC	82%	81%	1	86%	87%	94%	98%	72%	94%	8
Lenoir CC	76%	84%	0	85%	80%	93%	96%	70%	95%	8
Martin CC	81%	71%	0	82%	71%	70%	92%	62%	94%	3
Mayland CC	82%	85%	1	74%	62%	94%	98%	68%	95%	6
McDowell TCC	77%	92%	0	92%	83%	96%	98%	64%	100%	7
Mitchell CC	78%	84%	0	87%	85%	87%	95%	69%	96%	8*
Montgomery CC	75%	83%	0	80%	90%	89%	99%	67%	97%	7
Nash CC	69%	77%	1	93%	97%	91%	98%	67%	96%	6
Pamlico CC	79%	46%	0	77%	77%	82%	99%	72%	99%	6 of 7
Piedmont CC	88%	76%	0	66%	77%	96%	98%	66%	93%	6
Pitt CC	81%	85%	0	85%	79%	89%	98%	73%	95%	8
Randolph CC	76%	87%	0	90%	89%	88%	95%	69%	92%	8*
Richmond CC	76%	97%	0	93%	88%	87%	94%	68%	100%	8*
Roanoke-Chowan CC	76%	72%	1	100%	72%	80%	98%	65%	95%	6
Robeson CC	88%	72%	2	78%	80%	92%	96%	66%	94%	6
Rockingham CC	76%	84%	1	89%	81%	87%	97%	70%	94%	8
Rowan-Cabarrus CC	82%	85%	1	76%	72%	91%	98%	66%	92%	6
Sampson CC	80%	85%	0	96%	84%	89%	100%	70%	93%	8*
Sandhills CC	74%	89%	0	85%	78%	90%	98%	65%	93%	7
South Piedmont CC	94%	86%	0	90%	77%	84%	90%	67%	94%	8*
Southeastern CC	91%	82%	2	73%	75%	77%	97%	67%	94%	6
Southwestern CC	75%	95%	0	94%	85%	86%	98%	71%	94%	8*
Stanly CC	76%	89%	0	89%	88%	94%	99%	69%	93%	8*
Surry CC	85%	93%	0	91%	84%	90%	98%	70%	99%	8*
Tri-County CC	80%	70%	1	86%	77%	77%	99%	65%	94%	6
Vance-Granville CC	78%	87%	0	87%	90%	83%	96%	62%	94%	7
Wake TCC	80%	91%	0	91%	73%	88%	95%	70%	96%	7
Wayne CC	80%	74%	1	87%	86%	91%	99%	69%	95%	7
Western Piedmont CC	77%	84%	0	89%	93%	95%	99%	72%	99%	8*
Wilkes CC	83%	85%	0	86%	81%	90%	95%	69%	90%	8
Wilson TCC	81%	89%	0	84%	77%	85%	97%	66%	97%	8

*Met all measures and exceptional standard on licensure exams and transfer student performance

A: PROGRESS OF BASIC SKILLS STUDENTS

Description

The aggregate percentage of adult literacy students completing a level of literacy, progressing within a level of literacy, or completing a predetermined goal.

Source

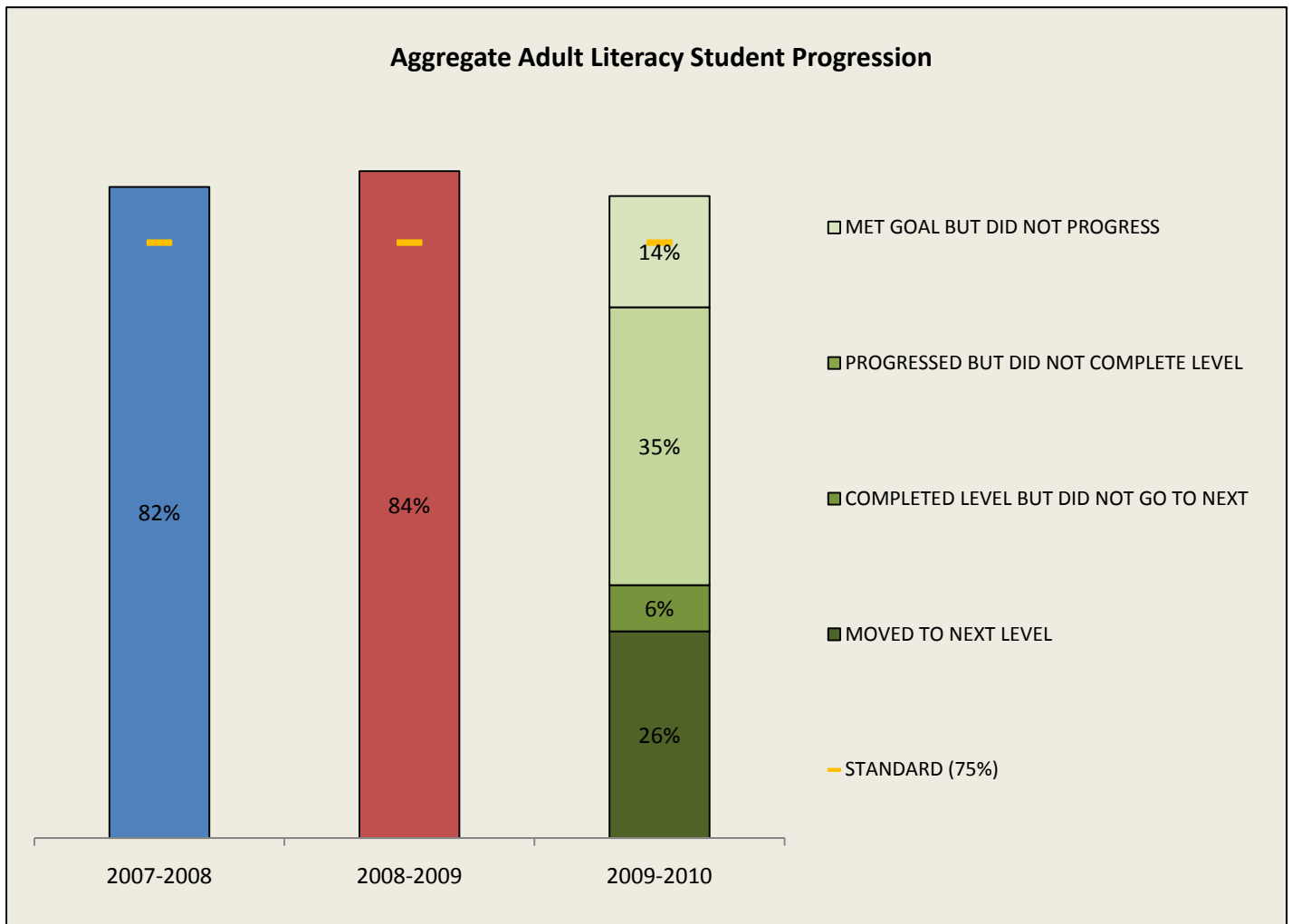
Data is submitted on an annual basis from each college into the Literacy Education Information System which is uploaded to the NCCCS Data Warehouse. This data is extracted from the Data Warehouse's Literacy-College Universe using "Reporting Year" = "2010" and analyzed at the individual student level using the fields "Mover Higher (Y/N)", "Level Completed (Y/N)", "Progressing (Y/N)", and "Goal Completed (Y/N)" to determine student progression.

System Standard

75 % of adult literacy students will complete a level, progress within a level, or complete a predetermined goal.

Results

For 2009-10, 56 community colleges met this standard. The college results ranged from a low of 69% to a high of 95%. The aggregate result for the system was 81%.



IA. PROGRESS OF BASIC SKILLS STUDENTS, 2009-2010

	TOTAL SERVED IN LITERACY	MOVED TO NEXT LEVEL	COMPLETED LEVEL BUT DID NOT GO TO NEXT	PROGRESSED BUT DID NOT COMPLETE LEVEL	MET GOAL BUT DID NOT PROGRESS	DID NOT MEET GOAL	COMPOSITE PROGRESS MEASURE			
							2009-2010 A	2009-2010 B	2008-2009	2007-2008
System Totals	146061	26%	6%	35%	14%	19%	81%	84%	89%	90%
Alamance CC	2894	20%	10%	36%	18%	16%	84%	84%	89%	90%
Asheville-Buncombe TCC	3795	32%	5%	34%	9%	19%	81%	81%	80%	81%
Beaufort County CC	909	29%	3%	39%	4%	25%	75%	75%	76%	75%
Bladen CC	768	23%	4%	40%	16%	17%	83%	83%	89%	76%
Blue Ridge CC	1543	27%	7%	37%	5%	25%	75%	75%	75%	83%
Brunswick CC	1187	22%	8%	39%	26%	5%	95%	95%	97%	90%
Caldwell CC & TI	2513	26%	6%	35%	9%	23%	77%	78%	86%	80%
Cape Fear CC	3862	18%	4%	39%	8%	31%	69%	76%	80%	77%
Carteret CC	795	18%	13%	36%	16%	17%	83%	83%	82%	78%
Catawba Valley CC	3370	29%	8%	32%	9%	22%	78%	78%	80%	87%
Central Carolina CC	4804	30%	6%	26%	8%	29%	71%	77%	82%	85%
Central Piedmont CC	12960	23%	2%	36%	34%	5%	95%	95%	95%	79%
Cleveland CC	893	25%	8%	34%	3%	31%	69%	69%	77%	71%
Coastal Carolina CC	4266	27%	4%	31%	13%	25%	75%	77%	77%	78%
College of The Albemarle	2397	23%	8%	40%	10%	19%	81%	81%	73%	91%
Craven CC	1500	24%	6%	38%	16%	16%	84%	84%	87%	88%
Davidson County CC	3054	36%	3%	30%	18%	12%	88%	88%	97%	95%
Durham TCC	4716	25%	4%	37%	13%	21%	79%	79%	79%	79%
Edgecombe CC	1977	24%	10%	35%	5%	26%	74%	76%	75%	76%
Fayetteville TCC	5731	24%	1%	33%	29%	13%	87%	89%	93%	91%
Forsyth TCC	6471	27%	2%	37%	16%	18%	82%	84%	90%	85%
Gaston College	3545	38%	7%	29%	15%	10%	90%	90%	85%	76%
Guilford TCC	7539	23%	3%	42%	9%	23%	77%	78%	84%	77%
Halifax CC	1332	21%	5%	40%	20%	14%	86%	86%	79%	79%
Haywood CC	1021	15%	6%	45%	5%	29%	71%	72%	81%	79%
Isothermal CC	1623	18%	10%	43%	13%	17%	83%	83%	86%	93%
James Sprunt CC	612	27%	9%	20%	12%	32%	68%	69%	81%	76%
Johnston CC	2068	22%	7%	43%	11%	18%	82%	82%	76%	76%
Lenoir CC	2325	29%	1%	37%	6%	27%	73%	76%	77%	76%
Martin CC	964	22%	6%	44%	10%	19%	81%	81%	80%	88%
Mayland CC	1275	29%	14%	33%	6%	18%	82%	82%	87%	86%
McDowell TCC	711	14%	12%	42%	9%	23%	77%	77%	82%	83%
Mitchell CC	2345	23%	8%	37%	9%	22%	78%	78%	81%	85%
Montgomery CC	576	23%	5%	34%	13%	25%	75%	71%	74%	75%
Nash CC	1396	16%	6%	42%	5%	31%	69%	69%	76%	77%
Pamlico CC	358	21%	9%	38%	11%	21%	79%	79%	80%	76%
Piedmont CC	1147	26%	7%	38%	18%	12%	88%	88%	92%	84%
Pitt CC	2341	30%	3%	38%	10%	20%	80%	81%	83%	75%
Randolph CC	1853	24%	7%	38%	6%	26%	74%	76%	78%	79%
Richmond CC	2247	29%	7%	34%	5%	25%	75%	76%	81%	76%
Roanoke-Chowan CC	654	13%	12%	42%	10%	24%	76%	76%	75%	73%
Robeson CC	2851	30%	2%	40%	17%	12%	88%	88%	84%	82%
Rockingham CC	1359	28%	8%	34%	6%	25%	75%	76%	81%	78%
Rowan-Cabarrus CC	3455	20%	12%	30%	15%	22%	78%	82%	81%	79%
Sampson CC	978	27%	8%	39%	6%	20%	80%	80%	87%	81%
Sandhills CC	1541	19%	9%	27%	7%	38%	62%	74%	80%	82%
South Piedmont CC	2708	35%	10%	27%	22%	7%	93%	94%	97%	90%
Southeastern CC	1368	31%	7%	31%	23%	9%	91%	91%	76%	75%
Southwestern CC	1590	36%	2%	31%	7%	25%	75%	75%	78%	79%
Stanly CC	1804	23%	6%	37%	7%	26%	74%	76%	74%	83%
Surry CC	1776	25%	6%	34%	18%	16%	84%	85%	87%	85%
Tri-County CC	430	17%	16%	40%	8%	20%	80%	80%	80%	79%
Vance-Granville CC	2899	32%	12%	27%	7%	22%	78%	78%	83%	83%
Wake TCC	8019	31%	7%	31%	10%	20%	80%	80%	87%	85%
Wayne CC	2839	34%	3%	33%	10%	20%	80%	80%	81%	82%
Western Piedmont CC	2660	12%	15%	41%	9%	23%	77%	77%	76%	82%
Wilkes CC	1656	27%	4%	39%	13%	17%	83%	83%	88%	87%
Wilson TCC	1792	36%	5%	29%	10%	19%	81%	81%	83%	78%

A - Based on analysis of student progress data in the data warehouse

B - Based on automated reports provided to colleges following data submission

B: PASSING RATES ON LICENSURE & CERTIFICATION EXAMINATIONS

Description

The percentage of first-time test takers passing an examination required for North Carolina licensure or certification prior to practicing the profession. A licensure requirement for an occupation is one that is required by state statute for an individual to work in that occupation. Certification is generally voluntary but may be required by employers or an outside accrediting agency. Purely voluntary examinations are not reported.

Source

The number of first-time test-takers and the number passing were provided to the System Office by agencies issuing the license or certification and validated by the colleges. Depending on the exam, data may be provided on a fiscal or calendar year. The institutional passing rate was calculated by dividing the total number of first-time test takers for all reported examinations by the total number of persons who sat for the exam for the first time. For privacy and statistical validity, no examination data are reported when the number of first-time test takers was fewer than 10.

System Standard

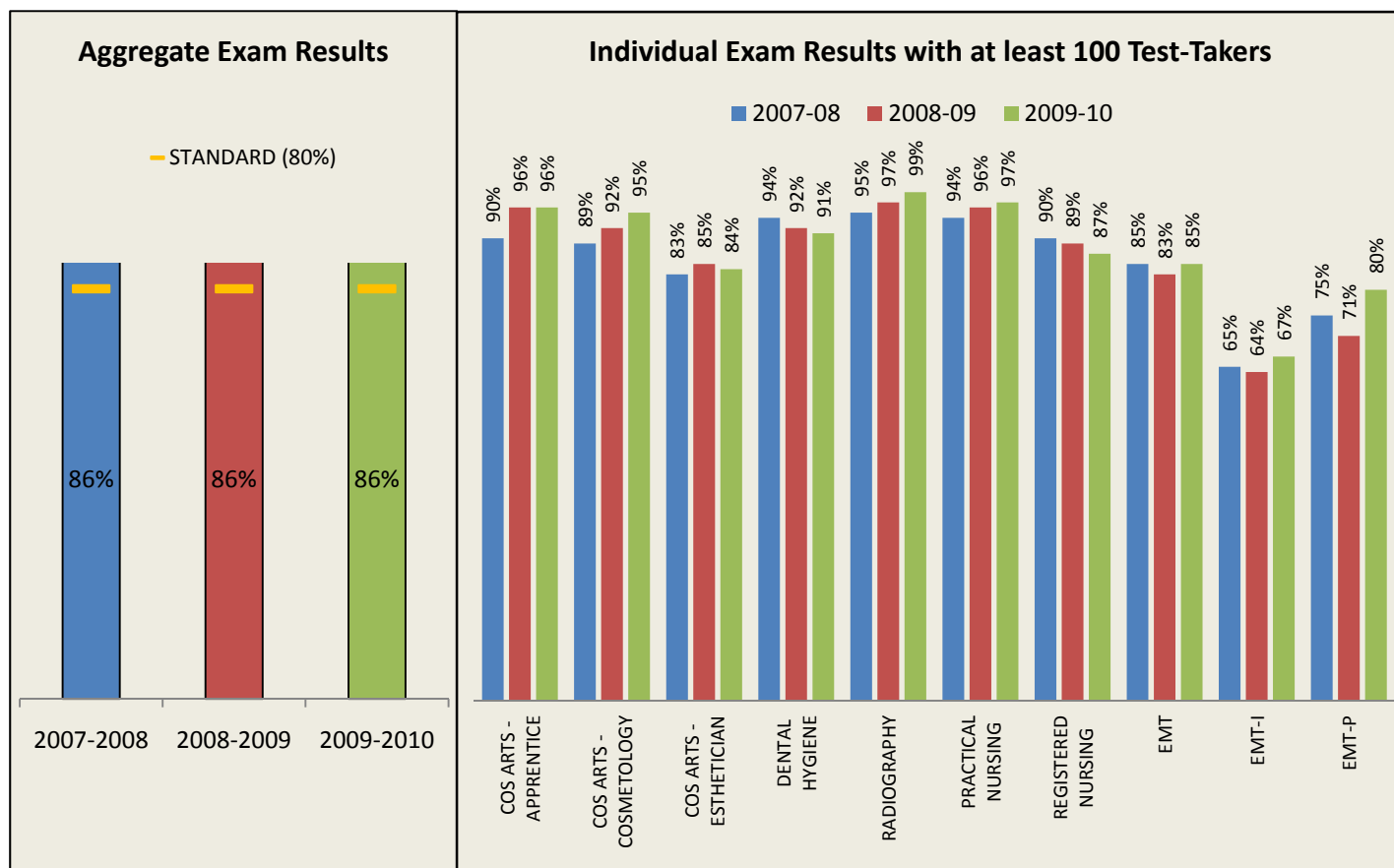
80% of first-time test takers will pass examinations required for North Carolina licensure or certification.

Exceptional Institutional Performance Standard

The college will have no exam with a passing rate less than 70%

Results

For 2009-10, 45 community colleges met this standard. The college results ranged from a low of 46% to a high of 97%. The aggregate result for the system was 86%. In addition, there were 34 colleges with no exam with a passing rate less than 70%.



B1. 2009-2010 AGGREGATE INSTITUTIONAL PASS RATE AND NUMBER OF EXAMS WITH A PASS RATE < 70%

	NUMBER OF	NUMBER	AGGREGATE INSTITUTIONAL PASSING RATE			NUMBER OF EXAMS WITH A RATE <70% *		
	TEST TAKERS	PASSING	2009-2010	2008-2009	2007-2008	2009-2010	2008-2009	2007-2008
System Totals	10006	8643	86%	86%	86%	28	29	35
Alamance CC	138	121	88%	86%	80%	1	1	0
Asheville-Buncombe TCC	353	314	89%	93%	95%	0	0	0
Beaufort County CC	114	98	86%	85%	77%	1	1	1
Bladen CC	83	67	81%	83%	90%	1	0	0
Blue Ridge CC	169	137	81%	82%	90%	1	0	0
Brunswick CC	79	72	91%	85%	74%	1	0	3
Caldwell CC & TI	229	194	85%	84%	79%	2	0	2
Cape Fear CC	338	323	96%	95%	93%	0	0	0
Carteret CC	116	96	83%	79%	84%	1	1	1
Catawba Valley CC	225	173	77%	71%	84%	0	3	1
Central Carolina CC	253	209	83%	86%	83%	2	1	1
Central Piedmont CC	378	349	92%	91%	93%	0	0	0
Cleveland CC	175	140	80%	78%	74%	1	2	3
Coastal Carolina CC	227	214	94%	88%	90%	0	0	0
College of The Albemarle	232	172	74%	84%	80%	1	1	2
Craven CC	198	174	88%	83%	91%	0	0	0
Davidson County CC	228	210	92%	88%	83%	0	1	0
Durham TCC	326	290	89%	85%	88%	1	1	1
Edgecombe CC	44	38	86%	88%	80%	0	0	1
Fayetteville TCC	300	288	96%	94%	90%	0	0	0
Forsyth TCC	395	365	92%	89%	93%	0	0	0
Gaston College	249	220	88%	89%	88%	0	0	1
Guilford TCC	443	418	94%	89%	87%	0	0	0
Halifax CC	92	70	76%	70%	67%	1	2	1
Haywood CC	72	58	81%	86%	79%	1	0	1
Isothermal CC	115	89	77%	79%	82%	1	2	1
James Sprunt CC	82	72	88%	88%	85%	0	1	1
Johnston CC	248	200	81%	92%	92%	1	0	0
Lenoir CC	308	259	84%	87%	90%	0	0	0
Martin CC	41	29	71%	87%	66%	0	0	1
Mayland CC	94	80	85%	84%	78%	1	0	1
McDowell TCC	90	83	92%	88%	93%	0	0	0
Mitchell CC	143	120	84%	84%	85%	0	1	0
Montgomery CC	41	34	83%	84%	84%	0	0	1
Nash CC	69	53	77%	86%	78%	1	1	0
Pamlico CC	13	6	46%	75%	53%	0	0	1
Piedmont CC	107	81	76%	89%	96%	0	0	0
Pitt CC	181	153	85%	86%	86%	0	1	0
Randolph CC	90	78	87%	88%	86%	0	0	0
Richmond CC	69	67	97%	86%	88%	0	1	0
Roanoke-Chowan CC	64	46	72%	83%	95%	1	0	0
Robeson CC	139	100	72%	77%	78%	2	2	0
Rockingham CC	98	82	84%	92%	89%	1	0	0
Rowan-Cabarrus CC	342	289	85%	81%	80%	1	1	2
Sampson CC	105	89	85%	87%	91%	0	0	1
Sandhills CC	167	148	89%	87%	88%	0	0	0
South Piedmont CC	110	95	86%	69%	82%	0	2	0
Southeastern CC	142	117	82%	78%	78%	2	1	1
Southwestern CC	102	97	95%	88%	89%	0	0	1
Stanly CC	97	86	89%	79%	81%	0	0	1
Surry CC	167	155	93%	92%	76%	0	0	1
Tri-County CC	60	42	70%	72%	80%	1	0	1
Vance-Granville CC	209	181	87%	84%	89%	0	1	1
Wake TCC	383	350	91%	92%	90%	0	0	0
Wayne CC	137	101	74%	90%	86%	1	0	1
Western Piedmont CC	73	61	84%	91%	92%	0	0	0
Wilkes CC	79	67	85%	82%	81%	0	1	0
Wilson CC	82	73	89%	81%	88%	0	0	0

*Excludes Real Estate exam, BLET exam, and exams with less than 10 test-takers

Note: Real Estate and BLET exams are not included in the aggregate results

B2. FIRST-TIME PASSING RATES ON LICENSING AND CERTIFICATION EXAMINATIONS, 2009-2010

	AVIATION - GENERAL				AVIATION - AIRFRAME				AVIATION - POWER				BLET				REAL ESTATE SALES			
	TEST	% PASSING			TEST	% PASSING			TEST	% PASSING			TEST	% PASSING			TEST	% PASSING		
	09-10	09-10	08-09	07-08	09-10	09-10	08-09	07-08	09-10	09-10	08-09	07-08	09-10	09-10	08-09	07-08	09-10	09-10	08-09	07-08
System Totals	47	98%	98%	100%	45	98%	100%	100%	50	100%	100%	100%	1816	87%	87%	86%	265	80%	72%	71%
Alamance CC													12	83%	81%	88%			*	*
Asheville-Buncombe TCC													78	92%	98%	99%	19	84%	85%	67%
Beaufort County CC													29	79%	88%	79%	1	*	*	
Bladen CC																				*
Blue Ridge CC													37	89%	86%	94%	2	*	*	*
Brunswick CC													45	76%	80%	69%	16	88%	74%	66%
Caldwell CC & TI													33	70%	86%	65%				
Cape Fear CC													85	84%	85%	89%	12	83%	*	90%
Carteret CC													34	85%	76%	77%	15	33%	46%	76%
Catawba Valley CC													34	88%	67%	44%			*	*
Central Carolina CC													42	93%	91%	84%	10	70%	*	30%
Central Piedmont CC													25	100%	95%	94%	62	95%	90%	85%
Cleveland CC													37	89%	63%	69%	1	*	*	*
Coastal Carolina CC													31	87%	74%	84%				
College of The Albemarle													27	100%	96%	92%			*	*
Craven CC	29	100%	100%		29	100%	100%	*	11	100%	*	*	25	88%	87%	96%	8	*	45%	71%
Davidson County CC													67	79%	83%	83%			*	*
Durham TCC													18	89%	88%	*	37	84%	73%	81%
Edgecombe CC																	5	*	*	*
Fayetteville TCC													31	84%	100%	93%				*
Forsyth TCC													46	91%	87%	91%	2	*	*	*
Gaston College													42	90%	87%	89%	1	*	*	71%
Guilford TCC	16	100%	96%	100%	15	100%	100%	100%	37	100%	100%	100%	39	92%	93%	94%	35	86%	71%	71%
Halifax CC													15	73%	67%	66%			*	*
Haywood CC													18	72%	85%	80%				
Isothermal CC													21	76%	96%	71%			*	
James Sprunt CC															94%	100%				
Johnston CC													32	94%	94%	96%	2	*	*	*
Lenoir CC													19	89%	89%	88%	2	*	*	
Martin CC													4	*	*	*	1	*		
Mayland CC													14	86%	92%	*				*
McDowell TCC													9	*	93%	100%				
Mitchell CC													52	88%	88%	74%	5	*	81%	77%
Montgomery CC													16	94%	71%	69%				
Nash CC													22	95%	100%	96%			*	*
Pamlico CC																				
Piedmont CC																				
Pitt CC													61	93%	90%	92%	4	*	*	*
Randolph CC													31	84%	87%	86%	7	*	*	*
Richmond CC													14	100%						
Roanoke-Chowan CC																				
Robeson CC													45	84%	85%	80%	3	*	*	*
Rockingham CC													58	72%	95%	83%				
Rowan-Cabarrus CC													62	84%	95%	94%	1	*	*	100%
Sampson CC													35	91%	91%	*				
Sandhills CC													61	89%	88%	93%				
South Piedmont CC													46	83%	89%	87%				*
Southeastern CC													20	60%	82%	*			*	*
Southwestern CC													29	93%	94%	88%	7	*	*	87%
Stanly CC													46	80%	82%	60%			*	91%
Surry CC													25	92%	90%	88%			*	9%
Tri-County CC																	2	*	*	*
Vance-Granville CC													35	91%	95%	90%				*
Wake TCC													58	91%	88%	90%			*	65%
Wayne CC	2	*			1	*			2	*			33	97%	94%	89%			*	*
Western Piedmont CC													54	87%	98%	96%				
Wilkes CC													44	95%	94%	91%	5	*	*	*
Wilson CC													20	75%	89%	90%				

*Less than 10 test takers

B3. FIRST-TIME PASSING RATES ON LICENSING AND CERTIFICATION EXAMINATIONS, 2010

	COSMETIC ARTS																			
	APPRENTICE				COSMETOLOGY				ESTHETICIAN				INSTRUCTOR				MANICURIST			
	TEST 2010	% PASSING			TEST 2010	% PASSING			TEST 2010	% PASSING			TEST 2010	% PASSING			TEST 2010	% PASSING		
	2010	2009	2008		2010	2009	2008		2010	2009	2008		2010	2009	2008		2010	2009	2008	
System Totals	146	96%	96%	90%	389	95%	92%	89%	123	84%	85%	83%	27	81%	78%	50%	52	79%	89%	84%
Alamance CC	9	*	91%		7	*	*													
Asheville-Buncombe TCC	3	*			6	*			19	79%	*	*					10	70%	*	*
Beaufort County CC	1	*			11	100%	*				*								*	
Bladen CC				*	3	*	*	*												
Blue Ridge CC	10	100%	100%	100%	5	*	*	*	3	*	*	100%			*		2	*	*	*
Brunswick CC	1	*	*		6	*	*	*			*	*				*			*	
Caldwell CC & TI	6	*	*	100%	8	*	*						1	*		*	4	*		*
Cape Fear CC	11	100%	100%	94%	9	*	100%	*	8	*	*	81%	2	*		*	3	*	*	*
Carteret CC	2	*	*	*	5	*	*	*	4	*	*	100%			*				*	
Catawba Valley CC			*		2	*	*													
Central Carolina CC	12	100%	93%	86%	33	91%	*	100%	14	79%	83%	81%	6	*	*	*	1	*	92%	*
Central Piedmont CC			*				*				*									
Cleveland CC	3	*	*	93%	7	*	*	*	1	*	*	*				*				
Coastal Carolina CC					20	95%	94%	85%					2	*			1	*	*	*
College of The Albemarle	1	*	95%	94%			*	*											*	
Craven CC	4	*	92%	94%	4	*	*	*									4	*	*	*
Davidson County CC	2	*	*		23	96%	100%	90%	7	*	*	80%	1	*						
Durham TCC									6	*										
Edgecombe CC					6	*	*	*	7	*	*		1	*					*	
Fayetteville TCC					13	100%		83%	3	*										
Forsyth TCC																				
Gaston College			*				*													
Guilford TCC	4	*	*	*	15	93%	91%	100%								*				
Halifax CC			*	*	3	*	*	*												
Haywood CC					11	100%	*	64%	1	*	*	*								*
Isothermal CC	3	*	*	*	6	*	100%	*							*	*	1	*		*
James Sprunt CC	5	*	*	*	6	*	*	*					1	*	*	*	2	*		
Johnston CC	5	*	100%	*	8	*	*	*					2	*		*				
Lenoir CC	11	91%	92%	100%	4	*	*	*			*	92%	1	*			5	*	*	*
Martin CC				*	5	*	*		3	*										*
Mayland CC	3	*			4	*	80%	*				*					2	*	*	*
McDowell TCC	1	*	*	*	7	*	*	*	4	*	*	*				*			*	
Mitchell CC					8	*	100%	95%	5	*	*	*			*	*			*	*
Montgomery CC																				
Nash CC	4	*			2	*	*													
Pamlico CC			*	*	1	*	*	*												
Piedmont CC					4	*							1	*						
Pitt CC																				
Randolph CC	3	*																		
Richmond CC																				
Roanoke-Chowan CC							*										5	*	*	*
Robeson CC	1	*	*	*	7	*	*	*									11	73%	*	
Rockingham CC	2	*	*	100%	3	*	*	*												
Rowan-Cabarrus CC	15	93%		100%	40	98%	96%	93%	15	100%	89%	*			*	*			79%	82%
Sampson CC	1	*	*	*	4	*	*	*					2	*						*
Sandhills CC	7	*	*	*	5	*	*	*	7	*	*	*	2	*		*				*
South Piedmont CC																				
Southeastern CC	6	*	*	*	4	*		*	1	*		*	1	*	*	*			*	
Southwestern CC					18	94%	79%	94%												*
Stanly CC	2	*	100%	94%	7	*	85%	91%	1	*	*	*	2	*	*				*	*
Surry CC					16	100%	100%	100%								*				
Tri-County CC					6	*	*	91%	4	*		*	1	*		80%	1	*	*	*
Vance-Granville CC	8	*	*	91%	22	95%	*	80%					1	*		*				
Wake TCC									10	90%										
Wayne CC																				
Western Piedmont CC																				
Wilkes CC					5	*														
Wilson CC																				

*Less than 10 test takers

B4. FIRST-TIME PASSING RATES ON LICENSING AND CERTIFICATION EXAMINATIONS, 2009-2010

	DENTAL HYGIENE				OPTICIANRY				NUC. MED. TECH.				RADIATION THERAPY				RADIOGRAPHY			
	TEST	% PASSING			TEST	% PASSING			TEST	% PASSING			TEST	% PASSING			TEST	% PASSING		
	09-10	09-10	08-09	07-08	09-10	09-10	08-09	07-08	09-10	09-10	08-09	07-08	09-10	09-10	08-09	07-08	09-10	09-10	08-09	07-08
System Totals	217	91%	92%	94%	7	*	*	*	27	81%	85%	92%	33	76%	97%	83%	341	99%	97%	95%
Alamance CC																				
Asheville-Buncombe TCC	20	90%	94%	100%													19	100%	100%	100%
Beaufort County CC																				
Bladen CC																				
Blue Ridge CC																				
Brunswick CC																				
Caldwell CC & TI									11	64%	83%	*					6	*	*	*
Cape Fear CC	11	100%	100%	*													22	100%	93%	90%
Carteret CC																	16	100%	100%	100%
Catawba Valley CC	16	94%	95%	*													7	*	*	91%
Central Carolina CC	12	100%	100%																	
Central Piedmont CC	23	96%	85%	100%																
Cleveland CC																	7	*	100%	93%
Coastal Carolina CC	20	90%	90%	95%																
College of The Albemarle																				
Craven CC																				
Davidson County CC																				
Durham TCC					7	*	*	*												
Edgecombe CC																	21	100%	100%	100%
Fayetteville TCC	20	100%	89%	87%					3	*	*	*					22	100%	100%	100%
Forsyth TCC	7	*	*	100%									6	*	*	*	32	100%	100%	91%
Gaston College																				
Guilford TCC	31	97%	89%	87%																
Halifax CC	16	75%	93%																	
Haywood CC																				
Isothermal CC																				
James Sprunt CC																				
Johnston CC											*	*					27	100%	100%	100%
Lenoir CC																	8	*	*	
Martin CC																				
Mayland CC																				
McDowell TCC																				
Mitchell CC																				
Montgomery CC																				
Nash CC																				
Pamlico CC																				
Piedmont CC																				
Pitt CC									13	92%	*	86%	18	72%	100%	84%	17	94%	100%	100%
Randolph CC																	13	100%	89%	100%
Richmond CC																				
Roanoke-Chowan CC																				
Robeson CC																	8	*	*	
Rockingham CC																				
Rowan-Cabarrus CC																	18	100%	94%	92%
Sampson CC																				
Sandhills CC																	12	100%	100%	100%
South Piedmont CC													9	*	*					
Southeastern CC																				
Southwestern CC																	12	100%	*	86%
Stanly CC																	16	94%	86%	95%
Surry CC																				
Tri-County CC																				
Vance-Granville CC																	31	97%	100%	100%
Wake TCC	19	79%	100%	100%													27	100%	100%	93%
Wayne CC	22	82%	95%	91%																
Western Piedmont CC																				
Wilkes CC																				
Wilson CC																				

*Less than 10 test takers

B5. FIRST-TIME PASSING RATES ON LICENSING AND CERTIFICATION EXAMINATIONS, 2010

	PHYSICAL THERAPIST				PRACTICAL NURSING				REGISTERED NURSING				VET. MED. TECH.			
	TEST	% PASSING			TEST	% PASSING			TEST	% PASSING			TEST	% PASSING		
	2010	2010	2009	2008	2010	2010	2009	2008	2010	2010	2009	2008	2010	2010	2009	2008
System Totals	98	84%	89%	83%	893	97%	96%	94%	2263	87%	89%	90%	48	96%	100%	98%
Alamance CC									35	83%	89%	95%				
Asheville-Buncombe TCC					37	97%	100%	95%	85	89%	88%	95%	14	93%	*	*
Beaufort County CC					20	100%	100%	95%	46	89%	88%	92%				
Bladen CC					11	100%	100%	86%	9	*	*	*				
Blue Ridge CC									45	71%	80%	87%				
Brunswick CC					19	100%	100%	100%	11	100%	94%	60%				
Caldwell CC & TI	15	73%	100%	89%					33	91%	85%	88%				
Cape Fear CC					19	100%	100%	100%	57	98%	100%	100%				
Carteret CC					7	*	93%	93%	11	100%	100%	*				
Catawba Valley CC									70	73%	78%	88%				
Central Carolina CC					31	87%	97%	93%	19	100%	93%	100%	19	100%	100%	100%
Central Piedmont CC	12	75%	82%	90%					84	86%	89%	92%				
Cleveland CC					12	100%	*									
Coastal Carolina CC					19	95%	100%	100%	27	93%	94%	92%				
College of The Albemarle					13	92%	100%	100%	31	97%	100%	92%				
Craven CC					13	100%	100%	85%	55	84%	81%	92%				
Davidson County CC					20	100%	78%		48	92%	87%	86%				
Durham TCC					16	94%	*	100%	51	92%	93%	95%				
Edgecombe CC																
Fayetteville TCC	11	91%	75%	90%	36	92%	89%	89%	71	90%	98%	88%				
Forsyth TCC					58	97%	85%	94%	124	94%	83%	92%				
Gaston College					38	97%	100%	97%	63	86%	91%	95%	15	93%	100%	92%
Guilford TCC	11	91%	100%	100%	21	100%	92%	96%	101	89%	87%	91%				
Halifax CC					20	90%			25	84%						
Haywood CC									25	68%	91%	86%				
Isothermal CC					39	97%	96%	97%								
James Sprunt CC					18	100%	100%	89%	15	93%	94%	64%				
Johnston CC					2	*	100%	100%	64	86%	100%	100%				
Lenoir CC					8	*	*	*	22	77%	90%	97%				
Martin CC	11	82%	*	80%												
Mayland CC					17	100%	100%	89%	24	96%	84%	94%				
McDowell TCC					36	100%	100%	88%								
Mitchell CC									40	90%	94%	95%				
Montgomery CC					30	83%	93%	90%								
Nash CC	12	83%	100%	70%												
Pamlico CC																
Piedmont CC									27	81%	88%	95%				
Pitt CC									56	93%	86%	77%				
Randolph CC									19	95%	100%	95%				
Richmond CC					16	94%	94%	100%	41	98%	91%	88%				
Roanoke-Chowan CC					16	100%	100%	94%	24	50%	92%	100%				
Robeson CC									25	92%	67%	83%				
Rockingham CC					34	97%	96%	93%	19	89%	87%	100%				
Rowan-Cabarrus CC					14	100%	100%	80%	25	84%	84%	100%				
Sampson CC					31	97%	100%	100%	25	88%	82%	100%				
Sandhills CC					25	100%	96%	100%	47	87%	89%	84%				
South Piedmont CC					18	100%	94%	81%	19	84%	53%	95%				
Southeastern CC					37	100%	97%		29	100%	100%	100%				
Southwestern CC	11	100%	100%	67%	6	*	100%	*	22	86%	90%	96%				
Stanly CC									34	100%	70%	91%				
Surry CC	15	80%			23	96%	100%	89%	60	88%	95%	73%				
Tri-County CC									18	67%	75%	90%				
Vance-Granville CC					31	100%	86%	97%	42	79%	88%	100%				
Wake TCC									75	89%	92%	89%				
Wayne CC					13	100%	100%	100%	39	90%	95%	81%				
Western Piedmont CC									21	86%	85%	88%				
Wilkes CC									39	90%	64%	85%				
Wilson CC					11	100%	100%		21	86%	91%					
Foothills Nursing Consortium**									57	95%	100%	83%				
NEWH Nursing Consortium***					58	98%	97%	95%	122	75%	90%	91%				
Region A Nursing Consortium****									66	73%	86%	91%				

*Less than 10 test takers ** Cleveland, Isothermal, McDowell ***Nash, Edgecomb, Wilson, Halifax ****Haywood, Southwestern, Tri-County

B6. FIRST-TIME PASSING RATES ON LICENSING AND CERTIFICATION EXAMINATIONS, 2010

	EMD				EMT				EMT-I				EMT-P			
	TEST		% PASSING		TEST		% PASSING		TEST		% PASSING		TEST		% PASSING	
	2010	2009	2009	2008	2010	2010	2009	2008	2010	2010	2009	2008	2010	2010	2009	2008
System Totals	51	88%	*	81%	3989	85%	83%	85%	559	67%	64%	65%	601	80%	71%	75%
Alamance CC					69	97%	93%	84%	11	45%	73%		7	*	50%	72%
Asheville-Buncombe TCC					84	88%	95%	96%	38	82%	84%	*	18	89%	*	80%
Beaufort County CC					36	69%	88%	47%			42%					
Bladen CC					28	79%	*	100%	16	81%	*	93%	16	63%	*	75%
Blue Ridge CC					73	92%	75%	84%	23	61%	*	80%	8	*	*	*
Brunswick CC					29	93%	84%	96%	13	62%	80%	*		*	36%	
Caldwell CC & TI					109	87%	81%	66%	10	60%	*	*	26	85%	77%	*
Cape Fear CC					172	95%	94%	92%	15	87%	*	*	9	*	89%	*
Carteret CC					52	75%	81%	95%	11	64%	53%	60%	8	*	*	*
Catawba Valley CC					106	75%	60%	85%	15	80%	55%		9	*	*	*
Central Carolina CC	6	*			88	67%	76%	67%	12	67%	*	*		36%	*	
Central Piedmont CC					259	95%	94%	97%								
Cleveland CC					103	81%	71%	90%	16	44%	59%	50%	26	88%	100%	52%
Coastal Carolina CC					112	97%	91%	92%	13	92%	*	*	13	85%	*	79%
College of The Albemarle					117	79%	79%	84%	55	40%	62%	41%	15	100%		65%
Craven CC					37	73%	75%	89%	7	*	*	*	5	*	*	
Davidson County CC					93	95%	99%	92%	16	94%	*	*	18	83%	50%	70%
Durham TCC					208	94%	87%	91%	22	73%	94%	64%	16	56%	67%	83%
Edgecombe CC					9	*	93%	*				30%				
Fayetteville TCC				100%	74	99%	90%	91%			*	81%	47	100%	100%	96%
Forsyth TCC					160	88%	95%	93%	5	*	*	*	3	*	*	*
Gaston College					117	88%	85%	88%	4	*	*		12	92%	70%	68%
Guilford TCC					171	94%	88%	85%	9	*	80%	*	12	100%		*
Halifax CC					17	71%	69%	72%	11	36%	*			*		
Haywood CC					21	86%	82%	79%	14	79%		*				
Isothermal CC					61	67%	64%	68%			53%		5	*	*	
James Sprunt CC					33	76%	69%	100%			*		2	*	*	
Johnston CC					97	73%	81%	83%	21	67%			22	77%	93%	92%
Lenoir CC					138	85%	93%	92%	59	71%	77%	83%	52	90%	72%	72%
Martin CC					15	73%	93%	66%	7	*						
Mayland CC					28	75%	82%	84%			*	52%	16	63%		
McDowell TCC	7	*			35	80%	83%	90%			*	*		*		
Mitchell CC					69	80%	69%	85%	14	71%		100%	7	*		
Montgomery CC					7	*			4	*						*
Nash CC				*	32	88%	81%	81%			*		19	47%	64%	*
Pamlico CC					6	*	71%	40%	6	*	*					
Piedmont CC					68	71%	*	95%					7	*		
Pitt CC					58	81%	47%	91%	1	*	*	*	18	72%		
Randolph CC					47	81%	84%	82%	8	*	*	*				*
Richmond CC				*	12	100%	80%				64%	*				*
Roanoke-Chowan CC					17	82%	73%	*			*		2	*		
Robeson CC					61	62%	78%	79%	14	43%	65%	*	12	92%	*	*
Rockingham CC					35	69%	88%	81%					5	*	*	*
Rowan-Cabarrus CC					148	85%	70%	65%	11	73%	65%	61%	56	61%	72%	75%
Sampson CC				*	26	73%	85%	92%	3	*	*		13	85%		63%
Sandhills CC					50	82%	80%	81%	1	*	*	*	11	91%	*	*
South Piedmont CC					46	83%	66%	78%	9	*	*	*	9	*	*	83%
Southeastern CC					41	63%	60%	67%	17	65%	*	*	6	*	*	
Southwestern CC					23	96%	89%	92%			*	73%	10	100%		*
Stanly CC					30	83%	76%	85%			*		5	*		*
Surry CC					41	98%	95%	80%				57%	12	100%	100%	
Tri-County CC					20	75%	71%	68%	6	*	*	*	4	*	*	*
Vance-Granville CC					51	76%	83%	95%			31%	37%	23	78%	70%	
Wake TCC					214	92%	96%	96%	24	92%	79%	71%	14	100%		90%
Wayne CC					51	57%	83%	80%	7	*				*		61%
Western Piedmont CC	38	84%	*	86%	14	79%	95%	100%						*		
Wilkes CC					24	75%	81%	72%	11	82%	*			*		
Wilson CC					47	87%	71%	86%			*		3	*	*	

*Less than 10 test takers

C: PERFORMANCE OF COLLEGE TRANSFER STUDENTS

Description

Of students transferring to a university with an associate degree or 24 articulated college transfer credit hours, the percentage who have a GPA equal or greater than 2.00 after two semesters at the university.

Source

Lists of students enrolled in 2008-2009 receiving an associate degree during that academic year and those who had accumulated at least 24 articulated college transfer credit hours data were sent to UNCGA. These lists were matched against fall 2009 and spring 2010 UNC system student records to determine transfer enrollment at a North Carolina public university and first year academic performance. Detailed reports by community college can be accessed at <http://www.northcarolina.edu/ira/ir/analytics/tsp.htm>. Two reports for each college were accessed from this site for this measure: *First-Year UNC Academic Performance of 2008-09 Community College Associate Degree Recipients* and *First-Year UNC Academic Performance of 2008-09 Community College Students with at Least 24 Semester Hours of Community College Coursework*. Data from *D.4. Percent of Students with End-of-Year GPA=>2.00* in these reports were combined to determine the overall percentage of transfers with a GPA equal or greater than 2.00 after two semesters at the university. Community colleges are allowed to supplement this data with acquired performance data from private and out-of-state institutions that is consistent with the methodology employed by the UNCGA in calculating the data for transfer to public universities.

System Standard

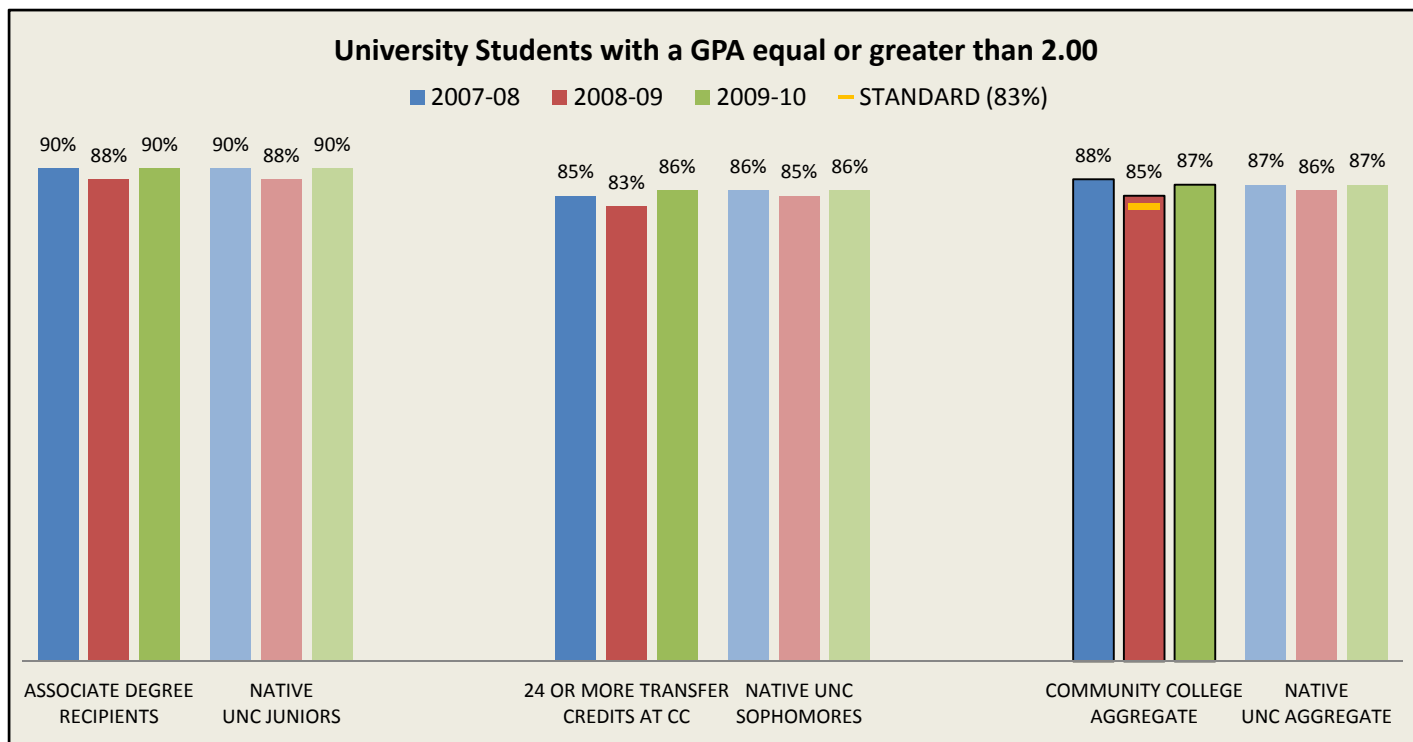
83% of students transferring to a university with an associate degree or 24 articulated college transfer credit hours will have a GPA equal to or greater than 2.00 after two semesters at the university.

Exceptional Institutional Performance Standard

Meet or exceed the aggregate performance of native UNC sophomores and juniors, which is 87% for this year.

Results

For 2009-10, 46 community colleges met this standard. The college results ranged from a low of 66% to a high of 100%. The aggregate result for the system was 87%. In addition, there were 33 colleges meeting or exceeding the aggregate performance of native UNC sophomores and juniors (87%).



C. PERCENT OF 2009-10 COLLEGE TRANSFER STUDENTS WITH A GPA OF > = 2.0 AFTER TWO SEMESTERS AT A UNIVERSITY

	24 OR MORE SEMESTER HOURS		ASSOCIATE DEGREE RECIPIENT		2009-2010 TOTAL		% ≥ 2.00	
	Students	% ≥ 2.00	Students	% ≥ 2.00	Students	% ≥ 2.00	2008-2009*	2007-2008*
System Totals	6213	86%	2835	90%	9048	87%	85%	88%
Alamance CC	119	85%	64	86%	183	85%	81%	94%
Asheville-Buncombe TCC	150	96%	87	99%	237	97%	92%	95%
Beaufort County CC	39	90%	16	94%	55	91%	83%	70%
Bladen CC	49	71%	10	60%	59	69%	81%	78%
Blue Ridge CC	46	96%	21	100%	67	97%	89%	88%
Brunswick CC **	42	81%	25	84%	67	82%	80%	87%
Caldwell CC & TI	180	89%	55	95%	235	91%	84%	90%
Cape Fear CC **	456	84%	267	87%	723	85%	83%	86%
Carteret CC	41	93%	22	95%	63	94%	91%	90%
Catawba Valley CC	129	90%	59	97%	188	92%	93%	88%
Central Carolina CC **	90	83%	55	93%	145	87%	87%	87%
Central Piedmont CC **	880	87%	399	90%	1279	88%	87%	90%
Cleveland CC	57	86%	15	93%	72	88%	81%	77%
Coastal Carolina CC	150	90%	46	89%	196	90%	89%	92%
College of The Albemarle	67	94%	25	96%	92	95%	85%	87%
Craven CC	80	95%	33	88%	113	93%	86%	86%
Davidson County CC **	74	85%	31	97%	105	89%	83%	90%
Durham TCC	133	90%	50	86%	183	89%	89%	96%
Edgecombe CC **	17	65%	9	***	26	69%	77%	71%
Fayetteville TCC **	219	87%	138	81%	357	85%	82%	88%
Forsyth TCC	182	85%	74	96%	256	88%	89%	82%
Gaston College **	149	83%	73	88%	222	85%	89%	89%
Guilford TCC	348	83%	133	91%	481	85%	82%	83%
Halifax CC	21	90%	10	80%	31	87%	100%	72%
Haywood CC	37	89%	16	94%	53	91%	78%	94%
Isothermal CC	35	86%	18	72%	53	81%	89%	96%
James Sprunt CC	25	92%	12	83%	37	89%	100%	77%
Johnston CC	100	85%	24	92%	124	86%	79%	85%
Lenoir CC **	92	84%	40	88%	132	85%	85%	84%
Martin CC	6	***	5	***	11	82%	***	***
Mayland CC	15	73%	8	***	23	74%	75%	93%
McDowell TCC **	23	91%	1	***	24	92%	78%	95%
Mitchell CC **	77	83%	59	92%	136	87%	81%	87%
Montgomery CC	5	***	0	***	<10 Students	***	***	***
Nash CC **	52	94%	19	89%	71	93%	84%	93%
Pamlico CC	<5 Students	***	<5 Students	***	<10 Students	***	***	***
Piedmont CC	36	69%	17	59%	53	66%	90%	84%
Pitt CC	225	84%	67	88%	292	85%	87%	87%
Randolph CC	41	88%	21	95%	62	90%	90%	93%
Richmond CC	51	90%	36	97%	87	93%	87%	74%
Roanoke-Chowan CC	5	***	5	***	10	100%	***	83%
Robeson CC	48	75%	35	83%	83	78%	76%	85%
Rockingham CC **	46	89%	30	90%	76	89%	95%	85%
Rowan-Cabarrus CC	148	75%	63	79%	211	76%	84%	86%
Sampson CC **	18	100%	9	***	27	96%	77%	74%
Sandhills CC	124	81%	44	93%	168	85%	79%	83%
South Piedmont CC	24	88%	7	***	31	90%	92%	56%
Southeastern CC	84	73%	22	73%	106	73%	93%	86%
Southwestern CC	71	93%	50	96%	121	94%	96%	95%
Stanly CC **	46	89%	29	90%	75	89%	75%	84%
Surry CC **	116	89%	80	95%	196	91%	90%	87%
Tri-County CC	33	85%	17	88%	50	86%	94%	94%
Vance-Granville CC	57	88%	26	85%	83	87%	89%	86%
Wake TCC	571	90%	166	94%	737	91%	84%	89%
Wayne CC **	103	87%	72	88%	175	87%	87%	92%
Western Piedmont CC **	89	87%	79	92%	168	89%	88%	89%
Wilkes CC	80	85%	34	88%	114	86%	92%	89%
Wilson CC	12	83%	7	***	19	84%	75%	53%

* Did not include AAS students prior to 2008-09

** Includes data from private colleges and universities.

***Less than 10 students

D: PASSING RATES OF STUDENTS IN DEVELOPMENTAL COURSES

Description

The percentage of developmental course completers in English, reading or mathematics completing with a grade of "C" or better.

Source

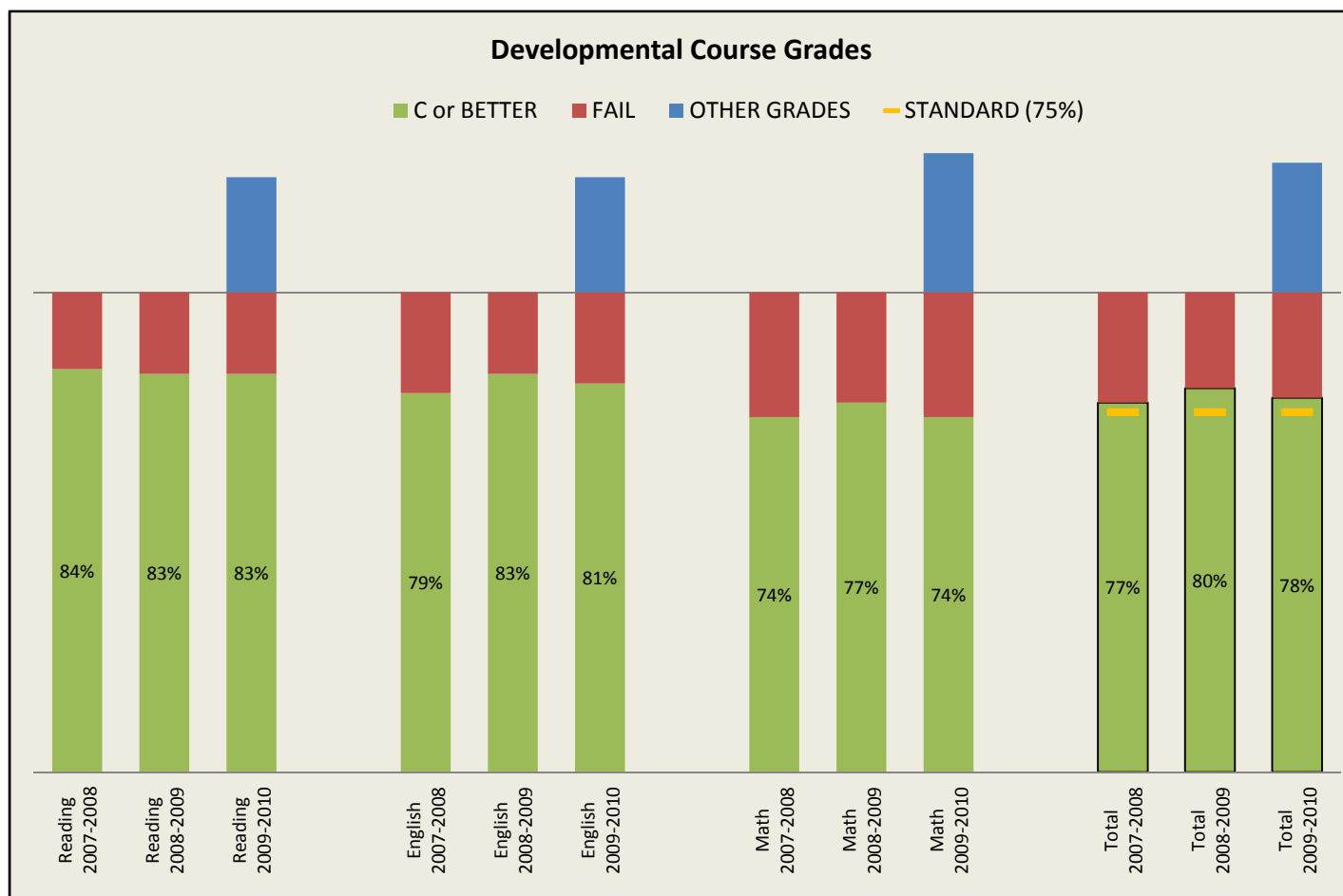
At the end of each semester, colleges submit a Curriculum Registration, Progress, Financial Aid Report (CRPFAR) data file which is uploaded to the NCCCS Data Warehouse. Grade data in the Data Warehouse's Curriculum Student Info II Universe was extracted by filtering "Course Prefix" equal to "ENG;MAT;RED", "Course Number" less than "100", and Reporting Term equal to "200903;201001;201002" and analyzed based on data in the fields "Letter Grade" and "College Letter Grade". While all grades were extracted for analysis, only grades that equated to "A", "B", "C", "D", or "F" were counted as completers. Other grades include those that equate to withdraw, incomplete, audit, transfer credit, etc. Results were shared and verified with institutions to ensure proper grade mapping.

Standard

75% of developmental course completers in English, reading or mathematics will complete with a grade "C" or better.

Results

For 2009-10, 47 community colleges met this standard. The college results ranged from a low of 62% to a high of 97%. The aggregate result for the system was 78%.



D. PASSING RATES OF STUDENTS IN DEVELOPMENTAL COURSES, 2009-2010

	READING					ENGLISH					MATH					TOTAL				
	ATTEMPT	COMPLET	% COMPLETERS PASSING			ATTEMPT	COMPLET	% COMPLETERS PASSING			ATTEMPT	COMPLET	% COMPLETERS PASSING			ATTEMPT	COMPLET	% COMPLETERS PASSING		
			09-10	08-09	07-08			09-10	08-09	07-08			09-10	08-09	07-08			09-10	08-09	07-08
System Totals	33196	26786	83%	83%	84%	73506	59124	81%	83%	79%	107617	83208	74%	77%	74%	214319	169118	78%	80%	77%
Alamance CC	1054	844	91%			1355	1125	83%	89%	88%	2839	2344	76%	79%	80%	5248	4313	81%	83%	83%
Asheville-Buncombe TCC	717	591	94%	95%	97%	1520	1128	93%	93%	92%	1774	1270	82%	88%	90%	4011	2989	88%	91%	92%
Beaufort County CC	400	260	94%	93%	91%	485	329	94%	94%	98%	687	401	85%	78%	77%	1572	990	90%	86%	87%
Bladen CC	280	220	93%	92%	95%	590	414	91%	90%	92%	1080	807	83%	83%	88%	1950	1441	87%	87%	90%
Blue Ridge CC	236	232	88%	83%	79%	391	385	84%	88%	83%	811	805	74%	70%	73%	1438	1422	79%	77%	76%
Brunswick CC	10	8	*	85%		420	328	81%	72%	71%	831	661	87%	79%	84%	1261	997	85%	77%	80%
Caldwell CC & TI	640	490	86%	87%	95%	1126	924	91%	90%	80%	1795	1436	82%	83%	76%	3561	2850	85%	85%	81%
Cape Fear CC						1999	1629	79%	78%	76%	3385	2737	77%	82%	83%	5384	4366	78%	80%	80%
Carteret CC				81%		617	499	70%	67%	59%	846	712	87%	90%	91%	1463	1211	80%	84%	83%
Catawba Valley CC	943	792	83%	80%	78%	1739	1449	85%	83%	84%	2784	2294	73%	71%	71%	5466	4535	78%	76%	75%
Central Carolina CC	804	596	89%	93%	89%	830	634	83%	86%	86%	1459	850	79%	74%	71%	3093	2080	83%	82%	79%
Central Piedmont CC	2865	2637	76%	77%	80%	7324	6477	80%	77%	81%	8313	7209	67%	64%	71%	18502	16323	74%	70%	76%
Cleveland CC	489	408	86%	79%	89%	1222	970	82%	87%	92%	1694	1391	81%	83%	81%	3405	2769	82%	83%	84%
Coastal Carolina CC	519	442	88%	87%	89%	705	599	90%	87%	86%	2692	2230	83%	80%	80%	3916	3271	85%	82%	82%
College of The Albemarle	362	287	77%	90%	86%	648	536	89%	94%	92%	1454	1113	81%	81%	83%	2464	1936	82%	85%	85%
Craven CC				83%		1053	944	80%	73%	65%	1671	1411	70%	71%	75%	2724	2355	74%	72%	72%
Davidson County CC	389	333	82%	77%	82%	858	707	86%	79%	68%	1314	996	74%	73%	63%	2561	2036	80%	75%	67%
Durham TCC	1081	718	72%	78%	67%	2135	1506	74%	81%	78%	2957	1997	70%	69%	64%	6173	4221	72%	74%	68%
Edgecombe CC	1141	854	82%	71%	88%	1833	1350	81%	78%	73%	1890	1369	74%	71%	73%	4864	3573	79%	74%	77%
Fayetteville TCC	2592	1996	72%	77%	72%	3964	3133	79%	73%	69%	5673	4298	71%	66%	62%	12229	9427	74%	70%	66%
Forsyth TCC	1860	1471	85%	83%	89%	2831	2239	84%	82%	79%	3449	2646	83%	84%	80%	8140	6356	84%	83%	82%
Gaston College	868	725	88%	82%	80%	1799	1522	82%	83%	76%	3046	2501	81%	81%	82%	5713	4748	83%	82%	80%
Guilford TCC	3807	2569	90%	75%	90%	6659	4591	87%	77%	86%	7713	4465	84%	78%	81%	18179	11625	86%	77%	84%
Halifax CC						1192	887	81%	87%	86%	955	724	62%	59%	64%	2147	1611	73%	69%	71%
Haywood CC	186	138	92%	98%	87%	267	206	77%	80%	52%	445	311	57%	82%	56%	898	655	71%	85%	60%
Isothermal CC	257	208	97%	90%	90%	808	643	90%	91%	88%	1415	850	80%	79%	80%	2480	1701	86%	84%	83%
James Sprunt CC	357	308	91%	92%	97%	444	370	86%	82%	87%	729	576	80%	81%	83%	1530	1254	84%	84%	87%
Johnston CC	882	666	84%	86%	88%	1332	1032	90%	72%	72%	1030	735	85%	68%	68%	3244	2433	87%	74%	74%
Lenoir CC	639	485	83%	83%	86%	1337	934	78%	82%	81%	1639	1199	80%	80%	83%	3615	2618	80%	81%	83%
Martin CC	160	154	79%	99%	92%	165	149	65%	68%	61%	348	312	71%	80%	89%	673	615	71%	83%	79%
Mayland CC	97	88	56%	59%	82%	193	176	77%	81%	91%	271	242	54%	71%	78%	561	506	62%	72%	82%
McDowell TCC	49	42	69%	80%	97%	357	299	82%	95%	96%	633	473	85%	90%	94%	1039	814	83%	91%	95%
Mitchell CC				87%		1002	835	86%	83%	88%	1516	1218	85%	81%	86%	2518	2053	85%	82%	87%
Montgomery CC	102	72	89%	68%	68%	153	115	93%	81%	75%	250	241	90%	78%	96%	505	428	90%	77%	85%
Nash CC	343	230	97%	81%	98%	653	423	99%	80%	76%	1695	830	97%	70%	71%	2691	1483	97%	74%	75%
Pamlico CC				97%		70	65	80%	82%	82%	98	92	75%	67%	70%	168	157	77%	73%	92%
Piedmont CC	308	269	84%	83%	97%	715	617	80%	75%	80%	967	787	72%	75%	79%	1990	1673	77%	76%	83%
Pitt CC						2863	2321	90%	91%	91%	3517	2692	70%	69%	68%	6380	5013	79%	77%	75%
Randolph CC	261	216	98%	93%	90%	462	413	88%	90%	93%	1209	870	87%	95%	93%	1932	1499	89%	93%	93%
Richmond CC	639	536	94%	88%	88%	870	687	87%	83%	89%	851	672	85%	90%	89%	2360	1895	88%	88%	89%
Roanoke-Chowan CC	202	176	81%	85%	80%	450	383	68%	72%	75%	405	358	73%	81%	65%	1057	917	72%	79%	71%
Robeson CC	965	700	86%	84%	78%	1563	1132	86%	90%	85%	1824	1224	71%	68%	84%	4352	3056	80%	78%	73%
Rockingham CC	335	253	86%	78%	77%	659	517	87%	91%	84%	1584	1214	78%	83%	83%	2578	1984	81%	84%	82%
Rowan-Cabarrus CC	594	520	86%	79%	82%	1362	1092	79%	74%	82%	4257	3141	67%	74%	78%	6213	4753	72%	75%	80%
Sampson CC	220	183	93%	80%	92%	573	500	93%	92%	90%	756	596	74%	73%	73%	1549	1279	84%	80%	81%
Sandhills CC				85%		1407	1000	84%	79%	81%	1748	1194	73%	77%	77%	3155	2194	78%	78%	80%
South Piedmont CC	540	503	80%	80%	79%	530	492	71%	71%	76%	949	879	78%	83%	82%	2019	1874	77%	79%	80%
Southeastern CC	911	650	84%	93%	79%	1069	694	75%	85%	74%	1461	916	76%	81%	74%	3441	2260	78%	86%	76%
Southwestern CC	236	181	82%	82%	98%	651	503	83%	79%	75%	636	512	88%	85%	89%	1523	1196	85%	83%	87%
Stanly CC						504	377	93%	87%	86%	962	684	85%	88%	92%	1466	1061	88%	88%	90%
Surry CC	408	352	93%	95%	98%	570	468	67%	70%	71%	968	729	90%	91%	84%	1946	1549	84%	86%	83%
Tri-County CC	1	1	*			198	187	78%	85%	94%	280	258	77%	94%	94%	479	446	77%	90%	94%
Vance-Granville CC	421	290	94%	85%	84%	1326	842	93%	83%	74%	1455	1043	87%	85%	81%	3202	2175	90%	84%	79%
Wake TCC	1255	1043	84%	84%	88%	3508	2651	74%	72%	77%	6913	4922	71%	71%	72%	11676	8616	73%	73%	76%
Wayne CC	549	419	92%	92%	86%	1288	988	93%	95%	94%	1710	1160	79%	83%	85%	3547	2567	86%	88%	88%
Western Piedmont CC	514	420	99%	91%	100%	1140	912	98%	92%	84%	1602	1186	87%	78%	53%	3256	2518	93%	84%	67%
Wilkes CC	298	213	82%	84%	84%	936	727	87%	89%	86%	1297	900	77%	77%	78%	2531	1840	81%	81%	81%
Wilson CC	423	351	85%	83%	90%	820	622	75%	79%	80%	1126	864	75%	70%	69%	2369	1837	77%	75%	76%

*Less than 10 students

E: SUCCESS RATE OF DEVELOPMENTAL STUDENTS IN SUBSEQUENT COLLEGE-LEVEL COURSES

Description

Among developmental completers subsequently completing a college level English or mathematics course, the percentage passing the college level English or mathematics course with a grade of "D" or better. Specifically, the performance of those who took developmental English and/or reading courses and subsequently took college-level English courses was assessed. Likewise, the performance of those who took developmental math courses and then took college-level math courses was also assessed.

Source

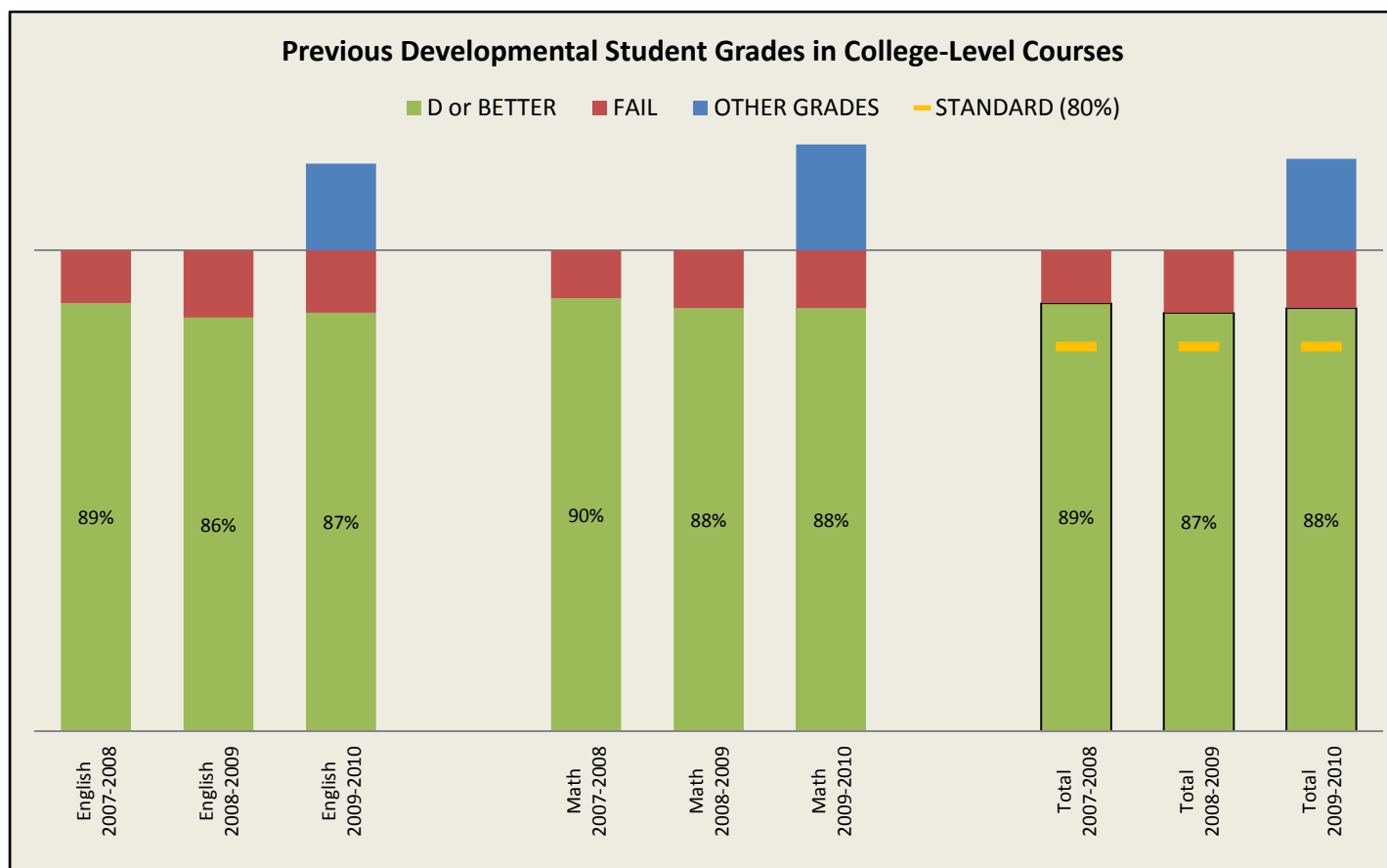
At the end of each semester, colleges submit a Curriculum Registration, Progress, Financial Aid Report (CRPFAR) data file which is uploaded to the NCCCS Data Warehouse. Grade data in the Data Warehouse's Curriculum Student Info II Universe was extracted by filtering "Course Prefix" equal to "ENG;MAT", "Course Number" less than or equal to "100", and Reporting Term equal to "200903;201001;201002" and analyzed based on data in the fields "Letter Grade" and "College Letter Grade". While all grades were extracted for analysis, only grades that equated to "A", "B", "C", "D", or "F" were counted as completers. These grades were matched to students who had previously taken developmental English, Reading, and/or Math courses.

Standard

80% of college level English or mathematics course completers with previous developmental coursework will complete the college level English or mathematics course with a grade of "D" or better.

Results

For 2009-10, 52 community colleges met this standard. The college results ranged from a low of 67% to a high of 96%. The aggregate result for the system was 88%.



E. PERFORMANCE OF DEVELOPMENTAL STUDENTS IN SUBSEQUENT COLLEGE-LEVEL COURSES, 2009-2010

	ENGLISH						MATH						TOTAL					
	ATTEMPT	COMPLET	% COMPLETERS PASSING			ATTEMPT	COMPLET	% COMPLETERS PASSING			ATTEMPT	COMPLET	% COMPLETERS PASSING					
			09-10	08-09	07-08			09-10	08-09	07-08			09-10	08-09	07-08			
System Totals	28515	24098	87%	86%	89%	16251	13373	88%	88%	90%	45176	37862	88%	87%	89%			
Alamance CC	507	424	96%	97%	98%	556	426	93%	96%	96%	1063	850	95%	96%	97%			
Asheville-Buncombe TCC	651	500	60%	72%	82%	331	242	81%	88%	88%	982	742	67%	80%	86%			
Beaufort County CC	213	168	85%	85%	83%	117	92	96%	90%	83%	330	260	89%	87%	83%			
Bladen CC	229	196	92%	93%	98%	147	112	96%	98%	95%	376	308	93%	96%	97%			
Blue Ridge CC	181	177	92%	86%	88%	142	140	79%	87%	94%	323	317	86%	87%	91%			
Brunswick CC	98	90	74%	77%	90%	112	93	78%	85%	80%	210	183	77%	82%	83%			
Caldwell CC & TI	590	479	88%	92%	90%	288	236	92%	92%	94%	878	715	89%	92%	92%			
Cape Fear CC	671	611	78%	79%	79%	570	481	79%	83%	86%	1241	1092	79%	81%	81%			
Carteret CC	138	118	90%	87%	81%	108	80	96%	92%	89%	246	198	92%	90%	86%			
Catawba Valley CC	744	645	98%	88%	87%	474	410	88%	89%	90%	1218	1055	94%	89%	89%			
Central Carolina CC	425	342	92%	90%	94%	150	134	97%	92%	96%	575	476	93%	91%	95%			
Central Piedmont CC	3214	3068	87%	89%	91%	1445	1339	84%	86%	91%	4659	4407	86%	88%	91%			
Cleveland CC	363	313	85%	83%	80%	253	207	92%	97%	97%	616	520	88%	91%	90%			
Coastal Carolina CC	379	294	91%	92%	97%	504	427	90%	88%	90%	883	721	90%	89%	93%			
College of The Albemarle	352	272	89%	93%	90%	213	174	98%	99%	96%	565	446	92%	96%	93%			
Craven CC	281	239	82%	85%	83%	272	218	94%	93%	89%	553	457	88%	91%	87%			
Davidson County CC	330	315	76%	83%	80%	194	184	87%	85%	89%	524	499	80%	84%	85%			
Durham TCC	712	580	88%	95%	93%	305	233	86%	94%	89%	1017	813	87%	95%	91%			
Edgecombe CC	590	484	84%	83%	86%	196	144	74%	81%	80%	786	628	82%	82%	84%			
Fayetteville TCC	1387	1147	86%	79%	76%	642	515	85%	88%	89%	2029	1662	85%	83%	81%			
Forsyth TCC	1103	890	89%	86%	91%	613	416	84%	80%	84%	1716	1306	87%	83%	88%			
Gaston College	883	776	89%	83%	81%	527	424	91%	89%	89%	1410	1200	90%	86%	85%			
Guilford TCC	2157	1838	87%	83%	87%	1046	845	79%	81%	81%	3203	2683	84%	82%	85%			
Halifax CC	289	259	87%	88%	90%	99	85	91%	84%	86%	388	344	88%	87%	88%			
Haywood CC	128	106	91%	86%	90%	90	75	91%	83%	91%	218	181	91%	85%	91%			
Isothermal CC	474	415	86%	82%	83%	233	197	97%	92%	94%	707	612	90%	87%	89%			
James Sprunt CC	211	193	95%	89%	94%	123	104	93%	93%	95%	334	297	95%	91%	95%			
Johnston CC	428	415	94%	92%	97%	165	164	95%	79%	98%	593	579	94%	87%	97%			
Lenoir CC	650	521	97%	87%	96%	214	153	81%	87%	97%	864	674	93%	87%	96%			
Martin CC	60	47	60%	80%	71%	37	33	85%	91%	81%	97	80	70%	84%	74%			
Mayland CC	78	76	95%	87%	86%	28	21	90%	91%	93%	106	97	94%	89%	89%			
McDowell TCC	131	119	94%	96%	100%	180	158	98%	93%	100%	311	277	96%	94%	100%			
Mitchell CC	224	170	86%	81%	85%	168	139	89%	86%	90%	392	309	87%	83%	89%			
Montgomery CC	70	64	95%	88%	98%	60	50	80%	95%	92%	130	114	89%	91%	95%			
Nash CC	257	179	85%	87%	86%	275	244	95%	92%	89%	532	423	91%	90%	87%			
Pamlico CC	17	16	88%	*	95%	12	12	75%	*	94%	29	28	82%	86%	95%			
Piedmont CC	256	232	97%	86%	96%	157	138	94%	86%	93%	413	370	96%	86%	95%			
Pitt CC	1040	827	89%	93%	92%	582	466	91%	89%	89%	1622	1293	89%	91%	90%			
Randolph CC	233	217	90%	86%	80%	256	220	86%	93%	92%	489	437	88%	90%	87%			
Richmond CC	400	308	86%	92%	92%	132	105	89%	91%	95%	532	413	87%	92%	93%			
Roanoke-Chowan CC	165	153	77%	75%	79%	48	48	90%	91%	87%	213	201	80%	81%	82%			
Robeson CC	846	665	92%	95%	93%	274	234	91%	92%	85%	1120	899	92%	94%	90%			
Rockingham CC	293	240	80%	86%	80%	277	237	94%	97%	98%	570	477	87%	94%	92%			
Rowan-Cabarrus CC	636	548	89%	83%	83%	551	465	93%	91%	87%	1187	1013	91%	86%	84%			
Sampson CC	279	227	91%	94%	97%	107	84	86%	96%	95%	386	311	89%	95%	96%			
Sandhills CC	378	292	91%	87%	89%	220	164	89%	76%	82%	598	456	90%	83%	86%			
South Piedmont CC	316	282	86%	83%	82%	113	90	79%	86%	82%	429	372	84%	84%	82%			
Southeastern CC	438	334	73%	90%	88%	128	116	88%	94%	91%	566	450	77%	91%	89%			
Southwestern CC	261	227	85%	83%	86%	194	164	87%	79%	82%	455	391	86%	81%	85%			
Stanly CC	128	102	89%	96%	96%	158	137	97%	97%	98%	286	239	94%	96%	97%			
Surry CC	290	255	92%	90%	85%	212	157	87%	93%	88%	502	412	90%	92%	87%			
Tri-County CC	80	75	80%	86%	80%	85	79	75%	87%	96%	165	154	77%	86%	89%			
Vance-Granville CC	485	401	80%	86%	84%	200	132	92%	94%	98%	685	533	83%	89%	90%			
Wake TCC	1085	876	86%	78%	83%	919	739	90%	89%	91%	2004	1615	88%	84%	87%			
Wayne CC	584	436	92%	89%	92%	227	142	89%	86%	91%	811	578	91%	88%	92%			
Western Piedmont CC	713	600	96%	87%	98%	270	229	94%	93%	98%	983	829	95%	89%	98%			
Wilkes CC	360	256	84%	89%	84%	180	158	98%	96%	95%	540	414	90%	92%	89%			
Wilson CC	312	263	83%	84%	82%	204	189	87%	90%	92%	516	452	85%	88%	87%			

F: SATISFACTION OF PROGRAM COMPLETERS AND NON-COMPLETERS

Description

The percentage of graduates and early-leavers “very satisfied” or “satisfied” with the overall quality of the college.

Source

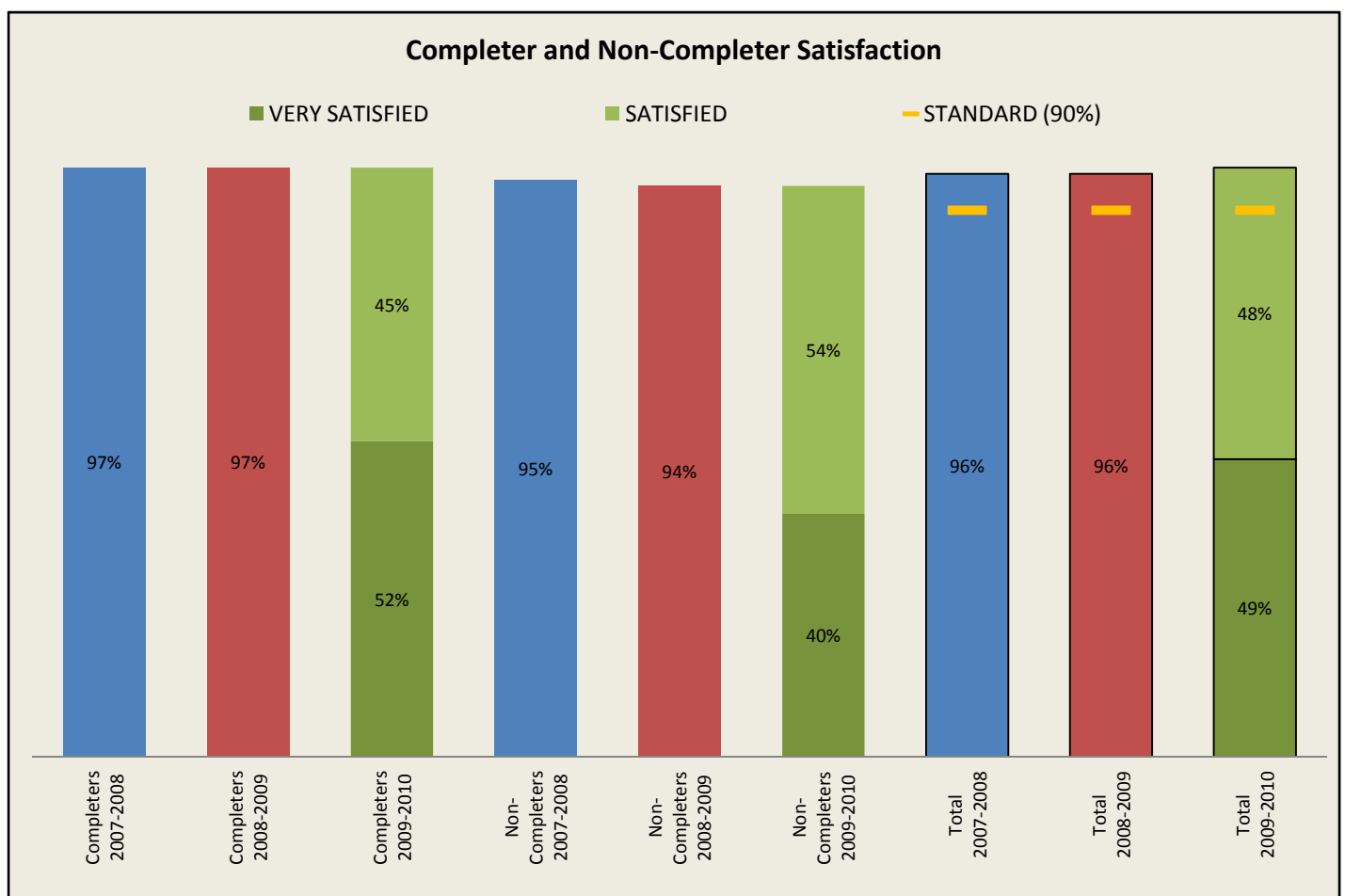
Data was collected from a Completer Survey and a Non-Completer Survey that were developed and administered at the individual colleges. Many of the questions included on the surveys are required by the System Office, including a question on the “Overall quality of the college” with satisfaction options of “very satisfied”, “satisfied”, “dissatisfied”, and “very dissatisfied”. Completer Surveys were administered to students graduating in the 2009-2010 academic year. Non-Completer Surveys were administered to credential-seeking students in Fall 2009 who were not enrolled in Fall 2010 and had not graduated. Colleges are required to report a statistically valid response rate. The overall satisfaction rates were calculated by dividing the total number of respondents “very satisfied” or “satisfied” with the “Overall quality of the college” by the total number of question responses.

Performance Standard

90% of exiting students will be “very satisfied” or “satisfied” with the overall quality of the college.

Results

For 2009-10, 57 community colleges met this standard. The college results ranged from a low of 87% to a high of 100%. The aggregate result for the system was 96%.



F. SATISFACTION OF PROGRAM COMPLETERS AND NON-COMPLETERS, 2009-2010

	COMPLETERS							NON-COMPLETERS							TOTAL						
	STUDENTS	SURVEYS	% VERY SATISFIED	% SATISFIED	% SATISFIED OR VERY SATISFIED			STUDENTS	SURVEYS	% VERY SATISFIED	% SATISFIED	% SATISFIED OR VERY SATISFIED			STUDENTS	SURVEYS	% VERY SATISFIED	% SATISFIED	% SATISFIED OR VERY SATISFIED		
					09-10	08-09	07-08					09-10	08-09	07-08					09-10	08-09	07-08
System Totals	30451	17622	52%	45%	98%	97%	97%	70392	7212	40%	54%	93%	94%	95%	100843	24834	49%	48%	96%	96%	96%
Alamance CC	664	347	53%	45%	98%	100%	100%	1624	171	48%	48%	96%	93%	95%	2288	518	51%	46%	97%	98%	98%
Asheville-Buncombe TCC	1017	577	48%	50%	98%	97%	99%	1789	276	42%	50%	92%	95%	93%	2806	853	46%	50%	96%	96%	97%
Beaufort County CC	212	166	61%	39%	100%	100%	98%	145	27	35%	65%	100%	93%	92%	357	193	57%	43%	100%	99%	97%
Bladen CC	101	101	49%	51%	100%	97%	94%	610	61	50%	37%	87%	95%	94%	711	162	49%	46%	95%	96%	94%
Blue Ridge CC	166	143	41%	59%	100%	99%	100%	345	37	31%	60%	91%	89%	97%	511	180	39%	60%	98%	97%	99%
Brunswick CC	179	105	45%	45%	90%	94%	99%	466	47	40%	40%	81%	85%	87%	645	152	44%	44%	87%	91%	95%
Caldwell CC & TI	584	266	52%	45%	97%	97%	96%	1141	89	46%	42%	88%	95%	94%	1725	355	51%	44%	95%	97%	95%
Cape Fear CC	1511	1249	54%	45%	98%	99%	98%	2509	328	43%	54%	97%	96%	96%	4020	1577	51%	47%	98%	98%	97%
Carteret CC	283	160	64%	36%	100%	100%	99%	696	68	44%	47%	91%	96%	95%	979	228	58%	39%	97%	99%	98%
Catawba Valley CC	727	521	33%	62%	96%	97%	99%	710	89	34%	60%	94%	94%	88%	1437	610	33%	62%	96%	97%	98%
Central Carolina CC	711	434	46%	50%	97%	97%	98%	1599	160	39%	55%	94%	98%	98%	2310	594	44%	52%	96%	97%	98%
Central Piedmont CC	1337	360	41%	54%	96%	98%	98%	7797	436	7%	92%	99%	96%	97%	9134	796	23%	74%	97%	97%	98%
Cleveland CC	494	266	59%	37%	95%	96%	97%	266	26	48%	48%	96%	96%	99%	760	292	58%	38%	95%	96%	98%
Coastal Carolina CC	839	685	76%	22%	98%	98%	98%	2230	273	73%	26%	100%	97%	95%	3069	958	75%	23%	98%	98%	97%
College of The Albemarle	558	296	54%	43%	97%	96%	98%	797	82	37%	54%	91%	95%	97%	1355	378	51%	45%	96%	96%	98%
Craven CC	297	53	38%	60%	98%	93%	97%	1435	84	25%	61%	86%	91%	94%	1732	137	31%	60%	91%	92%	96%
Davidson County CC	721	307	57%	42%	99%	98%	98%	928	96	45%	46%	91%	90%	96%	1649	403	54%	43%	97%	96%	97%
Durham TCC	575	285	45%	52%	97%	97%	99%	2091	240	22%	68%	90%	88%	95%	2666	525	34%	60%	94%	92%	97%
Edgecombe CC	353	334	66%	28%	93%	97%	97%	1188	121	73%	24%	97%	97%	100%	1541	455	68%	27%	94%	97%	98%
Fayetteville TCC	904	672	45%	52%	96%	99%	97%	2802	277	32%	52%	84%	92%	88%	3706	949	41%	52%	93%	97%	95%
Forsyth TCC	1214	437	37%	60%	97%	95%	94%	3245	194	34%	55%	89%	95%	92%	4459	631	36%	58%	95%	95%	93%
Gaston College	1072	710	45%	52%	97%	97%	98%	2685	290	32%	58%	90%	95%	92%	3757	1000	41%	54%	95%	97%	97%
Guilford TCC	1306	843	44%	53%	97%	96%	97%	4888	296	37%	50%	87%	93%	88%	6194	1139	42%	52%	95%	95%	95%
Halifax CC	273	167	55%	44%	99%	97%	99%	768	86	24%	74%	98%	100%	91%	1041	253	45%	54%	99%	98%	96%
Haywood CC	401	196	60%	37%	97%	96%	96%	514	51	55%	35%	90%	96%	98%	915	247	59%	37%	96%	96%	97%
Isothermal CC	362	163	81%	19%	100%	99%	99%	739	128	67%	30%	98%	98%	95%	1101	291	75%	24%	99%	99%	98%
James Sprunt CC	56	56	41%	59%	100%	95%	97%	445	70	46%	43%	89%	95%	92%	501	126	44%	50%	94%	95%	95%
Johnston CC	744	462	52%	46%	98%	99%	99%	708	76	64%	30%	95%	91%	96%	1452	538	54%	44%	98%	97%	98%
Lenoir CC	454	65	42%	53%	95%	96%	95%	1109	127	36%	61%	97%	100%	97%	1563	192	38%	58%	96%	98%	96%
Martin CC	59	30	24%	69%	93%	98%	92%	319	62	37%	55%	92%	78%	91%	378	92	33%	60%	92%	90%	91%
Mayland CC	407	256	67%	31%	98%	97%	98%	286	33	48%	52%	100%	100%	100%	693	289	64%	34%	98%	97%	98%
McDowell TCC	275	246	56%	41%	97%	97%	94%	459	46	68%	32%	100%	100%	81%	734	292	58%	40%	98%	98%	92%
Mitchell CC	343	184	44%	54%	98%	98%	99%	1059	100	30%	59%	89%	91%	91%	1402	284	39%	56%	95%	96%	96%
Montgomery CC	104	52	63%	37%	100%	100%	99%	111	25	52%	44%	96%	92%	100%	215	77	60%	39%	99%	98%	99%
Nash CC	430	163	55%	45%	100%	97%	100%	2061	321	41%	55%	97%	96%	100%	2491	484	46%	51%	98%	97%	100%
Pamlico CC	126	48	71%	29%	100%	96%	95%	161	28	52%	44%	96%	90%	92%	287	76	64%	35%	99%	95%	94%
Piedmont CC	577	158	68%	31%	99%	98%	95%	296	29	28%	68%	96%	100%	94%	873	187	62%	36%	98%	99%	95%
Pitt CC	1170	676	42%	57%	99%	98%	99%	2489	264	41%	56%	97%	98%	100%	3659	940	42%	56%	98%	98%	99%
Randolph CC	351	187	55%	44%	99%	98%	98%	793	87	32%	53%	84%	84%	98%	1144	274	48%	47%	95%	93%	98%
Richmond CC	308	214	58%	37%	95%	96%	100%	716	74	40%	52%	92%	90%	100%	1024	288	53%	41%	94%	95%	100%
Roanoke-Chowan CC	136	136	57%	40%	96%	96%	77%	331	205	36%	63%	99%	100%	89%	467	341	44%	54%	98%	97%	83%
Robeson CC	240	140	38%	57%	96%	95%	97%	1260	129	25%	71%	96%	95%	95%	1500	269	32%	64%	96%	95%	96%
Rockingham CC	379	249	69%	29%	98%	100%	99%	662	70	52%	42%	94%	90%	89%	1041	319	66%	31%	97%	98%	97%
Rowan-Cabarrus CC	768	286	54%	44%	98%	97%	96%	1080	118	39%	59%	98%	92%	95%	1848	404	50%	48%	98%	95%	96%
Sampson CC	179	110	62%	38%	100%	99%	97%	440	54	21%	79%	100%	100%	83%	619	164	48%	52%	100%	99%	94%
Sandhills CC	565	348	57%	42%	99%	99%	100%	1407	141	43%	51%	94%	94%	97%	1972	489	53%	44%	98%	98%	99%
South Piedmont CC	322	195	40%	53%	93%	93%	90%	976	100	28%	56%	84%	86%	72%	1298	295	36%	54%	90%	92%	87%
Southeastern CC	233	233	48%	49%	97%	96%	98%	496	49	31%	67%	98%	94%	100%	729	282	45%	52%	97%	96%	98%
Southwestern CC	449	223	73%	26%	100%	99%	98%	681	79	54%	41%	95%	97%	98%	1130	302	68%	30%	98%	98%	98%
Stanly CC	484	389	63%	36%	99%	98%	99%	364	69	57%	43%	100%	96%	98%	848	458	62%	37%	99%	97%	99%
Surry CC	424	289	54%	45%	99%	97%	97%	1016	130	60%	36%	96%	98%	97%	1440	419	56%	42%	98%	97%	97%
Tri-County CC	144	85	65%	35%	100%	99%	97%	381	42	69%	29%	98%	88%	97%	525	127	67%	33%	99%	96%	97%
Vance-Granville CC	456	283	57%	40%	98%	100%	98%	1126	112	37%	55%	92%	92%	92%	1582	395	52%	44%	96%	98%	96%
Wake TCC	1831	868	42%	56%	98%	94%	95%	1988	196	27%	56%	83%	93%	96%	3819	1064	40%	56%	95%	94%	95%
Wayne CC	534	498	63%	37%	100%	100%	99%	1252	125	53%	43%	97%	100%	100%	1786	623	61%	39%	99%	100%	99%
Western Piedmont CC	401	310	49%	50%	99%	97%	98%	353	45	39%	59%	98%	91%	94%	754	355	48%	51%	99%	96%	98%
Wilkes CC	365	192	64%	32%	96%	98%	97%	790	90	61%	32%	93%	92%	98%	1155	282	63%	32%	95%	96%	97%
Wilson CC	276	148	48%	51%	99%	98%	99%	770	83	27%	66%	92%	98%	99%	1046	231	41%	56%	97%	98%	99%

G: CURRICULUM STUDENT RETENTION, GRADUATION, AND TRANSFER

Description

The percentage of fall credential-seeking students who have graduated or are still enrolled at the same college, a university, or another community college one year later.

Source

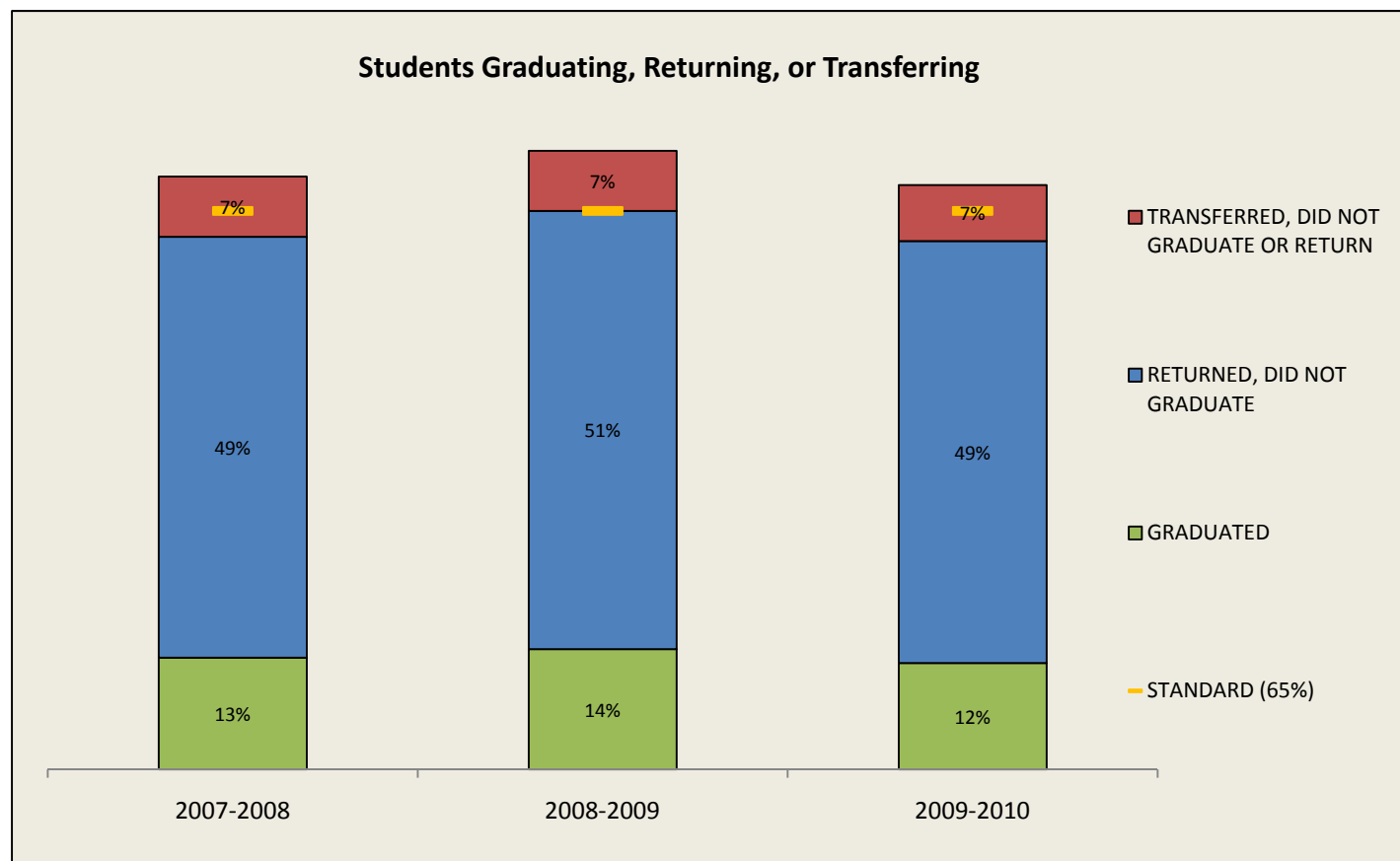
At the end of each semester, colleges submit a Curriculum Registration, Progress, Financial Aid Report (CRPFAR) data file which is uploaded to the NCCCS Data Warehouse. Student enrollment data in the Data Warehouse's Curriculum Student Info II Universe was extracted by filtering "Curriculum Type Desc" equal to "Associate;Certificate;Diploma" and "Reporting Term" equal to "200903". This fall 2009 list of students was matched against those with a "Date Graduated in Curriculum" between "07/01/2009" and "12/31/2010" to determine those graduating. The fall 2009 list was also matched against those with "Reporting Term" equal to "201003" in either the Data Warehouse's Curriculum Student Info II or Con-Ed Universe (with "Funding Code Area" equal to "03" or "04") to determine fall 2010 enrollments in either curriculum or occupational extension programs. Finally, the fall 2009 list was sent to the National Student Clearinghouse to identify those who transferred to a college or university outside of the NC community College System. The combined data set was analyzed to determine which students from the fall 2009 list had had "graduated", "returned but did not graduate", "transferred but did not graduate or return", or "did not graduate, return, or transfer".

Performance Standard

65% of fall credential-seeking students will graduate, remain enrolled at the same college, or transfer to a university or another community college one year later.

Results

For 2009-10, 52 community colleges met this standard. The college results ranged from a low of 62% to a high of 73%. The aggregate result for the system was 68%.



G. CURRICULUM STUDENT RETENTION, GRADUATION AND TRANSFER, 2009-2010

	ENROLLED	% GRADUATE			% RETURN			% TRANSFER			% GRADUATE, TRANSFER, OR RETURN		
		09-10	08-09	07-08	09-10	08-09	07-08	09-10	08-09	07-08	09-10	08-09	07-08
System Totals	207,636	12%	14%	13%	49%	51%	49%	7%	7%	7%	68%	72%	69%
Alamance CC	4,607	12%	15%	14%	52%	53%	52%	5%	6%	5%	69%	74%	71%
Asheville-Buncombe TCC	4,959	16%	17%	17%	49%	50%	49%	5%	5%	5%	70%	72%	71%
Beaufort County CC	1,676	11%	16%	16%	50%	54%	52%	5%	5%	5%	66%	75%	73%
Bladen CC	1,574	9%	11%	11%	57%	57%	57%	6%	6%	7%	71%	74%	75%
Blue Ridge CC	1,964	11%	12%	11%	50%	51%	49%	5%	6%	7%	66%	69%	67%
Brunswick CC	1,280	12%	15%	16%	45%	48%	45%	6%	8%	6%	63%	71%	67%
Caldwell CC & TI	3,947	14%	14%	11%	49%	54%	53%	6%	8%	9%	69%	76%	73%
Cape Fear CC	8,109	14%	15%	14%	51%	52%	50%	7%	8%	9%	72%	75%	73%
Carteret CC	1,617	13%	14%	14%	50%	49%	53%	5%	5%	6%	67%	68%	73%
Catawba Valley CC	4,597	10%	15%	13%	53%	52%	51%	7%	5%	6%	70%	72%	70%
Central Carolina CC	4,149	18%	21%	20%	44%	44%	45%	4%	5%	4%	66%	70%	69%
Central Piedmont CC	17,647	8%	8%	8%	47%	49%	49%	9%	10%	9%	64%	67%	66%
Cleveland CC	2,974	14%	16%	14%	44%	46%	46%	6%	6%	6%	64%	68%	66%
Coastal Carolina CC	4,641	16%	16%	17%	45%	46%	45%	9%	9%	9%	69%	71%	71%
College of The Albemarle	2,325	15%	15%	16%	45%	48%	47%	9%	7%	7%	69%	70%	70%
Craven CC	2,969	11%	12%	10%	49%	48%	48%	6%	8%	8%	66%	68%	66%
Davidson County CC	3,559	16%	16%	20%	51%	52%	45%	5%	5%	5%	72%	73%	70%
Durham TCC	4,607	9%	9%	10%	48%	49%	49%	10%	10%	8%	66%	68%	67%
Edgecombe CC	2,832	9%	13%	15%	52%	57%	53%	5%	4%	4%	66%	74%	72%
Fayetteville TCC	9,273	10%	11%	9%	49%	52%	51%	7%	8%	7%	66%	71%	67%
Forsyth TCC	8,084	14%	14%	13%	50%	51%	50%	6%	7%	7%	69%	72%	70%
Gaston College	5,875	12%	13%	11%	50%	52%	51%	6%	5%	5%	67%	70%	67%
Guilford TCC	12,738	9%	11%	10%	51%	52%	50%	8%	9%	8%	68%	72%	68%
Halifax CC	1,545	18%	20%	22%	45%	47%	43%	4%	5%	5%	67%	72%	70%
Haywood CC	1,631	19%	17%	17%	45%	48%	46%	5%	5%	6%	69%	70%	69%
Isothermal CC	2,039	15%	14%	15%	51%	50%	46%	4%	7%	6%	70%	71%	67%
James Sprunt CC	1,141	22%	24%	25%	45%	47%	44%	5%	4%	5%	72%	75%	74%
Johnston CC	3,464	13%	16%	17%	50%	52%	49%	8%	7%	7%	72%	75%	73%
Lenoir CC	2,536	16%	14%	17%	49%	53%	49%	5%	7%	7%	70%	74%	73%
Martin CC	651	10%	16%	11%	46%	51%	51%	6%	6%	6%	62%	73%	68%
Mayland CC	1,082	28%	27%	32%	35%	41%	38%	4%	4%	3%	68%	72%	73%
McDowell TCC	1,252	15%	19%	20%	46%	44%	42%	3%	4%	4%	64%	67%	66%
Mitchell CC	2,808	12%	13%	9%	51%	53%	52%	5%	5%	8%	69%	71%	69%
Montgomery CC	787	28%	25%	23%	38%	44%	46%	2%	3%	3%	67%	72%	72%
Nash CC	2,548	11%	12%	12%	50%	53%	51%	6%	7%	6%	67%	72%	69%
Pamlico CC	389	32%	32%	31%	38%	38%	40%	3%	5%	3%	72%	75%	74%
Piedmont CC	2,114	17%	23%	24%	44%	43%	43%	5%	5%	5%	66%	71%	72%
Pitt CC	6,351	12%	14%	15%	53%	53%	52%	8%	8%	8%	73%	75%	75%
Randolph CC	2,242	13%	13%	13%	53%	54%	53%	4%	5%	5%	69%	72%	71%
Richmond CC	1,705	13%	12%	13%	49%	54%	53%	5%	6%	5%	68%	72%	71%
Roanoke-Chowan CC	724	15%	20%	14%	44%	47%	42%	7%	7%	5%	65%	74%	61%
Robeson CC	2,465	11%	16%	14%	49%	51%	49%	7%	6%	5%	66%	73%	68%
Rockingham CC	2,247	14%	14%	14%	51%	53%	50%	5%	5%	5%	70%	72%	69%
Rowan-Cabarrus CC	6,307	9%	13%	10%	52%	51%	50%	6%	6%	6%	66%	70%	66%
Sampson CC	1,269	17%	21%	22%	49%	52%	48%	4%	4%	5%	70%	77%	75%
Sandhills CC	3,509	12%	15%	10%	49%	50%	51%	5%	7%	7%	66%	72%	68%
South Piedmont CC	2,223	15%	16%	17%	47%	51%	47%	5%	7%	6%	67%	74%	70%
Southeastern CC	1,907	13%	14%	11%	46%	52%	52%	7%	8%	6%	67%	74%	69%
Southwestern CC	1,911	20%	17%	18%	47%	49%	46%	4%	5%	6%	71%	71%	70%
Stanly CC	2,612	18%	17%	19%	46%	47%	47%	5%	4%	4%	69%	68%	70%
Surry CC	2,408	17%	15%	14%	48%	53%	52%	5%	6%	6%	70%	74%	72%
Tri-County CC	1,015	11%	17%	13%	47%	46%	47%	6%	8%	6%	65%	71%	66%
Vance-Granville CC	3,838	16%	15%	11%	42%	47%	52%	5%	5%	5%	62%	67%	68%
Wake TCC	14,774	9%	8%	9%	53%	52%	51%	9%	10%	9%	70%	70%	69%
Wayne CC	3,135	14%	15%	14%	49%	50%	50%	6%	7%	9%	69%	72%	73%
Western Piedmont CC	2,907	15%	16%	17%	52%	56%	53%	4%	5%	5%	72%	77%	75%
Wilkes CC	2,407	14%	15%	15%	50%	54%	51%	5%	6%	6%	69%	75%	72%
Wilson CC	1,690	14%	16%	16%	47%	49%	47%	5%	6%	5%	66%	71%	68%

H: CLIENT SATISFACTION WITH CUSTOMIZED TRAINING

Description

Percentage of clients receiving specialized training programs and services through Customized Training and Small Business Centers satisfied with training.

Source

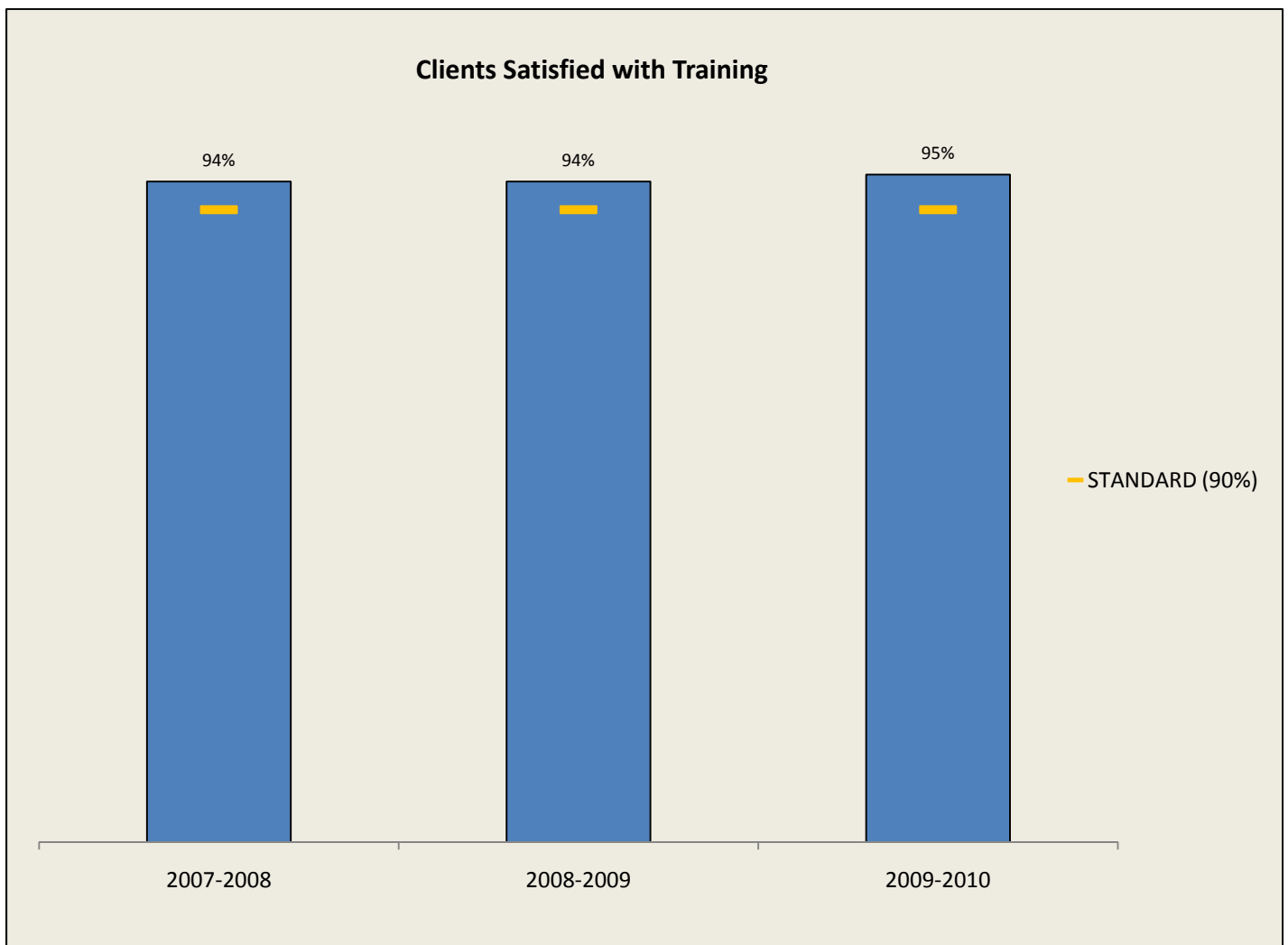
Surveys administered to clients receiving services through Customized Training Program projects and Business & Industry Support training activities, and from Small Business Centers were administered by colleges to determine level of satisfaction with training. The data is submitted annually to the System Office at the end of the fiscal year. Satisfaction for each of these surveys are based on a five point scale with satisfaction being based on the highest two points.

Performance Standard

90% of clients receiving specialized training programs and services through Customized Training and Small Business Centers will be satisfied with training.

Results

For 2009-10, all 58 community colleges met this standard. The college results ranged from a low of 90% to a high of 100%. The aggregate result for the system was 95%.



H. CLIENT SATISFIED WITH CUSTOMIZED TRAINING, 2009-2010

	SMALL BUSINESS CENTERS		CUSTOMIZED TRAINING AND BUSINESS & INDUSTRY SUPPORT		AGGREGATE % EXCELLENT & VERY GOOD*		
	RESPONDENTS	% EXCELLENT & VERY GOOD	RESPONDENTS	% EXCELLENT & VERY GOOD	2009-2010	2008-2009	2007-2008
System Totals	49,547	95%	645	99%	95%	94%	94%
Alamance CC	537	95%	32	91%	95%	94%	95%
Asheville-Buncombe TCC	748	93%	20	100%	93%	93%	94%
Beaufort County CC	479	94%	4	100%	94%	96%	96%
Bladen CC	183	98%	5	100%	98%	99%	99%
Blue Ridge CC	7,598	97%	5	100%	97%	93%	93%
Brunswick CC	331	96%	6	100%	96%	95%	92%
Caldwell CC & TI	1,495	91%	6	100%	91%	92%	95%
Cape Fear CC	1,802	95%	8	100%	95%	93%	94%
Carteret CC	618	93%			93%	87%	88%
Catawba Valley CC	964	96%	13	100%	96%	92%	95%
Central Carolina CC	822	97%	16	100%	97%	96%	96%
Central Piedmont CC	1,738	90%	23	100%	91%	93%	93%
Cleveland CC	391	92%	6	83%	92%	94%	96%
Coastal Carolina CC	871	95%	2	100%	95%	94%	93%
College of The Albemarle	1,302	92%	3	100%	92%	92%	90%
Craven CC	1,023	97%	4	100%	97%	96%	100%
Davidson County CC	269	93%	2	100%	93%	93%	91%
Durham TCC	698	94%	12	100%	94%	93%	90%
Edgecombe CC	363	97%	6	83%	96%	95%	98%
Fayetteville TCC	1,583	91%	8	100%	92%	93%	96%
Forsyth TCC	1,218	95%	13	92%	95%	96%	96%
Gaston College	668	97%	16	100%	97%	93%	98%
Guilford TCC	637	94%	8	100%	94%	95%	80%
Halifax CC	1,198	100%	5	100%	100%	94%	96%
Haywood CC	462	93%	3	100%	93%	95%	93%
Isothermal CC	228	95%	9	100%	95%	96%	86%
James Sprunt CC	1,473	100%	27	100%	100%	100%	99%
Johnston CC	1,804	94%	25	96%	94%	95%	98%
Lenoir CC	876	95%	12	100%	95%	94%	95%
Martin CC	594	94%	3	100%	94%	95%	93%
Mayland CC	382	95%	2	100%	95%	96%	96%
McDowell TCC	475	100%	8	100%	100%	100%	100%
Mitchell CC	411	96%	17	100%	96%	93%	93%
Montgomery CC	525	97%	2	100%	97%	93%	93%
Nash CC	950	96%	4	100%	96%	92%	96%
Pamlico CC **	73	99%			99%	92%	87%
Piedmont CC	462	92%	6	100%	93%	92%	93%
Pitt CC	931	95%	15	100%	95%	90%	92%
Randolph CC	460	92%	3	100%	92%	94%	97%
Richmond CC	193	99%	47	100%	100%	96%	89%
Roanoke-Chowan CC	354	95%	4	100%	95%	95%	93%
Robeson CC	1,258	94%	19	100%	94%	95%	96%
Rockingham CC	386	94%	16	100%	94%	91%	92%
Rowan-Cabarrus CC	564	92%	16	100%	92%	90%	93%
Sampson CC	577	93%	5	100%	93%	83%	96%
Sandhills CC	1,164	93%	8	100%	93%	96%	94%
South Piedmont CC	270	93%	7	100%	94%	93%	94%
Southeastern CC	1,440	94%	3	100%	94%	91%	92%
Southwestern CC	93	94%	13	100%	94%	100%	100%
Stanly CC	689	92%	21	100%	93%	92%	95%
Surry CC	158	99%	12	100%	99%	98%	97%
Tri-County CC	231	94%	3	100%	94%	98%	94%
Vance-Granville CC	414	94%	25	100%	94%	93%	98%
Wake TCC	2,916	96%	31	94%	96%	97%	97%
Wayne CC	429	95%	9	100%	95%	95%	92%
Western Piedmont CC	166	99%	29	100%	99%	97%	94%
Wilkes CC	325	90%	6	100%	90%	96%	98%
Wilson TCC	278	96%	12	100%	97%	95%	95%

* Did not include Customized Training and Business & Industry Support prior to 2009-10

** For customized training, Pamlico is in consortium with Craven CC