

2012 JUNE
QUARTER

APPRENTICES & TRAINEES

Australian vocational
education & training
statistics



Australian Government

**Department of Industry, Innovation
Science, Research and Tertiary Education**



NCVER

Australian vocational education and training statistics

Apprentices and trainees

June quarter

2012

Highlights

There were 514 900 apprentices and trainees in-training as at 30 June 2012, an increase of 11.3% from the previous year.

In the 12 months to 30 June 2012, compared with the previous year:

- commencements increased by 14.7%, to 368 200
- completions increased by 8.1%, to 185 800
- cancellations and withdrawals increased by 2.8%, to 140 500.

For seasonally adjusted data, comparing the June quarter 2012 with the March quarter 2012:

- commencements in trades occupations increased by 5.8%
- commencements in non-trades occupations increased by 11.2%
- completions decreased slightly
- cancellations and withdrawals remained steady
- in-training numbers increased by 2.4%.



Australian Government

Department of Industry, Innovation
Science, Research and Tertiary Education

© Commonwealth of Australia, 2012



With the exception of the Commonwealth Coat of Arms, the Department's logo, any material protected by a trade mark and where otherwise noted all material presented in this document is provided under a Creative Commons Attribution 3.0 Australia <<http://creativecommons.org/licenses/by/3.0/au>> licence.

The details of the relevant licence conditions are available on the Creative Commons website (accessible using the links provided) as is the full legal code for the CC BY 3.0 AU licence <<http://creativecommons.org/licenses/by/3.0/legalcode>>.

The Creative Commons licence conditions do not apply to all logos, graphic design, artwork and photographs. Requests and enquiries concerning other reproduction and rights should be directed to the National Centre for Vocational Education Research (NCVER).

This document should be attributed as NCVER 2012, *Australian vocational education and training statistics: apprentices and trainees 2012—June quarter*, NCVER, Adelaide.

This work has been produced by NCVER on behalf of the Australian Government and state and territory governments, with funding provided through the Department of Industry, Innovation, Science, Research and Tertiary Education.

The views and opinions expressed in this document are those of NCVER and do not necessarily reflect the views of the Australian Government or state and territory governments.

ISSN 1440-0359

TD/TNC 110.16

Comments and suggestions regarding this publication are welcomed and should be forwarded to NCVER.

Published by NCVER

ABN 87 007 967 311

Level 11, 33 King William Street, Adelaide SA 5000

PO Box 8288, Station Arcade, Adelaide SA 5000, Australia

Phone: (08) 8230 8400

Fax: (08) 8212 3436

Web: <<http://www.ncver.edu.au>>

Email: <ats_req@ncver.edu.au>

Contents

Apprentice and trainee directions	4
Introduction	4
Overall trends	4
Seasonally adjusted data	4
Tables	6
Terms	18
Technical notes	19
Data source	19
Estimation procedure	19
Seasonal adjustments	19
Notes on figures and tables	20

Tables

Quarterly training activity	6
1 In-training by state/territory and selected training characteristics, as at 30 June 2012 ('000)	6
2 In-training by state/territory as at the end of each quarter, 2007–12 ('000)	6
3 Commencements by state/territory and selected training characteristics, June quarter 2012 ('000)	7
4 Commencements in each quarter by state/territory, 2007–12 ('000)	7
5 Completions by state/territory and selected training characteristics, June quarter 2012 ('000)	8
6 Completions in each quarter by state/territory, 2007–12 ('000)	8
7 Cancellations and withdrawals by state/territory and selected training characteristics, June quarter 2012 ('000)	9
8 Cancellations and withdrawals in each quarter by state/territory, 2007–12 ('000)	9
9 In-training as at the end of each quarter by selected training characteristics, Australia, 2007–12 ('000)	10
10 Commencements in each quarter by selected training characteristics, Australia, 2007–12 ('000)	10
11 Completions in each quarter by selected training characteristics, Australia, 2007–12 ('000)	12
12 Cancellations and withdrawals in each quarter by selected training characteristics, Australia, 2007–12 ('000)	12
13 In-training in top 20 training packages by state/territory, as at 30 June 2012 ('000)	14
14 Commencements in top 20 training packages by state/territory, June quarter 2012 ('000)	14
Training activity: 12-month ending series	15
15 Commencements by selected training characteristics, 12 months ending 30 June, Australia, 2007–12 ('000)	15
16 Completions by selected training characteristics, 12 months ending 30 June, Australia, 2007–12 ('000)	15
17 Commencements by occupation and state/territory, 12 months ending 30 June 2012 ('000)	16
18 Commencements by industry skills councils, 12 months ending 30 June 2012, Australia ('000)	17
Seasonally adjusted commencements	17
19 Seasonally adjusted commencements in each quarter, by state/territory, 2007–12 ('000)	17

Figures

1 In-training, seasonally adjusted, 2002–12 ('000)	5
2 Commencements, completions and cancellations/withdrawals, seasonally adjusted, 2002–12 ('000)	5
3 Trades and non-trades commencements, seasonally adjusted, 2002–12 ('000)	5

Apprentice and trainee directions

Introduction

This publication presents estimates of apprentice and trainee activity in Australia for the June quarter 2012. The figures in this publication are derived from the National Apprentice and Trainee Collection no.73 (September 2012 estimates).

The most recent figures in this publication are estimated (those for training activity from the December quarter 2010 to the June quarter 2012). Estimates take into account reporting lags that occur at the time of data collection. Consequently, the figures in this publication may differ from those published in earlier or later reports.

Estimated data are presented in this publication on a seasonally adjusted, quarterly and 12-month ending series basis. The 12-month ending series is particularly useful in showing longer-term data trends, but is less useful in identifying turning points.

The seasonally adjusted data involve the use of a mathematical model to smooth out fluctuations due to seasonal influences. Seasonally adjusted data are useful to illustrate trends from one quarter to the next, but cannot be further disaggregated.

Further details on the estimation methodology and seasonally adjusted data tables can be found at <http://www.ncver.edu.au/publications/2582.html>.

Overall trends

In-training

The number of apprentices and trainees in-training as at 30 June 2012 was 514 900, an increase of 11.3% from one year earlier.

For the 12 months ending 30 June 2012

Commencements

The number of commencements in the 12 months ending 30 June 2012 was 368 200, an increase of 14.7% from one year earlier.

Of this:

- trades commencements increased by 3.2%
- non-trades commencements increased by 19.5%.

State and territory commencements in the 12 months to 30 June 2012, compared with the previous year, showed:

- New South Wales (+9.7%) ■ Western Australia (+22.2%)
- Victoria (+15.9%) ■ Tasmania (+13.0%)
- Queensland (+16.7%) ■ Northern Territory (-2.4%)
- South Australia (+17.6%) ■ Australian Capital Territory (+20.2%)

Completions

The number of completions in the 12 months ending 30 June 2012 was 185 800, an increase of 8.1% from one year earlier.

Cancellations and withdrawals

The number of cancellations and withdrawals in the 12 months ending 30 June 2012 was 140 500, an increase of 2.8% from one year earlier.

Seasonally adjusted data

In-training

The number of apprentices and trainees in-training has increased over the last three quarters. The number in-training increased by 2.4% between 31 March 2012 and 30 June 2012, from 478 700 to 490 000.

Commencements

The number of trades commencements has increased over the last three quarters. Between the March quarter 2012 and the June quarter 2012, trades commencements increased by 5.8%.

The number of non-trades commencements has increased over the last three quarters. Between the March quarter 2012 and the June quarter 2012, non-trades commencements increased by 11.2%.

Completions

The number of completions decreased slightly between the March quarter 2012 and the June quarter 2012, from 46 700 to 46 600.

Cancellations and withdrawals

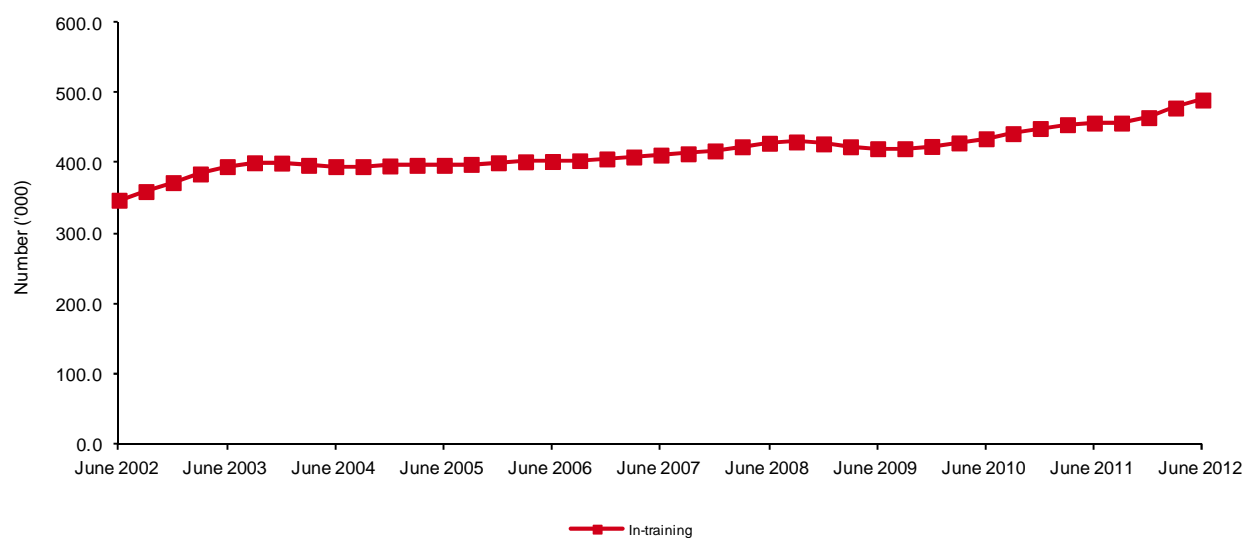
The number of cancellations and withdrawals remained steady between the March quarter 2012 and the June quarter 2012.

For more information on seasonally adjusted data, see the technical notes on page 19.

Additional seasonally adjusted data tables are available at <http://www.ncver.edu.au/publications/2582.html>.

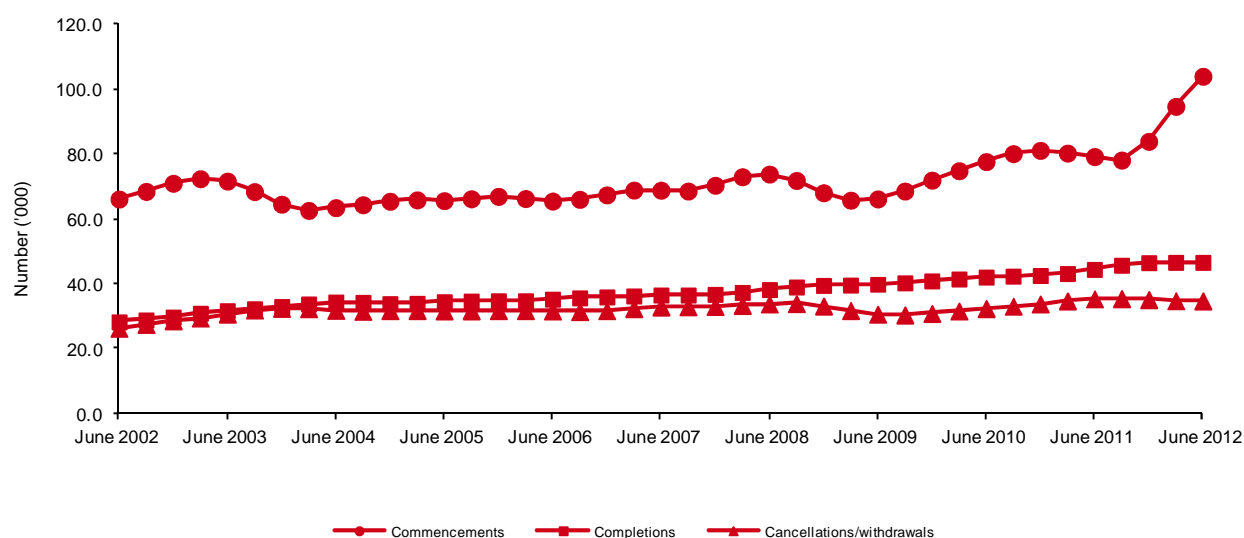
For more information on concepts and definitions used in this publication, see **Terms** listed on page 18.

Figure 1 In-training, seasonally adjusted,¹ 2002–12 ('000)



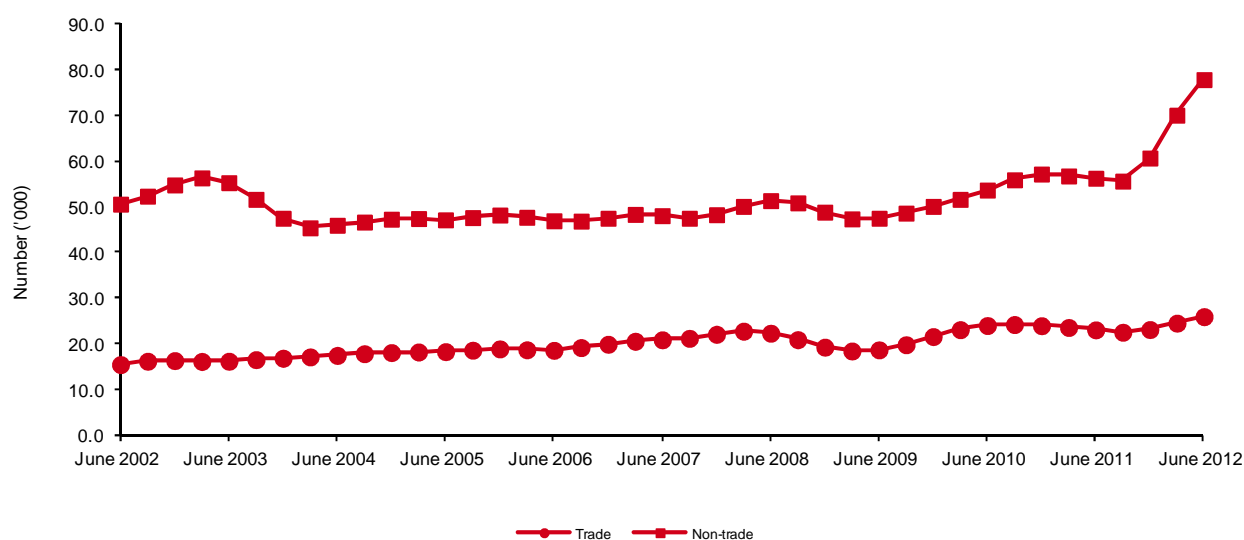
For notes on figures and tables, see page 20.

Figure 2 Commencements^{2,3}, completions and cancellations/withdrawals,⁴ seasonally adjusted,¹ 2002–12 ('000)



For notes on figures and tables, see page 20.

Figure 3 Trades and non-trades^{2,3,5,6} commencements, seasonally adjusted,¹ 2002–12 ('000)



For notes on figures and tables, see page 20.

Tables

Quarterly training activity

Table 1 In-training by state/territory and selected training characteristics, as at 30 June 2012 ('000)

		NSW	Vic.	Qld	SA	WA	Tas.	NT	ACT	Australia
Age	19 years and under	35.5	34.8	33.1	9.2	14.4	3.3	1.1	2.5	133.9
	20 to 24 years	39.3	35.4	22.8	9.3	10.7	3.0	1.1	3.3	125.0
	25 to 44 years	54.9	45.0	35.5	15.0	14.9	4.8	1.6	3.6	175.3
	45 years and over	27.8	22.1	14.6	6.9	5.6	2.0	0.4	1.3	80.7
Sex	Male	96.4	86.7	66.9	26.4	32.3	8.0	2.8	6.1	325.4
	Female	61.2	50.6	39.1	14.0	13.4	5.1	1.4	4.7	189.5
Occupation (ANZSCO) group	Managers and professionals	11.7	14.3	12.7	4.7	2.9	1.2	0.3	1.5	49.4
	Technicians and trades workers	61.3	53.1	47.4	15.1	24.5	5.5	2.2	3.8	212.8
	Community and personal service workers	20.2	16.4	10.1	2.6	5.1	1.7	0.6	2.2	59.0
	Clerical and administrative workers	26.5	18.3	16.1	7.1	3.9	2.1	0.4	1.4	76.0
	Sales workers	17.1	16.7	9.1	5.0	2.3	1.4	0.2	0.8	52.7
	Machinery operators and drivers	12.6	6.1	5.9	3.5	3.6	0.6	0.1	0.3	32.7
	Labourers	8.1	12.2	4.6	2.3	3.4	0.7	0.3	0.7	32.3
AQF qualification level	Certificate I or II	6.3	3.0	5.1	2.6	3.1	0.8	0.5	0.4	21.9
	Certificate III	105.0	96.5	70.0	26.0	32.5	8.6	3.1	7.0	348.8
	Certificate IV	34.8	21.9	18.2	7.6	7.0	2.2	0.4	1.8	93.8
	Diploma/advanced diploma	11.5	15.8	12.6	4.2	3.0	1.6	0.2	1.5	50.4
Full-time status	Full-time	120.2	99.3	75.3	30.7	39.4	9.7	3.5	7.3	385.4
	Part-time	37.4	38.0	30.6	9.7	6.2	3.5	0.7	3.5	129.5
Total⁷		157.6	137.3	105.9	40.4	45.6	13.1	4.2	10.7	514.9

For notes on figures and tables, see page 20.

Table 2 In-training by state/territory as at the end of each quarter, 2007–12 ('000)

Quarter	NSW	Vic.	Qld	SA	WA	Tas.	NT	ACT	Australia
June 2007	128.4	107.4	89.6	31.4	34.3	12.8	3.3	6.7	414.0
September 2007	130.5	106.9	91.3	31.6	34.7	13.0	3.3	6.7	418.1
December 2007	130.2	100.9	87.1	30.1	34.0	12.7	3.2	6.2	404.4
March 2008	136.6	105.6	93.1	31.4	36.2	13.3	3.6	6.9	426.7
June 2008	139.1	107.3	95.1	32.0	36.7	13.4	3.7	6.8	434.0
September 2008	140.4	107.4	94.2	32.1	36.9	13.1	3.7	6.7	434.4
December 2008	137.0	102.4	87.4	31.1	35.8	12.2	3.5	5.9	415.2
March 2009	140.4	104.7	90.5	31.6	37.3	12.4	3.8	6.6	427.3
June 2009	138.9	104.6	89.5	31.9	36.8	12.2	3.9	6.7	424.3
September 2009	138.7	104.9	89.7	31.7	36.3	12.0	4.0	6.9	424.1
December 2009	137.8	100.7	85.5	30.3	35.3	11.3	3.8	6.4	411.1
March 2010	144.0	105.5	91.2	32.3	37.1	12.0	4.2	7.1	433.5
June 2010	144.5	107.3	92.6	32.8	37.5	12.1	4.3	7.2	438.4
September 2010	147.0	110.6	94.1	33.1	37.5	12.2	4.3	7.4	446.3
December 2010	146.1	107.6	90.3	32.8	37.5	11.7	4.0	7.2	437.4
March 2011	150.4	115.0	94.4	34.4	39.3	12.3	4.5	8.1	458.5
June 2011	148.0	119.4	95.7	35.2	39.5	12.4	4.5	8.1	462.7
September 2011	147.4	120.5	95.4	35.6	38.8	12.3	4.4	8.6	463.0
December 2011	143.4	117.0	90.6	35.7	38.1	11.7	3.9	8.8	449.2
March 2012	148.6	121.8	96.9	37.4	41.0	12.2	4.2	9.8	471.9
June 2012	157.6	137.3	105.9	40.4	45.6	13.1	4.2	10.7	514.9

For notes on figures and tables, see page 20.

Table 3 Commencements² by state/territory and selected training characteristics, June quarter 2012 ('000)

		NSW	Vic. ³	Qld	SA	WA	Tas.	NT	ACT	Australia
Age	19 years and under	5.4	9.8	5.9	1.7	2.5	0.6	0.2	0.4	26.6
	20 to 24 years	5.1	6.0	3.6	1.4	1.9	0.4	0.1	0.3	18.9
	25 to 44 years	12.9	14.2	9.8	3.8	4.8	1.1	0.3	0.6	47.6
	45 years and over	7.1	8.1	4.7	1.7	2.2	0.5	0.1	0.3	24.7
Sex	Male	15.8	20.8	13.2	5.0	6.7	1.4	0.4	0.8	64.0
	Female	14.7	17.3	10.9	3.7	4.6	1.3	0.4	0.9	53.8
Occupation (ANZSCO) group	Managers and professionals	3.4	5.3	4.0	1.3	1.3	0.3	0.1	0.2	15.8
	Technicians and trades workers	5.7	6.4	5.7	1.7	3.2	0.7	0.2	0.3	24.0
	Community and personal service workers	4.5	5.1	2.9	0.6	2.4	0.5	0.2	0.4	16.5
	Clerical and administrative workers	7.1	6.6	5.0	2.1	1.4	0.5	0.1	0.3	23.1
	Sales workers	4.9	7.8	3.1	1.6	0.9	0.4	0.1	0.2	18.8
	Machinery operators and drivers	2.6	2.4	1.8	0.9	1.0	0.1	0.0	0.1	8.8
	Labourers	2.3	4.4	1.7	0.6	1.1	0.2	0.1	0.2	10.7
AQF qualification level	Certificate I or II	1.2	1.0	1.2	0.6	1.0	0.2	0.1	0.1	5.4
	Certificate III	17.4	23.3	12.9	4.6	6.3	1.6	0.5	0.9	67.5
	Certificate IV	8.4	7.9	5.9	2.3	2.8	0.4	0.1	0.4	28.1
	Diploma/advanced diploma	3.5	5.9	4.2	1.2	1.3	0.4	0.1	0.2	16.9
Full-time status	Full-time	23.0	24.3	17.3	6.2	9.3	1.7	0.7	1.0	83.5
	Part-time	7.5	13.7	6.8	2.5	2.0	1.0	0.2	0.7	34.3
Existing worker	Existing worker	16.1	20.4	13.4	5.2	5.4	1.4	0.3	0.7	63.0
	Newly commencing worker	14.4	17.6	10.8	3.4	5.9	1.2	0.5	1.0	54.8
Total⁷		30.5	38.1	24.1	8.7	11.3	2.6	0.8	1.7	117.8

For notes on figures and tables, see page 20.

Table 4 Commencements² in each quarter by state/territory, 2007–12 ('000)

Quarter	NSW	Vic. ³	Qld	SA	WA	Tas.	NT	ACT	Australia
June 2007	17.1	17.6	15.6	4.8	5.2	1.9	0.5	1.0	63.7
September 2007	19.6	17.7	15.1	5.3	5.4	1.9	0.6	1.2	66.8
December 2007	18.3	14.7	12.5	4.1	5.1	1.8	0.5	0.9	57.9
March 2008	28.8	22.4	19.8	7.0	7.8	2.7	0.9	1.8	91.1
June 2008	22.3	18.6	17.2	5.4	6.0	2.1	0.7	1.1	73.3
September 2008	20.8	18.1	13.5	5.0	5.7	1.8	0.6	1.0	66.6
December 2008	18.2	16.0	10.6	4.6	5.4	1.7	0.4	0.8	57.8
March 2009	27.1	20.6	16.9	6.0	7.0	2.2	0.8	1.8	82.3
June 2009	18.5	17.2	12.9	5.2	5.3	1.7	0.6	1.1	62.6
September 2009	19.7	17.9	13.6	4.8	5.3	1.7	0.7	1.2	64.9
December 2009	20.3	16.8	12.4	4.2	5.4	1.4	0.6	0.9	61.9
March 2010	30.0	23.8	19.1	7.7	8.1	2.6	0.9	1.7	94.0
June 2010	21.7	19.9	15.5	5.5	6.2	1.9	0.6	1.1	72.5
September 2010	23.5	22.0	15.9	5.3	6.3	2.1	0.7	1.2	76.9
December 2010	22.2	19.9	14.0	5.4	6.7	1.9	0.5	0.9	71.5
March 2011	29.6	27.5	18.8	7.2	8.1	2.2	1.1	1.8	96.4
June 2011	19.7	24.7	16.2	5.8	6.4	1.9	0.6	1.1	76.2
September 2011	22.1	22.5	16.1	5.8	6.3	2.1	0.5	1.2	76.5
December 2011	20.6	21.9	13.7	5.5	6.6	1.7	0.4	1.0	71.4
March 2012	31.1	26.6	21.9	7.9	9.4	2.6	1.0	2.0	102.5
June 2012	30.5	38.1	24.1	8.7	11.3	2.6	0.8	1.7	117.8

For notes on figures and tables, see page 20.

Table 5 Completions by state/territory and selected training characteristics, June quarter 2012 ('000)

		NSW	Vic.	Qld	SA	WA	Tas.	NT	ACT	Australia
Age	19 years and under	1.1	2.6	1.8	0.5	0.6	0.2	0.0	0.0	6.9
	20 to 24 years	3.2	3.6	2.4	1.0	1.2	0.3	0.1	0.1	11.9
	25 to 44 years	4.5	4.4	3.4	1.1	1.4	0.4	0.1	0.1	15.4
	45 years and over	2.7	2.3	1.6	0.6	0.6	0.2	0.0	0.0	8.1
Sex	Male	6.2	6.7	5.1	1.9	2.4	0.6	0.2	0.2	23.2
	Female	5.4	6.2	4.1	1.3	1.5	0.5	0.1	0.2	19.3
Occupation (ANZSCO) group	Managers and professionals	0.6	1.0	0.9	0.3	0.1	0.1	-	0.0	3.0
	Technicians and trades workers	3.0	3.0	2.9	1.0	1.6	0.3	0.1	0.1	12.0
	Community and personal service workers	1.8	1.8	1.1	0.2	0.6	0.2	0.0	0.1	5.8
	Clerical and administrative workers	2.8	2.1	1.7	0.7	0.5	0.2	0.0	0.1	8.0
	Sales workers	1.4	3.1	1.2	0.6	0.3	0.2	0.0	0.0	6.8
	Machinery operators and drivers	1.2	0.7	0.7	0.2	0.5	0.0	0.1	0.0	3.3
	Labourers	0.9	1.3	0.7	0.2	0.3	0.1	0.0	0.0	3.5
AQF qualification level	Certificate I or II	0.6	0.6	0.8	0.3	0.4	0.2	0.0	0.0	2.9
	Certificate III	7.4	9.4	5.7	2.0	2.6	0.7	0.3	0.2	28.3
	Certificate IV	3.0	1.9	1.8	0.6	0.7	0.1	0.0	0.1	8.2
	Diploma/advanced diploma	0.5	1.0	0.8	0.3	0.2	0.1	-	0.0	3.0
Actual duration of training	Two years or less	9.3	10.8	7.1	2.3	2.8	0.8	0.2	0.2	33.5
	More than two years	2.3	2.1	2.1	0.8	1.1	0.3	0.1	0.1	8.9
Full-time status	Full-time	9.4	8.1	6.8	2.5	3.2	0.8	0.3	0.2	31.3
	Part-time	2.2	4.8	2.4	0.7	0.6	0.3	0.0	0.1	11.1
Total⁷		11.6	12.9	9.2	3.1	3.8	1.1	0.3	0.3	42.4

For notes on figures and tables, see page 20.

A dash (-) represents a true zero figure, with no contracts reported in these categories.

Table 6 Completions in each quarter by state/territory, 2007–12 ('000)

Quarter	NSW	Vic.	Qld	SA	WA	Tas.	NT	ACT	Australia
June 2007	9.4	9.6	7.7	3.1	2.3	1.1	0.2	0.5	33.9
September 2007	9.4	9.9	7.0	2.6	2.7	1.1	0.3	0.6	33.5
December 2007	9.7	12.1	9.9	3.2	3.2	1.4	0.3	0.8	40.5
March 2008	13.4	9.7	7.4	3.2	3.1	1.3	0.2	0.5	38.9
June 2008	10.7	9.3	8.7	2.5	2.7	1.3	0.2	0.5	36.0
September 2008	10.5	9.5	7.9	2.6	3.0	1.3	0.2	0.6	35.5
December 2008	11.9	12.1	10.5	3.3	3.8	1.7	0.4	0.9	44.6
March 2009	14.4	10.1	7.9	3.0	3.3	1.3	0.2	0.5	40.7
June 2009	10.8	9.6	8.3	2.7	3.5	1.2	0.2	0.6	36.9
September 2009	11.2	10.2	7.9	2.7	3.6	1.2	0.3	0.5	37.6
December 2009	12.4	12.8	10.4	3.2	4.2	1.4	0.4	0.8	45.6
March 2010	14.7	11.0	7.8	3.2	4.2	1.2	0.3	0.5	42.9
June 2010	11.7	10.1	8.3	2.8	3.6	1.1	0.3	0.5	38.5
September 2010	11.8	10.5	8.9	2.7	4.0	1.2	0.3	0.4	39.9
December 2010	12.9	13.6	11.3	3.4	4.2	1.5	0.4	0.5	47.9
March 2011	15.3	11.0	8.7	3.4	3.6	1.0	0.4	0.4	43.7
June 2011	12.3	11.1	8.9	2.7	3.6	1.1	0.3	0.5	40.5
September 2011	12.7	12.0	9.9	2.9	4.1	1.4	0.3	0.2	43.6
December 2011	14.6	16.0	11.9	3.1	4.4	1.7	0.5	0.3	52.5
March 2012	15.8	12.4	9.6	3.6	3.7	1.3	0.3	0.6	47.3
June 2012	11.6	12.9	9.2	3.1	3.8	1.1	0.3	0.3	42.4

For notes on figures and tables, see page 20.

Table 7 Cancellations and withdrawals⁴ by state/territory and selected training characteristics, June quarter 2012 ('000)

		NSW	Vic.	Qld	SA	WA	Tas.	NT	ACT	Australia
Age	19 years and under	3.4	3.4	2.5	0.7	1.2	0.2	0.2	0.2	11.6
	20 to 24 years	3.0	2.8	1.5	0.5	0.8	0.2	0.2	0.2	9.1
	25 to 44 years	2.9	2.9	1.8	0.7	0.9	0.2	0.2	0.1	9.6
	45 years and over	1.0	1.2	0.6	0.3	0.3	0.1	0.1	0.0	3.5
Sex	Male	6.1	6.2	3.8	1.4	2.0	0.4	0.4	0.3	20.6
	Female	4.2	4.1	2.5	0.7	1.1	0.3	0.3	0.2	13.4
Occupation (ANZSCO) group	Managers and professionals	0.5	1.0	0.5	0.1	0.1	0.1	0.0	0.0	2.3
	Technicians and trades workers	4.2	3.8	3.0	0.8	1.4	0.3	0.2	0.3	14.1
	Community and personal service workers	1.6	1.6	0.6	0.1	0.4	0.1	0.1	0.1	4.6
	Clerical and administrative workers	1.7	1.5	0.8	0.4	0.3	0.1	0.1	0.0	5.0
	Sales workers	1.1	1.2	0.7	0.4	0.2	0.1	0.1	0.0	3.9
	Machinery operators and drivers	0.6	0.3	0.3	0.2	0.3	0.0	0.0	0.0	1.7
	Labourers	0.5	0.8	0.4	0.2	0.3	0.0	0.0	0.0	2.4
AQF qualification level	Certificate I or II	0.6	0.4	0.6	0.2	0.4	0.1	0.1	0.0	2.3
	Certificate III	7.5	7.5	4.5	1.5	2.2	0.5	0.4	0.4	24.6
	Certificate IV	1.6	1.4	0.8	0.3	0.4	0.1	0.0	0.0	4.7
	Diploma/advanced diploma	0.5	1.1	0.5	0.1	0.1	0.1	0.0	0.0	2.4
Duration until cancelled/withdrawn	Two years or less	9.6	9.7	5.8	2.0	3.0	0.7	0.5	0.5	31.6
	More than two years	0.7	0.6	0.5	0.2	0.2	0.1	0.1	0.0	2.4
Full-time status	Full-time	7.8	7.1	4.6	1.5	2.6	0.6	0.5	0.4	25.0
	Part-time	2.4	3.2	1.7	0.6	0.6	0.2	0.1	0.1	8.9
Total⁷		10.3	10.3	6.3	2.1	3.1	0.7	0.6	0.5	34.0

For notes on figures and tables, see page 20.

Table 8 Cancellations and withdrawals⁴ in each quarter by state/territory, 2007–12 ('000)

Quarter	NSW	Vic.	Qld	SA	WA	Tas.	NT	ACT	Australia
June 2007	9.8	8.6	7.1	1.9	2.4	0.9	0.4	0.8	31.9
September 2007	9.8	8.9	7.6	1.9	2.5	0.8	0.4	0.8	32.7
December 2007	10.2	8.8	8.0	2.0	2.6	0.9	0.4	0.8	33.7
March 2008	10.4	8.7	7.8	2.0	2.6	0.9	0.4	0.7	33.5
June 2008	10.4	8.1	7.9	1.8	2.9	0.8	0.4	0.7	33.1
September 2008	10.6	9.2	7.7	1.9	2.7	0.9	0.4	0.7	34.1
December 2008	10.4	9.3	7.7	1.8	2.7	0.9	0.4	0.7	33.9
March 2009	10.4	8.5	7.0	1.8	2.2	0.8	0.4	0.6	31.8
June 2009	10.1	7.8	6.3	1.6	2.5	0.8	0.4	0.6	30.1
September 2009	9.9	7.8	6.6	1.8	2.4	0.7	0.3	0.6	30.1
December 2009	9.8	8.3	7.1	1.9	2.5	0.7	0.4	0.6	31.3
March 2010	10.4	8.7	6.9	1.9	2.6	0.8	0.4	0.7	32.3
June 2010	10.4	8.6	6.6	1.7	2.6	0.8	0.4	0.6	31.5
September 2010	10.8	8.9	6.7	1.9	2.7	0.8	0.4	0.6	32.8
December 2010	11.0	9.4	7.3	1.9	2.9	0.9	0.4	0.7	34.6
March 2011	11.6	9.5	7.2	1.8	3.0	0.8	0.4	0.6	34.9
June 2011	10.8	10.0	6.8	1.9	3.0	0.8	0.4	0.6	34.3
September 2011	11.6	10.0	7.4	2.0	3.2	0.8	0.4	0.7	36.3
December 2011	10.7	9.8	7.3	1.9	3.3	0.8	0.4	0.6	34.8
March 2012	11.3	9.9	7.0	2.0	3.3	0.9	0.5	0.6	35.4
June 2012	10.3	10.3	6.3	2.1	3.1	0.7	0.6	0.5	34.0

For notes on figures and tables, see page 20.

Table 9 In-training as at the end of each quarter by selected training characteristics, Australia, 2007–12 ('000)

		June 2007	Sept. 2007	Dec. 2007	Mar. 2008	June 2008	Sept. 2008	Dec. 2008	Mar. 2009
Age	19 years and under	140.9	138.4	131.6	149.9	148.6	144.2	134.0	143.8
	20 to 24 years	112.3	115.8	113.5	112.8	114.6	116.5	112.6	110.4
	25 to 44 years	113.3	115.8	112.7	116.6	120.5	122.6	118.9	121.7
	45 years and over	47.4	48.1	46.5	47.4	50.3	51.1	49.7	51.4
Sex	Male	278.6	281.2	273.2	289.0	291.0	290.9	278.6	285.0
	Female	135.4	136.9	131.2	137.7	143.0	143.4	136.6	142.3
Occupation (ANZSCO) group	Managers and professionals	10.2	11.9	12.2	13.6	14.4	15.4	14.3	14.5
	Technicians and trades workers	195.3	197.3	194.5	208.9	209.3	207.7	201.0	207.3
	Community and personal service workers	45.3	46.0	43.5	45.1	46.4	46.4	44.2	47.1
	Clerical and administrative workers	54.5	54.9	52.1	54.6	58.4	58.4	55.1	58.0
	Sales workers	44.0	44.6	42.4	44.5	45.3	45.7	43.6	44.2
	Machinery operators and drivers	37.7	37.1	35.3	34.9	35.1	36.0	33.5	32.5
	Labourers	27.1	26.3	24.5	25.0	25.1	24.8	23.4	23.7
AQF qualification level	Certificate I or II	41.6	40.8	37.2	39.3	40.3	39.6	36.2	37.2
	Certificate III	323.1	325.9	317.0	333.8	335.3	334.9	319.8	325.3
	Certificate IV	46.7	48.6	47.1	49.8	54.1	55.3	54.6	59.7
	Diploma/advanced diploma	2.3	2.7	3.0	3.8	4.3	4.6	4.6	5.1
Full-time status	Full-time	330.4	333.4	324.6	341.0	344.1	342.6	327.8	334.6
	Part-time	83.6	84.7	79.8	85.7	89.9	91.8	87.4	92.8
Total⁷		414.0	418.1	404.4	426.7	434.0	434.4	415.2	427.3

For notes on figures and tables, see page 20.

Table 10 Commencements^{2,3} in each quarter by selected training characteristics, Australia, 2007–12 ('000)

		June 2007	Sept. 2007	Dec. 2007	Mar. 2008	June 2008	Sept. 2008	Dec. 2008	Mar. 2009
Age	19 years and under	24.0	23.3	23.8	46.4	25.9	22.9	22.1	37.7
	20 to 24 years	11.5	12.8	9.9	14.5	12.3	12.3	9.5	13.0
	25 to 44 years	19.8	22.0	17.2	22.2	23.6	22.2	18.2	22.2
	45 years and over	8.4	8.8	7.1	7.9	11.5	9.2	8.0	9.4
Sex	Male	35.7	38.6	33.3	56.6	39.8	37.7	32.3	48.7
	Female	28.0	28.2	24.6	34.4	33.6	28.9	25.4	33.7
Occupation (ANZSCO) group	Managers and professionals	2.4	3.0	2.2	2.9	2.8	3.0	1.9	2.4
	Technicians and trades workers	15.4	17.8	17.1	36.5	18.5	16.3	15.3	30.0
	Community and personal service workers	10.0	10.1	8.9	11.8	11.6	10.3	9.4	12.8
	Clerical and administrative workers	12.5	12.4	10.1	15.0	16.0	12.6	10.7	15.0
	Sales workers	9.6	10.3	8.4	12.2	10.9	10.8	9.5	10.5
	Machinery operators and drivers	7.4	7.2	5.9	5.9	7.1	7.6	5.3	5.4
	Labourers	6.4	5.9	5.3	6.8	6.5	5.9	5.7	6.3
AQF qualification level	Certificate I or II	10.4	9.6	9.1	12.6	11.0	9.5	9.3	10.8
	Certificate III	44.3	46.7	41.1	66.4	48.5	45.9	38.6	56.3
	Certificate IV	8.4	9.8	7.2	11.0	12.9	10.3	9.1	14.2
	Diploma/advanced diploma	0.7	0.7	0.6	1.2	0.9	0.9	0.7	1.1
Full-time status	Full-time	45.7	49.4	41.7	69.1	52.0	47.0	39.4	60.0
	Part-time	18.0	17.4	16.2	22.0	21.4	19.6	18.4	22.4
Existing worker	Existing worker	17.9	19.6	14.9	18.7	23.2	19.6	16.5	21.8
	Newly commencing worker	45.8	47.2	43.0	72.3	50.2	47.0	41.3	60.6
Total⁷		63.7	66.8	57.9	91.1	73.3	66.6	57.8	82.3

For notes on figures and tables, see page 20.

Table 9 (continued)

June 2009	Sept. 2009	Dec. 2009	Mar. 2010	June 2010	Sept. 2010	Dec. 2010	Mar. 2011	June 2011	Sept. 2011	Dec. 2011	Mar. 2012	June 2012
137.9	131.6	124.2	139.6	136.5	133.1	126.0	139.6	137.0	129.8	120.1	133.4	133.9
110.5	113.1	110.7	110.8	113.7	117.6	115.4	116.0	118.6	120.8	118.1	117.9	125.0
123.3	125.2	122.6	127.8	131.6	136.5	136.1	141.0	143.8	147.2	146.3	152.7	175.3
52.7	54.2	53.6	55.2	56.5	59.1	59.8	61.8	63.4	65.2	64.7	67.8	80.7
281.5	279.9	273.0	288.0	290.1	293.8	288.6	301.5	301.6	300.5	291.0	303.5	325.4
142.8	144.3	138.1	145.5	148.3	152.5	148.8	157.0	161.1	162.6	158.2	168.4	189.5
13.9	13.3	11.9	13.0	14.6	17.2	19.3	23.7	27.8	31.3	34.9	39.6	49.4
203.3	202.0	198.3	210.8	210.6	211.0	206.9	216.2	214.3	211.1	203.3	210.7	212.8
47.9	48.1	45.3	47.4	47.1	48.6	45.8	49.9	51.1	51.6	48.2	52.4	59.0
59.7	61.4	59.9	63.4	65.2	67.4	66.3	68.3	68.1	67.9	64.2	67.1	76.0
43.6	43.6	41.6	43.4	44.7	45.6	43.8	44.3	45.4	44.5	43.1	44.9	52.7
31.7	31.2	31.5	31.4	31.1	30.4	30.1	30.0	29.8	29.8	28.8	29.3	32.7
24.3	24.6	22.7	24.0	25.1	26.1	25.2	26.2	26.4	26.9	26.8	27.7	32.3
36.9	35.2	31.4	33.0	33.2	32.2	28.9	30.5	28.9	25.7	20.9	21.7	21.9
318.6	315.2	306.5	321.4	321.7	323.5	315.7	328.3	329.0	327.7	317.0	330.2	348.8
63.4	67.6	67.1	71.0	73.3	76.9	76.2	78.2	78.9	79.7	77.0	80.5	93.8
5.4	6.0	6.0	8.0	10.2	13.7	16.6	21.5	25.9	30.0	34.2	39.5	50.4
328.8	327.3	319.4	336.0	339.0	344.4	339.9	354.0	354.2	353.3	344.2	356.7	385.4
95.5	96.8	91.7	97.4	99.4	101.9	97.4	104.5	108.6	109.7	105.0	115.2	129.5
424.3	424.1	411.1	433.5	438.4	446.3	437.4	458.5	462.7	463.0	449.2	471.9	514.9

Table 10 (continued)

June 2009	Sept. 2009	Dec. 2009	Mar. 2010	June 2010	Sept. 2010	Dec. 2010	Mar. 2011	June 2011	Sept. 2011	Dec. 2011	Mar. 2012	June 2012
20.2	19.9	23.3	43.4	23.1	23.6	25.7	42.0	24.7	21.6	23.2	42.2	26.6
10.6	11.8	10.2	15.0	13.2	14.2	12.0	16.1	14.0	14.2	12.2	16.9	18.9
21.7	22.8	19.1	25.4	25.0	26.8	23.0	27.1	25.8	27.8	24.9	30.5	47.6
10.1	10.5	9.3	10.2	11.1	12.4	10.9	11.2	11.7	12.9	11.1	12.8	24.7
34.0	34.9	35.3	57.5	40.1	42.3	40.5	57.2	41.0	42.5	39.4	59.8	64.0
28.6	30.0	26.6	36.6	32.4	34.5	31.0	39.2	35.3	34.0	32.0	42.6	53.8
1.9	1.8	1.5	3.5	3.7	5.2	5.3	7.1	7.2	7.4	8.7	9.9	15.8
14.8	15.8	17.8	36.9	19.2	19.8	20.5	34.7	19.1	19.6	18.2	35.3	24.0
10.6	10.4	9.4	12.7	9.8	11.6	9.8	14.4	11.6	11.1	10.5	15.1	16.5
14.0	14.6	12.6	16.3	15.3	15.6	13.8	16.3	14.2	14.4	12.0	17.1	23.1
9.7	10.6	9.4	12.3	12.3	12.3	10.9	12.0	12.5	11.1	10.1	12.4	18.8
5.6	5.7	5.9	5.5	5.9	5.6	5.4	5.3	5.3	5.6	4.9	5.8	8.8
6.0	6.1	5.3	6.8	6.3	6.8	5.9	6.5	6.2	7.3	7.1	6.9	10.7
8.8	8.3	8.1	10.8	8.7	8.0	7.9	10.1	6.7	5.0	4.3	7.2	5.4
39.6	40.4	40.8	65.3	45.6	47.7	45.7	64.4	48.3	49.3	45.9	68.1	67.5
13.2	14.9	12.1	15.1	14.9	16.2	12.9	15.0	14.4	14.9	12.5	17.0	28.1
1.0	1.3	0.9	2.8	3.2	4.9	5.0	6.8	6.9	7.4	8.7	10.1	16.9
42.2	44.5	42.7	69.2	51.4	53.6	49.6	69.2	51.2	53.6	48.5	71.7	83.5
20.4	20.4	19.2	24.8	21.1	23.3	21.9	27.2	25.0	22.9	22.9	30.8	34.3
22.4	24.0	20.2	24.3	26.8	27.8	24.9	27.6	27.8	30.2	28.0	33.2	63.0
40.1	40.9	41.7	69.7	45.7	49.1	46.6	68.7	48.4	46.3	43.5	69.3	54.8
62.6	64.9	61.9	94.0	72.5	76.9	71.5	96.4	76.2	76.5	71.4	102.5	117.8

Table 11 Completions in each quarter by selected training characteristics, Australia, 2007–12 ('000)

		June 2007	Sept. 2007	Dec. 2007	Mar. 2008	June 2008	Sept. 2008	Dec. 2008	Mar. 2009
Age	19 years and under	5.4	5.4	9.1	7.5	6.3	6.5	10.5	7.8
	20 to 24 years	10.2	10.2	11.8	15.1	11.0	10.9	13.0	15.1
	25 to 44 years	12.1	11.8	12.8	11.0	12.1	12.1	13.8	12.1
	45 years and over	6.2	6.0	6.8	5.2	6.6	6.1	7.3	5.7
Sex	Male	19.0	18.9	22.5	23.4	19.8	19.8	25.4	24.8
	Female	14.9	14.6	17.9	15.4	16.2	15.8	19.3	15.8
Occupation (ANZSCO) group	Managers and professionals	0.8	0.7	1.0	0.7	1.2	1.1	2.0	1.1
	Technicians and trades workers	7.9	8.1	10.4	13.8	9.1	9.0	11.9	14.8
	Community and personal service workers	5.3	5.3	7.2	5.9	6.3	6.0	6.9	5.6
	Clerical and administrative workers	6.7	6.6	7.7	7.2	6.9	7.1	8.6	7.2
	Sales workers	4.6	4.8	5.2	4.3	5.1	5.3	6.2	4.7
	Machinery operators and drivers	5.0	4.8	4.9	3.6	4.1	3.9	5.0	3.9
	Labourers	3.6	3.3	3.9	3.3	3.3	3.1	4.1	3.4
AQF qualification level	Certificate I or II	4.8	4.8	6.7	5.0	4.8	5.0	7.0	4.8
	Certificate III	24.7	24.1	28.4	29.2	26.0	25.3	31.2	30.6
	Certificate IV	4.2	4.4	5.2	4.5	4.9	5.0	6.0	4.9
	Diploma/advanced diploma	0.1	0.1	0.2	0.2	0.2	0.2	0.4	0.3
Actual duration of training	Two years or less	25.8	25.3	30.7	26.2	27.4	26.9	33.9	27.5
	More than two years	8.0	8.1	9.8	12.7	8.6	8.6	10.7	13.1
Full-time status	Full-time	26.3	25.8	28.9	31.8	27.3	26.9	32.2	33.0
	Part-time	7.6	7.7	11.6	7.1	8.7	8.7	12.4	7.7
Total⁷		33.9	33.5	40.5	38.9	36.0	35.5	44.6	40.7

For notes on figures and tables, see page 20.

Table 12 Cancellations and withdrawals⁴ in each quarter by selected training characteristics, Australia, 2007–12 ('000)

		June 2007	Sept. 2007	Dec. 2007	Mar. 2008	June 2008	Sept. 2008	Dec. 2008	Mar. 2009
Age	19 years and under	12.2	12.4	13.5	13.6	13.1	13.0	13.5	12.6
	20 to 24 years	8.3	8.6	8.8	8.8	8.4	8.7	8.7	8.2
	25 to 44 years	8.5	8.9	8.6	8.5	8.8	9.3	8.9	8.3
	45 years and over	2.9	2.9	2.8	2.6	2.8	3.0	2.8	2.7
Sex	Male	19.5	20.1	20.8	20.5	20.5	21.0	20.8	19.6
	Female	12.4	12.6	12.9	12.9	12.6	13.1	13.1	12.2
Occupation (ANZSCO) group	Managers and professionals	0.6	0.8	0.8	0.8	0.8	0.9	1.0	0.9
	Technicians and trades workers	12.0	12.3	13.0	13.1	13.5	13.7	13.4	12.9
	Community and personal service workers	4.2	4.1	4.3	4.2	4.1	4.3	4.5	4.2
	Clerical and administrative workers	4.8	4.9	4.7	4.7	4.8	4.9	4.6	4.4
	Sales workers	4.6	4.7	5.1	5.4	4.7	4.8	5.1	4.7
	Machinery operators and drivers	2.7	2.7	2.7	2.5	2.5	2.6	2.5	2.1
	Labourers	3.0	3.2	3.1	2.8	2.8	3.0	3.0	2.5
AQF qualification level	Certificate I or II	5.0	5.2	5.6	5.2	4.7	4.9	5.3	4.6
	Certificate III	23.5	24.1	24.8	25.0	24.9	25.5	25.1	23.3
	Certificate IV	3.2	3.1	3.0	3.1	3.1	3.4	3.1	3.5
	Diploma/advanced diploma	0.2	0.2	0.2	0.2	0.3	0.3	0.4	0.4
Duration until cancelled/withdrawn	Two years or less	29.4	30.3	31.4	31.2	30.7	31.7	31.7	29.4
	More than two years	2.5	2.4	2.2	2.3	2.4	2.4	2.2	2.3
Full-time status	Full-time	23.9	24.4	24.4	24.9	25.0	25.5	24.2	23.1
	Part-time	8.0	8.3	9.2	8.6	8.1	8.6	9.8	8.7
Total⁷		31.9	32.7	33.7	33.5	33.1	34.1	33.9	31.8

For notes on figures and tables, see page 20.

Table 11 (continued)

June 2009	Sept. 2009	Dec. 2009	Mar. 2010	June 2010	Sept. 2010	Dec. 2010	Mar. 2011	June 2011	Sept. 2011	Dec. 2011	Mar. 2012	June 2012
6.5	7.2	10.8	8.5	6.6	7.5	11.8	8.4	7.3	8.3	12.8	8.5	6.9
11.1	11.0	12.8	15.4	11.2	11.4	13.7	15.3	11.6	12.0	13.9	16.8	11.9
12.8	12.8	14.3	12.7	13.3	13.8	15.0	13.6	14.3	15.2	16.8	15.1	15.4
6.5	6.5	7.7	6.3	7.4	7.2	7.5	6.4	7.4	8.1	9.0	6.9	8.1
20.6	20.6	25.0	25.8	21.1	21.9	26.5	26.0	22.5	24.8	29.2	28.3	23.2
16.2	17.0	20.6	17.0	17.4	17.9	21.4	17.7	18.0	18.8	23.4	19.0	19.3
1.4	1.3	2.1	1.4	1.1	1.4	1.8	1.4	1.5	2.0	3.2	2.8	3.0
9.8	9.7	12.5	16.0	10.9	11.4	14.2	15.8	11.5	13.1	15.0	17.8	12.0
5.9	6.1	7.6	6.0	5.6	5.8	8.2	5.8	5.7	5.7	9.2	6.2	5.8
7.3	7.5	9.2	7.5	7.9	7.8	9.2	8.3	8.3	8.3	10.2	8.4	8.0
5.2	6.1	6.4	5.7	6.3	6.7	7.3	6.4	6.7	7.2	7.2	5.9	6.8
4.4	3.9	3.5	3.5	3.9	3.9	3.5	3.2	3.2	3.4	3.5	3.1	3.3
3.0	3.2	4.2	2.8	2.9	2.9	3.8	2.7	3.5	4.0	4.2	3.2	3.5
4.8	5.5	7.0	4.8	4.5	4.9	6.6	4.4	4.6	4.5	5.7	3.4	2.9
26.6	25.9	30.1	31.4	26.2	27.0	31.9	31.1	27.1	29.3	34.4	33.6	28.3
5.1	5.9	8.0	6.2	7.4	7.2	8.2	7.4	7.6	8.0	9.7	7.7	8.2
0.3	0.3	0.6	0.4	0.5	0.7	1.1	0.9	1.2	1.7	2.7	2.6	3.0
28.2	28.7	35.0	29.3	29.4	29.9	36.3	31.1	31.4	33.8	41.4	33.0	33.5
8.7	8.9	10.6	13.6	9.1	10.0	11.6	12.6	9.1	9.7	11.1	14.3	8.9
28.0	27.4	31.8	33.7	28.6	28.7	32.5	34.1	29.4	31.9	35.7	37.0	31.3
8.8	10.1	13.8	9.2	9.9	11.1	15.4	9.6	11.1	11.6	16.8	10.3	11.1
36.9	37.6	45.6	42.9	38.5	39.9	47.9	43.7	40.5	43.6	52.5	47.3	42.4

Table 12 (continued)

June 2009	Sept. 2009	Dec. 2009	Mar. 2010	June 2010	Sept. 2010	Dec. 2010	Mar. 2011	June 2011	Sept. 2011	Dec. 2011	Mar. 2012	June 2012
11.2	10.7	11.7	12.3	11.3	11.2	12.4	12.6	11.7	12.3	12.3	12.7	11.6
7.6	7.5	8.0	8.2	8.0	8.5	9.0	9.1	9.0	9.5	9.1	9.3	9.1
8.2	8.8	8.6	8.8	9.0	9.6	9.7	9.8	10.1	10.8	10.0	10.1	9.6
3.0	3.2	3.0	3.0	3.1	3.5	3.5	3.5	3.5	3.7	3.4	3.4	3.5
18.5	18.4	19.2	19.8	19.3	19.9	21.2	21.3	20.9	22.0	21.4	21.5	20.6
11.6	11.7	12.1	12.5	12.2	12.9	13.4	13.6	13.4	14.3	13.4	13.9	13.4
0.9	1.0	0.7	0.9	0.9	1.0	1.3	1.3	1.5	1.9	1.9	2.0	2.3
12.4	11.9	12.3	13.3	12.8	12.9	13.7	14.2	13.7	14.6	14.2	14.3	14.1
3.9	4.1	4.5	4.5	4.3	4.3	4.4	4.5	4.7	5.0	4.8	5.0	4.6
4.3	4.5	4.5	4.8	4.9	5.2	5.2	5.3	5.4	5.5	4.9	5.0	5.0
4.5	4.0	4.5	4.4	4.3	4.4	5.0	4.8	4.4	4.5	4.2	4.6	3.9
1.8	1.9	2.0	1.9	2.0	2.2	2.1	2.1	2.1	1.9	2.1	1.9	1.7
2.2	2.6	2.8	2.6	2.2	2.9	2.9	2.7	2.5	2.9	2.8	2.7	2.4
4.0	4.1	4.6	4.1	3.8	3.8	4.1	3.9	3.4	3.4	3.1	2.9	2.3
22.0	21.4	22.1	23.3	22.6	23.3	24.5	25.0	24.4	25.9	25.2	25.8	24.6
3.7	4.1	4.2	4.4	4.6	4.9	4.9	4.9	5.2	5.3	4.8	4.8	4.7
0.4	0.4	0.4	0.5	0.6	0.7	1.0	1.1	1.4	1.7	1.7	2.0	2.4
27.6	27.9	29.0	29.9	29.0	30.3	32.2	32.5	32.0	34.1	32.8	33.2	31.6
2.4	2.2	2.3	2.4	2.5	2.6	2.4	2.4	2.4	2.1	2.0	2.2	2.4
21.8	21.7	21.7	23.1	23.0	23.9	24.6	25.2	24.9	26.4	24.6	25.5	25.0
8.1	8.4	9.6	9.2	8.6	9.0	10.0	9.8	9.4	9.8	10.3	9.9	8.9
30.1	30.1	31.3	32.3	31.5	32.8	34.6	34.9	34.3	36.3	34.8	35.4	34.0

Table 13 In-training in top 20 training packages by state/territory, as at 30 June 2012 ('000)

Training package	NSW	Vic.	Qld	SA	WA	Tas.	NT	ACT	Australia
Business Services (BSA, BSB)	31.0	24.2	23.6	9.2	4.9	2.6	0.4	1.4	97.2
Construction, Plumbing & Services Integrated Framework (BCF, BCG, BCP, CPC)	13.3	17.0	8.7	3.0	4.0	1.4	0.4	1.3	49.1
Retail Services (SIR, WRP, WRR, WRW)	12.8	15.9	7.4	4.9	2.0	1.2	0.2	0.6	45.1
Tourism, Hospitality and Events (SIT, THH, THT)	13.1	11.7	6.8	1.8	2.9	1.3	0.3	1.1	38.9
Electrotechnology (UEE, UTE, UTL)	8.7	7.5	7.2	2.5	4.2	0.6	0.5	0.7	31.9
Automotive Industry Retail, Service and Repair (AUR)	9.6	6.8	6.1	2.6	3.8	0.6	0.4	0.5	30.5
Transport and Logistics (TDT, TLI)	11.2	7.0	4.6	2.9	3.5	0.5	0.1	0.3	30.2
Community Services (CHC)	11.2	6.0	5.3	1.5	2.5	1.1	0.5	1.5	29.6
Metal and Engineering (MEM)	5.6	4.5	8.1	1.6	5.0	0.7	0.2	0.1	25.7
Manufacturing (MCM, MSA)	5.6	11.6	2.7	1.0	1.9	0.1	0.0	-	22.9
Agriculture, Horticulture and Conservation and Land Management (AHC, RTD, RTE, RTF, RUA, RUH)	3.5	3.9	2.1	1.5	0.7	0.3	0.2	0.1	12.3
Resources and Infrastructure (BCC, DRT, MNC, MNM, MNQ, RII)	3.2	0.9	3.3	1.0	2.1	0.3	0.2	0.0	11.2
Hairdressing (SIH, WRH)	3.1	2.0	2.7	0.8	1.2	0.3	0.1	0.4	10.5
Financial Services (FNA, FNB, FNS)	3.1	1.8	2.0	0.6	0.4	0.1	0.1	0.1	8.1
Food Processing Industry (FDF)	2.3	2.8	1.3	0.8	0.5	0.2	0.0	0.1	7.9
Health (HLT)	3.9	2.5	0.7	0.2	0.3	0.2	0.0	0.2	7.9
Australian Meat Industry (MTM)	2.1	1.6	2.0	1.0	0.6	0.2	0.0	0.1	7.5
Sport, Fitness and Recreation (SIS, SRC, SRF, SRO, SRS)	0.7	2.4	2.2	0.2	0.3	0.0	0.0	0.1	5.9
Furnishing (LMF)	1.4	1.7	1.2	0.4	0.7	0.2	0.1	0.1	5.8
Asset Maintenance (PRM)	1.8	0.8	0.9	0.3	0.2	0.2	0.0	0.5	4.6
Top 20 training packages sub-total	147.4	132.5	98.8	37.7	41.4	12.2	3.8	9.1	483.0
Other training packages	10.0	4.6	6.9	2.7	3.9	0.9	0.4	1.6	31.1
All training packages	157.4	137.1	105.7	40.4	45.4	13.1	4.2	10.7	514.0
Non-training packages	0.2	0.1	0.2	0.0	0.2	0.0	0.0	0.0	0.9
Total number	157.6	137.3	105.9	40.4	45.6	13.1	4.2	10.7	514.9
Training packages as proportion of total (%)	99.9	99.9	99.8	100.0	99.5	99.9	100.0	100.0	99.8

A dash (-) represents a true zero figure, with no contracts reported in these categories.

For notes on figures and tables, see page 20.

Table 14 Commencements² in top 20 training packages by state/territory, June quarter 2012 ('000)

Training package	NSW	Vic. ³	Qld	SA	WA	Tas.	NT	ACT	Australia
Business Services (BSA, BSB)	9.1	9.3	7.9	2.7	2.2	0.6	0.1	0.4	32.4
Retail Services (SIR, WRP, WRR, WRW)	3.7	7.4	2.4	1.4	0.7	0.4	0.1	0.2	16.2
Tourism, Hospitality and Events (SIT, THH, THT)	2.4	4.1	1.8	0.4	1.4	0.4	0.1	0.2	10.6
Manufacturing (MCM, MSA)	2.2	4.9	1.0	0.3	0.9	0.1	0.0	-	9.3
Transport and Logistics (TDT, TLI)	2.4	2.8	1.5	0.8	1.1	0.1	0.0	0.1	8.8
Community Services (CHC)	2.6	1.4	1.3	0.4	0.7	0.2	0.1	0.2	7.1
Construction, Plumbing & Services Integrated Framework (BCF, BCG, BCP, CPC)	0.8	1.3	0.6	0.2	0.3	0.1	0.0	0.1	3.4
Automotive Industry Retail, Service and Repair (AUR)	0.7	0.9	0.6	0.4	0.3	0.0	0.1	0.1	3.2
Resources and Infrastructure (BCC, DRT, MNC, MNM, MNQ, RII)	0.6	0.3	1.0	0.1	0.5	0.1	0.1	0.0	2.7
Australian Meat Industry (MTM)	0.5	0.6	0.6	0.3	0.1	0.1	0.0	0.0	2.2
Agriculture, Horticulture and Conservation and Land Management (AHC, RTD, RTE, RTF, RUA, RUH)	0.5	0.5	0.5	0.3	0.2	0.1	0.0	0.0	2.1
Financial Services (FNA, FNB, FNS)	0.8	0.5	0.5	0.2	0.1	0.0	0.0	0.0	2.1
Food Processing Industry (FDF)	0.5	0.7	0.4	0.2	0.1	0.0	0.0	0.0	1.9
Electrotechnology (UEE, UTE, UTL)	0.3	0.5	0.5	0.2	0.2	0.0	0.0	0.0	1.7
Health (HLT)	0.6	0.7	0.2	0.0	0.1	0.0	0.0	0.1	1.7
Metal and Engineering (MEM)	0.3	0.3	0.6	0.1	0.4	0.1	0.0	0.0	1.7
Asset Maintenance (PRM)	0.4	0.3	0.2	0.1	0.1	0.1	0.0	0.1	1.3
Property Services (CPP, PRD, PRS)	0.4	0.1	0.4	0.0	0.2	0.0	0.0	0.0	1.2
Hairdressing (SIH, WRH)	0.3	0.2	0.3	0.1	0.1	0.0	0.0	0.0	1.0
Sport, Fitness and Recreation (SIS, SRC, SRF, SRO, SRS)	0.1	0.3	0.3	0.0	0.2	0.0	0.0	0.0	0.9
Top 20 training packages sub-total	29.0	37.1	22.5	8.2	10.1	2.4	0.8	1.6	111.5
Other training packages	1.5	1.0	1.6	0.5	1.2	0.2	0.0	0.1	6.1
All training packages	30.5	38.0	24.0	8.7	11.3	2.6	0.8	1.7	117.7
Non-training packages	0.0	0.0	0.1	0.0	0.0	-	-	-	0.1
Total number	30.5	38.1	24.1	8.7	11.3	2.6	0.8	1.7	117.8
Training packages as proportion of total (%)	100.0	100.0	99.6	100.0	100.0	100.0	100.0	100.0	99.9

A dash (-) represents a true zero figure, with no contracts reported in these categories.

For notes on figures and tables, see page 20.

Training activity: 12-month ending series

Table 15 Commencements^{2,3} by selected training characteristics, 12 months ending 30 June, Australia, 2007–12 ('000)

		12 months ending 30 June					
		2007	2008	2009	2010	2011	2012
Age	19 years and under	112.6	119.5	103.0	109.8	116.0	113.6
	20 to 24 years	47.3	49.4	45.4	50.2	56.3	62.1
	25 to 44 years	79.1	84.9	84.3	92.2	102.6	130.9
	45 years and over	32.5	35.3	36.7	41.2	46.1	61.6
Sex	Male	159.2	168.3	152.7	167.7	181.0	205.7
	Female	112.2	120.8	116.5	125.6	140.0	162.5
Occupation (ANZSCO) group	Managers and professionals	8.5	10.9	9.2	10.5	24.7	41.9
	Technicians and trades workers	80.8	89.9	76.4	89.7	94.0	97.0
	Community and personal service workers	40.2	42.5	43.1	42.3	47.4	53.2
	Clerical and administrative workers	49.5	53.5	52.4	58.9	59.9	66.6
	Sales workers	38.8	41.8	40.6	44.5	47.8	52.4
	Machinery operators and drivers	27.7	26.1	23.9	23.0	21.7	25.1
	Labourers	25.9	24.5	23.8	24.5	25.4	32.0
AQF qualification level	Certificate I or II	43.1	42.2	38.4	36.0	32.7	21.8
	Certificate III	191.8	202.6	180.4	192.1	206.0	230.7
	Certificate IV	34.9	40.9	46.7	57.0	58.6	72.6
	Diploma/advanced diploma	1.8	3.5	3.7	8.2	23.7	43.1
Full-time status	Full-time	200.0	212.2	188.5	207.8	223.6	257.3
	Part-time	71.5	76.9	80.8	85.5	97.3	110.9
Total⁷		271.5	289.1	269.3	293.3	321.0	368.2

For notes on figures and tables, see page 20.

Table 16 Completions by selected training characteristics, 12 months ending 30 June, Australia, 2007–12 ('000)

		12 months ending 30 June					
		2007	2008	2009	2010	2011	2012
Age	19 years and under	26.4	28.4	31.3	33.1	34.9	36.5
	20 to 24 years	45.2	48.1	50.1	50.4	51.9	54.7
	25 to 44 years	47.5	47.8	50.7	53.1	56.6	62.5
	45 years and over	24.9	24.5	25.5	27.9	28.4	32.1
Sex	Male	81.8	84.6	90.6	92.5	96.9	105.4
	Female	62.2	64.2	67.1	72.0	75.0	80.4
Occupation (ANZSCO) group	Managers and professionals	2.7	3.7	5.7	5.9	6.2	11.0
	Technicians and trades workers	37.1	41.5	45.5	49.1	52.9	57.9
	Community and personal service workers	22.5	24.6	24.4	25.3	25.4	27.0
	Clerical and administrative workers	28.3	28.4	30.1	32.0	33.6	34.9
	Sales workers	18.4	19.4	21.4	24.5	27.2	27.0
	Machinery operators and drivers	19.4	17.4	17.2	14.8	13.8	13.3
	Labourers	15.6	13.9	13.5	13.0	12.9	14.8
AQF qualification level	Certificate I or II	22.3	21.2	21.6	21.7	20.5	16.5
	Certificate III	103.8	107.7	113.7	113.6	117.1	125.6
	Certificate IV	17.3	19.1	21.1	27.5	30.4	33.7
	Diploma/advanced diploma	0.5	0.7	1.3	1.8	4.0	10.1
Actual duration of training	Two years or less	107.2	109.6	116.6	122.4	128.7	141.7
	More than two years	36.8	39.2	41.1	42.1	43.3	44.2
Full-time status	Full-time	110.8	113.8	120.1	121.5	124.7	135.9
	Part-time	33.2	35.0	37.6	43.0	47.3	49.9
Total⁷		144.0	148.8	157.7	164.6	172.0	185.8

For notes on figures and tables, see page 20.

Table 17 Commencements² by occupation and state/territory, 12 months ending 30 June 2012 ('000)

Occupation (ANZSCO) group	NSW	Vic. ³	Qld	SA	WA	Tas.	NT	ACT	Australia
Managers	9.4	12.3	8.9	3.1	2.7	0.9	0.2	0.9	38.4
11 Chief executives, general managers and legislators	-	-	-	-	-	-	-	-	-
12 Farmers and farm managers	0.5	0.6	0.3	0.3	0.1	0.1	0.1	-	1.9
13 Specialist managers	8.9	11.2	8.4	2.7	2.5	0.7	0.1	0.6	35.1
14 Hospitality, retail and service managers	0.1	0.4	0.3	0.2	0.0	0.1	-	0.3	1.4
Professionals	0.3	1.3	1.0	0.5	0.2	0.1	0.0	0.1	3.5
21 Arts and media professionals	-	0.0	0.0	-	-	-	-	-	0.0
22 Business, human resource and marketing professionals	0.2	1.1	0.4	0.1	0.2	0.0	0.0	0.0	2.0
23 Design, engineering, science and transport professionals	0.1	0.1	0.2	0.0	0.0	0.0	0.0	-	0.5
24 Education professionals	-	-	0.3	0.4	-	-	-	0.1	0.7
25 Health professionals	0.0	-	-	-	-	-	-	-	0.0
26 ICT professionals	0.0	0.0	-	0.0	-	0.0	-	0.0	0.1
27 Legal, social and welfare professionals	0.0	0.1	0.0	-	0.0	-	-	-	0.1
Technicians and trades workers	27.0	23.8	22.9	6.8	12.1	2.2	1.0	1.3	97.0
31 Engineering, ICT and science technicians	1.6	1.5	3.3	0.8	1.8	0.2	0.1	0.1	9.5
32 Automotive and engineering	6.2	4.0	6.0	1.5	3.5	0.4	0.3	0.2	22.1
33 Construction trades workers	4.6	6.1	2.9	0.9	1.5	0.4	0.1	0.3	16.9
34 Electrotechnology and telecommunications trades workers	3.3	2.7	2.9	0.9	2.0	0.2	0.2	0.2	12.4
35 Food trades workers	2.7	2.6	2.0	0.7	0.7	0.4	0.1	0.1	9.3
36 Skilled animal and horticultural workers	1.9	1.6	0.9	0.6	0.3	0.1	0.0	0.1	5.5
39 Other technicians and trades workers	6.7	5.2	5.0	1.4	2.2	0.5	0.1	0.2	21.3
391 Hairdressers	1.5	1.1	1.3	0.4	0.5	0.1	0.0	0.1	5.0
392 Printing trades workers	0.1	0.2	0.1	0.3	0.0	0.0	0.0	0.0	0.7
393 Textile, clothing and footwear trades workers	0.0	0.0	0.1	0.0	0.0	0.0	-	-	0.1
394 Wood trades workers	0.4	0.5	0.3	0.1	0.2	0.0	0.0	0.0	1.6
399 Miscellaneous	4.7	3.4	3.2	0.6	1.5	0.3	0.1	0.1	13.8
Community and personal service workers	15.7	16.8	10.0	2.2	5.1	1.5	0.6	1.4	53.2
41 Health and welfare support workers	2.8	1.8	0.6	0.2	0.5	0.4	0.1	0.2	6.7
42 Carers and aides	4.9	2.5	2.8	0.8	1.5	0.4	0.2	0.5	13.5
43 Hospitality workers	6.4	9.1	3.9	0.7	2.0	0.6	0.2	0.4	23.3
44 Protective service workers	0.1	0.1	0.2	0.1	0.3	0.0	0.0	0.2	1.0
45 Sports and personal service workers	1.4	3.3	2.5	0.4	0.8	0.1	0.1	0.1	8.7
Clerical and administrative workers	21.4	17.9	14.0	5.8	4.2	1.9	0.4	1.0	66.6
51 Office managers and program administrators	11.3	5.0	7.1	3.4	0.9	0.6	0.1	0.6	29.0
52 Personal assistants and secretaries	-	0.0	0.0	-	-	-	-	-	0.1
53 General clerical workers	3.1	2.2	3.4	0.9	1.4	0.4	0.2	0.2	11.7
54 Inquiry clerks and receptionists	3.7	7.6	1.6	0.7	0.7	0.6	0.0	0.1	15.0
55 Numerical clerks	2.0	1.1	1.2	0.4	0.4	0.2	0.1	0.0	5.5
56 Clerical and office support workers	-	-	-	-	-	-	-	-	-
59 Other clerical and administrative workers	1.3	1.9	0.7	0.4	0.8	0.1	0.0	0.0	5.3
Sales workers	14.5	19.4	9.1	4.7	2.6	1.4	0.2	0.6	52.4
61 Sales representatives and agents	3.1	0.5	1.5	0.2	0.2	0.1	0.0	0.1	5.7
62 Sales assistants and salespersons	11.4	18.8	7.6	4.5	2.3	1.3	0.2	0.5	46.7
63 Sales support workers	-	-	-	-	-	-	-	-	-
Machinery operators and drivers	8.6	5.4	5.0	2.3	3.2	0.4	0.1	0.1	25.1
71 Machine and stationary plant operators	1.3	0.5	0.9	0.3	0.6	0.1	0.0	0.0	3.7
72 Mobile plant operators	1.0	0.1	0.6	0.1	0.4	0.0	0.0	-	2.1
73 Road and rail drivers	2.1	1.4	1.6	1.1	1.0	0.1	0.0	0.1	7.4
74 Storepersons	4.3	3.4	2.0	0.8	1.2	0.1	0.0	0.1	12.0
Labourers	7.3	12.3	4.9	2.5	3.6	0.7	0.3	0.5	32.0
81 Cleaners and laundry workers	1.4	0.8	0.9	0.3	0.4	0.1	0.0	0.3	4.1
82 Construction and mining labourers	0.5	0.0	0.3	0.2	0.9	0.0	0.0	0.1	2.1
83 Factory process workers	4.2	10.1	2.6	1.7	1.3	0.2	0.0	0.0	20.1
84 Farm, forestry and garden workers	0.4	0.5	0.4	0.1	0.4	0.2	0.1	0.0	2.1
85 Food preparation assistants	0.2	0.3	0.2	0.0	0.1	0.0	0.0	0.0	0.9
89 Other labourers	0.6	0.6	0.6	0.2	0.5	0.1	0.1	0.1	2.7
Total⁷	104.2	109.0	75.8	27.9	33.6	9.0	2.8	5.9	368.2

A dash (-) represents a true zero figure, with no contracts reported in these categories.

For notes on figures and tables, see page 20.

Table 18 Commencements^{2,3} by industry skills councils, 12 months ending 30 June 2012, Australia ('000)

Industry skills councils	Trades ⁵	Non-trades ⁵	Total
AgriFood	9.3	12.9	22.2
Auto Skills Australia	11.9	3.4	15.3
Community Services and Health	2.9	26.6	29.5
Construction and Property Services	16.5	8.2	24.7
ElectroComms and Energy Utilities	11.1	0.1	11.3
ForestWorks	0.1	0.5	0.6
Government	0.0	2.7	2.7
Innovation and Business	5.9	94.7	100.5
Manufacturing	23.4	14.2	37.7
Service	11.0	79.0	90.0
SkillsDMC	4.6	4.1	8.7
Transport and Logistics	-	24.5	24.5
Training packages not assigned to industry skills councils	-	-	-
Training package qualifications total	96.9	270.9	367.8
Non-training package qualifications total	0.1	0.3	0.4
Total	97.0	271.2	368.2

A dash (-) represents a true zero figure, with no contracts reported in these categories.
For notes on figures and tables, see page 20.

Seasonally adjusted commencements

Table 19 Seasonally adjusted¹ commencements² in each quarter, by state/territory, 2007–12 ('000)

Quarter	NSW	Vic. ³	Qld	SA	WA	Tas.	NT	ACT	Australia
June 2007	20.3	18.0	15.8	5.3	5.7	2.0	0.6	1.2	68.9
September 2007	20.4	17.7	15.8	5.2	5.7	2.0	0.6	1.2	68.6
December 2007	21.3	17.8	16.0	5.3	5.9	2.1	0.7	1.3	70.4
March 2008	22.8	18.4	16.3	5.4	6.1	2.2	0.7	1.2	73.0
June 2008	23.5	18.9	15.9	5.5	6.3	2.1	0.7	1.2	73.8
September 2008	22.8	18.8	14.8	5.4	6.2	2.0	0.6	1.1	71.9
December 2008	21.4	18.2	13.6	5.2	6.0	1.9	0.6	1.2	68.1
March 2009	20.5	17.7	13.0	5.2	5.8	1.8	0.6	1.2	65.8
June 2009	20.8	17.7	13.4	5.0	5.6	1.7	0.7	1.3	66.2
September 2009	21.5	18.4	14.2	5.1	5.8	1.7	0.7	1.2	68.6
December 2009	22.5	19.3	14.9	5.4	6.1	1.8	0.7	1.2	72.0
March 2010	23.5	20.0	15.5	5.6	6.4	1.9	0.7	1.2	74.9
June 2010	24.5	20.9	15.9	5.8	6.7	2.1	0.7	1.2	77.7
September 2010	24.9	21.9	16.3	5.9	7.0	2.1	0.7	1.3	80.1
December 2010	24.5	23.1	16.5	5.9	7.0	2.0	0.7	1.3	81.2
March 2011	23.4	23.8	16.3	6.0	6.9	2.0	0.7	1.2	80.3
June 2011	22.6	24.0	16.0	6.0	6.7	2.0	0.7	1.2	79.2
September 2011	22.2	23.4	16.0	6.0	6.6	2.0	0.6	1.3	78.2
December 2011	23.9	24.5	17.4	6.4	7.4	2.1	0.6	1.4	83.9
March 2012	26.9	27.8	19.5	7.1	8.8	2.3	0.7	1.5	94.7
June 2012	29.4	30.9	21.1	7.6	9.9	2.4	0.8	1.6	104.0

For notes on figures and tables, see page 20.

Terms

AQF (Australian Qualifications Framework) is the national policy for regulated qualifications in Australian education and training. It incorporates the qualifications from each education and training sector into a single comprehensive national qualifications framework. For more details on the AQF, go to <<http://www.aqf.edu.au>>.

ANZSCO (Australian and New Zealand Standard Classification of Occupations) is a classification of the occupations of individuals. The classification is based on the Australian Bureau of Statistics publication, *Australian and New Zealand Standard Classification of Occupations* (First Edition, Revision 1, ABS cat.no.1220.0).

Cancellations and withdrawals refers to apprentices and trainees whose contract of training has been terminated prior to a successful completion. Cancellation and withdrawal figures in Victoria and Tasmania also include contracts which have been transferred due to a change in employer.

Commencements refers to apprentices and trainees starting a program of training. The date of commencement is the date that an apprentice or trainee contract of training is registered or approved under the provisions of the relevant state/territory legislation.

Completions refers to apprenticeship or traineeship contracts of training where all of the prescribed requirements have been met.

Contract status indicates the status of apprentice and trainee contracts of training, including the commencement, completion, and cancellation/withdrawal of contracts, and apprentices and trainees 'in-training'.

Existing workers refers to those apprentices and trainees who were employed by their current employer for more than three months full-time (or 12 months part-time/casual) prior to commencing their training contract.

Full-time apprentices or trainees are those whose ordinary hours of employment, including the training component, are at least the usual hours of employment for a full-time employee in that occupation.

Industry skills councils are organisations representing particular industries. For more information on industry skills councils, go to <<http://www.isc.org.au>>. For more information on training packages developed by industry skills councils, go to <<http://www.training.gov.au>>.

In-training refers to apprentices and trainees who are actively training, at the end of each quarter, under the terms of their training contract, and who have not completed, cancelled or withdrawn from their training, nor had their training contract expire without meeting all of the prescribed requirements of their program.

Non-trades refers to those apprentices and trainees employed in occupations outside the trades. 'Non-trades' includes all occupations listed under ANZSCO First Edition, Revision 1, with the exception of major group 3 (Technicians and trades workers).

Part-time apprentices or trainees are defined as those whose ordinary hours of employment, including the training component, are less than full-time. Part-time provisions vary across Australia and across occupations, with 'part-time' defined by each state and territory.

Seasonal adjustment refers to a mathematical model used in time series data to smooth out fluctuations attributable to seasonal influences.

Trades refers to those apprentices and trainees employed in trades occupations under major group 3 (Technicians and trades workers) of ANZSCO First Edition, Revision 1.

Training duration indicates the amount of time that an apprentice or trainee takes to complete their contract of training from the time of commencement.

Training packages are a set of nationally endorsed standards, guidelines and qualifications for training and for recognising and assessing skills. For more details on training packages, go to <<http://www.training.gov.au>>.

12-month ending series refers to the total number of commencements, completions and cancellations/withdrawals within a 12-month period (i.e. summing the current quarter with the previous three quarters).

Technical notes

Data source

Information included in this publication is, unless stated otherwise, derived from the National Apprentice and Trainee Collection no.73, September 2012 estimates, which is compiled under the Australian Vocational Education and Training Management Information Statistical Standard (AVETMISS) for Apprentice and Trainee Collection Specifications, Release 6.0, March 2008.

Estimation procedure

This publication contains figures on apprentice and trainee activity (such as commencements, completions and in-training) based on the date of effect rather than the date of processing. Due to lags in processing, the most recent figures in this publication are estimated (for training activity from December quarter 2010 to June quarter 2012). The estimation method involves weighting recently processed numbers, based on average reporting lags. Because estimates are revised for up to seven quarters, figures for the last two years may differ from those published in earlier or in subsequent reports. Further details on the methodology can be found at <<http://www.ncver.edu.au/publications/2267.html>>.

Seasonal adjustments

Seasonally adjusted data in this publication are derived from table 2 for in-training, table 4 for commencements, table 6 for completions and table 8 for cancellations and withdrawals. These data are adjusted using X-11-ARIMA methodology and then are 7-point Henderson-smoothed. The seasonally adjusted data used in figures 1–3 are available at <<http://www.ncver.edu.au/publications/2582.html>>.

Notes on figures and tables

Due to lags in processing numbers, recent quarter activity is estimated. Proportions (percentages) may be subject to error as they are based on a sample, not the total population. Figures in bold are actual numbers.

See <<http://www.ncver.edu.au/publications/2582.html>> for the standard errors on these estimates.

- 1 The data have been seasonally adjusted and smoothed. For further information, please refer to the technical notes on page 19.
- 2 Changes occurred to Commonwealth incentive payments for existing workers, chiefly the removal of the commencement incentive payment for those apprenticeships and traineeships not on the National Skills Needs List (NSNL). Under the changes, training needed to have commenced prior to 1 July 2012 to attract the old subsidy rate. Further details on incentive changes can be found in the 2012–2013 federal budget <http://www.budget.gov.au/2012-13/content/bp2/html/bp2_expense-15.htm>.
- 3 In April 2012, the Victorian Department of Education and Early Childhood Development announced through *Refocusing Vocational Training in Victoria* that it would refocus subsidy rates for VET courses to better target areas of greatest public benefit and future jobs growth. New fee and funding rates were effective from 1 July 2012 for all new course commencements. It is likely that changes in subsidy rates for some courses may have influenced employer decisions on whether to commence trainees in the first or second half of the year.
- 4 The cancellation and withdrawal figures are inclusive of the contract status 'transferred' for Victoria and Tasmania, as contract transfers due to a change in employer were historically reported as cancellations or withdrawals.
- 5 Non-trades are defined as all major occupations groups 1–2 and 4–8 (ANZSCO First Edition, Revision 1). Trades are defined as all major group 3 (Technicians and trades workers) (ANZSCO First Edition, Revision 1).
- 6 The data presented in figure 3 use ANZSCO. ANZSCO has now been back-cast by NCVER to 1994 for reporting purposes. For further information on the methodology, see <<http://www.ncver.edu.au/publications/2266.html>>.
- 7 Unknown data have not been reported, whereas the total includes all contracts, including those with unknown status. Hence, some figures may not sum to the total.



National Centre for Vocational Education Research Ltd
Level 11, 33 King William Street, Adelaide, South Australia
PO Box 8288, Station Arcade, SA 5000 Australia
Telephone +61 8 8230 8400 Facsimile +61 8 8212 3436
Website www.ncveredu.au Email ncver@ncveredu.au