

2010

SEPTEMBER
QUARTER

APPRENTICES & TRAINEES

Australian vocational
education & training
statistics



NCVER



Australian Government

Department of Education, Employment
and Workplace Relations



NCVER

Australian vocational education and training statistics

Apprentices and trainees

September quarter

2010

Highlights

There were 448 800 apprentices and trainees in-training as at 30 September 2010, an increase of 5.1% from the previous year.

In the 12 months to 30 September 2010, compared with the previous year:

- commencements increased by 14.2%, to 305 400
- completions increased by 4.5%, to 166 100
- cancellations and withdrawals increased by 2.9%, to 128 600.

For seasonally adjusted data, comparing the September quarter 2010 with the June quarter 2010:

- commencements in trades occupations increased by 1.0%
- commencements in non-trades occupations increased by 1.9%
- completions increased by 1.0%
- cancellations and withdrawals increased by 0.9%
- in-training numbers increased by 0.6%.



Australian Government

Department of Education, Employment
and Workplace Relations

© Commonwealth of Australia, 2011

This work has been produced by the National Centre for Vocational Education Research (NCVER) on behalf of the Australian Government and state and territory governments, with funding provided through the Australian Government Department of Education, Employment and Workplace Relations. Apart from any use permitted under the *Copyright Act 1968*, no part of this publication may be reproduced by any process without written permission. Requests should be made to NCVER.

The views and opinions expressed in this document are those of NCVER and do not necessarily reflect the views of the Australian Government or state and territory governments.

ISSN 1440-0359

TD/TNC 103.08

Cataloguing title:

Australian vocational education and training statistics: Apprentices and trainees 2010—September quarter

Comments and suggestions regarding this publication are welcomed and should be forwarded to NCVER.

Published by NCVER

ABN 87 007 967 311

Level 11, 33 King William Street, Adelaide SA 5000

PO Box 8288, Station Arcade, Adelaide SA 5000, Australia

Phone: (08) 8230 8400

Fax: (08) 8212 3436

Web: <<http://www.ncver.edu.au>>

Email: <ats_req@ncver.edu.au>

Contents

Apprentice and trainee directions	4
Introduction	4
Overall trends	4
Seasonally adjusted data	4
Tables	6
Terms	18
Technical notes	19
Notes on figures and tables	20

Tables

Quarterly training activity	6
1 In-training by state/territory and selected training characteristics, as at 30 September 2010 ('000)	6
2 In-training by state/territory as at the end of each quarter, 2005–10 ('000)	6
3 Commencements by state/territory and selected training characteristics, September quarter 2010 ('000)	7
4 Commencements in each quarter by state/territory, 2005–10 ('000)	7
5 Completions by state/territory and selected training characteristics, September quarter 2010 ('000)	8
6 Completions in each quarter by state/territory, 2005–10 ('000)	8
7 Cancellations and withdrawals by state/territory and selected training characteristics, September quarter 2010 ('000)	9
8 Cancellations and withdrawals in each quarter by state/territory, 2005–10 ('000)	9
9 In-training as at the end of each quarter by selected training characteristics, Australia, 2005–10 ('000)	10
10 Commencements in each quarter by selected training characteristics, Australia, 2005–10 ('000)	10
11 Completions in each quarter by selected training characteristics, Australia, 2005–10 ('000)	12
12 Cancellations and withdrawals in each quarter by selected training characteristics, Australia, 2005–10 ('000)	12
13 In-training in top 20 training packages by state/territory, as at 30 September 2010 ('000)	14
14 Commencements in top 20 training packages by state/territory, September quarter 2010 ('000)	14
Training activity: 12-month ending series	15
15 Commencements in 12 months ending 30 September, Australia, 2005–10 ('000)	15
16 Completions in 12 months ending 30 September, Australia, 2005–10 ('000)	15
17 Commencements by occupation and state/territory, 12 months ending 30 September 2010 ('000)	16
18 Commencements by industry skills councils, 12 months ending 30 September 2010, Australia ('000)	17
Seasonally adjusted commencements	17
19 Seasonally adjusted commencements in each quarter, by state/territory, 2005–10 ('000)	17

Figures

1 In-training, seasonally adjusted, 2000–10 ('000)	5
2 Commencements, completions and cancellations/withdrawals, seasonally adjusted, 2000–10 ('000)	5
3 Trades and non-trades commencements, seasonally adjusted, 2000–10 ('000)	5

Apprentice and trainee directions

Introduction

This publication presents estimates of apprentice and trainee activity in Australia for the September quarter 2010. The figures in this publication are derived from the National Apprentice and Trainee Collection no.66 (December 2010 estimates).

The most recent figures in this publication are estimated (those for training activity from the March quarter 2009 to the September quarter 2010). Estimates take into account reporting lags that occur at the time of data collection. Consequently, the figures in this publication may differ from those published in earlier or later reports.

Estimated data are presented in this publication on a seasonally adjusted, quarterly and 12-month ending series basis. The 12-month ending series is particularly useful in showing longer-term data trends, but is less useful in identifying turning points.

The seasonally adjusted data involve the use of a mathematical model to smooth out fluctuations due to seasonal influences. Seasonally adjusted data are useful to illustrate trends from one quarter to the next, but cannot be further disaggregated.

Further details on the estimation methodology and seasonally adjusted data tables can be found at <http://www.ncver.edu.au/publications/2346.html>.

Overall trends

In-training

The number of apprentices and trainees in-training as at 30 September 2010 was 448 800, an increase of 5.1% from one year earlier. In-training numbers increased in every state and territory with the exception of Tasmania.

For the 12 months ending 30 September 2010

Commencements

The number of commencements in the 12 months ending 30 September 2010 was 305 400, an increase of 14.2% from one year earlier.

Of this:

- trades commencements increased by 22.6%
- non-trades commencements increased by 10.9%.

State and territory commencements in the 12 months to 30 September 2010, compared with the previous year, showed:

- | | |
|----------------------------|--|
| ■ New South Wales (+14.7%) | ■ Western Australia (+13.0%) |
| ■ Victoria (+15.0%) | ■ Tasmania (+10.5%) |
| ■ Queensland (+16.4%) | ■ Northern Territory (+11.4%) |
| ■ South Australia (+10.1%) | ■ Australian Capital Territory (+0.0%) |

Completions

The number of completions in the 12 months ending 30 September 2010 was 166 100, an increase of 4.5% from one year earlier.

Cancellations and withdrawals

The number of cancellations and withdrawals in the 12 months ending 30 September 2010 was 128 600, an increase of 2.9% from one year earlier.

Seasonally adjusted data

In-training

The number of apprentices and trainees in-training increased over the last five quarters, up 4.2% between the September quarter 2009 and the September quarter 2010.

Commencements

Trades commencements have increased over the last six quarters, up 27.5% between the June quarter 2009 and the September quarter 2010.

Non-trades commencements have increased over the last six quarters, up 15.6% between the June quarter 2009 and the September quarter 2010.

Completions

Completions have increased over the last six quarters, up 6.8% between the June quarter 2009 and the September quarter 2010.

Cancellations and withdrawals

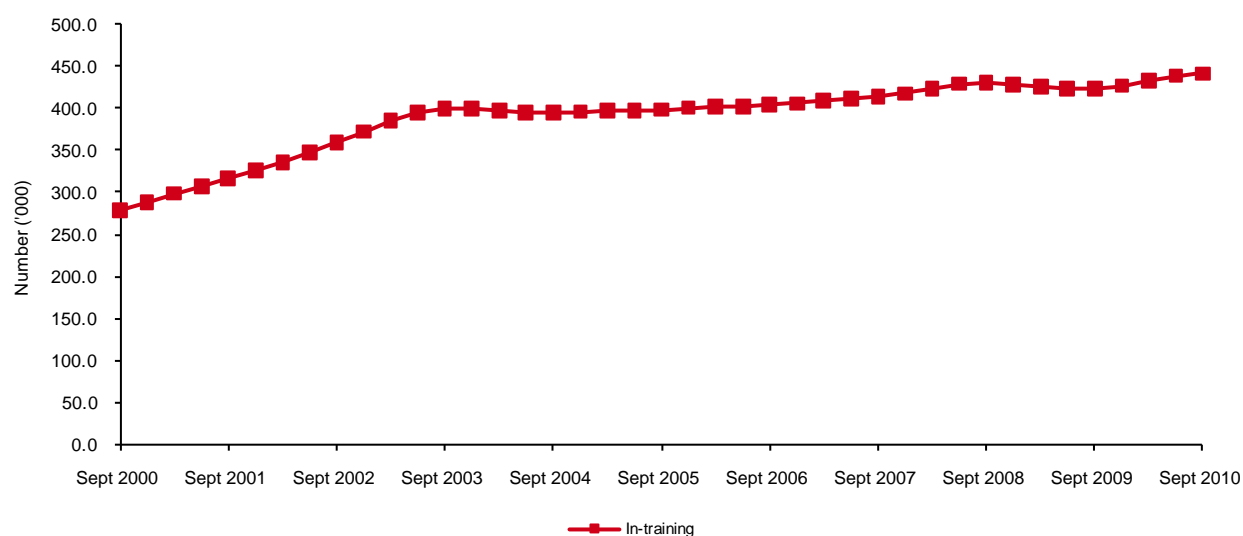
Cancellations and withdrawals have increased over the last five quarters, up 8.4% between the September quarter 2009 and the September quarter 2010.

For more information on seasonally adjusted data, see the technical notes on page 19.

Additional seasonally adjusted data tables are available at <http://www.ncver.edu.au/publications/2346.html>.

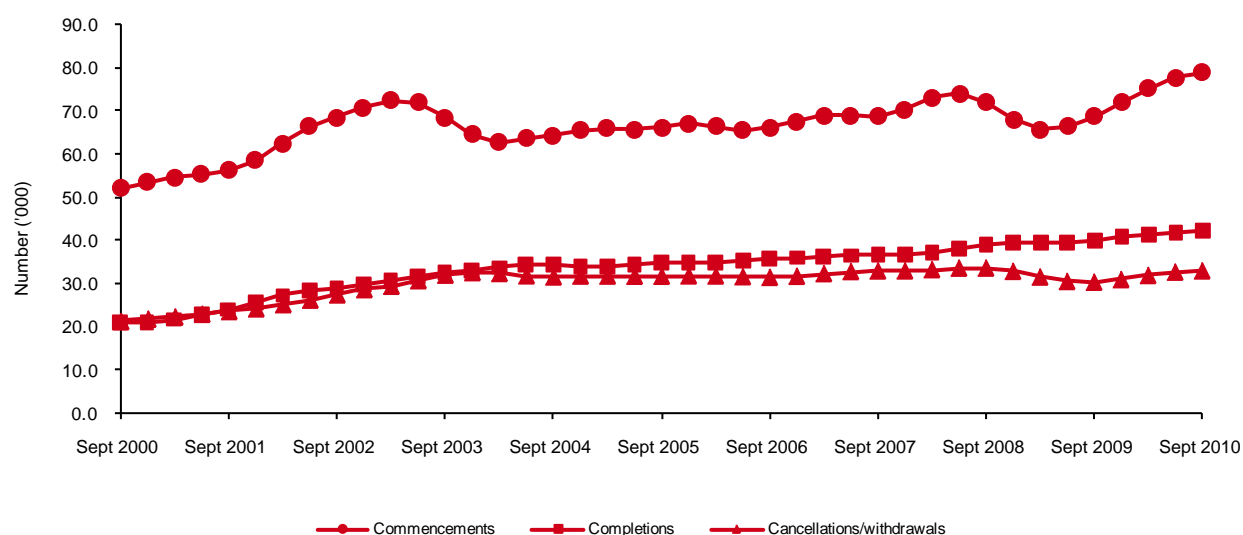
For more information on concepts and definitions used in this publication, see **Terms** listed on page 18.

Figure 1 In-training, seasonally adjusted¹, 2000–10 ('000)



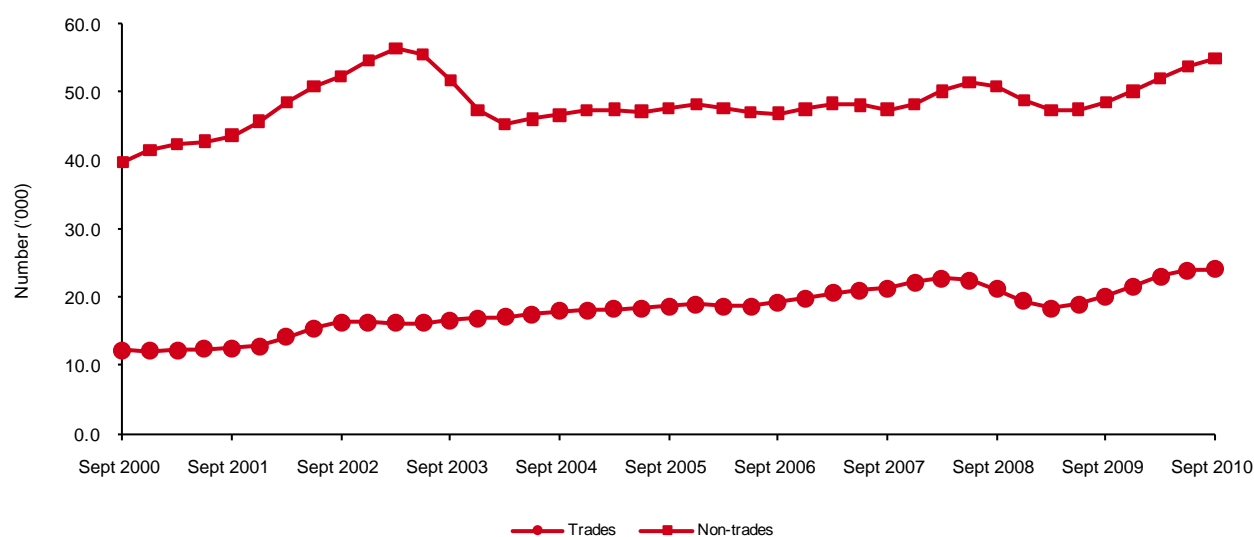
For notes on figures and tables, see page 20.

Figure 2 Commencements, completions and cancellations/withdrawals², seasonally adjusted¹, 2000–10 ('000)



For notes on figures and tables, see page 20.

Figure 3 Trades and non-trades^{3,4} commencements, seasonally adjusted¹, 2000–10 ('000)



For notes on figures and tables, see page 20.

Tables

Quarterly training activity

Table 1 In-training by state/territory and selected training characteristics, as at 30 September 2010 ('000)

		NSW	Vic	Qld	SA	WA	Tas	NT	ACT	Australia
Age	19 years and under	35.8	33.7	32.2	9.7	13.5	3.6	1.3	2.2	132.0
	20 to 24 years	38.6	33.5	21.7	8.6	9.3	3.0	1.1	2.5	118.2
	25 to 44 years	48.3	31.7	29.2	10.8	10.8	3.8	1.6	2.1	138.4
	45 years and over	23.8	13.9	11.4	4.3	4.0	1.5	0.5	0.7	60.1
Sex	Male	92.2	74.0	62.5	22.3	27.2	7.7	2.9	4.7	293.5
	Female	54.2	38.8	32.0	11.2	10.4	4.3	1.5	2.9	155.3
Occupation (ANZSCO) group	Managers and professionals	3.3	3.9	5.7	2.0	1.0	0.6	0.1	0.6	17.3
	Technicians and trades workers	59.9	54.1	46.8	14.3	21.6	5.6	2.2	3.3	208.0
	Community and personal service workers	19.2	14.3	7.4	2.0	4.0	1.3	0.6	1.5	50.3
	Clerical and administrative workers	28.4	14.1	14.4	6.0	2.9	1.7	0.5	0.9	68.8
	Sales workers	15.5	13.5	8.8	4.4	2.0	1.3	0.3	0.7	46.6
	Machinery operators and drivers	11.8	5.8	6.5	2.9	3.3	0.7	0.3	0.3	31.5
	Labourers	8.4	7.1	4.8	1.7	2.8	0.8	0.3	0.4	26.3
AQF qualification level	Certificate I or II	9.9	7.1	7.1	3.4	3.2	1.2	0.5	0.6	33.0
	Certificate III	101.8	86.4	67.0	23.1	28.6	8.5	3.4	5.3	324.1
	Certificate IV	33.0	15.8	16.1	5.7	4.5	1.5	0.4	1.2	78.1
	Diploma/advanced diploma	1.7	3.6	4.4	1.2	1.3	0.7	0.1	0.5	13.6
Full-time status	Full-time	114.2	81.5	68.7	25.0	33.4	9.2	3.6	5.5	341.2
	Part-time	32.2	31.4	25.8	8.4	4.2	2.8	0.8	2.1	107.5
Total⁵		146.5	112.8	94.5	33.4	37.6	11.9	4.4	7.6	448.8

For notes on figures and tables, see page 20.

Table 2 In-training by state/territory as at the end of each quarter, 2005–10 ('000)

Quarter	NSW	Vic	Qld	SA	WA	Tas	NT	ACT	Australia
30 September 2005	120.6	116.2	78.0	33.7	30.1	12.8	3.2	6.4	401.0
31 December 2005	120.1	111.8	74.9	33.1	29.5	12.4	3.0	5.9	390.8
31 March 2006	125.4	113.6	81.0	33.9	31.5	12.9	3.2	6.6	408.1
30 June 2006	123.0	110.9	82.3	33.5	32.1	12.6	3.2	6.7	404.4
30 September 2006	124.3	110.1	84.2	33.1	32.2	12.5	3.2	6.6	406.2
31 December 2006	124.0	105.1	81.0	32.7	31.7	12.3	3.0	6.2	396.0
31 March 2007	129.3	107.6	87.8	32.4	33.9	12.8	3.3	6.9	413.9
30 June 2007	128.6	107.4	89.7	31.5	34.3	12.8	3.3	6.7	414.3
30 September 2007	130.7	106.8	91.4	31.7	34.7	13.0	3.3	6.7	418.5
31 December 2007	130.5	100.8	87.3	30.2	34.0	12.7	3.2	6.2	404.8
31 March 2008	136.9	105.6	93.3	31.5	36.2	13.3	3.6	6.9	427.2
30 June 2008	139.5	107.1	95.3	32.1	36.7	13.4	3.7	6.9	434.6
30 September 2008	140.9	107.3	94.4	32.2	36.9	13.1	3.8	6.7	435.3
31 December 2008	137.6	102.5	87.8	31.3	35.8	12.2	3.5	5.9	416.6
31 March 2009	141.0	105.1	90.8	31.7	37.3	12.4	3.8	6.8	428.8
30 June 2009	139.6	105.4	89.8	32.1	36.7	12.1	3.9	6.8	426.5
30 September 2009	139.6	106.0	90.2	31.9	36.4	12.0	4.0	7.1	427.1
31 December 2009	138.6	102.4	86.1	30.7	35.3	11.2	3.8	6.6	414.8
31 March 2010	144.9	107.3	91.7	32.3	37.2	11.9	4.2	7.3	436.9
30 June 2010	145.1	109.4	93.0	32.4	37.6	11.9	4.3	7.4	441.3
30 September 2010	146.5	112.8	94.5	33.4	37.6	11.9	4.4	7.6	448.8

For notes on figures and tables, see page 20.

Table 3 Commencements by state/territory and selected training characteristics, September quarter 2010 ('000)

		NSW	Vic	Qld	SA	WA	Tas	NT	ACT	Australia
Age	19 years and under	5.5	7.6	5.3	1.6	2.1	0.6	0.2	0.4	23.4
	20 to 24 years	4.5	4.2	2.6	0.9	1.2	0.4	0.1	0.3	14.2
	25 to 44 years	8.9	6.7	5.7	1.9	2.2	0.8	0.3	0.4	26.9
	45 years and over	4.5	3.4	2.4	0.8	0.8	0.3	0.1	0.1	12.5
Sex	Male	12.4	11.9	8.7	3.1	3.9	1.1	0.3	0.6	42.1
	Female	11.0	10.1	7.3	2.2	2.4	1.0	0.3	0.5	34.9
Occupation (ANZSCO) group	Managers and professionals	0.6	1.6	1.9	0.5	0.2	0.2	0.0	0.2	5.1
	Technicians and trades workers	4.8	5.4	4.4	1.5	2.2	0.5	0.2	0.3	19.2
	Community and personal service workers	4.1	3.5	1.7	0.4	1.2	0.4	0.2	0.3	11.8
	Clerical and administrative workers	6.3	3.7	3.2	1.3	0.8	0.4	0.1	0.2	15.9
	Sales workers	3.4	4.5	2.4	0.8	0.7	0.4	0.1	0.1	12.4
	Machinery operators and drivers	2.3	1.2	1.0	0.5	0.7	0.1	0.0	0.1	5.9
	Labourers	1.9	2.1	1.5	0.3	0.7	0.2	0.0	0.1	6.8
AQF qualification level	Certificate I or II	2.1	2.2	1.9	0.5	0.9	0.3	0.1	0.1	8.1
	Certificate III	14.7	14.7	8.7	3.2	4.0	1.1	0.5	0.7	47.7
	Certificate IV	6.2	3.4	3.7	1.0	1.2	0.4	0.1	0.3	16.3
	Diploma/advanced diploma	0.4	1.6	1.7	0.5	0.3	0.3	0.0	0.1	4.9
Full-time status	Full-time	16.9	13.4	11.1	3.8	5.3	1.4	0.5	0.8	53.2
	Part-time	6.5	8.6	4.9	1.5	1.1	0.7	0.2	0.4	23.8
Existing worker	Existing worker	8.2	7.3	6.7	2.4	1.8	0.9	0.2	0.4	28.0
	Newly commencing worker	15.2	14.6	9.2	2.9	4.6	1.2	0.4	0.8	48.9
Total⁵		23.5	22.0	16.0	5.3	6.3	2.1	0.7	1.2	77.0

For notes on figures and tables, see page 20.

Table 4 Commencements in each quarter by state/territory, 2005–10 ('000)

Quarter	NSW	Vic	Qld	SA	WA	Tas	NT	ACT	Australia
30 September 2005	16.4	20.4	12.4	5.4	4.9	1.8	0.5	1.3	63.1
31 December 2005	16.3	18.0	10.6	4.3	4.4	1.5	0.4	0.9	56.6
31 March 2006	25.9	22.8	18.4	6.6	6.9	2.4	0.8	1.8	85.7
30 June 2006	15.6	18.2	13.5	4.4	5.2	1.7	0.5	1.3	60.4
30 September 2006	17.4	17.9	13.5	4.7	4.9	1.8	0.6	1.2	61.9
31 December 2006	17.6	16.0	12.1	4.6	4.9	1.8	0.4	1.1	58.5
31 March 2007	27.1	21.7	19.7	6.5	7.4	2.4	0.8	1.7	87.4
30 June 2007	17.1	17.6	15.6	4.8	5.2	1.9	0.5	1.0	63.7
30 September 2007	19.6	17.7	15.1	5.3	5.4	1.9	0.6	1.2	66.8
31 December 2007	18.3	14.7	12.5	4.1	5.1	1.8	0.5	0.9	57.9
31 March 2008	28.8	22.4	19.8	7.0	7.8	2.7	0.9	1.8	91.1
30 June 2008	22.3	18.6	17.2	5.4	6.0	2.1	0.7	1.1	73.3
30 September 2008	20.8	18.1	13.5	5.0	5.7	1.8	0.6	1.0	66.6
31 December 2008	18.1	16.0	10.6	4.6	5.4	1.7	0.4	0.8	57.7
31 March 2009	27.1	20.6	16.9	6.0	7.0	2.2	0.8	1.8	82.3
30 June 2009	18.4	17.2	12.9	5.2	5.3	1.7	0.6	1.1	62.5
30 September 2009	19.6	17.9	13.6	4.8	5.3	1.7	0.7	1.2	64.9
31 December 2009	20.2	16.8	12.4	4.2	5.4	1.4	0.6	0.9	61.8
31 March 2010	30.1	23.8	19.1	7.7	8.1	2.6	0.9	1.8	94.1
30 June 2010	21.7	19.9	15.5	5.5	6.3	1.9	0.6	1.1	72.6
30 September 2010	23.5	22.0	16.0	5.3	6.3	2.1	0.7	1.2	77.0

For notes on figures and tables, see page 20.

Table 5 Completions by state/territory and selected training characteristics, September quarter 2010 ('000)

		NSW	Vic	Qld	SA	WA	Tas	NT	ACT	Australia
Age	19 years and under	1.3	2.8	1.9	0.5	0.9	0.2	0.0	0.1	7.7
	20 to 24 years	3.3	2.9	2.5	0.7	1.6	0.4	0.1	0.1	11.5
	25 to 44 years	4.5	3.1	3.0	0.8	1.2	0.5	0.1	0.2	13.4
	45 years and over	2.8	1.7	1.4	0.4	0.4	0.2	0.0	0.1	7.0
Sex	Male	6.3	5.2	5.0	1.3	2.6	0.7	0.2	0.3	21.6
	Female	5.5	5.3	3.8	1.1	1.4	0.6	0.1	0.2	18.0
Occupation (ANZSCO) group	Managers and professionals	0.6	0.2	0.3	0.1	0.1	0.0	0.0	0.1	1.4
	Technicians and trades workers	2.9	2.4	3.1	0.6	2.0	0.4	0.1	0.1	11.6
	Community and personal service workers	1.8	1.7	1.2	0.2	0.5	0.2	0.0	0.1	5.7
	Clerical and administrative workers	2.7	2.0	1.5	0.6	0.4	0.2	0.0	0.1	7.6
	Sales workers	1.6	2.8	1.2	0.6	0.3	0.2	0.0	0.0	6.8
	Machinery operators and drivers	1.3	0.9	0.8	0.2	0.4	0.1	0.0	0.0	3.8
	Labourers	0.9	0.6	0.6	0.2	0.3	0.1	0.0	0.0	2.8
AQF qualification level	Certificate I or II	1.2	1.6	1.0	0.4	0.5	0.2	0.0	0.0	5.1
	Certificate III	8.0	7.1	6.1	1.6	3.0	0.9	0.2	0.3	27.0
	Certificate IV	2.6	1.7	1.5	0.4	0.4	0.2	0.0	0.0	6.8
	Diploma/advanced diploma	0.1	0.1	0.2	0.0	0.1	0.0	0.0	0.1	0.7
Actual duration of training	Two years or less	9.2	8.5	6.3	1.8	2.3	0.9	0.2	0.4	29.5
	More than two years	2.7	2.0	2.5	0.6	1.7	0.4	0.1	0.1	10.1
Full-time status	Full-time	9.2	5.9	6.3	2.0	3.5	0.9	0.2	0.3	28.3
	Part-time	2.7	4.6	2.5	0.4	0.5	0.4	0.0	0.1	11.3
Total⁵		11.8	10.5	8.8	2.4	4.0	1.3	0.3	0.4	39.6

For notes on figures and tables, see page 20.

Table 6 Completions in each quarter by state/territory, 2005–10 ('000)

Quarter	NSW	Vic	Qld	SA	WA	Tas	NT	ACT	Australia
30 September 2005	8.2	10.0	6.4	2.6	2.2	1.3	0.2	0.6	31.5
31 December 2005	8.4	12.2	8.4	2.2	3.0	1.2	0.3	0.8	36.6
31 March 2006	12.0	10.5	7.0	3.1	3.0	1.1	0.4	0.6	37.6
30 June 2006	9.4	10.7	6.6	2.3	2.6	1.2	0.2	0.5	33.6
30 September 2006	8.5	10.0	6.4	2.4	2.6	1.2	0.3	0.6	32.0
31 December 2006	9.6	12.1	9.4	2.5	3.0	1.2	0.3	0.8	38.9
31 March 2007	13.0	10.4	7.0	4.2	2.8	1.1	0.3	0.6	39.2
30 June 2007	9.4	9.6	7.7	3.1	2.3	1.1	0.2	0.5	33.8
30 September 2007	9.4	9.9	7.0	2.6	2.7	1.1	0.3	0.6	33.5
31 December 2007	9.6	12.1	9.9	3.2	3.2	1.4	0.3	0.8	40.5
31 March 2008	13.4	9.7	7.4	3.2	3.1	1.3	0.2	0.5	38.8
30 June 2008	10.7	9.3	8.6	2.5	2.7	1.3	0.2	0.5	35.9
30 September 2008	10.5	9.5	7.9	2.5	3.0	1.3	0.2	0.6	35.5
31 December 2008	11.9	12.1	10.4	3.2	3.8	1.7	0.4	0.9	44.5
31 March 2009	14.3	10.0	7.9	3.0	3.3	1.3	0.2	0.5	40.5
30 June 2009	10.8	9.5	8.3	2.6	3.5	1.2	0.2	0.6	36.7
30 September 2009	11.1	10.1	7.9	2.6	3.6	1.2	0.3	0.5	37.3
31 December 2009	12.2	12.6	10.3	3.0	4.2	1.4	0.4	0.8	44.9
31 March 2010	14.7	10.9	7.8	3.4	4.2	1.2	0.3	0.5	42.9
30 June 2010	11.7	10.0	8.2	3.1	3.7	1.1	0.3	0.5	38.6
30 September 2010	11.8	10.5	8.8	2.4	4.0	1.3	0.3	0.4	39.6

For notes on figures and tables, see page 20.

Table 7 Cancellations and withdrawals² by state/territory and selected training characteristics, September quarter 2010 ('000)

		NSW	Vic	Qld	SA	WA	Tas	NT	ACT	Australia
Age	19 years and under	3.7	3.2	2.7	0.6	1.1	0.3	0.1	0.3	11.9
	20 to 24 years	3.0	2.6	1.6	0.4	0.6	0.3	0.1	0.2	8.7
	25 to 44 years	3.5	2.3	1.8	0.5	0.7	0.3	0.1	0.1	9.3
	45 years and over	1.2	0.8	0.6	0.1	0.2	0.1	0.0	0.1	3.1
Sex	Male	7.1	5.5	4.0	0.9	1.6	0.6	0.2	0.4	20.3
	Female	4.3	3.5	2.6	0.6	1.0	0.4	0.2	0.3	12.8
Occupation (ANZSCO) group	Managers and professionals	0.2	0.2	0.3	0.1	0.1	0.0	0.0	0.0	0.9
	Technicians and trades workers	4.4	3.9	3.2	0.5	1.3	0.4	0.2	0.3	14.1
	Community and personal service workers	1.5	1.2	0.6	0.1	0.3	0.1	0.1	0.1	4.1
	Clerical and administrative workers	2.0	1.3	0.9	0.3	0.3	0.1	0.0	0.1	5.0
	Sales workers	1.4	1.2	0.7	0.3	0.2	0.1	0.1	0.1	4.2
	Machinery operators and drivers	0.8	0.4	0.3	0.1	0.2	0.0	0.0	0.0	1.9
	Labourers	1.0	0.6	0.7	0.2	0.3	0.1	0.0	0.1	2.9
AQF qualification level	Certificate I or II	1.2	0.8	0.8	0.3	0.5	0.1	0.1	0.1	3.9
	Certificate III	8.1	6.9	4.7	1.0	1.8	0.7	0.3	0.5	23.9
	Certificate IV	1.9	1.0	0.8	0.1	0.3	0.1	0.0	0.1	4.5
	Diploma/advanced diploma	0.1	0.2	0.2	0.0	0.1	0.0	0.0	0.0	0.7
Duration until cancelled/withdrawn	Two years or less	10.5	8.3	6.0	1.4	2.5	0.9	0.3	0.6	30.4
	More than two years	0.9	0.7	0.7	0.1	0.2	0.1	0.1	0.0	2.6
Full-time status	Full-time	8.7	6.1	4.8	1.0	2.2	0.7	0.3	0.5	24.4
	Part-time	2.6	2.8	1.8	0.5	0.4	0.3	0.1	0.2	8.7
Total⁵		11.3	8.9	6.6	1.5	2.6	0.9	0.4	0.7	33.1

For notes on figures and tables, see page 20.

Table 8 Cancellations and withdrawals² in each quarter by state/territory, 2005–10 ('000)

Quarter	NSW	Vic	Qld	SA	WA	Tas	NT	ACT	Australia
30 September 2005	9.6	10.3	5.6	2.0	1.9	0.7	0.4	0.7	31.2
31 December 2005	9.2	10.1	6.0	2.2	2.0	0.8	0.4	0.7	31.4
31 March 2006	10.1	10.7	6.2	2.1	2.1	0.8	0.4	0.8	33.2
30 June 2006	9.3	10.0	6.1	1.9	1.9	0.8	0.4	0.7	31.0
30 September 2006	9.3	9.1	6.2	2.1	2.2	0.8	0.4	0.8	30.9
31 December 2006	9.3	9.0	6.9	2.0	2.4	0.8	0.4	0.8	31.5
31 March 2007	10.6	9.5	7.2	2.0	2.5	0.8	0.4	0.8	33.7
30 June 2007	9.8	8.6	7.1	1.9	2.4	0.9	0.4	0.8	31.8
30 September 2007	9.7	8.9	7.6	1.9	2.5	0.8	0.4	0.8	32.6
31 December 2007	10.1	8.8	8.0	2.0	2.6	0.9	0.4	0.8	33.5
31 March 2008	10.3	8.7	7.7	2.0	2.6	0.9	0.4	0.7	33.3
30 June 2008	10.3	8.1	7.8	1.8	2.9	0.9	0.4	0.7	32.8
30 September 2008	10.4	9.2	7.6	1.8	2.7	1.0	0.4	0.7	33.8
31 December 2008	10.1	9.2	7.6	1.8	2.7	0.9	0.4	0.7	33.4
31 March 2009	10.3	8.4	7.0	1.8	2.2	0.9	0.4	0.6	31.7
30 June 2009	9.9	7.7	6.3	1.7	2.5	0.8	0.4	0.6	29.8
30 September 2009	10.0	7.8	6.6	1.8	2.4	0.8	0.3	0.5	30.2
31 December 2009	9.7	8.3	7.1	2.0	2.5	0.8	0.4	0.6	31.2
31 March 2010	10.4	8.6	7.0	2.1	2.6	0.8	0.3	0.7	32.4
30 June 2010	10.4	8.5	6.6	1.9	2.5	0.9	0.3	0.6	31.9
30 September 2010	11.3	8.9	6.6	1.5	2.6	0.9	0.4	0.7	33.1

For notes on figures and tables, see page 20.

Table 9 In-training as at the end of each quarter by selected training characteristics, Australia, 2005–10 ('000)

		30 Sept 2005	31 Dec 2005	31 Mar 2006	30 June 2006	30 Sept 2006	31 Dec 2006	31 Mar 2007	30 June 2007
Age	19 years and under	129.9	124.0	139.0	135.7	132.4	127.2	142.5	141.0
	20 to 24 years	108.9	108.4	107.9	108.6	112.0	111.1	110.7	112.4
	25 to 44 years	114.5	111.7	113.4	112.5	113.8	111.1	113.3	113.4
	45 years and over	47.8	46.7	47.8	47.6	48.0	46.5	47.3	47.5
Sex	Male	265.4	259.7	272.7	270.5	271.8	266.1	279.3	278.7
	Female	135.5	131.1	135.3	133.9	134.3	129.8	134.6	135.5
Occupation (ANZSCO) group	Managers and professionals	5.3	5.4	6.2	6.8	7.9	8.4	9.2	10.2
	Technicians and trades workers	172.9	172.3	184.4	183.0	184.6	183.4	196.1	195.4
	Community and personal service workers	45.5	43.5	44.8	44.1	44.1	42.1	44.7	45.3
	Clerical and administrative workers	55.9	53.3	54.5	54.0	54.3	52.6	54.1	54.5
	Sales workers	46.1	44.4	45.7	45.1	44.9	43.9	44.1	44.1
	Machinery operators and drivers	43.9	42.4	42.1	41.0	40.9	38.8	38.2	37.7
	Labourers	31.5	29.4	30.5	30.4	29.4	26.8	27.5	27.1
AQF qualification level	Certificate I or II	48.9	44.4	46.0	45.2	43.7	40.7	41.7	41.7
	Certificate III	309.0	304.4	317.7	314.6	316.1	309.3	324.0	323.5
	Certificate IV	41.6	40.7	42.8	43.0	44.6	44.4	46.3	46.8
	Diploma/advanced diploma	1.4	1.4	1.6	1.5	1.7	1.6	1.9	2.3
Full-time status	Full-time	316.7	311.1	325.7	323.2	324.5	318.6	332.2	330.5
	Part-time	84.4	79.7	82.4	81.3	81.7	77.4	81.7	83.8
Total⁵		401.0	390.8	408.1	404.4	406.2	396.0	413.9	414.3

For notes on figures and tables, see page 20.

Table 10 Commencements in each quarter by selected training characteristics, Australia, 2005–10 ('000)

		30 Sept 2005	31 Dec 2005	31 Mar 2006	30 June 2006	30 Sept 2006	31 Dec 2006	31 Mar 2007	30 June 2007
Age	19 years and under	21.8	22.3	42.4	22.0	21.7	23.5	43.4	24.0
	20 to 24 years	11.9	9.7	13.7	10.8	11.6	10.1	14.1	11.5
	25 to 44 years	20.8	17.2	21.0	19.3	20.3	17.5	21.4	19.8
	45 years and over	8.5	7.4	8.5	8.3	8.3	7.4	8.4	8.4
Sex	Male	37.0	32.2	53.2	34.3	35.4	33.6	54.4	35.7
	Female	26.1	24.4	32.5	26.2	26.4	24.8	32.9	28.0
Occupation (ANZSCO) group	Managers and professionals	0.9	1.1	1.8	1.6	2.1	1.9	2.1	2.4
	Technicians and trades workers	15.7	14.9	31.3	13.7	15.3	16.4	33.7	15.5
	Community and personal service workers	9.5	9.0	11.6	9.0	9.3	8.9	12.1	10.0
	Clerical and administrative workers	11.5	9.7	14.0	11.8	12.1	10.7	14.1	12.5
	Sales workers	9.8	9.3	11.7	9.7	9.6	9.2	10.5	9.6
	Machinery operators and drivers	8.8	6.6	7.0	7.6	7.7	5.8	6.9	7.4
	Labourers	6.8	6.0	8.3	7.1	5.9	5.6	8.0	6.4
AQF qualification level	Certificate I or II	10.5	9.9	14.2	10.7	9.6	10.0	13.1	10.4
	Certificate III	45.0	40.4	61.8	42.2	43.1	40.3	64.1	44.3
	Certificate IV	7.3	6.1	9.3	7.4	8.9	7.9	9.7	8.4
	Diploma/advanced diploma	0.3	0.2	0.4	0.2	0.3	0.2	0.5	0.7
Full-time status	Full-time	46.5	40.8	65.7	44.2	45.1	42.2	66.9	45.7
	Part-time	16.5	15.9	19.9	16.2	16.8	16.3	20.5	18.0
Existing worker	Existing worker	18.3	15.0	18.0	17.5	18.3	15.3	18.5	17.9
	Newly commencing worker	44.7	41.6	67.6	42.9	43.6	43.1	68.8	45.8
Total⁵		63.1	56.6	85.7	60.4	61.9	58.5	87.4	63.7

For notes on figures and tables, see page 20.

Table 9 (continued)

30 Sept 2007	31 Dec 2007	31 Mar 2008	30 June 2008	30 Sept 2008	31 Dec 2008	31 Mar 2009	30 June 2009	30 Sept 2009	31 Dec 2009	31 Mar 2010	30 June 2010	30 Sept 2010
138.5	131.8	150.0	148.8	144.5	134.4	144.2	138.4	132.2	124.9	139.9	136.3	132.0
115.9	113.7	112.9	114.7	116.6	112.9	110.7	111.0	113.8	111.5	111.6	114.4	118.2
115.9	112.8	116.7	120.7	122.9	119.3	122.2	124.0	126.3	124.0	129.4	133.3	138.4
48.2	46.6	47.5	50.4	51.3	50.0	51.7	53.1	54.8	54.4	56.0	57.3	60.1
281.3	273.4	289.2	291.3	291.4	279.3	285.7	282.5	281.2	274.6	289.1	290.6	293.5
137.1	131.4	137.9	143.3	143.9	137.3	143.0	143.9	145.9	140.3	147.9	150.7	155.3
11.9	12.2	13.6	14.4	15.5	14.4	14.7	14.0	13.5	12.2	13.3	14.9	17.3
197.3	194.6	209.0	209.5	207.9	201.3	207.6	203.7	202.5	198.7	210.6	209.3	208.0
46.0	43.5	45.2	46.5	46.5	44.5	47.4	48.4	48.7	46.2	48.5	48.4	50.3
54.9	52.2	54.7	58.5	58.6	55.4	58.3	60.1	62.0	60.7	64.4	66.2	68.8
44.7	42.5	44.6	45.4	45.8	43.9	44.5	44.1	44.2	42.4	44.2	45.6	46.6
37.2	35.3	35.0	35.2	36.1	33.7	32.7	31.9	31.5	31.8	31.9	31.7	31.5
26.4	24.5	25.1	25.1	24.9	23.4	23.7	24.3	24.7	22.8	24.0	25.1	26.3
40.9	37.3	39.4	40.4	39.7	36.3	37.4	37.1	35.6	32.0	33.6	33.8	33.0
326.2	317.4	334.1	335.7	335.4	320.7	326.1	319.9	317.0	308.6	323.2	322.8	324.1
48.6	47.1	49.9	54.2	55.5	54.9	60.1	64.1	68.4	68.1	72.1	74.4	78.1
2.7	3.0	3.8	4.3	4.6	4.6	5.1	5.5	6.1	6.2	8.1	10.2	13.6
333.6	324.7	340.9	344.1	342.6	328.1	334.6	329.1	327.8	320.0	335.4	337.2	341.2
84.9	80.1	86.2	90.6	92.6	88.5	94.2	97.4	99.3	94.9	101.5	104.1	107.5
418.5	404.8	427.2	434.6	435.3	416.6	428.8	426.5	427.1	414.8	436.9	441.3	448.8

Table 10 (continued)

30 Sept 2007	31 Dec 2007	31 Mar 2008	30 June 2008	30 Sept 2008	31 Dec 2008	31 Mar 2009	30 June 2009	30 Sept 2009	31 Dec 2009	31 Mar 2010	30 June 2010	30 Sept 2010
23.3	23.8	46.4	25.9	22.9	22.1	37.7	20.2	19.9	23.3	43.5	23.1	23.4
12.8	9.9	14.5	12.3	12.3	9.5	13.0	10.6	11.8	10.2	15.0	13.2	14.2
22.0	17.2	22.2	23.6	22.2	18.2	22.2	21.7	22.7	19.0	25.4	25.1	26.9
8.8	7.1	7.9	11.5	9.2	8.0	9.4	10.1	10.5	9.3	10.3	11.2	12.5
38.6	33.3	56.6	39.8	37.7	32.3	48.7	34.0	34.8	35.2	57.5	40.0	42.1
28.2	24.6	34.5	33.6	28.9	25.4	33.6	28.6	30.0	26.6	36.6	32.6	34.9
3.0	2.2	2.9	2.8	3.0	1.9	2.4	1.9	1.8	1.5	3.5	3.7	5.1
17.8	17.1	36.5	18.5	16.3	15.3	30.0	14.8	15.7	17.7	36.9	19.0	19.2
10.1	8.9	11.8	11.6	10.3	9.4	12.8	10.6	10.4	9.4	12.7	9.8	11.8
12.4	10.1	15.0	16.0	12.6	10.7	15.0	14.0	14.6	12.6	16.4	15.4	15.9
10.3	8.4	12.2	10.9	10.8	9.5	10.5	9.7	10.6	9.4	12.3	12.3	12.4
7.2	5.9	5.9	7.1	7.6	5.3	5.4	5.6	5.7	5.9	5.7	6.0	5.9
5.9	5.3	6.8	6.5	5.9	5.7	6.3	6.0	6.1	5.2	6.6	6.4	6.8
9.6	9.1	12.6	11.0	9.5	9.3	10.8	8.8	8.3	8.1	10.9	8.8	8.1
46.7	41.1	66.4	48.5	45.9	38.6	56.3	39.6	40.4	40.7	65.4	45.7	47.7
9.8	7.2	11.0	12.9	10.3	9.1	14.2	13.1	14.9	12.1	15.0	14.9	16.3
0.7	0.6	1.2	0.9	0.9	0.7	1.1	1.0	1.3	0.9	2.8	3.2	4.9
49.4	41.7	68.9	51.9	46.9	39.2	59.8	42.0	44.3	42.3	68.6	50.9	53.2
17.4	16.3	22.1	21.5	19.7	18.5	22.5	20.5	20.5	19.4	25.5	21.6	23.8
19.6	14.9	18.7	23.2	19.6	16.5	21.8	22.4	24.0	20.1	24.3	26.9	28.0
47.2	43.0	72.3	50.2	47.0	41.2	60.5	40.1	40.9	41.6	69.7	45.7	48.9
66.8	57.9	91.1	73.3	66.6	57.7	82.3	62.5	64.9	61.8	94.1	72.6	77.0

Table 11 Completions in each quarter by selected training characteristics, Australia, 2005–10 ('000)

		30 Sept 2005	31 Dec 2005	31 Mar 2006	30 June 2006	30 Sept 2006	31 Dec 2006	31 Mar 2007	30 June 2007
Age	19 years and under	4.9	8.1	7.6	5.5	5.2	8.4	7.4	5.4
	20 to 24 years	8.8	10.2	13.9	10.1	9.4	11.1	14.5	10.2
	25 to 44 years	11.6	12.0	10.9	11.8	11.3	12.5	11.6	12.1
	45 years and over	6.2	6.4	5.1	6.3	6.1	6.9	5.7	6.2
Sex	Male	17.4	20.0	22.3	18.5	17.7	21.6	23.4	19.0
	Female	14.1	16.7	15.3	15.1	14.3	17.3	15.7	14.9
Occupation (ANZSCO) group	Managers and professionals	0.4	0.6	0.6	0.5	0.4	0.8	0.7	0.8
	Technicians and trades workers	5.9	7.8	11.8	7.1	6.8	9.4	12.9	7.9
	Community and personal service workers	4.9	6.6	5.5	5.6	5.3	6.6	5.4	5.3
	Clerical and administrative workers	6.6	7.4	7.6	6.9	6.7	7.5	7.4	6.7
	Sales workers	4.7	5.3	4.6	4.8	4.4	4.8	4.5	4.6
	Machinery operators and drivers	5.2	4.8	4.1	5.2	4.8	5.1	4.5	5.0
	Labourers	3.8	4.2	3.5	3.5	3.5	4.7	3.8	3.6
AQF qualification level	Certificate I or II	5.6	7.5	5.9	5.2	4.9	6.8	5.8	4.8
	Certificate III	22.6	24.9	27.7	24.5	23.0	27.2	29.0	24.7
	Certificate IV	3.2	4.1	3.9	3.7	4.0	4.7	4.3	4.2
	Diploma/advanced diploma	0.1	0.2	0.1	0.1	0.1	0.2	0.1	0.1
Actual duration of training	Two years or less	23.9	28.3	26.0	25.6	24.7	29.8	26.9	25.8
	More than two years	7.7	8.3	11.6	8.0	7.3	9.1	12.3	8.0
Full-time status	Full-time	23.7	25.8	30.5	25.2	24.3	27.8	32.4	26.3
	Part-time	7.8	10.8	7.1	8.4	7.7	11.2	6.8	7.6
Total⁵		31.5	36.6	37.6	33.6	32.0	38.9	39.2	33.8

For notes on figures and tables, see page 20.

Table 12 Cancellations and withdrawals² in each quarter by selected training characteristics, Australia, 2005–10 ('000)

		30 Sept 2005	31 Dec 2005	31 Mar 2006	30 June 2006	30 Sept 2006	31 Dec 2006	31 Mar 2007	30 June 2007
Age	19 years and under	11.1	11.8	12.4	11.5	11.6	12.1	13.3	12.2
	20 to 24 years	8.2	8.3	8.7	8.1	8.0	8.4	8.9	8.3
	25 to 44 years	8.9	8.6	9.1	8.6	8.6	8.3	8.8	8.5
	45 years and over	3.0	2.8	2.9	2.8	2.7	2.7	2.7	2.9
Sex	Male	19.1	19.4	20.1	19.0	18.9	19.3	20.7	19.4
	Female	12.0	12.1	13.0	12.0	12.0	12.2	13.0	12.4
Occupation (ANZSCO) group	Managers and professionals	0.4	0.4	0.4	0.4	0.5	0.6	0.6	0.6
	Technicians and trades workers	10.2	10.5	11.4	11.1	11.0	11.3	12.5	12.0
	Community and personal service workers	3.7	4.2	4.5	3.7	3.8	4.1	4.3	4.2
	Clerical and administrative workers	4.6	4.3	4.7	4.5	4.6	4.5	4.8	4.8
	Sales workers	4.8	5.2	5.6	5.0	5.0	5.0	5.4	4.6
	Machinery operators and drivers	3.6	3.1	3.0	3.0	2.9	2.7	2.9	2.7
	Labourers	3.9	3.7	3.5	3.2	3.2	3.3	3.2	3.0
AQF qualification level	Certificate I or II	6.3	6.4	6.2	5.5	5.6	5.9	5.8	5.0
	Certificate III	22.1	22.4	24.1	22.6	22.4	22.6	24.7	23.5
	Certificate IV	2.7	2.5	2.8	2.8	2.8	2.9	3.1	3.2
	Diploma/advanced diploma	0.1	0.1	0.1	0.1	0.1	0.1	0.1	0.2
Duration until cancelled/withdrawn	Two years or less	28.8	29.0	30.8	28.5	28.5	29.3	31.1	29.4
	More than two years	2.4	2.4	2.4	2.5	2.4	2.2	2.6	2.5
Full-time status	Full-time	23.1	22.4	23.9	23.2	22.9	22.6	24.7	23.9
	Part-time	8.1	9.0	9.3	7.8	8.0	8.9	9.0	8.0
Total⁵		31.2	31.4	33.2	31.0	30.9	31.5	33.7	31.8

For notes on figures and tables, see page 20.

Table 11 (continued)

30 Sept 2007	31 Dec 2007	31 Mar 2008	30 June 2008	30 Sept 2008	31 Dec 2008	31 Mar 2009	30 June 2009	30 Sept 2009	31 Dec 2009	31 Mar 2010	30 June 2010	30 Sept 2010
5.4	9.1	7.5	6.3	6.5	10.5	7.8	6.5	7.2	10.8	8.6	6.7	7.7
10.2	11.8	15.1	10.9	10.9	13.0	15.0	11.0	10.9	12.6	15.5	11.2	11.5
11.8	12.8	11.0	12.1	12.0	13.8	12.0	12.7	12.7	14.0	12.6	13.3	13.4
6.0	6.8	5.2	6.5	6.1	7.3	5.6	6.4	6.5	7.5	6.3	7.4	7.0
18.8	22.5	23.4	19.7	19.7	25.3	24.7	20.5	20.4	24.6	25.9	21.2	21.6
14.6	17.9	15.4	16.2	15.7	19.2	15.7	16.2	16.8	20.3	17.0	17.4	18.0
0.7	1.0	0.7	1.2	1.1	2.0	1.1	1.4	1.2	2.1	1.4	1.1	1.4
8.1	10.4	13.8	9.1	9.0	11.8	14.7	9.7	9.6	12.4	16.1	11.0	11.6
5.3	7.2	5.9	6.3	6.0	6.9	5.5	5.8	6.0	7.5	6.0	5.6	5.7
6.6	7.7	7.2	6.9	7.1	8.5	7.1	7.2	7.4	9.0	7.5	7.8	7.6
4.8	5.2	4.3	5.0	5.3	6.2	4.7	5.1	6.0	6.3	5.7	6.3	6.8
4.8	4.9	3.6	4.1	3.9	5.0	3.9	4.3	3.8	3.5	3.5	3.9	3.8
3.3	3.9	3.3	3.3	3.1	4.0	3.4	3.0	3.2	4.1	2.8	2.9	2.8
4.8	6.7	4.9	4.8	5.0	6.9	4.8	4.8	5.5	6.9	4.9	4.5	5.1
24.2	28.4	29.2	26.0	25.3	31.1	30.5	26.5	25.7	29.7	31.5	26.4	27.0
4.4	5.2	4.5	4.9	5.0	6.0	4.9	5.1	5.8	7.8	6.1	7.2	6.8
0.1	0.2	0.2	0.2	0.2	0.4	0.3	0.3	0.3	0.5	0.4	0.5	0.7
25.3	30.6	26.2	27.4	26.9	33.8	27.4	28.0	28.5	34.5	29.3	29.4	29.5
8.1	9.8	12.6	8.6	8.6	10.6	13.1	8.7	8.8	10.5	13.7	9.2	10.1
25.7	28.9	31.8	27.3	26.8	32.1	32.8	27.9	27.2	31.3	33.8	28.7	28.3
7.7	11.6	7.1	8.7	8.7	12.4	7.6	8.8	10.1	13.6	9.1	9.9	11.3
33.5	40.5	38.8	35.9	35.5	44.5	40.5	36.7	37.3	44.9	42.9	38.6	39.6

Table 12 (continued)

30 Sept 2007	31 Dec 2007	31 Mar 2008	30 June 2008	30 Sept 2008	31 Dec 2008	31 Mar 2009	30 June 2009	30 Sept 2009	31 Dec 2009	31 Mar 2010	30 June 2010	30 Sept 2010
12.3	13.5	13.5	13.1	12.9	13.4	12.6	11.2	10.9	11.9	12.8	12.0	11.9
8.6	8.8	8.7	8.3	8.7	8.5	8.2	7.6	7.6	8.1	8.3	8.2	8.7
8.8	8.5	8.5	8.7	9.2	8.7	8.2	8.1	8.7	8.4	8.5	8.8	9.3
2.8	2.7	2.6	2.7	3.0	2.7	2.7	2.9	3.1	2.9	2.9	2.9	3.1
20.0	20.7	20.4	20.4	20.8	20.5	19.6	18.5	18.6	19.3	20.1	19.7	20.3
12.6	12.8	12.9	12.5	13.0	12.9	12.1	11.3	11.6	11.9	12.3	12.2	12.8
0.7	0.8	0.8	0.8	0.9	0.9	0.9	0.9	1.0	0.7	0.8	0.9	0.9
12.3	13.0	13.1	13.4	13.6	13.2	13.0	12.6	12.2	12.6	13.8	13.6	14.1
4.1	4.2	4.2	4.1	4.2	4.4	4.2	3.8	4.0	4.4	4.4	4.2	4.1
4.9	4.7	4.7	4.7	4.9	4.5	4.4	4.2	4.5	4.3	4.6	4.9	5.0
4.7	5.1	5.3	4.6	4.7	5.0	4.6	4.4	3.9	4.5	4.3	4.2	4.2
2.7	2.7	2.5	2.5	2.6	2.4	2.1	1.7	1.9	1.9	1.9	1.8	1.9
3.2	3.0	2.8	2.8	3.0	3.0	2.5	2.2	2.7	2.9	2.6	2.3	2.9
5.2	5.6	5.1	4.7	4.8	5.2	4.6	4.0	4.1	4.6	4.2	3.9	3.9
24.1	24.8	24.9	24.8	25.3	24.7	23.3	21.9	21.6	22.2	23.6	23.2	23.9
3.1	3.0	3.0	3.1	3.3	3.0	3.4	3.5	4.0	4.0	4.2	4.3	4.5
0.2	0.2	0.2	0.3	0.3	0.4	0.3	0.4	0.4	0.4	0.4	0.6	0.7
30.2	31.3	31.1	30.5	31.4	31.2	29.4	27.4	27.9	29.0	30.0	29.4	30.4
2.4	2.2	2.3	2.3	2.4	2.2	2.3	2.4	2.2	2.2	2.4	2.5	2.6
24.3	24.3	24.8	24.8	25.3	23.8	23.1	21.7	21.9	21.7	23.3	23.4	24.4
8.3	9.2	8.5	8.0	8.5	9.6	8.6	8.0	8.3	9.5	9.1	8.6	8.7
32.6	33.5	33.3	32.8	33.8	33.4	31.7	29.8	30.2	31.2	32.4	31.9	33.1

Table 13 In-training in top 20 training packages by state/territory, as at 30 September 2010 ('000)

Training package	NSW	Vic	Qld	SA	WA	Tas	NT	ACT	Australia
Business Services (BSA, BSB)	24.3	11.0	16.1	6.1	1.6	1.8	0.4	0.7	61.9
Construction, Plumbing & Services Integrated Framework (BCF, BCG, BCP, CPC)	14.1	18.5	11.7	3.4	3.0	1.4	0.4	1.1	53.6
Retail Services (SIR, WRP, WRR, WRW)	12.5	13.2	7.4	4.1	1.8	1.1	0.3	0.5	40.9
Tourism, Hospitality and Events (SIT, THH, THT)	14.0	9.9	5.8	1.5	2.0	1.0	0.3	1.0	35.4
Electrotechnology (UEE, UTE, UTL)	8.8	7.4	6.9	2.5	3.5	0.8	0.5	0.7	31.2
Automotive Industry Retail, Service and Repair (AUR)	9.0	6.7	5.8	2.4	3.2	0.7	0.4	0.4	28.6
Metal and Engineering (MEM)	5.8	5.6	7.9	1.7	4.4	0.7	0.2	0.1	26.3
Transport and Logistics (TDT, TLI)	10.4	5.4	4.5	1.9	2.6	0.4	0.2	0.2	25.6
Community Services (CHC)	8.7	6.0	3.8	1.0	2.3	0.8	0.4	0.9	24.0
Manufacturing (MCM, MSA)	5.8	4.6	1.7	0.4	1.1	0.0	0.0	0.0	13.6
Hairdressing (WRH)	3.7	2.4	3.0	0.9	1.3	0.3	0.1	0.3	12.0
Resources and Infrastructure (BCC, DRT, MNC, MNM, MNQ, RII)	2.2	0.6	2.4	0.6	1.9	0.4	0.2	0.0	8.4
Food Processing Industry (FDF)	2.3	2.6	1.4	0.9	0.5	0.3	0.0	0.1	8.1
Australian Meat Industry (MTM)	2.0	1.4	2.4	0.8	0.7	0.2	0.0	0.1	7.5
Amenity Horticulture (RTF, RUH)	2.0	2.5	1.4	0.8	0.3	0.2	0.1	0.1	7.3
Financial Services (FNA, FNB, FNS)	3.0	1.1	1.8	0.4	0.4	0.1	0.1	0.1	7.0
Health (HLT)	2.6	2.7	0.5	0.2	0.2	0.2	0.0	0.2	6.6
Furnishing (LMF)	1.2	1.8	1.5	0.5	0.8	0.2	0.1	0.1	6.3
Asset Maintenance (PRM)	2.4	0.9	1.0	0.2	0.2	0.2	0.1	0.2	5.1
Rural Production (RTE, RUA)	0.9	1.2	0.5	0.4	0.3	0.1	0.1	-	3.6
Top 20 training packages sub-total ('000)	135.8	105.3	87.6	30.7	32.3	10.8	3.9	6.7	413.1
Other training packages	9.9	7.1	6.5	2.7	3.7	1.0	0.5	0.9	32.3
All training packages ('000)	145.7	112.4	94.1	33.4	36.0	11.7	4.4	7.6	445.4
Non-training packages	0.8	0.4	0.4	0.0	1.6	0.2	0.0	0.0	3.4
Total number ('000)	146.5	112.8	94.5	33.4	37.6	11.9	4.4	7.6	448.8
Training packages as proportion of total (%)	99.5	99.6	99.6	99.9	95.9	98.1	99.5	99.9	99.2

A dash (-) represents a true zero figure, with no contracts reported in these categories.

For notes on figures and tables, see page 20.

Table 14 Commencements in top 20 training packages by state/territory, September quarter 2010 ('000)

Training package	NSW	Vic	Qld	SA	WA	Tas	NT	ACT	Australia
Business Services (BSA, BSB)	5.8	3.8	4.5	1.4	0.5	0.5	0.1	0.2	16.8
Retail Services (SIR, WRP, WRR, WRW)	2.6	4.4	1.8	0.7	0.6	0.3	0.1	0.1	10.5
Tourism, Hospitality and Events (SIT, THH, THT)	2.7	2.6	1.3	0.3	0.5	0.2	0.1	0.2	7.8
Transport and Logistics (TDT, TLI)	2.1	1.2	0.8	0.3	0.7	0.1	0.0	0.1	5.4
Community Services (CHC)	1.7	1.2	0.8	0.2	0.5	0.2	0.1	0.2	5.0
Construction, Plumbing & Services Integrated Framework (BCF, BCG, BCP, CPC)	1.1	1.8	0.9	0.4	0.5	0.1	0.0	0.1	4.9
Manufacturing (MCM, MSA)	1.0	1.5	0.3	0.0	0.3	-	0.0	-	3.0
Automotive Industry Retail, Service and Repair (AUR)	0.6	0.7	0.5	0.3	0.3	0.1	0.0	0.0	2.6
Electrotechnology (UEE, UTE, UTL)	0.5	0.6	0.4	0.2	0.3	0.0	0.0	0.1	2.1
Australian Meat Industry (MTM)	0.4	0.3	0.7	0.1	0.1	0.1	0.0	0.0	1.7
Metal and Engineering (MEM)	0.3	0.3	0.5	0.1	0.3	0.0	0.0	0.0	1.6
Financial Services (FNA, FNB, FNS)	0.6	0.3	0.4	0.1	0.1	0.0	0.0	0.0	1.6
Food Processing Industry (FDF)	0.3	0.5	0.4	0.1	0.1	0.0	0.0	0.0	1.5
Asset Maintenance (PRM)	0.5	0.2	0.3	0.1	0.1	0.0	-	0.1	1.3
Hairdressing (WRH)	0.4	0.2	0.4	0.1	0.2	0.0	0.0	0.0	1.3
Resources and Infrastructure (BCC, DRT, MNC, MNM, MNQ, RII)	0.4	0.1	0.4	0.1	0.3	0.0	0.0	-	1.3
Health (HLT)	0.5	0.5	0.1	0.0	0.1	0.0	0.0	0.0	1.2
Amenity Horticulture (RTF, RUH)	0.3	0.3	0.2	0.2	0.0	0.0	0.0	0.0	1.0
Rural Production (RTE, RUA)	0.2	0.2	0.1	0.1	0.1	0.0	0.0	-	0.6
Property Services (CPP, PRD, PRS)	0.3	0.1	0.1	0.0	0.1	0.0	0.0	0.0	0.6
Top 20 training packages sub-total	22.1	20.9	14.8	4.9	5.6	1.9	0.5	1.0	71.8
Other training packages	1.4	1.0	1.1	0.4	0.7	0.2	0.1	0.1	5.1
All training packages ('000)	23.4	21.9	16.0	5.3	6.3	2.1	0.7	1.2	76.9
Non-training packages	0.0	0.0	0.0	0.0	0.0	0.0	-	-	0.1
Total number ('000)	23.5	22.0	16.0	5.3	6.3	2.1	0.7	1.2	77.0
Training packages as proportion of total (%)	99.9	99.8	99.9	100.0	99.8	99.9	100.0	100.0	99.9

A dash (-) represents a true zero figure, with no contracts reported in these categories.

For notes on figures and tables, see page 20.

Training activity: 12-month ending series

Table 15 Commencements in 12 months ending 30 September, Australia, 2005–10 ('000)

		12 months ending 30 September					
		2005	2006	2007	2008	2009	2010
Age	19 years and under	108.5	108.5	114.2	119.1	99.9	113.3
	20 to 24 years	46.0	45.9	48.5	49.0	44.8	52.5
	25 to 44 years	78.0	77.9	80.7	85.1	84.8	96.4
	45 years and over	31.4	32.4	33.0	35.7	37.9	43.2
Sex	Male	156.9	155.1	162.4	167.4	149.8	174.7
	Female	107.0	109.5	114.0	121.5	117.6	130.7
Occupation (ANZSCO) group	Managers and professionals	3.7	6.5	9.4	10.9	8.0	13.8
	Technicians and trades workers	73.8	75.1	83.3	88.4	75.7	92.8
	Community and personal service workers	38.4	38.9	41.1	42.6	43.1	43.8
	Clerical and administrative workers	46.5	47.6	49.8	53.7	54.2	60.2
	Sales workers	39.9	40.3	39.6	42.3	40.3	46.4
	Machinery operators and drivers	32.4	28.8	27.3	26.5	22.0	23.5
	Labourers	29.2	27.2	25.9	24.5	24.0	25.0
AQF qualification level	Certificate I or II	49.5	44.3	43.1	42.1	37.3	35.9
	Certificate III	185.8	187.5	195.3	201.9	174.8	199.5
	Certificate IV	27.7	31.7	35.8	41.3	51.3	58.2
	Diploma/advanced diploma	0.9	1.1	2.2	3.6	4.1	11.8
Full-time status	Full-time	195.9	195.8	204.2	209.4	185.3	215.0
	Part-time	68.0	68.8	72.2	79.5	82.1	90.4
Total⁵		263.8	264.6	276.4	288.9	267.4	305.4

For notes on figures and tables, see page 20.

Table 16 Completions in 12 months ending 30 September, Australia, 2005–10 ('000)

		12 months ending 30 September					
		2005	2006	2007	2008	2009	2010
Age	19 years and under	24.7	26.5	26.6	29.4	32.0	33.8
	20 to 24 years	41.4	43.5	46.0	48.7	50.0	50.9
	25 to 44 years	47.4	46.0	47.9	48.0	51.2	53.3
	45 years and over	24.0	23.9	24.9	24.5	25.8	28.2
Sex	Male	76.1	78.5	82.9	85.4	91.0	93.2
	Female	61.4	61.3	62.5	65.3	67.9	72.8
Occupation (ANZSCO) group	Managers and professionals	1.9	2.1	2.9	4.1	5.8	5.9
	Technicians and trades workers	29.9	33.5	38.4	42.4	45.9	51.0
	Community and personal service workers	20.7	22.9	22.5	25.4	24.3	24.8
	Clerical and administrative workers	30.2	28.6	28.1	28.8	30.3	31.9
	Sales workers	19.7	19.1	18.7	19.9	22.0	25.2
	Machinery operators and drivers	19.1	18.9	19.3	16.5	17.0	14.7
	Labourers	16.2	14.7	15.4	13.6	13.5	12.7
AQF qualification level	Certificate I or II	25.9	23.5	22.2	21.4	22.0	21.3
	Certificate III	98.3	100.1	105.0	108.9	113.8	114.7
	Certificate IV	12.9	15.8	17.6	19.6	21.7	27.9
	Diploma/advanced diploma	0.5	0.5	0.6	0.8	1.3	2.1
Actual duration of training	Two years or less	102.5	104.6	107.8	111.0	117.7	122.6
	More than two years	35.0	35.2	37.6	39.6	41.1	43.4
Full-time status	Full-time	105.3	105.7	112.2	114.7	120.0	122.1
	Part-time	32.2	34.1	33.2	35.9	38.8	43.9
Total⁵		137.5	139.9	145.4	150.7	158.9	166.1

For notes on figures and tables, see page 20.

Table 17 Commencements by occupation and state/territory, 12 months ending 30 September 2010 ('000)

Occupation (ANZSCO) group	NSW	Vic	Qld	SA	WA	Tas	NT	ACT	Australia
Managers	1.8	2.6	4.7	1.3	0.7	0.5	0.1	0.4	12.0
11 Chief executives, general managers and legislators	-	-	-	-	-	-	-	-	-
12 Farmers and farm managers	0.2	0.3	0.2	0.2	0.2	0.1	0.0	-	1.2
13 Specialist managers	1.4	2.1	4.2	1.0	0.4	0.4	0.0	0.2	9.8
14 Hospitality, retail and service managers	0.1	0.2	0.3	0.1	0.1	0.0	0.0	0.2	1.0
Professionals	0.4	0.3	0.4	0.4	0.1	0.0	0.0	0.1	1.8
21 Arts and media professionals	0.0	0.0	0.0	-	-	-	-	-	0.0
22 Business, human resource and marketing professionals	0.3	0.2	0.2	0.0	0.1	0.0	0.0	0.0	0.8
23 Design, engineering, science and transport professionals	0.1	0.1	0.2	0.0	0.1	0.0	0.0	0.0	0.5
24 Education professionals	-	0.0	0.0	0.3	-	-	-	0.0	0.4
25 Health professionals	0.0	-	-	-	-	-	-	-	0.0
26 ICT professionals	0.0	-	-	0.0	-	0.0	-	0.0	0.0
27 Legal, social and welfare professionals	0.0	0.0	0.0	0.0	-	-	-	-	0.1
Technicians and trades workers	26.9	24.3	19.6	6.8	10.5	2.4	0.9	1.4	92.8
31 Engineering, ICT and science technicians	1.1	0.4	1.4	0.4	1.0	0.2	0.0	0.1	4.6
32 Automotive and engineering	5.5	4.1	4.6	1.4	2.8	0.4	0.2	0.2	19.4
33 Construction trades workers	6.1	8.2	4.2	1.5	2.1	0.7	0.2	0.4	23.5
34 Electrotechnology and telecommunications trades workers	3.5	2.9	2.2	1.0	1.5	0.3	0.2	0.2	11.8
35 Food trades workers	3.0	3.0	2.5	0.7	0.8	0.4	0.1	0.2	10.6
36 Skilled animal and horticultural workers	1.4	1.5	1.0	0.6	0.3	0.1	0.0	0.1	5.1
39 Other technicians and trades workers	6.2	4.1	3.6	1.1	2.0	0.3	0.2	0.2	17.7
391 Hairdressers	1.9	1.3	1.5	0.5	0.6	0.1	0.0	0.1	6.0
392 Printing trades workers	0.1	0.3	0.1	0.2	0.0	0.0	0.0	0.0	0.8
393 Textile, clothing and footwear trades workers	0.0	0.0	0.0	0.0	0.0	0.0	-	0.0	0.1
394 Wood trades workers	0.4	0.5	0.5	0.2	0.3	0.0	0.0	0.0	2.0
399 Miscellaneous	3.8	2.0	1.5	0.3	1.0	0.0	0.1	0.1	8.8
Community and personal service workers	14.9	13.6	6.7	1.8	3.8	1.3	0.5	1.2	43.8
41 Health and welfare support workers	1.7	1.4	0.7	0.1	0.4	0.3	0.0	0.1	4.7
42 Carers and aides	4.4	3.2	1.9	0.5	1.2	0.3	0.2	0.5	12.4
43 Hospitality workers	6.8	6.4	2.6	0.7	1.3	0.5	0.1	0.5	18.8
44 Protective service workers	0.3	0.1	0.2	0.1	0.3	0.0	0.0	0.1	1.1
45 Sports and personal service workers	1.6	2.5	1.3	0.4	0.6	0.1	0.1	0.1	6.8
Clerical and administrative workers	23.2	14.1	12.5	4.7	3.0	1.4	0.4	0.8	60.2
51 Office managers and program administrators	12.0	4.3	6.3	2.3	0.3	0.5	0.1	0.5	26.2
52 Personal assistants and secretaries	-	0.0	-	-	-	-	-	-	0.0
53 General clerical workers	3.5	2.7	2.8	1.0	1.3	0.5	0.2	0.2	12.3
54 Inquiry clerks and receptionists	3.7	4.2	1.3	0.8	0.4	0.4	0.0	0.0	10.8
55 Numerical clerks	2.6	0.9	1.5	0.3	0.5	0.1	0.0	0.1	6.0
56 Clerical and office support workers	-	-	-	-	-	-	-	-	-
59 Other clerical and administrative workers	1.5	1.9	0.7	0.3	0.6	0.0	0.0	0.0	5.0
Sales workers	12.9	16.0	8.8	4.1	2.3	1.3	0.4	0.6	46.4
61 Sales representatives and agents	2.6	0.4	1.3	0.2	0.2	0.1	0.0	0.1	4.8
62 Sales assistants and salespersons	10.3	15.6	7.6	3.9	2.2	1.2	0.3	0.5	41.5
63 Sales support workers	-	-	-	-	-	-	-	-	-
Machinery operators and drivers	8.2	4.8	4.9	2.1	2.8	0.3	0.3	0.2	23.5
71 Machine and stationary plant operators	1.1	0.6	1.0	0.6	1.2	0.1	0.1	0.0	4.6
72 Mobile plant operators	0.6	0.3	0.9	0.2	0.2	0.0	0.1	0.0	2.4
73 Road and rail drivers	3.2	1.6	1.7	0.8	0.7	0.1	0.1	0.1	8.3
74 Storepersons	3.3	2.3	1.3	0.4	0.6	0.1	0.1	0.0	8.1
Labourers	7.2	6.8	5.3	1.6	2.8	0.6	0.3	0.3	25.0
81 Cleaners and laundry workers	1.6	0.7	1.3	0.3	0.3	0.1	0.1	0.2	4.5
82 Construction and mining labourers	0.8	0.0	0.3	0.0	0.5	0.0	0.0	0.1	1.8
83 Factory process workers	3.0	4.9	2.6	1.0	1.2	0.2	0.0	0.0	13.0
84 Farm, forestry and garden workers	1.1	0.5	0.6	0.2	0.5	0.2	0.1	0.0	3.2
85 Food preparation assistants	0.1	0.1	0.0	0.0	0.1	0.0	0.0	0.0	0.4
89 Other labourers	0.6	0.5	0.5	0.1	0.3	0.1	0.0	0.0	2.2
Total⁵	95.5	82.5	62.9	22.6	26.1	8.0	2.8	4.9	305.4

A dash (-) represents a true zero figure, with no contracts reported in these categories.

For notes on figures and tables, see page 20.

Table 18 Commencements by industry skills councils, 12 months ending 30 September 2010, Australia ('000)

Industry skills councils	Trades ³	Non-trades ³	Total
AgriFood	9.1	12.4	21.5
Community Services and Health	1.5	22.5	24.0
Construction and Property Services	23.0	7.5	30.5
ElectroComms and Energy Utilities	11.5	0.2	11.7
ForestWorks	0.0	0.9	0.9
Government	0.0	2.6	2.6
Innovation and Business	3.4	63.1	66.5
Manufacturing	29.8	9.5	39.2
Service	12.9	68.6	81.5
SkillsDMC	1.2	5.1	6.3
Transport and Logistics	-	20.0	20.0
Training packages not assigned to industry skills councils	-	-	-
Training package qualifications total	92.5	212.3	304.8
Non-training package qualifications total	0.3	0.3	0.6
Total	92.8	212.6	305.4

A dash (-) represents a true zero figure, with no contracts reported in these categories.

For notes on figures and tables, see page 20.

Seasonally adjusted commencements

Table 19 Seasonally adjusted commencements in each quarter, by state/territory, 2005–10 ('000)

Quarter	NSW	Vic	Qld	SA	WA	Tas	NT	ACT	Australia
September 2005	18.2	20.5	13.3	5.4	5.2	1.9	0.6	1.2	66.3
December 2005	18.5	20.6	13.6	5.3	5.3	1.9	0.6	1.3	67.0
March 2006	18.6	19.7	13.8	5.0	5.4	1.8	0.6	1.3	66.3
June 2006	18.7	18.7	14.1	4.9	5.4	1.8	0.6	1.3	65.6
September 2006	19.0	18.3	14.5	5.0	5.5	1.9	0.6	1.4	66.1
December 2006	19.6	18.3	15.0	5.2	5.6	2.0	0.5	1.4	67.5
March 2007	20.1	18.4	15.5	5.3	5.7	2.0	0.5	1.3	68.9
June 2007	20.3	18.0	15.9	5.3	5.7	2.0	0.6	1.2	68.9
September 2007	20.4	17.6	15.8	5.2	5.8	2.0	0.6	1.2	68.6
December 2007	21.3	17.8	16.0	5.3	5.9	2.1	0.7	1.3	70.4
March 2008	22.8	18.4	16.2	5.4	6.1	2.2	0.7	1.2	73.0
June 2008	23.5	18.9	16.0	5.5	6.3	2.1	0.7	1.2	73.9
September 2008	22.8	18.7	14.9	5.5	6.3	2.0	0.6	1.1	71.9
December 2008	21.4	18.1	13.6	5.3	6.0	1.9	0.6	1.2	68.1
March 2009	20.4	17.8	13.0	5.2	5.7	1.8	0.6	1.2	65.7
June 2009	20.7	17.8	13.5	5.0	5.6	1.8	0.7	1.3	66.3
September 2009	21.5	18.3	14.3	5.2	5.8	1.8	0.7	1.2	68.7
December 2009	22.5	19.2	14.9	5.4	6.1	1.8	0.7	1.2	71.9
March 2010	23.5	20.2	15.5	5.6	6.4	1.9	0.7	1.2	75.1
June 2010	24.3	21.0	15.9	5.7	6.7	2.1	0.7	1.2	77.6
September 2010	24.7	21.5	16.3	5.7	6.8	2.1	0.7	1.2	78.9

For notes on figures and tables, see page 20.

Terms

Australian Qualifications Framework (AQF) is a national framework of credentials that covers qualifications from certificate I through to a doctoral degree. For more details on the AQF, go to <<http://www.aqf.edu.au>>.

Australian and New Zealand Standard Classification of Occupations (ANZSCO) is a classification of the occupation of individuals. The classification is based on the Australian Bureau of Statistics publication, *Australian and New Zealand Standard Classification of Occupations* (1st edition, ABS cat.no.1220.0).

Cancellations and withdrawals refers to apprentices and trainees whose contract of training has been terminated prior to a successful completion. Cancellation and withdrawal figures also include contracts which have been transferred, due to a change in employer. 'Transferred' is a new contract status which was historically reported as a cancellation or withdrawal.

Commencements refers to apprentices and trainees starting a program of training. The date of commencement is the date that an apprentice or trainee's contract of training is registered or approved under the provisions of the relevant state/territory legislation.

Completions refers to apprenticeship or traineeship contracts of training in which all of the prescribed requirements have been met.

Contract status indicates the status of apprentice and trainee contracts of training, including the commencement, completion, and cancellation/withdrawal of contracts, and apprentices and trainees 'in-training'.

Existing workers refers to those apprentices and trainees who were employed by their current employer for more than three months full-time (or 12 months part-time/casual) prior to commencing their training contract.

Full-time apprentices or trainees are those whose ordinary hours of employment, including the training component, are at least the usual hours of employment for a full-time employee in that occupation.

Industry skills councils are organisations representing particular industries. For more information on industry skills councils, go to <<http://www.isc.org.au>>. For more information on training packages developed by industry skills councils, go to <<http://www.ntis.gov.au>>.

In-training refers to apprentices and trainees who are actively training, at the end of each quarter, under the terms of their training contract, and who have not completed, cancelled, withdrawn or suspended their training, nor had their training contract expire without meeting all of the prescribed requirements of their program.

Non-trades refers to those apprentices and trainees employed in occupations outside the trades. 'Non-trades' includes all occupations listed under ANZSCO 1st edition, with the exception of major group 3 (Technicians and trades workers).

Part-time apprentices or trainees are defined as those whose ordinary hours of employment, including the training component, are less than full-time. Part-time provisions vary across Australia and across occupations, with 'part-time' defined by each state and territory.

Seasonal adjustment refers to a mathematical model used in time series data to smooth out fluctuations attributable to seasonal influences.

Trades refers to those apprentices and trainees employed in trades occupations under major group 3 (Technicians and trades workers) of ANZSCO 1st edition.

Training duration indicates the amount of time that an apprentice or trainee takes to complete their contract of training from the time of commencement.

Training packages are a set of nationally endorsed standards, guidelines and qualifications for training and for recognising and assessing skills. For more details on training packages, go to <<http://www.ntis.gov.au>>.

12-month ending series refers to the total number of commencements, completions and cancellations/withdrawals within a 12-month period (i.e. summing the current quarter with the previous three quarters).

Technical notes

Data source

Information included in this publication is, unless stated otherwise, derived from the National Apprentice and Trainee Collection, no.66, December 2010 estimates, which is compiled under the Australian Vocational Education and Training Management Information Statistical Standard (AVETMISS) for Apprentice and Trainee Collection Specifications, Release 6.0, March 2008.

Estimation procedure

This publication contains figures on apprentice and trainee activity (such as commencements, completions and in-training) based on the date of effect rather than the date of processing. Due to lags in processing, the most recent figures in this publication are estimated (for training activity from March quarter 2009 to September quarter 2010). The estimation method involves weighting recently processed numbers based on average reporting lags. Because estimates are revised for up to seven quarters, figures for the last two years may differ from those published in earlier or in subsequent reports. Further details on the methodology can be found at <<http://www.ncver.edu.au/publications/2267.html>>.

Seasonal adjustments

Seasonally adjusted data in this publication are derived from table 2 for in-training, table 4 for commencements, table 6 for completions and table 8 for cancellations and withdrawals. These data are adjusted using X-11-ARIMA methodology and then are 7-point Henderson smoothed. The seasonally adjusted data used in figures 1–3 are available at <<http://www.ncver.edu.au/publications/2346.html>>.

Notes on figures and tables

Due to lags in processing numbers, recent quarter activity is estimated. Proportions (percentages) may be subject to error as they are based on a sample, not the total population. Figures in bold are actual numbers.

See <<http://www.ncver.edu.au/publications/2346.html>> for the standard errors on these estimates.

- 1 The data have been seasonally adjusted and smoothed. For further information please refer to the technical notes on page 19.
- 2 The cancellation and withdrawal figures are inclusive of the new contract status 'transferred', as contract transfers were historically reported as cancellations or withdrawals.
- 3 Non-trades are defined as all major occupations groups 1–2 and 4–8 (ANZSCO 1st edition). Trades are defined as all major group 3 (Technicians and trades workers) (ANZSCO 1st edition).
- 4 The data presented in figure 3 use ANZSCO. ANZSCO has now been back-cast by NCVER to 1994 for reporting purposes. For further information on the methodology, see <<http://www.ncver.edu.au/publications/2266.html>>.
- 5 Unknown data have not been reported, whereas the total includes all contracts, including those with unknown status. Hence, some figures may not sum to the total.



National Centre for Vocational Education Research Ltd
Level 11, 33 King William Street, Adelaide, South Australia
PO Box 8288, Station Arcade, SA 5000 Australia
Telephone +61 8 8230 8400 Facsimile +61 8 8212 3436
Website www.ncver.edu.au Email ncver@ncver.edu.au