



9th annual comparative analysis of the Racine Unified School District

*Demographics, attendance, finances,
student engagement, and performance*

February 2007

Submitted by:

Jeffrey C. Browne, President
Jeffrey K. Schmidt, Researcher
Melissa Lemke, Research Intern

Commissioned by:

Education Racine, Inc.

Table of contents

Summary	4
Enrollment characteristics	5
Demographic characteristics	8
Finances	10
Staffing	15
Student engagement	17
Student performance	21
Rankings	35
Appendix A — Definition of terms	A1
Appendix B — Individual school reports	B1

9th annual comparative analysis of the Racine Unified School District

Summary

Over the past decade, the conditions affecting the Racine Unified School District (RUSD) as well as the school outcomes have changed in some ways — and remained remarkably stable in other ways. Therefore, more than in previous report, this 9th analysis of RUSD takes a more long-term view. Even so, this study follows a format similar to that of the first report commissioned in 1998. The analysis compares RUSD to nine peer school districts and the state of Wisconsin. RUSD peer districts, for the most part, are Wisconsin's largest (Milwaukee Public Schools is not included) and their enrollments are similar to the enrollment in Racine. Each district is examined based on enrollment, finances, staffing, student engagement, and student performance. Data collected for the analyses over the past nine years makes it possible to provide a snapshot of how RUSD is faring and puts the latest information in a historical context.

Major Findings

Enrollment: RUSD enrollment for 2005-06 decreased 0.3%, to 21,175. RUSD was the third largest in the state when the study was first undertaken, but was overtaken by Kenosha Unified three years ago and now is the fourth largest - behind districts serving Milwaukee, Madison, and Kenosha. As total enrollment in the district decreased, the enrollment of minority students continued to increase.

Student diversity: RUSD is moving toward a majority minority enrollment, primarily because of a rapid growth of Asian and Hispanic students. African American enrollment has increased modestly in recent years, and white enrollment has declined somewhat. Overall, 46.5% of students who attended RUSD were minority in 2005-06, up from 36.9% in 1997-98.

Finances: State aid to RUSD increased 10.1% while property taxes dropped 6.6% last year. The district ranked third in state aid and ninth out of 10 districts in property taxes collected per pupil. The tax rate for 2006 was \$6.76 per \$1,000 of property value. Racine was third in revenue per pupil and fifth or sixth in every spending category. RUSD spent \$9,997 per pupil.

Student engagement: For the third consecutive year, RUSD improved its truancy rate. The 2005 rate was 9.7%, the lowest it has been since 1997. This was close to the statewide rate of 9.5%.

Extracurricular activity: During 2005-06 participation in athletics and music declined somewhat whereas participation in academic extracurricular activities improved, increasing by one percentage point to a 12.5% student participation rate.

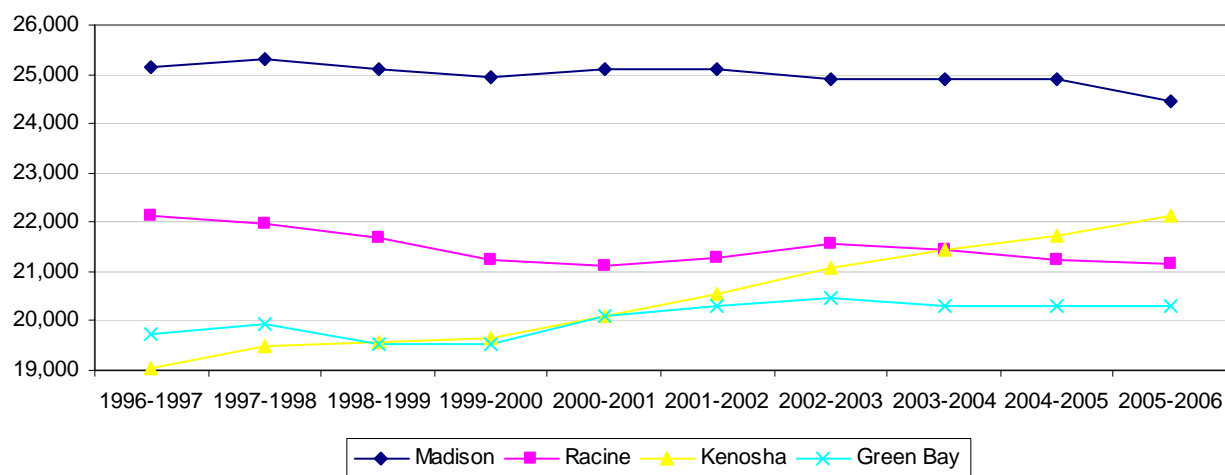
Discipline: Suspension and expulsion rates in RUSD increased in 2004-05. Compared to peer districts, it had the highest rates for both suspensions and expulsions. In 2004-05, 202 students were expelled, more than twice the 87 expelled the prior year.

Student performance: Student performance measurements yielded mixed findings. Students in the 4th grade scored lower in both reading and math than in the previous year. Reading scores in the 10th grade also declined. Scores in both reading and math in 8th grade and math scores in 10th grade increased from last year.

Enrollment characteristics

For the third year in a row, RUSD's total enrollment decreased, making it the fourth largest school district in the state, behind only Milwaukee, Madison, and Kenosha. During the three years, RUSD lost 1.3% of its total student population; 0.2% of that loss occurred between 2004-05 and 2005-06. RUSD had the third greatest net loss in student enrollment among peer districts. Only Madison and Oshkosh had greater losses. Declining enrollment in the district has occurred since 1997. **Figure 1** shows a decrease in enrollment over a nine-year period.

Figure 1: Public school enrollment trend, 1996 to 2006

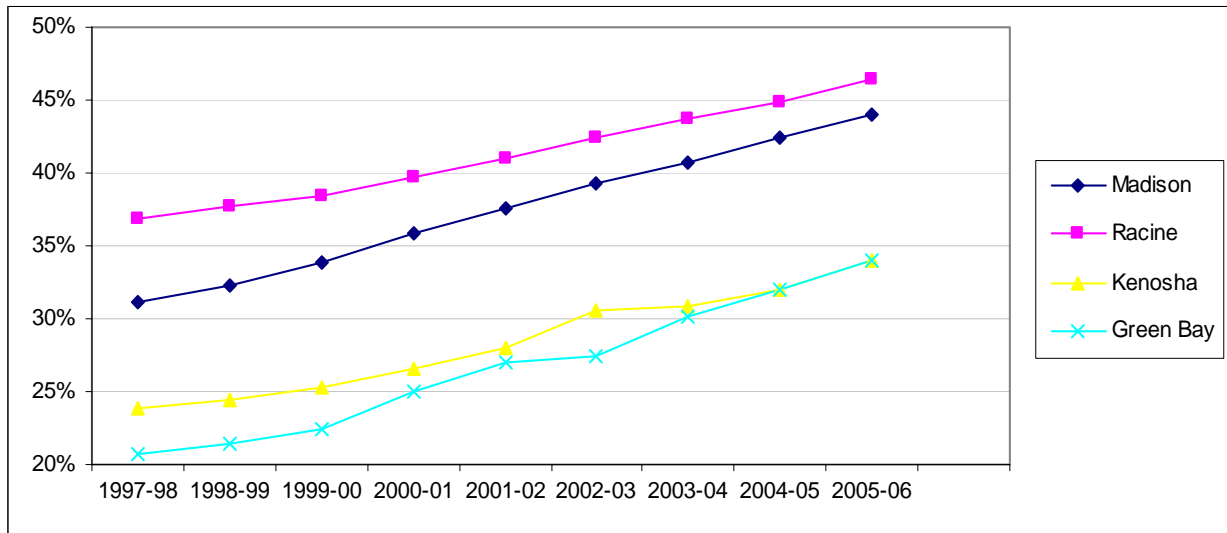


RUSD enrolled the highest percentage of minority students among peers for the ninth straight year. **Table 1** shows the district's minority enrollment statistics. Minority enrollment increased to 46.5% of total enrollment from 2004-05 to 2005-06. Madison followed closely with 43.9%. RUSD's white-student enrollment decreased from 2004-05 to 2005-06. Although the number of white students decreased, enrollment increased in every minority group.

Table 1: Enrollment by race among peer districts, 2005-06

Enrollment	Overall		Racial composition								
	2005-06	1-year change	White	African American	Asian	Hispanic	Indian	% black	Rank	% minority	Rank
Madison	24,452	-1.8%	13,706	5,199	2,568	2,830	149	21.3%	2	43.9%	2
Kenosha	22,131	1.8%	14,620	3,347	379	3,703	82	15.1%	3	33.9%	4
Racine	21,175	-0.3%	11,334	5,575	329	3,861	76	26.3%	1	46.5%	1
Green Bay	20,314	0.1%	13,403	1,152	1,650	3,081	1,028	5.7%	4	34.0%	3
Appleton	15,213	1.0%	12,301	428	1,586	780	118	2.8%	9	19.1%	7
Waukesha	13,611	2.2%	10,992	458	391	1,707	63	3.4%	6	19.2%	6
Eau Claire	10,809	3.6%	9,239	230	1,033	169	138	2.1%	10	14.5%	8
Janesville	10,589	-0.2%	9,121	586	225	611	46	5.5%	5	13.9%	9
Oshkosh	10,230	-0.6%	8,827	311	752	286	54	3.0%	7	13.7%	10
Sheboygan	10,278	0.3%	8,457	348	1,861	1,250	80	2.9%	8	29.5%	5
Milwaukee	92,395	-1.3%	15,087	53,870	4,139	18,525	774	58.3%		83.7%	
Wisconsin	875,174	1.2%	680,760	91,606	31,104	59,012	12,692	10.5%		22.2%	

Figure 2: Minority enrollment among peer districts, 9-year comparison



Retention statistics for 2005-06 were encouraging for RUSD. Over the last five years, RUSD has gone from retaining 65% of its freshmen class as seniors four years later, to retaining 86%. The retention rate for African-American high school students has improved since 2002 from 45% to 72%; for Hispanics, the rate has grown from 45% to 83%. White high school students in RUSD continue to have the highest retention rates: 77% in 2002 and 92% in 2006.

Figure 3: RUSD class of 2006 cohort analysis, high school enrollment by ethnicity

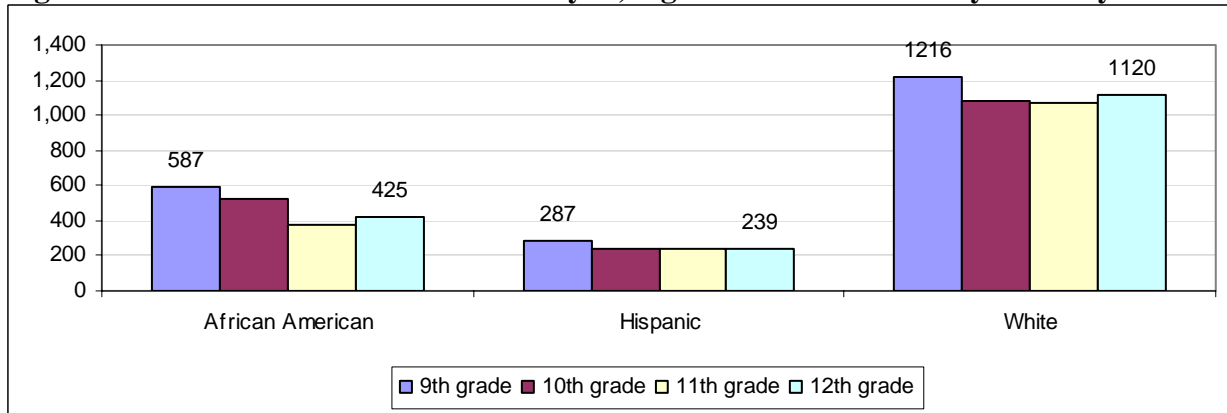


Figure 4: RUSD class of 2002 cohort analysis, high school enrollment by ethnicity

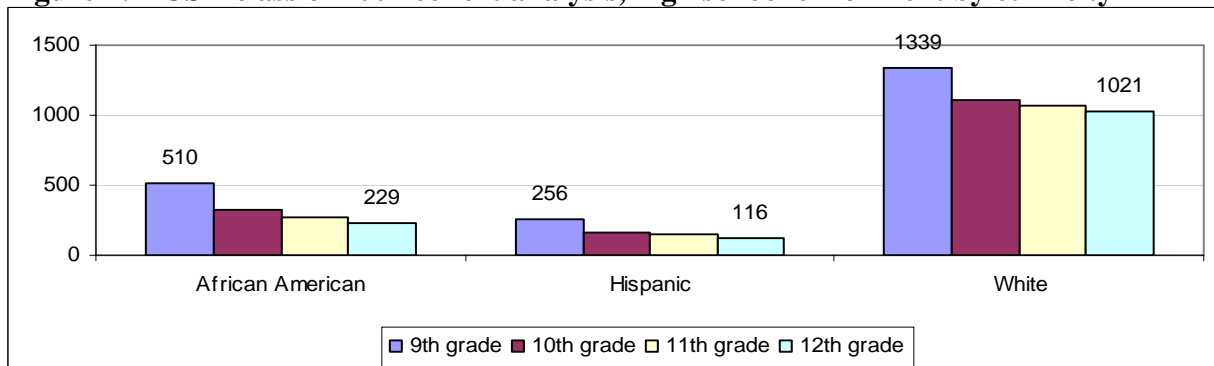


Table 2: Public school enrollment by race/ethnicity and grade, 2005-06

Racine	PK	K5	1	2	3	4	5	6	7	8	9	10	11	12	Total
Asian	13	32	16	35	23	32	33	25	17	18	24	24	26	21	339
Black	189	423	380	380	403	416	390	449	434	442	410	398	418	425	5,557
Hispanic	154	412	333	351	338	289	270	247	248	252	248	239	229	239	3,849
Indian	2	7	3	8	4	6	4	3	7	7	3	6	5	11	76
White	275	728	679	776	765	761	761	708	775	847	1,021	1,059	997	1,120	11,272
Total	633	1,602	1,411	1,550	1,533	1,504	1,458	1,432	1,481	1,566	1,706	1,726	1,675	1,816	21,093
Kenosha	PK	K5	1	2	3	4	5	6	7	8	9	10	11	12	Total
Asian	8	33	19	31	23	34	24	29	26	27	32	40	28	25	379
Black	173	283	246	253	279	250	274	250	243	249	334	194	210	109	3,347
Hispanic	264	334	351	293	258	274	276	273	257	251	309	231	198	134	3,703
Indian	1	4	4	4	2	8	6	9	7	6	15	3	9	4	82
White	394	998	1,073	1,002	926	1,012	1,005	1,075	1,048	1,146	1,386	1,276	1,260	1,019	14,620
Total	840	1,652	1,693	1,583	1,488	1,578	1,585	1,636	1,581	1,679	2,076	1,744	1,705	1,291	22,131
Wisconsin	PK	K5	1	2	3	4	5	6	7	8	9	10	11	12	Total
Asian	1,149	2,188	2,172	2,054	2,132	2,255	2,205	2,247	2,320	2,281	2,639	2,603	2,439	2,420	31,104
Black	5,229	6,300	6,555	6,538	6,295	6,482	6,566	6,899	7,001	7,235	8,911	6,839	5,864	4,892	91,606
Hispanic	3,490	5,254	5,151	4,878	4,646	4,533	4,400	4,081	4,078	3,979	4,556	3,619	3,355	2,992	59,012
Indian	362	851	862	835	805	872	828	946	1,016	1,015	1,280	1,029	1,007	984	12,692
White	20,988	45,789	44,853	44,673	44,786	45,842	46,305	48,564	50,738	52,475	59,288	59,319	58,763	58,377	680,760
Total	31,218	60,382	59,593	58,978	58,664	59,984	60,304	62,737	65,153	66,985	76,674	73,409	71,428	69,665	875,174

Beyond public schools, students within Racine city limits have a variety of options to obtaining a high school diploma. Private schools, charter schools, and home schools constitute a large portion of the enrollment in Racine schools. Over 29.9%, or 5,971 students, in Racine did not attend traditional public schools. RUSD had the highest percentage of students who were home schooled among peer school districts. The district ranked second in both private school and charter school enrollment. Since 2001-2002, private school enrollment in Racine has declined by 90 to 100 students each year, while charter enrollment has stayed mostly stable and the number of home schoolers has grown slightly. However, each schooling option's share of Racine's students has not changed dramatically in the past five years.

Table 3: Educational options among peer districts, 2005-06

	Private school enrollment	% of public enrollment	Rank	Charter school enrollment	% of public enrollment	Rank	Home school enrollment	% of public enrollment	Rank
Madison	4,289	17.5%	6	323	1.3%	7	419	1.71%	8
Kenosha	3,180	14.4%	8	618	2.8%	5	471	2.13%	3
Racine	4,262	20.1%	2	1,196	5.6%	2	513	2.42%	1
21st Century Charter School				385	1.8%				
Green Bay	4,080	20.1%	3	0	0.0%	10	281	1.38%	10
Appleton	3,419	22.5%	1	1,412	9.3%	1	241	1.58%	9
Waukesha	2,634	19.4%	4	321	2.4%	6	260	1.91%	6
Eau Claire	1,578	14.6%	7	371	3.4%	3	251	2.32%	2
Janesville	1,402	13.2%	10	113	1.1%	9	210	1.98%	5
Oshkosh	1,417	13.9%	9	339	3.3%	4	207	2.02%	4
Sheboygan	1,863	18.1%	5	130	1.3%	8	184	1.79%	7
Milwaukee	27,477	29.7%		17,098	18.5%		826	0.89%	
Non-MPS Charters				4,117	4.5%				
Wisconsin	135,033	15.5%		27,518	3.1%		20,871	2.40%	

Table 4: Special education enrollment, 2005-06

Enrollment	Special education			
	Age 3-21	Age 3-5	Age 3-21 as % of total enrollment	Rank
Madison	4,506	385	18.4%	2
Kenosha	3,086	479	13.9%	7
Racine	3,820	623	18.0%	3
Green Bay	3,834	382	18.9%	1
Appleton	2,091	257	13.7%	8
Waukesha	1,820	301	13.4%	10
Eau Claire	1,469	185	13.6%	9
Janesville	1,703	175	16.1%	6
Oshkosh	1,685	202	16.5%	5
Sheboygan	1,733	250	16.9%	4
Milwaukee	16,458	1,819	17.8%	
State of Wisconsin	129,875	16,066	14.8%	

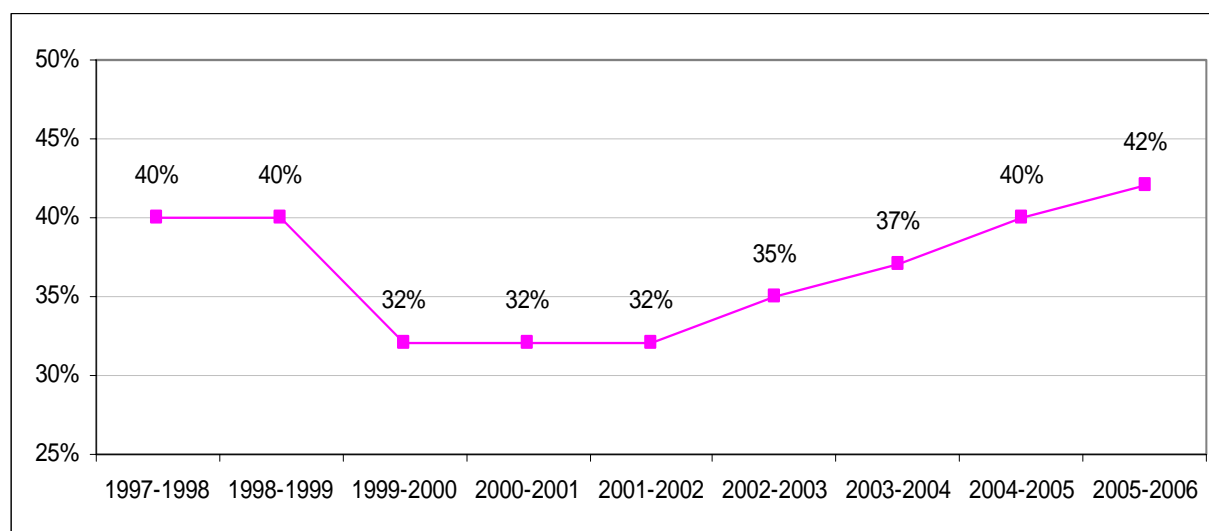
RUSD ranked third in the percentage of students - 3-21 years old - receiving special education, behind only Green Bay and Madison. The 18% of RUSD students who received special education in 2005-06 was slightly higher than last year's percentage of 17.8%. RUSD, Green Bay, and Madison had higher percentages than Milwaukee and the state. Of the 3,820 students who received special education in RUSD, 623 (16.3%) were 3-5 years old. This put RUSD second among peers, behind only Waukesha. Throughout the state, 14.8% of students received special education; of those 12.4% were 3-5 years old.

Demographic characteristics

From 2004-05 to 2005-06, the average income per tax return and the average income per pupil in RUSD both increased. Despite gains in affluence in the district, the number of students eligible for free and reduced price lunches also grew. Forty-two percent of RUSD students were eligible for free or reduced lunches, up from 40% a year earlier. For the fourth year in a row this measure has increased, reaching a nine-year high. Green Bay was the only RUSD peer district to have a higher percentage of students receiving free and reduced lunch.

Table 5: Community demographics among peer districts, 2005-06

Community demographics	Affluence							
	Free lunch eligible	Rank	Income per return	Rank	Income per pupil	Rank	Property value per pupil	Rank
Madison	38.0%	3	\$46,882	3	\$200,808	1	\$785,732	1
Kenosha	37.0%	4	\$43,135	8	\$100,627	10	\$368,638	8
Racine	42.0%	2	\$44,757	5	\$127,933	7	\$389,295	7
Green Bay	43.0%	1	\$44,207	6	\$143,465	4	\$393,980	6
Appleton	26.0%	9	\$46,445	4	\$131,202	6	\$396,292	5
Waukesha	21.0%	10	\$53,685	2	\$180,158	3	\$628,319	2
Eau Claire	30.0%	7	\$59,912	1	\$188,953	2	\$455,418	3
Janesville	31.0%	6	\$43,308	7	\$119,482	8	\$337,244	9
Oshkosh	29.0%	8	\$41,543	9	\$134,322	5	\$415,949	4
Sheboygan	37.0%	4	\$40,023	10	\$106,993	9	\$313,255	10
Milwaukee	72.0%		\$32,736		\$85,181		\$274,004	
Wisconsin	33.0%		\$45,083		\$126,380		\$28,927	

Figure 5: Trends in RUSD free lunch or reduced-price lunch eligibility, 1997-2005

Note: Racine's total enrollment declined from 1997-98 to 2000-01, likely effecting the number of students eligible for free or reduced lunch.

Three other key demographic measurements also were measured over a nine year period. The average income filed per return in Racine increased at a rate slower than that of the state over 1- and 9-year spans. The amount of income earned per pupil within the district also increased at a slower rate than that of the state over the same periods. The final demographic measurement, property value per pupil, increased at a rate slower than the state measurement over the 9-year period. However, property value per pupil increased at a rate greater than that of the state over the 1-year period. Slow growth in demographic measurements was responsible for RUSD's low ranking in those measurements during 2005.

Table 6: Trends in demographics, 1997-2005 and 2005-06

Behavior	Free lunch eligible		Income per return		Income per pupil		Property value per pupil	
	1-year change	9-year change	1-year change	9-year change	1-year change	9-year change	1-year change	9-year change
Madison	1.0%	7.0%	\$2,363	\$9,717	\$23,208	\$95,892	\$68,856	\$369,153
Kenosha	0.0%	4.0%	\$1,535	\$8,228	\$1,508	\$17,415	\$10,443	\$156,052
Racine	2.0%	2.0%	\$1,845	\$6,008	\$9,069	\$19,692	\$35,015	\$162,917
Green Bay	1.0%	6.0%	\$2,909	\$6,955	\$9,373	\$22,807	\$13,458	\$133,757
Appleton	1.0%	5.0%	\$2,899	\$9,839	\$12,543	\$78,550	-\$927	\$130,026
Waukesha	2.0%	7.0%	\$3,561	\$11,970	\$14,235	\$58,373	\$31,334	\$273,456
Eau Claire	1.0%	-6.0%	\$537	\$25,672	-\$497	\$102,943	\$11,174	\$220,466
Janesville	4.0%	6.0%	\$215	\$5,413	\$1,339	\$36,511	\$10,044	\$83,666
Oshkosh	1.0%	4.0%	\$1,886	\$8,015	\$8,756	\$41,385	\$27,870	\$170,127
Sheboygan	5.0%	8.0%	\$2,742	\$7,511	\$13,910	\$69,059	\$14,992	\$98,677
Milwaukee	-2.0%	-5.0%	\$967	\$5,112	\$7,339	\$15,835	\$39,421	\$122,220
Wisconsin	3.0%	0.0%	\$3,360	\$10,844	\$14,401	\$53,420	\$29,862	\$216,792

Finances

RUSD ranks fourth among peer districts in total operations revenue per pupil and is on par with the statewide average revenue per pupil. Madison, Waukesha, and Sheboygan had a higher total operations revenue per pupil than RUSD. The district's total operations revenue was \$10,163 per pupil for 2005-06 (Table 7). The majority, 67.6%, of this revenue came in the form of state aid, ranking RUSD second among peers. The district also ranked third in federal aid. RUSD ranked ninth among peers in property tax revenue, ahead of only Sheboygan.

Table 7: Revenue per pupil among peer districts, 2005-06

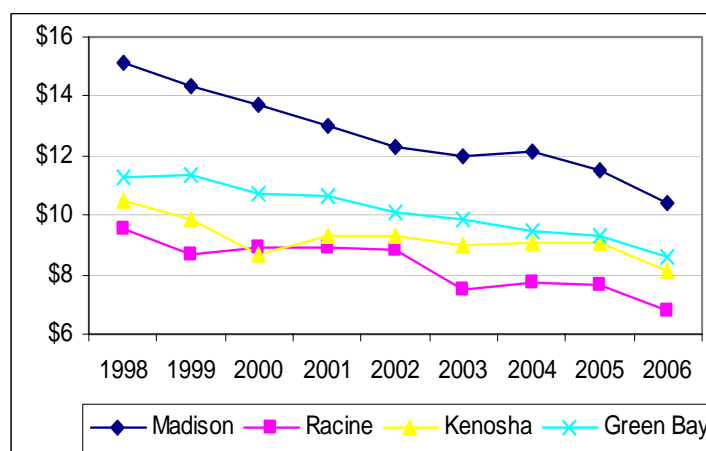
Finances	Property tax	% of total op. revenue	Rank	State aid	% of total op. revenue	Rank	Federal aid	% of total op. revenue	Rank	Operations revenue	Rank
Madison	\$7,401	62.7%	1	\$3,506	29.7%	10	\$493	4.2%	5	\$11,805	1
Kenosha	\$2,531	25.3%	6	\$6,566	65.7%	4	\$659	6.6%	2	\$9,992	7
Racine	\$2,426	23.9%	9	\$6,869	67.6%	2	\$657	6.5%	3	\$10,163	4
Green Bay	\$2,653	26.2%	5	\$6,485	64.0%	5	\$772	7.6%	1	\$10,129	5
Appleton	\$2,809	28.4%	4	\$6,053	61.3%	7	\$479	4.8%	6	\$9,882	8
Waukesha	\$4,717	45.5%	2	\$4,619	44.5%	9	\$367	3.5%	10	\$10,377	3
Eau Claire	\$3,640	36.0%	3	\$5,760	56.9%	8	\$424	4.2%	9	\$10,121	6
Janesville	\$2,360	24.6%	10	\$6,573	68.4%	3	\$430	4.5%	8	\$9,612	9
Oshkosh	\$2,451	26.4%	8	\$6,114	65.9%	6	\$462	5.0%	7	\$9,283	10
Sheboygan	\$2,515	23.8%	7	\$7,245	68.4%	1	\$504	4.8%	4	\$10,588	2
Milwaukee	\$1,943	17.6%		\$7,397	66.9%		\$1,558	14.1%		\$11,058	
Wisconsin	\$3,399	33.4%		\$5,798	57.0%		\$555	5.5%		\$10,167	

The low tax rate in the district prohibits RUSD from relying heavily on revenue generated by taxes. Last year, Racine ranked ninth in property tax levies among peer districts. The tax rate this year, \$6.76 per \$1,000 dollars in assessed property value, was the lowest tax rate among the ten peer districts and was the lowest tax rate within the district since 1998. The declining tax rate mirrored a trend toward decreasing tax levies at the state level and in comparable districts. One reason districts have been able to decrease their rates has been their property values have increased, allowing them to levy a similar amount with a lower tax rate. Thus, although Racine's tax rate is 11% lower this year, its tax levy per pupil is only 1.5% lower than last year.

Table 8: Property tax rates, 2006

Finances	Rate	Rank
Madison	\$10.43	1
Kenosha	\$8.16	7
Racine	\$6.76	10
Green Bay	\$8.57	4
Appleton	\$8.30	5
Waukesha	\$7.78	8
Eau Claire	\$9.90	3
Janesville	\$8.21	6
Oshkosh	\$7.25	9
Sheboygan	\$10.17	2
Milwaukee	\$8.94	
Wisconsin	\$8.62	

Figure 6: Trend in tax rates, 1998-2006



From 2005-06, RUSD saw minor changes in its aggregate revenue sources. Total operations revenue increased 4.7%. This was primarily the result of a 10.1% gain in state aid to the district. RUSD ranked fourth in growth in total operations revenue and in growth in state aid. Property tax revenue and federal aid in the district also decreased. RUSD ranked ninth in property tax percentage change and seventh in federal aid change among peers.

Table 9: Change in aggregate revenue among peer districts, 2004-05 to 2005-06

<u>Finances</u>	Property tax		State aid		Federal aid		Operations revenue	
	% change	Rank	% change	Rank	% change	Rank	% change	Rank
Madison	-1.3%	4	12.1%	2	-26.8%	10	0.9%	10
Kenosha	7.6%	1	1.6%	10	-6.8%	8	3.1%	6
Racine	-6.6%	9	10.1%	4	-4.7%	7	4.7%	4
Green Bay	-4.3%	6	6.8%	5	0.2%	5	2.4%	8
Appleton	5.1%	2	5.5%	8	7.6%	2	4.9%	2
Waukesha	-4.6%	7	13.0%	1	-2.1%	6	5.7%	1
Eau Claire	-1.1%	3	3.3%	9	-22.4%	9	1.6%	9
Janesville	-5.6%	8	5.8%	6	0.7%	4	2.9%	7
Oshkosh	-1.4%	5	5.5%	7	20.6%	1	4.6%	5
Sheboygan	-8.6%	10	11.0%	3	3.2%	3	4.8%	3
Milwaukee	1.6%		2.3%		4.9%		2.5%	
Wisconsin	-1.6%		6.3%		0.6%		3.4%	

RUSD property tax revenue increased at a slower rate than property tax revenue in the rest of the state. RUSD state aid increased at a rate greater than state aid to all districts in the state. The district ranked eighth in state aid growth, increasing 38.2%. Only Waukesha and Eau Claire had lower increases. Kenosha ranked first with an increase of 65.6%. RUSD ranked ninth among peers in the 9-year growth of federal aid.

Table 10: Change in aggregate revenue among peer districts, 1997-98 to 2005-06

<u>Finances</u>	Property tax		State aid		Federal aid	
	% change	Rank	% change	Rank	% change	Rank
Madison	16.3%	4	48.9%	6	133.9%	6
Kenosha	26.5%	1	65.6%	1	145.7%	5
Racine	8.0%	6	38.2%	8	91.4%	9
Green Bay	-8.7%	9	57.9%	2	132.2%	7
Appleton	15.8%	5	53.5%	4	396.1%	1
Waukesha	18.6%	3	37.5%	9	156.4%	3
Eau Claire	24.4%	2	18.5%	10	36.8%	10
Janesville	-13.6%	10	52.4%	5	125.1%	8
Oshkosh	2.1%	7	48.2%	7	147.7%	4
Sheboygan	-7.0%	8	56.4%	3	161.2%	2
Milwaukee	18.0%		26.5%		114.0%	
Wisconsin	14.4%		35.7%		121.8%	

On the spending side, RUSD had the sixth highest total operations spending among peer districts. Total spending per pupil was \$10,018 in 2005-06. This was down from a rank of third in 2004-05. RUSD ranked seventh among peers in instructional spending; sixth in pupil services, improving from ninth in 2004-05. RUSD spent \$438 per pupil on transportation, the highest among peers.

Table 11: Expenditures per pupil among peer districts, 2005-06

<u>Finances</u>	Operations spending per pupil								Other spending	
	Total	Instruction	Pupil services	Instructional staff services	General admin.	Building admin.	Transportation	All other	Debt services	Capital spending
Madison	\$11,748	\$6,933	\$748	\$613	\$87	\$685	\$389	\$2,292	\$256	\$0
Kenosha	\$9,923	\$6,492	\$582	\$541	\$51	\$519	\$265	\$1,473	\$491	\$0
Racine	\$10,018	\$6,469	\$530	\$446	\$81	\$504	\$438	\$1,550	\$212	\$140
Green Bay	\$10,237	\$6,585	\$626	\$612	\$87	\$543	\$302	\$1,483	\$855	\$6
Appleton	\$9,853	\$6,505	\$485	\$414	\$66	\$494	\$180	\$1,708	\$1,688	\$988
Waukesha	\$10,218	\$6,494	\$524	\$353	\$67	\$565	\$436	\$1,780	\$270	\$79
Eau Claire	\$10,356	\$6,275	\$396	\$717	\$110	\$545	\$376	\$1,937	\$922	\$12
Janesville	\$9,526	\$6,067	\$605	\$434	\$76	\$416	\$181	\$1,747	\$416	\$268
Oshkosh	\$9,399	\$6,248	\$452	\$398	\$51	\$446	\$228	\$1,576	\$941	\$12
Sheboygan	\$10,738	\$7,418	\$548	\$407	\$136	\$550	\$228	\$1,451	\$435	\$2,942
Milwaukee	\$10,406	\$6,225	\$533	\$716	\$236	\$630	\$572	\$1,493	\$326	\$100
Wisconsin	\$9,914	\$6,110	\$463	\$523	\$197	\$519	\$425	\$1,677		

Table 12: Peer district expenditure rankings, 2005-06

<u>Finances</u>	Operations spending per pupil rankings							
	Total	Instruction	Pupil services	Instructional staff services	Building admin	Transportation	All other	
Madison	1	2	1	2	1	3	1	
Kenosha	7	6	4	4	6	6	9	
Racine	6	7	6	5	7	1	7	
Green Bay	4	3	2	3	5	5	8	
Appleton	8	4	8	7	8	10	5	
Waukesha	5	5	7	10	2	2	3	
Eau Claire	3	8	10	1	4	4	2	
Janesville	9	10	3	6	10	9	4	
Oshkosh	10	9	9	9	9	8	6	
Sheboygan	2	1	5	8	3	7	10	

RUSD per pupil spending showed little change during 2005-2006. Racine ranked seventh among peer districts in total operations spending increases. The district had a 2.8% total increase in spending. The transportation, general administration, and instruction categories all increased. RUSD decreased its spending on pupil services, instructional staff services, and building administration (Table 13). The total operations spending increased 2.8%, slightly below the state average increase in total spending.

Table 13: Change in aggregate spending, 2004-05 to 2005-06

<i>Finances</i>	Operations		Instruction		Pupil services		Instructional staff services		General admin.		Building admin.		Transportation	
	%		%		%		%		%		%		%	
	change	Rank	change	Rank	change	Rank	change	Rank	change	Rank	change	Rank	change	Rank
Madison	0.9%	10	0.3%	10	-1.8%	9	-13.1%	9	6.0%	5	9.0%	2	12.1%	2
Kenosha	3.2%	5	3.3%	7	53.7%	1	29.5%	1	-24.8%	10	5.6%	4	-32.0%	10
Racine	2.8%	7	1.6%	9	-9.4%	10	-17.7%	10	68.6%	1	-3.5%	10	60.6%	1
Green Bay	2.8%	6	4.1%	6	2.9%	6	-6.1%	8	6.8%	4	10.4%	1	11.0%	3
Appleton	4.5%	3	8.1%	1	2.1%	7	3.0%	4	-24.6%	9	3.9%	6	0.8%	6
Waukesha	5.6%	1	4.2%	5	0.3%	8	1.3%	5	-9.7%	8	4.3%	5	10.2%	4
Eau Claire	3.7%	4	7.5%	3	3.7%	4	3.9%	3	50.0%	2	2.7%	8	-14.5%	9
Janesville	2.7%	8	3.3%	8	5.5%	3	0.5%	6	-1.7%	6	3.6%	7	-0.4%	7
Oshkosh	4.9%	2	4.6%	4	9.0%	2	10.6%	2	38.6%	3	2.4%	9	-2.5%	8
Sheboygan	2.6%	9	7.9%	2	3.6%	5	-5.1%	7	-9.0%	7	6.4%	3	7.1%	5
Milwaukee	0.1%		-1.8%		4.6%		4.5%		15.7%		0.9%		-2.4%	
Wisconsin	2.9%		2.5%		3.0%		2.2%		4.0%		2.7%		4.0%	

From 1998 to 2006, RUSD spending increased at a rate faster than the state in every expenditure category, except transportation. RUSD had the second highest increase (41.3%) in spending on administration over the 9-year time period. The district also had the fourth highest spending increases in instructional staff services and total operations spending.

Table 14: Change in aggregate spending, 1997-98 to 2005-06

<i>Finances</i>	Operations		Instruction		Pupil services		Instructional staff services		General admin.		Building admin.		Transportation	
	%		%		%		%		%		%		%	
	change	Rank	change	Rank	change	Rank	change	Rank	change	Rank	change	Rank	change	Rank
Madison	18.1%	6	25.7%	10	82.7%	4	7.1%	10	13.3%	8	51.9%	3	61.9%	3
Kenosha	24.5%	2	75.0%	1	83.1%	3	31.5%	8	10.1%	9	61.2%	1	65.3%	2
Racine	22.6%	4	36.1%	6	65.9%	8	50.5%	4	41.3%	2	44.7%	5	27.1%	6
Green Bay	16.7%	8	49.1%	4	104.6%	1	101.3%	1	44.9%	1	60.6%	2	66.6%	1
Appleton	31.8%	1	56.5%	3	66.7%	7	22.3%	9	26.3%	4	43.7%	7	54.9%	4
Waukesha	15.3%	9	36.9%	5	69.9%	6	44.5%	5	-8.4%	10	42.3%	9	49.7%	5
Eau Claire	19.4%	5	29.0%	9	45.8%	10	53.0%	3	24.6%	5	34.3%	10	16.8%	9
Janesville	1.1%	10	33.2%	8	96.5%	2	32.3%	7	19.5%	7	44.6%	6	24.3%	7
Oshkosh	17.9%	7	33.5%	7	75.0%	5	53.1%	2	20.6%	6	47.2%	4	8.5%	10
Sheboygan	22.7%	3	60.1%	2	64.0%	9	34.4%	6	29.5%	3	43.3%	8	18.8%	8
Milwaukee	18.3%		20.0%		74.8%		76.2%		57.7%		25.2%		3.8%	
Wisconsin	12.3%		32.3%		58.1%		41.7%		30.8%		37.2%		29.9%	

RUSD had the second highest per pupil spending on special education. It spent \$2,251 per pupil on special education with the majority going to the cost of instruction. RUSD also ranked second in the amount spent per pupil on special education instruction. Only Madison spent more on special education per pupil.

Special education spending amounted to 22.5% of total spending in the district. Of the transportation budget, 44.5 % went to special education transportation. Twenty-seven percent of RUSD’s instructional spending was for special education instruction.

Table 15: Special education spending per pupil among peer districts, 2005-06

Finances	Special education spending				
	Total	Instruction	Pupil services	Instructional staff services	Transportation
Madison	\$2,648	\$1,936	\$467	\$86	\$146
Kenosha	\$1,648	\$1,313	\$202	\$39	\$92
Racine	\$2,251	\$1,755	\$214	\$78	\$195
Green Bay	\$2,062	\$1,602	\$229	\$91	\$112
Appleton	\$1,516	\$1,164	\$212	\$57	\$66
Waukesha	\$1,907	\$1,369	\$220	\$35	\$205
Eau Claire	\$1,511	\$1,225	\$168	\$82	\$6
Janesville	\$1,563	\$1,179	\$206	\$63	\$89
Oshkosh	\$1,709	\$1,343	\$211	\$43	\$94
Sheboygan	\$1,781	\$1,454	\$204	\$45	\$62

Figure 7: RUSD special education spending as a percent of total operations spending

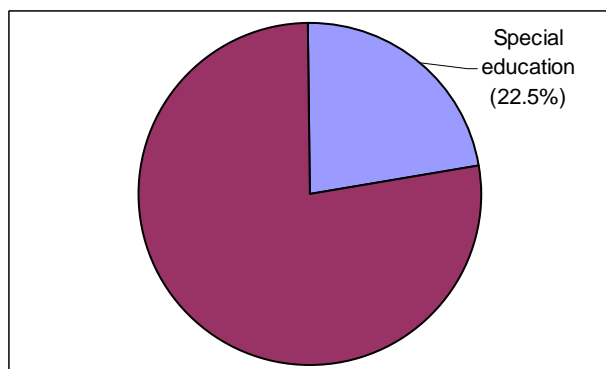


Figure 8: RUSD special education transportation as a percent of transportation spending

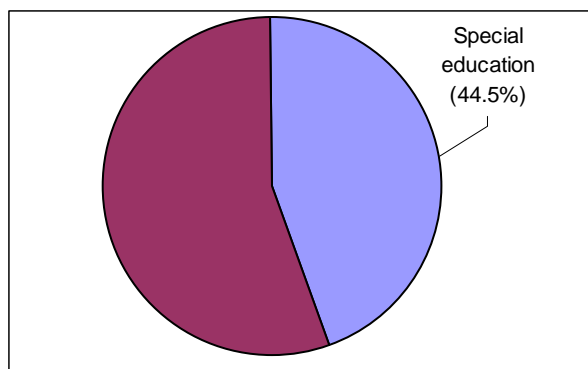


Figure 9: RUSD special education instruction as a percent of total instruction spending

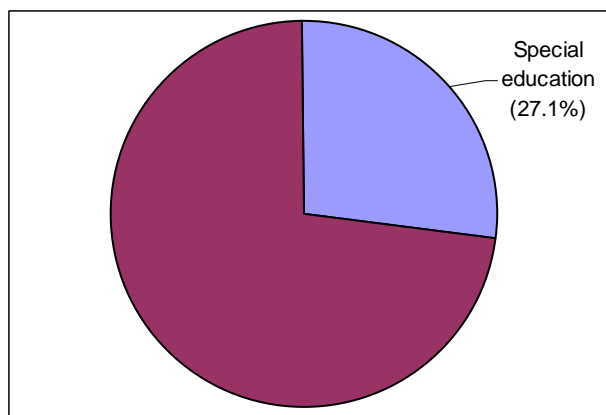
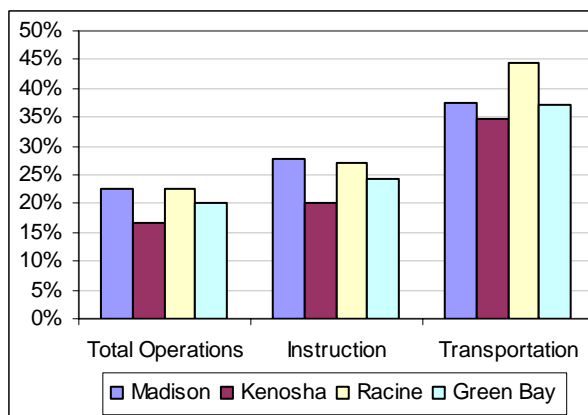


Figure 10: Special education spending as a percent of total spending, peer districts



Staffing

Staffing is the final of the three school performance inputs considered.

Class size is often used as a key indicator to student success, especially in elementary grades. To determine class size, pupil-to-staff ratios were used. RUSD had the highest pupil-teacher ratio among peer districts in 2005-06 at 16.2, an increase of 1.6 students per teacher from 2004-05. Although RUSD had the highest teacher-pupil ratio, RUSD had the lowest pupil-staff ratio at 7.9, slightly below the state average of 8.1 and one of only three peers below 10. RUSD was the only peer district with an increase in pupil-teacher ratio from 2004-05 to 2005-06.

Table 16: Pupil to staff ratios among peer districts, 2005-06

Staffing	Pupil to full-time staff ratios			
	Pupil/teacher	Rank	Pupil/employee	Rank
Madison	14.1	9	8.9	9
Kenosha	15.3	6	9.0	8
Racine	16.2	1	7.9	10
Green Bay	14.1	8	10.5	5
Appleton	15.8	3	10.0	7
Waukesha	15.9	2	11.3	1
Eau Claire	15.4	4	10.7	4
Janesville	14.2	7	10.8	3
Oshkosh	15.3	5	11.2	2
Sheboygan	13.9	10	10.1	6
Milwaukee	18.0		9.0	
State of Wisconsin	15.4		8.1	

RUSD teachers were paid an average salary of \$46,534. Including benefits in 2005-06, the average total came to \$66,495. RUSD ranked seventh in both salary and total compensation among peers in 2005-06, up from its 9th and 10th rankings last year. Racine moved up in the rankings due to its 4% increase in salary and 15% increase in benefits. Janesville and Oshkosh were the only two districts with decreases in salary, while Green Bay, Appleton, and Janesville saw declines in total compensation. Teachers throughout the state had an average salary of \$46,394 in 2005-06.

RUSD teachers had an average of 12.3 years of experience in the district in 2005-06, up from 10.4 years in 2004-05, placing them third among peer districts in local teacher experience. RUSD was one of only four peer districts to have an increase in local teacher experience. Explanations may be that RUSD was ahead of other districts in teacher retirements and/or that other districts had high teacher retirements in 2005-06. RUSD teachers had 14 years of total teacher experience in 2005-06, ranking the district sixth among peers. It was one of three peer districts with an increase in overall teacher experience. Overall, teachers in the state had 12 years of local experience and 14.3 years of total experience.

Table 17: Average teacher compensation among peer districts, 2005-06

Staffing	Teacher compensation					
	Salary	Rank	Fringe	Rank	Total compensation	Rank
Madison	\$48,999	4	\$20,374	5	\$69,374	4
Kenosha	\$48,505	5	*		*	
Racine	\$46,534	7	\$19,962	6	\$66,495	7
Green Bay	\$46,316	8	\$20,396	4	\$66,712	6
Appleton	\$50,777	3	\$17,453	9	\$68,230	5
Waukesha	\$54,043	1	\$26,353	1	\$80,395	1
Eau Claire	\$48,169	6	\$22,300	2	\$70,469	3
Janesville	\$44,144	10	\$19,130	8	\$63,275	9
Oshkosh	\$45,706	9	\$20,458	3	\$66,164	8
Sheboygan	\$52,442	2	\$19,834	7	\$72,276	2
Milwaukee	\$49,311		\$25,751		\$75,063	
State of Wisconsin	\$46,394		\$22,135		\$68,528	

* There was an error in reporting for fringe benefits at Kenosha School District.

Table 18: Average teacher experience among peer districts, 2005-06

Staffing	Teacher experience			
	Local experience	Rank	Total experience	Rank
Madison	11.7	4	14.2	4
Kenosha	10.7	9	12.0	10
Racine	12.3	3	14.0	6
Green Bay	11.4	7	14.1	5
Appleton	11.5	6	14.5	3
Waukesha	14.3	1	16.0	1
Eau Claire	12.8	2	15.8	2
Janesville	11.0	8	13.4	8
Oshkosh	10.3	10	12.2	9
Sheboygan	11.6	5	13.6	7
Milwaukee	8.7		9.1	
State of Wisconsin	12.0		14.3	

Student engagement

RUSD's attendance rate improved for the fourth year in a row. For 2004-05, it was 94.5%, ranking RUSD seventh among peers, up one position from 2003-04. RUSD and Kenosha were the only peer districts to have an improvement in attendance rate from 2003-04 to 2004-05. The state average attendance rate was 94.5%, the same as RUSD and down less than a percentage point from 2003-04.

The percentage of students who were habitually truant in 2004-05 improved dramatically. RUSD ranked 4th in truancy among peers in 2004-05, two spots better than in 2003-04. From 2003-04 to 2004-05, RUSD's percentage of truant students dropped from 18.1% to 9.7%. This was the fourth consecutive year that the district improved on this indicator (figure 12).

RUSD had the second highest dropout rate (3.4%) among peers in 2004-05. RUSD's 2003-04 dropout rate was 0.6%, which appeared to be a reporting error due to a change in reporting. The 2004-05 rate of 3.4% was 1.4 percentage points less than the 2002-03 rate of 4.8%. In 2004-05, only Green Bay had a higher dropout than RUSD. The state average was 1.7%.

Table 19: Attendance, truancy, and dropout rate among peer districts, 2004-05

Engagement	Attendance		Habitual truancy			High school dropouts		
	Rate	Rank	Truants	Percent	Rank	Dropouts	Percent	Rank
Madison	95.3%	3	1,777	7.2%	6	283	2.3%	4
Kenosha	92.7%	9	3,511	16.8%	3	234	2.3%	5
Racine	94.5%	7	2,009	9.7%	4	346	3.4%	2
Green Bay	92.2%	10	3,369	17.0%	2	379	3.8%	1
Appleton	95.3%	4	701	4.7%	7	40	0.5%	9
Waukesha	96.2%	1	128	1.0%	10	108	1.6%	6
Eau Claire	94.0%	8	771	7.5%	5	24	0.5%	10
Janesville	95.8%	2	1,817	17.5%	1	146	2.7%	3
Oshkosh	95.2%	5	387	3.8%	8	62	1.2%	7
Sheboygan	94.5%	6	292	3.0%	9	45	0.9%	8
Milwaukee	89.1%		70,715	46.9%		2,699	6.9%	
State of Wisconsin	94.5%		79,225	9.5%		7,326	1.7%	

Figure 11: Trends in attendance rates, 1996 to 2005

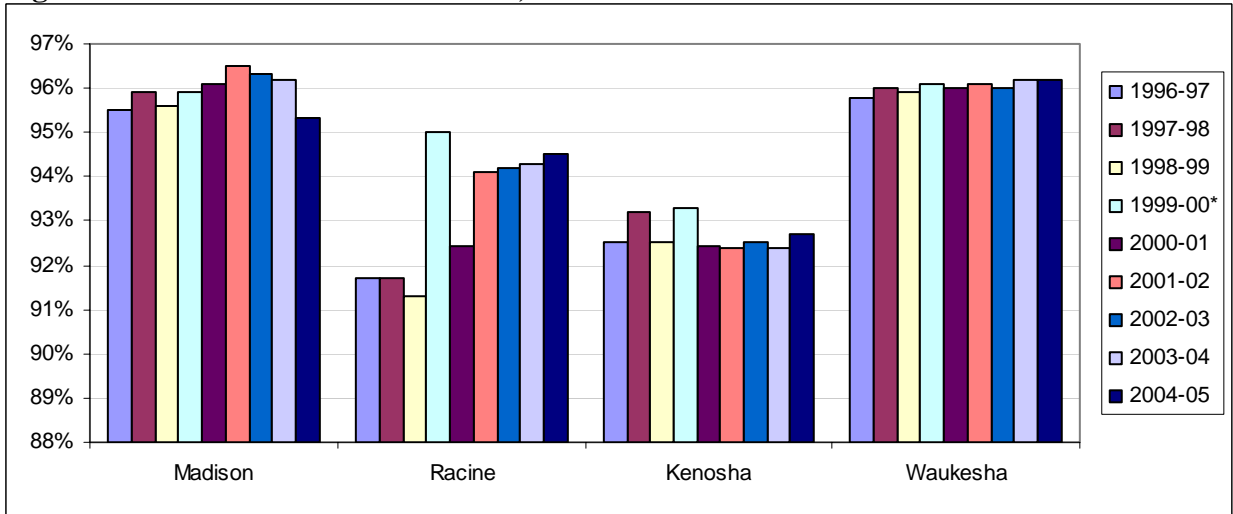


Figure 12: Trends in habitual truancy, 1996 to 2005

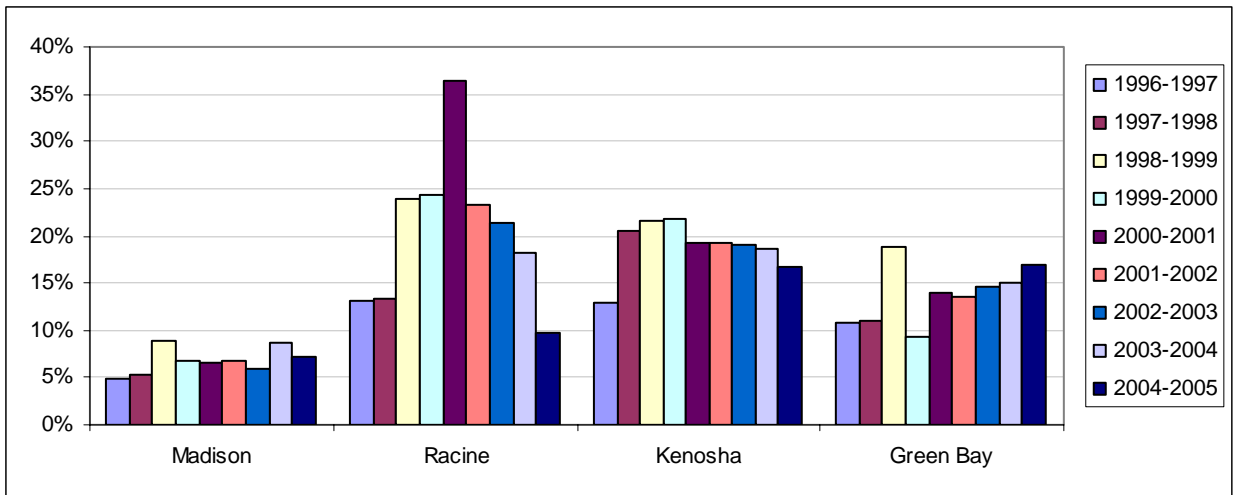
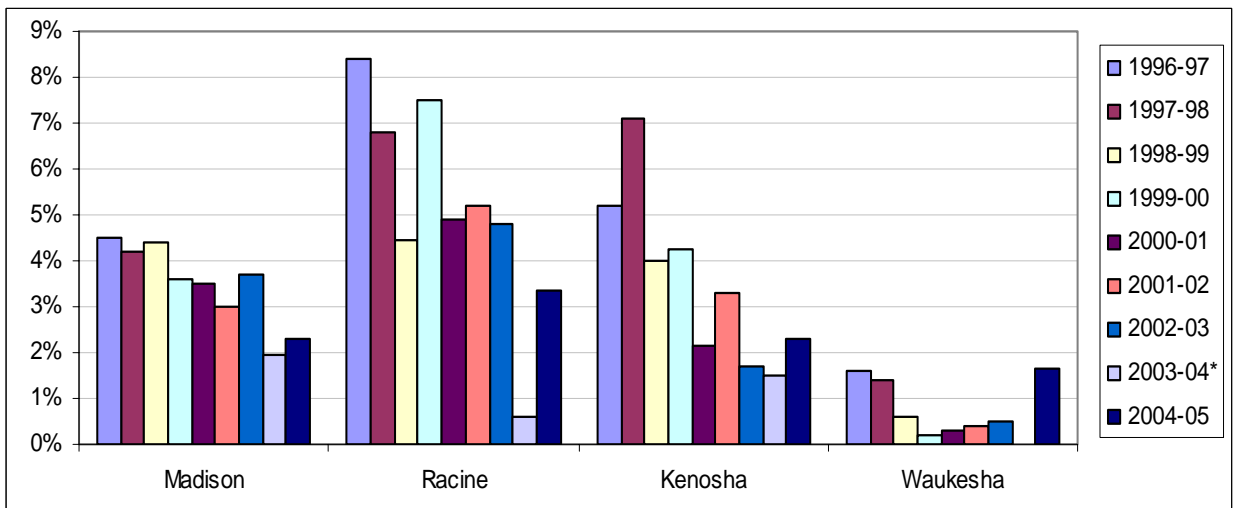


Figure 13: Trends in dropout rates, 1996 to 2005



RUSD ranked last in the number of students participating in academic and music-related extracurricular activities. It also ranked ninth out of ten districts based on participation in athletic extracurricular activities. These low rankings were due in part to a decline in participation in athletic and music extracurricular offerings during the 2004-2005 school year.

RUSD saw an increase in participation in academic extracurricular activities. Participation rates grew from 11.5% in 2003-2004 to 12.5% in 2004-05. It was the only peer district to have an academic participation rate below 20%.

It should be noted that the participation rate is an unduplicated count. It is based on the number of students participating in each activity category divided by the total enrollment. Extra-/co-curricular activities are reported in one of three categories: academic, athletic, and music. An individual student is counted only once in each activity category no matter how many groups or activities he/she participates in. For example, a student who participates in football, basketball, and golf is counted only once in the athletic extracurricular activity column.

Table 20: Participation in academic extracurricular activities among peer districts, 2004-05

Engagement	Average offerings	Academic participation	Academic participation rate	Rank
Madison	44	4,014	28.9%	2
Kenosha	28.3	4,096	35.6%	1
Racine	8.6	1,457	12.5%	10
Green Bay	11.6	2,556	23.0%	4
Appleton	7.1	3,353	39.2%	3
Waukesha	15	2,495	33.4%	5
Eau Claire	16	1,799	30.4%	8
Janesville	18.8	2,132	34.9%	7
Oshkosh	12.6	2,309	39.6%	6
Sheboygan	26.4	1,563	28.4%	9
Milwaukee	6.5	10,207	21.9%	
Wisconsin	10.3	166,879	34.7%	

Table 21: Participation in athletic and music activities among peer districts, 2004-05

	Average offerings	Athletic participation	Athletic participation	Rank	Average offerings	Music participation	Music participation	Rank
Madison	28.5	3028	21.8%	10	3.5	1165	9.1%	9
Kenosha	14.7	3893	33.9%	6	12.8	3221	28.0%	3
Racine	15.6	3032	26.0%	9	3.8	1012	8.8%	10
Green Bay	10.6	3364	30.3%	7	5.1	1903	17.2%	8
Appleton	7.4	3444	40.3%	3	4.2	2509	29.3%	2
Waukesha	8.2	3830	51.3%	1	14.6	2739	36.7%	1
Eau Claire	16	1719	29.1%	8	3.6	1350	22.8%	4
Janesville	29.6	2646	43.3%	2	8.6	1154	18.9%	7
Oshkosh	14.7	2250	38.6%	4	5	1191	20.4%	6
Sheboygan	25.8	2065	37.5%	5	14.6	1192	21.6%	5
Milwaukee	7.1	13128	28.2%		2.7	4125	8.8%	
Wisconsin	12	214370	44.5%		4.7	109731	22.8%	

In comparison to peer districts, RUSD had the highest suspension and expulsion rates. For 2004-05, 13.1% of students were suspended and 1.0% of students were expelled. Kenosha had the second highest suspension rate, 12.1%. Janesville had the second highest expulsion rate, 0.4%.

From 2003-04 to 2004-05, RUSD's suspension rate increased 1.1 percentage points and its expulsion rate increased 0.6 percentage points. For the second year in a row, both measures continued to increase.

RUSD's high school completion rate decreased 4.5 percentage points from 2003-04 to 2004-05. The district continued to rank last among peers in high school completion. All but three of the 10 peer districts had a decrease in their high school completion rate from 2003-04 to 2004-05. Appleton, Sheboygan, and Kenosha were the only districts with increases. Three districts, Green Bay, Madison, and Waukesha, had larger decreases in their high school completion rate than RUSD.

Table 22: Suspensions and expulsions among peer districts, 2004-05

<u>Behavior</u>	Suspensions			Expulsions		
	Students	Percent	Rank	Students	Percent	Rank
Madison	2089	8.4%	3	47	0.2%	4
Kenosha	2,621	12.1%	2	39	0.2%	4
Racine	2,788	13.1%	1	202	1.0%	1
Green Bay	1,543	7.6%	4	9	0.0%	9
Appleton	672	4.5%	6	15	0.1%	6
Waukesha	489	3.7%	8	39	0.3%	3
Eau Claire	416	4.0%	7	6	0.1%	6
Janesville	688	6.5%	5	45	0.4%	2
Oshkosh	350	3.4%	10	8	0.1%	6
Sheboygan	355	3.5%	9	0	0.0%	9
Milwaukee	22,196	23.7%		309	0.3%	
Wisconsin	59,901	6.5%		1,634	0.2%	

Table 23: High school completion rates among peer districts, 2005

<u>Graduation rates</u>	Total expected to complete high school	Regular diplomas	% regular diplomas	Rank
Madison	2,227	1,789	80.3%	8
Kenosha	1,620	1,479	91.3%	3
Racine	1,665	1,243	74.7%	10
Green Bay	1,647	1,283	77.9%	9
Appleton	1,213	1,182	97.4%	1
Waukesha	1,066	973	91.3%	4
Eau Claire	916	855	93.3%	2
Janesville	950	787	82.8%	7
Oshkosh	866	725	83.7%	6
Sheboygan	826	749	90.7%	5
Milwaukee	6,541	3,915	59.9%	
State of Wisconsin	71,172	63,229	88.8%	

Student performance

The Wisconsin Knowledge and Concepts Exam (WKCE) exam is now administered annually to all 3rd, 4th, 5th, 6th, 7th, 8th, and 10th grade students. The 2005-06 school year was the first year that the WKCE was administered to students in 3rd, 5th, 6th, and 7th grades. In these grades, students are only tested in reading and math, but for the 4th, 8th, and 10th grade test students are tested in reading math, language arts, science, and social studies. The 3rd grade WKCE replaced the Wisconsin Reading and Concepts Test (WRCT), which is no longer administered. Historical comparison can only be made on the 4th, 8th and 10th grade tests due the change in exams and can only be made back to the 2002-03 school year because of changes in the exam.

RUSD ranked tenth among peers on the 3rd grade WKCE in both reading and math. Sixty-six percent of the 3rd graders at RUSD scored at or above proficient in reading in 2005-06. In Green Bay, 68% scored at or above proficient. These were the only two districts scoring below 70%. Throughout the state 79% of students scored at or above proficient in reading. At RUSD, 51% of 3rd graders scored at or above proficient, well below Kenosha's 68.7%, the ninth ranked peer district. The statewide percentage of students scoring at or above proficient in math was 70.5%.

Table 24: 3rd grade WKCE reading and math scores among peer districts, 2005-06

<u>Performance</u>	3rd grade scores									
	Reading					Math				
	Minimum	Basic	Proficient	Advanced	Rank	Minimum	Basic	Proficient	Advanced	Rank
Madison	4.7%	13.9%	31.1%	45.8%	7	17.0%	6.8%	27.9%	44.0%	4
Kenosha	3.5%	15.2%	37.5%	39.2%	8	17.2%	9.3%	39.3%	29.4%	9
Racine	6.2%	19.9%	38.1%	28.0%	10	29.0%	11.9%	34.8%	16.2%	10
Green Bay	4.7%	14.0%	37.7%	30.5%	9	12.9%	5.7%	37.1%	32.0%	8
Appleton	3.2%	11.9%	35.0%	46.8%	3	16.4%	11.4%	39.6%	29.9%	7
Waukesha	2.7%	10.6%	31.6%	50.1%	4	15.1%	8.8%	41.9%	29.4%	5
Eau Claire	2.4%	11.2%	35.1%	49.4%	1	15.9%	11.0%	41.3%	29.8%	6
Janesville	3.3%	13.7%	38.9%	40.2%	5	10.1%	8.1%	43.1%	35.4%	2
Oshkosh	2.0%	13.1%	42.7%	39.2%	2	9.9%	6.9%	36.6%	43.9%	1
Sheboygan	2.5%	9.9%	37.6%	41.4%	6	9.4%	7.2%	36.0%	42.2%	3
Milwaukee	8.2%	25.1%	40.6%	18.6%		38.9%	12.9%	29.1%	12.1%	
Wisconsin	3.8%	13.3%	37.4%	41.7%		16.9%	9.2%	38.8%	31.7%	

Student performance

At RUSD, 4th grade WKCE scores declined in four out of the five content areas measured from 2004-05 to 2005-06. Seventy-two percent of 4th graders tested in reading scored at or above proficient in 2005-06, ranking RUSD last among peers. RUSD also ranked last among peers in math, with 57.4% of students scoring at or above proficient. The 4th grade reading scores at RUSD were down almost five percentage points from 2002-03. Math scores also dropped five percentage points.

Table 25: 4th grade WKCE reading and math scores among peer districts, 2005-06

Performance	4th grade test scores									
	Reading					Math				
	Minimum	Basic	Proficient	Advanced	Rank	Minimum	Basic	Proficient	Advanced	Rank
Madison	3.7%	12.7%	32.1%	44.9%	7	15.1%	8.4%	36.5%	34.0%	6
Kenosha	5.6%	13.4%	40.9%	38.8%	6	17.5%	12.7%	39.1%	27.5%	9
Racine	7.1%	17.2%	43.7%	28.6%	10	24.9%	13.7%	38.9%	18.6%	10
Green Bay	4.2%	12.6%	39.5%	36.0%	9	11.1%	7.8%	37.5%	35.6%	4
Appleton	3.0%	9.2%	37.6%	47.1%	2	12.4%	10.2%	39.4%	35.0%	3
Waukesha	2.6%	8.7%	36.5%	47.2%	3	15.8%	11.4%	43.7%	24.1%	8
Eau Claire	3.2%	9.9%	38.2%	48.0%	1	17.0%	13.0%	43.4%	25.9%	7
Janesville	3.4%	10.4%	39.3%	44.0%	4	15.4%	11.6%	40.8%	30.8%	5
Oshkosh	3.6%	12.8%	40.9%	40.4%	5	11.8%	9.1%	37.9%	38.9%	1
Sheboygan	3.9%	15.1%	37.4%	39.1%	8	12.1%	8.1%	37.5%	37.0%	2
Milwaukee	10.5%	25.3%	43.7%	16.3%		39.0%	14.3%	32.5%	10.6%	
Wisconsin	4.4%	11.7%	39.2%	41.7%		15.8%	10.1%	39.7%	31.6%	

Figure 14: 4th grade reading score trends, percent proficient or advanced

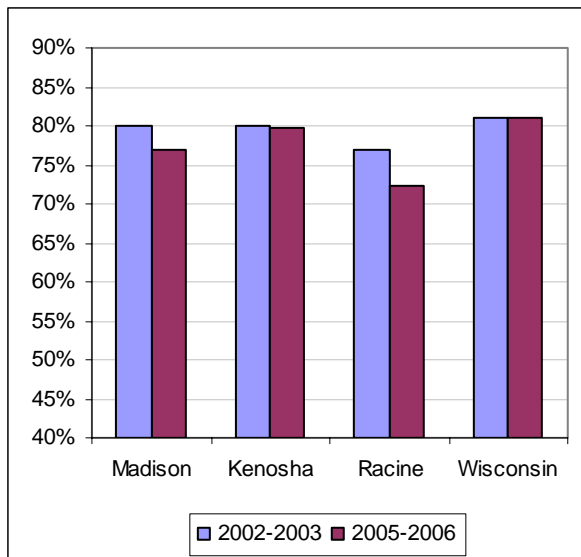
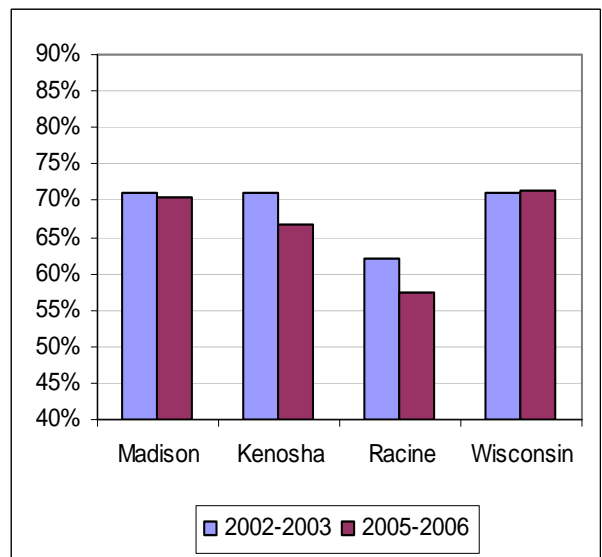


Figure 15: 4th grade math score trends, percent proficient or advanced



During the 2005-06 school year, 5th, 6th, and 7th grade students in Wisconsin began taking the WKCE test. The federal “No Child Left Behind Act” required that students be tested at these additional grades. RUSD ranked last among its peer districts in all three grade levels in both reading and math. At RUSD, 70% of 5th graders scored at or above proficient in reading, while 54% of 5th graders scored at or above proficient in math.

Sixth grade students’ scores closely mirrored scores of 5th graders in the district. On the WKCE reading exam, 70% of 6th graders scored at or above proficient. In math, 55% of 6th graders scored at or above proficient.

RUSD students in the 7th grade scored higher on WKCE tests than 5th and 6th graders. In reading scores, 72% of 7th graders had advanced scores. While math scores were substantially higher, only 68% of students scored at or above proficient. Although scores in the 7th grade were higher than scores in earlier grade levels, RUSD 7th graders scored below the state level.

Table 26: 5th grade WKCE reading and math scores among peer districts, 2005-06

Performance	5th grade test scores									
	Reading					Math				
	Minimum	Basic	Proficient	Advanced	Rank	Minimum	Basic	Proficient	Advanced	Rank
Madison	4.1%	9.8%	31.3%	48.5%	6	12.6%	9.7%	32.4%	39.4%	7
Kenosha	6.2%	12.9%	42.0%	37.6%	7	15.9%	11.5%	41.9%	27.8%	9
Racine	9.4%	17.7%	43.4%	26.7%	10	27.6%	15.7%	40.3%	13.7%	10
Green Bay	5.7%	13.5%	41.1%	34.1%	9	13.9%	10.1%	36.3%	35.3%	8
Appleton	2.6%	8.7%	34.9%	50.5%	4	12.1%	9.7%	44.5%	30.6%	3
Eau Claire	3.0%	7.4%	37.2%	49.6%	1	12.7%	10.9%	45.8%	27.8%	4
Waukesha	1.6%	9.0%	37.6%	48.6%	2	11.8%	12.6%	44.4%	28.8%	5
Janesville	2.7%	10.3%	41.8%	43.1%	5	13.7%	12.2%	41.5%	30.6%	6
Oshkosh	2.4%	9.5%	43.1%	42.9%	3	7.6%	8.5%	40.2%	41.7%	1
Sheboygan	4.3%	13.6%	39.4%	38.4%	8	7.8%	10.9%	37.0%	38.6%	2
Milwaukee	12.5%	23.1%	43.6%	17.1%		38.9%	17.9%	32.1%	7.6%	
Wisconsin	4.7%	11.0%	39.8%	41.9%		14.7%	11.3%	41.5%	29.9%	

Table 27: 6th grade WKCE reading and math scores among peer districts, 2005-06

<u>Performance</u>	6th grade test scores									
	<u>Reading</u>					<u>Math</u>				
	Minimum	Basic	Proficient	Advanced	Rank	Minimum	Basic	Proficient	Advanced	Rank
Madison	6.2%	10.1%	34.4%	44.5%	7	13.6%	10.2%	36.1%	33.3%	9
Kenosha	7.2%	11.3%	44.2%	36.0%	6	12.8%	13.7%	45.8%	25.9%	8
Racine	8.8%	17.5%	44.4%	25.7%	10	23.8%	17.6%	42.8%	12.0%	10
Green Bay	9.9%	13.9%	41.1%	32.8%	9	12.1%	10.1%	39.5%	35.2%	6
Appleton	3.2%	7.3%	36.3%	50.8%	2	8.1%	10.1%	43.9%	35.5%	3
Eau Claire	3.2%	8.6%	36.7%	50.0%	4	12.4%	10.5%	43.1%	32.6%	5
Waukesha	2.4%	7.0%	35.6%	51.3%	3	9.5%	9.9%	47.2%	30.5%	4
Janesville	6.2%	8.0%	42.0%	43.5%	5	14.4%	12.1%	45.8%	27.2%	7
Oshkosh	3.4%	7.8%	43.3%	44.0%	1	9.3%	9.9%	39.3%	40.5%	2
Sheboygan	4.6%	12.6%	43.4%	35.0%	8	6.8%	7.7%	38.2%	41.6%	1
Milwaukee	15.3%	23.7%	42.7%	14.2%		38.2%	20.4%	31.2%	6.1%	
Wisconsin	5.1%	10.2%	40.5%	41.9%		13.6%	12.0%	43.8%	28.2%	

Table 28: 7th grade WKCE reading and math scores among peer districts, 2005-06

<u>Performance</u>	7th grade test scores									
	<u>Reading</u>					<u>Math</u>				
	Minimum	Basic	Proficient	Advanced	Rank	Minimum	Basic	Proficient	Advanced	Rank
Madison	5.0%	9.1%	34.4%	46.6%	7	12.2%	9.6%	38.8%	33.0%	9
Kenosha	6.7%	8.9%	46.4%	36.9%	6	11.1%	14.4%	44.6%	28.8%	8
Racine	8.1%	15.2%	43.7%	28.2%	10	17.5%	16.7%	45.8%	15.0%	10
Green Bay	8.8%	12.0%	40.8%	35.2%	9	9.3%	11.3%	40.3%	34.7%	7
Appleton	4.8%	8.2%	40.5%	44.4%	4	10.0%	8.5%	46.8%	32.5%	2
Eau Claire	2.1%	7.4%	37.7%	49.9%	2	10.6%	10.0%	48.5%	28.1%	5
Waukesha	2.7%	7.5%	40.5%	47.5%	1	8.4%	11.6%	51.9%	26.2%	3
Janesville	6.9%	8.6%	41.3%	42.2%	5	11.8%	11.6%	50.9%	24.9%	6
Oshkosh	3.2%	8.2%	41.5%	45.6%	3	7.2%	10.3%	46.5%	34.5%	1
Sheboygan	5.8%	10.7%	41.7%	38.3%	8	7.9%	9.6%	42.6%	35.1%	4
Milwaukee	14.8%	21.9%	44.6%	14.1%		37.3%	21.6%	31.0%	5.4%	
Wisconsin	5.3%	9.5%	41.0%	41.8%		12.4%	12.4%	45.9%	26.9%	

This year, RUSD 8th graders ranked last among peers in both math and reading. In reading, 69.8% of 8th graders tested at or above proficient, making RUSD the only peer district below 70%. Green Bay was the next lowest, with 75.4% scoring at or above proficient. Fifty-seven percent of 8th graders tested scored at or above proficient in math, well below Janesville's 71.6%. Although RUSD ranked last among peers there was some improvement. For example, this was the second year in a row that eighth grade reading and math scores improved at RUSD.

Table 29: 8th grade WKCE reading and math scores among peer districts, 2005-06

Performance	8th grade test scores									
	Reading					Math				
	Minimum	Basic	Proficient	Advanced	Rank	Minimum	Basic	Proficient	Advanced	Rank
Madison	5.6%	7.4%	34.8%	47.4%	6	10.5%	11.5%	38.7%	33.4%	8
Kenosha	5.9%	10.7%	43.8%	37.9%	7	10.1%	13.7%	48.8%	25.3%	5
Racine	12.1%	14.5%	47.0%	22.8%	10	20.5%	18.4%	46.1%	10.7%	10
Green Bay	9.0%	11.9%	43.2%	32.2%	9	10.5%	12.1%	46.6%	26.4%	7
Appleton	3.6%	6.2%	38.0%	50.4%	3	7.0%	9.1%	50.6%	31.4%	1
Waukesha	3.6%	5.7%	39.6%	49.5%	1	6.9%	10.8%	52.3%	28.4%	3
Eau Claire	3.3%	7.0%	39.6%	48.8%	2	9.5%	15.4%	49.1%	24.8%	6
Janesville	6.1%	8.2%	43.0%	40.5%	5	11.5%	14.9%	49.0%	22.6%	9
Oshkosh	4.0%	8.6%	45.3%	41.1%	4	6.7%	11.4%	52.5%	28.4%	2
Sheboygan	6.6%	11.0%	44.5%	34.9%	8	6.6%	9.5%	51.0%	29.1%	4
Milwaukee	15.8%	20.8%	44.8%	12.7%		33.6%	23.4%	31.9%	5.3%	
Wisconsin	5.5%	8.5%	42.3%	41.2%		11.3%	13.1%	48.2%	24.9%	

Figure 16: 8th grade reading score trends, percent proficient or advanced, 2003 & 2006

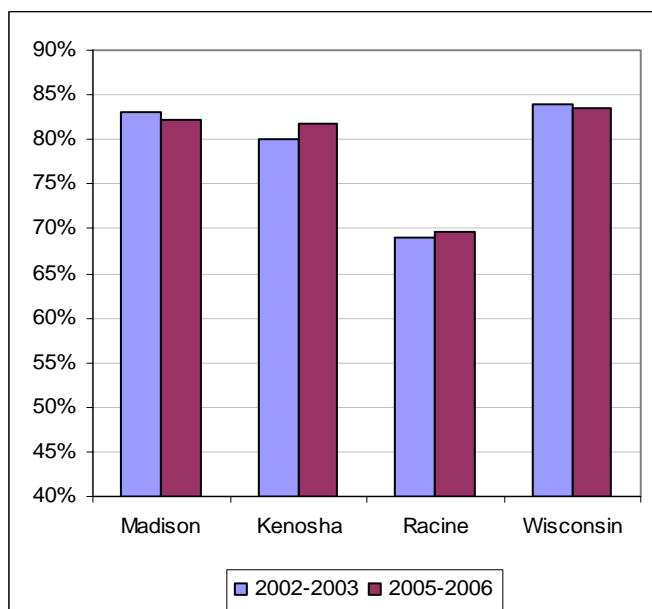
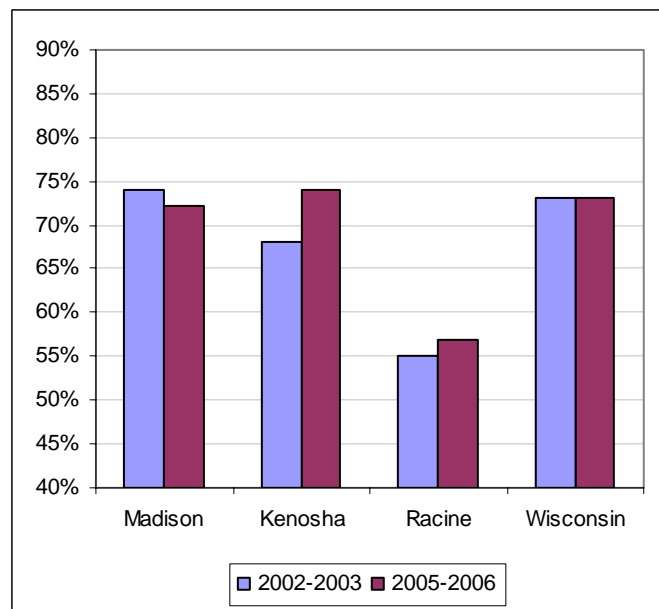


Figure 17: 8th grade math score trends, percent proficient or advanced, 2003 & 2006



Consistent with findings in the 4th and 8th grades, RUSD 10th graders ranked last on the WKCE. From 2004-05 to 2005-06, RUSD math scores improved while reading scores declined. In reading, 56.1% of 10th graders tested at or above proficient which was more 10 percentage points behind the next highest peer district, Green Bay. RUSD's percentage of students scoring at or above proficient in math was 53.5% in 2005-06, again almost 10 percentage points behind the next district, Kenosha.

Table 30: 10th grade WKCE reading and math scores among peer districts, 2005-06

Performance	10th grade test scores									
	Reading					Math				
	Minimum	Basic	Proficient	Advanced	Rank	Minimum	Basic	Proficient	Advanced	Rank
Madison	10.0%	11.5%	24.8%	47.6%	5	14.9%	8.7%	31.3%	37.8%	6
Kenosha	10.0%	14.9%	34.7%	36.4%	7	17.7%	17.0%	46.0%	17.1%	9
Racine	20.7%	18.9%	30.9%	25.1%	10	26.8%	14.9%	38.7%	14.7%	10
Green Bay	10.6%	18.5%	31.7%	35.2%	9	14.5%	13.3%	44.2%	23.9%	7
Appleton	6.0%	13.6%	32.7%	44.8%	2	9.2%	10.3%	45.9%	31.6%	1
Waukesha	7.9%	13.9%	33.5%	42.9%	3	11.9%	13.5%	49.3%	23.4%	5
Eau Claire	6.0%	12.8%	30.3%	49.6%	1	11.3%	10.0%	47.9%	29.3%	2
Janesville	8.8%	16.9%	31.3%	41.0%	6	16.5%	15.7%	43.3%	22.2%	8
Oshkosh	8.1%	13.4%	33.5%	42.7%	4	12.8%	11.0%	49.2%	24.5%	4
Sheboygan	6.3%	17.2%	36.9%	34.1%	8	11.0%	9.3%	46.8%	27.2%	3
Milwaukee	26.8%	25.9%	26.4%	13.1%		41.5%	20.3%	26.2%	3.8%	
Wisconsin	8.9%	13.6%	31.9%	42.2%		13.6%	12.2%	45.1%	25.5%	

Figure 18: 10th grade reading score trends, percent proficient or advanced, 2003-2006

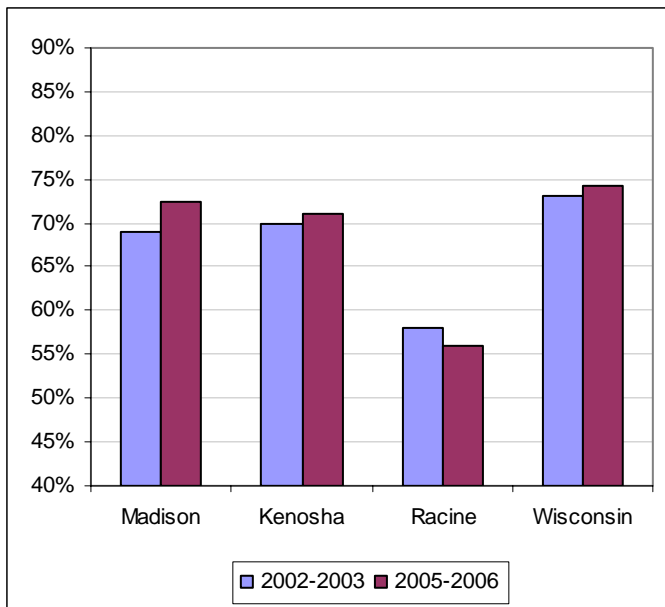
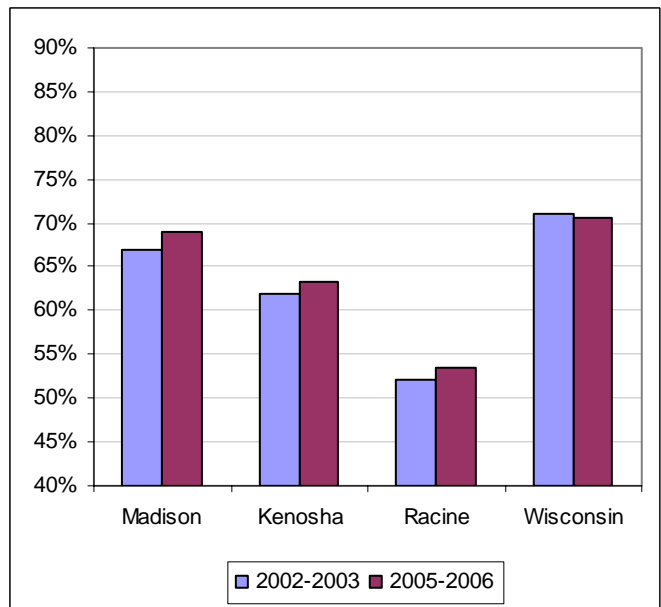


Figure 19: 10th grade math score trends, percent proficient or advanced, 2003-2006



RUSD's WKCE scores as a percent of state scores, by grade and subject, 1997-98 to 2005-06

Figure 20: 4th grade reading

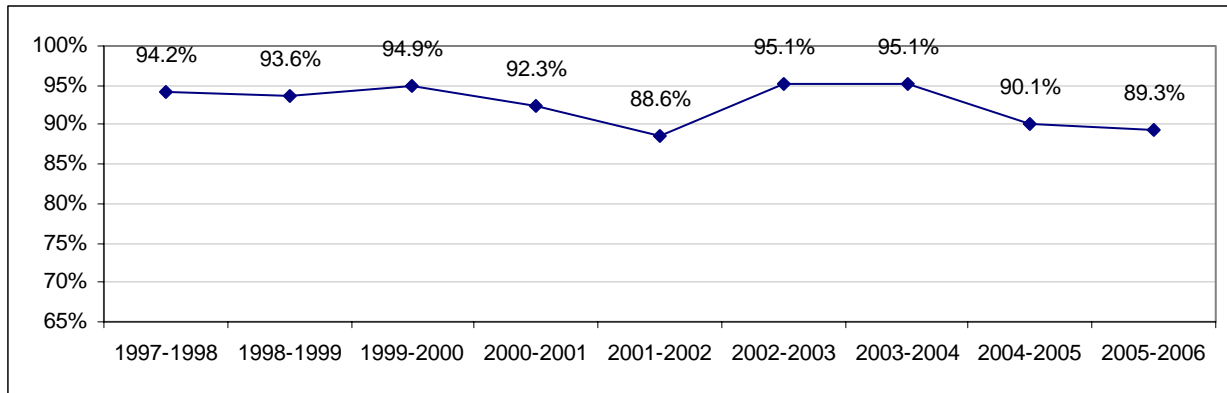


Figure 21: 4th grade language

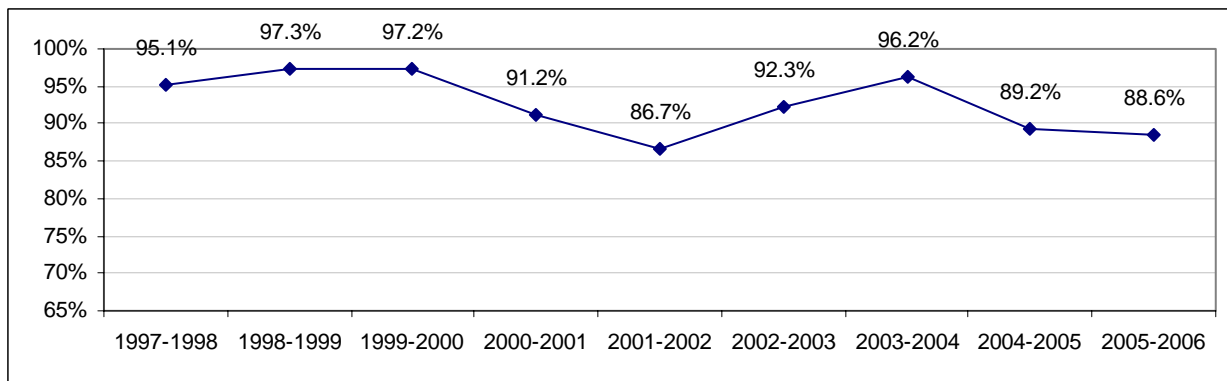


Figure 22: 4th grade math

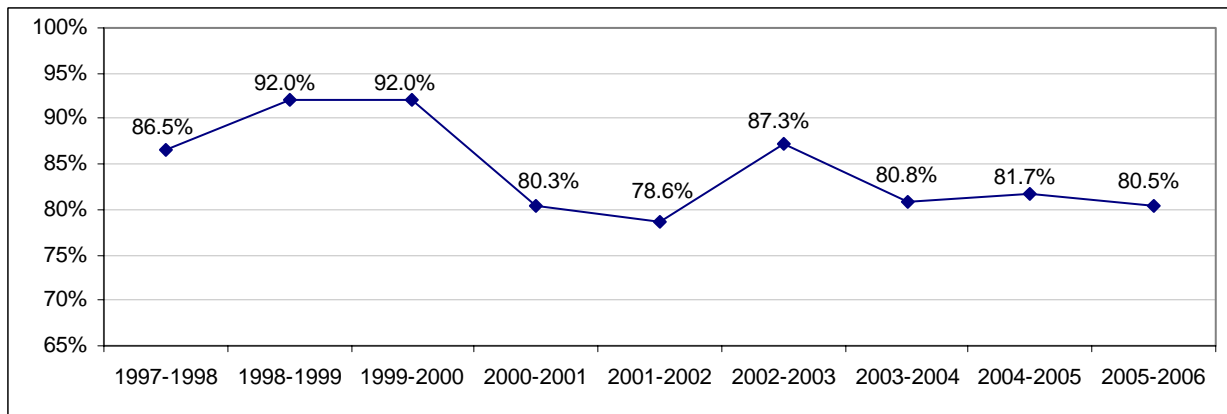


Figure 23: 4th grade science

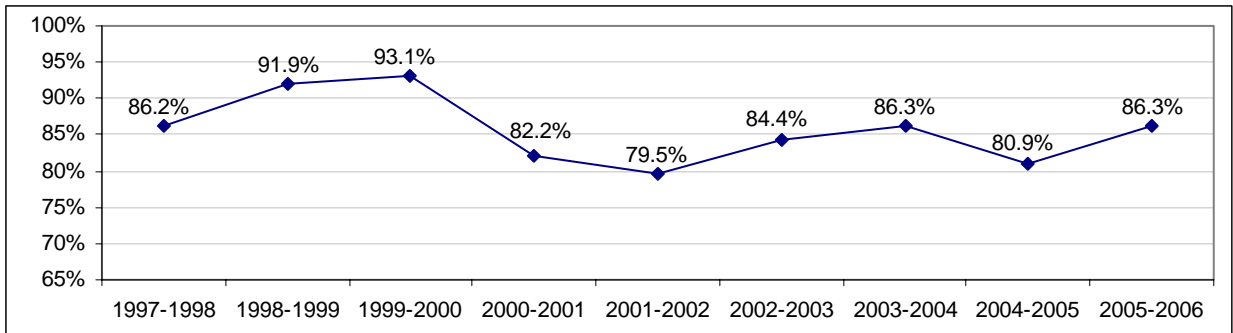


Figure 24: 4th grade social studies

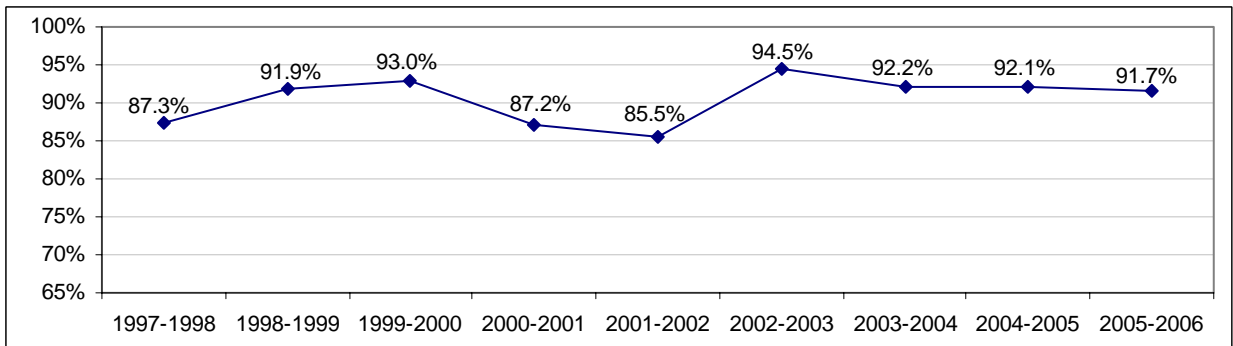


Figure 25: 8th grade reading

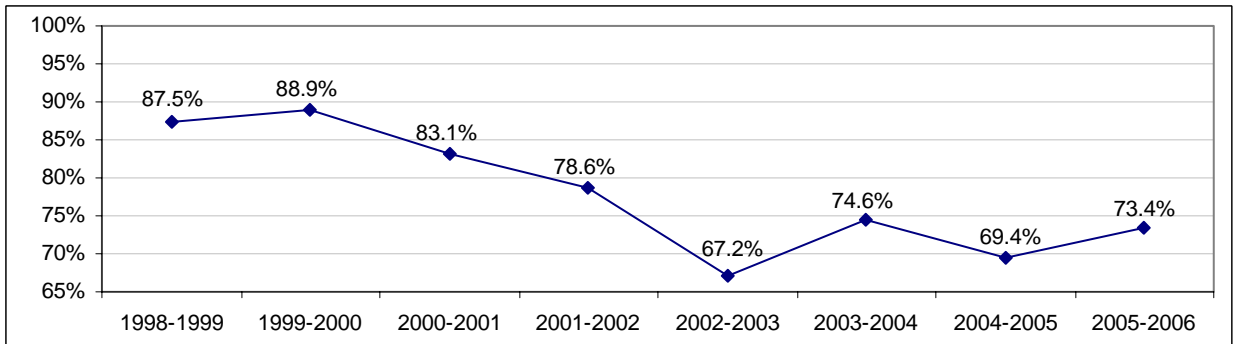


Figure 26: 8th grade math

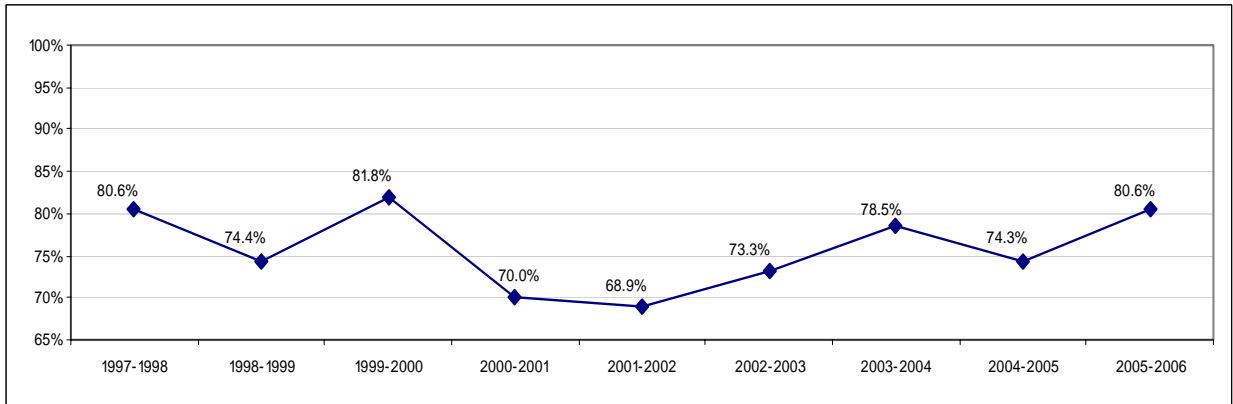


Figure 27: 8th grade science

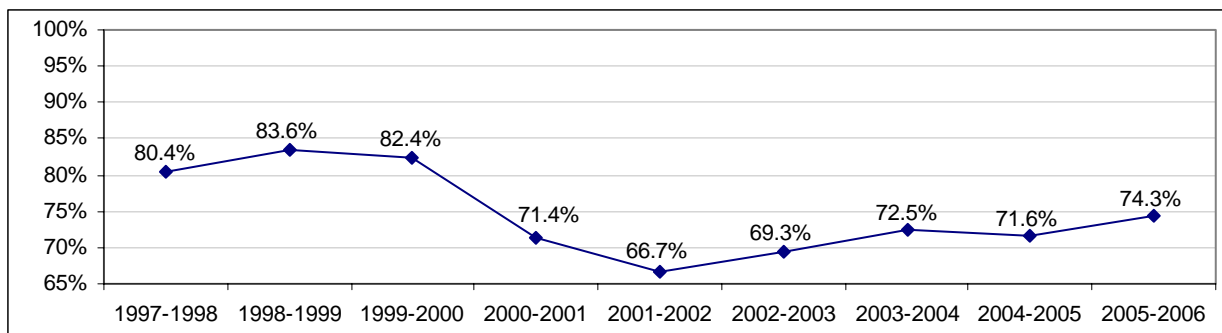


Figure 28: 8th grade social studies

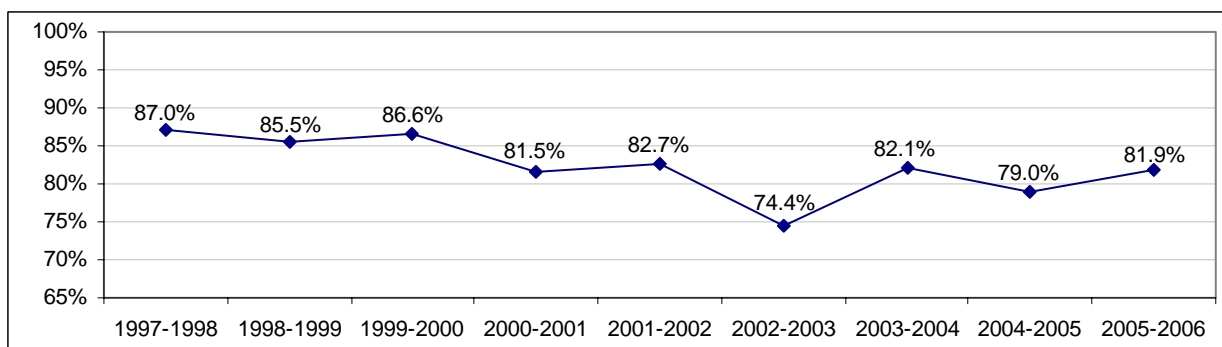


Figure 29: 10th grade reading

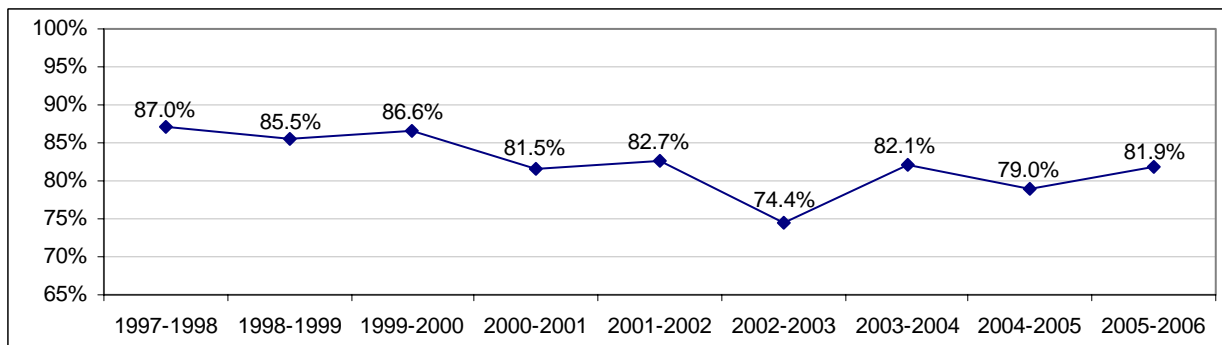


Figure 30: 10th grade language

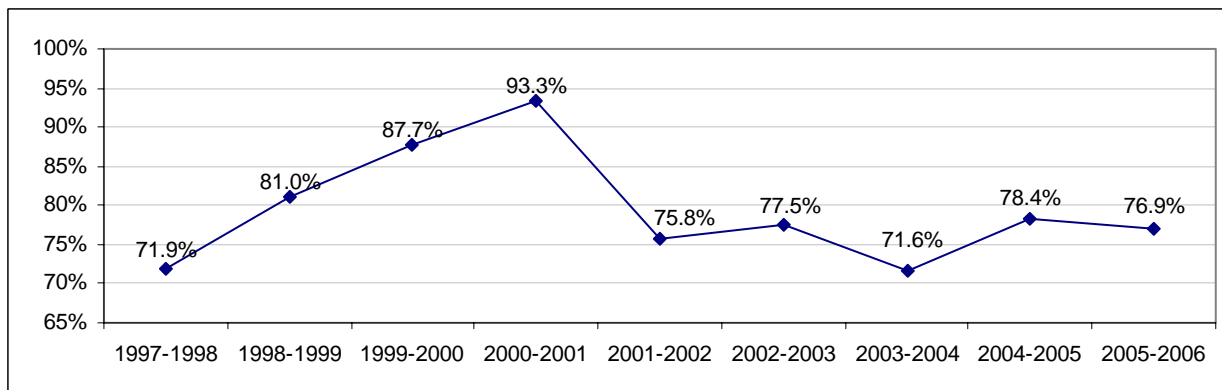


Figure 31: 10th grade math

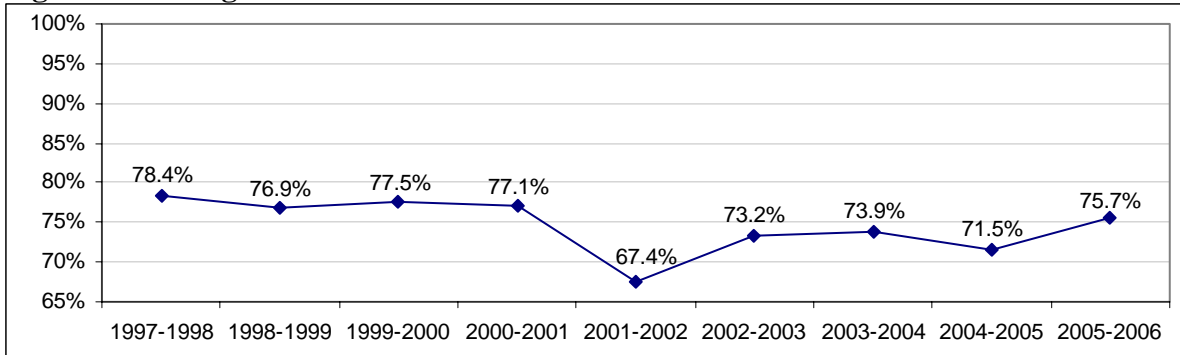


Figure 32: 10th grade science

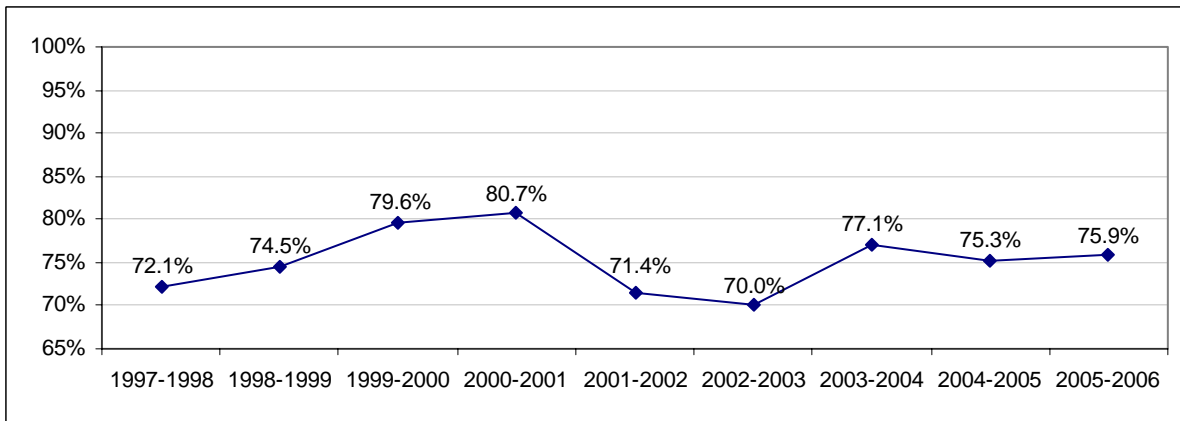
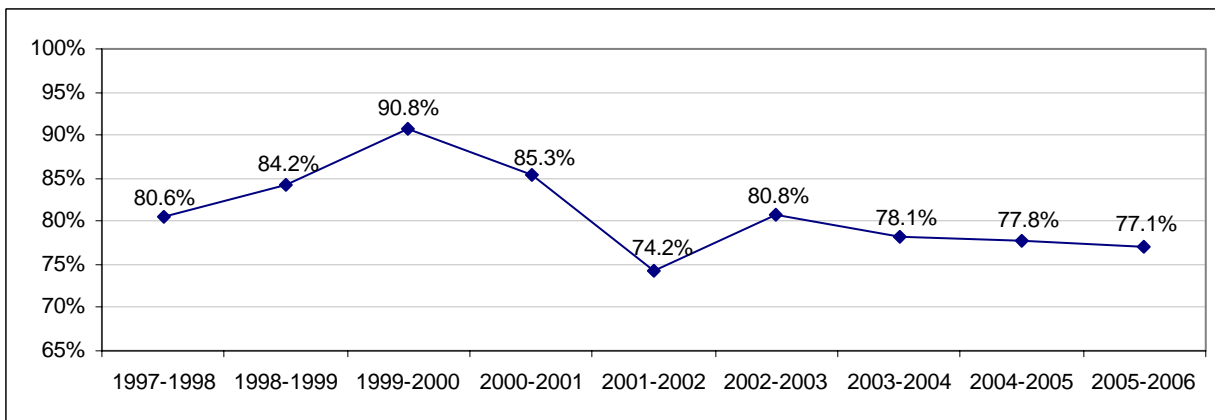


Figure 33: 10th grade social studies



The achievement gap among races was measured by the differential in the percentage of whites and minorities scoring at or above proficient. At RUSD, the gap between African-Americans and whites was higher than the gap between Hispanics and whites in 4th, 8th, and 10th grades. White 4th graders at RUSD scored 34 percentage points higher than African-American students in 2005-06, and 17 percentage points higher than Hispanic 4th graders. At the 8th grade level in RUSD, Hispanic students scored 19 percentage points lower than white students. African-American 8th graders scored 33 percentage points lower than white students in 2005-06. In the 10th grade, the disparities are higher than in 4th and 8th grade at RUSD. White 10th graders scored 42 percentage points higher in reading than African-American 10th graders and 27 percentage points higher than Hispanic 10th graders.

Table 31: WKCE percent proficient and advanced by race and ethnicity, 2005-06

Performance	African American						Hispanic						White						Differential								
	Reading	Language	Math	Science	Soc. studies	Average	Reading	Language	Math	Science	Soc. studies	Average	Reading	Language	Math	Science	Soc. studies	Average	Reading	Language	Math	Science	Soc. studies	Average	Black vs. white	Rank	Hisp. vs. white
Madison-4th	54%	48%	40%	44%	74%	52%	55%	46%	50%	47%	70%	53%	91%	88%	86%	88%	95%	90%	38%	1	36%	1					
Racine	51%	48%	31%	44%	68%	48%	67%	68%	51%	61%	81%	66%	85%	81%	72%	81%	91%	82%	34%	2	17%	3					
Kenosha	63%	55%	37%	46%	79%	56%	62%	62%	48%	50%	78%	60%	87%	85%	77%	81%	92%	84%	29%	3	25%	2					
Milwaukee	54%	49%	34%	39%	72%	50%	60%	59%	44%	54%	80%	59%	77%	75%	65%	72%	89%	76%	26%		16%						
Wisconsin	57%	53%	38%	44%	74%	53%	62%	60%	49%	56%	78%	61%	87%	84%	79%	85%	94%	86%	33%		25%						
Madison-8th	57%	39%	42%	44%	59%	48%	61%	42%	51%	52%	61%	53%	94%	81%	85%	87%	92%	88%	40%	1	34%	1					
Racine	47%	28%	35%	33%	46%	38%	65%	41%	47%	41%	64%	52%	82%	58%	70%	66%	79%	71%	33%	3	19%	3					
Kenosha	58%	32%	51%	42%	57%	48%	71%	51%	60%	52%	68%	61%	88%	70%	82%	81%	86%	81%	33%	2	21%	2					
Milwaukee	51%	31%	28%	27%	45%	37%	60%	34%	42%	37%	56%	46%	78%	59%	61%	65%	77%	68%	31%		22%						
Wisconsin	55%	35%	36%	33%	49%	41%	65%	40%	49%	47%	64%	53%	89%	71%	81%	81%	89%	82%	41%		30%						
Madison-10th	42%	36%	30%	24%	34%	33%	45%	40%	41%	36%	40%	40%	86%	82%	85%	82%	84%	84%	51%	1	44%	1					
Racine	26%	26%	22%	22%	30%	25%	46%	44%	39%	33%	44%	41%	68%	65%	67%	68%	68%	67%	42%	2	27%	2					
Kenosha	44%	37%	30%	24%	36%	34%	54%	51%	47%	42%	51%	49%	77%	72%	69%	69%	74%	72%	38%	3	23%	3					
Milwaukee	32%	33%	20%	16%	28%	26%	41%	41%	34%	29%	38%	37%	64%	62%	58%	55%	62%	60%	34%		24%						
Wisconsin	37%	36%	26%	22%	33%	31%	48%	45%	42%	38%	46%	44%	81%	76%	78%	79%	80%	79%	48%		35%						

Disparities on WKCE test scores were greater among students of different socioeconomic backgrounds than they were among students of different races. RUSD's gap among economically disadvantaged and advantaged students was the highest among peer districts in the 4th and 10th grades. Eighth grade students had the second highest disparity between advantaged and disadvantaged students. The gap among students of different backgrounds was greatest in the 10th grade. Students who were not disadvantaged scored 32 percentage points higher than that of those who were disadvantaged.

Table 32: WKCE percent proficient and advanced by economic status,2005-06

	Economically disadvantaged						Not economically disadvantaged						Differential	
	Reading	Language	Math	Science	Social studies	Average	Reading	Language	Math	Science	Social studies	Average	Differential	Rank
Madison-4th	56%	49%	47%	47%	75%	55%	91%	88%	87%	87%	94%	89%	35%	1
Racine	57%	56%	42%	52%	73%	56%	82%	78%	67%	76%	89%	78%	22%	3
Kenosha	64%	62%	51%	54%	79%	62%	90%	87%	77%	81%	94%	86%	24%	2
Milwaukee	56%	52%	38%	44%	74%	53%	76%	75%	61%	67%	88%	73%	21%	
Wisconsin	66%	62%	52%	60%	81%	64%	89%	87%	81%	87%	95%	88%	24%	
Madison-8th	61%	40%	49%	47%	61%	52%	94%	81%	85%	88%	94%	88%	37%	1
Racine	52%	27%	36%	33%	50%	40%	78%	56%	66%	62%	77%	68%	28%	2
Kenosha	68%	43%	60%	51%	63%	57%	90%	73%	83%	83%	88%	83%	26%	3
Milwaukee	53%	33%	33%	31%	47%	39%	70%	48%	49%	52%	47%	53%	14%	
Wisconsin	67%	43%	53%	52%	65%	56%	91%	73%	82%	83%	90%	84%	28%	
Madison-10th	42%	35%	34%	26%	34%	34%	86%	83%	85%	82%	84%	84%	50%	1
Racine	30%	30%	27%	27%	34	30%	63%	60%	60%	60%	63%	61%	32%	3
Kenosha	50%	44%	39%	35%	44%	42%	80%	75%	73%	72%	76%	75%	33%	2
Milwaukee	35%	35%	25%	21%	31%	29%	48%	47%	39%	34%	46%	43%	13%	
Wisconsin	52%	46%	45%	44%	50%	47%	81%	77%	79%	78%	80%	79%	32%	

ACT scores also measure student performance. In 2004-05, the percentage of RUSD students taking the ACT dropped, with 39.4% of students taking the exam. One year earlier, 47.9% of RUSD seniors took the exam. The district ranked 10th among peers in the percentage of students taking the exam. In 2004-05, the average composite score at RUSD was 21.2 points out of 36. Students scored an average of 21.6 points on the 2003-04 exam. RUSD ranked tenth among districts in composite ACT scores.

Table 33: ACT scores among peer districts, 2004-05

Performance	ACT test scores						
	Percent tested	English	Math	Reading	Science	Composite	Rank
Madison	60.7%	23.7	24.7	24.4	23.8	24.3	1
Kenosha	67.2%	21	20.9	21.6	21.5	21.4	9
Racine	39.4%	20.2	21.3	21.3	21.7	21.2	10
Green Bay	48.3%	21.3	23.1	22.4	22.7	22.5	3
Appleton	59.4%	22.1	22.9	23.1	22.8	22.8	2
Waukesha	60.5%	21.4	22.1	22.6	22.4	22.3	6
Eau Claire	56.3%	21.8	22.5	22.7	22.5	22.5	3
Janesville	48.1%	21.4	21.3	22.4	22.1	21.9	8
Oshkosh	61.3%	21.2	22.5	22.8	22.5	22.4	5
Sheboygan	52.6%	20.8	22.9	21.9	22.3	22.1	7
Milwaukee	38.0%	16.6	17	17.9	18.2	17.5	
Wisconsin	57.0%	21.4	22.1	22.3	22.3	22.2	

Figure 34: Trend in ACT composite scores, 1996-2005, RUSD

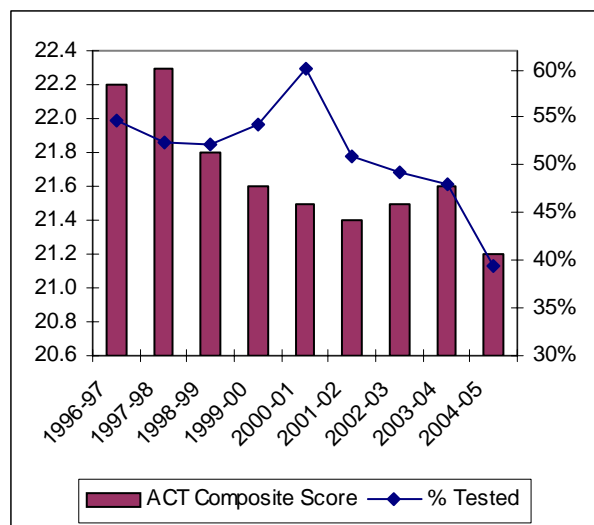
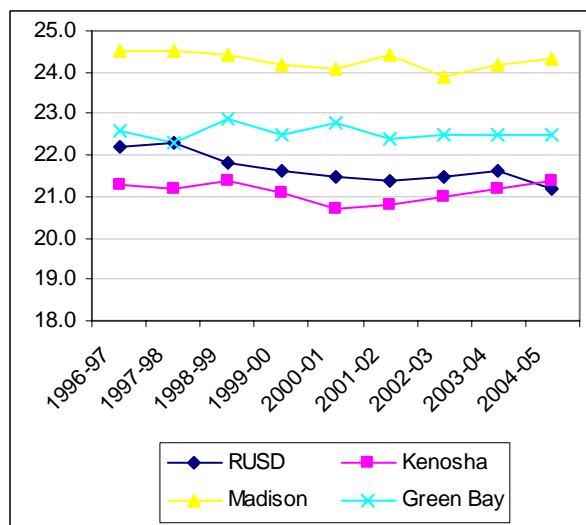


Figure 35: Trend in ACT composite scores, 1996-2005, peer districts



Advanced Placement (AP) and International Baccalaureate (IB) classes give students the opportunity to earn college level credit in high school. In 2005, 2.6% of students in RUSD passed either an AP or IB examination, ranking RUSD tenth among peers. The prior year, 3.8% of students passed a college level exam. The number of exams administered to RUSD students also decreased, from 439 to 365. Seventy-two percent of the IB test taken at RUSD were passed in 2005 at RUSD, while only 41% of the AP taken were passed. The combined percentage of 49.9% ranked RUSD well behind other peer districts.

Table 34: AP and IB tests among peer districts, 2005

Performance	Exams taken	% exams passed	Passed as a % of enrollment	Rank
Madison	1224	85.3%	12.2%	2
Kenosha	403	63.8%	3.9%	9
Racine AP	264	41.3%	1.6%	
Racine IB	101	72.2%	0.7%	
Racine total AP& IB	365	49.9%	2.6%	10
Green Bay	536	75.4%	6.2%	6
Appleton	806	69.2%	11.0%	3
Waukesha	627	71.6%	9.7%	4
Eau Claire	720	77.6%	15.6%	1
Janesville	427	67.0%	7.8%	5
Oshkosh	234	77.8%	5.4%	7
Sheboygan	273	63.0%	5.2%	8
Milwaukee	1,115	26.3%	1.1%	
Wisconsin	29,024	67.4%	6.9%	

From 1997 to 2005, RUSD witnessed a decrease in the number of AP exams passed as a percentage of enrollment. Scores fell from a high of 73% of exams passed in 1997, to a low of 41% of exams passed in 2005. Over the short term, scores fell from 51% of exams passed to 41% of exams passed from 2004 to 2005.

Table 35: AP tests among peer districts, 1997 - 2005

AP Scores	1997	1998	1999	2000	2001	2002	2003	2004	2005
Madison	85%	77%	88%	87%	81%	86%	85%	84%	85%
Kenosha	65%	69%	49%	47%	38%	48%	55%	53%	64%
Racine	73%	64%	58%	52%	52%	71%	58%	51%	41%
Green Bay	64%	74%	69%	72%	72%	74%	74%	78%	75%
Appleton	69%	87%	78%	78%	72%	72%	68%	72%	69%
Waukesha	52%	78%	53%	66%	70%	76%	78%	72%	72%
Eau Claire	74%	81%	81%	74%	72%	73%	71%	76%	78%
Janesville	62%	67%	61%	76%	76%	74%	71%	68%	67%
Oshkosh	67%	80%	79%	74%	68%	77%	77%	75%	78%
Sheboygan	83%	78%	80%	77%	74%	75%	71%	67%	63%
Milwaukee	32%	87%	33%	29%	29%	41%	37%	31%	26%
Wisconsin	66%	67%	68%	68%	65%	70%	68%	69%	67%

9th annual comparative analysis of the Racine Unified School District

Summary of rankings

<u>Summary of rankings</u>	Engagement						Discipline			
	Attendance		Truancy		Dropouts		Suspension		Expulsion	
	1997	2005	1997	2005	1997	2005	1997	2005	1997	2005
Madison	2	3	6	6	3	4	3	3	4	4
Kenosha	9	9	3	3	2	5	1	2	8	4
Racine	10	7	2	4	1	2	2	1	1	1
Green Bay	7	10	4	2	6	1	4	4	5	9
Appleton	4	4	10	7	9	9	7	6	7	6
Waukesha	1	1	9	10	8	6	5	8	2	3
Eau Claire	3	8	5	5	10	10	6	7	5	6
Janesville	8	2	1	1	5	3	10	5	3	2
Oshkosh	5	5	7	8	7	7	9	10	9	6
Sheboygan	6	6	8	9	4	8	8	9	9	9

<u>Summary of rankings</u>	Test scores									
	4th		8th		10th		ACT		AP	
	1997	2006	1997	2006	1997	2006	1997	2005	1997	2005
Madison	5	7	3	6	1	5	1	1	1	2
Kenosha	9	6	9	7	10	7	10	9	9	9
Racine	10	10	10	10	9	10	7	10	10	10
Green Bay	8	9	7	9	6	9	3	3	4	6
Appleton	2	2	4	3	3	2	8	2	3	3
Waukesha	1	3	1	1	4	3	9	6	6	4
Eau Claire	4	1	2	2	2	1	2	3	2	1
Janesville	6	4	5	5	7	6	4	8	7	5
Oshkosh	7	5	8	4	8	4	5	5	5	7
Sheboygan	3	8	6	8	5	8	6	7	8	8

<u>Summary of rankings</u>	Demographics					
	% minority		Free lunch		Property wealth	
	1998	2006	1998	2006	1997	2006
Madison	2	2	5	3	1	1
Kenosha	3	4	4	4	10	8
Racine	1	1	1	2	8	7
Green Bay	5	3	2	1	4	6
Appleton	6	7	9	9	3	5
Waukesha	7	6	10	10	2	2
Eau Claire	8	8	3	7	7	3
Janesville	10	9	8	6	5	9
Oshkosh	9	10	7	8	6	4
Sheboygan	4	5	6	4	9	10

<u>Summary of rankings</u>	Finances							
	Property tax rate		Property tax levy		State aid		Federal aid	
	1998	2006	1998	2006	1998	2006	1998	2006
Madison	1	1	1	1	10	10	5	5
Kenosha	7	7	9	6	4	4	3	2
Racine	8	10	10	9	1	2	2	3
Green Bay	4	4	3	5	6	5	1	1
Appleton	10	5	7	4	8	7	10	6
Waukesha	5	8	2	2	9	9	9	10
Eau Claire	3	3	4	3	3	8	4	9
Janesville	6	6	6	10	5	3	7	8
Oshkosh	9	9	8	8	7	6	8	7
Sheboygan	2	2	5	7	2	1	6	4

Appendix A-- Definitions of terms

This report is based on information supplied periodically by school districts to the Wisconsin Department of Public Instruction (DPI). Enrollment and financial data, and 3rd, 4th, 5th, 6th, 7th, 8th, and 10th grade test scores, are current as of 2005-06. Other information on performance, attendance, and discipline is from 2004-05.

For 1998-99, the DPI made some important changes in the definitions of several of its outcome measurements. Although these refinements enhance the ability to interpret outcome data, they prevent meaningful comparisons to previous years. In any case, data must be interpreted with caution. Measures of performance, attendance, and behavior are not necessarily a statement about the quality of the district, its staff, or priorities. Many other factors also come into play: the different methods and accuracy of measurement, the priorities of students and their parents, and the validity of measurements should be taken into consideration. Each measurement must be interpreted in light of its limitations.

Here are the definitions of the included measurements:

ACT scores: ACT data are reported for the class of 2005. Most students take the test to fulfill admissions requirements for colleges and universities. If a student has taken the test more than once (in either his or her junior or senior year), the most recent score was reported. The maximum possible score on any individual section is 36. The four sections of the test are English, math, reading, and science reasoning. The composite score is the weighted average of the subject area scores, out of a possible 36. The percentage of students tested is the number of students tested divided by the “third Friday enrollment” of the 12th grade.

Advanced placement tests: If a high school student receives a score of three, four, or five on an AP exam, he or she passed the test and can receive college credit. Students can take 29 exams in 16 fields. Schools may or may not offer formal courses in preparation for these exams. “Third Friday enrollment” data are used to calculate the percentage of students taking the tests.

Attendance: Based upon the state-required 180 school days, and with attendance taken twice daily, the attendance rate (expressed as a percentage) is computed by dividing the aggregate number of days students are in school by the aggregate number of possible student days in the school year. An attendance rate of 95% means that five out of every 100 students enrolled were not in school on a typical day.

Dropouts: According to the DPI, the definition of a dropout is a student who was enrolled in school at some time during the reported school year, was not enrolled at the beginning of the following school year, has not graduated from high school or completed a state or district-approved educational program, and does not meet any of the following exclusionary conditions: transfer to another public school district, private school, or state or district-approved educational program; temporary absence due to expulsion, suspension, or school-approved illness; or death. Starting with 2003-04, the dropout rate is the number of students who dropped out during the school term divided by the total number of students who were expected to complete the school term in that school or district. The latter number may be more or less than the enrollment due to student transfers in and out after the fall enrollment count date. “Total number of students expected to complete the school term” is the denominator used to calculate all dropout rates and is the sum of students who actually completed the school term plus dropouts.

Enrollment: Two types of enrollment data are important: 1) the enrollment as of the third Friday in September, literally a head count of how many children are enrolled in school on a specific day, and 2) the full-time equivalent enrollment, which accounts for pre-school and kindergarten children in school for only a portion of the day to calculate state aid and other financial data. In this report, head count enrollments are reported in the tables, but full-time equivalents are the basis for calculation of spending and revenue per pupil.

Extra/co-curricular activities: Extra-curricular activities are school-sanctioned activities intended to broaden, develop, and enhance a student's school experience in the areas of academics, athletics, and music. Participation is not required and the group or event is not offered for credit or grade. In general, the *Wisconsin Uniform Financial Accounting Requirements* (WUFAR) describes co-curricular activities as "instructional activities under the guidance and supervision of school staff designed to provide students such experiences as motivation, enjoyment, and improvement of skills. (They) supplement regular instructional activities and include... band, chorus, speech and debate, (and) athletics." Data are collected for 6th through 12th grades.

Extra/co-curricular participation rate: The participation rate for each activity category is the number of participants divided by the 6th through 12th grade enrollment, counted on the third Friday in September.

Expulsions: Expulsion is the removal of a student from school permanently. Expulsions are recorded in terms of students expelled as well as days lost due to expulsion. The expulsion rates were calculated by dividing the number of expelled students by the pre-kindergarten through 12th grade enrollment of the school district.

4th, 8th, and 10th grade knowledge and concepts tests: These tests measure student knowledge in the areas of reading, language arts, mathematics, science, and social studies. Prior to 2002-2003, the scores are the national percentiles, which correspond to the raw scores. In 2002-2003 and 2003-2004, the tests were no longer normalized to a national standard. During these years, the Public Policy Forum reports the district's scores as a percent of the state-wide average score.

3rd, 5th, 6th and 7th grade knowledge and concepts tests: These tests measure student knowledge in the areas of reading and mathematics. The 2005-06 school year was the first year in which knowledge and concepts examinations were administered to students in the 3rd, 5th, 6th, and 7th grades. As a result of this change, historical comparisons are not available for these grades.

Free lunch eligibility: The only available measure of the income level of pupils. It is the percentage of pupils who qualify under federal guidelines for free or reduced-price lunch, and, therefore, roughly measures the percentage of low-income children in a school.

Graduation rate: Starting with 2003-04, graduation rates are defined as the number of graduates divided by an estimate of the total cohort group measured from the beginning of high school, expressed as a percentage. This cohort group includes graduates, other high school graduates, and other students who reached the age 21 in the school year. The cohort group also includes cohort dropouts over four years. Prior to 2003-04, it was calculated by taking the number of graduates divided by the number of graduates plus dropouts over four years, expressed as a percentage.

Habitual truancy: According to DPI, the definition of a habitual truant is a student who is absent from school without an acceptable excuse for part or all of five or more days on which school is held during a semester. The habitual truancy rate (expressed as a percentage) is the number of habitual truants divided by kindergarten through 12th grade enrollment counted on the third Friday in September.

Income per pupil: Based on state tax returns, this is a calculation of aggregate earned income among residents of each school district divided by the district full-time enrollment (FTE). The result is an indicator of community wealth that takes into account both the relative number of children in the community and the proportion of the district's children who attend public schools.

Income per return: The aggregate income that was reported to the Wisconsin Department of Revenue divided by the number of returns filed.

Property taxes: An equalized school tax rate, which makes it possible to compare the school tax effort from one community to another. The equalized rate is the amount of money property taxpayers were charged in December 2005 (for the 2005-06 school year) for each \$1,000 of property value at full market value.

Property value per pupil: Another measure of community wealth, this relates directly to Wisconsin's formula for calculating state aid to school districts. The numbers represent the tax base of the school district as measured by equalized taxable property values as of 2005-06. It is a reliable measurement for purposes of comparing the property wealth of school districts.

Retention rates: Retentions are students who, by local district policy, must either repeat a grade or need additional time to complete the prescribed program. The number of retentions is reported for all grades except pre-kindergarten. The retention rate is the number of retentions divided by the kindergarten through 12th grade enrollment.

Revenue per pupil: Each autumn, school districts file reports on budgeted revenue and spending. Data in this report were taken from those reports filed in fall 2005. The two principal sources of revenue for schools – property taxes and state aid – are reported on a per-pupil basis (using full-time equivalent enrollments). Also reported are the per-pupil revenues from federal sources.

Spending per pupil: Operations spending per pupil refers to the cost of running the system on a daily basis. It is more useful to look at operations spending for comparative purposes because capital spending and debt service can vary dramatically from year to year (depending on whether a district is building new schools). Operations spending is divided into six categories for the purposes of this report:

- Instruction – Direct spending on educational programs that generally take place in the classroom.
- Pupil services – A wide variety of services outside the classroom, such as guidance counseling, social work, curriculum development, libraries, vocational services, and extracurricular activities.
- Instructional staff services – Includes spending on improvement to instructional staff, library media, and supervision and coordination of staff.

- General administration – Central office expenses related to district administration, such as the superintendent’s office and the school board.
- Building administration – Expenses related to the administration of each school building, primarily the principal’s office.
- Transportation.
- Other – all expenses not included in the above categories, including community recreation programs, staff services, maintenance, utilities, and other overhead functions.

Suspensions: Suspension is an administrative action that temporarily excludes a student from school. Suspensions are recorded three ways: 1) the number of individual students suspended at least once during the school year, 2) the number of suspensions (a larger number because some students are suspended more than once), and 3) the number of days lost because of suspension. This report measures suspensions as the number of days lost because of suspension. The measurement is reported as a percentage of total possible school days lost to suspension.

Case**Racine School Report**

High

February 2007

Principal: Tom Sager**Total Enrollment by Year**

2005-2006:	1,966
2004-2005:	2,053
2003-2004:	1,954
2002-2003:	1,942
2001-2002:	1,904
2000-2001:	1,838
1999-2000:	1,760
1998-1999:	1,874
1997-1998:	1,993

Attendance

Attendance Rate:	92.3%
Pupils Expelled:	31
Habitual Truants:	337
Truancy Rate:	16.4%
Pupils Suspended:	263
Suspension Rate:	12.8%
Dropouts:	78
Dropout Rate:	3.9%
Graduation Rate:	74.7%

**Enrollment
Demographics**

Asian:	44
African American:	513
Hispanic:	233
Indian:	7
White:	1,169
% African American:	26.1%
% Minority:	40.5%
Free Lunch Eligible:	29.3%

Standardized Tests**10th****At/Above Proficient**

Reading:	54.2%
Language:	53.7%
Math:	53.9%
Science:	55.2%
Social Studies:	53.4%

ACT

Percent Tested:	44.4%
English:	
Math:	
Reading:	
Science:	
Composite:	

Note: Blank cells are not applicable.

Horlick**Racine School Report**

High

February 2007

Principal: Nola Starling-Ratliff**Total Enrollment by Year**

2005-2006:	2,166
2004-2005:	2,154
2003-2004:	2,163
2002-2003:	2,175
2001-2002:	2,094
2000-2001:	1,930
1999-2000:	1,925
1998-1999:	1,995
1997-1998:	1,974

Attendance

Attendance Rate:	92.8%
Pupils Expelled:	13
Habitual Truants:	512
Truancy Rate:	23.8%
Pupils Suspended:	315
Suspension Rate:	14.6%
Dropouts:	127
Dropout Rate:	5.8%
Graduation Rate:	69.5%

**Enrollment
Demographics**

Asian:	20
African American:	491
Hispanic:	331
Indian:	13
White:	1,311
% African American:	22.7%
% Minority:	39.5%
Free Lunch Eligible:	20.3%

Standardized Tests**10th****At/Above Proficient**

Reading:	57.3%
Language:	53.9%
Math:	52.5%
Science:	50.2%
Social Studies:	58.5%

ACT

Percent Tested:	35.8%
English:	19.9
Math:	20.9
Reading:	21.1
Science:	21.5
Composite:	21.0

Note: Blank cells are not applicable.

Keith R. Mack Achieve*Racine School Report*

High

*February 2007***Principal:** Robert Holzem**Total Enrollment by Year**

2005-2006:	107
2004-2005:	131
2003-2004:	121
2002-2003:	131
2001-2002:	159
2000-2001:	157
1999-2000:	138
1998-1999:	136
1997-1998:	154

Attendance

Attendance Rate:	99.9%
Pupils Expelled:	37
Habitual Truants:	167
Truancy Rate:	127.5%
Pupils Suspended:	184
Suspension Rate:	140.5%
Dropouts:	57
Dropout Rate:	15.1%
Graduation Rate:	0.0%

**Enrollment
Demographics**

Asian:	0
African American:	62
Hispanic:	11
Indian:	1
White:	33
% African American:	57.9%
% Minority:	69.2%
Free Lunch Eligible:	2.6%

Standardized Tests**10th****At/Above Proficient**

Reading:	
Language:	
Math:	
Science:	
Social Studies:	

ACT

Percent Tested:	
English:	
Math:	
Reading:	
Science:	
Composite:	

Note: Blank cells are not applicable.

Park**Racine School Report**

High

February 2007

Principal: John Scott**Total Enrollment by Year**

2005-2006:	2,305
2004-2005:	2,287
2003-2004:	2,224
2002-2003:	2,252
2001-2002:	2,210
2000-2001:	2,146
1999-2000:	2,181
1998-1999:	2,237
1997-1998:	2,190

Attendance

Attendance Rate:	95.7%
Pupils Expelled:	21
Habitual Truants:	445
Truancy Rate:	19.5%
Pupils Suspended:	218
Suspension Rate:	9.5%
Dropouts:	68
Dropout Rate:	3.0%
Graduation Rate:	85.1%

**Enrollment
Demographics**

Asian:	21
African American:	567
Hispanic:	336
Indian:	4
White:	1,377
% African American:	24.6%
% Minority:	40.3%
Free Lunch Eligible:	25.7%

Standardized Tests**10th**

	<u>At/Above Proficient</u>
Reading:	56.8%
Language:	54.1%
Math:	56.6%
Science:	56.6%
Social Studies:	59.5%

ACT

Percent Tested:	39.2%
English:	19.3
Math:	20.6
Reading:	20.9
Science:	21.2
Composite:	20.6

Note: Blank cells are not applicable.

Walden III

High

Racine School Report

February 2007

Principal: Robert Holzem**Total Enrollment by Year**

2005-2006:	284
2004-2005:	281
2003-2004:	269
2002-2003:	226
2001-2002:	206
2000-2001:	263
1999-2000:	301
1998-1999:	296
1997-1998:	298

Attendance

Attendance Rate:	95.4%
Pupils Expelled:	0
Habitual Truants:	3
Truancy Rate:	1.1%
Pupils Suspended:	8
Suspension Rate:	2.8%
Dropouts:	0
Dropout Rate:	0.0%
Graduation Rate:	100.0%

**Enrollment
Demographics**

Asian:	7
African American:	25
Hispanic:	30
Indian:	0
White:	222
% African American:	8.8%
% Minority:	21.8%
Free Lunch Eligible:	9.8%

Standardized Tests**10th****At/Above Proficient**

Reading:	92.3%
Language:	90.8%
Math:	90.8%
Science:	86.2%
Social Studies:	92.3%

ACT

Percent Tested:	73.3%
English:	22.4
Math:	22.1
Reading:	23.4
Science:	22.5
Composite:	22.7

Note: Blank cells are not applicable.

The REAL School

Middle & High

Racine School Report

February 2007

Principal: Robert Holzem

Total Enrollment by Year

2005-2006:	220
2004-2005:	195
2003-2004:	200
2002-2003:	208
2001-2002:	126
2000-2001:	
1999-2000:	28
1998-1999:	
1997-1998:	

Attendance

Attendance Rate:	98.4%
Pupils Expelled:	0
Habitual Truants:	3
Truancy Rate:	1.5%
Pupils Suspended:	3
Suspension Rate:	1.5%
Dropouts:	2
Dropout Rate:	1.1%
Graduation Rate:	92.9%

Enrollment Demographics

Asian:	5
African American:	25
Hispanic:	31
Indian:	1
White:	158
% African American:	11.4%
% Minority:	28.2%
Free Lunch Eligible:	19.2%

Standardized Tests

<u>6th</u>	Reading:	<u>At/Above Proficient</u> 97.6%
	Math:	70.7%
<u>7th</u>	Reading:	<u>At/Above Proficient</u> 93.8%
	Math:	87.5%
<u>8th</u>	Reading:	<u>At/Above Proficient</u> 93.3%
	Language:	80.0%
	Math:	86.7%
	Science:	60.0%
	Social Studies:	86.7%
<u>10th</u>	Reading:	<u>At/Above Proficient</u> 90.9%
	Language:	81.8%
	Math:	81.8%
	Science:	77.3%
	Social Studies:	81.8%
<u>ACT</u>	Percent Tested:	56.3%
	English:	17.9
	Math:	18.2
	Reading:	19.0
	Science:	19.3
	Composite:	18.8

Note: Blank cells are not applicable.

Gilmore

Middle

*Racine School Report**February 2007***Principal:** Dan Thielen**Total Enrollment by Year**

2005-2006:	787
2004-2005:	824
2003-2004:	919
2002-2003:	979
2001-2002:	972
2000-2001:	962
1999-2000:	913
1998-1999:	914
1997-1998:	956

**Enrollment
Demographics**

Asian:	11
African American:	259
Hispanic:	150
Indian:	7
White:	360
% African American:	32.9%
% Minority:	54.3%
Free Lunch Eligible:	56.2%

Attendance

Attendance Rate:	94.3%
Pupils Expelled:	17
Habitual Truants:	46
Truancy Rate:	5.6%
Pupils Suspended:	228
Suspension Rate:	27.7%
Dropouts:	3
Dropout Rate:	0.5%

Standardized Tests**6th**

	<u>At/Above Proficient</u>
Reading:	63.3%
Math:	45.9%

7th

	<u>At/Above Proficient</u>
Reading:	64.1%
Math:	50.2%

8th

	<u>At/Above Proficient</u>
Reading:	56.6%
Language:	33.2%
Math:	40.7%
Science:	35.4%
Social Studies:	60.6%

Note: Blank cells are not applicable.

Jerstad-Agerholm

Middle

*Racine School Report**February 2007***Principal:** Synthia Taylor**Total Enrollment by Year**

2005-2006:	785
2004-2005:	810
2003-2004:	820
2002-2003:	760
2001-2002:	761
2000-2001:	434
1999-2000:	436
1998-1999:	484
1997-1998:	477

**Enrollment
Demographics**

Asian:	9
African American:	170
Hispanic:	99
Indian:	1
White:	506
% African American:	21.7%
% Minority:	35.5%
Free Lunch Eligible:	35.7%

Attendance

Attendance Rate:	94.2%
Pupils Expelled:	19
Habitual Truants:	33
Truancy Rate:	4.1%
Pupils Suspended:	222
Suspension Rate:	27.4%
Dropouts:	4
Dropout Rate:	0.8%

Standardized Tests**6th**

	<u>At/Above Proficient</u>
Reading:	72.5%
Math:	60.6%

7th

	<u>At/Above Proficient</u>
Reading:	75.7%
Math:	67.3%

8th

	<u>At/Above Proficient</u>
Reading:	78.1%
Language:	54.3%
Math:	70.0%
Science:	57.1%
Social Studies:	68.1%

Note: Blank cells are not applicable.

McKinley

Middle

*Racine School Report**February 2007***Principal:** Lori Sue PelkTotal Enrollment by Year

2005-2006:	824
2004-2005:	911
2003-2004:	988
2002-2003:	1,022
2001-2002:	1,020
2000-2001:	998
1999-2000:	998
1998-1999:	1,009
1997-1998:	1,006

Enrollment
Demographics

Asian:	11
African American:	217
Hispanic:	116
Indian:	1
White:	479
% African American:	26.3%
% Minority:	41.9%
Free Lunch Eligible:	40.5%

Attendance

Attendance Rate:	94.3%
Pupils Expelled:	21
Habitual Truants:	46
Truancy Rate:	5.0%
Pupils Suspended:	216
Suspension Rate:	23.7%
Dropouts:	4
Dropout Rate:	0.7%

Standardized Tests6th

	<u>At/Above Proficient</u>
Reading:	76.4%
Math:	58.3%

7th

	<u>At/Above Proficient</u>
Reading:	77.7%
Math:	74.2%

8th

	<u>At/Above Proficient</u>
Reading:	78.9%
Language:	63.4%
Math:	65.0%
Science:	67.9%
Social Studies:	79.3%

Note: Blank cells are not applicable.

Mitchell

Middle

*Racine School Report**February 2007***Principal:** Robert Wilhelm**Total Enrollment by Year**

2005-2006:	891
2004-2005:	935
2003-2004:	981
2002-2003:	1,017
2001-2002:	915
2000-2001:	913
1999-2000:	955
1998-1999:	907
1997-1998:	890

Attendance

Attendance Rate:	94.7%
Pupils Expelled:	22
Habitual Truants:	67
Truancy Rate:	7.2%
Pupils Suspended:	218
Suspension Rate:	23.3%
Dropouts:	1
Dropout Rate:	0.2%

**Enrollment
Demographics**

Asian:	5
African American:	248
Hispanic:	234
Indian:	1
White:	403
% African American:	27.8%
% Minority:	54.8%
Free Lunch Eligible:	25.9%

Standardized Tests**6th****At/Above Proficient**

Reading:
Math:

7th**At/Above Proficient**

Reading: **73.6%**
Math: **55.9%**

8th**At/Above Proficient**

Reading: **70.8%**
Language: **39.4%**
Math: **52.6%**
Science: **51.5%**
Social Studies: **66.1%**

Note: Blank cells are not applicable.

Starbuck

Middle

*Racine School Report**February 2007***Principal:** Sandy Johannsen BrandTotal Enrollment by Year

2005-2006:	847
2004-2005:	839
2003-2004:	830
2002-2003:	864
2001-2002:	828
2000-2001:	837
1999-2000:	822
1998-1999:	886
1997-1998:	964

Attendance

Attendance Rate:	94.6%
Pupils Expelled:	0
Habitual Truants:	42
Truancy Rate:	5.0%
Pupils Suspended:	223
Suspension Rate:	26.6%
Dropouts:	2
Dropout Rate:	0.4%

Enrollment
Demographics

Asian:	19
African American:	364
Hispanic:	98
Indian:	5
White:	361
% African American:	43.0%
% Minority:	57.4%
Free Lunch Eligible:	54.9%

Standardized Tests6th

	<u>At/Above Proficient</u>
Reading:	70.9%
Math:	52.1%

7th

	<u>At/Above Proficient</u>
Reading:	73.7%
Math:	59.7%

8th

	<u>At/Above Proficient</u>
Reading:	67.8%
Language:	47.4%
Math:	56.5%
Science:	54.8%
Social Studies:	64.8%

Note: Blank cells are not applicable.

Walden III

Middle

*Racine School Report**February 2007***Principal:** Robert Holzem**Total Enrollment by Year**

2005-2006:	220
2004-2005:	223
2003-2004:	220
2002-2003:	214
2001-2002:	209
2000-2001:	209
1999-2000:	217
1998-1999:	227
1997-1998:	210

Attendance

Attendance Rate:	96.4%
Pupils Expelled:	0
Habitual Truants:	0
Truancy Rate:	0.0%
Pupils Suspended:	7
Suspension Rate:	3.1%
Dropouts:	0
Dropout Rate:	0.0%

**Enrollment
Demographics**

Asian:	3
African American:	35
Hispanic:	33
Indian:	1
White:	148
% African American:	15.9%
% Minority:	32.7%
Free Lunch Eligible:	16.4%

Standardized Tests**6th**

	<u>At/Above Proficient</u>
Reading:	94.1%
Math:	82.4%

7th

	<u>At/Above Proficient</u>
Reading:	91.8%
Math:	91.8%

8th

	<u>At/Above Proficient</u>
Reading:	98.5%
Language:	82.1%
Math:	97.0%
Science:	92.5%
Social Studies:	97.0%

Note: Blank cells are not applicable.

Fine Arts**Racine School Report**

Grade

February 2007

Principal: Doug Clum

Total Enrollment by Year

2005-2006:	336
2004-2005:	329
2003-2004:	325
2002-2003:	306
2001-2002:	309
2000-2001:	325
1999-2000:	349
1998-1999:	343
1997-1998:	346

**Enrollment
Demographics**

Asian:	10
African American:	64
Hispanic:	44
Indian:	2
White:	216
% African American:	19.0%
% Minority:	35.7%
Free Lunch Eligible:	16.5%

Attendance

Attendance Rate:	96.1%
Pupils Expelled:	0
Habitual Truants:	1
Truancy Rate:	0.3%
Pupils Suspended:	3
Suspension Rate:	0.9%

Standardized Tests**3rd**

	<u>At/Above Proficient</u>
Reading:	84.0%
Math:	68.0%

4th

	<u>At/Above Proficient</u>
Reading:	100.0%
Language:	95.7%
Math:	84.8%
Science:	91.3%
Social Studies:	100.0%

5th

	<u>At/Above Proficient</u>
Reading:	93.3%
Math:	82.7%

Note: Blank cells are not applicable.

Fratt*Racine School Report*

Grade

*February 2007***Principal:** Mary Rath**Total Enrollment by Year**

2005-2006:	532
2004-2005:	533
2003-2004:	543
2002-2003:	576
2001-2002:	600
2000-2001:	589
1999-2000:	563
1998-1999:	549
1997-1998:	591

**Enrollment
Demographics**

Asian:	3
African American:	101
Hispanic:	235
Indian:	2
White:	191
% African American:	19.0%
% Minority:	64.1%
Free Lunch Eligible:	63.2%

Attendance

Attendance Rate:	94.4%
Pupils Expelled:	1
Habitual Truants:	18
Truancy Rate:	3.4%
Pupils Suspended:	49
Suspension Rate:	9.2%

Standardized Tests**3rd**

	<u>At/Above Proficient</u>
Reading:	58.8%
Math:	40.0%

4th

	<u>At/Above Proficient</u>
Reading:	60.3%
Language:	58.8%
Math:	42.6%
Science:	61.8%
Social Studies:	76.5%

5th

	<u>At/Above Proficient</u>
Reading:	55.4%
Math:	41.9%

Note: Blank cells are not applicable.

Giese*Racine School Report*

Grade

*February 2007***Principal:** Gayle Titus**Total Enrollment by Year**

2005-2006:	341
2004-2005:	341
2003-2004:	341
2002-2003:	363
2001-2002:	410
2000-2001:	420
1999-2000:	388
1998-1999:	422
1997-1998:	454

**Enrollment
Demographics**

Asian:	3
African American:	152
Hispanic:	82
Indian:	2
White:	102
% African American:	44.6%
% Minority:	70.1%
Free Lunch Eligible:	63.2%

Attendance

Attendance Rate:	94.7%
Pupils Expelled:	0
Habitual Truants:	12
Truancy Rate:	3.5%
Pupils Suspended:	48
Suspension Rate:	14.1%

Standardized Tests**3rd**

	<u>At/Above Proficient</u>
Reading:	65.1%
Math:	39.5%

4th

	<u>At/Above Proficient</u>
Reading:	72.7%
Language:	60.6%
Math:	60.6%
Science:	66.7%
Social Studies:	84.8%

5th

	<u>At/Above Proficient</u>
Reading:	69.2%
Math:	38.5%

Note: Blank cells are not applicable.

Gifford*Racine School Report*

Grade

*February 2007***Principal:** Steven Russo**Total Enrollment by Year**

2005-2006:	909
2004-2005:	837
2003-2004:	843
2002-2003:	832
2001-2002:	788
2000-2001:	792
1999-2000:	792
1998-1999:	854
1997-1998:	816

**Enrollment
Demographics**

Asian:	15
African American:	209
Hispanic:	87
Indian:	2
White:	596
% African American:	23.0%
% Minority:	34.4%
Free Lunch Eligible:	26.5%

Attendance

Attendance Rate:	95.2%
Pupils Expelled:	1
Habitual Truants:	25
Truancy Rate:	3.0%
Pupils Suspended:	51
Suspension Rate:	6.1%

Standardized Tests**3rd**

	<u>At/Above Proficient</u>
Reading:	85.0%
Math:	64.2%

4th

	<u>At/Above Proficient</u>
Reading:	85.7%
Language:	75.6%
Math:	66.4%
Science:	78.2%
Social Studies:	90.8%

5th

	<u>At/Above Proficient</u>
Reading:	77.3%
Math:	74.2%

Note: Blank cells are not applicable.

Goodland**Racine School Report**

Grade

February 2007

Principal: Billie Marie Novick**Total Enrollment by Year**

2005-2006:	321
2004-2005:	341
2003-2004:	352
2002-2003:	376
2001-2002:	385
2000-2001:	410
1999-2000:	430
1998-1999:	383
1997-1998:	401

**Enrollment
Demographics**

Asian:	7
African American:	146
Hispanic:	54
Indian:	0
White:	114
% African American:	45.5%
% Minority:	64.5%
Free Lunch Eligible:	62.0%

Attendance

Attendance Rate:	94.1%
Pupils Expelled:	2
Habitual Truants:	28
Truancy Rate:	9.1%
Pupils Suspended:	7
Suspension Rate:	2.1%

Standardized Tests**3rd**

	<u>At/Above Proficient</u>
Reading:	63.2%
Math:	31.6%

4th

	<u>At/Above Proficient</u>
Reading:	66.7%
Language:	69.4%
Math:	50.0%
Science:	58.3%
Social Studies:	77.8%

5th

	<u>At/Above Proficient</u>
Reading:	55.3%
Math:	23.7%

Note: Blank cells are not applicable.

Janes*Racine School Report*

Grade

*February 2007***Principal:** Deborah Coca**Total Enrollment by Year**

2005-2006:	403
2004-2005:	394
2003-2004:	384
2002-2003:	397
2001-2002:	392
2000-2001:	396
1999-2000:	406
1998-1999:	410
1997-1998:	415

**Enrollment
Demographics**

Asian:	1
African American:	98
Hispanic:	247
Indian:	1
White:	56
% African American:	24.3%
% Minority:	86.1%
Free Lunch Eligible:	91.4%

Attendance

Attendance Rate:	95.7%
Pupils Expelled:	0
Habitual Truants:	21
Truancy Rate:	5.3%
Pupils Suspended:	13
Suspension Rate:	3.3%

Standardized Tests**3rd**

	<u>At/Above Proficient</u>
Reading:	42.9%
Math:	33.9%

4th

	<u>At/Above Proficient</u>
Reading:	60.3%
Language:	67.2%
Math:	56.9%
Science:	51.7%
Social Studies:	89.7%

5th

	<u>At/Above Proficient</u>
Reading:	86.0%
Math:	50.0%

Note: Blank cells are not applicable.

Jefferson Lighthouse

Racine School Report

Grade

February 2007

Principal: Gary Goelz

Total Enrollment by Year

2005-2006:	561
2004-2005:	542
2003-2004:	550
2002-2003:	564
2001-2002:	562
2000-2001:	552
1999-2000:	581
1998-1999:	585
1997-1998:	577

Enrollment Demographics

Asian:	18
African American:	47
Hispanic:	59
Indian:	1
White:	436
% African American:	8.4%
% Minority:	22.3%
Free Lunch Eligible:	12.6%

Attendance

Attendance Rate:	96.2%
Pupils Expelled:	0
Habitual Truants:	0
Truancy Rate:	0.0%
Pupils Suspended:	1
Suspension Rate:	0.2%

Standardized Tests

3rd

	<u>At/Above Proficient</u>
Reading:	96.8%
Math:	88.4%

4th

	<u>At/Above Proficient</u>
Reading:	93.5%
Language:	94.6%
Math:	94.6%
Science:	94.6%
Social Studies:	96.7%

5th

	<u>At/Above Proficient</u>
Reading:	98.9%
Math:	96.7%

Note: Blank cells are not applicable.

Jerstad-Agerholm*Racine School Report*

Grade

*February 2007***Principal:** Cecilia Holley-Young**Total Enrollment by Year**

2005-2006:	365
2004-2005:	334
2003-2004:	361
2002-2003:	404
2001-2002:	435
2000-2001:	776
1999-2000:	812
1998-1999:	853
1997-1998:	847

**Enrollment
Demographics**

Asian:	10
African American:	119
Hispanic:	66
Indian:	1
White:	169
% African American:	32.6%
% Minority:	53.7%
Free Lunch Eligible:	48.8%

Attendance

Attendance Rate:	93.8%
Pupils Expelled:	1
Habitual Truants:	18
Truancy Rate:	5.4%
Pupils Suspended:	58
Suspension Rate:	17.4%

Standardized Tests**3rd**

	<u>At/Above Proficient</u>
Reading:	59.1%
Math:	50.0%

4th

	<u>At/Above Proficient</u>
Reading:	53.8%
Language:	59.0%
Math:	38.5%
Science:	48.7%
Social Studies:	66.7%

5th

	<u>At/Above Proficient</u>
Reading:	83.0%
Math:	57.4%

Note: Blank cells are not applicable.

Johnson*Racine School Report*

Grade

*February 2007***Principal:** Rose Seeger**Total Enrollment by Year**

2005-2006:	575
2004-2005:	407
2003-2004:	483
2002-2003:	507
2001-2002:	556
2000-2001:	516
1999-2000:	578
1998-1999:	556
1997-1998:	573

**Enrollment
Demographics**

Asian:	17
African American:	255
Hispanic:	98
Indian:	0
White:	205
% African American:	44.3%
% Minority:	64.3%
Free Lunch Eligible:	56.2%

Attendance

Attendance Rate:	94.7%
Pupils Expelled:	1
Habitual Truants:	11
Truancy Rate:	2.7%
Pupils Suspended:	39
Suspension Rate:	9.6%

Standardized Tests**3rd**

	<u>At/Above Proficient</u>
Reading:	64.8%
Math:	36.6%

4th

	<u>At/Above Proficient</u>
Reading:	67.3%
Language:	73.1%
Math:	46.2%
Science:	61.5%
Social Studies:	94.2%

5th

	<u>At/Above Proficient</u>
Reading:	68.9%
Math:	51.1%

Note: Blank cells are not applicable.

Jones*Racine School Report*

Grade

*February 2007***Principal:** Sharon Campbell**Total Enrollment by Year**

2005-2006:	461
2004-2005:	465
2003-2004:	461
2002-2003:	458
2001-2002:	456
2000-2001:	454
1999-2000:	460
1998-1999:	443
1997-1998:	448

**Enrollment
Demographics**

Asian:	6
African American:	59
Hispanic:	154
Indian:	1
White:	241
% African American:	12.8%
% Minority:	47.7%
Free Lunch Eligible:	30.3%

Attendance

Attendance Rate:	95.6%
Pupils Expelled:	0
Habitual Truants:	4
Truancy Rate:	0.9%
Pupils Suspended:	11
Suspension Rate:	2.4%

Standardized Tests**3rd**

	<u>At/Above Proficient</u>
Reading:	70.5%
Math:	54.1%

4th

	<u>At/Above Proficient</u>
Reading:	80.6%
Language:	71.6%
Math:	64.2%
Science:	71.6%
Social Studies:	76.1%

5th

	<u>At/Above Proficient</u>
Reading:	64.5%
Math:	53.2%

Note: Blank cells are not applicable.

Julian Thomas*Racine School Report*

Grade

*February 2007***Principal:** Angela Ress Apmann**Total Enrollment by Year**

2005-2006:	349
2004-2005:	357
2003-2004:	374
2002-2003:	
2001-2002:	
2000-2001:	
1999-2000:	
1998-1999:	
1997-1998:	

**Enrollment
Demographics**

Asian:	0
African American:	203
Hispanic:	98
Indian:	0
White:	48
% African American:	58.2%
% Minority:	86.2%
Free Lunch Eligible:	94.7%

Attendance

Attendance Rate:	93.8%
Pupils Expelled:	1
Habitual Truants:	22
Truancy Rate:	7.1%
Pupils Suspended:	55
Suspension Rate:	15.4%

Standardized Tests

<u>3rd</u>	<u>At/Above Proficient</u>
	Reading: 45.7%
	Math: 34.8%
<u>4th</u>	<u>At/Above Proficient</u>
	Reading: 47.1%
	Language: 52.9%
	Math: 26.5%
	Science: 35.3%
	Social Studies: 55.9%
<u>5th</u>	<u>At/Above Proficient</u>
	Reading: 37.0%
	Math: 22.2%

Note: Blank cells are not applicable.

Knapp*Racine School Report*

Grade

*February 2007***Principal:** Mike RupnowTotal Enrollment by Year

2005-2006:	545
2004-2005:	516
2003-2004:	490
2002-2003:	513
2001-2002:	512
2000-2001:	558
1999-2000:	589
1998-1999:	627
1997-1998:	634

Enrollment
Demographics

Asian:	4
African American:	216
Hispanic:	114
Indian:	4
White:	207
% African American:	39.6%
% Minority:	62.0%
Free Lunch Eligible:	64.4%

Attendance

Attendance Rate:	93.4%
Pupils Expelled:	0
Habitual Truants:	29
Truancy Rate:	6.2%
Pupils Suspended:	58
Suspension Rate:	11.2%

Standardized Tests3rd

	<u>At/Above Proficient</u>
Reading:	41.1%
Math:	25.0%

4th

	<u>At/Above Proficient</u>
Reading:	60.8%
Language:	60.8%
Math:	54.9%
Science:	58.8%
Social Studies:	82.4%

5th

	<u>At/Above Proficient</u>
Reading:	57.6%
Math:	28.8%

Note: Blank cells are not applicable.

Mitchell*Racine School Report*

Grade

*February 2007***Principal:** Brian Colbert**Total Enrollment by Year**

2005-2006:	470
2004-2005:	457
2003-2004:	454
2002-2003:	418
2001-2002:	412
2000-2001:	353
1999-2000:	365
1998-1999:	384
1997-1998:	430

**Enrollment
Demographics**

Asian:	6
African American:	105
Hispanic:	185
Indian:	2
White:	172
% African American:	22.3%
% Minority:	63.4%
Free Lunch Eligible:	61.7%

Attendance

Attendance Rate:	96.2%
Pupils Expelled:	1
Habitual Truants:	8
Truancy Rate:	1.8%
Pupils Suspended:	26
Suspension Rate:	5.7%

Standardized Tests**3rd**

	<u>At/Above Proficient</u>
Reading:	65.1%
Math:	38.1%

4th

	<u>At/Above Proficient</u>
Reading:	71.7%
Language:	66.7%
Math:	53.3%
Science:	55.0%
Social Studies:	71.7%

5th

	<u>At/Above Proficient</u>
Reading:	63.5%
Math:	46.0%

Note: Blank cells are not applicable.

North Park**Racine School Report**

Grade

February 2007

Principal: Patricia Dwyer**Total Enrollment by Year**

2005-2006:	421
2004-2005:	413
2003-2004:	398
2002-2003:	443
2001-2002:	435
2000-2001:	422
1999-2000:	453
1998-1999:	483
1997-1998:	447

**Enrollment
Demographics**

Asian:	4
African American:	45
Hispanic:	38
Indian:	0
White:	334
% African American:	10.7%
% Minority:	20.7%
Free Lunch Eligible:	29.4%

Attendance

Attendance Rate:	95.6%
Pupils Expelled:	1
Habitual Truants:	0
Truancy Rate:	0.0%
Pupils Suspended:	15
Suspension Rate:	3.6%

Standardized Tests**3rd**

	<u>At/Above Proficient</u>
Reading:	84.6%
Math:	72.3%

4th

	<u>At/Above Proficient</u>
Reading:	83.3%
Language:	85.0%
Math:	70.0%
Science:	78.3%
Social Studies:	91.7%

5th

	<u>At/Above Proficient</u>
Reading:	74.5%
Math:	52.7%

Note: Blank cells are not applicable.

O Brown*Racine School Report*

Grade

*February 2007***Principal:** Kathleen Jackson**Total Enrollment by Year**

2005-2006:	455
2004-2005:	443
2003-2004:	466
2002-2003:	562
2001-2002:	553
2000-2001:	588
1999-2000:	566
1998-1999:	543
1997-1998:	543

**Enrollment
Demographics**

Asian:	13
African American:	82
Hispanic:	56
Indian:	0
White:	304
% African American:	18.0%
% Minority:	33.2%
Free Lunch Eligible:	37.9%

Attendance

Attendance Rate:	94.0%
Pupils Expelled:	0
Habitual Truants:	20
Truancy Rate:	5.1%
Pupils Suspended:	35
Suspension Rate:	7.9%

Standardized Tests**3rd**

	<u>At/Above Proficient</u>
Reading:	66.7%
Math:	68.5%

4th

	<u>At/Above Proficient</u>
Reading:	75.9%
Language:	74.1%
Math:	72.2%
Science:	81.5%
Social Studies:	88.9%

5th

	<u>At/Above Proficient</u>
Reading:	65.5%
Math:	54.5%

Note: Blank cells are not applicable.

P-COC/Red Apple*Racine School Report*

Grade

*February 2007***Principal:** Les Hunt**Total Enrollment by Year**

2005-2006:	102
2004-2005:	45
2003-2004:	116
2002-2003:	51
2001-2002:	62
2000-2001:	160
1999-2000:	166
1998-1999:	139
1997-1998:	98

**Enrollment
Demographics**

Asian:	1
African American:	19
Hispanic:	40
Indian:	0
White:	42
% African American:	18.6%
% Minority:	58.8%
Free Lunch Eligible:	0.0%

Attendance

Attendance Rate:	99.8%
Pupils Expelled:	0
Habitual Truants:	0
Truancy Rate:	
Pupils Suspended:	0
Suspension Rate:	0.0%

Standardized Tests**3rd**

	<u>At/Above Proficient</u>
Reading:	
Math:	

4th

	<u>At/Above Proficient</u>
Reading:	
Language:	
Math:	
Science:	
Social Studies:	

5th

	<u>At/Above Proficient</u>
Reading:	
Math:	

Note: Blank cells are not applicable.

Red Apple*Racine School Report*

Grade

*February 2007***Principal:** Les Hunt**Total Enrollment by Year**

2005-2006:	458
2004-2005:	456
2003-2004:	414
2002-2003:	477
2001-2002:	549
2000-2001:	470
1999-2000:	491
1998-1999:	386
1997-1998:	382

**Enrollment
Demographics**

Asian:	8
African American:	124
Hispanic:	99
Indian:	4
White:	223
% African American:	27.1%
% Minority:	51.3%
Free Lunch Eligible:	38.2%

Attendance

Attendance Rate:	94.6%
Pupils Expelled:	0
Habitual Truants:	2
Truancy Rate:	0.7%
Pupils Suspended:	7
Suspension Rate:	1.5%

Standardized Tests**3rd**

	<u>At/Above Proficient</u>
Reading:	58.0%
Math:	56.0%

4th

	<u>At/Above Proficient</u>
Reading:	83.3%
Language:	78.6%
Math:	66.7%
Science:	81.0%
Social Studies:	95.2%

5th

	<u>At/Above Proficient</u>
Reading:	75.0%
Math:	60.0%

Note: Blank cells are not applicable.

Roosevelt*Racine School Report*

Grade

*February 2007***Principal:** Jeff Rasmussen**Total Enrollment by Year**

2005-2006:	439
2004-2005:	435
2003-2004:	428
2002-2003:	469
2001-2002:	424
2000-2001:	491
1999-2000:	433
1998-1999:	423
1997-1998:	402

**Enrollment
Demographics**

Asian:	5
African American:	116
Hispanic:	91
Indian:	2
White:	225
% African American:	26.4%
% Minority:	48.7%
Free Lunch Eligible:	54.5%

Attendance

Attendance Rate:	94.4%
Pupils Expelled:	1
Habitual Truants:	20
Truancy Rate:	4.6%
Pupils Suspended:	71
Suspension Rate:	16.3%

Standardized Tests**3rd**

	<u>At/Above Proficient</u>
Reading:	53.6%
Math:	36.2%

4th

	<u>At/Above Proficient</u>
Reading:	56.7%
Language:	53.3%
Math:	33.3%
Science:	55.0%
Social Studies:	73.3%

5th

	<u>At/Above Proficient</u>
Reading:	70.5%
Math:	50.0%

Note: Blank cells are not applicable.

Schulte*Racine School Report*

Grade

*February 2007***Principal:** Shelly Geiselman Kritek**Total Enrollment by Year**

2005-2006:	411
2004-2005:	393
2003-2004:	392
2002-2003:	415
2001-2002:	400
2000-2001:	434
1999-2000:	429
1998-1999:	469
1997-1998:	445

**Enrollment
Demographics**

Asian:	12
African American:	77
Hispanic:	54
Indian:	4
White:	264
% African American:	18.7%
% Minority:	35.8%
Free Lunch Eligible:	35.2%

Attendance

Attendance Rate:	95.3%
Pupils Expelled:	3
Habitual Truants:	10
Truancy Rate:	2.5%
Pupils Suspended:	15
Suspension Rate:	3.8%

Standardized Tests**3rd**

	<u>At/Above Proficient</u>
Reading:	66.7%
Math:	56.1%

4th

	<u>At/Above Proficient</u>
Reading:	72.5%
Language:	74.5%
Math:	64.7%
Science:	70.6%
Social Studies:	88.2%

5th

	<u>At/Above Proficient</u>
Reading:	76.7%
Math:	66.7%

Note: Blank cells are not applicable.

Wadewitz*Racine School Report*

Grade

*February 2007***Principal:** Warren Baugher**Total Enrollment by Year**

2005-2006:	598
2004-2005:	610
2003-2004:	616
2002-2003:	656
2001-2002:	621
2000-2001:	629
1999-2000:	639
1998-1999:	651
1997-1998:	616

**Enrollment
Demographics**

Asian:	6
African American:	192
Hispanic:	183
Indian:	1
White:	216
% African American:	32.1%
% Minority:	63.9%
Free Lunch Eligible:	62.3%

Attendance

Attendance Rate:	93.5%
Pupils Expelled:	2
Habitual Truants:	20
Truancy Rate:	3.6%
Pupils Suspended:	45
Suspension Rate:	7.4%

Standardized Tests**3rd**

	<u>At/Above Proficient</u>
Reading:	52.4%
Math:	40.5%

4th

	<u>At/Above Proficient</u>
Reading:	72.0%
Language:	57.3%
Math:	60.0%
Science:	70.7%
Social Studies:	80.0%

5th

	<u>At/Above Proficient</u>
Reading:	50.7%
Math:	52.1%

Note: Blank cells are not applicable.

West Ridge*Racine School Report*

Grade

*February 2007***Principal:** Matt Geiger**Total Enrollment by Year**

2005-2006:	447
2004-2005:	451
2003-2004:	436
2002-2003:	423
2001-2002:	424
2000-2001:	441
1999-2000:	456
1998-1999:	445
1997-1998:	446

**Enrollment
Demographics**

Asian:	17
African American:	101
Hispanic:	50
Indian:	4
White:	275
% African American:	22.6%
% Minority:	38.5%
Free Lunch Eligible:	41.3%

Attendance

Attendance Rate:	95.3%
Pupils Expelled:	0
Habitual Truants:	17
Truancy Rate:	3.8%
Pupils Suspended:	25
Suspension Rate:	5.5%

Standardized Tests**3rd**

	<u>At/Above Proficient</u>
Reading:	64.0%
Math:	51.2%

4th

	<u>At/Above Proficient</u>
Reading:	79.6%
Language:	83.3%
Math:	64.8%
Science:	72.2%
Social Studies:	90.7%

5th

	<u>At/Above Proficient</u>
Reading:	73.4%
Math:	48.4%

Note: Blank cells are not applicable.

Wind Point*Racine School Report*

Grade

*February 2007***Principal:** Irene Nahabedian**Total Enrollment by Year**

2005-2006:	274
2004-2005:	236
2003-2004:	286
2002-2003:	295
2001-2002:	290
2000-2001:	280
1999-2000:	326
1998-1999:	318
1997-1998:	313

**Enrollment
Demographics**

Asian:	8
African American:	69
Hispanic:	25
Indian:	1
White:	171
% African American:	25.2%
% Minority:	37.6%
Free Lunch Eligible:	41.9%

Attendance

Attendance Rate:	95.1%
Pupils Expelled:	0
Habitual Truants:	3
Truancy Rate:	1.3%
Pupils Suspended:	4
Suspension Rate:	1.7%

Standardized Tests**3rd**

	<u>At/Above Proficient</u>
Reading:	70.3%
Math:	70.3%

4th

	<u>At/Above Proficient</u>
Reading:	81.3%
Language:	81.3%
Math:	78.1%
Science:	81.3%
Social Studies:	93.8%

5th

	<u>At/Above Proficient</u>
Reading:	78.3%
Math:	69.6%

Note: Blank cells are not applicable.

Winslow*Racine School Report*

Grade

*February 2007***Principal:** Brian ColbertTotal Enrollment by Year

2005-2006:	
2004-2005:	266
2003-2004:	255
2002-2003:	262
2001-2002:	256
2000-2001:	271
1999-2000:	286
1998-1999:	282
1997-1998:	245

Enrollment
Demographics

Asian:
African American:
Hispanic:
Indian:
White:
% African American:
% Minority:
Free Lunch Eligible:

Attendance

Attendance Rate:	92.5%
Pupils Expelled:	6
Habitual Truants:	19
Truancy Rate:	7.6%
Pupils Suspended:	47
Suspension Rate:	17.7%

Standardized Tests3rdAt/Above Proficient

Reading:
Math:

4thAt/Above Proficient

Reading:
Language:
Math:
Science:
Social Studies:

5thAt/Above Proficient

Reading:
Math:

Note: Blank cells are not applicable.