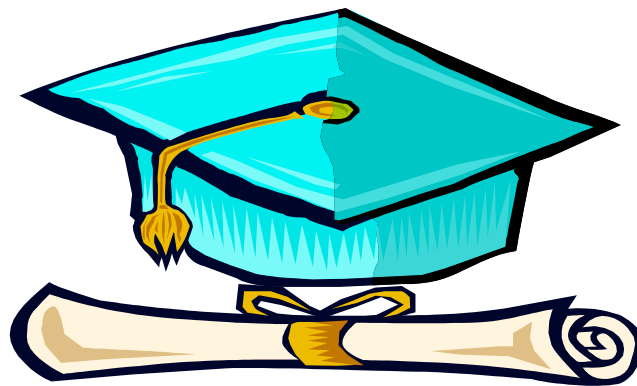


Public, Private and Nonpublic Schools

High School Graduates
2003-04



Public, Private and Nonpublic Schools

*High School Graduates
2003-04*

*Compiled
by
Joanne R. Bobek,
Educational Statistics Associate*

May 2005

Commonwealth of Pennsylvania
Edward G. Rendell, Governor

Department of Education
Francis V. Barnes, Secretary

Bureau of Educational Technology
Kathleen M. Brautigam, Director

Division of Data Services
Gerald W. Hottinger, Chief

The Pennsylvania Department of Education (PDE) does not discriminate in its educational programs, activities or employment practices based on race, color, national origin, sex, sexual orientation, disability, age, religion, ancestry, union membership, or any other legally protected category. This policy is in accordance with state law, including the Pennsylvania Human Relations Act, and with federal law, including Title VI and Title VII of the Civil Rights Act of 1964, Title IX of the Education Amendments of 1972, Section 504 of the Rehabilitation Act of 1973, the Age Discrimination in Employment Act of 1967 and the Americans with Disabilities Act of 1990.

The following persons have been designated to handle inquiries regarding the Pennsylvania Department of Education's non-discrimination policies:

**For Inquiries Concerning Non-Discrimination
In Employment:**

Pennsylvania Department of Education
Equal Employment Opportunity Representative
Bureau of Human Resources
333 Market Street, 11th Floor
Harrisburg, PA 17126-0333
Voice Telephone: (717) 787-4417
Text Telephone: (717) 783-8445
Fax: (717) 783-9348

**For Inquiries Concerning Non-Discrimination in
All Other Pennsylvania Department of Education
Programs and Activities:**

Pennsylvania Department of Education
School Services Unit Director
333 Market Street, 5th Floor
Harrisburg, PA 17126-0333
Voice Telephone: (717) 783-3750
Text Telephone: (717) 783-8445
Fax: (717) 783-6802

Division of Data Services publications are available on the PDE Home Page (www.pde.state.pa.us). If you have any questions about this publication, contact:

Joanne R. Bobek

ra-espdata@state.pa.us

Pennsylvania Department of Education
Division of Data Services
333 Market Street
Harrisburg, PA 17126-0333

Voice Telephone: (717) 783-6752
Fax: (717) 787-3148
Text Telephone TTY: (717) 783-8445

CONTENTS

		Page
Overview	1
Statistical Highlights, 2003-04	2
Table	1. Public, Private and Nonpublic High School Graduates by Race and Gender, 2003-04.....	3
Figure	1. Minority Graduates, Public Versus Private and Nonpublic, 2003-04.....	4
Table	2. Public, Private and Nonpublic High School Graduates, 1994-95 Through 2003-04	5
Table	3. College-Bound Public, Private and Nonpublic High School Graduates by Race and Gender, 2003-04.....	6
Figure	2. College-Bound Public, Private and Nonpublic High School Graduates by Selected Years	7
Figure	3. Post-High School Activities of Public, Private and Nonpublic High School Graduates, 1994-95 and 2003-04	8
Table	4. Public High School Graduates for the United States, Pennsylvania and Contiguous States, 2000-01 and 2003-04	9
Table	5. Special Populations of Public High School Graduates, 2003-04	10
Appendix	A. Public, Private and Nonpublic High School Graduates by Gender and County, 2003-04	A-1
Appendix	B. Public High School Graduates by Race, Gender and Post-High School Activity, 2003-04 ...	B-1
Appendix	C. Private and Nonpublic High School Graduates by Race, Gender and Post-High School Activity, 2003-04	C-1
Appendix	D. Public High School Graduates by Post-High School Activity and County, 2003-04	D-1
Appendix	E. Private and Nonpublic High School Graduates by Post-High School Activity and County, 2003-04.....	E-1
Appendix	F. Glossary	F-1
Appendix	G. Sources	G-1

OVERVIEW

This publication provides a compilation of statistical information covering Pennsylvania high school graduates in public, private and nonpublic schools for the 2003-04 school year. Information is provided on race/ethnicity, gender and intended post-high school activity of graduates, including those who are college-bound. Information is also provided on special populations of the public school graduates: economically disadvantaged, migrant, English language learner and special education.

The source of this data is an annual survey of all Pennsylvania public, private and nonpublic schools having enrollment in grade 12 or secondary ungraded. In the public sector, 598 high schools, 15 comprehensive area vocational-technical schools, 35 charter schools, four consortium-operated alternative high schools and the Scotland School for Veterans Children were surveyed. These public schools had 123,473 graduates. In the private and nonpublic sector, there were 391 high schools with 17,580 graduates. The total number of public, private and nonpublic graduates was 141,053.

For the public schools, the data collection used an individual student report via a web-based system, the Electronic Dropout/Graduate Report (EDGR). For the private and nonpublic schools, the data collection continued to be an aggregate report using a paper form.

During the 2004 calendar year, 8,881 persons, age 19 or less, took the General Educational Development (GED) test in Pennsylvania. Of those, 6,038 passed the test, thereby qualifying to receive the Commonwealth Secondary School Diploma provided they were at least age 18. Individuals less than 18 years old who pass the GED test receive the diploma when they reach age 18. In 2004, there were 4,394 diplomas issued to 18- and 19-year-old recipients.

STATISTICAL HIGHLIGHTS
2003-04

	NUMBER OF GRADUATES	COLLEGE-BOUND	
		Number	%
TOTAL	141,053	104,663	74.2
Public	123,473	88,991	72.1
Private and Nonpublic	17,580	15,672	89.1
Male	70,513	48,643	69.0
Female	70,540	56,020	79.4
American Indian/Alaskan Native . . .	113	77	68.1
Asian/Pacific Islander	3,464	3,000	86.6
Black (Non-Hispanic)	15,687	10,585	67.5
Hispanic	4,511	2,626	58.2
White (Non-Hispanic)	117,278	88,375	75.4

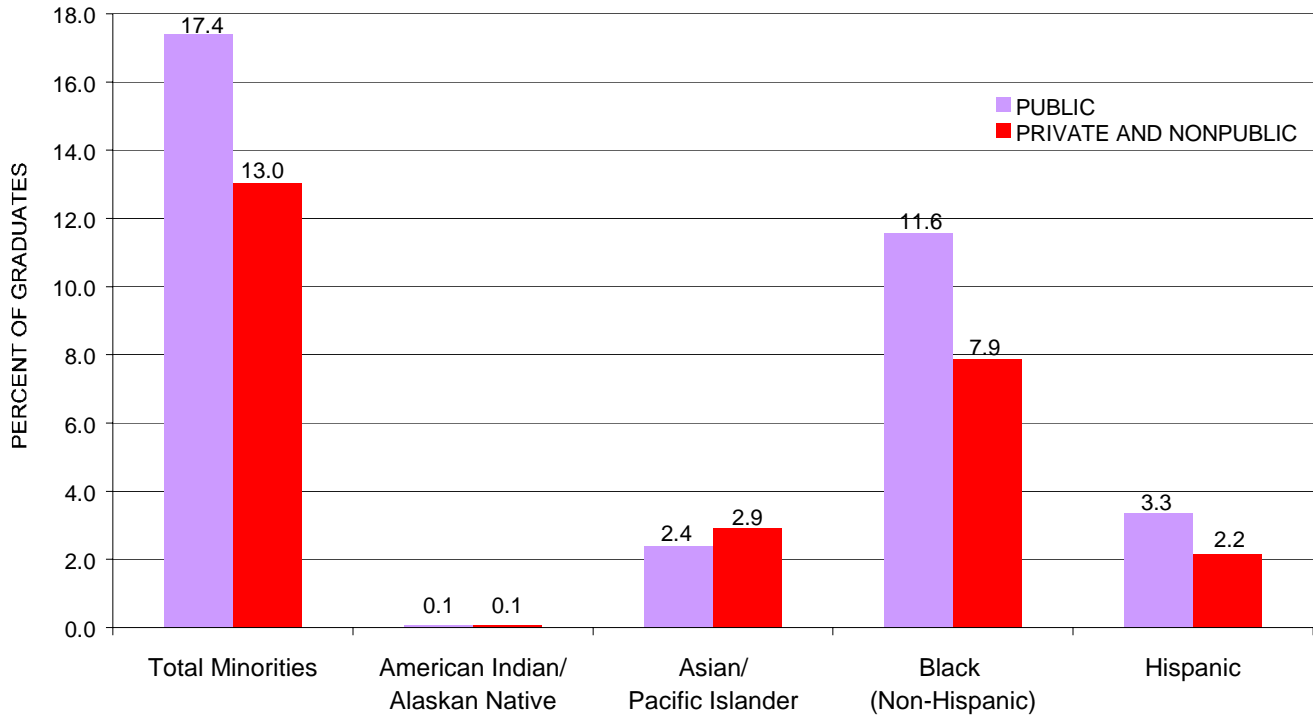
TABLE 1
PUBLIC, PRIVATE AND NONPUBLIC HIGH SCHOOL GRADUATES
BY RACE AND GENDER
2003-04

	TOTAL		PUBLIC		PRIVATE AND NONPUBLIC	
	Male	Female	Male	Female	Male	Female
TOTAL	70,513	70,540	61,742	61,731	8,771	8,809
American Indian/Alaskan Native	58	55	53	47	5	8
Asian/Pacific Islander	1,733	1,731	1,462	1,489	271	242
Black (Non-Hispanic)	7,236	8,451	6,590	7,711	646	740
Hispanic	2,206	2,305	2,019	2,113	187	192
White (Non-Hispanic)	59,280	57,998	51,618	50,371	7,662	7,627

In each of the sectors, "public" and "private and nonpublic," the numbers of male and female graduates were nearly equal. The greatest difference between the male and female graduates occurred in the public sector, in the white category.

Females and males each comprised 50.0% of the total 2003-04 graduates. The percentages of female graduates within the racial/ethnic categories were as follows: American Indian/Alaskan Native, 48.7%; Asian/Pacific Islander, 50.0%; black, 53.9%; Hispanic, 51.1%; and white, 49.5%.

FIGURE 1
 MINORITY GRADUATES
 PUBLIC VERSUS PRIVATE AND NONPUBLIC
 2003-04



Note: Total may not add due to rounding.

Minority graduates comprised 17.4% of the public high school graduates in 2003-04, up from 16.3% in 2002-03. Within the private and nonpublic sector, 13.0% of the graduates were minorities, compared to 12.5% in 2002-03.

In both sectors from 2002-03 to 2003-04, the percentage of black graduates increased, while the percentage of American Indian/Alaskan Native was unchanged. The percentage of Hispanic graduates increased in the public sector and was unchanged in the private and nonpublic sector. The percentage of Asian/Pacific Islander graduates increased slightly in the public sector, and decreased slightly in the private and nonpublic sector.

TABLE 2

PUBLIC, PRIVATE AND NONPUBLIC HIGH SCHOOL GRADUATES
1994-95 THROUGH 2003-04

	TOTAL	PUBLIC		PRIVATE AND NONPUBLIC	
		Number	%	Number	%
1994-95	120,965	104,146	86.1	16,819	13.9
1995-96	122,610	105,981	86.4	16,629	13.6
1996-97	125,856	108,817	86.5	17,039	13.5
1997-98	127,981	110,919	86.7	17,062	13.3
1998-99	129,968	112,632	86.7	17,336	13.3
1999-00	131,436	113,959	86.7	17,477	13.3
2000-01	131,814	114,436	86.8	17,378	13.2
2001-02	132,497	114,943	86.8	17,554	13.2
2002-03	137,632	119,932	87.1	17,700	12.9
2003-04	141,053	123,473	87.5	17,580	12.5

When compared to the total graduates (120,965) in 1994-95, the total number of high school graduates (141,053) in 2003-04 represented a 16.6% increase. The total number of graduates has increased each of the last nine years. During this period, the largest increase was 3.9% from 2001-02 to 2002-03. The smallest increase was 0.3% from 1999-00 to 2000-01.

The 2003-04 public school graduate total (123,473) represented an increase of 18.6% from the total (104,146) in 1994-95. The number of graduates (17,580) in the private and nonpublic sector was a 4.5% increase from the total (16,819) in 1994-95.

Between 1994-95 and 1998-99, there was a steady increase in the percentage of graduates from public schools, and a steady decrease in the percentage from private and nonpublic schools. For the three-year period from 1997-98 to 1999-00, the percentage of graduates in both sectors remained constant. However, in 2000-01, the percentage of graduates from public schools increased by 0.1 percentage point. In each sector, the percentage of graduates remained the same from 2000-01 to 2001-02. In 2002-03 and 2003-04, the percentage of graduates from public schools increased by 0.3 and 0.4 percentage point, respectively.

TABLE 3

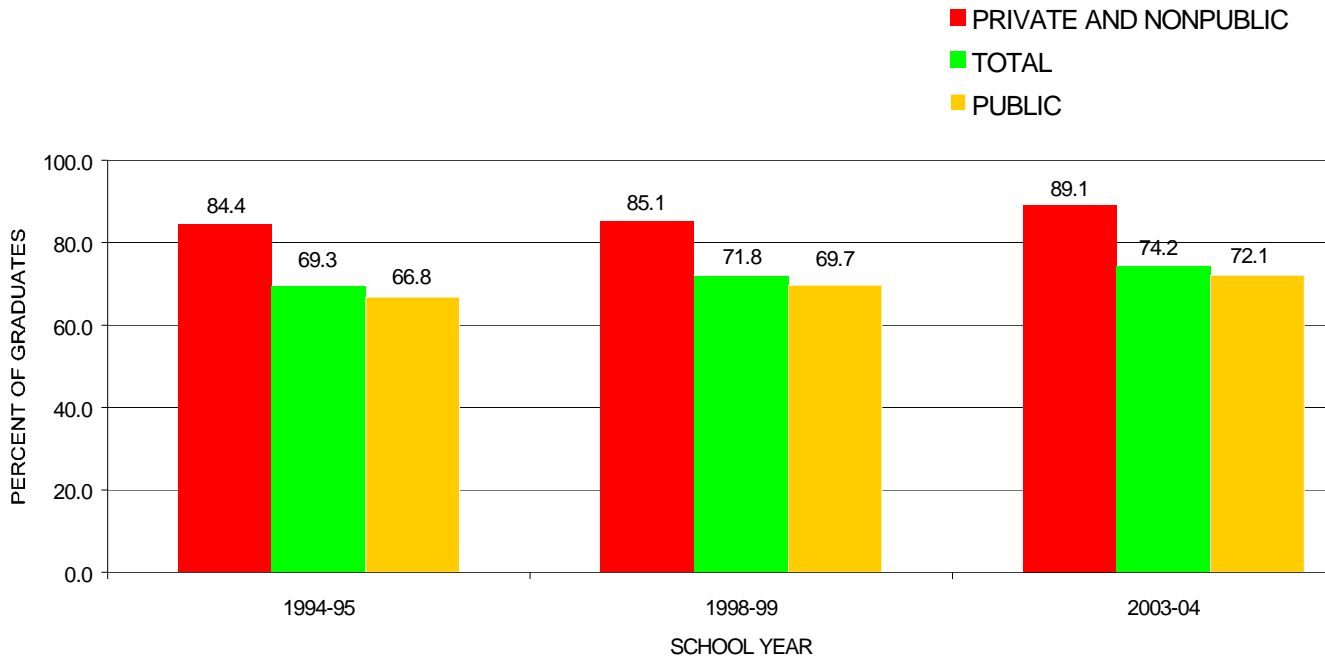
COLLEGE-BOUND PUBLIC, PRIVATE AND NONPUBLIC
HIGH SCHOOL GRADUATES BY RACE AND GENDER
2003-04

	COLLEGE-BOUND GRADUATES					
	Total		Public		Private and Nonpublic	
	Number	%	Number	%	Number	%
TOTAL	104,663	74.2	88,991	72.1	15,672	89.1
Male	48,643	69.0	40,974	66.4	7,669	87.4
Female	56,020	79.4	48,017	77.8	8,003	90.9
American Indian/Alaskan Native	77	68.1	65	65.0	12	92.3
Male	32	55.2	27	50.9	5	100.0
Female	45	81.8	38	80.9	7	87.5
Asian/Pacific Islander	3,000	86.6	2,514	85.2	486	94.7
Male	1,466	84.6	1,209	82.7	257	94.8
Female	1,534	88.6	1,305	87.6	229	94.6
Black (Non-Hispanic)	10,585	67.5	9,351	65.4	1,234	89.0
Male	4,492	62.1	3,934	59.7	558	86.4
Female	6,093	72.1	5,417	70.3	676	91.4
Hispanic	2,626	58.2	2,296	55.6	330	87.1
Male	1,171	53.1	1,013	50.2	158	84.5
Female	1,455	63.1	1,283	60.7	172	89.6
White (Non-Hispanic)	88,375	75.4	74,765	73.3	13,610	89.0
Male	41,482	70.0	34,791	67.4	6,691	87.3
Female	46,893	80.9	39,974	79.4	6,919	90.7

The number of high school graduates planning to attend college increased from 83,776 in 1994-95 to 104,663 in 2003-04. College-bound graduates represented 72.1% of the public school graduates and 89.1% of the private and nonpublic graduates. Females in the public sector (77.8%) and in the private and nonpublic sector (90.9%) were college-bound at a greater rate than males.

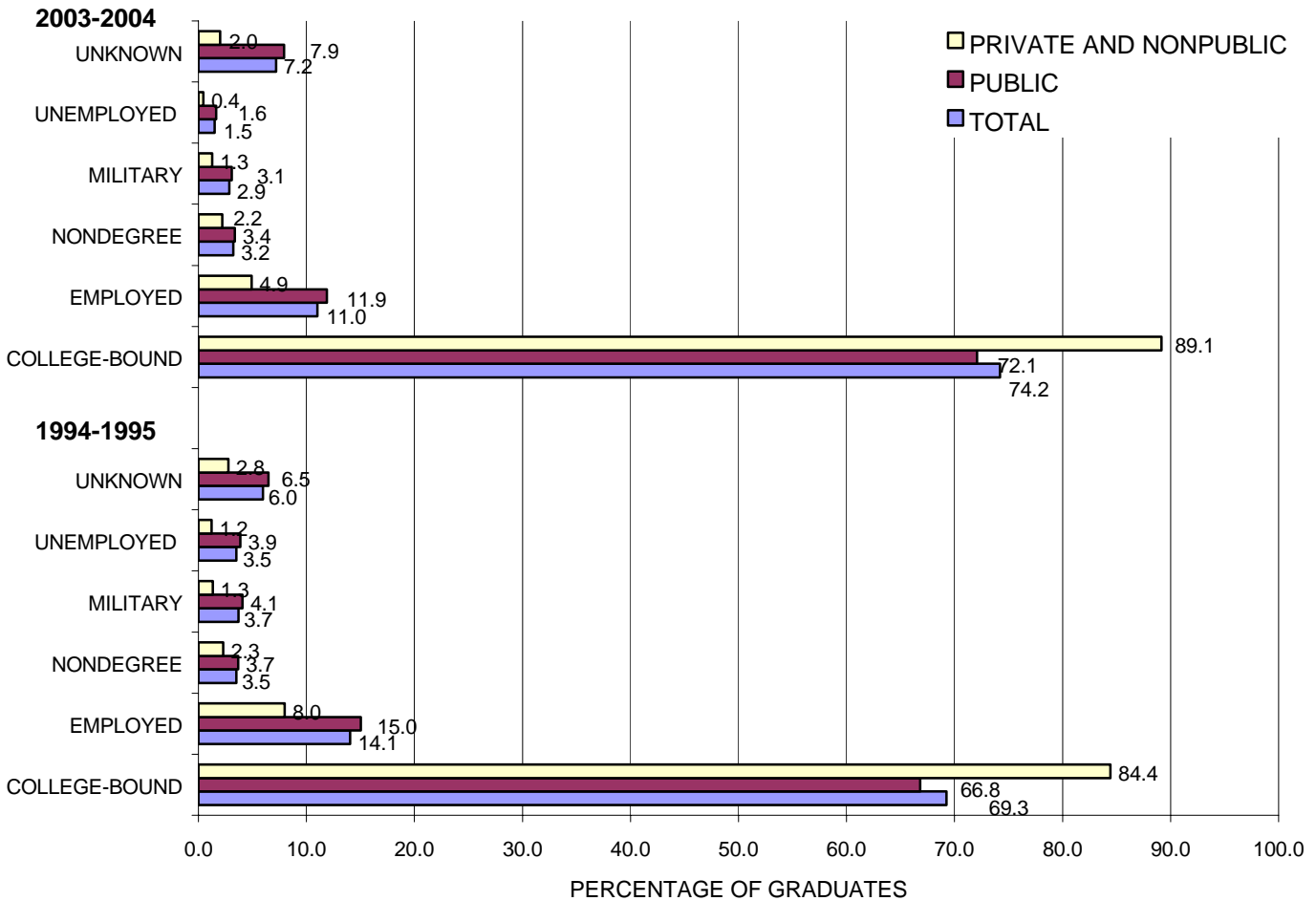
Asian/Pacific Islander females had the highest college-bound percentage; Hispanic males had the lowest percentage. A larger percentage of females than males were college-bound within all racial/ethnic categories, except American Indian/Alaskan Native and Asian/Pacific Islander in the private and nonpublic sector.

FIGURE 2
 COLLEGE-BOUND PUBLIC, PRIVATE AND NONPUBLIC
 HIGH SCHOOL GRADUATES
 BY SELECTED YEARS



In 2003-04, 74.2% of the 141,053 graduates were college-bound, compared to 69.3% of the 120,965 graduates in 1994-95. Of the 123,473 public high school graduates in 2003-04, 72.1% were college-bound, compared to 66.8% of the 104,146 public graduates in 1994-95. Within the private and nonpublic sector in 2003-04, 89.1% of the 17,580 graduates were college-bound, compared to 84.4% of the 16,819 graduates in 1994-95.

FIGURE 3
POST-HIGH SCHOOL ACTIVITIES OF
PUBLIC, PRIVATE AND NONPUBLIC
HIGH SCHOOL GRADUATES
1994-95 AND 2003-04



Note: 1. The employed category contains graduates reported as farm, blue collar, white collar and service workers.
 2. The unemployed category contains graduates reported as unemployed or homemakers.
 3. Total may not add due to rounding.

A comparison of the post-high school activities of 1994-95 and 2003-04 high school graduates showed the college-bound private and nonpublic graduates increased from 84.4% to 89.1%. For the private and nonpublic graduates who were not college-bound, the percentages decreased for all categories except "military."

The college-bound public graduates increased from 66.8% to 72.1%. The public graduates who were not college-bound showed percentage decreases in all categories except "unknown."

TABLE 4

PUBLIC HIGH SCHOOL GRADUATES FOR THE UNITED STATES,
PENNSYLVANIA AND CONTIGUOUS STATES
2000-01 AND 2003-04

	PUBLIC HIGH SCHOOL GRADUATES		
	Actual 2000-01	Estimated 2003-04	% Change 2000-01 to 2003-04
UNITED STATES	2,568,956	2,697,510	+5.0
Delaware	6,614	6,780	+2.5
Maryland	49,222	52,480	+6.6
New Jersey	76,130	85,510	+12.3
New York	141,884	147,260	+3.8
Ohio	111,281	112,830	+1.4
Pennsylvania	114,436	123,473 ^{1/}	+7.9
West Virginia	18,440	16,840	-8.7

^{1/} Actual data was used for Pennsylvania 2003-04 graduates.

Source: *Projections of Education Statistics to 2013*, U.S. Department of Education, National Center for Education Statistics, 2003

Pennsylvania showed a 7.9% increase in the number of graduates from 2000-01 to 2003-04. Of the six contiguous states, five had increases in the number of public high school graduates when comparing actual 2000-01 numbers with the estimated 2003-04 figures. Nationally, the estimated increase was 5.0% for the same period.

TABLE 5
SPECIAL POPULATIONS OF PUBLIC HIGH SCHOOL GRADUATES
2003-04

	ECONOMICALLY DISADVANTAGED	MIGRANT	ENGLISH LANGUAGE LEARNER	SPECIAL EDUCATION
TOTAL	19,219	213	987	14,155
American Indian/ Alaskan Native	23	0	1	21
Asian/ Pacific Islander	599	26	217	145
Black (Non-Hispanic)	5,186	17	83	2,094
Hispanic	1,703	150	408	564
White (Non-Hispanic)	11,708	20	278	11,331

Of the 2003-04 public graduates, the largest special population was the economically disadvantaged category followed by the special education category. These two categories consisted primarily of white individuals; black individuals were next in occurrence. Those graduates in the migrant category were primarily Hispanic.

In the English Language Learner category, Hispanic public graduates were largest numerically, followed by whites and Asian/Pacific Islanders. On a percentage basis, Hispanics (9.9%) predominated, while Asian/Pacific Islanders (7.4%), American Indian/Alaskan Natives (1.0%) and blacks (0.6%) exceeded whites (0.3%).

APPENDIX A

PUBLIC, PRIVATE AND NONPUBLIC HIGH SCHOOL GRADUATES BY GENDER AND COUNTY
2003-04

	TOTAL			PUBLIC			PRIVATE AND NONPUBLIC		
	Total	Male	Female	Total	Male	Female	Total	Male	Female
TOTAL	141.053	70.513	70.540	123.473	61.742	61.731	17.580	8.771	8.809
Adams	1,252	632	620	1,064	532	532	188	100	88
Allegheny	13,541	6,726	6,815	12,118	6,007	6,111	1,423	719	704
Armstrong	854	428	426	850	426	424	4	2	2
Beaver	2,168	1,127	1,041	2,069	1,074	995	99	53	46
Bedford	531	268	263	527	264	263	4	4	0
Berks	4,552	2,213	2,339	4,220	2,056	2,164	332	157	175
Blair	1,518	767	751	1,407	716	691	111	51	60
Bradford	805	399	406	792	392	400	13	7	6
Bucks	7,842	4,004	3,838	6,826	3,480	3,346	1,016	524	492
Butler	2,032	987	1,045	1,985	965	1,020	47	22	25
Cambria	1,738	877	861	1,539	786	753	199	91	108
Cameron	66	33	33	66	33	33	0	0	0
Carbon	674	342	332	674	342	332	0	0	0
Centre	1,149	587	562	1,138	582	556	11	5	6
Chester	5,369	2,752	2,617	4,479	2,243	2,236	890	509	381
Clarion	541	266	275	536	266	270	5	0	5
Clearfield	1,137	538	599	1,070	512	558	67	26	41
Clinton	401	216	185	399	216	183	2	0	2
Columbia	879	424	455	859	416	443	20	8	12
Crawford	806	425	381	782	409	373	24	16	8
Cumberland	2,351	1,190	1,161	2,101	1,083	1,018	250	107	143
Dauphin	2,864	1,412	1,452	2,507	1,237	1,270	357	175	182
Delaware	6,694	3,221	3,473	5,043	2,491	2,552	1,651	730	921
Elk	481	226	255	403	191	212	78	35	43
Erie	3,406	1,714	1,692	2,910	1,451	1,459	496	263	233
Fayette	1,343	681	662	1,269	643	626	74	38	36
Forest	58	26	32	55	25	30	3	1	2
Franklin	1,412	740	672	1,230	641	589	182	99	83
Fulton	157	80	77	155	79	76	2	1	1
Greene	455	225	230	452	224	228	3	1	2
Huntingdon	487	215	272	433	208	225	54	7	47
Indiana	918	468	450	913	468	445	5	0	5
Jefferson	535	277	258	521	271	250	14	6	8
Juniata	254	129	125	254	129	125	0	0	0
Lackawanna	2,406	1,229	1,177	1,972	1,009	963	434	220	214
Lancaster	5,275	2,650	2,625	4,605	2,322	2,283	670	328	342
Lawrence	1,068	526	542	1,068	526	542	0	0	0
Lebanon	1,268	616	652	1,187	573	614	81	43	38
Lehigh	3,441	1,765	1,676	3,154	1,633	1,521	287	132	155
Luzerne	3,610	1,864	1,746	3,056	1,591	1,465	554	273	281
Lycoming	1,244	648	596	1,203	625	578	41	23	18
McKean	573	292	281	572	292	280	1	0	1
Mercer	1,470	785	685	1,405	749	656	65	36	29
Mifflin	421	224	197	393	210	183	28	14	14
Monroe	2,203	1,084	1,119	2,148	1,062	1,086	55	22	33
Montgomery	9,885	4,949	4,936	7,394	3,772	3,622	2,491	1,177	1,314
Montour	196	107	89	196	107	89	0	0	0
Northampton	3,504	1,750	1,754	3,075	1,540	1,535	429	210	219
Northumberland	1,084	560	524	965	499	466	119	61	58
Perry	501	266	235	472	240	232	29	26	3
Philadelphia	15,219	7,277	7,942	11,250	5,205	6,045	3,969	2,072	1,897
Pike	373	172	201	373	172	201	0	0	0
Potter	223	114	109	220	114	106	3	0	3
Schuylkill	1,653	844	809	1,466	745	721	187	99	88
Snyder	427	197	230	416	195	221	11	2	9
Somerset	952	480	472	928	471	457	24	9	15
Sullivan	66	40	26	59	35	24	7	5	2
Susquehanna	582	296	286	582	296	286	0	0	0
Tioga	481	238	243	462	230	232	19	8	11
Union	315	177	138	315	177	138	0	0	0
Venango	748	399	349	718	386	332	30	13	17
Warren	510	275	235	498	266	232	12	9	3
Washington	2,148	1,099	1,049	2,135	1,091	1,044	13	8	5
Wayne	651	329	322	643	325	318	8	4	4
Westmoreland	4,311	2,213	2,098	4,098	2,076	2,022	213	137	76
Wyoming	354	198	156	353	197	156	1	1	0
York	4,621	2,235	2,386	4,446	2,153	2,293	175	82	93

APPENDIX B

PUBLIC HIGH SCHOOL GRADUATES BY RACE, GENDER AND POST-HIGH SCHOOL ACTIVITY
2003-04

	TOTAL			AMERICAN INDIAN/ALASKAN NATIVE		ASIAN/PACIFIC ISLANDER		BLACK (NON-HISPANIC)		HISPANIC		WHITE (NON-HISPANIC)	
	Total	Male	Female	Male	Female	Male	Female	Male	Female	Male	Female	Male	Female
TOTAL GRADUATES	123,473	61,742	61,731	53	47	1,462	1,489	6,590	7,711	2,019	2,113	51,618	50,371
TOTAL COLLEGE-BOUND	88,991	40,974	48,017	27	38	1,209	1,305	3,934	5,417	1,013	1,283	34,791	39,974
PENNSYLVANIA	74,675	34,343	40,332	22	32	1,006	1,082	3,309	4,544	902	1,137	29,104	33,537
Community College	17,643	7,721	9,922	4	8	247	241	1,359	1,893	358	529	5,753	7,251
Private 2-year College	2,200	1,044	1,156	0	1	15	15	144	152	49	45	836	943
State University	18,284	7,935	10,349	6	6	144	169	742	1,036	166	195	6,877	8,943
State-Related Commonwealth University	15,466	8,089	7,377	4	4	340	350	471	676	127	138	7,147	6,209
Private 4-year College or University	16,047	6,838	9,209	6	10	240	298	351	536	117	167	6,124	8,198
Other Postsecondary School (AST or ASB Degree)	5,035	2,716	2,319	2	3	20	9	242	251	85	63	2,367	1,993
OUTSIDE PENNSYLVANIA	14,316	6,631	7,685	5	6	203	223	625	873	111	146	5,687	6,437
2-year College	1,387	656	731	0	0	6	2	108	97	24	38	518	594
4-year College or University	12,929	5,975	6,954	5	6	197	221	517	776	87	108	5,169	5,843
TOTAL OTHER ACTIVITY	34,482	20,768	13,714	26	9	253	184	2,656	2,294	1,006	830	16,827	10,397
Other Postsecondary School (Nondegree)	3,397	1,542	1,855	2	1	19	22	240	255	91	107	1,190	1,470
Other Postsecondary School (Outside PA)	780	497	283	0	1	7	5	54	44	19	19	417	214
Farm Worker	280	221	59	0	0	1	0	5	2	1	6	214	51
Homemaker	420	16	404	0	0	0	0	6	54	1	27	9	323
Military	3,804	3,122	682	8	1	31	7	208	82	101	55	2,774	537
White Collar Worker	1,455	532	923	1	2	4	9	83	134	24	43	420	735
Blue Collar Worker	7,669	6,149	1,520	4	0	54	26	430	245	198	85	5,463	1,164
Service Worker	5,274	2,231	3,043	6	3	22	22	251	282	146	144	1,806	2,592
Unemployed	1,605	919	686	0	0	9	6	113	105	42	26	755	549
Unknown	9,798	5,539	4,259	5	1	106	87	1,266	1,091	383	318	3,779	2,762

APPENDIX C

PRIVATE AND NONPUBLIC HIGH SCHOOL GRADUATES BY RACE, GENDER AND POST-HIGH SCHOOL ACTIVITY
2003-04

	TOTAL			AMERICAN INDIAN/ALASKAN NATIVE		ASIAN/PACIFIC ISLANDER		BLACK (NON-HISPANIC)		HISPANIC		WHITE (NON-HISPANIC)	
	Total	Male	Female	Male	Female	Male	Female	Male	Female	Male	Female	Male	Female
TOTAL GRADUATES	17,580	8,771	8,809	5	8	271	242	646	740	187	192	7,662	7,627
TOTAL COLLEGE-BOUND	15,672	7,669	8,003	5	7	257	229	558	676	158	172	6,691	6,919
PENNSYLVANIA	11,375	5,551	5,824	3	3	141	133	378	475	101	138	4,928	5,075
Community College	1,802	860	942	1	0	11	7	81	93	25	35	742	807
Private 2-year College	188	85	103	0	1	1	2	12	6	1	3	71	91
State University	1,833	871	962	1	1	11	12	86	112	18	15	755	822
State-Related Commonwealth University	2,109	1,108	1,001	0	0	47	37	67	89	14	19	980	856
Private 4-year College or University	5,184	2,497	2,687	1	1	67	74	128	162	37	62	2,264	2,388
Other Postsecondary School (AST or ASB Degree)	259	130	129	0	0	4	1	4	13	6	4	116	111
OUTSIDE PENNSYLVANIA	4,297	2,118	2,179	2	4	116	96	180	201	57	34	1,763	1,844
2-year College	125	70	55	0	0	3	3	11	6	2	3	54	43
4-year College or University	4,172	2,048	2,124	2	4	113	93	169	195	55	31	1,709	1,801
TOTAL OTHER ACTIVITY	1,908	1,102	806	0	1	14	13	88	64	29	20	971	708
Other Postsecondary School (Nondegree)	267	124	143	0	0	0	2	6	8	3	0	115	133
Other Postsecondary School (Outside PA)	119	62	57	0	0	2	0	3	4	5	1	52	52
Farm Worker	25	22	3	0	0	0	0	0	0	0	0	22	3
Homemaker	25	0	25	0	0	0	1	0	2	0	0	0	22
Military	224	186	38	0	1	4	0	17	3	4	3	161	31
White Collar Worker	145	42	103	0	0	0	1	0	6	2	4	40	92
Blue Collar Worker	430	330	100	0	0	2	1	21	12	4	0	303	87
Service Worker	268	138	130	0	0	1	0	11	3	5	2	121	125
Unemployed	54	33	21	0	0	0	0	1	1	0	2	32	18
Unknown	351	165	186	0	0	5	8	29	25	6	8	125	145

APPENDIX D

PUBLIC HIGH SCHOOL GRADUATES BY POST-HIGH SCHOOL ACTIVITY AND COUNTY (PART A)
2003-04

	TOTAL GRADUATES	TOTAL COLLEGE BOUND	PENNSYLVANIA						OUTSIDE PENNSYLVANIA	
			Community College	Private Two-Year College	State University	State-Related University	Private Four-Year College or University	Other Postsec (AST/ASB degree)	Two-Year College	Four-Year College or University
TOTAL	123,473	88,991	17,643	2,200	18,284	15,466	16,047	5,035	1,387	12,929
Adams	1,064	644	105	25	136	70	129	79	10	90
Allegheny	12,118	9,793	2,079	109	1,507	1,656	1,858	539	52	1,993
Armstrong	850	593	114	0	191	108	94	52	2	32
Beaver	2,069	1,532	350	4	228	287	298	116	14	235
Bedford	527	301	9	2	46	74	44	44	53	29
Berks	4,220	2,994	539	59	884	429	550	214	29	290
Blair	1,407	857	26	47	168	299	175	63	19	60
Bradford	792	474	21	35	170	67	79	20	34	48
Bucks	6,826	5,441	1,611	223	969	627	939	99	44	929
Butler	1,985	1,609	450	35	283	264	270	93	12	202
Cambria	1,539	1,025	112	19	233	285	189	119	9	59
Cameron	66	43	0	0	13	22	2	3	1	2
Carbon	674	462	158	8	79	66	79	30	4	38
Centre	1,138	831	3	3	92	472	77	45	7	132
Chester	4,479	3,684	420	58	746	683	617	144	60	956
Clarion	536	358	31	0	174	54	39	40	1	19
Clearfield	1,070	661	2	12	221	216	76	93	5	36
Clinton	399	232	3	5	86	80	18	20	1	19
Columbia	859	585	117	9	204	77	109	21	3	45
Crawford	782	516	11	5	159	78	118	70	5	70
Cumberland	2,101	1,670	397	40	458	199	260	46	18	252
Dauphin	2,507	1,850	666	25	300	246	255	98	14	246
Delaware	5,043	3,837	958	55	561	556	835	162	25	685
Elk	403	286	14	12	85	105	40	6	4	20
Erie	2,910	2,043	15	130	725	295	376	177	36	289
Fayette	1,269	755	66	2	205	160	102	116	8	96
Forest	55	35	1	0	14	6	7	4	1	2
Franklin	1,230	706	17	7	168	139	86	49	114	126
Fulton	155	87	7	0	15	20	15	2	21	7
Greene	452	287	8	3	42	45	66	57	6	60
Huntingdon	433	234	1	22	51	50	39	34	13	24
Indiana	913	630	47	26	235	116	87	71	7	41
Jefferson	521	326	8	1	153	46	40	56	2	20
Juniata	254	153	38	5	34	14	27	27	1	7
Lackawanna	1,972	1,461	50	159	231	270	528	53	19	151
Lancaster	4,605	2,922	356	175	898	327	470	230	35	431
Lawrence	1,068	772	78	0	205	95	166	74	3	151
Lebanon	1,187	807	171	25	162	104	159	84	8	94
Lehigh	3,154	2,418	716	30	446	392	417	67	19	331
Luzerne	3,056	2,262	816	24	287	396	516	61	16	146
Lycoming	1,203	841	4	17	292	287	134	13	8	86
McKean	572	361	2	0	89	118	56	35	16	45
Mercer	1,405	924	43	28	229	167	164	99	14	180
Mifflin	393	236	20	1	60	66	36	34	3	16
Monroe	2,148	1,542	352	59	381	216	234	37	42	221
Montgomery	7,394	6,021	1,352	88	935	1,012	1,164	114	41	1,315
Montour	196	162	12	2	42	53	23	2	1	27
Northampton	3,075	2,309	774	48	331	385	401	56	20	294
Northumberland	965	609	35	3	224	124	115	82	2	24
Perry	472	276	112	1	56	19	54	21	1	12
Philadelphia	11,250	7,162	2,733	195	1,105	1,232	828	251	125	693
Pike	373	317	15	5	68	24	61	11	82	51
Potter	220	124	4	0	44	12	35	7	6	16
Schuylkill	1,466	1,007	196	17	233	174	207	118	8	54
Snyder	416	259	37	1	48	69	51	23	2	28
Somerset	928	589	70	12	104	136	82	77	46	62
Sullivan	59	33	1	0	5	11	9	2	2	3
Susquehanna	582	368	42	37	77	42	91	10	38	31
Tioga	462	284	13	5	99	50	34	10	39	34
Union	315	230	3	5	64	63	54	3	0	38
Venango	718	440	3	23	165	103	74	25	5	42
Warren	498	288	3	5	77	58	50	7	35	53
Washington	2,135	1,635	129	42	372	186	413	154	11	328
Wayne	643	422	37	25	107	85	115	3	5	45
Westmoreland	4,098	3,267	676	36	571	793	611	208	16	356
Wyoming	353	282	30	36	52	22	102	9	7	24
York	4,446	2,827	354	110	590	464	598	246	77	388

APPENDIX D

PUBLIC HIGH SCHOOL GRADUATES BY POST-HIGH SCHOOL ACTIVITY AND COUNTY (PART B)
2003-04

	TOTAL OTHER ACTIVITY	OTHER POST- SECONDARY (NON- DEGREE)	FARM WORKER	HOME- MAKER	MILITARY	WHITE COLLAR	BLUE COLLAR	SERVICE WORKER	UN- EMPLOYED	UN- KNOWN
TOTAL	34,482	4,177	280	420	3,804	1,455	7,669	5,274	1,605	9,798
Adams	420	33	12	0	47	11	55	34	27	201
Allegheny	2,325	347	2	23	265	71	423	316	32	846
Armstrong	257	20	0	2	18	0	103	72	4	38
Beaver	537	117	2	3	72	6	114	64	42	117
Bedford	226	37	8	7	23	9	51	38	12	41
Berks	1,226	192	11	8	140	49	240	325	106	155
Blair	550	103	14	6	66	24	97	116	27	97
Bradford	318	19	16	5	54	10	58	71	11	74
Bucks	1,385	218	9	3	148	74	385	177	32	339
Butler	376	34	12	8	59	16	91	65	2	89
Cambria	514	57	5	12	52	6	182	86	40	74
Cameron	23	1	0	0	5	0	6	5	5	1
Carbon	212	13	1	4	36	7	55	28	5	63
Centre	307	16	5	4	47	17	62	103	4	49
Chester	795	113	2	6	73	35	167	134	33	232
Clarion	178	13	2	4	18	2	50	56	12	21
Clearfield	409	63	2	5	43	21	88	64	36	87
Clinton	167	12	10	9	24	10	42	23	16	21
Columbia	274	25	4	4	32	16	76	53	16	48
Crawford	266	24	2	9	39	6	80	55	14	37
Cumberland	431	53	10	10	70	26	81	62	28	91
Dauphin	657	68	3	5	78	63	154	112	22	152
Delaware	1,206	183	0	5	76	35	303	144	2	458
Elk	117	6	0	6	13	20	58	6	5	3
Erie	867	112	9	5	157	58	165	196	26	139
Fayette	514	51	5	23	44	22	99	84	37	149
Forest	20	3	0	1	1	0	5	4	1	5
Franklin	524	33	9	2	58	51	128	63	60	120
Fulton	68	22	0	1	8	3	16	16	0	2
Greene	165	13	0	7	17	5	35	34	7	47
Huntingdon	199	21	2	8	20	6	54	33	2	53
Indiana	283	49	3	9	29	11	74	40	31	37
Jefferson	195	29	3	3	30	3	59	9	26	33
Juniata	101	17	3	2	7	2	46	13	2	9
Lackawanna	511	40	0	11	50	6	158	117	42	87
Lancaster	1,683	201	21	20	128	55	364	261	91	542
Lawrence	296	38	4	6	36	22	45	58	28	59
Lebanon	380	50	8	5	58	12	92	83	6	66
Lehigh	736	41	0	7	97	23	190	87	19	272
Luzerne	794	75	1	7	94	33	129	118	30	307
Lycoming	362	23	3	3	94	13	63	94	35	34
McKean	211	39	1	3	31	4	35	39	25	34
Mercer	481	46	3	8	52	11	138	58	35	130
Mifflin	157	18	2	2	16	9	16	13	55	26
Monroe	606	37	6	4	95	15	85	43	1	320
Montgomery	1,373	130	2	14	138	46	425	163	34	421
Montour	34	2	1	1	4	3	4	7	0	12
Northampton	766	42	9	11	68	17	107	87	5	420
Northumberland	356	27	2	5	46	20	93	84	70	9
Perry	196	26	5	1	25	9	82	11	18	19
Philadelphia	4,088	532	11	37	183	199	510	339	147	2,130
Pike	56	17	0	0	16	7	10	5	0	1
Potter	96	3	2	0	16	5	46	2	9	13
Schuylkill	459	63	4	5	77	43	147	76	8	36
Snyder	157	14	0	5	15	0	70	22	3	28
Somerset	339	29	5	6	56	10	89	69	12	63
Sullivan	26	3	0	0	14	1	4	1	0	3
Susquehanna	214	22	7	2	28	3	58	53	4	37
Tioga	178	9	5	7	34	8	63	17	8	27
Union	85	4	0	1	8	5	35	15	1	16
Venango	278	45	2	3	51	16	66	25	23	47
Warren	210	32	0	0	40	11	60	19	4	44
Washington	500	75	2	8	67	7	141	25	13	162
Wayne	221	50	2	1	44	6	35	34	1	48
Westmoreland	831	114	3	13	84	34	203	137	45	198
Wyoming	71	3	0	1	13	5	18	4	2	25
York	1,619	210	3	14	157	102	386	407	106	234

APPENDIX E

PRIVATE AND NONPUBLIC HIGH SCHOOL GRADUATES BY POST-HIGH SCHOOL ACTIVITY AND COUNTY (PART A)
2003-04

	TOTAL GRADUATES	TOTAL COLLEGE BOUND	PENNSYLVANIA						OUTSIDE PENNSYLVANIA	
			Community College	Private Two-Year College	State University	State-Related University	Private Four-Year College or University	Other Postsec (AST/ASB degree)	Two-Year College	Four-Year College or University
TOTAL	17,580	15,672	1,802	188	1,833	2,109	5,184	259	125	4,172
Adams	188	125	13	4	23	14	27	6	8	30
Allegheny	1,423	1,308	128	5	135	141	500	23	1	375
Armstrong	4	3	0	0	0	0	1	1	0	1
Beaver	99	88	10	5	11	8	27	0	1	26
Bedford	4	3	0	0	2	0	1	0	0	0
Berks	332	283	17	2	44	32	87	8	1	92
Blair	111	97	0	7	23	22	31	2	4	8
Bradford	13	8	4	0	1	0	1	0	1	1
Bucks	1,016	948	132	7	72	134	314	6	3	280
Butler	47	37	11	3	6	0	14	1	0	2
Cambria	199	171	5	1	45	51	48	5	2	14
Cameron	0	0	0	0	0	0	0	0	0	0
Carbon	0	0	0	0	0	0	0	0	0	0
Centre	11	8	0	0	4	0	3	0	0	1
Chester	890	828	32	3	110	104	232	5	10	332
Clarion	5	0	0	0	0	0	0	0	0	0
Clearfield	67	59	0	0	11	16	21	3	3	5
Clinton	2	1	1	0	0	0	0	0	0	0
Columbia	20	14	2	0	1	1	7	0	1	2
Crawford	24	12	1	0	2	0	3	0	0	6
Cumberland	250	226	40	0	26	30	63	0	0	67
Dauphin	357	327	66	13	44	52	78	1	2	71
Delaware	1,651	1,538	169	31	200	222	589	21	6	300
Elk	78	71	0	4	21	26	13	0	1	6
Erie	496	454	1	20	71	110	121	4	0	127
Fayette	74	61	10	0	14	8	19	2	0	8
Forest	3	3	1	0	0	0	0	2	0	0
Franklin	182	149	0	1	5	7	21	2	10	103
Fulton	2	0	0	0	0	0	0	0	0	0
Greene	3	0	0	0	0	0	0	0	0	0
Huntingdon	54	43	0	0	0	0	2	0	5	36
Indiana	5	5	1	0	1	0	0	0	1	2
Jefferson	14	7	1	0	3	0	2	1	0	0
Juniata	0	0	0	0	0	0	0	0	0	0
Lackawanna	434	404	10	15	35	53	199	2	3	87
Lancaster	670	474	49	16	69	36	128	21	10	145
Lawrence	0	0	0	0	0	0	0	0	0	0
Lebanon	81	71	16	0	14	12	11	2	0	16
Lehigh	287	260	38	0	29	32	97	2	3	59
Luzerne	554	515	75	0	54	71	206	2	0	107
Lycoming	41	34	0	0	7	7	10	2	0	8
McKean	1	0	0	0	0	0	0	0	0	0
Mercer	65	54	0	0	9	5	23	0	0	17
Mifflin	28	12	0	1	3	0	3	0	0	5
Monroe	55	53	7	0	5	6	21	0	1	13
Montgomery	2,491	2,386	160	3	183	266	761	6	6	1,001
Montour	0	0	0	0	0	0	0	0	0	0
Northampton	429	403	81	3	49	44	131	2	2	91
Northumberland	119	87	3	0	24	13	28	1	3	15
Perry	29	23	2	0	2	0	4	0	3	12
Philadelphia	3,969	3,424	669	39	375	494	1,150	102	29	566
Pike	0	0	0	0	0	0	0	0	0	0
Potter	3	2	0	0	0	0	1	0	0	1
Schuylkill	187	164	22	0	48	16	59	9	0	10
Snyder	11	7	0	0	0	3	2	0	0	2
Somerset	24	19	4	0	2	5	2	5	0	1
Sullivan	7	0	0	0	0	0	0	0	0	0
Susquehanna	0	0	0	0	0	0	0	0	0	0
Tioga	19	10	0	0	5	2	0	0	2	1
Union	0	0	0	0	0	0	0	0	0	0
Venango	30	29	3	1	2	2	12	1	0	8
Warren	12	6	0	0	1	0	2	1	1	1
Washington	13	11	2	0	0	7	2	0	0	0
Wayne	8	7	1	0	2	0	0	0	0	4
Westmoreland	213	197	9	2	22	27	49	1	1	86
Wyoming	1	1	0	0	0	0	1	0	0	0
York	175	142	6	2	18	30	57	7	1	21

APPENDIX E

PRIVATE AND NONPUBLIC HIGH SCHOOL GRADUATES BY POST-HIGH SCHOOL ACTIVITY AND COUNTY (PART B)
2003-04

	TOTAL OTHER ACTIVITY	OTHER POST- SECONDARY (NON- DEGREE)	FARM WORKER	HOME- MAKER	MILITARY	WHITE COLLAR	BLUE COLLAR	SERVICE WORKER	UN- EMPLOYED	UN- KNOWN
TOTAL	1,908	386	25	25	224	145	430	268	54	351
Adams	63	5	0	1	10	1	12	19	6	9
Allegheny	115	56	0	0	10	7	7	5	3	27
Armstrong	1	0	0	0	0	0	0	1	0	0
Beaver	11	0	0	1	0	1	3	2	1	3
Bedford	1	0	0	0	1	0	0	0	0	0
Berks	49	5	3	3	9	2	15	8	2	2
Blair	14	2	0	0	2	1	2	7	0	0
Bradford	5	1	1	0	0	1	0	2	0	0
Bucks	68	13	0	0	2	1	12	8	2	30
Butler	10	0	1	0	4	0	3	1	0	1
Cambria	28	4	0	0	4	1	2	0	1	16
Cameron	0	0	0	0	0	0	0	0	0	0
Carbon	0	0	0	0	0	0	0	0	0	0
Centre	3	0	0	0	0	0	0	3	0	0
Chester	62	17	3	2	3	1	10	5	1	20
Clarion	5	0	0	1	1	3	0	0	0	0
Clearfield	8	1	0	1	0	0	1	2	0	3
Clinton	1	1	0	0	0	0	0	0	0	0
Columbia	6	1	0	0	0	1	3	0	0	1
Crawford	12	0	1	0	1	0	8	1	0	1
Cumberland	24	3	0	0	4	1	8	1	0	7
Dauphin	30	6	0	1	7	0	1	0	0	15
Delaware	113	29	0	0	14	10	22	10	0	28
Elk	7	1	0	0	0	0	5	0	0	1
Erie	42	12	0	0	10	1	3	9	4	3
Fayette	13	11	0	0	0	0	2	0	0	0
Forest	0	0	0	0	0	0	0	0	0	0
Franklin	33	2	2	5	3	1	5	12	2	1
Fulton	2	0	1	0	0	0	1	0	0	0
Greene	3	2	0	0	0	0	0	1	0	0
Huntingdon	11	1	1	0	0	4	0	1	0	4
Indiana	0	0	0	0	0	0	0	0	0	0
Jefferson	7	1	0	0	0	0	3	2	1	0
Juniata	0	0	0	0	0	0	0	0	0	0
Lackawanna	30	7	0	1	3	0	10	1	0	8
Lancaster	196	19	8	1	4	31	74	36	0	23
Lawrence	0	0	0	0	0	0	0	0	0	0
Lebanon	10	0	0	0	1	0	2	3	0	4
Lehigh	27	2	0	0	10	0	5	1	6	3
Luzerne	39	4	0	0	8	2	16	3	0	6
Lycoming	7	0	0	0	3	0	2	2	0	0
McKean	1	0	0	0	0	1	0	0	0	0
Mercer	11	1	0	1	2	0	2	1	0	4
Mifflin	16	0	3	0	0	0	11	1	1	0
Monroe	2	1	0	0	0	0	0	0	1	0
Montgomery	105	38	0	2	11	2	25	18	0	9
Montour	0	0	0	0	0	0	0	0	0	0
Northampton	26	6	0	0	3	1	4	6	0	6
Northumberland	32	2	0	0	4	1	13	5	0	7
Perry	6	0	0	0	4	0	0	0	0	2
Philadelphia	545	115	0	5	67	67	118	68	17	88
Pike	0	0	0	0	0	0	0	0	0	0
Potter	1	0	0	0	0	0	0	0	1	0
Schuylkill	23	9	0	0	7	0	1	4	0	2
Snyder	4	0	0	0	1	0	0	0	0	3
Somerset	5	0	1	0	0	0	0	3	0	1
Sullivan	7	0	0	0	3	1	1	1	0	1
Susquehanna	0	0	0	0	0	0	0	0	0	0
Tioga	9	0	0	0	0	0	3	2	1	3
Union	0	0	0	0	0	0	0	0	0	0
Venango	1	0	0	0	0	0	0	0	1	0
Warren	6	0	0	0	1	0	2	0	1	2
Washington	2	0	0	0	1	0	0	1	0	0
Wayne	1	0	0	0	0	0	0	0	0	1
Westmoreland	16	3	0	0	2	2	3	2	0	4
Wyoming	0	0	0	0	0	0	0	0	0	0
York	33	5	0	0	4	0	10	10	2	2

APPENDIX F

GLOSSARY

- ASB AND/OR AST DEGREE** - An award granted by a specialized associate degree-granting institution that is authorized to award the Associate in Specialized Business (ASB) and/or the Associate in Specialized Technology (AST) degrees for certain approved programs.
- CHARTER SCHOOL** - An independent public school established and operated under a charter from the local board of school directors and in which students are enrolled or attend. A charter school must be organized as a public nonprofit corporation. Charter schools are exempt from most state mandates, except those insuring the health, safety and civil rights of students.
- COLLEGE-BOUND GRADUATE** - A high school graduate planning to enroll in a two- or four-year degree-granting college or university or a specialized associate degree-granting institution.
- COMMONWEALTH SECONDARY SCHOOL DIPLOMA** - A diploma issued by the Department of Education to Pennsylvania residents who successfully passed the GED test, or who completed one year or 30 semester hours of college work.
- COMPREHENSIVE AREA VOCATIONAL-TECHNICAL SCHOOL (AVTS)** - A school that enrolls secondary students and provides a total educational program and services for both specialized career and technical education and academic education.
- CONSORTIUM-OPERATED ALTERNATIVE HIGH SCHOOL** - A school formed as a result of a special program jointure, which enrolls high-risk students, or students who previously dropped out. A special program jointure is an entity established by the boards of school directors in two or more school districts, with approval of the Pennsylvania Department of Education, under Sections 1701-1709 of the Public School Code of 1949, as amended.
- ECONOMICALLY DISADVANTAGED** - A student who utilizes the free/reduced lunch program at their school.
- ENGLISH LANGUAGE LEARNER (ELL)** - A student whose first language is not English and who is in the process of learning English.
- GED TEST** - The test of General Educational Development to qualify for the Commonwealth Secondary School Diploma, which is issued by the Pennsylvania Department of Education to certify that the holder meets high school graduation requirements set by the State Board of Education.
- HIGH SCHOOL GRADUATE** - An individual who has received formal recognition from school authorities, by the granting of a diploma, for completing a prescribed course of studies in a secondary-level school.
- MIGRANT** - A child who is, or whose parent or spouse is, a migratory agricultural worker, including a migrating dairy worker, or a migratory fisher, and who, in the preceding 36 months, in order to obtain or accompany such parent or spouse, in order to obtain, temporary or seasonal employment in agricultural or fishing work (a) has moved from one school district to another; (b) in a State that is comprised of a single school district, has moved from one administrative area to another within such district.
- NONPUBLIC SCHOOL** - A school that is privately controlled by a nonpublic entity and is financed from sources other than public taxation.

OCCUPATIONAL CATEGORIES:

FARM WORKER - Includes agricultural, forestry, fishing and related occupations such as: animal caretaker, farm worker/manager, nursery worker, fisher, hunter, trapper and forestry and logging worker/operator.

HOMEMAKER - Includes those whose primary occupation is homemaking, which involves all aspects of home and family living.

MILITARY - Includes those enlisted in the armed services, national guard, reserves or the merchant marine.

WHITE COLLAR WORKER -

Administrative support, including clerical: supervisor, computer equipment operator, secretary, interviewer, stenographer, typist, information clerk, records processing clerk, bank teller; duplicating, mail, and other office machine operator, communications equipment operator, mail and message distributing; material recording, scheduling and distributing clerk, adjuster, investigator; teacher aide and library assistant.

Executive, administrative, and managerial: accountant, auditor, purchasing agent and buyer.

Sales: cashier, sales representative, sales worker, real estate agent and travel agent.

Professional and technical: health occupations, dental hygienist, dietetics technician, emergency medical technician; social, recreation, and religious worker; artist, musician, athlete, reporter, engineering technician, science technician and computer programmer.

BLUE COLLAR WORKER -

Handlers, equipment cleaners, helpers, and laborers: nursery worker, groundskeeper, gardener, animal caretaker, timber cutting and logging, fisher, hunter, trapper; garbage collector, machine feeder, garage and service station related occupations, vehicle washer, equipment cleaner, hand packer.

Machine operators, assemblers, and inspectors: metalworking and plastic working (lathe, drilling and boring, grinding, metal plating); woodworking machine operator, printing machine operator (printing press, typesetter, compositor, photoengraver and lithographer); textile, apparel, and furnishings machine operator (laundering, dry cleaning, pressing, textile sewing, weaving); assorted materials machine operator (cementing, gluing, packaging, filling, extruding, forming, mixing and blending, painting, baking, pickling, folding, crushing and grinding; photographic process; motion picture projectionist); fabricator, assembler, and hand-working occupations (welder, cutter, trimmer, painter, engraver); production inspector, tester and sampler.

Precision production, craft and repair occupations: mechanic (aircraft, automobile, bus, truck, farm equipment, heavy equipment, heating, air conditioning, refrigeration); repairer (small engine, industrial machinery, electronics, data processing equipment, household appliance, power tools, communications equipment, bicycle, camera, watch, musical instrument, locksmith and safe, office machine, vending machine, elevator, mechanical controls and valve), millwright; construction trades occupations (supervisor, brick mason, stonemason, tile setter, carpenter, electrician, glazier,

power transmission, carpet installer, drywall installer, insulation worker, roofer, sheet metal duct installer, structural metal worker, earth driller; paving, surfacing, and tamping equipment operator); extractive occupations (oil well driller, explosives worker, mining machine operator); metal working and woodworking occupations (tool and die maker, assembler, machinist, boilermaker; grinder, filer and tool sharpener; patternmaker and model maker; engraver, precious stones and metals worker, sheet metal worker, cabinet maker and bench carpenter, furniture and wood finisher); textile, apparel, and furnishings machine worker (dressmaker, tailor, upholsterer, shoe/leather worker); assorted materials worker (hand molder, patternmaker, cutter, optical goods worker, dental laboratory technician; bookbinder, electrical and electronic equipment assembler); food production occupations (butcher, meat cutter, baker, and food batch maker); inspector, tester, grader, adjuster and calibrator; plant and system operator (water and sewage treatment plant and power plant); precision production supervisor.

Transportation and material moving occupations: motor vehicle operator (truck, bus, taxicab); chauffer, parking lot attendant; railroad transportation and water transportation occupations; material moving equipment operator (hoist and winch, crane and tower, grader, dozer, scraper, excavating and loading).

SERVICE WORKER (except private household) -

Cleaning and building service occupations: janitor, cleaner, maid, houseman, elevator operator and pest control worker.

Food service: bartender, chef, cook, food preparation worker, waiter and waitress.

Health service occupations: health aide, nursing aide, orderly and attendant.

Personal service occupations: amusement and recreation facility attendant, baggage porter and bellhop, barber, hairdresser, cosmetologist, guide and usher, child care worker, public transportation attendant and welfare service aide.

Protective service occupations: correction officer, crossing guard, detective, firefighter, fire prevention, guard, police and sheriff.

OTHER POSTSECONDARY SCHOOL (NONDEGREE) - A school licensed or approved by the state to offer a certificate, diploma or some similar type of recognition of achievement issued by the institution.

PRIVATE SCHOOL - A nonpublic school defined by the licensing regulations as one that maintains or conducts classes for the purpose of offering instruction for consideration, profit or tuition, to five or more students at one time or to 25 or more students during the school year.

RACE/ETHNICITY CATEGORIES - Categories used to describe groups to which individuals belong, identify with or belong in the eyes of the community. These categories do not denote scientific definitions of anthropological origins. However, no person may be counted in more than one racial/ethnic category.

AMERICAN INDIAN/ALASKAN NATIVE - A person having origins in any of the original peoples of North America and who maintains cultural identification through tribal affiliation or community recognition.

ASIAN/PACIFIC ISLANDER - A person having origins in any of the original peoples of the Far East, Southeast Asia, the Indian subcontinent or the Pacific Islands. This includes people from China, Japan, Korea, the Philippine Islands, Samoa, India and Vietnam.

BLACK (NON-HISPANIC) - A person having origins in any of the black racial groups of Africa (except those of Hispanic origin).

HISPANIC - A person of Mexican, Puerto Rican, Cuban, Central or South American or other Spanish culture or origin, regardless of race.

WHITE (NON-HISPANIC) - A person having origins in any of the original peoples of Europe, North Africa or the Middle East (except those of Hispanic origin).

SPECIAL EDUCATION - Students who are eligible for services under the Individuals with Disabilities Education Act (IDEA) and who have Individualized Education Program (IEPs) (excluding "gifted"); an IEP means a written statement for a child with disability that is developed, reviewed, and revised in a team meeting in accordance with the regulations governing Special Education programs in PA. The IEP specifies the individual educational needs of the child and what education and related services are necessary to meet the needs.

APPENDIX G

SOURCES

1. Public Schools Graduate Survey (EDGR--Electronic Dropout/Graduate Report)
2. Private and Nonpublic Schools High School Graduate Report (PDE-4037)
3. Bureau of Adult Basic and Literacy Education, Pennsylvania Department of Education, 2004 GED (unpublished data).
4. *Projections of Education Statistics to 2013*, U.S. Department of Education, National Center for Education Statistics, 2003.