

DOCUMENT RESUME

ED 444 401

HE 032 940

TITLE Student Charges & Financial Aid, 1999-2000.
INSTITUTION American Association of State Colleges and Universities,
Washington, DC.; National Association of State Universities
and Land Grant Colleges, Washington, DC.
PUB DATE 2000-00-00
NOTE 33p.; For the 1998-99 report, see ED 430 500.
AVAILABLE FROM American Association of State Colleges and Universities,
1307 New York Avenue, NW, Fifth Floor, Washington DC
20005-4701; Tel: 202-293-7070; Fax: 202-296-5819.
PUB TYPE Numerical/Quantitative Data (110) -- Reports - Descriptive
(141)
EDRS PRICE MF01/PC02 Plus Postage.
DESCRIPTORS College Students; *Educational Finance; Higher Education;
Parent Financial Contribution; Paying for College; *Public
Colleges; State Colleges; State Universities; *Student
Costs; *Student Financial Aid; *Student Loan Programs;
Tables (Data); Trend Analysis; Tuition; Undergraduate
Students

ABSTRACT

This report provides college student tuition charges and fees for the 1999-2000 academic year at public four-year institutions, as well as comparative data for the 1998-99 academic year. The report notes that this year marked the smallest percentage tuition and fee increases in over a decade, with the average cost to undergraduate resident students rising 3.3 percent over the previous year. Increases in room and board continued to moderate, and the 4.1 percent overall rise matched that of 1998-99. The cost of attending college as a percentage of family income has stabilized over the past five years, but it has risen considerably for low-income families; for this group, these expenses represent more than 60 percent of annual income. Finally, total financial aid to students rose 4.5 percent, to a record \$64.1 billion in 1998-99. The report also analyzes implications of state policy developments, as well as developments in federal, state, and institutional student financial aid. Appended are tables of selected undergraduate charges at American Association of State Colleges and Universities and National Association of State Universities and Land-Grant Colleges institutions. (Contains 22 references.) (RAB)

Student Charges & Financial Aid

1999-2000

U.S. DEPARTMENT OF EDUCATION
Office of Educational Research and Improvement
EDUCATIONAL RESOURCES INFORMATION
CENTER (ERIC)

- This document has been reproduced as received from the person or organization originating it.
- Minor changes have been made to improve reproduction quality.

- Points of view or opinions stated in this document do not necessarily represent official OERI position or policy.

PERMISSION TO REPRODUCE AND
DISSEMINATE THIS MATERIAL HAS
BEEN GRANTED BY

J.G. James

TO THE EDUCATIONAL RESOURCES
INFORMATION CENTER (ERIC)

1

American Association of State
Colleges and Universities

National Association of State Universities
and Land-Grant Colleges

BEST COPY AVAILABLE

Contents

Overview **3**

Highlights **3**

Findings **4**

Analysis and Policy Implications **11**

Financial Aid Developments **14**

Conclusion **16**

Appendix A: Selected Student Charges
for Undergraduates at AASCU Institutions,
Academic Year 1999–2000 **17**

Appendix B: Selected Student Charges
for Undergraduates at NASULGC Institutions,
Academic Year 1999–2000 **27**

© Copyright 2000 American Association of State Colleges and Universities
1307 New York Avenue, NW • Fifth Floor
Washington, DC 20005-4701

National Association of State Universities and Land-Grant Colleges
1307 New York Avenue, NW • Suite 400
Washington, DC 20005-4701

No part of this publication may be reproduced, stored in a retrieval system, or transmitted, in any form or by any means, electronic, mechanical, recording, or otherwise, without the prior written permission of the American Association of State Colleges and Universities or the National Association of State Universities and Land-Grant Colleges.

Student Charges and Financial Aid 1999–2000

Overview

Two years ago, there was little question that the issues of college costs, student charges, and financial aid were near the top of the public policy agenda. Congress had created a national commission to carefully examine these topics and issue policy recommendations regarding them, the media were cranking out stories of tuition angst among families, and colleges and universities were rushing to develop and/or promote cost containment efforts.

Two years, however, can be an eternity in the policymaking world. At the second anniversary of the National Commission on the Cost of Higher Education's final report, what has become of the costs, charges, and aid issues? Some would argue that they are once again "out of sight, out of mind," victims of Washington's notoriously short attention span, the continued moderation of tuition rates, and a robust economy. A recent poll by *The Washington Post*, however, suggests that they have not completely left Americans' minds, as the expense of a good college education made the list of top 10 worries.¹

All of this inevitably leads to the question: how important are college costs, prices, and subsidies to policymakers and average citizens in 2000? To be sure, there has been movement on these issues—national studies have been launched, institutions have stepped up their economizing efforts, and new aid programs have been proposed to ease the affordability pinch. But will any of these developments address some of the nagging problems related to cost and price, such as the rising burden of tuition relative to income for the poorest Americans? It is too early to tell.

The next recession and its accompanying round of budget-tightening, however, may reveal the success or failure of these efforts.

Highlights

Tuition and Fees

- ◆ The rate of tuition and fee increases at public four-year institutions continued its downward trend in 1999–2000, resulting in the smallest percentage increase in more than a decade. Average resident undergraduate tuition and fees at these institutions rose slightly more than 3 percent from 1998–99 to 1999–2000.
- ◆ One-third of the states reported undergraduate tuition and fee increases below the Higher Education Price Index (the "cost of living" for colleges and universities) for Fiscal Year 1999.
- ◆ The majority of public four-year institutions still charge less than \$3,500 annually for tuition and fees.

Room and Board

- ◆ Increases in room and board rates continued to moderate as well. Average room and board rates at public four-year institutions rose 4.1 percent from 1998–99 to 1999–2000, the same rate of increase as the previous year.²

Trends and Indicators

- ◆ Over the past five years, the cost of attending college as a percentage of family income has stabilized. Cost of attendance, however, remains particularly high for low-income families, for whom these expenses represent more than 60 percent of annual income.³

Financial Aid

- ◆ Financial aid to postsecondary students in the United States rose 4.5 percent to a record \$64.1 billion in

1998-99. Federal and state aid expenditures increased 2.9 and 4.6 percent, respectively, for the year. The largest percentage increase in student aid expenditures came at the institutional level. Institutional and other grant expenditures increased 7.2 percent between 1997-98 and 1998-99.⁴

- ◆ Loans constituted 58 percent of all student aid in 1998-99; grants made up 40 percent, while work study accounted for 2 percent.⁵

increased 3.3 percent from 1998-99 to 1999-2000 (\$3,247 to \$3,355). [See Table 1] Resident undergraduate tuition at AASCU and NASULGC institutions rose 4.5 and 2.5 percent respectively (\$2,917 to \$3,047 and \$3,464 to \$3,551) over the same period. [See Tables 2 and 3] By comparison, the Consumer Price Index (the nation's primary inflation measure) rose 2.1 percent from July 1998 to July 1999, and the Higher Education Price Index (a measure of inflation for colleges and universities) rose 3.5 percent in Fiscal Year 1999.

- ◆ The one-year increase in tuition and fees for non-resident undergraduate students shows a similar pattern. Average tuition and fees for non-resident undergraduates rose 3.0 percent (\$9,111 to \$9,380) at all public four-year colleges and universities from 1998-99 to 1999-2000. At AASCU institutions, the

Findings

Tuition and Fees

- ◆ Average tuition and fees for resident undergraduate students at public four-year colleges and universities

Table 1.

**Selected Student Charges at Public Four-Year Institutions,
Academic Years 1998-99 and 1999-2000**

	Number of Institutions	1998-99 Student Charges	1999-2000 Student Charges	Dollar Change	Percentage Change
Undergraduate					
Resident Tuition and Fees	502	\$3,247	\$3,355	\$108	3.3%
Non-Resident Tuition and Fees	502	\$9,111	\$9,380	\$269	3.0%
Room and Board	427	\$4,544	\$4,732	\$188	4.1%
Graduate					
Master's					
Resident Tuition and Fees	402	\$4,033	\$4,115	\$82	2.0%
Non-Resident Tuition and Fees	402	\$10,178	\$10,454	\$276	2.7%
Doctoral					
Resident Tuition and Fees	201	\$4,179	\$4,274	\$95	2.3%
Non-Resident Tuition and Fees	201	\$10,554	\$10,974	\$420	4.0%

Source: 1999-2000 College Board Annual Survey of Colleges (data extracted from Standard Research Compilation files)

- Notes:**
- Data in this table are based on institutions that provided tuition and fee and full-time undergraduate enrollment data to the survey in the two-year period.
 - Average tuition and fees are weighted by full-time undergraduate enrollment.
 - Room and board charges are weighted by an estimated number of undergraduates in on-campus housing.
 - Insufficient data were available to calculate room and board charges at the master's and doctoral levels.

Table 2**Selected Student Charges at AASCU Institutions,
Academic Years 1998-99 and 1999-2000**

	Number of Institutions	1998-99 Student Charges	1999-2000 Student Charges	Dollar Change	Percentage Change
Undergraduate					
Resident Tuition and Fees	360	\$2,917	\$3,047	\$130	4.5%
Non-Resident Tuition and Fees	360	\$7,967	\$8,194	\$227	2.8%
Room and Board	297	\$4,163	\$4,345	\$182	4.4%
Graduate					
Master's					
Resident Tuition and Fees	288	\$3,271	\$3,446	\$175	5.4%
Non-Resident Tuition and Fees	286	\$8,268	\$8,407	\$139	1.7%
Doctoral					
Resident Tuition and Fees	100	\$3,377	\$3,614	\$237	7.0%
Non-Resident Tuition and Fees	100	\$8,582	\$9,022	\$440	5.1%

Source: 1999-2000 College Board Annual Survey of Colleges (data extracted from Standard Research Compilation files)

- Notes:**
- Results include student charges data for Howard University and Gallaudet University, which are AASCU member institutions but are not classified as public four-year institutions by the National Center for Education Statistics.
 - Data in this table based on AASCU institutions that provided tuition and fee and full-time undergraduate enrollment data to the survey in the two-year period.
 - Average tuition and fees are weighted by full-time undergraduate enrollment.
 - Room and board charges are weighted by an estimated number of undergraduates in on-campus housing.
 - Insufficient data were available to calculate room and board charges at the master's and doctoral levels.

increase was 2.8 percent (\$7,967 to \$8,194). At NASULGC institutions, the increase was 2.5 percent (\$10,024 to \$10,273). [See Tables 1, 2, and 3]

- ◆ Graduate tuition and fees posted slightly lower one-year increases. Resident tuition and fees for master's students at public four year institutions and rose 2.0 percent (\$4,033 to \$4,115), while at AASCU institutions the increase was 5.4 percent (\$3,271 to \$3,446). At NASULGC institutions, the increase was 1.6 percent (\$4,281 to \$4,349). For doctoral students, resident tuition and fees grew 2.3 percent at public four-year institutions (\$4,179 to \$4,274), 7.0 percent at AASCU institutions (\$3,377 to \$3,614), and 1.6 percent at NASULGC institutions (\$4,317 to \$4,385). [See Tables 1, 2, and 3]
- ◆ From 1998-99 to 1999-2000, three states (California, Texas and Virginia) posted decreases in their resident undergraduate tuition and fee rates. Another seven states and territories increased tuition at or below the rate of increase for the Consumer Price Index for Fiscal Year 1999 (2.1 percent), and another seven states increased tuition at or below the rate of increase for the Higher Education Price Index for Fiscal Year 1999 (3.5 percent). [See Table 4]
- ◆ Almost two-thirds of public four-year colleges and universities (63.9 percent) charged less than \$3,500 in resident undergraduate tuition and fees for 1999-2000, and more than half (58.6 percent) of the full-time resident undergraduate students attending public four-year institutions were charged less than

Table 3

**Selected Student Charges at NASULGC Institutions,
Academic Years 1998-99 and 1999-2000**

	Number of Institutions	1998-99 Student Charges	1999-2000 Student Charges	Dollar Change	Percentage Change
Undergraduate					
Resident Tuition and Fees	163	\$3,464	\$3,551	\$88	2.5%
Non-Resident Tuition and Fees	161	\$10,024	\$10,273	\$249	2.5%
Room and Board	154	\$4,782	\$4,972	\$191	4.0%
Graduate					
Master's					
Resident Tuition and Fees	156	\$4,281	\$4,349	\$68	1.6%
Non-Resident Tuition and Fees	155	\$10,728	\$11,124	\$395	3.7%
Doctoral					
Resident Tuition and Fees	141	\$4,317	\$4,385	\$68	1.6%
Non-Resident Tuition and Fees	140	\$10,786	\$11,193	\$407	3.8%

Source: 1999-2000 College Board Annual Survey of Colleges (data extracted from Standard Research Compilation files)

- Notes:**
- Results include student charges data for Tuskegee University and the Massachusetts Institute of Technology, which are NASULGC member institutions but are not classified as public four-year institutions by the National Center for Education Statistics.
 - Data in this table based on NASULGC institutions that provided tuition and fee and full-time undergraduate enrollment data to the survey in the two-year period.
 - Average tuition and fees are weighted by full-time undergraduate enrollment.
 - Room and board charges are weighted by an estimated number of undergraduates in on-campus housing.
 - Insufficient data were available to calculate room and board charges at the master's and doctoral levels.

\$3,500 in tuition and fees. At AASCU institutions, almost three-quarters of the institutions (71.4 percent) charged less than \$3,500 in resident undergraduate tuition and fees, and over two-thirds (68.6 percent) of full-time resident undergraduate students at those institutions were charged less than \$3,500 in tuition and fees. Over half of NASULGC institutions (55.2 percent) charged under \$3,500 in tuition and fees, and over half (52.2 percent) of full-time resident undergraduates at these institutions were charged less than \$3,500 in tuition and fees. [See Tables 5, 6, and 7]

- ◆ In regional terms, institutions in the Mid East, Great Lakes, Plains, and Rocky Mountain states posted tuition and fee increases larger than the national

average (3.3 percent), with institutions in the Far West averaging a 1.2 percent decline in average tuition and fees. At AASCU institutions, six regions posted average percentage increases greater than national average (ranging from 4.2 percent to 7.6 percent), with one region posting a decline. For NASULGC institutions, four regions posted percentage increases greater than the national average (ranging from 4.0 percent to 5.0 percent), and two regions posted decreases. [See Tables 8, 9, and 10]

Room and Board

- ◆ Room and board charges increased at a similar rate during this period. At public four-year institutions, average room and board rose from \$4,544 in 1998-99 to \$4,732 in 1999-2000 (4.1 percent). AASCU institu-

Table 4

**Average Undergraduate Resident Tuition and Fees Charged
by Public Four-Year Institutions, by State, 1998-99 and 1999-2000**

State	Number of Institutions	1998-99 Tuition and Fee Charges	1999-2000 Tuition and Fee Charges	Dollar Change	Percentage Change
Alabama	11	\$2,608	\$2,870	\$262	10.0%
Alaska	1	\$3,120	\$3,202	\$82	2.6%
Arizona	3	\$2,160	\$2,261	\$101	4.7%
Arkansas	10	\$2,849	\$3,038	\$189	6.6%
California	26	\$2,667	\$2,581	\$(86)	-3.2%
Colorado	11	\$2,744	\$2,859	\$115	4.2%
Connecticut	5	\$4,291	\$4,371	\$80	1.9%
Delaware	2	\$4,478	\$4,766	\$288	6.4%
Florida	11	\$2,145	\$2,252	\$107	5.0%
Georgia	16	\$2,500	\$2,628	\$128	5.1%
Hawaii	2	\$2,773	\$2,957	\$184	6.6%
Idaho	4	\$2,140	\$2,337	\$197	9.2%
Illinois	9	\$3,956	\$4,053	\$97	2.5%
Indiana	14	\$3,541	\$3,795	\$254	7.2%
Iowa	2	\$2,865	\$3,019	\$154	5.4%
Kansas	7	\$2,443	\$2,485	\$42	1.7%
Kentucky	7	\$2,585	\$2,840	\$255	9.9%
Louisiana	11	\$2,327	\$2,444	\$117	5.0%
Maine	8	\$4,114	\$4,196	\$82	2.0%
Maryland	10	\$4,344	\$4,699	\$355	8.2%
Massachusetts	12	\$4,151	\$4,244	\$93	2.2%
Michigan	15	\$4,285	\$4,447	\$162	3.8%
Minnesota	11	\$3,699	\$3,881	\$182	4.9%
Mississippi	8	\$2,870	\$2,871	\$1	0.0%
Missouri	13	\$3,569	\$3,735	\$166	4.7%
Montana	6	\$2,842	\$2,911	\$69	2.4%
Nebraska	6	\$2,749	\$2,940	\$191	6.9%
Nevada	2	\$2,170	\$2,238	\$68	3.1%
New Hampshire	5	\$5,801	\$6,116	\$315	5.4%
New Jersey	22	\$4,963	\$5,274	\$311	6.3%
New Mexico	5	\$2,203	\$2,361	\$158	7.2%
New York	32	\$3,821	\$3,883	\$62	1.6%
North Carolina	15	\$1,980	\$2,110	\$130	6.6%
North Dakota	6	\$2,688	\$2,819	\$131	4.9%
Ohio	14	\$4,357	\$4,578	\$221	5.1%
Oklahoma	11	\$2,021	\$2,237	\$216	10.7%
Oregon	7	\$3,502	\$3,544	\$42	1.2%
Pennsylvania	28	\$5,301	\$5,554	\$253	4.8%
Rhode Island	2	\$4,209	\$4,373	\$164	3.9%
South Carolina	9	\$3,491	\$3,685	\$194	5.6%
South Dakota	7	\$2,941	\$3,162	\$221	7.5%
Tennessee	8	\$2,482	\$2,681	\$199	8.0%
Texas	27	\$2,594	\$2,537	\$(57)	-2.2%
Utah	4	\$2,311	\$2,370	\$59	2.6%
Vermont	3	\$6,937	\$7,251	\$314	4.5%
Virginia	15	\$4,220	\$3,705	\$(515)	-12.2%
Washington	6	\$3,257	\$3,352	\$95	2.9%
West Virginia	9	\$2,353	\$2,458	\$105	4.5%
Wisconsin	10	\$3,153	\$3,412	\$259	8.2%
Wyoming	1	\$2,330	\$2,456	\$126	5.4%
Outlying Areas					
Puerto Rico	12	\$1,032	\$1,045	\$13	1.3%
Virgin Islands	1	\$2,586	\$2,856	\$270	10.4%
U.S.	502	\$3,247	\$3,355	\$108	3.3%

Source: 1999-2000 College Board Annual Survey of Colleges (data extracted from Standard Research Compilation Files)

- Notes:
- Data in this table are based on institutions that provided tuition and fee and full-time undergraduate enrollment data to the survey in the two-year period.
 - Average tuition and fees are weighted by full-time undergraduate enrollment.

Table 5

**Distribution of Tuition and Fees for Resident Undergraduates
at Public Four-Year Institutions, Academic Year 1999-2000**

Tuition/Fee Level	Number of Institutions	Percentage of Total Institutions	Number of Full-Time Resident Undergraduates	Percentage of Total Full-Time Resident Undergraduates
Less than \$1,500	12	2.4%	51,436	1.5%
\$1,500 to \$1,999	43	8.6%	286,421	8.4%
\$2,000 to \$2,499	103	20.5%	663,778	19.5%
\$2,500 to \$2,999	72	14.3%	465,103	13.7%
\$3,000 to \$3,499	91	18.1%	524,996	15.4%
\$3,500 to \$3,999	56	11.2%	502,304	14.8%
\$4,000 to \$4,499	45	9.0%	359,337	10.6%
\$4,500 to \$4,999	31	6.2%	263,365	7.7%
\$5,000 and Over	49	9.8%	285,013	8.4%
Total	502	100.0%	3,401,753	100.0%

Source: 1999-2000 College Board Annual Survey of Colleges (data extracted from Standard Research Compilation files)

- Notes:**
- Data in this table are based on institutions that provided tuition and fee and full-time undergraduate enrollment data to the survey in the two-year period.
 - Totals may not sum to 100 percent due to rounding.

Table 6

**Distribution of Tuition and Fees for Resident Undergraduates
at AASCU Institutions, Academic Year 1999-2000**

Tuition/Fee Level	Number of Institutions	Percentage of Total Institutions	Number of Full-Time Resident Undergraduates	Percentage of Total Students
Less than \$1,500	6	1.7%	38,466	2.0%
\$1,500 to \$1,999	42	11.7%	275,569	14.5%
\$2,000 to \$2,499	83	23.1%	413,762	21.8%
\$2,500 to \$2,999	55	15.3%	272,927	14.4%
\$3,000 to \$3,499	71	19.7%	301,093	15.9%
\$3,500 to \$3,999	38	10.6%	251,722	13.3%
\$4,000 to \$4,499	35	9.7%	208,480	11.0%
\$4,500 to \$4,999	13	3.6%	86,082	4.5%
\$5,000 and Over	17	4.7%	49,833	2.6%
Total	360	100.0%	1,897,934	100.0%

Source: 1999-2000 College Board Annual Survey of Colleges (data extracted from Standard Research Compilation Files)

- Notes:**
- Results include student charges data for Howard University and Gallaudet University.
 - Data in this table are based on AASCU institutions that provided tuition and fee and full-time undergraduate enrollment data to the survey in the two year period.
 - Totals may not sum to 100 percent due to rounding.

Table 7

**Distribution of Tuition and Fees for Resident Undergraduates
at NASULGC Institutions, Academic Year 1999-2000**

Tuition/Fee Level	Number of Institutions	Percentage of Total Institutions	Number of Full-Time Resident Undergraduates	Percentage of Total Full-Time Resident Undergraduates
Less than \$1,500	2	1.2%	25,500	1.3%
\$1,500 to \$1,999	9	5.5%	122,564	6.3%
\$2,000 to \$2,499	34	20.9%	394,577	20.1%
\$2,500 to \$2,999	23	14.1%	245,316	12.5%
\$3,000 to \$3,499	22	13.5%	236,141	12.0%
\$3,500 to \$3,999	25	15.3%	335,377	17.1%
\$4,000 to \$4,499	14	8.6%	172,513	8.8%
\$4,500 to \$4,999	16	9.8%	202,581	10.3%
\$5,000 and Over	18	11.0%	225,677	11.5%
Total	163	100.0%	1,960,246	100.0%

Source: 1999-2000 College Board Annual Survey of Colleges (data extracted from Standard Research Compilation Files)

- Notes:**
- Results include student charges data for Tuskegee University and the Massachusetts Institute of Technology.
 - Data in this table are based on NASULGC institutions that provided tuition and fee and full-time undergraduate enrollment data to the survey in the two-year period.
 - Totals may not sum to 100 percent due to rounding.

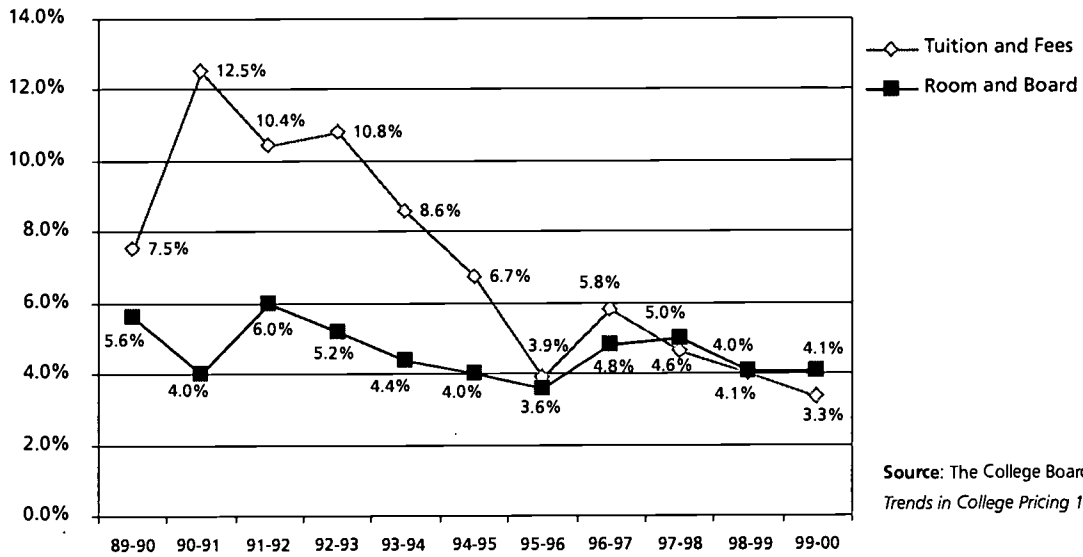
tions posted a one-year increase of 4.4 percent (\$4,165 to \$4,345). NASULGC institutions posted a one-year increase of 4.0 percent (\$4,782 to \$4,972). [See Tables 1, 2, and 3]

Trends and Indicators

- ◆ The annual tuition and fee increase of 3.3 percent between 1998-99 and 1999-2000 represents the lowest increase in a decade for four-year public institutions. The 4.1 percent increase in room and board charges represents the third-lowest rate increase in a decade. [See Figure 1]
- ◆ From 1989-90 to 1999-2000, tuition and fees at public four-year colleges and universities increased 51.4 percent (from \$2,217 to \$3,356) in constant (inflation-adjusted) dollars. Tuition and fees at private four-year institutions rose 34.5 percent (from \$11,436 to \$15,380) during the same period.⁶
- ◆ Room and board charges at public four-year institutions rose 18.9 percent between 1989-90 and 1999-2000, increasing from \$3,978 to \$4,730 in constant dollars. Room and board charges at private institutions rose 52.9 percent during the same period, from \$3,898 to \$5,959.⁷
- ◆ The cost of college attendance at four-year public or private institutions, as a percentage of family income, has stabilized over the past five years. From 1987-88 to 1997-98, however, the total cost of attendance at public four-year institutions held basically steady for middle and high income families, but rose considerably for low income families.⁸ [See Figure 2]

Figure 1

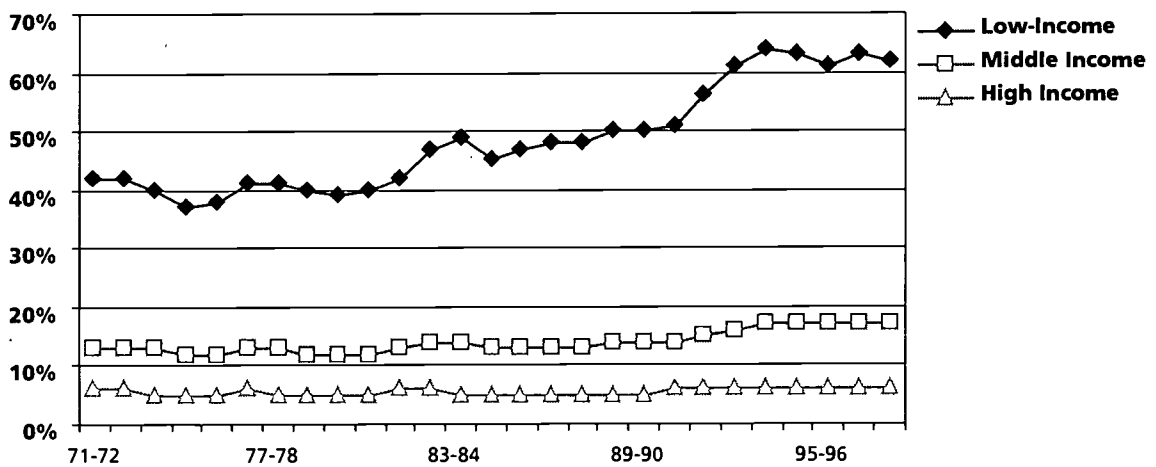
**Percentage Increases in Student Charges,
Public Four-Year Institutions, 1989-90 to 1999-00**



Source: The College Board, *Trends in College Pricing 1999*

Figure 2

**Cost of Attendance at Public Four-Year Institutions,
as a Share of Family Income, 1971-72 to 1997-98**



Source: The College Board, *Trends in Student Aid 1999*

Note: "Low Income" refers to the lowest (first) family income quintile, "Middle Income" refers to the third family income quintile, and "High Income" refers to the highest (fifth) family income quintile.

Analysis and Policy Implications

State Policy Developments

Even though the rate of increase for tuition has fallen considerably over the past decade, debates regarding appropriate tuition levels and who should have authority to set tuition continue to percolate in statehouses. Discussion of these issues is likely to become prominent—and more heated—if the pace of state revenue collection slackens over the next year.

- ◆ The continued decline in the rate of increase for tuition and fees, combined with significant increases in state appropriations for higher education, suggests a significant linkage between the two. This linkage was also apparent in the early 1990s, when cuts in state appropriations were met with double-digit tuition increases. In several states (such as California and Virginia), recent appropriations increases have been approved in conjunction with tuition freezes and rollbacks. [See Figure 3]

- ◆ Approximately 43 percent (20) of the respondents to AASCU's 1999 State Issues Survey indicated that public institutions in their state are operating under limitations on their rate of increase for tuition (e.g. indexing of tuition increases to the Consumer Price Index or the Higher Education Price Index). Another 65 percent (30 respondents) indicated that public institutions in their state were sharing courses or programs as a cost-saving measure. Slightly less than 30 percent (13 respondents) reported that their state's public colleges and universities are offering guarantees that students in certain programs will be able to complete their degrees in four years, in an effort to reduce the accumulation of excess student credit hours.
- ◆ A number of state legislatures will be considering tuition-related measures for the coming year. Those states include:
 - South Carolina—House Bill 4045 would levy a tuition surcharge against students at the state's public college and universities who take more than 140

Figure 3

Change in Resident Undergraduate Student Charges and State Appropriations, Public Colleges and Universities, 1989-90 to 1999-2000

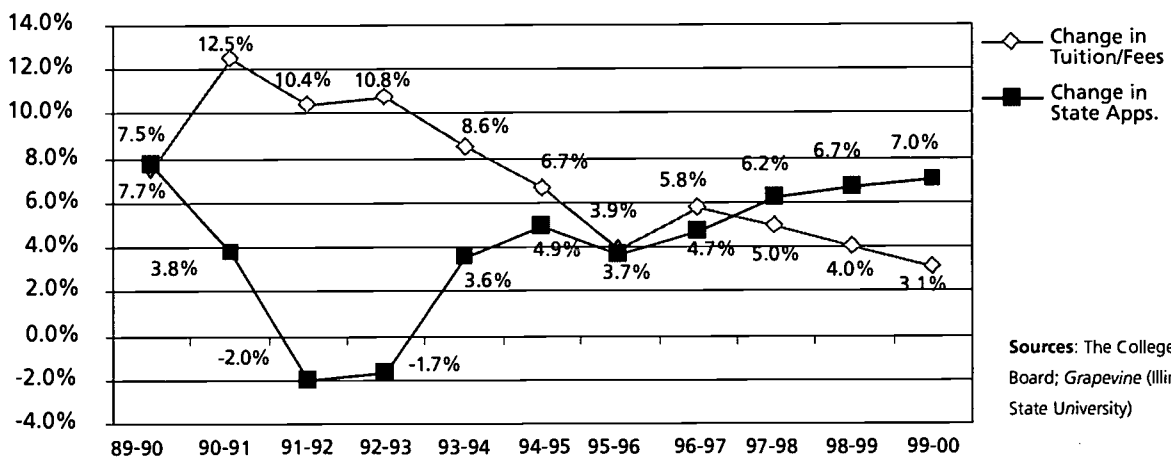


Table 8

**Average Undergraduate Resident Tuition and Fees
at Four-Year Public Institutions, by Region, 1998-99 and 1999-2000**

Region	Number of Institutions	Resident Tuition and Fees 1998-1999	Resident Tuition and Fees 1999-2000	Dollar Change	Percentage Change
New England	35	\$4,611	\$4,727	\$116	2.5%
Mid East	86	\$4,532	\$4,743	\$210	4.6%
Great Lakes	62	\$3,945	\$4,141	\$196	5.0%
Plains	52	\$3,133	\$3,285	\$152	4.9%
Southeast	128	\$2,679	\$2,750	\$ 71	2.6%
Southwest	46	\$2,404	\$2,434	\$ 29	1.2%
Rocky Mountain	26	\$2,555	\$2,668	\$113	4.4%
Far West	44	\$2,819	\$2,785	\$(34)	-1.2%
U.S. Service Schools and Outlying Areas	12	\$1,069	\$1,089	\$ 19	1.8%
Total	491				

Source: 1999-2000 College Board Annual Survey of Colleges (data extracted from Standard Research Compilation Files)

Notes: • Data in this table are based on institutions that provided tuition and fee and full-time undergraduate enrollment data to the survey in the two-year period.

- Average tuition and fees are weighted by full-time undergraduate enrollment.
- Totals may not sum to 100 percent due to rounding.

• Regions are defined as follows:

New England: CT, MA, ME, NH, RI, VT

Mid East: DE, DC, MD, NJ, NY, PA

Great Lakes: IL, IN, MI, OH, WI

Plains: IA, KS, MN, MO, NE, ND, SD

Southeast: AL, AR, FL, GA, KY, LA, MS, NC, SC, TN, VA, WV

Southwest: AZ, NM, OK, TX

Rocky Mountain: CO, ID, MT, UT, WY

Far West: AK, CA, HI, NV, OR, WA

credit hours to complete four-year baccalaureate degree programs or more than 110 percent of the credit hours necessary to complete baccalaureate degrees in five-year programs.

- **California**—Gov. Gray Davis has proposed a tuition freeze at California's public colleges and universities. The freeze would preserve the Assembly's tuition rollback of last year, which brought tuition at the state's public institutions to their lowest level since 1992-93. The tuition provision calls for an annual increase of almost \$1 billion in state spending on higher education.⁹

- **Wisconsin**—In response to backlash against public university tuition increases, Wisconsin's governor signed a tuition freeze—to last through 2000-2001—at the end of 1999. Lawmakers may still debate proposals to curb future increases. One proposal would bar institutions from charging more than 40 percent of instructional costs as tuition. A second would limit tuition increases to the annual percentage growth in the Consumer Price Index.¹⁰
- **Virginia**—Gov. Gilmore asked the legislature to extend, for two additional years, a tuition freeze that has been in place at the state's four-year public

Table 9

**Average Undergraduate Resident Tuition and Fees
at AASCU Institutions, by Region, 1998-99 and 1999-2000**

Region	Number of Institutions	Resident Tuition and Fees 1998-1999	Resident Tuition and Fees 1999-2000	Dollar Change	Percentage Change
New England	25	\$3,747	\$3,829	\$83	2.2%
Mid East	63	\$4,217	\$4,407	\$190	4.5%
Great Lakes	48	\$3,548	\$3,763	\$215	6.1%
Plains	39	\$2,930	\$3,065	\$135	4.6%
Southeast	96	\$2,475	\$2,578	\$103	4.2%
Southwest	35	\$2,275	\$2,448	\$173	7.6%
Rocky Mountain	18	\$2,212	\$2,321	\$109	4.9%
Far West	28	\$2,077	\$2,057	\$(21)	-1.0%
U.S. Service Schools and Outlying Areas	6	\$1,089	\$1,114	\$25	2.3%
Total	358				

Source: 1999-2000 College Board Annual Survey of Colleges (data extracted from Standard Research Compilation Files)

- Notes:**
- Results include student charges data for Howard University and Gallaudet University.
 - Data in this table are based on AASCU institutions that provided tuition and fee and full-time undergraduate enrollment data to the survey in the two-year period.
 - Average tuition and fees are weighted by full-time undergraduate enrollment.
 - See Table 8 for regional key.
 - Totals may not sum to 100 percent due to rounding.

Table 10

**Average Undergraduate Resident Tuition and Fees
at NASULGC Institutions, by Region, 1998-99 and 1999-2000**

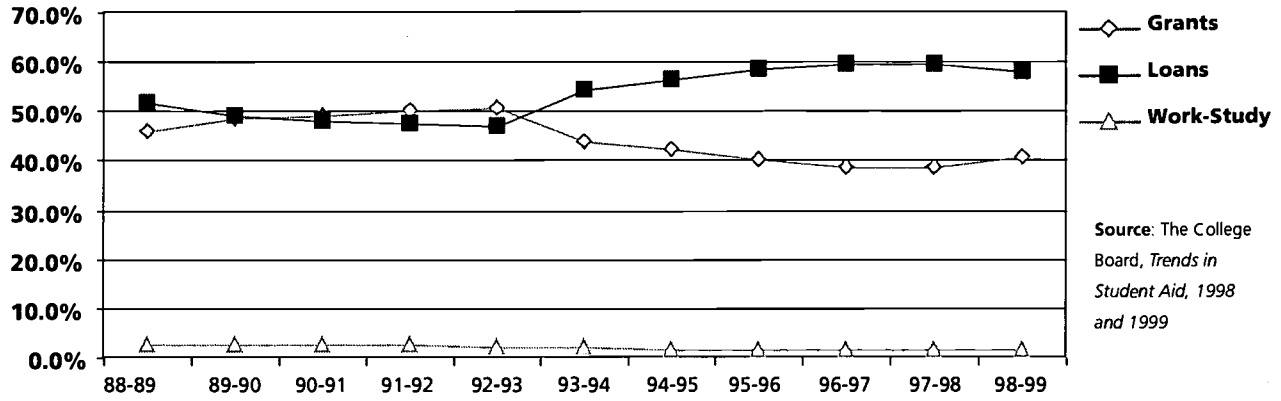
Region	Number of Institutions	Resident Tuition and Fees 1998-1999	Resident Tuition and Fees 1999-2000	Dollar Change	Percentage Change
New England	8	\$6,829	\$6,943	\$114	1.7%
Mid East	18	\$5,080	\$5,336	\$256	5.0%
Great Lakes	24	\$4,305	\$4,476	\$171	4.0%
Plains	16	\$3,395	\$3,562	\$167	4.9%
Southeast	49	\$2,742	\$2,812	\$71	2.6%
Southwest	14	\$2,531	\$2,460	\$(70)	-2.8%
Rocky Mountain	9	\$2,673	\$2,794	\$121	4.5%
Far West	22	\$3,143	\$3,090	\$(54)	-1.7%
U.S. Service Schools and Outlying Areas	3	\$1,119	\$1,150	\$31	2.7%
Total	163				

Source: 1999-2000 College Board Annual Survey of Colleges (data extracted from Standard Research Compilation Files)

- Notes:**
- Results include student charges data for Tuskegee University and the Massachusetts Institute of Technology.
 - Data in this table are based on NASULGC institutions that provided tuition and fee and full-time undergraduate enrollment data to the survey in the two-year period.
 - Average tuition and fees are weighted by full-time undergraduate enrollment.
 - See Table 8 for regional key.
 - Total may not sum to 100 percent due to rounding.

Figure 4

Grants, Loans, and Work-Study as a Share of Total Aid, 1988-89 to 1998-99



colleges since 1996. Last year, the Virginia Assembly rolled back in-state undergraduate tuition by 20 percent, and replaced the lost revenues with state funds.¹¹ In late February, however, lawmakers killed the proposal.

- New York—Gov. Pataki’s proposed budget includes significant funding increases for the State (SUNY) and City University (CUNY) of New York systems. The proposal also calls for freezing undergraduate tuition rates in both systems.¹²
- ◆ State policymakers are also calling for more intensive study of college costs and pricing. An example of this can be found in Missouri, where the legislatively mandated Commission on the Affordability of Higher Education recently released its report. The panel found that between 34 and 52 percent of the University of Missouri’s 1997-98 baccalaureate recipients graduated with a median student loan debt of \$16,000 to \$18,000. Repaying such a debt would require an annual income between \$26,000 and \$30,000. However, the average annual income for the state’s recent baccalaureate degree recipients was \$22,934.

Financial Aid Developments

The past year has seen the continuation of a number trends in the financial aid arena, including: the shift in the award of aid dollars to loan programs (as opposed to grants), as well as the increasing use of merit criteria (instead of financial need) as the basis for distributing aid at the state level.

General Developments

- ◆ From 1988-89 to 1998-1999, the portion of total postsecondary aid consisting of grants decreased from 46 to 41 percent, while the share of loan aid grew from 52 to 58 percent.¹³ [see Figure 4]

Federal Developments

- ◆ Between 1988-89 and 1998-99, postsecondary aid awarded to students from federal sources increased approximately 70 percent. However, increases were disproportionately directed into loan programs. Grant expenditures increased only 22 percent in constant dollars over the decade. In 1988-89, grant dollars constituted approximately 31 percent of all federal aid awarded. By 1998-99, the share of federal aid

dollars constituted by grants had decreased to 22 percent. Loan aid increased approximately 95 percent in constant dollars during the same period, and the proportion of federal aid constituted by student loans grew from about two-thirds (66 percent) to more than three-fourths (76 percent) of total federal aid dollars.¹⁴

- ◆ The federal budget approved for Fiscal Year 2000 (FY2000) brought modest gains for the major need-based aid programs, gains that will not be sufficient to stem the continued slippage in their purchasing power. The Pell Grant was funded at \$7.7 billion for FY2000, which represents a maximum grant of \$3,300. This is \$175 (5.6 percent) above the previous maximum of \$3,125, and \$50 above the President's requested maximum of \$3,250 for FY2000. The approved \$3,300 maximum, however, is \$225 below the funding level sought by the higher education community and pledged by several lawmakers in early 1999.
- ◆ Similarly, funding for the Supplemental Educational Opportunity Grant (SEOG, a program for students with financial need beyond their Pell Grant eligibility) increased only slightly, from \$619 million in FY99 to \$621 million in FY2000. The Leveraging Educational Assistance Partnerships Program (LEAP, which provides seed money for state need-based grant efforts) fared slightly better, with a 60 percent increase from \$25 million in FY99 to \$40 million in FY2000. These increases, however, will not be enough to offset historical losses in purchasing power for these programs.¹⁵
- ◆ Preliminary assessments suggest that the new federal tax benefits for higher education expenses (primarily the HOPE Scholarship and Lifetime Learning Tax Credits) are not being used to the extent originally anticipated. The U.S. Department of Education estimates that by the time the credits are fully implemented this year, 13.1 million Americans will receive benefits totaling \$9.7 billion. Those estimates

are being questioned by a number of institutional financial aid officials, however, who are encountering relatively little knowledge of or interest in the credits on their campuses.¹⁶

State Developments

- ◆ From 1996-97 to 1997-98, states increased their expenditures on undergraduate need-based aid from \$2.56 billion to \$2.76 billion. This change represents an increase of 7.6 percent, a rate higher than those of the previous two years but lower than rate increases in the early and mid 1990s. The pronounced shift toward non-need-based aid at this level continued, as funding for non-need based programs increased 20.3 percent between 1996-97 and 1997-98. States boosted spending in this category from \$458.5 million to \$551.8 million.¹⁷
- ◆ Over the five-year period from 1992-93 to 1997-98, state expenditures for non-need-based undergraduate aid increased approximately 160 percent, and non-need-based aid as a portion of state undergraduate aid grew from 9.9 percent to 16.7 percent. Although state expenditures for undergraduate need-based aid grew 42 percent between 1992-93 and 1997-98, the portion of spending dedicated to need-based undergraduate aid fell from 90 percent to 83 percent.¹⁸
- ◆ During the 1998 and 1999 legislative sessions, more than half the states considered and/or implemented merit-based scholarship programs.¹⁹ In 2000, lawmakers in California, Idaho, Mississippi, and Rhode Island will likely consider establishing merit-based scholarship programs.²⁰
- ◆ Some states with recently established merit-based aid programs are facing tough budget questions. New Mexico and Louisiana, for example, have reconsidered program eligibility criteria and award levels due to unanticipated demand—and therefore budget strain—resulting from these programs.²¹

¹⁶NASSGAP changed the format for Table 1, the report from which this data is derived, beginning in 1995-96 (27th Annual Survey).

Institutional Developments

- ◆ Increases in institutional aid to students outstripped increases in federal and state support between 1997-98 and 1998-99. Institutional and other grant expenditures increased 7.2 percent over the one-year period, while federal and state aid funding increased 2.9 and 4.6 percent respectively. The same holds for the past decade, when institutional and other grants increased 126 percent in inflation-adjusted dollars, while state and federal aid expenditures increased 65 and 69 percent, respectively.²²

Conclusion

The findings above suggest that things are relatively quiet on the college cost front. Increases in student charges continue to hover at their lowest level in more than a decade, and the financial aid available at the federal, state, and institutional levels has reached unprecedented heights. It is a scenario that may cause some to ask “what affordability crisis?”

Beneath this seemingly calm surface, however, troubling questions continue to simmer. Is it possible to comprehend the complex relationship between college costs and student charges in a way that will inform institutional management and state and federal policy? What can be done to ensure access to higher education for low-income families and historically underrepresented groups, particularly given the current policy emphasis on tax benefits, loans, and merit scholarships as financial aid tools?

These and related questions entail more than dollars and cents—they speak to our national values related to educational opportunity and social mobility. For states and their colleges and universities, they are questions that should be pondered in the glow of current surpluses rather than the gloom of future deficits.

Endnotes

- ¹ David Broder, “A Skeptical Electorate in Search of Leadership,” *The Washington Post*, 7 November 1999: A1.
- ² The College Board, *1999-2000 Annual Survey of Colleges* (data extracted from Standard Research Compilation Files).
- ³ The College Board, *Trends in Student Aid 1999*.
- ⁴ The College Board, *Trends in College Pricing 1999*.
- ⁵ Ibid.
- ⁶ Ibid.
- ⁷ Ibid.
- ⁸ Ibid.
- ⁹ Joel Hardi, “California Governor Proposes Big Increases for Colleges, and a Tuition Freeze,” *Academe Today*, 11 January 2000.
- ¹⁰ Sara Hebel, Peter Shmidt, Jeffrey Selingo, & Will Weissert. “The Outlook for Higher Education This Year in the 50 State Legislatures.” *The Chronicle of Higher Education*, 7 January 2000: A29.
- ¹¹ Warren Fiske. “Gilmore Wants to Freeze Tuitions Two More Years,” *The Virginian-Pilot*, 16 December 1999.
- ¹² Sara Hebel, “New York Governor Seeks Budget Increases for SUNY and CUNY,” *Academe Today*, 12 January 1999.
- ¹³ The College Board, *Trends in Student Aid 1999*.
- ¹⁴ Ibid.
- ¹⁵ Summary Report on FY2000 Federal Budget to AASCU Council of State Representatives, 21 November 1999.
- ¹⁶ Sara Hebel, “Dashed Hopes for Increasing Access to Higher Education,” *The Chronicle of Higher Education*, 22 October 1999: A33.
- ¹⁷ National Association of State Student Grant and Aid Programs (NASSGAP), *28th Annual Survey Report: 1996-97 Academic Year* (Albany, N.Y.: New York State Higher Education Services Corporation, 1998); National Association of State Student Grant and Aid Programs (NASSGAP), *29th Annual Survey Report: 1997-98 Academic Year* (Albany, N.Y.: New York State Higher Education Services Corporation, 1998)
- ¹⁸ Ibid.
- ¹⁹ Travis Reindl and Dana Brower. *State Student Financial Aid: Tough Choices and Trade-Offs for a New Generation* (Washington, D.C.: AASCU, 2000).
- ²⁰ Dan Smith, “Merit scholarships to be proposed in state of state,” *Capitol Alert*, 5 January 2000; Hebel, Schmidt, Selingo, & Weissert, op cit.
- ²¹ “Lottery Scholarships in Danger of Losing Funds,” *The Santa Fe New Mexican*, 12 November 1999; “The 1999 Legislature: What Passed...and what didn’t,” *Sunday Advocate* (Baton Rouge, LA.), 27 June 1999.
- ²² The College Board, *Trends in Student Aid 1999*.

Appendix A

Selected Student Charges for Undergraduates at AASCU Institutions, Academic Year 1999-2000

State	Institution	Resident Tuition & Fees	Non-Resident Tuition & Fees	Room & Board
Alabama	Alabama Agricultural and Mechanical University	\$2,332	\$4,264	\$2,678
	Alabama State University	\$2,820	\$5,340	\$3,700
	Auburn University at Montgomery	\$2,547	\$7,641	—
	Jacksonville State University	\$2,260	\$4,500	\$2,870
	Troy State University	\$2,900	\$5,560	\$3,854
	Troy State University Dothan	\$2,832	\$5,712	—
	Troy State University in Montgomery	\$2,630	\$5,240	—
	University of Alabama in Huntsville	\$3,112	\$6,516	\$3,780
	University of Montevallo	\$3,170	\$6,110	\$3,462
	University of North Alabama	\$2,632	\$4,864	\$3,672
	University of South Alabama	\$2,911	\$5,581	\$4,478
University of West Alabama	\$2,706	\$5,412	\$2,840	
Alaska	University of Alaska Anchorage	\$2,559	\$7,329	\$7,250
	University of Alaska Southeast	\$2,416	\$7,186	\$5,430
Arizona	Northern Arizona University	\$2,262	\$8,378	\$3,798
Arkansas	Arkansas State University	\$2,972	\$6,644	\$3,020
	Arkansas Tech University	\$2,462	\$4,814	\$3,280
	Henderson State University	\$2,493	\$4,773	\$3,192
	Southern Arkansas University	\$2,252	\$3,380	\$2,800
	University of Arkansas at Little Rock	\$3,405	\$8,175	—
	University of Arkansas at Monticello	\$2,530	\$5,290	\$2,720
University of Central Arkansas	\$3,238	\$5,902	\$3,150	
California	California Polytechnic State University, San Luis Obispo	\$2,135	\$9,515	\$5,560
	California State Polytechnic University, Pomona	\$1,777	\$9,157	\$5,802
	California State University, Bakersfield	\$1,801	\$9,181	\$4,783
	California State University, Chico	\$1,994	\$9,374	\$6,670
	California State University, Dominguez Hills	\$1,740	\$9,120	\$5,626
	California State University, Fresno	\$1,746	\$9,126	\$6,200
	California State University, Fullerton	\$1,809	\$9,189	\$6,084
	California State University, Hayward	\$1,683	\$9,063	—
	California State University, Long Beach	\$1,690	\$9,070	\$5,300
	California State University, Los Angeles	\$1,728	\$9,108	\$6,165
	California State University, Monterey Bay	\$1,815	\$9,195	\$5,938
	California State University, Northridge	\$1,814	\$9,194	\$6,600
	California State University, Sacramento	\$1,868	\$9,248	\$6,193
	California State University, San Bernardino	\$1,748	\$9,128	\$6,838
	California State University, San Marcos	\$1,694	\$9,074	—
California State University, Stanislaus	\$1,637	\$9,017	\$5,815	



State	Institution	Resident Tuition & Fees	Non-Resident Tuition & Fees	Room & Board
California	Humboldt State University	\$1,864	\$9,244	\$5,729
	San Diego State University	\$1,776	\$9,156	\$6,220
	San Francisco State University	\$1,826	\$9,206	\$6,787
	San Jose State University	\$1,861	\$9,241	\$6,534
	Sonoma State University	\$1,998	\$9,378	\$6,346
Colorado	Adams State College	\$2,092	\$6,302	\$5,080
	Fort Lewis College	\$2,219	\$8,671	\$4,784
	Mesa State College	\$2,123	\$6,512	\$5,048
	Metropolitan State College of Denver	\$2,542	\$9,193	—
	University of Colorado at Colorado Springs	\$2,776	\$9,762	\$4,845
	University of Colorado at Denver	\$2,418	\$11,544	—
	University of Northern Colorado	\$2,754	\$9,737	\$4,796
	University of Southern Colorado	\$2,246	\$8,870	\$4,661
Western State College of Colorado	\$2,221	\$7,733	\$5,190	
Connecticut	Central Connecticut State University	\$3,772	\$8,384	\$5,652
	Eastern Connecticut State University	\$3,754	\$8,366	\$5,684
	Southern Connecticut State University	\$3,709	\$8,321	\$5,934
	Western Connecticut State University	\$3,758	\$8,370	\$5,434
Delaware	Delaware State University	\$3,256	\$7,248	\$5,290
District of Columbia	Gallaudet University	\$7,240	—	\$7,130
	Howard University	\$9,330	—	\$4,404
	University of the District of Columbia	\$2,520	\$5,820	—
Florida	Florida Agricultural and Mechanical University	\$2,351	\$9,007	\$3,896
	Florida Atlantic University	\$2,253	\$8,909	\$4,993
	Florida International University	\$2,307	\$8,963	\$5,516
	University of Central Florida	\$2,327	\$8,983	\$5,279
	University of North Florida	\$2,300	\$8,956	\$5,030
	University of South Florida	\$2,281	\$8,937	\$4,863
	University of West Florida	\$2,329	\$8,985	\$4,532
Georgia	Albany State University	\$2,254	\$7,688	\$3,256
	Armstrong Atlantic State University	\$2,098	\$7,532	\$6,304
	Augusta State University	\$2,082	\$7,516	—
	Clayton College and State University	\$2,702	\$8,136	—
	Columbus State University	\$2,126	\$7,560	\$4,100
	Fort Valley State University	\$2,294	\$7,728	\$3,432
	Georgia College and State University	\$2,214	\$7,648	\$4,170
	Georgia Southern University	\$2,480	\$7,914	\$4,412
	Georgia Southwestern State University	\$2,312	\$7,746	\$3,484
	Kennesaw State University	\$2,306	\$7,740	—
	Macon State College	\$1,322	\$5,024	—
North Georgia College & State University	\$2,210	\$7,644	\$3,542	

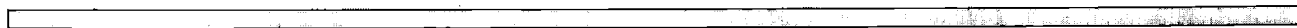


State	Institution	Resident Tuition & Fees	Non-Resident Tuition & Fees	Room & Board
Georgia	Savannah State University	\$2,356	\$7,790	\$4,084
	Southern Polytechnic State University	\$2,164	\$7,598	\$4,108
	State University of West Georgia	\$2,276	\$7,710	\$3,670
	Valdosta State University	\$2,290	\$7,724	\$3,780
Hawaii	University of Hawaii at Hilo	\$1,516	\$7,132	\$5,200
Idaho	Boise State University	\$2,303	\$8,183	\$3,558
	Idaho State University	\$2,398	\$8,638	\$3,780
	Lewis - Clark State College	\$2,204	\$7,476	\$3,400
Illinois	Chicago State University	\$3,581	\$8,165	\$5,700
	Eastern Illinois University	\$3,368	\$7,876	\$3,932
	Governors State University	\$2,398	\$6,814	-
	Illinois State University	\$4,210	\$10,465	\$4,116
	Northeastern Illinois University	\$2,969	\$7,493	-
	Northern Illinois University	\$4,090	\$7,150	\$4,416
	Southern Illinois University at Carbondale	\$3,936	\$6,801	\$3,872
	Southern Illinois University at Edwardsville	\$2,744	\$4,887	\$4,188
	University of Illinois at Springfield	\$3,146	\$8,726	\$4,932
Western Illinois University	\$3,820	\$6,550	\$5,148	
Indiana	Ball State University	\$4,598	\$10,758	\$4,520
	Indiana State University	\$3,426	\$8,554	\$4,791
	Indiana University - Purdue University Fort Wayne	\$3,534	\$8,160	—
	Indiana University - Purdue University Indianapolis	\$3,713	\$10,961	\$3,450
	Indiana University East	\$3,104	\$7,874	—
	Indiana University Kokomo	\$3,104	\$7,874	—
	Indiana University Northwest	\$3,128	\$7,898	—
	Indiana University South Bend	\$3,197	\$8,481	—
	Indiana University Southeast	\$3,092	\$7,862	—
	Purdue University: North Central Campus	\$3,210	\$7,709	—
University of Southern Indiana	\$2,828	\$6,840	\$4,586	
Iowa	University of Northern Iowa	\$2,988	\$7,748	\$3,926
Kansas	Emporia State University	\$2,086	\$6,552	\$3,681
	Fort Hays State University	\$2,063	\$6,532	\$3,805
	Pittsburg State University	\$2,172	\$6,638	\$3,670
	Washburn University of Topeka	\$3,140	\$7,010	\$3,735
	Wichita State University	\$2,573	\$9,026	\$4,195
Kentucky	Eastern Kentucky University	\$2,390	\$6,430	\$3,676
	Kentucky State University	\$2,300	\$6,340	\$3,446
	Morehead State University	\$2,440	\$6,480	\$3,488
	Murray State University	\$2,400	\$6,440	\$3,560

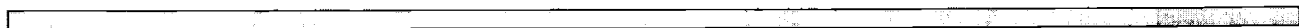
State	Institution	Resident Tuition & Fees	Non-Resident Tuition & Fees	Room & Board
Kentucky	Northern Kentucky University	\$2,480	\$6,520	\$3,396
	Western Kentucky University	\$2,390	\$6,430	\$3,528
Louisiana	Grambling State University	\$2,255	\$5,250	\$2,636
	Louisiana State University in Shreveport	\$2,500	\$6,390	—
	Louisiana Tech University	\$2,838	\$5,396	\$3,120
	McNeese State University	\$1,889	\$7,631	\$2,310
	Nicholls State University	\$2,118	\$6,390	\$2,850
	Northwestern State University	\$2,450	\$5,660	\$2,746
	Southeastern Louisiana University	\$2,210	\$7,538	\$2,620
	University of Louisiana at Lafayette	\$2,468	\$7,661	\$2,656
	University of Louisiana at Monroe	\$2,052	\$8,004	\$2,560
	University of New Orleans	\$2,362	\$7,888	\$5,292
Maine	University of Maine at Augusta	\$3,435	\$7,905	—
	University of Maine at Farmington	\$3,776	\$8,666	\$4,500
	University of Maine at Fort Kent	\$3,344	\$7,814	\$4,000
	University of Maine at Machias	\$3,445	\$7,975	\$4,330
	University of Maine at Presque Isle	\$3,390	\$7,860	\$4,048
	University of Southern Maine	\$4,192	\$10,672	\$4,926
Maryland	Bowie State University	\$3,664	\$8,981	\$4,662
	Coppin State College	\$3,272	\$8,104	\$5,274
	Frostburg State University	\$3,956	\$8,656	\$4,918
	Morgan State University	\$3,874	\$9,476	\$5,718
	Salisbury State University	\$4,156	\$8,550	\$5,590
	Towson University	\$4,520	\$10,524	\$5,540
	University of Maryland, Baltimore County	\$6,214	\$11,704	\$5,482
Massachusetts	Bridgewater State College	\$3,175	\$9,133	\$4,469
	Fitchburg State College	\$3,018	\$8,978	\$4,540
	Framingham State College	\$2,976	\$8,936	\$4,059
	Massachusetts College of Liberal Arts	\$3,432	\$9,392	\$5,146
	Salem State College	\$3,028	\$9,048	\$4,536
	University of Massachusetts Boston	\$4,402	\$12,532	—
	University of Massachusetts Dartmouth	\$4,379	\$12,033	\$5,317
	University of Massachusetts Lowell	\$4,255	\$10,892	\$4,836
	Westfield State College	\$2,974	\$8,934	\$4,164
Worcester State College	\$2,458	\$8,418	\$4,556	
Michigan	Central Michigan University	\$3,630	\$8,655	\$4,620
	Eastern Michigan University	\$3,650	\$8,540	\$4,842
	Ferris State University	\$4,195	\$8,803	\$5,110
	Grand Valley State University	\$4,108	\$8,890	\$4,910
	Lake Superior State University	\$3,840	\$7,542	\$4,931
	Michigan Technological University	\$4,491	\$10,704	\$4,758
	Northern Michigan University	\$3,146	\$5,582	\$4,478

State	Institution	Resident Tuition & Fees	Non-Resident Tuition & Fees	Room & Board
Michigan	Oakland University	\$3,968	\$10,928	\$4,716
	Saginaw Valley State University	\$3,509	\$7,049	\$4,800
	University of Michigan: Dearborn	\$5,114	\$14,084	—
	University of Michigan: Flint	\$3,894	\$11,084	—
	Western Michigan University	\$3,932	\$9,002	\$4,831
Minnesota	Bemidji State University	\$3,409	\$6,549	\$4,178
	Metropolitan State University	\$2,836	\$6,039	—
	Minnesota State University, Mankato	\$2,996	\$5,796	\$3,344
	Moorhead State University	\$3,010	\$6,188	\$3,264
	Southwest State University	\$3,236	\$6,533	\$3,524
	St. Cloud State University	\$3,006	\$6,035	\$3,422
	University of Minnesota Duluth	\$4,935	\$12,705	\$4,132
	Winona State University	\$3,174	\$6,444	\$3,400
Mississippi	Alcorn State University	\$2,685	\$5,546	\$2,656
	Delta State University	\$2,596	\$5,546	\$2,730
	Jackson State University	\$2,688	\$5,546	\$3,565
	Mississippi University for Women	\$2,556	\$5,546	\$2,590
	Mississippi Valley State University	\$2,646	\$5,546	\$2,830
	University of Southern Mississippi	\$2,870	\$5,972	\$3,300
Missouri	Central Missouri State University	\$2,970	\$5,940	\$4,104
	Harris Stowe State College	\$2,079	\$4,061	—
	Lincoln University	\$2,456	\$4,895	\$3,274
	Missouri Southern State College	\$2,391	\$4,476	\$3,485
	Missouri Western State College	\$2,774	\$4,982	\$3,600
	Northwest Missouri State University	\$3,068	-	\$4,010
	Southeast Missouri State University	\$3,375	\$5,955	\$4,321
	Southwest Missouri State University	\$3,400	\$6,430	\$3,700
	Truman State University	\$3,544	\$6,344	\$4,400
University of Missouri - St. Louis	\$4,796	\$12,710	\$4,879	
Montana	Montana State University - Billings	\$2,909	\$7,872	—
	Montana State University - Northern	\$2,692	\$6,774	\$3,850
	Montana Tech of The University of Montana	\$2,867	\$8,091	\$4,090
	Western Montana College of The University of Montana	\$2,593	\$5,595	\$3,960
Nebraska	Chadron State College	\$2,263	\$3,958	\$3,492
	Peru State College	\$2,251	\$4,126	\$3,304
	University of Nebraska - Kearney	\$2,729	\$4,581	\$3,430
	University of Nebraska - Omaha	\$2,823	\$6,888	—
	Wayne State College	\$2,271	\$4,146	\$3,300
Nevada	University of Nevada, Las Vegas	\$2,191	\$8,538	\$5,694

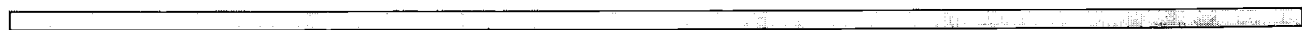
State	Institution	Resident Tuition & Fees	Non-Resident Tuition & Fees	Room & Board
New Hampshire	College for Lifelong Learning	\$4,910	\$5,450	—
	Keene State College	\$5,036	\$10,346	\$4,938
	Plymouth State College of the University System of New Hampshire	\$5,032	\$10,342	\$5,030
New Jersey	Kean University	\$4,384	\$6,081	\$5,522
	Montclair State University	\$4,051	\$5,846	\$6,248
	New Jersey City University	\$4,366	\$7,554	\$5,400
	New Jersey Institute of Technology	\$6,480	\$10,824	\$7,092
	Richard Stockton College of New Jersey	\$4,125	\$6,030	\$5,534
	Rowan University	\$4,921	\$8,671	\$5,667
	The College of New Jersey	\$5,819	\$9,081	\$7,473
	Thomas Edison State College	\$2,400	\$3,400	—
	William Paterson University of New Jersey	\$4,686	\$7,356	\$6,200
New Mexico	Eastern New Mexico University	\$1,830	\$6,714	\$3,250
	Western New Mexico University	\$1,768	\$6,456	\$3,138
New York	City University of New York: Baruch College	\$3,350	\$6,950	—
	City University of New York: Brooklyn College	\$3,394	\$6,994	—
	City University of New York: City College	\$3,308	\$6,908	—
	City University of New York: College of Staten Island	\$3,358	\$6,958	—
	City University of New York: Hunter College	\$3,347	\$6,947	—
	City University of New York: John Jay College of Criminal Justice	\$3,309	\$6,909	—
	City University of New York: Lehman College	\$3,320	\$6,920	—
	City University of New York: Medgar Evers College	\$3,282	\$6,882	—
	City University of New York: Queens College	\$3,403	\$7,003	—
	City University of New York: York College	\$3,292	\$6,892	—
	University of New York at New Paltz, SUNY	\$3,915	\$8,815	\$5,246
	University of New York at Oswego, SUNY	\$3,975	\$8,875	\$6,160
	University of New York at Purchase, SUNY	\$4,024	\$8,924	\$5,842
	University of New York College at Brockport, SUNY	\$4,014	\$8,914	\$5,410
	University of New York College at Buffalo, SUNY	\$3,909	\$8,809	\$5,070
	University of New York College at Cortland, SUNY	\$4,104	\$9,004	\$5,560
	University of New York College at Fredonia, SUNY	\$4,175	\$9,075	\$5,400
	University of New York College at Geneseo, SUNY	\$4,221	\$9,121	\$4,940
	University of New York College at Old Westbury, SUNY	\$3,921	\$8,821	\$5,345
	University of New York College at Oneonta, SUNY	\$4,123	\$9,023	\$5,456
	University of New York College at Plattsburgh, SUNY	\$3,957	\$8,857	\$4,850
	University of New York College at Potsdam, SUNY	\$4,075	\$8,975	\$5,710
	University of New York College of Technology at Alfred, SUNY	\$3,790	\$5,590	\$5,258
	University of New York Empire State College, SUNY	\$4,145	\$9,045	—
	University of New York Institute of Technology at Utica/Rome, SUNY	\$3,975	\$8,875	\$6,000



State	Institution	Resident Tuition & Fees	Non-Resident Tuition & Fees	Room & Board
North Carolina	Appalachian State University	\$1,973	\$9,243	\$3,570
	East Carolina University	\$1,998	\$9,564	\$4,620
	Elizabeth City State University	\$1,631	\$8,049	\$3,898
	Fayetteville State University	\$1,770	\$9,040	\$3,800
	North Carolina Agricultural and Technical State University	\$1,889	\$9,159	\$4,010
	North Carolina Central University	\$1,887	\$9,157	\$3,904
	University of North Carolina at Asheville	\$1,960	\$8,580	\$4,240
	University of North Carolina at Charlotte	\$1,920	\$9,190	\$4,166
	University of North Carolina at Greensboro	\$2,148	\$10,652	\$4,064
	University of North Carolina at Pembroke	\$1,796	\$9,066	\$3,358
	University of North Carolina at Wilmington	\$2,054	\$9,324	\$5,136
	Western Carolina University	\$2,082	\$9,352	\$3,380
	Winston-Salem State University	\$1,774	\$8,192	\$3,503
North Dakota	Dickinson State University	\$2,302	\$5,485	\$2,780
	Mayville State University	\$3,106	\$6,289	\$3,042
	Minot State University	\$2,331	\$5,755	\$2,766
	Valley City State University	\$3,097	\$6,280	\$2,800
Ohio	Bowling Green State University	\$4,874	\$10,422	\$4,612
	Central State University	\$3,453	\$7,566	\$5,000
	Cleveland State University	\$3,904	\$7,648	\$4,962
	Ohio State University: Newark Campus	\$3,528	\$11,097	—
	Shawnee State University	\$3,294	\$5,697	\$4,431
	University of Akron	\$4,302	\$10,503	\$5,010
	Wright State University	\$4,128	\$8,256	\$4,730
	Youngstown State University	\$3,639	\$7,800	\$4,695
Oklahoma	East Central University	\$1,919	\$4,439	\$2,226
	Northeastern State University	\$1,909	\$4,564	\$2,674
	Northwestern Oklahoma State University	\$1,871	\$4,391	\$2,316
	Oklahoma Panhandle State University	\$1,911	\$4,431	\$2,868
	Rogers University	\$1,822	\$4,193	—
	Southeastern Oklahoma State University	\$1,964	\$4,319	\$2,538
	Southwestern Oklahoma State University	\$1,879	\$4,399	\$2,400
	University of Central Oklahoma	\$1,936	\$4,456	\$2,783
	University of Science and Arts of Oklahoma	\$1,878	\$4,398	\$2,320
Oregon	Eastern Oregon University	\$3,273	\$3,273	\$4,615
	Oregon Institute of Technology	\$3,378	\$11,436	\$4,839
	Portland State University	\$3,438	\$11,631	—
	Southern Oregon University	\$3,234	\$9,897	\$4,928
	Western Oregon University	\$3,276	\$10,293	\$4,400
Pennsylvania	Bloomsburg University of Pennsylvania	\$4,455	\$9,883	\$3,784
	California University of Pennsylvania	\$4,742	\$10,170	\$4,526



State	Institution	Resident Tuition & Fees	Non-Resident Tuition & Fees	Room & Board
Pennsylvania	Cheyney University of Pennsylvania	\$4,173	\$9,601	\$4,793
	Clarion University of Pennsylvania	\$4,713	\$6,523	\$3,712
	East Stroudsburg University of Pennsylvania	\$4,492	\$9,920	\$3,938
	Edinboro University of Pennsylvania	\$4,358	\$6,168	\$3,788
	Indiana University of Pennsylvania	\$4,397	\$9,825	\$3,782
	Kutztown University of Pennsylvania	\$4,448	\$10,236	\$4,082
	Lock Haven University of Pennsylvania	\$4,260	\$7,688	\$4,292
	Mansfield University of Pennsylvania	\$4,610	\$10,038	\$3,852
	Millersville University of Pennsylvania	\$4,595	\$10,023	\$4,730
	Penn State Abington	\$6,312	\$9,302	—
	Penn State Altoona College	\$6,332	\$9,692	\$5,040
	Penn State Erie Behrend College	\$6,436	\$12,110	\$5,040
	Penn State Harrisburg Capital College	\$6,416	\$12,090	\$5,040
	Shippensburg University of Pennsylvania	\$4,550	\$9,978	\$4,126
	Slippery Rock University of Pennsylvania	\$4,484	\$9,912	\$3,810
	University of Pittsburgh at Bradford	\$6,572	\$13,888	\$5,080
	University of Pittsburgh at Greensburg	\$6,582	\$13,898	\$4,760
	University of Pittsburgh at Johnstown	\$6,630	\$13,946	\$5,190
	West Chester University of Pennsylvania	\$4,422	\$9,850	\$4,636
	Puerto Rico	University of Puerto Rico: Bayamon		
Technological University College		\$970	—	—
University of Puerto Rico: Cayey University College		\$1,020	—	—
University of Puerto Rico: Humacao University College		\$1,125	—	—
University of Puerto Rico: Mayaguez Campus		\$1,010	—	\$4,800
University of Puerto Rico: Rio Piedras Campus	\$1,120	\$2,620	\$4,130	
Rhode Island	Rhode Island College	\$3,260	\$8,185	\$5,640
South Carolina	Clemson University	\$3,670	\$9,556	\$4,130
	Coastal Carolina University	\$3,340	\$9,280	\$4,970
	College of Charleston	\$3,520	\$7,210	\$4,070
	Francis Marion University	\$3,470	\$6,940	\$3,550
	Lander University	\$3,770	\$5,250	\$3,497
	The Citadel	\$4,306	\$9,902	\$4,716
	University of South Carolina at Aiken	\$3,408	\$7,934	\$3,940
	University of South Carolina at Spartanburg	\$3,478	\$8,004	\$3,950
Winthrop University	\$4,146	\$7,454	\$2,420	
South Dakota	Black Hills State University	\$3,153	\$6,973	\$3,026
	Dakota State University	\$3,380	\$7,200	\$2,950
	Northern State University	\$3,075	\$6,895	\$2,945
	South Dakota School of Mines and Technology	\$3,198	\$7,018	\$3,122
	South Dakota State University	\$3,148	\$6,968	\$3,029
	University of South Dakota	\$3,243	\$7,063	\$3,154
Tennessee	Austin Peay State University	\$2,584	\$7,700	\$3,290



State	Institution	Resident Tuition & Fees	Non-Resident Tuition & Fees	Room & Board
	East Tennessee State University	\$2,532	\$7,648	\$3,350
	Middle Tennessee State University	\$2,516	\$7,632	\$3,290
	Tennessee State University	\$2,422	\$7,538	\$3,600
	Tennessee Technological University	\$2,412	\$7,528	\$4,064
	University of Memphis	\$2,818	\$8,078	\$3,700
	University of Tennessee Chattanooga	\$2,660	\$7,920	—
	University of Tennessee Martin	\$2,656	\$7,916	\$3,686
Texas	Angelo State University	\$2,320	\$8,800	\$4,236
	Lamar University: Beaumont	\$2,376	\$8,856	\$3,726
	Midwestern State University	\$2,426	\$8,906	\$3,817
	Prairie View A&M University	\$2,644	\$9,124	\$4,215
	Sam Houston State University	\$2,464	\$8,944	\$3,690
	Southwest Texas State University	\$3,056	\$9,536	\$4,104
	Stephen F. Austin State University	\$2,698	\$9,088	\$4,386
	Sul Ross State University	\$2,150	\$8,630	\$3,530
	Tarleton State University	\$2,500	\$8,980	\$3,500
	Texas A&M International University	\$2,358	\$8,838	—
	Texas A&M University - Commerce	\$2,094	\$7,278	\$4,088
	Texas A&M University - Corpus Christi	\$2,558	\$9,038	\$5,249
	Texas A&M University - Kingsville	\$2,482	\$8,692	\$3,840
	Texas A&M University - Texarkana	\$2,112	\$8,592	—
	Texas Southern University	\$3,404	\$10,004	\$4,000
	Texas Woman's University	\$2,484	\$8,964	\$3,830
	University of Houston: Clear Lake	\$2,572	\$9,052	—
	University of Houston: Downtown	\$1,902	\$8,382	—
	University of Houston: Victoria	\$2,430	\$8,910	—
	University of North Texas	\$2,710	\$9,100	\$3,940
	University of Texas at Arlington	\$2,898	\$9,378	—
	University of Texas at Brownsville	\$1,722	\$8,682	—
	University of Texas at Dallas	\$3,605	\$10,085	—
	University of Texas at San Antonio	\$2,974	\$9,454	\$5,876
	University of Texas at Tyler	\$2,732	\$8,212	—
	University of Texas of the Permian Basin	\$2,460	\$8,940	—
	University of Texas: Pan American	\$2,066	\$8,396	\$2,622
	West Texas A&M University	\$1,974	\$7,159	\$3,310
Utah	Southern Utah University	\$1,965	\$6,195	\$3,300
	Utah Valley State College	\$1,629	\$5,070	—
	Weber State University	\$2,042	\$6,058	\$3,196
Vermont	Castleton State College	\$5,020	\$10,516	\$5,298
	Johnson State College	\$5,005	\$10,501	\$5,323
	Lyndon State College	\$4,864	\$10,360	\$5,298
Virginia	George Mason University	\$3,756	\$12,516	\$6,198
	James Madison University	\$3,926	\$9,532	\$5,182



State	Institution	Resident Tuition & Fees	Non-Resident Tuition & Fees	Room & Board
Virginia	Longwood College	\$3,924	\$9,370	\$4,620
	Norfolk State University	\$3,049	\$8,599	\$5,114
	Old Dominion University	\$3,796	\$11,386	\$5,000
	Radford University	\$2,888	\$8,642	\$4,770
	The University of Virginia's College at Wise	\$3,192	\$9,286	\$4,564
Washington	Central Washington University	\$3,054	\$10,053	\$4,790
	Eastern Washington University	\$2,802	\$9,696	\$4,521
	Western Washington University	\$2,991	\$10,011	\$4,811
West Virginia	Bluefield State College	\$2,178	\$5,290	—
	Concord College	\$2,538	\$5,580	\$4,018
	Fairmont State College	\$2,244	\$5,228	\$3,808
	Glenville State College	\$2,208	\$5,208	\$3,710
	Marshall University	\$2,440	\$6,512	\$4,696
	Shepherd College	\$2,430	\$5,754	\$4,112
	West Liberty State College	\$2,320	\$5,760	\$3,200
	West Virginia State College	\$2,386	\$5,588	\$3,600
	West Virginia University Institute of Technology	\$2,646	\$6,458	\$4,048
Wisconsin	University of Wisconsin, Eau Claire	\$3,210	\$10,074	\$3,301
	University of Wisconsin, Green Bay	\$3,150	\$10,014	\$2,920
	University of Wisconsin, La Crosse	\$3,242	\$10,106	\$3,300
	University of Wisconsin, Milwaukee	\$3,743	\$12,363	\$4,626
	University of Wisconsin, Oshkosh	\$3,001	\$9,865	\$3,130
	University of Wisconsin, Parkside	\$3,045	\$9,909	\$4,360
	University of Wisconsin, Platteville	\$3,134	\$9,998	\$3,458
	University of Wisconsin, River Falls	\$3,073	\$9,937	\$3,366
	University of Wisconsin, Stevens Point	\$3,140	\$10,004	\$3,524
	University of Wisconsin, Stout	\$3,259	\$10,123	\$3,382
	University of Wisconsin, Superior	\$2,974	\$9,838	\$3,426
University of Wisconsin, Whitewater	\$3,108	\$9,972	\$3,364	
Guam	University of Guam	\$2,250	\$5,670	\$2,905
Virgin Islands	University of the Virgin Islands	\$2,856	\$8,316	\$5,466

Current as of November 30, 1999

Note: Institutions missing from this list either did not respond to the survey, or did not report the requisite information for calculating charges.

BEST COPY AVAILABLE

Appendix B

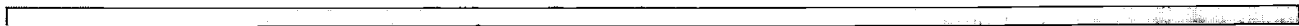
Selected Student Charges for Undergraduates at NASULGC Institutions, Academic Year 1999-2000

State	Institution	Resident Tuition & Fees	Non-Resident Tuition & Fees	Room & Board
Alabama	Alabama Agricultural and Mechanical University	\$2,332	\$4,264	\$2,678
	Auburn University	\$2,976	\$8,766	\$5,100
	Tuskegee University	\$9,800	—	\$5,098
	University of Alabama	\$2,872	\$7,722	\$5,254
	University of Alabama at Birmingham	\$3,360	\$6,090	—
	University of Alabama in Huntsville	\$3,112	\$6,516	\$3,780
Alaska	University of Alaska Fairbanks	\$3,202	\$7,972	\$4,600
Arizona	Arizona State University	\$2,259	\$9,411	\$5,010
	Northern Arizona University	\$2,262	\$8,378	\$3,798
	University of Arizona	\$2,264	\$9,416	\$5,548
Arkansas	University of Arkansas, Fayetteville	\$3,534	\$8,874	\$4,388
	University of Arkansas at Pine Bluff	\$2,364	\$5,166	\$3,814
California	California Polytechnic State University, San Luis Obispo	\$2,135	\$9,515	\$5,560
	California State University, Fresno	\$1,746	\$9,126	\$6,200
	California State University, Fullerton	\$1,809	\$9,189	\$6,084
	California State University, Sacramento	\$1,868	\$9,248	\$6,193
	San Diego State University	\$1,776	\$9,156	\$6,220
	San Francisco State University	\$1,826	\$9,206	\$6,787
	University of California, Berkeley	\$4,047	\$14,221	\$7,788
	University of California, Davis	\$4,034	\$10,322	\$7,163
	University of California, Irvine	\$3,871	\$14,045	\$6,424
	University of California, Los Angeles	\$3,678	\$13,851	\$7,285
	University of California, Riverside	\$3,936	\$13,509	\$6,579
	University of California, San Diego	\$3,851	\$14,024	\$7,296
	University of California, Santa Barbara	\$3,747	\$13,920	\$7,183
University of California, Santa Cruz	\$3,848	\$14,039	\$7,041	
Colorado	Colorado State University	\$3,062	\$10,748	\$4,902
	University of Colorado at Boulder	\$3,153	\$15,933	\$5,202
Connecticut	University of Connecticut	\$5,398	\$13,916	\$5,694
Delaware	Delaware State University	\$3,256	\$7,248	\$5,290
	University of Delaware	\$5,008	\$13,378	\$5,132
District of Columbia	University of the District of Columbia	\$2,520	\$5,820	—

State	Institution	Resident Tuition & Fees	Non-Resident Tuition & Fees	Room & Board
Florida	Florida Agricultural and Mechanical University	\$2,351	\$9,007	\$3,896
	Florida Atlantic University	\$2,253	\$8,909	\$4,993
	Florida International University	\$2,307	\$8,963	\$5,516
	Florida State University	\$2,221	\$8,877	\$4,951
	University of Central Florida	\$2,327	\$8,983	\$5,279
	University of Florida	\$2,142	\$8,798	\$4,841
	University of South Florida	\$2,281	\$8,937	\$4,863
Georgia	Fort Valley State University	\$2,294	\$7,728	\$3,432
	Georgia Institute of Technology	\$3,107	\$10,349	\$5,700
	Georgia State University	\$2,882	\$10,124	—
	University of Georgia	\$3,034	\$10,276	\$4,902
Hawaii	University of Hawaii at Manoa	\$3,259	\$9,739	\$5,200
Idaho	Idaho State University	\$2,398	\$8,638	\$3,780
	University of Idaho	\$2,348	\$8,348	\$4,078
Illinois	Southern Illinois University at Carbondale	\$3,936	\$6,801	\$3,872
	University of Illinois at Springfield	\$4,648	\$10,924	\$6,760
	University of Illinois at Chicago	\$4,526	\$11,618	\$5,760
	University of Illinois at Urbana - Champaign	\$3,146	\$8,726	\$4,932
Indiana	Indiana University - Purdue University Indianapolis	\$3,713	\$10,961	\$3,450
	Purdue University	\$3,724	\$12,348	\$5,284
Iowa	Iowa State University	\$3,049	\$9,609	\$4,171
	University of Iowa	\$3,038	\$10,480	\$4,188
Kansas	Kansas State University	\$2,592	\$9,195	\$3,950
	University of Kansas	\$2,518	\$9,121	\$3,941
	Wichita State University	\$2,573	\$9,026	\$4,195
Kentucky	Kentucky State University	\$2,300	\$6,340	\$3,446
	Northern Kentucky University	\$2,480	\$6,520	\$3,396
	University of Kentucky	\$3,456	\$9,216	\$3,822
	University of Louisville	\$3,246	\$9,166	\$3,700
Louisiana	Louisiana State University and Agricultural and Mechanical College	\$2,881	\$7,081	\$4,130
	Louisiana Tech University	\$2,838	\$5,396	\$3,120
	Southern University and Agricultural and Mechanical College	\$2,286	\$8,078	\$5,600
	University of New Orleans	\$2,362	\$7,888	\$5,292
Maine	University of Maine	\$4,656	\$11,946	\$5,186

State	Institution	Resident Tuition & Fees	Non-Resident Tuition & Fees	Room & Board
Maryland	Towson University	\$4,520	\$10,524	\$5,540
	University of Maryland, Baltimore County	\$6,214	\$11,704	\$5,482
	University of Maryland, College Park	\$4,939	\$11,827	\$6,216
	University of Maryland Eastern Shore	\$3,883	\$8,443	\$4,730
Massachusetts	Massachusetts Institute of Technology	\$25,000	—	\$6,900
	University of Massachusetts Amherst	\$5,489	\$13,643	\$4,986
	University of Massachusetts Boston	\$4,402	\$12,532	—
Michigan	Michigan State University	\$5,036	\$12,446	\$4,298
	Michigan Technological University	\$4,491	\$10,704	\$4,758
	Oakland University	\$3,968	\$10,928	\$4,716
	University of Michigan	\$6,270	\$19,698	\$5,614
	Wayne State University	\$3,583	\$8,023	—
	Western Michigan University	\$3,932	\$9,002	\$4,831
Minnesota	University of Minnesota Duluth	\$4,935	\$12,705	\$4,132
	University of Minnesota	\$4,649	\$12,789	\$4,670
Mississippi	Alcorn State University	\$2,685	\$5,546	\$2,656
	Mississippi State University	\$3,017	\$6,119	\$3,510
	University of Mississippi	\$3,053	\$6,155	\$3,580
	University of Southern Mississippi	\$2,870	\$5,972	\$3,300
Missouri	Lincoln University	\$2,456	\$4,895	\$3,274
	University of Missouri - Columbia	\$4,641	\$12,555	\$4,700
	University of Missouri - Kansas City	\$4,587	\$12,501	\$4,775
	University of Missouri - Rolla	\$4,800	\$12,714	\$4,557
	University of Missouri - St. Louis	\$4,796	\$12,710	\$4,879
Montana	Montana State University	\$2,976	\$8,725	\$4,552
	University of Montana	\$2,911	\$8,021	\$4,154
Nebraska	University of Nebraska - Lincoln	\$3,298	\$7,805	\$4,070
Nevada	University of Nevada, Las Vegas	\$2,191	\$8,538	\$5,694
	University of Nevada, Reno	\$2,309	\$8,656	\$5,000
New Hampshire	University of New Hampshire	\$6,939	\$15,829	\$4,798
New Jersey	Montclair State University	\$4,051	\$5,846	\$6,248
	New Jersey Institute of Technology	\$6,480	\$10,824	\$7,092
	Rutgers, The State University of New Jersey: Rutgers College	\$6,072	\$11,002	\$6,415
	Rutgers, The State University of New Jersey: University College New Brunswick	\$5,193	\$10,123	—

State	Institution	Resident Tuition & Fees	Non-Resident Tuition & Fees	Room & Board
New Mexico	New Mexico State University	\$2,502	\$8,166	\$3,726
	University of New Mexico	\$2,430	\$9,172	\$4,750
New York	University of New York at Albany, SUNY	\$4,453	\$9,353	\$5,828
	University of New York at Binghamton, SUNY	\$4,416	\$9,316	\$5,516
	University of New York at Buffalo, SUNY	\$4,655	\$9,555	\$5,804
	University of New York at Stony Brook, SUNY	\$4,141	\$9,041	\$6,222
North Carolina	East Carolina University	\$1,998	\$9,564	\$4,620
	North Carolina Agricultural and Technical State University	\$1,889	\$9,159	\$4,010
	North Carolina State University	\$2,414	\$11,580	\$4,450
	University of North Carolina at Chapel Hill	\$2,365	\$11,531	\$5,430
	University of North Carolina at Charlotte	\$1,920	\$9,190	\$4,166
	University of North Carolina at Greensboro	\$2,148	\$10,652	\$4,064
North Dakota	North Dakota State University	\$2,886	\$7,028	\$3,461
	University of North Dakota	\$2,956	\$7,098	\$3,456
Ohio	Bowling Green State University	\$4,874	\$10,422	\$4,612
	Cleveland State University	\$3,904	\$7,648	\$4,962
	Kent State University	\$5,014	\$9,918	\$4,530
	Miami University	\$6,116	\$12,770	\$5,330
	The Ohio State University	\$4,134	\$12,087	\$6,264
	Ohio University	\$4,800	\$10,101	\$5,484
	University of Akron	\$4,302	\$10,503	\$5,010
	University of Cincinnati	\$4,998	\$12,879	\$6,399
	University of Toledo	\$4,416	\$10,785	\$5,096
Wright State University	\$4,128	\$8,256	\$4,730	
Oklahoma	Langston University	\$2,092	\$4,612	\$2,964
	Oklahoma State University	\$2,412	\$6,492	\$4,736
	University of Oklahoma	\$2,625	\$6,705	\$5,480
Oregon	Oregon State University	\$3,561	\$12,405	\$5,295
	Portland State University	\$3,438	\$11,631	—
	University of Oregon	\$3,810	\$13,197	\$5,690
Pennsylvania	Indiana University of Pennsylvania	\$4,397	\$9,825	\$3,782
	The Pennsylvania State University	\$6,436	\$13,552	\$4,698
	Temple University	\$6,622	\$11,740	\$6,302
	University of Pittsburgh	\$6,698	\$14,014	\$5,766
Rhode Island	University of Rhode Island	\$4,928	\$13,148	\$6,378



State	Institution	Resident Tuition & Fees	Non-Resident Tuition & Fees	Room & Board
South Carolina	Clemson University	\$3,670	\$9,556	\$4,130
	South Carolina State University	\$3,510	\$6,702	\$3,176
	University of South Carolina	\$3,765	\$9,839	\$4,404
South Dakota	South Dakota State University	\$3,148	\$6,968	\$3,029
	University of South Dakota	\$3,243	\$7,063	\$3,154
Tennessee	Middle Tennessee State University	\$2,516	\$7,632	\$3,290
	Tennessee State University	\$2,422	\$7,538	\$3,600
	University of Memphis	\$2,818	\$8,078	\$3,700
	University of Tennessee, Knoxville	\$3,104	\$9,172	\$4,092
Texas	Prairie View A&M University	\$2,644	\$9,124	\$4,215
	Texas A&M University	\$2,251	\$8,581	\$4,590
	Texas Tech University	\$1,797	\$8,277	\$4,887
	University of Houston	\$2,333	\$8,813	\$4,513
	University of North Texas	\$2,710	\$9,100	\$3,940
	University of Texas at Arlington	\$2,898	\$9,378	—
	University of Texas at Austin	\$3,115	\$9,595	\$5,114
	University of Texas at San Antonio	\$2,974	\$9,454	\$5,876
Utah	University of Utah	\$2,790	\$8,495	\$5,940
	Utah State University	\$2,314	\$7,003	\$4,770
Vermont	University of Vermont	\$8,044	\$19,252	\$5,620
Virginia	University of Virginia	\$4,134	\$16,607	\$4,550
	Virginia Commonwealth University	\$3,587	\$13,041	\$4,733
	Virginia Polytechnic Institute and State University	\$3,620	\$12,666	\$4,382
	Virginia State University	\$3,086	\$8,660	\$5,096
Washington	University of Washington	\$3,639	\$12,030	\$4,905
	Washington State University	\$3,662	\$10,696	\$4,976
West Virginia	Marshall University	\$2,440	\$6,512	\$4,696
	West Virginia State College	\$2,386	\$5,588	\$3,600
	West Virginia University	\$2,586	\$7,920	\$4,990
Wisconsin	University of Wisconsin, Madison	\$3,738	\$13,052	\$4,383
	University of Wisconsin, Milwaukee	\$3,743	\$12,363	\$4,626
Wyoming	University of Wyoming	\$2,456	\$7,724	\$4,446

BEST COPY AVAILABLE



State	Institution	Resident Tuition & Fees	Non-Resident Tuition & Fees	Room & Board
Outlying Areas				
Guam	University of Guam	\$2,250	\$5,670	\$2,905
Puerto Rico	University of Puerto Rico: Mayaguez Campus	\$1,010	—	\$4,800
	University of Puerto Rico: Rio Piedras Campus	\$1,120	\$2,620	\$4,130
Virgin Islands	University of the Virgin Islands	\$2,856	\$8,316	\$5,466

Current as of November 30, 1999

Note: Institutions missing from this list either did not respond to the survey, or did not report the requisite information for calculating charges.

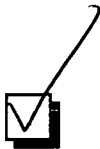


U.S. Department of Education
Office of Educational Research and Improvement (OERI)
National Library of Education (NLE)
Educational Resources Information Center (ERIC)



NOTICE

REPRODUCTION BASIS



This document is covered by a signed “Reproduction Release (Blanket) form (on file within the ERIC system), encompassing all or classes of documents from its source organization and, therefore, does not require a “Specific Document” Release form.



This document is Federally-funded, or carries its own permission to reproduce, or is otherwise in the public domain and, therefore, may be reproduced by ERIC without a signed Reproduction Release form (either “Specific Document” or “Blanket”).