

DOCUMENT RESUME

ED 421 950

HE 031 488

TITLE Racial and Ethnic Differences in Participation in Higher Education. Indicator of the Month.
INSTITUTION National Center for Education Statistics (ED), Washington, DC.
REPORT NO NCES-98-012
PUB DATE 1998-09-00
NOTE 4p.; Extracted from "The Condition of Education 1997"; see ED 404 766.
AVAILABLE FROM National Education Data Resource Center; phone: 703-845-3151; e-mail: nedrc@inet.ed.gov; World Wide Web: <http://www.ed.gov/NCES/pubs/ce>
PUB TYPE Numerical/Quantitative Data (110)
EDRS PRICE MF01/PC01 Plus Postage.
DESCRIPTORS Age Differences; *Black Students; Enrollment Rate; *Enrollment Trends; *Ethnic Groups; Higher Education; *Hispanic Americans; Minority Groups; *Racial Differences; Statistical Data; Student Participation; Tables (Data); Two Year Colleges

ABSTRACT

This brief report summarizes data on racial and ethnic differences in participation in higher education. Major findings include: (1) between 1993 and 1995, white high school graduates aged 18-24 enrolled in college at a rate 9 percentage points higher than blacks and Hispanics; (2) between 1972 and 1995, the college enrollment rate for whites aged 18-24 grew 11 percent and for blacks 8 percent; (3) between 1993 and 1995, enrollment rates in two-year institutions were similar for white and black high school graduates and higher for Hispanics; however, both blacks and Hispanics were substantially less likely than whites to be enrolled in four-year institutions; and (4) enrollment rates for high school graduates aged 25 or older were much lower than for those aged 18-24; these rates were similar for whites, blacks, and Hispanics. A chart and two graphs show the percentage of high school graduates enrolled in college, by age and race/ethnicity for selected years from 1972 through 1995. (DB)

* Reproductions supplied by EDRS are the best that can be made *
* from the original document. *

**Racial and ethnic differences in
participation in higher education**

September 1998

ED 421 950

1/E031 488

U.S. DEPARTMENT OF EDUCATION
Office of Educational Research and Improvement
EDUCATIONAL RESOURCES INFORMATION
CENTER (ERIC)
 This document has been reproduced as
received from the person or organization
originating it.
 Minor changes have been made to
improve reproduction quality.
 Points of view or opinions stated in this
document do not necessarily represent
official OERI position or policy.



September 1998

Racial and ethnic differences in participation in higher education

Racial and ethnic differences in college enrollment rates may reflect differences in access to and persistence in higher education for groups with varying social and economic backgrounds. Differing enrollment rates are also a leading indicator of future differences in the earnings and productivity associated with postsecondary education. The college enrollment rate for 18- to 24-year-olds is influenced by the number who enroll immediately after graduating from high school, the number who delay entry, and the number of years individuals in both of these groups stay in higher education.

- Between 1993 and 1995, white high school graduates aged 18–24 were more likely to be enrolled in college than were their black and Hispanic counterparts. For these years, the average enrollment rate for whites was 9 percentage points higher than that of both blacks and Hispanics.
- The percentage of high school graduates aged 18–24 enrolled in college was higher in 1995 than in 1972 for whites and blacks. During this period, the college enrollment rates for whites grew substantially (11 percentage points), with most of the growth occurring after 1981. College enrollment rates for blacks of the same age group grew moderately over the period (8 percentage points).
- Between 1993 and 1995, enrollment rates in 2-year institutions were similar for white and black high school graduates aged 18–24, while Hispanics were more likely than whites or blacks to be enrolled in 2-year institutions. However, both black and Hispanic high school graduates aged 18–24 were substantially less likely to be enrolled in 4-year institutions than were their white counterparts.
- Enrollment rates for older adults, high school graduates aged 25 or older, were much lower than those for their younger counterparts aged 18–24 regardless of racial and ethnic group. Between 1993 and 1995, college enrollment rates were similar for white, black, and Hispanic high school graduates aged 25–34.

Percentage of high school graduates enrolled in college, by age and race/ethnicity: Selected Octobers 1972–95

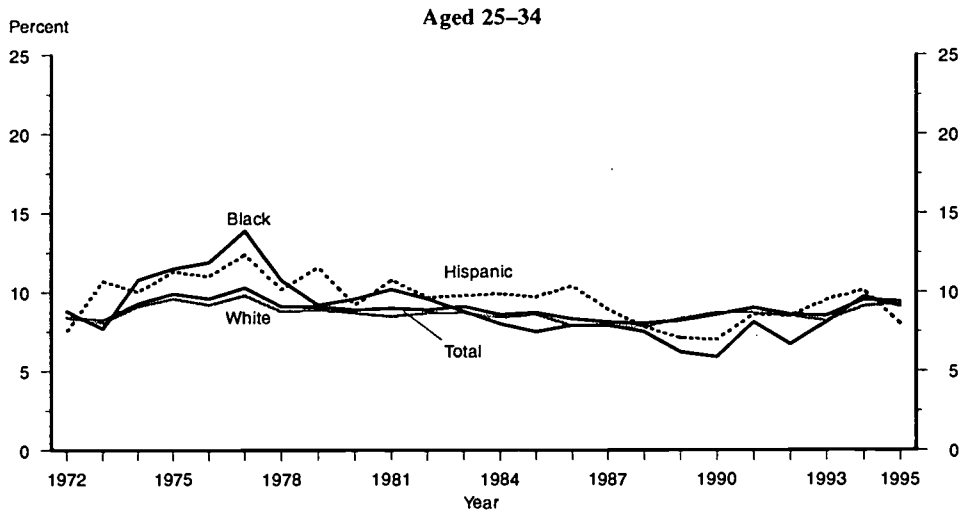
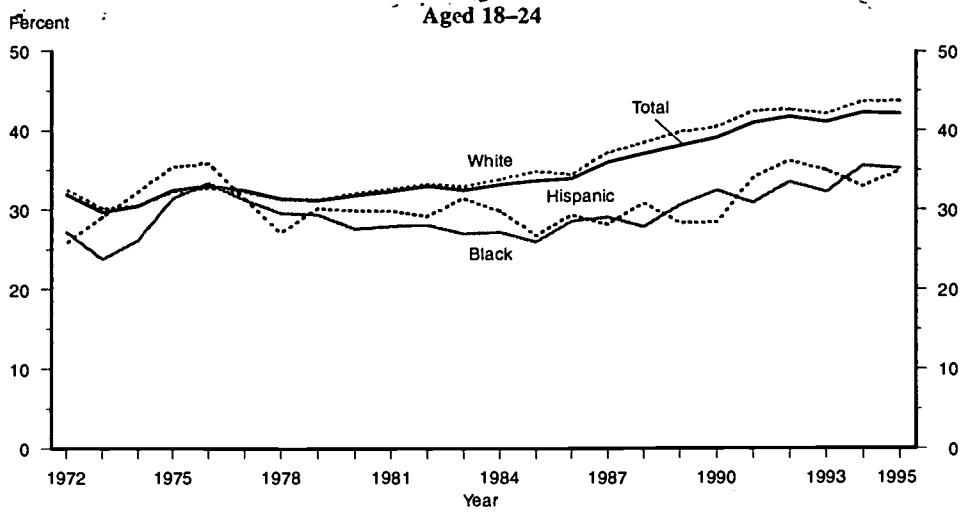
| October | Aged 18–24 | | | | Aged 25–34 | | | | Aged 35 or older | | | |
|---------|------------|-------|-------|----------|------------|-------|-------|----------|------------------|-------|-------|----------|
| | Total | White | Black | Hispanic | Total | White | Black | Hispanic | Total | White | Black | Hispanic |
| 1972 | 31.9 | 32.6 | 27.2 | 25.8 | 8.4 | 8.4 | 8.8 | 7.5 | — | — | — | — |
| 1974 | 30.5 | 30.6 | 26.2 | 32.3 | 9.3 | 9.1 | 10.8 | 10.0 | — | — | — | — |
| 1976 | 33.1 | 32.8 | 33.4 | 35.9 | 9.6 | 9.2 | 11.9 | 11.0 | 2.3 | 2.1 | 4.1 | 3.9 |
| 1978 | 31.4 | 31.3 | 29.6 | 27.1 | 9.1 | 8.8 | 10.8 | 10.2 | 2.4 | 2.2 | 3.8 | 4.2 |
| 1980 | 31.8 | 32.1 | 27.6 | 29.9 | 8.9 | 8.7 | 9.6 | 9.2 | 2.1 | 2.0 | 3.4 | 2.9 |
| 1982 | 33.0 | 33.3 | 28.1 | 29.2 | 8.9 | 8.7 | 9.6 | 9.7 | 2.2 | 2.1 | 2.7 | 2.9 |
| 1984 | 33.2 | 33.9 | 27.2 | 29.9 | 8.6 | 8.4 | 8.0 | 9.9 | 2.1 | 2.0 | 2.7 | 1.8 |
| 1986 | 34.0 | 34.5 | 28.6 | 29.4 | 8.3 | 7.9 | 7.9 | 10.4 | 2.4 | 2.2 | 3.3 | 3.4 |
| 1988 | 37.0 | 38.4 | 27.8 | 30.8 | 8.0 | 7.8 | 7.5 | 7.8 | 2.7 | 2.6 | 3.3 | 3.4 |
| 1990 | 39.0 | 40.3 | 32.4 | 28.4 | 8.6 | 8.7 | 5.9 | 7.0 | 2.7 | 2.6 | 2.9 | 3.9 |
| 1991 | 40.8 | 42.3 | 30.8 | 33.9 | 9.0 | 8.7 | 8.1 | 8.6 | 2.7 | 2.6 | 3.4 | 2.9 |
| 1992 | 41.6 | 42.5 | 33.4 | 36.1 | 8.6 | 8.5 | 6.7 | 8.5 | 2.5 | 2.5 | 2.6 | 2.7 |
| 1993 | 41.0 | 42.0 | 32.2 | 34.9 | 8.5 | 8.2 | 8.1 | 9.5 | 2.6 | 2.4 | 3.3 | 3.1 |
| 1994 | 42.2 | 43.6 | 35.5 | 32.9 | 9.5 | 9.1 | 9.7 | 10.1 | 2.7 | 2.5 | 3.5 | 4.3 |
| 1995 | 42.1 | 43.7 | 35.2 | 34.9 | 9.4 | 9.3 | 9.1 | 8.0 | 2.6 | 2.4 | 3.5 | 3.8 |

— Not available.

NOTE: Included in the total but not shown separately are high school graduates from other racial/ethnic groups.

SOURCE: U.S. Department of Commerce, Bureau of the Census, October Current Population Surveys.

Percentage of high school graduates enrolled in college, by age and race/ethnicity:
October 1972-95



NOTE: Included in the total but not shown separately are high school graduates from other racial/ethnic groups.

SOURCE: U.S. Department of Commerce, Bureau of the Census, October Current Population Surveys.

This indicator is one of 60 from *The Condition of Education 1997*. It is in the public domain and may be reproduced without permission.

Suggested citation: U.S. Department of Education, National Center for Education Statistics, *The Condition of Education 1997*, NCES 97-388, by Thomas M. Smith, Beth Aronstamm Young, Yupin Bae, Susan P. Choy, and Nabeel Alsalam. Washington, D.C.: U.S. Government Printing Office. To obtain a copy of the full volume of *The Condition of Education*, contact the National Education Data Resource Center on (703) 845-3151 (E-mail: nedrc@inet.ed.gov). This title is also available on the Internet at <http://www.ed.gov/NCES/pubs/ce>.

United States
Department of Education
Washington, DC 20208-5650

Official Business
Penalty for Private Use, \$300



Postage and Fees Paid
U.S. Department of
Education
Permit No. G-17

FIRST CLASS



U.S. DEPARTMENT OF EDUCATION
Office of Educational Research and Improvement (OERI)
Educational Resources Information Center (ERIC)



NOTICE

REPRODUCTION BASIS

This document is covered by a signed "Reproduction Release (Blanket)" form (on file within the ERIC system), encompassing all or classes of documents from its source organization and, therefore, does not require a "Specific Document" Release form.

This document is Federally-funded, or carries its own permission to reproduce, or is otherwise in the public domain and, therefore, may be reproduced by ERIC without a signed Reproduction Release form (either "Specific Document" or "Blanket").