

DOCUMENT RESUME

ED 335 258

SO 021 316

AUTHOR Van Noate, Judith, Comp.
 TITLE Resources for Topics in Architecture.
 INSTITUTION North Carolina Univ., Charlotte. J. Murrey Atkins Library.
 PUB DATE 90
 NOTE 22p.; For a related document, see SO 021 315.
 PUB TYPE Guides - Non-Classroom Use (055) -- Reference Materials - Bibliographies (131)

EDRS PRICE MF01/PC01 Plus Postage.
 DESCRIPTORS Annotated Bibliographies; *Architecture; Educational Resources; Higher Education; Information Retrieval; Information Sources; Library Materials; *Reference Materials; Research Tools; *Search Strategies
 IDENTIFIERS University of North Carolina Charlotte

ABSTRACT

This guide for conducting library research on topics in architecture or on the work of a particular architect presents suggestions for utilizing four categories of resources: books, dictionaries and encyclopedias, indexes, and a periodicals and series list (PASL). Two topics are researched as examples: the contemporary architect Richard Meier, and the topic of domestic architecture. Although this guide discusses the resources available at the J. Murrey Atkins Library of the University of North Carolina (Charlotte), it also can be useful to people conducting library research on architecture topics in general. (DB)

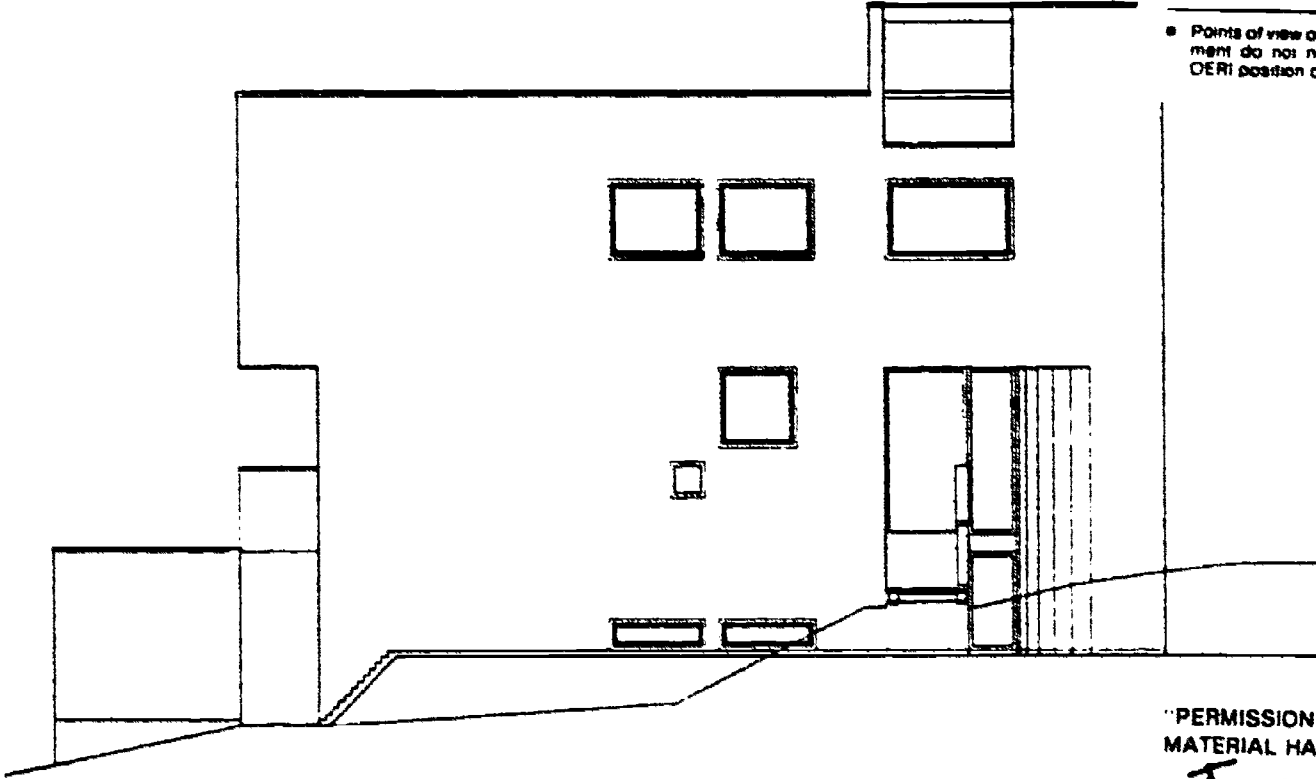
 * Reproductions supplied by EDRS are the best that can be made *
 * from the original document. *

ED 385 258

This document has been reproduced as received from the person or organization originating it.

Minor changes have been made to improve reproduction quality.

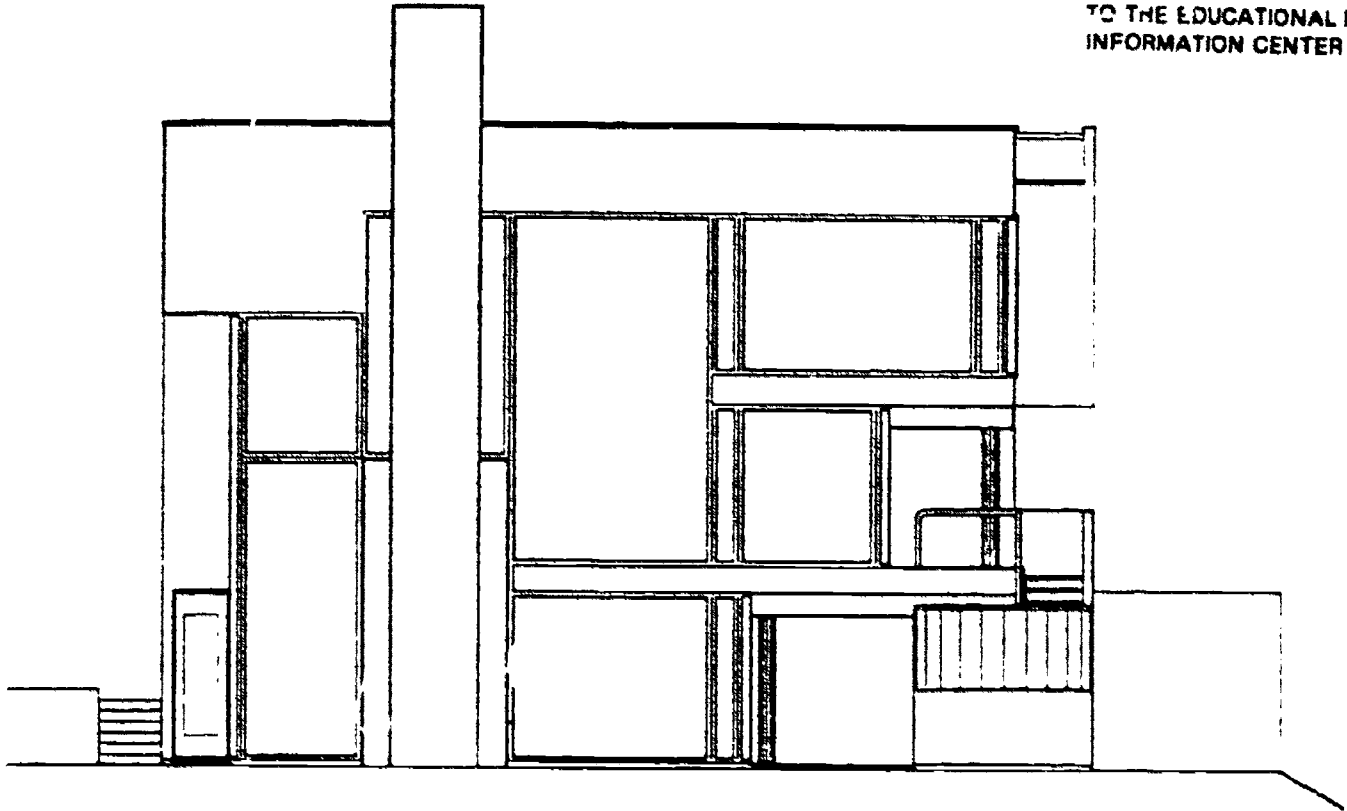
Points of view or opinions stated in this document do not necessarily represent official OERI position or policy.



"PERMISSION TO REPRODUCE THIS MATERIAL HAS BEEN GRANTED BY

JUDITH
VAN NOATE

TO THE EDUCATIONAL RESOURCES INFORMATION CENTER (ERIC)."



RESOURCES FOR TOPICS IN ARCHITECTURE

BEST COPY AVAILABLE

SO 021 316

RESOURCES FOR TOPICS IN ARCHITECTURE

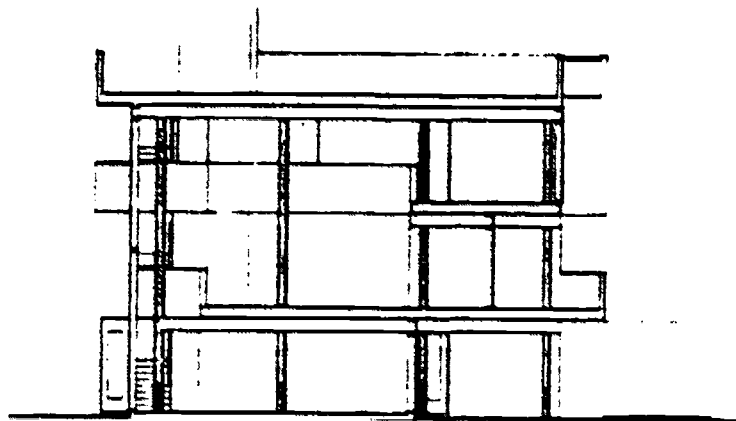
by Judith Van Noate
Reference Librarian
Reference Unit, Atkins Library, UNCC
547-2333

Introduction:

Resources for a topic on architecture or for researching the work of an architect fall into these basic categories:

1. Books
2. Dictionaries and encyclopedias (for background information)
 - a. General architecture encyclopedias, dictionaries and references
 - b. Biographical dictionaries
3. Indexes
 - a. Architecture indexes
 - b. Indexes to journals in related areas
4. P.A.S.L.

Using the guidelines in this handout should enable you to research the work of an individual architect or architectural style. The examples used are the contemporary architect Richard Meier, and the topic of domestic architecture. Illustrations are from: Richard Meier, Architect, by Richard Meier, Rizzoli, New York, 1984.



BOOKS

Finding books on architecture in Atkins Library involves using either ALADDIN (the online catalog) or the card catalog. The card catalog contains records for materials acquired before 1976. Records for all materials added to the library since 1976 are in ALADDIN. Because the majority of Atkins' holdings (about 73%) are only in the online catalog, this guide will concentrate on introducing you to ALADDIN. However, to see complete holdings on a subject you will need to use both the online and the card catalogs.

Library of Congress Subject Headings

Both catalogs can be searched by author, title, or subject. Subject searches require the use of specific "subject headings" which have been determined by the Library of Congress. These subject headings are listed in Library of Congress Subject Headings (the large red books located near the terminals). These volumes will tell you which terms you can use for your topic, which you cannot use, and also give related terms which may help to expand, narrow or clarify a topic.

Symbols used in Library of Congress Subject Headings:

- BOLD PRINT authorized term
- UF used for, the terms under UF are not used,
USE gives the preferred term
- BT broader term
- RT related term
- NT narrower term
- subheading to be added to the main term
- 2nd subheading which may be added to the 1st subheading

Although proper names for people and places, etc., are not included in Library of Congress Subject Headings, they can be used as subjects in ALADDIN or in the card catalog. Therefore, if you are looking for books about an architect or one of his works, go directly to ALADDIN. Example: a book about Richard Meier would be found in ALADDIN by using s/meier,r.

s/meier,r

J. MURREY ATKINS LIBRARY- - - - - V T L S - - - - - QUALIFYING SUBJECTS
1. 4 Meier, Richard, 1934-

There are almost eight pages of subject headings on architecture topics. "Architecture" is used with a qualifying word or phrase such as "Architecture—designs and plans." The terms "architects" and "architectural" as in "architectural design" are also used. Here are some of the entries under these subject headings:

Architecture (May Subd Geog)
(NA)

Here are entered works on the design and style of structures. Works on the process of construction are entered under Build'ng. General works on structures or edifices are entered under Buildings.

This heading is subdivided by place for works on architecture indigenous to the place named, e.g. Architecture—United States. The heading is qualified by a national qualifier for works on architecture of the type named in the qualifier but located in other places, e.g. Architecture, American—India.

- UF Building design
- Construction
- BT Art
- RT Building
- Buildings
- SA *headings beginning with the word*
- Architectural
- NT Amphitheaters
- Arches
- Architecture, Domestic
- Architecture, Industrial
- Architecture, Tropical
- Archive buildings
- Art nouveau (Architecture)
- Astrology and architecture
- Bank buildings

Architecture, Domestic (May Subd Geog)
(NA7100-NA7882)

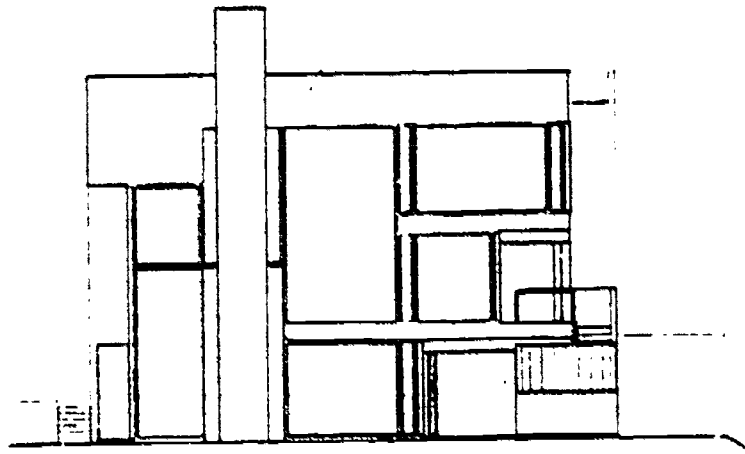
- UF Architecture, Rural
- Domestic architecture
- Home design
- Houses
- One-family houses
- Residences
- Rural architecture
- Villas
- BT Architecture
- RT Dwellings
- SA *subdivision Dwellings under classes of persons and ethnic groups; and subdivision Homes and haunts under classes of persons and under names of individual persons*
- NT Adobe houses
- Apartment houses
- Architect-designed houses
- Bathrooms
- Bedrooms
- Brick houses

Architectural design

- UF Design, Architectural
- BT Design
- RT Structural design
- NT Architectural drawing
- Architecture—Composition, proportion, etc.
- Architecture—Details
- Communication in architectural design
- Crime prevention and architectural design
- Decoration and ornament, Architectural
- Data processing
- UF Architecture, Computers in
- Architectural designs
- USE Architecture—Designs and plans
- Architectural detailing
- USE Architectural drawing—Detailing
- Architectural details
- USE Architecture—Details

"Architecture, domestic" may either be used alone (for general works) or modified with a subheading for a more specific search.

Example: Architecture, domestic -- designs and plans



ALADDIN COMMANDS

These are some of the basic commands for the ALADDIN system.

t/ title search
a/ author search
s/ subject search
c/ call number search
w/ key word search--enter w/ followed by one word
b/ boolean search
b/ boolean search
combines set numbers retrieved in keyword searches; the operators AND, OR, and NOT may be used. Following the directions in the "Novice User Search System" is the easiest way to learn boolean searching.

ns Goes to the next screen.
ps Goes to the previous screen.
ca Goes to a screen which gives call number, bibliographic information, and subject headings under which that title is listed. The screen looks somewhat like a card from the card catalog.

/redo Goes back to the last search, skipping any intervening screens which were viewed.
/help Provides general instructions for the basic commands.
help (without the /). Retrieves a detailed explanation of the screen currently on display.
? Brings up the "Novice User System" which gives detailed information on using the various search capacities of the ALADDIN system. Follow the instructions given on the screen.

STRIKE THE RETURN KEY AFTER EACH COMMAND

Note: At present, ALADDIN contains records for all books processed by the library since 1977. ONLY RECORDS NOT YET ENTERED INTO THE ALADDIN SYSTEM CAN BE FOUND THROUGH THE CARD CATALOG. THUS, ONLY A SMALL PERCENTAGE OF THE LIBRARY'S HOLDINGS CAN BE FOUND BY USING THE CARD CATALOG.

Atkins Library does not have books on all of the Library of Congress subjects. If we do not have a book ALADDIN will give you a message that reads "NO QUALIFYING ENTRIES FOUND--PLEASE ENTER NEW COMMAND." If this happens use a broader term.

The same subject headings are used in the card catalog as in ALADDIN.

USING ALADDIN

To find books about "architecture, domestic -- designs and plans" you type:

```
s/architecture domestic designs and plans
```

and push the "return" button. This will bring up a screen of subject headings on this topic. Note: ALADDIN does not distinguish between upper and lower case letters, you can use either. You can also omit punctuation within subject headings.

```
s/architecture domestic designs and plans
```

```
J. MURREY ATKINS LIBRARY- - - - - V T L S - - - - - QUALIFYING SUBJECTS
 1. 54 Architecture, Domestic -- Designs and plans.
 2. 1 Architecture, Domestic -- Designs and plans -- Catalogs.
 3. 1 Architecture, Domestic -- Designs and plans -- Collected
    works.
 4. 1 Architecture, Domestic -- Designs and plans -- Computer
    programs.
```

Please enter NEW COMMAND or LINE # of selection

You are now asked to enter the LINE # for the subject of your choice. If you choose number 1, you will be able to see the titles of the first three of fifty-four books on domestic architecture. To see additional titles enter "ns" (without " marks.). Entering 1 and then "ns" you get:

```
ns
 1. Title ----- AMERIKA NO JUTAKU HOUSES IN U S A / EDITED
    PRESENTED BY YUKIO FUTAGAWA
    Pub. data --- TOKYO A D A ÉDITA TOKYO CO 1971-1974 V 1 1975
    PRINTING

 2. Title ----- ARCHITECTURAL RECORD BOOK OF VACATION HOUSES
    SELECTED BY THE EDITORS OF ARCHITECTURAL RECORD
    Pub. data --- NEW YORK AMERICAN HERITAGE PRESS 1970

 3. Title ----- ARCHITECTURAL RECORD BOOK OF VACATION HOUSES /
    SELECTED BY THE EDITORS OF ARCHITECTURAL RECORD
    2D ED
    Pub. data --- NEW YORK MCGRAW HILL C1977

 4. Title ----- ARCHITECTURE RESIDENTIAL DRAWING AND DESIGN / BY
    CLOIS E KICKLIGHTER RONALD J BAIRD CONSULTING EDITOR
    Main author - KICKLIGHTER CLOIS E
    Pub. data --- SOUTH HOLLAND ILL GOODHEART WILLCOX CO C1976
```

Enter 'NS' for more

Next, to see the location, call number and status (whether available for checkout) of the book of your choice, you again need to enter a LINE #. Entering number 4 you get:

4

J. MURREY ATKINS LIBRARY- - - - - V T L S - - - - - ITEM SCREEN

Call Number - NA7115 K46 1976
Author ----- Kicklighter, Clois E.
Title ----- Architecture : residential drawing and design / by ...
Item Number - 1000246939
Copy Number - 1 HISTORICAL DATA
Location ---- GENERAL COLLECTION Entry date into system: 17Apr84
Loan Period - 999 Circulation count to date: 17
Status: AVAILABLE
Please enter NEW COMMAND or 'HELP' for assistance

To find out more about this book you can enter "ca." This will bring up the BIBLIOGRAPHIC SCREEN, which shows the same information you would find on a catalog card. This may help you determine additional subject headings. Here is the BIBLIOGRAPHIC SCREEN for the book Architectural Residential Drawing and Design.

ca

J. MURREY ATKINS LIBRARY- - - - - V T L S - - - - - BIBLIOGRAPHIC SCREEN

- . NA7115 K46 1976
- . Kicklighter, Clois E.
- . Architecture : residential drawing and design / by Clois E. Kicklighter ; Ronald J. Baird, consulting editor.
- . South Holland, Ill. : Goodheart-Willcox Co., c1976.
- . 492 p. : ill. (some col.) ; 29 cm.
- . Includes index.
- . ARCHITECTURE, DOMESTIC -- DESIGNS AND PLANS.

"Novice User Search System"

This system will give you step-by step instructions for a number of different search options. To bring up this system, hold down the "shift" key and push the ? key. Enter the command with the "return" key. Follow the directions on the screen.

BEST COPY AVAILABLE

CALL NUMBERS or HOW TO FIND A BOOK ON THE SHELF

Books in Atkins Library are shelved by the Library of Congress classification system. Each book has its own unique number.

Kicklighter's book, Architectural Residential Drawing and Design has the call number:

NA
7115
K46
1976

The numbers are "alphanumeric" (letters and numbers combined) and placed in order alphabetically first and by number second. Thus N comes before NA, and NA7115 comes before NA9267. The third line K46 is read as a decimal; thus K46 would come before K5.

Using the first letter(s) of the call number (NA) and the location guide on this page, you can see that this book would be kept on the 7th floor.

LOCATION GUIDE

Letters refer to the beginning letters of the call number.

		10th FLOOR	Rare Books, Manuscripts, University Archives
		9th FLOOR	General Collection Q - Z
		8th FLOOR	General Collection PN - PZ
		7th FLOOR	General Collection K - PM
		6th FLOOR	General Collection H - J
		5th FLOOR	General Collection BC - GV
		4th FLOOR	A - B General Collection OD - Z Bound Periodicals
		3rd FLOOR	Bound Periodicals J - OC
2nd FLOOR	Government Docs. Desk Current Periodicals Microforms Area Reserve Reading - Annex CMC - NASA TRC	2nd FLOOR	Bound Periodicals A - H
1st FLOOR	Circulation Desk Reference Desk Cataloging	1st FLOOR	Acquisitions
	Ground Floor	Elevators	Ground Floor

Books dealing with architecture topics are classified NA. N is the classification for general works on fine arts. Decorative arts--including interior design are classified NK.

DICTIONARIES AND ENCYCLOPEDIAS

There are a number of specialized dictionaries and encyclopedias in the Atkins reference collection. These are useful for finding background information. They are an excellent place to start, especially if you need help with narrowing or defining your topic, or if you are not sure where to start. Entries in dictionaries usually give short overview type information. Articles in encyclopedias are longer for more in depth coverage. They usually contain references which may lead you to further information.

Several encyclopedias and dictionaries are useful for architecture topics. The first group cover a broad range of topics, but may also have entries on major architects. The second group is biographical in content.

General Architectural Encyclopedias, Dictionaries, and Other References

- | | |
|--------------------------------|--|
| Ref
NA
31
P48
1976 | <u>A Dictionary of Architecture</u>

For brief biographical and overview information on architecture topics. Illustrated. Published in 1976. |
| Ref
NA
31
SB4
1966 | <u>Dictionary of Architectural Building</u>

A comprehensive dictionary of architecture and building terms. Medium length articles. Illustrated with drawings and photographs. Three volumes. |
| Ref
NA
705
HB6 | <u>Encyclopedia of American Architects</u>

A general encyclopedia of American architecture treating styles, building types, technical details, and the lives and works of major American architects in some depth. Illustrated. |
| Ref
NA
31
E59
1988 | <u>Encyclopedia of Architecture Design,
Engineering and Construction</u>

This three volume encyclopedia "includes all aspects of architecture and engineering from the standpoints of design, education, regulations. . . as well as the construction industry as a whole. . ." There are also entries on individual architects. "Articles include references and bibliography for further reading." Published in 1988. |

- Ref Encyclopedia of 20th Century Architecture
 NA
 680 "the scope of this encyclopedia is. . .
 H3913 the architecture and urban planning of the
 1985 20th century. . .presented in three general
 categories: biographies of individual archi-
 tects; surveys of architectural developments
 in individual countries; overviews of
 movements, groups and stylistic trends."
 Index of names. Illustrated with
 photographs. Published in 1986.
- Ref Encyclopedia of World Art
 N
 31 This is the major art encyclopedia. It is an
 E4833 excellent source for architecture topics.
 Articles are long, giving in depth
 discussions of styles and movements as well
 as historical, political, sociological and
 religious overviews of major cultural groups
 in relation to their artistic contributions.
 Maps, line drawings and color plates. Use
 the index (volume 15) for full coverage of a
 topic.
- Ref Highlights of Recent American Architecture:
 NA A Guide to Contemporary Architects and Their
 712 Leading Works Completed 1945-1978
 W74
 1982 "a guide to basic information about 379 of
 the most widely reviewed American buildings
 and complexes completed from 1945 through
 1978." The entries are annotated with full
 citations to journal articles dealing with
 the various buildings.
- Arranged alphabetically by last name of
 architect. Indexed by building type,
 geographical location, design, engineering
 and construction firm. Three of Meier's
 buildings are included.
- Ref Sir Banister Fletcher's
 NA A History of Architecture
 200
 F63 The most widely respected history of
 1975b architecture. Discusses architectural
 developments from ancient times through the
 1960's, but will be less useful for 20th
 century architecture than some other sources.
 Comprehensive and authoritative. Indexed.
 Illustrated.

Biographical Dictionaries

- Ref Biographical Dictionary of American
NA Architects (Deceased)
736
WS Lives and achievements of nearly two
1970 thousand men and women working during
period 1740-1950. Entries are brief, one
paragraph to one page. References. Useful
for in depth research.
- Ref A Biographical Dictionary of British
NA Architects, 1600-1840
996
C6 Entries of varying length depending on the
1980 subject's importance. Indexes of persons
and places. Bibliographies of sources.
Published in 1978.
- Ref Contemporary Architects
NA
680 An excellent source for information about
C625 hundreds of contemporary architects. Includes
Meier. Provides a listing of the architect's
works, biographical information, statements
by and about the architect, and a photograph
of a representative work. Bibliography of
publications by and about the architect.
Published in 1980.
- Ref Macmillan Encyclopedia of Architects.
NA
40 A monumental biographical dictionary.
M25 Articles are written by scholars and are
1982 comprehensive in their approach to the
subject. They include a chronological
listing of works, and bibliographies. There
is no entry on Meier, but this should be a
good place to start for most architects.
Glossary of terms. "Name" and "Works"
indexes.

INDEXES

Indexes are used to locate articles in journals and periodicals. They are a source for finding the most current, and in some cases, the only available information on a given topic.

Some indexes are very broad in scope, such as Reader's Guide to Periodical Literature. Others are limited to special fields. There are separate indexes to newspapers.

Indexes are usually arranged by subject or personal name and sometimes by author. Subject headings may differ from your original or Library of Congress term. If you have trouble locating the "correct" subject heading for an architectural topic, you may wish to consult:

Ref	<u>Architectural Keywords</u>
NA	
Q1	A thesaurus of subject headings for use with
A77	<u>Architectural Periodicals Index</u> . Covers
1982	terminology used in the fields of architecture and the allied arts, including building types, constructional technology, professional matters, design and environmental studies, landscape, planning, as well as the history and current aspects of these fields. Includes synonyms (words with the same meaning) and cross references. Although published for use with this one index, this thesaurus can help you find a variety of terms to use to find your topic in many sources.

Example:

Domestic ...	Houses ...
use	use for
Bars, buffets: domestic	Homes
Children's nurseries: domestic	Houses
Drainage: domestic	see also
Electrical installation: domestic	Cottages
Electricity: domestic	Flats
Flats	Housing
Gas equipment: domestic	use for
Halls: domestic	Detached houses
Hostels	Domestic ...
Hotels	Farmhouses
Houses	Houses, detached
Housing	Houses: single storey
Laundries: domestic	Neighbourhood planning,
Lighting: artificial: fluorescent:	r.ighbourhood units
domestic	Single storey houses
Motor vehicles: garages: domestic	

Entries under subject headings in indexes are called bibliographic citations. The citation includes:

author(s) of article
title of article
journal title (usually abbreviated--
a list of abbreviations is located
in the front of most index volumes)
volume number, and if available, issue
number of the journal
page(s) on which the article appears
date of the issue in which the article
appeared

SUBJECT
|
MEIER, Richard

title of article
|
Smith house, Darien, Conn. plans
|
journal title abbreviated
|
Abbreviations
|
il(pt col) por
|
date
|
143:52-7
|
volume number
|
page(s)
|
Mid-My '68

The citation may also include abbreviations which indicate that the article has a bibliography (a list of sources or references) or that it is illustrated, etc. An explanation of these as well as full titles of the periodicals indexed usually appears in the front of the index.

Architecture Indexes

INDEX The Architectural Index
Z
S941 An index to these architectural journals:
A66

PERIODICALS INDEXED

- AIAJ — AMERICAN INSTITUTE OF ARCHITECTS JOURNAL: Donald Canty, editor; The American Institute of Architects, publisher; monthly
January 1981 to December 1981, inclusive
- AR — ARCHITECTURAL RECORD: Walter F. Wagner, Jr., editor; McGraw-Hill, Inc., publisher; monthly
January 1981 to December 1981, inclusive.
- H — HOUSING: Natalie Gerardi, editor; McGraw-Hill, Inc., publisher; monthly
January 1981 to December 1981, inclusive.
- ID — INTERIOR DESIGN: Sherman R. Emery, editor; Whitney Communications Corp., publisher; monthly
January 1981 to December 1981, inclusive.
- INT — INTERIORS: Beverly Russell, editor; Billboard Publications, Inc., publisher; monthly
January 1981 to December 1981, inclusive.
- JAE — JOURNAL OF ARCHITECTURAL EDUCATION: editor varies; The Association of Collegiate Schools of Architecture, Inc., publisher; four issues per year.
Winter 1980, Spring 1981.
- LA — LANDSCAPE ARCHITECTURE: Grady Clay, editor; American Society of Landscape Architects, publisher; bimonthly
January 1981 to November 1981 inclusive.
- PA — PROGRESSIVE ARCHITECTURE: John Morris Dixon, editor; Reinhold Publishing Corporation, publisher; monthly
January 1981 to December 1981, inclusive.
- SA — SOLAR A/JE: Bruce Anderson, editor; Solar Vision, Inc., publisher; monthly
January 1981 to December 1981, inclusive.

Entries on individual architects are arranged by last name in the section, "Architect or Designer." Each bound volume contains four years of indexes. Limited by the fact that only a few journals are indexed, however, these are important journals in the field.

Example:

THE ARCHITECTURAL INDEX

ARCHITECT OR DESIGNER (Cont'd)

MEIER, RICHARD

Art Museum; Atlanta, Georgia; sec.iii.iso.;
p.31; Aug 81; AR
Decorative Arts Museum; Frankfurt, Ger-
many; m.iii.pl.iso.elev.sec.det.; p.87-95; Apr
81; AR
Research Center, Hartford Seminary Founda-
tion; Hartford, Connecticut; m.pl.sec.elev.
iso.; p.96-97; Apr 81; AR

BEST COPY AVAILABLE

INDEX
Z
5941
A68

The Architectural Periodicals Index

The Architectural Periodicals Index

selectively indexes over 450 architectural journals from all over the world. Issued by the British Architectural Library, the API covers such fields as architecture and allied arts, landscape, design and environmental studies, urban and regional planning, and construction technology. The indexing emphasizes practical and work-related information. The API in its present format began in 1972. It is issued quarterly, the fourth issue being a cumulation of the previous year.

The "Main Index" lists articles alphabetically by subject. Each entry is assigned a code number. For articles about an architect see the "Names Index." For specific places or buildings see "Topographical and Building Names Index" (in the fourth cumulative issue of each year). The "Names" and "Building Names" indexes will refer you by code number to the full citation in the "Main Index." For other topics use the subject entries in the "Main Index." A list of subject headings is appended in the back of the volume or use Architectural Keywords (Ref NA31 A77 1982).

Example:

Meier Richard A0951 A0952 A1925
A1937 A1940 A2226 C0078 G0083
M1740 M0423 M0427 M0428 M0429
M0430 M0431 M0432 M0433 M0436
M0457 M0493 M0500 S0080 S0400

- A0956 Architects: US; Richard Meier & Partners
Special issue. Richard Meier & Partners: Museum
für Kunsthandwerk and the Des Moines Art Center
addition.
Article in English. Japanese by Kenneth Frampton;
plans, axonometric views, photos, ports.
A&U no 9 (160), 1985 Sep, pp15-70
- A0967 The white album: two houses by Richard Meier &
Partners (house in North Salem, NY, and
Giovannetti residence, Pittsburgh, Pa).
Article by Charles K Gandee; plans, sectns,
axonometric views, photos.
Archit Record, vol 172, no 13 (11), 1984 Nov,
pp120-133

BEST COPY AVAILABLE

INDEX
AI
J
R493

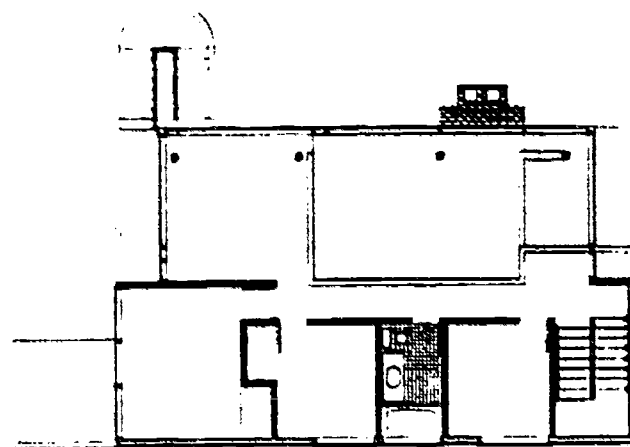
The Art Index

The Art Index is an index to over 280 periodicals in the fields of archaeology, architecture, art history, city planning, crafts, fine arts, graphic arts, interior design, photography and film. Over twenty periodicals concerning architecture are indexed.

Author and subject entries are interfiled alphabetically. A separate section of book reviews appears at the end of each issue.

The example is from the 1967-1968 volume. In this case it was helpful to know when the Smith house was constructed.

MEIER, Richard
Habitation à Darien, Connecticut. II plans
diags Arch d'Aujourd'hui 39:92-4 F '68
House opens 180 degrees. Arch Forum 127:66-
73 D '67
Smith house, Darien, Conn. II (pt col) por
plans Arch Rec 143:52-7 Mid-May '68
Un sogno americano: una casa a Darien,
Connecticut. col II Domus no461:20-3 AP
'65
Uninhibited holiday houses. II Interiors 127:
84 Ja '68



BEST COPY AVAILABLE

<p>AB P372</p> <p>Meier, Richard, archt.</p> <p>The architect's own office: showplace and workspace. (In Progressive Architecture. v.47, p.126-129, September 1966, illus., plans)</p> <p>Office in Manhattan.</p>	<p>AB D711</p> <p>Meier, Richard, archt.</p> <p>Del 1934 al 1977. (In Domus. n.517, p.12-19, Dicembre 1972, illus., plans)</p> <p>"We are tempted to make comparisons between a 1934 rationalist work, now restored, and the references to rationalism through irony in the images of contemporary works."</p> <p>1934 house "Contemporanea", Rockland Co., N.Y. designed by Paul Lester Meier; and houses by Richard Meier on Long Island and Mitchell/Ginsburg, in Minnesota.</p>
<p>AB Am3331</p> <p>Meier, Richard, archt.</p> <p>Are young architects designing prototypes of your future models? (In American Builder. v.99, p.60-71, October 1966, illus., plans)</p> <p>House, Essex Falls, N.J.</p>	<p>AB H812</p> <p>Meier, Richard, archt.</p> <p>For the new horizon: a sculptured profile. (In House Beautiful. v.109, p.140-145, September 1967, illus., plan)</p> <p>House, New Jersey, for Mr. & Mrs. Harold Renfield.</p>
<p>AB F11</p> <p>Meier, Richard, archt.</p> <p>Beach house, Fire Island, New York. (In Arts and Architecture. v.31, p.22-25, January 1964, illus., plans)</p>	<p>AB B76</p> <p>Meier, Richard, archt.</p> <p>House opens 180 degrees. (In Architectural Forum. v.127, p.66-71, December 1967, illus., plans)</p> <p>House for Mr. and Mrs. Fred Smith, Darien, Conn.</p>
<p>AB D712</p> <p>Meier, Richard, archt.</p> <p>Manca e spettacolare...grande casa per weekend, fuori New York. (In Domus. n.487, p.16-17, Giugno 1970, illus., plan)</p> <p>Richard Meier, archt.</p>	<p>AB H81</p> <p>Meier, Richard, archt.</p> <p>"A house that sets us free," say the Henry Saltmans. (In House & Garden. v.136, n.6, p.75-87, December 1969, illus., plans)</p> <p>Weekend house.</p>
<p>AB Arch</p> <p>Meier, Richard, archt.</p> <p>Controlled interior space in white stucco. (In The Architectural Record. v.144, n.6, p.113-116, December 1968, illus., plan)</p> <p>Renfield House, Chester, N.J.</p>	

Reproduction of catalog cards from
Avery Index to Architectural Periodicals
 Second Edition (Vol. 9. Leno-Moh)

BEST COPY AVAILABLE

Ref
Z
5945
C653
1973

Avery Index to Architectural Periodicals

The Avery Index to Architectural Periodicals reproduces the periodical indexing of the Avery Architectural Library at Columbia University. Over 360 periodical titles in the field of architecture and related arts are comprehensively indexed in this work. The basic set of 15 volumes covers the period from about 1934 to 1973. This set is updated by the First Supplement (1973-74), the Second Supplement (1975-76), the Third Supplement (1977-78), the Fourth Supplement (1979-82), and the Sixth Supplement (1985). Several important architectural journals have been back-indexed to their beginnings in the nineteenth century.

The Avery Index is an excellent bibliography of periodical literature, however, it is not a good source for the most current information.

Articles in this index are entered in one alphabet by author, subject, and also by architect (or firm), artist, or designer. Note that entries up through the Third Supplement are reproductions of catalog cards.

MEIER, RICHARD, 1934-

See also RICHARD MEIER & ASSOCIATES

See also RICHARD MEIER AND PARTNERS

Architekt Richard Meier: P.B.W. report.

PLANEN BAUEN WOHNEN [1985], no.111,
p.5-9, photos., port.

Casa a Pittsburgh: nuove architetture /
Pierluigi DeStefano.

House; architect: Richard Meier;
Italian and English text.

ABITARE 1985 Dec., no.240, p.30-37,
axonometric views, elevs., photos.
(col.), plans, isometric dvgs.

The Des Moines Art Center: Meier
addition.

Addition architect: Richard Meier.

IOWA ARCHITECT 1985 Sept.-Oct., v.33,
no.4, p.30-37, photos. (some col.).

Elieel Saarinen, then Pei, now Meier: So
the Des Moines Art Center has grown /
by Andrea Oppenheimer Dean.

Architects: Elieel Saarinen, I. M. Pei,
and Richard Meier.

ARCHITECTURE: THE AIA JOURNAL 1985

Oct., v.74, no.10, p.32-41, 92,
photos., axonometric view, elevs.,
plans.

BEST COPY AVAILABLE

INFOTRAC

InfoTrac is a computerized index which includes approximately four years of references to articles in newspapers (National Newspaper Index) and eight years of references to articles in magazines and journals (General Periodicals Index). Several InfoTrac terminals are located across from the reference desk.

The National Newspaper Index

Useful articles on numerous architecture topics can be found in newspapers. The easiest to use and most comprehensive index to newspapers in Atkins Library is The National Newspaper Index. It includes entries from The Christian Science Monitor, The New York Times, The Wall Street Journal, The Washington Post, and The Los Angeles Times. Topics are arranged in alphabetical order by subject or by proper name. This is the most current source for newspaper articles, but only contains indexing for the latest five years.

The citations include: the title of the article, the author, abbreviations such as "il" (illustrated), the length of the article expressed in "col in" (column inches), the volume number (v), title of the newspaper, date, section, page. Note: for the New York Times it gives the page numbers for the Late (L) and National (N) editions. Atkins Library takes the Late edition. For the Wall Street Journal it gives pages for the Eastern (E) and Western (W) editions. The library takes the Eastern edition.

The General Periodicals Index

The periodicals portion of the database contains references to articles in approximately 1100 magazines and journals. Both databases are updated monthly and are the most current of the periodical indexes. Most references will be to reviews or "newsy" events involving the architect.

Both indexes are available back to 1979 on microfiche. Ask at the reference desk for these.

Example from The National Newspaper Index:

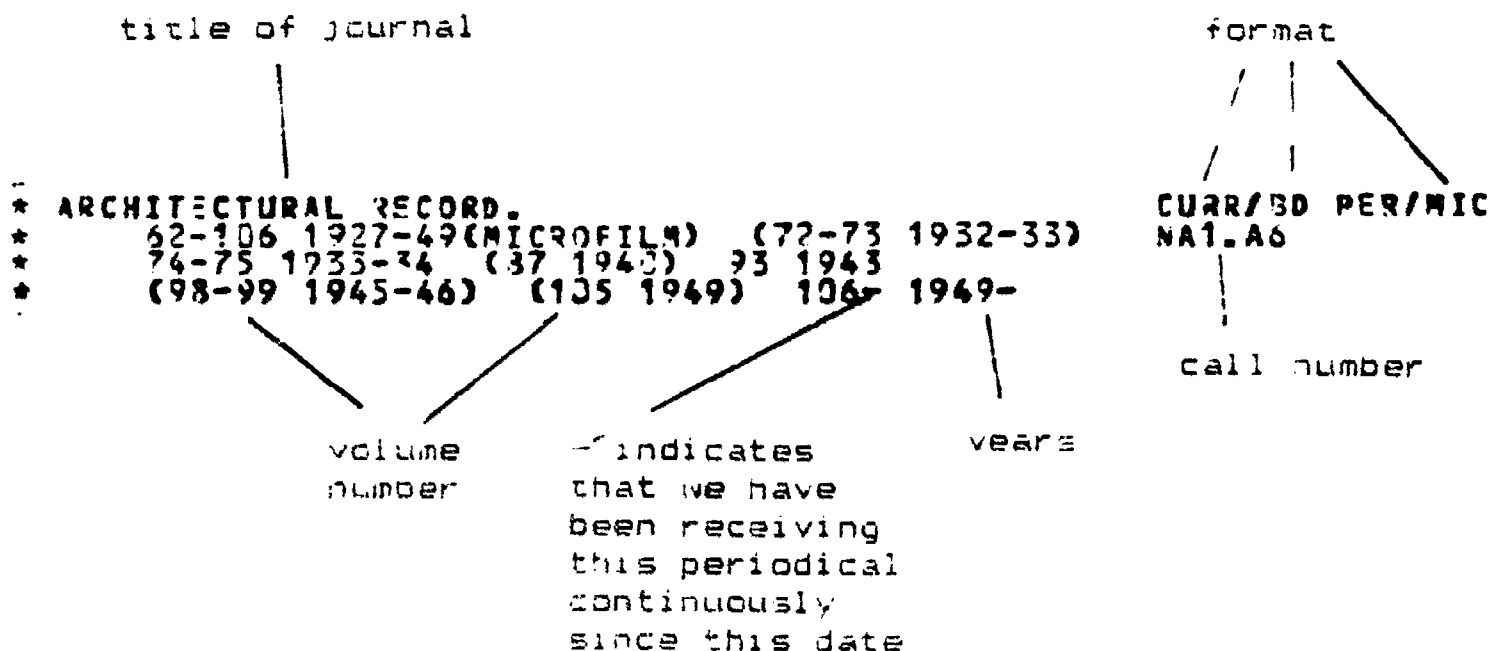
Classic modern. (Richard Meier's newest country house) (column) by Carol Vogel il 117 col in v136 New York Times Magazine Feb 1 '87 p60 col 1

Museums designed for tight quarters. by Paul Goldberger il 32 col in v133 New York Times Oct 20 '85 2 pH28(N) pH28(L) col 1

P.A.S.L. Periodicals and Serials List

P.A.S.L. is a computer printout listing of all periodicals and serials owned by Atkins Library. Look here to see if the library has the periodical you need. Periodicals are listed alphabetically by title or by issuing organization. Each entry gives information on the volumes and years of a journal owned by the library, the format in which it appears, and the call number. P.A.S.L. copies are located on the first floor near the indexes and also on the 2nd, 3rd and 4th floors where the periodicals are kept.

Example:



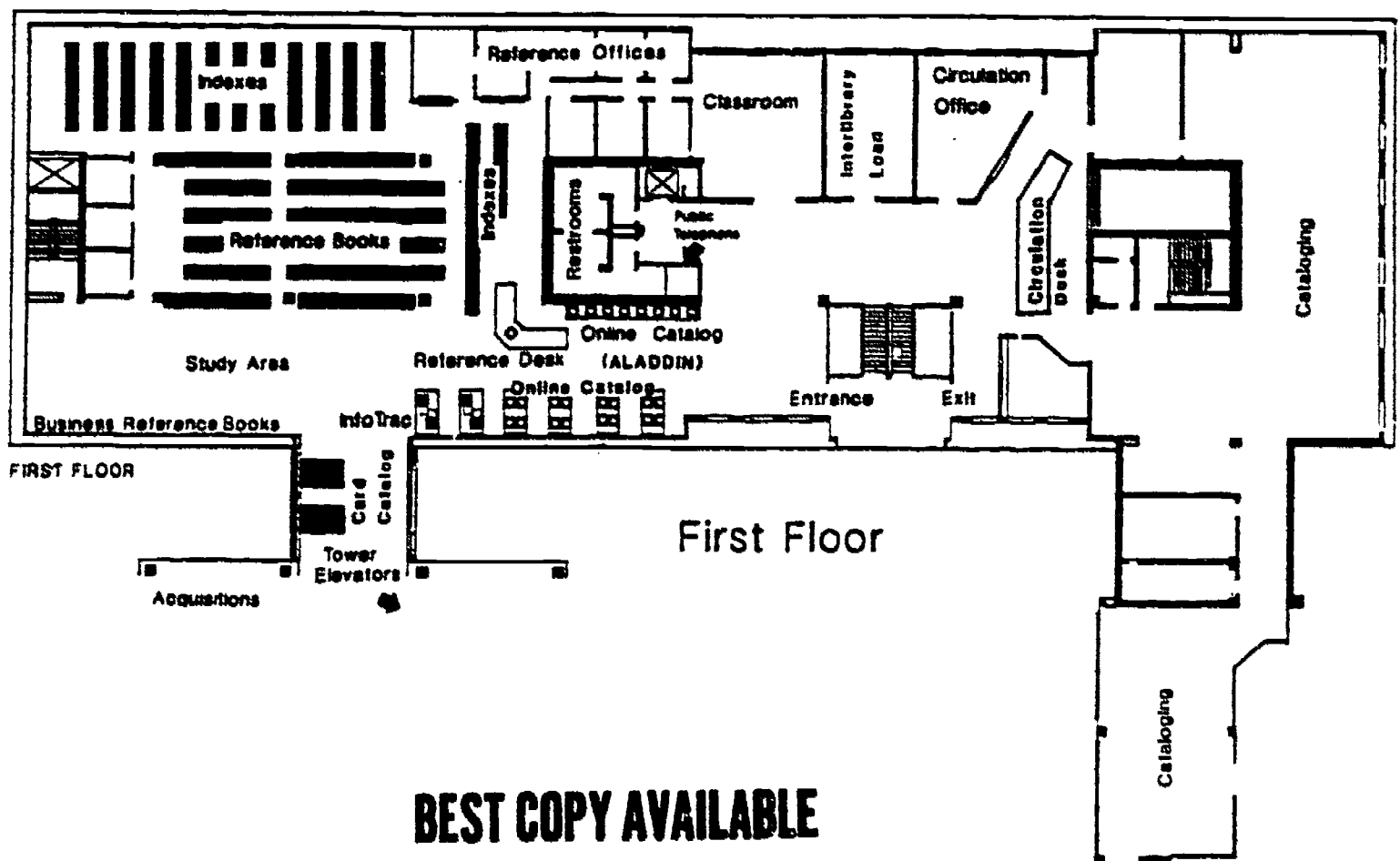
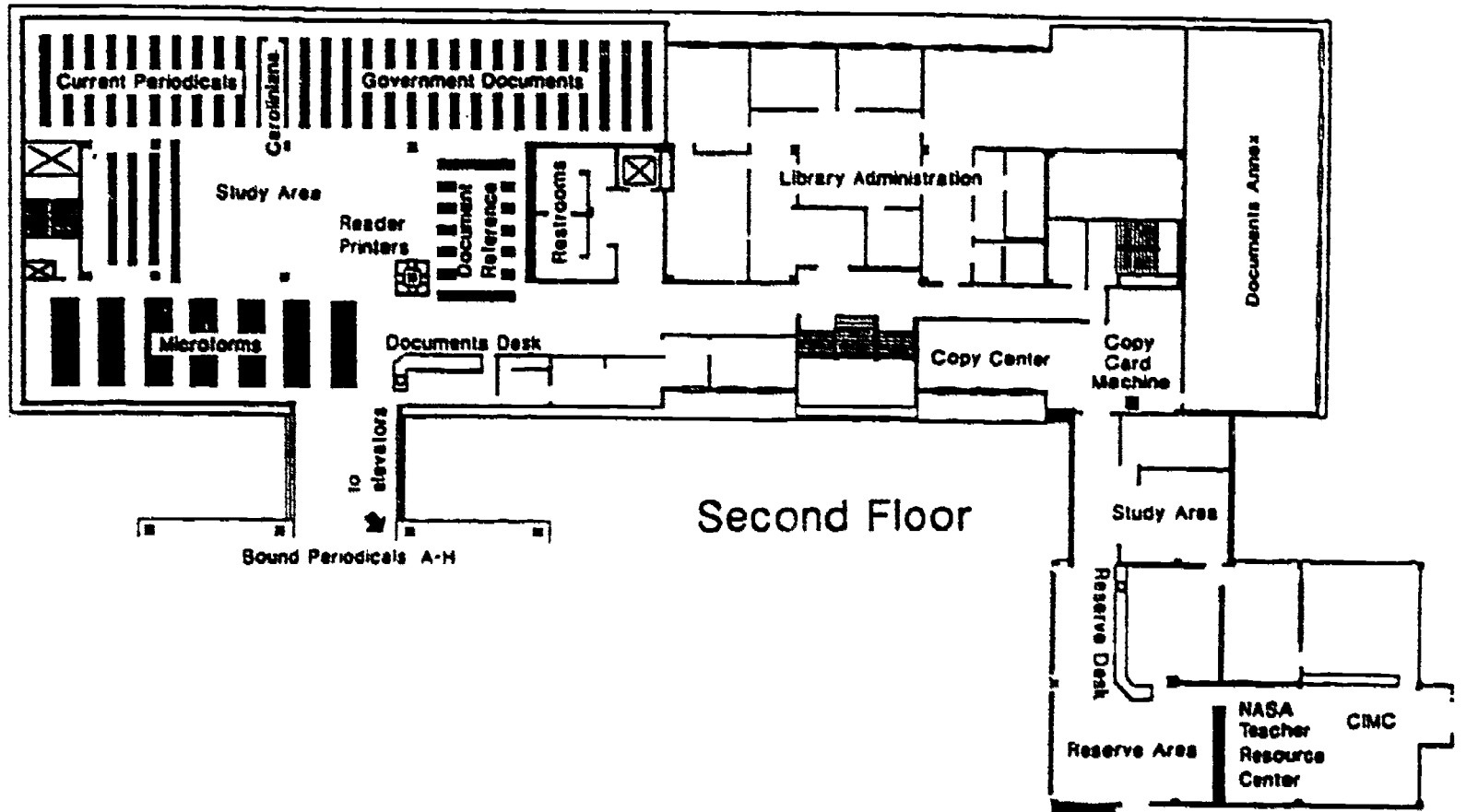
CURR: Current year issues of the periodical which are shelved by call number on the second floor CURRENT PERIODICALS area (see the library map on the inside back cover).

BD PER: Older issues which are in BOUND PERIODICAL format and are shelved in the library tower according to call number:

A-H second floor tower
 J-QC third floor tower
 QD-Z fourth floor tower

MIC: MICROFICHE or MICROFILM volumes of a periodical. These are arranged by call number in metal cabinets in the documents area of the second floor (see map).

COLLECTION LOCATIONS AND SERVICES



BEST COPY AVAILABLE