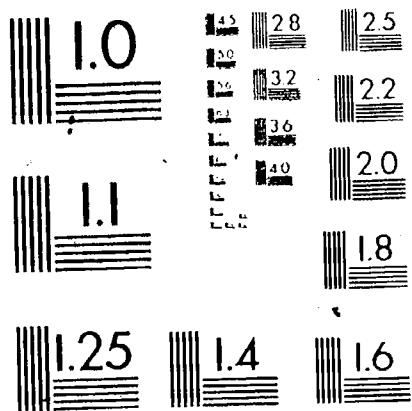


#N



MICROCOPY RESOLUTION TEST CHART
NATIONAL BUREAU OF STANDARDS
STANDARD REFERENCE MATERIAL 1010a
(ANSI and ISO TEST CHART No. 2)

DOCUMENT RESUME

ED 247 827

HE 017 475

TITLE Distribution of High School Graduates and
College-Going Rate: New York State, Fall 1983.

INSTITUTION New York State Education Dept., Albany. Information
Center on Education.

REPORT NO NYSED-83-8370

PUB DATE 83

NOTE 28p.

PUB TYPE Statistical Data (110)

EDRS PRICE MF01/PC02 Plus Postage.

DESCRIPTORS *College Attendance; *College Bound Students;
*Enrollment Trends; *Geographic Distribution; Higher
Education; *High School Graduates; In State Students;
Out of State Students; Private Schools; Public
Schools; State Surveys

IDENTIFIERS *New York

ABSTRACT

Data concerning the college attendance and the distribution of 1982-1983 high school graduates of New York State's public and nonpublic schools are presented. The data were secured through the Education Department's Basic Educational Data System and reflect the status of graduates in fall 1983. Tables cover the following: the types of institutions attended by public and nonpublic high school graduates during 1969-1983; trends for in-state and out-of-state college attendance of public/nonpublic high school graduates; the number and distribution of graduates entering employment, the military, or two-year and four-year institutions (in New York or outside New York) by New York county and region. (SW)

* Reproductions supplied by EDRS are the best that can be made *
* from the original document. *

ED0247827

Distribution of High School Graduates and College-Going Rate New York State

Fall 1983

NE017 475

"PERMISSION TO REPRODUCE THIS MATERIAL HAS BEEN GRANTED BY

N.Y.S. Education Dept.

TO THE EDUCATIONAL RESOURCES INFORMATION CENTER (ERIC)."

U.S. DEPARTMENT OF EDUCATION
NATIONAL INSTITUTE OF EDUCATION
EDUCATIONAL RESOURCES INFORMATION CENTER (ERIC)

- This document has been reproduced as received from the person or organization originating it.
- Minor changes have been made to improve reproduction quality.
- Points of view or opinions stated in this document do not necessarily represent official NIE position or policy.



The University of the State of New York/THE STATE EDUCATION DEPARTMENT
Information Center on Education/Albany, New York 12234

THE UNIVERSITY OF THE STATE OF NEW YORK

Regents of The University (with years when terms expire)

1988	Willard A. Genrich, Chancellor, LL.B., L.H.D., LL.D., Litt.D., D.C.S., D.C.L., Sc.D.	Buffalo
1987	Martin C. Barell, Vice Chancellor, B.A., I.A., LL.B., LL.D.	Muttontown
1986	Kenneth B. Clark, A.B., M.S., Ph.D., LL.D., L.H.D., D.Sc.	Hastings on Hudson
1989	Emlyn I. Griffith, A.B., J.D.	Rome
1984	Jorge L. Batista, B.A., J.D., LL.D.	Bronx
1986	Laura Bradley Chodos, B.A., M.A.	Vischer Ferry
1984	Louise P. Matteoni, B.A., M.A., Ph.D.	Bayside
1988	J. Edward Meyer, B.A., LL.B., L.H.D.	Chappaqua
1987	R. Carlos Carballada, B.S., L.H.D.	Rochester
1988	Floyd S. Linton, A.B., M.A., M.P.A., D.C.L.	Miller Place
1988	Salvatore J. Sclafani, B.S., M.D.	Staten Island
1989	Mimi Lieber, B.A., M.A.	Manhattan
1985	Shirley C. Brown, B.A., M.A., Ph.D.	Albany
1990	Robert M. Best, B.S.	Binghamton
1990	Norma Gluck, B.A., M.S.W.	Manhattan
1990	Thomas R. Frey, A.B., LL.B.	Rochester

President of The University and Commissioner of Education

Gordon M. Ambach

Executive Deputy Commissioner of Education

Robert J. Maurer

Assistant to the Commissioner for Policy Analysis

Claudio R. Prieto

Director, Information Center on Education

John J. Stiglmeier

Chief, Bureau of Statistical Services

James J. Brady

Chief, Bureau of Educational Data Systems

Leonard D. Powell

LIST OF TABLES

<u>Table</u>		<u>Page</u>
1	Trends in College-Going Rate, New York State, 1969 to 1983	2
2	Trends in New York State High School Graduates Entering Institutions of Higher Education Within and Outside New York State, 1969 to 1983	3
	Public High School Graduates	3
	Nonpublic High School Graduates	4
	Public and Nonpublic High School Graduates	5
3	Distribution of 1982-83 Public High School Graduates, New York State	6
4	Distribution of 1982-83 Nonpublic High School Graduates, New York State	9
5	Distribution of 1982-83 Public and Nonpublic High School Graduates, New York State	12

The State Education Department does not discriminate on the basis of age, color, creed, disability, marital status, veteran status, national origin, race, or sex in the educational programs and activities which it operates. This policy is in compliance with Title IX of the Education Amendments of 1972. Inquiries concerning this policy may be referred to the Department's Affirmative Action Officer, Education Building, Albany, NY 12234.

INTRODUCTION

The following tables present data concerning the distribution of 1982-83 high school graduates of New York State's public and nonpublic schools. The data were secured through the Education Department's Basic Educational Data System and reflect the status of graduates, as reported by school principals, in the fall of 1983.

Table 1 presents trends in the college-going rate of high school graduates from 1969 through 1983. Table 2 shows a 15-year trend of the college-going rate, within and outside New York State.

Tables 3, 4 and 5 show, respectively, the distribution of 1982-83 high school graduates of public schools, nonpublic schools, and public/nonpublic schools combined. These tables are arranged by county within geographic region.

TABLE 1
TRENDS IN COLLEGE-GOING RATE
NEW YORK STATE
1969 TO 1983

Category	Entering Postsecondary Education in the Fall of						
	1969	1974	1979	1980	1981	1982	1983
Percent of Public High School Graduates Entering							
Degree-Granting Institutions							
4-year	36.8%	35.2%	36.9%	37.8%	37.3%	37.1%	37.8%
2-year	22.4	24.5	24.4	24.7	25.6	26.5	27.1
Total	59.2	59.7	61.3	62.5	62.9	63.6	64.9
Other Postsecondary	6.5	4.0	3.7	3.8	3.9	3.9	4.2
Total Postsecondary	65.7%	63.7%	65.0%	66.3%	66.8%	67.5%	69.1%
Percent of Nonpublic High School Graduates Entering							
Degree-Granting Institutions							
4-year	56.6%	57.3%	63.5%	64.7%	65.8%	65.3%	66.0%
2-year	19.0	19.6	16.0	16.2	15.1	16.6	16.6
Total	75.6	76.9	79.5	80.9	80.9	81.9	82.6
Other Postsecondary	5.6	5.9	5.4	5.6	5.8	5.1	4.7
Total Postsecondary	81.2%	82.8%	84.9%	86.5%	86.7%	87.0%	87.3%
Percent of Public and Nonpublic High School Graduates Entering							
Degree-Granting Institutions							
4-year	40.5%	38.6%	40.4%	41.3%	41.2%	41.1%	42.0%
2-year	21.8	23.7	23.2	23.6	24.1	25.1	25.5
Total	62.3	62.3	63.6	64.9	65.3	66.2	67.5
Other Postsecondary	6.3	4.3	3.9	4.1	4.1	4.1	4.3
Total Postsecondary	68.6%	66.6%	67.5%	69.0%	69.4%	70.3%	71.8%

TABLE 2
TRENDS IN NEW YORK STATE HIGH SCHOOL GRADUATES
ENTERING INSTITUTIONS OF HIGHER EDUCATION
WITHIN AND OUTSIDE NEW YORK STATE
1969 - 1983

Location	Entering Postsecondary Education in the Fall of						
	1969	1974	1979	1980	1981	1982	1983
Public High School Graduates							
Percent Entering Institutions Within New York State							
4-year Degree-Granting	24.7%	26.3%	27.1%	27.6%	27.1%	27.7%	28.0%
2-year Degree-Granting	20.3	23.2	23.1	23.3	24.3	25.3	26.0
Total Degree-Granting	45.0	49.5	50.2	50.9	51.4	53.0	54.0
Other Postsecondary	5.7	3.5	3.1	3.1	3.2	3.3	3.6
Total Postsecondary Within New York State	50.7%	53.0%	53.3%	54.0%	54.6%	56.3%	57.6%
Percent Entering Institutions Outside New York State							
4-year Degree-Granting	12.1%	8.9%	9.8%	10.2%	10.2%	9.4%	9.8%
2-year Degree-Granting	2.1	1.3	1.3	1.4	1.3	1.2	1.1
Total Degree-Granting	14.2	10.2	11.1	11.6	11.5	10.6	10.9
Other Postsecondary	0.8	0.5	0.6	0.7	0.7	0.6	0.6
Total Postsecondary Outside New York State	15.0%	10.7%	11.7%	12.3%	12.2%	11.2%	11.5%
Percent Entering Institutions Within and Outside New York State							
4-year Degree-Granting	36.8%	35.2%	36.9%	37.8%	37.3%	37.1%	37.8%
2-year Degree-Granting	22.4	24.5	24.4	24.7	25.6	26.5	27.1
Total Degree-Granting	59.2	59.7	61.3	62.5	62.9	63.6	64.9
Other Postsecondary	6.5	4.0	3.7	3.8	3.9	3.9	4.2
Total Postsecondary Within and Outside New York State	65.7%	63.7%	65.0%	66.3%	66.8%	67.5%	69.1%

TABLE 2
(Continued)

Location	Entering Postsecondary Education in the Fall of						
	1969	1974	1979	1980	1981	1982	1983
Nonpublic High School Graduates							
Percent Entering Institutions Within New York State							
4-year Degree-Granting	41.0%	43.1%	46.0%	46.7%	46.9%	46.9%	47.9%
2-year Degree-Granting	17.5	18.5	15.0	15.3	14.3	15.5	15.8
Total Degree-Granting	58.5	61.6	61.0	62.0	61.2	62.4	63.7
Other Postsecondary	5.2	5.3	4.6	4.8	5.0	4.4	4.0
Total Postsecondary Within New York State	63.7%	66.9%	65.6%	66.8%	66.2%	66.8%	67.7%
Percent Entering Institutions Outside New York State							
4-year Degree-Granting	15.6%	14.2%	17.5%	18.0%	18.9%	18.4%	18.1%
2-year Degree-Granting	1.5	1.1	1.0	0.9	0.8	1.1	0.8
Total Degree-Granting	17.1	15.3	18.5	18.9	19.7	19.5	18.9
Other Postsecondary	0.4	0.6	0.8	0.8	0.8	0.7	0.7
Total Postsecondary Outside New York State	17.5%	15.9%	19.3%	19.7%	20.5%	20.2%	19.6%
Percent Entering Institutions Within and Outside New York State							
4-year Degree-Granting	56.6%	57.3%	63.5%	64.7%	65.8%	65.3%	66.0%
2-year Degree-Granting	19.0	19.6	16.0	16.2	15.1	16.6	16.6
Total Degree-Granting	75.6	76.9	79.5	80.9	80.9	81.9	82.6
Other Postsecondary	5.6	5.9	5.4	5.6	5.8	5.1	4.7
Total Postsecondary Within and Outside New York State	81.2%	82.8%	84.9%	86.5%	86.7%	87.0%	87.3%

TABLE 2
(Concluded)

Location	Entering Postsecondary Education in the Fall of						
	1969	1974	1979	1980	1981	1982	1983
Public and Nonpublic High School Graduates							
Percent Entering Institutions Within New York State							
4-year Degree-Granting	27.7%	28.9%	29.6%	30.1%	29.8%	30.4%	30.9%
2-year Degree-Granting	19.8	22.5	22.0	22.3	22.9	23.9	24.5
Total Degree-Granting	47.5	51.4	51.6	52.4	52.7	54.3	55.4
Other Postsecondary	5.6	3.8	3.3	3.4	3.4	3.5	3.7
Total Postsecondary Within New York State	53.1%	55.2%	54.9%	55.8%	56.1%	57.8%	59.1%
Percent Entering Institutions Outside New York State							
4-year Degree-Granting	12.8%	9.7%	10.8%	11.2%	11.4%	10.7%	11.1%
2-year Degree-Granting	2.0	1.2	1.2	1.3	1.2	1.2	1.0
Total Degree-Granting	14.8	10.9	12.0	12.5	12.6	11.9	12.1
Other Postsecondary	0.7	0.5	0.6	0.7	0.7	0.6	0.6
Total Postsecondary Outside New York State	15.5%	11.4%	12.6%	13.2%	13.3%	12.5%	12.7%
Percent Entering Institutions Within and Outside New York State							
4-year Degree-Granting	40.5%	38.6%	40.4%	41.3%	41.2%	41.1%	42.0%
2-year Degree-Granting	21.8	23.7	23.2	23.6	24.1	25.1	25.5
Total Degree-Granting	62.3	62.3	63.6	64.9	65.3	66.2	67.5
Other Postsecondary	6.3	4.3	3.9	4.1	4.1	4.1	4.3
Total Postsecondary Within and Outside New York State	68.6%	66.6%	67.5%	69.0%	69.4%	70.3%	71.8%

TABLE 3
DISTRIBUTION OF 1982-83 PUBLIC HIGH SCHOOL GRADUATES
NEW YORK STATE

Region and County	Graduates	Entering Postsecondary in New York State			Entering Postsecondary Outside New York State			Employment	Military Service	Other
		4-year	2-year	Other	4-year	2-year	Other			
New York State	184,022	28.0%	26.0%	3.6%	9.8%	1.1%	0.6%	20.4%	4.8%	5.6%
New York City	41,071	42.9	23.4	4.1	6.3	0.5	0.7	13.5	3.9	4.6
Manhattan	6,903	43.3	20.5	3.1	9.0	0.3	1.5	13.0	3.4	6.0
Bronx	6,166	46.4	19.0	4.4	7.5	0.5	0.1	13.2	4.9	4.0
Brooklyn	13,473	40.8	26.4	4.5	4.7	0.3	0.6	13.7	4.0	5.0
Queens	11,473	42.9	26.1	3.7	6.3	0.5	0.4	12.2	3.6	4.3
Richmond	3,056	44.6	16.0	5.8	5.5	1.1	1.6	19.9	4.1	1.5
Nassau-Suffolk Region	40,135	26.9	26.9	3.6	14.5	1.0	0.5	20.3	3.3	2.9
Nassau	18,906	29.4	28.9	3.1	15.7	0.8	0.5	16.6	2.2	3.0
Suffolk	21,229	24.7	25.1	4.0	13.5	1.2	0.5	23.7	4.3	2.9
Mid-Hudson Region	25,655	26.3	22.1	3.1	17.0	2.1	0.9	19.7	3.8	5.0
Dutchess	3,221	20.8	30.9	1.7	12.3	1.4	0.4	24.8	4.1	3.5
Orange	3,692	19.1	28.6	2.3	9.9	1.6	0.4	25.9	6.1	6.2
Putnam	1,126	23.9	13.2	3.6	15.8	8.3	1.0	24.9	4.8	4.5
Rockland	4,134	34.3	24.2	2.4	14.3	2.7	1.5	13.5	2.5	4.5
Sullivan	779	20.0	33.1	1.3	5.4	1.9	1.2	26.4	7.4	3.2
Ulster	2,075	18.0	33.0	1.0	8.2	0.8	1.0	22.9	5.2	9.9
Westchester	10,628	29.7	14.4	4.6	24.7	1.8	0.9	16.7	2.7	4.4
Upper Hudson Region	12,010	20.7	30.2	3.2	7.2	1.0	0.5	26.8	6.3	4.0
Albany	2,851	24.0	29.3	2.7	8.6	0.9	0.5	26.7	4.8	2.5
Columbia	779	14.8	30.3	2.8	6.4	0.9	0.5	33.9	7.2	3.2
Fulton	683	18.6	36.0	1.5	3.8	1.3	0.3	24.9	8.2	5.4
Greene	549	16.0	33.0	4.4	4.2	0.7	0.7	27.3	9.8	3.8
Montgomery	624	12.8	22.1	14.1	9.3	0.3	0.2	27.6	5.1	8.5
Rensselaer	1,779	16.0	33.7	3.7	4.1	1.1	0.8	29.5	8.5	2.6

TABLE 3
(Continued)

Region and County	Graduates	Entering Postsecondary in New York State			Entering Postsecondary Outside New York State			Employment	Military Service	Other
		4-year	2-year	Other	4-year	2-year	Other			
Upper Hudson Region (Cont'd)										
Saratoga	2,591	25.1%	27.8%	2.1%	8.3%	1.1%	0.5%	24.1%	6.1%	4.9%
Schenectady	1,736	23.3	30.4	2.3	9.3	1.3	0.3	23.7	4.8	4.4
Schoharie	418	13.4	33.5	1.2	3.3	0.2	0.5	34.4	7.7	5.7
Lake Champlain-Lake George Region										
	3,326	16.5	26.2	2.9	5.9	1.4	1.1	28.2	8.7	9.1
Clinton	1,056	17.6	23.4	2.7	4.8	0.9	0.9	30.0	7.8	11.7
Essex	466	19.7	26.6	5.4	5.2	1.1	1.1	24.0	12.0	4.9
Hamilton	62	17.7	32.3	1.6	6.5	0.0	1.6	29.0	9.7	1.6
Warren	855	16.0	33.6	1.8	7.0	1.3	0.9	23.6	8.3	7.5
Washington	887	14.0	21.8	2.8	6.4	2.4	1.5	32.5	8.6	10.1
Black River-St. Lawrence Region										
	4,169	15.7	29.1	2.0	2.9	0.8	1.0	28.6	8.7	11.3
Franklin	808	15.1	27.1	3.3	2.4	1.0	1.4	28.0	9.8	12.0
Jefferson	1,197	14.9	29.4	1.6	2.1	0.7	0.7	31.4	7.7	11.6
Lewis	442	13.8	26.2	0.7	2.0	0.0	1.1	38.9	8.8	8.4
St. Lawrence	1,722	17.0	30.6	2.0	3.8	0.9	0.9	24.3	8.8	11.6
Upper Mohawk Valley Region										
	4,300	20.1	37.0	3.2	2.7	0.9	0.3	20.0	6.4	9.4
Herkimer	939	19.3	38.7	2.9	1.9	0.4	0.0	18.7	9.5	8.6
Oneida	3,361	20.4	36.5	3.3	2.9	1.0	0.3	20.4	5.5	9.6
Central Region										
	10,170	22.7	27.0	4.5	7.0	1.6	0.5	23.3	5.3	8.2
Cayuga	1,017	15.1	30.5	4.0	3.6	1.6	1.6	20.0	7.7	15.9
Cortland	582	19.4	27.0	2.6	6.2	0.5	0.9	28.0	8.8	6.7
Madison	1,016	17.4	28.7	4.0	9.1	0.9	0.2	28.4	5.7	5.5
Onondaga	5,875	26.5	28.1	4.5	8.3	1.9	0.4	19.0	4.2	7.1
Oswego	1,680	18.6	20.4	5.5	3.3	1.1	0.2	35.4	6.3	9.3

TABLE 3
(Concluded)

Region and County	Graduates	Entering Postsecondary in New York State			Entering Postsecondary Outside New York State			Employment	Military Service	Other
		4-year	2-year	Other	4-year	2-year	Other			
Southern Tier East Region	6,843	19.8%	31.8%	2.4%	7.5%	1.6%	0.8%	23.5%	5.7%	7.0%
Broome	2,962	18.5	40.8	2.5	7.5	1.2	0.6	20.6	4.1	4.3
Chenango	801	18.5	27.3	2.4	4.2	2.2	0.5	30.6	7.9	6.4
Delaware	648	18.1	27.9	1.1	6.9	1.5	0.8	31.0	6.5	6.2
Otsego	699	25.0	22.2	4.9	8.2	2.7	0.4	18.3	7.7	10.6
Tioga	746	17.2	26.8	3.4	5.8	0.7	2.3	28.3	7.5	8.2
Tompkins	987	24.1	21.5	0.5	11.2	2.0	0.5	21.5	5.9	12.8
Southern Tier Central Region	2,982	12.9	30.2	5.4	8.0	1.2	0.7	23.2	9.3	9.1
Chemung	1,212	12.9	28.8	8.8	9.1	1.5	1.4	25.8	8.7	3.1
Schuyler	219	26.0	20.5	2.7	5.0	0.5	0.0	18.3	11.9	15.1
Steuben	1,551	11.1	32.8	3.0	7.5	1.2	0.3	21.9	9.3	12.9
Southern Tier West Region	4,132	15.4	27.4	3.7	7.7	1.3	1.1	25.8	8.9	8.7
Allegany	707	15.6	28.9	3.5	5.7	1.4	1.3	19.5	11.3	12.9
Cattaraugus	1,390	18.6	22.7	3.1	7.9	1.7	1.2	31.2	9.4	4.3
Chautauqua	2,035	13.2	30.1	4.1	8.4	1.0	1.0	24.2	7.7	10.3
Genesee-Finger Lakes Region	13,598	21.0	26.8	3.3	8.9	0.9	0.6	24.3	5.3	9.0
Genesee	804	18.2	32.5	4.4	5.1	1.4	1.6	21.9	5.2	9.8
Livingston	769	24.7	23.5	2.9	4.4	0.9	0.0	29.4	7.2	7.0
Monroe	8,059	22.8	25.9	3.1	10.8	0.9	0.5	22.0	4.3	9.6
Ontario	1,338	19.7	28.3	3.4	7.7	1.0	0.7	27.3	5.5	6.4
Orleans	640	18.6	20.5	4.7	6.4	0.9	0.0	28.9	8.6	11.4
Seneca	444	14.2	33.1	2.7	8.3	1.1	0.2	27.3	8.3	4.7
Wayne	1,272	15.9	29.1	3.9	5.3	0.3	1.0	27.4	6.7	10.5
Yates	272	12.5	30.5	1.5	5.9	0.0	1.5	37.5	8.5	2.2
Western Region	15,631	26.9	24.6	4.1	6.4	1.0	0.5	23.0	6.5	7.0
Erie	12,090	29.1	23.6	4.4	6.8	0.9	0.6	21.7	6.5	6.3
Niagara	3,030	19.3	28.5	3.0	5.0	1.0	0.3	26.1	6.2	10.6
Wyoming	511	18.6	23.5	3.5	3.5	1.4	1.0	36.4	8.8	3.3

TABLE 4
DISTRIBUTION OF 1982-83 NONPUBLIC HIGH SCHOOL GRADUATES
NEW YORK STATE

Region and County	Graduates	Entering Postsecondary in New York State			Entering Postsecondary Outside New York State			Employment	Military Service	Other
		4-year	2-year	Other	4-year	2-year	Other			
New York State	32,060	47.9%	15.8%	4.0%	18.1%	0.8%	0.7%	8.8%	1.1%	2.9%
New York City	17,197	54.3	10.8	4.8	15.6	0.6	0.5	9.7	1.0	2.8
Manhattan	4,082	45.5	5.8	2.4	34.6	0.4	0.7	8.1	1.1	1.4
Bronx	3,487	54.1	11.5	6.5	13.4	0.4	0.1	11.3	1.8	0.9
Brooklyn	3,908	52.1	14.1	6.0	8.8	1.1	1.2	11.1	0.6	5.2
Queens	4,283	62.0	12.5	3.9	6.2	0.4	0.2	10.3	0.9	3.7
Richmond	1,437	62.9	8.7	6.4	13.4	0.9	0.0	5.5	0.3	1.8
Nassau-Suffolk Region	4,121	42.6	16.3	2.4	26.0	0.8	1.1	5.4	0.8	4.6
Nassau	2,517	45.3	17.3	2.0	26.4	0.6	1.6	5.2	0.5	1.2
Suffolk	1,604	38.5	14.8	3.0	25.4	1.3	0.2	5.5	1.2	9.9
Mid-Hudson Region	3,432	43.9	14.8	4.7	25.8	1.4	1.0	6.1	0.9	1.3
Dutchess	401	33.7	19.0	1.0	38.2	0.5	1.0	5.2	0.5	1.0
Orange	257	31.9	18.3	1.9	35.0	5.1	0.0	6.2	0.8	0.8
Putnam	3	66.7	0.0	0.0	0.0	0.0	0.0	33.3	0.0	0.0
Rockland	417	34.5	10.1	23.0	12.5	5.5	5.0	7.4	0.5	1.4
Sullivan	22	0.0	27.3	68.2	0.0	0.0	0.0	0.0	0.0	4.5
Ulster	80	40.0	33.8	1.3	11.3	2.5	0.0	3.8	2.5	5.0
Westchester	2,252	49.4	13.8	1.8	25.9	0.4	0.4	6.1	1.0	1.2
Upper Hudson Region	1,477	29.8	30.3	2.1	21.9	0.9	0.3	10.0	1.9	2.7
Albany	618	35.1	29.3	1.3	20.6	0.2	0.2	10.0	1.1	2.3
Columbia	47	14.9	10.6	4.3	40.4	4.3	2.1	10.6	2.1	10.6
Fulton	21	9.5	0.0	14.3	52.4	0.0	4.8	19.0	0.0	0.0
Greene	34	26.5	47.1	0.0	2.9	0.0	0.0	8.8	2.9	11.8
Montgomery	91	33.0	24.2	11.0	16.5	0.0	1.1	7.7	6.6	0.0
Rensselaer	459	24.2	34.4	1.3	26.4	0.7	0.2	8.1	2.4	2.18

TABLE 4
(Continued)

Region and County	Graduates	Entering Postsecondary in New York State			Entering Postsecondary Outside New York State			Employment	Military Service	Other
		4-year	2-year	Other	4-year	2-year	Other			
Upper Hudson Region (Cont'd)										
Saratoga	59	27.1%	22.0%	0.0%	20.3%	3.4%	0.0%	20.3%	0.0%	6.8%
Schenectady	147	32.7	36.1	1.4	12.2	4.1	0.0	10.9	1.4	1.4
Schoharie	1	0.0	0.0	0.0	0.0	0.0	0.0	100.0	0.0	0.0
Lake Champlain-Lake George Region										
Clinton	146	39.7	26.0	3.4	15.1	6.2	0.0	6.2	3.4	0.0
Essex	73	26.0	23.3	0.0	43.8	4.1	0.0	1.4	1.4	0.0
Hamilton	0	0.0	0.0	0.0	0.0	0.0	0.0	0.0	0.0	0.0
Warren	53	28.3	37.7	0.0	15.1	1.9	3.8	3.8	3.8	5.7
Washington	8	0.0	12.5	0.0	0.0	0.0	0.0	0.0	0.0	87.5
Black River-St. Lawrence Region										
Franklin	0	0.0	0.0	0.0	0.0	0.0	0.0	0.0	0.0	0.0
Jefferson	107	38.3	43.0	1.9	0.0	0.0	0.9	14.0	1.9	0.0
Lewis	6	0.0	0.0	16.7	16.7	0.0	16.7	16.7	0.0	33.3
St. Lawrence	0	0.0	0.0	0.0	0.0	0.0	0.0	0.0	0.0	0.0
Upper Mohawk Valley Region										
Herkimer	1	100.0	0.0	0.0	0.0	0.0	0.0	0.0	0.0	0.0
Oneida	297	32.3	42.8	3.4	8.1	0.7	0.7	6.4	2.0	3.7
Central Region										
Cayuga	36	0.0	2.8	0.0	27.8	8.3	22.2	0.0	0.0	38.9
Cortland	12	0.0	8.3	0.0	16.7	8.3	16.7	41.7	0.0	8.3
Madison	3	0.0	0.0	0.0	66.7	0.0	0.0	0.0	0.0	33.3
Onondaga	638	41.7	31.0	3.3	13.0	0.2	0.5	5.8	1.7	2.8
Oswego	65	55.4	15.4	4.6	6.2	0.0	0.0	13.8	1.5	3.1

-10-

TABLE 4
(Concluded)

Region and County	Graduates	Entering Postsecondary in New York State			Entering Postsecondary Outside New York State			Employment	Military Service	Other
		4-year	2-year	Other	4-year	2-year	Other			
Southern Tier East Region	222	19.8%	43.7%	0.5%	18.9%	0.9%	0.5%	8.6%	1.8%	5.4%
Broome	193	22.3	47.2	0.5	18.1	1.0	0.5	6.7	1.6	2.1
Chenango	8	0.0	0.0	0.0	0.0	0.0	0.0	12.5	0.0	87.5
Delaware	0	0.0	0.0	0.0	0.0	0.0	0.0	0.0	0.0	0.0
Otsego	0	0.0	0.0	0.0	0.0	0.0	0.0	0.0	0.0	0.0
Tioga	6	16.7	16.7	0.0	33.3	0.0	0.0	16.7	16.7	0.0
Tompkins	15	0.0	33.3	0.0	33.3	0.0	0.0	26.7	0.0	6.7
Southern Tier Central Region	150	29.3	30.0	2.0	19.3	6.0	2.7	5.3	2.7	2.7
Chemung	149	29.5	30.2	2.0	19.5	6.0	2.7	5.4	2.7	2.0
Schuyler	0	0.0	0.0	0.0	0.0	0.0	0.0	0.0	0.0	0.0
Steuben	1	0.0	0.0	0.0	0.0	0.0	0.0	0.0	0.0	100.0
Southern Tier West Region	76	28.9	15.8	0.0	21.1	2.6	5.3	10.5	7.9	7.9
Allegany	19	36.8	0.0	0.0	26.3	5.3	0.0	15.8	5.3	10.5
Cattaraugus	56	26.8	21.4	0.0	19.6	1.8	7.1	8.9	8.9	5.4
Chautauqua	1	0.0	0.0	0.0	0.0	0.0	0.0	0.0	0.0	100.0
Genesee-Finger Lakes Region	1,726	31.7	30.9	3.1	14.5	0.9	0.6	13.6	1.5	3.1
Genesee	97	21.6	48.5	0.0	8.2	0.0	0.0	14.4	5.2	2.1
Livingston	5	0.0	0.0	0.0	0.0	0.0	0.0	0.0	0.0	100.0
Monroe	1,561	32.4	30.4	3.3	15.0	1.0	0.7	13.3	1.3	2.6
Ontario	56	35.7	21.4	3.6	12.5	0.0	0.0	17.9	0.0	8.9
Orleans	0	0.0	0.0	0.0	0.0	0.0	0.0	0.0	0.0	0.0
Seneca	0	0.0	0.0	0.0	0.0	0.0	0.0	0.0	0.0	0.0
Wayne	0	0.0	0.0	0.0	0.0	0.0	0.0	0.0	0.0	0.0
Yates	7	0.0	0.0	0.0	28.6	0.0	0.0	57.1	14.3	0.0
Western Region	2,214	50.2	19.7	3.1	14.4	0.5	0.1	8.7	1.7	1.6
Erie	2,079	51.4	18.4	3.0	14.7	0.5	0.1	8.7	1.7	1.5
Niagara	132	32.6	39.4	5.3	9.8	0.0	0.0	9.1	2.3	1.5
Wyoming	3	0.0	66.7	0.0	0.0	0.0	0.0	0.0	0.0	33.3

-11-

TABLE 5
DISTRIBUTION OF 1982-83 PUBLIC AND NONPUBLIC HIGH SCHOOL GRADUATES
NEW YORK STATE

Region and County	Graduates	Entering Postsecondary in New York State			Entering Postsecondary Outside New York State			Employment	Military Service	Other
		4-year	2-year	Other	4-year	2-year	Other			
New York State	216,082	30.9%	24.5%	3.7%	11.1%	1.0%	0.6%	18.7%	4.3%	5.2%
New York City	58,268	46.3	19.7	4.3	9.1	0.5	0.6	12.4	3.1	4.0
Manhattan	10,985	44.1	15.0	2.8	18.5	0.3	1.2	11.1	2.5	4.3
Bronx	9,653	49.2	16.3	5.1	9.6	0.4	0.1	12.5	3.8	2.9
Brooklyn	17,381	43.4	23.6	4.8	5.6	0.5	0.7	13.1	3.2	5.0
Queens	15,756	48.1	22.4	3.7	6.3	0.5	0.3	11.6	2.9	4.1
Richmond	4,493	50.5	13.6	6.0	8.0	1.0	1.1	15.3	2.9	1.6
Nassau-Suffolk Region	44,256	28.4	25.9	3.5	15.6	1.0	0.6	18.9	3.1	3.1
Nassau	21,423	31.3	27.5	2.9	16.9	0.7	0.6	15.2	2.0	2.8
Suffolk	22,833	25.7	24.3	4.0	14.3	1.2	0.5	22.4	4.1	3.4
Mid-Hudson Region	29,087	28.4	21.3	3.3	18.1	2.0	0.9	18.1	3.4	4.6
Dutchess	3,622	22.2	29.6	1.7	15.1	1.3	0.5	22.6	3.7	3.3
Orange	3,949	19.9	28.0	2.3	11.5	1.8	0.4	24.6	5.7	5.8
Putnam	1,129	24.0	13.2	3.6	15.8	8.2	1.0	24.9	4.8	4.5
Rockland	4,551	34.3	22.9	4.3	14.2	2.9	1.8	12.9	2.4	4.3
Sullivan	801	19.5	33.0	3.1	5.2	1.9	1.1	25.7	7.2	3.2
Ulster	2,155	18.8	33.0	1.0	8.3	0.8	1.0	22.2	5.1	9.7
Westchester	12,880	33.2	14.3	4.1	24.9	1.6	0.8	14.9	2.4	3.9
Upper Hudson Region	13,487	21.7	30.2	3.1	8.8	1.0	0.5	25.0	5.9	3.9
Albany	3,469	26.0	29.3	2.5	10.7	0.8	0.4	23.7	4.2	2.5
Columbia	826	14.8	29.2	2.9	8.4	1.1	0.6	32.6	6.9	3.6
Fulton	704	18.3	34.9	1.8	5.3	1.3	0.4	24.7	8.0	5.3
Greene	583	16.6	33.8	4.1	4.1	0.7	0.7	26.2	9.4	4.3
Montgomery	715	15.4	22.4	13.7	10.2	0.3	0.3	25.0	5.3	7.4
Rensselaer	2,238	17.7	33.9	3.2	8.7	1.0	0.7	25.1	7.2	2.6

TABLE 5
(Continued)

Region and County	Graduates	Entering Postsecondary in New York State			Entering Postsecondary Outside New York State			Employment	Military Service	Other
		4-year	2-year	Other	4-year	2-year	Other			
Upper Hudson Region (Cont'd)										
Saratoga	2,650	25.1%	27.7%	2.0%	8.5%	1.1%	0.5%	24.0%	6.0%	5.0%
Schenectady	1,883	24.1	30.9	2.2	9.6	1.5	0.3	22.7	4.6	4.2
Schoharie	419	13.4	33.4	1.2	3.3	0.2	0.5	34.6	7.6	5.7
Lake Champlain-Lake George Region										
	3,606	17.8	26.3	2.8	7.2	1.7	1.1	26.3	8.3	8.7
Clinton	1,202	20.3	23.7	2.8	6.1	1.6	0.8	27.1	7.2	10.3
Essex	539	20.6	26.2	4.6	10.4	1.5	0.9	21.0	10.6	4.3
Hamilton	62	17.7	32.3	1.6	6.5	0.0	1.6	29.0	9.7	1.6
Warren	908	16.7	33.8	1.7	7.5	1.3	1.1	22.5	8.0	7.4
Washington	895	13.9	21.7	2.8	6.4	2.3	1.5	32.2	8.5	10.8
Black River-St. Lawrence Region										
	4,282	16.2	29.4	2.0	2.8	0.7	1.0	28.2	8.5	11.1
Franklin	808	15.1	27.1	3.3	2.4	1.0	1.4	28.0	9.8	12.0
Jefferson	1,304	16.8	30.5	1.6	1.9	0.6	0.7	30.0	7.2	10.7
Lewis	448	13.6	25.9	0.9	2.2	0.0	1.3	38.6	8.7	8.7
St. Lawrence	1,722	17.0	30.6	2.0	3.8	0.9	0.9	24.3	8.8	11.6
Upper Mohawk Valley Region										
	4,598	20.9	37.3	3.2	3.0	0.9	0.3	19.1	6.1	9.0
Herkimer	940	19.4	38.6	2.9	1.9	0.4	0.0	18.7	9.5	8.6
Oneida	3,658	21.3	37.0	3.3	3.3	1.0	0.4	19.2	5.2	9.2
Central Region										
	10,924	23.9	27.1	4.4	7.4	1.5	0.6	22.1	5.1	7.9
Cayuga	1,053	14.6	29.5	3.9	4.5	1.8	2.3	19.3	7.4	16.7
Cortland	594	19.0	26.6	2.5	6.4	0.7	1.2	28.3	8.6	6.7
Madison	1,019	17.4	28.7	4.0	9.2	0.9	0.2	28.4	5.7	5.6
Onondaga	6,513	27.9	28.3	4.4	8.8	1.7	0.4	17.7	4.0	6.7
Oswego	1,745	19.9	20.2	5.4	3.4	1.0	0.2	34.6	6.1	9.1

-13-

TABLE 5
(Concluded)

Region and County	Graduates	Entering Postsecondary in New York State			Entering Postsecondary Outside New York State			Employment	Military Service	Other
		4-year	2-year	Other	4-year	2-year	Other			
Southern Tier East Region	7,065	19.8%	32.2%	2.3%	7.9%	1.5%	0.8%	23.0%	5.6%	6.9%
Broome	3,155	18.8	41.2	2.4	8.2	1.2	0.6	19.7	3.9	4.1
Chenango	809	18.3	27.1	2.3	4.2	2.2	0.5	30.4	7.8	7.2
Delaware	648	18.1	27.9	1.1	6.9	1.5	0.8	31.0	6.5	6.2
Otsego	699	25.0	22.2	4.9	8.2	2.7	0.4	18.3	7.7	10.6
Tioga	752	17.2	26.7	3.3	6.0	0.7	2.3	28.2	7.6	8.1
Tompkins	1,002	23.8	21.7	0.5	11.6	2.0	0.5	21.6	5.8	12.7
Southern Tier Central Region	3,132	13.7	30.2	5.2	8.5	1.5	0.8	22.4	8.9	8.7
Chemung	1,361	14.7	28.9	8.1	10.2	2.0	1.5	23.6	8.0	2.9
Schuyler	219	26.0	20.5	2.7	5.0	0.5	0.0	18.3	11.9	15.1
Steuben	1,552	11.1	32.7	3.0	7.5	1.2	0.3	21.9	9.3	13.0
Southern Tier West Region	4,208	15.7	27.2	3.6	8.0	1.3	1.2	25.5	8.8	8.7
Allegany	726	16.1	28.1	3.4	6.2	1.5	1.2	19.4	11.2	12.8
Cattaraugus	1,446	18.9	22.6	3.0	8.4	1.7	1.4	30.4	9.3	4.4
Chatauqua	2,036	13.2	30.1	4.1	8.3	1.0	1.0	24.2	7.7	10.4
Genesee-Finger Lakes Region	15,324	22.2	27.2	3.3	9.5	0.9	0.6	23.1	4.9	8.3
Genesee	901	18.5	34.2	3.9	5.4	1.2	1.4	21.1	5.2	9.0
Livingston	774	24.5	23.4	2.8	4.4	0.9	0.0	29.2	7.1	7.6
Monroe	9,620	24.3	26.7	3.2	11.5	0.9	0.5	20.6	3.8	8.5
Ontario	1,394	20.3	28.0	3.4	7.9	0.9	0.7	26.9	5.3	6.5
Orléans	640	18.6	20.5	4.7	6.4	0.9	0.0	28.9	8.6	11.4
Seneca	444	14.2	33.1	2.7	8.3	1.1	0.2	27.3	8.3	4.7
Wayne	1,272	15.9	29.1	3.9	5.3	0.3	1.0	27.4	6.7	10.5
Yates	279	12.2	29.7	1.4	6.5	0.0	1.4	38.0	8.6	2.2
Western Region	17,845	29.8	24.0	4.0	7.4	0.9	0.5	21.2	5.9	6.3
Erie	14,169	32.4	22.9	4.2	8.0	0.9	0.5	19.8	5.8	5.6
Niagara	3,162	19.9	29.0	3.1	5.2	1.0	0.3	25.4	6.0	10.2
Wyoming	514	18.5	23.7	3.5	3.5	1.4	1.0	36.2	8.8	3.5

-14-