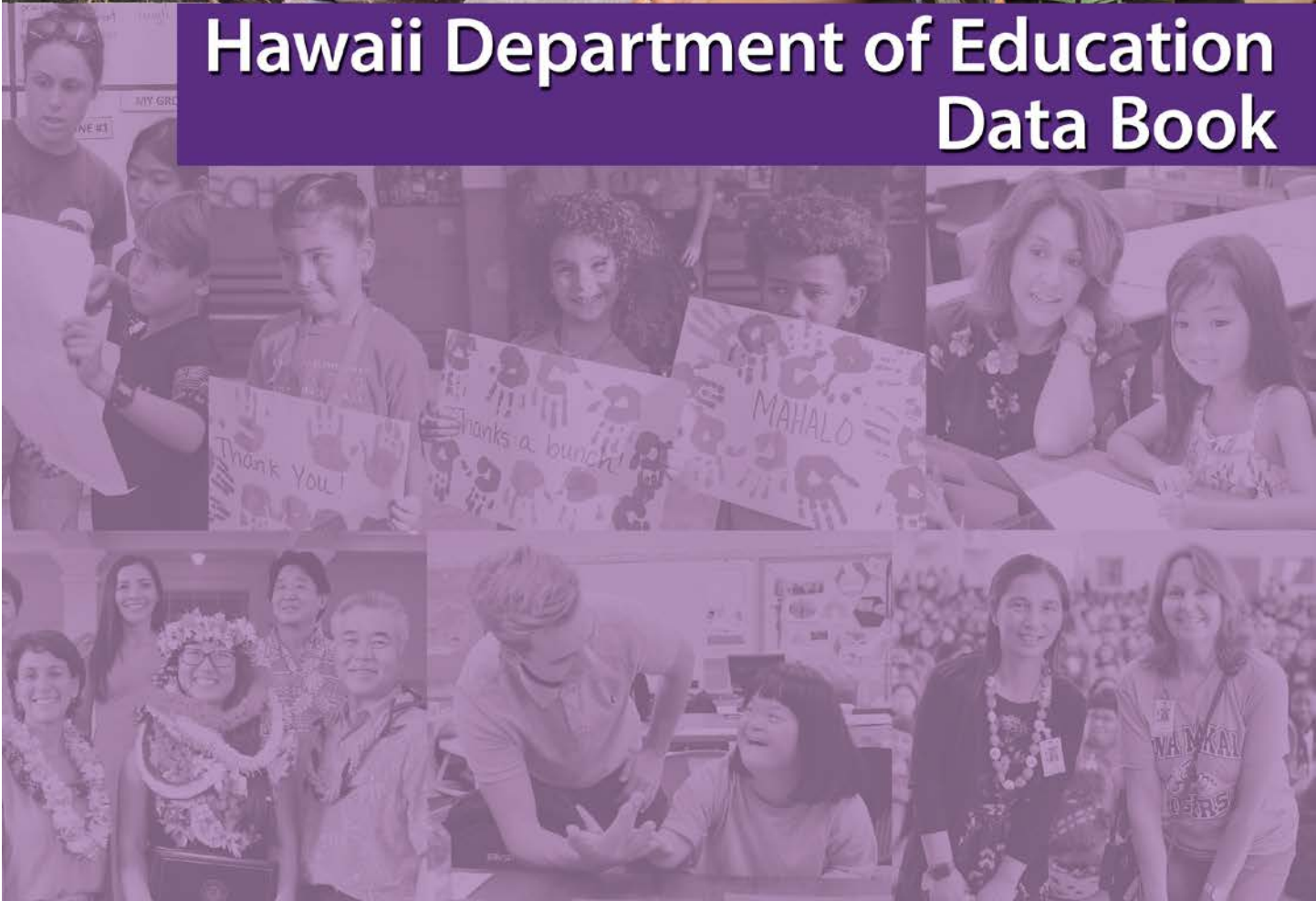




2019

Hawaii Department of Education Data Book



Office of the Superintendent | 30th Annual Report | July 2020





**The Honorable David Y. Ige
Governor, State of Hawaii**

BOARD OF EDUCATION

Catherine Payne, Chairperson
Kenneth Uemura, Vice Chairperson

Shanty Asher Christine Namau'u
Kaimana Barcarse Dwight Takeno
Maggie Cox Bruce Voss
Lynn Fallin Captain Lyn Yatko (Military Liaison)
Hunter Harris (Student Representative)

DEPARTMENT OF EDUCATION

Dr. Christina M. Kishimoto, Superintendent of Education

Phyllis Unebasami, Deputy Superintendent

Heidi Armstrong, Assistant Superintendent
Office of Student Support Services

Alisa Bender, Interim Assistant Superintendent
Office of Curriculum and Instructional Design

Brook Conner, Assistant Superintendent & Chief Information Officer
Office of Information Technology Services

Cynthia Covell, Assistant Superintendent
Office of Talent Management

Brian Hallett, Assistant Superintendent & Chief Financial Officer
Office of Fiscal Services

Rodney Luke, Assistant Superintendent
Office of Strategy, Innovation and Performance

Randall Tanaka, Assistant Superintendent
Office of School Facilities and Support Services

Rochelle Mahoe, Ph.D
Farrington-Kaiser-Kalani Complex Area Superintendent
Linell Dilwith
Kaimuki-McKinley-Roosevelt Complex Area Superintendent
John Erickson
Aiea-Moanalua-Radford Complex Area Superintendent
Robert Davis
Leilehua-Mililani-Waialua Complex Area Superintendent
Sean Tajima
Interim Campbell-Kapolei Complex Area Superintendent
Sione Thompson
Nanakuli-Waianae Complex Area Superintendent
Keith Hui
Pearl City-Waipahu Complex Area Superintendent

Matthew Ho
Castle-Kahuku Complex Area Superintendent
Lanelle Hibbs
Kailua-Kalaheo Complex Area Superintendent
Chad Keone Farias
Kau-Keeau-Pahoa Complex Area Superintendent
Esther Kanehailua
Hilo-Waiakea Complex Area Superintendent
Janette Snelling
Honokaa-Kealahakehe-Kohala-Konawaena Complex Area Superintendent
Kathleen Dimino, Ph.D
Baldwin-Kekaulike-Maui Complex Area Superintendent
Lindsay Ball
Hana-Lahainaluna-Lanai-Molokai Complex Area Superintendent

Paul Zina
Kapaa-Kauai-Waimea Complex Area Superintendent

Contents

Data Insights	1
Students & Schools.....	1
Progress & Outcomes.....	1
Resources & Support.....	1
At-A-Glance	2
Table 1. Official Fall Enrollment for Grades K to 12, Public and Private Schools.....	2
Figure 1. Percent of Public School Students With Special Needs, Unduplicated Count.....	2
Table 2. Department of Education Teacher Credentials.....	2
Table 3. Funding By Source and Year (In Millions).....	3
Table 4. Safety and Well-Being of Students.....	3
Table 5. Hawaii Statewide Assessment Program, Percent Meeting Standard.....	3
Table 6. English Language Arts/Literacy, Mathematics, and Science by Grade and Achievement Level.....	4
Figure 2. Percent Meeting Standard, ESEA English Language Arts, State Summary*.....	5
Figure 3. Percent Meeting Standard, ESEA Mathematics, State Summary*.....	5
Figure 4. Percent Proficient, Science, State Summary*.....	5
Table 7. Four-Year Graduation and Dropout Rates.....	6
Table 8. High School Diplomas.....	6
Table 9. Honors Recognition Certificates.....	6
Table 10. Advanced Placement (AP) Program.....	6
Profiles and Trends	7
Table 11. Number of Public Schools (and Percentage of Total Schools by Type).....	7
Table 12. Student Enrollment.....	7
Table 13. Progress and Completion.....	7
Table 14. Staff, Full-Time Equivalent Positions.....	8
Table 15. State Demographics.....	8

School Finance..... 9

 Table 16. State School Budget 9

 Table 17. Key Finance Indicators 9

 Figure 5. Percentage of State & Local Expenditures per Capita Supporting Public Schools..... 10

Educational Assessments.....10

 Table 18. National Assessment of Educational Progress (NAEP)..... 10

 Figure 6. National Assessment of Educational Progress (NAEP), Percent Proficient & Advanced in Grade 4 Reading and Mathematics..... 11

 Figure 7. National Assessment of Educational Progress (NAEP), Percent Proficient & Advanced in Grade 8 Reading and Mathematics..... 11

 Table 19. Hawaii Statewide Assessment Program, Percent Meeting Standard 12

 Table 20. Students by Complex in SY2018-19 13

 Table 21. Teachers by Complex in SY2018-19 14

 Table 22. SY2017-18 Wellness Indicators by Complex (results for participating schools) 15

 Table 23. Percent Meeting Standard on the Hawaii Statewide Assessment Program English Language Arts/Literacy Assessments by Grade and Complex for SY2018-19 16

 Table 24. Percent Meeting Standard on the Hawaii Statewide Assessment Program Mathematics Assessments by Grade and Complex for SY2018-19 17

 Table 25. Percent Meets and Exceeds Proficiency on the Hawaii Statewide Assessment Program Science Assessments by Grade and Complex for SY2018-19 18

Appendices.....19

 Appendix A. Glossary..... 19

 Appendix B. References and Resources 23

 Appendix C. Supplemental Data Tables..... 26

Data Insights

Students & Schools

The data highlighted below are for School Year (SY) 2018-19:

- Public school enrollment was 179,698 (Table 1, page 2).
- Charter school enrollment increased by 912 students, while department school enrollment decreased by 1,116 students (Table 1, page 2).

The data highlighted below are for SY 2016-17 to SY 2018-19, unless noted:

- The number of English Language Learner students increased by 3,381 or 26% (Table 12, page 7).
- The number of Economically Disadvantaged students decreased by 5,190 or 5.7% (Table 12, page 7).
- Fifty-four percent of public school students were identified as economically disadvantaged, special education, multiple special needs, Section 504, or English Language Learners. This percentage did not change from the prior year (Figure 1, page 2).
- The percentage of dropouts improved from 14.2% to 11.8%, and the graduation rate rose from 82.6% to 85.1% (Table 7, page 6).

Progress & Outcomes

Hawaii State Assessment Program (HSAP)

The data highlighted below are for SY 2018-19, unless noted:

- English Language Arts/Literacy: 54% of students met standards. This is a 4 percentage point increase from 2016-17 (Table 5, page 3).
- Mathematics: 43% of students met standards, representing a 1 percentage point increase over the prior year (Table 5, page 3).
- Science: 44% of students met standards, representing a 2 percentage point decrease from the prior year (Table 5, page 3).
- Grade-level achievement for SY 2017-18 and SY 2018-19 may be found on Table 6 (page 4).

National Assessment of Educational Progress (NAEP)

- Grade 4 Reading: 34% were proficient or advanced, placing Hawaii on par with the national average in 2019. In 2015 and 2017, Hawaii trailed the national average by 6 percentage points and 4 percentage points, respectively (Table 18, page 10).
- Grade 8 Reading: 29% were proficient or advanced in 2019. This was below the national average by 3 percentage points. The difference in 2017 was 6 percentage points (Table 18, page 10).
- Grade 4 Mathematics: 40% were proficient or advanced, placing Hawaii on par with the national average in 2019. In 2017, Hawaii trailed the national average by 2 percentage points (Table 18, page 10).
- Grade 8 Mathematics: 28% were proficient or advanced, placing Hawaii 5 percentage points below the national average in 2019. In 2017, performance was 7 points below the national average (Table 18, page 10).

Resources & Support

- Hawaii's per pupil expenditure increased by 4.1% to \$14,322 for the 2016-17 school year (most current available information) (Table 17, page 9).
- Hawaii ranked 50th (last) in the nation when comparing the percent of state and local expenditures for public education per capita (Table 17, page 9).

At-A-Glance

Note: Unless otherwise noted, data are about "public schools" and represents both department and charter schools; percentages with one decimal place have been truncated at the first decimal place.

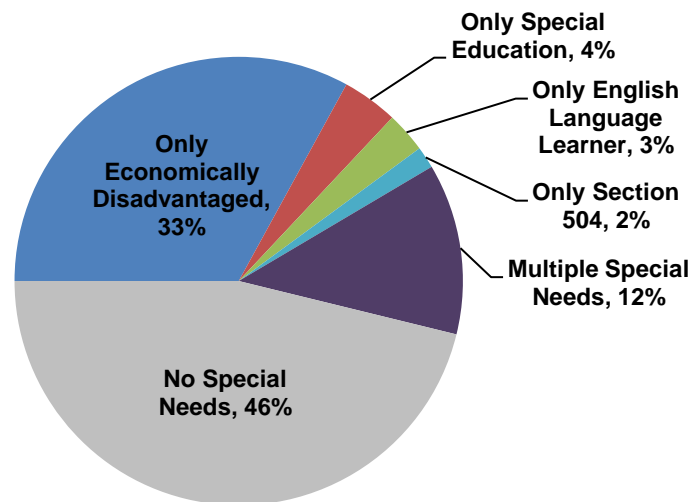
Table 1. Official Fall Enrollment for Grades K to 12, Public and Private Schools

	2016-17	2017-18	2018-19
Public schools	179,902	179,255	179,698
% of total enrollment	84.5%	84.7%	85.1%
Department schools	169,268	168,095	168,152
% of public schools enrollment	94.0%	93.7%	93.5%
Charter schools	10,634	11,160	11,546
% of public schools enrollment	5.9%	6.2%	6.4%
Private Schools	32,888	32,376	31,312
% of total enrollment	15.4%	15.2%	14.8%
Total	212,790	211,631	211,010

Note: Due to rounding percentages may not total to 100%.

Sources: Hawaii State Department of Education: Office of Strategy, Innovation and Performance; Assessment and Accountability Branch; Hawaii Association of Independent Schools.

Figure 1. Percent of Public School Students With Special Needs, Unduplicated Count



Source: Hawaii State Department of Education: Office of Strategy, Innovation and Performance; Assessment and Accountability Branch. Graph represents student count as of 12/21/2018.

Table 2. Department of Education Teacher Credentials

	2016-17	2017-18	2018-19
Fully Licensed	96%	95%	95%
Advanced Degree	37%	37%	38%
5+ Years at the Same School	58%	58%	57%

Note: These figures do not include teachers at charter schools.

Source: Hawaii State Department of Education: Office of Talent Management.

Table 3. Funding By Source and Year (In Millions)

	2016-17	2017-18	2018-19
Appropriated Funds	\$2,953	\$3,148	\$3,302
State			
General	\$2,584	\$2,773	\$2,930
Special	\$84	\$84	\$84
Trust	\$18	\$16	\$16
Federal	\$267	\$275	\$272

Source: Hawaii State Department of Education: Office of Fiscal Services.

Table 4. Safety and Well-Being of Students

	2016-17		2017-18*		2018-19	
Students Not Suspended	96%		96%		96%	
Positive Perceptions	Safety	Well-Being	Safety	Well-Being	Safety	Well-Being
Students						
Elementary	76%	78%	72%	n/a	71%	n/a
Middle	69%	67%	64%	n/a	64%	n/a
High	71%	65%	63%	n/a	64%	n/a
Teachers	78%	76%	75%	75%	74%	74%

Note: Beginning in 2017-18, these figures include charter schools.

*From 2017-18 the Student Survey contains one dimension (Safety); In prior years there were four dimensions (Safety, Well-Being, Satisfaction, and Involvement/Engagement).

Source: Hawaii State Department of Education: Office of Strategy, Innovation and Performance; Assessment and Accountability Branch.

Table 5. Hawaii Statewide Assessment Program, Percent Meeting Standard

Assessment	2016-17	2017-18	2018-19
English Language Arts/Literacy*	50%	54%	54%
Mathematics*	42%	42%	43%
Science**	46%	46%	44%

Note: *Achievement results are based on the Hawaii State Assessment (HSA) Program which comprises of the state's summative assessments, including the Smarter Balanced Assessment (SBA), HSA-Alternate (HSA-Alt) and Kaipuni Assessment for Educational Outcomes (KAEO). These results are based on **students enrolled for the school year**.

The percent proficient for grades 4 and 8 are based on **students enrolled for the school year who were administered the HSA Science, HSA-Alt or KAEO. The percent proficient for high school students are based on students who were administered either the Biology I End-of-Course Exam or the HSA Alt for Grade 11. For SY2018-19, results are based on a bridge test using Next Generation Science Standards (NGSS).

Source: Hawaii State Department of Education: Office of Strategy, Innovation and Performance; Assessment and Accountability Branch.

Table 6. English Language Arts/Literacy, Mathematics, and Science by Grade and Achievement Level

English Language Arts/Literacy %*								
Grade	2017-18				2018-19			
	Not met	Nearly Met	Met	Exceeded	Not met	Nearly Met	Met	Exceeded
3	25%	22%	24%	28%	26%	22%	23%	29%
4	30%	19%	24%	27%	30%	18%	24%	28%
5	25%	19%	31%	26%	25%	19%	30%	26%
6	23%	25%	33%	20%	23%	25%	33%	19%
7	24%	23%	35%	17%	25%	23%	35%	18%
8	21%	24%	37%	18%	23%	25%	34%	18%
11	17%	22%	34%	26%	18%	23%	33%	26%
Mathematics %*								
Grade	2017-18				2018-19			
	Not met	Nearly Met	Met	Exceeded	Not met	Nearly Met	Met	Exceeded
3	23%	23%	29%	25%	23%	22%	29%	27%
4	22%	31%	28%	19%	21%	30%	28%	21%
5	29%	28%	20%	24%	29%	27%	19%	25%
6	29%	29%	22%	20%	31%	28%	21%	19%
7	35%	28%	21%	16%	35%	26%	20%	18%
8	40%	23%	18%	20%	37%	24%	18%	20%
11	40%	28%	22%	10%	42%	28%	20%	10%
Science %**								
Grade	2017-18				2018-19			
	Well-Below	Approaches	Meets	Exceeds	Well-Below	Approaches	Meets	Exceeds
4	9%	34%	44%	13%	9%	34%	43%	14%
8	24%	32%	31%	13%	29%	30%	30%	11%
High School	26%	40%	26%	9%	26%	39%	25%	9%

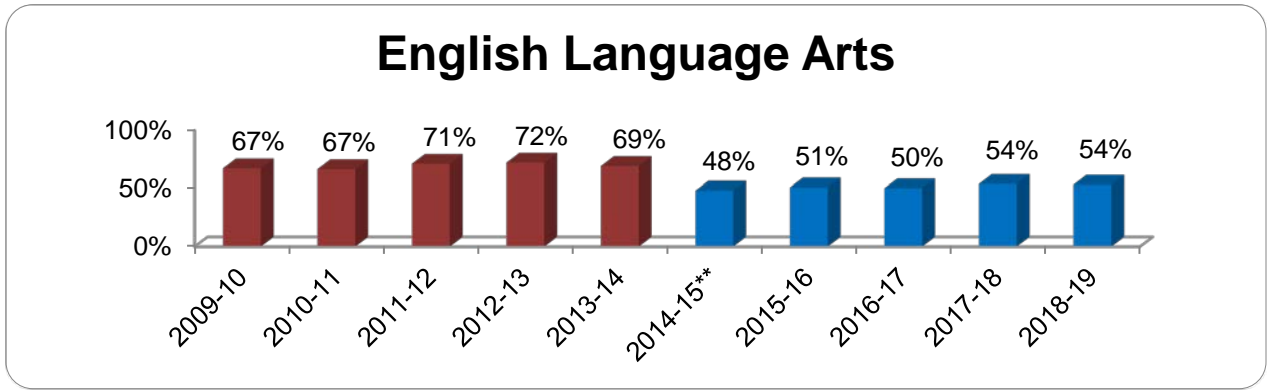
Note: Due to rounding percentages may not total to 100%

*Achievement results are based on the HSA Program which comprises of the state's summative assessments, including SBA HSA-Alt, and KAEO. These results are based on **students enrolled for the school year**.

The percent proficient for grades 4 and 8 are based on **students enrolled for the school year who were administered the HSA Science, HSA-Alt, or KAEO. The percent proficient for high school (HS) students are based on students who were administered either the Biology I End-of-Course Exam or the HSA-Alt for Grade 11. For SY 2018-19, results are based on a bridge test using NGSS.

Source: Hawaii State Department of Education: Office of Strategy, Innovation and Performance; Assessment and Accountability Branch.

Figure 2. Percent Meeting Standard, ESEA English Language Arts, State Summary*

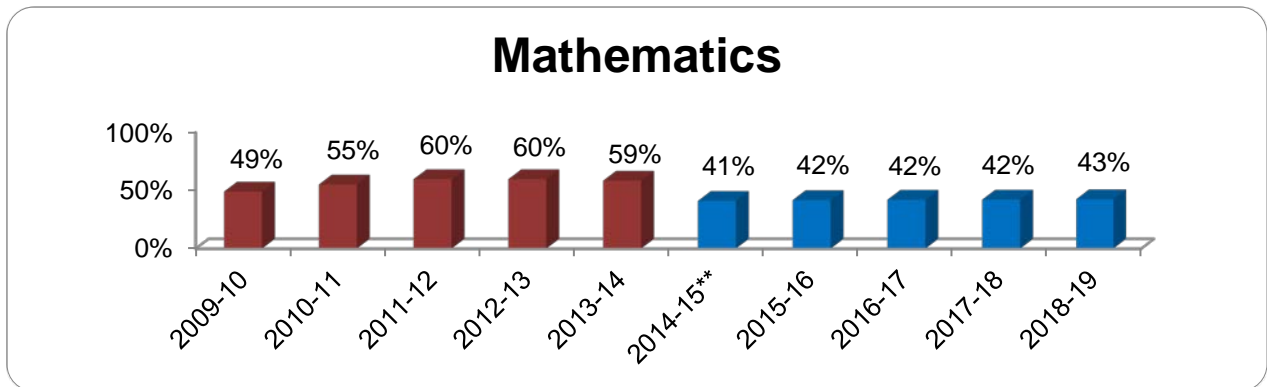


Note: *Achievement results are based on the HSA Program which comprises of the state's summative assessments, including SBA, HSA-Alt, and KAEO. These results are based on **students enrolled for the school year**.

**Beginning 2014-15, the SBA was administered replacing the HSA summative assessment. This resulted in the high school tested grade moving from 10th to 11th grade. No changes were made to other tested grades (grades 3-8).

Source: Hawaii State Department of Education: Office of Strategy, Innovation and Performance; Assessment and Accountability Branch.

Figure 3. Percent Meeting Standard, ESEA Mathematics, State Summary*

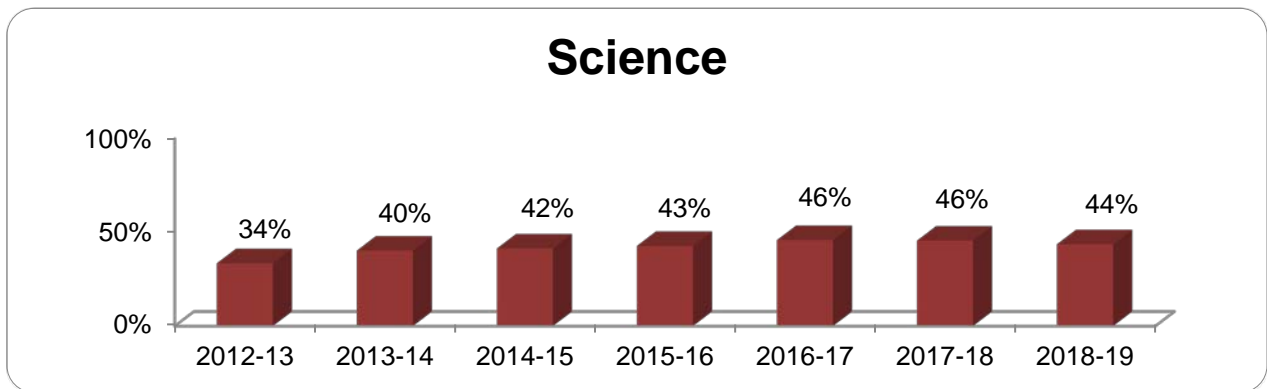


Note: *Achievement results are based on the HSA Program which comprises of the state's summative assessments, including SBA, HSA-Alt, and KAEO. These results are based on **students enrolled for the school year**.

**Beginning 2014-15, the SBA was administered replacing the HSA summative assessment. This resulted in the high school tested grade moving from 10th to 11th grade. No changes were made to other tested grades (grades 3-8).

Source: Hawaii State Department of Education: Office of Strategy, Innovation and Performance; Assessment and Accountability Branch.

Figure 4. Percent Proficient, Science, State Summary*



Note: *The percent proficient for grades 4 and 8 are based on **students enrolled for the school year** who were administered the HSA Science, HSA-Alt, or KAEO. The percent proficient for high school students are based on students who were administered either the Biology I End-of-Course Exam or the HSA-Alt for Grade 11. For SY2018-19, results are based on a bridge test using NGSS.

Source: Hawaii State Department of Education: Office of Strategy, Innovation and Performance; Assessment and Accountability Branch.

Table 7. Four-Year Graduation and Dropout Rates

	2016-17	2017-18	2018-19
Graduation	82.6%	84.4%	85.1%
Dropouts	14.2%	12.6%	11.8%
Others*	3.2%	3.0%	3.1%

Note: *Others include high school completers who received a special education certificate of completion in lieu of a diploma and students who are still attending school and did not graduate within the four-year time frame.

Source: Hawaii State Department of Education: Office of Strategy, Innovation and Performance; Assessment and Accountability Branch.

Table 8. High School Diplomas

	2016-17	2017-18	2018-19
Regular Diploma	94.9%	94.6%	95.4%

Source: Hawaii State Department of Education: Office of Strategy, Innovation and Performance; Assessment and Accountability Branch.

Table 9. Honors Recognition Certificates

	2016-17	2017-18	2018-19
Academic Honors Recognition Certificate	21.5%	22.9%	25.5%
CTE Honors Recognition Certificate	9.1%	11.9%	14.9%
STEM Honors Recognition Certificate	2.9%	3.5%	3.8%

Note: Beginning with the Class of 2016, Honors Recognition Certificates are awarded to students who earned a high school diploma and completed the requirements for the Academic, CTE, or STEM Honors. Students are able to earn a certificate for each honors distinction. Each percent is the percentage based on the number of students in the respective class.

Source: Hawaii State Department of Education: Office of Strategy, Innovation and Performance; Assessment and Accountability Branch.

Table 10. Advanced Placement (AP) Program

	2016-17	2017-18	2018-19
Number of students enrolled in at least one AP course	7,931	7,943	6,956
Number of students who took at least one AP exam	6,599	6,945	6,985
Number of exams taken	9,903	10,453	10,763
Number of AP exam results with a score of 3 or higher	4,178	4,560	4,745
Percent of exams passed	42%	44%	44%

Source: Hawaii State Department of Education: Office of Curriculum and Instructional Design.

Profiles and Trends

Table 11. Number of Public Schools (and Percentage of Total Schools by Type)

Type of School	2016-17		2017-18		2018-19	
Total	290	100%	292	100%	292	100%
DOE Elementary	168	58%	168	58%	167	57%
DOE Middle/Intermediate	38	13%	38	13%	38	13%
DOE High	33	11%	33	11%	33	11%
DOE Multi-Level	16	6%	16	5%	17	6%
Special (HSDB*)	1	<1%	1	<1%	1	<1%
Charter	34	12%	36	12%	36	12%
Complex Areas	15	n/a	15	n/a	15	n/a

Note: *Hawaii School for the Deaf and Blind

Source: Hawaii State Department of Education: Office of Strategy, Innovation and Performance; Assessment and Accountability Branch.

Table 12. Student Enrollment

Enrollment	2016-17		2017-18		2018-19	
Official Enrollment Count	179,902	100%	179,255	100%	179,698	100%
K-6	102,300	57%	101,214	56%	100,873	56%
7-8	26,960	15%	27,223	15%	27,626	15%
9-12	50,642	28%	50,818	28%	51,199	28%
Special Education (SPED)	17,449	10%	17,279	10%	17,591	10%
English Language Learner (ELL)	12,894	7%	14,740	8%	16,275	9%
Economically Disadvantaged*	90,950	51%	87,653	49%	85,760	48%

Note: Enrollment totals may not be exactly 100% due to rounding.

*Students whose family income qualifies them for assistance through the National School Lunch Program are included in the "economically disadvantaged" count. Also included are estimated counts of students based on the Community Eligibility (CEP) requirements established by the U.S. Department of Agriculture.

Source: Hawaii State Department of Education: Office of Strategy, Innovation and Performance; Assessment and Accountability Branch.

Table 13. Progress and Completion

	2016-17	2017-18	2018-19
Daily Average Attendance Rates			
Elementary	94.7%	94.6%	94.5%
Middle/Intermediate	94.4%	94.3%	94.3%
High	92.7%	92.6%	92.6%
Multi-level	91.1%	91.2%	91.2%
Charter	94.3%	94.2%	93.9%
Retention Rates			
Elementary	<0.5%	<0.5%	<0.5%
Middle/Intermediate	0.8%	0.6%	0.6%
Graduation Rate (on time) Grades 9 through 12	82.6%	84.4%	85.1%
Drop Out Rate Grades 9 through 12	14.2%	12.6%	11.8%
Others* Grades 9 through 12	3.2%	3.0%	3.1%

Note: *Others include high school completers who received a special education certificate of completion in lieu of a diploma and students who are still attending school and did not graduate within the four-year time frame.

Source: Hawaii State Department of Education: Office of Strategy, Innovation and Performance; Assessment and Accountability Branch.

Table 14. Staff, Full-Time Equivalent Positions

Positions	2016-17	2017-18	2018-19
Teachers			
Classroom Teachers	11,499.6	11,732.4	11,819.1
Librarians	148.5	142.5	134.5
Counselors	634.2	652.6	659.7
Administrators			
School	693.8	711.5	716.7
State & Complex Area	301.0	324.0	339.5
Other Support Staff	9,039.2	9,276.5	9,194.3
Total	22,316.3	22,839.5	22,863.8

Source: Hawaii State Department of Education: Office of Strategy, Innovation and Performance; Assessment and Accountability Branch.

Table 15. State Demographics

Census Data	2016 Est.	2017 Est.	2018 Est.
Populations	1,413,673	1,421,658	1,422,029
Youth age under 5 years	91,645	91,417	90,388
Youth age 5-9	84,839	84,608	85,114
Youth age 10-14	83,667	84,030	83,667
Youth age 15-19	79,892	78,077	77,674
Median Age, in years	38.5	38.8	38.9
Households			
Total	452,030	455,502	456,782
Families	314,721	317,764	319,069
Avg. Family Size	3.60	3.59	3.58
Income*			
Median Family Income	\$83,451	\$87,024	\$90,935
Per Capita Income	\$30,970	\$32,511	\$34,035
Poverty, Families in	7.3%	7.0%	6.7%
Educational Attainment			
Percent high school or higher	91.3%	91.6%	91.8%
Percent 4-yr degree or higher	31.4%	32.0%	32.5%

Note: Percentage figures are rounded at the first decimal place.

*Income figures are reported in inflation adjusted dollars, using 5-year estimates.

Source: U.S. Census Bureau; American Community Survey.

School Finance

Table 16. State School Budget

	2016-17	2017-18	2018-19
APPROPRIATED FUNDS (millions)			
State			
General	\$2,584	\$2,773	\$2,930
Special	\$84	\$84	\$84
Trust	\$18	\$16	\$16
Federal	\$267	\$275	\$272
TOTAL	\$2,953	\$3,148	\$3,302
EXPENDITURES (millions)			
State			
General	\$2,511	\$2,727	\$2,883
Special	\$44	\$52	\$47
Trust	\$7	\$11	\$15
Federal	\$260	\$222	\$257
TOTAL	\$2,822	\$3,012	\$3,202

Note: Figures include both expenditures and encumbrances for the DOE and Public Charter Schools.

Total of State and Federal funds may not equal Appropriated Funds due to rounding.

Source: Hawaii State Department of Education: Office of Fiscal Services.

Table 17. Key Finance Indicators

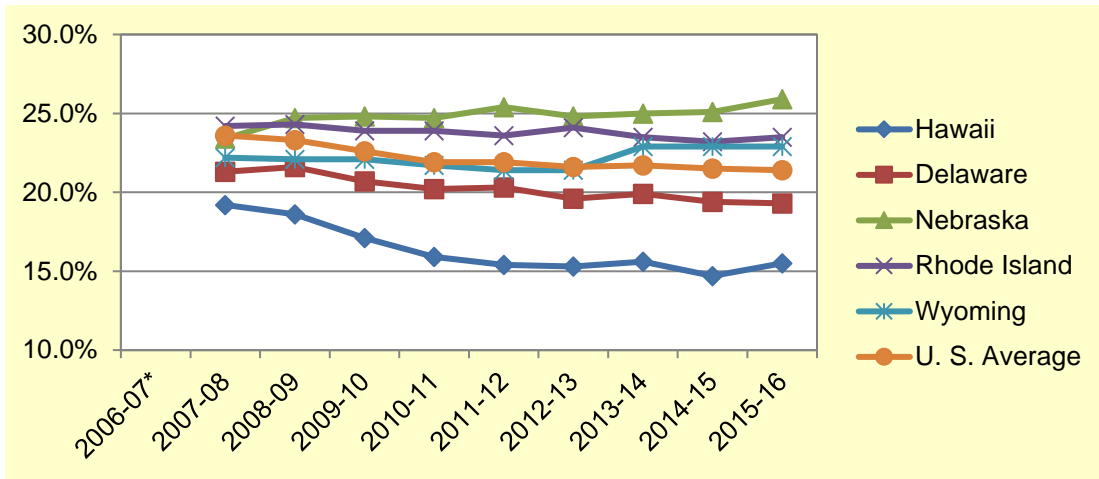
	2014-15	2015-16	2016-17
Key Finance Indicators			
Per pupil expenditure	\$12,855	\$13,748	\$14,322
Percent state & local expenditures for public education (per capita)	14.7%	15.5%	n/a
Rank*	50th	50th	n/a

Note: Data reported was the most current available at the time of publication.

*Rank is determined by comparing the "Percent state and local expenditures for public education (per capita)" of Hawaii to that of the other 49 states.

Sources: U.S. Census Bureau; National Center for Education Statistics.

Figure 5. Percentage of State & Local Expenditures per Capita Supporting Public Schools



Note: Comparisons are made with states most similar to Hawaii on measures directly related to school finance. Measures include K-12 enrollment, population, per capita income, per capita state and local revenue, and per capita state and local expenditures. Data reported was the most current data available at the time of publication.

*No data available for 2006-07.

Source: Digest of Education Statistics, National Center for Education Statistics, ED.

Educational Assessments

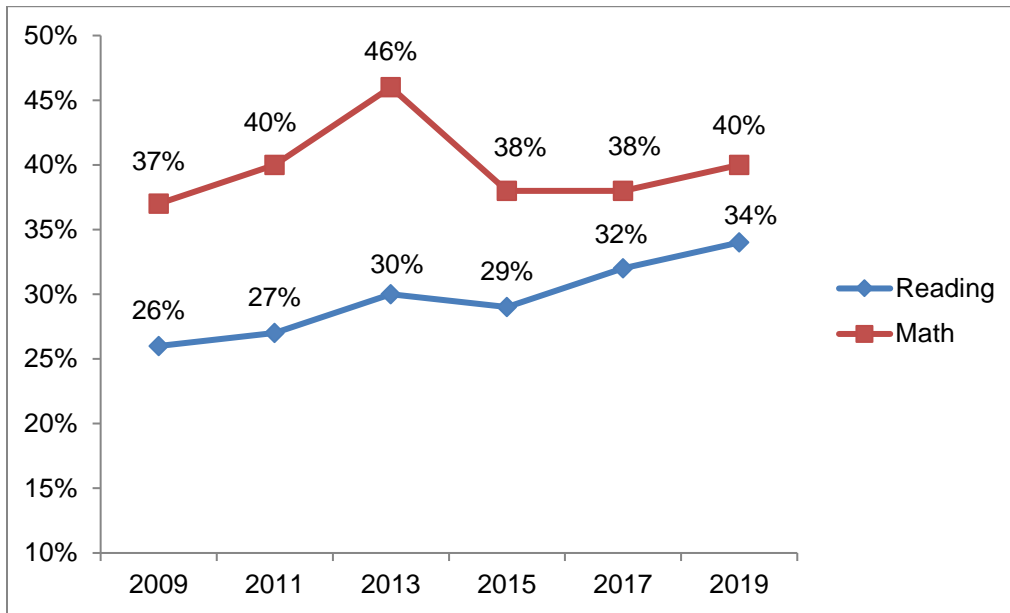
Table 18. National Assessment of Educational Progress (NAEP)

	2015		2017		2019	
NAEP Assessment	<i>(Percent Proficient & Advanced)</i>					
	<u>Hawaii</u>	<u>Nation</u>	<u>Hawaii</u>	<u>Nation</u>	<u>Hawaii</u>	<u>Nation</u>
Reading						
Grade 4	29%	35%	32%	36%	34%	34%
Grade 8	26%	33%	30%	36%	29%	32%
Mathematics						
Grade 4	38%	39%	38%	40%	40%	40%
Grade 8	30%	32%	27%	34%	28%	33%
Science						
Grade 4	30%	37%	--	--	--	--
Grade 8	23%	33%	--	--	--	--

Note: Data reported was the most current data available at the time of publication.

Source: Hawaii State Department of Education: Office of Strategy, Innovation and Performance; Assessment and Accountability Branch.

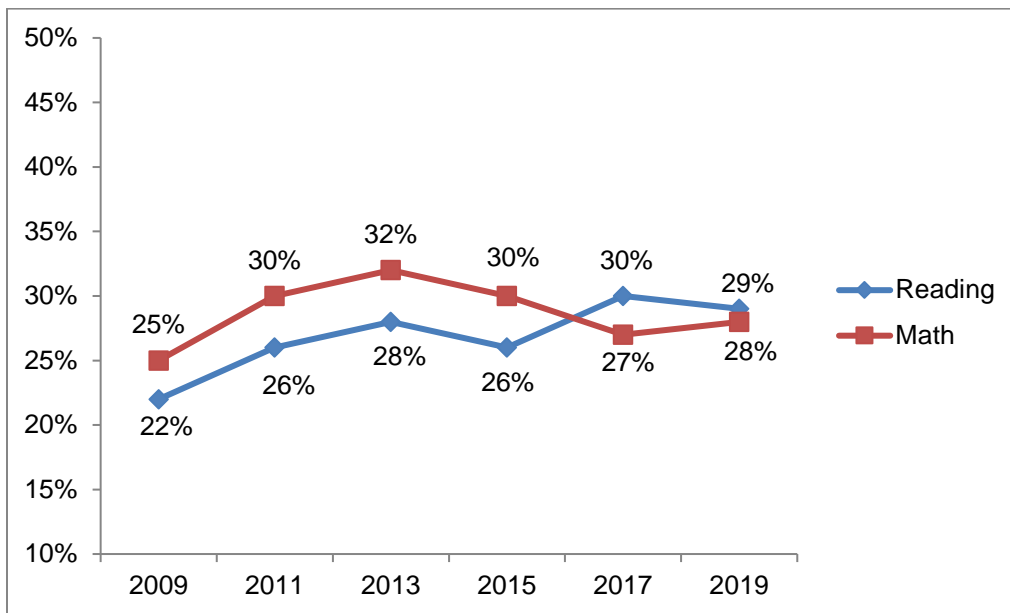
Figure 6. National Assessment of Educational Progress (NAEP), Percent Proficient & Advanced in Grade 4 Reading and Mathematics



Note: Data reported was the most current data available at the time of publication.

Source: Hawaii State Department of Education: Office of Strategy, Innovation and Performance; Assessment and Accountability Branch.

Figure 7. National Assessment of Educational Progress (NAEP), Percent Proficient & Advanced in Grade 8 Reading and Mathematics



Note: Data reported was the most current data available at the time of publication.

Source: Hawaii State Department of Education: Office of Strategy, Innovation and Performance; Assessment and Accountability Branch.

Table 19. Hawaii Statewide Assessment Program, Percent Meeting Standard

2015-16				2016-17			
Grade	All Schools	Department Schools Only	Charter Schools Only	Grade	All Schools	Department Schools Only	Charter Schools Only
English Language Arts/Literacy*				English Language Arts/Literacy*			
3	49.4%	49.6%	44.6%	3	48.4%	48.9%	38.7%
4	50.1%	50.7%	39.1%	4	48.4%	48.7%	42.7%
5	56.0%	56.5%	48.0%	5	53.1%	53.8%	43.6%
6	51.4%	51.7%	48.4%	6	49.3%	49.5%	47.3%
7	47.1%	47.1%	47.6%	7	49.6%	49.1%	56.1%
8	48.8%	48.6%	51.7%	8	47.1%	47.0%	48.3%
11	55.5%	55.4%	58.0%	11	56.9%	57.1%	53.3%
Mathematics*				Mathematics*			
3	53.3%	53.7%	46.6%	3	52.7%	53.3%	41.5%
4	47.0%	47.5%	38.0%	4	48.1%	48.5%	41.2%
5	42.4%	42.6%	38.3%	5	42.1%	42.6%	34.6%
6	39.4%	39.8%	33.8%	6	40.8%	41.1%	36.8%
7	37.0%	37.1%	35.6%	7	36.5%	36.4%	37.6%
8	37.6%	37.9%	34.2%	8	37.6%	38.1%	29.9%
11	30.3%	30.4%	28.3%	11	31.0%	31.4%	22.1%
Science**				Science**			
4	55.1%	56.0%	40.0%	4	56.8%	57.3%	46.3%
8	37.2%	37.4%	34.6%	8	42.0%	42.7%	33.1%
HS	33.1%	33.3%	29.2%	HS	35.9%	35.6%	43.6%
2017-18				2018-19			
Grade	All Schools	Department Schools Only	Charter Schools Only	Grade	All Schools	Department Schools Only	Charter Schools Only
English Language Arts/Literacy*				English Language Arts/Literacy*			
3	52.6%	53.0%	46.3%	3	52.3%	52.6%	48.5%
4	50.8%	51.3%	41.9%	4	51.5%	52.0%	44.0%
5	56.0%	56.2%	53.8%	5	56.7%	57.2%	49.5%
6	52.6%	52.6%	52.6%	6	52.4%	52.3%	54.0%
7	52.1%	52.0%	53.7%	7	52.8%	52.6%	56.1%
8	54.5%	54.3%	57.2%	8	51.5%	51.4%	53.2%
11	60.0%	60.1%	57.5%	11	58.7%	58.7%	60.1%
Mathematics*				Mathematics*			
3	54.2%	55.2%	39.0%	3	55.7%	56.4%	45.3%
4	47.3%	48.0%	35.4%	4	48.1%	49.0%	35.0%
5	42.9%	43.3%	36.4%	5	44.1%	44.8%	32.5%
6	41.4%	41.9%	34.7%	6	40.6%	41.1%	34.5%
7	37.1%	37.2%	36.5%	7	38.2%	38.5%	34.3%
8	38.6%	39.2%	29.8%	8	37.8%	38.4%	30.1%
11	32.0%	32.3%	23.9%	11	30.1%	30.2%	27.1%
Science**				Science**			
4	56.3%	56.9%	47.0%	4	56.7%	57.1%	50.7%
8	43.6%	43.8%	40.4%	8	40.7%	40.5%	44.5%
HS	34.6%	34.5%	38.3%	HS	34.7%	34.6%	36.2%

Note: *Achievement rates for English Language Arts/Literacy and Mathematics are based on **all students tested** who were administered either the SBA or HSA-Alt in that subject.

**Achievement rates for Science are based on all students tested who were administered either the HSA Science or HSA-Alt for grades 4 and 8, or the Biology I End-of-Course Exam or HSA-Alt in high school (HS). For school year 2018-19, results are based on a bridge test using NGSS.

Sources: Hawaii State Department of Education: Office of Strategy, Innovation and Performance; Data Governance and Analysis Branch.

Table 20. Students by Complex in SY2018-19

	Enrollment*	Economically Disadvantaged	Special Education	ELL	Graduated on-time
ALL SCHOOLS	179,698	85,760	17,591	16,275	85%
<i>Department Schools</i>	168,152	80,146	16,666	16,015	85%
HONOLULU: 2 Complex Areas / 6 Complexes					
Farrington	7,386	67%	8%	26%	72%
Kaiser	3,673	14%	8%	5%	94%
Kalani	4,443	19%	8%	10%	94%
Kaimuki	3,835	58%	12%	25%	69%
McKinley	4,308	66%	9%	30%	73%
Roosevelt	5,864	38%	8%	6%	89%
CENTRAL: 2 Complex Areas / 6 Complexes					
Aiea	3,696	49%	10%	10%	87%
Moanalua	5,075	29%	8%	6%	93%
Radford	5,652	29%	10%	5%	93%
Leilehua	7,354	53%	11%	7%	89%
Mililani	7,956	20%	9%	2%	93%
Waialua	1,413	46%	10%	5%	95%
LEEWARD: 3 Complex Areas / 6 Complexes					
Campbell	10,735	36%	8%	7%	85%
Kapolei	6,812	40%	10%	4%	90%
Pearl City	6,172	34%	9%	6%	89%
Waipahu	8,346	54%	8%	22%	84%
Nanakuli	2,196	85%	16%	6%	76%
Waianae	5,372	83%	15%	5%	83%
WINDWARD: 2 Complex Areas / 4 Complexes					
Castle	4,565	45%	14%	3%	87%
Kahuku	3,307	49%	11%	3%	89%
Kailua	2,604	50%	14%	4%	74%
Kalaheo	3,675	24%	10%	2%	88%
HAWAII: 3 Complex Areas / 9 Complexes					
Hilo	4,187	68%	14%	8%	86%
Waiakea	3,708	51%	9%	4%	90%
Kau	876	100%	10%	19%	81%
Keaau	3,073	91%	12%	9%	86%
Pahoa	1,441	100%	17%	6%	81%
Honokaa	1,703	65%	11%	8%	91%
Kealakehe	4,351	57%	9%	16%	76%
Kohala	776	61%	13%	7%	86%
Konawaena	3,245	64%	8%	13%	78%
MAUI: 2 Complex Areas / 7 Complexes					
Baldwin	4,359	45%	9%	8%	85%
Kekaulike	4,275	49%	11%	3%	86%
Maui	7,328	44%	8%	14%	81%
Hana	348	61%	14%	0%	81%
Lahainaluna	3,210	44%	8%	15%	77%
Lanai	560	34%	14%	15%	94%
Molokai	921	74%	15%	2%	89%
KAUAI: 1 Complex Area / 3 Complexes					
Kapaa	3,163	43%	10%	5%	96%
Kauai	3,807	42%	8%	8%	92%
Waimea	2,323	49%	9%	7%	84%
SPECIAL					
Hawaii School for Deaf & Blind	59	53%	100%	39%	n/a
Charter Schools	11,546	5,614	925	260	80%

Note: *Based on the Official Enrollment Count for Fall 2018.

Source: Hawaii State Department of Education: Office of Strategy, Innovation and Performance; Assessment and Accountability Branch.

Table 21. Teachers by Complex in SY2018-19

		Classroom Teachers (headcount)	Fully Licensed	5+ Years at same School	Advanced Degree	Average Years Teaching Experience
ALL SCHOOLS		11,475	10,923	6,489	4,355	13.3
Department Schools		11,172	10,620	6,367	4,206	13.4
HONOLULU			95%	57%	38%	
	Farrington	487	98%	64%	38%	14.9
	Kaiser	224	98%	55%	41%	13.0
	Kalani	267	98%	65%	49%	15.2
	Kaimuki	287	97%	67%	39%	16.3
	McKinley	281	98%	59%	41%	13.9
	Roosevelt	361	98%	61%	38%	15.4
CENTRAL						
	Aiea	251	93%	54%	35%	13.2
	Moanalua	306	98%	62%	43%	14.0
	Radford	382	96%	61%	36%	14.0
	Leilehua	516	92%	56%	41%	12.9
	Mililani	474	96%	64%	42%	15.2
	Waialua	96	96%	55%	46%	13.0
LEEWARD						
	Campbell	676	93%	52%	35%	11.6
	Kapolei	432	97%	50%	36%	12.3
	Pearl City	402	98%	64%	35%	15.4
	Waipahu	529	97%	67%	33%	14.9
	Nanakuli	157	97%	47%	39%	11.2
	Waianae	385	82%	54%	30%	11.1
WINDWARD						
	Castle	339	94%	55%	34%	14.4
	Kahuku	233	97%	60%	34%	13.9
	Kailua	213	95%	65%	37%	14.1
	Kalaheo	246	97%	46%	42%	12.8
HAWAII						
	Hilo	284	97%	60%	33%	14.9
	Waiakea	250	98%	63%	38%	15.2
	Kau	69	91%	39%	35%	9.0
	Keaau	202	96%	57%	37%	14.4
	Pahoa	108	96%	59%	43%	12.2
	Honokaa	117	93%	45%	33%	11.6
	Kealakehe	277	90%	43%	38%	10.8
	Kohala	62	94%	58%	44%	11.9
	Konawaena	213	86%	47%	34%	10.6
MAUI						
	Baldwin	288	95%	50%	39%	13.5
	Kekaulike	293	93%	49%	38%	12.1
	Maui	477	96%	53%	36%	12.2
	Hana	29	83%	66%	41%	12.4
	Lahainaluna	208	95%	54%	41%	10.9
	Lanai	41	90%	54%	29%	11.2
	Molokai	73	88%	66%	36%	14.6
KAUAI						
	Kapaa	200	98%	57%	36%	13.7
	Kauai	254	99%	57%	39%	13.2
	Waimea	167	95%	50%	38%	12.6
SPECIAL						
	Hawaii School for Deaf & Blind	16	69%	19%	81%	6.8
Charter Schools		303	303	122	149	9.5
			100%	40%	49%	

Source: Hawaii State Department of Education: Office of Strategy, Innovation and Performance; Assessment and Accountability Branch.

Table 22. SY2017-18 Wellness Indicators by Complex (results for participating schools)

	Number of Participating Schools	Percent of Participation	Schools with a Wellness Committee	All Food & Beverages Sold Met Compliance	Required Health Ed Classes Met Recommended Minutes	Required PE Classes Met Recommended Minutes	≥20 Minutes Recess Per Day	Average % of Wellness Guidelines Met
STATE OVERALL	253	99%	82%	36%	79%	81%	95%	81%
Farrington-Kaiser-Kalani	24	96%	83%	38%	75%	83%	96%	82%
Farrington	12	100%	92%	33%	92%	92%	100%	80%
Kaiser	6	100%	83%	17%	50%	83%	100%	83%
Kalani	6	86%	67%	67%	67%	67%	83%	86%
Kaimuki-McKinley-Roosevelt	28	100%	79%	46%	79%	96%	100%	81%
Kaimuki	10	100%	70%	60%	80%	100%	100%	81%
McKinley	8	100%	88%	50%	88%	100%	100%	86%
Roosevelt	10	100%	80%	30%	70%	90%	100%	77%
Aiea-Moanalua-Radford	22	100%	77%	41%	73%	73%	86%	76%
Aiea	7	100%	57%	57%	71%	71%	86%	75%
Moanalua	6	100%	83%	50%	100%	83%	100%	82%
Radford	9	100%	89%	22%	56%	67%	78%	74%
Leilehua-Mililani-Waiialua	20	100%	90%	25%	90%	90%	100%	83%
Leilehua	10	100%	90%	30%	80%	90%	100%	83%
Mililani	7	100%	86%	29%	100%	100%	100%	87%
Waiialua	3	100%	100%	0%	100%	67%	100%	77%
Campbell-Kapolei	17	100%	76%	12%	82%	76%	82%	77%
Campbell	10	100%	80%	20%	80%	70%	90%	78%
Kapolei	7	100%	71%	0%	86%	86%	71%	76%
Pearl City-Waipahu	17	100%	71%	71%	88%	88%	88%	81%
Pearl City	10	100%	90%	80%	90%	90%	100%	88%
Waipahu	7	100%	43%	57%	86%	86%	71%	72%
Nanakuli-Waianae	9	100%	67%	33%	78%	67%	100%	81%
Nanakuli	3	100%	100%	67%	100%	67%	100%	94%
Waianae	6	100%	50%	17%	67%	67%	100%	75%
Castle-Kahuku	16	100%	81%	38%	81%	88%	100%	84%
Castle	10	100%	80%	40%	80%	90%	100%	84%
Kahuku	6	100%	83%	33%	83%	83%	100%	83%
Kailua-Kalaheo	14	100%	100%	36%	86%	79%	93%	88%
Kailua	8	100%	100%	25%	75%	88%	88%	86%
Kalaheo	6	100%	100%	50%	100%	67%	100%	90%
Hilo-Waiakea	12	92%	92%	58%	75%	83%	92%	82%
Hilo	9	100%	89%	67%	78%	89%	100%	82%
Waiakea	3	75%	100%	33%	67%	67%	67%	81%
Kau-Keaau-Pahoa	8	89%	100%	38%	75%	75%	100%	87%
Kau	1	50%	100%	0%	100%	100%	100%	94%
Keaau	4	100%	100%	50%	100%	75%	100%	83%
Pahoa	3	100%	100%	33%	33%	67%	100%	89%
Honokaa-Kealakehe-Kohala-Konawaena	19	100%	74%	11%	68%	68%	100%	76%
Honokaa	4	100%	100%	0%	50%	50%	100%	74%
Kealakehe	6	100%	67%	33%	83%	83%	100%	80%
Kohala	3	100%	100%	0%	100%	100%	100%	84%
Konawaena	6	100%	50%	0%	50%	50%	100%	70%
Baldwin-Kekaulike-Maui	20	100%	95%	35%	95%	80%	95%	82%
Baldwin	5	100%	100%	20%	80%	80%	100%	86%
Kekaulike	7	100%	100%	14%	100%	86%	100%	78%
Maui	8	100%	88%	63%	100%	75%	88%	84%
Hana-Lahainaluna-Lanai-Molokai	11	100%	55%	36%	64%	64%	91%	74%
Hana	1	100%	100%	100%	100%	100%	100%	88%
Lahainaluna	4	100%	75%	50%	50%	75%	75%	78%
Lanai	1	100%	0%	0%	0%	0%	100%	65%
Molokai	5	100%	40%	20%	80%	60%	100%	69%
Kapaa-Kauai-Waimea	16	100%	94%	31%	69%	88%	94%	83%
Kapaa	5	100%	100%	20%	80%	80%	100%	85%
Kauai	5	100%	100%	40%	80%	100%	80%	86%
Waimea	6	100%	83%	33%	50%	83%	100%	79%

Note: Results reflect 253 of 256 eligible schools that completed the Survey.

Source: Hawaii State Department of Health. This data has not been updated from the prior year.

Table 23. Percent Meeting Standard on the Hawaii Statewide Assessment Program English Language Arts/Literacy Assessments by Grade and Complex for SY2018-19

District	Complex	3	4	5	6	7	8	11	All Tested Grades
ALL SCHOOLS		52%	52%	57%	52%	53%	52%	59%	54%
Department Schools		53%	52%	57%	52%	53%	51%	59%	54%
HONOLULU	Farrington	41%	39%	46%	38%	42%	42%	49%	42%
	Kaiser	67%	71%	72%	74%	72%	68%	75%	71%
	Kalani	76%	78%	74%	65%	68%	76%	72%	72%
	Kaimuki	49%	51%	55%	41%	43%	47%	50%	48%
	McKinley	36%	39%	47%	20%	30%	32%	67%	42%
	Roosevelt	78%	76%	75%	60%	55%	53%	71%	66%
CENTRAL	Aiea	54%	50%	54%	51%	60%	65%	59%	56%
	Moanalua	62%	63%	71%	61%	73%	83%	79%	72%
	Radford	61%	59%	71%	69%	64%	63%	63%	64%
	Leilehua	57%	55%	60%	59%	61%	55%	53%	58%
	Mililani	73%	67%	75%	68%	70%	72%	65%	70%
	Waialua	65%	72%	79%	73%	56%	62%	47%	65%
LEEWARD	Campbell	53%	50%	54%	52%	55%	52%	58%	53%
	Kapolei	55%	52%	56%	57%	54%	51%	59%	55%
	Pearl City	70%	70%	75%	73%	63%	58%	68%	68%
	Waipahu	43%	40%	50%	50%	46%	46%	57%	48%
	Nanakuli	23%	28%	15%	25%	34%	20%	37%	26%
	Waianae	22%	29%	35%	31%	32%	29%	15%	28%
WINDWARD	Castle	46%	56%	62%	51%	56%	55%	68%	56%
	Kahuku	65%	58%	53%	60%	62%	50%	55%	58%
	Kailua	59%	59%	61%	54%	36%	34%	61%	56%
	Kalaheo	56%	58%	74%	76%	74%	69%	74%	69%
HAWAII	Hilo	49%	49%	55%	48%	40%	49%	60%	50%
	Waiakea	47%	58%	54%	49%	55%	50%	68%	54%
	Kau	36%	20%	25%	32%	9%	16%	38%	24%
	Keaau	44%	32%	37%	38%	40%	39%	40%	39%
	Pahoa	34%	24%	45%	38%	34%	31%	54%	37%
	Honokaa	32%	37%	39%	44%	45%	36%	55%	40%
	Kealakehe	33%	38%	43%	37%	39%	38%	55%	40%
	Kohala	32%	43%	49%	55%	55%	39%	55%	47%
	Konawaena	40%	45%	55%	47%	60%	54%	57%	51%
MAUI	Baldwin	53%	43%	53%	43%	35%	52%	48%	47%
	Kekaulike	62%	57%	66%	40%	48%	40%	66%	55%
	Maui	55%	55%	61%	55%	54%	52%	60%	56%
	Hana	18%	16%	47%	31%	41%	35%	40%	31%
	Lahainaluna	44%	55%	51%	39%	47%	37%	40%	45%
	Lanai	51%	39%	38%	13%	22%	32%	64%	37%
	Molokai	29%	36%	39%	56%	26%	39%	38%	37%
KAUAI	Kapaa	45%	38%	51%	45%	43%	38%	50%	44%
	Kauai	58%	48%	61%	56%	55%	45%	57%	54%
	Waimea	46%	40%	48%	38%	39%	38%	45%	42%
SPECIAL									
Hawaii School for Deaf & Blind		n/a	n/a	n/a	n/a	n/a	n/a	n/a	n/a
Charter Schools		49%	44%	50%	54%	56%	53%	60%	52%

Note: Achievement rates are based on **all students** who were administered the SBA or HSA-Alt.

n/a = Data not reported to maintain student confidentiality (FERPA).

Sources: Hawaii State Department of Education: Office of Strategy, Innovation and Performance; Data Governance and Analysis Branch.

Table 24. Percent Meeting Standard on the Hawaii Statewide Assessment Program
Mathematics Assessments by Grade and Complex for SY2018-19

District	Complex	3	4	5	6	7	8	11	All Tested Grades
ALL SCHOOLS		56%	48%	44%	41%	38%	38%	30%	43%
Department Schools		56%	49%	45%	41%	39%	38%	30%	43%
HONOLULU	Farrington	46%	39%	36%	26%	33%	31%	20%	33%
	Kaiser	67%	67%	59%	62%	60%	60%	48%	61%
	Kalani	83%	74%	65%	66%	64%	69%	50%	67%
	Kaimuki	51%	55%	45%	34%	33%	43%	18%	41%
	McKinley	42%	39%	41%	11%	11%	19%	33%	33%
	Roosevelt	80%	75%	70%	47%	49%	43%	45%	58%
CENTRAL	Aiea	54%	50%	39%	46%	61%	66%	21%	49%
	Moanalua	65%	61%	50%	53%	57%	66%	38%	55%
	Radford	66%	53%	53%	61%	46%	35%	31%	51%
	Leilehua	59%	52%	48%	46%	45%	44%	30%	48%
	Mililani	72%	65%	62%	53%	52%	49%	39%	56%
	Waialua	83%	71%	66%	67%	41%	44%	16%	56%
LEEWARD	Campbell	57%	46%	41%	40%	41%	37%	21%	41%
	Kapolei	64%	49%	39%	43%	41%	32%	32%	43%
	Pearl City	76%	70%	69%	66%	53%	45%	47%	62%
	Waipahu	47%	40%	42%	45%	32%	32%	34%	39%
	Nanakuli	33%	30%	17%	31%	15%	5%	6%	20%
	Waianae	29%	30%	24%	23%	17%	18%	3%	21%
WINDWARD	Castle	48%	48%	42%	41%	38%	31%	34%	41%
	Kahuku	67%	59%	40%	51%	45%	36%	25%	48%
	Kailua	65%	57%	53%	40%	21%	18%	26%	45%
	Kalaheo	64%	50%	54%	60%	47%	66%	41%	55%
HAWAII	Hilo	56%	44%	45%	44%	35%	40%	31%	43%
	Waiakea	55%	52%	45%	36%	41%	43%	40%	44%
	Kau	33%	22%	15%	27%	4%	4%	7%	17%
	Keaau	45%	28%	25%	27%	20%	18%	27%	27%
	Pahoa	29%	22%	30%	25%	18%	26%	31%	26%
	Honokaa	37%	36%	31%	45%	28%	34%	16%	33%
	Kealakehe	36%	31%	33%	22%	20%	31%	26%	29%
	Kohala	41%	26%	22%	11%	10%	16%	33%	22%
Konawaena	39%	39%	45%	29%	35%	37%	29%	37%	
MAUI	Baldwin	57%	44%	41%	29%	18%	33%	20%	35%
	Kekaulike	59%	49%	46%	16%	28%	39%	28%	39%
	Maui	60%	49%	48%	35%	37%	39%	28%	44%
	Hana	21%	9%	37%	15%	35%	25%	5%	21%
	Lahainaluna	44%	42%	32%	26%	28%	25%	17%	31%
	Lanai	55%	21%	14%	5%	13%	9%	3%	18%
	Molokai	18%	14%	29%	33%	21%	20%	16%	22%
KAUAI	Kapaa	49%	37%	34%	31%	30%	25%	34%	34%
	Kauai	61%	44%	47%	43%	53%	35%	37%	46%
	Waimea	52%	46%	36%	23%	28%	25%	23%	34%
SPECIAL									
Hawaii School for Deaf & Blind		n/a	n/a	n/a	n/a	n/a	n/a	n/a	n/a
Charter Schools		45%	35%	33%	35%	34%	30%	27%	35%

Note: Achievement rates are based on **all students** who were administered the SBA or HSA-Alt.

n/a = Data not reported to maintain student confidentiality (FERPA).

Sources: Hawaii State Department of Education: Office of Strategy, Innovation and Performance; Data Governance and Analysis Branch.

Table 25. Percent Meets and Exceeds Proficiency on the Hawaii Statewide Assessment Program Science Assessments by Grade and Complex for SY2018-19

District	Complex	4	8	HS	All Tested Grades
ALL SCHOOLS		57%	41%	35%	44%
Department Schools		57%	41%	35%	44%
HONOLULU	Farrington	48%	29%	29%	34%
	Kaiser	76%	54%	38%	54%
	Kalani	78%	75%	50%	67%
	Kaimuki	59%	32%	10%	36%
	McKinley	37%	10%	22%	25%
	Roosevelt	80%	40%	44%	53%
CENTRAL	Aiea	52%	53%	27%	46%
	Moanalua	71%	75%	51%	64%
	Radford	62%	47%	37%	51%
	Leilehua	63%	51%	22%	48%
	Mililani	73%	67%	55%	64%
	Waialua	78%	44%	40%	53%
LEEWARD	Campbell	54%	40%	44%	45%
	Kapolei	58%	31%	36%	41%
	Pearl City	78%	44%	35%	53%
	Waipahu	42%	31%	37%	37%
	Nanakuli	36%	8%	8%	15%
	Waianae	44%	25%	24%	29%
WINDWARD	Castle	60%	38%	30%	43%
	Kahuku	71%	28%	32%	45%
	Kailua	61%	36%	46%	50%
	Kalaheo	69%	63%	64%	65%
HAWAII	Hilo	53%	50%	26%	43%
	Waiakea	66%	31%	44%	45%
	Kau	31%	10%	27%	21%
	Keaau	30%	27%	28%	28%
	Pahoa	35%	12%	13%	21%
	Honokaa	44%	16%	20%	28%
	Kealakehe	45%	23%	36%	34%
	Kohala	50%	25%	64%	44%
	Konawaena	45%	43%	33%	40%
MAUI	Baldwin	47%	23%	20%	30%
	Kekaulike	65%	53%	48%	56%
	Maui	52%	53%	34%	46%
	Hana	16%	19%	11%	16%
	Lahainaluna	53%	36%	21%	36%
	Lanai	26%	9%	n/a	16%
	Molokai	25%	18%	12%	17%
KAUAI	Kapaa	50%	29%	34%	38%
	Kauai	49%	32%	23%	34%
	Waimea	50%	26%	13%	26%
SPECIAL					
Hawaii School for Deaf & Blind		n/a	n/a	n/a	n/a
Charter Schools		51%	45%	36%	45%

Note: Achievement rates are based on **all students tested** who were administered the HSA Science (NGSS Bridge) or HSA-Alt for grades 4 and 8. The achievement rates for high school students are based on students who were administered either the Biology I End-of-Course Exam or the HSA-Alt for grade 11. n/a = Data not reported to maintain student confidentiality (FERPA).

Sources: Hawaii State Department of Education: Office of Strategy, Innovation and Performance; Data Governance and Analysis Branch.

Appendices

Appendix A. Glossary

This glossary explains the educational and fiscal terms and measures contained in the Data Book. An “n/a” indicates data are “not appropriate” or “not reportable.” A “--” indicates data are missing or unavailable. Due to rounding of percentages, there may be slight differences among published reports (for example, 9.6% may be reported as 10% for the same measure in different reports).

Administrators, School: This is a Full-Time Equivalent (FTE) count of all principals and vice-principals.

Administrators, State and Complex Area: This is an FTE count of the positions responsible for the administrative support of programs, curriculum, and state or federal legal requirements at the complex area and state levels. Examples of FTE positions include complex areas superintendents, evaluation specialists, facilities planners, personnel specialists, test development specialists, budget specialists, information (data) specialists, state and district curriculum/educational specialists, and safety/security program specialists.

Appropriated Funds: Funds determined by the state legislature and enacted by the governor to provide basic support for the Hawaii State Department of Education to operate a statewide school district. Appropriated Funds include Executive Budget Bill appropriations for the DOE and Public Charter Schools plus actual expenditures made by Department of Budget and Finance (B&F) for both DOE and Public Charter Schools employer’s share of the cost of the employees’ retirement system and health insurance costs and related debt service. Beginning in FY 2009-10, appropriations for DOE related retirement benefit payments, health premium payments, and debt service payments were transferred to B&F. These amounts have continued to be included in the Appropriated Funds on this report for comparability and to present the total cost of public education.

Attendance Rate: The percentage of the official student enrollment attending school every day during the school year. For example, 95% means that on any given day during the given school year, an average of 95% of the students are present in school.

Average Years Teaching Experience: This is a simple average of the number of years of approved teaching experience within the Hawaii Department of Education.

Charter Schools: Charter schools are public schools operated and managed by independent governing boards. They operate under a performance contract with the State Public Charter School Commission, the statewide charter school authorizer. The Commission approves quality applications for new charter schools, monitors the performance and legal compliance of existing charter schools, and is responsible to the Board of Education.

Classroom Teachers, FTE or Headcount: An FTE Classroom Teacher count is a position count of all teachers who are directly teaching students. Unlike FTE, “Headcount” is a simple count of the number of teachers who are directly teaching students. Thus, 1.5 FTE teachers may have a headcount of two (one 1.0 FTE and one 0.5 FTE) or three (three teachers in 0.5 FTE positions).

Community Eligibility Provision (CEP): Is a non-pricing meal service option for schools and school districts in low-income areas. CEP allows the nation’s highest poverty schools and districts to serve breakfast and lunch at no cost to all enrolled students without collecting household applications. For additional information visit the U.S. Department of Agriculture Food and Nutrition Service website: <https://www.fns.usda.gov/school-meals/community-eligibility-provision>

Complex: This is a smaller division within a Complex Area consisting of a high school and the middle/intermediate and elementary schools within its attendance boundary.

Complex Area: This is an administrative unit made up of two or more complexes.

Demographics, State: Figures reported by the U.S. Census Bureau for years other than decennial 10-year censuses are estimates and are updated periodically. Such estimates in this report are from the American Community Survey. For an explanation of terms, definitions, and criteria used for classification, please visit the U.S. government website for the census: www.census.gov.

Dropout Rate: This four-year dropout rate is the percentage of high school students who have not returned to school and have either officially exited as “drop-outs”, have school enrollment statuses that are undetermined, or have not graduated within four years.

Economically Disadvantaged: These are students whose families meet the income qualifications for the federal free/reduced-cost lunch program. This is an indicator of school-community poverty.

English Language Learners (ELL): Students certified as receiving English-as-a-second-language services.

Enrollment Count, Official: The official enrollment count of each school is reported to the state upon the yearly opening of school. A school’s enrollment may fluctuate over the course of the school year; thus, a school’s enrollment count taken mid-year may be different from its official enrollment count.

Federal Funds: Funds provided by the federal government for use by the state public school system through grants from various federal agencies, such as the U.S. Department of Education (ED), U.S. Department of Defense, and U.S. Department of Agriculture.

Five or More Years at Same School: Percentage of teachers who have taught at one school for five or more years. It is an indicator of school staffing stability. Schools with higher levels of stability are considered most successful in implementing and sustaining school improvement efforts.

Fully Licensed: Teachers who meet the requirements (e.g., earned at least a bachelor’s degree and completed an approved teacher training program) to be fully licensed by the Hawaii State Teachers Standards Board.

Full-Time Equivalent (FTE): These are position counts and are the sum of full- and part-time positions. Note that partial counts are possible. For example, one full-time (1.0 FTE) and one half-time (0.5 FTE) would count as 1.5 FTEs.

General Funds: The primary source of funding for the state public school system provided by the state through taxpayer revenues.

Graduation, Graduation Rate, Graduate On Time, Four-Year Graduation: Count or percentage of all high school students, including public charter school students, who had completed high school within four years of their 9th-grade entry date. Special Education students receiving certificates of completion and students taking more than four years to complete high school are not included. For more information on the Adjusted Cohort Graduation Rate methodology, see the ESSA Graduation Rate Guidance on the ED website: <https://www2.ed.gov/policy/elsec/leg/essa/essagraterateguidance.pdf>

Hawaii State Alternate (HSA-Alt) Assessment: The HSA-Alt in English Language Arts/Literacy, Mathematics and Science are administered to students to promote, improve access to, and measure the attainment of standards for students with significant cognitive disabilities.

Honors Recognition Certificates: Beginning with the Class of 2016, Honors Recognition Certificates will be awarded to students who meet the requirements for the Hawaii High School Diploma, attain a cumulative grade point average of 3.0 or above, and earn the required credits for Academic, CTE, or STEM Honors. Students are able to earn a certificate for each honors distinction. For more information on the graduation requirements and the Honors Recognition Certificate requirements visit the Hawaii Department of Education (HIDOE) website: <http://www.hawaiipublicschools.org/TeachingAndLearning/StudentLearning/GraduationRequirements/Pages/Requirements.aspx>

Kaipuni Assessment of Education Outcomes (KAEO): Assessments administered in the Hawaiian language to Hawaiian language immersion students in Language Arts, Mathematics, and Science.

National Assessment of Educational Progress (NAEP): These are norm-referenced tests in reading, mathematics, and science developed and administered by the ED to sampled groups of students in grades 4 and 8 in all states. The data from the NAEP include state results for demographic groups of students, but not for Complex Areas, schools, or individual students. The metrics that NAEP uses include average scale scores and the percentages of students achieving NAEP Advanced, NAEP Proficient, NAEP Basic, and NAEP Below Basic. Advanced and Proficient denote mastery of challenging subject matter, including success on some items that are above the grade level of the students being tested. NAEP defines Basic as denoting partial mastery of prerequisite knowledge and skills that are fundamental for proficient work at each grade assessed. Below Basic means performance below the grade level being tested. These achievement levels overlap with, but are not identical to, the proficiency levels of the Hawaii state assessments.

Not Suspended, Students: The number of students who are not suspended by the school and an indicator of appropriate student behavior at school.

Others: Percentage of high school completers who received a special education certificate of completion in lieu of a diploma and students who are still attending school and did not graduate in the four-year time frame. These students are not included in the “Dropout” count or in the “Graduation On-time” count.

Perceptions of Safety and Well-Being, Student and Teacher: Positive responses (“Completely Agree”, “Strongly Agree” and “Agree”) to a set of items on the Hawaii State Department of Education’s annual School Quality Survey (SQS) regarding school safety and well-being. The percentage of responses that are positive is reported.

Per-Pupil Expenditure: The numbers reported by the National Center of Education Statistics (NCES) may be used for state-to-state comparisons. Numbers are based on membership and can be expected to be smaller than per-pupil expenditures based on average daily attendance. Current expenditure for public elementary and secondary education in a state is divided by the student membership. Current expenditures are funds spent for the operation of local public schools and local education agencies, including such operating expenses as salaries for school personnel, student transportation, school books and materials, and energy costs, but excluding capital outlay and interest on school debt.

Private Schools: Privately-operated schools not under the direction of the Hawaii State Department of Education.

Retention Rates for Elementary: Percentage of students, excluding kindergartners, who are not promoted to the next grade level. A low retention rate is desired.

Retention Rates for Middle & Intermediate: Percentage of 8th grade students who are not promoted to 9th grade the following year. A low retention rate is desired.

Schools, Total: The total number is the sum of all public schools. All regular public schools, public charter schools, and special schools are in this count. The Community Schools for Adults are not included.

Section 504: Regulation requiring schools to provide a “free appropriate public education” (FAPE) to each qualified student with a disability who is in the school district’s jurisdiction regardless of the nature or severity of that disability.

Smarter Balanced Assessment (SBA): These tests of the Hawaii Statewide Assessment Program (HSAP) measure student achievement in English Language Arts, Mathematics, and Science based on Hawaii Department of Education content standards. The percentages shown are assessment results. “*Percent Meeting Standard*” is derived from test results that meet or exceed the achievement standard (i.e., achievement cut-score).

Special Education (SPED): This count and percentage contain all special education students listed on the official enrollment report as receiving special education services.

Special Funds: Funds generated through revenue sources other than state taxpayer revenues, such as cafeteria collections from students, adult education tuition/fees, summer school tuition, driver education fees, facility rental fees, and lost textbook penalty fees.

Special Needs, Multiple: Students identified and/or qualified as special needs under more than one of the following categories: economically disadvantaged as determined by receiving free/reduced-cost lunch, Section 504 classification, and certified as receiving special education or English Language Learner services.

State and Local Expenditures Supporting Public Education, Percent: This percentage is published in the annual ED National Center of Education Statistics (NCES) *Digest of Educational Statistics* publication. The percentage is calculated by dividing the states' "Total, all general expenditures per capita" by the states' "Elementary and secondary education expenditures per capita." The "Total, all general expenditures per capita" includes state and local government expenditures for education services, social services, and income maintenance, transportation, public safety, environment and housing, governmental administration, interest on general debt, and other general expenditures, including intergovernmental expenditure to the federal government, as reported by the state's NCES Common Core of Data Financial Survey.

Support Staff, Other: This is an FTE count that encompasses a wide range of positions that support schools. This category may include, but is not limited to, school assessment liaisons, athletic directors, registrars, state and district resource teachers, school psychologists, custodians, cafeteria workers, school secretaries, school security guards, educational assistants, occupational therapists, mental health assistants, behavioral specialists, and student service coordinators. Note that the assignment of positions to categories is based on ED National Center for Education Statistics Common Core of Data Non-Fiscal Survey requirements.

Trust Funds: Funds segregated for specific purposes, such as foundation grants and athletic gate receipts.

Wellness: Student wellness is affected by nutrition education, the food served in schools, and the amount of physical activity students engage in. The Department of Education also recognizes that when students' wellness needs are met, they attain higher achievement levels.

Appendix B. References and Resources

Educational and Accountability Reports

Accountability Data Center

This is a web portal for educational accountability information. It complements the many federally- and state-required accountability reports at the school, complex, Complex Area, and state levels that are available as static documents. Visit the HIDOE's ARCH (Accountability Resource Center-Hawaii) website: <http://arch.k12.hi.us>.

Enrollment

These reports have student enrollment figures by districts, state, and grade-level groups and are available on the HIDOE School Reports page:

<http://www.hawaiipublicschools.org/VisionForSuccess/SchoolDataAndReports/SchoolReports/Pages/home.aspx>

National Assessment of Educational Progress (NAEP)

The NAEP website has three sets of information of special interest to educators and the general public. A visitor to the website can access them by viewing the key words along the top margin. SAMPLE QUESTIONS provides the visitor with all of the released items since "state NAEP" began in 1990. ANALYZE DATA provides a tool by which an educator or a researcher can retrieve NAEP results by subjects, grades, and demographics. STATE PROFILES provides general results for all states. Anyone seeking help with accessing and using these data tools is welcome to contact NAEP State Coordinator Dewey Gottlieb, at dewey_gottlieb@hawaiiidoe.org or (808) 307-3636. The NAEP website (<https://www.nationsreportcard.gov/>) contains a large amount of additional information and links to other assessment-related web sites.

School Quality Survey (SQS)

The survey gathers school staff, student, and parent perceptions that are useful for school improvement and planning efforts. The SQS also provides information about parent involvement and parent and student satisfaction with their schools. SQS reports are available on the ARCH website: <http://arch.k12.hi.us>.

School Status and Improvement Report (SSIR)

Each SSIR has a description of the school and its setting, a summary of progress in implementing Hawaii Department of Education standards, and information on school resources and educational outcomes. SSIR reports are available on the ARCH website: <http://arch.k12.hi.us>.

Strive HI

The current school accountability and improvement system is designed to meet the needs of Hawaii's students, educators, and schools. It aligns and connects our key state education policies and initiatives to position students and educators for success. For more information, visit the ARCH website (<http://arch.k12.hi.us>) or the HIDOE Strive HI Performance System page (<http://www.hawaiipublicschools.org/VisionForSuccess/AdvancingEducation/StriveHIPerformanceSystem/Pages/home.aspx>).

Trend Report: Educational & Fiscal Accountability

This annual report contains three years of trend data on schools, school complexes, and the Hawaii State Department of Education at selected benchmark grade levels with performance indicators in areas relating to student achievement, safety and well-being, and civic responsibility. These reports are designed to present trend data information to the public in a concise format for each complex and school as well as for the state. Trend reports are available on the ARCH website: <http://arch.k12.hi.us>.

Financial Reports

Allocations by School Program

These annual reports contain dollar amounts allocated by Allocation Number, Program, or Organization and can be found on the HIDOE Budget page:

<http://www.hawaiipublicschools.org/ConnectWithUs/Organization/Budget/Pages/home.aspx>

Annual Financial Reports

This Annual Financial Report is prepared each year to inform interested persons of the total cost of public education in the State of Hawaii. The reports provide both Operating and Capital Improvement Project fund information that is useful in presenting our educational system's financing, expenditures, and per-pupil information. This report can be found on the HIDOE State Reports page:

<http://www.hawaiipublicschools.org/VisionForSuccess/SchoolDataAndReports/StateReports/Pages/home.aspx>

Audit

The annual report on the financial audit of the Hawaii State Department of Education forms an opinion on the fairness of the presentation of its financial statements to comply with requirements for state and local governments that receive federal financial assistance. This report can be found on the HIDOE State Reports page:

<http://www.hawaiipublicschools.org/VisionForSuccess/SchoolDataAndReports/StateReports/Pages/home.aspx>

Budget

These reports have fiscal information on budget restrictions, operating budget allocations (initial and supplemental), emergency appropriations, and biennium budgets and can be found on the HIDOE Budget page: <http://www.hawaiipublicschools.org/ConnectWithUs/Organization/Budget/Pages/home.aspx>

Special Education Reports

Annual Performance Report & State Performance Plan

These documents are the state's plans and reports in accordance with the Individuals with Disabilities Education Improvement Act of 2004. Included are evaluations of the state's efforts and plans for improving implementation. For more information, visit the HIDOE Special Education Performance Report page:

<http://www.hawaiipublicschools.org/VisionForSuccess/SchoolDataAndReports/StateReports/Pages/Special-Education-Performance-Report.aspx>

Due Process Hearings Findings

The findings of due process hearings are provided for public information. For more information, visit the HIDOE Special Education Performance Report page:

<http://www.hawaiipublicschools.org/VisionForSuccess/SchoolDataAndReports/StateReports/Pages/Special-Education-Performance-Report.aspx>

Other Resources

Center on the Family

This resource provides access to research reports, informational articles, videos, brochures, and other materials designed to support and strengthen families in Hawaii. The Center on the Family at the University of Hawaii-Manoa (UH-Manoa) also issues an annual report on a core set of indicators reflecting overall well-being of Hawaii families. For more information, visit the UH-Manoa Center on the Family website: <http://uhfamily.hawaii.edu>

Hawaii P-3

An initiative by Hawaii P-20 to increase children's social-emotional and cognitive development toward the end goal of reading at grade level by third grade. For more information, visit the Hawaii P-3 website: <http://p3hawaii.org/>

Hawaii P-20 Partnerships for Education

A statewide partnership led by the Good Beginnings Alliance, the Hawaii State Department of Education, and the University of Hawaii System to strengthen early childhood through post-secondary education so that all students achieve career and college success. Annual College and Career Readiness reports are available on its website. For more information, visit the Hawaii P-20 website: <http://www.p20hawaii.org/>

State Public Charter School Commission

The State Public Charter School Commission (SPCSC or Commission) is the statewide charter school authorizer whose mission is to authorize high-quality public charter schools throughout Hawaii. The Commission approves quality applications for new charter schools and monitors the performance and legal compliance of existing charter schools. Charter schools are public schools operated and managed by independent governing boards that are responsible for the schools' financial, organizational, and academic viability. Although they are funded on a "per-pupil" basis separately from Department of Education-operated schools, charter schools are open-enrollment public schools that serve all students and do not charge tuition. Annual reports are available on its website: <http://www.chartercommission.hawaii.gov>

Appendix C. Supplemental Data Tables

*Note: Unless otherwise specified, "public school" represents both department and charter schools.
Data tables are available online at <http://arch.k12.hi.us/state/databook/databook.html>*

- Table 1. Enrollment in Hawaii Public and Private Schools
- Table 2. Enrollment by Complex Area
- Table 3. Enrollment of Students with Special Needs
- Table 4. Special Needs Affecting Public School Students in Hawaii
- Table 5. Average Daily Attendance Rates by School Type
- Table 6. Four-Year Graduation and Dropout Rates
- Table 7. Ethnicity of Students and Teachers
- Table 8. Hawaii Statewide Assessment Program Results
- Table 9. Chapter 19 Suspensions Categorized by Type of Incident
- Table 10. Administrative Staff as a Proportion of Total Staff: Hawaii and Comparison States
- Table 11. Expenditure Per Pupil: Hawaii and Comparison States
- Table 12. Hawaii and States with Similar Financial Resources
- Table 13. Percent of State and Local Expenditures Supporting Public Education: Hawaii and Comparison States
- Table 14. Percent of State and Local Expenditures Supporting Public Education and Per-Pupil Expenditures: All States