

2011

DECEMBER
QUARTER

APPRENTICES & TRAINEES

Australian vocational
education & training
statistics



NCVER



Australian Government

Department of Industry, Innovation
Science, Research and Tertiary Education



NCVER

Australian vocational education and training statistics

Apprentices and trainees

December quarter

2011

Highlights

There were 449 000 apprentices and trainees in-training as at 31 December 2011, an increase of 2.5% from the previous year.

In the 12 months to 31 December 2011, compared with the previous year:

- commencements increased by 1.4%, to 318 400
- completions increased by 6.9%, to 180 000
- cancellations and withdrawals increased by 5.6%, to 138 600.

For seasonally adjusted data, comparing the December quarter 2011 with the September quarter 2011:

- commencements in trades occupations decreased by 1.3%
- commencements in non-trades occupations increased by 1.3%
- completions increased by 1.3%
- cancellations and withdrawals decreased by 1.1%
- in-training numbers increased slightly.



Australian Government

Department of Industry, Innovation
Science, Research and Tertiary Education

© Commonwealth of Australia, 2012



With the exception of the Commonwealth Coat of Arms, the Department's logo, any material protected by a trade mark and where otherwise noted all material presented in this document is provided under a Creative Commons Attribution 3.0 Australia <<http://creativecommons.org/licenses/by/3.0/au>> licence.

The details of the relevant licence conditions are available on the Creative Commons website (accessible using the links provided) as is the full legal code for the CC BY 3.0 AU licence <<http://creativecommons.org/licenses/by/3.0/legalcode>>.

The Creative Commons licence conditions do not apply to all logos, graphic design, artwork and photographs. Requests and enquiries concerning other reproduction and rights should be directed to the National Centre for Vocational Education Research (NCVER).

This document should be attributed as NCVER 2012, *Australian vocational education and training statistics: apprentices and trainees 2011—December quarter*, NCVER, Adelaide.

This work has been produced by NCVER on behalf of the Australian Government, and state and territory governments, with funding provided through the Department of Industry, Innovation, Science, Research and Tertiary Education.

The views and opinions expressed in this document are those of NCVER and do not necessarily reflect the views of the Australian Government or state and territory governments.

ISSN 1440-0359

TD/TNC 108.09

Comments and suggestions regarding this publication are welcomed and should be forwarded to NCVER.

Published by NCVER

ABN 87 007 967 311

Level 11, 33 King William Street, Adelaide SA 5000

PO Box 8288, Station Arcade, Adelaide SA 5000, Australia

Phone: (08) 8230 8400

Fax: (08) 8212 3436

Web: <<http://www.ncver.edu.au>>

Email: <ats_req@ncver.edu.au>

Contents

Apprentice and trainee directions	4
Introduction	4
Overall trends	4
Seasonally adjusted data	4
Tables	6
Terms	18
Technical notes	19
Data source	19
Estimation procedure	19
Seasonal adjustments	19
Notes on figures and tables	20

Tables

Quarterly training activity	6
1 In-training by state/territory and selected training characteristics, as at 31 December 2011 ('000)	6
2 In-training by state/territory as at the end of each quarter, 2006–11 ('000)	6
3 Commencements by state/territory and selected training characteristics, December quarter 2011 ('000)	7
4 Commencements in each quarter by state/territory, 2006–11 ('000)	7
5 Completions by state/territory and selected training characteristics, December quarter 2011 ('000)	8
6 Completions in each quarter by state/territory, 2006–11 ('000)	8
7 Cancellations and withdrawals by state/territory and selected training characteristics, December quarter 2011 ('000)	9
8 Cancellations and withdrawals in each quarter by state/territory, 2006–11 ('000)	9
9 In-training as at the end of each quarter by selected training characteristics, Australia, 2006–11 ('000)	10
10 Commencements in each quarter by selected training characteristics, Australia, 2006–11 ('000)	10
11 Completions in each quarter by selected training characteristics, Australia, 2006–11 ('000)	12
12 Cancellations and withdrawals in each quarter by selected training characteristics, Australia, 2006–11 ('000)	12
13 In-training in top 20 training packages by state/territory, as at 31 December 2011 ('000)	14
14 Commencements in top 20 training packages by state/territory, December quarter 2011 ('000)	14
Training activity: 12-month ending series	15
15 Commencements by selected training characteristics, 12 months ending 31 December, Australia, 2006–11 ('000)	15
16 Completions by selected training characteristics, 12 months ending 31 December, Australia, 2006–11 ('000)	15
17 Commencements by occupation and state/territory, 12 months ending 31 December 2011 ('000)	16
18 Commencements by industry skills councils, 12 months ending 31 December 2011, Australia ('000)	17
Seasonally adjusted commencements	17
19 Seasonally adjusted commencements in each quarter, by state/territory, 2006–11 ('000)	17

Figures

1 In-training, seasonally adjusted, 2001–11 ('000)	5
2 Commencements, completions and cancellations/withdrawals, seasonally adjusted, 2001–11 ('000)	5
3 Trades and non-trades commencements, seasonally adjusted, 2001–11 ('000)	5

Apprentice and trainee directions

Introduction

This publication presents estimates of apprentice and trainee activity in Australia for the December quarter 2011. The figures in this publication are derived from the National Apprentice and Trainee Collection no.71 (March 2012 estimates).

The most recent figures in this publication are estimated (those for training activity from the June quarter 2010 to the December quarter 2011). Estimates take into account reporting lags that occur at the time of data collection. Consequently, the figures in this publication may differ from those published in earlier or later reports.

Estimated data are presented in this publication on a seasonally adjusted, quarterly and 12-month ending series basis. The 12-month ending series is particularly useful in showing longer-term data trends, but is less useful in identifying turning points.

The seasonally adjusted data involve the use of a mathematical model to smooth out fluctuations due to seasonal influences. Seasonally adjusted data are useful to illustrate trends from one quarter to the next, but cannot be further disaggregated.

Further details on the estimation methodology and seasonally adjusted data tables can be found at <http://www.ncver.edu.au/publications/2499.html>.

Overall trends

In-training

The number of apprentices and trainees in-training as at 31 December 2011 was 449 000, an increase of 2.5% from one year earlier.

For the 12 months ending 31 December 2011

Commencements

The number of commencements in the 12 months ending 31 December 2011 was 318 400, an increase of 1.4% from one year earlier.

Of this:

- trades commencements decreased by 5.9%
- non-trades commencements increased by 4.5%.

State and territory commencements in the 12 months to 31 December 2011, compared with the previous year, showed:

- | | |
|---------------------------|--|
| ■ New South Wales (-6.5%) | ■ Western Australia (-0.1%) |
| ■ Victoria (+12.8%) | ■ Tasmania (-5.5%) |
| ■ Queensland (+0.0%) | ■ Northern Territory (-2.8%) |
| ■ South Australia (+0.4%) | ■ Australian Capital Territory (+0.3%) |

Completions

The number of completions in the 12 months ending 31 December 2011 was 180 000, an increase of 6.9% from one year earlier.

Cancellations and withdrawals

The number of cancellations and withdrawals in the 12 months ending 31 December 2011 was 138 600, an increase of 5.6% from one year earlier.

Seasonally adjusted data

In-training

The number of apprentices and trainees in-training has increased in every quarter since September 2009. The number in-training increased by 0.1% between 30 September 2011 and 31 December 2011, from 460 400 to 460 900.

Commencements

The number of trades commencements has decreased in every quarter since June 2010. Between the September quarter 2011 and the December quarter 2011, trades commencements decreased by 1.3%.

The number of non-trades commencements has increased slightly between the September quarter 2011 and the December quarter 2011, from 57 200 to 58 000.

Completions

The number of completions has steadily increased for a number of quarters. Between the September quarter 2011 and the December quarter 2011, completions increased by 1.3%.

Cancellations and withdrawals

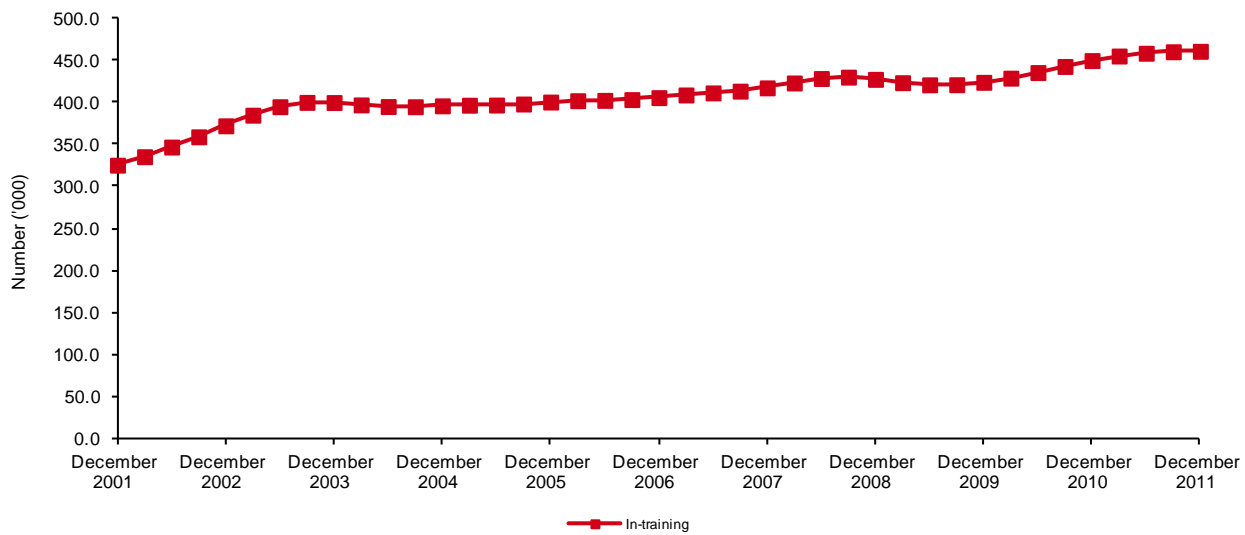
The number of cancellations and withdrawals has decreased 1.1% between the September quarter 2011 and the December quarter 2011.

For more information on seasonally adjusted data, see the technical notes on page 19.

Additional seasonally adjusted data tables are available at <http://www.ncver.edu.au/publications/2499.html>.

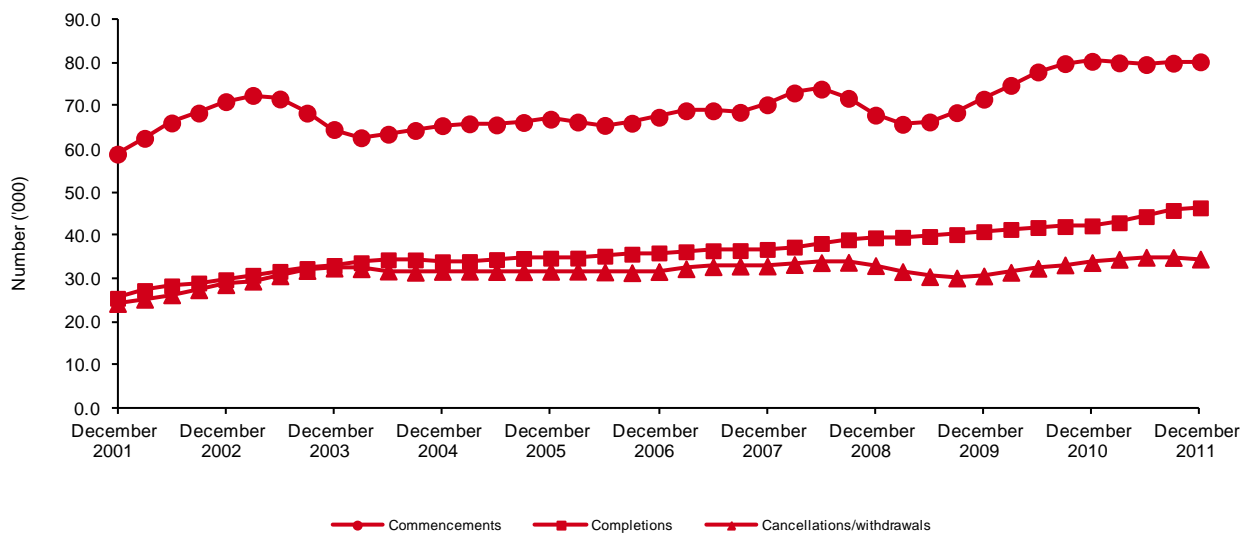
For more information on concepts and definitions used in this publication, see **Terms** listed on page 18.

Figure 1 In-training, seasonally adjusted,¹ 2001–11 ('000)



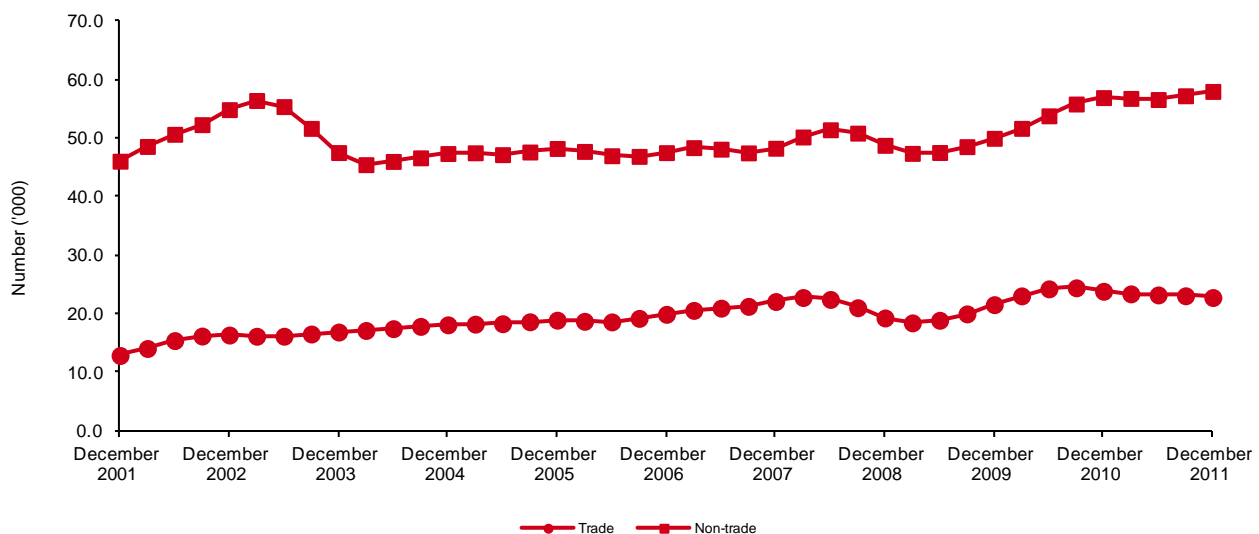
For notes on figures and tables, see page 20.

Figure 2 Commencements, completions and cancellations/withdrawals,² seasonally adjusted,¹ 2001–11 ('000)



For notes on figures and tables, see page 20.

Figure 3 Trades and non-trades^{3,4} commencements, seasonally adjusted,¹ 2001–11 ('000)



For notes on figures and tables, see page 20.

Tables

Quarterly training activity

Table 1 In-training by state/territory and selected training characteristics, as at 31 December 2011 ('000)

		NSW	Vic.	Qld	SA	WA	Tas.	NT	ACT	Australia
Age	19 years and under	32.3	30.0	28.8	8.5	13.1	3.1	1.0	1.9	118.8
	20 to 24 years	38.3	33.7	20.8	8.8	9.4	2.8	1.1	2.9	117.9
	25 to 44 years	48.0	37.1	29.5	12.4	11.6	4.1	1.5	2.8	147.0
	45 years and over	23.6	17.1	11.5	5.7	4.3	1.7	0.4	1.0	65.3
Sex	Male	88.4	76.3	58.5	23.7	27.8	7.4	2.7	5.0	289.7
	Female	53.8	41.6	32.1	11.7	10.6	4.3	1.4	3.6	159.2
Occupation (ANZSCO) group	Managers and professionals	8.2	10.1	9.2	3.6	1.4	1.0	0.2	1.1	34.7
	Technicians and trades workers	57.5	52.1	43.8	14.5	22.0	5.1	2.1	3.4	200.5
	Community and personal service workers	18.6	13.2	7.8	2.2	3.7	1.4	0.5	1.8	49.1
	Clerical and administrative workers	24.5	14.9	13.2	5.9	3.2	1.7	0.5	1.0	65.0
	Sales workers	14.3	13.0	7.9	4.2	2.0	1.2	0.3	0.6	43.4
	Machinery operators and drivers	11.9	4.9	4.7	3.0	3.4	0.6	0.2	0.3	29.0
	Labourers	7.3	9.8	4.0	2.1	2.8	0.7	0.2	0.4	27.3
AQF qualification level	Certificate I or II	6.0	3.3	5.1	2.6	2.6	0.7	0.5	0.4	21.2
	Certificate III	97.8	87.2	61.7	23.7	29.0	8.0	3.1	5.8	316.3
	Certificate IV	30.8	16.8	15.2	6.1	5.3	1.7	0.4	1.4	77.6
	Diploma/advanced diploma	7.6	10.6	8.7	3.1	1.5	1.3	0.1	1.0	33.9
Full-time status	Full-time	109.6	88.0	65.3	27.2	33.6	9.0	3.4	6.0	342.1
	Part-time	32.6	29.9	25.3	8.2	4.8	2.8	0.7	2.6	106.9
Total⁵		142.2	117.9	90.6	35.4	38.4	11.7	4.0	8.6	449.0

For notes on figures and tables, see page 20.

Table 2 In-training by state/territory as at the end of each quarter, 2006–11 ('000)

Quarter	NSW	Vic.	Qld	SA	WA	Tas.	NT	ACT	Australia
December 2006	124.0	105.1	80.9	32.6	31.7	12.3	3.0	6.2	395.8
March 2007	129.2	107.6	87.8	32.3	33.9	12.8	3.3	6.9	413.7
June 2007	128.5	107.4	89.7	31.4	34.3	12.8	3.3	6.7	414.1
September 2007	130.6	106.9	91.4	31.6	34.7	13.0	3.3	6.7	418.2
December 2007	130.3	100.9	87.2	30.1	34.0	12.7	3.2	6.2	404.5
March 2008	136.7	105.6	93.2	31.4	36.2	13.3	3.6	6.9	426.8
June 2008	139.2	107.2	95.1	32.0	36.7	13.4	3.7	6.8	434.1
September 2008	140.5	107.3	94.2	32.1	36.9	13.1	3.8	6.7	434.5
December 2008	137.1	102.4	87.5	31.1	35.8	12.2	3.5	5.9	415.4
March 2009	140.5	104.8	90.6	31.6	37.3	12.4	3.8	6.6	427.6
June 2009	139.1	104.7	89.5	32.0	36.8	12.2	3.9	6.7	424.7
September 2009	138.9	104.9	89.8	31.8	36.3	12.0	4.0	6.9	424.6
December 2009	138.1	100.8	85.7	30.4	35.3	11.3	3.8	6.4	411.7
March 2010	144.4	105.6	91.4	32.4	37.1	12.0	4.2	7.1	434.3
June 2010	144.8	107.4	92.6	32.9	37.5	12.1	4.3	7.2	438.8
September 2010	147.2	110.6	94.2	33.2	37.4	12.3	4.4	7.4	446.7
December 2010	146.3	107.8	90.5	33.0	37.4	11.8	4.1	7.2	438.0
March 2011	150.5	115.4	94.6	34.6	39.3	12.4	4.6	8.0	459.5
June 2011	148.1	120.0	95.9	35.3	39.5	12.5	4.6	8.0	463.8
September 2011	146.9	121.2	95.6	35.4	38.8	12.4	4.5	8.5	463.3
December 2011	142.2	117.9	90.6	35.4	38.4	11.7	4.0	8.6	449.0

For notes on figures and tables, see page 20.

Table 3 Commencements by state/territory and selected training characteristics, December quarter 2011 ('000)

		NSW	Vic.	Qld	SA	WA	Tas.	NT	ACT	Australia
Age	19 years and under	5.9	7.2	5.0	1.4	2.3	0.5	0.1	0.2	22.6
	20 to 24 years	3.7	3.5	2.1	0.9	1.2	0.3	0.1	0.2	12.0
	25 to 44 years	7.1	7.4	4.5	2.1	2.3	0.7	0.2	0.3	24.7
	45 years and over	3.3	3.7	1.8	0.9	0.8	0.3	0.0	0.1	10.9
Sex	Male	11.0	11.6	7.2	3.3	4.1	0.9	0.2	0.4	38.6
	Female	9.1	10.2	6.2	2.0	2.5	0.9	0.2	0.5	31.6
Occupation (ANZSCO) group	Managers and professionals	2.2	2.7	2.0	0.7	0.6	0.2	0.0	0.2	8.6
	Technicians and trades workers	4.8	4.6	3.9	1.2	2.3	0.3	0.2	0.2	17.6
	Community and personal service workers	3.2	3.4	2.0	0.4	0.8	0.3	0.1	0.3	10.5
	Clerical and administrative workers	3.9	3.2	2.5	0.9	0.9	0.3	0.1	0.1	11.9
	Sales workers	2.5	4.0	1.5	0.9	0.5	0.3	0.1	0.1	9.8
	Machinery operators and drivers	1.9	0.9	0.7	0.5	0.7	0.1	0.0	0.0	4.8
	Labourers	1.5	2.9	0.9	0.7	0.7	0.2	0.0	0.1	7.0
AQF qualification level	Certificate I or II	1.2	0.8	0.9	0.4	0.7	0.2	0.1	0.0	4.2
	Certificate III	12.5	14.9	8.1	3.6	4.1	1.0	0.3	0.5	45.0
	Certificate IV	4.2	3.3	2.5	0.7	1.1	0.3	0.0	0.2	12.4
	Diploma/advanced diploma	2.2	2.8	1.9	0.6	0.6	0.3	0.0	0.2	8.7
Full-time status	Full-time	13.9	13.8	8.9	3.7	5.3	1.2	0.3	0.6	47.7
	Part-time	6.1	8.0	4.5	1.5	1.3	0.6	0.1	0.3	22.6
Existing worker	Existing worker	6.4	9.3	5.4	3.0	2.1	0.8	0.1	0.3	27.5
	Newly commencing worker	13.6	12.5	8.0	2.3	4.5	0.9	0.3	0.6	42.7
Total⁵		20.0	21.8	13.4	5.3	6.6	1.7	0.4	0.9	70.3

For notes on figures and tables, see page 20.

Table 4 Commencements in each quarter by state/territory, 2006–11 ('000)

Quarter	NSW	Vic.	Qld	SA	WA	Tas.	NT	ACT	Australia
December 2006	17.6	16.0	12.1	4.6	4.9	1.8	0.4	1.1	58.5
March 2007	27.1	21.7	19.7	6.5	7.4	2.4	0.8	1.7	87.4
June 2007	17.1	17.6	15.6	4.8	5.2	1.9	0.5	1.0	63.7
September 2007	19.6	17.7	15.1	5.3	5.4	1.9	0.6	1.2	66.8
December 2007	18.3	14.7	12.5	4.1	5.1	1.8	0.5	0.9	57.9
March 2008	28.8	22.4	19.8	7.0	7.8	2.7	0.9	1.8	91.1
June 2008	22.3	18.6	17.2	5.4	6.0	2.1	0.7	1.1	73.3
September 2008	20.8	18.1	13.5	5.0	5.7	1.8	0.6	1.0	66.6
December 2008	18.2	16.0	10.6	4.6	5.4	1.7	0.4	0.8	57.7
March 2009	27.1	20.6	16.9	6.0	7.0	2.2	0.8	1.8	82.3
June 2009	18.4	17.2	12.9	5.2	5.3	1.7	0.6	1.1	62.5
September 2009	19.7	17.9	13.6	4.8	5.3	1.7	0.7	1.2	64.9
December 2009	20.2	16.8	12.4	4.2	5.4	1.4	0.6	0.9	61.8
March 2010	29.9	23.8	19.1	7.7	8.1	2.6	0.9	1.7	93.9
June 2010	21.6	19.9	15.5	5.5	6.2	1.9	0.6	1.1	72.3
September 2010	23.3	22.0	15.9	5.3	6.3	2.1	0.7	1.2	76.7
December 2010	22.0	19.9	14.0	5.4	6.7	1.9	0.5	0.9	71.3
March 2011	29.3	27.5	18.8	7.2	8.1	2.2	1.1	1.8	96.0
June 2011	19.4	24.7	16.2	5.7	6.4	1.9	0.6	1.0	76.0
September 2011	21.8	22.5	16.1	5.7	6.3	2.1	0.5	1.2	76.3
December 2011	20.0	21.8	13.4	5.3	6.6	1.7	0.4	0.9	70.3

For notes on figures and tables, see page 20.

Table 5 Completions by state/territory and selected training characteristics, December quarter 2011 ('000)

		NSW	Vic.	Qld	SA	WA	Tas.	NT	ACT	Australia
Age	19 years and under	2.1	5.4	3.6	0.6	1.0	0.3	0.1	0.1	13.2
	20 to 24 years	4.2	3.7	3.0	0.9	1.4	0.6	0.2	0.1	14.0
	25 to 44 years	5.1	4.4	3.6	0.9	1.4	0.6	0.2	0.1	16.3
	45 years and over	3.2	2.5	1.7	0.5	0.6	0.2	0.0	0.0	8.8
Sex	Male	8.1	8.2	7.0	1.7	2.6	0.9	0.3	0.2	29.0
	Female	6.4	7.8	5.0	1.2	1.8	0.8	0.2	0.1	23.3
Occupation (ANZSCO) group	Managers and professionals	0.4	1.1	0.9	0.2	0.2	0.2	0.0	0.0	3.0
	Technicians and trades workers	4.5	3.1	4.0	1.0	1.6	0.5	0.2	0.1	15.1
	Community and personal service workers	2.1	4.1	1.7	0.3	0.7	0.3	0.1	0.1	9.3
	Clerical and administrative workers	3.6	2.4	2.4	0.6	0.7	0.2	0.1	0.0	10.0
	Sales workers	1.6	3.1	1.4	0.4	0.4	0.3	0.0	0.0	7.2
	Machinery operators and drivers	1.4	0.9	0.8	0.2	0.3	0.1	0.0	0.0	3.6
	Labourers	1.0	1.4	0.8	0.3	0.4	0.1	0.1	0.0	4.1
AQF qualification level	Certificate I or II	1.4	1.4	1.5	0.3	0.7	0.2	0.1	0.1	5.8
	Certificate III	9.6	10.8	7.7	2.0	2.8	1.1	0.3	0.2	34.5
	Certificate IV	3.2	2.7	2.1	0.5	0.6	0.2	0.1	0.0	9.4
	Diploma/advanced diploma	0.3	1.1	0.7	0.2	0.2	0.2	0.0	0.0	2.6
Actual duration of training	Two years or less	11.3	13.7	9.1	2.0	3.2	1.2	0.3	0.2	41.1
	More than two years	3.2	2.3	2.9	0.9	1.1	0.5	0.2	0.1	11.2
Full-time status	Full-time	11.2	8.3	8.1	2.3	3.6	1.2	0.4	0.2	35.3
	Part-time	3.3	7.7	4.0	0.6	0.7	0.5	0.1	0.1	17.0
Total⁵		14.5	16.0	12.0	2.9	4.4	1.7	0.5	0.3	52.3

For notes on figures and tables, see page 20.

Table 6 Completions in each quarter by state/territory, 2006–11 ('000)

Quarter	NSW	Vic.	Qld	SA	WA	Tas.	NT	ACT	Australia
December 2006	9.6	12.1	9.4	2.5	3.0	1.2	0.3	0.8	38.9
March 2007	13.0	10.4	7.0	4.2	2.8	1.1	0.3	0.6	39.2
June 2007	9.4	9.6	7.7	3.1	2.3	1.1	0.2	0.5	33.9
September 2007	9.4	9.9	7.0	2.6	2.7	1.1	0.3	0.6	33.5
December 2007	9.6	12.1	9.9	3.2	3.2	1.4	0.3	0.8	40.5
March 2008	13.4	9.7	7.4	3.2	3.1	1.3	0.2	0.5	38.9
June 2008	10.7	9.3	8.7	2.5	2.7	1.3	0.2	0.5	36.0
September 2008	10.5	9.5	7.9	2.5	3.0	1.3	0.2	0.6	35.5
December 2008	11.9	12.1	10.4	3.3	3.8	1.7	0.4	0.9	44.6
March 2009	14.4	10.1	7.9	3.0	3.3	1.3	0.2	0.5	40.6
June 2009	10.8	9.6	8.3	2.6	3.5	1.2	0.2	0.6	36.9
September 2009	11.2	10.1	7.9	2.7	3.6	1.2	0.3	0.5	37.5
December 2009	12.4	12.7	10.4	3.2	4.2	1.4	0.4	0.8	45.5
March 2010	14.7	11.0	7.8	3.2	4.2	1.2	0.3	0.5	42.8
June 2010	11.7	10.1	8.3	2.8	3.6	1.1	0.3	0.5	38.4
September 2010	11.7	10.4	8.8	2.7	4.0	1.2	0.3	0.4	39.7
December 2010	12.9	13.5	11.3	3.3	4.2	1.5	0.4	0.5	47.6
March 2011	15.1	10.9	8.6	3.3	3.6	1.0	0.3	0.4	43.2
June 2011	12.3	11.2	8.9	2.7	3.6	1.1	0.3	0.5	40.6
September 2011	12.8	12.1	10.0	3.0	4.1	1.4	0.3	0.2	43.9
December 2011	14.5	16.0	12.0	2.9	4.4	1.7	0.5	0.3	52.3

For notes on figures and tables, see page 20.

Table 7 Cancellations and withdrawals² by state/territory and selected training characteristics, December quarter 2011 ('000)

		NSW	Vic.	Qld	SA	WA	Tas.	NT	ACT	Australia
Age	19 years and under	3.5	3.3	3.0	0.7	1.2	0.3	0.1	0.2	12.4
	20 to 24 years	3.1	2.6	1.7	0.4	0.7	0.2	0.1	0.1	9.0
	25 to 44 years	3.1	2.6	1.8	0.7	0.8	0.2	0.1	0.1	9.4
	45 years and over	1.0	1.0	0.5	0.2	0.3	0.1	0.0	0.0	3.1
Sex	Male	6.6	5.6	4.4	1.3	1.9	0.4	0.3	0.3	20.9
	Female	4.0	3.8	2.6	0.6	1.1	0.4	0.2	0.2	13.0
Occupation (ANZSCO) group	Managers and professionals	0.4	0.6	0.5	0.1	0.1	0.0	0.0	0.1	1.8
	Technicians and trades workers	4.4	3.7	3.5	0.7	1.4	0.3	0.2	0.3	14.4
	Community and personal service workers	1.5	1.4	0.7	0.1	0.4	0.1	0.1	0.1	4.5
	Clerical and administrative workers	1.8	1.3	0.8	0.3	0.3	0.1	0.1	0.0	4.7
	Sales workers	1.2	1.3	0.8	0.3	0.3	0.1	0.0	0.1	4.0
	Machinery operators and drivers	0.7	0.3	0.3	0.3	0.2	0.0	0.0	0.0	1.9
	Labourers	0.7	0.8	0.5	0.1	0.3	0.1	0.0	0.0	2.6
AQF qualification level	Certificate I or II	0.9	0.6	0.7	0.3	0.4	0.1	0.1	0.0	3.0
	Certificate III	7.6	7.0	5.1	1.5	2.2	0.5	0.3	0.4	24.7
	Certificate IV	1.8	1.2	0.8	0.2	0.3	0.1	0.0	0.1	4.4
	Diploma/advanced diploma	0.4	0.7	0.4	0.1	0.1	0.1	0.0	0.1	1.7
Duration until cancelled/withdrawn	Two years or less	10.1	9.0	6.5	1.8	2.9	0.7	0.4	0.5	31.9
	More than two years	0.5	0.5	0.6	0.2	0.1	0.1	0.1	0.0	2.0
Full-time status	Full-time	7.9	6.4	4.9	1.2	2.4	0.6	0.3	0.4	24.1
	Part-time	2.7	3.1	2.1	0.8	0.6	0.2	0.1	0.2	9.8
Total⁵		10.6	9.5	7.0	2.0	3.0	0.8	0.4	0.6	33.9

For notes on figures and tables, see page 20.

Table 8 Cancellations and withdrawals² in each quarter by state/territory, 2006–11 ('000)

Quarter	NSW	Vic.	Qld	SA	WA	Tas.	NT	ACT	Australia
December 2006	9.3	9.0	6.9	2.0	2.4	0.8	0.4	0.8	31.5
March 2007	10.6	9.5	7.2	2.0	2.5	0.8	0.4	0.8	33.7
June 2007	9.8	8.6	7.1	1.9	2.4	0.9	0.4	0.8	31.9
September 2007	9.8	8.9	7.6	1.9	2.5	0.8	0.4	0.8	32.7
December 2007	10.2	8.8	8.0	2.0	2.6	0.9	0.4	0.8	33.6
March 2008	10.4	8.7	7.8	2.0	2.6	0.9	0.4	0.7	33.4
June 2008	10.4	8.1	7.9	1.8	2.9	0.8	0.4	0.7	33.0
September 2008	10.6	9.2	7.7	1.9	2.7	0.9	0.4	0.7	34.0
December 2008	10.3	9.3	7.6	1.8	2.7	0.9	0.4	0.7	33.8
March 2009	10.3	8.5	7.0	1.8	2.2	0.8	0.4	0.6	31.7
June 2009	10.0	7.8	6.3	1.6	2.5	0.8	0.4	0.6	29.9
September 2009	9.9	7.7	6.6	1.8	2.4	0.7	0.3	0.6	29.9
December 2009	9.7	8.3	7.0	1.9	2.5	0.7	0.4	0.6	31.1
March 2010	10.3	8.6	6.9	1.8	2.6	0.8	0.4	0.7	32.0
June 2010	10.5	8.5	6.6	1.7	2.6	0.8	0.4	0.6	31.7
September 2010	11.1	8.9	6.7	1.9	2.7	0.8	0.4	0.6	33.1
December 2010	11.0	9.3	7.3	2.0	2.9	0.9	0.4	0.7	34.5
March 2011	11.5	9.3	7.2	1.8	3.0	0.8	0.4	0.6	34.7
June 2011	10.8	9.6	6.7	1.9	3.0	0.8	0.4	0.6	33.9
September 2011	11.8	9.8	7.2	2.2	3.2	0.9	0.4	0.7	36.2
December 2011	10.6	9.5	7.0	2.0	3.0	0.8	0.4	0.6	33.9

For notes on figures and tables, see page 20.

Table 9 In-training as at the end of each quarter by selected training characteristics, Australia, 2006–11 ('000)

		Dec. 2006	Mar. 2007	June 2007	Sept. 2007	Dec. 2007	Mar. 2008	June 2008	Sept. 2008
Age	19 years and under	127.2	142.5	141.0	138.4	131.7	150.0	148.7	144.3
	20 to 24 years	111.1	110.7	112.3	115.8	113.6	112.8	114.6	116.5
	25 to 44 years	111.1	113.2	113.4	115.8	112.7	116.6	120.5	122.6
	45 years and over	46.5	47.3	47.4	48.1	46.5	47.4	50.3	51.2
Sex	Male	266.0	279.1	278.6	281.2	273.2	289.0	291.1	291.0
	Female	129.7	134.5	135.4	137.0	131.3	137.7	143.0	143.5
Occupation (ANZSCO) group	Managers and professionals	8.4	9.2	10.2	11.9	12.2	13.6	14.4	15.4
	Technicians and trades workers	183.4	196.0	195.4	197.3	194.5	209.0	209.4	207.8
	Community and personal service workers	42.1	44.7	45.3	46.0	43.5	45.2	46.4	46.4
	Clerical and administrative workers	52.6	54.0	54.5	54.9	52.1	54.6	58.5	58.4
	Sales workers	43.9	44.1	44.0	44.7	42.4	44.5	45.3	45.7
	Machinery operators and drivers	38.8	38.2	37.7	37.1	35.3	34.9	35.1	36.0
	Labourers	26.8	27.5	27.1	26.3	24.5	25.0	25.1	24.8
AQF qualification level	Certificate I or II	40.6	41.6	41.6	40.9	37.2	39.3	40.3	39.6
	Certificate III	309.2	323.9	323.4	326.1	317.2	333.9	335.4	335.0
	Certificate IV	44.4	46.3	46.8	48.6	47.1	49.8	54.1	55.3
	Diploma/advanced diploma	1.6	1.9	2.3	2.7	3.0	3.8	4.3	4.6
Full-time status	Full-time	318.5	332.1	330.4	333.5	324.7	341.0	344.1	342.6
	Part-time	77.3	81.6	83.6	84.7	79.9	85.8	90.0	92.0
Total⁵		395.8	413.7	414.1	418.2	404.5	426.8	434.1	434.5

For notes on figures and tables, see page 20.

Table 10 Commencements in each quarter by selected training characteristics, Australia, 2006–11 ('000)

		Dec. 2006	Mar. 2007	June 2007	Sept. 2007	Dec. 2007	Mar. 2008	June 2008	Sept. 2008
Age	19 years and under	23.5	43.4	24.0	23.3	23.8	46.4	25.9	22.9
	20 to 24 years	10.1	14.1	11.5	12.8	9.9	14.5	12.3	12.3
	25 to 44 years	17.5	21.4	19.8	22.0	17.2	22.2	23.6	22.1
	45 years and over	7.4	8.4	8.4	8.8	7.1	7.9	11.5	9.2
Sex	Male	33.6	54.4	35.7	38.6	33.3	56.6	39.8	37.7
	Female	24.8	32.9	28.0	28.2	24.6	34.4	33.6	28.9
Occupation (ANZSCO) group	Managers and professionals	1.9	2.1	2.4	3.0	2.2	2.9	2.8	3.0
	Technicians and trades workers	16.4	33.7	15.4	17.8	17.1	36.5	18.5	16.3
	Community and personal service workers	8.9	12.1	10.0	10.1	8.9	11.8	11.6	10.3
	Clerical and administrative workers	10.7	14.1	12.5	12.4	10.1	15.0	16.0	12.6
	Sales workers	9.2	10.5	9.6	10.3	8.4	12.2	10.9	10.8
	Machinery operators and drivers	5.8	6.9	7.4	7.2	5.9	5.9	7.1	7.6
	Labourers	5.6	8.0	6.4	5.9	5.3	6.8	6.5	5.9
AQF qualification level	Certificate I or II	10.0	13.1	10.4	9.6	9.1	12.6	11.0	9.5
	Certificate III	40.3	64.1	44.3	46.7	41.1	66.4	48.5	45.9
	Certificate IV	7.9	9.7	8.4	9.8	7.2	11.0	12.9	10.3
	Diploma/advanced diploma	0.2	0.6	0.7	0.7	0.6	1.2	0.9	0.9
Full-time status	Full-time	42.2	66.9	45.7	49.4	41.7	69.0	51.9	47.0
	Part-time	16.3	20.4	18.0	17.4	16.2	22.0	21.4	19.6
Existing worker	Existing worker	15.3	18.5	17.9	19.6	14.9	18.7	23.2	19.6
	Newly commencing worker	43.1	68.8	45.8	47.2	43.0	72.3	50.2	47.0
Total⁵		58.5	87.4	63.7	66.8	57.9	91.1	73.3	66.6

For notes on figures and tables, see page 20.

Table 9 (continued)

Dec. 2008	Mar. 2009	June 2009	Sept. 2009	Dec. 2009	Mar. 2010	June 2010	Sept. 2010	Dec. 2010	Mar. 2011	June 2011	Sept. 2011	Dec. 2011
134.1	143.9	138.0	131.7	124.3	139.8	136.6	133.0	126.0	139.5	136.6	129.1	118.8
112.7	110.5	110.6	113.2	110.9	111.0	113.8	117.7	115.5	116.2	118.8	120.7	117.9
118.9	121.7	123.4	125.4	122.8	128.1	131.8	136.7	136.4	141.6	144.6	147.8	147.0
49.8	51.4	52.7	54.3	53.8	55.4	56.6	59.3	60.1	62.2	63.9	65.7	65.3
278.7	285.2	281.8	280.1	273.3	288.3	290.2	293.8	288.6	301.7	301.8	299.9	289.7
136.7	142.4	143.0	144.5	138.4	145.9	148.6	152.8	149.4	157.8	162.0	163.4	159.2
14.3	14.5	13.9	13.3	11.9	13.1	14.7	17.3	19.4	23.7	27.8	31.4	34.7
201.1	207.4	203.4	202.1	198.4	211.0	210.5	210.7	206.6	215.8	213.6	209.6	200.5
44.3	47.2	48.0	48.2	45.4	47.6	47.3	48.8	46.1	50.3	51.5	52.1	49.1
55.2	58.1	59.7	61.5	60.0	63.6	65.3	67.6	66.6	68.7	68.6	68.5	65.0
43.7	44.2	43.7	43.7	41.7	43.5	44.8	45.7	44.0	44.6	45.7	44.8	43.4
33.5	32.5	31.7	31.2	31.5	31.4	31.1	30.4	30.2	30.1	30.1	30.0	29.0
23.4	23.7	24.3	24.6	22.7	24.0	25.1	26.1	25.3	26.3	26.5	27.0	27.3
36.2	37.3	36.9	35.3	31.5	33.1	33.3	32.2	29.0	30.6	29.0	25.8	21.2
320.0	325.5	318.9	315.5	307.0	322.0	322.0	323.6	315.9	328.8	329.5	327.6	316.3
54.6	59.8	63.5	67.7	67.2	71.2	73.4	77.1	76.4	78.6	79.4	80.0	77.6
4.6	5.1	5.4	6.1	6.0	8.0	10.2	13.8	16.6	21.5	25.9	29.9	33.9
327.9	334.7	328.9	327.5	319.6	336.2	338.9	344.1	339.8	353.9	353.9	352.2	342.1
87.6	93.0	95.8	97.2	92.1	98.0	99.9	102.5	98.3	105.7	109.8	111.1	106.9
415.4	427.6	424.7	424.6	411.7	434.3	438.8	446.7	438.0	459.5	463.8	463.3	449.0

Table 10 (continued)

Dec. 2008	Mar. 2009	June 2009	Sept. 2009	Dec. 2009	Mar. 2010	June 2010	Sept. 2010	Dec. 2010	Mar. 2011	June 2011	Sept. 2011	Dec. 2011
22.1	37.7	20.2	19.9	23.3	43.4	23.1	23.5	25.6	41.8	24.6	21.4	22.6
9.5	13.0	10.6	11.8	10.2	14.9	13.1	14.1	11.9	16.0	13.9	14.1	12.0
18.2	22.2	21.7	22.7	19.1	25.3	25.0	26.7	22.9	27.0	25.8	27.8	24.7
8.0	9.4	10.1	10.5	9.3	10.2	11.1	12.4	10.9	11.1	11.7	12.9	10.9
32.3	48.7	34.0	34.9	35.2	57.4	39.9	42.1	40.3	56.9	40.7	42.3	38.6
25.4	33.6	28.6	30.0	26.6	36.6	32.4	34.5	31.0	39.1	35.2	34.0	31.6
1.9	2.4	1.9	1.8	1.5	3.5	3.7	5.2	5.2	7.1	7.2	7.4	8.6
15.3	30.0	14.8	15.8	17.7	36.8	19.1	19.6	20.3	34.4	18.9	19.3	17.6
9.4	12.8	10.6	10.4	9.4	12.7	9.8	11.6	9.8	14.4	11.6	11.1	10.5
10.7	15.0	14.0	14.6	12.6	16.3	15.3	15.6	13.8	16.2	14.2	14.4	11.9
9.5	10.5	9.7	10.6	9.4	12.3	12.2	12.3	10.9	12.0	12.5	11.0	9.8
5.3	5.4	5.6	5.7	5.9	5.5	5.9	5.6	5.4	5.3	5.3	5.6	4.8
5.7	6.3	6.0	6.1	5.2	6.8	6.3	6.8	5.9	6.5	6.2	7.3	7.0
9.3	10.8	8.8	8.3	8.1	10.8	8.7	8.0	7.9	10.1	6.7	4.9	4.2
38.6	56.3	39.6	40.4	40.8	65.3	45.5	47.5	45.6	64.1	48.1	49.1	45.0
9.1	14.2	13.1	14.9	12.1	15.0	14.9	16.2	12.8	15.0	14.3	14.8	12.4
0.7	1.1	1.0	1.3	0.9	2.8	3.2	4.9	5.0	6.8	6.9	7.4	8.7
39.3	59.9	42.1	44.5	42.7	69.0	51.2	53.4	49.3	68.7	50.9	53.3	47.7
18.4	22.4	20.4	20.4	19.2	24.9	21.2	23.3	22.0	27.3	25.1	23.0	22.6
16.5	21.8	22.4	24.0	20.2	24.3	26.8	27.8	24.9	27.6	27.8	30.2	27.5
41.2	60.5	40.1	40.9	41.7	69.6	45.6	48.8	46.4	68.4	48.1	46.0	42.7
57.7	82.3	62.5	64.9	61.8	93.9	72.3	76.7	71.3	96.0	76.0	76.3	70.3

Table 11 Completions in each quarter by selected training characteristics, Australia, 2006–11 ('000)

		Dec. 2006	Mar. 2007	June 2007	Sept. 2007	Dec. 2007	Mar. 2008	June 2008	Sept. 2008
Age	19 years and under	8.4	7.4	5.4	5.5	9.1	7.6	6.3	6.5
	20 to 24 years	11.1	14.5	10.2	10.2	11.8	15.1	11.0	10.9
	25 to 44 years	12.5	11.6	12.1	11.8	12.8	11.0	12.1	12.1
	45 years and over	6.9	5.7	6.2	6.0	6.8	5.2	6.6	6.1
Sex	Male	21.6	23.4	19.0	18.9	22.5	23.4	19.8	19.8
	Female	17.3	15.7	14.9	14.6	17.9	15.4	16.2	15.7
Occupation (ANZSCO) group	Managers and professionals	0.8	0.7	0.8	0.7	1.0	0.7	1.2	1.1
	Technicians and trades workers	9.4	12.9	7.9	8.1	10.4	13.8	9.1	9.0
	Community and personal service workers	6.6	5.4	5.3	5.3	7.2	5.9	6.3	6.0
	Clerical and administrative workers	7.5	7.4	6.7	6.6	7.7	7.2	6.9	7.1
	Sales workers	4.8	4.5	4.6	4.8	5.2	4.3	5.1	5.3
	Machinery operators and drivers	5.1	4.5	5.0	4.8	4.9	3.6	4.1	3.9
	Labourers	4.7	3.8	3.6	3.3	3.9	3.3	3.3	3.1
AQF qualification level	Certificate I or II	6.8	5.8	4.8	4.8	6.7	5.0	4.8	5.0
	Certificate III	27.2	29.0	24.7	24.2	28.4	29.2	26.0	25.3
	Certificate IV	4.7	4.3	4.2	4.4	5.2	4.5	4.9	5.0
	Diploma/advanced diploma	0.2	0.1	0.1	0.1	0.2	0.2	0.2	0.2
Actual duration of training	Two years or less	29.8	26.9	25.8	25.3	30.6	26.2	27.4	26.9
	More than two years	9.1	12.3	8.0	8.1	9.8	12.7	8.6	8.6
Full-time status	Full-time	27.8	32.4	26.3	25.7	28.9	31.8	27.3	26.8
	Part-time	11.2	6.8	7.6	7.7	11.6	7.1	8.7	8.7
Total⁵		38.9	39.2	33.9	33.5	40.5	38.9	36.0	35.5

For notes on figures and tables, see page 20.

Table 12 Cancellations and withdrawals² in each quarter by selected training characteristics, Australia, 2006–11 ('000)

		Dec. 2006	Mar. 2007	June 2007	Sept. 2007	Dec. 2007	Mar. 2008	June 2008	Sept. 2008
Age	19 years and under	12.1	13.3	12.2	12.4	13.5	13.6	13.1	13.0
	20 to 24 years	8.4	8.9	8.3	8.6	8.8	8.8	8.4	8.7
	25 to 44 years	8.3	8.8	8.5	8.9	8.6	8.5	8.8	9.3
	45 years and over	2.7	2.7	2.9	2.9	2.8	2.6	2.8	3.0
Sex	Male	19.3	20.7	19.4	20.1	20.8	20.5	20.4	20.9
	Female	12.2	13.0	12.4	12.6	12.9	12.9	12.6	13.1
Occupation (ANZSCO) group	Managers and professionals	0.6	0.6	0.6	0.8	0.8	0.8	0.8	0.9
	Technicians and trades workers	11.3	12.5	12.0	12.3	13.0	13.1	13.4	13.7
	Community and personal service workers	4.1	4.3	4.2	4.1	4.3	4.2	4.1	4.3
	Clerical and administrative workers	4.5	4.8	4.8	4.9	4.7	4.7	4.8	4.9
	Sales workers	5.0	5.4	4.6	4.7	5.1	5.4	4.6	4.7
	Machinery operators and drivers	2.8	2.9	2.7	2.7	2.7	2.5	2.5	2.6
	Labourers	3.3	3.2	3.0	3.2	3.0	2.8	2.8	3.0
AQF qualification level	Certificate I or II	5.9	5.8	5.0	5.2	5.6	5.1	4.7	4.9
	Certificate III	22.7	24.7	23.5	24.1	24.8	25.0	24.9	25.4
	Certificate IV	2.9	3.1	3.2	3.1	3.0	3.1	3.1	3.4
	Diploma/advanced diploma	0.1	0.1	0.2	0.2	0.2	0.2	0.3	0.3
Duration until cancelled/withdrawn	Two years or less	29.3	31.2	29.4	30.3	31.4	31.2	30.7	31.6
	More than two years	2.2	2.5	2.5	2.4	2.2	2.3	2.3	2.4
Full-time status	Full-time	22.7	24.7	23.9	24.3	24.4	24.9	24.9	25.4
	Part-time	8.9	9.0	8.0	8.3	9.2	8.6	8.1	8.6
Total⁵		31.5	33.7	31.9	32.7	33.6	33.4	33.0	34.0

For notes on figures and tables, see page 20.

Table 11 (continued)

Dec. 2008	Mar. 2009	June 2009	Sept. 2009	Dec. 2009	Mar. 2010	June 2010	Sept. 2010	Dec. 2010	Mar. 2011	June 2011	Sept. 2011	Dec. 2011
10.5	7.8	6.5	7.2	10.8	8.5	6.6	7.5	11.8	8.3	7.4	8.5	13.2
13.0	15.1	11.1	11.0	12.8	15.4	11.1	11.4	13.6	15.1	11.7	12.2	14.0
13.8	12.0	12.8	12.8	14.3	12.7	13.3	13.7	14.8	13.4	14.2	15.2	16.3
7.3	5.7	6.5	6.5	7.7	6.3	7.4	7.1	7.4	6.3	7.4	8.1	8.8
25.3	24.8	20.6	20.6	24.9	25.8	21.1	21.8	26.4	25.7	22.5	25.0	29.0
19.2	15.8	16.2	16.9	20.6	17.0	17.4	17.9	21.3	17.5	18.1	19.0	23.3
2.0	1.1	1.4	1.3	2.1	1.4	1.1	1.4	1.8	1.4	1.5	2.0	3.0
11.9	14.8	9.7	9.7	12.5	16.0	10.9	11.4	14.1	15.7	11.6	13.3	15.1
6.9	5.6	5.9	6.1	7.6	6.0	5.6	5.7	8.1	5.7	5.7	5.8	9.3
8.6	7.2	7.3	7.5	9.2	7.5	7.8	7.7	9.1	8.2	8.3	8.2	10.0
6.2	4.7	5.2	6.1	6.4	5.7	6.2	6.7	7.3	6.3	6.7	7.2	7.2
5.0	3.9	4.4	3.9	3.5	3.5	3.9	3.8	3.5	3.2	3.2	3.4	3.6
4.1	3.4	3.0	3.2	4.2	2.8	2.9	2.9	3.7	2.7	3.5	4.1	4.1
6.9	4.8	4.8	5.5	6.9	4.8	4.4	4.9	6.6	4.3	4.6	4.7	5.8
31.2	30.6	26.6	25.9	30.0	31.4	26.2	26.9	31.8	30.7	27.2	29.6	34.5
6.0	4.9	5.1	5.9	8.0	6.2	7.3	7.1	8.1	7.3	7.6	7.9	9.4
0.4	0.3	0.3	0.3	0.6	0.4	0.5	0.7	1.1	0.9	1.2	1.8	2.6
33.9	27.5	28.2	28.7	35.0	29.2	29.3	29.7	36.0	30.7	31.5	34.0	41.1
10.7	13.1	8.7	8.8	10.6	13.6	9.1	10.0	11.6	12.5	9.2	9.9	11.2
32.2	33.0	28.0	27.4	31.8	33.6	28.5	28.6	32.3	33.7	29.4	32.1	35.3
12.4	7.7	8.8	10.1	13.8	9.1	9.9	11.1	15.3	9.5	11.2	11.8	17.0
44.6	40.6	36.9	37.5	45.5	42.8	38.4	39.7	47.6	43.2	40.6	43.9	52.3

Table 12 (continued)

Dec. 2008	Mar. 2009	June 2009	Sept. 2009	Dec. 2009	Mar. 2010	June 2010	Sept. 2010	Dec. 2010	Mar. 2011	June 2011	Sept. 2011	Dec. 2011
13.5	12.5	11.2	10.6	11.6	12.2	11.4	11.4	12.5	12.6	11.8	12.6	12.4
8.7	8.1	7.6	7.4	8.0	8.2	8.1	8.6	8.9	9.1	8.9	9.5	9.0
8.9	8.3	8.2	8.8	8.5	8.7	9.1	9.7	9.6	9.7	9.8	10.5	9.4
2.8	2.7	3.0	3.1	2.9	3.0	3.1	3.5	3.4	3.4	3.3	3.5	3.1
20.7	19.5	18.4	18.3	19.1	19.7	19.4	20.1	21.1	21.2	20.7	22.0	20.9
13.1	12.1	11.5	11.7	12.0	12.4	12.3	13.0	13.3	13.5	13.2	14.2	13.0
1.0	0.9	0.9	1.0	0.7	0.9	0.9	1.0	1.2	1.3	1.5	1.8	1.8
13.3	12.9	12.4	11.8	12.2	13.2	12.9	13.1	13.8	14.2	13.8	14.8	14.4
4.5	4.2	3.8	4.0	4.5	4.5	4.3	4.3	4.3	4.4	4.6	4.9	4.5
4.6	4.4	4.3	4.5	4.4	4.7	5.0	5.2	5.2	5.2	5.2	5.4	4.7
5.0	4.6	4.5	4.0	4.5	4.3	4.3	4.4	4.9	4.8	4.4	4.5	4.0
2.5	2.1	1.8	1.9	2.0	1.9	2.0	2.2	2.1	2.1	1.9	1.9	1.9
3.0	2.5	2.2	2.6	2.8	2.6	2.3	2.9	2.9	2.7	2.5	2.8	2.6
5.3	4.6	4.0	4.1	4.6	4.1	3.8	3.9	4.2	3.9	3.5	3.5	3.0
25.0	23.2	21.9	21.3	21.9	23.1	22.7	23.6	24.5	24.9	24.1	25.9	24.7
3.1	3.5	3.7	4.1	4.2	4.4	4.6	4.9	4.8	4.7	5.0	5.1	4.4
0.4	0.3	0.4	0.4	0.4	0.5	0.6	0.7	1.0	1.1	1.3	1.6	1.7
31.6	29.4	27.5	27.8	28.8	29.6	29.2	30.6	32.1	32.3	31.6	34.0	31.9
2.2	2.3	2.4	2.2	2.2	2.4	2.5	2.6	2.4	2.4	2.3	2.1	2.0
24.1	23.0	21.7	21.6	21.5	22.9	23.1	24.1	24.5	25.0	24.5	26.4	24.1
9.7	8.7	8.1	8.4	9.5	9.1	8.6	9.0	10.0	9.7	9.4	9.8	9.8
33.8	31.7	29.9	29.9	31.1	32.0	31.7	33.1	34.5	34.7	33.9	36.2	33.9

Table 13 In-training in top 20 training packages by state/territory, as at 31 December 2011 ('000)

Training package	NSW	Vic.	Qld	SA	WA	Tas.	NT	ACT	Australia
Business Services (BSA, BSB)	25.3	17.7	18.2	7.3	2.6	2.2	0.4	1.0	74.6
Construction, Plumbing and Services Integrated Framework (BCF, BCG, BCP, CPC)	13.4	17.7	9.3	3.1	3.6	1.4	0.4	1.1	50.0
Retail Services (SIR, WRP, WRR, WRW)	10.9	12.8	6.6	4.0	1.8	1.0	0.3	0.5	37.7
Tourism, Hospitality and Events (SIT, THH, THT)	13.0	10.0	5.7	1.7	2.0	1.1	0.3	0.9	34.5
Electrotechnology (UEE, UTE, UTL)	8.5	7.5	6.7	2.5	3.7	0.6	0.5	0.7	30.7
Automotive Industry Retail, Service and Repair (AUR)	8.8	6.4	5.5	2.4	3.3	0.6	0.4	0.4	27.9
Transport and Logistics (TDT, TLI)	10.8	5.5	3.4	2.3	2.9	0.5	0.1	0.3	25.9
Community Services (CHC)	9.7	5.1	4.2	1.1	2.2	1.0	0.4	1.2	25.0
Metal and Engineering (MEM)	5.4	4.7	7.4	1.6	4.6	0.6	0.2	0.1	24.5
Manufacturing (MCM, MSA)	4.4	8.5	1.8	0.8	1.3	-	0.0	-	16.7
Agriculture, Horticulture and Conservation and Land Management (AHC, RTD, RTE, RTF, RUA, RUH)	3.2	3.7	1.8	1.3	0.5	0.3	0.1	0.1	11.1
Hairdressing (SIH, WRH)	3.3	2.1	2.7	0.8	1.2	0.2	0.1	0.3	10.7
Resources and Infrastructure (BCC, DRT, MNC, MNM, MNQ, RII)	2.6	0.7	2.6	0.9	2.2	0.4	0.2	0.0	9.7
Financial Services (FNA, FNB, FNS)	3.1	1.5	1.9	0.6	0.3	0.1	0.1	0.1	7.7
Food Processing Industry (FDF)	2.1	2.6	1.1	0.7	0.4	0.2	0.0	0.1	7.2
Australian Meat Industry (MTM)	1.9	1.4	1.8	0.8	0.6	0.2	0.0	0.1	6.7
Health (HLT)	3.0	2.0	0.5	0.2	0.2	0.1	0.0	0.1	6.2
Furnishing (LMF)	1.3	1.7	1.3	0.4	0.7	0.2	0.1	0.1	5.8
Asset Maintenance (PRM)	1.9	0.8	0.9	0.3	0.2	0.1	0.0	0.3	4.5
Sport, Fitness and Recreation (SIS, SRC, SRF, SRO, SRS)	0.6	1.2	1.6	0.1	0.2	0.0	0.0	0.1	3.8
Top 20 training packages sub-total	133.0	113.4	85.0	33.0	34.7	11.0	3.6	7.4	421.1
Other training packages	8.9	4.2	5.4	2.5	3.2	0.7	0.4	1.2	26.5
All training packages	141.9	117.7	90.4	35.4	37.9	11.7	4.0	8.6	447.6
Non-training packages	0.4	0.2	0.2	0.0	0.5	0.0	0.0	0.0	1.4
Total number	142.2	117.9	90.6	35.4	38.4	11.7	4.0	8.6	449.0
Training packages as proportion of total (%)	99.7	99.8	99.8	100.0	98.7	99.8	100.0	100.0	99.7

A dash (-) represents a true zero figure, with no contracts reported in these categories.

For notes on figures and tables, see page 20.

Table 14 Commencements in top 20 training packages by state/territory, December quarter 2011 ('000)

Training package	NSW	Vic.	Qld	SA	WA	Tas.	NT	ACT	Australia
Business Services (BSA, BSB)	5.1	4.4	3.8	1.2	1.1	0.5	0.1	0.2	16.4
Retail Services (SIR, WRP, WRR, WRW)	2.0	3.9	1.3	0.7	0.5	0.3	0.1	0.1	8.7
Tourism, Hospitality and Events (SIT, THH, THT)	2.0	2.3	1.2	0.3	0.5	0.2	0.1	0.1	6.6
Transport and Logistics (TDT, TLI)	1.7	1.1	0.5	0.5	0.6	0.1	0.0	0.0	4.6
Community Services (CHC)	1.7	0.9	0.9	0.3	0.5	0.2	0.0	0.1	4.6
Manufacturing (MCM, MSA)	0.7	2.5	0.3	0.3	0.2	-	-	-	4.1
Construction, Plumbing and Services Integrated Framework (BCF, BCG, BCP, CPC)	0.9	1.1	0.5	0.1	0.4	0.1	0.0	0.0	3.2
Automotive Industry Retail, Service and Repair (AUR)	0.8	0.6	0.6	0.4	0.3	0.0	0.0	0.0	2.8
Electrotechnology (UEE, UTE, UTL)	0.6	0.4	0.5	0.1	0.3	0.0	0.0	0.0	2.0
Metal and Engineering (MEM)	0.4	0.3	0.5	0.1	0.5	0.0	0.0	0.0	1.9
Resources and Infrastructure (BCC, DRT, MNC, MNM, MNQ, RII)	0.4	0.3	0.3	0.1	0.5	0.0	0.0	-	1.7
Agriculture, Horticulture and Conservation and Land Management (AHC, RTD, RTE, RTF, RUA, RUH)	0.5	0.6	0.2	0.2	0.1	0.0	0.0	0.0	1.6
Australian Meat Industry (MTM)	0.4	0.3	0.4	0.2	0.1	0.0	0.0	0.0	1.4
Financial Services (FNA, FNB, FNS)	0.4	0.4	0.3	0.1	0.1	0.0	0.0	0.0	1.3
Hairdressing (SIH, WRH)	0.4	0.3	0.3	0.1	0.2	0.0	0.0	0.0	1.3
Sport, Fitness and Recreation (SIS, SRC, SRF, SRO, SRS)	0.1	0.6	0.5	0.0	0.0	0.0	0.0	0.0	1.2
Food Processing Industry (FDF)	0.3	0.6	0.2	0.1	0.1	0.0	0.0	0.0	1.2
Asset Maintenance (PRM)	0.3	0.3	0.2	0.1	0.1	0.0	-	0.1	1.0
Health (HLT)	0.4	0.3	0.1	0.0	0.0	0.0	0.0	0.0	0.9
Property Services (CPP, PRD, PRS)	0.2	0.0	0.1	0.0	0.1	0.0	-	0.1	0.6
Top 20 training packages sub-total	19.3	21.2	12.6	5.0	6.0	1.7	0.4	0.9	67.0
Other training packages	0.8	0.6	0.8	0.3	0.6	0.1	0.0	0.1	3.2
All training packages	20.0	21.8	13.4	5.3	6.6	1.7	0.4	0.9	70.2
Non-training packages	0.0	0.0	0.0	0.0	0.0	0.0	-	-	0.0
Total number	20.0	21.8	13.4	5.3	6.6	1.7	0.4	0.9	70.3
Training packages as proportion of total (%)	100.0	99.9	99.9	100.0	99.9	99.9	100.0	100.0	99.9

A dash (-) represents a true zero figure, with no contracts reported in these categories.

For notes on figures and tables, see page 20.

Training activity: 12-month ending series

Table 15 Commencements by selected training characteristics, 12 months ending 31 December, Australia, 2006–11 ('000)

		12 months ending 31 December					
		2006	2007	2008	2009	2010	2011
Age	19 years and under	109.6	114.6	117.4	101.1	115.5	110.5
	20 to 24 years	46.3	48.2	48.6	45.5	54.1	56.1
	25 to 44 years	78.1	80.4	86.1	85.7	99.9	105.2
	45 years and over	32.4	32.7	36.6	39.2	44.6	46.7
Sex	Male	156.5	162.0	166.4	152.7	179.7	178.5
	Female	109.9	113.8	122.3	118.8	134.5	140.0
Occupation (ANZSCO) group	Managers and professionals	7.3	9.7	10.6	7.6	17.6	30.3
	Technicians and trades workers	76.7	84.1	86.6	78.2	95.8	90.2
	Community and personal service workers	38.7	41.1	43.1	43.2	43.9	47.6
	Clerical and administrative workers	48.6	49.2	54.3	56.2	61.0	56.8
	Sales workers	40.2	38.8	43.4	40.2	47.8	45.4
	Machinery operators and drivers	28.1	27.4	25.9	22.6	22.5	21.1
	Labourers	26.9	25.6	24.9	23.6	25.8	27.1
AQF qualification level	Certificate I or II	44.5	42.1	42.3	36.0	35.5	25.9
	Certificate III	187.4	196.1	199.4	177.0	203.9	206.2
	Certificate IV	33.4	35.1	43.2	54.3	58.9	56.5
	Diploma/advanced diploma	1.1	2.6	3.8	4.2	15.9	29.8
Full-time status	Full-time	197.2	203.8	207.3	189.2	222.9	220.5
	Part-time	69.2	72.0	81.4	82.3	91.3	97.9
Total⁵		266.4	275.8	288.7	271.5	314.2	318.4

For notes on figures and tables, see page 20.

Table 16 Completions by selected training characteristics, 12 months ending 31 December, Australia, 2006–11 ('000)

		12 months ending 31 December					
		2006	2007	2008	2009	2010	2011
Age	19 years and under	26.7	27.4	30.8	32.4	34.3	37.3
	20 to 24 years	44.4	46.7	50.0	49.9	51.5	53.0
	25 to 44 years	46.6	48.2	49.0	51.9	54.5	59.2
	45 years and over	24.4	24.7	25.1	26.3	28.2	30.6
Sex	Male	80.2	83.8	88.3	90.9	95.0	102.2
	Female	61.9	63.2	66.6	69.6	73.5	77.8
Occupation (ANZSCO) group	Managers and professionals	2.3	3.1	5.1	6.0	5.7	7.9
	Technicians and trades workers	35.1	39.4	43.8	46.7	52.3	55.7
	Community and personal service workers	23.0	23.1	25.1	25.1	25.5	26.5
	Clerical and administrative workers	28.7	28.3	29.8	31.1	32.1	34.8
	Sales workers	18.6	19.2	20.8	22.3	25.9	27.4
	Machinery operators and drivers	19.3	19.1	16.6	15.7	14.6	13.3
	Labourers	15.2	14.7	13.8	13.7	12.3	14.4
AQF qualification level	Certificate I or II	22.9	22.0	21.7	22.1	20.8	19.4
	Certificate III	102.4	106.2	111.7	113.1	116.2	122.1
	Certificate IV	16.4	18.2	20.5	23.9	28.8	32.1
	Diploma/advanced diploma	0.5	0.6	1.1	1.5	2.7	6.5
Actual duration of training	Two years or less	106.1	108.7	114.5	119.3	124.3	137.4
	More than two years	36.0	38.3	40.5	41.2	44.2	42.7
Full-time status	Full-time	107.7	113.4	118.1	120.1	123.0	130.6
	Part-time	34.4	33.6	36.8	40.4	45.5	49.5
Total⁵		142.2	147.0	155.0	160.5	168.5	180.0

For notes on figures and tables, see page 20.

Table 17 Commencements by occupation and state/territory, 12 months ending 31 December 2011 ('000)

Occupation (ANZSCO) group	NSW	Vic.	Qld	SA	WA	Tas.	NT	ACT	Australia
Managers	6.9	8.8	6.8	2.2	1.1	0.8	0.2	0.7	27.4
11 Chief executives, general managers and legislators	-	-	-	-	-	-	-	-	-
12 Farmers and farm managers	0.4	0.5	0.3	0.2	0.1	0.1	0.1	-	1.7
13 Specialist managers	6.5	7.9	6.2	1.8	0.9	0.7	0.1	0.4	24.5
14 Hospitality, retail and service managers	0.0	0.3	0.2	0.1	0.0	0.1	0.0	0.3	1.2
Professionals	0.3	1.2	0.6	0.5	0.2	0.0	0.0	0.1	2.9
21 Arts and media professionals	-	0.0	-	-	-	-	-	-	0.0
22 Business, human resource and marketing professionals	0.2	1.0	0.3	0.1	0.1	0.0	0.0	0.0	1.8
23 Design, engineering, science and transport professionals	0.1	0.2	0.1	0.1	0.0	0.0	0.0	-	0.5
24 Education professionals	-	-	0.2	0.3	-	-	-	0.1	0.6
25 Health professionals	0.0	-	-	-	-	-	-	-	0.0
26 ICT professionals	0.0	-	-	0.0	-	0.0	-	0.0	0.0
27 Legal, social and welfare professionals	0.0	0.0	0.0	0.0	0.0	-	-	-	0.1
Technicians and trades workers	24.1	23.7	20.9	6.6	10.6	1.9	1.0	1.3	90.2
31 Engineering, ICT and science technicians	1.5	1.3	2.6	0.8	1.1	0.2	0.2	0.1	7.7
32 Automotive and engineering	5.4	4.0	5.4	1.5	3.4	0.4	0.3	0.2	20.5
33 Construction trades workers	4.8	7.1	3.2	1.0	1.6	0.5	0.1	0.4	18.7
34 Electrotechnology and telecommunications trades workers	3.5	2.9	2.8	0.9	1.6	0.2	0.2	0.2	12.2
35 Food trades workers	2.8	2.7	2.0	0.6	0.7	0.4	0.1	0.1	9.4
36 Skilled animal and horticultural workers	1.6	1.7	0.9	0.6	0.3	0.1	0.0	0.0	5.1
39 Other technicians and trades workers	4.6	4.1	4.1	1.2	1.9	0.3	0.1	0.2	16.4
391 Hairdressers	1.5	1.2	1.2	0.4	0.5	0.1	0.0	0.2	5.0
392 Printing trades workers	0.1	0.3	0.1	0.2	0.0	0.0	0.0	0.0	0.8
393 Textile, clothing and footwear trades workers	0.0	0.0	0.0	0.0	0.0	0.0	-	0.0	0.1
394 Wood trades workers	0.4	0.5	0.4	0.1	0.2	0.0	0.0	0.0	1.7
399 Miscellaneous	2.5	2.1	2.4	0.5	1.1	0.1	0.1	0.0	8.8
Community and personal service workers	14.8	15.6	8.5	1.9	3.8	1.3	0.4	1.3	47.6
41 Health and welfare support workers	2.3	1.8	0.6	0.2	0.5	0.3	0.0	0.1	5.7
42 Carers and aides	4.7	2.9	2.4	0.6	1.4	0.3	0.2	0.5	13.0
43 Hospitality workers	6.4	8.1	3.1	0.7	1.1	0.5	0.1	0.3	20.4
44 Protective service workers	0.1	0.1	0.2	0.1	0.2	0.0	0.0	0.2	0.9
45 Sports and personal service workers	1.4	2.7	2.2	0.3	0.6	0.2	0.1	0.1	7.6
Clerical and administrative workers	18.6	15.2	11.6	4.9	3.7	1.6	0.4	0.7	56.8
51 Office managers and program administrators	9.1	4.1	6.0	2.6	0.8	0.5	0.1	0.4	23.6
52 Personal assistants and secretaries	-	0.0	-	-	-	-	-	-	0.0
53 General clerical workers	3.4	2.3	2.7	1.0	1.3	0.4	0.2	0.2	11.4
54 Inquiry clerks and receptionists	3.0	6.0	1.3	0.5	0.5	0.4	0.0	0.1	11.8
55 Numerical clerks	2.1	1.0	1.2	0.4	0.4	0.1	0.1	0.0	5.3
56 Clerical and office support workers	-	-	-	-	-	-	-	-	-
59 Other clerical and administrative workers	1.0	1.7	0.6	0.4	0.7	0.1	0.0	0.0	4.6
Sales workers	11.8	17.4	8.0	3.7	2.5	1.3	0.2	0.4	45.4
61 Sales representatives and agents	2.4	0.4	1.1	0.2	0.2	0.1	0.0	0.1	4.3
62 Sales assistants and salespersons	9.5	17.0	6.9	3.5	2.3	1.2	0.2	0.4	41.0
63 Sales support workers	-	-	-	-	-	-	-	-	-
Machinery operators and drivers	7.9	4.4	3.5	2.1	2.6	0.4	0.1	0.1	21.1
71 Machine and stationary plant operators	0.9	0.4	0.6	0.3	0.6	0.1	0.0	0.0	2.9
72 Mobile plant operators	0.8	0.0	0.4	0.0	0.3	0.1	0.0	-	1.6
73 Road and rail drivers	2.2	1.5	1.1	1.3	1.0	0.1	0.0	0.1	7.4
74 Storepersons	4.0	2.5	1.3	0.5	0.7	0.1	0.0	0.0	9.1
Labourers	6.1	10.2	4.6	2.1	2.8	0.6	0.3	0.3	27.1
81 Cleaners and laundry workers	1.2	0.7	0.9	0.3	0.4	0.1	0.0	0.2	3.8
82 Construction and mining labourers	0.4	0.0	0.2	0.1	0.7	0.0	0.1	0.1	1.7
83 Factory process workers	3.2	8.3	2.5	1.3	1.0	0.2	0.0	0.0	16.5
84 Farm, forestry and garden workers	0.5	0.5	0.4	0.1	0.4	0.1	0.1	0.0	2.2
85 Food preparation assistants	0.1	0.1	0.1	0.0	0.1	0.0	0.0	0.0	0.4
89 Other labourers	0.7	0.6	0.5	0.2	0.3	0.1	0.1	0.0	2.5
Total⁵	90.5	96.5	64.5	24.0	27.4	7.9	2.7	5.0	318.4

A dash (-) represents a true zero figure, with no contracts reported in these categories.

For notes on figures and tables, see page 20.

Table 18 Commencements by industry skills councils, 12 months ending 31 December 2011, Australia ('000)

Industry skills councils	Trades ³	Non-trades ³	Total
AgriFood	8.8	11.6	20.4
Auto Skills Australia	10.8	3.0	13.8
Community Services and Health	1.6	24.1	25.7
Construction and Property Services	18.4	7.4	25.8
ElectroComms and Energy Utilities	11.5	0.1	11.6
ForestWorks	0.0	0.5	0.5
Government	0.0	2.1	2.1
Innovation and Business	4.4	74.5	78.9
Manufacturing	19.1	10.9	29.9
Service	11.2	70.4	81.5
SkillsDMC	4.2	3.0	7.2
Transport and Logistics	-	20.5	20.5
Training packages not assigned to industry skills councils	-	-	-
Training package qualifications total	90.1	228.1	318.1
Non-training package qualifications total	0.1	0.2	0.3
Total	90.2	228.3	318.4

A dash (-) represents a true zero figure, with no contracts reported in these categories.
For notes on figures and tables, see page 20.

Seasonally adjusted commencements

Table 19 Seasonally adjusted commencements in each quarter, by state/territory, 2006–11 ('000)

Quarter	NSW	Vic.	Qld	SA	WA	Tas.	NT	ACT	Australia
December 2006	19.6	18.3	15.0	5.2	5.6	2.0	0.5	1.4	67.4
March 2007	20.2	18.4	15.5	5.3	5.7	2.0	0.5	1.3	68.9
June 2007	20.3	18.0	15.9	5.3	5.7	2.0	0.6	1.2	68.9
September 2007	20.4	17.6	15.8	5.2	5.7	2.0	0.6	1.2	68.6
December 2007	21.3	17.8	16.0	5.3	5.9	2.1	0.7	1.2	70.3
March 2008	22.8	18.4	16.2	5.4	6.1	2.2	0.7	1.2	73.1
June 2008	23.5	18.9	16.0	5.5	6.3	2.1	0.7	1.2	74.0
September 2008	22.8	18.7	14.9	5.4	6.2	2.0	0.6	1.1	71.8
December 2008	21.3	18.1	13.6	5.2	6.0	1.9	0.6	1.2	67.9
March 2009	20.5	17.8	13.0	5.2	5.8	1.8	0.6	1.2	65.8
June 2009	20.8	17.7	13.5	5.1	5.6	1.8	0.7	1.3	66.3
September 2009	21.4	18.3	14.2	5.1	5.8	1.7	0.7	1.2	68.5
December 2009	22.3	19.2	14.9	5.4	6.1	1.8	0.7	1.2	71.6
March 2010	23.5	20.1	15.4	5.6	6.4	1.9	0.7	1.2	74.8
June 2010	24.4	21.0	16.1	5.8	6.7	2.1	0.7	1.2	77.9
September 2010	24.7	21.9	16.5	5.9	7.0	2.1	0.7	1.3	79.9
December 2010	24.1	23.0	16.4	5.9	7.0	2.0	0.7	1.2	80.4
March 2011	23.2	23.8	16.2	6.0	6.9	2.0	0.7	1.2	80.0
June 2011	22.6	24.1	16.2	6.0	6.8	2.0	0.7	1.2	79.7
September 2011	22.5	24.2	16.5	6.0	6.9	2.0	0.6	1.2	80.0
December 2011	22.5	24.2	16.6	6.1	7.1	2.0	0.6	1.3	80.3

For notes on figures and tables, see page 20.

Terms

Australian Qualifications Framework (AQF) is a national framework of credentials that covers qualifications from certificate I through to a doctoral degree. For more details on the AQF, go to <<http://www.aqf.edu.au>>.

Australian and New Zealand Standard Classification of Occupations (ANZSCO) is a classification of the occupation of individuals. The classification is based on the Australian Bureau of Statistics publication, *Australian and New Zealand Standard Classification of Occupations* (1st edition, ABS cat.no.1220.0).

Cancellations and withdrawals refers to apprentices and trainees whose contract of training has been terminated prior to a successful completion. Cancellation and withdrawal figures in Victoria and Tasmania also include contracts which have been transferred, due to a change in employer.

Commencements refers to apprentices and trainees starting a program of training. The date of commencement is the date that an apprentice or trainee's contract of training is registered or approved under the provisions of the relevant state/territory legislation.

Completions refers to apprenticeship or traineeship contracts of training where all of the prescribed requirements have been met.

Contract status indicates the status of apprentice and trainee contracts of training, including the commencement, completion, and cancellation/withdrawal of contracts, and apprentices and trainees 'in-training'.

Existing workers refers to those apprentices and trainees who were employed by their current employer for more than three months full-time (or 12 months part-time/casual) prior to commencing their training contract.

Full-time apprentices or trainees are those whose ordinary hours of employment, including the training component, are at least the usual hours of employment for a full-time employee in that occupation.

Industry skills councils are organisations representing particular industries. For more information on industry skills councils, go to <<http://www.isc.org.au>>. For more information on training packages developed by industry skills councils, go to <<http://www.training.gov.au>>.

In-training refers to apprentices and trainees who are actively training, at the end of each quarter, under the terms of their training contract, and who have not completed, cancelled or withdrawn from their training, nor had their training contract expire without meeting all of the prescribed requirements of their program.

Non-trades refers to those apprentices and trainees employed in occupations outside the trades. 'Non-trades' includes all occupations listed under ANZSCO 1st edition, with the exception of major group 3 (Technicians and trades workers).

Part-time apprentices or trainees are defined as those whose ordinary hours of employment, including the training component, are less than full-time. Part-time provisions vary across Australia and across occupations, with 'part-time' defined by each state and territory.

Seasonal adjustment refers to a mathematical model used in time series data to smooth out fluctuations attributable to seasonal influences.

Trades refers to those apprentices and trainees employed in trades occupations under major group 3 (Technicians and trades workers) of ANZSCO 1st edition.

Training duration indicates the amount of time that an apprentice or trainee takes to complete their contract of training from the time of commencement.

Training packages are a set of nationally endorsed standards, guidelines and qualifications for training and for recognising and assessing skills. For more details on training packages, go to <<http://www.training.gov.au>>.

12-month ending series refers to the total number of commencements, completions and cancellations/withdrawals within a 12-month period (i.e. summing the current quarter with the previous three quarters).

Technical notes

Data source

Information included in this publication is, unless stated otherwise, derived from the National Apprentice and Trainee Collection no.71, March 2012 estimates, which is compiled under the Australian Vocational Education and Training Management Information Statistical Standard (AVETMISS) for Apprentice and Trainee Collection Specifications, Release 6.0, March 2008.

Estimation procedure

This publication contains figures on apprentice and trainee activity (such as commencements, completions and in-training) based on the date of effect rather than the date of processing. Due to lags in processing, the most recent figures in this publication are estimated (for training activity from June quarter 2010 to December quarter 2011). The estimation method involves weighting recently processed numbers based on average reporting lags. Because estimates are revised for up to seven quarters, figures for the last two years may differ from those published in earlier or in subsequent reports. Further details on the methodology can be found at <http://www.ncver.edu.au/publications/2267.html>.

Seasonal adjustments

Seasonally adjusted data in this publication are derived from table 2 for in-training, table 4 for commencements, table 6 for completions and table 8 for cancellations and withdrawals. These data are adjusted using X-11-ARIMA methodology and then are 7-point Henderson-smoothed. The seasonally adjusted data used in figures 1–3 are available at <http://www.ncver.edu.au/publications/2499.html>.

Notes on figures and tables

Due to lags in processing numbers, recent quarter activity is estimated. Proportions (percentages) may be subject to error as they are based on a sample, not the total population. Figures in bold are actual numbers.

See <<http://www.ncver.edu.au/publications/2499.html>> for the standard errors on these estimates.

- 1 The data have been seasonally adjusted and smoothed. For further information please refer to the technical notes on page 19.
- 2 The cancellation and withdrawal figures are inclusive of the contract status 'transferred' for Victoria and Tasmania, as contract transfers due to a change in employer were historically reported as cancellations or withdrawals.
- 3 Non-trades are defined as all major occupations groups 1–2 and 4–8 (ANZSCO 1st edition). Trades are defined as all major group 3 (Technicians and trades workers) (ANZSCO 1st edition).
- 4 The data presented in figure 3 use ANZSCO. ANZSCO has now been back-cast by NCVER to 1994 for reporting purposes. For further information on the methodology, see <<http://www.ncver.edu.au/publications/2266.html>>.
- 5 Unknown data have not been reported, whereas the total includes all contracts, including those with unknown status. Hence, some figures may not sum to the total.



National Centre for Vocational Education Research Ltd
Level 11, 33 King William Street, Adelaide, South Australia
PO Box 8288, Station Arcade, SA 5000 Australia
Telephone +61 8 8230 8400 Facsimile +61 8 8212 3436
Website www.ncveredu.au Email ncver@ncveredu.au