

Eight-Year Trends in Federal Graduation Rates and Graduation Success Rates at NCAA Division I Institutions

NCAA Research Staff
November 2009



Comparison of GSR and Federal Graduation Rate Cohorts (1999-2002 Entering Classes)

	Federal Rate	GSR
Enrolled (Under Federal Definition)	74,875	74,875
Enrolled as Frosh in January	0	2,006
Two-Year College Transfers	0	8,977
Four-Year College Transfers	0	7,261
Non-Scholarship Athletes (Only at Schools not Offering Aid)	0	9,507
Total Enrolled	74,875	102,626 (+37.1%)
Allowable Exclusions (Death, Military, Church Mission, etc.)	265	344
Left Eligible	0	19,345
Total Denominator	74,610	82,937 (+11.2%)

Trends in Graduation Success Rates (GSR)



Average GSRs for Division I Student-Athletes in 1998-01 Cohorts Vs. 1999-2002 Cohorts

	1998-01 Cohorts	1999-02 Cohorts
Division I Overall	78%	79%
Division I Men	71%	72%
Division I Women	87%	88%
Division I Football Bowl Subdivision	79%	79%
Division I Football Championship Subdivision	75%	76%
Division I (No Football)	81%	81%

Graduation Success Rate Trends for Division I Men's Sports
Four-Class Averages for 1998-01 Cohorts vs. 1999-02 Cohorts

SPORT	Four-Class Average 1998-01 Cohorts	Four-Class Average 1999-02 Cohorts
Baseball	68%	69%
Basketball	62%	64%
Cross Country/Track	74%	75%
Fencing	86%	84%
Football (FBS)	67%	67%
Football (FCS)	65%	64%
Golf	79%	80%
Gymnastics	86%	85%
Ice Hockey	83%	82%
Lacrosse	88%	88%
Rifle	80%	82%
Skiing	81%	87%
Soccer	79%	78%
Swimming	83%	83%
Tennis	83%	84%
Volleyball	83%	79%
Water Polo	87%	87%
Wrestling	72%	72%

Graduation Success Rate Trends for Division I Women's Sports
Four-Class Averages for 1998-01 Cohorts vs. 1999-02 Cohorts

SPORT	Four-Class Average 1998-01 Cohorts	Four-Class Average 1999-02 Cohorts
Basketball	82%	83%
Bowling	68%	76%
Crew	91%	91%
Cross Country/Track	84%	85%
Fencing	90%	91%
Field Hockey	94%	93%
Golf	87%	88%
Gymnastics	95%	94%
Ice Hockey	90%	91%
Lacrosse	94%	94%
Rifle	82%	82%
Skiing	96%	98%
Soccer	89%	89%
Softball	86%	86%
Swimming	90%	91%
Tennis	89%	89%
Volleyball	88%	88%
Water Polo	86%	88%

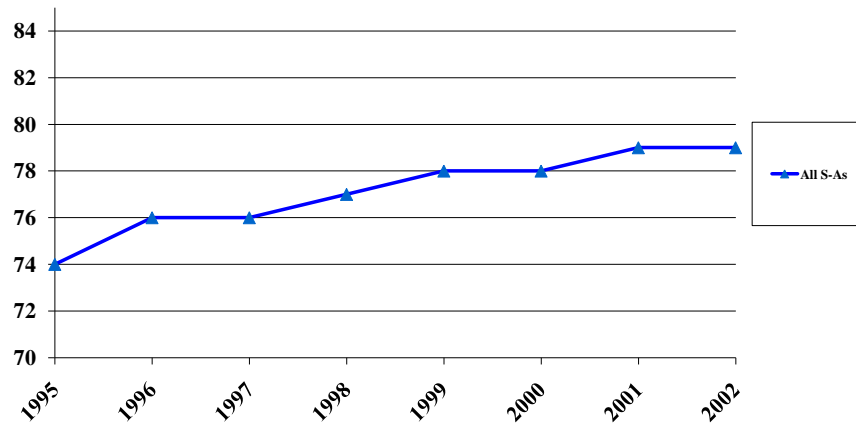
Graduation Success Rate Trends for Division I Men's Sports
1995 to 2002 Entering Cohorts

SPORT	1995	1996	1997	1998	1999	2000	2001	2002
Baseball	65.3%	66.7%	63.9%	64.7%	66.7%	67.3%	71.7%	69.9%
Basketball	55.8%	58.7%	59.5%	59.0%	60.7%	63.6%	65.0%	65.5%
X-Country/Track	72.1%	74.0%	72.6%	73.6%	75.9%	73.5%	75.4%	74.6%
Fencing	100%	82.4%	86.7%	90.0%	88.9%	84.6%	81.0%	81.0%
Football (FBS)	63.1%	65.6%	66.7%	65.5%	67.6%	66.7%	66.4%	65.9%
Football (FCS)	62.0%	63.4%	64.6%	65.7%	64.2%	65.1%	62.7%	65.7%
Golf	77.0%	77.0%	76.4%	77.6%	79.0%	80.6%	79.6%	80.6%
Gymnastics	76.4%	80.4%	92.7%	91.8%	81.4%	84.8%	86.7%	85.7%
Ice Hockey	78.0%	81.5%	83.0%	82.3%	89.3%	79.1%	80.1%	79.2%
Lacrosse	91.2%	92.0%	89.3%	85.0%	87.4%	90.2%	90.9%	83.0%
Rifle	84.2%	67.9%	70.8%	73.1%	84.0%	82.8%	77.8%	80.0%
Skiing	84.2%	100%	100%	68.4%	94.7%	76.9%	88.2%	85.0%
Soccer	74.3%	77.5%	74.9%	80.4%	78.4%	75.4%	80.1%	77.7%
Swimming	81.0%	81.7%	81.8%	81.1%	82.3%	84.3%	86.0%	81.3%
Tennis	84.7%	82.1%	82.9%	83.3%	81.9%	81.9%	84.5%	86.5%
Volleyball	72.9%	74.0%	63.0%	84.1%	84.0%	84.5%	80.9%	67.3%
Water Polo	94.6%	86.0%	85.4%	86.7%	80.0%	87.1%	91.7%	85.7%
Wrestling	61.5%	71.6%	63.3%	70.4%	70.7%	73.8%	70.2%	71.8%
Overall	67.6%	69.6%	69.1%	69.8%	70.9%	71.6%	72.7%	72.1%

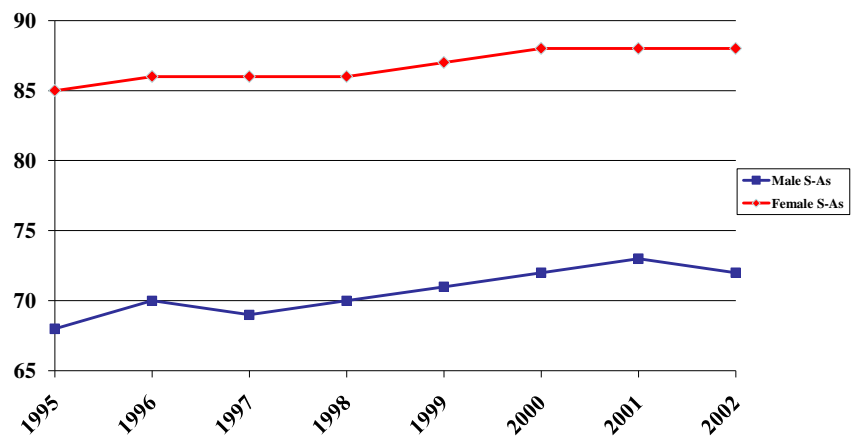
Graduation Success Rate Trends for Division I Women's Sports
1995 to 2002 Entering Cohorts

SPORT	1995	1996	1997	1998	1999	2000	2001	2002
Basketball	79.8%	83.7%	79.9%	81.5%	81.9%	81.0%	85.3%	82.8%
Bowling	100%	100%	90.9%	50.0%	69.2%	68.2%	78.6%	86.4%
Crew	89.6%	89.7%	88.9%	89.2%	88.5%	91.8%	91.9%	92.0%
X-Country/Track	82.4%	82.8%	82.1%	83.1%	83.3%	84.6%	85.6%	85.3%
Fencing	86.7%	92.9%	100%	94.7%	88.9%	89.3%	87.0%	100%
Field Hockey	92.9%	93.7%	91.7%	95.5%	93.3%	93.1%	93.0%	94.1%
Golf	88.3%	90.6%	84.2%	86.5%	89.3%	88.2%	86.4%	89.4%
Gymnastics	93.1%	92.4%	89.0%	97.1%	96.1%	94.6%	92.5%	92.8%
Ice Hockey	85.7%	100%	85.0%	83.3%	89.3%	96.8%	87.1%	89.8%
Lacrosse	93.9%	93.0%	95.1%	92.9%	92.7%	94.9%	95.7%	92.9%
Rifle	66.7%	90.0%	78.6%	62.5%	83.3%	80.0%	80.0%	82.1%
Skiing	100%	93.8%	86.4%	95.8%	100%	100%	96.0%	95.0%
Soccer	86.1%	86.7%	88.3%	86.6%	89.4%	89.9%	89.3%	88.6%
Softball	82.3%	84.5%	84.6%	84.8%	86.5%	86.0%	87.3%	85.7%
Swimming	90.8%	91.1%	90.8%	90.6%	90.3%	91.1%	90.2%	91.7%
Tennis	85.7%	88.4%	87.6%	88.8%	88.5%	89.4%	90.3%	88.5%
Volleyball	83.2%	86.6%	87.0%	87.4%	87.8%	88.0%	88.1%	89.2%
Water Polo	100%	80.8%	88.7%	81.7%	89.6%	81.0%	91.0%	91.0%
Overall	84.9%	86.3%	85.6%	86.1%	87.2%	87.5%	88.2%	87.9%

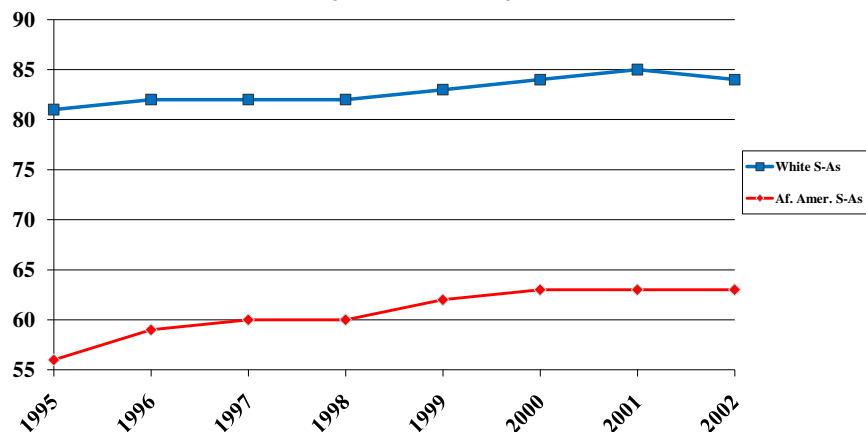
Graduation Success Rates of All Student-Athletes at Division I Institutions



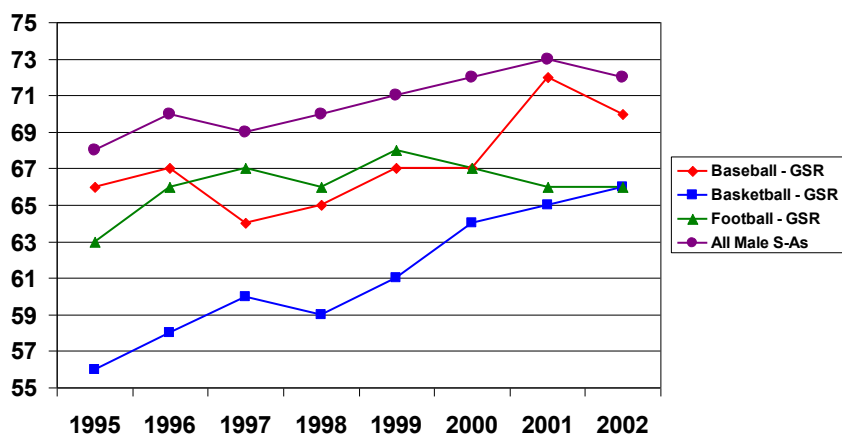
Graduation Success Rates of All Student-Athletes at Division I Institutions by Gender



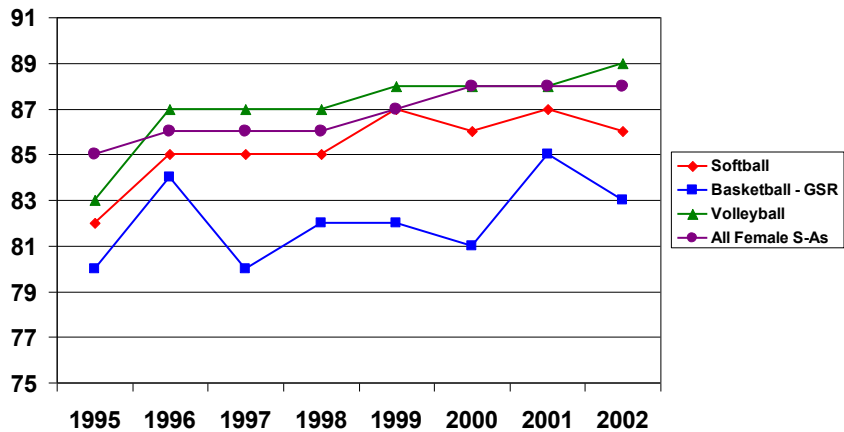
Graduation Success Rates of All Student-Athletes Division I Institutions by Ethnicity



Eight-Year Trends in GSR for Division I Men's Basketball and Baseball, and FBS Football 1995-2002



Eight-Year Trends in GSR for Division I Women's Basketball, Softball and Volleyball 1995-2002



Trends in Federal Graduation Rates



Federal Graduation Rate Trends for Division I Men's Sports
Four-Class Averages for 1998-01 Cohorts vs. 1999-02 Cohorts

SPORT	Four-Class Average 1998-01 Cohorts	Four-Class Average 1999-02 Cohorts
Baseball	47%	47%
Basketball	46%	48%
Cross Country/Track	60%	60%
Fencing	78%	73%
Football (FBS)	55%	55%
Football (FCS)	54%	54%
Golf	61%	62%
Gymnastics	70%	70%
Ice Hockey	64%	63%
Lacrosse	74%	72%
Rifle	60%	58%
Skiing	73%	78%
Soccer	58%	58%
Swimming	69%	70%
Tennis	64%	65%
Volleyball	69%	67%
Water Polo	71%	72%
Wrestling	54%	54%

Federal Graduation Rate Trends for Division I Women's Sports
Four-Class Averages for 1998-01 Cohorts vs. 1999-02 Cohorts

SPORT	Four-Class Average 1998-01 Cohorts	Four-Class Average 1999-02 Cohorts
Basketball	64%	64%
Bowling	57%	58%
Crew	75%	77%
Cross Country/Track	70%	70%
Fencing	81%	84%
Field Hockey	81%	82%
Golf	71%	72%
Gymnastics	85%	83%
Ice Hockey	74%	74%
Lacrosse	84%	84%
Rifle	64%	70%
Skiing	73%	75%
Soccer	71%	72%
Softball	70%	70%
Swimming	75%	75%
Tennis	70%	70%
Volleyball	71%	70%
Water Polo	76%	76%

Federal Graduation Rate Trends for Division I Men's Sports
1995 to 2002 Entering Cohorts

SPORT	1995	1996	1997	1998	1999	2000	2001	2002
Baseball	49.5%	48.1%	44.6%	45.4%	46.8%	45.0%	49.2%	48.8%
Basketball	42.9%	44.3%	44.6%	43.4%	46.6%	46.2%	49.1%	50.8%
X- Country/Track	59.1%	58.6%	59.6%	59.5%	61.0%	59.7%	59.7%	58.6%
Fencing	100%	55.6%	60.0%	80.0%	80.0%	62.5%	84.6%	64.3%
Football (FBS)	53.5%	54.3%	57.1%	55.0%	55.4%	54.9%	56.0%	54.8%
Football (FCS)	51.3%	53.8%	54.1%	54.1%	52.9%	54.6%	52.0%	56.5%
Golf	60.7%	63.5%	57.7%	59.6%	64.0%	58.3%	61.0%	66.3%
Gymnastics	57.5%	69.2%	80.0%	77.5%	66.7%	61.3%	73.9%	83.3%
Ice Hockey	59.6%	67.3%	71.3%	61.3%	74.6%	63.2%	58.0%	58.5%
Lacrosse	75.4%	76.1%	79.9%	75.3%	73.8%	71.6%	77.3%	67.7%
Rifle	68.4%	52.0%	63.2%	65.2%	68.4%	47.1%	57.1%	60.0%
Skiing	61.5%	70.0%	77.8%	69.2%	78.6%	71.4%	71.4%	90.0%
Soccer	55.7%	55.4%	56.5%	60.7%	58.6%	56.9%	56.7%	57.9%
Swimming	66.0%	67.4%	69.2%	64.7%	70.3%	67.5%	71.6%	69.5%
Tennis	65.5%	64.5%	60.1%	63.6%	65.0%	62.5%	63.7%	68.3%
Volleyball	53.6%	57.1%	56.0%	73.2%	66.0%	69.0%	71.1%	59.6%
Water Polo	89.5%	72.4%	77.3%	66.7%	68.2%	66.7%	86.4%	70.6%
Wrestling	43.4%	55.1%	49.3%	54.6%	53.6%	53.1%	51.4%	57.2%
Overall	54.1%	55.1%	55.1%	54.9%	56.1%	54.8%	56.0%	56.8%

Federal Graduation Rate Trends for Division I Women's Sports
1995 to 2002 Entering Cohorts

SPORT	1995	1996	1997	1998	1999	2000	2001	2002
Basketball	64.3%	66.6%	65.1%	63.5%	64.2%	63.7%	65.1%	64.2%
Bowling	100%	100%	100%	43.8%	57.1%	52.4%	68.0%	54.2%
Crew	84.4%	86.7%	74.2%	72.0%	74.3%	72.1%	80.5%	79.6%
X-Country/Track	66.1%	68.9%	66.1%	68.8%	68.7%	68.3%	71.8%	70.7%
Fencing	72.7%	66.7%	83.3%	84.6%	81.8%	83.3%	76.2%	100%
Field Hockey	82.3%	81.8%	80.2%	79.9%	85.1%	81.3%	79.3%	83.6%
Golf	66.3%	69.6%	65.5%	68.3%	73.3%	69.2%	71.6%	73.8%
Gymnastics	84.3%	87.3%	81.9%	89.8%	86.1%	84.2%	79.5%	82.9%
Ice Hockey	75.0%	81.3%	70.0%	64.6%	74.1%	82.1%	73.8%	67.6%
Lacrosse	82.4%	77.7%	83.4%	83.3%	84.5%	82.2%	86.4%	82.5%
Rifle	50.0%	87.5%	72.7%	47.4%	76.9%	84.6%	53.8%	67.9%
Skiing	64.7%	75.0%	77.8%	68.8%	85.7%	86.7%	57.9%	76.5%
Soccer	70.4%	69.2%	70.7%	69.1%	71.7%	72.5%	71.2%	70.8%
Softball	68.4%	68.8%	70.0%	71.1%	70.0%	69.3%	69.3%	69.7%
Swimming	77.0%	75.4%	76.1%	73.5%	73.7%	76.5%	74.6%	75.9%
Tennis	67.9%	71.0%	68.8%	71.3%	70.2%	69.2%	68.3%	70.9%
Volleyball	65.4%	69.2%	69.5%	72.5%	69.7%	71.4%	69.7%	69.1%
Water Polo	93.8%	76.5%	82.5%	75.6%	74.0%	76.7%	75.3%	79.1%
Overall	69.3%	69.6%	69.1%	69.8%	71.3%	71.2%	71.6%	71.8%

Eight-Year Trends in Federal Rate and GSR for Student Body and Student-Athletes in Division I 1995-2002

