

DOCUMENT RESUME

ED 475 419

HE 035 752

TITLE Participation and Success Forecast, 2003-2015: Texas Institutions of Higher Education.

INSTITUTION Texas State Higher Education Coordinating Board, Austin.

PUB DATE 2003-01-00

NOTE 57p.; Formerly Study Paper 27, "Enrollment Forecast." For the enrollment projections for 2000-2015, see ED 465 317.

AVAILABLE FROM Texas Higher Education Coordinating Board (THECB), P.O. Box 12788, Austin, TX 78711-2788. For full text: <http://www.thecb.state.tx.us/DataAndStatistics/>.

PUB TYPE Numerical/Quantitative Data (110) -- Reports - Research (143)

EDRS PRICE EDRS Price MF01/PC03 Plus Postage.

DESCRIPTORS *College Graduates; College Students; *Degrees (Academic); Educational Attainment; *Enrollment Projections; Higher Education

IDENTIFIERS *Texas

ABSTRACT

The Texas Higher Education Forecasting Board began forecasting enrollments in 1979, and the methodology has remained relatively unchanged. However, the 2003 forecast includes a new section that uses the enrollment (participation) forecast to predict statewide degree production in bachelor's and associate's degrees and certificates (success). The report projects student participation and success, based on current trends, to 2015. Participation in Texas institutions of higher education is expected to reach almost 1.17 million students by 2005, for a growth rate of approximately 7.6% over the 3 years. Then, from 2005 to 2010, participation is expected to increase by 5.7% to provide an additional 67,000 students. Growth is expected to increase by an additional 44,000 students by 2015. In all, Texas higher education institutions are expected to enroll nearly 1.3 million students by 2015. Texas public universities are expected to enroll 517,300 students by 2015, and it is expected that Texas public two-year colleges will enroll more than 631,400 students by 2015. Projections indicate that Texas will fall short, however, of awarding the 59,000 associate's degrees and certificates and the 104,000 bachelor's degrees to achieve the "Closing the Gaps by 20015" success goal. An addendum discusses the "Closing the Gaps" report, and an appendix discusses fall continuing education enrollment at public two-year colleges. (Contains 15 tables and 6 graphs.) (SLD)

ED 475 419

Participation and Success Forecast, 2003-2015*

Texas Institutions of Higher Education

Texas Higher Education Coordinating Board
Division of Planning and Information Resources
P.O. Box 12788
Austin, TX 78711
(512) 427-6101
<http://www.thecb.state.tx.us>

PERMISSION TO REPRODUCE AND
DISSEMINATE THIS MATERIAL HAS
BEEN GRANTED BY

D. Gardner

TO THE EDUCATIONAL RESOURCES
INFORMATION CENTER (ERIC)

1

January 2003

U.S. DEPARTMENT OF EDUCATION
Office of Educational Research and Improvement
EDUCATIONAL RESOURCES INFORMATION
CENTER (ERIC)

☒ This document has been reproduced as
received from the person or organization
originating it.

☐ Minor changes have been made to
improve reproduction quality.

• Points of view or opinions stated in this
document do not necessarily represent
official OERI position or policy.

* Formerly Study Paper 27, *Enrollment Forecast*

BEST COPY AVAILABLE

The Texas Higher Education Coordinating Board

Board Member	Dates of Term	Hometown
Ms. Pamela P. Willeford, <i>Chair</i>	1997-2003	Austin
Dr. Martin Basaldua MD, <i>Vice Chair</i>	1997-2003	Houston
Mr. Raul B. Fernandez, <i>Secretary of the Board</i>	1997-2003	San Antonio
Mr. Neal W. Adams	2001-2007	Bedford
Dr. Ricardo G. Cigarroa MD	1999-2005	Laredo
Gen. Marc Cisneros (ret.)	2001-2007	Corpus Christi
Mr. Kevin P. Eltife	1997-2003	Tyler
Mr. Jerry Farrington	2001-2007	Dallas
Ms. Cathy Obriotti Green	1999-2005	San Antonio
Mr. Gerry Griffin	1999-2005	Hunt
Mr. Carey Hobbs	1999-2005	Waco
Ms. Adair Margo	1997-2003	El Paso
Ms. Lorraine Perryman	2001-2007	Odessa
Mr. Curtis E. Ransom	2001-2007	Dallas
Dr. Hector de J. Ruiz PhD	1999-2005	Austin
Mr. Robert W. Shepard	1997-2003	Harlingen
Ms. Windy Sitton	2001-2007	Lubbock
Mr. Terdema L. Ussery II	1999-2005	Dallas

Mission of the Coordinating Board

The Texas Higher Education Coordinating Board's mission is to work with the Legislature, Governor, governing boards, higher education institutions and other entities to provide the people of Texas the widest access to higher education of the highest quality in the most efficient manner.

Philosophy of the Coordinating Board

The Texas Higher Education Coordinating Board will promote access to quality higher education across the state with the conviction that access without quality is mediocrity and that quality without access is unacceptable. The Board will be open, ethical, responsive, and committed to public service. The Board will approach its work with a sense of purpose and responsibility to the people of Texas and is committed to the best use of public monies. The Coordinating Board will engage in actions that add value to Texas and to higher education; the agency will avoid efforts that do not add value or that are duplicated by other entities.

Foreword

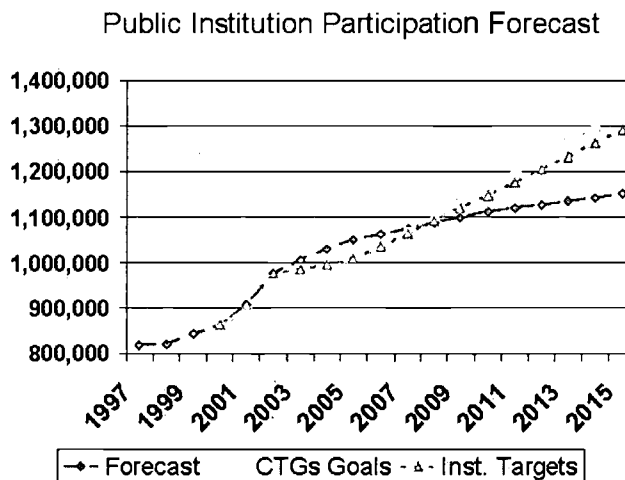
The Coordinating Board began forecasting enrollments in 1979, and the methodology has remained relatively unchanged. However, the 2003 forecast features a new title – *Participation and Success Forecast, 2003-2015* – (replacing the former Enrollment Forecast, Study Paper 27) and includes a new section that uses the enrollment (participation) forecast to predict statewide degree production in bachelor's and associate's degrees and certificates (success).

Participation Forecast

Information about enrollment trends and expectations, always fundamental to higher education planning, is even more critical in times of limited resources and growing numbers of students. The methodology employed in this participation forecast is based on past enrollment and population trends related to geographic location, age, and race/ethnicity. The focus on current trends, however, does not reflect possible changes in the rate of high school graduation, increased participation by racial/ethnic groups, or changes in local policies. For that reason, the forecasts are conservative.

Several other Coordinating Board efforts study enrollments in other ways. For example, in October 2000, the Coordinating Board developed a new higher education plan called *Closing the Gaps by 2015*. The plan established a participation goal of enrolling an additional 500,000 students by 2015 to ensure that

Texas educates more of its people. In an effort to determine how to meet these goals, the Coordinating Board asked each public institution to submit ambitious individual institution-level targets for participation (Institutional Targets). This graph demonstrates the difference between the forecasted enrollment noted in this document, *Closing the Gaps* (CTG) goals, and *Closing the Gaps* targets set by institutions.

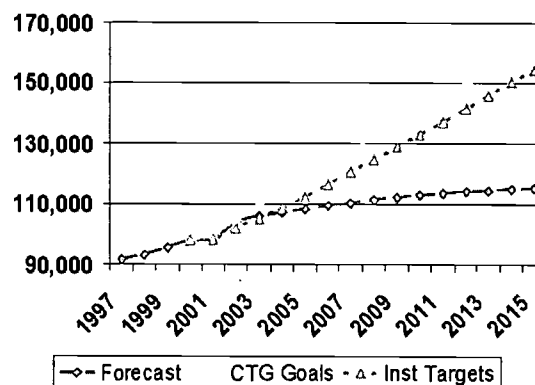


Success Forecast

The success forecast is based on the past ratio of degrees and certificates awarded to the enrollment. The ratio trend is applied to the projected enrollment by public sector to forecast the number of certificates and associate, and bachelor degrees that will be awarded in public higher education. This forecast does not reflect possible changes in time-to-degree patterns or demographics during the forecast period.

Closing the Gaps established a success goal that requires doubling the number of degrees and certificates awarded annually. As with the participation goal, public institutions were asked to set ambitious targets for the number of degrees and certificates they would be awarding. The graph illustrates the difference between the success forecast presented in this document, the *Closing the Gaps* goals, and the *Closing the Gaps* targets set by institutions.

Public Institution Forecast
Certificate, Associate and Bachelor Degrees



Conclusion

The *Participation and Success Forecast* projects to 2015 the level of student participation and success, based on current trends. Comparisons among these projections, state goals, and targets set by institutions indicate that Texas is not yet on track to meet its goals.

Table of Contents

Foreword	i
Participation in Texas Public Colleges and Universities to 2015.....	1
Texas Public College and University Participation Forecasts	21
Participation Forecast – Texas Independent Colleges and Universities	40
Success in Texas Public Colleges and Universities	42
 Addendum	
<i>Closing the Gaps in Participation and Success</i>	44
 Appendix A	
Fall Continuing Education Enrollment Public Two-year Colleges.....	A-1
 List of Tables	
1A. Fall Headcount Participation Forecasts – Texas Institutions of Higher Education.....	3
1B. Forecasted Changes in Fall Headcount Participation	3
2. Participation Projections by Region – Texas Public Institutions of Higher Education.....	5
3. Fall Headcount Participation Forecasts – Texas Public Universities	10
4. Forecasted Changes in Fall Headcount Participation – Public Universities	12
5. Fall Headcount Participation Forecasts – Two-year Colleges	14
6. Forecasted Changes in Fall Headcount Participation – Public Two-year Colleges	17
7A. Fall In-State Participation by Age and Race/Ethnicity – Public Universities	23
7B. In-State and Nonresident Enrollment for Public Universities	23
8A. Fall In-State Enrollment by Age and Race/Ethnicity – Public Two-year Colleges	24
8B. In-State and Nonresident Participation for Public Two-year Colleges	24
9. Texas Statewide Population by Race/Ethnicity	26
10. In-State Participation Alternative Forecasts – Public Universities	28
11. In-State Participation Alternative Forecasts – Public Two-year Colleges	29
12. In-State Participation– Public Universities Comparison of Preliminary to Forecast In-State Participation for 2002	32
13. In-State Participation – Public Two-year Colleges Comparison of Preliminary to Forecast In-State Participation for 2002	33
14. Nonresident Participation Ratios – Public Universities.....	36
15. Nonresident Participation Ration – Public Two-year Colleges	37
16. Adjustments to Draft Participation Forecasts Based on Local Conditions	39
17. Texas Independent Colleges and Universities Participation.....	40

18.	Texas Independent Colleges and Universities Forecast	41
19.	Historical Ratios	42
20.	Trend Ratios.....	43
21.	Success Forecast.....	43
A-1.	Fall Continuing Education Participation – Public Two-year Colleges	A-2

List of Graphs

Figure 1.	Texas Higher Education Coordinating Board Ten Regions	4
Figure 2.	Participation Forecast Development Process	20
Figure 3.	Public Two-Year Institution Participation	44
Figure 4.	Public Two-Year Institution Associates and Certificates.....	44
Figure 5.	Public University Participation	45
Figure 6.	Public University Bachelor's Degrees.....	45

Participation in Texas' Public Colleges and Universities to 2015

Based on current population projections and recent patterns in college and university attendance, participation in Texas' institutions of higher education is expected to reach almost 1.17 million students by 2005. This figure represents an increase of 83,000 students over preliminary 2002 participation, producing a growth rate of approximately 7.6 percent during the three-year period. During the ensuing five-year period—from 2005-2010—participation is expected to increase by 5.7 percent to provide an additional 67,000 students. For the following five-year period—from 2010 to 2015—the growth is expected to increase by an additional 44,00 students. As a result of these increases, Texas higher education institutions are expected to enroll nearly 1.3 million students by 2015.

For public universities, participation is expected to increase to approximately 480,000 students by 2005. This increase of 23,400 students over preliminary 2002 participation is expected from a projected growth rate of 1.7 percent annually. During the ensuing five-year period—from 2005 to 2010—participation is expected to increase at about 1 percent annually to provide nearly 22,400 additional students. For the following five-year period—from 2010 to 2015—the growth is expected to continue at .6 percent annually to give these institutions 15,500 additional students. As a result of these increases, Texas public universities are expected to enroll 517,300 students by 2015.

For public two-year colleges, participation is expected to increase to approximately 568,200 students by 2005. This increase of 51,385 students over preliminary 2002 participation is expected from a projected growth rate of 3.3 percent annually. During the ensuing five-year period—from 2005 to 2010—participation is expected to increase at about 1.3 percent annually to provide nearly 38,000 additional students. For the following five-year period—from 2010 to 2015—the growth is expected to continue at .8 percent annually to give these institutions 25,300 additional students. As a result of these increases, Texas public two-year colleges are expected to enroll more than 631,400 students by 2015.

The following points should be considered when reviewing the forecasts:

- The forecast model is influenced strongly by historical in-state participation patterns at each institution and projected population changes by county. Therefore, these forecasts may not accurately reflect future participation because institutions may recruit students from different areas, the demographics of geographic recruitment bases may change, or institutions may change or impose enrollment limitations.

- Participation may be affected by the Texas economy. Participation has usually expanded in times of increasing unemployment, in part because students want to prepare for better jobs. The availability of financial aid also influences students' decisions to enter or return to college.
- As mentioned previously, Texas' independent institutions widely contribute to providing higher education opportunities to citizens of this state, but their data is not reflected in this report.

Table 1A
Fall Headcount Enrollment Forecasts – Texas Institutions of Higher Education

Institutions	Actual 2000	Actual 2001	Preliminary 2002	2003	2004	Forecast 2005	2010	2015
Public Universities	414,626	430,770	455,997	466,965	474,797	479,442	501,828	517,286
Public Two-Year Colleges	447,998	478,313	516,810	540,285	555,122	568,195	606,195	631,401
Independent Colleges and Universities	108,315	111,929	114,402	117,877	120,456	122,666	129,366	132,580
Total, All Institutions	970,939	1,021,012	1,087,209	1,125,127	1,150,375	1,170,304	1,237,345	1,281,267

Table 1B
Forecasted Changes in Fall Headcount Enrollment

Institutions	2002-2005		2005-2010		2010-2015	
	Number	Percent	Number	Percent	Number	Percent
Public Universities	23,445	5.1%	22,385	4.7%	15,458	3.1%
Public Two-Year Colleges	51,385	9.9%	37,955	6.7%	25,250	4.1%
Independent Colleges and Universities	8,264	7.2%	6,700	5.5%	3,214	2.5%
Total, All Institutions	83,095	7.6%	67,041	5.7%	43,922	3.5%

Figure 1
Texas Higher Education Coordinating Board
Ten Regions

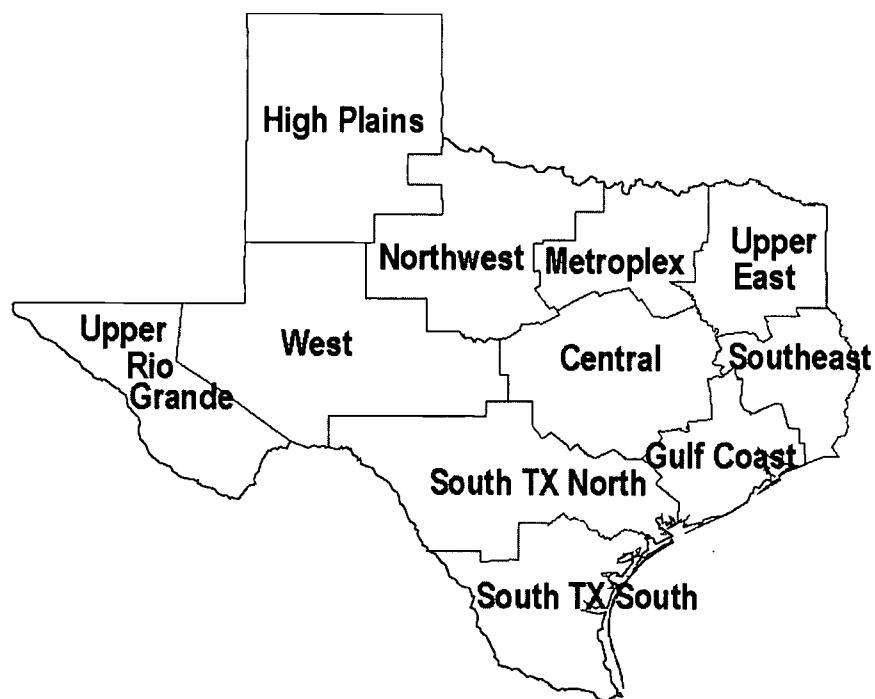


Table 2
Enrollment Projections by Region
Texas Public Institutions of Higher Education

	Actual 2000	Actual 2001	Preliminary 2002	2003	2004	2005	2010	2015
Central Texas Region								
Southwest Texas State University	22,423	23,517	25,041	26,906	27,836	28,860	30,567	30,848
Texas A&M University	44,026	44,618	45,083	45,000	45,000	45,000	45,000	45,000
The University of Texas at Austin	49,996	50,616	52,273	52,000	51,000	50,000	48,000	48,000
	116,445	118,751	122,397	123,906	123,836	123,860	123,567	123,848
Austin Community College								
Blinn College	25,853	27,577	29,166	30,060	30,602	31,029	32,544	34,429
Central Texas College District	12,025	12,686	13,809	14,105	14,354	14,682	14,926	14,697
Hill College	6,650	7,231	7,817	8,056	8,117	8,199	8,692	9,225
McLennan Community College	2,506	2,694	2,930	3,172	3,312	3,465	3,770	3,821
Temple College	5,721	6,110	6,565	6,713	6,876	6,931	6,949	6,911
Texas State Technical College Waco	3,381	3,579	3,676	3,817	4,031	4,148	4,473	4,678
	3,928	4,068	4,237	4,316	4,390	4,449	4,559	4,515
	60,064	63,945	68,200	70,239	71,683	72,902	75,914	78,277
Central Texas Regional Totals	176,509	182,696	190,597	194,145	195,518	196,761	199,481	202,125
Gulf Coast Region								
Prairie View A&M University	6,609	6,747	7,262	7,416	7,564	7,717	8,312	8,412
Sam Houston State University	12,348	12,985	13,079	13,565	13,899	14,183	14,841	14,792
Texas A&M University at Galveston	1,363	1,366	1,576	1,646	1,669	1,689	1,703	1,640
Texas Southern University	6,886	8,119	9,739	10,128	10,512	10,707	11,975	12,262
University of Houston	32,123	33,007	34,443	35,186	35,797	33,762	34,614	35,488
University of Houston - Clear Lake	7,580	7,738	7,754	7,928	7,977	8,313	9,243	10,254
University of Houston - Downtown	8,951	9,704	10,528	10,927	11,088	11,237	12,169	13,994
	75,860	79,666	84,381	86,794	88,506	87,609	92,857	96,840
Alvin Community College								
Brazosport College	3,531	3,667	4,174	4,299	4,382	4,464	4,749	4,933
College of the Mainland	3,855	4,022	4,099	4,177	4,249	4,327	4,629	4,869
Galveston College	3,159	3,346	3,627	3,800	3,950	4,065	4,180	4,335
Houston Community College	2,245	2,207	2,302	2,302	2,339	2,371	2,485	2,507
	33,509	34,714	34,926	35,212	35,805	36,329	38,781	40,638

	Actual 2000	Actual 2001	Preliminary 2002	Total Projections				
				2003	2004	2005	2010	2015
Lee College	6,170	6,226	6,553	6,587	6,674	6,747	7,151	7,468
NHMCC Cy-Fair College**	-	-	3,161	6,260	7,500	9,004	12,000	14,000
NHMCC Kingwood	4,568	5,302	5,976	6,345	6,513	6,688	6,966	7,073
NHMCC Montgomery	5,316	5,776	6,257	6,599	6,826	7,154	8,253	8,970
NHMCC North Harris	9,118	9,972	10,786	10,956	11,189	11,312	11,948	12,442
NHMCC Tomball**	5,902	8,336	8,132	8,393	8,680	8,962	9,890	9,981
San Jacinto College Central Campus	10,816	11,139	11,259	11,843	11,942	12,028	12,341	12,460
San Jacinto College North Campus	4,937	4,976	5,036	5,329	5,381	5,437	5,708	5,891
San Jacinto College South Campus	6,238	6,632	7,229	7,575	7,666	7,745	8,038	8,186
Wharton County Junior College	4,571	5,281	5,775	6,575	6,834	7,076	7,814	7,810
	103,935	111,596	119,292	126,252	129,930	133,708	144,934	151,563
Gulf Coast Regional Totals	179,795	191,262	203,673	213,046	218,436	221,316	237,790	248,403
High Plains Region								
Texas Tech University	24,199	25,416	27,569	28,269	28,769	29,169	29,800	30,300
West Texas A&M University	6,775	6,675	6,814	6,955	7,116	7,223	7,327	7,139
	30,974	32,091	34,383	35,224	35,885	36,392	37,127	37,439
Amarillo College	8,181	8,499	9,144	9,472	9,571	9,622	9,850	10,012
Clarendon College	1,001	880	971	991	996	1,017	1,043	978
Frank Phillips College	1,153	1,242	1,336	1,401	1,398	1,397	1,380	1,324
South Plains College	7,432	8,512	8,994	9,412	9,615	9,716	9,599	9,381
	17,767	19,133	20,445	21,275	21,581	21,752	21,871	21,694
High Plains Regional Totals	48,741	51,224	54,828	56,499	57,466	58,144	58,999	59,133
Metroplex Region								
Tarleton State University	7,545	8,024	8,334	8,664	8,875	9,058	9,489	9,548
Texas A&M - Commerce	7,483	7,934	8,488	8,598	8,729	8,856	9,326	9,564
Texas Woman's University	8,404	7,887	8,736	8,976	9,216	9,441	10,537	11,434
The University of Texas at Arlington	20,424	21,180	23,821	24,464	24,920	25,237	26,748	27,530
The University of Texas at Dallas	10,945	12,455	13,219	13,619	14,112	14,411	15,405	16,242
University of North Texas	27,054	27,858	30,193	30,758	31,297	31,768	33,748	34,928
	81,855	85,338	92,791	95,080	97,148	98,772	105,254	109,245
Collin County Community College	12,704	14,179	15,767	16,775	17,389	18,063	21,530	24,784
DCCCD Brookhaven College	7,687	8,306	9,115	9,501	9,887	10,273	10,825	11,477

	Actual 2000	Actual 2001	Preliminary 2002	Total Projections				
				2003	2004	2005	2010	2015
DCCCD Cedar Valley	2,799	2,913	4,006	4,195	4,342	4,491	4,779	4,982
DCCCD Eastfield College	7,643	8,462	9,070	9,515	9,973	10,232	10,985	11,505
DCCCD El Centro College	4,366	4,763	5,675	6,192	6,442	6,695	7,264	7,846
DCCCD Mountain View College	4,949	5,729	6,266	6,774	7,180	7,467	8,214	9,035
DCCCD North Lake College	6,764	7,338	8,382	8,862	9,088	9,311	10,000	11,000
DCCCD Richland College	11,958	12,680	13,501	13,915	14,257	14,500	15,144	15,640
Grayson County College	3,260	3,470	3,574	3,664	3,688	3,712	3,746	3,628
Navarro College	3,989	4,411	4,970	5,403	5,673	5,849	6,310	6,243
North Central Texas College	4,794	5,182	6,166	6,404	6,517	6,612	7,174	7,653
Tarrant County Northeast Campus	9,315	10,035	11,192	11,576	11,952	12,221	13,044	13,712
Tarrant County Northwest Campus	4,199	4,648	5,182	5,447	5,601	5,753	6,221	6,642
Tarrant County South Campus	7,062	7,337	8,097	8,452	8,747	9,044	9,620	10,199
Tarrant County Southeast Campus	7,293	7,797	8,424	8,755	9,039	9,319	9,796	10,246
Weatherford College	2,751	3,136	3,605	3,949	4,148	4,337	4,545	4,507
	101,533	110,386	122,992	129,378	133,924	137,881	149,199	159,100
Metroplex Regional Totals	183,388	195,724	215,783	224,457	231,072	236,652	254,453	268,346
Northwest Texas Region								
Midwestern State University	5,812	5,960	6,160	6,274	6,369	6,429	6,529	6,420
Cisco Junior College	2,639	2,716	2,965	3,055	3,122	3,123	3,092	2,980
Ranger Junior College	847	840	894	872	890	906	904	862
Texas State Technical College West Texas	1,563	1,607	1,661	1,702	1,729	1,752	1,759	1,678
Vernon Regional Junior College	2,095	2,269	2,526	2,684	2,735	2,790	2,841	2,826
Western Texas College	1,176	1,323	1,652	1,770	1,859	1,863	1,828	1,735
	8,320	8,755	9,698	10,083	10,334	10,434	10,424	10,081
Northwest Texas Regional Totals	14,132	14,715	15,858	16,357	16,704	16,863	16,953	16,500
South Texas Region								
Sul Ross Rio Grande College	828	810	905	888	906	927	1,036	1,141
Texas A&M - Corpus Christi	6,823	7,369	7,607	7,856	8,102	8,322	8,824	9,059
Texas A&M - Kingsville	5,942	6,148	6,556	6,725	6,888	7,033	7,482	7,645
Texas A&M International	3,038	3,372	3,743	3,915	4,050	4,174	4,837	5,433
The University of Texas at San Antonio	18,830	19,883	22,016	22,659	23,159	23,596	26,017	28,506
The University of Texas Brownsville	3,157	3,494	3,545	3,904	4,005	4,108	4,614	5,055
The University of Texas Pan American	12,760	13,640	14,391	15,118	15,776	16,626	19,032	20,841

	Actual 2000	Actual 2001	Preliminary 2002	Total Projections					
				2003	2004	2005	2010	2015	
University of Houston - Victoria	1,698	1,927	2,183	2,226	2,254	2,287	2,516	3,005	
	53,076	56,643	60,946	63,292	65,141	67,071	74,358	80,684	
Alamo Northwest Vista	4,056	5,425	7,076	7,638	8,198	8,448	8,834	8,983	
Alamo Palo Alto College	6,370	6,688	6,980	7,285	7,480	7,665	8,362	8,561	
Alamo San Antonio College	20,490	21,303	21,473	21,798	22,041	22,246	23,172	23,646	
Alamo St. Philip's College	8,286	8,628	9,206	9,514	9,639	9,755	10,332	10,703	
Coastal Bend College	3,026	3,095	3,479	3,573	3,612	3,652	3,750	3,751	
Del Mar College	9,683	10,246	11,216	11,848	12,047	12,210	12,751	13,005	
Laredo Community College	7,284	7,469	7,765	8,073	8,357	8,613	9,984	11,095	
South Texas Community College	11,183	12,443	13,720	14,710	15,732	16,485	19,605	22,186	
Southwest Texas Junior College	3,716	3,723	4,333	3,887	3,982	4,084	4,458	4,558	
Texas Southmost College	7,245	7,210	7,777	8,087	8,334	8,583	9,563	10,173	
Texas State Technical College Harlingen	3,266	3,842	4,217	4,662	4,986	5,415	6,147	6,898	
Victoria College, The	4,021	4,006	4,029	4,194	4,291	4,368	4,430	4,329	
	88,626	94,078	101,271	105,269	108,699	111,524	121,388	127,887	
South Texas Regional Totals	141,702	150,721	162,217	168,561	173,840	178,596	195,746	208,571	
Southeast Texas Region									
Lamar University	8,568	8,968	9,803	9,914	10,001	10,082	10,051	9,827	
Stephen F. Austin State University	11,453	11,525	11,356	11,492	11,690	11,851	12,163	11,900	
	20,021	20,493	21,159	21,406	21,691	21,933	22,214	21,728	
Angelina	4,376	4,659	4,976	5,020	5,050	5,083	5,161	5,185	
Lamar Institute of Technology	2,349	2,448	2,422	2,532	2,565	2,594	2,634	2,610	
Lamar-Orange	1,939	2,020	1,977	2,083	2,095	2,107	2,149	2,105	
Lamar-Port Arthur	2,508	2,497	2,444	2,449	2,459	2,470	2,501	2,499	
	11,172	11,624	11,819	12,084	12,169	12,254	12,444	12,400	
Southeast Texas Regional Totals	31,193	32,117	32,978	33,490	33,860	34,187	34,658	34,128	
Upper East Texas Region									
Texas A&M - Texarkana	1,195	1,219	1,367	1,422	1,451	1,454	1,491	1,476	
The University of Texas at Tyler	3,592	3,732	4,253	4,454	4,663	4,907	5,303	5,762	
	4,787	4,951	5,620	5,876	6,114	6,362	6,794	7,238	
Kilgore College	3,872	4,026	4,593	4,671	4,750	4,812	4,750	4,585	

	Actual 2000	Actual 2001	Preliminary 2002	2003	2004	2005	2010	2015
Actual								
Total Projections								
Northeast Texas Community College	1,990	2,203	2,423	2,561	2,593	2,620	2,629	2,575
Panola Junior College	1,422	1,492	1,694	1,692	1,705	1,717	1,685	1,619
Paris Junior College	2,936	3,278	3,659	3,746	3,779	3,813	3,841	3,768
Texarkana College	3,394	3,526	3,538	3,625	3,630	3,618	3,532	3,326
Texas State Technical College Marshall	511	595	606	612	621	626	622	603
Trinity Valley Comm College	4,588	4,604	5,214	5,406	5,495	5,577	5,795	5,856
Tyler Junior College	8,240	8,451	8,947	9,302	9,395	9,461	9,505	9,339
	26,953	28,175	30,674	31,616	31,968	32,245	32,361	31,672
Upper East Texas Regional Totals	31,740	33,126	36,294	37,492	38,083	38,607	39,154	38,910
Upper Rio Grande Region								
Sul Ross State University	2,010	1,992	1,955	2,034	2,085	2,139	2,249	2,246
The University of Texas at El Paso	15,224	16,220	17,232	17,903	18,532	19,130	20,998	22,043
	17,234	18,212	19,187	19,937	20,618	21,269	23,247	24,290
El Paso Community College Dist	17,747	18,356	19,631	20,878	21,416	21,927	24,145	25,569
Upper Rio Grande Regional Totals	34,981	36,568	38,818	40,815	42,033	43,196	47,392	49,858
West Texas Region								
Angelo State University	6,290	6,256	6,268	6,320	6,484	6,593	6,468	6,049
The University of Texas of the Permian Basin	2,272	2,409	2,705	2,856	3,006	3,153	3,413	3,504
	8,562	8,665	8,973	9,176	9,491	9,746	9,881	9,553
Howard College at Big Spring	2,337	2,539	2,655	2,668	2,686	2,685	2,633	2,515
Midland College	4,841	5,060	5,049	5,185	5,228	5,256	5,115	4,863
Odessa College	4,568	4,545	4,949	5,223	5,366	5,487	5,580	5,640
Southwest Collegiate Institute	135	121	135	135	138	140	143	140
	11,881	12,265	12,788	13,211	13,418	13,568	13,471	13,157
West Texas Regional Totals	20,443	20,930	21,761	22,387	22,908	23,314	23,352	22,710

** NHMCCD Cy-Fair College opened in 2003, affecting enrollment at the NHMCCD Tomball campus.

Table 3
Fall Headcount Enrollment Forecasts—Texas Public Universities

	Actual 2000	Actual 2001	Preliminary 2002	2003	2004	2005	2010	2015
Angelo State University	6,290	6,256	6,268	6,320	6,484	6,593	6,468	6,049
Lamar University	8,568	8,968	9,803	9,914	10,001	10,082	10,051	9,827
Midwestern State University	5,812	5,960	6,160	6,274	6,369	6,429	6,529	6,420
Prairie View A&M University	6,609	6,747	7,262	7,416	7,564	7,717	8,312	8,412
Sam Houston State University	12,348	12,985	13,079	13,565	13,899	14,183	14,841	14,792
Southwest Texas State University	22,423	23,517	25,041	26,906	27,836	28,860	30,567	30,848
Stephen F. Austin State University	11,453	11,525	11,356	11,492	11,690	11,851	12,163	11,900
Sul Ross State University	2,010	1,992	1,955	2,034	2,085	2,139	2,249	2,246
Sul Ross Rio Grande College	828	810	905	888	906	927	1,036	1,141
Tarleton State University	7,545	8,024	8,334	8,664	8,875	9,058	9,489	9,548
Texas A&M University at Galveston	1,363	1,366	1,576	1,646	1,669	1,689	1,703	1,640
Texas A&M - Commerce	7,483	7,934	8,488	8,598	8,729	8,856	9,326	9,564
Texas A&M - Corpus Christi	6,823	7,369	7,607	7,856	8,102	8,322	8,824	9,059
Texas A&M - Kingsville	5,942	6,148	6,556	6,725	6,888	7,033	7,482	7,645
Texas A&M - Texarkana	1,195	1,219	1,367	1,422	1,451	1,454	1,491	1,476
Texas A&M International	3,038	3,372	3,743	3,915	4,050	4,174	4,837	5,433
Texas A&M University	44,026	44,618	45,083	45,000	45,000	45,000	45,000	45,000
Texas Southern University	6,886	8,119	9,739	10,128	10,512	10,707	11,975	12,262
Texas Tech University	24,199	25,416	27,569	28,269	28,769	29,169	29,800	30,300
Texas Woman's University	8,404	7,887	8,736	8,976	9,216	9,441	10,537	11,434
The University of Texas at Arlington	20,424	21,180	23,821	24,464	24,920	25,237	26,748	27,530
The University of Texas at Austin	49,996	50,616	52,273	52,000	51,000	50,000	48,000	48,000
The University of Texas at Dallas	10,945	12,455	13,219	13,619	14,112	14,411	15,405	16,242
The University of Texas at El Paso	15,224	16,220	17,232	17,903	18,532	19,130	20,998	22,043
The University of Texas at San Antonio	18,830	19,883	22,016	22,659	23,159	23,596	26,017	28,506

	Actual		Preliminary		Projected Enrollments				
	2000	2001	2002	2003	2004	2005	2010	2015	
The University of Texas at Tyler	3,592	3,732	4,253	4,454	4,663	4,907	5,303	5,762	
The University of Texas Brownsville	3,157	3,494	3,545	3,904	4,005	4,108	4,614	5,055	
The University of Texas Pan American	12,760	13,640	14,391	15,118	15,776	16,626	19,032	20,841	
The University of Texas of the Permian Basin	2,272	2,409	2,705	2,856	3,006	3,153	3,413	3,504	
University of Houston	32,123	33,007	34,443	35,186	35,797	33,762	34,614	35,488	
University of Houston - Clear Lake	7,580	7,738	7,754	7,928	7,977	8,313	9,243	10,254	
University of Houston - Downtown	8,951	9,704	10,528	10,927	11,088	11,237	12,169	13,994	
University of Houston - Victoria	1,698	1,927	2,183	2,226	2,254	2,287	2,516	3,005	
University of North Texas	27,054	27,858	30,193	30,758	31,297	31,768	33,748	34,928	
West Texas A&M University	6,775	6,675	6,814	6,955	7,116	7,223	7,327	7,139	
Universities Statewide Totals	414,626	430,770	455,997	466,964	474,797	479,442	501,828	517,286	

Table 4
Forecasted Changes in Fall Headcount Enrollment—Public Universities

	2002-2005		2005-2010		2010-2015	
	Number	Percent	Number	Percent	Number	Percent
Angelo State University	325	5.2%	(125)	-1.9%	(419)	-6.5%
Lamar University	279	2.8%	(31)	-0.3%	(223)	-2.2%
Midwestern State University	269	4.4%	100	1.6%	(109)	-1.7%
Prairie View A&M University	455	6.3%	595	7.7%	100	1.2%
Sam Houston State University	1,104	8.4%	657	4.6%	(49)	-0.3%
Southwest Texas State University	3,819	15.2%	1,707	5.9%	281	0.9%
Stephen F. Austin State University	495	4.4%	312	2.6%	(263)	-2.2%
Sul Ross State University	184	9.4%	110	5.2%	(3)	-0.1%
Sul Ross Rio Grande College	22	2.4%	109	11.8%	105	10.1%
Tarleton State University	724	8.7%	431	4.8%	59	0.6%
Texas A&M University at Galveston	113	7.2%	15	0.9%	(64)	-3.7%
Texas A&M - Commerce	368	4.3%	470	5.3%	238	2.6%
Texas A&M - Corpus Christi	715	9.4%	503	6.0%	234	2.7%
Texas A&M - Kingsville	477	7.3%	450	6.4%	163	2.2%
Texas A&M - Texarkana	87	6.4%	37	2.5%	(15)	-1.0%
Texas A&M International	431	11.5%	663	15.9%	596	12.3%
Texas A&M University	(83)	-0.2%	-	0.0%	-	0.0%
Texas Southern University	968	9.9%	1,268	11.8%	286	2.4%
Texas Tech University	1,600	5.8%	631	2.2%	500	1.7%
Texas Woman's University	705	8.1%	1,097	11.6%	897	8.5%
The University of Texas at Arlington	1,416	5.9%	1,510	6.0%	782	2.9%
The University of Texas at Austin	(2,273)	-4.3%	(2,000)	-4.0%	-	0.0%
The University of Texas at Dallas	1,192	9.0%	994	6.9%	836	5.4%
The University of Texas at El Paso	1,898	11.0%	1,868	9.8%	1,045	5.0%
The University of Texas at San Antonio	1,580	7.2%	2,421	10.3%	2,489	9.6%
The University of Texas at Tyler	654	15.4%	395	8.1%	459	8.7%
The University of Texas Brownsville	563	15.9%	506	12.3%	441	9.6%

	2002-2005		2005-2010		2010-2015	
	Number	Percent	Number	Percent	Number	Percent
The University of Texas Pan American	2,235	15.5%	2,406	14.5%	1,808	9.5%
The University of Texas of the Permian Basin	448	16.6%	259	8.2%	91	2.7%
University of Houston	(681)	-2.0%	852	2.5%	874	2.5%
University of Houston - Clear Lake	559	7.2%	930	11.2%	1,011	10.9%
University of Houston - Downtown	709	6.7%	931	8.3%	1,825	15.0%
University of Houston - Victoria	104	4.8%	229	10.0%	489	19.5%
University of North Texas	1,575	5.2%	1,981	6.2%	1,179	3.5%
West Texas A&M University	409	6.0%	104	1.4%	(188)	-2.6%
Universities Statewide	23,445	5.1%	22,385	4.7%	15,458	3.1%

Table 5
Fall Headcount Participation Forecast—Two-year Colleges

	Actual 2000	Actual 2001	Preliminary 2002	2003	2004	2005	2010	2015
Alamo Northwest Vista	4,056	5,425	7,076	7,638	8,198	8,448	8,834	8,983
Alamo Palo Alto College	6,370	6,688	6,980	7,285	7,480	7,665	8,362	8,561
Alamo San Antonio College	20,490	21,303	21,473	21,798	22,041	22,246	23,172	23,646
Alamo St. Philip's College	8,286	8,628	9,206	9,514	9,639	9,755	10,332	10,703
Alvin Community College	3,531	3,667	4,174	4,299	4,382	4,464	4,749	4,933
Amarillo College	8,181	8,499	9,144	9,472	9,571	9,622	9,850	10,012
Angelina	4,376	4,659	4,976	5,020	5,050	5,083	5,161	5,185
Austin Community College	25,853	27,577	29,166	30,060	30,602	31,029	32,544	34,429
Blinn College	12,025	12,686	13,809	14,105	14,354	14,682	14,926	14,697
Brazosport College	3,855	4,022	4,099	4,177	4,249	4,327	4,629	4,869
Central Texas College District	6,650	7,231	7,817	8,056	8,117	8,199	8,692	9,225
Cisco Junior College	2,639	2,716	2,965	3,055	3,122	3,123	3,092	2,980
Clarendon College	1,001	880	971	991	996	1,017	1,043	978
Coastal Bend College	3,026	3,095	3,479	3,573	3,612	3,652	3,750	3,751
College of the Mainland	3,159	3,346	3,627	3,800	3,950	4,065	4,180	4,335
Collin County Community College	12,704	14,179	15,767	16,775	17,389	18,063	21,530	24,784
DCCCD Brookhaven College	7,687	8,306	9,115	9,501	9,887	10,273	10,825	11,477
DCCCD Cedar Valley	2,799	2,913	4,006	4,195	4,342	4,491	4,779	4,982
DCCCD Eastfield College	7,643	8,462	9,070	9,515	9,973	10,232	10,985	11,505
DCCCD El Centro College	4,366	4,763	5,675	6,192	6,442	6,695	7,264	7,846
DCCCD Mountain View College	4,949	5,729	6,266	6,774	7,180	7,467	8,214	9,035
DCCCD North Lake College	6,764	7,338	8,382	8,862	9,088	9,311	10,000	11,000
DCCCD Richland College	11,958	12,680	13,501	13,915	14,257	14,500	15,144	15,640
Del Mar College	9,683	10,246	11,216	11,848	12,047	12,210	12,751	13,005
El Paso Community College Dist	17,747	18,356	19,631	20,878	21,416	21,927	24,145	25,569
Frank Phillips College	1,153	1,242	1,336	1,401	1,398	1,397	1,380	1,324
Galveston College	2,245	2,207	2,302	2,302	2,339	2,371	2,485	2,507
Grayson County College	3,260	3,470	3,574	3,664	3,688	3,712	3,746	3,628
Hill College	2,506	2,694	2,930	3,172	3,312	3,465	3,770	3,821
Houston Community College	33,509	34,714	34,926	35,212	35,805	36,329	38,781	40,638

	Actual 2000	Actual 2001	Preliminary 2002	Projected Enrollments				
				2003	2004	2005	2010	2015
Howard College at Big Spring	2,337	2,539	2,655	2,668	2,686	2,685	2,633	2,515
Kilgore College	3,872	4,026	4,593	4,671	4,750	4,812	4,750	4,585
Lamar Institute of Technology	2,349	2,448	2,422	2,532	2,565	2,594	2,634	2,610
Lamar-Orange	1,939	2,020	1,977	2,083	2,095	2,107	2,149	2,105
Lamar-Port Arthur	2,508	2,497	2,444	2,449	2,459	2,470	2,501	2,499
Laredo Community College	7,284	7,469	7,765	8,073	8,357	8,613	9,984	11,095
Lee College	6,170	6,226	6,553	6,587	6,674	6,747	7,151	7,468
McLennan Community College	5,721	6,110	6,565	6,713	6,876	6,931	6,949	6,911
Midland College	4,841	5,060	5,049	5,185	5,228	5,256	5,115	4,863
Navarro College	3,989	4,411	4,970	5,403	5,673	5,849	6,310	6,243
NHMCC Cy-Fair College**	-	-	3,161	6,260	7,500	9,004	12,000	14,000
NHMCC Kingwood	4,568	5,302	5,976	6,345	6,513	6,688	6,966	7,073
NHMCC Montgomery	5,316	5,776	6,257	6,599	6,826	7,154	8,253	8,970
NHMCC North Harris	9,118	9,972	10,786	10,956	11,189	11,312	11,948	12,442
NHMCC Tomball**	5,902	8,336	8,132	8,393	8,680	8,962	9,890	9,981
North Central Texas College	4,794	5,182	6,166	6,404	6,517	6,612	7,174	7,653
Northeast Texas Community College	1,990	2,203	2,423	2,561	2,593	2,620	2,629	2,575
Odessa College	4,568	4,545	4,949	5,223	5,366	5,487	5,580	5,640
Panola Junior College	1,422	1,492	1,694	1,692	1,705	1,717	1,685	1,619
Paris Junior College	2,936	3,278	3,659	3,746	3,779	3,813	3,841	3,768
Ranger Junior College	847	840	894	872	890	906	904	862
San Jacinto College Central Campus	10,816	11,139	11,259	11,843	11,942	12,028	12,341	12,460
San Jacinto College North Campus	4,937	4,976	5,036	5,329	5,381	5,437	5,708	5,891
San Jacinto College South Campus	6,238	6,632	7,229	7,575	7,666	7,745	8,038	8,186
South Plains College	7,432	8,512	8,994	9,412	9,615	9,716	9,599	9,381
South Texas Community College	11,183	12,443	13,720	14,710	15,732	16,485	19,605	22,186
Southwest Collegiate Institute	135	121	135	135	138	140	143	140
Southwest Texas Junior College	3,716	3,723	4,333	3,887	3,982	4,084	4,458	4,558
Tarrant County Northeast Campus	9,315	10,035	11,192	11,576	11,952	12,221	13,044	13,712
Tarrant County Northwest Campus	4,199	4,648	5,182	5,447	5,601	5,753	6,221	6,642
Tarrant County South Campus	7,062	7,337	8,097	8,452	8,747	9,044	9,620	10,199

	Actual		Preliminary		Projected Enrollments				
	2000	2001	2002	2003	2004	2005	2010	2015	
Tarrant County Southeast Campus	7,293	7,797	8,424	8,755	9,039	9,319	9,796	10,246	
Temple College	3,381	3,579	3,676	3,817	4,031	4,148	4,473	4,678	
Texarkana College	3,394	3,526	3,538	3,625	3,630	3,618	3,532	3,326	
Texas Southmost College	7,245	7,210	7,777	8,087	8,334	8,583	9,563	10,173	
Texas State Technical College Harlingen	3,266	3,842	4,217	4,662	4,986	5,415	6,147	6,898	
Texas State Technical College Marshall	511	595	606	612	621	626	622	603	
Texas State Technical College Waco	3,928	4,068	4,237	4,316	4,390	4,449	4,559	4,515	
Texas State Technical College West Texas	1,563	1,607	1,661	1,702	1,729	1,752	1,759	1,678	
Trinity Valley Comm College	4,588	4,604	5,214	5,406	5,495	5,577	5,795	5,856	
Tyler Junior College	8,240	8,451	8,947	9,302	9,395	9,461	9,505	9,339	
Vernon Regional Junior College	2,095	2,269	2,526	2,684	2,735	2,790	2,841	2,826	
Victoria College, The	4,021	4,006	4,029	4,194	4,291	4,368	4,430	4,329	
Weatherford College	2,751	3,136	3,605	3,949	4,148	4,337	4,545	4,507	
Western Texas College	1,176	1,323	1,652	1,770	1,859	1,863	1,828	1,735	
Wharton County Junior College	4,571	5,281	5,775	6,575	6,834	7,076	7,814	7,810	
Two-Year Colleges Statewide	447,998	478,313	516,810	540,285	555,122	568,195	606,195	631,401	

** NHMCCD Cy-Fair College opened in 2003 affecting enrollment at the NHMCCD Tomball campus.

Table 6
Forecasted Changes in Fall Headcount Participation—Public Two-year Colleges

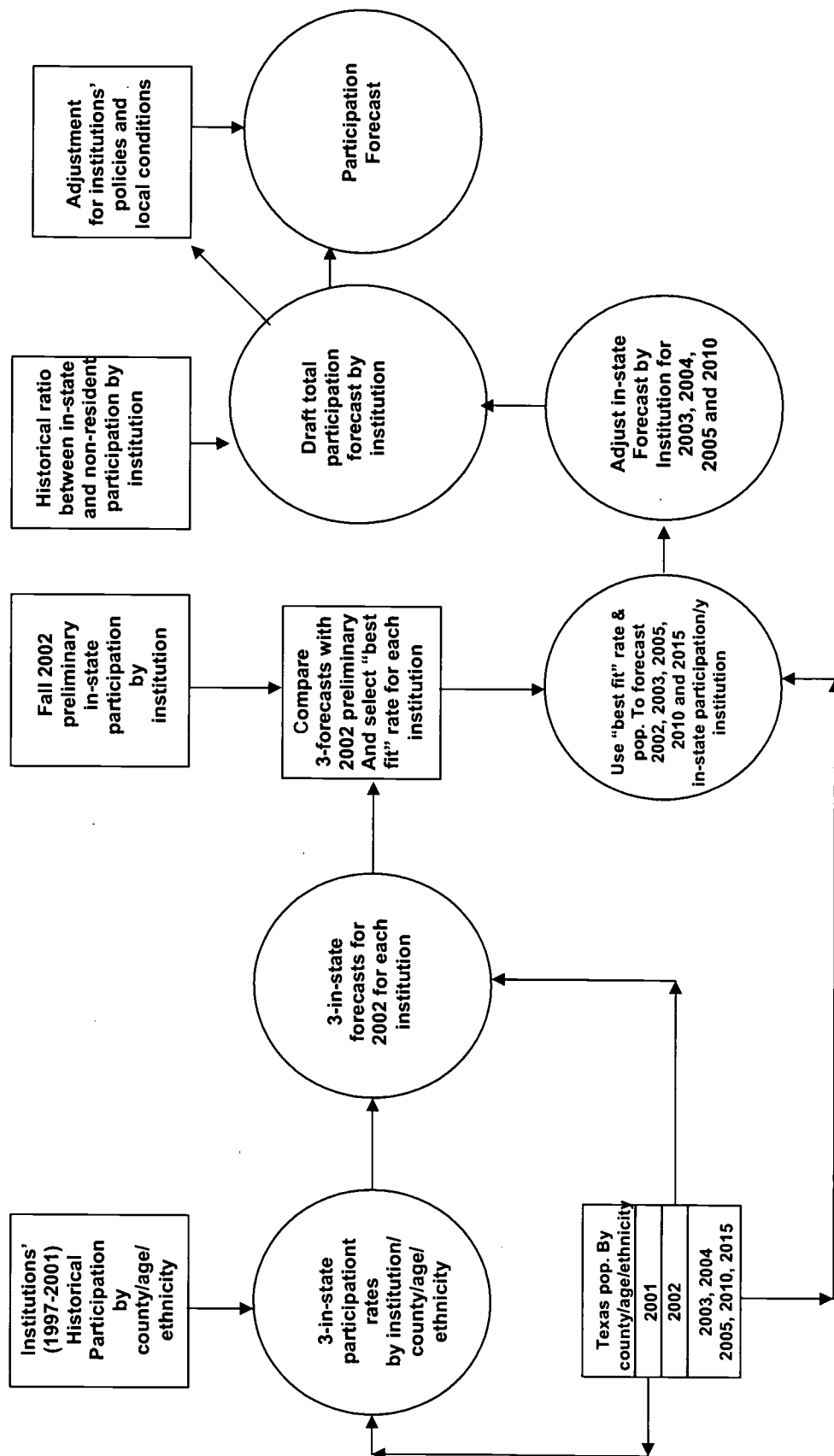
	2002-2005		2005-2010		2010-2015	
	Number	Percent	Number	Percent	Number	Percent
Alamo Northwest Vista	1,372	19.4%	386	4.6%	149	1.7%
Alamo Palo Alto College	685	9.8%	697	9.1%	198	2.4%
Alamo San Antonio College	773	3.6%	926	4.2%	473	2.0%
Alamo St. Philip's College	549	6.0%	577	5.9%	371	3.6%
Alvin Community College	290	7.0%	285	6.4%	184	3.9%
Amarillo College	478	5.2%	229	2.4%	161	1.6%
Angelina	107	2.2%	77	1.5%	24	0.5%
Austin Community College	1,863	6.4%	1,515	4.9%	1,885	5.8%
Blinn College	873	6.3%	244	1.7%	(229)	-1.5%
Brazosport College	228	5.6%	302	7.0%	240	5.2%
Central Texas College District	382	4.9%	494	6.0%	532	6.1%
Cisco Junior College	158	5.3%	(30)	-1.0%	(113)	-3.6%
Clarendon College	46	4.7%	26	2.6%	(65)	-6.2%
Coastal Bend College	173	5.0%	98	2.7%	1	0.0%
College of the Mainland	438	12.1%	115	2.8%	155	3.7%
Collin County Community College	2,296	14.6%	3,467	19.2%	3,253	15.1%
DCCCD Brookhaven College	1,158	12.7%	552	5.4%	652	6.0%
DCCCD Cedar Valley	485	12.1%	288	6.4%	203	4.3%
DCCCD Eastfield College	1,162	12.8%	753	7.4%	520	4.7%
DCCCD El Centro College	1,020	18.0%	569	8.5%	582	8.0%
DCCCD Mountain View College	1,201	19.2%	747	10.0%	821	10.0%
DCCCD North Lake College	929	11.1%	689	7.4%	1,000	10.0%
DCCCD Richland College	999	7.4%	644	4.4%	496	3.3%
Del Mar College	994	8.9%	541	4.4%	254	2.0%
El Paso Community College Dist	2,296	11.7%	2,218	10.1%	1,424	5.9%
Frank Phillips College	61	4.6%	(18)	-1.3%	(55)	-4.0%
Galveston College	69	3.0%	114	4.8%	22	0.9%

	2002-2005		2005-2010		2010-2015	
	Number	Percent	Number	Percent	Number	Percent
Grayson County College	138	3.9%	34	0.9%	(11)	-3.2%
Hill College	535	18.2%	305	8.8%	51	1.4%
Houston Community College	1,403	4.0%	2,452	6.7%	1,857	4.8%
Howard College at Big Spring	30	1.1%	(52)	-1.9%	(118)	-4.5%
Kilgore College	219	4.8%	(62)	-1.3%	(165)	-3.5%
Lamar Institute of Technology	172	7.1%	40	1.5%	(23)	-0.9%
Lamar-Orange	130	6.6%	42	2.0%	(44)	-2.0%
Lamar-Port Arthur	26	1.0%	31	1.3%	(1)	0.0%
Laredo Community College	848	10.9%	1,371	15.9%	1,111	11.1%
Lee College	194	3.0%	405	6.0%	317	4.4%
McLennan Community College	366	5.6%	18	0.3%	(38)	-0.5%
Midland College	207	4.1%	(141)	-2.7%	(252)	-4.9%
Navarro College	879	17.7%	461	7.9%	(67)	-1.1%
NH MCC Cy-Fair College**	5,843	184.8%	2,996	33.3%	2,000	16.7%
NH MCC Kingwood	712	11.9%	278	4.2%	107	1.5%
NH MCC Montgomery	897	14.3%	1,099	15.4%	717	8.7%
NH MCC North Harris	526	4.9%	636	5.6%	495	4.1%
NH MCC Tomball**	830	10.2%	928	10.4%	91	0.9%
North Central Texas College	446	7.2%	562	8.5%	478	6.7%
Northeast Texas Community College	197	8.2%	8	0.3%	(54)	-2.0%
Odessa College	538	10.9%	93	1.7%	60	1.1%
Panola Junior College	23	1.4%	(32)	-1.9%	(66)	-3.9%
Paris Junior College	154	4.2%	28	0.7%	(73)	-1.9%
Ranger Junior College	12	1.3%	(2)	-0.2%	(41)	-4.6%
San Jacinto College Central Campus	769	6.8%	313	2.6%	119	1.0%
San Jacinto College North Campus	401	8.0%	272	5.0%	183	3.2%
San Jacinto College South Campus	516	7.1%	294	3.8%	148	1.8%
South Plains College	722	8.0%	(118)	-1.2%	(218)	-2.3%
South Texas Community College	2,765	20.2%	3,120	18.9%	2,581	13.2%

	2002-2005		2005-2010		2010-2015	
	Number	Percent	Number	Percent	Number	Percent
Southwest Collegiate Institute	5	3.7%	3	2.4%	(3)	-2.4%
Southwest Texas Junior College	(249)	-5.7%	374	9.2%	100	2.2%
Tarrant County Northeast Campus	1,029	9.2%	823	6.7%	669	5.1%
Tarrant County Northwest Campus	571	11.0%	468	8.1%	421	6.8%
Tarrant County South Campus	947	11.7%	576	6.4%	579	6.0%
Tarrant County Southeast Campus	895	10.6%	477	5.1%	450	4.6%
Temple College	472	12.8%	325	7.8%	205	4.6%
Texarkana College	80	2.3%	(86)	-2.4%	(205)	-5.8%
Texas Southmost College	806	10.4%	979	11.4%	610	6.4%
Texas State Technical College Harlingen	1,198	28.4%	732	13.5%	751	12.2%
Texas State Technical College Marshall	20	3.3%	(4)	-0.6%	(19)	-3.1%
Texas State Technical College Waco	212	5.0%	110	2.5%	(44)	-1.0%
Texas State Technical College West Texas	91	5.5%	7	0.4%	(81)	-4.6%
Trinity Valley Comm College	363	7.0%	218	3.9%	61	1.0%
Tyler Junior College	514	5.7%	45	0.5%	(166)	-1.8%
Vernon Regional Junior College	264	10.5%	51	1.8%	(15)	-0.5%
Victoria College, The	339	8.4%	62	1.4%	(100)	-2.3%
Weatherford College	732	20.3%	208	4.8%	(39)	-0.9%
Western Texas College	211	12.8%	(35)	-1.9%	(93)	-5.1%
Wharton County Junior College	1,301	22.5%	738	10.4%	(4)	-0.1%
Two-Year Colleges Statewide	51,385	9.9%	37,955	6.7%	25,250	4.1%

** NHMCCD Cy-Fair College opened in 2003 affecting enrollment at the NHMCCD Tomball campus.

Figure 2
Participation Forecast Development Process
Texas Higher Education Coordinating Board



Texas Public College and University Participation Forecasts

Concept

Participation forecasts were made for each of the public colleges and universities. Aggregate participation forecasts for the 35 public universities, the 50 public community college districts, four public technical colleges, and three state colleges were determined by summing institutional fall headcount enrollments. The forecast methodology employed five years of age- and racial/ethnic-specific historical participation by Texas counties. These participation data were combined with age- and racial/ethnic-specific demographic data. The forecast model used multiple regression analysis techniques modified by expected participation policies and other conditions affecting participation at individual institutions. A general description follows:

- In-state participation, which reflects in-state students, is based on population estimates. Five-year (1997-2001) historical participation by county, age groups, and racial/ethnic groups (Hispanic, Black, White, and Other) for each institution were combined with compatible population data to develop three alternative, age-specific participation rates for each of the four racial/ethnic groups in each of the 254 counties for 2002. These rates, combined with 2002 population estimates, were used to compute three alternative in-state participation levels for each institution for 2002.
- The three alternative forecasts were compared with the institutions' preliminary in-state participation for fall 2002 and with past participation trends. Also taken into consideration was the accuracy of the past forecasts. A "best fit" participation was selected for each institution and adjusted as necessary by applying a multiplier to adjust the "best fit" within +/- 3 percent of the in-state preliminary headcount.
- Participation rates and multipliers which produced the "best fit" were applied to projected population by county/age/ethnic data for the years 2003, 2004, 2005, 2010, and 2015 to obtain a forecast of in-state participation for each institution. The resulting forecast was based on a fixed rate for the entire forecast period. However, participation rates for some racial/ethnic groups over the past five years are increasing at a greater rate than the population growth, thereby increasing the college-going rate for these groups. Forecasts were adjusted, where appropriate, in anticipation of a continued improvement in participation rates.
- Nonresidential participation, which includes both out-of-state and foreign students, was determined by examining the five-year historical record (1997-2001) and computing a ratio of nonresident to in-state students for each institution. These historical data were compared with the preliminary fall 2002 participation of nonresidential students for each institution. The

“best fit” ratio was selected for each institution and used to compute nonresident participation.

- The adjusted in-state participation and the computed nonresident participation for each institution were combined to obtain a draft total participation forecast for the years 2003, 2004, 2005, 2010, and 2015.
- An additional adjustment was made to the draft total participation based on known enrollment management policies at some institutions. Also, the draft forecast was sent to each institution for review and response prior to final publication. Based on conditions unique to specific institutions which could not be accounted for in the methodology, some adjustments were made.

Historical Participation

Tables 7A, B; and 8A, B; provide a sample of participation data. Data in these tables are for all public universities and public two-year colleges statewide by age and racial/ethnic group. This same participation information is available for each of the public universities and public two-year colleges, at the county level. Between 1997 and 2001, participation levels increased at public universities by 34,505 students (8.7 percent). At public community and technical colleges, participation increases totaled 56,214 students, or 13.3 percent.

At both types of institutions, increases have been greater for Hispanics and Blacks than for White and Other students. Nevertheless, in 2001, White and Other students made up 57.1 percent of the participation at public universities and 52 percent at public two-year colleges. Approximately 89.5 percent of all public university students and 85.2 percent of two-year college students were under 35 years of age. Texas residents comprised 89.3 percent of all students at public universities and 93.9 percent at public two-year colleges.

Table 7A
Fall In-State Participation by Age and Race/Ethnicity—Public Universities

Year	Age 15-19	Age 20-24	Age 25-29	Age 30-34	Age 35-39	Age 40-Up	All Ages
1997							
White	49,675	97,421	32,742	15,410	11,885	22,301	229,444
Hispanic	15,871	31,472	12,199	5,172	3,346	4,357	72,418
Black	8,584	12,365	4,668	2,485	2,062	2,995	33,159
Other	5,530	9,458	2,985	1,129	656	744	20,504
Total	79,660	150,716	52,594	24,196	17,949	30,397	355,525
1998							
White	51,567	98,283	30,660	14,475	11,086	21,210	227,290
Hispanic	16,884	31,456	12,397	5,293	3,352	4,717	74,112
Black	9,013	12,703	4,567	2,451	1,930	3,019	33,688
Other	6,205	10,179	3,237	1,206	732	876	22,439
Total	83,669	152,621	50,861	23,425	17,100	29,822	357,529
1999							
White	53,977	100,492	28,938	14,033	10,347	20,673	228,484
Hispanic	17,872	32,069	12,746	5,528	3,487	4,755	76,465
Black	9,632	13,819	4,854	2,576	1,977	3,296	36,156
Other	6,567	10,994	3,545	1,309	798	987	24,204
Total	88,048	157,374	50,083	23,446	16,609	29,711	365,309
2000							
White	54,691	101,431	27,484	14,103	9,736	20,386	227,867
Hispanic	19,072	32,834	12,805	5,857	3,504	5,004	79,081
Black	10,375	14,735	4,920	2,753	2,035	3,439	38,276
Other	7,240	11,515	3,676	1,403	793	1,109	25,746
Total	91,378	160,515	48,885	24,116	16,068	29,938	370,970
2001							
White	56,443	105,249	26,893	14,240	9,255	20,162	232,269
Hispanic	20,817	34,850	13,223	6,346	3,591	5,108	83,937
Black	11,293	16,087	5,070	3,022	1,962	3,499	40,934
Other	7,799	12,476	3,707	1,639	808	1,229	27,665
Total	96,352	168,662	48,893	25,247	15,616	29,998	384,805

Table 7B
In-State and Nonresident Participation for Public Universities

Year	In-State Enrollment	Nonresident Enrollment	Total Enrollment
1997	355,525	40,740	396,265
1998	357,529	40,729	398,258
1999	365,309	41,765	407,074
2000	370,970	43,656	414,626
2001	384,805	45,965	430,770

Table 8A
Fall In-State Participation by Age and Race/Ethnicity—Public Two-Year Colleges

Year	Age 15-19	Age 20-24	Age 25-29	Age 30-34	Age 35-39	Age 40-Up	All Ages
1997							
White	71,736	64,198	29,609	19,257	16,970	29,776	231,593
Hispanic	29,443	40,672	16,489	9,235	6,587	8,790	111,225
Black	9,342	10,995	6,597	5,049	4,132	5,320	41,441
Other	3,535	5,485	2,447	1,426	1,043	1,589	15,534
Total	114,056	121,350	55,142	34,967	28,732	45,475	399,793
1998							
White	72,423	63,294	27,698	17,544	15,820	29,498	226,338
Hispanic	31,034	40,884	16,800	9,308	6,550	8,971	113,555
Black	9,816	11,195	6,703	5,060	4,064	5,785	42,631
Other	3,992	5,928	2,799	1,637	1,176	1,842	17,384
Total	117,265	121,301	54,000	33,549	27,610	46,096	399,908
1999							
White	78,577	64,730	26,022	16,397	14,521	28,546	228,862
Hispanic	34,578	41,637	17,300	9,473	6,616	9,365	118,978
Black	10,826	11,887	6,965	5,107	4,255	6,164	45,217
Other	4,682	5,836	2,793	1,518	1,168	1,838	17,843
Total	128,663	124,090	53,080	32,495	26,560	45,913	410,900
2000							
White	82,329	65,864	24,707	15,832	13,592	28,110	230,497
Hispanic	36,763	43,329	18,064	9,730	6,699	9,449	124,057
Black	11,214	12,419	7,229	5,251	4,249	6,371	46,742
Other	5,768	6,368	2,806	1,634	1,188	1,998	19,782
Total	136,074	127,980	52,806	32,447	25,728	45,928	421,078
2001							
White	87,684	71,258	25,222	16,803	13,102	28,189	242,323
Hispanic	40,130	46,424	19,052	10,850	6,832	9,795	133,111
Black	11,755	13,614	7,510	5,730	4,392	6,766	49,781
Other	7,745	7,508	3,149	1,924	1,433	2,316	24,119
Total	147,314	138,804	54,933	35,307	25,759	47,066	449,334

Table 8B
In-State and Nonresident Participation for Public Two-year Colleges

Year	In-State Enrollment	Nonresident Enrollment	Total Enrollment
1997	399,793	22,306	422,099
1998	399,908	21,500	421,408
1999	410,900	24,423	435,323
2000	421,078	26,920	447,998
2001	449,334	28,979	478,313

Texas Population Projections

The participation forecast used the Texas State Data Center population projections, completed in spring 2002, which used a cohort-component technique. Projections from a base population—from the 2000 federal census—were made individually for persons with a common characteristic (in this case age, gender, and race/ethnicity) for fertility, mortality, and migration.

Age, gender and race/ethnicity-specific fertility rates were computed using recorded births and place of residence of the mother. This information was obtained from the Texas Department of Health. Data on women by age (10-to-49) and race/ethnicity were obtained from the 2000 federal census of the population.

Life survival rates for Whites, Hispanics, Blacks, and Others were computed using Texas Department of Health Mortality data. Migration rates were derived using net migration estimates by age, gender and race/ethnicity in Texas for 1990-2000. Using this as a base, migration rates were computed for White, Hispanic, Black, and Other populations for the 1990-2000 timeframe. To deal with the migration component, which is the most difficult to project, alternative scenarios of growth were developed. All scenarios used the same set of mortality and fertility rates but differed in the assumptions relative to net migration. Population projections used in this revised enrollment forecast assumed that migration rates will be 50 percent of the average 1990-2000 rates.

Statewide population projections show several significant features of the future Texas population (see Table 9):

- Between 2002 and 2015, the total population will grow at an average annual rate of about 1.9 percent.
- Hispanics will continue to be the fastest growing racial/ethnic group. In 2002, Hispanics comprised about 32.1 percent of the population; by 2015, this share will reach 38.8 percent. The Black share will drop from 11.3 percent to 10.6 percent, while the White share will decline from 53.3 percent in 2002 to approximately 45.3 percent in 2015.
- The 40-year old-and-above age group will grow at a faster rate than the younger age groups. That age group will change from 29.6 percent of the population in 2002 to 43.7 percent of the population in 2015.
- The 15-to-34 year-old population, which makes up about 29.6 percent of the total in 2002, will drop to 29 percent in 2015. Overall, the 15-to-34 age group will increase at about 1.2 percent per year until 2005 and is then expected to increase slightly faster to 1.7 percent per year between 2005 and 2015.

Although Table 9 indicates the populations at the statewide level only, similar data are available for each of the 254 Texas counties.

Table 9
Texas Statewide Population by Race/Ethnicity

Year	Age 0-14	Age 15-19	Age 20-24	Age 25-29	Age 30-34	Age 35-39	Age 40-Up	All Ages
2002								
White	2,081,168	753,950	706,764	673,836	773,606	832,941	5,353,495	11,175,760
Hispanic	2,118,853	634,883	656,112	650,228	602,659	543,055	1,897,432	7,103,222
Black	641,375	213,617	200,938	181,507	193,169	200,608	854,601	2,485,815
Other	158,303	51,204	55,400	68,192	74,768	67,337	260,996	736,200
Total	4,999,699	1,653,654	1,619,214	1,573,763	1,644,202	1,643,941	8,366,524	21,500,997
2003								
White	2,069,649	753,034	725,234	669,022	766,808	797,784	5,441,087	11,222,618
Hispanic	2,170,652	639,303	675,649	663,390	629,006	556,814	1,991,558	7,326,372
Black	639,160	216,404	207,898	180,355	194,408	197,249	881,998	2,517,472
Other	162,480	51,926	56,468	65,867	77,894	69,217	278,255	762,107
Total	5,041,941	1,660,667	1,665,249	1,578,634	1,668,116	1,621,064	8,592,898	21,828,569
2004								
White	2,057,494	753,034	739,984	671,944	749,926	772,425	5,522,436	11,267,243
Hispanic	2,222,965	650,335	689,222	678,432	652,410	571,853	2,088,402	7,553,619
Black	636,018	220,582	212,113	182,894	194,575	193,960	908,709	2,548,851
Other	166,282	53,198	57,021	64,423	79,270	71,908	296,311	788,413
Total	5,082,759	1,677,149	1,698,340	1,597,693	1,676,181	1,610,146	8,815,858	22,158,126
2005								
White	2,041,602	753,074	748,133	680,184	725,915	764,985	5,595,670	11,309,563
Hispanic	2,270,063	668,881	694,995	694,483	674,133	590,712	2,191,411	7,784,678
Black	630,406	226,143	214,338	188,762	191,543	192,206	936,480	2,579,878
Other	170,108	54,442	57,386	63,140	79,561	75,683	314,743	815,063
Total	5,112,179	1,702,540	1,714,852	1,626,569	1,671,152	1,623,586	9,038,304	22,489,182
2010								
White	1,993,745	712,875	753,538	754,844	687,510	730,673	5,861,488	11,494,673
Hispanic	2,497,410	777,972	737,918	776,358	762,468	718,394	2,729,307	8,999,827
Black	606,497	236,454	231,546	216,693	191,089	195,116	1,053,264	2,730,659
Other	184,976	61,952	61,414	64,961	71,712	89,966	418,367	953,348
Total	5,282,628	1,789,253	1,784,416	1,812,856	1,712,779	1,734,149	10,062,426	24,178,507
2015								
White	1,975,861	665,754	713,520	760,531	762,986	691,779	6,070,609	11,641,040
Hispanic	2,767,816	822,767	858,896	822,506	853,476	812,894	3,382,568	10,320,923
Black	599,668	221,219	242,368	234,073	219,421	194,408	1,163,681	2,874,838
Other	195,199	67,611	70,049	69,303	73,501	81,347	543,034	1,100,044
Total	5,538,544	1,777,351	1,884,833	1,886,413	1,909,384	1,780,428	11,159,892	25,936,845

Participation Rate Alternatives

The five-year (1997-2001) in-state participation data base and the population data base were used to obtain enrollment rates for each of the four racial/ethnic groups (White, Hispanic, Black, and Other) by county and age groups for each institution. Three alternative rates were calculated as follows:

2001 Racial/Ethnic Rate: The total number of students in a specific age/racial/ethnic group from each county attending each institution in 2001 divided by the total number of people of the specific age/racial/ethnic group living in the county.

Trend Racial/Ethnic Rates: Using five years of observed participation data, two straight-line arithmetic trend participation levels were developed by age/racial/ethnic groups and county for each institution. These were: (1) the 1997-2001 five-year trend extended to 2002 and, (2) the five-year trend extended to 2003. The equation $Y_c = a + bx$ was used, where:

a is the mean participation over the five-year period;

b is the deviation from the center year multiplied by the observed participation, summed and divided by the sum of the squares of the deviations, and

$x = +2$ for the five-year trend extended to 2002, $+3$ for the five-year trend extended to 2003.

The predicted trend participation (Y_c) for each age/racial/ethnic group was divided by the total number of people of the specific age/racial/ethnic group living in the county for the corresponding year.

Each of these three alternative participation rates contained attendance rates for each of the 254 counties at each institution by six age groups (15-to-19, 20-to-24, 25-to-29, 30-to-34, 35-to-39, and 40 and above) for four racial/ethnic groups (White, Hispanic, Black, and Other).

In-State Participation Forecast Alternatives for 2002

Previous computed participation rates for each county were multiplied by the corresponding age/racial/ethnic/county population projections for 2002. This produced three alternative forecasts of students by age/racial/ethnicity from each county expected to attend each institution in 2002. Age groups were then summed to obtain statewide forecasts of White, Hispanic, Black, and Other students at each institution in 2002. Total in-state participation for each of the three alternatives was obtained by summing the racial/ethnic participation. The three alternative in-state participation levels for each institution are shown in Tables 10 and 11.

Table 10
In-State Participation Alternative Forecasts—Public Universities

	2001 Rate	2002 (Trend) Rate	2003 (Trend) Rate
Angelo State University	6,243	6,158	6,120
Lamar University	8,518	8,373	8,495
Midwestern State University	5,357	5,276	5,327
Prairie View A&M University	6,424	6,377	6,584
Sam Houston State University	12,871	12,392	12,262
Southwest Texas State University	23,313	22,621	22,775
Stephen F. Austin State University	11,454	11,286	11,023
Sul Ross State University	2,011	2,007	1,940
Sul Ross Rio Grande College	822	839	824
Tarleton State University	7,826	7,659	7,905
Texas A&M University at Galveston	1,074	1,161	1,235
Texas A&M University – Commerce	7,458	7,332	7,293
Texas A&M University – Corpus Christi	7,269	7,111	7,287
Texas A&M University – Kingsville	5,858	5,676	5,618
Texas A&M University – Texarkana	883	902	929
Texas A&M International University	3,262	3,147	3,155
Texas A&M University	39,349	39,320	40,130
Texas Southern University	6,933	6,335	6,402
Texas Tech University	22,957	22,040	21,901
Texas Woman's University	7,460	7,549	7,264
The University of Texas at Arlington	18,580	18,342	18,518
The University of Texas at Austin	41,745	41,082	40,937
The University of Texas at Dallas	8,884	8,638	9,006
The University of Texas at El Paso	13,837	13,243	13,072
The University of Texas at San Antonio	19,249	18,861	19,074
The University of Texas at Tyler	3,665	3,599	3,658
The University of Texas-Brownsville	3,196	3,084	3,152
The University of Texas-Pan American	13,606	12,960	12,832
The University of Texas of the Permian Basin	2,364	2,355	2,375
University of Houston	29,890	29,544	29,490
University of Houston - Clear Lake	6,669	6,651	6,794
University of Houston - Downtown	9,432	9,291	9,681
University of Houston - Victoria	1,905	1,843	1,940
University of North Texas	24,683	24,436	24,708
West Texas A&M University	6,146	6,152	6,103

Table 11
In-State Participation Alternative Forecasts
Public Two-year Colleges

	2001 Rate	2002 (Trend) Rate	2003 (Trend) Rate
Alamo CCD Northwest Vista	5,306	4,930	5,964
Alamo CCD Palo Alto College	6,626	6,273	6,082
Alamo CCD San Antonio College	20,599	19,914	19,671
Alamo CCD St. Philip's College	8,293	8,068	8,063
Alvin Community College	3,651	3,575	3,517
Amarillo College	8,561	8,576	8,868
Angelina College	4,649	4,602	4,781
Austin Community College	26,459	25,779	25,973
Blinn College	12,533	12,414	12,972
Brazosport College	4,061	3,962	4,027
Central Texas College District	6,414	6,411	6,708
Cisco Junior College	2,688	2,783	2,858
Clarendon College	823	941	982
Coastal Bend College	3,113	3,108	3,196
College of the Mainland	3,371	3,208	3,115
Collin County Community College	13,322	12,621	12,881
DCCCD Brookhaven College	7,507	7,340	7,458
DCCCD Cedar Valley	2,867	2,850	2,893
DCCCD Eastfield College	8,200	7,842	7,918
DCCCD El Centro College	4,408	4,212	4,172
DCCCD Mountain View College	5,605	5,245	5,287
DCCCD North Lake College	6,305	6,400	6,682
DCCCD Richland College	11,367	11,169	11,160
Del Mar College	10,179	9,586	9,456
El Paso Community College Dist	17,214	16,453	15,613
Frank Phillips College	1,178	1,243	1,307
Galveston College	2,171	2,226	2,231
Grayson County College	3,257	3,240	3,317
Hill College	2,625	2,564	2,557
Houston Community College	25,384	25,013	24,600
Howard College at Big Spring	2,508	2,472	2,654
Kilgore College	3,912	3,869	3,844
Lamar Institute of Technology	2,442	2,512	2,654
Lamar-Orange	1,843	1,861	1,985
Lamar-Port Arthur	2,484	2,488	2,520
Laredo Community College	7,335	7,086	6,857

	2001	2002 (Trend) Rate	2003 (Trend) Rate
Lee College	6,241	6,129	6,169
McLennan Community College	5,990	5,918	6,064
Midland College	5,016	4,980	5,161
Navarro College	4,012	3,938	4,147
NHMCC Cy-Fair College**	New campus		
NHMCC Kingwood			
NHMCC Montgomery	5,256	4,974	5,291
NHMCC North Harris	5,841	5,682	5,840
NHMCC Tomball**	9,648	9,241	9,180
North Central Texas College	8,182	7,343	8,239
Northeast Texas Community College	5,055	4,900	5,094
Odessa College	2,187	2,109	2,132
Panola Junior College	4,468	4,482	4,397
Paris Junior College	1,410	1,399	1,367
Ranger Junior College	3,207	3,094	3,166
San Jacinto College-Central Campus	821	920	942
San Jacinto College-North Campus	10,343	10,475	10,867
San Jacinto College-South Campus	4,567	4,686	4,897
South Plains College	5,790	5,797	6,055
South Texas Community College	8,295	8,095	8,650
Southwest Collegiate Institute	12,778	12,654	13,550
Southwest Texas Junior College	91	146	156
Tarrant County-Northeast Campus	3,767	3,751	3,775
Tarrant County-Northwest Campus	10,085	9,754	9,859
Tarrant County-South Campus	4,687	4,540	4,658
Tarrant County-Southeast Campus	7,413	7,186	7,100
Temple College	7,855	7,824	8,223
Texarkana College	3,556	3,589	3,749
Texas Southmost College	2,651	2,620	2,620
Trinity Valley Community College	6,970	6,758	6,548
Tyler Junior College	4,623	4,554	4,610
Vernon Regional Junior College	8,436	8,350	8,418
Victoria College, The	2,241	2,319	2,487
Weatherford College	4,017	3,998	4,028
Western Texas College	3,174	3,032	3,075
Wharton County Junior College	1,294	1,335	1,414
Texas State Technical College-Harlingen	5,390	5,051	5,170
Texas State Technical College-Marshall	3,918	3,664	3,708
Texas State Technical College-Waco	590	850	1,004
Texas State Technical College-West Texas	4,060	3,973	4,032
	1,633	1,721	1,885

In-State Participation "Best Fit" Rate Selection

The next step was to select, for each institution, one of the three in-state participation rate alternatives. The following criteria were used:

1. The participation forecast produced for 2002, when compared with the preliminary 2002 participation and five-year trend, must be the one closest to the participation which follows the general trend of the historical participation pattern. If the historical participation pattern is increasing, the selected alternative should be greater than the preliminary 2002 participation. If the pattern is decreasing, the selected alternative should be less than the preliminary 2002 participation. If the pattern is stable, the nearest alternative should be selected without regard to its relationship to the preliminary 2002 participation.
2. If the historical pattern is increasing or decreasing, the 2002 participation produced by the selected alternative must fall within 3 percent of the preliminary 2002 participation. If the historical pattern is stable, the 2002 participation produced by the selected alternative must fall within plus or minus 1 percent of the preliminary 2002 participation. If necessary, a multiplier can be computed to satisfy this condition.

The selected "best fit" alternative (see Tables 12 and 13) determined which rate to use for each institution in forecasting 2003, 2004, 2005, 2010, and 2015 participation. The multiplier, if needed, was used to augment the forecast for each year.

Table 12
In-State Participation—Public Universities
Comparison of Preliminary to Forecast In-State Participation for 2002

	2002 Preliminary In-State Participation	"Best Fit" In-State Participation	Selected Rate
Angelo State University	6,187	6,158	2002
Lamar University	9,066	8,518	2001
Midwestern State University	5,513	5,357	2001
Prairie View A&M University	6,797	6,584	2003
Sam Houston State University	12,698	12,871	2001
Southwest Texas State University	24,220	23,313	2001
Stephen F. Austin State University	11,020	11,023	2003
Sul Ross State University	1,908	1,940	2003
Sul Ross Rio Grande College	886	839	2002
Tarleton State University	7,926	7,905	2003
Texas A&M University at Galveston	1,262	1,235	2003
Texas A&M University – Commerce	7,804	7,458	2001
Texas A&M University – Corpus Christi	7,411	7,287	2003
Texas A&M University – Kingsville	6,089	5,858	2001
Texas A&M University – Texarkana	956	929	2003
Texas A&M International University	3,536	3,262	2001
Texas A&M University	38,883	39,320	2002
Texas Southern University	8,343	6,933	2001
Texas Tech University	24,041	22,957	2001
Texas Woman's University	8,240	7,549	2002
The University of Texas at Arlington	20,528	18,580	2001
The University of Texas at Austin	42,387	41,745	2001
The University of Texas at Dallas	9,344	9,006	2003
The University of Texas at El Paso	14,370	13,837	2001
The University of Texas at San Antonio	20,980	19,249	2001
The University of Texas at Tyler	4,084	3,665	2001
The University of Texas-Brownsville	3,461	3,196	2001
The University of Texas-Pan American	13,969	13,606	2001
The University of Texas of the Permian Basin	2,637	2,375	2003
University of Houston	30,914	29,890	2001
University of H - Clear Lake	6,847	6,794	2003
University of H – Downtown	10,146	9,681	2003
University of H – Victoria	2,141	1,940	2003
University of North Texas	26,583	24,708	2003
West Texas A&M University	6,109	6,103	2003

Table 13
In-State Participation—Public Two-year Colleges
Comparison of Preliminary to Forecast In-State Participation for 2002

	2002 Preliminary In-State Participation	"Best Fit" In-State Participation	Selected Rate
Alamo CCD Northwest Vista	6,848	5,964	2003
Alamo CCD Palo Alto College	6,850	6,626	2001
Alamo CCD San Antonio College	20,295	20,599	2001
Alamo CCD St. Philip's College	8,813	8,293	2001
Alvin Community College	4,133	3,651	2001
Amarillo College	9,180	8,868	2003
Angelina College	4,906	4,781	2003
Austin Community College	27,778	26,459	2001
Blinn College	13,433	12,972	2003
Brazosport College	4,049	4,061	2001
Central Texas College District	6,981	6,708	2003
Cisco Junior College	2,789	2,783	2002
Clarendon College	892	941	2002
Coastal Bend College	3,436	3,196	2003
College of the Mainland	3,615	3,371	2001
Collin County Community College	14,653	13,322	2001
DCCCD Brookhaven College	8,336	7,507	2001
DCCCD Cedar Valley	3,909	2,893	2003
DCCCD Eastfield College	8,999	8,200	2001
DCCCD El Centro College	5,381	4,408	2001
DCCCD Mountain View College	6,251	5,605	2001
DCCCD North Lake College	7,309	6,682	2003
DCCCD Richland College	12,251	11,367	2001
Del Mar College	10,989	10,179	2001
El Paso Community College Dist	20,167	17,214	2001
Frank Phillips College	1,241	1,243	2002
Galveston College	2,182	2,171	2001
Grayson County College	3,324	3,317	2003
Hill College	2,758	2,625	2001
Houston Community College	31,412	25,384	2001
Howard College at Big Spring	2,546	2,508	2001
Kilgore College	4,365	3,912	2001
Lamar Institute of Technology	2,378	2,442	2001
Lamar-Orange	1,803	1,843	2001
Lamar-Port Arthur	2,418	2,484	2001

	2002 Preliminary In-State Participation	"Best Fit" In-State Participation	Selected Rate
Laredo Community College	7,472	7,335	2001
Lee College	6,415	6,241	2001
McLennan Community College	6,454	6,064	2003
Midland College	4,928	4,980	2002
Navarro College	4,586	4,147	2003
NHMCC Cy-Fair College**	2,204		na
NHMCC Kingwood	5,634	5,291	2003
NHMCC Montgomery	6,121	5,841	2001
NHMCC North Harris	10,379	9,648	2001
NHMCC Tomball**	7,751	8,182	2001
North Central Texas College	5,881	5,094	2003
Northeast Texas Community College	2,328	2,187	2001
Odessa College	4,828	4,482	2001
Panola Junior College	1,571	1,410	2001
Paris Junior College	3,517	3,207	2001
Ranger Junior College	823	821	2001
San Jacinto College-Central Campus	10,891	10,867	2003
San Jacinto College-North Campus	4,925	4,897	2003
San Jacinto College-South Campus	6,284	6,055	2003
South Plains College	8,840	8,650	2003
South Texas Community College	13,543	13,550	2003
Southwest Collegiate Institute	87	91	2001
Southwest Texas Junior College	3,366	3,751	2002
Tarrant County-Northeast Campus	10,870	10,085	2001
Tarrant County-Northwest Campus	5,198	4,687	2001
Tarrant County-South Campus	7,944	7,413	2001
Tarrant County-Southeast Campus	8,234	8,223	2003
Temple College	3,628	3,589	2002
Texarkana College	3,878	2,651	2001
Texas Southmost College	7,591	6,970	2001
Trinity Valley Community College	5,139	4,623	2001
Tyler Junior College	8,636	8,436	2001
Vernon Regional Junior College	2,492	2,487	2003
Victoria College, The	4,009	4,017	2001
Weatherford College	3,566	3,174	2001
Western Texas College	1,595	1,414	2003
Wharton County Junior College	5,687	5,390	2001
Texas State Technical College-Harlingen	4,179	3,918	2001
Texas State Technical College-Marshall	595	590	2001
Texas State Technical College-Waco	4,153	4,060	2001
Texas State Technical College-West Texas	1,655	1,633	2001

In-State Participation Forecast

The selected "best fit" participation rate alternative for each institution and for each racial/ethnic group were applied to the corresponding age/racial/ethnic group projected population for 2003, 2004, 2005, 2010, and 2015 by county. Age groups were summed for each year, by racial/ethnic group, to provide county total participation for White, Hispanic, Black, and Other students at each institution for each of the forecast years. County participation levels were summed by institution and year to provide total White, Hispanic, Black, and Other student forecasts for each institution. Finally, the racial/ethnic participation levels for each institution were summed to produce total in-state participation. Multipliers are applied to the in-state participation to meet the criteria if needed.

Nonresident Participation Ratios

The percent of in-state students varies from 2 percent to 40 percent at public universities and from 0 percent to 34 percent at public two-year colleges. Therefore, it was necessary to determine a means of accounting for expected nonresident students in each institution. This was done by selecting a representative "nonresidential factor" for each institution, based on historical data from 1997 to 2001. The ratios of nonresident to in-state participation were compared with the preliminary 2002 nonresident to in-state ratios for each institution. The selected ratio became a factor used later in the forecast process to determine nonresident participation forecasts for each institution. See Tables 14 and 15 for the 1997-2001 average, 2001, preliminary 2002, and selected ratios.

Table 14
Nonresident Participation Ratios—Public Universities

	Average	2001	Prelim 2002	Selected
Angelo State University	0.037	0.034	0.013	0.034
Lamar University	0.058	0.065	0.081	0.065
Midwestern State University	0.140	0.130	0.131	0.130
Prairie View A&M University	0.104	0.071	0.068	0.071
Sam Houston State University	0.022	0.028	0.030	0.028
Southwest Texas State University	0.031	0.033	0.034	0.033
Stephen F. Austin State University	0.024	0.024	0.030	0.024
Sul Ross State University	0.024	0.023	0.025	0.024
Sul Ross Rio Grande College	0.009	0.001	0.021	0.009
Tarleton State University	0.041	0.054	0.088	0.059
Texas A&M University at Galveston	0.327	0.289	0.249	0.289
Texas A&M University – Commerce	0.066	0.079	0.037	0.057
Texas A&M University – Corpus Christi	0.031	0.036	0.077	0.036
Texas A&M University – Kingsville	0.075	0.075	0.430	0.075
Texas A&M University – Texarkana	0.413	0.387	0.059	0.413
Texas A&M International University	0.063	0.066	0.161	0.066
Texas A&M University	0.166	0.157	0.161	0.157
Texas Southern University	0.172	0.188	0.167	0.172
Texas Tech University	0.130	0.129	0.147	0.130
Texas Woman's University	0.089	0.071	0.060	0.071
The University of Texas at Arlington	0.115	0.149	0.160	0.149
The University of Texas at Austin	0.231	0.227	0.233	0.231
The University of Texas at Dallas	0.344	0.403	0.415	0.403
The University of Texas at El Paso	0.176	0.198	0.199	0.198
The University of Texas at San Antonio	0.045	0.049	0.049	0.049
The University of Texas at Tyler	0.036	0.037	0.041	0.037
The University of Texas-Brownsville	0.058	0.121	0.024	0.121
The University of Texas-Pan American	0.028	0.031	0.030	0.031
The University of Texas of the Permian Basin	0.026	0.039	0.026	0.026
University of Houston	0.120	0.114	0.114	0.114
University of H - Clear Lake	0.150	0.162	0.132	0.150
University of H - Downtown	0.071	0.040	0.038	0.040
University of H - Victoria	0.023	0.022	0.020	0.022
University of North Texas	0.135	0.143	0.136	0.135
West Texas A&M University	0.105	0.113	0.115	0.113

Table 15
Nonresident Participation Ratios—Public Two-year Colleges

	Average	2001	Prelim 2002	Selected
Alamo CCD Northwest Vista	0.022	0.030	0.033	0.030
Alamo CCD Palo Alto College	0.037	0.025	0.019	0.025
Alamo CCD San Antonio College	0.044	0.047	0.044	0.044
Alamo CCD St. Philip's College	0.062	0.056	0.045	0.056
Alvin Community College	0.013	0.020	0.010	0.013
Amarillo College	0.003	0.004	0.005	0.003
Angelina College	0.017	0.013	0.014	0.013
Austin Community College	0.041	0.052	0.050	0.052
Blinn College	0.027	0.026	0.028	0.027
Brazosport College	0.010	0.008	0.012	0.010
Central Texas College District	0.177	0.143	0.154	0.143
Cisco Junior College	0.009	0.017	0.063	0.009
Clarendon College	0.078	0.085	0.089	0.085
Coastal Bend College	0.008	0.008	0.013	0.008
College of the Mainland	0.006	0.002	0.003	0.002
Collin County Community College	0.083	0.088	0.090	0.088
DCCCD Brookhaven College	0.076	0.106	0.093	0.106
DCCCD Cedar Valley	0.015	0.023	0.025	0.023
DCCCD Eastfield College	0.027	0.032	0.019	0.032
DCCCD El Centro College	0.064	0.085	0.072	0.080
DCCCD Mountain View College	0.020	0.024	0.018	0.024
DCCCD North Lake College	0.115	0.163	0.147	0.139
DCCCD Richland College	0.083	0.111	0.102	0.111
Del Mar College	0.055	0.027	0.021	0.055
El Paso Community College Dist	0.073	0.092	0.057	0.073
Frank Phillips College	0.063	0.065	0.077	0.076
Galveston College	0.046	0.026	0.055	0.046
Grayson County College	0.079	0.079	0.075	0.079
Hill College	0.043	0.048	0.062	0.048
Houston Community College	0.319	0.381	0.119	0.119
Howard College at Big Spring	0.028	0.023	0.043	0.028
Kilgore College	0.033	0.037	0.052	0.037
Lamar Institute of Technology	0.021	0.017	0.019	0.021
Lamar-Orange	0.121	0.103	0.097	0.121
Lamar-Port Arthur	0.012	0.012	0.011	0.012
Laredo Community College	0.044	0.050	0.039	0.044

	Average	2001	Prelim 2002	Selected
Lee College	0.015	0.000	0.022	0.020
McLennan Community College	0.024	0.023	0.017	0.024
Midland College	0.034	0.029	0.025	0.034
Navarro College	0.116	0.122	0.103	0.116
NHMCC Cy-Fair				**
NHMCC Kingwood	0.011	0.013	0.013	0.011
NHMCC Montgomery	0.017	0.017	0.019	0.017
NHMCC North Harris	0.031	0.039	0.033	0.031
NHMCC Tomball	0.018	0.022	0.022	0.018
North Central Texas College	0.048	0.045	0.048	0.048
Northeast Texas Community Coll	0.018	0.019	0.041	0.018
Odessa College	0.020	0.028	0.025	0.025
Panola Junior College	0.059	0.066	0.078	0.066
Paris Junior College	0.041	0.034	0.040	0.041
Ranger Junior College	0.045	0.038	0.086	0.038
San Jacinto College-Central Campus	0.081	0.079	0.034	0.079
San Jacinto College-North Campus	0.083	0.095	0.023	0.083
San Jacinto College-South Campus	0.126	0.152	0.074	0.126
South Plains College	0.031	0.034	0.033	0.033
South Texas Community College	0.000	0.000	0.013	0.013
Southwest Collegiate Institute	0.236	0.344	0.552	0.236
Southwest Texas Junior College	0.007	0.011	0.287	0.011
Tarrant County-Northeast Campus	0.000	0.000	0.015	0.000
Tarrant County-Northwest Campus	0.000	0.000	0.014	0.000
Tarrant County-South Campus	0.000	0.001	0.019	0.001
Tarrant County-Southeast Campus	0.000	0.001	0.023	0.001
Temple College	0.017	0.012	0.013	0.017
Texarkana College	0.355	0.331	0.004	0.355
Texas Southmost College	0.050	0.062	0.025	0.062
Trinity Valley Community College	0.018	0.014	0.015	0.018
Tyler Junior College	0.016	0.016	0.036	0.016
Vernon Regional Junior College	0.050	0.020	0.014	0.020
Victoria College, The	0.020	0.019	0.005	0.020
Weatherford College	0.017	0.015	0.011	0.017
Western Texas College	0.033	0.028	0.036	0.033
Wharton County Junior College	0.020	0.017	0.015	0.017
Texas State Technical College-Harlingen	0.005	0.003	0.009	0.005
Texas State Technical College-Marshall	0.014	0.026	0.018	0.022
Texas State Technical College-Waco	0.024	0.019	0.020	0.024
Texas State Technical College-West Texas	0.003	0.002	0.004	0.002

Draft Total Participation Forecast and Adjustments

At this point in the forecast process, total in-state participation forecasts for 2003, 2004, 2005, 2010, and 2015, plus a nonresident factor, were available for each institution. Multiplying the selected nonresident factor by the in-state participation produced nonresident participation by institution and year. Adding the nonresident and in-state participation levels resulted in a base total participation forecast for each institution for 2003, 2004, 2005, 2010, and 2015. The selected alternative used to forecast in-state participation and the factor which produced nonresident participation were controlled by quantifiable historical participation patterns and expected demographic changes. Consequently, the participation forecasts which they produced did not take into account future changes in the status of institutions or internal, non-quantifiable conditions which could influence participation at a specific college or university. These were addressed, to some degree, by making adjustments to institutional draft forecasts as appropriate:

- Some public universities have, or intend to establish, policies that will cap enrollment at specific levels. For these institutions, the model might possibly forecast an excess number of students. In cases where this occurred, the excess was subtracted and redistributed to other institutions.

Table 16
Adjustments to Draft Participation Forecasts
Based on Local Conditions

	2003	2004	2005	2010	2015
College of the Mainland	101	197	271	254	407
DCCCD Brookhaven	69	392	716	716	716
DCCCD Mountain View	106	257	284	378	466
DCCCD North Lake				198	827
NHMCCD Kingwood	678	782	887	998	1,098
NHMCCD Montgomery	161	163	265	474	679
NHMCCD North Harris	201	304	306	318	326
NHMCCD Tomball				400	600
Southwest Texas State	910	941	976	1,034	1,043
Texas Tech Univ.	336	221	171	811	2,559
Texas Woman's Univ.	(57)	(152)	(260)	(100)	
UT San Antonio				899	2,550
University of Houston			(2554)	(3915)	(4321)
University of H - Clear Lake			300	900	1700
University of H - Down Town					1000
University of H -Victoria					300

Participation Forecast –
Texas Independent Colleges and Universities

Forecasts of total participation for the independent colleges and universities were obtained by first determining the historical correlation between independent and public university total participation levels for the period 1997 to 2001, as follows:

Table 17
Actual Participation

Year	Public Universities (X)	Independent Senior Institutions (Y)
1997	396,265	99,640
1998	398,258	103,162
1999	407,074	104,788
2000	414,626	108,315
2001	430,770	111,929

These observed data were used to develop the following regression equation:

$$Y_i = \bar{Y} + \frac{\sum xY}{\sum x^2} (X_i - \bar{X}) \qquad Y_i = 105,567 + .326658427(X_i - 409,399)$$

or

Where:

Y_i is the predicted value of participation at independent colleges and universities

X_i is the predicted value of participation at public universities

\bar{Y} is the mean of the Y observations (independent senior institutions)

\bar{X} is the mean of the X observations (public universities)

x is the deviation of X observations from the mean

After forecasts for public universities were made, the values as shown below were substituted for X_i . The regression equation was used to predict the participation for independent colleges and universities. An additional multiplier was added to account for past error. The following forecast was predicted:

Table 18
Independent Colleges and Universities Forecast

Year	Public University Forecast	Independent Colleges and University Forecast
2003	466,965	117,877
2004	474,797	120,456
2005	479,442	122,666
2010	501,828	129,366
2015	517,286	132,580

Success in Texas' Public Colleges and Universities to 2015

Although enrolling more students in higher education is the first *Closing the Gaps* goal, achieving it will not benefit Texas substantially if those students do not earn degrees and certificates. For the first time the Coordinating Board has attempted to determine degree and certificate production, based on the current rate of awards, as enrollments increase.

The number of degrees and certificates awarded annually increased slightly between 1997 and 2001. For instance, the state's public community and technical colleges increased from 37,748 to 40,444 (7.1 percent) in the number of associate degrees and certificates awarded. Texas' public universities, from 1997 to 2001, increased awards from 74,607 to 79,954 (6.7 percent) for associate, bachelors, masters, doctoral, and special doctoral degrees. Bachelor's degrees increased 7.2 percent or 3,940 during the same time frame, with the largest increase between 1998 and 1999 (2,475).

Step One was to develop a ratio of enrollment-to-awards produced at both the public two-year colleges and the public universities over the five-year period from 1997 to 2001 (see Table 19).

Table 19 – Historical Ratios

	1997	1998	1999	2000	2001
Public Two-Year Institutions					
Enrollment	422,099	421,408	435,3232	447,998	478,313
Associate Degrees & Certificates	37,748	38,362	38,358	40,553	40,444
Enrollment/Award Ratio	11.18	10.99	11.35	11.05	11.83
Public Universities					
Enrollment	396,265	398,258	407,074	414,626	430,770
Bachelor Degrees	53,994	54,715	57,190	57,421	57,934
Enrollment/Award Ratio	7.34	7.28	7.12	7.22	7.44

Step Two uses a trend analysis to project the enrollment/award ratio for each sector to 2015, with the participation forecast as a basis (see Table 20).

Table 20 – Trend Ratios

	2003	2004	2005	2010	2015
Public Two-Year Institution Ratio	12.37	12.51	12.70	12.95	13.20
Public University Ratio	7.49	7.55	7.57	7.60	7.66

Step Three applied those ratios to the participation projection for each year by sector to develop the success forecast (see Table 21).

Table 21 – Success Forecast

	2003	2004	2005	2010	2015
Public Two-Year Institutions					
Enrollment	540,285	555,122	568,195	606,195	631,401
Associate Degrees & Certificates	43,632	44,286	44,636	46,636	47,629
Enrollment/Award Ratio	12.37	12.51	12.70	12.95	13.2
Public Universities					
Enrollment	466,965	474,797	479,442	501,828	517,286
Bachelor Degrees	62,312	62,857	63,426	66,059	67,468
Enrollment/Award Ratio	7.49	7.55	7.56	7.60	7.67

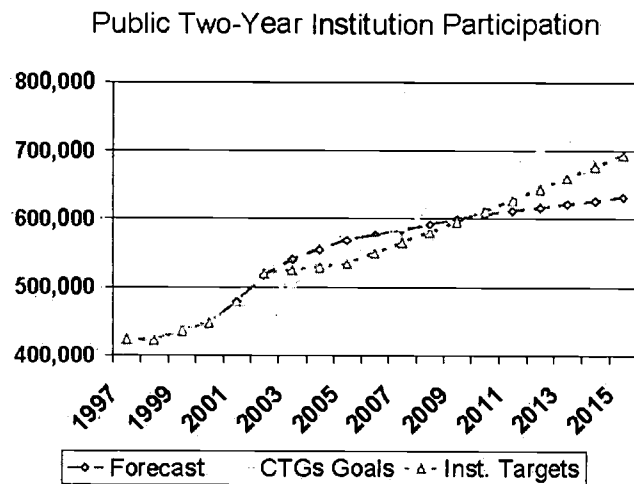
Based on this forecast, Texas will fall short of awarding the 59,000 associate's degrees and certificates and the 104,000 bachelor's degrees to achieve the *Closing the Gaps by 2015* success goal. However, these projections are based on current degree production trends and can improve as retention programs are implemented or improved at the institutions.

Addendum *Closing the Gaps in Participation and Success*

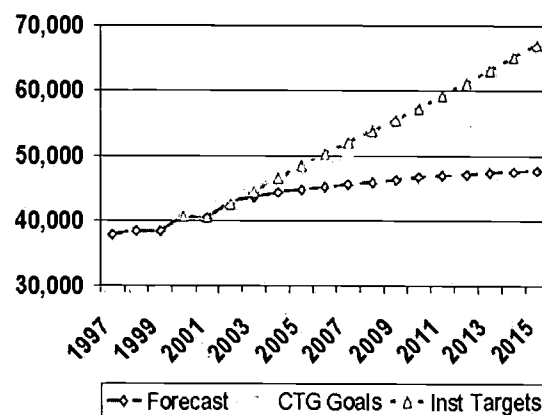
Only 5 percent of the Texas population was enrolled in higher education in recent years, compared to a national average of 5.4 percent. In Texas, that difference represents 80,000 students. Within Texas, different racial and ethnic groups participate in higher education at different rates. In 2000, the Coordinating Board introduced a higher education plan, *Closing the Gaps by 2015*, including a goal to close the gaps in college participation rates between Texas and other states, and within Texas, while adding 500,000 more students. The success goal included increasing the number of degrees and certificates awarded by 50 percent by 2015.

During 2001 all the public institutions were asked to submit individual institutional –level targets for these goals. Figures 3 thru 6 illustrate the differences in participation and award production between the *Closing the Gaps* targets, the institution-level targets, and the Coordinating Board projections based on current trends.

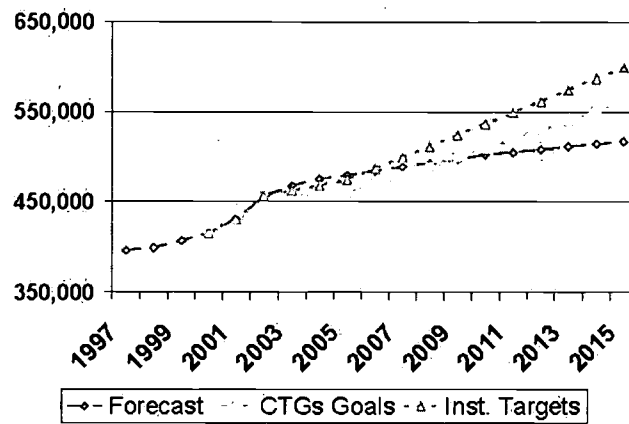
Figures 3 and 4



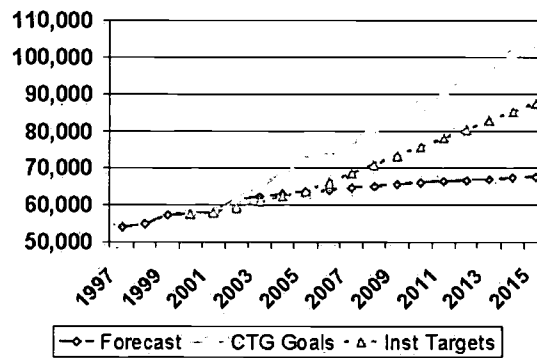
Public Two-Year Institution Associates and Certificates



Figures 5 and 6
Public University Participation



Public University Bachelor's Degrees



Appendix A
Fall Continuing Education Enrollment
Public Two-year Colleges

In fall 1996, the Texas Legislature began funding continuing education courses at the same rate as equivalent semester length courses at public community and technical colleges. At that time, the Coordinating Board began collecting more specific data on the continuing education courses.

Because the state provides funding for these courses, a five-year summary of the number of students enrolled in these classes is included here. Table A-1 contains the fall quarter continuing education enrollments unduplicated with the semester length enrollments for fall 1997 through fall 2001 for each of the community and technical colleges.

Table A-1
Fall Continuing Education Enrollment
Public Two-year Colleges

	First Quarter 1997	First Quarter 1998	First Quarter 1999	First Quarter 2000	First Quarter 2001
Alamo CCD Northwest Vista	0	5	14	64	47
Alamo CCD Palo Alto College	507	455	453	491	334
Alamo CCD San Antonio College	1,858	2,101	1,798	1,872	1,856
Alamo CCD St. Philip's College	398	343	418	975	516
Alvin Community College	485	610	767	872	696
Amarillo College	5,280	7,213	7,496	8,245	7,692
Angelina College	1,996	1,729	1,455	1,087	1,138
Austin Community College	1,582	1,837	1,558	2,177	2,070
Blinn College	677	893	942	555	610
Brazosport College	363	261	220	356	239
Central Texas College District	2,557	2,309	1,452	1,592	1,590
Cisco Junior College	53	77	71	68	136
Clarendon College	135	179	141	102	47
Coastal Bend College	257	518	548	409	431
College of the Mainland	1,350	1,124	1,124	1,193	2,236
Collin County Community College District	3,854	3,921	4,603	4,517	4,604
DCCCD Brookhaven College	3,161	3,528	2,520	2,711	2,690
DCCCD Cedar Valley College	949	950	735	769	873
DCCCD Eastfield College	1,882	1,637	1,309	1,301	1,396
DCCCD El Centro College	2,217	3,233	2,728	3,776	3,514
DCCCD Mountain View College	1,645	1,860	1,593	1,824	1,443
DCCCD North Lake College	2,273	2,384	1,948	2,356	3,201
DCCCD Richland College	4,400	3,744	4,117	4,682	4,024
Del Mar College	2,174	2,359	2,161	1,746	2,090

	First Quarter 1997	First Quarter 1998	First Quarter 1999	First Quarter 2000	First Quarter 2001
El Paso Community College District	3,469	3,584	4,125	4,305	3,933
Frank Phillips College	519	1,461	1,121	1,305	1,231
Galveston College	622	773	763	819	349
Grayson County College	981	849	749	775	842
Hill College	116	226	189	422	335
Houston Community College District	5,357	3,822	3,945	6,778	8,111
Howard College at Big Spring	1,618	2,032	2,305	2,490	2,374
Kilgore College	1,837	2,399	1,820	2,892	2,614
Lamar University Institute of Technology	300	196	271	624	245
Lamar University-Orange	103	44	11	50	15
Lamar University-Port Arthur	177	297	163	167	209
Laredo Community College	945	1,180	1,160	1,482	1,153
Lee College	436	439	447	471	432
McLennan Community College	824	1,081	1,146	941	915
Midland College	804	1,404	1,013	1,106	1,698
Navarro College	898	1,057	997	1,333	854
North Central Texas College	495	219	231	266	121
NHMCC Kingwood	722	669	620	732	486
NHMCC Montgomery	808	724	844	652	547
NHMCC North Harris	1,207	1,299	1,509	1,411	1,784
NHMCC Tomball	2,252	365	439	922	698
Northeast Texas Community College	474	381	309	238	236
Odessa College	1,053	1,570	1,104	1,829	1,699
Panola College	201	219	196	293	191
Paris Junior College	1,113	837	911	747	838
Ranger Junior College	53	56	85	71	62
San Jacinto College-Central Campus	1,401	1,776	1,680	2,011	1,547
San Jacinto College-North Campus	671	745	655	841	792

	First Quarter 1997	First Quarter 1998	First Quarter 1999	First Quarter 2000	First Quarter 2001
San Jacinto College-South Campus	663	417	478	803	811
South Plains College	850	636	374	652	841
South Texas Community College	626	340	361	704	599
Southwest Collegiate Institute of the Deaf	5	7	0	0	0
Southwest Texas Junior College	168	314	383	245	207
Tarrant County-Northeast Campus	1,091	1,116	981	1,188	887
Tarrant County-Northwest Campus	895	2,232	1,393	1,383	1,166
Tarrant County-South Campus	1,524	1,660	1,436	1,580	1,563
Tarrant County-Southeast Campus	361	552	527	665	637
Temple Junior College	126	286	230	410	328
Texarkana College	1,412	1,670	1,527	1,864	1,795
Texas Southmost College	339	730	703	753	439
Trinity Valley Community College	327	238	282	782	887
Tyler Junior College	1,461	1,555	1,531	1,822	1,741
Vernon Regional Junior College	872	876	1,408	1,516	1,323
Victoria College, The	1,142	962	1,113	1,223	938
Weatherford College	549	523	498	609	1,585
Western Texas College	334	615	443	683	582
Wharton County Junior College	966	911	721	828	780
Statewide Community Colleges Total	83,153	88,570	83,317	98,620	96,083
Texas State Technical College-Harlingen	523	486	424	502	235
Texas State Technical College-Marshall	0	0	0	11	7
Texas State Technical College-Waco	32	69	22	49	38
Texas State Technical College-West Texas	520	312	131	687	117
Statewide TSTC Total	1,075	867	577	1,249	397

Related reports available from the Texas Higher Education Coordinating Board,
Division of Planning and Information Resources:

- *Closing the Gaps by 2015*, Texas Higher Education Plan, approved 2000
- *Closing the Gaps by 2015: 2002 Progress Report*, July 2002
- Regional Plan for Texas Higher Education, October 2002

For more information, contact:

Susan E. Brown
Texas Higher Education Coordinating Board
Division of Planning and Information Resources
P O Box 12788
Austin, TX 78711-2788

(512) 427-6146
(512) 427-6127 (Fax)
Susan.Brown@thechb.state.tx.us

The Texas Higher Education Coordinating Board does not discriminate on the basis of race, color, national origin, gender, religion, age, or disability in employment or the provision of services.



U.S. Department of Education
Office of Educational Research and Improvement (OERI)
National Library of Education (NLE)
Educational Resources Information Center (ERIC)



REPRODUCTION RELEASE

(Specific Document)

I. DOCUMENT IDENTIFICATION:

Title: Regional Plan for Texas Higher Education	
Author(s): David W. Gardner, Susan Brown, Rissa Potter	
Corporate Source: Texas Higher Education Coordinating Board	Publication Date: Dec. 2002

II. REPRODUCTION RELEASE:

In order to disseminate as widely as possible timely and significant materials of interest to the educational community, documents announced in the monthly abstract journal of the ERIC system, *Resources in Education* (RIE), are usually made available to users in microfiche, reproduced paper copy, and electronic media, and sold through the ERIC Document Reproduction Service (EDRS). Credit is given to the source of each document, and, if reproduction release is granted, one of the following notices is affixed to the document.

If permission is granted to reproduce and disseminate the identified document, please CHECK ONE of the following three options and sign at the bottom of the page.

The sample sticker shown below will be
affixed to all Level 1 documents

PERMISSION TO REPRODUCE AND DISSEMINATE THIS MATERIAL HAS BEEN GRANTED BY ----- <i>Sample</i> ----- TO THE EDUCATIONAL RESOURCES INFORMATION CENTER (ERIC)
1

Level 1



Check here for Level 1 release, permitting
reproduction and dissemination in microfiche or
other ERIC archival media (e.g., electronic) and
paper copy.

The sample sticker shown below will be
affixed to all Level 2A documents

PERMISSION TO REPRODUCE AND DISSEMINATE THIS MATERIAL IN MICROFICHE, AND IN ELECTRONIC MEDIA, FOR ERIC COLLECTION SUBSCRIBERS ONLY, HAS BEEN GRANTED BY ----- <i>Sample</i> ----- TO THE EDUCATIONAL RESOURCES INFORMATION CENTER (ERIC)
2A

Level 2A



Check here for Level 2A release, permitting reproduction
and dissemination in microfiche and in electronic media for
ERIC archival collection subscribers only

The sample sticker shown below will be
affixed to all Level 2B documents

PERMISSION TO REPRODUCE AND DISSEMINATE THIS MATERIAL IN MICROFICHE ONLY HAS BEEN GRANTED BY ----- <i>Sample</i> ----- TO THE EDUCATIONAL RESOURCES INFORMATION CENTER (ERIC)
2B

Level 2B



Check here for Level 2B release, permitting reproduction
and dissemination in microfiche only

Documents will be processed as indicated provided reproduction quality permits.
If permission to reproduce is granted, but no box is checked, documents will be processed at Level 1.

I hereby grant to the Educational Resources Information Center (ERIC) nonexclusive permission to reproduce and disseminate this document as indicated above. Reproduction from the ERIC microfiche or electronic media by persons other than ERIC employees and its system contractors requires permission from the copyright holder. Exception is made for non-profit reproduction by libraries and other service agencies to satisfy information needs of educators in response to discrete inquiries.

Signature: <i>David W. Gardner</i>	Printed Name/Position/Title: David W. Gardner, Asst.Cmsr.
Organization/Address: Texas Higher Education Coordinating Board P.O.Box 12788 Austin, TX 78711	Telephone: 512/427-6146 E-Mail Address: shown below FAX: 512- 427-6127 Date: 2-20-03

rissa.potter@thecb.state.tx.us

III. DOCUMENT AVAILABILITY INFORMATION (FROM NON-ERIC SOURCE):

If permission to reproduce is not granted to ERIC, or, if you wish ERIC to cite the availability of the document from another source, please provide the following information regarding the availability of the document. (ERIC will not announce a document unless it is publicly available, and a dependable source can be specified. Contributors should also be aware that ERIC selection criteria are significantly more stringent for documents that cannot be made available through EDRS.)

Publisher/Distributor:

Texas Higher Education Coordinating Board (THECB)

Address:

P.O. Box 12788
Austin, TX 78711-2788

Price:

Free upon request. Also available on THECB Website; listed under Reports:
<http://www.thecb.state.tx.us/DataAndStatistics/>

IV. REFERRAL OF ERIC TO COPYRIGHT/REPRODUCTION RIGHTS HOLDER:

If the right to grant this reproduction release is held by someone other than the addressee, please provide the appropriate name and address:

Name:

N/A

Address:

V. WHERE TO SEND THIS FORM:

Send this form to the following ERIC Clearinghouse:

However, if solicited by the ERIC Facility, or if making an unsolicited contribution to ERIC, return this form (and the document being contributed) to:

ERIC Processing and Reference Facility
4483-A Forbes Boulevard
Lanham, Maryland 20706

Telephone: 301-552-4200
Toll Free: 800-799-3742
FAX: 301-552-4700
e-mail: ericfac@inet.ed.gov
WWW: <http://ericfacility.org>

EFF-088 (Rev. 2/2001)