

## DOCUMENT RESUME

ED 463 807

JC 020 323

TITLE Jefferson College Fall 2001 Factbook. Volume I. Student Characteristics.

INSTITUTION Jefferson Coll., Hillsboro, MO.

PUB DATE 2001-10-00

NOTE 89p.

PUB TYPE Reports - Research (143)

EDRS PRICE MF01/PC04 Plus Postage.

DESCRIPTORS Age; Community Colleges; Degrees (Academic); \*Enrollment; Majors (Students); Minority Groups; \*Outcomes of Education; Sex; \*Student Characteristics; Student Records; \*Two Year College Students; Two Year Colleges

IDENTIFIERS \*Jefferson College MO

## ABSTRACT

This report from Jefferson College (Missouri) contains demographics and other statistics on its students. Highlights include: (1) In fall 2001, Jefferson had an enrollment of 2,027 full-time and 1,890 part-time students--28 more students than the previous year, and a credit-hour increase of 4%; (2) 94% of the total student body was degree-seeking; (3) 26% of Jefferson County 2001 high school graduates enrolled at Jefferson College in fall 2001, down 2% from the previous year; (4) The average age of the student body was 25 years--in 1991, the average age was 29 years; (5) The ratio of female to male students was approximately 6 to 4, a rate which has remained constant for more than 10 years; (6) Nearly twice as many females were seeking an associate of arts degree, compared with males; however, men predominated in the two-year certificate programs; (7) 58% of degree-seeking students were female, and 46% of degree-seeking students were under age 20; (8) 56% of students were enrolled full time; (9) The minority enrollment for fall 2001 was 3%; and (10) Job placement for vocational-technical graduates was very high--data from the State Department of Elementary and Secondary Education's Statewide Placement Service show that, for the 200 vo-tech graduates in the year 2000 who were available for employment, 90% were employed in a job related to the field of study after 180 days. (NB)

Fall, 2001

# Factbook

## Volume I: Student Characteristics

October 2001

Office of Research & Planning  
Decision Support Center

2

BEST COPY AVAILABLE

1

3

U.S. DEPARTMENT OF EDUCATION  
Office of Educational Research and Improvement  
EDUCATIONAL RESOURCES INFORMATION  
CENTER (ERIC)

This document has been reproduced as  
received from the person or organization  
originating it.

Minor changes have been made to  
improve reproduction quality.

Points of view or opinions stated in this  
document do not necessarily represent  
official OERI position or policy.

PERMISSION TO REPRODUCE AND  
DISSEMINATE THIS MATERIAL HAS  
BEEN GRANTED BY

I. Page

TO THE EDUCATIONAL RESOURCES  
INFORMATION CENTER (ERIC)

1

*Fall 2001 Factbook*  
*Volume I*  
*Student Characteristics*

#### ADMISSIONS

586 recent graduates from the Jefferson County area schools enrolled for the Fall 2001 semester. This total is seven more than the preceding fall semester.

Overall, 26% of the recent high school graduates for Jefferson county high schools enrolled at Jefferson College this fall. An additional 66 recent high school graduates from out-of-district high schools also enrolled this fall.

With 1994 as a base year, Grandview, Hillsboro, and Northwest have shown the largest increases in enrollment, while Fox has the largest decrease. Over the past eight years, 28.7% of all local high school graduates have enrolled at Jefferson.

#### TOTAL STUDENT BODY

2,027 full-time and 1,890 part-time, for a total of 3,917 students, were enrolled at census date. This is a 28 more students than last year. Credit hour generation increased by 3.7%. The average age of the student body continues to drop and is 25.3 this fall.

#### DEGREE-SEEKING STUDENTS

2,668 freshmen, and 1,020 sophomores are degree-seeking. This is 94% of the total student body. There were 775 first-time, full-time degree-seeking students enrolled this fall, 35 more than the preceding fall term.

#### AREA TECHNICAL SCHOOL

ATS enrollment was 199 in high school level programs and 151 in college level programs. This is an increase of 28 students from last fall. Grandview, Hillsboro, and Kingston at the high school level, and DeSoto and Hillsboro at the college level have met or exceeded their enrollment quotas at the ATS.

#### STANDARDIZED TESTING

483 students with an average ACT composite score of 20.0 enrolled at Jefferson this fall. This is slightly below the national average of 21.0. ASSET placement testing has been discontinued and replaced by the COMPASS, but summary data are not yet available. CAAP exit testing has been discontinued and replaced by CBASE. CBASE passing rates and average subtest scores remain higher than the state averages.

#### STUDENT OUTCOMES

607 students earned awards last year including 191 A.A.S. degrees and 265 A.A./A.S. degrees.

The four year average completion rates for the federal Student Right-to-Know cohort is 30.5% completion and 14.8% transfer.

330 first-time Jefferson students enrolled in other Missouri institutions in Fall 1999, 99% of the 1999 vo-tech graduates were employed.

#### JEFFERSON COLLEGE ARNOLD

Last year, and for the past five years, the Arnold attendance site accounted for at least 23% of all student credit hours generated in summer, 12% in fall, and 10% in spring. Nearly 40% of all Jefferson students take course work at the Arnold attendance site, and the students three years older on average than the total student body..

## Executive Summary

# Table of Contents

## Page

### Section 1: Admissions

1.1 2000-2001 Comparison Chart--Recent County High School Graduates/In District.....	6
1.2 2000-2001 Comparison Chart--Recent High School Graduates/Out of District.....	7
1.3 1994-2001 Comparison of Enrollments from Each Jefferson County High School.....	8

### Section 2: Total Student Body

2.1 Fall Semesters: Full-Time, Part-Time, and Total Headcount.....	9
2.2 Gender of Students.....	10
2.3 Age of Students.....	10
2.4 Student Ethnicity.....	10
2.5 Total Enrollment by Class.....	11
2.6 Degree-Seeking Enrollment by Class.....	11
2.7 Non Degree-Seeking Enrollment by Class.....	11
2.8 Percent of Change in Class Status.....	12
2.9 Fall Term Credit Hour Generation by Enrollment Type.....	13
2.10 Fall Term Credit Hour Generation by Student Classification.....	13
2.11 Fall Term Credit Hour Generation by Division.....	13
2.12 Fall Term Credit Hour Generation by Student Type.....	14
2.13 Student Headcount, Credit Hours, and FTE by School Term.....	15
2.14 Headcount Enrollment and FTE by School Term.....	16

# *Table of Contents--Continued*

## **Page**

### **Section 2: Total Student Body—(CONTINUED)**

2.15 Percent of Change in Headcount and FTE.....	16
2.16 Student Enrollment by Degree Sought.....	17
2.17 Student Enrollment by Major.....	18
2.18 Student Enrollment by Program Code.....	19
2.19 High Schools Attended.....	20
2.20 High School Locations of Enrolled Students, Fall 2001.....	21

### **Section 3: Degree-Seeking Students**

3.1 Full-Time and Part-Time Degree-Seeking Students.....	22
3.2 Degree-Seeking Students by Gender.....	22
3.3 Degree-Seeking Students by Age Group.....	22
3.4 Ethnicity of Degree-Seeking Students.....	22
3.5 First-Time, Degree-Seeking Students by Gender.....	23
3.6 First-Time, Degree-Seeking Students by Age Group.....	23
3.7 Ethnicity of First-Time, Degree-Seeking Students.....	23
3.8 Full-Time, First-Time, Degree-Seeking Students by Gender.....	24
3.9 Full-Time, First-Time, Degree-Seeking Students by Age Group.....	24
3.10 Ethnicity of Full-Time, First-Time, Degree-Seeking Students.....	24
3.11 Enrollment Comparison by Degree-Seeking Category.....	25

### **Section 4. Area Technical School**

4.1 High School Level Enrollment by Program Area.....	26
4.2 College Level Enrollment by Program Area.....	26
4.3 Enrollment by Home School - High School Level Programs.....	27
4.4 Enrollment by Home School - College Level Programs.....	27
4.5 High School Program Enrollments by High School.....	28
4.6 College Program Enrollments by High School.....	28

# Table of Contents--Continued

## Page

### Section 5. Standardized Testing

5.1 ACT Scores for 2000-2001 Enrolled Freshmen.....	29
5.2 CBASE Testing -- Passing Rates by Subject.....	30
5.3 CBASE Testing -- Average Score Comparisons.....	31

### Section 6. Student Outcomes

6.1 Awards Conferred.....	32
6.2 Awards Conferred by CIP Code Major.....	33-34
6.3 Federal Student Right-To-Know Graduation Rates.....	35-36
6.4 Jefferson College First-Time Students Enrolled in Other Institutions in Missouri.....	37
6.5 Percent of 2000 Degree and Certificate Graduates Available for Placement and Employed.....	38
6.6 Historical Vo-Tech Job Placement Rates.....	39

### Section 7. Jefferson College Arnold

7.1 Sections, Enrollment and Credit Hours at Jefferson College Arnold.....	40
7.2 Profile of Jefferson College Arnold.....	41
7.3 Trends in Enrollment and Credit Hours at Jefferson College Arnold.....	42

### Section 8. Student Attendance Patterns

8.1 JCA Student Enrollment by Zip Code.....	43
8.2 Annual Attendance by Site by Distinct Students.....	44

**Section 1: Admissions****1.1 2000-2001 Comparison Chart--Recent County High School Graduates/In District**

**Census Report**  
2000-2001 COMPARISON CHART  
RECENT HIGH SCHOOL GRADUATES ONLY  
SEPTEMBER 17, 2001

Jefferson County High School	# of 2000 Graduates	# of 2000 Graduates Enrolled (as of 9-19-00)	% of 2000 Graduates Enrolled	# of 2001 Graduates	# of 2001 Graduates Enrolled (as of 9-17-01)	% of 2001 Graduates Enrolled	Change from 2000 to 2001	Percentage
Christian Outreach	6	3	50%	9	4	44%	+1	+33%
Crystal City (+)	58	24	41%	54	26	48%	+2	+8%
DeSoto	197	78	40%	190	67	35%	-11	-14%
Festus (+)	141	59	42%	168	66	39%	+7	+12%
Fox	308	66	21%	304	47	15%	-19	-29%
Grandview	69	32	46%	76	20	26%	-12	-38%
Herculaneum	116	31	27%	101	30	30%	-1	-3%
Hillsboro (+)	224	75	33%	237	107	45%	+32	+43%
Northwest (+)	380	69	18%	445	91	20%	+22	+32%
People's Christian	7	3	43%	13	6	46%	+3	+100%
Seckman	265	55	21%	314	58	18%	+3	+5%
Twin City Christian	11	3	27%	4	0	0%	-3	-100%
Windsor	172	52	30%	200	41	21%	-11	-21%
St. Pius X	116	29	25%	103	23	22%	-6	-21%
<b>TOTAL</b>	<b>2070</b>	<b>579</b>	<b>28%</b>	<b>2218</b>	<b>586</b>	<b>26%</b>	<b>+7</b>	<b>+1%</b>

(+) = Designates high schools with Class of 2001 graduates eligible for A+ Scholarship.

Information taken from Banner generated report (WSADJCHS) and Jefferson County High School Graduation data received from area high schools.

The table on the left summarizes the number of recent graduates from area high schools for the last two years and compares the number and percent of those graduates who enrolled at Jefferson College in the fall terms of 2000 and 2001.

In 2001, there were 48 more high school graduates from area high schools. Jefferson College's yield was seven additional students from this graduating class. Twenty-six percent of the year 2001 graduates enrolled in the fall term at Jefferson this year as compared with 28% last year.

9/24/2001

## Section 1: Admissions

### 1.2 2000-2001 Comparison Chart--Recent High School Graduates/Out of District (Primary Feeder Schools from Out of County Schools)

**Census Report**  
2000-2001 COMPARISON CHART  
RECENT OUT-OF-DISTRICT HIGH SCHOOL GRADUATES\*\*  
SEPTEMBER 17, 2001

Out of District High School	# of 2000 Graduates	# of 2000 Graduates Enrolled (as of 9-19-00)	% of 2000 Graduates Enrolled	# of 2001 Graduates	# of 2001 Graduates Enrolled (as of 9-17-01)	% of 2001 Graduates Enrolled	Change from 2000 to 2001
							Numbers Percentage
Farmington (+)	234	1	0%	276	2	1%	+1 +100%
Kingston	42	5	12%	50	9	18%	+4 +80%
Life Christian School	17	0	0%	22	0	0%	+0 +0%
Lindbergh (+)	371	2	1%	408	0	0%	-2 -100%
Mehlville (+)	390	2	1%	398	1	0%	-1 -50%
North County (+)	200	6	3%	202	5	2%	-1 -17%
Oakville (+)	481	7	1%	423	5	1%	-2 -29%
Pacific (+)	200	3	2%	210	0	0%	-3 -100%
Perryville (+)	184	21	11%	171	10	6%	-11 -52%
Potosi (+)	164	15	9%	150	10	7%	-5 -33%
St. Vincent	37	2	5%	47	2	4%	+0 +0%
Ste. Genevieve	148	31	21%	139	21	15%	-10 -32%
Valle	34	10	29%	41	1	2%	-9 -90%
<b>TOTAL</b>	<b>2502</b>	<b>105</b>	<b>4%</b>	<b>2537</b>	<b>66</b>	<b>3%</b>	<b>-39 -37%</b>

(+) = Designates high schools with Class of 2001 graduates eligible for A+ Scholarship.

Information taken from Banner generated report (SADHSE)  
Out of District high school graduation data received from out of district high schools.

\*\* High schools include those who have invited Jefferson College to visit and also area A+ High Schools.

This admissions table is similar to the preceding one, but summarizes the number of graduates and graduates enrolled at Jefferson College from the surrounding out-of-county high schools.

There were 35 more graduates this year from the surrounding out-of-county high schools, and there were 39 fewer graduates who enrolled at Jefferson College from these high schools. This represents a 37% decrease in enrollments this fall from out of district high schools.

9/24/2001



## Section 1: Admissions

### Fall 2001 Factbook: Volume I, Student Characteristics

#### 1.3 1994-2001 Comparison of Enrollments from Each Jefferson County High School

High School	Fall 1994	Fall 1995	Fall 1996	Fall 1997	Fall 1998	Fall 1999	Fall 2000	Fall 2001	Cum. Change from 94-01
Christian Outreach*	unknown	unknown	unknown	5	3	5	3	4	-1
Crystal City	26	15	28	34	27	24	24	26	+0
De Soto	73	73	85	52	89	63	78	67	-6
Festus	71	58	71	56	51	63	59	66	-5
Fox	103	127	155	124	111	85	66	47	-56
Grandview	8	16	15	28	18	20	32	20	+12
Herculaneum	32	35	34	35	42	37	31	30	-2
Hillsboro	65	74	76	85	94	83	75	107	+42
Northwest	51	64	59	76	82	76	69	91	+40
Seckman #	0	0	0	0	0	65	55	58	-7
People's Christian*	unknown	unknown	unknown	2	7	4	3	6	+4
Twin City Christian*	unknown	unknown	unknown	2	8	1	3	0	-2
Windsor	34	45	46	54	46	54	52	41	+7
St. Pius X	16	19	29	26	21	36	29	23	+7
<b>TOTAL</b>	<b>479</b>	<b>526</b>	<b>598</b>	<b>579</b>	<b>599</b>	<b>616</b>	<b>579</b>	<b>586</b>	<b>+107</b>

% Yield from total graduating class	27.6%	28.6%	30.7%	30.1%	29.2%	29.6%	28.0%	26.0%
-------------------------------------	-------	-------	-------	-------	-------	-------	-------	-------

\* Comparison data only available from 1997 to 2001.  
# Seckman's first graduating class in 1999.

The table on this page summarizes the fall enrollment of recent high school graduates from area high schools for the last eight years.

The last column on the right summarizes the cumulative change from 1994 to 2000, and the total row at the bottom of the table summarizes the number of enrollments by year. Overall enrollment has increased by 107 students since 1994

The "% Yield ..." row shows the percentage of graduates enrolling each fall. The percentage of high school graduates enrolling at Jefferson increased, but lately has been decreasing over the past four years. The eight year average is 28.7%.

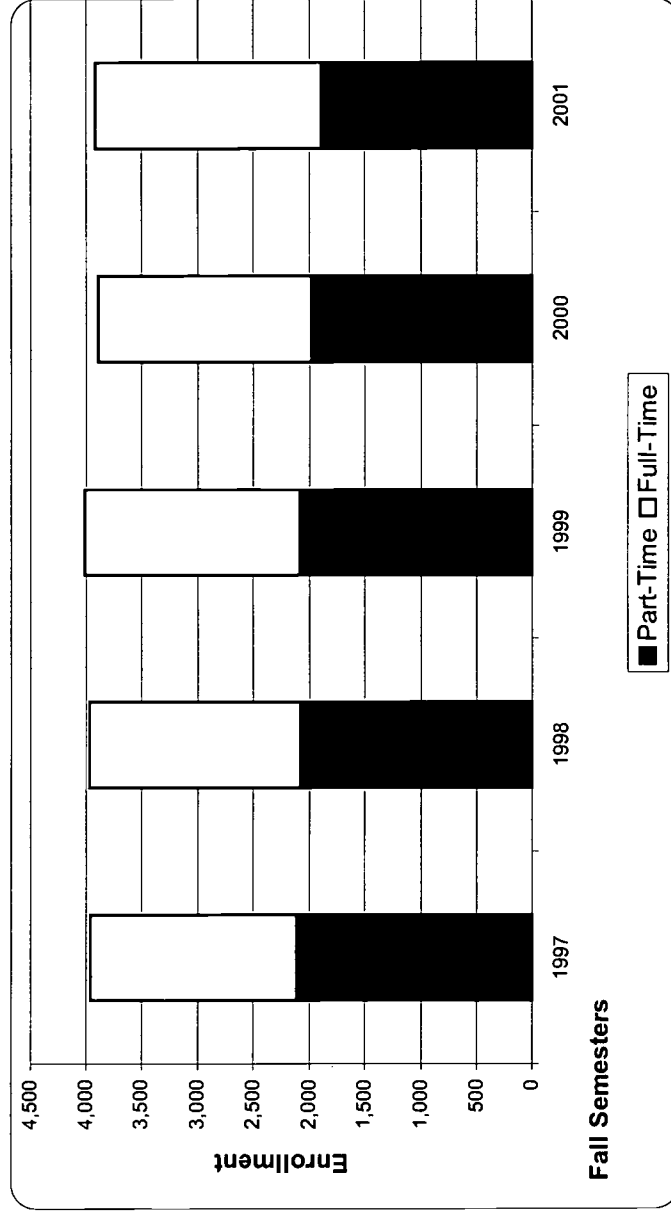
9/24/2001

## Section 2: Total Student Body

### 2.1 Fall Semesters: Full-Time, Part-Time, and Total Headcount

Year	*Full-Time #	%	Part-Time #	%	Total Headcount
1997	1,848	46.6%	2,115	53.4%	3,963
1998	1,896	47.7%	2,080	52.3%	3,976
1999	1,928	48.1%	2,084	51.9%	4,012
2000	1,907	49.0%	1,982	51.0%	3,889
2001	2,027	51.7%	1,890	48.3%	3,917

Note: \* "Full-time" is a student who is taking 12 or more credit hours.



The ratio of full-time to part-time students has steadily risen over the past five years as full-time students increase and part-time students decrease.

Total headcount enrollment had been increasing slowly over the past five fall terms until 2000. Headcount enrollment is up by 28 students this fall.

Several factors influence enrollment at community colleges, but foremost is the economy and unemployment rate. A strong economy and low unemployment rate depresses community college enrollments since jobs are easy to find. Furthermore, in the past few years, there has been increasing competition for students from other public and private institutions.

9/21/2001

Source: Census Date Banner Report WSCRENRL

## Section 2: Total Student Body

### 2.2 Gender of Students

Gender	Fall Terms					
	1997		1998		1999	
	#	%	#	%	#	%
Female	2,252	56.8%	2,273	57.2%	2,331	58.1%
Male	1,711	43.2%	1,703	42.8%	1,681	41.9%
Total	3,963	100.0%	3,976	100.0%	4,012	100.0%
					3,889	100.0%
					3,917	100.0%

The ratio of males to females is approximately six females to four males. This ratio has been constant for more than ten years.

### 2.3 Age of Students

Age Group	Fall Terms					
	1997		1998		1999	
	#	%	#	%	#	%
< 20	1,801	45.4%	1,728	43.5%	1,837	45.8%
20 - 24	690	17.4%	856	21.5%	862	21.5%
25 - 34	705	17.8%	623	15.7%	608	15.2%
35 +	743	18.7%	687	17.3%	700	17.4%
Unknown	24	0.6%	82	2.1%	5	0.1%
Total	3,963	100.0%	3,976	100.0%	4,012	100.0%
					3,889	100.0%
					3,917	100.0%

The average age of the student body is now 25.3 years of age. The average age of the student body has declined by 3 years in the past decade. In 1991, it was 28.5.

Note: Average Age, Fall 2001 = 25.3

Average Female Age, Fall, 2001 = 26.5

Average Male Age, Fall, 2001 = 23.7

### 2.4 Student Ethnicity

Ethnicity	Fall Terms					
	1997		1998		1999	
	#	%	#	%	#	%
Nonresident Alien	1	0.0%	7	0.2%	24	0.6%
Black, non-Hispanic	35	0.9%	24	0.6%	30	0.7%
Amer.Indian/Alask.Nat.	18	0.5%	26	0.7%	21	0.5%
Asian/Pacific Islander	16	0.4%	18	0.5%	13	0.3%
Hispanic	37	0.9%	26	0.7%	26	0.6%
White, non-Hispanic	3,519	88.8%	3,277	82.4%	3,643	90.8%
Race/ethnicity unknown	337	8.5%	598	15.0%	255	6.4%
Total	3,963	100.0%	3,976	100.0%	4,012	100.0%
					3,889	100.0%
					3,917	100.0%

The minority enrollment this fall is 3%. This percentage has remained relatively constant over the years.

9/21/2001

## Section 2: Total Student Body

### 2.5 Total Enrollment by Class

Fall Term	Freshman	Sophomore	Other	Total
1997	2,818	812	333	3,963
1998	2,781	805	390	3,976
1999	2,805	939	268	4,012
2000	2,680	977	232	3,889
2001	2,668	1,020	229	3,917

Source: Census Date Banner Report WSCREENRL

### 2.6 Degree-Seeking Enrollment by Class

Fall Term	Freshman	Sophomore	Other	Total
1997	1,688	722	270	2,680
1998	2,268	738	335	3,341
1999	2,618	908	250	3,776
2000	2,306	941	205	3,452
2001	2,349	966	178	3,493

### 2.7 Non Degree-Seeking Enrollment by Class

Fall Term	Freshman	Sophomore	Other	Total
1997	1,130	90	63	1,283
1998	513	67	55	635
1999	201	33	20	254
2000	374	36	27	437
2001	325	58	51	434

The three tables on this page summarize fall enrollment figures for the past five years by student classification – freshman, sophomore, or other status.

Total enrollment shows a slight decline in the number of freshman this year (12 fewer students), but an increase of 43 sophomore students.

There is a slight increase in degree-seeking freshman this fall term (41 more total students).

The last table on this page summarizes the non degree-seeking students by class. Fewer students are non degree-seeking since a concerted effort was made to encourage new students to declare a major intent.

9/21/2001

11

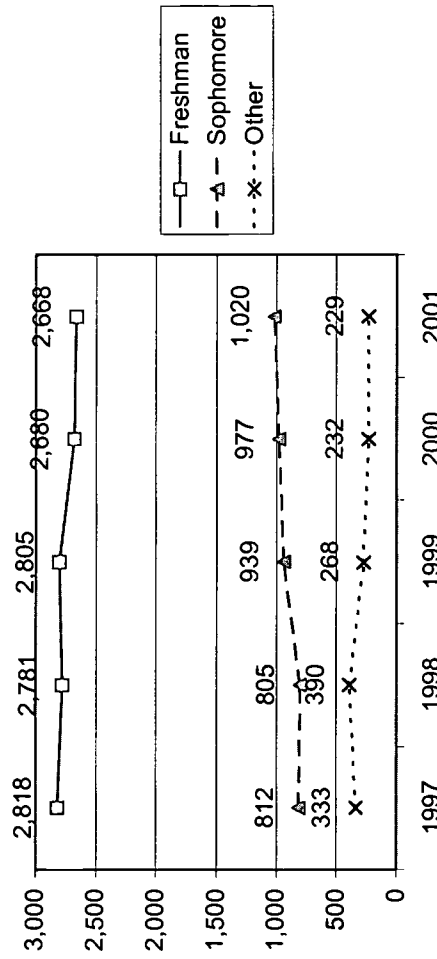
## Section 2: Total Student Body

### 2.8 Percent of Change in Class Status

Enrollment Category	Freshman	Sophomore	Other	Total
<b>Total</b>				
1 yr. Fall '00 - Fall '01	-0.4%	4.4%	-1.3%	0.7%
5 yr. Fall '97 - Fall '01	-5.3%	25.6%	-31.2%	-1.2%
<b>Degree-Seeking</b>				
1 yr. Fall '00 - Fall '01	1.9%	2.7%	-13.2%	1.2%
5 yr. Fall '97 - Fall '01	39.2%	33.8%	-34.1%	30.3%
<b>Non Degree-Seeking</b>				
1 yr. Fall '00 - Fall '01	-13.1%	61.1%	88.9%	-0.7%
5 yr. Fall '97 - Fall '01	-71.2%	-35.6%	-19.0%	-66.2%

Note: (1) Formula for calculating percent of change = ((current value - previous value)/previous value)

Five-Year Total Enrollment Trends  
of Freshmen, Sophomores, and Others



Source: Banner Table WSFBCEMS & Previous Census Date Reports from Prime.

The data on this page summarize the changes in fall term student enrollments by class status. The table on the left reveals that there is a slight increase in fall 2001 enrollment thanks to the increased numbers of sophomores. Fall enrollment is down 1.2% compared with the fall enrollment five years ago.

Degree-seeking students are also up 1.2% over last year's figures. The five year comparison is somewhat misleading in that significant changes were incorporated in the recording of "educational intents" when the new BANNER MIS system was implemented. The same is true for the non degree-seeking category.

9/21/2001

## Section 2: Total Student Body

## 2.9 Fall Term Credit Hour Generation by Enrollment Type

Enrollment Type	Fall Term Credit Hours				2001	2000	1 yr % change	1 yr % change	1 yr # change
	1998	1999	2000	2001					
Full-Time Students	26,790	27,299	26,802	28,423			6.1%	6.0%	1,621
Part-Time Students	11,850	11,868	10,797	10,576			-10.8%	-2.1%	-222
<b>Total</b>	<b>38,640</b>	<b>39,167</b>	<b>37,599</b>	<b>38,998</b>			<b>0.9%</b>	<b>3.7%</b>	<b>1,399</b>

## 2.10 Fall Term Credit Hour Generation by Student Classification

Student Classification	Fall Term Credit Hours				2001	2000	1 yr % change	1 yr % change	1 yr # change
	1998	1999	2000	2001					
New Freshman	16,808	16,637	15,390	15,863			-5.6%	3.1%	473
Other Freshman	11,125	10,574	10,196	10,738			-3.5%	5.3%	542
Sophomores	9,200	9,986	10,369	10,793			17.3%	4.1%	424
Others	1,507	1,971	1,644	1,605			6.5%	-2.4%	-40
<b>Total</b>	<b>38,640</b>	<b>39,167</b>	<b>37,599</b>	<b>38,998</b>			<b>0.9%</b>	<b>3.7%</b>	<b>1,399</b>

## 2.11 Fall Term Credit Hour Generation by Division

Division	Fall Term Credit Hours				2001	2000	1 yr % change	1 yr % change	1 yr # change
	1998	1999	2000	2001					
Business	6,705	6,859	6,452	6,435			-4.0%	-0.3%	-17
Communication/Fine Arts	8,195	8,622	8,176	8,801			7.4%	7.6%	625
Math/Sciences	7,584	7,819	8,010	8,338			9.9%	4.1%	328
Occupational/Health Sciences	2,157	2,052	2,199	1,909			-11.5%	-13.2%	-290
Social Sciences	8,653	8,725	7,858	8,554			-1.1%	8.9%	696
Technology	5,346	5,090	4,904	4,961			-7.2%	1.2%	57
<b>Total</b>	<b>38,640</b>	<b>39,167</b>	<b>37,599</b>	<b>38,998</b>			<b>0.9%</b>	<b>3.7%</b>	<b>1,399</b>

Data for these tables were taken from Census Date Banner Report WSCRENRL

The three tables on this page summarize student credit hour generation at fall term census dates.

The first table shows an overall increase of 1,621 student credit hours (3.72%) between fall 2000 and fall 2001. The increase in credit hours for full-time students offsets the decline in part-time student credit hour generation.

The second table reveals that sophomore credit hour generation has increased by 17% over the last four years suggesting that retention efforts are having a positive effect.

As depicted in the third table, the math/science division has shown consistent growth over the past four years. Communications/Fine Arts has shown growth in three of the four years.

10/22/2001

## Section 2: Total Student Body

2.12 Fall Term Credit Hour Generation by Student Type

Student Type	Fall Term Credit Hours			2001		4 yr % change	1 yr % change	1 yr # change
Continuing	16,879	16,673	16,906	17,155	17,155	1.6%	1.5%	249
DE-Combination ATS/DE	156	94	12	135	135	-13.5%	1025.0%	123
DE-ATS	1,444	1,561	1,284	1,310	1,310	-9.3%	2.0%	26
DE-High School	1,797	1,784	1,394	1,382	1,382	-23.1%	-0.9%	-13
DE-Other	14	85	139	135	135	864.3%	-2.9%	-4
New First Time	13,582	13,234	12,669	12,971	12,971	-4.5%	2.4%	302
Provisional Continuing	0	0	34	1	1	--	-97.1%	-33
Provisional New	0	0	162	230	230	--	42.0%	68
Returning	3,151	4,155	2,906	3,300	3,300	4.7%	13.5%	394
Special	0	0	0	0	0	--	--	0
Transfer	1,444	1,583	2,093	2,381	2,381	64.9%	13.7%	288
Undeclared	113	0	0	0	0	-100.0%	--	0
<b>Total</b>	<b>38,580</b>	<b>39,167</b>	<b>37,599</b>	<b>38,998</b>	<b>38,998</b>	<b>1.1%</b>	<b>3.7%</b>	<b>1,399</b>

Data for this table were taken from Census Date Banner Report WSCRENRL

The table on this page summarizes fall term student credit hours by student type.

The high school dual enrollment programs are once again growing after a one year decline.

Continuing students, new first-time students, returning students, and transfer-in students account for the four largest credit hour generation categories. All four of these student categories are showing positive increases in credit hour generation this year.

10/22/2001



2.13 Student Headcount, Credit Hours, and FTE by School Term

School Term	Headcount	Credit Hours	FTE
<b>FY 2001-2002</b>			
Summer 2001	1,152	4,934	822
Fall 2001	3,917	38,998	2,600
Spring 2002	na	na	na
Total	incomplete		
Undup. Hdnt.	incomplete		incomplete
Annual FTE			
<b>FY 2000-2001</b>			
Summer 2000	1,190	5,031	839
Fall 2000	3,889	37,599	2,507
Spring 2001	3,437	33,456	2,230
Total	8,516	76,086	5,576
Undup. Hdnt.	5,119		
Annual FTE			2,536
<b>FY 1999-2000</b>			
Summer 1999	1,131	4,677	780
Fall 1999	4,012	39,167	2,611
Spring 2000	3,663	35,177	2,345
Total	8,806	79,021	5,736
Undup. Hdnt.	5,279		
Annual FTE			2,634
<b>FY 1998-99</b>			
Summer 1998	1,111	4,675	779
Fall 1998	3,976	38,640	2,576
Spring 1999	3,368	33,293	2,220
Total	8,455	76,608	5,575
Undup. Hdnt.	5,072		
Annual FTE			2,554
<b>FY 1997-98</b>			
Summer 1997	1,103	4,938	823
Fall 1997	3,963	38,188	2,546
Spring 1998	3,376	33,036	2,202
Total	8,442	76,162	5,571
Undup. Hdnt.	5,157		
Annual FTE			2,539

School Term	Headcount	Credit Hours	FTE
<b>FY 1996-97</b>			
Summer 1996	1,034	4,919	820
Fall 1996	3,934	38,306	2,554
Spring 1997	3,366	33,773	2,252
Total	8,334	76,998	5,626
Undup. Hdnt.	5,102		
Annual FTE			2,567
<b>FY 1995-96</b>			
Summer 1995	1,184	5,795	963
Fall 1995	3,783	37,507	2,500
Spring 1996	3,216	32,610	2,174
Total	8,183	75,912	5,637
Undup. Hdnt.	5,005		
Annual FTE			2,530
<b>FY 1994-95</b>			
Summer 1994	1,235	5,819	970
Fall 1994	3,962	39,566	2,638
Spring 1995	3,360	33,479	2,232
Total	8,557	78,864	5,840
Undup. Hdnt.	5,311		
Annual FTE			2,629
<b>FY 1993-94</b>			
Summer 1993	1,290	6,668	1,111
Fall 1993	3,943	40,894	2,726
Spring 1994	3,528	35,898	2,393
Total	8,761	83,460	6,230
Undup. Hdnt.	5,459		
Annual FTE			2,782
<b>Change:</b>			
Sum. 1993 - Sum. 2000	-8%	-25%	-25%
Fall 1993 - Fall 2000	-1%	-8%	-8%
Spr. 1993 - Spr. 2000	4%	-2%	-2%

Notes: (1) Fall and Spring FTEs are derived by dividing the total term hours by 15.

Summer FTEs are derived by dividing the total term hours by 6.

Annual FTE is calculated as the total hours divided by 30.

(2) Figures in this table differ from IPEDS & DHE Reporting in that these numbers include "auditing" students, and the numbers are "as of the College's Census Date."

After a slight decline in fall enrollment last year, Fall 2001 student enrollment has increased somewhat. Enrollment had been increasing for the four preceding years prior to fall 2000.

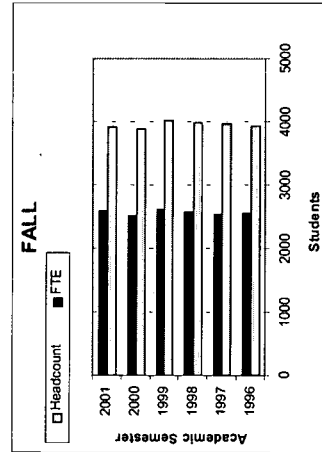
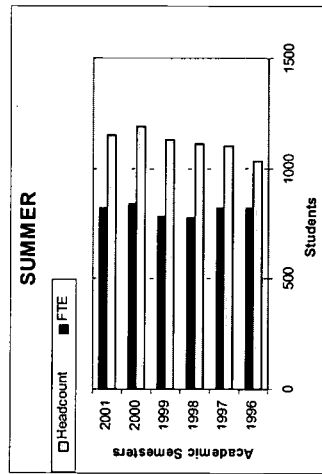
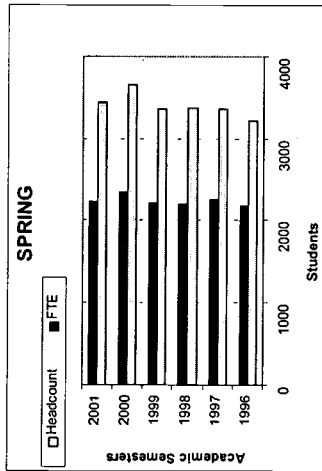
Full-Time Equivalent (FTE) students have increased by 93 compared with fall 2000. This means that students are enrolling for more hours on average.

Compared with enrollment figures eight years ago, student FTE's are down 25% in summer, 8% in fall, and 2% in the spring.

10/22/2001



## 2.14 Headcount Enrollment and FTE by School Term



These charts depict the change in headcount enrollment and student FTE by school term for the last five years.

The five-year trends are not encouraging, although there was a 3.7% increase in credit hours and FTE students this fall.

Growth in students and FTE students has been relatively flat for the past five years in spite of favorable demographics in the county. The area-wide economic prosperity with its abundance of jobs may be depressing the local college enrollment.

10/22/2001

## 2.15 Percent of Change in Headcount and FTE

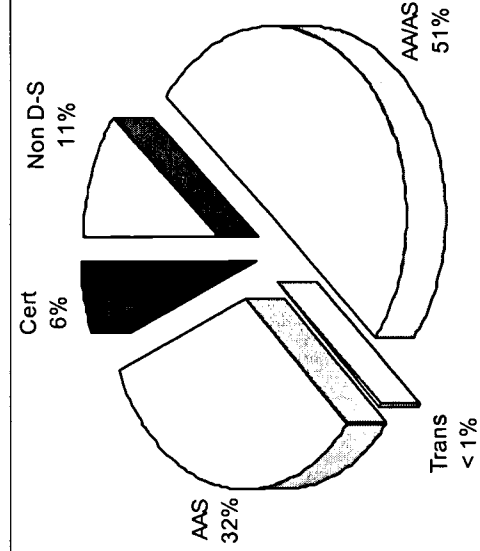
School Term		Headcount	FTE
1-yr. Change	Summer 2000 to Summer 2001	-3.2%	-2.0%
5-yr. Change	Summer 1997 to Summer 2001	4.4%	-0.1%
1-yr. Change	Fall 2000 to Fall 2001	0.7%	3.7%
5-yr. Change	Fall 1997 to Fall 2001	-1.1%	-1.8%
1-yr. Change	Spring 2000 to Spring 2001	-6.2%	-4.9%
5-yr. Change	Spring 1997 to Spring 2001	2.1%	-1.0%

Source: Banner Table WSFBCENS & Previous Census Date Reports from Prime.

## Section 2: Total Student Body

2.16 Student Enrollment by Degree Sought

Degree Code	Description	# of Students	Gender	Avg. Age
000000	Non Degree-Seeking	424	F 249 M 175	34.2 28.2
AA	Associate of Arts	1,892	F 1,259 M 633	23.7 20.5
AAS	Associate of Applied Science	1,271	F 680 M 591	25.8 22.8
AS	Associate of Science	78	F 11 M 67	20.1 20.0
CERT	Certificate 2 yr	119	F 7 M 112	28.6 25.5
CERT1	Certificate <1 yr	10	F 8 M 2	24.2 26.5
CERT2	Certificate 1<2 yr	112	F 66 M 46	24.8 27.4
TRANS	Transfer Credits Only	10	F 10 M 0	24.3
Total Students		3,916		



This table examines the distribution of students enrolled by the type of degree or award they are seeking.

Most students intend to earn and Associate of Arts (n = 1,892 or 48.3%) or an Associate of Applied Science (n = 1,271 or 32.5%). Nearly twice as many females are seeking and Associate of Arts as compared with men.

However, men predominate in the 2-yr certificate programs (CERT).

On average, the oldest students are non degree-seeking.

The pie chart graphically depicts the distribution of the students' degree intentions.

10/22/2001

17

### 2.17 Student Enrollment by Major

Major Code	Description & CIP Code	# of Students	Gender	Avg. Age
0000	None	421	F 248 M 173	34.2 28.1
ACT	Accounting Technology	44	F 40 M 4	27.6 38.4
APR	Apprenticeship Training	3	F 0 M 3	30.0
AUT	Automotive Technology	59	F 1 M 58	16.5 19.5
CDD	Computer Aided Drafting/Design	94	F 21 M 73	23.7 20.1
CIS	Computer Information Systems	322	F 149 M 173	30.5 24.5
CRJ	Criminal Justice	15	F 6 M 9	18.5 21.3
CVL	Civil/Construction Technology	17	F 3 M 14	33.6 19.5
ECE	Early Childhood Education	71	F 71 M 0	21.1
EGR	Liberal Arts (Pre-Engineering)	77	F 11 M 66	20.1 19.8
ELC	Electronics	82	F 6 M 76	21.4 20.9
EMT	Emergency Medical Technology	30	F 19 M 11	24.0 20.4
FST	Fire Science Technology	42	F 1 M 41	19.2 27.7
HRA	Heating/Refrigeration/Air Cond	53	F 0 M 53	25.3

Major Code	Description	# of Students	Gender	Avg. Age
HRM	Hotel Restaurant Management	5	F 5 M 0	20.3
IND	Industrial maintenance Tech	20	F 0 M 20	28.3
LEA	Law Enforcement Academy	1	F 1 M 0	21.4
MGT	Business Management	143	F 89 M 54	23.9 23.2
MTC	Machine Tool/CNC Programming	52	F 4 M 48	28.7
NMJ	No major (Liberal Arts)	1897	F 1261 M 636	23.7 20.5
OST	Office Systems Technology	62	F 61 M 1	24.1
PAH	Pre-Allied Health	10	F 10 M 0	33.0
PAR	Pre-Allied Health	6	F 4 M 2	27.1 26.5
PNE	Practical Nursing	41	F 39 M 2	26.0
PNR	Pre-Nursing	122	F 117 M 5	26.4 27.4
PTI	Police Training Institute	72	F 14 M 58	24.1 26.5
PVT	Pre-Veterinary Technology	38	F 34 M 4	23.7
RNR	Nursing	31	F 30 M 1	28.1 29.8
VAT	Veterinary Technology	41	F 41 M 0	23.2
WLD	Welding Technology	45	F 4 M 41	25.6 20.8
		Total Students:	3,916	

Although the term "major" is not the same as at a four-year bachelor level institution, it is still useful to examine the "major intentions" of community college students. This table shows the distribution of the students' major field of study by gender and age.

The major code "NMJ" is used for those students enrolled in the Liberal Arts courses leading to an Associate of Arts or Associate of Science degree.

10/23/2001

2.18 Student Enrollment by Program Code

Program Code	# of Students	Gender	Avg. Age
AA	1,893	F 1,259 M 634	23.7 20.4
AAS	2	F 1 M 1	22.3 24.6
AAS-ACT	34	F 33 M 1	28.6 37.9
AAS-APR	3	F 0 M 3	30.0
AAS-AUT	40	F 1 M 39	16.5 19.4
AAS-CDD-CDA	62	F 14 M 48	23.1 19.3
AAS-CDD-CDM	18	F 4 M 14	22.9 19.1
AAS-CIS-ASP	71	F 37 M 34	31.8 26.1
AAS-CIS-MCN	235	F 101 M 134	29.8 24.3
AAS-CIS-WEB	15	F 10 M 5	34.7 19.6
AAS-CRJ	13	F 5 M 8	18.5 21.8
AAS-CVL	12	F 3 M 9	33.6 19.8
AAS-ECE	70	F 70 M 0	21.0
AAS-ELC-ETC	18	F 2 M 16	17.1 19.8
AAS-ELC-ETI	17	F 0 M 17	20.4
AAS-ELC-ETT	42	F 4 M 38	23.5 20.9
AAS-EMT	5	F 4 M 1	29.5 25.7
AAS-EMT-PAR	21	F 13 M 8	22.5 19.3
AAS-FST	35	F 1 M 34	19.2 28.0
AAS-HRA	21	F 0 M 21	21.4

Program Code	# of Students	Gender	Avg. Age
AAS-HRM	4	F 4	20.3
AAS-IND	11	F 11	27.0
AAS-MGT	135	F 84 M 51	24.1 22.5
AAS-MTC	36	F 4 M 32	26.7 23.3
AAS-OST-EXC	24	F 24	26.9
AAS-OST-LEG	18	F 18	20.5
AAS-OST-MTR	12	F 11 M 1	23.3 33.0
AAS-OST-WPR	5	F 5 M 0	26.0
AAS-PNR	121	F 116 M 5	26.4 27.4
AAS-PTI	30	F 4 M 26	20.1 26.0
AAS-PVT	38	F 34 M 4	23.7
AAS-RNR	31	F 30 M 1	28.1 29.8
AAS-VAT	41	F 41	23.2
AAS-WLD	31	F 2 M 29	17.5 19.5
AS	78	F 11 M 67	20.1 20.0
CERT-ACT	10	F 7 M 3	22.7 38.5
CERT-AUT	19	F 0 M 19	19.6
CERT-CDA	9	F 3 M 6	28.0 27.4
CERT-CDM	4	F 0 M 4	20.4
CERT-CRJ	2	F 1 M 1	18.8 17.4

Program Code	# of Students	Gender	Avg. Age
CERT-CVL	5	F 0 M 5	19.2
CERT-ECE	2	F 2	24.7
CERT-EMT	7	F 5 M 2	25.2 26.5
CERT-ETC	5	F 0 M 5	25.3
CERT-FST	7	F 0 M 7	25.9
CERT-HRA	32	F 0 M 32	27.8
CERT-HRM	1	F 1	20.4
CERT-IND	9	F 0 M 9	29.8
CERT-LEA	1	F 1	21.4
CERT-MGT	8	F 5 M 3	19.4 34.4
CERT-MTC	16	F 0 M 16	27.5
CERT-OAS	3	F 3 M 0	22.5
CERT-PAR	3	F 1 M 2	27.9
CERT-PNE	41	F 39 M 2	25.9 36.5
CERT-PTI	43	F 11 M 32	25.4 26.8
CERT-WLD	14	F 2 M 12	33.7 23.9
PRIME	1	F 0 M 1	53.5
TRANS	10	F 10 M 0	24.3
UN	423	F 249 M 174	34.2 28.0
Total Students:			3,917

Program codes combine the degree level being sought (e.g., AA, AS, CERT) with the major field and with the specialty area within the major field if one exists. The table on this page reveals the variety of academic and technical programs offered at Jefferson College.

Approximately one-half of the student body is in the Associate of Arts (AA) or Associate of Science (AS) program. Gender and age distributions should be of particular interest to teaching faculty and admissions recruiters.

“UN” means the student’s program is unknown.

10/23/2001

## Section 2: Total Student Body

## 2.19 High Schools Attended

High School	Fall 1997 #	Fall 1997 %	Fall 1998 #	Fall 1998 %	Fall 1999 #	Fall 1999 %	Fall 2000 #	Fall 2000 %	Fall 2001 #	Fall 2001 %
Crystal City	125	3.1%	125	3.2%	114	2.8%	99	2.5%	103	2.6%
De Soto	323	8.1%	337	8.5%	342	8.5%	321	8.3%	325	8.3%
Festus	285	7.2%	265	6.7%	286	7.1%	271	7.0%	311	7.9%
Fox	472	11.8%	464	11.7%	406	10.1%	361	9.3%	324	8.3%
G.E.D.	286	7.2%	285	7.2%	313	7.8%	252	6.5%	329	8.4%
Grandview	110	2.8%	83	2.1%	89	2.2%	99	2.5%	98	2.5%
Herculaneum	136	3.4%	148	3.7%	129	3.2%	127	3.3%	151	3.9%
Hillsboro	354	8.9%	354	8.9%	369	9.2%	335	8.6%	390	10.0%
Northwest	412	10.3%	394	10.0%	365	9.1%	333	8.6%	334	8.5%
St. Pius X	87	2.2%	81	2.0%	99	2.5%	99	2.5%	109	2.8%
Seckman					78	1.9%	109	2.8%	148	3.8%
Windsor	143	3.6%	190	4.8%	201	5.0%	203	5.2%	174	4.4%
Subtotal	2,733	68.6%	2,726	68.9%	2,791	69.6%	2,609	67.1%	2,796	71.4%
Other area high schools										
Ste. Genevieve	86	2.2%	97	2.5%	98	2.4%	109	2.8%	97	2.5%
Potosi	33	0.8%	31	0.8%	47	1.2%	52	1.3%	51	1.3%
Valle	23	0.6%	25	0.6%	30	0.7%	29	0.7%	20	0.5%
St. Louis area	321	8.1%	253	6.4%	337	8.4%	307	7.9%	343	8.8%
Subtotal	463	11.6%	406	10.3%	512	12.8%	497	12.8%	511	13.0%
All other high Schools	790	19.8%	824	20.8%	709	17.7%	783	20.1%	610	15.6%
Grand Total	3,986	100.0%	3,956	100.0%	4,012	100.0%	3,889	100.0%	3,917	100.0%

Source: EMSAS Fall Enrollment Files

This table summarizes the distribution of enrolled students by the last high school attended.

This fall, over 70% of the student body has graduated from Jefferson County high schools or the GED program.

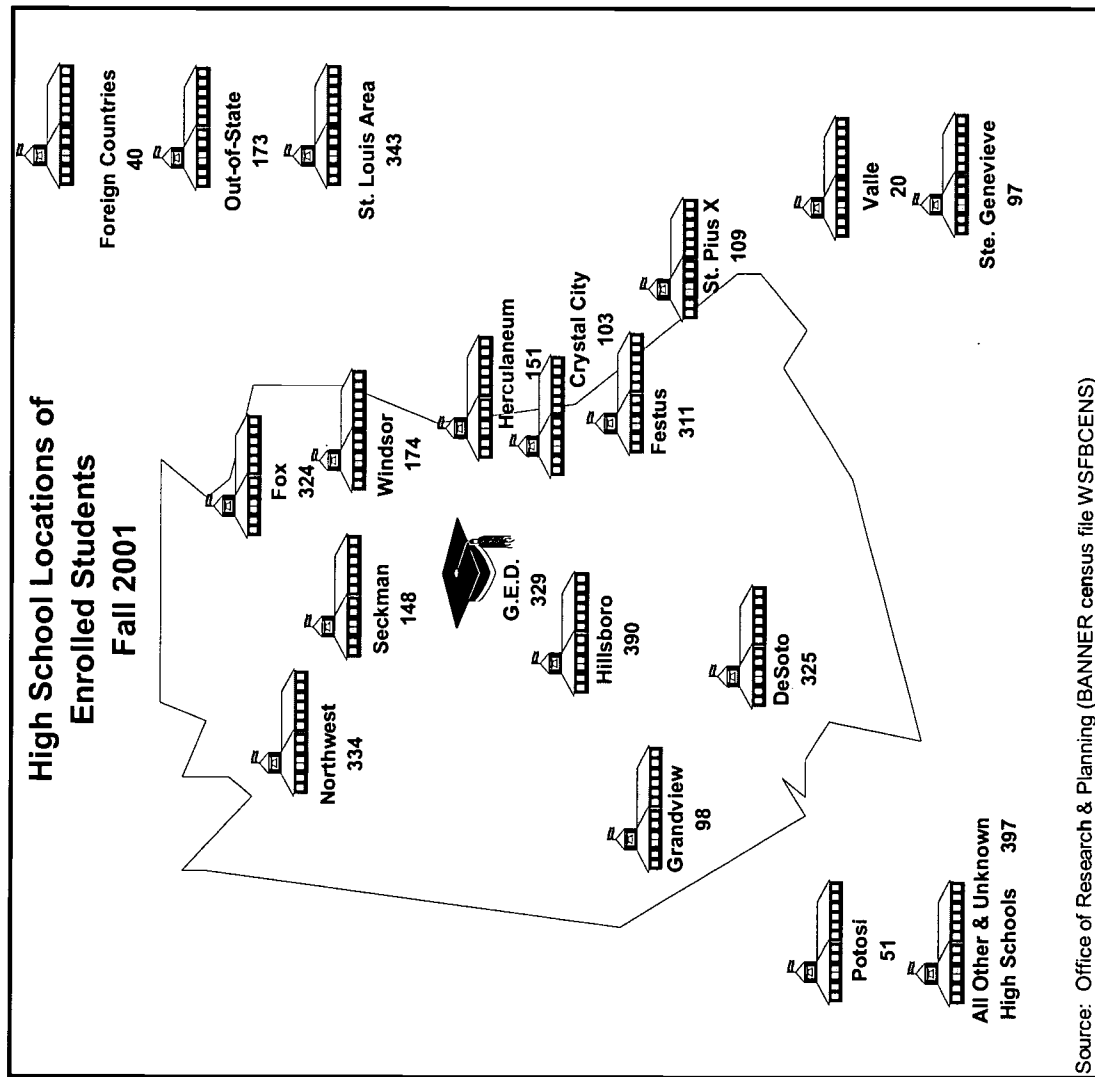
The fact that nearly 30% of the students enrolled have graduated from high schools outside of the

county attests to the the continued high rate of in-migration into the county and the attractiveness of the course offerings.

10/23/2001

## Section 2: Total Student Body

### 2.20 High School Locations of Enrolled Students, Fall 2001



Source: Office of Research & Planning (BANNER census file WSFBCENS)

The map on this page depicts the high school locations and the number of high school graduates enrolled at Jefferson College this fall school term. Although Fox, Hillsboro, Northwest, DeSoto, and Festus are the largest feeder high schools for enrolled students this fall term, all county high schools are represented in the student body.

The 397 students from "all other and unknown" high schools is yet another reflection of the high rates of in-migration into Jefferson County.

The high school equivalency program (GED) continues to be a major source of students who complete their high school education and enroll at Jefferson college for further education and training.

10/23/2001

21

## Section 3: Degree-Seeking Students

## 3.1 Full-Time and Part-Time Degree-Seeking Students

Headcount	Fall 1997		Fall 1998		Fall 1999		Fall 2000		Fall 2001	
	#	%	#	%	#	%	#	%	#	%
Part-Time	1,094	40.8%	1,609	48.2%	1,881	49.8%	1,834	53.1%	1,545	44.3%
Full-Time	1,586	59.2%	1,732	51.8%	1,895	50.2%	1,618	46.9%	1,946	55.7%
Total	2,680	100.0%	3,341	100.0%	3,776	100.0%	3,452	100.0%	3,491	100.0%

Full Time = 12 or more credit hours

## 3.2 Degree-Seeking Students by Gender

Gender	Fall 1997		Fall 1998		Fall 1999		Fall 2000		Fall 2001	
	#	%	#	%	#	%	#	%	#	%
Female	1,514	56.5%	1,913	57.3%	2,205	58.4%	2,026	58.7%	2,039	58.4%
Male	1,166	43.5%	1,428	42.7%	1,571	41.6%	1,426	41.3%	1,452	41.6%
Total	2,680	100.0%	3,341	100.0%	3,776	100.0%	3,452	100.0%	3,491	100.0%

## 3.3 Degree-Seeking Students by Age Group

Age Group	Fall 1997		Fall 1998		Fall 1999		Fall 2000		Fall 2001	
	#	%	#	%	#	%	#	%	#	%
< 20	1,051	39.2%	1,457	43.6%	1,789	47.4%	1,599	46.3%	1,612	46.2%
20 - 24	580	21.6%	755	22.6%	825	21.8%	749	21.7%	868	24.9%
25 - 34	475	17.7%	522	15.6%	566	15.0%	471	13.6%	513	14.7%
35 +	453	16.9%	598	17.9%	592	15.7%	513	14.9%	498	14.3%
Unknown	121	4.5%	9	0.3%	4	0.1%	120	3.5%	0	0.0%
Total	2,680	100.0%	3,341	100.0%	3,776	100.0%	3,452	100.0%	3,491	100.0%

## 3.4 Ethnicity of Degree-Seeking Students

Ethnicity	Fall 1997		Fall 1998		Fall 1999		Fall 2000		Fall 2001	
	#	%	#	%	#	%	#	%	#	%
Black	29	1.1%	22	0.7%	29	0.8%	32	0.9%	24	0.7%
Am.Ind./Alask.Nat.	15	0.6%	23	0.7%	20	0.5%	24	0.7%	19	0.5%
White	2,400	89.6%	2,715	81.3%	3,437	91.0%	3,201	92.7%	3,272	93.7%
Hispanic	26	1.0%	24	0.7%	24	0.6%	19	0.6%	27	0.8%
Asian/Pac.Is.	9	0.3%	16	0.5%	12	0.3%	9	0.3%	13	0.4%
Nonresident Alien	1	0.0%	7	0.2%	22	0.6%	20	0.6%	25	0.7%
Unknown	200	7.5%	534	16.0%	232	6.1%	147	4.3%	111	3.2%
Total	2,680	100.0%	3,341	100.0%	3,776	100.0%	3,452	100.0%	3,491	100.0%

Source: Banner Table WSFBCENS &amp; Previous Census Date Reports from Prime.

Degree-seeking students account for 88.8% of the total body. This is down from the 94% in the fall 1999 school term. The high percentage of degree-seeking students within the student body is due in large part to the increased emphasis on academic advising for students. Students are receiving more assistance from faculty advisors in choosing a major and planning their course of study at an earlier point in time.

Since degree-seeking students represent the majority of the student body, their characteristics closely resemble those of the entire student body.

10/13/2000



## Section 3: Degree-Seeking Students

### 3.5 First-Time, Degree-Seeking Students By Gender

Gender	Fall 1997 #	Fall 1997 %	Fall 1998 #	Fall 1998 %	Fall 1999 #	Fall 1999 %	Fall 2000 #	Fall 2000 %	Fall 2001 #	Fall 2001 %
Female	444	52.0%	548	51.9%	581	57.0%	484	52.3%	525	54.4%
Male	410	48.0%	507	48.1%	438	43.0%	442	47.7%	440	45.6%
Total	854	100%	1,055	100%	1,019	100%	926	100%	965	100%

### 3.6 First-Time, Degree-Seeking Students By Age Group

Age Group	Fall 1997 #	Fall 1997 %	Fall 1998 #	Fall 1998 %	Fall 1999 #	Fall 1999 %	Fall 2000 #	Fall 2000 %	Fall 2001 #	Fall 2001 %
< 20	606	71.0%	743	70.4%	758	74.4%	712	76.9%	713	73.9%
20 - 24	95	11.1%	134	12.7%	89	8.7%	92	9.9%	120	12.4%
25 - 34	90	10.5%	36	3.4%	88	8.6%	56	6.0%	81	8.4%
35 +	63	7.4%	89	8.4%	84	8.2%	48	5.2%	51	5.3%
Unknown	0	0.0%	53	5.0%	0	0.0%	18	1.9%	0	0.0%
Total	854	100%	1,055	100%	1,019	100%	926	100%	965	100%

### 3.7 Ethnicity of First-Time, Degree-Seeking Students

Ethnicity	Fall 1997 #	Fall 1997 %	Fall 1998 #	Fall 1998 %	Fall 1999 #	Fall 1999 %	Fall 2000 #	Fall 2000 %	Fall 2001 #	Fall 2001 %
Black	11	1.3%	6	0.6%	8	0.8%	11	1.2%	5	0.5%
Am.Ind./Alask.Nat.	5	0.6%	8	0.8%	3	0.3%	4	0.4%	2	0.2%
White	754	88.3%	950	90.0%	971	95.3%	875	94.5%	927	96.1%
Hispanic	12	1.4%	6	0.6%	5	0.5%	6	0.6%	4	0.4%
Asian/Pac.Is.	4	0.5%	8	0.8%	3	0.3%	3	0.3%	5	0.5%
Nonresident Alien	0	0.0%	5	0.5%	6	0.6%	10	1.1%	9	0.9%
Unknown	68	8.0%	72	6.8%	23	2.3%	17	1.8%	13	1.3%
Total	854	100.0%	1,055	100.0%	1,019	100.0%	926	100.0%	965	100.0%

Source: Banner Table WSFBCENS & Previous Census Date Reports from Prime.

First-time, degree-seeking students are those who are enrolling in post-secondary education for the first time after graduating from high school. First-time students account for 24.6% of the total student body in the fall 2001 semester. Lat fall (2000) this cohort accounted for 23.8% of the student body.

First-time, degree-seeking students tend to be much younger than the general student body since most of these students are recent high school graduates. However, the gender and ethnicity of this cohort closely resembles that of the total student body.

10/24/2001



**Section 3: Degree-Seeking Students****3.8 Full-Time, First-Time, Degree-Seeking Students By Gender**

Gender	Fall 1997 #	Fall 1997 %	Fall 1998 #	Fall 1998 %	Fall 1999 #	Fall 1999 %	Fall 2000 #	Fall 2000 %	Fall 2001 #	Fall 2001 %
Female	318	50.0%	403	52.7%	452	56.7%	375	50.7%	414	53.4%
Male	318	50.0%	362	47.3%	345	43.3%	365	49.3%	362	46.6%
Total	636	100.0%	765	100.0%	797	100.0%	740	100.0%	776	100.0%

Full-Time = 12 or more credit hours

**3.9 Full-Time, First-Time Degree-Seeking Students By Age Group**

Age Group	Fall 1997 #	Fall 1997 %	Fall 1998 #	Fall 1998 %	Fall 1999 #	Fall 1999 %	Fall 2000 #	Fall 2000 %	Fall 2001 #	Fall 2001 %
< 20	515	81.0%	641	83.8%	685	85.9%	639	86.4%	653	84.1%
20 - 24	48	7.5%	60	7.8%	49	6.1%	66	8.9%	73	9.4%
25 - 34	48	7.5%	32	4.2%	35	4.4%	20	2.7%	39	5.0%
35 +	25	3.9%	30	3.9%	28	3.5%	8	1.1%	11	1.4%
Unknown	0	0.0%	2	0.3%	0	0.0%	7	0.9%	0	0.0%
Total	636	100.0%	765	100.0%	797	100.0%	740	100.0%	776	100.0%

**3.10 Ethnicity of Full-Time, First-Time, Degree-Seeking Students**

Ethnicity	Fall 1997 #	Fall 1997 %	Fall 1998 #	Fall 1998 %	Fall 1999 #	Fall 1999 %	Fall 2000 #	Fall 2000 %	Fall 2001 #	Fall 2001 %
Black	9	1.4%	6	0.8%	6	0.8%	10	1.4%	5	0.6%
Am. Ind./Alask. Nat.	2	0.3%	4	0.5%	2	0.3%	3	0.4%	1	0.1%
White	565	88.8%	693	90.6%	763	95.7%	700	94.6%	743	95.7%
Hispanic	10	1.6%	5	0.7%	4	0.5%	5	0.7%	3	0.4%
Asian/Pac. Is.	3	0.5%	3	0.4%	2	0.3%	3	0.4%	3	0.4%
Nonresident Alien	0	0.0%	5	0.7%	6	0.8%	8	1.1%	8	1.0%
Unknown	47	7.4%	49	6.4%	14	1.8%	11	1.5%	13	1.7%
Total	636	100.0%	765	100.0%	797	100.0%	740	100.0%	776	100.0%

Source: Banner Table WSFBCENS &amp; Previous Census Date Reports from Prime.

Full-time, first-time, degree-seeking students are those students who are enrolled for 12 or more credit hours, are enrolled in college for the first-time, and who have indicated that they intend to earn a degree or other award from Jefferson College.

This is the traditional cohort of college students and is of special interest to the federal government in their collection and publication of institutional student graduation rates.

This cohort of students is even younger since the overwhelming majority of them are recent high school graduates.

10/24/2001

## Section 3: Degree-Seeking Students

### 3.11 Enrollment Comparison by Degree-Seeking Category

Cohort	Fall 1997 #	Fall 1997 %	Fall 1998 #	Fall 1998 %	Fall 1999 #	Fall 1999 %	Fall 2000 #	Fall 2000 %	Fall 2001 #	Fall 2001 %
Total Enrollment Degree-Seeking Students	3,963	100.0%	3,976	100.0%	4,012	100.0%	3,889	100.0%	3,917	100.0%
First-Time, Degree-Seeking Students	2,680	67.6%	3,341	84.0%	3,776	94.1%	3,452	88.8%	3,491	89.1%
Full-Time, First-Time Degree-Seeking Students	854	21.5%	1,055	26.5%	1,019	25.4%	926	23.8%	965	24.6%
	636	16.0%	765	19.2%	797	19.9%	740	19.0%	776	19.8%

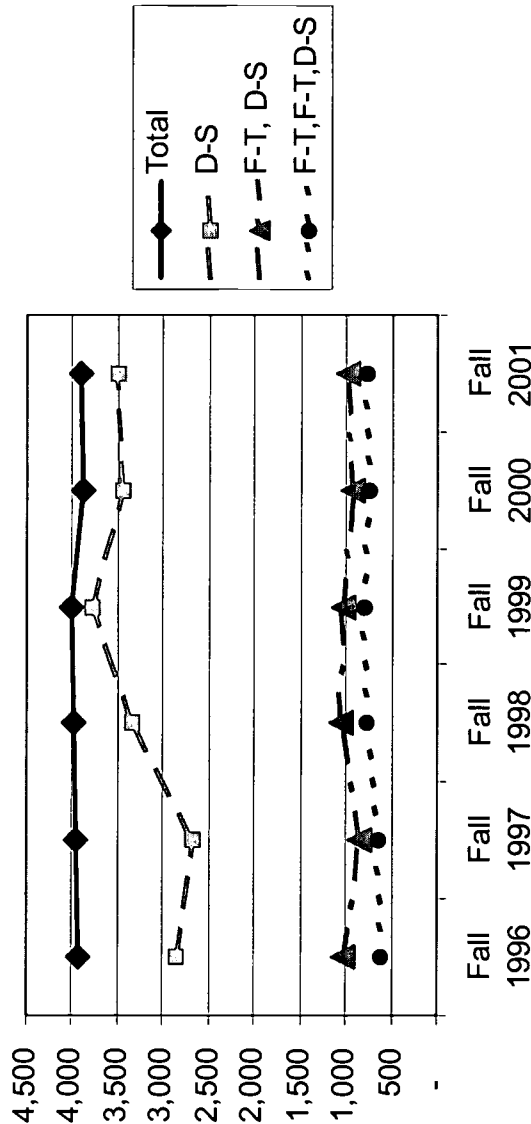
These data compare the enrollment trends in degree-seeking student categories.

The most notable change is the dramatic increase in degree-seeking students over the past three years. As indicated on the previously, this is due to the recently increased emphasis on student academic advising.

Enrollment has increased slightly this fall term with commensurate increases in the degree-seeking students.

10/24/2001

### Enrollment by Degree-Seeking Status



Source: Banner Table WSBFCENS & Previous Census Date Reports from Prime.

## Section 4: Area Technical School

### 4.1 High School Level Enrollment by Program Area

Program Area	Total Enrollment	Gender		Ethnicity		Special Populations		
		Male	Female	White	Minority	Disabled	Disadvan.	
Building Repair Technology	36	34	2	35	1	12	11	
Building Trades I	37	37	0	37	0	12	10	
Building Trades II	29	29	0	29	0	6	15	
Culinary Arts/Chefs' Training	34	14	20	33	1	7	15	
Health Service Assistant	23	0	23	23	0	2	6	
Metal Fabrication	32	31	1	31	1	11	13	
Coop. Industrial Education	8	5	3	8	0	2	4	
<b>Total</b>	<b>199</b>	<b>150</b>	<b>49</b>	<b>196</b>	<b>3</b>	<b>52</b>	<b>74</b>	

Source: Coordinator and Program Secretary, Area Technical School

### 4.2 College Level Enrollment by Program Area

Program Area	Total Enrollment	Gender		Ethnicity		Special Populations		
		Male	Female	White	Minority	Disabled	Disadvan.	
Computer Aided Drafting (CAD) & Design Tech with (Architectural Construction Option) (Mechanical Option)	10	8	2	10	0	0	4	
Automotive Technology	5	5	0	5	0	0	2	
Business Management	19	18	1	19	0	5	10	
Child Care/Early Childhood Education	15	3	12	15	0	1	7	
	32	0	32	31	1	9	9	
Computer Information Systems	27	19	8	27	0	0	10	
Electronics	10	9	1	10	0	0	4	
Heating, Refrigeration, and Air Conditioning	6	6	0	5	1	2	2	
Machine Tool Technology	0							
Welding Technology	11	10	1	11	0	4	5	
	16	15	1	15	1	2	5	
<b>Total</b>	<b>151</b>	<b>93</b>	<b>58</b>	<b>148</b>	<b>3</b>	<b>23</b>	<b>58</b>	

Source: Coordinator and Program Secretary, Area Technical School

Jefferson College continues to offer outstanding career and technical programs in 16 occupational areas. Enrollment for the 2001-2002 school year is 350 students from 11 sending school districts throughout Jefferson County. These programs are located in the new Area Technical School, the Vocational Technical building, and the Technology Center. Students are also located in the two child care facilities on campus.

The Area Technical School is a spacious, new facility that opened during the 1999-2000 school year. It has a total of 32,000 square feet and houses the high school level programs.

The career and technical programs at Jefferson College continue to serve special populations that include individuals with disabilities, economically disadvantaged, nontraditional enrollees, and students with other barriers. These groups compose more than 50% of the total students served in all programs.

10/24/2001

**Section 4: Area Technical School****4.3 Enrollment by Home School - High School Level Programs**

High School	Students Enrolled	Enrollment Quota	Per Cent of Utilization
Crystal City	4	6	67%
De Soto	26	35	74%
Festus	15	23	65%
Fox	8	35	23%
Grandview	14	11	127%
Herculaneum	13	17	76%
Hillsboro	37	35	106%
Kingston	11	7	157%
Northwest	34	42	81%
Seckman	25	27	93%
Windsor	12	20	60%
<b>Total</b>	<b>199</b>	<b>258</b>	<b>77%</b>

Source: Coordinator and Program Secretary, Area Technical School

**4.4 Enrollment by Home School - College Level Programs**

High School	Students Enrolled	Enrollment Quota	Per Cent of Utilization
Crystal City	5	11	45%
De Soto	31	25	124%
Festus	11	20	55%
Fox	18	26	69%
Grandview	10	12	83%
Herculaneum	3	15	20%
Hillsboro	27	27	100%
Kingston	2	10	20%
Northwest	27	46	59%
Seckman	11	21	52%
Windsor	6	20	30%
<b>Total</b>	<b>151</b>	<b>233</b>	<b>65%</b>

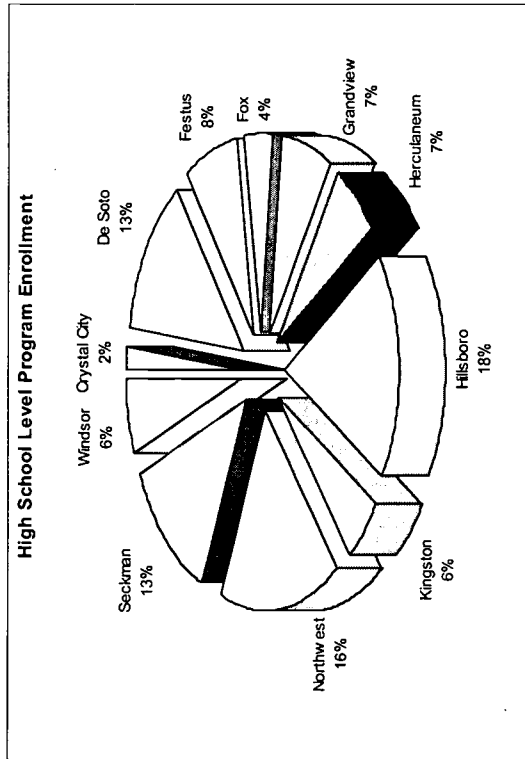
High Schools are allocated a number of enrollment slots for both the high school and the college level programs. As the two tables on the left show, some schools are able to over-utilize the enrollment quotas when they are underutilized by other schools. More importantly, there is participation at both program levels by all area high schools.

High School students are expected to maintain a high academic and technical skill level of achievement while enrolled in Jefferson College. The integration of academic and technical curriculum provides students with an opportunity to apply theoretical knowledge in mathematics and communication arts in the technical education environment.

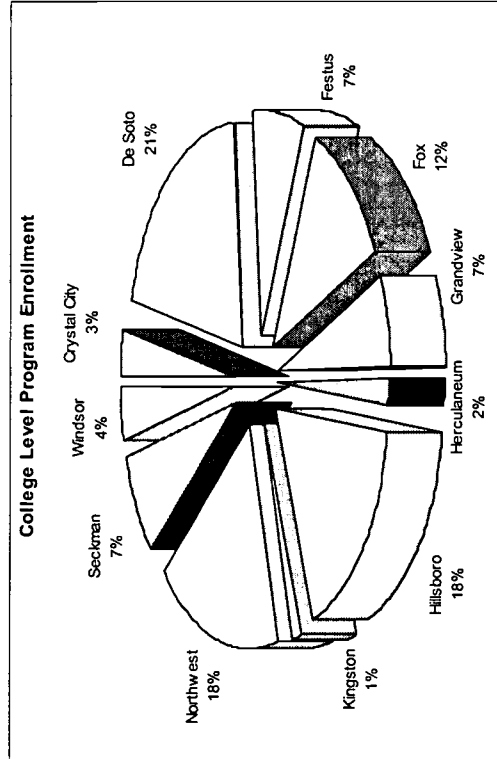
10/24/2001

## Section 4: Area Technical School

### 4.5 High School Program Enrollments by High School



### 4.6 College Program Enrollments by High School



These two pie charts graphically depict the distribution of students in the high school level and college level vocational programs at the Area Technical School by home high school. In general, the distribution of allocated student slots is relative to the size of the home school.

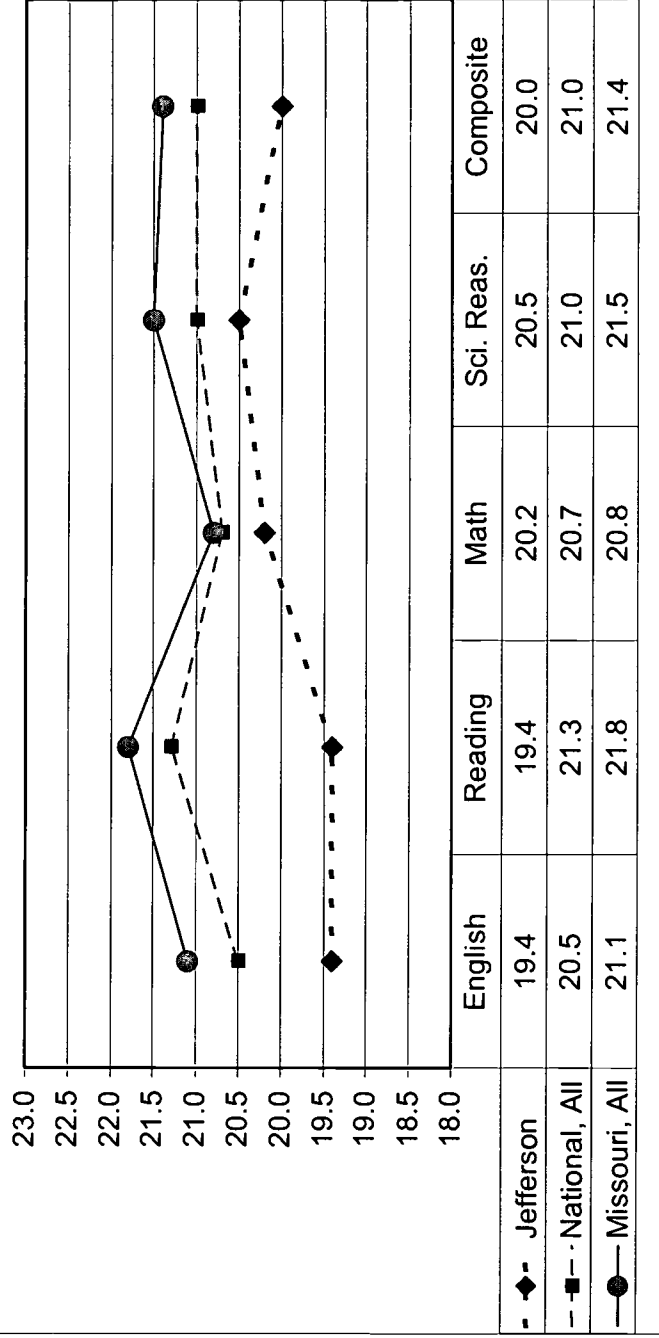
87% of the students enrolled last year mastered at least 80% of the skills essential to finding employment or continuing their education in the area in which they received training.

226 ATS graduates completed their program of studies and were placed in employment, continued their education at the post secondary level, or entered the military last year. In all 57% of the students went on to further their education with the majority enrolling at Jefferson College.

10/24/2001

## 5.1 ACT Scores for 2000-2001 Enrolled Freshmen

**ACT Testing**  
Average Scores  
Enrolled Students, 2000-2001



Notes: Scale is truncated for clarity. The ACT scale is 1 - 36.  
Source: ACT Class Profile Service  
Jefferson College n = 485 (Fall 2001 enrolled students)

Although an admissions test is not required at Jefferson College, an increasing number of students are taking the ACT. Out of the freshman class of 2000-2001, 485 students who took the ACT enrolled at Jefferson College. This number is down slightly from the number who took the ACT and enrolled last year.

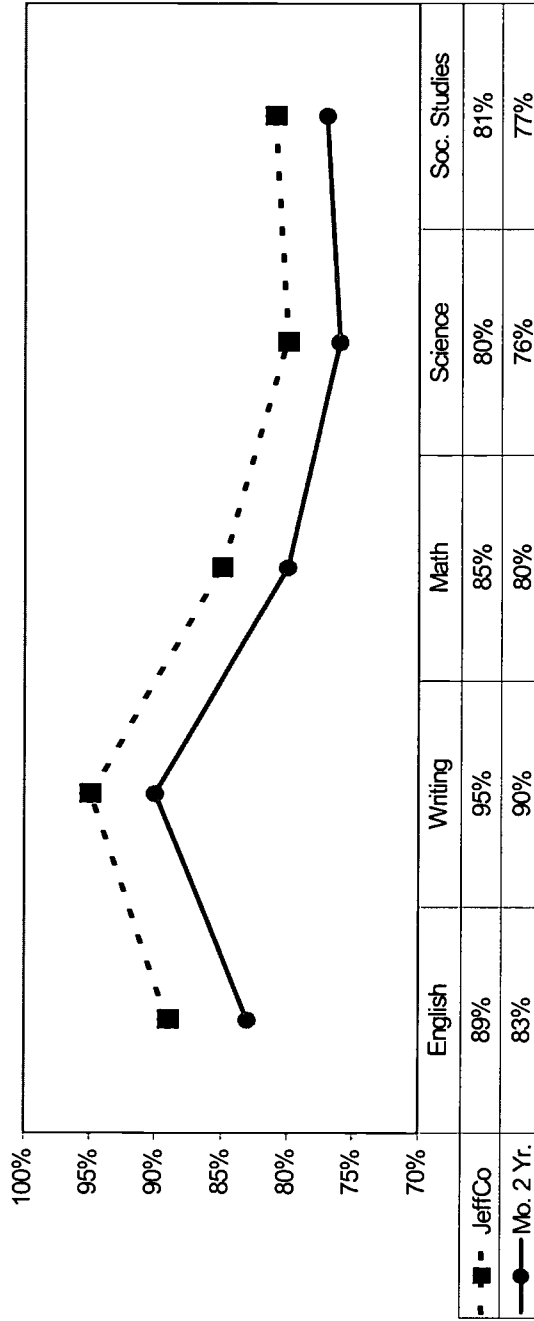
The chart on the left shows that students enrolling at Jefferson score approximately one point lower than Missouri and National test-takers. Although the current data are not available, previous data have shown that enrolling students at Jefferson do score slightly higher than those at other 2-yr. Colleges.

10/24/2001

## 5.2 CBASE Testing - Passing Rates By Subject

### CBASE Passing Rates by Subject

Percent Passing on First Attempt:  
Cumulative through April, 2001



Jefferson College n = 583

The CBASE test is an assessment of general education achievement that is taken by many of Jefferson's pre-education majors prior to transferring to a four-year institution to complete a bachelor's degree program in teacher education.

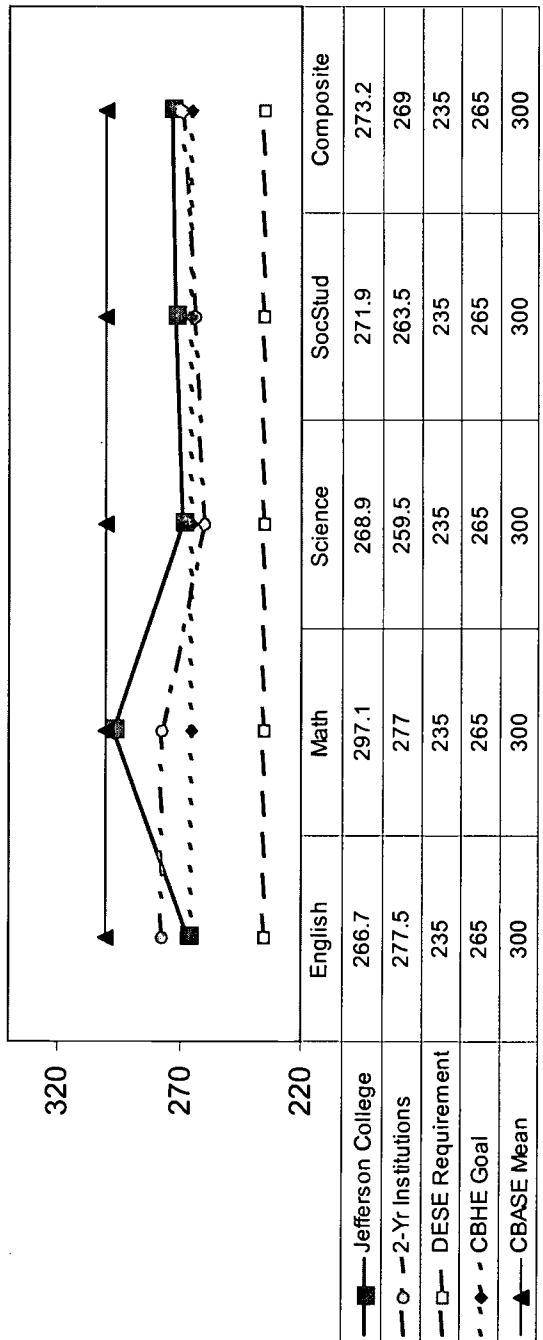
One measure of success on the CBASE test is the percentage of students who pass each component of the test on the first attempt. The chart to the left demonstrates that Jefferson students historically have a higher passing rate on the first attempt on all sections of the test than their peers in two-year institutions across the state.

10/24/2001

Source: Assessment Resource Center, University of Missouri-Columbia

## 5.3 CBASE Testing – Average Score Comparisons

CBASE Student Outcomes Assessments, Spring 2001



Beginning this past year, the CBASE test has also replaced the college's use of the CAAP to assess the general education outcomes of graduating students.

The chart on the left compares the scores obtained by graduating students compared with several other standards.

The test was originally standardized with a mean score of 300 on each subtest. DESE requires a minimum of 235 on each test for matriculation into teacher's education programs, and CBHE has set a goal of 265 on each subtest for the same purpose. The chart shows that Jefferson graduates are doing quite well in relation to DESE and CBHE standards, and they do well in comparison to students at other two-year institutions, too.

10/24/2001

Source: Assessment Resource Center, University of Missouri-Columbia



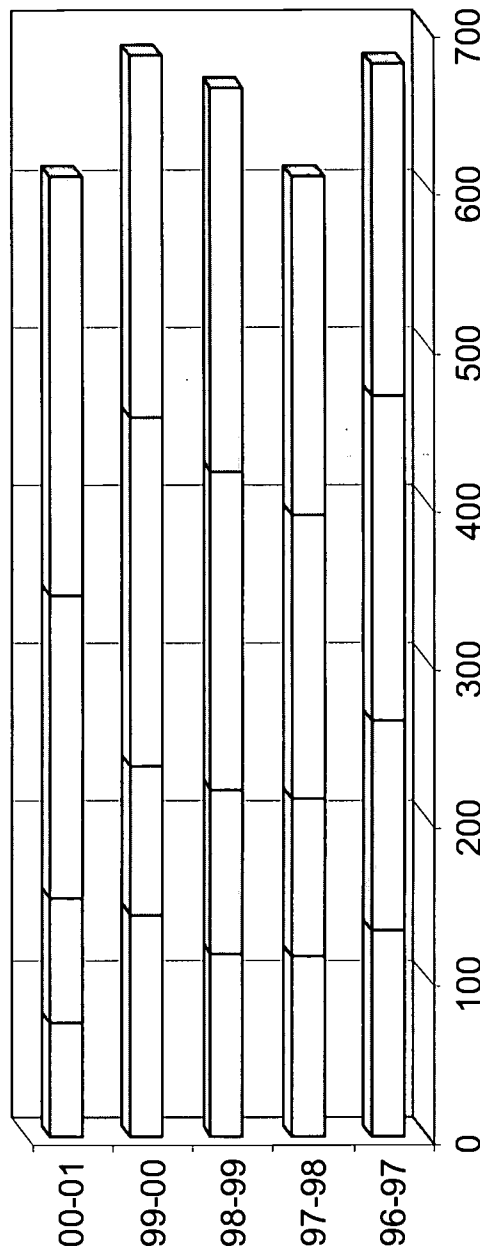
## Section 6: Student Outcomes

### 6.1 Awards Conferred

Award Type	AY 96-97	AY 97-98	AY 98-99	AY 99-00	AY 00-01	5-Year Average
Program Diplomas	131	114	116	141	72	115
Certificates	132	100	104	94	79	102
Associate of Applied Science	205	179	200	220	191	199
Associate of Arts/Associate of Science	210	215	244	229	265	233
<b>Total Awards</b>	<b>678</b>	<b>608</b>	<b>664</b>	<b>684</b>	<b>607</b>	<b>659</b>

Source: EMSAS completers files, 9/14/2001.

- ☐ Program Diplomas  
☐ Associate of Applied Science  
☐ Certificates  
☐ Associate of Arts/Associate of Science



With an average annual unduplicated headcount enrollment of 5,123 students for the past five years, 12.8% of enrolled students have earned an award at Jefferson each year. Last year it was 11.8%. In the last five years, an average of 659 awards were conferred.

This chart visually depicts the proportion of award categories for the past five years. The A.A./A.S. degrees represent the largest single category although, taken all together, vocational-technical awards are numerically the largest.

10/24/2001

## 6.2 Awards Conferred by CIP code Major

Jefferson College Awards Conferred: 199901 - 200103 (Summer 1999 through Spring 2001)					
Major	Description	Concentration	Program	CIP Code	Awards
ACT	Accounting Technology		AAS-ACT	520302	16
ACT	Accounting Technology		CERT-ACT	520302	5
	ACT TOTAL				21
ADT	Architectural Draft/Const Tech		AAS	480199	1
APR	Apprenticeship Training		AAS-APR	489999	4
AUT	Automotive Technology		AAS-AUT	470604	7
AUT	Automotive Technology		CERT-AUT	470604	27
	AUT TOTAL				34
CDD	Computer Aided Drafting/Design	CDA	AAS-CDD-CDA	480199	15
CDD	Computer Aided Drafting/Design	CDA	CERT-CDA	480199	2
CDD	Computer Aided Drafting/Design	CDM	AAS-CDD-CDM	480199	18
CDD	Computer Aided Drafting/Design	CDM	CERT-CDM	480199	5
	CDD TOTAL				40
CIS	Computer Information Systems	ASP	AAS-CIS-ASP	521202	57
CIS	Computer Information Systems	MCN	AAS-CIS-MCN	521202	59
CIS	Computer Information Systems	ASP	DEPT-DIPL2	521202	14
CIS	Computer Information Systems	COB	DEPT-DIPL2	521202	4
	CIS TOTAL				134
CRJ	Criminal Justice		AAS-CRJ	430103	10
CRJ	Criminal Justice		AAS-CRJ-LEA	430103	1
	CRJ TOTAL				11
CVL	Civil/Construction Technology		AAS-CVL	480199	9
ECE	Early Childhood Education		AAS-ECE	200202	22
ECE	Early Childhood Education		CERT-ECE	200202	5
	ECE TOTAL				27
EGR	Liberal Arts		AS	140101	3
ELC	Electronics	ETC	AAS-ELC-ETC	150303	7
ELC	Electronics	ETC	CERT-ETC	150303	1
ELC	Electronics	ETI	AAS-ELC-ETI	150303	20
ELC	Electronics	ETT	AAS-ELC-ETT	150303	32
	ELC TOTAL				60
EMT	Emergency Medical Technology	PAR	AAS-EMT	510904	2
EMT	Emergency Medical Technology	PAR	AAS-EMT-PAR	510904	8
EMT	Emergency Medical Technology		AAS-EMT	510904	9
EMT	Emergency Medical Technology		CERT-EMT	510904	1
EMT	Emergency Medical Technology	PAR	DEPT-DIPL3	510904	23
	EMT TOTAL				43
					14.3

Table 6.2, on this page and the following page, summarizes the awards conferred to Jefferson College graduates for the past three years by CIP code majors. The table contains the major code, its text description, the major concentration code if applicable, the CIP code, the number of awards conferred in the past three years, and the average number of awards conferred per year for the past three years.

A major "total" field is provided for those majors with different course concentrations. In this way, one can view the number of awards for the major as a whole as well as the separate concentration areas.

10/24/2001

## 6.2 Awards Conferred by CIP code Major (Continued)

Major	Description	Concentration	Program	CIP Code	Awards	3-Yr Avg.
FFT	Fire Fighter I		DEPT-DIPLOMA	430201	68	22.7
FFT	Fire Fighter II		DEPT-DIPLOMA	430201	53	17.7
FHA	Hazardous Materials Awareness		DEPT-DIPLOMA	430201	21	7.0
FHO	Hazardous Materials Operation		DEPT-DIPLOMA	430201	21	7.0
FOI	Fire Officer I		DEPT-DIPLOMA	430201	19	6.3
FOT	Fire Officer II		DEPT-DIPLOMA	430201	31	10.3
FST	Fire Science Technology		AAS-FST	430201	16	5.3
FST	Fire Science Technology		CERT-FST	430201	5	1.7
	Fire/Haz Total TOTAL			430201	234	78.0
HLT	Health Technologies	MTE	DEPT-DIPLOMA	512601	10	3.3
HRA	Heating/Refrigeration/Air Cond		AAS-HRA	470201	12	4.0
HRA	Heating/Refrigeration/Air Cond		CERT-HRA	470201	49	16.3
	HRA TOTAL				61	20.3
HRM	Hotel Restaurant Management		AAS-HRM	520902	8	2.7
IND	Industrial Maintenance Tech		AAS-IND	470303	2	0.7
IND	Industrial Maintenance Tech		CERT-IND	470303	2	0.7
	IND TOTAL				4	1.3
MDC	Mechanical Drafting/CAD		AAS	480199	1	0.3
MG1	Business Management		AAS-MGT	520101	30	10.0
MG1	Business Management		CERT-MGT	520101	2	0.7
	MGT TOTAL				32	10.7
MTC	Machine Tool/CNC Technology		AAS-MTC	480501	15	5.0
MTC	Machine Tool/CNC Technology		CERT-MTC	480501	21	7.0
	MTC TOTAL				36	12.0
NMJ	Liberal Arts		AA	240101	736	245.3
OST	Office Systems Technology	EXC	AAS-OST-EXC	520401	12	4.0
OST	Office Systems Technology	EXC	AAS-OST-LEG	520401	1	0.3
OST	Office Systems Technology	LEG	AAS-OST-LEG	520401	21	7.0
OST	Office Systems Technology	MTR	AAS-OST-MTR	520401	15	5.0
OST	Office Systems Technology	OAS	CERT-OAS	520401	5	1.7
OST	Office Systems Technology	WPR	AAS-OST-WPR	520401	10	3.3
	OST TOTAL				64	21.3
PNE	Practical Nursing		CERT-PNE	511613	103	34.3
PTI	Police Training Institute		CERT-PTI	430107	7	2.3
RNR	Nursing		AAS-RNR	511601	99	33.0
VAT	Veterinary Technology		AAS-VAT	510808	66	22.0
WLD	Welding Technology		AAS-WLD	480508	8	2.7
WLD	Welding Technology		CERT-WLD	480508	32	10.7
	WLD-TOTAL				40	13.3
Total Awards					1,948	

The table reveals that an average of 649 awards (degrees, certificates, and diplomas) have been conferred to students over the past three years. The Liberal Arts program (major = NMJ) awarding Associate of Arts degrees (A.A.) has been the largest single program conferring an average of 245 degrees each year for the past three years. The Fire Fighter & related programs have averaged 78 awards each year. Computer Information Systems (45 per year) is also a highly productive program area.

10/25/2001

## 6.3 Federal Student Right-To-Know Graduation Rates

Graduation Rate Survey  
Student Right-To-Know Completion/Graduation and Transfer Rates  
1994 - 1997 Student Cohorts

Cohort	Gender		Total Students	Completion Rate in 150% of Normal Time	Transfer Out Rate <sup>(2)</sup>
	Female	Male			
Fall 1994					
All FTFTDS Students <sup>(1)</sup>	303	284	587	28.62%	14.65%
All Student Athletes	10	12	22	68.18%	13.64%
Basketball	4	0	4	25.00%	0.00%
Baseball	0	7	7	28.57%	14.29%
All Other Sports Combined <sup>(3)</sup>	6	5	11	66.67%	11.11%
Tennis	0	5	5	40.00%	20.00%
Volleyball	6	0	6	100.00%	0.00%
Fall 1995					
All FTFTDS Students <sup>(1)</sup>	358	290	648	29.63%	17.75%
All Student Athletes	11	18	29	51.72%	0.00%
Basketball	8	0	8	75.00%	0.00%
Baseball	0	16	16	38.46%	0.00%
All Other Sports Combined <sup>(3)</sup>	3	2	5	40.00%	0.00%
Tennis	0	2	2	0.00%	0.00%
Volleyball	3	0	3	66.67%	0.00%
Fall 1996					
All FTFTDS Students <sup>(1)</sup>	304	324	628	31.85%	13.06%
All Student Athletes	9	19	28	92.86%	0.00%
Basketball	3	0	3	100.00%	0.00%
Baseball	0	12	12	58.33%	0.00%
All Other Sports Combined <sup>(3)</sup>	6	7	13	61.54%	0.00%
Tennis	0	7	7	71.43%	0.00%
Volleyball	6	0	6	50.00%	0.00%
Fall 1997					
All FTFTDS Students <sup>(1)</sup>	318	318	636	31.76%	13.68%
All Student Athletes	6	10	16	68.75%	25.00%
Basketball	4	0	4	0.00%	25.00%
Baseball	0	9	9	55.56%	33.33%
All Other Sports Combined <sup>(3)</sup>	2	1	3	100.00%	0.00%
Tennis	0	1	1	100.00%	0.00%
Volleyball	2	0	2	100.00%	0.00%

Notes:

- 1) FTFTDS = First-time, Full-time, Degree-Seeking Students
- 2) Transfers to institutions other than Missouri Public & Independent institutions are not verified according to federal regulations. Therefore, transfer rates are understated.
- 3) This especially affects student athlete transfer rate reporting.  
Federal regulations require the reporting of "All Other Sports Combined."  
Jefferson College elects to also report individual statistics for Tennis and Volleyball.

Source: Office of Research &amp; Planning

The federal Student Right-To-Know and Campus Security Act requires disclosure of graduation rates for first-time, full-time, degree-seeking students after 150% of their normal completion time. Further, similar rates for student athletes who are receiving athletic financial aid must also be disclosed.

The table on the left summarizes the completion and transfer rates for all FTFTDS students and student athletes for four years. Due to the small numbers of student athletes, some rates can be misleading, but note the consistently high success rates for all student athletes.

These data underestimate the actual success rates because the federal regulations require officially documented verification of student transfers. Now that the institution has joined the national Clearinghouse for student loans, transfer data will be verified for publication beginning next year.

10/25/2001

### 6.3 Federal Student Right-To-Know Graduation Rates--Continued

#### Four-Year Average of Student Right-To-Know Completion/Graduation and Transfer Rates, 1994-1997

Graduation Rate Survey: Four-Year Average of Student Right-To-Know Completion/Graduation and Transfer Rates, 1994-1997 Student Cohorts						
Cohort	Number of Students	Number of Completers	Completion Rate	Number of Transfers	Transfer Rate <sup>(2)</sup>	4-Yr. Total Completion/Transfer Rate
4-year Totals	2,499	762	30.49%	370	14.81%	45.30%
All FTFTDS Students <sup>(1)</sup>	90	48	53.33%	6	6.67%	60.00%
All Student Athletes Fall 1997	636	202	31.76%	87	13.68%	45.44%
All FTFTDS Students <sup>(1)</sup>	16	8	50.00%	4	25.00%	75.00%
All Student Athletes Fall 1996	628	200	31.85%	82	13.06%	44.90%
All FTFTDS Students <sup>(1)</sup>	28	18	64.29%	0	0.00%	64.29%
All Student Athletes Fall 1995	648	192	29.63%	115	17.75%	47.38%
All FTFTDS Students <sup>(1)</sup>	26	13	50.00%	0	0.00%	50.00%
All Student Athletes Fall 1994	587	168	28.62%	86	14.65%	43.27%
All FTFTDS Students <sup>(1)</sup>	20	9	45.00%	2	13.64%	58.64%
All Student Athletes						

The table on the left shows that the total completion & transfer rates for the FTFTDS students and student athletes is 45.3% for the four year period since reporting has been mandated. Again, remember that these data underestimate the actual success rates because the federal regulations require officially documented verification of student transfers.

Note, too, that the completion rates for the subset of student athletes is consistently higher than for that of the entire cohort. Most student athletes transfer to out-of-state institutions after leaving Jefferson, so the transfer rates for student athletes is in reality much higher.

10/25/2001

## 6.4 Jefferson College First-Time Students Enrolled in Other Institutions in Missouri

Transferring to:	6-Year Average	Fall 00	Fall 99	Fall 98	Fall 97	Fall 96	Fall 95
East Central	18.8	14	13	21	21	18	26
Mineral Area College	14.2	12	15	24	17	12	5
St.L.C.C. - Meramec	45.8	43	45	56	42	35	54
Other 2-Yr Institution	13.8	16	17	9	8	14	19
University of Missouri - Columbia	12.7	19	9	6	7	16	19
University of Missouri - Rolla	12.7	12	14	12	14	15	9
University of Missouri - St. Louis	44.2	56	50	48	44	34	33
Harris-Stowe	6.3	6	3	6	4	11	8
SouthEast Missouri	50.8	50	24	56	69	55	51
SouthWest Missouri	14.8	14	20	21	8	6	20
Missouri Baptist	34.2	49	45	30	19	28	34
Maryville	11.5	13	15	10	14	4	13
Webster	16.8	30	16	18	4	12	21
St. Louis University	9.5	10	13	12	4	12	6
Other 4-Yr Institution	31.0	29	33	40	23	39	22
Total	337	373	332	369	298	311	340

Source: CBHE, Statistical Summary of Missouri Higher Education, Tables 72a &amp; b (annual publication).

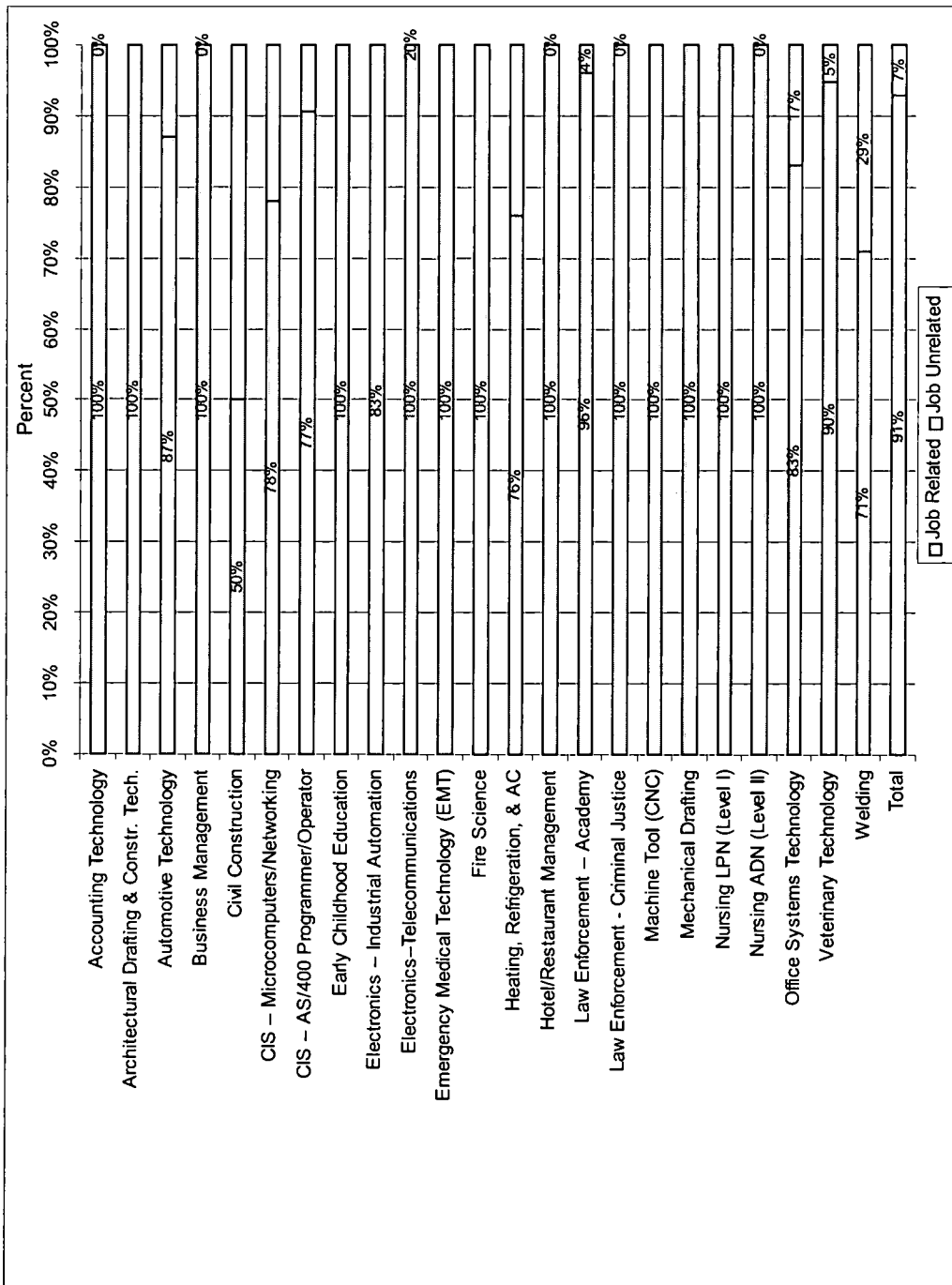
The Missouri

Coordinating Board for Higher Education (CBHE), through the Enhanced Missouri Student Achievement System (EMSAS) reporting system, provides follow-up data for students who first enrolled at Jefferson College.

The table on the left shows that over the past six years, an average of 337 students who first began their college career at Jefferson College have subsequently transferred to another Missouri public or independent institution of higher learning in a fall term. Southeast Missouri State University, University of Missouri - St. Louis, and Missouri Baptist College are the main recipients among the 4-year institutions.

10/25/2001

## 6.5 Percent of 2000 Degree and Certificate Graduates Available for Placement and Employed



Job placement for vocational-technical graduates remains very high. The data represented in the chart at the left is provided by the State Department of Elementary and Secondary Education's Statewide Placement Service. The data show that, for the 300 vo-tech graduates in 2000 who were available for employment, 90% were employed in a job related field after 180 days. An additional 9% were employed in a non-related field for a total of 99% job placement

10/25/2001



## 6.6 Historical Vo-Tech Job Placement Rates

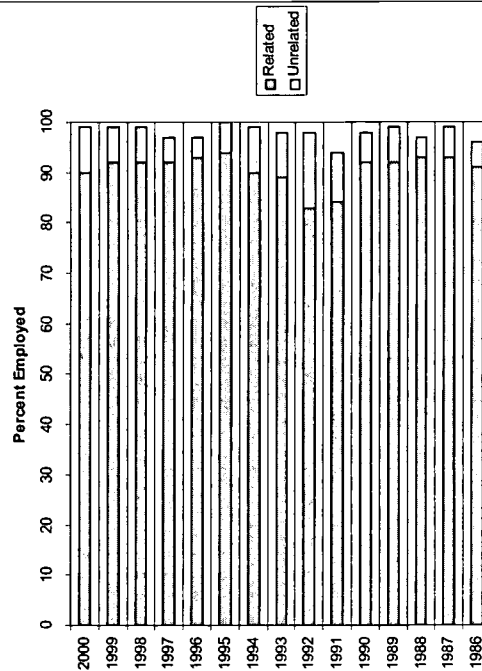
Academic Year	Employed Related	Employed Not Related	Total Placement Percentage
2000	90%	9%	99%
1999	91%	7%	98%
1998	92%	7%	99%
1997	92%	5%	97%
1996	93%	4%	97%
1995	94%	6%	100%
1994	90%	9%	99%
1993	89%	9%	98%
1992	83%	15%	98%
1991	84%	10%	94%
1990	92%	6%	95%
1989	92%	7%	99%
1988	93%	4%	97%
1987	93%	6%	99%
1986	91%	5%	96%

Historically, the placement of Jefferson College Vo-Tech graduates has been very high. In the past fifteen years, the total placement rate has never been lower than 94%.

The data on this page are provided by the Career Services Office from DESE's Statewide Placement Service. The percentages represent the degree and certificate graduates who are available for placement and in employment 180 days after graduation.

10/25/2001

Historical Vo-Tech Job Placement





## Section 7: Jefferson College Arnold

## 7.1 Sections, Enrollment and Credit Hours at Jefferson College Arnold

School Term	Course Sections	Enrollment (seatcount)	Credit Hours	Total Census Credit Hours for Jefferson College	% of All Jefferson College Student Credit Hours Generated at Arnold Facility
<b>FY01-02</b>					
Summer '01	36	369	998	4,934	20.2%
Fall '01	83	1,508	4,474	38,998	11.5%
Spring '02	n.a.	n.a.	n.a.	n.a.	n.a.
<b>Total</b>	incomplete	incomplete	incomplete	incomplete	incomplete
<b>FY00-01</b>					
Summer '00	40	440	1,191	5,031	23.7%
Fall '00	94	1,476	4,403	37,599	11.7%
Spring '01	83	1,229	3,619	33,456	10.8%
<b>Total</b>	217	3,145	9,213	76,086	12.1%
<b>FY99-00</b>					
Summer '99	42	396	1,096	4,677	23.4%
Fall '99	94	1,573	4,810	39,167	12.3%
Spring '00	88	1,326	3,994	35,177	11.4%
<b>Total</b>	224	3,295	9,900	79,021	12.5%
<b>FY98-99</b>					
Summer '98	45	405	1,149	4,675	24.6%
Fall '98	101	1,575	4,712	38,640	12.2%
Spring '99	82	1,124	3,444	33,293	10.3%
<b>Total</b>	228	3,104	9,305	76,608	12.1%
<b>FY 97-98</b>					
Summer '97	46	417	1,142	4,938	23.1%
Fall '97	100	1,612	4,919	38,188	12.9%
Spring '98	97	1,278	3,845	33,036	11.6%
<b>Total</b>	243	3,307	9,906	76,162	13.0%
<b>5 - Year Averages</b>					
Summer Terms	42	405	1,115	4,851	23.0%
Fall Terms	94	1,549	4,664	38,518	12.1%
Spring Terms	88	1,223	3,679	33,747	10.9%
Overall 5 yr. Avg.	231	3,163	9,460	76,975	12.3%

Note: Headcount enrollment is not unduplicated. Some students take courses at both campus locations.

5 yr. averages for spring terms include Spring 1997 (not shown in table).

Source: BANNER table WSFBCEMS and JCA census enrollment reports.

The attendance center at Arnold significantly impacts the total enrollment and student credit hour generation of the College. In spite of the limited parking and classroom space, annual course enrollments continually exceed 3,000. Student Credit hour generation was 9,213 for the 2000-2001 school year, and the first two terms of 2001-2002 are comparable to the first two terms last year.

Since Arnold is an attendance center, lacking comprehensive administrative services and curricular offerings, most students are part-time. Students will also need to take some coursework at Hillsboro in order to earn a degree or certificate.

Summer sessions are particularly productive at Arnold. In the summer, the Arnold site accounts for more than 20% of the College's credit hour generation.

10/25/2001

## 7.2 Profile of Jefferson College, Arnold

Descriptor	Profile	Descriptor	Profile
Facility size	19, 582 square feet	Services	GED testing site Computer courses Vocational courses Continuing Education courses Adult Basic Education courses Student Services Book Store Academic Advising Assessment services Library services
Classroom sizes	6 rooms -- 24 capacity 2 rooms -- 30 capacity 1 room -- 28 capacity 1 room -- 36 capacity 1 Science Lab -- 20 for lab -- 30 for class 3 Computer labs -- 20 capacity 1 Learning Center 1 Literacy Coordinator Office 1 office (part-time faculty)-- 5 desks 1 Full-time faculty office -- 1 desk 1 Faculty lounge 1 GED Learning Center -- 30 capacity	Personnel	1 English Instructor (full-time) 2 Learning Center Instructors (part-time) 4 ABE instructors (part-time)
Parking	186 total spaces	Faculty	Director, Jefferson College Arnold Secretary (full-time) Daytime Receptionist (part-time) Evening/Receptionist (part-time)
Parking vs. Classroom Capacity	Ratio of .53 to 1 (186 parking spaces vs. 352 classroom seats excluding Learning Center and GED)	Staff - Office	1 Day (full-time) 1 evening (full-time) 1 evening (part-time) 1 Saturday (part-time)
		Maintenance	

This table provides an overview of the educational facilities available at the Arnold site. There are 12 classrooms and three computer labs. There is space for 358 students in classes and 60 students in the computer labs. However, there are only 186 parking spaces available.

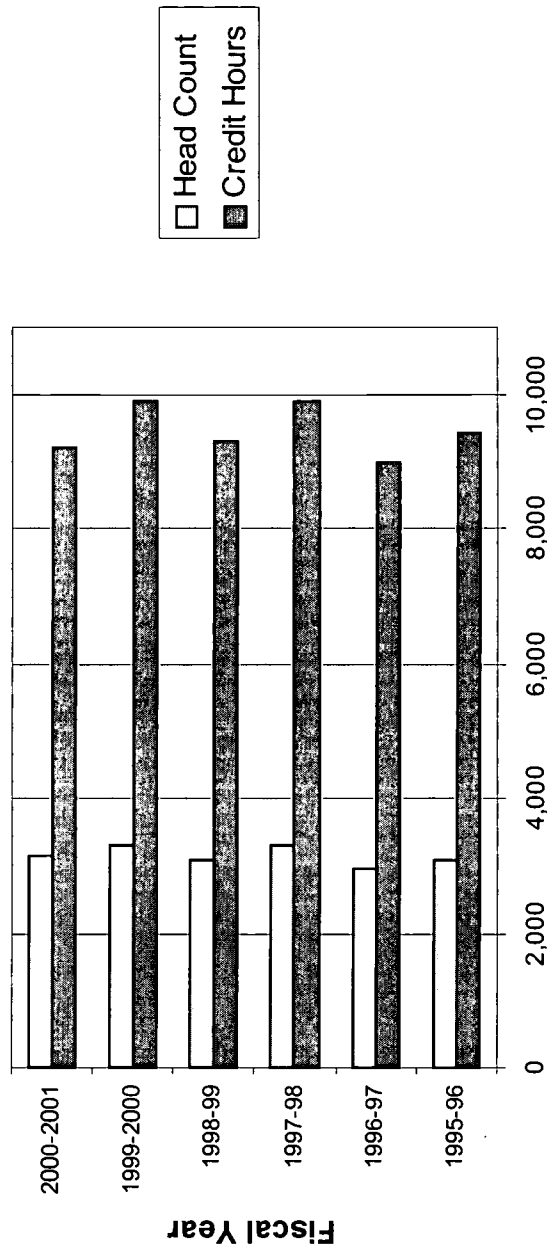
The lack of parking has necessitated creative course scheduling. The Arnold location is quite convenient for commuters traveling to and from the metro St. Louis area, and so "rush hour" classes have been established to accommodate these consumers. Rush hour classes are a convenience for students and help alleviate the parking problems.

10/25/2001

## Section 7: Jefferson College Arnold

### 7.3 Trends in Enrollment and Credit Hours at Jefferson College - Arnold

Enrollment and Credit Hours at JCA



In the past six years, the average headcount enrollment at the Arnold site has been 3,163. The Arnold site has also averaged 9,460 student credit hours generated annually.

Nearly 40% of the students who take course at Jefferson College in Hillsboro also take coursework at the Arnold site. The Arnold site also accounts for 12.3% of all students credit hours generated by the college in a year.

10/25/2001

**Section 8: Student Attendance Patterns****8.1 JCA Student Enrollment by Zip Code****Distinct Student Enrollment by Zip Code at Jefferson College Arnold  
and Fox Senior High School, Fall 2001**

ZIP	Town	Count	ZIP	Count	Town
63010	Arnold	294	36744	1	
63012	Barnhart	69	43447	1	
63016	Cedar Hill	24	49288	1	
63019	Crystal City	20	60640	1	
63020	DeSoto	74	61525	1	
63023	Dittmer	15	61615	1	
63025	Eureka (St. L.)	1	62034	1	St. Louis
63026	Fenton (St. L.)	42	62040	1	St. Louis
63028	Festus	102	62236	1	St. Louis
63047	Hematite	1	63005	1	St. Louis
63048	Herculaneum	7	631xx	30	St. Louis
63049	High Ridge	18	636xx	26	636 = Washington, St. Francois, Ste. Genevieve Counties Cape Girardeau
63050	Hillsboro	47			
63051	House Springs	33			
63052	Imperial	134	63775	2	
63053	Kimmswick	3	total:	68	
63065	Mapaville	1			
63066	Morse Mill	1			
63070	Pevely	14			
		Total:	900		

Note: average age = 29.2 (versus 25.3 for total student body)

This table summarizes the zip code locations of students enrolled in coursework in Arnold.

Of course the largest number of students are from Arnold (zip 63010, but Imperial (63052), Festus (63028), DeSoto (63020), and Barnhart (63012) also have sizable representation.

The fact that students from all areas of the county are taking course at the Arnold facility strongly suggests that the working – commuter population finds the Arnold site to be a convenient facility for courses.

10/25/2001

**Section 8: Student Attendance Patterns****8.2 Annual Attendance by Site by Distinct Students****Jefferson College Student Enrollment from Jefferson County, Fall 2001**

Arnold Campus		Total Student Body
Zip	Town	Avg. Age
63010	Arnold	27.0
63012	Barnhart	25.3
63016	Cedar Hill	23.8
63019	Crystal City	26.3
63020	DeSoto	25.4
63023	Dittmer	25.3
63025	Eureka (St. L.)	26.0
63026	Fenton (St. L.)	26.0
63028	Festus	25.9
63047	Hematite	26.7
63048	Herculaneum	26.3
63049	High Ridge	24.7
63050	Hillsboro	25.1
63051	House Springs	25.9
63052	Imperial	26.4
63053	Kimmswick	21.7
63065	Mapaville	39.5
63066	Morse Mill	24.0
63070	Pevely	23.8
Average Age		25.3

This table summarizes the average of the students taking courses at Arnold with the entire student population (of which the Arnold students are a subset).

Note that, on average, the students at Arnold are three years older than the student body as a whole. This is to be expected if the Arnold facility is attracting more of the older working population that commutes through Jefferson County to the St. Louis metropolitan area for employment.

10/25/2001



**U.S. DEPARTMENT OF EDUCATION**  
*Office of Educational Research and Improvement (OERI)*  
*Educational Resources Information Center (ERIC)*



## NOTICE

### REPRODUCTION BASIS



This document is covered by a signed "Reproduction Release (Blanket)" form (on file within the ERIC system), encompassing all or classes of documents from its source organization and, therefore, does not require a "Specific Document" Release form.



This document is Federally-funded, or carries its own permission to reproduce, or is otherwise in the public domain and, therefore, may be reproduced by ERIC without a signed Reproduction Release form (either "Specific Document" or "Blanket").