

# DOCUMENT RESUME

ED 147 001

JC 760 021

**AUTHOR** Gold, Ben K.  
**TITLE** Some Trends in L.A.C.C. Enrollments, 1960-1977. Research Study #77-14.  
**INSTITUTION** Los Angeles City Coll., Calif.  
**PUB DATE** Dec 77  
**NOTE** 33p.  
**EDRS PRICE** MF-\$0.83 HC-\$2.06 Plus Postage.  
**DESCRIPTORS** Community Colleges; Day Programs; Declining Enrollment; \*Enrollment Influences; \*Enrollment Trends; Evening Programs; Females; \*High School Graduates; Institutional Research; \*Junior Colleges; Males; Part Time Students

## ABSTRACT

An analysis of enrollment trends for Los Angeles City College (LACC) from 1960 to 1977 produced the following observations: (1) day enrollment rose an average of 4% yearly from 1962 to 1974 to a high of almost 24,000, dropping slightly thereafter; (2) evening enrollment has fluctuated without a clear direction; (3) male day enrollment has dropped steadily since 1960 from 60% to 45%; (4) full-time student enrollment has declined from a high of 70% in 1967 to below 50% in 1977, but the percent of continuing students has risen; (5) a consistent 20% of local high school graduates have enrolled over the last 15 years, accounting for 55% of all first-time enrollments in 1967 compared with 45% in 1977; and (6) the percent of the previous year's graduating class from 20 local high schools enrolling at LACC in 1976-77 ranged from 1.5% to 36.8%. In addition to statistical data, a list of events explaining variations in trends is provided, such as college and secondary policy changes and board shifts, establishment or enlargement of campuses, student strikes, fee changes, special programs, and the shift to computer-based information files. (RT)

\*\*\*\*\*  
\* Documents acquired by ERIC include many informal unpublished \*  
\* materials not available from other sources. ERIC makes every effort \*  
\* to obtain the best copy available. Nevertheless, items of marginal \*  
\* reproducibility are often encountered and this affects the quality \*  
\* of the microfiche and hardcopy reproductions ERIC makes available \*  
\* via the ERIC Document Reproduction Service (EDRS). EDRS is not \*  
\* responsible for the quality of the original document. Reproductions \*  
\* supplied by EDRS are the best that can be made from the original. \*  
\*\*\*\*\*

ED147001

LOS ANGELES CITY COLLEGE

"SOME TRENDS IN L.A.C.C. ENROLLMENTS, 1960-1977"

"PERMISSION TO REPRODUCE THIS  
MATERIAL HAS BEEN GRANTED BY

Ben K. Gold

TO THE EDUCATIONAL RESOURCES  
INFORMATION CENTER (ERIC), AND  
USERS OF THE ERIC SYSTEM."

U.S. DEPARTMENT OF HEALTH,  
EDUCATION & WELFARE  
NATIONAL INSTITUTE OF  
EDUCATION

THIS DOCUMENT HAS BEEN REPRODUCED  
EXACTLY AS RECEIVED FROM THE PERSON  
OR ORGANIZATION ORIGINATING IT. POINTS  
OF VIEW OR OPINIONS STATED DO NOT  
NECESSARILY REPRESENT OFFICIAL NATIONAL  
INSTITUTE OF EDUCATION POSITION OR POLICY

Research Study #77-14

JL 780 021

Ben K. Gold  
Research Office  
December, 1977

## "SOME TRENDS IN L.A.C.C. ENROLLMENTS, 1960-1977"

### PURPOSE OF THE STUDY

Research Study #75-2 and #72-1 analyzed various aspects of Los Angeles City College enrollments over the period 1960-1974.

The purpose of the present study is to update some of that information, with special emphasis upon high school sources of L.A.C.C. enrollments.

### PROCEDURE OF THE STUDY

Data for the study were obtained from available L.A.C.C. records and official enrollment forms (CCAF 130 and 131) sent by the Los Angeles Community College District to the State Chancellor's Office. Numbers of high school graduates were obtained from information provided by the Los Angeles Unified District.

### FINDINGS

Data are presented in the forms of graphs, followed by tables showing data on which the graphs were based.

The following graphs are presented:

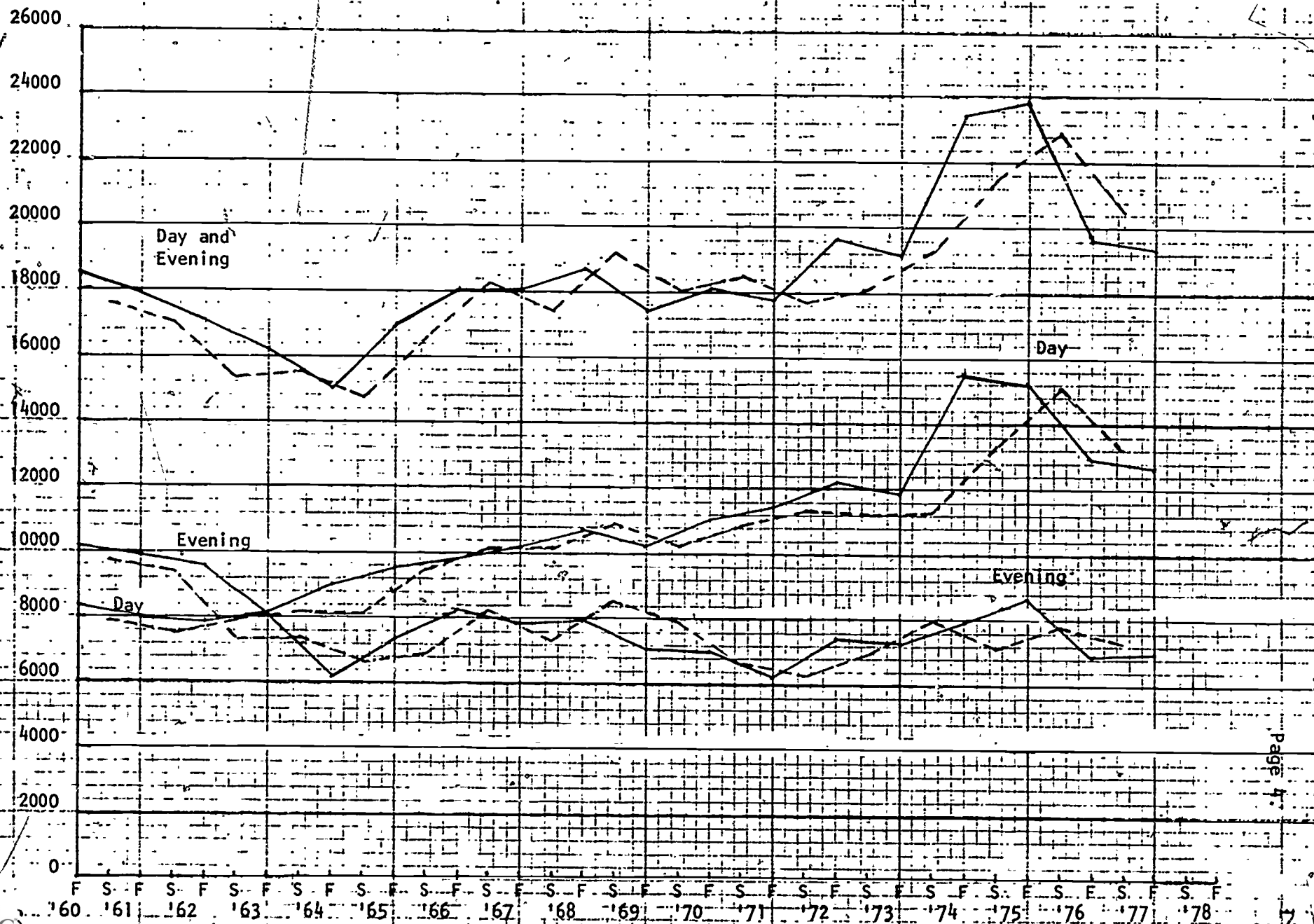
continued on next page

Number	Title	Years Covered	Semesters Included	Day or Evening
1	Total enrollment	1960-77	Fall, Spring	Day, Evening
2	Percent male	1960-77	Fall, Spring	Day, Evening
3	Percent full-time	1964-77	Fall	Day, Evening
4	Continuing, returning first time transfers & freshmen	1963-77	Fall	Day
5	First-time freshmen enrollments from 20 "feeder" high schools	1963-77	Total Academic Year	Day
	(a) Enrollments			
	(b) Enrollments as a percent of previous year high school graduating class			
	(c) Enrollments as a percent of total 1st time freshmen			
6	No. of graduates of L. A. Unified District high schools	1963-77		
	(a) All schools			
	(b) 20 "feeder" high schools			
7	Enrollments as a percent of previous year high school graduating class	1963-77	Academic Year	Day
	(a) Belmont			
	(b) Crenshaw			
	(c) Dorsey			
	(d) Fairfax			
	(e) Fremont			
	(f) Hamilton			
	(g) Hollywood			
	(h) Jefferson			
	(i) Los Angeles			
	(j) Manual Arts			
	(k) Marshall			
	(l) Washington			
	(m) Franklin			
	(n) Jordan			
	(o) Locke			

Following are some events which may partially explain some of the variance indicated in the findings:

1963-64 .....	matriculation requirement for evening students
1966-67 .....	enlargement of Los Angeles Junior College District
September, 1967 .....	opening of Los Angeles Southwest College
February, 1969 .....	opening of West Los Angeles College
March, 1969 .....	campus "strike"
July, 1969 .....	new Board of Trustees
September, 1969 .....	initiation of out-of-state tuition
February, 1970 .....	elimination of Los Angeles High Schools midyear graduation
September, 1970 .....	initiation of "adult" fee
1972-73 .....	change from local to District computer
Fall, 1974 .....	special class for L.A. Fire Department (approximately 2500 counted as day students)
Fall, 1975 .....	initiation of new district computer data base
Fall, 1976 .....	major effort to improve accuracy of "exclusion" reporting

**FIGURE 1** LACC Census Week Enrollments  
 Solid line - Fall semesters  
 Broken line - Spring semesters



**FIGURE 2 - LACC Census Week Enrollments:**  
Percent Male  
 Solid line - Fall semesters  
 Broken line - Spring semesters

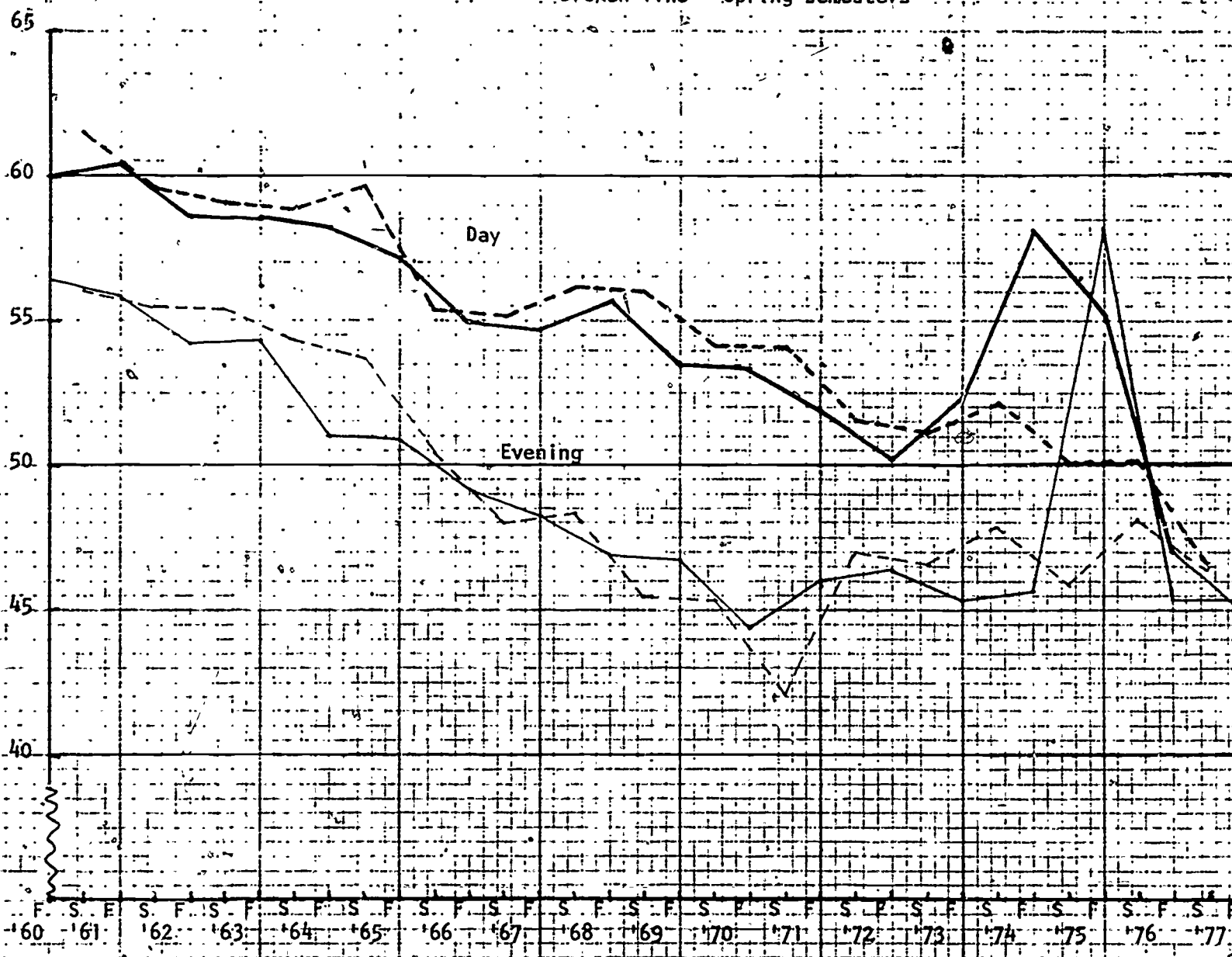
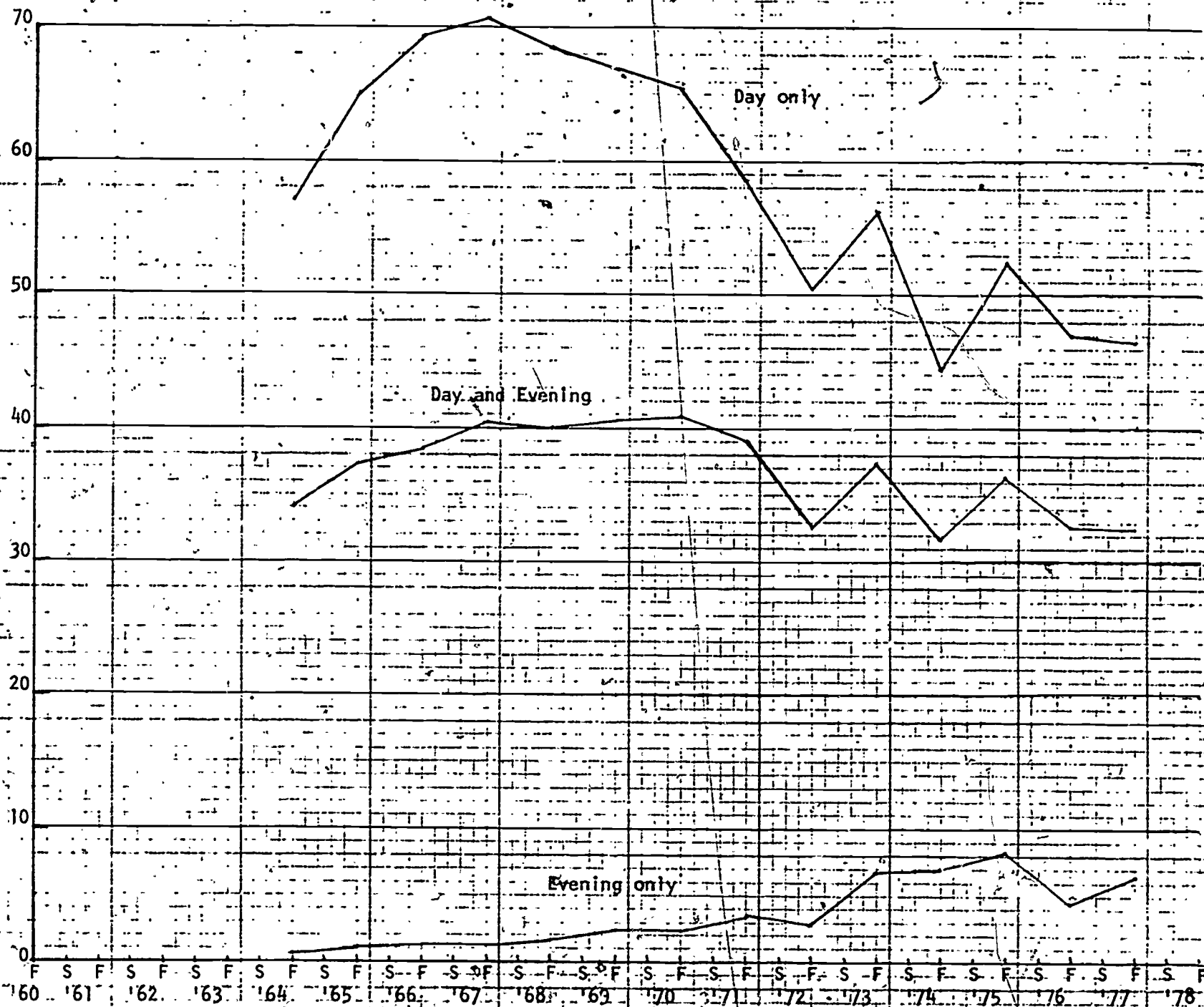


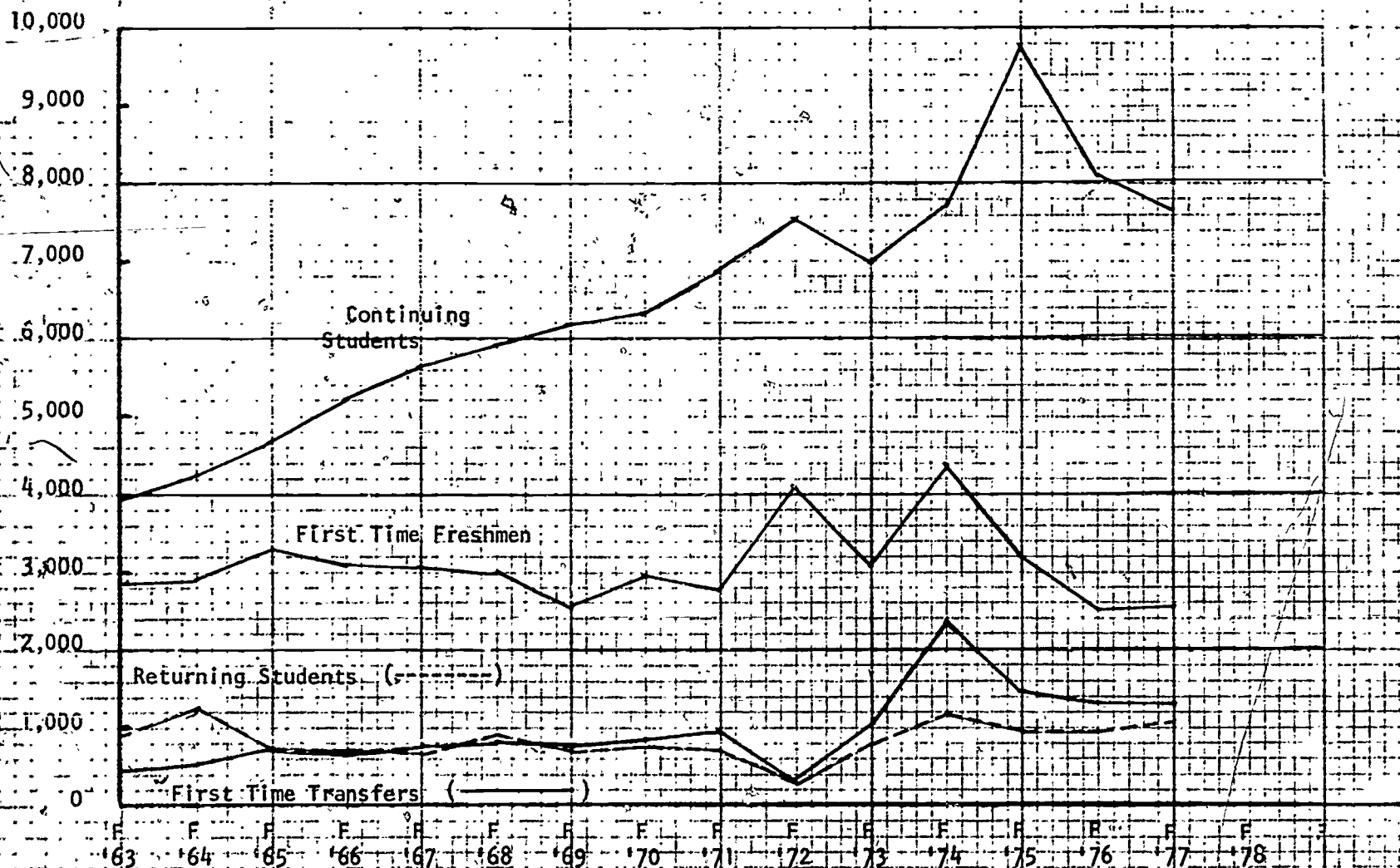


FIGURE 3 - LACC Census Week Enrollment:  
Percent Full-time, Fall Semesters Only

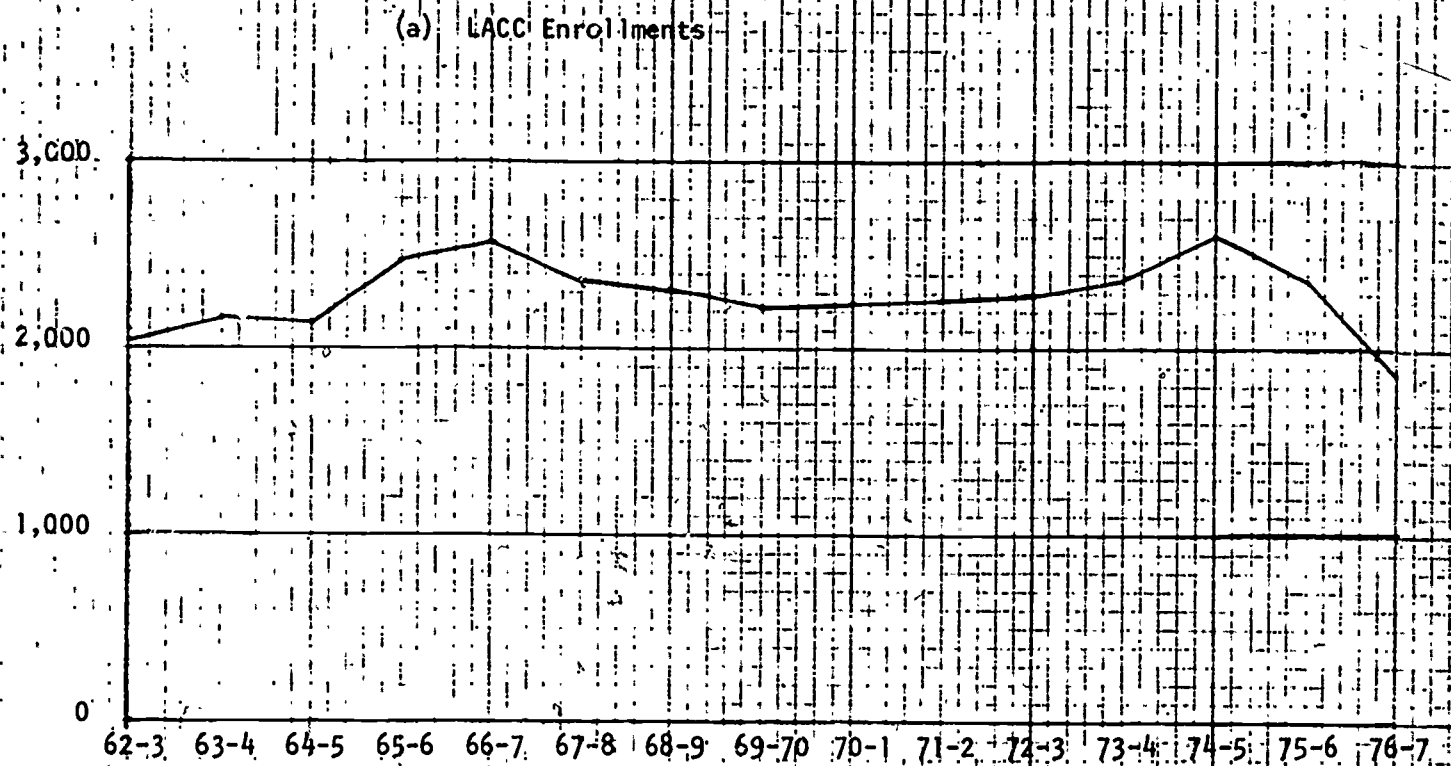




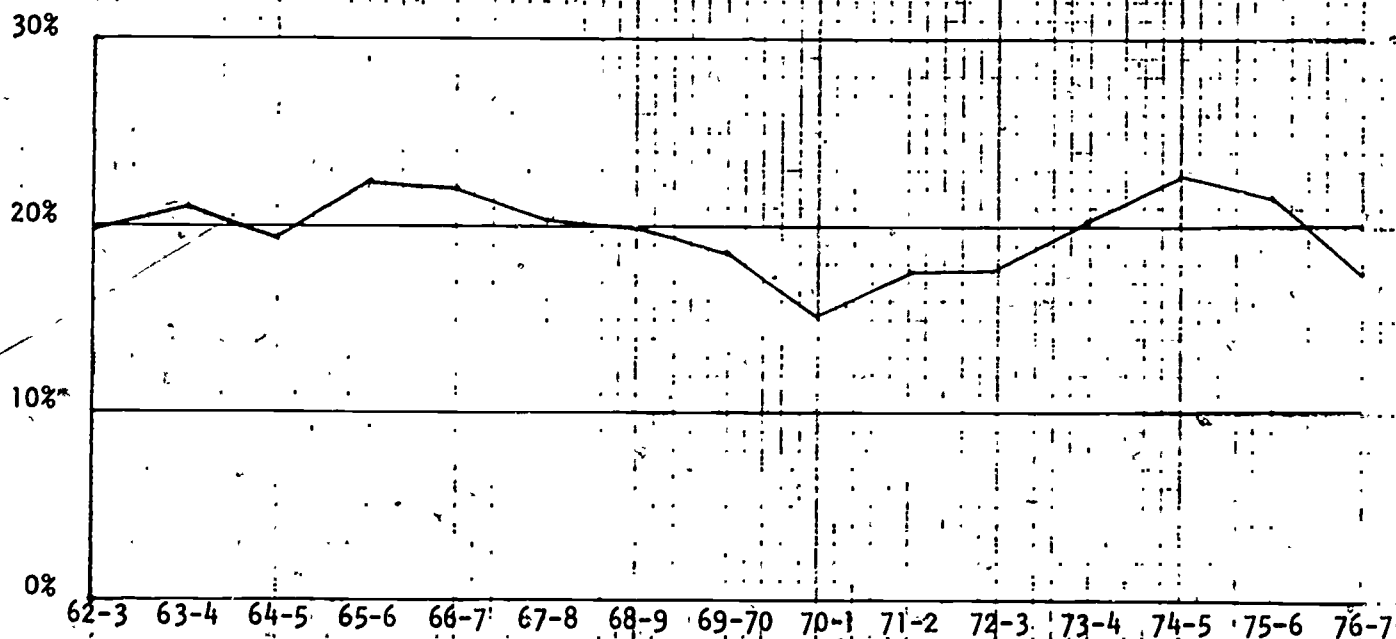
**FIGURE 4 - LACC Census Week Enrollments:  
Fall Day Students Only**



**FIGURE 5 - LACC First-Time Freshmen Day Enrollments  
from 20 "Feeder" High Schools**



(b) LACC Enrollments (from 20 "Feeder" High Schools) as a Percent of Previous Year High School Graduating Class



(c) LACC Enrollments (from 20 "Feeder" High Schools)  
as a Percent of Total First Time Day Enrollments

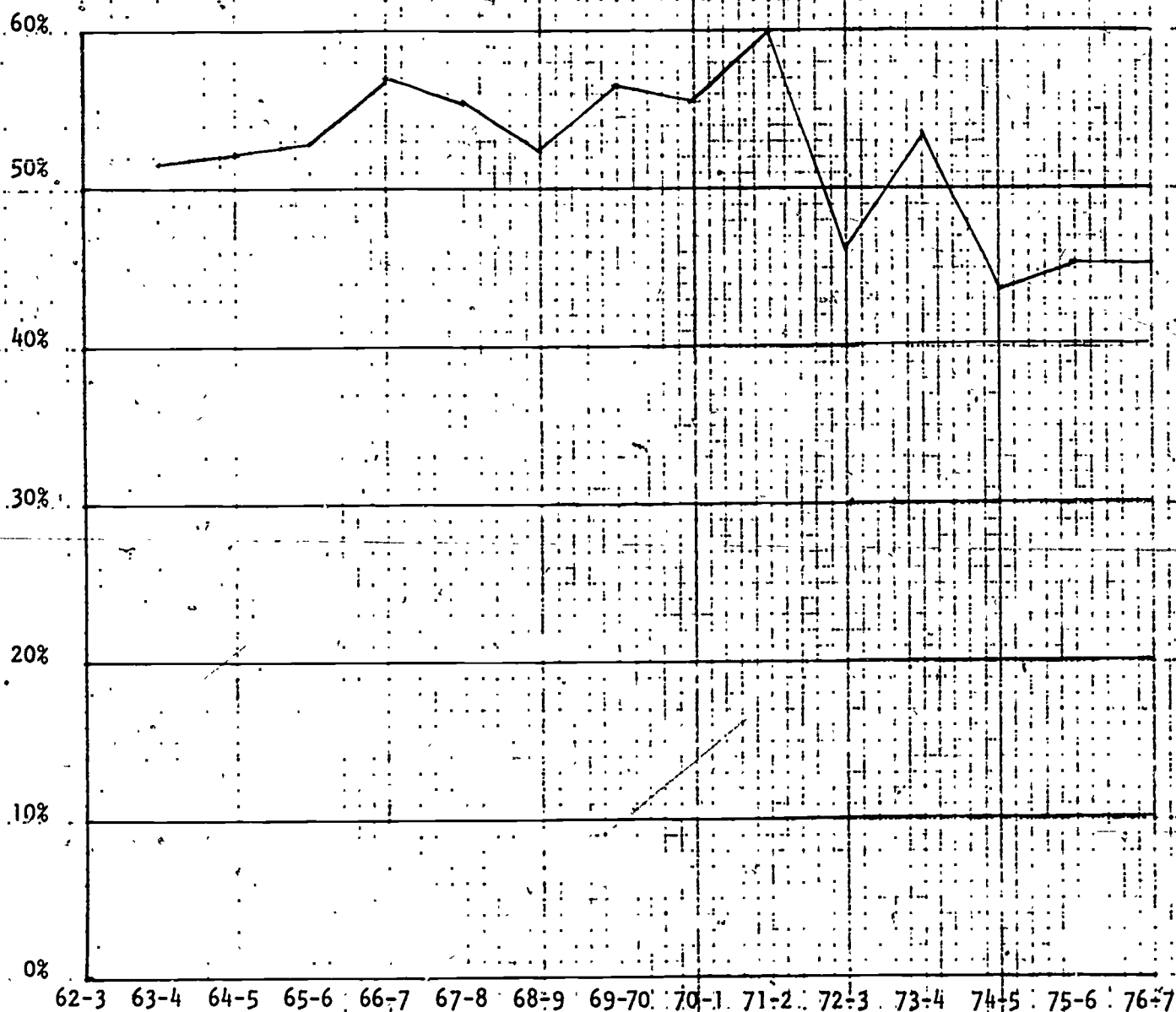
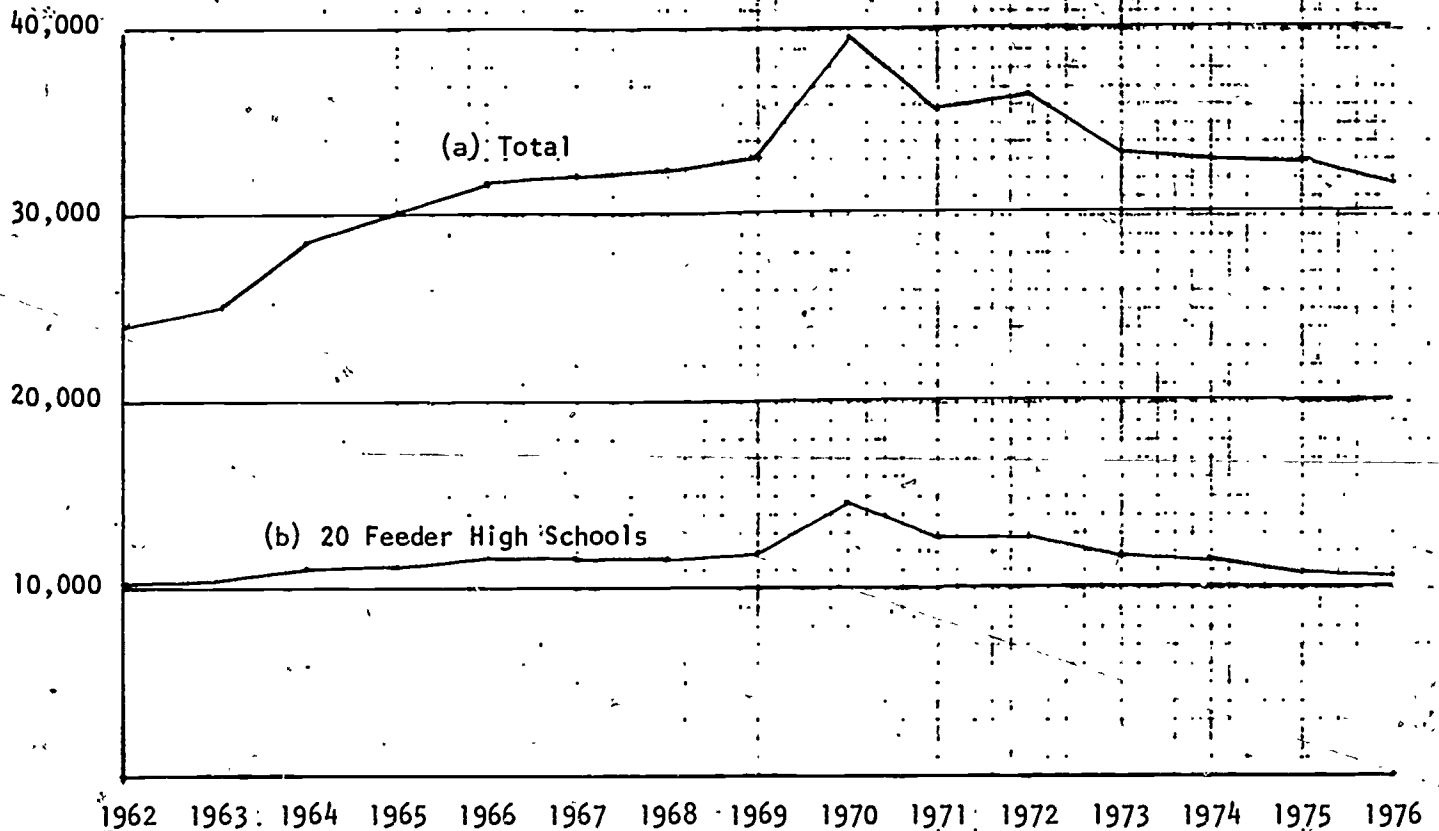


FIGURE 6- Numbers of Graduates at Los Angeles  
City High Schools



**FIGURE 7 - LACC Enrollments as a Percent of Previous Year High School Graduating Class: by High School (top 15 feeders)**

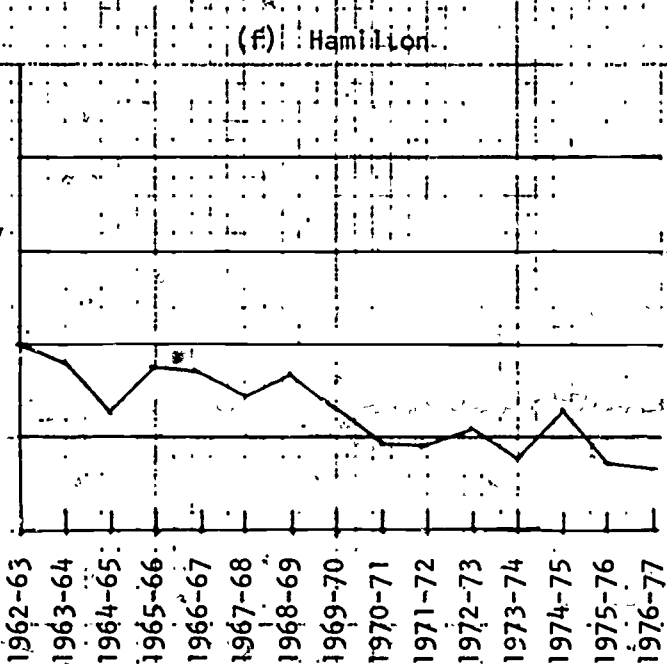
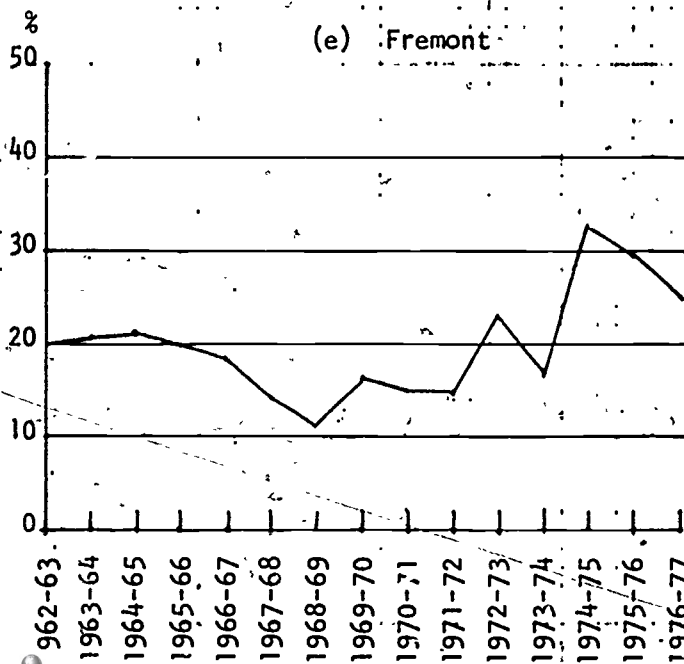
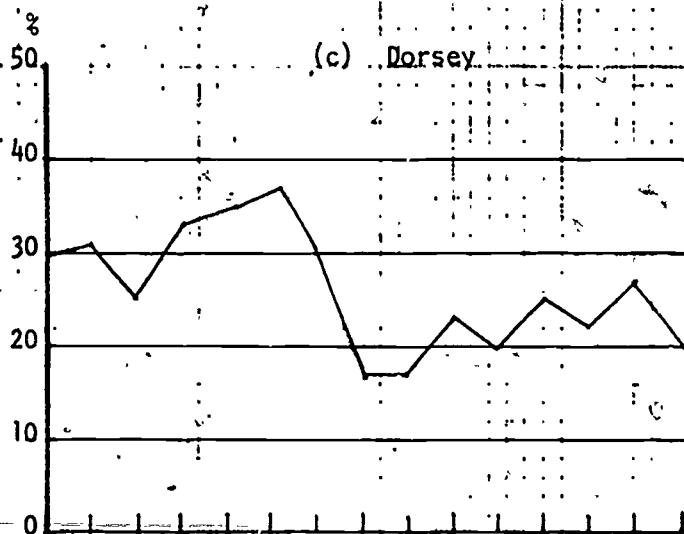
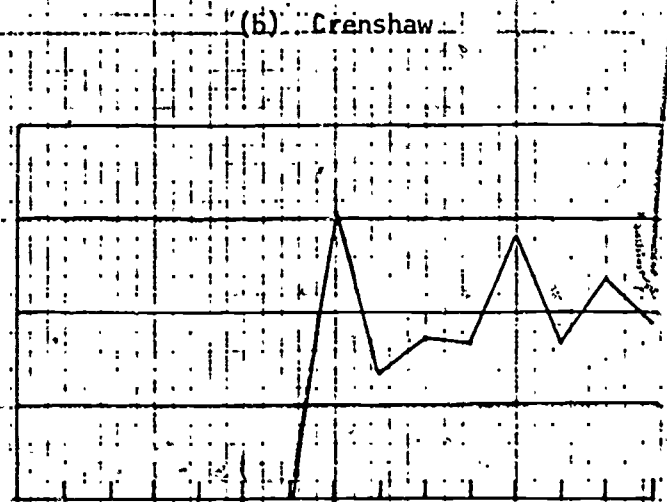
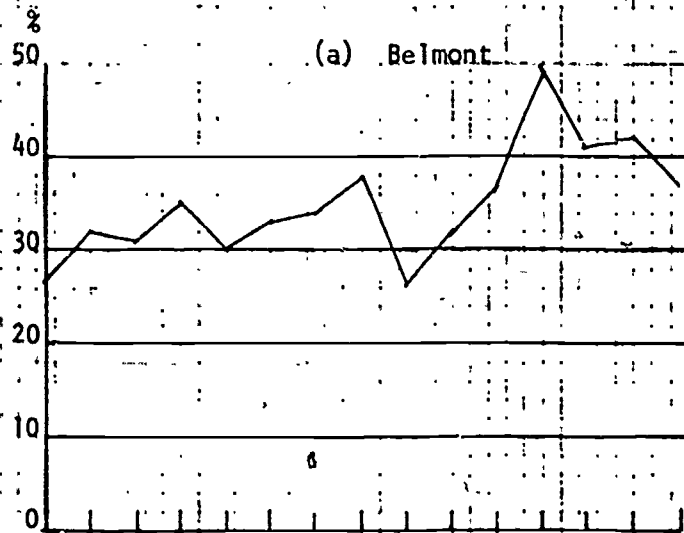
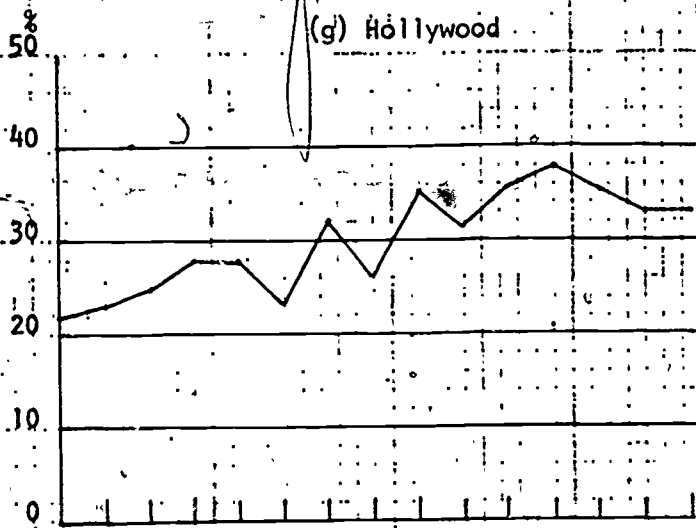


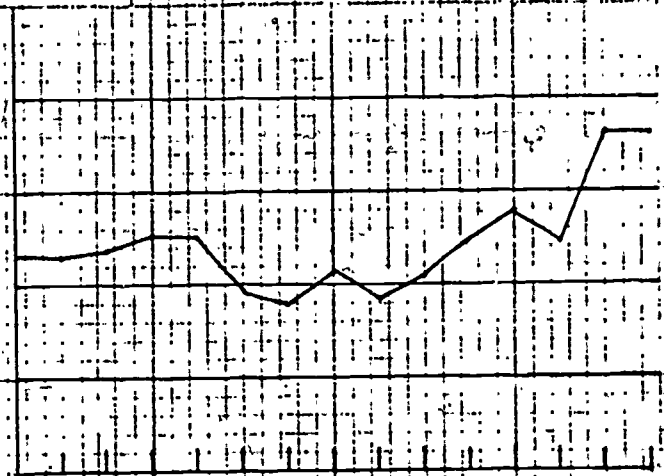


FIGURE 7 (continued)

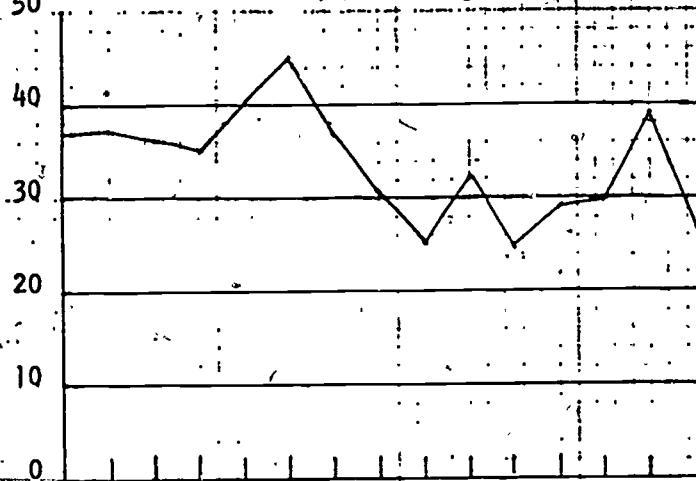
(g) Hollywood



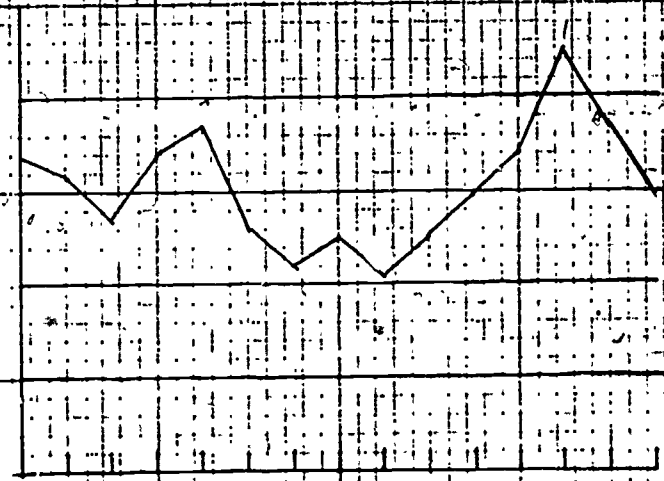
(h) Jefferson



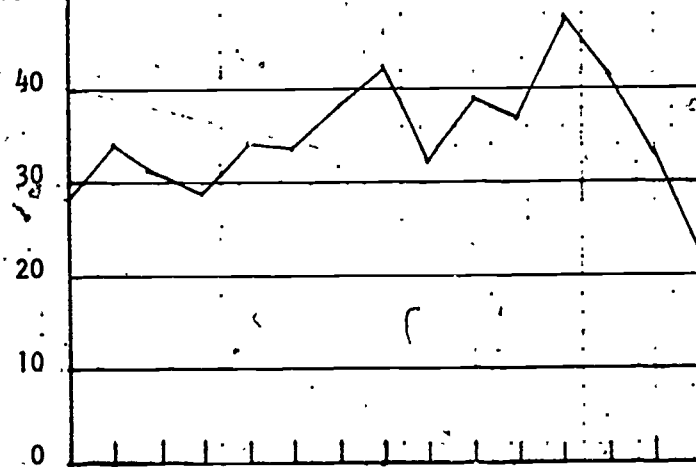
(i) Los Angeles



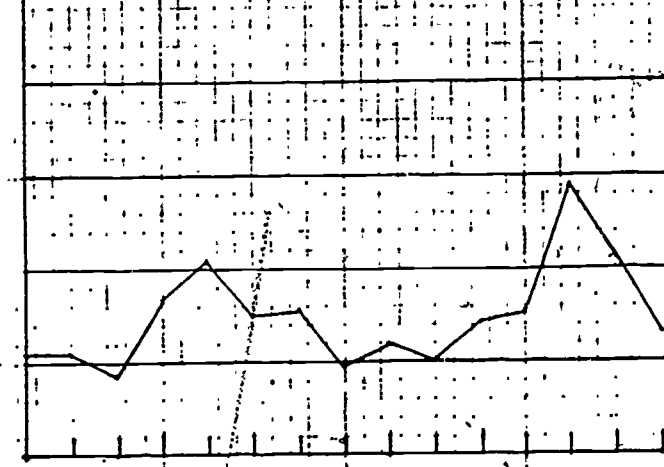
(j) Manual Arts



(k) Marshall



(l) Washington



1962-63

1963-64

1964-65

1965-66

1966-67

1967-68

1968-69

1969-70

1970-71

1971-72

1972-73

1973-74

1974-75

1975-76

1976-77

1962-63

1963-64

1964-65

1965-66

1966-67

1967-68

1968-69

1969-70

1970-71

1971-72

1972-73

1973-74

1974-75

1975-76

1976-77



FIGURE 7 (continued).

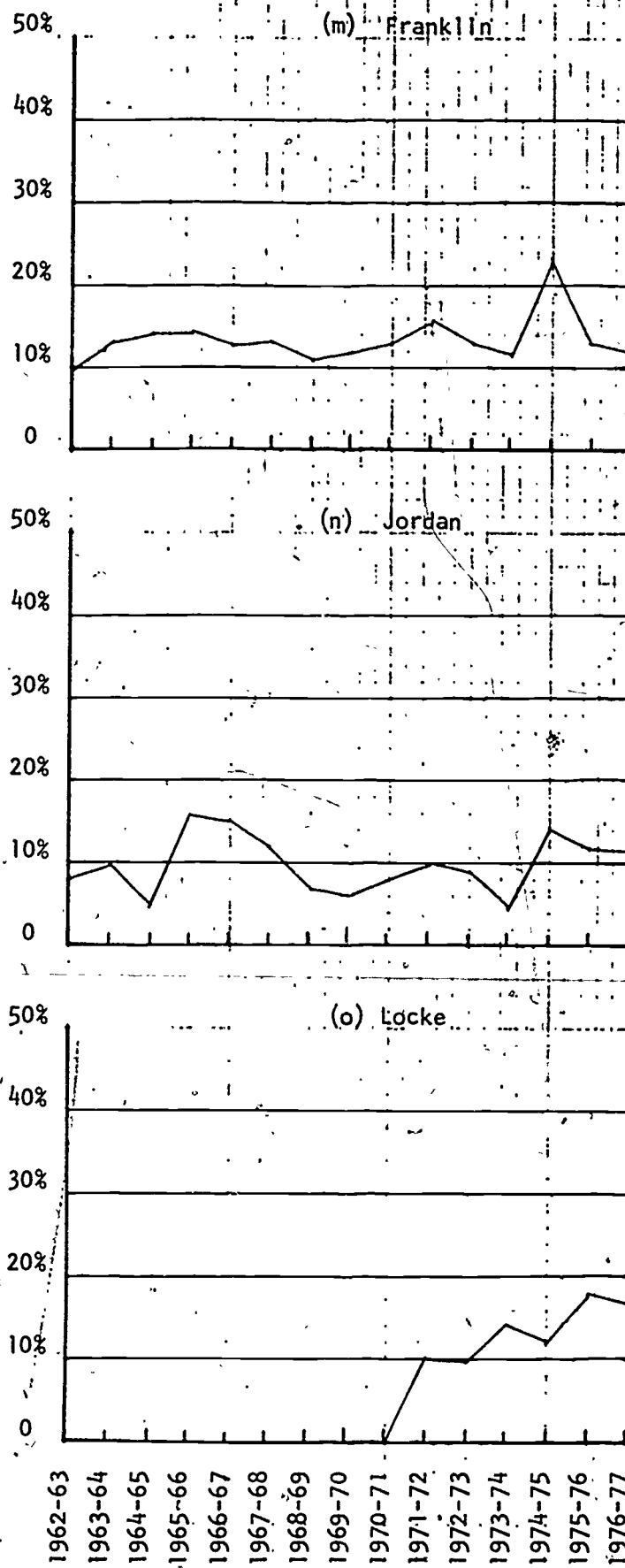


TABLE 1 - L.A.C.C. Census Week Enrollment Figures

## (a) Day Students

Semester	Total	Males	Full-time	Continuing Students	Returning Students	1st time Freshmen	1st time Transfers
Fall 1960	8,342	5,004					
Spring 1961	7,896	4,857					
Fall 1961	8,003	4,859					
Spring 1962	7,568	4,510					
Fall 1962	7,923	4,639					
Spring 1963	7,898	4,670					
Fall 1963	8,152	4,768		3,969	911	2,831	441
Spring 1964	8,167	4,810	5,326	5,721	666	1,369	411
Fall 1964	9,045	5,258	5,169	4,239	1,239	2,904	562
Spring 1965	8,127	4,852	5,268	6,111	376	1,191	388
Fall 1965	9,573	5,465	6,219	4,685	720	3,268	746
Spring 1966	9,485	5,259	6,590	6,462	850	1,393	521
Fall 1966	9,822	5,402	6,816	5,206	701	3,103	678
Spring 1967	10,091	5,573	6,897	7,478	445	1,429	540
Fall 1967	10,233	5,595	7,222	5,613	675	3,038	746
Spring 1968	10,161	5,705	6,930	7,797	399	1,260	527
Fall 1968	10,763	6,000	7,365	5,931	903	2,991	803
Spring 1969	10,877	6,095	7,436	8,172	458	1,421	663
Fall 1969	10,323	5,525	6,919	6,196	672	2,524	749
Spring 1970	10,272	5,570	N/A	7,674	450	1,413	578
Fall 1970	11,029	5,876	7,206	6,336	756	2,945	823
Spring 1971	10,852	5,872	7,014	8,359	463	1,125	737
Fall 1971	11,497	5,964	6,727	6,844	717	2,783	957
Spring 1972	11,337	5,836	6,757	9,387	62	1,084	804
Fall 1972	12,226	6,132	6,152	7,553	269	4,061	343
Spring 1973	11,255	5,753	6,512	8,996	614	915	730
Fall 1973	11,847	6,196	6,656	6,966	790	3,060	1,031
Spring 1974	11,315	5,896	6,237	8,295	726	1,403	891
Fall 1974	15,556	9,035	6,928	7,736	1,154	4,323	2,343
Spring 1975	13,304	6,669	6,911	9,814	814	1,629	1,047
Fall 1975	15,220	8,401	7,970	9,688	986	3,099	1,447
Spring 1976	15,145	7,607	8,523	10,640	1,031	2,118	1,356
Fall 1976	12,905	6,060	6,061	8,096	972	2,524	1,313
Spring 1977	13,213	6,160	6,352	9,440	1,040	1,587	1,146
Fall 1977	12,678	5,709	5,922	7,633	1,102	2,584	1,329

TABLE 1. (continued)

## (b) Evening Students

Semester	Total	Males	Full-time
Fall 1960	10,132	5,700	
Spring 1961	9,701	5,439	
Fall 1961	9,910	5,529	
Spring 1962	9,426	5,227	
Fall 1962	9,196	4,981	
Spring 1963	7,386	4,090	
Fall 1963	8,089	4,394	
Spring 1964	7,402	4,022	106
Fall 1964	6,261	3,190	42
Spring 1965	6,649	3,570	43
Fall 1965	7,349	3,742	71
Spring 1966	7,121	3,586	66
Fall 1966	8,201	4,027	93
Spring 1967	8,185	3,932	22
Fall 1967	7,904	3,812	88
Spring 1968	7,321	3,538	109
Fall 1968	7,982	3,738	129
Spring 1969	8,539	3,886	138
Fall 1969	7,140	3,332	174
Spring 1970	7,947	3,598	N/A
Fall 1970	7,027	3,123	168
Spring 1971	7,665	3,226	251
Fall 1971	6,305	2,902	217
Spring 1972	6,364	2,993	224
Fall 1972	7,396	3,423	218
Spring 1973	6,886	3,210	317
Fall 1973	7,338	3,326	496
Spring 1974	7,933	3,790	538
Fall 1974	7,958	3,636	560
Spring 1975	8,188	3,749	529
Fall 1975	8,684	5,051	724
Spring 1976	7,817	3,761	721
Fall 1976	6,822	3,094	375
Spring 1977	7,249	3,365	445
Fall 1977	6,857	3,137	454

TABLE 1 (continued)

(c) All Students

Semester	Total	Males	Full-time
Fall 1960	18,474	10,074	
Spring 1961	17,597	10,296	
Fall 1961	17,913	10,388	
Spring 1962	16,994	9,737	
Fall 1962	17,119	9,620	
Spring 1963	15,284	8,760	
Fall 1963	16,241	9,162	
Spring 1964	15,569	8,832	5,432
Fall 1964	15,306	8,448	5,211
Spring 1965	14,776	8,422	5,311
Fall 1965	16,922	9,207	6,290
Spring 1966	16,606	8,845	6,656
Fall 1966	18,023	9,429	6,909
Spring 1967	18,276	9,505	6,919
Fall 1967	18,137	9,407	7,310
Spring 1968	17,482	9,243	7,039
Fall 1968	18,745	9,738	7,494
Spring 1969	19,416	9,981	7,574
Fall 1969	17,463	8,857	7,093
Spring 1970	18,219	9,168	-----
Fall 1970	18,056	8,999	7,374
Spring 1971	18,517	9,098	7,265
Fall 1971	17,802	8,866	6,944
Spring 1972	17,701	8,829	6,981
Fall 1972	19,622	9,555	6,370
Spring 1973	18,141	8,963	6,829
Fall 1973	19,185	9,522	7,152
Spring 1974	19,248	9,686	6,775
Fall 1974	23,514	12,671	7,488
Spring 1975	21,492	10,418	7,440
Fall 1975	23,904	13,452	8,694
Spring 1976	22,962	11,368	9,244
Fall 1976	19,727	9,154	6,436
Spring 1977	20,462	9,525	6,797
Fall 1977	19,535	8,846	6,376

TABLE 2 - Numbers of Graduates of 20 L.A.C.C. Feeder High Schools

High School	1963	1964	1965	1966	1967	1968	1969	1970	1971	1972	1973	1974	1975	1976
1. Belmont	483	492	523	638	589	598	582	796	816	644	557	705	626	733
2. Crenshaw	0	0	0	0	0	0	352	818	750	851	710	643	652	638
3. Dorsey	693	723	729	885	796	778	691	764	586	769	753	667	654	580
4. Eagle Rock	338	379	352	361	366	349	405	414	391	399	378	334	383	334
5. Fairfax	763	885	835	889	791	790	835	899	868	921	760	860	702	598
6. Franklin	374	425	382	403	390	414	437	498	601	501	569	469	499	506
7. Fremont	628	650	709	793	914	950	658	845	611	508	469	528	500	536
8. Hamilton	994	1051	938	994	947	848	845	1103	800	737	642	636	571	557
9. Hollywood	605	696	667	582	634	552	623	485	553	524	573	520	456	487
10. Jefferson	425	410	414	494	448	423	495	571	425	372	258	346	334	221
11. Jordan	299	335	386	445	449	479	452	626	441	414	508	353	379	342
12. Lincoln	268	312	316	378	373	439	351	486	391	407	283	343	308	345
13. Locke	0	0	0	0	0	0	486	783	640	605	529	516	507	430
14. Los Angeles	714	733	747	711	749	818	790	949	761	847	916	823	705	654
15. Manual Arts	673	671	845	818	896	754	655	747	576	637	549	488	524	498
16. Marshall	525	667	593	532	611	575	589	630	626	663	581	601	616	602
17. Roosevelt	550	534	553	573	556	628	694	887	723	768	515	516	539	507
18. University	795	849	862	979	886	948	920	1131	923	966	890	951	940	804
19. Washington	911	915	855	884	925	900	684	913	907	757	763	625	562	653
20. Wilson	291	297	328	331	376	348	395	491	456	601	489	535	467	549
TOTAL 20 Schools (A)	10329	11024	11034	11690	11696	11591	11939	14786	12925	12891	11692	11461	10924	10574
TOTAL LA City Schools (B)	25020	28500	30094	31645	32022	32199	33223	39066	35843	36537	33163	33037	32954	31717
A ÷ B	41.3%	38.7%	36.7%	36.9%	36.5%	36.0%	35.9%	37.8%	36.1%	35.3%	35.3%	34.9%	33.2%	33.3%

**TABLE 3 - Numbers of First Time Freshmen Enrollments at LACC  
From 20 Feeder High Schools: Academic Year Totals**

High School	1963-1964	1964-1965	1965-1966	1966-1967	1967-1968	1968-1969	1969-1970	1970-1971	1971-1972	1972-1973	1973-1974	1974-1975	1975-1976	1976-1977
1. Belmont	155	153	182	192	194	204	220	211	263	239	271	290	264	270
2. Crenshaw	0	0	0	0	0	0	107	113	131	143	201	107	156	122
3. Dorsey	213	186	242	310	294	237	117	131	136	151	190	149	176	114
4. Eagle Rock	20	22	23	25	42	41	28	57	44	47	27	61	34	15
5. Fairfax	310	311	348	297	254	277	269	225	212	195	153	183	163	129
6. Franklin	48	60	54	50	50	46	53	65	95	64	67	110	64	61
7. Fremont	128	138	140	147	131	108	107	125	90	117	81	171	148	133
8. Hamilton	181	133	164	168	137	145	111	106	84	83	50	84	43	36
9. Hollywood	138	174	186	160	148	177	163	172	174	187	217	185	152	162
10. Jefferson	96	98	104	124	87	76	107	106	88	91	72	85	121	80
11. Jordan	29	17	61	67	54	32	28	52	44	37	25	50	45	40
12. Lincoln	21	41	39	37	27	44	107	103	36	32	34	43	37	18
13. Locke	0	0	0	0	0	0	0	0	65	60	75	63	90	72
14. Los Angeles	267	265	266	280	338	301	240	243	245	209	262	246	272	173
15. Manual Arts	213	181	288	300	236	168	166	155	145	188	187	220	193	147
16. Marshall	179	209	171	182	207	221	250	205	242	244	275	250	205	134
17. Roosevelt	44	51	36	31	29	42	49	27	48	44	42	53	45	38
18. University	22	16	14	18	22	39	21	31	14	23	11	26	17	12
19. Washington	99	78	143	183	122	140	66	110	93	109	118	183	120	87
20. Wilson	2	7	4	5	5	8	9	19	29	34	22	43	18	18*
Total 20 schools (A)	2165	2140	2465	2576	2377	2306	2218	2256	2278	2297	2380	2602	2363	1861 32284*
Total LACCD High schools (C)	2479	2600	3190	3141	3035	3010	2891	2911	2840	2979	2838	3476	2871	2400 40611*
Total 1st Time Day Freshmen (B)	4200	4095	4659	4532	4298	4412	3937	4070	3867	4976	4463	5952	5217	4111 62789*

\* Totals  
1963-1977



**TABLE 4 - Number of First Time Freshmen Enrollments at LACC from 20 Feeder High Schools: Percent of Previous Year High School Graduates**

High School	1963-1964	1964-1965	1965-1966	1966-1967	1967-1968	1968-1969	1969-1970	1970-1971	1971-1972	1972-1973	1973-1974	1974-1975	1975-1976	1976-1977
1. Belmont	32.1	31.1	34.8	30.1	32.9	34.1	37.8	26.5	32.2	37.1	48.6	41.1	42.2	36.8
2. Crenshaw	0	0	0	0	0	0	30.4	13.8	17.5	16.8	28.3	16.6	23.9	19.1
3. Dorsey	30.7	25.7	33.2	35.0	36.9	30.5	16.9	17.2	23.2	19.6	25.2	22.3	26.9	19.7
4. Eagle Rock	57.2	58.0	65.3	69.2	11.5	11.8	6.9	13.8	11.2	11.8	7.1	18.3	8.9	4.5
5. Fairfax	40.6	35.1	41.7	33.4	32.1	35.1	32.2	25.0	24.4	21.2	20.1	21.3	23.2	21.6
6. Franklin	12.8	14.1	14.1	12.4	12.8	11.1	12.1	13.0	15.8	12.8	11.8	23.5	12.8	12.1
7. Fremont	20.4	21.2	19.8	18.5	14.3	11.4	16.3	14.8	14.7	23.0	17.3	32.4	29.6	24.8
8. Hamilton	18.2	12.6	17.5	16.9	14.5	17.1	13.1	9.6	9.5	11.3	7.8	13.2	7.5	6.5
9. Hollywood	22.8	25.0	27.9	27.5	23.3	32.1	26.2	35.5	31.5	35.7	37.9	35.6	33.3	33.3
10. Jefferson	22.6	23.9	25.1	25.1	19.4	18.0	21.6	18.6	20.7	24.5	27.9	24.6	36.2	36.2
11. Jordan	9.7	5.1	15.8	15.1	12.0	6.7	6.2	8.3	10.0	8.9	4.9	14.2	11.9	11.7
12. Lincoln	7.8	13.1	12.3	9.8	7.2	10.0	30.5	23.6	9.2	7.9	12.0	12.5	12.0	5.2
13. Locke	0	0	0	0	0	0	0	0	10.2	9.9	14.2	12.2	17.8	16.7
14. Los Angeles	37.4	36.2	35.6	39.4	45.1	36.8	30.4	25.6	32.2	24.7	28.6	29.9	38.6	26.5
15. Manual Arts	31.6	27.0	34.1	36.7	26.3	22.3	25.3	20.8	25.2	29.5	34.1	45.1	36.8	29.5
16. Marshall	34.1	31.3	28.8	34.2	33.9	38.4	42.4	32.5	38.7	36.8	47.3	41.6	33.3	22.3
17. Roosevelt	8.0	9.6	6.5	5.4	5.2	6.7	7.1	3.0	6.6	5.7	8.2	10.3	8.3	7.5
18. University	2.8	1.9	1.6	1.8	2.5	4.1	2.3	2.7	1.5	2.4	1.2	2.7	1.8	1.5
19. Washington	10.9	8.5	16.7	20.7	13.2	15.6	9.6	12.0	10.2	14.4	15.5	29.3	21.4	13.3
20. Wilson	0.7	2.4	1.2	1.5	1.3	2.3	2.3	3.9	6.4	5.7	4.5	8.0	3.9	3.3
Total 20 schools	21.0	19.4	22.3	22.0	20.3	19.9	18.6	15.3	17.6	17.8	20.4	22.7	21.6	17.6
A/C	87.3	82.3	77.2	82.0	78.3	76.6	76.7	77.5	80.2	77.1	83.9	74.9	82.3	77.5*
A/B	51.6	52.3	52.9	56.8	55.3	56.3	56.3	55.4	58.9	46.2	53.3	43.7	45.3	45.3*
C/B	59.2	63.5	68.5	69.3	70.6	68.2	73.4	71.5	73.4	59.9	63.6	58.4	55.0	58.4*

\*1963-77 Totals

A/C (79.4)

A/B (51.4)

C/B (64.8)

- A Total enrollment from 20 LACCD feeder high schools  
 B Total enrollment of 1st time day freshmen at LACC  
 C Total enrollment from all LACCD high schools

**TABLE 5 - Ranking of 20 Los Angeles High Schools**  
 (Major L.A.C.C. Feeders) on:  
 a - No. of graduates enrolled at LACC  
 b - % of graduates enrolled at LACC

High School	1963-1964		1964-1965		1965-1966		1966-1967		1967-1968		1968-1969		1969-1970		1970-1971		1971-1972		1972-1973		1973-1974		1974-1975		1975-1976		1976-1977	
	a	b	a	b	a	b	a	b	a	b	a	b	a	b	a	b	a	b	a	b	a	b	a	b	a	b	a	b
1. Belmont	7	4	7	4	6	3	5	6	6	4	5	4	4	2	3	3	1	2	2	1	2	1	1	3	2	1	1	1
2. Crenshaw	19	-	19	-	19	-	19	-	19	-	19	-	9	5	9	11	8	9	8	10	5	6	11	13	7	9	8	10
3. Dorsey	3	6	4	6	4	5	1	3	2	2	3	6	7	10	17	9	7	7	7	9	6	8	9	10	5	8	9	9
4. Eagle Rock	17	16	15	13	16	15	16	15	14	14	15	11	16	16	15	12	16	12	15	13	17	17	15	12	18	16	19	18
5. Fairfax	1	1	1	2	1	1	3	5	3	5	2	3	1	3	2	5	4	6	4	8	8	9	6	11	6	10	7	8
6. Franklin	12	11	12	10	13	13	13	13	13	12	12	13	14	13	14	13	9	10	13	12	13	14	10	9	13	13	13	13
7. Fremont	9	9	8	9	10	9	10	10	9	10	10	12	10	11	9	10	11	11	9	7	10	10	8	5	9	7	6	6
8. Hamilton	5	10	9	12	8	10	8	11	8	9	8	9	8	12	11	15	13	16	12	14	14	16	13	15	16	18	16	16
9. Hollywood	8	7	6	7	5	7	9	7	7	7	6	5	6	7	5	1	5	4	6	3	4	3	5	4	8	5	3	3
10. Jefferson	11	8	10	8	11	8	11	8	11	8	11	8	11	9	12	8	12	8	11	6	12	7	12	8	10	4	11	2
11. Jordan	14	13	16	16	12	12	12	12	12	13	17	16	17	17	16	16	17	15	17	16	18	18	17	14	14	15	14	14
12. Lincoln	16	15	14	11	14	14	14	14	16	15	13	14	12	4	13	6	18	17	19	17	16	13	18	16	17	14	17	17
13. Locke	20	-	20	-	20	-	20	-	20	-	20	-	20	20	20	20	14	14	14	15	11	12	14	17	12	12	12	11
14. Los Angeles	2	2	2	1	3	2	4	1	1	1	1	2	3	4	1	4	2	3	3	5	3	5	3	6	1	2	2	5
15. Manual Arts	4	5	5	5	2	4	2	2	4	6	7	7	5	7	6	7	6	5	5	4	7	4	4	1	4	3	4	4
16. Marshall	6	3	3	3	7	6	7	4	5	3	4	1	2	2	4	2	3	1	1	2	1	2	2	2	3	6	5	7
17. Roosevelt	13	14	13	13	15	16	15	16	15	16	14	15	15	18	18	18	15	18	16	18	15	15	16	18	15	17	15	15
18. University	15	17	17	18	17	17	17	17	17	17	16	17	18	19	17	19	20	20	20	20	20	20	20	20	20	20	20	20
19. Washington	10	14	11	14	9	11	6	9	10	11	9	10	13	14	10	14	13	19	10	11	9	11	7	7	11	11	10	12
20. Wilson	18	18	18	17	18	18	18	18	18	18	18	18	19	17	19	17	19	19	18	19	19	19	19	19	19	19	18	19

## SUMMARY AND CONCLUSIONS

This study presents some statistics relating to L.A.C.C. enrollments over the past eighteen years. During that period, different methods of collecting and storing data have produced some inconsistencies. For example, in Fall 1975 when the new computer base was initiated, students who did not indicate sex were recorded as males; when new L. A. Unified District high schools were opened, students from those schools were assigned incorrectly to other schools for two to three years. Nevertheless, some trends can be inferred.

Following are some observations:

- (1) With the exception of the 1969-70 year (following the year of maximum campus unrest), day enrollment rose steadily, averaging about 4% increase per year, from 1962 to 1974. Since 1974, day enrollment has dropped but is still above the 1973 level.
- (2) Although evening enrollment has fluctuated more than day enrollment, trend lines indicate no clear upward or downward longitudinal trend over the past dozen years.
- (3) With the exception of 1974 and 1975 (faulty data collection is suspected), percent male day enrollment has dropped steadily since 1960. In 1960, 60% of the day students were male; in 1977, only about 45% were male. Evening percent male consistently declined from about 57% in 1960 to about 45% in 1970. Since 1970, evening percent male has remained at about 45%. Clearly, the past fifteen years has seen an increase in the number of female students.
- (4) Percent of day students who are full-time (12 units or more) has dropped from a high of 70% in 1967 to below 50% in 1977. During this period the percent of students who are continuing has risen sharply. The trend seems to indicate that students are carrying lighter loads and staying in college longer.

SUMMARY AND CONCLUSIONS (continued)

- (5) Over the past fifteen years, L.A.C.C. has consistently attracted about 20% of the graduates of twenty local "feeder high schools". When compared to all first-time enrollments, however, these students accounted for about 55% of the total in 1967 as compared to 45% in 1977.
- (6) In comparing numbers who attended L.A.C.C. from the "feeder" high schools expressed as a percent of the previous year's high school graduating class, figures for 1976-77 range from 1.5% to 36.8%. The five top schools in 1976-77 were (in order) Belmont, Jefferson, Hollywood, Manual Arts, Los Angeles. Five years ago four of these schools were in the top five (Jefferson replacing Marshall); ten years ago, only two (Manual Arts and Los Angeles) were in the top five, with the remaining three replacing Marshall, Dorsey and Fairfax.
- (7) In terms of numbers enrolling from the "feeder" high schools, 18 of the twenty showed decreases in 1976-77 (averaging 21%) from 1975-76. Seven of the schools (Dorsey, Eagle Rock, Fairfax, Hamilton, Lincoln, Los Angeles, Marshall) showed 1976-77 first-time enrollment at L.A.C.C. to be the lowest in the past fifteen years.

\*\*\*\*\*

UNIVERSITY OF CALIF.  
LOS ANGELES

JAN 20 1978

CLEARINGHOUSE FOR  
JUNIOR COLLEGES