

DOCUMENT RESUME

ED 126 330

CE 007 464

AUTHOR Fulmer, John L.
TITLE TERRA FIRMA, Threshold of Educational Reform
Restructuring Agriculture for Inner City Related
Motivation and Accomplishments. Final Report.
INSTITUTION Anniston City Schools, Ala.
SPONS AGENCY Alabama State Dept. of Education, Montgomery. Div. of
Vocational Education and Community Colleges.
REPORT NO VT-102-981; VT-102-982
PUB DATE 75
NOTE 46p.; Pages 15 and 16 containing xeroxed publicity
materials were not reproducible and were removed,
they are not included in the pagination; Appended
newspaper clippings and letters may not reproduce
EDRS PRICE MF-\$0.83 HC-\$2.06 Plus Postage.
DESCRIPTORS Cooperative Programs; Demonstration Projects;
*Developmental Programs; Educational Innovation;
*Inner City; *Program Descriptions; Publicize;
Secondary Education; *Vocational Agriculture; Work
Experience Programs

ABSTRACT

The report describes the first year (1974-75) activities and accomplishments of a project to provide a cooperative-based vocational agriculture program for secondary students in Anniston, Alabama. The overall objectives were to provide instruction in livestock production and horticulture, leadership training, participatory experience on a real farm, and tours to provide orientation relating to agricultural experiences. The project was subdivided into six operations that functioned concurrently: curriculum development, student recruitment, resource development, public relations, solicitation of funds, and evaluation. The report includes a breakdown and description of the procedures for each of these areas of operation. In evaluation, a brief statement is made to indicate the accomplishment of the objectives. The problems encountered are mentioned and suggestions for continued development are offered. Over one-half of the document consists of appended publicity materials and project correspondence. An outline of the swine program is also appended. Included in the document is a three-month report outlining plans and preparation for the second year of the project. (NJ)

* Documents acquired by ERIC include many informal unpublished *
* materials not available from other sources. ERIC makes every effort *
* to obtain the best copy available. Nevertheless, items of marginal *
* reproducibility are often encountered and this affects the quality *
* of the microfiche and hardcopy reproductions ERIC makes available *
* via the ERIC Document Reproduction Service (EDRS). EDRS is not *
* responsible for the quality of the original document. Reproductions *
* supplied by EDRS are the best that can be made from the original. *

THIS DOCUMENT HAS BEEN REPRO-
DUCED EXACTLY AS RECEIVED FROM
THE PERSON OR ORGANIZATION ORIGIN-
ATING IT. POINTS OF VIEW OR OPINIONS
STATED DO NOT NECESSARILY REPRESENT
OFFICIAL NATIONAL INSTITUTE OF
EDUCATION POSITION OR POLICY

FINAL REPORT

Project Number RCU-D-74-S006

TERRA FIRMA

THRESHOLD OF EDUCATIONAL REFORM RESTRUCTURING AGRICULTURE
FOR INNER CITY RELATED MOTIVATION AND ACCOMPLISHMENTS

Exemplary Project in Vocational Education
Conducted Under
Part D of Public Law 90-576
(State Part)

John L. Fulmer
Anniston City Schools
P. O. Box 1500
Anniston, Alabama 36201

June 24, 1975

The project reported herein was conducted pursuant to a grant with the Alabama State Department of Education, Division of Vocational Education and Community Colleges. Contractors undertaking such projects under State Government sponsorship are encouraged to express freely their professional judgement in the conduct of the project. Points of view or opinions stated do not, therefore, necessarily represent official State Department of Education position or policy.

ED1263330

CE007484

TABLE OF CONTENTS

ABSTRACT.....	
I. INTRODUCTION.....	
II. OBJECTIVES.....	
III. PROJECT PERSONNEL.....	
IV. PROCEDURES.....	
V. ACCOMPLISHMENTS.....	
VI. PROBLEMS ENCOUNTERED.....	

ABSTRACT

After extensive research in determining the current demand for on-farm and off-farm skills, the Anniston City Board of Education initiated a program to provide instruction in these disciplines while broadening the scope of educational experiences for participating students.

Even though significant progress has been made over the years in curriculum development and instructional enhancements, educators are still faced with the challenge of enlivening educational programs to decrease drop-out rates and motivate students in general.

The original objectives and planned operation of any innovative endeavor tends to expand and modify as practicality overcomes the theoretical concepts of the project's initial design. With this in mind, the Anniston City Schools structured the TERRA FIRMA organization and operation with flexibility through constantly monitoring, evaluating and modifying the project's implementation.

The most significant area of redirection of emphasis was in the area of public relations. After the program received state and nationwide publicity, interested citizens became involved and offered support and contributions which helped to further insure the project's success. Through these contributions the board of education was able to completely renovate the existing facilities to include classrooms and offices. The

barn was completely renovated and a fully automated greenhouse was constructed.

Plans are currently in progress to continue to emphasize the public relations area as well as to continue in expanding each aspect of the project's activities.

I. INTRODUCTION

Anniston, Alabama, a city of approximately 32,000 population is located in the Northeastern section of the State. Historically the city has been one of the leading soil pipe producers in the world. Although new technology has removed to a great extent the need for soil pipe, Anniston still retains the characteristics of a small industrial city.

The racial composition of public schools has changed since 1965 from a 30 percent minority to approximately 55 percent minority. The Anniston school district is composed of one senior high school, one junior high school and seven elementary schools. The pupil population, grades one through twelve is 5,587, 2,520 of which are white with 3,067 black. 1,372 of the total pupil population come from low income families. The senior high school is a comprehensive high school with a strong department of Vocational and Industrial Education.

The students served by the program described herein represented a near cross section of the total student population. Of the forty students participating, 70 percent were white and 30 percent black. 57 percent of the students were male and 43 percent were female.

The Anniston City Board of Education committed \$62,751.34 to implement the project and the State of Alabama provided \$38,798.59 toward funding.

II. OBJECTIVES

The Anniston City Board of Education is using all of its available resources (which includes a 167 acre farm within the city limits of Anniston) to implement a unique agricultural program that provides training in virtually all areas of farming for the students and citizens of the Anniston and surrounding community. The overall objectives of this program are:

For Grades 10, 11, and 12.

1. Provide morning and afternoon instruction in the areas of Livestock Production and Horticulture according to curriculum outlined by the State Department of Education. It is anticipated that 50 to 80 students will participate in this program the first year.
2. Students participating in the program will represent a cross section of the total student population.
3. Approximately one fourth of participating students will be provided teaching related experiences by serving as student teacher aides in helping instruct the disadvantaged students on an individual basis.
4. Approximately one fourth of participating students will be assisted by the student teacher aides.
5. To use individually prescribed learning plans containing specific skills and objectives, for each student involved.

6. Provide leadership training for each student enrolled so that they may participate in leadership citizenship, and cooperative activities.
7. Provide opportunities for students to participate in County, State, and National incentive programs.
8. Place each graduating student in an occupation related to his particular training or a continuing educational program.

For Grades 7 - 9

1. Provide 25 hours orientation and participating experience. Students who are enrolled in the courses will help conduct these orientation programs.

For Grades 1 - 6

1. Accomodate approximately one hundred students per week with conducted tours to provide orientation relating to agriculture experiences. These tours will begin second semester.

III. PROJECT PERSONNEL

During school year 1974-75, there were a total of forty students enrolled in the program. Twenty were enrolled in Horticulture and twenty in Livestock Production. All students enrolled were bussed from Cobb Junior High School to the farm for two hour blocks of instruction. All the students participating were enrolled in the 9th grade.

Personnel involved in the program included two full time instructors and one secretary. The food service director spent 50% of his time in coordinating all of the program's activities.

IV. PROCEDURES

The TERRA FIRMA Project was subdivided into six operations that functioned concurrently. The following is a breakdown and description of these activities:

1. Curriculum Development

The Curriculum Development procedure was a continuing, flexible effort which closely interfaced with the resource development process.

It was necessary the first year to maintain flexibility in this development, primarily because of the unpredictable time schedule of physical resource development. For example: in order to incorporate the swine program into teaching livestock production in a real life situation, the curriculum was dependent upon soliciting and receiving contributions, determining, locating and purchasing a desired breed, construction farrowing pens and transporting the pigs to the farm.

The program was actually enhanced by this approach, because the students were actively involved in each phase of this activity.

2. Student Recruiting

The original concept of the program was to cater to high school students, however, student interest was more prevalent among ninth graders. Therefore, the original concept was modified and courses established for ninth grade participation.

After 40 students were selected, their class schedules were modified and bussing schedules were established for transporting 20 students in the morning and 20 in the afternoon for two hour blocks of instruction.

3. Resource Development

Since the farm had been practically non-productive for four years, it was necessary to renovate the existing facilities in addition to conducting a new construction program.

Plans were made to locate the new facilities in a locale that provided for efficient human factoring while conforming to the long range building program.

Students were actively involved in the planning process as well as the actual physical labor.

Feasibility studies were conducted to determine the most desirable livestock breeds to incorporate into the instruction program.

4. Public Relations

As stated previously the Public Relations area was one of the most successful aspects of the program.

The original plan was to make periodic press releases to keep the local public aware of the efforts and solicit support, however, after commentator Paul Harvey described the program's objectives on national television, response and support has been overwhelming.

Appendix A is a sampling of articles and correspondence relating to the farm program.

5. Solicitation of Funds

A continuous effort was put forth to solicit funds from benevolent foundations, as well as government agencies and philanthropists.

6. Evaluation

The evaluation process was included to provide an objective means to continually improve and enhance the programs activities.

Weekly meetings were held between the farm employees and school administrators to determine and provide a solution toward the problem areas and evaluate progress as it related to the original objectives.

Students were interviewed periodically and offered suggestions and recommendations.

V. ACCOMPLISHMENTS

The first year's operation of TERRA FIRMA has been evaluated as successful.

The following is a breakdown of accomplishments by objectives: For a detail description of each objective, refer to Section II of this report.

OBJECTIVE

ACCOMPLISHMENT

- | | |
|----|--|
| 1. | Modified to 40 ninth grade students.
Objective accomplished |
| 2. | accomplished |
| 3. | accomplished |
| 4. | accomplished |
| 5. | accomplished |
| 6. | accomplished - An FFA Chapter was established and students participated in the various FFA Contests. |
| 7. | accomplished |
| 8. | Since courses were provided for ninth grade participation only, this objective no longer applied. |

Grades 7-9

1.

An orientation program was conducted but limited to: 2 hours because of conflicting schedules.

Grades 1-6

2.

This objective was not accomplished primarily because of limited time available.

One of the major accomplishments was in the success of the FFA Chapter. The following is a breakdown of the awards presented to the FFA Chapter:

1 - County

1st Place Public Speaking
2nd Place Dairy Judging
3rd Place Livestock Judging

2 - Area

Public Speaking Winner

3 - District

4th Place Public Speaking

4 - State

-Top 4 in Chapter Awards Program
-Superior Rating, Chapter
-Chapter Safety Award
-Gold Emblem Award
-BOAC Gold Emblem Award

~~Another~~
~~One of the~~ major accomplishments was the construction of a fully automated 100' x 30' Greenhouse. Also the Livestock program was very successful. Appendix B is a brief plan of the Swine Program operation.

VI. PROBLEMS ENCOUNTERED

Throughout the year there were many problems encountered but considering all the activities involved, the overall operation was relatively smooth.

The major problems encountered were in the area of solicitation of funds and conducting tours from younger students.

There were many rejections from foundations and government agencies however, the contributions that were received were ample enough to maintain a progressive growth rate.

The conducted tours are intended to be emphasized in the next year's activities after the initial time consuming tasks of establishing resources has been completed.

VII. THE FUTURE

The Anniston City Board of Education intends to proceed in the implementation of TERRA FIRMA with hopes of establishing a pilot type situation that other School Systems can follow.

Plans are currently in progress to expand the curriculum to provide courses for a broad range of learning exceptionalities, to include the mentally and physically handicapped.

Hopefully in the near future facilities will be provided for canning, bee keeping, catfish breeding, and a wild life refuge. Additional classrooms for the increasing enrollment are also in the plans.

If the enthusiasm and interest that has prevailed since TERRA FIRMA's inception continues, the next several years should be marked with significant progress and the number of children whose lives are directly enhanced by the project should drastically increase.

APPENDIX A

PAGES 15 AND 16 CONTAINING XEROXED NEWSPAPER
PUBLICITY ARTICLES WERE NOT REPRODUCIBLE AND WERE REMOVED
FROM THIS DOCUMENT PRIOR TO ITS BEING SUBMITTED TO THE
ERIC DOCUMENT REPRODUCTION SERVICE.

Students to farm in fall pilot plan

By BILL PALMER
Star Staff Writer

Anniston city school students will soon be running their own farm and, eventually, supplying the food for their lunches.

A unique pilot program is expected to start this fall at the Hedley Farm, a 167-acre facility owned by the city school system. Courses in horticulture and livestock production will at first be offered to 50 to 80 students in grades 10 through 12, according to Bob McLeod, coordinator of the farm program.

Eventually, McLeod says, it is envisioned that students will raise livestock, harvest crops, and operate a beef slaughterhouse and food warehouse. They will learn not only farming but agribusiness, the field of agriculture-related industries.

As an offshoot of this agribusiness program, students will be providing fresh foods at a reasonable cost to city school

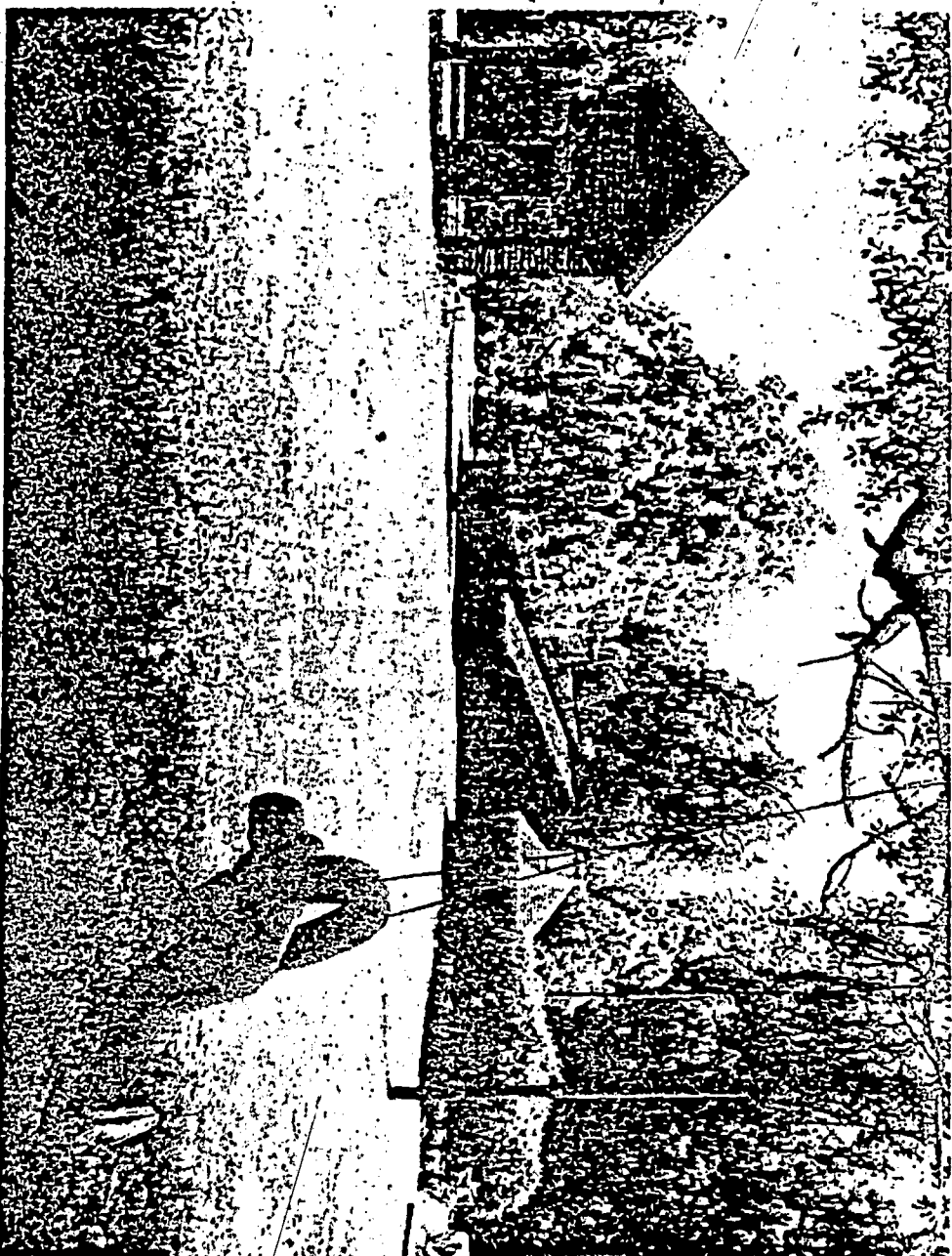
lunchrooms.

The program is envisioned as a pilot effort which other schools can copy. McLeod says he knows of no other programs like this in the United States.

A feasibility study has been completed and the next phase, McLeod says, is a one-year planning program to define specifics such as commodity availabilities vs. farm production, equipment needed, student transportation, construction design, time tables for implementation and actual expenses to be incurred. The estimated cost of this phase is \$35,000.

A REQUEST has been submitted by the school system for a one-year planning grant under Title III, Section 306 of the Elementary and Secondary Education Act, McLeod says.

He says the school system has been assured by the Alabama Department of Education that it will receive (See Farm, Page 6A)



Caretaker's son swings from tree on Holley farm
...lodge, in background, one of features of students' farm

Sunday, June 2, 1974

Farm

(Continued From Page 1)

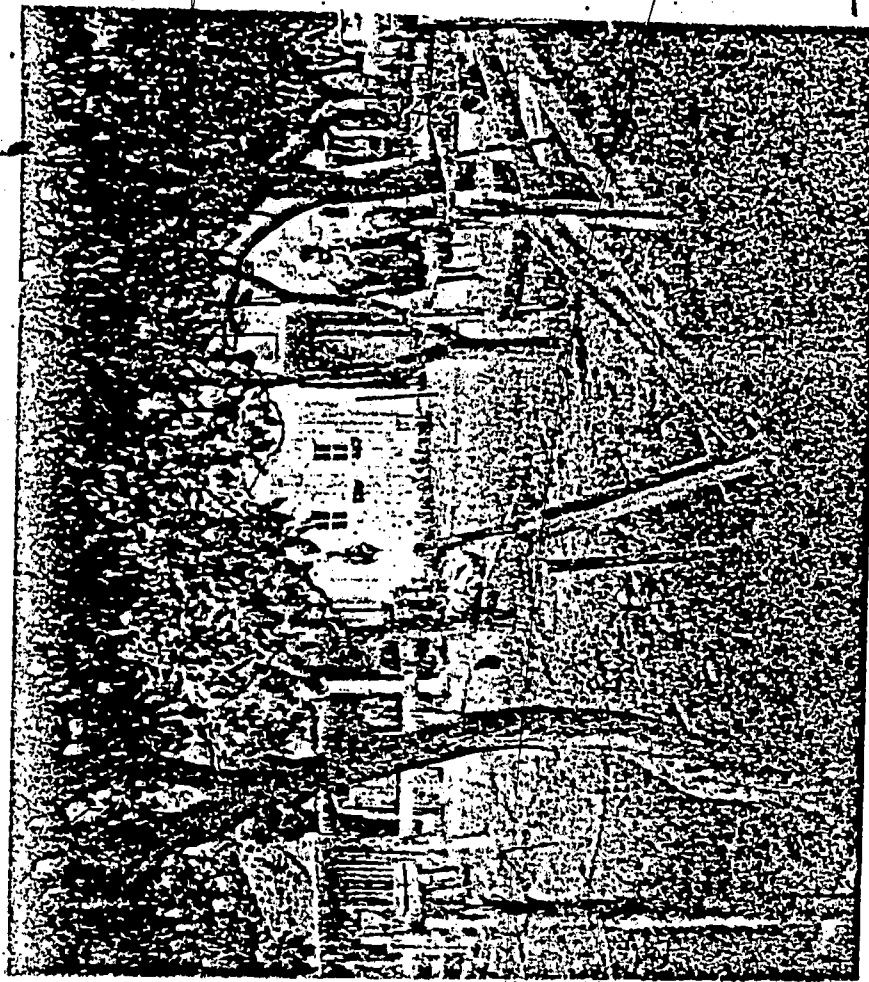
state funds for hiring two agribusiness teachers to teach the courses planned for this fall. The school presently has no agriculture or agribusiness curriculum.

One of the first important steps, when funds are available, is to hire a project director, someone knowledgeable in all areas of agriculture, who will work on curriculum development, McLeod says.

He says individual study guides will be prepared for each student, and a computer will be used to constantly monitor progress.

THE AUBURN Extension Service, the Calhoun County Extension service, and the East Alabama Regional Planning and Development Commission are all eager to help with the initial one-year planning program, McLeod says.

The local board of education has committed about \$40,000 to the program, McLeod says. This figure includes equipment which the school already owns for a machine shop to be set up at the farm. The thrust is to use available resources so as to



Barn on Holley farm needs renovation

minimize impact on the school budget, he says.

Alabama's two senators and Rep. Bill Nichols have taken a great deal of interest in the project, McLeod says, as has Sen. Hubert Humphrey, who has been strong supporter of school food service programs.

In addition to seeking government funding, school officials are exploring the possibility of obtaining funds from foundations. No foundations have been approached yet, but they may become a key revenue source, McLeod says.

cooling, freezing and canning facilities could also be built,

FARM CARETAKER Aubie Haynes says the soil of the farm is excellent. With proper fertilization, it is capable of producing 100 bushels of corn an acre, he says. He also notes that the approximately 250 pecan trees on the farm could be made more productive with proper fertilization and care.

About 160 of the 167 acres are usable for the agribusiness program, McLeod said. Large areas of the farm are presently used by private individuals for

providing academic motivation, according to Superintendent John L. Fulmer.

FULMER SAID in a letter to Paul Harvey, "We recognize that many intelligent, capable students are academic failures simply because they lack the motivation to participate in today's conventional educational programs." "We hope this (program) will be instrumental in decreasing the drop out rate," McLeod says.

Fulmer says local industry has encouraged the farm project. Local food suppliers, he says, predicting a possible 100 per cent increase in the cost of food by December of 1974, welcome an alleviating program of this nature.

He says school officials were also encouraged to learn that there is a good demand for graduates with the on-farm and off-farm skills that the agribusiness program will teach.

It is interesting to some that such a pilot program is starting in a school whose students come mostly from urban, industrial backgrounds. Fulmer hopes that the program will contribute toward solving "many of the social problems that are a result of the twentieth century urban migration."

At the least, as one observer says, it should help city youth become "friends with the land" and give them more appreciation of their environment.

Facilities at the farm include a lodge, designed for entertainment, which will be converted to offices, a machine shop and classrooms. A barn, which must be renovated, can be used for livestock.

Apart from developing agricultural skills, the agribusiness program is a significant step toward

SCHOOL PROJECT

Anniston to operate farm for lunchrooms

ANNISTON

The Anniston City Board of Education has unanimously agreed to begin an experimental school farm that will also provide food for the city's school lunchrooms.

Beginning immediately with a feasibility study and year-long planning program, the board said it plans to run the farm on a year-around basis for both school students and adults.

"In the 1970s and 1980s the big crisis is going to be in the area of food," school Supt. Dr. John Fulmer said. Here agribusiness can be taught through the production of a wide variety of farm crops as well as beef cattle and poultry. A cannery, storage facilities and a beef slaughter house are also included in the proposed program, he said.

The plan may take as long as a year and a half to put into operation, Fulmer said.

Board members agree

THE HOLLEY Farm — a 165-acre spread in the Weaver community — is owned by the city schools and had been considered as a future school site. The board had considered selling the land when the site was not needed in the foreseeable future. Now all board members are in agreement at the happy prospect of a school farm.

Fulmer explained that the dual objective of teaching agribusiness and providing food for the school lunchrooms made the program attractive financially as well as academically. The farm's produce will be shipped to the various schools on a regular basis, he said.

Much has been done in recent years to give students a technical education, Fulmer said, and the time has come to put increased emphasis on agriculture.

Anniston students may soon grow their own food

By JUDY JOHNSON
Star Staff Writer

The Holley Farm property, owned by the Anniston City Board of Education may soon be put to use — as a school-run farm — according to a proposal presented to the board Thursday night.

If the proposal is implemented, the 165-acre farm in Weaver will become an experimental facility with a dual purpose. It will teach students the latest in agri-business techniques, and it will provide food for the Anniston City School System's lunchroom program.

The school board has discussed selling the

farm in recent years, because it does not appear it will be needed as a school site in the foreseeable future. But now, school officials say, they are enthused about the envisioned project.

AS OUTLINED to the board, the farm would be used for production of a wide variety of farm products, including poultry, beef cattle and row crops. A beef slaughtering facility, cannery, and storage facility would be included on the site, and produce would be shipped to the various schools. The farm would be run on a year-around basis, and would be used to instruct both school students and adults in agri-business techniques.

"In the 1970s and 1980s the big crisis is going to be in the area of food," Supt. Dr. John L. Fulmer told the board. He said much has been done in recent years to give students a technical education, and the time has come to put increased emphasis on agriculture. The program as envisioned would probably have ties with the vocational-technical school, he said.

McLeod said the system hopes to obtain grants to help fund necessary studies and implementation of the project. He said a feasibility study and a one-year planning program must precede implementation of the program and it is not likely the program could be implemented in less than a year or a year and a half.

The board unanimously agreed to authorize school officials to begin taking steps toward implementation of the program.

IN OTHER MATTERS the board:

—Heard that the school system will receive more than \$100,000 more than originally expected for remedial reading programs funded by the Federal government this year. The extra money includes funds impounded during fiscal 1973 and an increase in funding for fiscal 1974.

The money will probably be spent to provide a course for all Title I reading teachers, to provide a six-week summer school program at each Title I school and to renovate some Title I classrooms, according to Mrs. Velma Curry, Title I coordinator.

—Selected the architectural firm of Christian, Boozer and Jenkins as architects for whatever construction is done with some \$750,000 the system expects to receive as a result of a state school bond issue.

March 9, 1974

The Anniston Star
LETTER TO ANNISTON

In regard to a recent article entitled, "Anniston Students May Soon Grow Their Own Food", I would like to commend the Anniston City Board of Education and staff for their insight and positive approach toward the food crisis.

It is encouraging to see that in the face of many adversities and setbacks, the Board of Education still has the time and energy to proceed with innovative programs of this nature.

If other school systems and educational institutions in the nation follow suit, Anniston will once again be credited with a major accomplishment and contribution in the area of education.

BETTY GARDNER

11212 Dellcrest Drive
Huntsville

South Carolina Council for Human Rights

May 9, 1974

Dr. John L. Fulmer
Superintendent of Anniston Public Schools
P.O. Box 1500
Anniston, Alabama 36201

Dear Dr. Fulmer:

This letter comes as a follow up to our conversation on Thursday regarding the innovative project started in your school system to educate students to the dynamics of Agri-Business.

Indeed, from what I have heard this project has received significant support from the business community, and is designed to impact on the regeneration of the community.

I do appreciate you sending me background information on Project Terra Firma, and extending an invitation to visit the project site.

I wish you the best of luck and success in this endeavor.

Sincerely yours,

Arthur F. Jones

Arthur F. Jones
Executive Assistant

AFJ:hmm

RD#1 Box 143
Fairfield, Penna. 17320
1 June 1974

Supt. of Schools
Anniston, Alabama

Dear Sir:

As a member of the Fairfield Area School Board, I was pleased to read in Paul Harvey's column and to hear his broadcast about your school farm.

Our school is in an agricultural area and should be able to carry out a program similar to yours.

I would appreciate any advice, suggestions, and information you can give me about the program so I can present the idea to our members at the next school board meeting.

My wife, who teaches in the Washington County School District, Maryland, is interested in presenting the idea to the County School Board there.

Respectfully yours,

Carl D. Abplanalp
Carl D. Abplanalp

York County Public Schools

P. O. Box 451

Yorktown, Virginia 23490

G. F. Pope

Division Superintendent

Telephone 887-2611

June 3, 1974

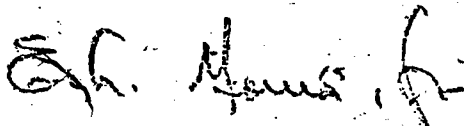
Superintendent
Anniston Public Schools
Anniston, Alabama

Dear Sir:

We were pleased to hear of your new approach to farming by way of the "Paul Harvey" radio program on Saturday, June 1.

We would appreciate receiving any available materials as we share some thinking in this direction.

Sincerely,



E. L. Morris, Jr.
Pupil Personnel Services

ELM,jr/jcg

BRADFORD, KENNEDY & NERVIG

ATTORNEYS AT LAW

503 JEFFERSON STREET SOUTH
WADENA, MINNESOTA 56482

R. S. BRADFORD
CHARLES R. KENNEDY
LUTHER P. NERVIG

June 11, 1974

TELEPHONE 631-2505
AREA CODE 218

Superintendent of Schools
Anniston Public Schools
Anniston, Alabama 36201

Dear Superintendent:

I am writing you as Chairman of the Board of Education of the Wadena/Independent School District No. 819 Wadena Minnesota. I recently overheard on a Paul Harvey newscast on June 1, 1974 the story about your interesting farm project that the School is conducting. Wadena is a farming community.

I am wondering if you could send me any brochures, facts, materials, or information you have on this as to how it was set up, projected costs, student participation (in terms of ages of students) and any other information that you might have possibly compiled on what sounds to be a very fascinating educational venture.

Thank you for any information you can furnish me.

Yours very truly,

BRADFORD, KENNEDY & NERVIG


Charles R. Kennedy

CRK:cg

MY WEEKLY READER

Editorial Offices: 245 Long Hill Road, Middletown, Connecticut 06457 Tel: (203) 347-7251

June 10, 1974

Board of Education
Anniston Schools
Anniston, Alabama

Dear Sirs,

Your school farm program was mentioned recently on a local radio program. It sounds very interesting and worthwhile.

I am a writer for My Weekly Reader 3. As you may already know My Weekly Reader is a series of graded classroom periodicals reaching nearly 13 million K-6 girls and boys each week.

Please send me any information about the program that you have available. I am considering writing a story about the program in My Weekly Reader 3. If the story is used, copies will be sent to you. Photographs showing girls and boys at work would also be helpful.

Thank you for your cooperation.

Sincerely,

Martha P. Howlett

Martha P. Howlett
Editor
MY WEEKLY READER 3

MPH:sc

Copy: Mr. Bob McLeod

1207 Alameda Lane
Cocoa, Florida 32922
May 19, 1974

Dr. John Fulmer
School Superintendent
Anniston, Alabama

Dear Sir:

A newspaper article stated that your city school children are learning farming by farming. We have a daughter who has registered for a course in agriculture for the coming year, her junior year. She is interested in your program and as parents we wish to give her the opportunity of attending your program. If this is possible, is there a place where we could acquire room, board, and if needed, transportation?

We realize this request will be time consuming for you but if it isn't too much to ask we would appreciate hearing from you as soon as possible.

We can be in Anniston on June 17, or any date following. Also, we can be reached by telephone at 305 636 8106 after 4:00 P. M.

Any consideration given and any information sent us will be greatly appreciated.

Sincerely yours,

Kathleen H. Lowe
(Mrs.) Kathleen H. Lowe

June 6, 1974

COOPY
Mrs. Kathleen H. Lowe
1207 Alamanda Lane
Cocoa, Florida 32922

Dear Mrs. Lowe:

Please find enclosed a copy of our Project TERRA-FIRMA, Threshold of Educational Reform-Restructuring Agriculture For Inner-City Related Motivation and Accomplishment that you have requested.

We will put you on our mailing list and should there be other developments you will be mailed further information.

Sincerely yours,

John L. Fulmer
Superintendent

JLF:ah



give
VETERANS ADMINISTRATION
HOSPITAL
LEXINGTON, KENTUCKY 40507

IN REPLY
REFER TO:

January 22, 1975

Mr. Robert McLeod
Foodservice Director
Sura Firma Project
Walker Farm
Anniston, Alabama

Dear Mr. McLeod,

I am a dietetic intern at the University of Kentucky Medical Center and Veterans Administration Hospital in Lexington, Kentucky.

I have just finished reading an article about your Sura Firma project in Food Management Magazine and it sounds like a fantastic idea! I and another intern are extremely interested in pursuing new avenues in food and nutrition in view of the economic, food and energy crises facing all of us. If possible, we would like to visit Walker Farm, talk to your staff and students, and see the program in action. If this would be at all possible, please write to us so that we may plan a date at your convenience. We would have only limited time away from our jobs (three days including travel time), so we would not take too much of your time.

Show veteran's full name, VA file number, and social security number on all correspondence.



VETERANS ADMINISTRATION
HOSPITAL
LEXINGTON, KENTUCKY 40507

IN REPLY
REFER TO:

We will anxiously wait for your answer.

Sincerely,

*Vicki Mering and
Valerie Venter, Dietetic Interns
H-36 Medical Center
University of Kentucky
Lexington, Kentucky,
40506*

11-18-74

Dear Sir,

Today I read about Terra Firma for the first time in Food Management Magazine. The project just has to be a success!

I am wondering if there might be a place at your farm for me. I have a B.S. in Biological Health from Penn State University, where my major was nutrition. I was raised on a farm, and since my graduation in June I have been working as Assistant Food Service Director in a Nursing Home. I was in a 4-H Club for eight years, and I can milk cows, grow vegetables, drive tractor, and cook and sew.

I would help the children learn about "living off the land" at Terra Firma - with hopes that some day I would be able to help initiate the same kind of program in other school districts throughout the country.

I would be glad to work for just my room and board, and could come as soon as you'd need me. And if I'm not needed at Terra Firma, perhaps I could just come down and observe for awhile in case another project started up. I would be glad to come where else when I could be of some help.

Please let me know what you think Mr. McLeod. It will be appreciated.

Sincerely,
Dorothy Gordon



State of Alabama
Department of Education

DIVISION OF
VOCATIONAL EDUCATION and COMMUNITY COLLEGES
State Office Building
Montgomery, Alabama 36104



LeRoy Brown
State Superintendent

February 6, 1975

T. L. Faulkner
State Director

Dr. John L. Fulmer, Superintendent
Anniston City Board of Education
Post Office Box 1500
Anniston, Alabama 36201

Dear Dr. Fulmer:

Again, I want to commend you on the fine way in which you planned and conducted the meeting Saturday, January 25, at the TERRA FIRMA project in Anniston.

I want to thank you for sending me the photographs of Mr. Harvey and me. It seems that Mr. Harvey thoroughly enjoyed his visit and we were much impressed with his broadcast. I appreciated your letting me listen to it on the telephone; and as you know, Mr. Higginbotham brought a copy of it to Dr. Brown and me. We are making good use of it by playing it to our staff and many others as they visit us.

It is a real pleasure to work with you, and let us know if we can help in any way.

Sincerely yours,

T. L. Faulkner, State Director
Vocational Education and Community Colleges

TLF:jā



State of Alabama
Department of Education
State Office Building
Montgomery, Alabama 36104



LeRoy Brown
State Superintendent of Education

February 18, 1975

Dr. John L. Fulmer, Superintendent
Anniston Public Schools
Post Office Box 1500
Anniston, Alabama 36201

Dear Dr. Fulmer:

Thank you for the photographs which were taken during the TERRA FIRMA Program in Anniston recently where Mr. Paul Harvey was a guest. I thoroughly enjoyed the program, my visit and talking with Mr. Harvey.

I appreciate your thoughtfulness in sending me the photographs.

Sincerely yours,

LeRoy Brown
State Superintendent of Education

LRB:f



LeRoy Brown
State Superintendent

State of Alabama
Department of Education

DIVISION OF
VOCATIONAL EDUCATION and COMMUNITY COLLEGES
State Office Building
Montgomery, Alabama 36104



T. L. Faulkner
State Director

January 29, 1975

Dr. John L. Fulmer, Superintendent
Anniston City Board of Education
Post-Office Box 1500
Anniston, Alabama 36201

Dear Dr. Fulmer:

I would like to thank you for the opportunity to attend the program last Saturday at the Anniston Farm Center. I am sure that Mr. Harvey, Dr. Brown, Dr. Faulkner, and all those in attendance were impressed with the things they saw and heard.

You and members of your Board are to be commended on your interest in serving the needs of all students in your system. I am sure that we will all be proud of the results accomplished through this innovative program. It is our desire to be of any help we can.

Sincerely yours,

H. W. Green

H. W. Green, State Supervisor
Agribusiness Education

HWG:ad



LeRoy Brown
State Superintendent

State of Alabama
Department of Education

DIVISION OF
VOCATIONAL EDUCATION and COMMUNITY COLLEGES
State Office Building
Montgomery, Alabama 36104



T. L. Faulkner
State Director

April 4, 1975

Dr. John L. Fulmer, Superintendent
Anniston City Board of Education
1425 Woodstock Avenue
Box 1500
Anniston, Alabama 36201

Dear Dr. Fulmer:

Thank you for your letter of March 27 concerning your TERRA FIRMA project stating that much progress is being made and that you are pleased with what is being done at this time.

You may be assured that we are also happy and pleased with what you and your vocational teachers are doing in developing this very important program. This has helped to create interest in vocational programs throughout the state, and I might say throughout the nation thanks to our friend, Paul Harvey. Incidentally, he came back later with a broadcast over the TV which was as good or better than the first one. We have received many letters and telephone calls throughout the nation concerning his broadcast.

You may be assured that any of our state staff and vocational education are ready and willing to work with you at any time, and all that you need to do is let us know what your needs are. It is a real pleasure to work with you.

Sincerely yours,

A handwritten signature in dark ink, appearing to read "Faulkner", is written over a horizontal line.

T. L. Faulkner, State Director
Vocational Education and Community Colleges

TLF:jd

HOWARD W. CANNON, NEV., CHAIRMAN
 CHARLOTTE PELL, R.I.
 ROBERT C. BYRD, W. VA.
 JAMES B. ALLEN, ALA.
 HARRISON A. WILLIAMS, JR., N.J.
 MARLOW W. COOK, KY.
 HUGH SCOTT, PA.
 ROBERT P. GRIFFIN, MICH.
 MARK O. HATFIELD, OREG.

Mr. McLeod

WILLIAM MCWHORTER COCHRANE, STAFF DIRECTOR
 HUGH Q. ALEXANDER, CHIEF COUNSEL
 BURKETT VAN KIRK, MINORITY COUNSEL

United States Senate

COMMITTEE ON
 RULES AND ADMINISTRATION
 WASHINGTON, D.C. 20510

April 10, 1974

Mr. John L. Fulmer
 Superintendent
 Anniston Public Schools
 Post Office Box 1500
 Anniston, Alabama 36201

Dear Mr. Fulmer:

Thank you for the copy of your letter to Paul Harvey. I believe you have outlined the particulars of "Terra Firma" extremely well, and I will hold optimistic thoughts that Mr. Harvey will be able to offer some workable suggestions.

It was a special pleasure to see you and members of your group several days ago, and I appreciate being kept up to date on the project. As you know, I want to do everything I can to help, and I am taking this opportunity to emphasize my support of this worthwhile endeavor.

With kindest regards, I am

Sincerely yours,


 James B. Allen

JBA/1st
 Enclosure

HERMAN E. TALMADGE, GA., CHAIRMAN
JAMES O. EASTLAND, MISS.
GEORGE MCCOY, S. DAK.
JAMES R. ALLEN, ALA.
HUBERT H. HUMPHREY, MINN.
WALTER D. HUDDLESTON, KY.
DICK CLARK, IOWA
CARL T. CURTIS, NEBR.
GEORGE D. AIKEN, VT.
MILTON W. YOUNG, N. DAK.
ROBERT DOLE, KANS.
HENRY BELLMON, OKLA.
JESSE HELMS, N.C.

COTY S. MOUSER, CHIEF CLERK

INFORMATIONAL ITEM NO. 1,008

United States Senate

COMMITTEE ON
AGRICULTURE AND FORESTRY
WASHINGTON, D.C. 20510

April 26, 1974

Mr. John L. Fulmer
Superintendent
Anniston Public Schools
P. O. Box 1500
Anniston, Alabama 36201

Dear Mr. Fulmer:

Thank you for your kind words concerning my support for School Lunch Programs. I appreciated receiving a copy of your proposed agriculture education program. This proposal has many educational and nutritional aspects which I find appealing.

I would be happy to provide a word of support for the proposal if you advise me as to when it will be submitted for funding.

With best wishes.

Sincerely,


Hubert H. Humphrey

APPENDIX B

SWINE PROGRAM ANNISTON AGRIBUSINESS CENTER 1975 - 1976

January, 1975

The swine program was started with two bred gilts and one boar.

Farrowed 15 pigs in January, 1975

The sows were re-bred and due to farrow July 15, 1975

The farm will need to save six (6) gilts from the pigs farrowed in January for additional sows to be put back in the sow herd. The sow herd will need to have eight (8) sows. This will give us enough pigs for teaching purposes, showing and selling, and marketing to teach the students at the AGribusiness Center.

These gilts will need to be bred between August 25, 1975 to October 10, 1975. A boar should be purchased and bred to the gilts.

The original sows will farrow again between July 15 - 20, 1975.

The gilts and sows will then be re-bred and due to farrow between December 15, 1975 to January 30, 1976. The gilts and sows can be re-bred to farrow again in July and August of 1976.

The farrowing schedule therefore should be as follows:

January, 1975	Two (2) Foundation Sows
July, 1975	Original Two (2) Sows
January, 1976	Two Original Sows and the six (6) retained gilts
July, 1976	Two (2) Sows and the six (6) Gilts

FINAL REPORT

Project Number - RCU-D-76-006-B

TERRA FIRMA

THRESHOLD OF EDUCATIONAL REFORM RESTRUCTURING AGRICULTURE
FOR INNER CITY RELATED MOTIVATION AND ACCOMPLISHMENTS

Exemplary Project in Vocational Education
Conducted Under
Part D of Public Law 90-576
(of State Part)

The project reported herein was conducted pursuant to a grant with the Alabama State Department of Education, Division of Vocational Education. Contractors undertaking such projects under State Government sponsorship are encouraged to express freely their professional judgement in the conduct of the project. Points of view or opinions stated do not, therefore, necessarily represent official State Department of Education position or policy.

John L. Fulmer,
Anniston City Schools
P. O. Box 1500
Anniston, Alabama 36201

October 1, 1975

TABLE OF CONTENTS

ABSTRACT.....	1
I. INTRODUCTION.....	2
II. OBJECTIVES.....	2
III. PROJECT PERSONNEL.....	3
IV. PROCEDURES.....	4
V. ACCOMPLISHMENTS.....	5
VI. THE FUTURE.....	5

ABSTRACT

The research, development and concurrent implementation of the TERRA FIRMA Project began to excel in preparation of the 1976 school year.

Continued funding after September 31, 1976 was procured through a legislative appropriation providing funds for Capital Outlay, Operation Maintenance and Salaries.

The months of July, August and September were spent in preparation, establishing procedures where activities and operations could be effectively evaluated, documented and dissiminated to provide a cost/efficient, time-saving tool for other LEA's implementing like projects.

I. INTRODUCTION

Anniston, Alabama, a city of approximately 32,000 population is located in the Northeastern section of the State. Historically the city has been one of the leading soil pipe producers in the world. Although new technology has removed to a great extent the need for soil pipe, Anniston still retains the characteristics of a small industrial city.

The racial composition of public schools has changed since 1965 from a 30 percent minority to approximately 55 percent minority. The Anniston school district is composed of one senior high school, one junior high school and seven elementary schools. The pupil population, grades one through twelve is 5,587, 2,520 of which are white with 3,067 black. 1,372 of the total pupil population come from low income families. The senior high school is a comprehensive high school with a strong department of Vocational and Industrial Education.

II. OBJECTIVES

The specific objectives for school year 1975-76 are:

1. To provide morning and afternoon instruction in livestock production and horticulture according to curriculum outlined by the State Department of Education. It is anticipated the 70 - 75 students will participate in the second year's activities.
2. Provide leadership training for each student enrolled so that they may participate in leadership-citizenship and cooperative activities.

3. Provide opportunities for students to participate in county, state, and national incentive program.
4. To create a productive farm where students will be exposed to real life economic situations. By planting, harvesting, and processing row crops for consumption in the school's lunchrooms, students will be involved in a productive, personally identifiable process in which they can relate to practical situation.

For Grades 7 - 8

1. Provide 25 hours orientation and participating experience. Students who are enrolled in the courses will assist in conducting these orientation programs.

For Grades 1 - 6

1. Accomodate approximately one hundred students per week with conducted tours to provide orientation relating to agriculture experiences.

III. PROJECT PERSONNEL

At present there is a total of seventy students enrolled in the program. Approximately thirty-five are enrolled in Horticulture and approximately thirty-five in Livestock Production. All students enrolled are bussed from Cobb Junior High School and Anniston High School to the farm for two hour blocks of instruction. All the students participating are enrolled in the 9th and 10th grade.

Personnel involved in the program include two full-time instructors. The food service director spends 50% of his time in coordinating all of the program's activities.

IV. PROCEDURES

The project's objectives and continued development will be accomplished through the coordination and integration of five concurrent functional areas. An outline of these areas follows:

A. Curriculum Development

1. Adult Programs

- a. Summer classes
- b. Evening classes

2. Students

- a. Normal
- b. Exceptional

3. Summer Programs

- a. Work study
- b. Other

4. Courses Other than Agri-Business

5. Computer Records

6. Supplementary Activities.

B. Capital Improvements

1. Farm Equipment

2. Additional Classroom Facilities

3. Food Warehouse

4. Land Usage Plan

C. Farm Operation

1. Livestock

2. Horticulture

3. Computer Records

D. Funding

1. Equipment
2. Farm Operation
3. Capital Improvements
4. Consultant Fees

E. Development of Food Service Supplement Program

1. Determine most desirable crops
2. Processing Procedures

V. ACCOMPLISHMENTS

Since this report is only for three months prior to the second school year's operations, accomplishments include only the preparation process for the second years objectives.

VI. THE FUTURE

The Anniston City Board of Education intends to proceed in the implementation of TERRA FIRMA with hopes of establishing a pilot type situation that other School Systems can follow.

Plans are currently in progress to expand the curriculum to provide courses for a broad range of learning exceptionalities, to include the mentally and physically handicapped.

Hopefully in the near future facilities will be provided for canning, bee keeping, catfish breeding, and a wild life refuge. Additional classrooms for the increasing enrollment are also in the plans.

If the enthusiasm and interest that has prevailed since TERRA FIRMA's inception continues, the next several years should be marked with significant progress and the number of children

whose lives are directly enhanced by the project should drastically increase.