

DOCUMENT RESUME

ED 118 317

RC 008 992

TITLE Student Handbook--Haskell Indian Junior College, Lawrence, Kansas.

INSTITUTION Haskell Indian Junior Coll., Lawrence, Kans.

PUB DATE [73]

NOTE 82p.

EDRS PRICE MF-\$0.83 HC-\$4.67 Plus Postage

DESCRIPTORS *American Indians; Degree Requirements; Financial Support; *Guides; History; Housing; *Junior Colleges; Photographs; School Recreational Programs; *School Services; *Student College Relationship; Student Government; Student Responsibility; Student Rights

IDENTIFIERS *Haskell Indian Junior College; Kansas (Lawrence)

ABSTRACT

Designed for prospective and in-coming American Indian students, this handbook on Haskell Indian Junior College presents information relative to the following: (1) School Calender; (2) Office Directory; (3) History and Traditions (school hymn and song, historical development, and statement of school philosophy), (4) Academic Life (degree programs, vocational programs, what it means to be a college student, academic honors, credit and grading system, academic procedures, and the Haskell Library); (5) Living at Haskell (campus housing, dormitory directory, suggested annual budgets for students, off campus housing, child care center, and student dining facilities); (6) Student Life at Haskell (student activities, student senate, campus activity board, school newspaper and yearbook, HIJC bookstore, student bank, Haskell Indian Club, and religious affairs); (7) Haskell's Helping Services (counseling, testing, legal aid, campus security program, financial aid program, health services, and dental program); (8) Student Rights (stipulations, definitions, and procedural due process); (9) Student Responsibilities (student responsibility guidelines, student conduct code, automobiles, and campus car ownership); (10) Appendices (information about the community and the University of Kansas and the 1973 Haskell football, basketball, and track schedules). (JC)

* Documents acquired by ERIC include many informal unpublished *
* materials not available from other sources. ERIC makes every effort *
* to obtain the best copy available. Nevertheless, items of marginal *
* reproducibility are often encountered and this affects the quality *
* of the microfiche and hardcopy reproductions ERIC makes available *
* via the ERIC Document Reproduction Service (EDRS). EDRS is not *
* responsible for the quality of the original document. Reproductions *
* supplied by EDRS are the best that can be made from the original. *

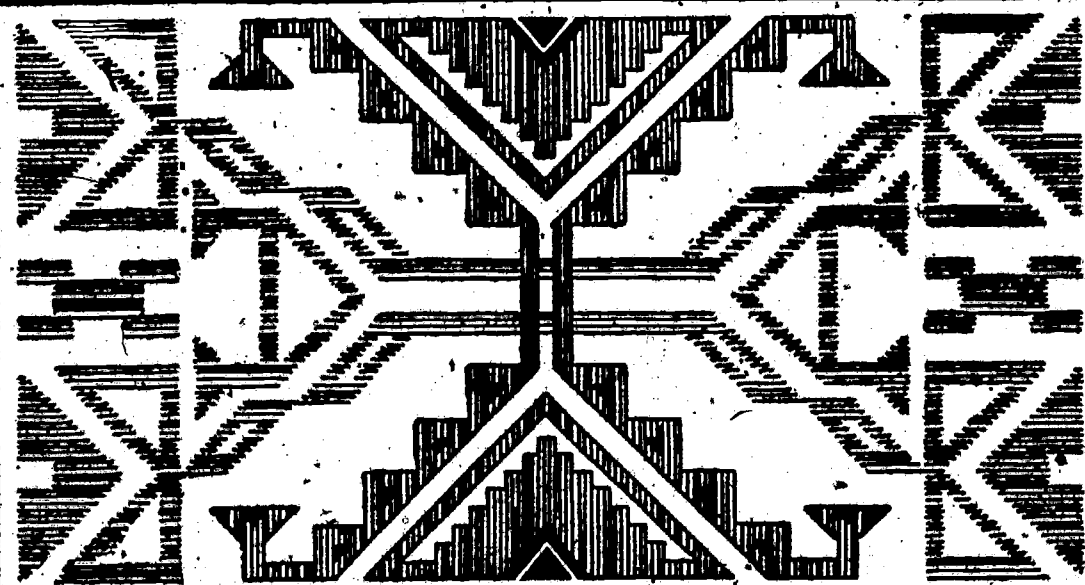
U.S. DEPARTMENT OF HEALTH,
EDUCATION & WELFARE
NATIONAL INSTITUTE OF
EDUCATION

THIS DOCUMENT HAS BEEN REPRODUCED EXACTLY AS RECEIVED FROM THE PERSON OR ORGANIZATION ORIGINATING IT. POINTS OF VIEW OR OPINIONS STATED DO NOT NECESSARILY REPRESENT OFFICIAL NATIONAL INSTITUTE OF EDUCATION POSITION OR POLICY

Haskell JuCo

Student Handbook

Lawrence, Kansas



ED118317

RL008992

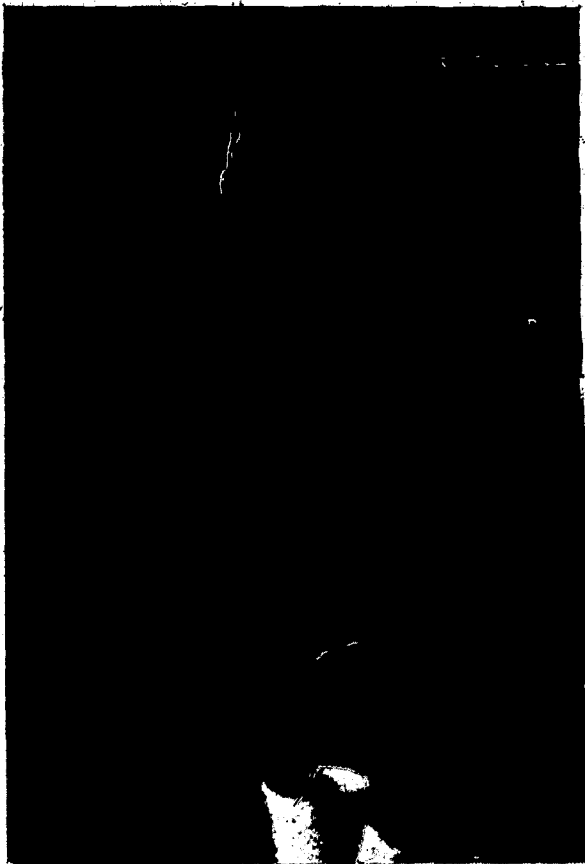
STUDENT HANDBOOK

**HASKELL INDIAN
JUNIOR COLLEGE**

LAWRENCE, KANSAS

STUDENT SERVICES DIVISION

[1973]



TO HASKELL STUDENTS:

We want to welcome you to Haskell Indian Junior College. You are very fortunate to be entering a school that is rich in tradition, enjoys an excellent reputation with Indian people, has a loyal and successful alumni, offers a comprehensive junior college program, is supported and directed by a competent Board of Regents and has an excellent and dedicated staff to assist you in your educational venture.

We sincerely hope that you take full advantage of all Haskell has to offer and that your presence here will be a positive and constructive force on the campus.

This is an opportunity for you to explore the various areas of education and to develop your academic and vocational skills. In the next few years your experiences here will influence what your philosophy and actions will be for the remainder of your life. Good luck to you and may you get the most out of Haskell and what it offers.

Wallace E. Galluzzi
President

TABLE OF CONTENTS.

SCHOOL CALENDAR.	1
OFFICE DIRECTORY	2
HISTORY AND TRADITIONS	
School Song and Hymn	4
History.	5
Statement of Philosophy.	7
ACADEMIC LIFE	
Academic Life At Haskell	11
Being A College Student.	13
Academic Honors.	13
Credit and Grading System.	14
Academic Procedures.	15
Haskell Library.	19
LIVING AT HASKELL	
Campus Housing	21
Dormitory Directory.	24
Suggested Annual Budgets for Students.	25
Off Campus Housing	27
Child Care Center.	32
Student Dining Facility.	34
STUDENT LIFE AT HASKELL	
Student Activities	36
HIJC Student Senate.	37
Campus Activity Board.	37
School Newspaper	40
School Yearbook.	40
HIJC Bookstore	40
Student Bank.	41
Haskell Indian Club.	42
Religious Affairs.	43

IF YOU NEED HELP AT HASKELL

Counseling Services	45
Testing Services	46
Legal Aid	46
Campus Security Program	47
Financial Aid Program	48
Health Services	54
Dental Program	56

YOUR RIGHTS AS STUDENTS

Student Rights	59
Definitions	60
Procedural Due Process	60

YOUR RESPONSIBILITIES AS STUDENTS

Student Responsibility	65
Student Conduct Code	66
Automobiles - Your Responsibility	67
Campus Car Ownership	68

APPENDICES

Information About The Community	71
University of Kansas	73
1973 Haskell Football Schedule	74
1973 Haskell Basketball Schedule	75
1973 Haskell Track Schedule	77

SCHOOL CALENDAR 1973-74

HASKELL INDIAN JUNIOR COLLEGE

LAWRENCE, KANSAS

Fall Registration	August 27, 28
Classes Begin	August 29
Last enrollment or schedule change	September 7
Midterm	October 19
Christmas Holidays	December 21 - January 13
Spring Registration	January 14, 15
Classes Begin	January 16
Last enrollment or schedule change	January 25
Midterm	March 8
Spring Vacation	March 11 - March 17
Graduation	May 17
Summer School	June 3 - July 26

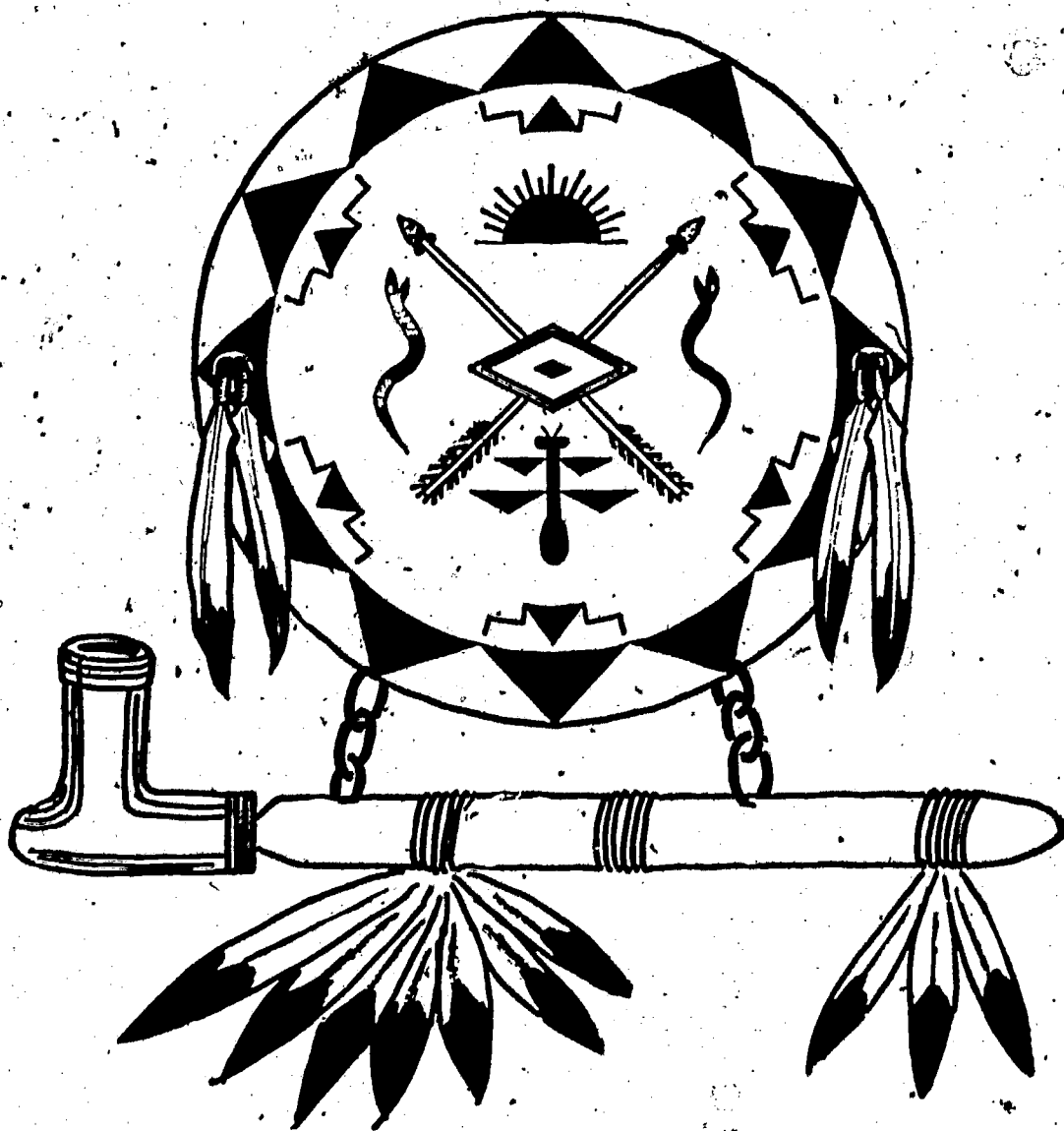
Days not in session: September 3, October 8, October 22,
November 22-23, February 18.

OFFICE DIRECTORY

841-2000

Title	Name	Extension
President	Wallace E. Galluzzi	20/21
Assistant to the President	Everett E. Bowman	35/50
Dean of Students	Frank L. Quiring	32
Dean of Instruction	Bill J. Burgess	57
Director of Admissions & Records	Haddon S. Moats	36
Administration Officer	Seth Irving	22/23
Director of Student Activities	H. E. Llewellyn	31
Director of Student Housing	Elmer L. Blackbird	30
Director of Financial Aids	Joseph L. Mzhickteno	33

HISTORY & TRADITIONS AT HASKELL



HASKELL HYMN

Once Pawnee teepee ringed these plains.
Here roamed the Kiowa.
And pioneer toiled o'er Indian Trails
Beside the River Kaw

On ancient Indian hunting grounds
Great Lonewolf pled for schools,
To teach the tribes the white man's way
Of life, of books, of tools.

We sing of Haskell's honored past,
Of greater days to come.
Beneath her friendly, spreading elms
The Tribes have found a home.

Great Spirit, give us strength to live,
That we may take our place
With kindness, courage, hope, and faith,
An honor to our race.

HASKELL SCHOOL SONG

Onward Haskell, Onward Haskell!
This is Our War Cry.
Keep the Good Old Name Before You.
Never Let It Die,

Onward Haskell, Onward Haskell
Fight for the Dear Old School,
Fight, Indians, Fight for H.I.'S
Dear Old Name.

HISTORY OF HASKELL INDIAN JUNIOR COLLEGE

Haskell Indian Junior College is an educational institution for American Indians. Since its beginning in 1884 it has been a leader in Indian education and is among the oldest government-supported schools in the United States.

Wherever in the United States you find Indian people, you will find those who know Haskell. Haskell's reputation extends beyond the Indian community into the non-Indian society knowledgeable about Indian education. Among our alumni we have had a Commissioner of Indian Affairs, Area Directors, teachers for other Indian schools and many others outstanding in their field.

When Haskell opened in 1884 its official name was the United States Indian Industrial Training School and the curriculum centered around the manual labor of agriculture in grades 1 - 5. By 1894 Haskell was a training teachers in a Normal Department. One year later a Commercial Department was created offering business training. In 1890 the school's official name was changed to Haskell Institute, after the Kansas Congressman responsible for locating the school in Kansas. This name remained the official name until it was changed in 1970.

By 1899 the Agriculture curriculum had expanded into a variety of specialized areas such as fruit culture and dairying. A Trades Department was added. In 1901 a uniform course of study was introduced by the Bureau of Indian Affairs.

Through the 1920's Haskell was a football power in the midwest, playing such schools as Loyola and Boston College. In 1926 Haskell scored 558 points to their opponents' 70 points. The 1926 football scores are listed below with Haskell's score first:

Drury College	65 - 0	Loyola University	27 - 7
Wichita University	57 - 0	Boston College	21 - 21
Des Moines	55 - 0	Michigan A & M	40 - 7
Morningside College	38 - 0	St. Xavier	27 - 7
Dayton University	30 - 14	Tulsa University	27 - 7
Jackson University	95 - 0	Hawaiian All Stars	
Buckness University	36 - 0	at San Francisco	40 - 7

One player, fullback Mayes McLain, scored 254 points in the 1926 football season. This was the largest number of points ever registered by any American College football player.

By 1927 the secondary curriculum had been accredited by the State of Kansas, and Haskell was offering post-high school courses in a variety of areas. By 1935 Haskell High School graduates were being actively recruited to remain and take up a post-high vocational study. Our graduates were very successful in the colleges across the land. For example, Haskell graduate James Gibson attended Southeastern State College at Durant, Oklahoma and was listed in Who's Who of American College Students; Billy Mills attended Kansas University and went on to Olympic fame; and Claude Sumner, another Kansas University graduate returned to the Haskell campus in 1971 as probably the youngest Commencement speaker in the history of Haskell.

By 1966 the school was investigating the higher education needs of Indian young people and the possibility of junior college accreditation. Final State accreditation was formally received in 1970. We are now offering a comprehensive junior college program. Students have a choice of over 20 vocational-technical courses, plus a wide range of choice in the two-year general education curriculum leading to an Associate of Arts degree.

With this kind of opportunity, the Indian student should find the new Haskell Indian Junior College the best place in the nation to get an education.



STATEMENT OF PHILOSOPHY

The educational program at Haskell Indian Junior College allows a student to pursue various interests. We believe that the college must provide both a general education and the best in specialized study. General education is designed to produce a citizen worthy of a free society; specialized study aims to equip a student to take his place in the vocation or the profession of his choice.

We at Haskell believe that the college should give personal attention to students in an atmosphere of cordiality, friendliness, and respect. We believe that the college should afford the student opportunities to communicate with staff and administrators, and we believe that the college should provide adequate opportunities for cultural and social activities which enhance the educational experience.

The goals and objectives of the Haskell program have developed from the needs of the Indian people, the nature of the respective Indian communities, and the belief that post-high school education should be afforded to all high school graduates and other adults.

The educational task of Haskell Indian Junior College is therefore designed:

1. To identify and analyze the educational needs of the Indian community as a necessary prerequisite for the creation of a viable and meaningful course of studies.
2. To provide college transfer and other programs of vocational, technical, business, and general education courses which are directly responsive to the identified needs of the Indian community.
3. To provide guidance and counseling, through formal services and informal teacher-student relationships, designed to permit the student to assess his interests, capabilities, and deficiencies in order that he may set realistic and attainable educational goals.
4. To provide vocational and technical programs designed to prepare students for employment and to prepare students to advance beyond the entry levels of employment, into positions of managerial responsibility.
5. To provide a general education curriculum designed to preserve, maintain, and propagate Indian culture and tradition, and to meet the specialized needs of Indian students.

6. To provide a sequence of academic programs compatible with those offered in the first two years by baccalaureate-degree granting institutions.
7. To provide a collegiate atmosphere and co-curricular student activities, limited only by need and resources, which will broaden and deepen the student's culture and enhance his awareness and appreciation of his role in society.
8. To provide educational services to the respective Indian communities which are designed to cope with cultural and societal problems of the respective geographical areas.
9. To extend the physical and cultural activities of Haskell Indian Junior College beyond the campus in order to become a vital part of the local community offering service and becoming involved whenever possible.

Haskell Indian Junior College encourages each student to discover his own abilities as well as to recognize his own limitations and to plan his educational program accordingly.

Students are encouraged to acquire the basic knowledge and skills necessary for their advanced training or their chosen occupations. They are encouraged to develop the ability to think critically and objectively and to make sound judgments. They are encouraged to formulate personal philosophies which will lead them to self-realization.

ACADEMIC LIFE AT HASKELL



ACADEMIC LIFE AT HASKELL

The educational programs at Haskell Indian Junior College are designed to provide pertinent and diverse educational opportunities for young Indian people and equip each student with the basic skills and knowledge, cultural, and social activities, in order that they may set realistic and attainable educational goals.

Students entering the college may select curricula design to accomplish the following:

1. Those who wish to extend their education beyond high school and to pursue subjects that will round out and complete their education. Students who fall in this category are: A. Transfer students from another junior college or college; B. Students seeking retraining in vocational/technical subjects; C. Special students who are interested in specific courses or cultural experience.

2. Courses which lead to an Associate of Applied Science Degree in special subjects which prepares students for positions in business and industry or continuation to four year institutions.

3. Those who desire to complete a four year college education and to obtain the first two years at Haskell (Associate of Arts Degree).

4. Vocational courses, one year in duration, to prepare students to achieve and employable-level skill. To meet the various needs of these groups, each program consists of a combination of required subjects and elective subjects.

Program listing by major division and departments are as follows:

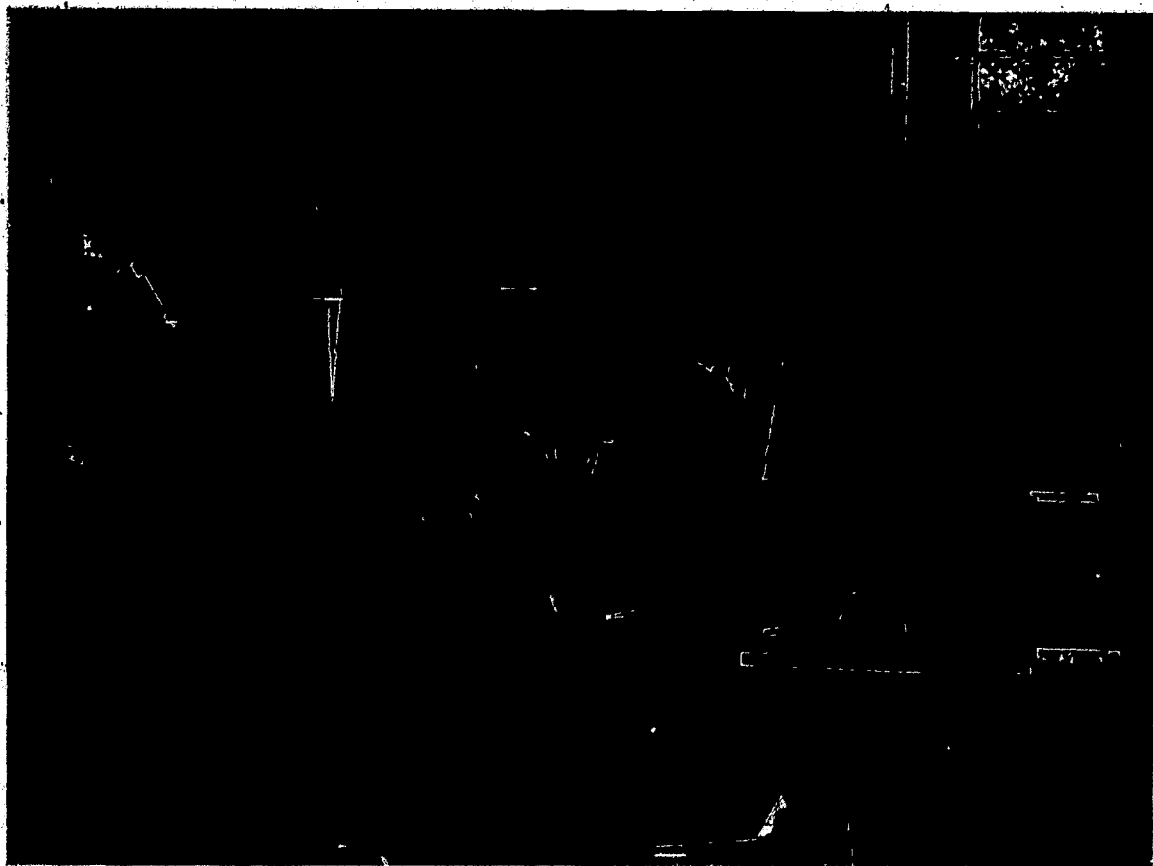
Humanities Division: English, Communication, Languages, Art, Music.

Business Division: Accounting, Secretarial, Data Processing, Business Education.

Industrial and Mechanical Technology Division: Auto Mechanics, Graphic Arts, Technical, Construction Technology, Food Service.

Life Science Division: Physical Education, Math/Science, Home Economics, Nursing, Social & Behavioral Sciences, Medical Technology, Radiation Technology, Dental Assisting.

Students who intend to continue their studies beyond an AAS or AA degree should select their courses to meet division and department requirements, as outlined in the catalog and should obtain a copy of the catalog of the four year college they hope to attend in order to meet the requirements of the senior institution.



Being A College Student.

College is very different from high school. You will find that more is required of you in your classes, and that you will have to exert more responsibility and initiative in order to meet course requirements. For example, if you are a GE student, you will find that you are in class or laboratory less than twenty hours a week. But you will receive substantial amounts of homework that you will be expected to complete during the day when you are not in class and in the evening.

You will also find that regular class attendance is a necessity if you are to succeed academically.

Students at Haskell Indian Junior College are expected to maintain regular and punctual attendance in all classes and activities in which they enroll. Failure to do so may indicate lack of serious purpose and lead to school dismissal. There is no such thing as a permissible number of cuts or an officially recognized number of excuses.

Each instructor determines when a student's absences or tardiness have reached the point where he or she is no longer meeting the minimum requirements set by the college. It is the responsibility of the individual instructor or his division to determine when a student has accumulated an excessive number of absences. In cases of unavoidable absence, the student is responsible for notifying instructors and making the necessary arrangements to do makeup work at the discretion of the instructor. Instructors may take a student's attendance record into account in computing his grades.

Students representing the college in any capacity which necessitates their absence from classes should make arrangements in advance with their individual instructors.

You Will Want to Know About.

Academic Honors: Superior performance in your classes will bring academic honors. If, at the end of a semester, your grade point average is 3.5 (equal to B+/A-) with no grade lower than a B, a minimum 12 hours completed, and no incompletes, you will be placed on the President's Honor Roll. If your grade point average is as high as 3.00 (a B average), with no grade lower than a C, a minimum of 12 hours completed, and no incompletes, you will be placed on the Dean's Honor Roll.

Each year the student graduating with the highest grade point average after four semesters is named the Valedictorian. The student with the second highest grade point average for four semesters is the Salutatorian. These are Haskell's highest academic honors.

Other awards are given for outstanding accomplishment in a variety of subject areas.

Credit and Grading System. The academic year at Haskell is divided into two semesters of about eighteen weeks each and a summer session of six or eight weeks. Students take 16 or 18 credits (also called credit hours or hours) each semester, with a minimum of 12 for regular students. To graduate with a two-year degree you need 60 or 64 credits, which takes four semesters if you don't go to summer school.

In addition to needing 64 credits you also need 128 grade points to graduate. The number of grade points you receive for each course depends on your grade in the course. With an A, you get four grade points per credit, with a B you get three grade points per credit, with a C two, with a D one, and with an F no grade points per credit. So if you are taking a three-credit course and you get an A in that course, you also receive 12 grade points (four grade points times three credits). Obviously, to receive your 128 grade points by the end of four semesters you will need to average two grade points per credit, or a C average.



Each course that you will take at Haskell is assigned a certain number of credits. Usually that will be the same number of hours of classroom time per week that the class meets. If a course is worth three credits, that probably means it meets three times a week. Some courses are different though. Labs, physical education courses, and vocational shop work yield one credit per ninety minutes of class time. And a few other courses, like Beginning Composition, meet five days a week but only for three hours credit. (Don't feel cheated if you're in a course like that; your time spent working in class will be offset by your having less homework to do out of class).

Grades are interpreted to mean the following:

- | | |
|---|---|
| A - Superior | F - Failure |
| B - Good, above average | W - Withdrawal without penalty |
| C - Average | I - Incomplete, to become an F if not completed by the end of the first nine weeks of the following semester. |
| D - Low, below average, barely passing. | |

Experience indicates that students have a hard time making up incompletes; avoid them!

Grade reports are sent to the advisor at the end of five weeks and again at the end of nine weeks (midsemester). These are unofficial, but will be useful to you, your teachers and your advisor in evaluating your progress and locating your academic strengths and weaknesses. Official grade reports will be sent out at the end of each semester to your parents, your advisor and your field agency. (You may request the School Office to send a copy of your grades directly to you, if you wish). These grades become part of your permanent academic record.

Academic Procedures

It is important to understand the academic procedures of the college in order that you can maintain your position as a student in good standing, and that you may know what options are open to you in terms of withdrawing, transferring, etc. If some of the procedures below are confusing to you, there are many people around who can help you out, e.g., your advisor, teachers and the School Office staff (Sequoyah Hall).

Registration. At registration, you will meet with your advisor, select your courses, and accomplish a few other routine matters (e.g., receive your Haskell I.D. Card).

Registration Changes. You will have up to two weeks to change courses. If you want to change courses, see your advisor first. He and your Dean must approve the change, and you will then complete the procedure at the School Office.

Late Registration. It is extremely important that you arrive on campus in time to go through the regular enrollment. Otherwise, the course that you want to take probably will be full and you will start off the semester behind the other students (you will be held responsible for any work you have missed). If for some reason you do arrive late, go immediately to the School Office to enroll.

Special Student. Any student desiring Haskell enrollment in some capacity other than a full-time resident will be classified as a "Special Student." Before a special student can become eligible for a degree, diploma, or certificate from Haskell, he must meet our requirements of high school completion or equivalency, and residency.

Credit by Examination. If you feel you have enough knowledge in the area of a given course to pass an examination, or examinations, on the content of that course without enrolling in it beforehand, you may "challenge" the course. This simply means that you petition the Dean and the head of the department in which the course is listed, and if your petition is accepted you can take the examinations. If you pass, you will receive the credit for the course. Up to ten credits may be challenged in this manner.

Repeating a Course. If you receive a failing grade in a required course, normally you will be expected to re-take it, unless an equivalent substitute course can be agreed upon by you, your advisor, and your Dean. If you wish to repeat a course in which you received a D, obtain the approval of your advisor and Dean. If a course is repeated, the last grade obtained will be the one recorded on your transcript.

Withdrawals. It is very important that you go through official withdrawal procedures if you withdraw before the end of a semester. Otherwise you may receive all F's for the courses you are taking at the time. You will need to see a number of different staff members before withdrawal is complete. Start at the School Office.

Grading Options at Withdrawal. W (withdrawn with no penalty), and F (course failure) are the only marks used when a student withdraws from school. Through the fifth week of a semester, a W is automatic if the student initiates the withdrawal. From the sixth through the twelfth week, the instructor has the option of giving either a W or an F when the student requests withdrawal. After the twelfth week, an F is automatic even when the student initiates withdrawal, unless special consideration from the Instructional Dean is granted. If the instructor initiates the drop at any time, say for poor attendance, the grade is F.

In-Good-Standing. In order to remain academically in-good-standing, you must meet the following gpa (grade point average) requirements. Notice that the requirements get stiffer the longer you are here:

<u>Semester</u>	<u>Semester GPA</u>	<u>Minimum Class Load</u>
First	1.50	12 semester hours
Second	1.66	12 semester hours
Third	1.83	12 semester hours
Fourth	2.00	12 semester hours

Remember, a 2.00 cumulative-gpa is required for graduation in any degree program.

Academic Probation. Academic probation is automatic when students fail to meet the above minimum standards. That means receiving grades below the required levels or failing to complete 12 hours. If you fall below 12 semester hours an exception can be made upon the recommendation of your Dean. (Special or non-resident students may take less than 12 hours without penalty. Only a very few students are in these categories).

If you transfer to another college while on academic probation or academic suspension (see below) at Haskell, you will probably be on academic probation there for the first semester. If you transfer to Haskell from another college where you were on academic probation or suspension, you will be on academic probation during your first semester here.

Academic Suspension. Two consecutive semesters on academic probation automatically bring academic suspension. This means you will not be allowed to return to Haskell for the following semester (although you may re-apply after waiting out a semester). If your class falls below 12 hours, your Dean will make a recommendation as to whether you should be suspended or not. If suspension is recommended and you do not agree with that decision, you may appeal it to the Committee on Admissions and Retentions for a hearing. At the hearing you will be entitled to have a counselor or instructor with you, or anyone else who could lend support. If you disagree with that committee's decision, you may appeal to the President of the College.

Transferring. Most four-year institutions prefer that students complete the Associate Degree requirements before transferring, and that students desiring to transfer have at least a C average (2.00 gpa). Entrance requirements vary widely at four-year colleges and universities, and each institution exercises the option of accepting transfer credits for advanced standing or not.

You are strongly urged to consult the catalogues of the senior colleges that interest you early in your stay at Haskell. Catalogues and addresses of schools are in the Counseling Center (East Wing of Minoka Hall); help is available there or from your advisor. Normally, you would begin making application to transfer during your third semester at Haskell, and you would have transcripts sent to the colleges where you are applying at the end of the third semester here. (Make requests at the School Office for transcripts to be sent).

Readmission and Reinstatement. Any former student wishing to return to Haskell should file a new application if he has been gone from Haskell longer than one year; or he should write a letter requesting readmission to the Director of Admissions and Records at Haskell stating his educational plans if he has been gone less than one year. The student's application or letter will be evaluated by the Admissions and Retentions Committee; readmission is not automatic.

Any student suspended from Haskell for academic or social reasons must remain in non-attendance for at least one semester. Then he must write a letter (see above) which will be evaluated by the Committee on Admissions and Retentions. Notice of the committee's decision will be mailed to the student's home address.. (If a student enrolls in another school during his period of suspension from this school, he will be expected to achieve at least a C average at the other school).

Acceptance of Credit from other Colleges. If you have attended another college or university before applying to Haskell, you will be expected to forward official transcripts of credits earned at that institution to the Haskell Office of Admissions and Records. To be accepted in an academic program at Haskell, course work completed at another college must be a C or higher for required courses, and a D or higher for electives. Students on academic probation from other institutions will enter Haskell on academic probation. Students suspended from other schools must stay out at least one semester before becoming eligible for Haskell enrollment.



HASKELL LIBRARY

The specialized library at Haskell, located in the north wing of Sequoyah, was first opened in March 1962. It is attractive, comfortable and tastefully equipped. Here, in an atmosphere suitable for research, study and leisure reading, students take part in one of the most widely-used facets of the school program. Not only do instructors involve the students in assignments which require the use of the library materials in specific subject fields, the students find materials which contribute to their own personal growth and development.

There are approximately 16,000 volumes housed in the library, representing collections of trade-technical materials, educational materials, science, applied sciences, fiction, history and travel, and the humanities. Haskell's Indian collection of 2500 volumes is a popular corner of the library.

THE BUREAU OF AMERICAN ETHNOLOGY'S annual reports and bulletins are widely used for research by students doing reports on specific tribes, and reading the forty-four hometown newspapers from fifteen states and the Indian school papers and tribal agency publications is a popular pastime for many students. The 207 different magazine subscriptions represent popular and technical fields, as well as specific Indian publications.

The emphasis placed on library service at Haskell is evidenced by the following recent acquisitions: two new microfilm readers, 1221 rolls of microfilm, 2654 books, and 725 bound volumes of periodicals.

The library's hours of service are from 8:00 a.m. until 9:30 p.m. each week day, and from 1:00 to 5:00 p.m. on Sunday. The telephone extension number is 38.



LIVING AT HASKELL



CAMPUS HOUSING

The Director of Student Housing has responsibility for campus student residential programs. Problems or questions pertaining to student residential programs should be directed to this office, located in the student union.

Residence halls on campus are provided for single students. Housing for married students is not available on campus. Students needing off campus housing may contact the office of Financial Aid for assistance in determining their financial needs. Students that make arrangements to live off campus in privately owned facilities will normally not be eligible to live in campus residential facilities until the following semester.

We strongly recommend that all first year unmarried students live in campus residential housing. Students must be married and/or 23 years of age in order to receive government assistance for off campus housing.

There are six residence halls on the campus for single students or married students without spouses or families. Women's residence halls are Winona and Pocahontas; men's residence halls are Osceola-Keokuk, Tinker, and Powhatan. Minoka hall is for both men and women who are experiencing living difficulties. The rooms house four students each. Rooms are completely furnished including blankets, pillows, linens, towels, and bed spreads. However, the rooms are not air-conditioned.

Some students bring personal items such as blankets, cushions, and small rugs for decorations of their room. You may wish to bring a radio, tape or record player to use in your room. An alarm clock is necessary to help you meet your class schedules. You may wish to bring a fan for the warm days. A \$2.00 deposit is required for a key to your room in the residence hall. The school is not responsible for loss, theft or damage to the personal property of residents.

Safety factors prevent the use of irons, coffee pots, popcorn poppers, and electric skillets and similar appliances in the student rooms. However, these items are available elsewhere in the dormitory.

The residents of each room are responsible for keeping it clean, neat, and sanitary. Regular room inspections are scheduled. Laundry rooms, kitchenette, social and recreational areas are located on each floor for your use and enjoyment. Washers and dryers are furnished for your

use. You are expected to furnish your own soap, irons and bleach for your personal laundry.

Since drugs and alcoholic beverages are not allowed on the campus, they are not permitted in the residence halls.

The PHS School Health Center, staffed with a physician, dentists, nurses, and administrative personnel, cares for the health of all students and their dependents. If you need glasses or hearing devices to participate as a student, you should complete your needs before coming to Haskell. Illnesses are given prompt and professional attention. If needed, the services of other physicians and facilities in Lawrence, Topeka, and Kansas City are available.

Mail is delivered each day to your post office box in the northwest corner of the Student Union Monday through Friday. There is no mail delivery on Saturday, Sunday and holidays.

You are required to have permission in writing from parents or guardian on file in the residence hall office before overnight or weekend leave from the campus will be granted. You will be expected to follow the policies and regulations of the school concerning closing hours. You will have an opportunity to participate in the government of the Residence Hall Council. Residence hall life is governed by rules and procedures which are either developed by the residents year by year or which have been established by the college for the security and welfare of all students.

A large supply of clothing is not necessary for college life at Haskell. Generally speaking, the same type of clothing you have been wearing to school is also appropriate at Haskell. A winter coat and rain apparel are necessary items.

Guests or visitors of the opposite sex are permitted in lounge areas and recreation areas during the hours prescribed by the Residence Hall Council. Prior arrangements for accommodations for off-campus visitors should be made with the Director of Student Housing.

Students will be held responsible for any property damaged in the residence halls.

The Student Services staff is looking forward to meeting you and will assist you in any way possible to make your experiences at Haskell more beneficial and enjoyable ones.

State laws prohibit students from keeping pets in residence halls.

Haskell Indian Junior College or staff members in residence halls will not be responsible for any personal items damaged, lost or stolen, such as clothing, radios, record players, tape recorders, etc.

A safe is provided in each residence hall for student money for safe keeping overnight or weekends. Students are encouraged to deposit student money in the student bank at Sequoyah Hall.

Pay phones are provided for personal calls. They are located in each dormitory and in the lobby of the Student Union. Office phones are provided for school, business, and official calls.



**DORMITORY AND SCHOOL MAILING ADDRESS
AND TELEPHONE NUMBERS**

DORMITORIES:

PAY PHONE

OFFICE PHONE

OSCEOLA-KEOKUK HALL

Haskell Indian Junior College
Lawrence, Kansas 66044

913-843-9820

or

913-843-9735

913-841-2535

TINKER HALL

Haskell Indian Junior College
Lawrence, Kansas 66044

913-842-9415

913-841-2616

POWHATAN HALL

Haskell Indian Junior College
Lawrence, Kansas 66044

913-843-9810

913-841-2626

WINONA HALL

Haskell Indian Junior College
Lawrence, Kansas 66044

913-843-9697

or

913-842-9517

913-841-2422

POCAHONTAS HALL

Haskell Indian Junior College
Lawrence, Kansas 66044

913-843-9723

913-841-2442

MINOKA HALL

Haskell Indian Junior College
Lawrence, Kansas 66044

913-842-9403

913-841-2505

EXAMPLE:

Student Name

Dormitory Name

Haskell Indian Junior College
Lawrence, Kansas 66044

Suggested Annual Single Student Budget Living in Dorm

MEN

Clothing		
Jeans (4 pr.)	40.00	
Shirts (Dress/Sport) (4)	20.00	
T-Shirts (Dress) (4)	12.00	
Jacket (1)	15.00	
Coat, Winter (1)	40.00	
Sportcoat (1)	40.00	
Trousers (Dress Slacks 3)	45.00	
Ties (2)	5.00	
Shoes (Dress 2 pr.)	40.00	
(Gym 1 pr.)	12.00	
Socks (10 pr.)	15.00	
Underwear (6 sets)	16.00	
Subtotal	300.00	300.00

Laundry/Dry Cleaning		
Soap 1.50 @ month	20.00	
Iron	15.00	
Dry Cleaning	20.00	
Subtotal	55.00	55.00

Personal Needs		
Hair Cuts 2.50 @ mo.	25.00	
Soap, Powder, Lotion, and Blades	15.00	
Toothpaste, brushes, mouthwash	5.00	
Miscellaneous	5.00	
Subtotal	50.00	50.00

Recreation		
Activity ticket, movies, dances, clubs, church organizations, CAE	270.00	
Subtotal	270.00	270.00

Miscellaneous (not covering or in addition to)	45.00	
Transportation		
2 Round trip bus fares -----	-----	
TOTAL NEEDS PLUS TRANSPORTATION	720.00	

WOMEN

Clothing		
Slacks/Jeanas (4 pr.)	40.00	
Blouses (4)	20.00	
Slips (4)	12.00	
Jacket (1)	15.00	
Coat, Winter (1)	40.00	
Sweaters (4)	24.00	
Social Dress (1)	16.00	
School Dress (4)	45.00	
Shoes (Dress 4 pr.)	48.00	
(Gym 1 pr.)	4.00	
Hose (6 pr.)	15.00	
Lingerie	21.00	
Subtotal	300.00	300.00

Laundry/Dry Cleaning		
Soap 1.50 @ month	20.00	
Iron	15.00	
Dry Cleaning	20.00	
Subtotal	55.00	55.00

Personal Needs		
Hair Needs & Dryer	60.00	
Soap, Powder, Lotion, and Blades	15.00	
Toothpaste, brushes, mouthwash, etc.	5.00	
Miscellaneous	10.00	
Subtotal	95.00	95.00

Recreation		
Activity ticket, movies, dances, clubs, church organizations, CAB	225.00	
Subtotal	225.00	225.00

Miscellaneous (Not covering or in addition to)	45.00	
Transportation		
2 Round trip bus fares -----	-----	
TOTAL NEEDS PLUS TRANSPORTATION	720.00	

STUDENT BUDGET
MONTHLY AND ANNUAL
HASKELL INDIAN JUNIOR COLLEGE

	ON CAMPUS			OFF CAMPUS						
	Single Student		Student And Wife	Student & Two Dependents	Student & Three Depend.	Student & Four Depend.	Student & Five Depend.	Student & Six Depend.		
	Male	Female								
NEEDS:										
Regular Expenses										
Rent	N	N	110	120	130	130	130	150	150	
Utilities	N	N	25	30	40	40	40	40	40	
Food	N	N	60	100	120	130	140	150	160	
Clothing	34	34	10	20	25	30	35	40	45	
Laundry/Dry Cleaning	6	6	8	10	20	20	20	20	20	
Personal Needs	6	11	5	10	15	15	20	25	25	
Recreation	20	15	10	20	25	25	25	30	30	
Commuting (In City)	6	6	30	30	30	30	30	30	30	
Organizations/Church	3	3	5	5	5	5	5	5	5	
Sub-Total 1 Month's Expenses	75	75	263	345	410	425	445	490	505	
Irregular Expenses										
Life Insurance Premium	N	N	N	25	25	25	25	25	25	
Automobile Insurance	N	N	50	50	50	50	50	50	50	
Utility Deposit	N	N	90	90	90	90	90	90	90	
Transportation (2 Round Trips - Bus)										
Miscellaneous	45	45	100	150	200	200	200	200	200	
Sub-Total Irregular Expenses	45+	45+	240	315	365	365	365	365	365	
Total Regular/Irregular Expenses	720+	720+	2607	3420	4055	4190	4370	4775	4910	
INCOME:										
Employment Assistance										
One Month			184	248	301	321	358	385	401	
Nine Months			1730	2517	3041	3258	3623	3897	4078	
BIA Higher Education Grant										
One Month			191	391	446	446	446	446	446	
Nine Months			1717	3516	4016	4016	4016	4016	4016	
Tribal Grant										
EOG										
College Work Study										
Veteran's Benefits (Monthly)										
Social Security (Monthly)										
Other										

OFF CAMPUS HOUSING

Housing for married students is not available on the campus. Students must be married and/or 23 years of age or have special permission from the Dean of Students in order to live off campus. Students needing off campus housing should contact the Financial Aids Office. The initial cost of moving into an apartment runs anywhere from \$200 to \$220; this amount includes the first month's rent, damage deposit, and utility deposits. We urge those students who are planning to live off campus to have enough money to cover the first month's rent, deposits, food and transportation because the higher education grants, employment assistance checks, and veteran's assistance are not always available when the students arrive.

Haskell provides bus service in the mornings and evenings for students who live in the area of the Redbud Lane apartment complexes. You can also make arrangements for transportation with other students living near you who own their own automobiles. There are shopping centers near most of the apartment complexes.

The PHS School Health Center, staffed with a physician, dentists, nurses, and administrative personnel, cares for the health of all students and their dependents. If you need glasses or hearing devices to participate as a student, you should complete your needs before coming to Haskell. For further information see section on Health Services. Illnesses are given prompt and professional attention. If needed, the services of other physicians and facilities in Lawrence, Topeka, and Kansas City are available.

Much effort has been put into trying to develop a Day Care Center at Haskell. A place, called the Little Indian Center, has been remodeled and many students, staff, and Haskell friends have helped get it started. There is a paid staff caring for the children and it seems to work out very well for the students who have children of a small age. However, the funding for the Day Care Center is on a yearly basis and we do not know from year to year if the funds will be available for operation. If you have children and are considering these services, you should check immediately upon your arrival on the campus.

RENTAL HOUSING

YOUR RIGHTS AND RESPONSIBILITIES

Federal law, Kansas statutes, and Lawrence city ordinances prohibit discrimination based on race, religion, color, or national origin in the sale or rental housing. The vast majority of apartments in the Lawrence area are covered by these laws. Haskell students should have no problems renting apartments anywhere in town in accordance with your financial status. If problems do arise, SEEK LEGAL ASSISTANCE.

Before renting a place, however, you should know some things for your own safety and comfort. This checklist is based on some important points of the Lawrence Housing Code. Be sure you ask the landlord about each of these points as well as any other questions you might have, before you rent.

General Terms.

1. How long is the rental period?
2. How much rent will you pay? When? To whom?
3. What notice must you give to move out?
4. What notice must the landlord give you before he asks you to leave?
5. Is there a security deposit? How much? How do you get it back? He should keep it only if you damage the apartment or if you break your agreement, such as leaving without giving notice.
6. If it is a furnished apartment, get a complete list of what will be included in the furnishings.

Gas, Water, and Electricity.

7. Are these utilities included in the rental price?
8. If the utilities are extra, ask to see the bills each month. The average cost of heat and water in a two bedroom apartment runs from \$12 to \$20 per month in the cooler seasons; air conditioning makes the bill run higher.

Condition of the Building.

9. Does the building need painting? Is the yard clean? Is the yard work left up to you or does the landlord take care of it?

Answering these questions will not only help you choose a good apartment, but will also give you a clue as to the type of landlord you might expect. If the building is a mess on the outside, don't expect repairs on the inside to be made when you need them.

Check the inside of the apartment for cracks, water stains, falling plaster. If these are minor and don't bother you, bring them to the attention of the landlord anyway so that you will not be blamed for any damage when you move out. IF SOMETHING BREAKS OR GOES WRONG AFTER YOU MOVE IN, NOTIFY THE LANDLORD IMMEDIATELY. There are special rules for basement apartments. If you are thinking about renting a basement, SEEK LEGAL ASSISTANCE.

Heating.

10. Is the apartment adequately heated? Check the number of vents, especially in the bedroom and bath.
11. Is it gas or electric heat and who pays the bills on it?
12. Can you control the temperature?
13. Who pays the service bills if anything goes wrong?

Open face gas heaters without vents are illegal. They can cause fires and if the pilot light goes out, the leaking gas is deadly.

Plumbing.

14. Check the water pressure. If the building is old, turn on several faucets to see if the pressure is strong and if there is plenty of hot water, especially in the bath.
15. Are the shower, bathtub, and sinks in good condition?
16. Who pays the bill if the sink clogs up?

Electricity.

Check for bare wires and the number of outlets. There should be at least two working outlets in each room.

17. Is the fuse box old and rusted?
18. Who pays the bill if anything goes wrong?

Fire Safety.

There are many rules which the landlord must follow concerning fire safety. Check the escape routes.

19. Is there a fire extinguisher? If it doesn't look safe to you, SEEK LEGAL ASSISTANCE.

Trash And Garbage.

20. Is there a garbage disposal? If so, check to see if it works because you will be paying for it in your rent.
21. Is there a trash can for your apartment? There must be one.
22. When does the trashman come to this address? Where do you have to put the trash for pick up?

Know the answers to all these questions before renting any apartment. These are only some of the questions you should ask. Ask anything else you can think of. It can help avoid trouble with your landlord later.

Once you find an apartment, you must still be familiar with your rights and responsibilities, but it may help you realize some of the problems involved.

Leases.

Usually, it is better for you to sign a lease. Once you sign a lease, the landlord cannot threaten to throw you out at the end of each month. However, if you don't plan to stay for the entire lease period, **DON'T SIGN A LEASE. IF YOU DO, YOU MAY HAVE TO PAY THE ENTIRE AMOUNT OF THE RENT.** But, whatever you do, don't sign anything and don't make any oral agreements with the landlord unless you are sure of all the legal results. If you are not sure, **SEEK LEGAL ASSISTANCE.**

Termination.

Your landlord may legally cancel your lease for several reasons. These include:

1. Failure to pay your rent on the agreed date.
2. Waste. (A legal term meaning damage to the apartment, more than normal wear and tear.)
3. If you lease your apartment to someone else without permission.
4. Maintaining a nuisance. (A legal term meaning anything from not keeping the apartment clean--to playing your record player too loud.)

Notice.

If you want to move out, you must give the landlord written notice. Usually you must tell the landlord 30 days before you move, but this depends on whether you have a lease and what it says. Also, the law requires the landlord to give you notice before he can make you move; no matter what his reasons. So, before you leave, or he tries to force you to move out, there must be some notice given. If you're not sure how much, **SEEK LEGAL ASSISTANCE.**

Repairs.

Some tenants think that if the landlord does not make an emergency repair like fixing a clogged sink - the tenant may call a repairman himself. Then the tenant believes he can subtract the amount of the repair bill from his rent. This is not the law in Kansas. The tenant must still pay all of his rent.

These are only a very few of the legal problems that may come up in renting an apartment. If you have any questions about the legal consequences of renting an apartment, before you do anything, SEEK LEGAL ASSISTANCE.

The Legal Assistant Office is located in the Student Union building. Any of the law students will be happy to help you in any problems or questions you may have.

CHILD CARE CENTER

The Little Indian Center is a non-profit day care center located on the Haskell Campus. It serves primarily the student families, taking in order of priority, children whose parent(s) are students, children of one student and one working parent (especially if the student is the mother) children of Haskell Staff and other Indian and Non-Indian children from the community.

Funding for the Day Care Center is on a yearly basis and we do not know from year to year if the funds will be available for operation. If you have children and are considering these services, be sure to write to the center prior to your arrival on the campus or check immediately upon your arrival, to see if the center is going to be in operation. REMEMBER This is a service which is not available each year so be sure to check ahead of time.

There are no Haskell funds devoted directly to providing the service which is sponsored by the Indian Center of Lawrence, Inc. It is necessary for students to be able to pay for their child's care. One way is to include an appropriate amount in your grant request. The rate used by the Kansas Department of Social Welfare is \$5.00 per day, as of January 1973. This amount will not completely cover the cost which is estimated at \$8.00 per day. If you plan to use this service, it is very important that you make the request for child care on your grant so that the funds will be available when school opens. To calculate the amount you need for child care, multiply the number of days in each semester you will be in school times the \$5.00 per day per child, include registration days and examination days. This amount is to be deposited for payment on your behalf to the Little Indian Center.

The Little Indian Center is a regular attendance center, not a drop-in center. Children must be enrolled and have health examinations before attending. However, emergency care can be provided if the situation warrants. Forms for enrolling a child will be available at registration or will be mailed to you at your request. As the enrollment is limited to 18 infants, 7 toddlers and 10 pre-schoolers, it is wise to apply early. We will try to place children who cannot be enrolled because of space or priority limitations in homes for family day care. Send requests for application forms to Little Indian Center, Box 402, Haskell Indian Junior College, Lawrence, Kansas 66044. Complete and return to the same address.

Students who plan to use this service need to do two things:

1. Write to the Little Indian Center, Box 402, Haskell Indian Junior College, Lawrence, Kansas 66044 and request the application forms. Fill these out and return at once to the same address.

2. Request an amount on your grant for child care. To calculate the amount, multiply the number of days, including registration and examination days for each semester you will be in school, by \$5.00 per day per child. This amount should be deposited for payment to the Little Indian Center for the care of your child(ren).

If some regulations covering a particular grant do not permit \$5.00 per day for child care, use the maximum and give us a copy of the regulations so that we may try to get the regulations changed. Some child care costs have been based on custodial care, have not increased with inflation, and do not take into account the need for 1 to 3 staff to child ratio in infant care.

It may be noted that the Little Indian Center is staffed by students and wives of students. Persons interested in applying for employment should write at once to the Little Indian Center, stating experience and training that would qualify them to work with children or serve as custodian. Every employee must have a recent health examination. Work Study students may ask to be placed with the Little Indian Center.



STUDENT DINING FACILITY

This year, as every year, the Food Service Department tries to improve the menu, and to initiate new programs. One new program will be to utilize Work Study students in the serving lines, and to use, in part, the "self service system". Also, this year, the menu is to be arranged so that on several occasions throughout the week the student may choose his or her own main courses or vegetables, and desserts. New lists of food items will be served, and as the need requires, the dining hall will provide lunches for special trips the students may take. And, at the end of every year the Food Services Department sponsors the traditional Spring Barbeque for everyone's enjoyment.

Another important change is the new meal ticket system. These will be issued to students during or immediately following registration. Guest tickets are required for persons other than students and are available from the Administration Office, the Dean of Students' Office, and on week-ends from the dormitory office. As is customary, the dining hall provides a reasonable length of time for students to be served. Those hours are:

BREAKFAST	6:30 a.m. to 7:10 a.m.
LUNCH	11:15 a.m. to 12:15 p.m.
DINNER	5:30 p.m. to 6:30 p.m.



STUDENT LIFE AT HASKELL



STUDENT ACTIVITIES

Student Activities at Haskell are provided, maintained, and directed by the Recreation Department, a division of the Student Services Department. Many people are involved in the overall program of student activities. Some of the key people are the Recreation Department Personnel, Student Senate, Campus Activities Board, the Residential Hall Council, Residential Personnel, and various clubs on the campus.

The aim of the recreation department is to provide large and small group activities that are of major interest to our students. However, we must know what those interests are so plan now to make your voice heard. The activities fall in the categories of on-campus and off-campus. Following are some examples:

1. On-campus: Dances, movies, intramurals, parties, Coffee-house acts, parlor games, concerts, dramatic presentations, etc.
2. Off-campus: Skating, bowling, theatre trips, shopping trips, sightseeing trips, educational trips, athletic trips, camp-outs.

There are many clubs and organizations on the campus that students can join if they so desire. A few of them are as follows:

Indian Club	Cheerleaders
H-Club	Haskell Yearbook Staff
Phi Beta Lambda	Indian Leader Staff
Circle-K Club	Spanish Club
Rodeo Club	Beautifiers Club
Future Medical Careers	Jewelry Club
Dental Assistants Society	Campus Activity Board

These are some of the clubs, organizations and activities in which a student may become involved. The amount of extra-curricular activities should be limited by the student's preference and class-hour load. However, an involved and well-rounded student is a healthy student,

HASKELL INDIAN JUNIOR COLLEGE STUDENT SENATE

Each student by nature of his enrollment is automatically a member of the Associated Students of Haskell Indian Junior College. The Associated Students have created the Student Senate for the following purposes:

1. To provide for an effective representation of student interests.
2. To insure that students have a major voice in governing those affairs which directly and primarily affect the students of the college.
3. To guarantee the rights of students.

The Senate membership is made up of the following persons:

1. The President of the Associated Students
2. The Vice-President of the Associated Students
3. Eight (8) representatives from the Freshman class
4. Eight (8) representatives from the Sophomore class
5. One (1) representative from each residential hall
6. One (1) faculty advisor from each of the major divisions of the college.

A general election of Student Senate officers and members will be held on the first Tuesday in October. Anyone interested in serving on the Senate should contact the Director of Student Activities, whose office is located in the Student Union.

CAMPUS ACTIVITY BOARD

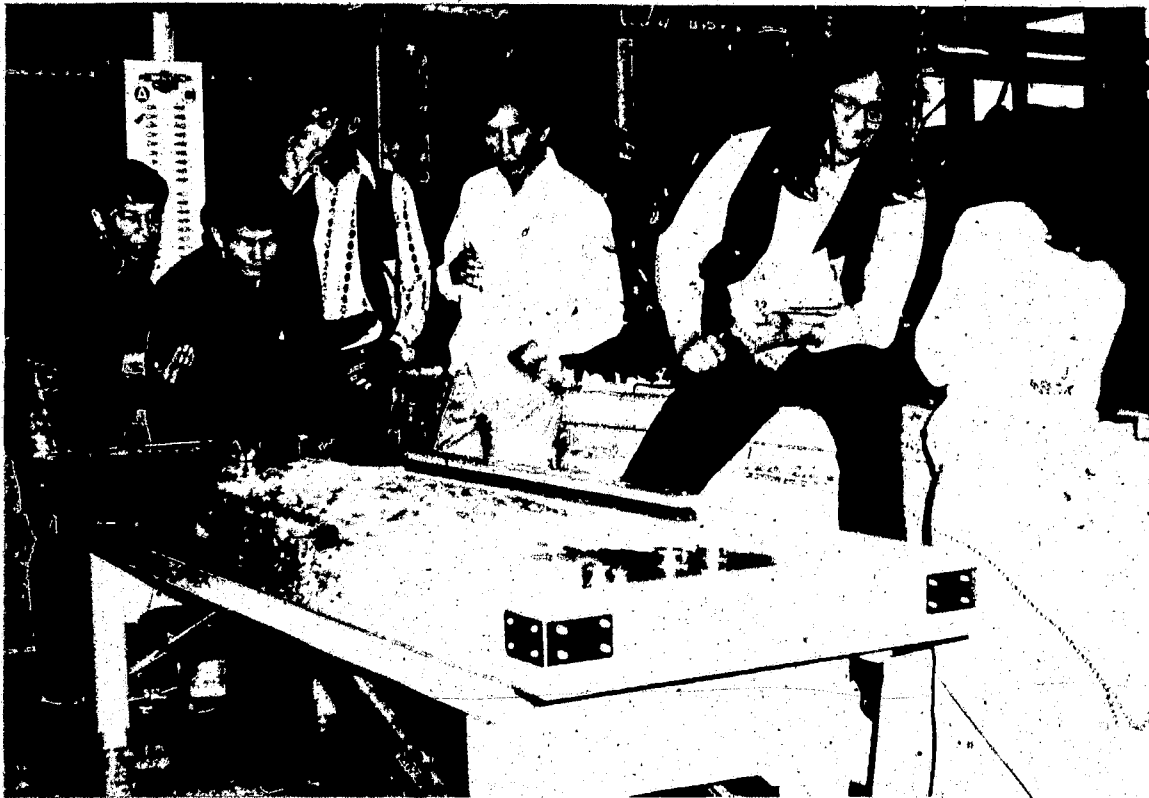
Representation on CAB is elected from student organizations and volunteered by active, concerned, and dedicated students. If you are interested in serving on CAB you should make application at the Recreation Office and you will be notified of your interview. This organization begins functioning the very first week of school to plan the activities for the coming year, so if you are interested don't delay.

Realizing that: (1) The Union is the community center of the college for all students, faculty, administration, staff, alumni, and guests; (2) It is not just a building; it is an organization and a program; and (3) The Union is part of the educational program of the college aiming to make free time a cooperative factor with study in education, the Campus Activity Board shall strive to meet the needs of the various

groups it serves, and to provide services and programs for and with these groups.

The specific purposes of Campus Activity Board shall be:

1. To provide educational experiences in the raising of and the expenditure of funds for various activities in Stidham Union which are not provided by the government.
2. To plan, organize, coordinate, and implement, through its various committees, boards, and staff a cultural, social, and recreational program of various activities on or connected with the college campus.
3. To provide such services and activities at a minimum cost to the students.
4. To serve as a laboratory of training students in social responsibility and for leadership in their future endeavors.
5. To encourage self-directed activity, giving maximum opportunity for self-realization and for growth in individual social competency and group effectiveness.



An extensive intramural program is maintained by the Recreation Department and is sponsored by the Campus Activity Board. Interested students serve as officials on a volunteer basis and are paid a nominal fee for their time and effort.

The program includes student participation in flag football, basketball, volleyball, softball, pool, a bowling league (50¢ per night). At various times throughout the year special events are scheduled such as the Christmas basketball tournament; a punt, pass, and kick event for the girls, etc. You may wish to bring your personal equipment for some of these activities such as tennis rackets, gloves, shoes, pool cue, etc.

Married students and students who live off campus are encouraged to form teams and participate in the various leagues and tournaments, and many do so. There are many couples who bowl in the Thursday night bowling league.



SCHOOL NEWSPAPER

The Haskell newspaper, "The Indian Leader," is a semi-monthly publication issued on the second and fourth Fridays of the month during the school year. One of the first school newspapers in the nation, The Indian Leader was started in 1897. Written and published by students in the Language Arts Department and the Haskell Press, this newspaper brings current information about students, staff, alumni, clubs, special events, and classwork at Haskell.

With a circulation of approximately 3500, this paper is distributed free to students, their parents, staff, Indian agencies and schools, government officials, graduates of the preceding year and servicemen who send their names and addresses.

Subscription price ~~is~~ \$1.00 per year for others.

SCHOOL YEARBOOK

The Haskell yearbook, with the same name as the newspaper, is distributed free at the end of the school year to persons receiving the newspaper.

"The Indian Leader" yearbook is largely a picture book containing the story of the school year, written and published by students in the Language Arts Department and the Haskell Press.

HASKELL INDIAN JUNIOR COLLEGE BOOKSTORE

Haskell's Bookstore is another part of the Stidham Union Services to the Campus Community. Besides the selection of paper back books and magazines, the Bookstore also carries health and beauty aids, sports-wear, paper goods, and a large selection of arts and crafts items made on our campus by students and staff.

Located in the Stidham Union just off the main lobby, the Bookstore is open Monday thru Friday and half a day Saturday.

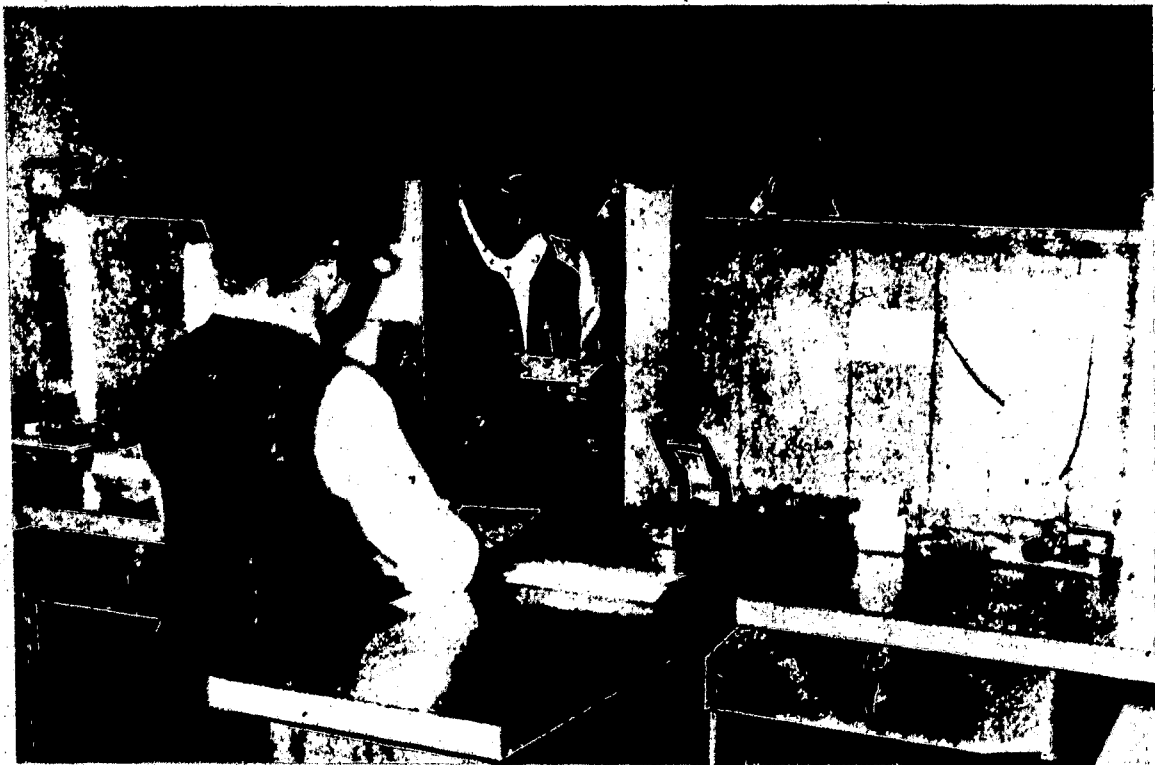
STUDENT BANK

The Student Bank provides banking services and conveniences for all Haskell students and student organizations. Each student is strongly encouraged to deposit his money in the Student Bank and withdraw it as needed. Each depositor will be issued a checkbook and should use his own checkbook at all times. Checks written or drawn on the Haskell Indian Junior College Bank may be cashed only at the Student Bank. Deposits and withdrawals can be made during banking hours on any school day.

Students under supervision of a bonded Bank Teller serve as tellers, bookkeepers, and accounting machine operators. The bank functions as nearly as possible like a commercial bank and serves as a training laboratory for developing good banking procedures.

Bank Drafts, Cashier's Checks, U. S. Treasury Checks, and Money Orders may be cashed at the Student Bank. Personal checks may not be cashed. However, they may be deposited and held 20 days for clearance.

The Student Bank is located in the North Wing of Sequoyah Hall. It is open Monday thru Friday, 1:00 P.M. to 4:00 P.M.



HASKELL INDIAN CLUB

The Haskell Indian Club is one of the largest organizations on the campus. It contributes a great deal to the school, and promotes good public relations in the city of Lawrence and neighboring communities.

The Indian Club is in great demand and makes several trips to cities in Missouri and Eastern Kansas to perform for various organizations and schools.

The main purpose of the club is, however, to maintain tribal tradition, customs, dances, and to exchange the cultural traditions of other tribes. The membership has been approximately 40 or more this school year and is open to all students on campus. The club meets twice a month and dances to prepare for performances.

At different times throughout the year the Indian Club co-sponsors events with the Lawrence Indian Club. One such event is the annual Haskell Indian Junior College Pow-Wow held the same week-end as the Haskell Rodeo.

If you are interested in your tribal dances and customs, bring your Indian costume to help promote a better Indian Club for the coming school year.



RELIGIOUS AFFAIRS

Various religious affiliations are available to students at Haskell Indian Junior College through the Ministerial Alliance in Lawrence. The various denominations represented in Lawrence is as follows: Assembly, Assembly of God, Baptist, Catholic, Christian-Disciples, Christian-Independent, Christian Science, Church of Christ, Church of God, Congregational, Episcopal, Friends, Jewish, Lutheran, Methodist, Nazarene, Pentecostal, Wesleyan Church, Presbyterian, LDS, RLDS, Salvation Army, and Unitarian.

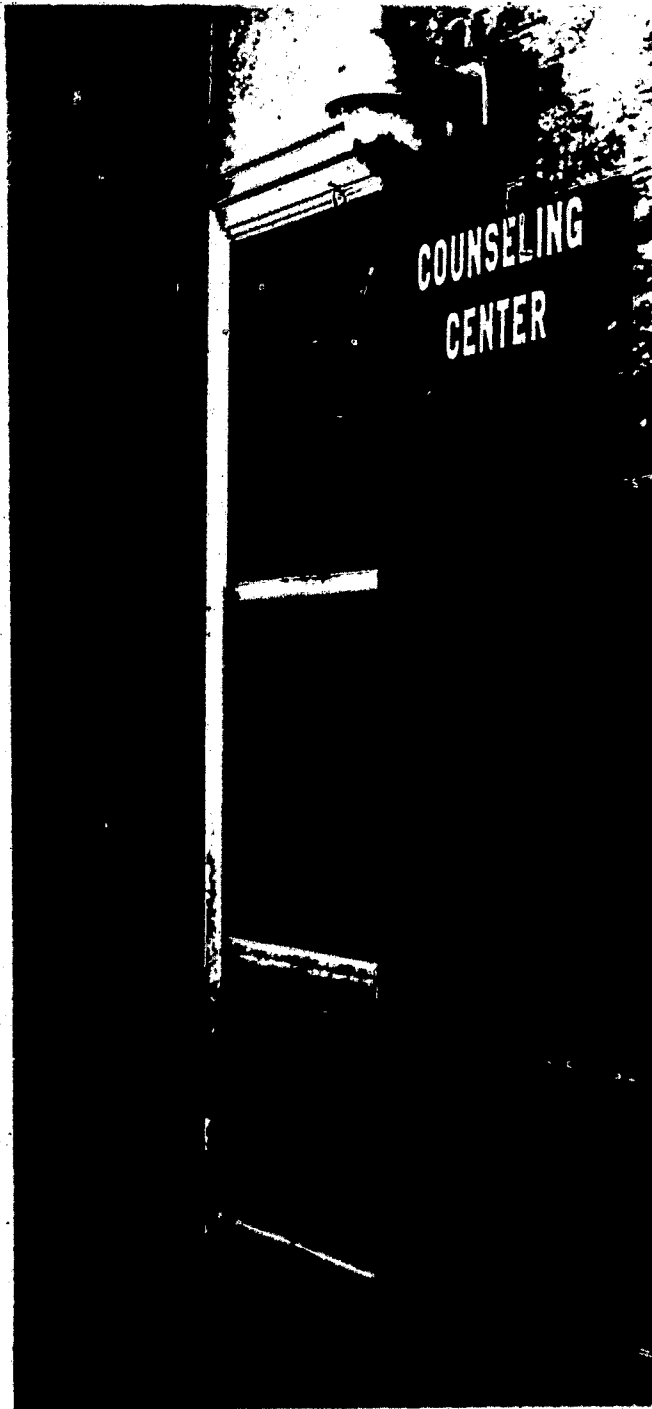
Catholic Mass is held on the campus each Sunday Morning for the Catholic students.

In addition to the city churches, Haskell students are served by the Haskell Baptist Mission, which is located adjacent to the college campus. The Center has a full-time minister available at all times and makes available to all students of all denominations its facilities for fellowship and spiritual inspiration. Church school begins at 9:30 a.m. and Sunday Worship Services at 10:50 a.m. Training Union begins at 6:30 p.m. each Sunday and the Evening Worship is at 7:30 p.m. Prayer Services are held every Wednesday at 7:30 p.m.

The Native American Church meets periodically on the Potawatomi Reservation near Mayetta, Kansas and also on the Kickapoo Reservation near Horton, Kansas.

Many of the churches make arrangements with small groups of students who wish to attend the Sunday morning worship services at a specific church. Members will come to the Dormitory and pick up the students and bring them back to the campus after the services are over. However, these students must make their wishes for transportation known so that arrangements can be made for them.





**[IF YOU NEED]
HELP AT HASKELL**

COUNSELING SERVICES

Understanding one's abilities, interests, goals and values enables a student to get the most out of his college experiences. The counseling services are designed to help students develop this understanding, and to assist each student in making the best possible personal, educational, and vocational plans in light of this understanding.

As each student considers his own special way of responding to his Indian heritage and his own traditions, he may wish to talk with a counselor. The services of a psychologist, social worker, and counselors are available at the Counseling Center from 8:00 a.m. to 5:00 p.m. Monday through Friday, or by appointment any time. To assist with planning and development, the Center has reference materials about different occupations, personal development, and catalogs of colleges and universities to which students may wish to transfer upon completion of their work here at Haskell.

Testing to provide ideas and information about vocations, interests, intelligence, aptitudes, study habits, and personality are available to assist the student in better self-understanding and selection of an appropriate program of study.

There are counselors available in the residence halls, during the student's out-of-school hours as well as during the day. The counselor works with the individual student on a one-to-one basis or in small group sessions according to the needs or desires of the students. You are encouraged to contact a counselor at any time you feel the need. Referrals are also taken and followed up by the counselors from any staff member.

We feel it is important for students to be able to talk with someone who is not a part of the discipline process. No reports are written and no one shall be told about your conference or about what you say to a counselor. The counselor is concerned about the student getting the most benefit he or she can from his stay at Haskell. It is our purpose and goal to contribute our various professional skills to the maturation of each student as an independent, creative, competent and critically thinking human being. The counseling staff also participates actively in the other phases of student services such as orientation, follow-up, etc.

TESTING

The formal testing program is coordinated by the Director of Student Personnel Services and the Director of Counseling. You will be asked to take one or more tests early in the semester. These tests are not to be confused with academic testing and/or grading, or with entrance examinations. They are valuable in helping the student to further understand his own capabilities, interests, and vocational abilities.

All freshmen taking college transfer courses should plan to take the American College Testing Program (ACT). Most colleges require that a student take this test before transferring. The test consists of English, Math, Social Studies, Natural Science, and a section to gather personal data.

The Career Planning Profile is given to students pursuing a Vocational or Technical Program. It consists of data gathering, interest, and skills.

The General Aptitude Test Battery (GATB) is given to all entering Vocational-Technical students. This test is required by the Employment Assistance in order for students to receive assistance during training and beginning employment.

LEGAL AID FOR HASKELL STUDENTS

Third year law students at the University of Kansas Law School, in cooperation with members of the Douglas County Bar Association, furnish legal assistance at little or no cost to those students at Haskell who meet certain financial guidelines - and this includes most Haskell students.

If you have marital problems or trouble with your landlord, LEGAL AID may be able to help you. If you lose your driver's license or have a car wreck, this service may also be able to help you. If you wish to buy a car or sign a contract, LEGAL AID may help to follow the best procedure. Even if you don't have a legal problem now but are worried about one in the future, SEEK LEGAL ASSISTANCE.

In many situations concerning the law, legal matters must be handled within a set time period. It is essential, therefore, that legal problems be brought to the attention of a lawyer or third year law student immediately. For this reason LEGAL AID has regular office hours in the Student Union, usually two days a week. The schedule will be posted. REMEMBER: If you have a legal problem, SEEK LEGAL AID IMMEDIATELY.

CAMPUS SECURITY

Traffic and Safety Program

The philosophy of the Campus Security, Traffic and Safety Program is to insure the protection and well being of all persons while on the campus of Haskell Indian Junior College. Specifically:

1. To uphold the rules and regulations set by the Student Senate and the administration, the laws and ordinances of the City of Lawrence and Douglas County, Kansas.
2. To aid and assist students and staff.
3. To protect the rights of students on and off campus.
4. To coordinate law enforcement efforts with city and county law officials when called upon to do so.
5. To protect all Haskell Indian Junior College property.
6. To make employment available to students wishing to work with campus security traffic and safety, and to promote and implement an in-service training program for both students and staff.
7. To promote public relations and establish good rapport and working relations with students, staff, and the community.



FINANCIAL AID PROGRAM

The primary purpose of the financial aid program at Haskell Indian Junior College is to provide financial assistance and advice to students who would be unable to pursue their education at the college without such help. In addition to budgetary advice and counsel, financial assistance consists of scholarships, grants, loans, and employment offered singly or in various combinations to meet the difference between the student's resources and the cost of attending the college.

The following information will introduce you to the various types of financial assistance available on the Haskell Campus as well as to the procedure for making application for assistance. We invite you to make further inquiries about our financial aid program and about the various ways in which a college education might be financed.

BUREAU OF INDIAN AFFAIRS HIGHER EDUCATION GRANT.

You are eligible to receive a higher education grant if you are pursuing a degree program at Haskell.

Although an application for a grant can be initiated at the school, the agency or the area office having service responsibility for the applicant's tribal group is responsible for the review and processing of higher education requests. A student interested in consideration for an initial BIA scholarship grant should either make personal contact, complete an appropriate application form or direct a letter to the proper agency or area office having record of his tribal membership. Such a letter should contain the applicant's full name, parents' name, address, tribal name and address, name and address of college, high school and/or college transcript, and educational objective. This procedure may be completed prior to making application for college acceptance, but the student must be accepted by or enrolled in the college before the scholarship grant is awarded.

The Financial Aids Office should be contacted for an official need evaluation at the earliest possible date. The student should request that a copy of the need evaluation be forwarded to his agency or area office. This need evaluation will likely define the college's financial commitment and the amount of unmet need. The Bureau scholarship representative will base the amount of the BIA grant award on the college's evaluation, particularly on the unmet financial need. A letter of notification of the Bureau's decision will be forwarded to the applicant.

Students receiving grant assistance must maintain acceptable academic standing and social conduct within the policies and rules of the college. Renewal applications for the following year's assistance must be in the form of a written request to be submitted along with a current financial need evaluation prior to April 1.

REMEMBER: The filing of an application does not mean that you will receive funding through the Higher Education Grant Program.

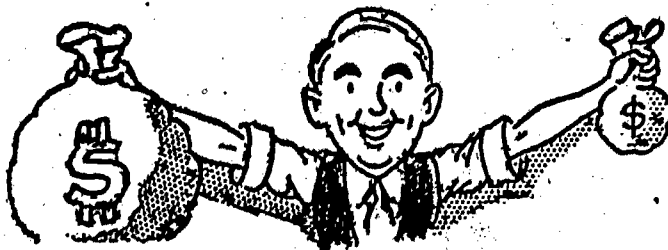
The vast majority of the American Indian student population assisted under the grant aid program are at the undergraduate level. Graduate and/or married students are eligible for consideration and assistance also. The college or university official need evaluation must reflect subsistence allowances for immediate family members. Application for grant assistance from Indian veterans will be accepted and consideration made for funding supplementary to the Veteran's Administration allowance, provided the need evaluation reflects unmet financial need. Summer and part-time students may be considered for assistance, provided application is made well in advance of enrollment and accompanied by an official need evaluation.

Eligibility for scholarship grant assistance is dependent upon certain established criteria; recipients must possess one-fourth degree American Indian, Eskimo, or Aleut blood, and have membership in a tribal group served by the Bureau of Indian Affairs. Financial need and scholastic ability are factors of consideration.

EMPLOYMENT ASSISTANCE.

The Bureau has designed the employment assistance program at Haskell mainly to assist married vocational students who plan to take their families to live with them while they are in training.

Vocational students are eligible to participate in the Bureau's Employment Assistance Program under Public Law 959. Under this program eligible students can receive housing and subsistence for off-campus living, both for single and married units. Application for benefits under PL 959 should be made through the Employment Assistance Branch of your agency before reporting to Haskell.



The following is a schedule of monthly allowances for employment assistance students:

<u>UNIT</u>	<u>MONTHLY ALLOWANCE</u>
Single	\$184
Family Head	\$184
Family Head + 1	\$248
Family Head + 2	\$301
Family Head + 3	\$321
Family Head + 4	\$358
Family Head + 5	\$385
Family Head + 6	\$401

REMEMBER: The filing of an application does not mean that you will receive funding through the Employment Assistance Program.

LOANS

Emergency loans not exceeding \$25 are available for emergency expenses. Repayment is normally made within 30 days. No interest rates are charged.

VETERAN'S BENEFITS

Students who qualify for Veterans' benefits under the program established by Public Law 89-358, will be certified to the Veteran's Administration by the Financial Aids Office.

Eligibility for educational benefits is dependent on service in the U.S. Armed Forces for at least 181 days, any part of which was after January 31, 1955. For each month of active duty, a veteran is entitled to one and one-half months of educational assistance, up to a maximum of 36 months.

Application forms for veterans benefits may be obtained in the Financial Aids Office, as well as the Regional Office of the Veterans Administration. This should be done well in advance of the date of enrollment in the college.

Dependents of deceased or disabled veterans are entitled to certain educational benefits under Kansas and Federal laws. Certification of their enrollment is also a function of the Financial Aids Office.

SOCIAL SECURITY

Many Haskell students are eligible for education benefits from the Social Security Division of the Department of Health, Education, and Welfare. You should check with your local representative before reporting to Haskell to see whether you can collect benefits.

GENERAL INFORMATION FINANCIAL AID

Financial Aid comes in many forms and in varying amounts from different Agencies and Tribal Offices and from within the same Agency and Tribal Office. Most all forms of aid requires the student to start procedures early and definitely while they are at home where they have access to family help with particular numbers, figures, information and signatures. To do these at Haskell can bring long delays doing business through the mail service.

Follow these steps:

- (1) Fill out Financial Needs Analysis Statement and return to the Haskell Financial Aids Office.
- (2) Fill out Student Financial Aids Application and return to the Haskell Financial Aids Office.
- (3) Contact your Agency and/or Area Office and complete all appropriate applications for programs such as
 - (a) Employment Assistance.
 - (b) Higher Education.
 - (c) Tribal Scholarships.
 - (d) Tribal Travel Assistance.
- (4) When you arrive at Haskell, part-time student employment through College Work Study will be coordinated during registration. If you have any questions contact the Financial Aids Office.

GRANTS, EMPLOYMENT ASSISTANCE AND OTHER FINANCIAL AID.

A social security claimant needs the social security number, date of birth, date of disability, retirement or death of the parent or legal guardian.

A veteran or dependent of a veteran needs the veteran's claim number (C number), date of birth, discharge, disability, or date of death and social security number to file for a certificate of eligibility. Bringing the certificate of eligibility to Haskell will speed up the receiving of your benefits.

A few scholarships have been created for students by some anonymous donors, groups, and institutions. Most of the scholarships are for second-year students or Haskell graduates who are furthering their education. Application for these are made through the Financial Aids Office.

Having received and sent back to Haskell your Financial Needs Analysis Statement and Student Financial Aids Application will establish your eligibility for financial aid under Work Study or EOG (Educational Opportunity Grant) funds. You may then start to work as soon as you arrive on campus instead of a long wait.

Filing for Higher Education Grants from your Agency or Employment Assistance from your Tribal Office early while at home (March or November) may make the availability of funds upon your arrival at Haskell a reality instead of having to wait sometime for them to be processed. For further information see section on Bureau of Indian Affairs Higher Education Grant.

Finances at Haskell are at a minimum being there is no cost for tuition, fees, books, supplies, food, on campus housing, medical and dental care. Generally speaking, the same type of clothing you have been wearing to school is also appropriate at Haskell. However, every college student has needs to replace necessary clothing and transportation costs regardless of where they attend college.

COLLEGE WORK STUDY - STUDENT EMPLOYMENT.

Employment at Haskell comes under the College Work Study Program which is financed by Federal funds from HEW. A student's financial needs can only be established by their filing with the college a Financial Needs Analysis Statement. A student must then make application for this amount of money and can then work at an hourly wage until he or she has earned the amount allotted as determined by their need. A student should carefully study the Expense Estimate Sheet in determining his financial need.

It is important that a student file a Financial Needs Analysis Statement while at Haskell if he seeks further educational opportunities beyond Haskell. A Financial Needs Analysis Statement transfers with a student to other colleges. The accepting college then may pick up the Haskell student with at least the same amount of subsistence. If the student does not file a statement at Haskell then the other college does not have to consider him or if they do it is at the beginning level of assistance.

A brief description of each area of employment is stated below.

1. Food Service (Dining Hall) - This work includes the serving of food, cleaning the dining area and washing dishes. No one person is involved in all areas at once - just certain jobs.
2. Dormitory Aid - This work involves working in the dorm office and assisting the staff.

3. Janitorial - This work involves cleaning of the dormitories, classroom, buildings and offices and the student union. Most of the jobs at Haskell are in this category.
4. Plant Management - This work involves working with Plant Management Personnel in cleaning the campus and non-classroom buildings. Most of the work is after class hours and on weekends.
5. Publications - This work includes cleaning of the building and helping in preparing orders for shipment.
6. Recreational - Intramurals - This work involves the administrative, organizational, operational, refereeing, and umpiring of activities.
7. Secretarial - Clerical - This work involves general office practices in Administrative, instructional and staff offices.
8. Student Security - This work involves working with Security Staff on and off campus. It requires many late hours and subject to 24-hour call.
9. Student Union - Snack Bar - Book Store. This work involves short order cook experience, soda fountain work, selling of merchandise along with the operation of a cash register.
10. Lab Assistants - This work involves assisting science instructors and students with experiments and cleaning equipment.
11. Tutorial Services - This work involves helping students on a one-to-one or groups basis with their weaknesses in subject areas. The student needs to be competent in the area of their instruction.

HEALTH SERVICES

The PHS School Health Center, staffed with a physician, dentists, nurses, and administrative personnel, cares for the health of all students and their dependents. Illnesses are given prompt and professional attention. If needed, the services of other physicians and facilities in Lawrence, Topeka and Kansas City are available.

Complete physical examinations, medical histories and immunization records are required of all students when entering school. Additional physical examinations are given to athletes in inter-scholastic sports, students seeking employment and when medically indicated.

Necessary immunizations are given and kept up to date against such diseases as diphtheria, tetanus, polio, whooping cough, measles, mumps, rubella, and influenza. Besides checking vision and hearing, diagnostic testing for tuberculosis is performed. X-rays are taken as needed.

The Health Center, in cooperation with other departments, promotes a general health program on the campus. Student committees are active, health material is included in classroom instruction. Special meetings and convocations are called to acquaint students with pertinent health information.

"Students who graduate or drop out of school are no longer eligible for health care at the Haskell Indian Junior College Health Center or to bill their health expenses to the Health Center."

I. Clinic Hours

A. General Medical Clinic Hours:

Monday, Tuesday, Thursday, Friday - 8:30 a.m. to 11:00 a.m.
Monday, Tuesday, Wednesday, Friday - 2:00 p.m. to 4:30 p.m.

B. Specialty Clinics

Prenatal Clinic - 2nd Thursday of each month.

Well Child Clinic - 3rd Thursday of each month - 8:30 a.m.-11:00 a.m.

The Health Center is open five days a week (Monday - Friday) from 8:00 a.m. to 6:00 p.m. Appointments can be arranged.

II. Emergencies: Emergencies are cared for at all times.

A. For all students and dependents:

Emergencies occurring during the hours the Health Center is open will be seen at the Health Center.

B. What students living on-campus should do after clinic and on weekends.

If you become ill while on campus, you should contact the dormitory personnel on duty, who in turn will see that you get medical care. Transportation will be provided to the emergency room at Lawrence Memorial Hospital either by government transportation, private automobile or ambulance.

If someone injures themselves on-campus and need to be taken to the emergency room, this can be done directly without going through the dormitory personnel unless transportation is needed.

C. What students and families living off-campus should do after clinic hours and on weekends.

Those students living off-campus, but who injure themselves while on campus should contact the dormitory personnel or go to the emergency room by themselves.

Those students and families living off-campus and who require medical attention at the emergency room should arrange transportation by private, or public means or call an ambulance.

If an off-campus student or dependent is seen in the emergency room after clinic hours, the Health Center should be notified within 24 hours, or as soon as possible, so that authorization for payment can be made.

III. Appointments need to be made through the Health Center with private physicians unless warranted by extreme emergency after clinic hours.

IV. If a student is seen in another city on an emergency basis, in a clinic or hospital, please notify the Health Center within 24 hours or as soon as possible.

V. Filling of Prescriptions; Prescriptions received from other physicians should be brought to the Health Center for filling. Prescriptions received after clinic hours and if not an emergency, may be filled at the Health Center the following day. If an emergency, your prescription may only be filled at Rankin Drug Store at 11th & Massachusetts Street.

PHS cannot be held responsible for payment of prescriptions filled at any other drug store.

- VI. The ordering of eyeglasses has to be done through the Health Center. Otherwise PHS will not be responsible for the cost of glasses or refractions.

DENTAL PROGRAM

The Haskell Health Center provides comprehensive dental care to all students who request that care. For most students your years at Haskell will be your last opportunity to get comprehensive Indian Health Services care. Most adult Indians receive only emergency Dental services once they have left school. We'd like you all to leave Haskell not only with an education but also with a healthy, functional mouth, that you'll be able to keep in good health with minimal personal expense as the years roll by. We have provided interested students with fixed bridges to replace missing front teeth and even removable partial dentures where too few teeth were left for chewing. Most people in your age group have the beginning of gum disease, i.e., bleeding gums which if left untreated will slowly cause the loss of teeth. We can treat this and show you how to prevent it when it is just beginning. Suppose your front teeth are sore or have dark holes in them. We can do root canal work in most instances and save those teeth rather than pulling them.

Perhaps you just fractured a front tooth - let us know right away, and maybe you just need some fillings, we'd rather do that now than something more drastic in later years. Sure, we'll do extractions, but only if this is necessary and you agree. Maybe you've got a really bad problem or maybe you feel you have no problem at all, let us see, we're trained to know and we are here to treat you. If you're a little nervous about the dentist ask a friend who's been here. We think you'll like us and our results when you're through. Just drop by for an appointment.

Services we can provide for you include:

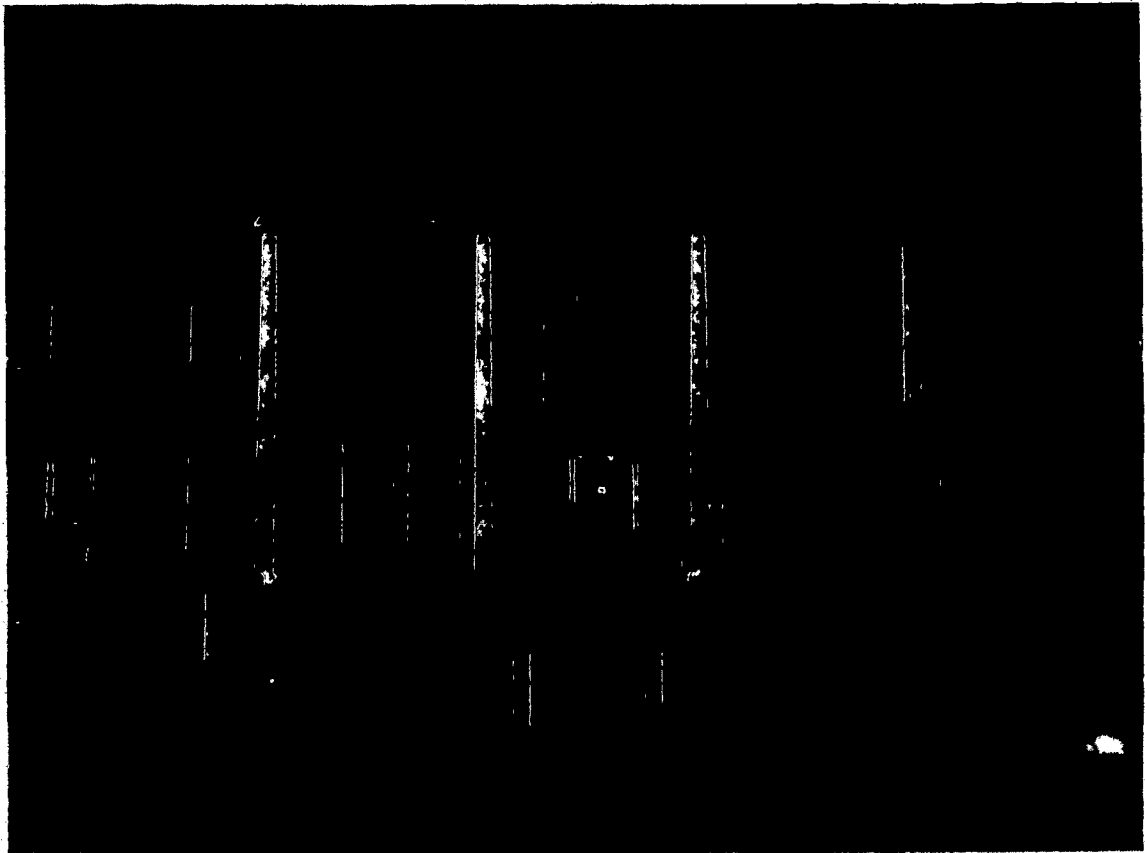
Emergency Services - No appointment needed. Just come right over.

Prophylaxis and Topical Fluoride Treatment - Slows decay and gum disease.

Preventive Periodontics - Stops gum disease.

Corrective Services - Fillings, Root Canal Treatment, Extractions and Surgery as necessary.

Rehabilitative Services - Bridge work for front teeth,
Dentures if indicated, Correction
of gross gum defects.



YOUR RIGHTS



STUDENT RIGHTS

The office of the Dean of Students Services shall have primary responsibility for implementing a system of student discipline designed to protect and insure the constitutional rights of all students.

Offenses which may be termed flagrant, unacceptable or destructive and a clear violation of regulations will be referred to the office of Student Services for investigation and determination of appropriate action.

In all cases which may result in the suspension or expulsion of a student from the college, the Student Court shall have primary authority.

The Dean of Students or his designate will review with the student the nature of the alleged offense and supporting evidence and may recommend disciplinary action if such appear to be warranted.

The student has a right to a full and fair hearing before the Student Court. This hearing will be held for the purposes of determining the student's guilt or innocence of the alleged offense, and upon a finding of guilt, determining the appropriate disciplinary action.

No student will be required to exercise his right to a hearing, but he must affirmatively waive this right before it is lost to him.

The student can enter a plea of guilty and thereby admit that he committed the offence that he is charged with.

A guilty plea will not preclude the student from coming forward with a reason for his misconduct and presenting evidence in mitigation of that conduct.

A student may, on a guilty plea, choose to be disciplined by either the Student Court or the Dean of Students. The student may choose not to be present at his disciplinary proceeding without prejudice.

A hearing can not be held without the student being present unless (1) he has been notified of the charges against him and (2) he has been given adequate time to prepare a defense; and (3) he has been notified of the date and time of the hearing and (4) he has affirmatively waived his right to the hearing.

A student may be temporarily removed from the campus by the President or his designated representative in cases in which a student's physical or emotional safety is of concern, when the safety of persons or of property is threatened or when the orderly progression of the educational objective is jeopardized.

This temporary removal will be followed by a full and fair hearing within one week of the removal.

A. DEFINITIONS

The following are forms of disciplinary actions which may be given to students because of social behavior. While disciplinary suspension and dismissal are generally preceded by adequate warning, the lack of previous warning does not limit the imposition of disciplinary suspension in the event of serious violation of college regulations.

1. An official warning - generally an oral or written notice that the expected standard of conduct is not being maintained. The warning may be for general conduct or specific acts.
2. Social Probation - is usually for a specified length of time and may include special sanctions.
3. Disciplinary Probation - Student Court Decision. This action is a severe disciplinary measure and contains special sanctions including a curfew hour. Students placed on a Disciplinary Probation are not eligible to hold student offices or officially represent the college. During the specified probationary period the student's improvement will be closely monitored and continued unsatisfactory performance will be considered basis for suspension or dismissal.
4. Suspension - This action is for a minimum of one full semester and a student may request to be readmitted after that time.
5. Dismissal - This action constitutes permanent action against the student and prevents future enrollment. This action is recorded on the student's official transcript and is used only when previous efforts and actions have failed.

B. PROCEDURAL DUE PROCESS

1. A student who allegedly fails to meet the established standards of conduct will be notified in writing of the regulation(s) he is accused of infringing and of his

rights of due process. If he does not choose to dispute the facts presented, he will be offered the opportunity to amend his behavior, or make reparation, and accept informal disposition rather than enter into disciplinary proceeding.

2. A student entering into a disciplinary proceeding will be informed, in writing, of charges against him, with sufficient particularity and in sufficient time to assure him opportunity to prepare an adequate defense.
3. A student charged with a violation of regulation has the right to choose whether to be assisted in his defense by a legal counsel or other adviser of his choice, from within or without the institution.
4. The accused student may choose whether his case will be heard by the Student Court or Dean of Students. The Student Court will be selected according to the established procedures. (See Student Senate Constitution Article)
5. The hearing will be private unless the accused student requests a public hearing.
6. The accused student has the right to confront his accuser in a full and fair hearing, to cross-examine his accuser, and to present evidence and testimony to discredit or disprove the accuser's testimony.
7. The student is presumed innocent until proven guilty. No finding of guilt will be made without a confession and/or the testimony of the accuser.
8. A student requested to appear before the Student Court may refrain from doing so without prejudice (without creating a presumption of guilt).
9. A written notice of the decision rendered on the grounds on which it was made will be provided the accused student.
10. The student may appeal any decision of the Student Court or Dean of Students to the President of the College. The student must request the appeal within five working days of his notice of the decision.
11. No greater punishment can be given after appeal than was given by the Dean of Students or the Student Court in the original hearing.
12. The student may appeal the decision of the court or Dean of Students to the Board of Regents, and may carry a further appeal to the courts.

The President of the College:

The President is the office of final appeal as executive officer of the Board of Regents. The President hears appeals from the Student Court decisions, and the Dean of Students decisions. The President will review and approve all suspension and dismissal cases.

The Dean of Students:

The Dean of Students is the college disciplinary officer. He may not act as a prosecutor, but will assign an individual to act as prosecutor in all Student Court hearings. Major disciplinary actions such as disciplinary probation, suspension, and dismissal are referred to the Student Court for a hearing, unless the student requests in writing that the Dean of Students sit in judgment of him.

The Student Court:

The court, composed of two faculty members and three students, is the major disciplinary recommending agency of the college. Members are appointed by the President's advisory council of the college and the Student Senate. The Dean of Students will delegate a person to act as prosecutor of cases.

The Student Court has two distinct and separate functions with reference to disciplinary proceedings. The first function is to determine the guilt or innocence of the accused by examining all relevant evidence and listening to testimony and arguments for both sides in an advisory type proceeding. The second function comes only after a finding of guilt, or a guilty plea. This function is to determine the appropriate disciplinary action. The court will hear any evidence presented in mitigation or explanation of the improper conduct as well as any other evidence the court determines is relevant. (i.e. grades, record, etc.). The Student Court may recommend any penalty presented in the definition section of the Students rights section. The court also hears proposals from the Student Senate.

Director of Student Activities:

The Director of Student Activities in conjunction with the Campus Activities Board imposes sanctions on students violating college rules and regulations incurring in the Student Union and at social events. Reports, sanctions and/or recommendations to the Dean of Students.

The Student Senate Committee will be appointed by the Student Senate and will review standards and regulations pertaining to students.

This committee may make recommendations directly to the Student Court. This committee will neither hear nor have voting power in matters of censure.

Residence Hall Hearing Committees:

These committees are established in residence halls. They have authority to hear violations of their own house rules and may assess warnings and penalties of a lesser nature.

The Dean Of Instruction and Division Chairman:

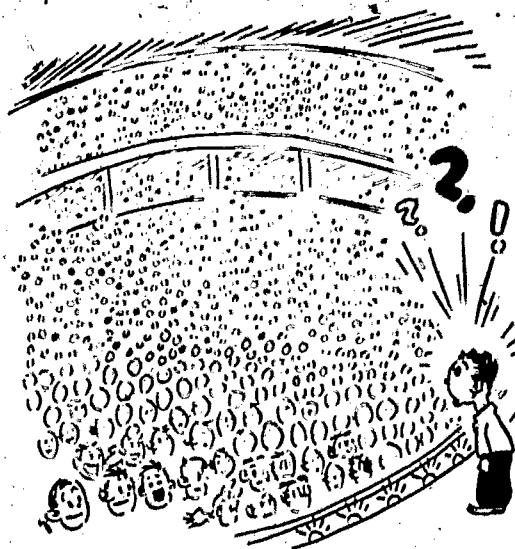
This committee has authority to recommend action for breaches of classroom conduct, cheating, attendance, and other infractions involving academic matters, examinations, etc. Recommendations are made to the Dean of Students.

Campus Security Officer:

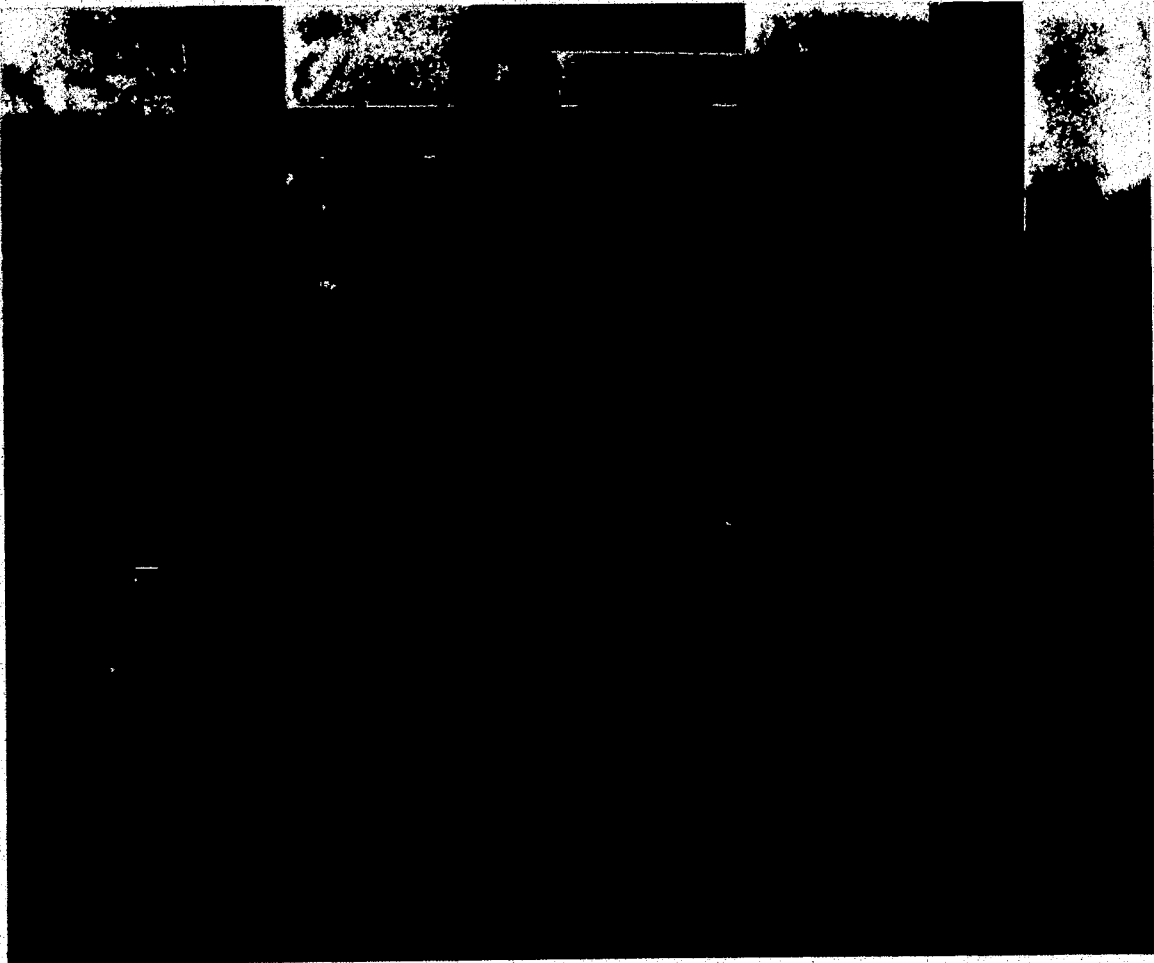
Makes recommendations pertaining to campus violations and vehicular matters to the Dean of Students.

Admissions and Retention Committee:

Authority to implement regulations pertaining to the admission and retention of students. Also recommends action to the Dean of Students in cases where students are not meeting requirements of the college service program.



YOUR RESPONSIBILITIES



STUDENT RESPONSIBILITY

Upon completion of enrollment, the student and Haskell Indian Junior College enter into an agreement of mutual responsibility. The college, in its efforts to create an environment conducive to learning and the development of ethically sensitive and responsible persons, is obligated to advise the student of established policies and procedures and to encourage his participation and representation in areas of direct concern. It is a student's obligation to act as a responsible member of the college and larger community; to accept policies that have been established and respect national, state and local laws.

GUIDELINES:

1. Policies and regulations of Haskell Indian Junior College shall conform to the principles of guaranteeing students the freedom of any responsible citizenry.
2. Haskell Indian Junior College has the duty to provide to students those privileges, opportunities and protection which promote the learning process.
3. Students must accept their responsibility to conduct themselves in such a manner as to not interfere with the rights of others and reflect courtesy, good taste and consideration by their behavior.
4. Being a student does not relieve the student of his obligation as a citizen. The conduct and social actions of students (on or off campus) is of concern to the college. Students will not receive special consideration if apprehended for a violation of national, state or local laws. In addition to being liable to prosecution and punishment by civil court, students may also be subject to disciplinary action by the college.
5. Students will participate in formulating and revising behavioral codes and recommending such changes to the administration for approval.

STUDENT CONDUCT CODE

The Haskell Indian Junior College Student Conduct Code emphasizes each student's individual responsibility for maintaining appropriate behavior. These general regulations are based upon the laws of the State of Kansas, ordinances of the City of Lawrence and the philosophy of Haskell Indian Junior College.

- A. Refrain from bringing to or using on the Haskell campus alcoholic beverages and illegal drugs. Intoxication is a violation of regulations.
- B. The use of or possession of firearms or other lethal weapons are prohibited on the campus or in the resident halls.
- C. Gambling is prohibited on the Haskell campus and at Haskell activities.
- D. Violent or disruptive actions such as fighting and unlawful assembly are not permitted on the Haskell grounds.
- E. Theft of personal, private and institutional property will not be tolerated and may lead to legal prosecution.
- F. Prohibited from entering buildings and areas that are locked or off limits.
- G. Recognize and follow the Haskell policy of honest and ethical practice in all academic classes and endeavors.
- H. Attend classes and assemblies in accordance with Haskell attendance policies.
- I. Abide by resident hall hours.
- J. Show respect for property by not engaging in its defacement or destruction.
- K. Help to preserve the attractiveness of the Haskell campus by not littering and abusing the grounds.

It is my understanding that to be found in violation of any of the above-mentioned regulations in accordance with established disciplinary procedures could result in my suspension or expulsion from HASKELL INDIAN JUNIOR COLLEGE.

AUTOMOBILES & YOUR RESPONSIBILITIES

As the owner or driver of an automobile, there are certain facts about the law in Kansas that you should know. The following check list covers some of the most frequently asked questions as well as some little known facts about the motor vehicle laws. This list does not include everything so if you have any questions - SEEK LEGAL ASSISTANCE.

IF YOU HAVE AN ACCIDENT

If you have an accident and someone is hurt or any car is damaged, YOU MUST UNDER THE LAW:

1. Stop and return to the scene of the accident.
2. Don't admit guilt.
3. Give your name, address, and car registration number to anyone involved in the accident.
4. Allow all those people involved in the accident to see your driver's license.
5. If a police officer is present, give him all of the information in (2) and (3).
6. If anyone is hurt, make sure he gets assistance; for example, make sure an ambulance is called if anyone is injured.

If you have an accident and anyone is hurt or the damage is more than \$100, YOU MUST UNDER THE LAW:

1. Call a police officer.
2. Make a report to the State Motor Vehicle Department, State Office Building, Topeka, Kansas, within 5 days. To be on the safe side, always file a report, since it is hard to tell what the amount of damage will be. (Report forms are available at the police station).

If the driver of the car you were riding in was badly hurt, YOU MUST UNDER THE LAW:

1. Make the report to the Motor Vehicle Department for him.

If you hit a parked car, YOU MUST UNDER THE LAW:

1. Stop and try to locate the owner.
2. If you can't find him, attach your name and address to the car where it can be seen.

CAMPUS CAR OWNERSHIP

Students operating motor vehicles on campus (cars, trucks, motorcycles, motorbikes or motor scooters) are subject to the rules and regulations governing the use of motor vehicles. This rule will be strictly enforced. Haskell Indian Junior College does not assume responsibility for the care or protection of any motor vehicle or its contents while operated or parked on the Haskell campus.

Owning a car is a great responsibility at Haskell Indian Junior College. For some students a car can interfere with their studies. Most students living on campus do not have a car with them during the school year.

Registration.

Student owned vehicles must be registered within one week following the beginning of any enrollment period. If you decide to bring your car you must be able to present the following when you register your car:

1. Your car registration showing proof of ownership.
2. A valid state driver's license.
3. Proof of liability insurance or proof of ability to pay a minimum of \$40,000 to cover the possibility of injury or property damage to others.
4. A \$5.00 registration fee is required for a decal to park and operate your car on the campus.

Decals must be affixed to the rear windshield in the lower left corner. Also, decals are not transferable.

You will be able to register your car in the enrollment line so be sure to bring the necessary papers with you when you enroll. Also your \$5.00 registration fee is required at this time.

Regulations.

State and local laws and the regulations listed below must be observed.

1. Do not exceed a maximum speed of 15 miles per hour on the Haskell grounds.
2. Always yield right of way to all pedestrians.

3. Obey regulatory signs (including parking regulations).
4. Reckless or hazardous driving is not permitted.
5. Report any accident on campus to the Dean of Students within 24 hours after the accident. Accidents which occur on the weekend must be reported by noon of the following Monday.

As the owner or driver of an automobile, there are certain facts about the laws in Kansas that you should know.

Parking.

Student designated parking areas are east of Osceola Hall, north of the stadium and east of Tinker Hall north of the Health Clinic, behind Powhatan and behind Winona Hall. All other parking areas are for visitors and staff.

If you are illegally parked on the Haskell Campus, the Lawrence City Police Department and the Haskell Campus Security have the authority to issue citations and do so.

APPENDICES



INFORMATION ABOUT THE COMMUNITY

Geographical Location:

Lawrence, the county seat of Douglas County, is located in the North-eastern part of Kansas. It is served by 3 railroads (freight) and Amtrack. Highways serving the area are U.S. 24, U.S. 40, U.S. 59, Interstate 70 and K-10. Lawrence is 25 miles from Topeka, the Kansas state capital, and 35 miles from Kansas City, and only 1 hour from Kansas City International Airport.

Climate:

Average annual temperature - 56.4
Average annual rainfall - 34.57 inches

Population: (Census figures accepted by State Board of Agriculture.)

Douglas County - 54,080
KU Lawrence enrollment - 18,350
Haskell Indian Junior College - 1,128
Lawrence population, including KU - 41,815

Transportation:

Railroads: Union Pacific, Atchison-Topeka & Santa Fe, Chicago Rock Island & Pacific
Airports: Lawrence Municipal and Kansas City International
Bus Lines: Continental Trailways, Greyhound, Lawrence Bus Company

Recreation Facilities:

Horseback riding, swimming, fishing, boating, water skiing, artificial snow skiing, golf, hunting, tennis, ice skating, roller skating, and stock car racing.

Sports:

Lawrence High, Kansas University, and Haskell Indian Junior College football, basketball, baseball, swimming, gymnastics, track, tennis, golf, and wrestling. Kansas City: Pro Baseball, Pro football, and Pro Ice Hockey.

General Information:

A. Financial Institutions:

Douglas County State Bank	9th and Kentucky
First National Bank	.900 Massachusetts
Kaw Valley State Bank (Eudora)	739 Main, Eudora
Lawrence National Bank	647 Massachusetts
University State Bank	955 Iowa

B. Medical:

Lawrence Memorial Hospital	172 beds, plus 38 bassinets
Watkins Memorial Hospital	40 beds

All Haskell Students have access to the following through the Public Health Hospital located on the Haskell Campus:

Physicians & Surgeons	- 36	Anesthesiologists	- 2	Neuropsychiatry	- 1
Dentists	- 20	Pediatricians	- 2	Gynecology	- 4
Optometrists	- 6	Ophthalmologists	- 3	Podiatrists	- 1
Chiropractors, D.C.	- 8	Genitourinary	- 1	Psychologists	- 3
Osteopaths, D.O.	- 1	Diagnosticians	- 2	Surgeons	- 7

C. News Media

Newspapers: The Lawrence Journal World (daily except Sunday)
The University Daily Kansas (student Newspaper)
The Lawrence Shopper (weekly)
The Douglas County Observer (weekly)

Radio: KLWN - AM & FM
KANU - FM, KUOK (University of Kansas)

Television: 7 stations received in Lawrence - 2 UHF - 1 educational
Sunflower Cablevision

D. Churches:	Protestant:	61	Jewish:	1
	Catholic:	1	Other:	1

E. Civic and Fraternal Organizations:

Lawrence has approximately 127 clubs listed as civic, service and fraternal.

F. Tourists Facilities:

Motels	11	Miniature Golf Courses	1
Skating Rinks	1	Bowling Alleys	3
Golf Courses	3	Parks	21
Ski Slopes	1	Movie Theaters	5
Restaurants and eating establishments	49	Drive-in Movie Theaters	1

UNIVERSITY OF KANSAS

The University of Kansas in Lawrence is a four-year college operated by the State of Kansas. It also offers degrees beyond the bachelor's degree in most areas of study.

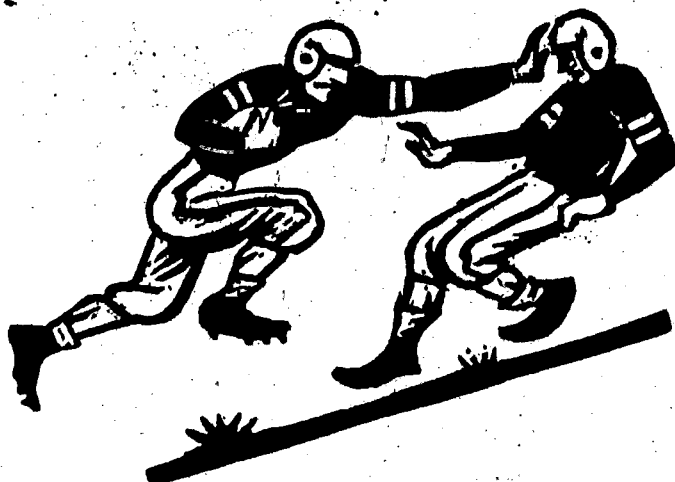
Now that Haskell is a Junior College, more cooperation is needed between the two schools because Haskell students may want to transfer to KU after they finish here. A group consisting of members of both schools is now planning a Department of Indian Studies at KU that they hope will serve people in a wide area of the Midwest. Part of that group is working on transfer procedures from Haskell to KU.

For information about KU or opportunities for Indian students, contact at KU:

Dr. Jerry Hutchison
Office of Academic Affairs
Phone: 864-4455

Watson Library at KU is open to Haskell students and is used by them for assignments and term papers.

There has been an exchange of faculty members between the two schools. There have been cooperative efforts in the departments of journalism, pre-nursing, architecture, and athletics, and Law Students from the University of Kansas operate the Haskell Legal Services program. It is hoped that cooperation between the two schools will continue to grow, and that you as a Haskell student will make use of any opportunities offered to you at the University of Kansas.



FIGHTIN'

INDIANS

1973 FOOTBALL SCHEDULE

Sept. 1	Northeastern Oklahoma A&M College Miami, Oklahoma "Golden Norseman"	There	7:30 P.M.
Sept. 8	Cowley County Junior College Arkansas City, Kansas "Tigers"	There	7:30 P.M.
Sept. 15	Butler County Junior College El Dorado, Kansas "Grizzlies"	Here	7:30 P.M.
Sept. 22	Fairbury Junior College Fairbury, Nebraska "Bombers"	Here	7:30 P.M.
Sept. 29	Wentworth Military Academy Lexington, Missouri "Red Dragons"	There	7:30 P.M.
Oct. 1	Kansas University Freshmen Lawrence, Kansas "Jayhawks"	There	2:00 P.M.
Oct. 6	Highland Junior College Highland, Kansas "Scotties"	There	7:30 P.M.
Oct. 13	Coffeyville Junior College Coffeyville, Kansas "Red Ravens"	There	7:30 P.M.
Oct. 20	Independence Junior College Independence, Kansas "Pirates"	There	7:30 P.M.
Oct. 27	Dodge City Junior College Dodge City, Kansas "Conquistadors" HOMECOMING	Here	7:30 P.M.
Nov. 1	Tulsa University Freshmen Tulsa, Oklahoma "Golden Gales"	Here	7:30 P.M.
Nov. 10	Ft. Scott Junior College Ft. Scott, Kansas "Greyhounds"	Here	7:30 P.M.

FIGHTIN'

INDIANS

1973 BASKETBALL SCHEDULE



Nov. 15, 16, 17 (Thurs, Fri., Sat.)	<u>Johnson County Classic</u>	There
Nov. 22, 23, 24	<u>Cougar Classic</u> -Great Bend, Kans. Barton County, Neosho County, Cloud County, Haskell	There
Nov. 30 Fri.	St. Pauls, Concordia, Missouri	There
Dec. 4 Tues.	Hesston, Hesston, Kansas	There
Dec. 7, 8 Fri. & Sat.	Kemper Tourney	There
Dec. 11 Tues.	Allen County, Iola, Kansas	There
Dec. 19 Wed.	Nebraska Southern, Fairbury, Nebr.	Here
Jan. 16 Wed	Penn Valley, Kansas City, Mo.	There
Jan. 19 Sat.	Allen County, Iola, Kansas	There
Jan. 23, Wed	Kemper Military, Boonville, Mo.	Here
Jan. 26 Sat.	Central, McPherson, Ks.	Here
Jan. 30 Wed.	Hesston, Hesston, Kans.	There
Jan. 31 Thurs.	Central, McPherson, Ks.	There
Feb. 5. Tues.	Penn Valley, Kansas City, Mo.	Here
Feb. 8 Fri.	Kemper Military, Boonville, Mo.	There
Feb. 9 Sat.	Wentworth Military Lexington, Missouri. Afternoon game 3:00 P.M.	There

Feb. 13 Wed.	Nebraska Southern Fairbury, Nebraska	There
Feb. 15 Fri.	Longview, Kansas City, Missouri	Here
Feb. 16 Sat.	St. Pauls' Concordia, Missouri	Here
Feb. 19 Tues	Wentworth Military Lexington, Missouri	Here
Feb. 21 Thurs.	Longview Junior College Kansas City, Missouri Ruskin Gymnasium	There
Feb. 25, 26, 27	Sub-Regional Tourney Play-offs	There
March 4, 5, 6	Region VI Tourney Play-offs	There

1973

FIGHTIN' INDIANS

TRACK SCHEDULE

Feb. 24	Kansas State College Indoors	Pittsburg, Ks.
Mar. 8 - 9	National Jr. College Indoors	Columbia, Mo.
Mar. 13	Haskell Triangular	Lawrence, Ks.
Mar. 23	Wentworth Indoors	Lexington, Mo.
Mar. 29	Cloud County Invitational	Concordia, Ks.
Apr. 4	Fairbury Relays	Fairbury, Nebr.
Apr. 5	Allen County Relays	Iola, Ks.
Apr. 10	Haskell Quadrangular	Lawrence, Ks.
Apr. 14	Wichita State Relays	Wichita, Ks.
Apr. 17	Haskell Night Relays	Lawrence, Ks.
Apr. 18-21	Kansas Relays	Lawrence, Ks.
Apr. 23	Ft. Scott Relays	Ft. Scott, Ks.
Apr. 27/ May 4	Mid-Central Conference Interstate Conference	Kansas City, Mo. Fairbury, Nebr.
May 19	NJCAA Regionals	Hutchinson, Ks.
May 24-26	National Jr. College Finals	Houston, Texas