

DOCUMENT RESUME

ED 090 831

HE 005 425

TITLE Student Enrollment in New England Institutions of Higher Education 1973-1974.  
INSTITUTION New England Board of Higher Education, Wellesley, Mass.  
PUB DATE [74]  
NOTE 85p.  
EDRS PRICE MF-\$0.75 HC-\$4.20 PLUS POSTAGE  
DESCRIPTORS \*Enrollment Trends; \*Higher Education; \*Statistical Analysis; \*Statistical Data; \*Student Enrollment  
IDENTIFIERS \*New England

ABSTRACT

Statistical data and analyses concerning student enrollment in New England institutions of higher education, 1973-1974, is presented. Data is divided to cover: (1) Enrollment in New England 1955-1973; (2) Enrollment Growth and Distribution Within the Six New England States; (3) Institutional Growth and Change in the Region 1955-1973; (4) Current Distribution of Institutions by Carnegie Classification in the Six New England States; (5) Growth and Distribution of Enrollment by Type; and (6) Growth and Change of Enrollment by Student Category and Institutional Type 1970-1973. Appendixes include the Carnegie Classification, Definitions of Student Categories, Enrollment Data, Key to Abbreviations for Institutional Data, and Institutional Data, 1973-1974. (MJM)

ED 090831

U.S. DEPARTMENT OF HEALTH,  
EDUCATION & WELFARE  
NATIONAL INSTITUTE OF  
EDUCATION

THIS DOCUMENT HAS BEEN REPRODUCED EXACTLY AS RECEIVED FROM THE PERSON OR ORGANIZATION ORIGINATING IT. POINTS OF VIEW OR OPINIONS STATED DO NOT NECESSARILY REPRESENT OFFICIAL NATIONAL INSTITUTE OF EDUCATION POSITION OR POLICY.

STUDENT ENROLLMENT IN NEW ENGLAND  
INSTITUTIONS OF HIGHER EDUCATION

1973 - 74

New England Board of Higher Education  
40 Grove Street  
Wellesley, Massachusetts 02181

## INTRODUCTION

The New England Board of Higher Education has been providing data on college and university enrollments in the region since 1957 as part of its annual publication, Facts About New England Colleges, Universities and Institutes. To provide more detailed enrollment data, the board initiated an additional annual publication Student Enrollment in New England Institutions of Higher Education of which this report is the third in the series.

In a continuing effort to increase the report's utility and broaden the range of users, the 1973-74 edition of Student Enrollment has been expanded and the format significantly altered. The Carnegie Commission's A Classification of Institutions of Higher Education, in modified form, has been adopted to provide greater sensitivity in the analysis of data. A detailed description of the Carnegie Classification and its adaptation for this report is provided in Appendix I. Historical data, where available, has been included to facilitate the interpretation of trends, and graphics have also been provided, where appropriate, for the summary reader. Although it is a difficult balance to maintain, the intent throughout has been to report sufficient data to be of use to the higher educational specialists of the region while providing a publication that remains informative to the general public.

Robert L. Melican  
Director of Research and Development  
New England Board of Higher Education

## ACKNOWLEDGEMENTS

Enrollment data would be impossible to aggregate without the cooperation and assistance of a large number of individuals and institutions. We wish to thank, in particular, the Connecticut Commission on Higher Education, the Chancellor's Office of the University of Maine System, the Massachusetts Board of Higher Education, the New Hampshire Postsecondary Education Commission, the Rhode Island Board of Regents and the Commission on Higher Education Facilities in Vermont for their assistance in collecting institutional reports from public colleges and universities and in some instances all institutions of higher education within their states. A number of institutions throughout the region do not as a matter of course submit enrollment data to state higher educational agencies. Their cooperation in submitting data directly to the Board is greatly appreciated. As a result, we can report on every institution in New England chartered to award postsecondary degrees.

The revision of format, reclassification and verification of data going back to 1955 has been an arduous task. Special appreciation is given to Marjorie Sheetz and Jeffrey Weinstein of the New England Board of Higher Education staff for their patient and untiring efforts.

## TABLE OF CONTENTS

Introduction	
Acknowledgements	
I Enrollment in New England 1955 - 1973	1
Total Enrollment	
Growth Rates of Enrollment	
Comparison of New England Enrollment Growth with U. S. Data	
II Enrollment Growth and Distribution Within the Six New England States	7
Growth Rates of Enrollment Within the States	
Distribution of Enrollment Among the States	
III Institutional Growth and Change in the Region 1955 - 1973	9
Growth in Total Number of Institutions	
Growth in Numbers of Institutions by Auspices	
Distribution of Enrollment by General Type and Auspices	
Distribution of Enrollment by Auspices	
IV Current Distribution of Institutions by Carnegie Classification in the Six New England States	13
Number of Institutions by Type in the States	
Number of Institutions by Type and Auspices in the States	
V Growth and Distribution of Enrollment by Type	16
Annual Growth Rate	
a) By Carnegie Classification	
b) By General Type	
Distribution of Enrollment by Type of Institution	
VI Growth and Change of Enrollment by Student Category and Institutional Type 1970 - 1973	20
First-Time Enrollment	
Undergraduate Enrollment	
First Professional Enrollment	
Graduate Enrollment	
Non-Degree Credit Enrollment	

## APPENDICES

I	The Carnegie Classification	30
	Carnegie Classification of Institutions of Higher Education Taxonomy of Enrollment Report	
II	Definitions of Student Categories	37
III	Enrollment Data: Total, Public and Private by Region, State and Type of Institution	38
IV	Key to Abbreviations for Institutional Data	59
V	Institutional Data 1973-74	60

**ENROLLMENT IN NEW ENGLAND**

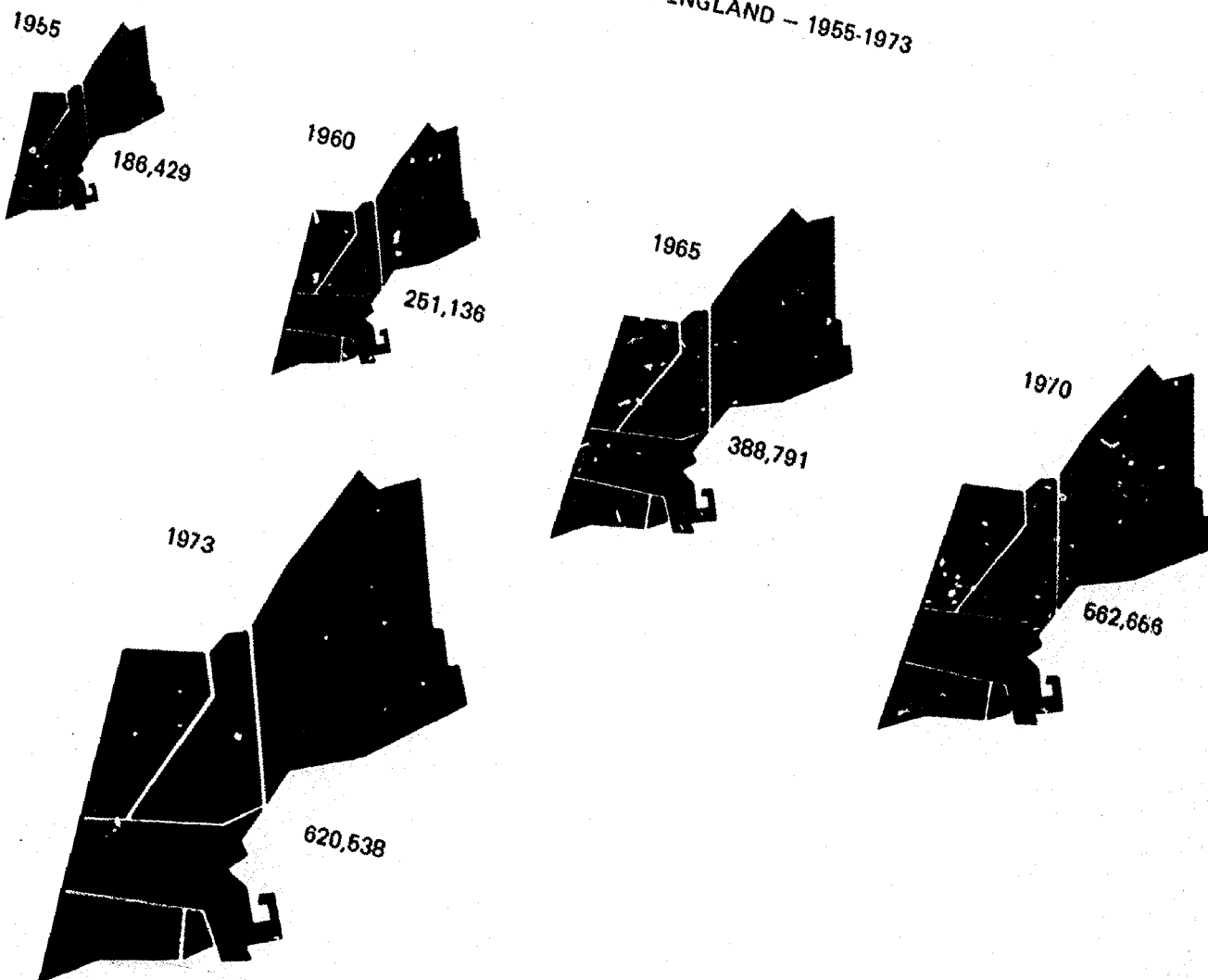
**1955 - 1973**



TOTAL ENROLLMENT IN NEW ENGLAND

The student population attending colleges and universities in New England, following national trends in higher education, has been growing in absolute numbers each year. In the past eighteen years the region has experienced a 233% increase in total enrollment. Today over 620,000 students are enrolled at the 263 institutions and distinct campuses that constitute the higher educational system of the region.

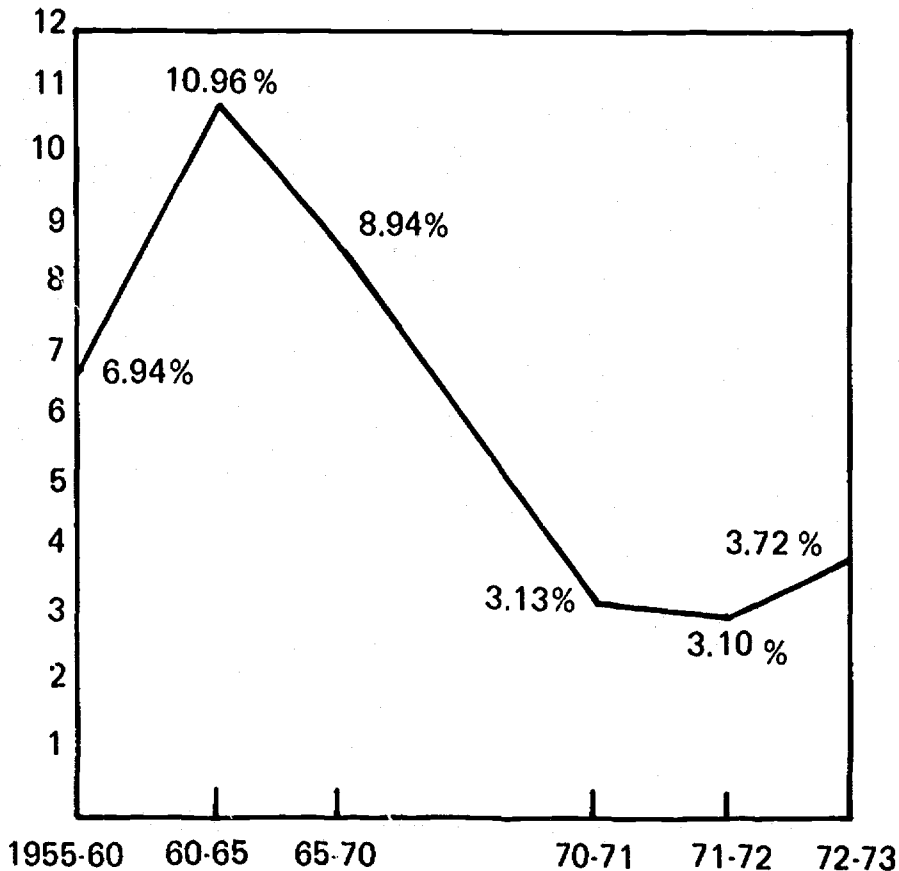
TOTAL ENROLLMENT IN NEW ENGLAND -- 1955-1973



## GROWTH RATE OF ENROLLMENT

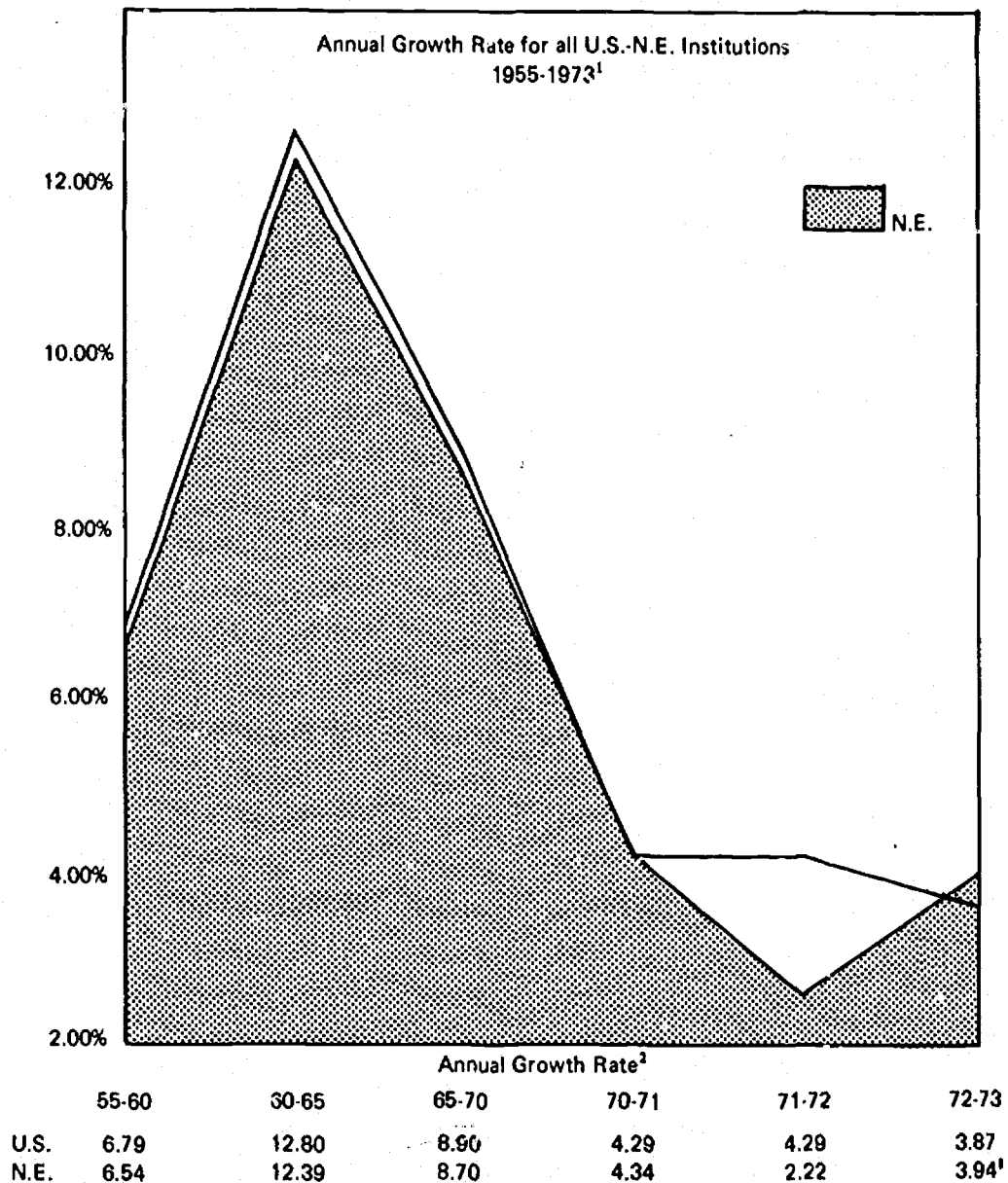
While total enrollment has increased each year the rate at which this growth has taken place has been on the decline from 1965 through 1972. This year marked the first time in eight years that the rate of increase in total enrollment exceeded that of the previous year.

### GROWTH RATE OF ENROLLMENT IN NEW ENGLAND 1955-1973<sup>1</sup>



<sup>1</sup>Data for five year periods between 1955 & 1970 represent average annual growth rates.

From 1955 the growth rate of New England's enrollment has lagged that of the country as a whole. Academic year 1973-74, however, saw the region's growth rate not only increase but for the first time in recent years exceed the national growth rate and counter a thirteen year trend of declining national and regional growth rates.



<sup>1</sup> Based on data reported by the National Center for Educational Statistics for those institutions reporting to the Federal Government. For comparability we have used only Federal data. The New England Board each year reports on a larger number of schools. This explains the discrepancy in growth rates reported.

<sup>2</sup> Data for five year periods between 1955 & 1970 represent average annual growth rates.

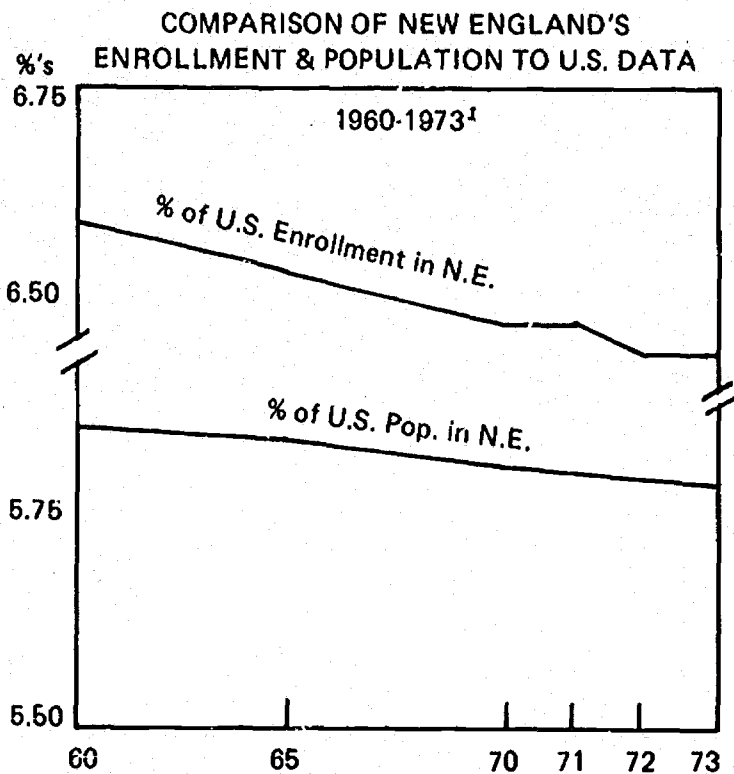
No long-term conclusions, however, may be drawn from this current increment in growth rate. Although access to higher education has been increased significantly over the past decade, particularly with the tremendous expansion of low cost public two year college opportunities, there are countervailing trends. Nationally and regionally birth rates are declining. For the past four years throughout the country the percentage of high school students enrolling in institutions of higher education has been declining from a high of 55% in 1968 to 49% in 1972.

**PERCENTAGE OF HIGH SCHOOL GRADUATES ENROLLED  
IN COLLEGE IN OCTOBER OF THE  
YEAR OF GRADUATION, 1962-72**

Year of graduation	All persons	Men	Women
1962	49	55	43
1963	45	52	39
1964	48	57	41
1965	51	57	45
1966	50	59	43
1967	52	58	47
1968	55	63	49
1969	54	60	47
1970	52	55	49
1971	53	58	50
1972	49	53	46

Source: U.S. Department of Labor, Bureau of Labor Statistics,  
*Employment of High School Graduates and Dropouts, October  
1972.*

Similarly, as the region's population has declined as a percentage of the total U.S. population, its share of the national student population has also declined. In 1960 New England represented 5.85% of the population of the United States but had enrolled within the region's institutions of higher education 6.61% of the national student population. In 1973 New England's share of the total population had slipped to an estimated 5.79% while its share of the national student market had decreased at a slightly more rapid rate to 6.44%.



Source: U.S. Bureau of the Census, Current Population Reports, Series P-25, Nos. 460 and 488 and unpublished data supplied by the National Center for Educational Statistics.

<sup>1</sup>Data for five year periods between 1960 & 1970 represent average annual growth rates.

The protracted outlook, given the current picture and trends over the past decade is, therefore, far from certain. Future trends in enrollment have been to a degree determined or limited through 1990 by past and current birth rates. There are, however, a number of variables which may alter significantly the degree to which the eighteen year old and older population attend institutions of higher education. Among the more prominent variables will be the skill level demands in an economy of technological change, cost factors, pricing decisions and changes in the social and political milieu affecting the decision to participate in higher education. For New England one of the more significant factors will be the economic condition of the region as it effects the size of population upon which its institutions of higher education draw and the financial base for their support.

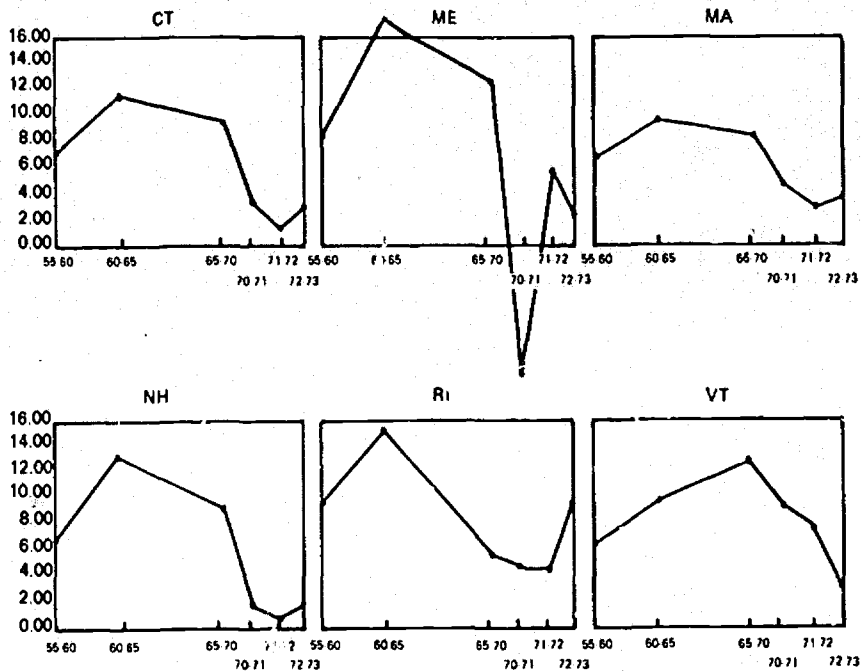
ENROLLMENT GROWTH AND DISTRIBUTION WITHIN THE  
SIX NEW ENGLAND STATES

## GROWTH RATES OF ENROLLMENT WITHIN THE STATES

The pattern of growth for the region is reflected unevenly within the states. In some instances, it can be quite volatile as evidenced particularly in the State of Maine.

By virtue of the size of its student population, Massachusetts has a profound impact on the growth rate of the region. Significant variations in growth rate among the other states may, however, determine the regional pattern in any given period. Thus in the period between 1970 and 1971, while the Massachusetts growth rate was 4.36%, an absolute decline in enrollments in Maine and significantly lower growth rates in Connecticut and New Hampshire, brought the regional growth rate down to 3.13%.

PERCENTAGE GROWTH RATE OF ENROLLMENT BY STATE  
1955-1973<sup>1</sup>



ANNUAL GROWTH RATE IN PERCENTAGES<sup>1</sup>

	55-60	60-65	65-70	70-71	71-72	72-73
CT	7.30	11.62	9.83	3.29	1.34	3.19
ME	8.11	15.64	12.02	(-11.52)	7.39	2.35
MA	6.44	9.57	8.23	4.36	2.97	3.49
NH	6.88	12.91	9.21	1.86	1.19	1.55
RI	9.87	14.94	7.51	4.61	4.56	9.16
VT	8.01	9.74	12.16	9.17	7.91	3.39
N.E.	8.94	10.96	8.94	3.13	3.10	3.72

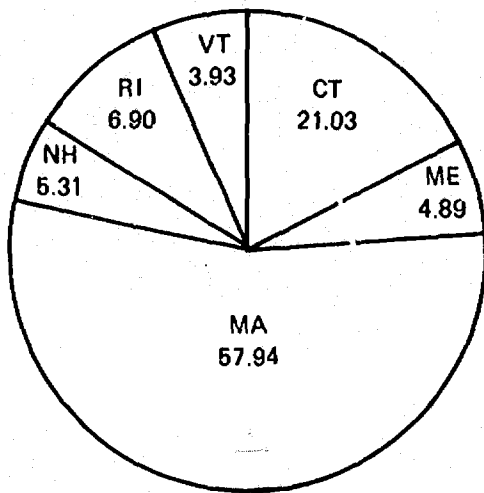
<sup>1</sup>Data for five year periods between 1955 & 1970 represent average annual growth rates.



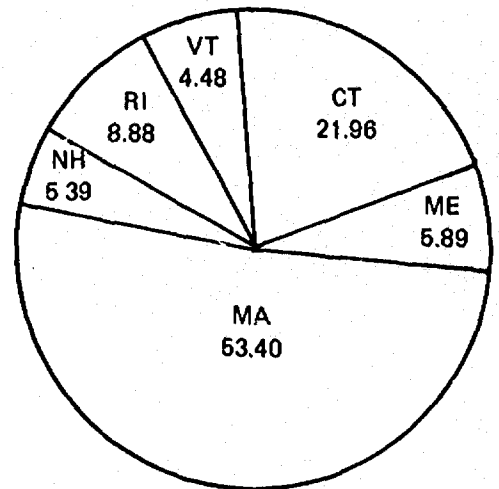
DISTRIBUTION OF ENROLLMENT AMONG THE STATES

The uneven distribution of growth rates within the states has had, over the years, a perceptible influence on the distribution of the student population within the region. Massachusetts maintains a dominant position with a 53% share of the regional student population. This share of the student population is down from the almost 58% share Massachusetts enjoyed in 1955. The most significant increase in the share of the regional student population has been experienced by Rhode Island. In 1955, it represented 6.9% of the region's student population, while in the current year, Rhode Island represented 8.88% of the student enrollment in New England.

PERCENTAGE OF TOTAL ENROLLMENT BY STATE



1955



1973

PERCENTAGE OF ENROLLMENT BY STATE  
(Market Share)

	55	60	65	70	71	72	73
CT	21.03	21.31	21.76	22.43	22.46	22.08	21.96
ME	4.89	5.10	6.03	6.68	5.73	5.97	5.89
MA	57.94	56.84	54.29	52.96	53.69	53.52	53.40
NH	5.31	5.30	5.64	5.63	5.61	5.50	5.39
RI	6.90	7.65	8.63	8.20	8.32	8.44	8.88
VT	3.93	3.80	3.65	4.05	4.29	4.49	4.48
	100.00	100.00	100.00	100.00	100.00	100.00	100.00

**INSTITUTIONAL GROWTH AND CHANGE**

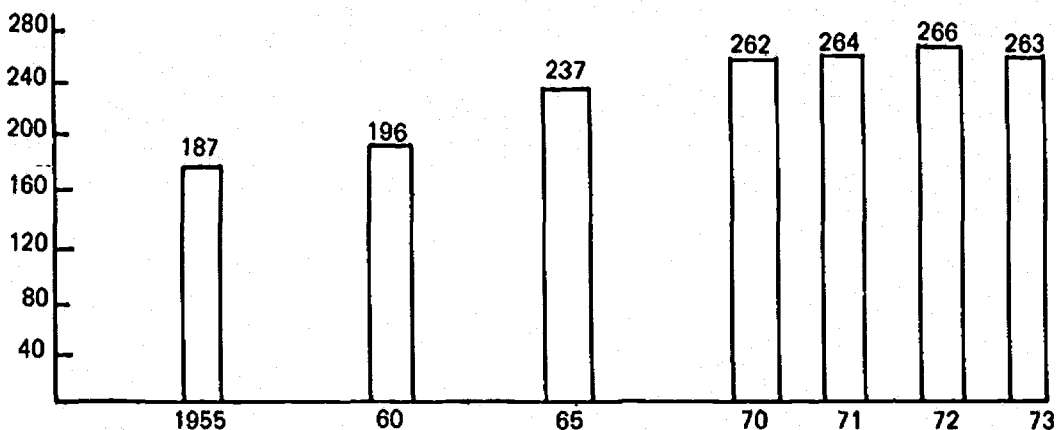
**IN THE REGION 1965 - 1973**

## GROWTH IN TOTAL NUMBER OF INSTITUTIONS

Varying growth rates evidenced within states that determine regional growth and distribution of student enrollments have also had an impact on the configuration of institutions which provide educational opportunities to the region.

Between 1955 and the present, the number of institutions serving the region has grown from 187 to 263. This past year saw the first absolute decline in the total number of institutions within the region.

TOTAL NUMBER OF INSTITUTIONS  
IN  
NEW ENGLAND - 1955-1973



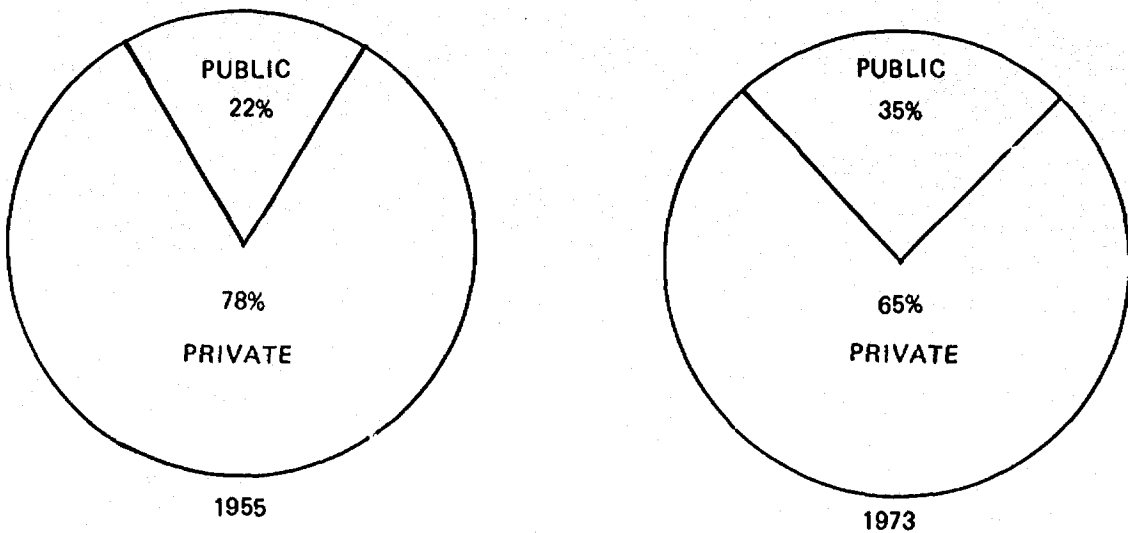
Behind the figures showing the total number of institutions, their growth and current decline, is masked a shift in the percentage of institutions administered under public and private auspices.

GROWTH IN NUMBERS OF INSTITUTIONS BY AUSPICES

Public/Private

The public sector of higher education in New England has grown significantly in the past 18 years. Since 1955, there has been a 121% increase in the number of public colleges and universities serving the region. From a mere 42 or 22% of the institutions in 1955, the public sector has grown to 93 or 35% in the academic year 1973-74.

PERCENTAGE OF INSTITUTIONS PUBLIC/PRIVATE  
IN  
NEW ENGLAND - 1955-1973



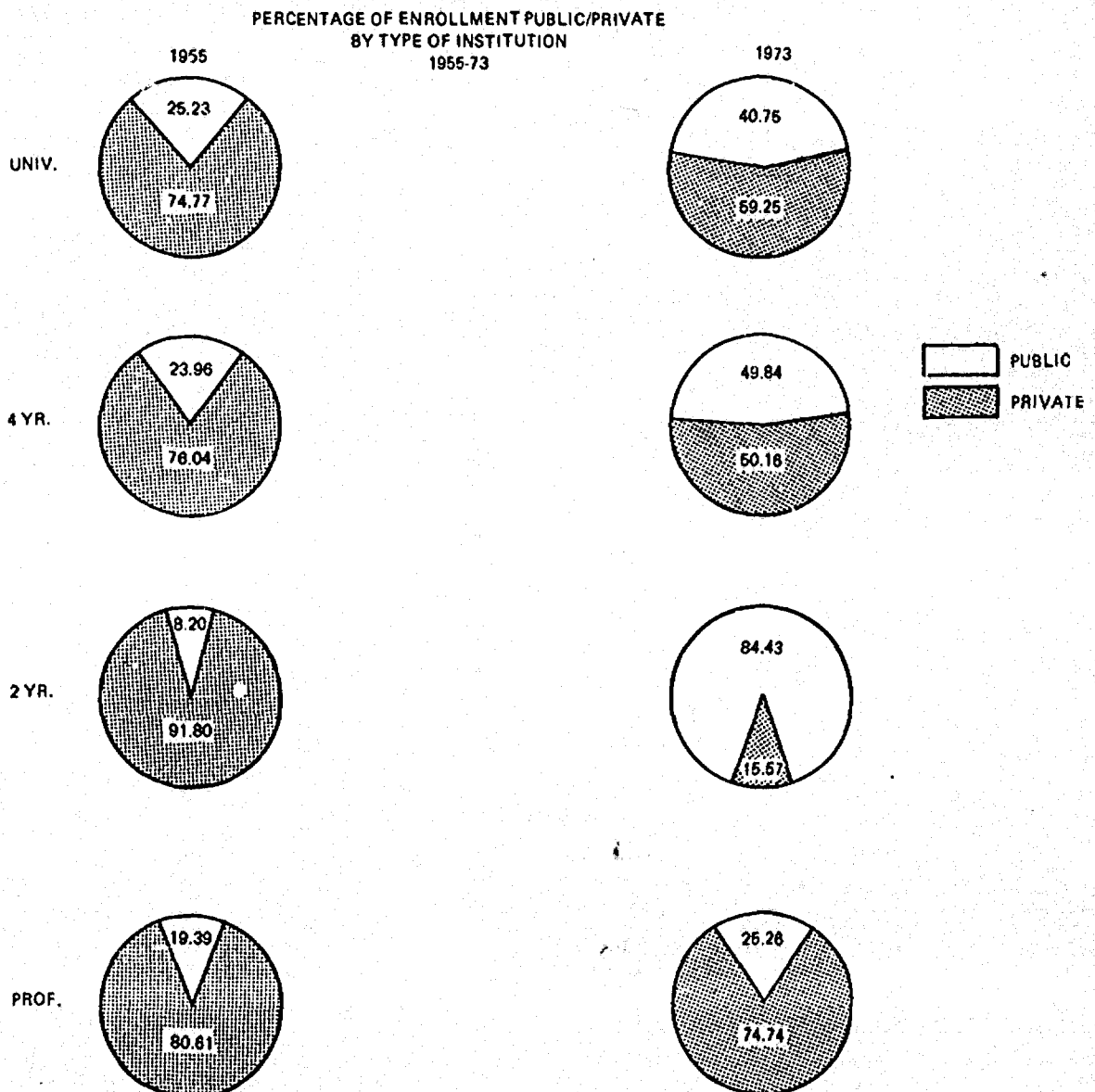
NUMBER OF INSTITUTIONS BY AUSPICES

	55	60	65	70	71	72	73
PUBLIC	42	45	63	87	90	91	93
PRIVATE	145	151	174	175	174	175	170
TOTAL	187	196	237	262	264	266	263

# DISTRIBUTION OF ENROLLMENT BY GENERAL TYPE AND AUSPICES

1955 - 1973

Even more dramatic has been the shift in enrollment from the private to the public sector of higher education. In all four major categories of institutional type, the percentage share of enrollment in public institutions has increased significantly in the past 18 years. This phenomenon has occurred, not by the reduction of enrollments of private institutions, but through a combination of the establishment of new institutions and the rapid expansion of existing public colleges and universities.



DISTRIBUTION OF ENROLLMENT BY AUSPICES

Public/Private

The product of these shifts in the percentage of public enrollments within all four general categories of institutions is reflected in the distribution of total enrollment between the public and private sector. Enrollment within the public sector of higher education gradually increased as a percentage of total enrollment to a point in 1972 where it surpassed the private sector. That majority continued to grow in this academic year, although by only two-tenths of one percent.

PERCENTAGE OF TOTAL ENROLLMENT  
PUBLIC AND PRIVATE - 1955-73

	PUBLIC	PRIVATE
1955	23.60	76.40
1960	27.69	72.31
1965	36.32	63.68
1970	48.06	51.94
1971	49.93	50.07
1972	50.72	49.28
1973	50.93	49.07

CURRENT DISTRIBUTION OF INSTITUTIONS BY  
CARNEGIE CLASSIFICATION IN THE  
SIX NEW ENGLAND STATES

## INSTITUTIONAL GROWTH AND CHANGE BY TYPE

### THE CARNEGIE CLASSIFICATION

To refine the analysis and distinguish between auspices and type of institution, the 263 institutions of higher education enumerated in this report have been classified by the nine major categories of the Carnegie Commission's A Classification of Institutions of Higher Education and four general types adapted from the Carnegie classification.

The nine major categories and four general types of institutions adapted from the Carnegie classification are as follows:

#### Universities

Research Universities I

Research Universities II

Doctoral Granting Universities I and II

#### Four Year Colleges

Comprehensive Universities and Colleges I

Comprehensive Universities and Colleges II

Liberal Arts Colleges I

Liberal Arts Colleges II

#### Two Year Colleges and Institutes

All Two Year Colleges and Institutes

#### Professional and Specialized Institutes

A composite of professional graduate schools and specialized institutes.

Detailed definitions of the categories and the adaptation made of the Carnegie classification for this report are provided in Appendix I.



Currently, Two Year Colleges and Institutes dominate in the total number of institutions in the region. Professional and Specialized Institutes make up the next largest group. This latter type is, however, a composite category made up primarily of small colleges dedicated to religious training, vocational-technical institutes, business schools and specialized graduate schools. It therefore, constitutes a miscellaneous category more than an explicit type. Liberal Arts Colleges II, the larger Comprehensive University and Colleges I and Liberal Arts Colleges I follow in order by the total number represented in the region. The ranking changes somewhat, however, within states and between public and private institutions.

NUMBER OF INSTITUTIONS BY TYPE IN NEW ENGLAND 1973-74

	<u>Conn.</u>	<u>Maine</u>	<u>Mass.</u>	<u>N. H.</u>	<u>R. I.</u>	<u>Vt.</u>	<u>N. E.</u>
UNIVERSITIES	2	1	9	2	2	1	17
Research Univ. I	1	-	2	-	-	-	3
Research Univ. II	1	-	4	-	1	-	6
Doct. Granting I & II	-	1	3	2	1	1	8
FOUR YEAR COLLEGES	16	15	40	12	7	15	105
Comp. Univ. & Coll. I	8	1	11	2	3	-	25
Comp. Univ. & Coll. II	2	2	6	-	-	2	12
Liberal Arts Coll. I	4	3	11	-	-	4	22
Liberal Arts Coll. II	2	9	12	10	4	9	46
TWO YEAR COLL. & INSTITUTES	24	6	41	14	1	6	92
PROF. & SPEC. INSTITUTES	9	4	29	3	4	-	49
TOTALS	51	26	119	31	14	22	263

Private colleges and universities represent 65% of the region's institutions. The State of Connecticut alone among the six New England States has a greater number of public institutions of higher education. This is occasioned by the significantly larger number of two year public colleges in that state.

Within the private sector, Liberal Arts Colleges II represent the largest single type followed by Two Year Colleges and Institutes. The Professional and Specialized Institutes which we have noted as representing a miscellaneous category is primarily private by auspices and dominated by religious training institutes, business colleges and graduate institutes. In only two categories of institutions does the public sector predominate within the region - Comprehensive Universities and Colleges II and Two Year Colleges and Institutes.

NUMBER OF INSTITUTIONS BY TYPE IN NEW ENGLAND 1973-74

	Public/Private						
	<u>Conn.</u>	<u>Maine</u>	<u>Mass.</u>	<u>N. H.</u>	<u>R. I.</u>	<u>Vt.</u>	<u>N. E.</u>
UNIVERSITIES	1/1	1/-	1/8	1/1	1/1	1/-	6/11
Research Univ. I	-/1	-/-	-/2	-/-	-/-	-/-	-/3
Research Univ. II	1/-	-/-	1/3	-/-	-/1	-/-	2/4
Doct. Granting I & II	-/-	1/-	-/3	1/1	1/-	1/-	4/4
FOUR YEAR COLLEGES	6/10	5/10	11/29	2/10	1/6	3/12	28/77
Comp. Univ. & Coll. I	2/6	1/-	6/5	2/-	1/2	-/-	12/13
Comp. Univ. & Coll. II	2/-	2/-	4/2	-/-	-/-	1/1	9/3
Liberal Arts Coll. I	-/4	-/3	-/11	-/-	-/-	-/4	-/22
Liberal Arts Coll. II	2/-	2/7	1/11	-/10	-/4	2/7	7/39
TWO YEAR COLL. & INSTITUTES	21/3	5/1	18/23	7/7	1/-	2/4	54/38
PROF. & SPEC. INSTITUTES	1/8	1/3	3/26	-/3	-/4	-/-	5/44
PUBLIC/PRIVATE TOTALS	29/22	12/14	33/86	10/21	3/11	6/16	93/170
TOTAL	51	26	119	31	14	22	263

**GROWTH AND DISTRIBUTION OF ENROLLMENT**

**BY TYPE**

## GROWTH RATE BY TYPE OF INSTITUTION

While the growth in the number of public institutions has been significantly higher than that of the private, and major shifts have taken place in the proportion of students attending public colleges and universities, similar but nonetheless dramatic changes have been taking place in the type of institution students attend.

The growth rate of the universities has been consistently lower than that of total enrollment in the region as a whole. Within the University category, Research I and Doctoral Granting I and II institutions experienced absolute declines between 1970 and 1971. Only in the last three years have the Four Year Colleges and Universities begun to fall behind the regional growth pattern. As would be expected, Two Year Colleges growth rates have been consistently high and the Professional and Specialized Institutes have experienced inconsistent but appreciable growth as a class.

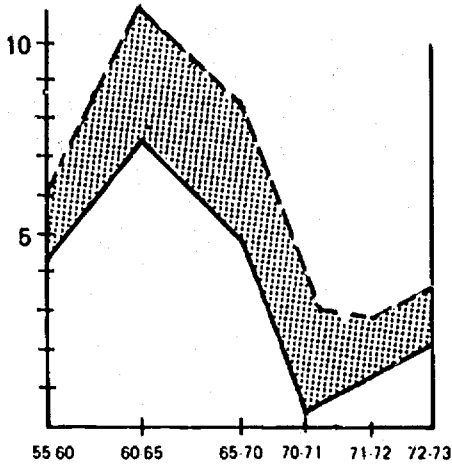
### ANNUAL GROWTH RATE BY TYPE 1955-1973<sup>1</sup>

	55-60	60-65	65-70	70-71	71-72	72-73
Universities	4.44	7.26	5.01	0.57	1.49	2.35
Research Univ. I	2.26	2.08	3.21	(-0.08)	1.96	4.86
Research Univ. II	2.63	5.57	6.00	4.30	0.97	1.22
Doctoral Granting I & II	7.99	11.66	4.97	(-2.08)	1.75	2.36
Four Year Colleges	9.25	13.13	9.00	3.07	2.95	2.70
Comp. Univ. & Coll. I	11.15	15.07	9.76	2.86	0.67	3.82
Comp. Univ. & Coll. II	17.23	18.38	13.43	1.84	5.58	2.25
Liberal Arts Coll. I	2.23	4.44	2.71	5.03	2.29	1.09
Liberal Arts Coll. II	11.42	14.93	8.31	3.73	7.32	1.22
Two Year Coll. & Insts.	7.77	34.51	30.95	6.66	7.69	5.22
Prof. & Spec. Insts.	15.98	8.46	4.65	10.17	1.46	13.78
Average all types	6.94	10.96	8.94	3.13	3.10	3.72

<sup>1</sup>Data for five year periods between 1955 & 1970 represent average annual growth rates.

ANNUAL GROWTH RATE  
BY GENERAL TYPE COMPARED WITH  
GROWTH RATES OF TOTAL ENROLLMENT

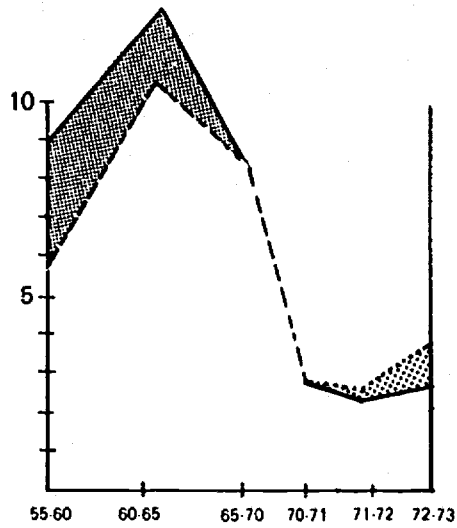
UNIV



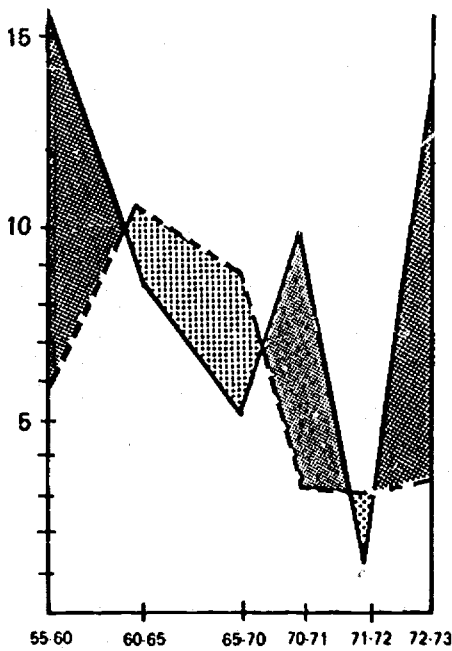
Key

- = Specific Type is lower than Ave. All Type
- = Specific Type is higher than Ave. All Type

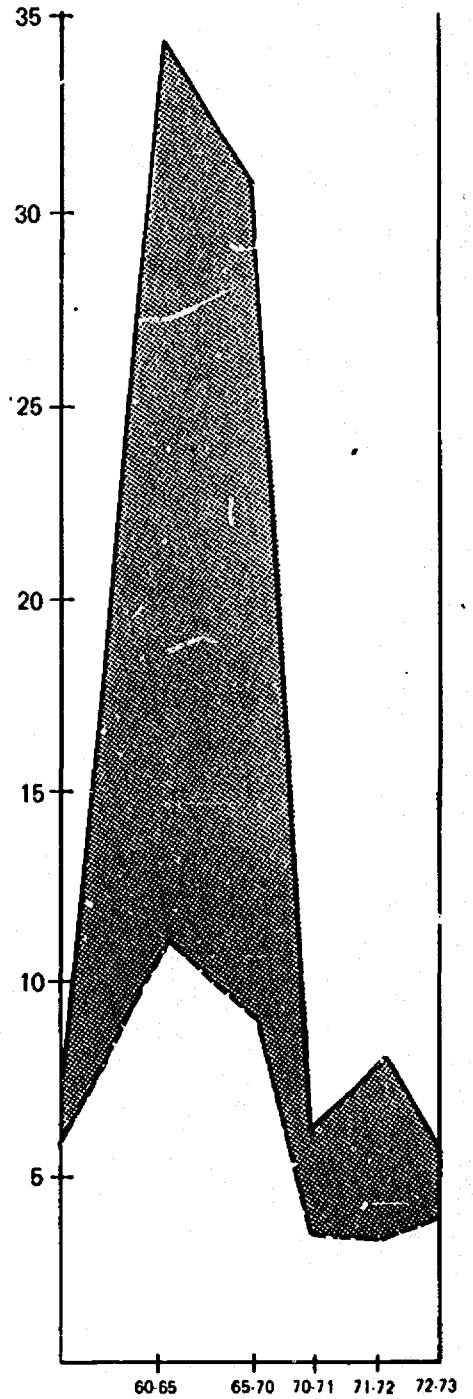
4 YR



PROF & SP



2 YR



## DISTRIBUTION OF ENROLLMENT BY TYPE OF INSTITUTION

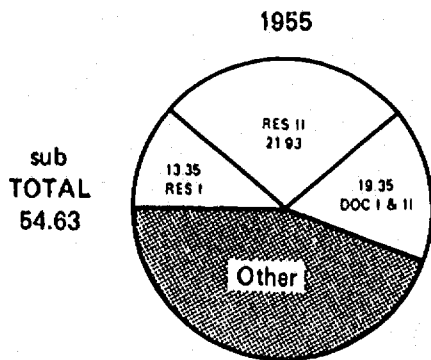
The differential growth rates among institutions have had their effect on the proportion of the total student population which the various types of institutions enjoy. Change would naturally be expected with the expansion of access provided and accompanying enrollment surge experienced by the low tuition public two year sector.

In 1955, the largest proportion of students were enrolled in Research University II institutions, and Universities as a general category, enrolled over 54% of the region's students. In the current academic year, Comprehensive Colleges and Universities I, enroll the largest proportion of students and the Four Year Colleges category encompasses the largest percentage of students with a 39% share of the market. Over the past 18 years, all three university types declined in the percentage of the market they enrolled. Among the Four Year Colleges, only the Liberal Arts Colleges I experienced a decline. Two Year Colleges and Professional and Specialized Institutes both experienced an increase in the percentage of the total student market they enroll.

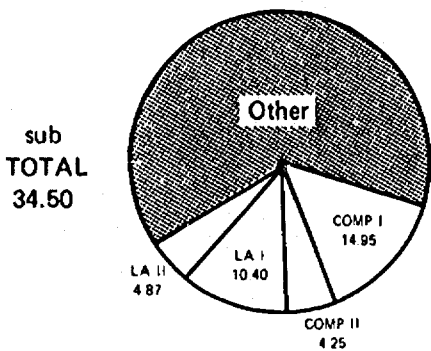
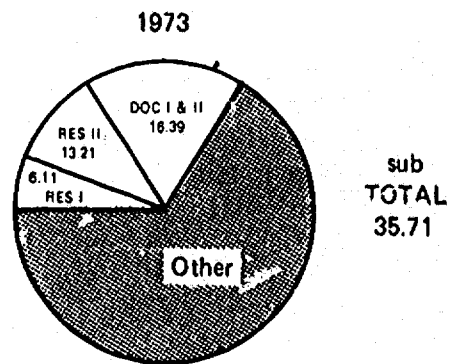
### PERCENTAGE OF ENROLLMENT BY TYPE (Market Share)

	55	60	65	70	71	72	73
University	54.63	49.55	43.63	37.70	36.76	36.19	35.71
Research Univ. I	13.35	11.03	7.87	6.31	6.11	6.05	6.11
Research Univ. II	21.93	18.42	15.21	13.66	13.82	13.53	13.21
Doctoral Granting I & II	19.35	20.10	20.55	17.73	16.83	16.61	16.39
Four Year Colleges	34.50	37.46	40.09	40.16	40.14	40.08	39.68
Comp. Univ. & Coll. I	14.98	17.33	19.62	20.17	20.12	19.64	19.66
Comp. Univ. & Coll. II	4.25	5.87	7.28	8.41	8.30	8.50	8.38
Liberal Arts Coll. I	10.40	8.58	6.78	5.31	5.41	5.37	5.23
Liberal Arts Coll. II	4.87	5.68	6.41	6.27	6.31	6.57	6.41
Two Year Coll. & Insts.	5.01	5.17	9.09	16.01	16.56	17.30	17.55
Prof. & Spec. Insts.	5.86	7.82	7.19	6.12	6.54	6.43	7.06
<b>TOTAL</b>	<b>100.00</b>	<b>100.00</b>	<b>100.00</b>	<b>100.00</b>	<b>100.00</b>	<b>100.00</b>	<b>100.00</b>

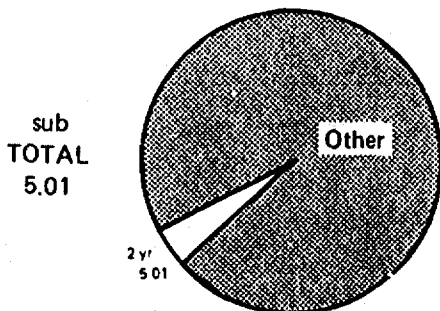
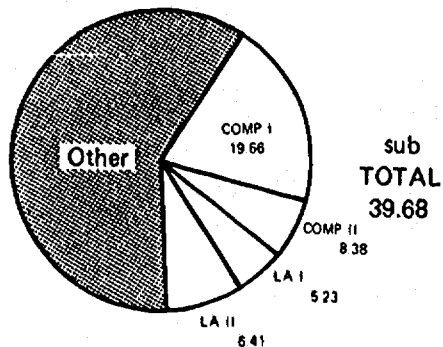
PERCENTAGE OF ENROLLMENT BY TYPE



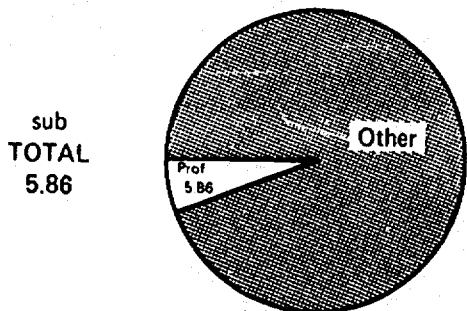
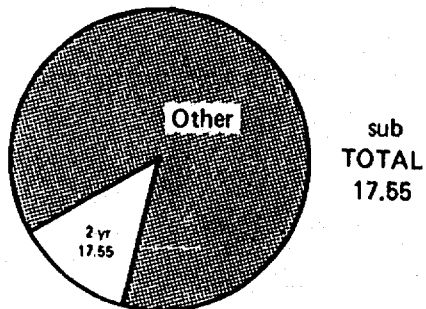
UNIV



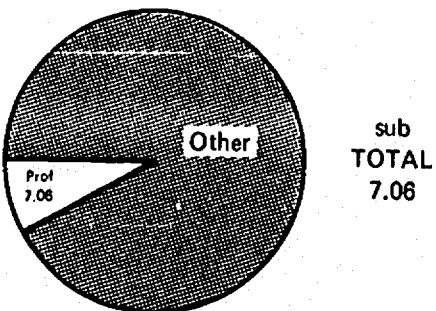
4 YR



2 YR



PROF



GROWTH AND CHANGE OF ENROLLMENT BY  
STUDENT CATEGORY AND INSTITUTIONAL TYPE

1970 - 1973



## GROWTH AND CHANGE BY STUDENT CATEGORY

To examine more thoroughly the immediate picture within the institutions of higher education of the region, five categories of students have been distinguished for analysis, first-time, undergraduate, first professional, graduate and non-degree students. Specific definitions of these categories are provided in Appendix II.

The percentage of total enrollment each category of student enjoyed has, over the past four years evidenced perceptible but often sporadic shifts. Undergraduates remain the dominant factor in the higher education system representing over 78% of the region's enrollment. Undergraduate enrollment, has declined from a high of over 81% of total enrollment in 1970 to its current share of 78.36%. Academic year 1972-73 was the only year in four that undergraduate enrollment increased its share of the total student enrollment in the region. First professional enrollments have risen perceptibly over the past four years while graduate enrollment has fluctuated without apparent pattern. Non-degree students, who represent to a great extent enrollments in the short-term vocational programs and non-traditional students within the traditional higher educational programs leading to a baccalaureate degree, increased as a percentage of total enrollment in the current academic year from 4.93% to 5.17%.

ENROLLMENT BY STUDENT CATEGORY

	1970	1971	1972	1973
Undergraduate <sup>1</sup>	458,447	455,920	474,547	486,292
First Prof.	10,707	10,684	13,407	14,674
Graduate	71,898	83,280	80,825	87,567
Non-degree	21,614	30,398	29,492	32,104
Total	562,666	580,284	598,271	620,538

PERCENTAGE SHARE OF TOTAL ENROLLMENT BY STUDENT CATEGORY

	1970	1971	1972	1973
Undergraduate <sup>1</sup>	81.48	78.57	79.32	78.36
First Prof.	1.90	1.84	2.24	2.36
Graduate	12.78	14.35	13.51	14.11
Non-degree	3.84	5.24	4.93	5.17
Total	100.00	100.00	100.00	100.00

<sup>1</sup>Extension and unclassified students have been included within the undergraduate category for years 1970-72. The federal government no longer reports data on extension students. Unclassified students are not of sufficient number to warrant treatment as a distinct category.

## FIRST-TIME STUDENT ENROLLMENT

### Degree and Non-Degree

The first-time student classification represents entering freshmen who have not previously attended any college or university. It also includes those freshmen enrolled during the previous summer session. First-time students, both degree and non-degree, have traditionally been significant as an indicator or barometer of enrollments in the immediate future. It is this function that has created and maintained a continued interest in the first-time student as a category.

First-time enrollment figures show that the growth rate of freshmen, both degree and non-degree, in 1973 was up significantly from previous years. As recorded between the fall of 1972 and the fall of 1973, the growth rate increased by 3.17% to 145,379 students. This increase was noticeably higher than the .90% average annual growth rate realized over the past three years.

However, the current growth rate among first-time students is slightly less than the 3.72% growth rate for all categories of students between 1972-73. The figures appear to indicate that the increase in total enrollments must be attributed to more than merely a rise in first-time enrollment. In fact, the increase in first-time students accounted for less than 25% of the actual increase in total enrollment.

Among the differing types of institutions, the largest increase in freshmen enrollments was experienced by Professional and Specialized Institutions, where the gain was 59.12%. This gain was significantly higher than the 17.77% three year average from 1970-73. However, professional institutions account for only 7.55% of the total first-time student enrollment.

The next highest first-time growth rate in 1973 was recorded by Comprehensive Universities and Colleges II, an increase of 22.84%, considerably higher than the 1970-1973 per year average of 1.52%. Here again, however, the small percentage (7.31%) of total first-time enrollment minimizes to a great degree the significance of this growth rate.

Two Year Colleges posted a gain of 4.65% between 1972 and 1973. Over the past three years, the average growth has been slightly lower at 3.63% per year.

Four of the nine types of institutions had negative growth for first-time students. The sharpest decline was experienced by Doctoral Granting Universities I and II where first-time enrollment decreased by 13.32% between 1972 and 1973.

**FIRST-TIME DEGREE AND NON-DEGREE ENROLLMENT  
GROWTH AND PERCENTAGE OF SHARE  
BY TYPE OF INSTITUTIONS**

	Current Growth Rate 1972-73	Average Annual 1970-73	Percentage Share of First-Time Enrollment 1973-74
Research Univ. I	(-1.76)	0.95	2.64
Research Univ. II	6.09	2.67	9.21
Doc. Grntg. I & II	(-13.32)	(-4.41)	13.42
Comp. Un. & Coll. I	8.80	(-2.73)	14.41
Comp. Un. & Coll. II	22.84	1.52	7.31
Liberal Arts Coll. I	(-3.44)	0.42	5.36
Liberal Arts Coll. II	(-8.00)	1.42	7.09
Two Year Coll. & Insts.	4.65	3.63	33.01
Prof. & Spec. Insts.	59.12	17.77	7.55
<b>Total</b>	<b>3.17</b>	<b>0.90</b>	<b>Total First-Time Enrollment 145,379</b>

## UNDERGRADUATE DEGREE CREDIT ENROLLMENT

The classification undergraduate consists of all students in either a bachelor's degree or associate degree program. This category also includes those students in terminal-occupational programs that result in formal recognition below the baccalaureate level.

Like first-time enrollment growth, the current undergraduate growth rate of 2.47% lagged the 3.72% growth rate among all categories of students. Included in the undergraduate figure are only degree credit students. Since the percentage of total non-degree students has increased, the total degree and non-degree undergraduate student growth rate may be slightly higher than the degree credit undergraduate figure.

In 1973, degree credit undergraduates comprised 78.36% of the total enrollment. Although the current rate of increase in undergraduate enrollment was only 2.47% undergraduate enrollment increases account for over 52% of the total enrollment increment in the region.

Of all the types of institutions, Professional and Specialized Institutions had the highest increase in undergraduate enrollment in 1973, 14.98%. As noted previously, however, Professional and Specialized Institutions account for only 7.27% of the total undergraduate enrollment in 1973.

Two types of institutions, Research Universities I and Two Year Colleges and Institutions followed in order of highest growth rates, at 5.57% and 5.41% respectively. The increase of Two Year Colleges and Institutions enrollment was more substantial because the growth rate is based on a higher percentage of total enrollment. Currently, 17.19% of total undergraduate enrollment is represented at Two Year Colleges and Institutions.

The smallest growth rates were recorded by Liberal Arts Colleges I and Doctoral Granting Universities I and II with 1.52% and 0.30% respectively.

Undergraduate enrollments actually decreased in 1973 at two types of institutions, Research Universities II and Comprehensive Universities and Colleges II, producing negative growth rates.

UNDERGRADUATE ENROLLMENT  
GROWTH AND PERCENTAGE SHARE BY TYPE

	Current Growth Rate 1972-73	Average Annual 1970-73	Percentage Share of Undergraduate Enrollment 1973-74
Research Univ. I	5.57%	3.03%	4.24%
Research Univ. II	(-1.66)	1.97	12.32
Doct. Grntg. I & II	0.30	(-0.33)	17.17
Comp. Un. & Coll. I	3.98	1.69	20.18
Comp. Un. & Coll. II	(-4.28)	(-2.33)	7.81
Liberal Arts Coll. I	1.52	2.61	6.36
Liberal Arts Coll. II	-	2.46	7.46
Two Year Coll. & Insts.	5.41	5.23	17.19
Prof. & Spec. Insts.	14.98	6.34	7.27
Total	2.47%	2.02%	Total Undergraduate Enrollment 486,292

FIRST PROFESSIONAL ENROLLMENT

First professional enrollment consists of students registered in either a professional school or professional program within a college or university. The core of this group is comprised of candidates in the fields of medicine,

law, theology, and other like professions. A first professional program must, however, encompass a minimum of two years of academic work completed before entrance and a minimum of six years to qualify for a degree.

As indicated below, first professionals are represented in only five categories of the Carnegie classification, the three university categories, Comprehensive Universities and Colleges I and Professional and Specialized Institutions. Research University II institutions registered the highest growth rate between academic years 1972-73 and 1973-74, 21.08%. This increase gave them 27.76% of the total first professional enrollment. The current year saw a decline in first professional enrollments among the Research University I classification. Their three year growth rate, however, has been exceptionally high.

Overall, first professional enrollments have been increasing at rates which exceed that of the current growth rates for total enrollment. In the total enrollment picture, however, first professional enrollments remain the smallest of all categories of students.

#### FIRST PROFESSIONAL

	Current Growth Rate 1972-73	Average Annual 1970-73	Percentage of First Prof. Enrollment 1973-74
Research Univ. I	(-1.15)	26.92	25.30
Research Univ. II	21.08	5.88	27.76
Doc. Grntg. I & II	17.17	4.44	10.74
Comp. Un. & Coll. I	4.70	15.09	19.72
Prof. & Spec. Insts.	13.47	24.57	16.48
Total	9.47	11.67	Total First Prof. Enrollment 14,674

## GRADUATE ENROLLMENT

Graduate students include all candidates who hold a bachelor's or first professional degree and are taking graduate level degree credit courses.

In the last few years, graduate enrollments have fluctuated as a percentage of total enrollment. Between academic years 1971-72 and 1972-73 graduate enrollment actually declined by 2.95% whereas, this year the number of graduate students increased by 8.34%. Overall, throughout the last three years, the annual average increase has been 7.31%, twice the average annual growth rate of the total enrollment.

Graduate student enrollments, as a percentage of total enrollment, while having increased in the current academic year to 14.11% have not equaled their 1971 level of 14.35%. It is notable, however, that the combined enrollments of graduate and first professional students account for 16.47% of total enrollment in 1973-74. This is the highest concentration of students enrolled in programs leading to postbaccalaureate degrees in the past four years.

### GRADUATE

	Current Growth Rate 1972-73	Average Annual 1970-73	Percentage of Total Graduate Enrollment 1973
Research Univ. I	5.52%	(-2.19)%	15.50%
Research Univ. II	2.04	(-0.13)	19.19
Doct. Grntg. I & II	8.64	8.51	17.28
Comp. Un. & Coll. I	3.31	5.40	23.28
Comp. Un. U Coll. II	22.00	36.90	15.45
Liberal Arts Coll. I	0.71	8.85	1.78
Liberal Arts Coll. II	20.49	25.05	2.85
Two Year Coll. & Insts.	-	-	-
Prof. & Spec. Insts.	10.93	25.04	4.67
Total	8.34%	7.31%	Total Graduate Enrollment 87,567



## NON-DEGREE CREDIT ENROLLMENT

Non-degree credit enrollment as indicated previously represents to a great extent the non-traditional student within the higher educational system. For the greater part, non-degree students are registered in occupational programs of less than four years duration, non-credit extension programs, or regular courses within a curriculum leading to a baccalaureate degree without seeking credit toward the formal degree.

For a number of years the rise in non-degree credit students has been used as an indicator of the interest in vocationally oriented education or disaffection on the part of students with standard degree programs. There has, however, been no pattern strong enough to indicate a substantial trend.

Although the non-degree credit student category has experienced a three year overall growth rate of 16.18% and a current growth rate of 8.86%, it's current market share of total enrollment represents only 5.17%. This, however, remains lower than the 5.24% of total enrollment the non-degree credit student category represented in 1971-72.

Currently, the largest percentage of non-degree credit students are enrolled within Two Year Colleges and Institutions. Professional and Specialized Institutes account for the second largest percentage of total non-degree enrollment.

With the exception of the two year segment, growth rates indicated below are artificially inflated due to the insignificant numbers of students within many of the categories.

NON-DEGREE ENROLLMENT

	Current Growth Rate 1972-73	Average Annual 1970-73	Percentage of Non- Degree Enrollment 1973
Research Univ. I	-	-	-
Research Univ. II	260.83%	161.44%	2.44%
Doct. Grntg. I & II	76.17	(-0.86)	4.82
Comp. Un. & Coll. I	(-7.99)	1.452	1.87
Comp. Un. & Coll. II	254.41	439.21	1.50
Liberal Arts Coll. I	(-97.64)	-	-
Liberal Arts Coll. II	(-28.59)	42.90	3.13
Two Year Coll. & Insts.	4.61	14.35	78.83
Prof. & Spec. Insts.	25.95	35.41	7.41
Total	8.86%	16.18%	Total Non-Degree Enrollment 32,104

## APPENDICES

## APPENDIX I

### THE CARNEGIE CLASSIFICATION

For a number of years, policy makers and researchers in higher education have become increasingly concerned with the development of more adequate structures for the compilation, analysis and reporting of data on institutions of higher education. Among the major areas of concern has been the creation of an improved classification schema more sensitive to differences among institutions than the traditional threefold classification used in reporting federal data.

In 1970 the Carnegie Commission, in an effort to improve the analytic capabilities of the Commission's work, developed a fivefold classification schema encompassing thirteen subcategories of institutions. The Carnegie Classification is more useful for purposes of analysis than existing classifications and offers the additional advantages of national distribution and recognition.

In an effort to avoid an all too common pattern in education of establishing competitive taxonomies, and advance the movement toward a nationally accepted system, the New England Board of Higher Education has this year adopted the Carnegie Commission Classification in reporting information on colleges and universities in the region.

We hope this will offer further advantages to policy planners and decision makers in higher education by encouraging greater sensitivity in the analysis of data on the colleges and universities of the region.

## CARNEGIE CLASSIFICATION OF INSTITUTIONS OF HIGHER EDUCATION

### 1. Doctoral Granting Universities

- 1.1. Research Universities I - The 50 leading universities in receipt of federal financial support for academic science in two of the three academic years 1968 through 1970 provided at least 50 doctoral degrees were awarded by that institution in the academic year 1970-71.
- 1.2. Research Universities II - Universities included among the 100 leading institutions in receipt of federal financial support for academic science in the academic years cited above, awarding a minimum of 50 doctoral degrees or were among the 50 institutions granting the largest number of doctorates (plus M.D.'s) in the ten year period from 1960-70.
- 1.3. Doctoral Granting Universities I - Institutions awarding 40 or more doctorates in 1969-70 or receiving \$3 million in total federal support in either 1969-70 or 1970-71. At least 20 doctorates had to be awarded by an institution to be included in this category.
- 1.4. Doctoral Granting Universities II - Institutions awarding at least ten doctoral degrees in 1969-70 or in new doctoral granting institutions expected to increase the number of doctoral degrees awarded in the immediate future.

## 2. Comprehensive Universities and Colleges

2.1. Comprehensive Universities and Colleges I - Institutions that offered a liberal arts program, as well as other programs such as engineering and business administration. While many offered master's degrees, all institutions in this classification lacked doctoral programs, or had extremely limited doctoral programs. Institutions in this classification enrolled at least 2,000 students in 1970 and had at least two professional or occupational programs.

2.2. Comprehensive Universities and Colleges II - Includes colleges offering a liberal arts program and at least one professional or occupational program. Private institutions with fewer than 1,500 students, and public institutions with fewer than 1,000 students in 1970 are not included in this classification.

## 3. Liberal Arts Colleges

3.1. Liberal Arts Colleges I - These colleges scored five or above on Astin's selectivity index or they were included among the 200 leading baccalaureate granting institutions on the basis of their graduates receiving doctorates at 40 leading doctoral granting institutions from 1920 to 1966. A number of institutions in this classification while having modest occupational or professional programs have historically been recognized as strong liberal arts institutions and within the liberal arts tradition.

3.2. Liberal Arts Colleges II - These institutions include all the liberal arts colleges not meeting criteria for inclusion under Liberal Arts Colleges I.

4. Two Year Colleges and Institutes

5. Professional Schools and Other Specialized Institutions

5.1. Theological seminaries, bible colleges and other institutions offering degrees in religion.

5.2. Medical schools and medical centers. In the Carnegie taxonomy those colleges or schools of medicine that are listed as separate campuses are included here.

5.3. Other separate health professional schools.

5.4. Schools of engineering and technology.

5.5. Schools of business and management.

5.6. Schools of art, music and design.

5.7. Schools of law.

5.8. Teachers' colleges.

5.9. Other specialized institutions - includes graduate centers, maritime academies, military institutes and miscellaneous.

It should be noted that an institutions' placement within a given category and subcategory of the above taxonomy may in light of yearly change appear quite arbitrary. As institutions increase enrollments, offer more diversified

programs, add graduate and professional schools, changes will be inevitably necessary. These realities, however, do not mitigate the advantages of reporting data on institutions of higher education under a classification schema of this sort. Where evidence is available that particular institutions have been inadvertently misclassified, or recent changes in the nature of their offerings would place them in another classification of the taxonomy, adjustments will be made in future enrollment reports.

In our appropriation of the Carnegie classification of institutions of higher education in New England, the subcategories of Doctoral Granting Institutions I and II have been treated as one. The nine subcategories established by Carnegie under Professional Schools and Other Specialized Institutions have similarly been treated as one for the creation of meaningful categories. This procedure seemed most appropriate in the instance of New England data to avoid many of the subcategories reflecting information on only one or two institutions. This problem could not be avoided, however, in reporting state figures without destroying the entire taxonomy.

In an effort to maintain continuity with previous enrollment reports of the Board, a generalized fourfold categorization of institutions has been included in the summary data provided throughout the report. The traditional distinctions of Universities, Four Year Colleges and Two Year Colleges has been maintained. However, only those institutions which should under the Carnegie taxonomy be included under Research Universities I, II and Doctoral Granting Universities I and II are included in the general category - Universities. All other institutions designated by the Carnegie classification as Comprehensive Universities and Colleges I, II and Liberal Arts Colleges I and II, because of their major emphasis on undergraduate education and lack of



doctoral degree programs, have been considered as Four Year Colleges under the more generalized schema. Two Year Colleges and Institutes remains essentially the same. A fourth category, Professional Schools and Other Specialized Institutions, under the Carnegie taxonomy has been maintained in the reporting of more generalized data. Whereas previously, many of the institutions in New England which would normally be included under this category were reported under the threefold classification of Universities, Four Year Colleges and Two Year Colleges, the unique characteristics of these institutions necessitate their separation from the standardized reporting categories and the creation of a fourth grouping of institutions in the presentation of more generalized aggregations of data.

TAXONOMY OF ENROLLMENT REPORT

<u>General Categories Used in Federal Reporting</u>	<u>Carnegie Classifications</u>	<u>NEBHE Consolidation of Carnegie Classification</u>	<u>New General Reporting Categories Based on Carnegie Classification</u>
Universities	Research University I Research University II	Research University I Research University II	Universities
Four Year Colleges	Doctoral Granting Universities I Doctoral Granting Universities II	Doctoral Granting Universities I & II	
Two Year Colleges	Comprehensive Universities and Colleges I Comprehensive Universities and Colleges II Liberal Arts Colleges I Liberal Arts Colleges II	Comprehensive Universities and Colleges I Comprehensive Universities and Colleges II Liberal Arts Colleges I Liberal Arts Colleges II	Four Year Colleges
	Two Year Colleges and Institutes	Two Year Colleges and Institutes	Two Year Colleges and Institutes
	Professional Schools and Other Specialized Institutions Theological seminaries, Bible colleges, and other institutions offering degrees in religion Medical schools and medical centers Other separate health professional schools Schools of engineering and technology Schools of business and management Schools of art, music and design Schools of law Teachers' colleges Other specialized institutions including graduate centers, maritime academies, military institutes and miscellaneous	Professional Schools and Other Specialized Institutions Sub-categories aggregated	Professional and Specialized Institutions

## APPENDIX II

### DEFINITIONS

**FIRST-TIME STUDENTS** - Entering freshmen who have not previously attended any college. Included are students who attended college for the first time in the summer of 1973.

**UNDERGRADUATES** - In four year institutions, includes freshmen and sophomores in bachelor's degree programs. In two year institutions, includes students in associate degree programs. Also includes, in all levels of institutions, students in terminal-occupational programs of one, two, or three years that result in formal recognition below the baccalaureate. Students who have completed the sophomore year and typically are enrolled in a four or five year bachelor's degree program are also included in this category.

**FIRST-PROFESSIONAL STUDENTS** - Students enrolled in a professional school or program which required at least two academic years of college work for entrance and a total of at least six years for a degree. This category typically includes students in fields such as medicine, law or theology.

**GRADUATE STUDENTS** - Students who hold the bachelor's or first-professional degree, or equivalent, and are taking work at the graduate level.

**DEGREE-CREDIT PROGRAMS** - Any work creditable toward a bachelor's degree at four year institutions. In two year institutions, those programs from which the credits earned are transferable to a bachelor's degree program.

**NON-DEGREE CREDIT** - Organized occupational curriculums of less than four years, primarily in the vocational and technical fields, not chiefly creditable toward a bachelor's degree. Normally non-degree credit is terminal and results in formal recognition such as a certificate or diploma.

APPENDIX III

1955 - 1973

TOTAL ENROLLMENT BY REGION, STATE AND  
TYPE OF INSTITUTION

-

TOTAL PUBLIC ENROLLMENT BY REGION, STATE AND  
TYPE OF INSTITUTION

-

TOTAL PRIVATE ENROLLMENT BY REGION, STATE AND  
TYPE OF INSTITUTION

NEW ENGLAND

TOTAL ENROLLMENT BY CARNEGIE CLASSIFICATION

	<u>1955</u>	<u>1960</u>	<u>1965</u>	<u>1970</u>	<u>1971</u>	<u>1972</u>	<u>1973</u>
Research Univ. I	24,893	27,707	30,585	35,502	35,472	36,168	37,924
Research Univ. II	40,879	46,261	59,137	76,884	80,187	80,966	81,951
Doctoral Granting I & II	36,067	50,479	79,908	99,752	97,682	99,388	101,736
Comp. Univ. & Coll. I	27,933	43,505	76,283	113,498	116,739	117,518	122,013
Comp. Univ. & Coll. II	7,921	14,746	28,294	47,297	48,166	50,854	52,000
Liberal Arts Coll. I	19,393	21,554	26,344	29,909	31,414	32,134	32,483
Liberal Arts Coll. II	9,083	14,271	24,931	35,293	36,609	39,288	39,769
Two Year Coll. & Insts.	9,347	12,976	35,364	90,091	96,091	103,479	108,883
Prof. & Spec. Insts.	10,913	19,637	27,945	34,440	37,924	38,476	43,777
<b>TOTAL</b>	<b>186,429</b>	<b>251,136</b>	<b>388,791</b>	<b>562,666</b>	<b>580,284</b>	<b>598,271</b>	<b>620,538</b>

CONNECTICUT

TOTAL ENROLLMENT BY CARNEGIE CLASSIFICATION

	<u>1955</u>	<u>1960</u>	<u>1965</u>	<u>1970</u>	<u>1971</u>	<u>1972</u>	<u>1973</u>
Research Univ. I	7,456	8,214	8,575	8,927	8,912	9,012	9,444
Research Univ. II	9,721	11,143	15,223	16,628	17,613	17,582	18,103
Doctoral Granting I & II	0	0	0	0	0	0	0
Comp. Univ. & Coll. I	12,858	20,848	37,171	47,824	48,294	48,350	49,332
Comp. Univ. & Coll. II	2,521	4,233	7,946	14,970	15,528	15,523	15,324
Liberal Arts Coll. I	3,330	3,832	5,271	6,099	6,339	6,424	6,728
Liberal Arts Coll. II	543	897	1,255	1,351	1,357	1,229	1,246
Two Year Coll. & Insts.	878	1,729	6,459	27,643	29,947	31,637	33,766
Prof. & Spec. Insts.	1,902	2,615	2,710	2,738	2,339	2,312	2,342
TOTAL	39,209	53,511	84,610	126,180	130,329	132,069	136,285

MAINE

TOTAL ENROLLMENT BY CARNEGIE CLASSIFICATION

	<u>1955</u>	<u>1960</u>	<u>1965</u>	<u>1970</u>	<u>1971</u>	<u>1972</u>	<u>1973</u>
Research Univ. I	0	0	0	0	0	0	0
Reserach Univ. II	0	0	0	0	0	0	0
Doctoral Granting I & II	3,451	5,867	11,755	10,843	9,156	9,668	10,042
Comp. Univ. & Coll. I	582	681	1,358	8,232	6,107	7,072	7,873
Comp. Univ. & Coll. II	459	726	966	2,829	2,794	3,024	3,301
Liberal Arts Coll. I	2,722	2,847	3,241	3,669	3,832	4,047	4,080
Liberal Arts Coll. II	780	1,743	3,391	4,420	4,432	4,444	4,342
Two Year Coll. & Insts.	200	0	490	5,427	4,832	5,289	5,018
Prof. & Spec. Insts.	915	939	2,255	2,137	2,078	2,143	1,869
TOTAL	9,109	12,803	23,456	37,557	33,231	35,687	36,525

MASSACHUSETTS

TOTAL ENROLLMENT BY CARNEGIE CLASSIFICATION

	<u>1955</u>	<u>1960</u>	<u>1965</u>	<u>1970</u>	<u>1971</u>	<u>1972</u>	<u>1973</u>
Research Univ. I	17,437	19,493	22,010	26,575	26,560	27,156	28,480
Research Univ. II	27,588	31,015	39,106	54,497	56,785	57,092	57,324
Doctoral Granting I & II	21,091	27,431	41,184	50,148	48,916	49,032	49,629
Comp. Univ. & Coll. I	9,507	14,951	26,605	40,592	43,872	43,257	45,883
Comp. Univ. & Coll. II	4,035	8,539	17,341	26,794	26,886	29,128	30,076
Liberal Arts Coll. I	11,600	13,003	15,343	16,394	16,927	17,075	17,024
Liberal Arts Coll. II	3,399	5,246	9,211	13,767	14,395	16,225	17,397
Two Year Coll. & Insts.	7,270	9,885	23,142	47,100	51,221	55,491	57,405
Prof. & Spec. Insts.	6,073	13,199	17,136	22,103	25,388	25,728	28,125
TOTAL	108,008	142,762	211,078	297,970	310,950	320,184	331,343



NEW HAMPSHIRE

TOTAL ENROLLMENT BY CARNEGIE CLASSIFICATION

	<u>1955</u>	<u>1960</u>	<u>1965</u>	<u>1970</u>	<u>1971</u>	<u>1972</u>	<u>1973</u>
Research Univ. I	0	0	0	0	0	0	0
Research Univ. II	0	0	0	0	0	0	0
Doctoral Granting I & II	6,266	8,209	10,645	14,107	14,510	14,916	15,398
Comp. Univ. & Coll. I	1,210	1,782	3,374	5,178	5,474	5,294	5,046
Comp. Univ. & Coll. II	0	0	0	0	0	0	0
Liberal Arts Coll. I	0	0	0	0	0	0	0
Liberal Arts Coll. II	2,217	3,019	5,933	7,482	7,552	8,028	7,853
Two Year Coll. & Insts.	215	296	1,186	3,630	3,371	3,293	3,484
Prof. & Spec. Insts.	0	0	756	1,580	1,664	1,427	1,697
<b>TOTAL</b>	<b>9,902</b>	<b>13,306</b>	<b>21,894</b>	<b>31,977</b>	<b>32,571</b>	<b>32,958</b>	<b>33,478</b>

RHODE ISLAND

TOTAL ENROLLMENT BY CARNEGIE CLASSIFICATION

	<u>1955</u>	<u>1960</u>	<u>1965</u>	<u>1970</u>	<u>1971</u>	<u>1972</u>	<u>1973</u>
Research Univ. I	0	0	0	0	0	0	0
Research Univ. II	3,570	4,103	4,808	5,759	5,789	6,292	6,524
Doctoral Granting I & II	2,390	5,551	11,861	15,431	15,450	15,947	16,116
Comp. Univ. & Coll. I	3,776	5,243	7,775	11,672	12,992	13,545	13,879
Comp. Univ. & Coll. II	0	0	0	0	0	0	0
Liberal Arts Coll. I	0	0	0	0	0	0	0
Liberal Arts Coll. II	778	1,025	1,514	3,633	3,594	3,647	3,343
Two Year Coll. & Insts.	327	406	2,569	3,849	3,915	4,198	5,511
Prof. & Spec. Insts.	2,023	2,884	5,037	5,822	6,455	6,866	9,746
TOTAL	12,864	19,212	33,564	46,166	48,295	50,495	55,119

VERMONT

TOTAL ENROLLMENT BY CARNEGIE CLASSIFICATION

	<u>1955</u>	<u>1960</u>	<u>1965</u>	<u>1970</u>	<u>1971</u>	<u>1972</u>	<u>1973</u>
Research Univ. I	0	0	0	0	0	0	0
Research Univ. II	0	0	0	0	0	0	0
Doctoral Granting I & II	2,869	3,421	4,463	9,223	9,650	9,825	10,551
Comp. Univ. & Coll. I	0	0	0	0	0	0	0
Comp. Univ. & Coll. II	906	1,248	2,041	2,704	2,958	3,179	3,299
Liberal Arts Coll. I	1,733	1,872	2,489	3,747	4,316	4,588	4,651
Liberal Arts Coll. II	1,372	2,341	3,627	4,640	5,179	5,715	5,588
Two Year Coll. & Insts.	457	660	1,518	2,442	2,805	3,571	3,699
Prof. & Spec. Insts.	0	0	51	60	0	0	0
TOTAL	7,337	9,542	14,189	22,816	24,908	26,878	27,788

NEW ENGLAND

TOTAL PUBLIC ENROLLMENT BY CARNEGIE CLASSIFICATION

	<u>1955</u>	<u>1960</u>	<u>1965</u>	<u>1970</u>	<u>1971</u>	<u>1972</u>	<u>1973</u>
Research Univ. I	0	0	0	0	0	0	0
Research Univ. II	13,724	17,323	24,842	37,351	40,793	41,779	42,336
Doctoral Granting I & II	11,969	19,868	35,036	45,676	44,783	46,361	47,961
Comp. Univ. & Coll. I	9,249	15,371	32,267	61,099	62,720	63,986	67,350
Comp. Univ. & Coll. II	5,730	11,703	23,901	41,493	42,572	44,972	45,896
Liberal Arts Coll. I	0	0	0	0	0	0	0
Liberal Arts Coll. II	434	768	2,597	6,945	7,913	8,764	9,481
Two Year Coll. & Insts.	766	1,764	16,334	68,883	80,816	87,572	91,935
Prof. & Spec. Insts.	2,116	2,743	6,221	8,997	10,115	10,009	11,057
TOTAL	43,988	69,540	141,198	270,444	289,712	303,443	316,016

CONNECTICUT

TOTAL PUBLIC ENROLLMENT BY CARNEGIE CLASSIFICATION

	<u>1955</u>	<u>1960</u>	<u>1965</u>	<u>1970</u>	<u>1971</u>	<u>1972</u>	<u>1973</u>
Research Univ. I	0	0	0	0	0	0	0
Research Univ. II	9,721	11,143	15,223	16,628	17,613	17,582	18,103
Doctoral Granting I & II	0	0	0	0	0	0	0
Comp. Univ. & Coll. I	2,750	4,258	9,241	16,585	17,080	16,919	17,448
Comp. Univ. & Coll. II	2,521	4,233	7,946	14,970	15,528	15,523	15,324
Liberal Arts Coll. I	0	0	0	0	0	0	0
Liberal Arts Coll. II	0	0	0	0	0	0	0
Two Year Coll. & Insts.	159 <sup>1</sup>	589 <sup>1</sup>	4,361 <sup>1</sup>	25,432	27,960	29,821	31,947
Prof. & Spec. Insts.	453	600	644	950	986	1,083	1,088
TOTAL	15,604	20,823	37,415	74,565	79,167	80,928	83,910

<sup>1</sup> Figures for two year campuses of the University of Connecticut at Hartford and Waterbury included under the University of Connecticut enrollment.

MAINE

TOTAL PUBLIC ENROLLMENT BY CARNEGIE CLASSIFICATION

	<u>1955</u>	<u>1960</u>	<u>1965</u>	<u>1970</u>	<u>1971</u>	<u>1972</u>	<u>1973</u>
Research Univ. I	0	0	0	0	0	0	0
Research Univ. II	0	0	0	0	0	0	0
Doctoral Granting I & II	3,451	5,867	11,755	10,843	9,156	9,668	10,042
Comp. Univ. & Coll. I	582	681	1,358	8,232	6,107	7,072	7,873
Comp. Univ. & Coll. II	459	726	966	2,829	2,794	3,024	3,301
Liberal Arts Coll. I	0	0	0	0	0	0	0
Liberal Arts Coll. II	161	290	526	973	1,153	1,201	1,267
Two Year Coll. & Insts.	0	0	490	5,151	4,540	5,045	4,736
Prof. & Spec. Insts.	204	319	490	534	388	467	484
TOTAL	4,857	7,883	15,585	28,562	23,138	26,477	27,703

MASSACHUSETTS

TOTAL PUBLIC ENROLLMENT BY CARNEGIE CLASSIFICATION

	<u>1955</u>	<u>1960</u>	<u>1965</u>	<u>1970</u>	<u>1971</u>	<u>1972</u>	<u>1973</u>
Research Univ. I	0	0	0	0	0	0	0
Research Univ. II	4,003	6,180	9,619	20,723	23,180	24,197	24,233
Doctoral Granting I & II	0	0	0	0	0	0	0
Comp. Univ. & Coll. I	3,141	6,447	14,037	24,589	26,525	26,497	28,621
Comp. Univ. & Coll. II	2,571	6,349	14,242	22,425	22,716	24,807	25,640
Liberal Arts Coll. I	0	0	0	0	0	0	0
Liberal Arts Coll. II	0	0	1,213	4,436	4,869	5,662	6,267
Two Year Coll. & Insts.	607	988	9,354	31,343	41,091	44,399	45,223
Prof. & Spec. Insts.	1,459	1,824	5,087	7,513	8,741	8,459	9,485
<b>TOTAL</b>	<b>11,781</b>	<b>21,808</b>	<b>53,552</b>	<b>111,029</b>	<b>127,122</b>	<b>134,021</b>	<b>139,469</b>

NEW HAMPSHIRE

TOTAL PUBLIC ENROLLMENT BY CARNEGIE CLASSIFICATION

	<u>1955</u>	<u>1960</u>	<u>1965</u>	<u>1970</u>	<u>1971</u>	<u>1972</u>	<u>1973</u>
Research Univ. I	0	0	0	0	0	0	0
Research Univ. II	0	0	0	0	0	0	0
Doctoral Granting I & II	3,259	5,029	6,957	10,179	10,527	10,921	11,252
Comp. Univ. & Coll. I	1,210	1,782	3,374	5,178	5,474	5,294	5,046
Comp. Univ. & Coll. II	0	0	0	0	0	0	0
Liberal Arts Coll. I	0	0	0	0	0	0	0
Liberal Arts Coll. II	0	0	0	0	0	0	0
Two Year Coll. & Insts.	0	0	641	2,581	2,426	2,434	2,490
Prof. & Spec. Insts.	0	0	0	0	0	0	0
<b>TOTAL</b>	<b>4,469</b>	<b>6,811</b>	<b>10,972</b>	<b>17,938</b>	<b>18,427</b>	<b>18,649</b>	<b>18,788</b>



RHODE ISLAND

TOTAL PUBLIC ENROLLMENT BY CARNEGIE CLASSIFICATION

	<u>1955</u>	<u>1960</u>	<u>1965</u>	<u>1970</u>	<u>1971</u>	<u>1972</u>	<u>1973</u>
Research Univ. I	0	0	0	0	0	0	0
Research Univ. II	0	0	0	0	0	0	0
Doctoral Granting I & II	2,390	5,551	11,861	15,431	15,450	15,947	16,116
Comp. Univ. & Coll. I	1,566	2,203	4,257	6,515	7,534	8,204	8,362
Comp. Univ. & Coll. II	0	0	0	0	0	0	0
Liberal Arts Coll. I	0	0	0	0	0	0	0
Liberal Arts Coll. II	0	0	0	0	0	0	0
Two Year Coll. & Insts.	0	0	1,186	3,581	3,743	4,198	5,511
Prof. & Spec. Insts.	0	0	0	0	0	0	0
<b>TOTAL</b>	<b>3,956</b>	<b>7,754</b>	<b>17,304</b>	<b>25,527</b>	<b>26,727</b>	<b>28,349</b>	<b>29,989</b>

VERMONT

TOTAL PUBLIC ENROLLMENT BY CARNEGIE CLASSIFICATION

	<u>1955</u>	<u>1960</u>	<u>1965</u>	<u>1970</u>	<u>1971</u>	<u>1972</u>	<u>1973</u>
Research Univ. I	0	0	0	0	0	0	0
Research Univ. II	0	0	0	0	0	0	0
Doctoral Granting I & II	2,869	3,421	4,463	9,223	9,650	9,825	10,551
Comp. Univ. & Coll. I	0	0	0	0	0	0	0
Comp. Univ. & Coll. II	179	375	747	1,269	1,534	1,618	1,631
Liberal Arts Coll. I	0	0	0	0	0	0	0
Liberal Arts Coll. II	273	478	858	1,536	1,891	1,901	1,947
Two Year Coll. & Insts.	0	187	302	795	1,056	1,675	2,028
Prof. & Spec. Insts.	0	0	0	0	0	0	0
TOTAL	3,321	4,461	6,370	12,823	14,131	15,019	16,157

NEW ENGLAND

TOTAL PRIVATE ENROLLMENT BY CARNEGIE CLASSIFICATION

	<u>1955</u>	<u>1960</u>	<u>1965</u>	<u>1970</u>	<u>1971</u>	<u>1972</u>	<u>1973</u>
Research Univ. I	24,893	27,707	30,585	35,502	35,472	36,168	37,924
Research Univ. II	27,155	28,938	34,295	39,533	39,394	39,187	39,615
Doctoral Granting I & II	24,098	30,611	44,872	54,076	52,899	53,027	53,775
Comp. Univ. & Coll. I	18,684	28,134	44,016	52,399	54,019	53,532	54,663
Comp. Univ. & Coll. II	2,191	3,043	4,393	5,804	5,594	5,882	6,104
Liberal Arts Coll. I	19,393	21,554	26,344	29,909	31,414	32,134	32,483
Liberal Arts Coll. II	8,649	13,503	22,334	28,348	28,696	30,524	30,288
Two Year Coll. & Insts.	8,581	11,212	19,030	21,208	15,275	15,907	16,948
Prof. & Spec. Insts.	8,797	16,894	21,724	25,443	27,809	28,467	32,722
TOTAL	142,441	181,596	247,593	292,222	290,572	294,828	304,522

CONNECTICUT

TOTAL PRIVATE ENROLLMENT BY CARNEGIE CLASSIFICATION

	<u>1955</u>	<u>1960</u>	<u>1965</u>	<u>1970</u>	<u>1971</u>	<u>1972</u>	<u>1973</u>
Research Univ. I	7,456	8,214	8,575	8,927	8,912	9,012	9,444
Research Univ. II	0	0	0	0	0	0	0
Doctoral Granting I & II	0	0	0	0	0	0	0
Comp. Univ. & Coll. I	10,108	16,590	27,930	31,239	31,214	31,431	31,884
Comp. Univ. & Coll. II	0	0	0	0	0	0	0
Liberal Arts Coll. I	3,330	3,832	5,271	6,099	6,339	6,424	6,728
Liberal Arts Coll. II	543	897	1,255	1,351	1,357	1,229	1,246
Two Year Coll. & Insts.	719	1,140	2,098	2,211	1,987	1,816	1,819
Prof. & Spec. Insts.	1,449	2,015	2,066	1,788	1,353	1,229	1,254
<b>TOTAL</b>	<b>23,605</b>	<b>32,688</b>	<b>47,195</b>	<b>51,615</b>	<b>51,162</b>	<b>51,141</b>	<b>52,375</b>

MAINE

TOTAL PRIVATE ENROLLMENT BY CARNEGIE CLASSIFICATION

	<u>1955</u>	<u>1960</u>	<u>1965</u>	<u>1970</u>	<u>1971</u>	<u>1972</u>	<u>1973</u>
Research Univ. I	0	0	0	0	0	0	0
Research Univ. II	0	0	0	0	0	0	0
Doctoral Granting I & II	0	0	0	0	0	0	0
Comp. Univ. & Coll. I	0	0	0	0	0	0	0
Comp. Univ. & Coll. II	0	0	0	0	0	0	0
Liberal Arts Coll. I	2,722	2,847	3,241	3,669	3,832	4,047	4,080
Liberal Arts Coll. II	619	1,453	2,865	3,447	3,279	3,243	3,075
Two Year Coll. & Insts.	200	0	0	276	292	244	282
Prof. & Spec. Insts.	711	620	1,765	1,603	1,690	1,676	1,385
TOTAL	4,252	4,920	7,871	8,995	9,093	9,210	8,822

MASSACHUSETTS

TOTAL PRIVATE ENROLLMENT BY CARNEGIE CLASSIFICATION

	<u>1955</u>	<u>1960</u>	<u>1965</u>	<u>1970</u>	<u>1971</u>	<u>1972</u>	<u>1973</u>
Research Univ. I	17,437	19,493	22,010	26,575	26,560	27,156	28,480
Research Univ. II	23,585	24,835	29,487	33,774	33,605	32,895	33,091
Doctoral Granting I & II	21,091	27,431	41,184	50,148	48,916	49,032	49,629
Comp. Univ. & Coll. I	6,366	8,504	12,568	16,003	17,347	16,760	17,262
Comp. Univ. & Coll. II	1,464	2,170	3,099	4,369	4,170	4,321	4,436
Liberal Arts Coll. I	11,608	13,003	15,343	16,394	16,927	17,075	17,024
Liberal Arts Coll. II	3,399	5,246	7,998	9,331	9,526	10,563	11,130
Two Year Coll. & Insts.	6,663	8,897	13,788	15,757	10,130	11,092	12,182
Prof. & Spec. Insts.	4,614	11,375	12,049	14,590	16,647	17,269	18,640
<b>TOTAL</b>	<b>96,227</b>	<b>120,954</b>	<b>157,526</b>	<b>186,941</b>	<b>183,828</b>	<b>186,163</b>	<b>191,874</b>

NEW HAMPSHIRE

TOTAL PRIVATE ENROLLMENT BY CARNEGIE CLASSIFICATION

	<u>1955</u>	<u>1960</u>	<u>1965</u>	<u>1970</u>	<u>1971</u>	<u>1972</u>	<u>1973</u>
Research Univ. I	0	0	0	0	0	0	0
Research Univ. II	0	0	0	0	0	0	0
Doctoral Granting I & II	3,007	3,180	3,688	3,928	3,983	3,995	4,146
Comp. Univ. & Coll. I	0	0	0	0	0	0	0
Comp. Univ. & Coll. II	0	0	0	0	0	0	0
Liberal Arts Coll. I	0	0	0	0	0	0	0
Liberal Arts Coll. II	2,211	3,019	5,933	7,482	7,552	8,028	7,853
Two Year Coll. & Insts.	215	296	545	1,049	945	859	994
Prof. & Spec. Insts.	0	0	756	1,580	1,664	1,427	1,697
TOTAL	5,433	6,455	10,922	14,039	14,144	14,309	14,690

RHODE ISLAND

TOTAL PRIVATE ENROLLMENT BY CARNEGIE CLASSIFICATION

	<u>1955</u>	<u>1960</u>	<u>1965</u>	<u>1970</u>	<u>1971</u>	<u>1972</u>	<u>1973</u>
Research Univ. I	0	0	0	0	0	0	0
Research Univ. II	3,570	4,103	4,808	5,759	5,789	6,292	6,524
Doctoral Granting I & II	0	0	0	0	0	0	0
Comp. Univ. & Coll. I	2,210	3,040	3,518	5,157	5,458	5,341	5,517
Comp. Univ. & Coll. II	0	0	0	0	0	0	0
Liberal Arts Coll. I	0	0	0	0	0	0	0
Liberal Arts Coll. II	778	1,025	1,514	3,633	3,694	3,647	3,343
Two Year Coll. & Insts.	327	406	1,383	268	172	0	0
Prof. & Spec. Insts.	2,023	2,884	5,037	5,822	6,455	6,866	9,746
<b>TOTAL</b>	<b>8,908</b>	<b>11,458</b>	<b>16,260</b>	<b>20,639</b>	<b>21,568</b>	<b>22,146</b>	<b>25,130</b>



VERMONT

TOTAL PRIVATE ENROLLMENT BY CARNEGIE CLASSIFICATION

	<u>1955</u>	<u>1960</u>	<u>1965</u>	<u>1970</u>	<u>1971</u>	<u>1972</u>	<u>1973</u>
Research Univ. I	0	0	0	0	0	0	0
Research Univ. II	0	0	0	0	0	0	0
Doctoral Granting I & II	0	0	0	0	0	0	0
Comp. Univ. & Coll. I	0	0	0	0	0	0	0
Comp. Univ. & Coll. II	727	873	1,294	1,435	1,424	1,561	1,668
Liberal Arts Coll. I	1,733	1,872	2,489	3,747	4,316	4,588	4,651
Liberal Arts Coll. II	1,099	1,863	2,769	3,104	3,288	3,814	3,641
Two Year Coll. & Insts.	457	473	1,216	1,647	1,749	1,896	1,671
Prof. & Spec. Insts.	0	0	51	60	0	0	0
<b>TOTAL</b>	<b>4,016</b>	<b>5,081</b>	<b>7,819</b>	<b>9,993</b>	<b>10,777</b>	<b>11,859</b>	<b>11,631</b>

## APPENDIX IV

### STUDENT ENROLLMENT IN NEW ENGLAND, FALL 1973

#### Key to Abbreviations in Institutional Data:

- C - College
- CC - Community College
- Inst. - Institute
- SC - State College
- Tech. - Technical
- U - University
- Voc. - Vocational
- N/A - not available

#### Carnegie Commission Classification:

- Res. I - Research Universities I
- Res. II - Research Universities II
- Doct. Grntg. - Doctoral Granting Universities I and II
- Comp. I - Comprehensive Universities and Colleges I
- Comp. II - Comprehensive Universities and Colleges II
- L.A. I - Liberal Arts Colleges I
- L.A. II - Liberal Arts Colleges II
- Two Year Coll. & Insts. - Two Year Colleges and Institutes
- Prof. & Spec. Insts. - Professional Schools and Other Specialized Institutions

Note: Unclassified Student data is included with Undergraduate, Degree Credit enrollment figures.

**APPENDIX V**  
**STUDENT ENROLLMENT IN NEW ENGLAND, FALL 1973**  
**BY INSTITUTION**

Institution	Total Enrollment Fall 1972	Total Enrollment Fall 1973	Degree Credit		Non-Degree	Degree Credit First-time Students	
			Under-graduate	Prof		Fall 1972	Fall 1973
<u>Connecticut - Public</u>							
<u>University</u>							
U. of Connecticut, (Res. II) Main Campus	17,582	18,103	13,149	957	131	2,301	2,368
<u>Four Year Colleges</u>							
Central Connecticut SC (Comp. I)	12,390	12,862	10,107	-	14	1,577	2,214
Eastern Connecticut SC (Comp. II)	2,879	2,827	2,384	-	-	538	613
Southern Connecticut SC (Comp. II)	12,644	12,497	8,104	-	-	1,823	2,184
Western Connecticut SC (Comp. I)	4,529	4,586	3,319	-	-	677	828
<u>Two Year Colleges</u>							
Asnuntuck CC	237	581	581	-	-	237	370
Greater Hartford CC	1,612	1,607	1,607	-	-	741	799
Hartford State Tech. College	1,623	1,902	1,494	-	408	362	441
Housatonic CC	2,447	2,742	2,734	-	8	673	810
Manchester CC	3,756	4,337	4,337	-	-	1,546	1,888
Mattabuck CC	2,231	2,572	2,322	-	250	935	841
Middlesex CC	1,615	1,864	1,864	-	-	842	1,099
Mohegan CC	1,235	1,322	1,322	-	-	685	422
Northwestern Connecticut CC	1,630	1,757	1,757	-	-	997	1,278
Norwalk CC	2,869	2,656	1,277	-	1,379	1,126	274
Norwalk State Tech. College	1,650	1,176	1,176	-	-	462	621
Ourinebaug Valley CC	381	485	448	-	37	157	176
South Central CC	1,643	1,397	1,397	-	-	798	560
Thames Valley State Tech. College	955	1,125	685	-	440	351	404
Tunxis CC	1,821	2,354	2,348	-	6	1,141	503
U. of Connecticut, Hartford	1,054	976	376	-	-	412	442
U. of Connecticut, Groton	450	436	436	-	-	210	183
U. of Connecticut, Stamford	553	559	559	-	-	206	244
U. of Connecticut, Torrington	220	218	218	-	-	104	107
U. of Connecticut, Waterbury	655	653	653	-	-	319	351
Waterbury State Tech. College	1,184	1,228	1,228	-	-	351	516
<u>Professional and Specialized Insts.</u>							
U. S. Coast Guard Academy	1,083	1,088	1,088	-	-	347	345

Degree Credit  
First-time  
Students

Fall 1972  
Fall 1973

Non-  
Degree

Degree Credit  
Under-graduate  
Graduate

Total

Total Enrollment  
Fall 1972

Total Enrollment  
Fall 1973

Institution

Connecticut - Private

University

Yale University (Res. I) 9,012 9,444 4,943 1,352 3,149 - 1,341 1,302

Four Year Colleges

Albertus Magnus College (L.A. I) 471 473 - - - 84 75  
 Anhurst College (L.A. II) 327 289 - - - 41 91  
 Connecticut College (L.A. I) 2,044 2,002 1,919 - 83 441 443  
 Fairfield University (Comp. I) 3,993 4,500 2,798 - 1,702 703 740  
 Quinnipiac College (Comp. I) 2,927 2,956 2,903 - 53 854 698  
 Sacred Heart University (Comp. I) 2,175 2,219 2,219 - - 590 657  
 St. Joseph College (L.A. II) 902 941 626 - 315 159 159  
 Trinity College (L.A. I) 2,075 2,103 1,757 - 346 485 420  
 U. of Bridgeport (Comp. I) 7,950 8,180 5,669 - 2,511 1,509 1,547  
 U. of Hartford (Comp. I) 8,920 8,548 6,372 - 2,176 1,361 1,404  
 U. of New Haven (Comp. I) 5,466 5,481 4,635 - 846 924 808  
 Wesleyan University (L.A. I) 1,834 2,150 1,955 - 195 442 564

Two Year Colleges

Hartford College for Women 222 214 214 - - 92 86  
 Mitchell College 961 886 886 - - 385 392  
 Post Junior College 633 719 719 - - 375 393

Professional and Specialized Insts.

Bridgeport Engineering Institute 345 359 359 - 7 18 19  
 Hartford Seminary Foundation 139 69 27 - - 11 -  
 Holy Apostles Seminary College 81 69 69 - - 11 11  
 Mount Sacred Heart College 22 18 18 - - 4 6  
 New England Institute 4 2 - - - - -  
 Rensselaer Polytechnic Institute 467 563 12 - - 37 18  
 St. Alphonsus College 79 69 69 - - 1 -  
 St. Basil's College 17 16 16 - - 5 3  
 St. Thomas College 75 29 29 - - 43 14

Institution	Total Enrollment Fall 1972	Total Enrollment Fall 1973	Degree Credit		Graduate	Non-Degree	Degree Credit First-time Students	
			Undergraduate	Prof			Fall 1972	Fall 1973
<u>Maine - Public</u>								
<u>University</u>								
U. of Maine, Orono (Doct. Grntg.)	9,668	10,042	8,460	-	980	602	3,010	1,873
<u>Four Year Colleges</u>								
U. of Maine, Farmington (Comp. II)	1,709	1,947	1,840	-	37	70	497	414
U. of Maine, Fort Kent (L.A. II)	619	569	472	-	-	97	91	113
U. of Maine, Machias (L.A. II)	582	698	651	-	47	-	151	140
U. of Maine, Portland-Gorham (Comp. I)	7,072	7,873	6,339	202	874	458	655	631
U. of Maine, Presque Isle (Comp. II)	1,315	1,354	1,354	-	-	-	280	291
<u>Two Year Colleges</u>								
Eastern Maine Voc-Tech. Institute	503	535	355	-	-	180	-	217
Northern Maine Voc-Tech. Institute	405	406	-	-	-	406	-	-
Southern Maine Voc-Tech. Institute	680	837	340	-	-	497	-	216
U. of Maine, Augusta	3,086	2,544	2,544	-	-	-	790	433
U. of Maine, Bangor	371	414	414	-	-	-	219	233
<u>Professional and Specialized Insts.</u>								
Maine Maritime Academy	467	484	484	-	-	-	115	143
<u>Maine - Private</u>								
<u>University - 0</u>								
<u>Four Year Colleges</u>								
Bates College (L.A. I)	1,230	1,224	1,224	-	-	-	629	362
Bowdoin College (L.A. I)	1,163	1,251	1,251	-	-	-	355	377
Colby College (L.A. I)	1,654	1,605	1,605	-	-	-	508	392
College of the Atlantic (L.A. II)	-	55	55	-	-	-	-	34
Nasson College (L.A. II)	830	819	815	-	-	4	277	225
Ricker College (L.A. II)	501	414	414	-	-	-	198	142
St. Francis College (L.A. II)	707	486	486	-	-	-	172	147
St. Joseph's College (L.A. II)	393	507	411	-	-	96	93	62
Unity College (L.A. II)	280	259	256	-	-	3	110	130
Westbrook College (L.A. II)	532	535	535	-	-	-	273	264
<u>Two Year Colleges</u>								
Beal College	244	282	218	-	-	64	102	84

Degree Credit  
First-time  
Students

Fall 1972  
Fall 1973

Non-Degree

Graduate

Prof

Undergraduate

Total

Total Enrollment  
Fall 1973

Total Enrollment  
Fall 1972

Institution

Maine - Private

Professional and Specialized Insts.

Bangor Theological Seminary  
Husson College  
Thomas College

Massachusetts - Public

University

U. of Massachusetts, Amherst(Res. II)

Four Year Colleges

Boston SC (Comp. II)  
Bridgewater SC (Comp. II)  
Fitchburg SC (Comp. I)  
Framingham SC (Comp. I)  
Lowell SC (Comp. I)  
North Adams SC (Comp. I)  
Salem SC (Comp. I)  
Southeastern Mass. U. (Comp. I)  
U. of Massachusetts, Boston (L.A. II)  
Westfield SC (Comp. II)  
Worcester SC (Comp. II)

Two Year Colleges

Berkshire CC  
Bristol CC  
Bunker Hill CC  
Cape Cod CC  
Greenfield CC  
Holyoke CC  
Massachusetts Bay CC  
Massasoit CC  
Middlesex CC  
Mt. Wachusett CC  
Newton Junior College  
Northern Essex CC  
North Shore CC  
Quincy Junior College  
Quinsigamond CC  
Roxbury CC  
Springfield Tech. CC

Institution	Total Enrollment Fall 1972	Total Enrollment Fall 1973	Degree Credit			Non-Degree	First-time Students	
			Total	Undergraduate	Prof		Graduate	Fall 1972
Bangor Theological Seminary	123	130	130	40	90	-	12	4
Husson College	1,067	757	656	656	-	101	350	166
Thomas College	486	498	498	498	-	-	178	183
U. of Massachusetts, Amherst(Res. II)	24,197	24,233	23,581	18,319	104	652	4,015	4,169
Boston SC (Comp. II)	8,880	10,210	10,210	6,794	-	-	1,503	1,980
Bridgewater SC (Comp. II)	7,116	7,286	7,286	5,028	-	-	1,108	1,685
Fitchburg SC (Comp. I)	4,730	5,911	5,911	4,631	-	-	915	782
Framingham SC (Comp. I)	4,475	4,901	4,901	3,903	-	-	590	954
Lowell SC (Comp. I)	2,725	3,059	3,059	2,116	-	-	663	551
North Adams SC (Comp. I)	2,511	2,741	2,741	2,309	-	-	538	546
Salem SC (Comp. I)	7,119	7,197	7,197	6,723	-	-	1,155	1,194
Southeastern Mass. U. (Comp. I)	4,937	4,812	4,812	4,766	-	-	650	1,261
U. of Massachusetts, Boston (L.A. II)	5,662	6,267	6,267	6,230	-	-	1,383	1,344
Westfield SC (Comp. II)	4,937	3,911	3,899	2,873	-	12	950	665
Worcester SC (Comp. II)	3,874	4,233	3,984	3,033	-	249	54	765
Berkshire CC	2,165	2,180	1,300	1,300	-	880	410	365
Bristol CC	2,981	3,001	1,206	1,206	-	1,795	872	704
Bunker Hill CC	-	1,010	541	541	-	469	-	477
Cape Cod CC	2,381	2,793	2,215	2,215	-	578	929	468
Greenfield CC	3,177	2,276	941	941	-	819	227	181
Holyoke CC	3,283	3,210	1,429	1,429	-	1,020	757	447
Massachusetts Bay CC	3,225	3,621	3,621	1,256	-	-	346	422
Massasoit CC	2,162	1,064	1,040	3,621	-	-	1,035	970
Middlesex CC	2,029	2,300	1,486	1,486	-	814	577	626
Mt. Wachusett CC	581	443	443	443	-	-	262	234
Newton Junior College	3,942	3,995	3,995	3,995	-	-	1,579	2,390
Northern Essex CC	6,368	4,828	3,691	3,691	-	1,137	438	497
North Shore CC	1,743	2,489	2,489	2,489	-	-	878	448
Quincy Junior College	3,962	4,213	2,467	2,467	-	-	682	1,036
Quinsigamond CC	-	375	375	375	-	-	-	375
Roxbury CC	4,755	5,665	1,232	1,232	-	4,433	1,274	466

Degree Credit  
First-time  
Students

Non-  
Degree

Degree Credit  
First  
Prof

Under-  
graduate

Total

Total  
Enrollment  
Fall 1972

Total  
Enrollment  
Fall 1973

Total  
Enrollment  
Fall 1972

Total  
Enrollment  
Fall 1973

Total  
Enrollment  
Fall 1972

Total  
Enrollment  
Fall 1973

Total  
Enrollment  
Fall 1972

Total  
Enrollment  
Fall 1973

Institution

Massachusetts - Public

Professional and Specialized Insts.

Blue Hills Regional Tech. Inst.  
Lowell Technological Institute  
Massachusetts College of Art  
Massachusetts Maritime Academy

Massachusetts - Private

Universities

Boston College (Doct. Grntg.)  
Boston University (Res. II)  
Brandeis University (Res. II)  
Clark University (Doct. Grntg.)  
Harvard University (Res. I)  
Mass. Institute of Technology (Res. I)  
Northeastern University (Doct. Grntg.)  
Tufts University (Res. II)

Four Year Colleges

American Int'l College (Comp. I)  
Amherst College (L.A. I)  
Anna Maria College (L.A. II)  
Assumption College (L.A. II)  
Atlantic Union College (L.A. II)  
College of Our Lady of the Elms (L.A. II)  
College of the Holy Cross (L.A. I)  
Curry College (L.A. II)  
Eastern Nazarene College (L.A. II)  
Emerson College (Comp. II)  
Emmanuel College (L.A. I)  
Gordon College (L.A. II)  
Hampshire College (L.A. II)  
Hebrew College (L.A. II)  
Lesley College (L.A. II)  
Merrimack College (Comp. I)  
Mount Holyoke College (L.A. I)  
Newton College (L.A. I)  
Regis College (L.A. I)  
Simmons College (Comp. I)  
Smith College (L.A. I)  
Springfield College (Comp. II)  
Stonehill College (L.A. II)

Institution	Total Enrollment Fall 1972	Total Enrollment Fall 1973	Degree Credit First-time Students		Non-Degree	Degree Credit Undergraduate		Total Enrollment Fall 1972	Total Enrollment Fall 1973
			Prof	Graduate		Prof	Graduate		
Blue Hills Regional Tech. Inst.	308	307	-	-	102	-	-	99	182
Lowell Technological Institute	6,411	7,164	-	539	-	-	539	872	1,371
Massachusetts College of Art	1,324	1,414	-	52	-	-	52	163	249
Massachusetts Maritime Academy	416	600	-	600	-	-	600	201	279

Boston College (Doct. Grntg.)	11,787	12,381	830	2,810	-	-	2,810	2,273	1,831
Boston University (Res. II)	23,393	23,581	1,940	5,117	-	-	5,117	3,254	3,337
Brandeis University (Res. II)	3,074	3,310	-	702	-	-	702	603	695
Clark University (Doct. Grntg.)	3,194	3,170	-	338	-	-	338	534	587
Harvard University (Res. I)	19,322	20,602	2,361	6,647	-	-	6,647	1,526	1,647
Mass. Institute of Technology (Res. I)	7,834	7,878	-	3,775	-	-	3,775	1,046	895
Northeastern University (Doct. Grntg.)	34,051	34,298	336	5,162	185	-	5,162	8,271	7,462
Tufts University (Res. II)	5,619	6,200	1,321	707	-	-	707	977	1,106

American Int'l College (Comp. I)	2,713	2,426	-	508	-	-	508	671	404
Amherst College (L.A. I)	1,271	1,321	1,918	-	-	-	-	312	340
Anna Maria College (L.A. II)	603	602	1,321	-	-	-	-	121	118
Assumption College (L.A. II)	1,632	1,714	602	660	-	-	660	436	310
Atlantic Union College (L.A. II)	693	673	1,054	-	-	-	-	197	156
College of Our Lady of the Elms (L.A. II)	429	433	673	-	-	-	-	106	116
College of the Holy Cross (L.A. I)	2,607	2,609	433	-	-	-	-	663	679
Curry College (L.A. II)	1,062	962	2,601	8	-	-	8	242	219
Eastern Nazarene College (L.A. II)	901	876	962	-	41	-	-	241	219
Emerson College (Comp. II)	1,857	1,671	857	19	-	-	19	455	335
Emmanuel College (L.A. I)	1,143	1,671	1,531	140	-	-	140	201	125
Gordon College (L.A. II)	859	968	945	23	-	-	23	485	414
Hampshire College (L.A. II)	998	1,252	1,252	-	-	-	-	N/A	27
Hebrew College (L.A. II)	114	149	109	40	-	-	40	125	157
Lesley College (L.A. II)	1,081	1,331	973	358	-	-	358	502	679
Merrimack College (Comp. I)	2,049	2,517	2,517	-	65	-	-	488	523
Mount Holyoke College (L.A. I)	1,950	2,005	1,974	31	-	-	31	193	188
Newton College (L.A. I)	1,002	832	832	-	-	-	-	202	185
Regis College (L.A. I)	844	810	810	-	-	-	-	442	425
Simmons College (Comp. I)	2,754	2,804	1,905	895	-	-	895	622	713
Smith College (L.A. I)	2,537	2,567	2,407	160	-	-	160	122	547
Springfield College (Comp. II)	2,464	2,765	2,204	561	-	-	561	432	484
Stonehill College (L.A. II)	2,201	2,142	2,106	-	36	-	-	-	-

Institution	Total Enrollment Fall 1972	Total Enrollment Fall 1973	Degree Credit		Non-Degree	Degree Credit First-time Students	
			Undergraduate	First Prof		Fall 1972	Fall 1973
<b>Massachusetts - Private</b>							
<b>Four Year Colleges (Cont'd)</b>							
Suffolk University (Comp. I)	5,958	6,063	3,029	2,122	-	382	401
Wellesley College (L.A. I)	1,908	1,963	1,951	-	-	533	500
Western N. E. College (Comp. I)	3,286	3,387	2,226	570	15	442	456
Wheaton College (L.A. I)	1,166	1,211	1,211	-	-	348	340
Wheelock College (L.A. I)	928	906	746	-	-	153	148
Williams College (L.A. I)	1,719	1,832	1,792	-	-	482	473
<b>Two Year Colleges</b>							
Aquinas Junior College, Newton	187	165	165	-	-	-	99
Aquinas Junior College, Milton	220	257	252	-	5	-	133
Bay Path Junior College	424	491	117	-	374	101	64
Becker Junior College	456	606	606	-	-	N/A	355
Bradford College	326	312	312	-	-	170	178
Cambridge Junior College	97	65	65	-	-	52	35
Chamberlayne Junior College	641	607	607	-	-	406	362
Dean Junior College	1,003	1,034	964	-	70	475	538
Endicott Junior College	690	728	728	-	-	439	422
Fisher Junior College	308	353	353	-	-	205	219
Franklin Institute of Boston	961	953	260	-	-	176	123
Garland Junior College	266	297	282	-	693	144	166
Graham Junior College	1,059	957	957	-	15	608	495
Laboure Junior College	259	327	327	-	-	186	122
Lasell Junior College	767	721	721	-	-	436	412
Leicester Junior College	266	230	228	-	2	N/A	123
Mount Ida Junior College	656	675	369	-	306	307	206
Newbury Junior College	246	1,254	1,192	-	62	117	188
Pine Manor Junior College	505	491	491	-	-	283	260
Simon's Rock	221	207	207	-	-	N/A	100
Worcester Junior College	1,534	1,222	1,232	-	-	663	485
<b>Professional and Specialized Insts.</b>							
Andover Newton Theological School	462	469	36	213	-	-	-
Arthur D. Little Mgmt. Ed. Institute	27	12	-	-	-	-	-
Babson College	1,868	2,178	1,068	-	-	246	263
Bentley College	3,368	3,512	3,512	-	-	660	668
Berklee College of Music	1,660	1,955	981	-	974	300	321
Berkshire Christian College	150	125	126	-	3	36	35
Boston Conservatory of Music	543	579	536	-	-	141	171
Central N. E. College of Technology	194	207	207	-	-	95	-
Episcopal Theological School	107	117	117	-	-	-	-
Gordon-Conwell Theological Seminary	466	477	27	358	-	-	-



Institution	Total Enrollment		Total	Degree Credit		Non-Degree	Degree Credit First-time Students	
	Fall 1972	Fall 1973		Under-graduate	First Prof		Graduate	Fall 1972
<b>Massachusetts - Private</b>								
<b>Professional and Specialized Insts. (Cont'd)</b>								
Hampden College of Pharmacy	85	80	80	80	-	-	38	18
Hebrew College	155	165	165	145	-	-	67	89
Mass. College of Optometry	257	282	282	-	282	-	-	-
Mass. College of Pharmacy	690	970	970	931	-	-	N/A	245
Mount Alvernia College	15	Closed	-	-	-	-	-	-
New England Conservatory of Music	545	673	652	471	-	-	112	130
New England Institute of Anatomy, Sanitary Science and Embalming	170	178	48	48	-	-	17	21
New England School of Law	674	810	810	-	810	-	-	-
Nichols College	708	665	665	665	-	-	203	167
Oblate College and Seminary	17	Closed	-	-	-	-	2	-
Pope John XXIII National Seminary	75	63	63	63	-	-	N/A	-
St. Hyacinth College and Seminary	55	56	54	54	-	-	10	14
St. John's Seminary	301	269	269	95	171	-	N/A	25
Swain School of Design	120	130	130	130	-	-	46	40
Wentworth College of Technology	276	232	232	232	-	-	N/A	-
Wentworth Institute	1,632	1,723	1,415	1,415	-	-	585	670
Woods Hole Oceanographic Institute	62	69	69	-	-	-	-	-
Worcester Foundation	50	12	12	-	-	-	-	-
Worcester Polytechnic Institute	2,537	2,628	2,628	2,102	-	-	571	540
<b>New Hampshire - Public</b>								
<b>University</b>								
U. of New Hampshire (Doct. Grntg.)	10,921	11,252	10,788	9,252	-	-	2,006	1,782
<b>Four Year Colleges</b>								
Keene SC (Comp. I)	2,653	2,335	2,286	2,251	-	-	549	569
Plymouth SC (Comp. I)	2,641	2,711	2,711	2,590	-	-	710	704
<b>Two Year Colleges</b>								
N. H. Technical Institute	574	485	-	-	-	-	317	-
N. H. Voc-Tech. College, Berlin	238	261	-	-	-	-	N/A	-
N. H. Voc-Tech. College, Claremont	434	412	6	6	-	-	N/A	-
N. H. Voc-Tech. College, Laconia	216	182	-	-	-	-	N/A	-
N. H. Voc-Tech. College, Manchester	220	284	2	2	-	-	N/A	-
N. H. Voc-Tech. College, Nashua	262	233	3	3	-	-	116	-
N. H. Voc-Tech. College, Portsmouth	490	633	-	-	-	-	N/A	-

Institution	Total Enrollment Fall 1972	Total Enrollment Fall 1973	Degree Credit		Degree Credit First-time Students			
			Total	Undergraduate	First Prof	Graduate	Non-Degree	Fall 1972
<u>New Hampshire - Private</u>								
<u>University</u>								
Dartmouth College (Doct. Grntg.)	3,995	4,146	3,401	109	636	-	97's	1,048
<u>Four Year Colleges</u>								
Belknap College (L.A. II)	411	296	292	-	-	4	116	69
Colby College-New Hampshire (L.A. II)	623	588	491	-	-	97	318	221
Franconia College (L.A. II)	439	484	484	-	-	-	113	101
Franklin Pierce College (L.A. II)	880	883	883	-	-	-	327	428
Mount St. Mary College (L.A. II)	286	226	226	-	-	-	83	54
Nathaniel Hawthorne College (L.A. II)	762	660	608	-	-	52	296	259
New England College (L.A. II)	1,510	1,598	1,598	-	-	-	359	427
Notre Dame College (L.A. II)	412	328	328	-	-	-	100	109
Rivier College (L.A. II)	940	1,052	743	-	228	81	360	156
St. Anselm's College (L.A. II)	1,765	1,738	1,449	-	-	289	489	380
<u>Two Year Colleges</u>								
Castle Junior College	N/A	91	91	-	-	-	57	39
Concord College	165	120	115	-	-	5	70	33
Hesser College	126	194	194	-	-	-	70	97
McIntosh College	123	115	115	-	-	-	36	60
New England Aeronautical Institute	385	398	398	-	-	-	230	226
White Pines College	60	76	76	-	-	-	35	29
<u>Professional and Specialized Insts.</u>								
Antioch Graduate School	141	150	-	-	150	-	-	-
New Hampshire College	1,246	1,547	1,341	-	-	206	249	218
St. Anthony Seminary College	40	Closed	-	-	-	-	N/A	-
<u>Rhode Island - Public</u>								
<u>University</u>								
U. of Rhode Island (Doct. Grntg.)	15,947	16,116	13,282	-	2,834	-	3,014	2,069
<u>Four Year College</u>								
Rhode Island College (Comp. I)	8,204	8,362	7,355	-	1,007	-	1,001	866
<u>Two Year College</u>								
Rhode Island Junior College, Providence	1,036	1,163	652	-	-	511	622	192
Rhode Island Junior College, Warwick	3,162	4,348	3,061	-	-	1,287	558	835

Institution	Total Enrollment Fall 1972	Total Enrollment Fall 1973	Degree Credit		Degree Credit First-time Students		Non-Degree
			Total	Undergraduate	Undergraduate	Graduate	
<u>Rhode Island - Private</u>							
<u>University</u>							
Brown University (Res. II)	6,292	6,524	5,169	139	1,226	1,305	1,295
<u>Four Year Colleges</u>							
Barrington College (L.A. II)	657	575	575	-	-	208	123
Mount St. Joseph College (L.A. II)	188	140	140	-	-	43	30
Providence College (Comp. I)	4,157	4,620	4,015	-	604	791	866
Roger Williams College, Bristol (L.A. II)	1,847	1,563	1,563	-	-	432	479
Roger Williams College, Providence (Comp. I)	1,184	897	897	-	-	131	306
Salve Regina College (L.A. II)	945	1,065	1,065	-	-	87	85
<u>Two Year Colleges - 0</u>							
<u>Professional and Specialized Insts.</u>							
Bryant College	4,206	4,299	3,509	-	350	524	958
Johnson & Wales College	1,320	4,080	4,049	-	-	31	3,048
Rhode Island School of Design	1,270	1,302	1,198	-	104	223	229
Seminary of Our Lady of Providence	70	65	65	-	-	15	22
<u>Vermont - Public</u>							
<u>University</u>							
U. of Vermont (Doct. Grntg.)	9,825	10,551	9,120	301	836	294	1,898 2,128
<u>Four Year Colleges</u>							
Castleton SC (Comp. II)	1,618	1,631	1,304	-	176	151	243
Johnson SC (L.A. II)	1,187	1,192	1,124	-	7	61	342
Lyndon SC (L.A. II)	714	755	705	-	50	197	198
<u>Two Year Colleges</u>							
Community College of Vermont	1,200	1,500	1,500	-	-	960	1,000
Vermont Technical College	475	528	445	-	-	275	207
<u>Vermont - Private</u>							
<u>University - 0</u>							

Institution	Total Enrollment		Degree Credit		Non-Degree		Degree Credit First-time	
	Fall 1972	Fall 1973	Undergraduate	Prof	Graduate	Non-Degree	Fall 1972	Fall 1973
<u>Vermont - Private</u>								
<u>Four Year Colleges</u>								
Bennington College (L.A. I)	600	504	600	-	4	-	169	182
College of St. Joseph the Provider (L.A. II)	336	314	314	-	-	-	128	143
Goddard College (L.A. I)	1,922	1,891	1,395	-	496	-	165	167
Marlboro College (L.A. I)	225	215	212	-	-	3	52	52
Middlebury College (L.A. I)	1,841	1,941	1,936	-	5	-	524	545
Norwich University (L.A. II)	1,227	1,110	1,102	-	8	-	546	317
Royalton College (L.A. II)	123	58	58	-	-	-	23	30
St. Michael's College (Comp. II)	1,561	1,668	1,543	-	125	-	568	496
School for International Training (L.A. II)	306	349	103	-	119	127	-	-
Trinity College (L.A. II)	497	502	502	-	-	-	130	123
Vermont College (L.A. II)	436	409	409	-	-	-	72	196
Windham College (L.A. II)	889	899	899	-	-	-	287	236
<u>Two Year Colleges</u>								
Champlain College	898	820	575	-	-	245	236	217
Concord College	49	50	50	-	-	-	N/A	N/A
Green Mountain College	642	579	579	-	-	-	387	325
St. Joseph College	307	222	222	-	-	-	N/A	129

## NOTES



**NEW ENGLAND BOARD OF HIGHER EDUCATION**  
40 Grove Street  
Wellesley, Massachusetts 02158